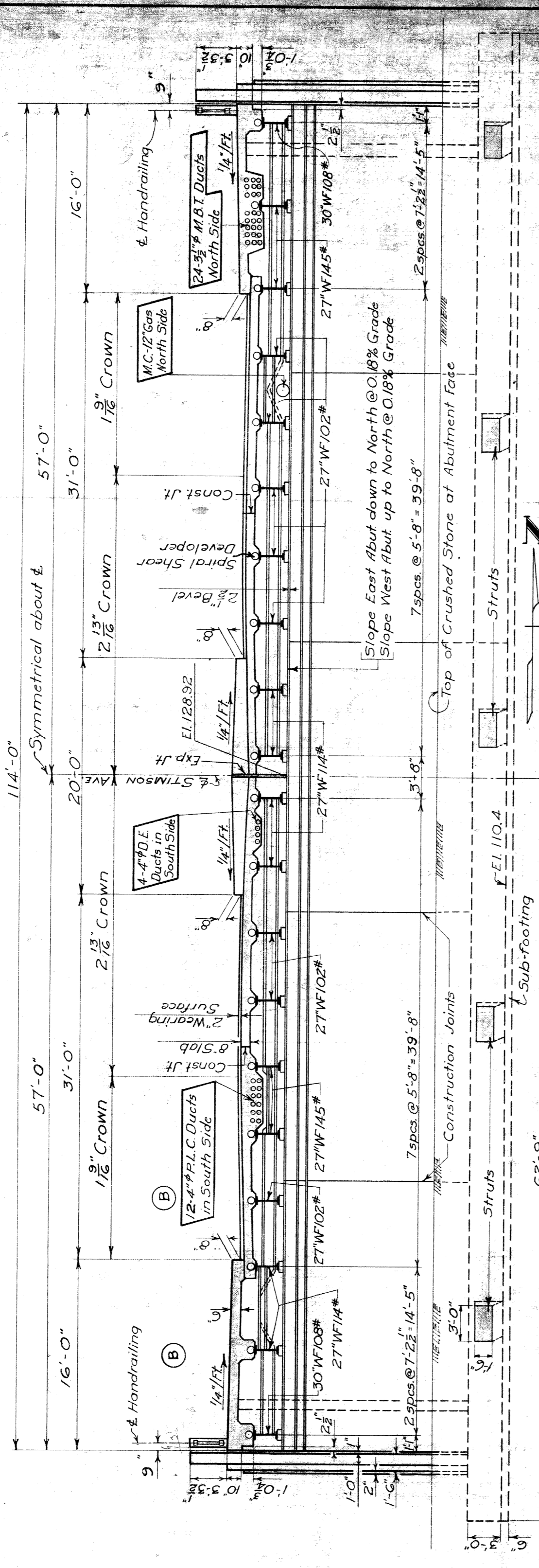
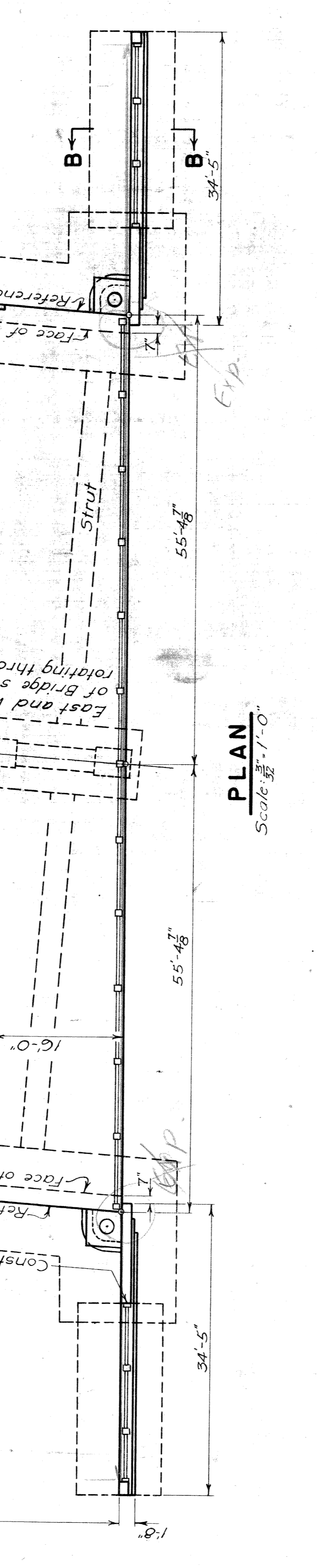


NO.	DATE	BY	REVISION
1	8-7-46	K.F.D.	As Shown
2	8-7-46	K.F.D.	Added Sand-Growl
3	8-7-46	K.F.D.	Revised Deck Elevation
4	8-7-46	K.F.D.	Revised Deck Elevation
5	8-7-46	K.F.D.	Revised Deck Elevation
6	8-7-46	K.F.D.	Revised Deck Elevation
7	8-7-46	K.F.D.	Revised Deck Elevation
8	8-7-46	K.F.D.	Revised Deck Elevation
9	8-7-46	K.F.D.	Revised Deck Elevation
10	8-7-46	K.F.D.	Revised Deck Elevation

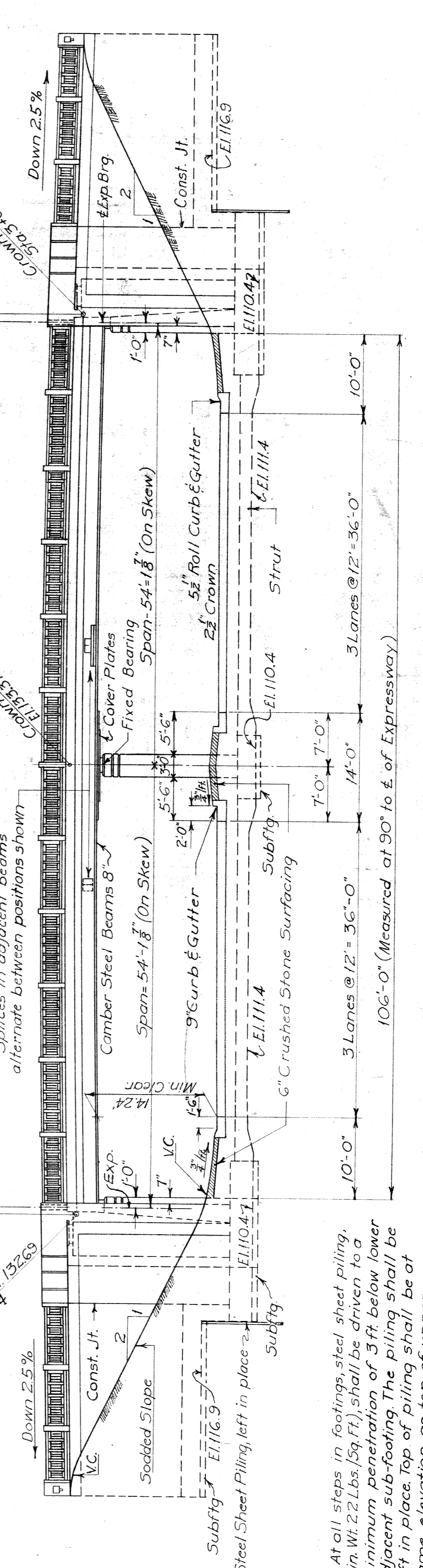
MAXIMUM FOUNDATION PRESSURES (In Lbs. per Sq. Ft.)		
Load	At Toe	Average At Edge
DL	3200	2400
DL+LL	3400	2550
DL+Surch	3600	2500



**DECK SECTION AND ABUTMENT ELEVATION (AT 90° TO E. STIMSON)**  
Scale: 1/4" = 1'-0"

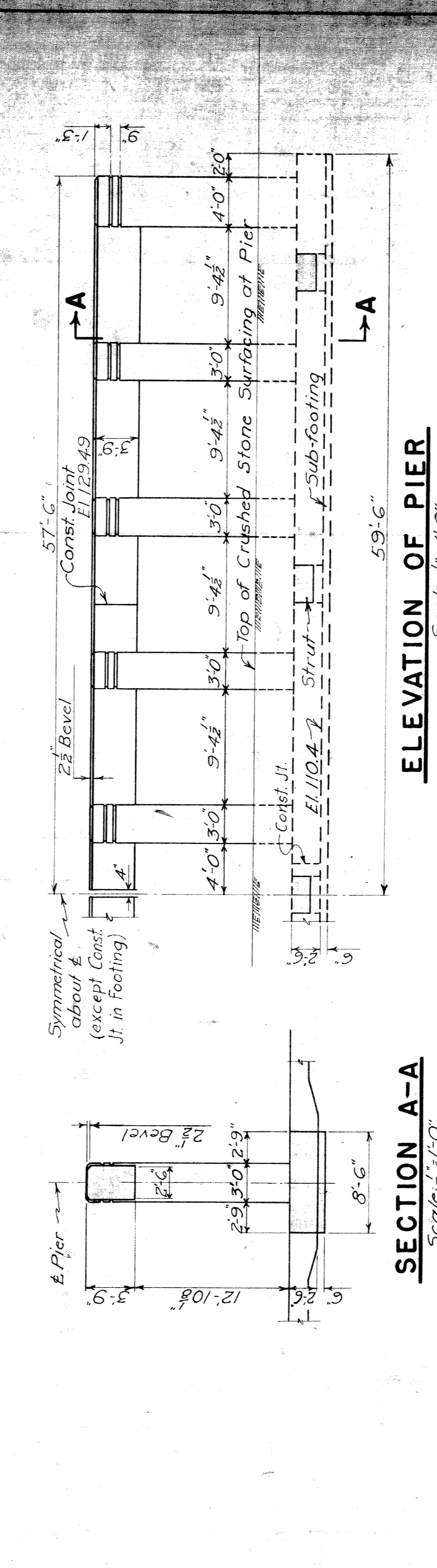


**PLAN**  
Scale: 1/4" = 1'-0"

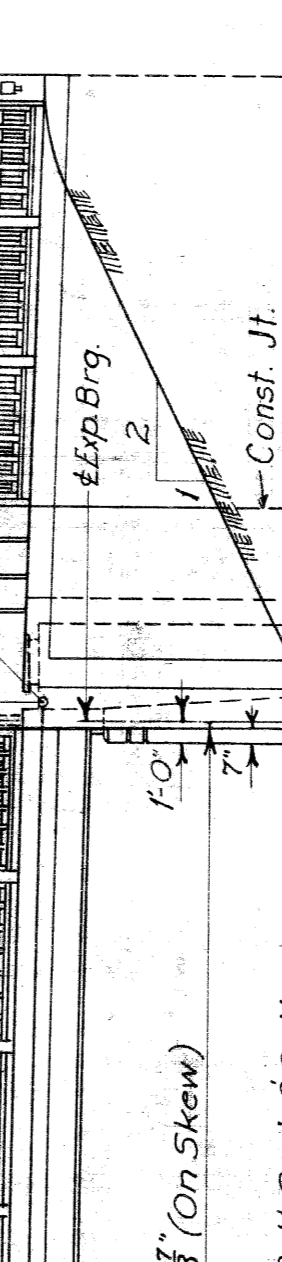


**NORTH ELEVATION**  
Scale: 3/8" = 1'-0"

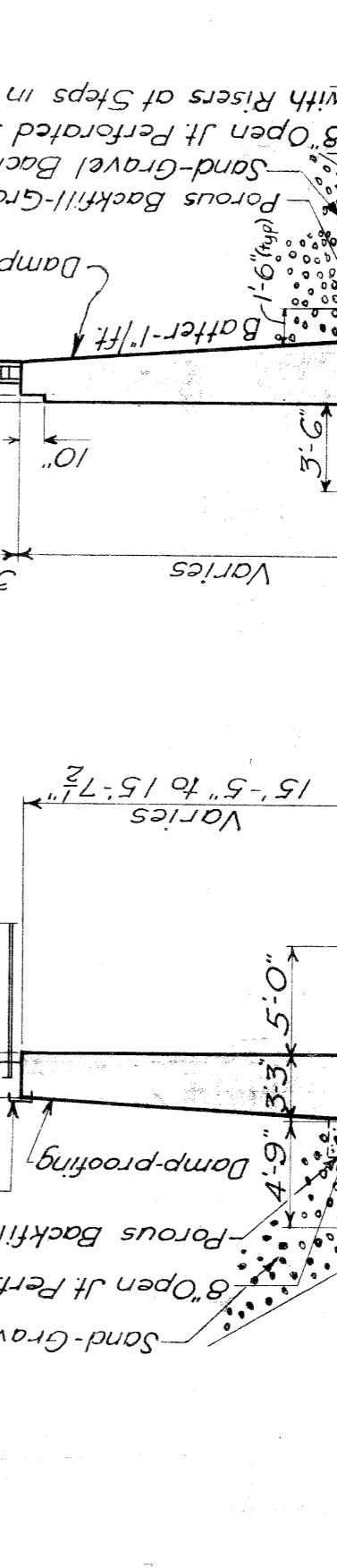
All expressway paving, curbing, surfacing and sodding shown on this elevation will be done by others.



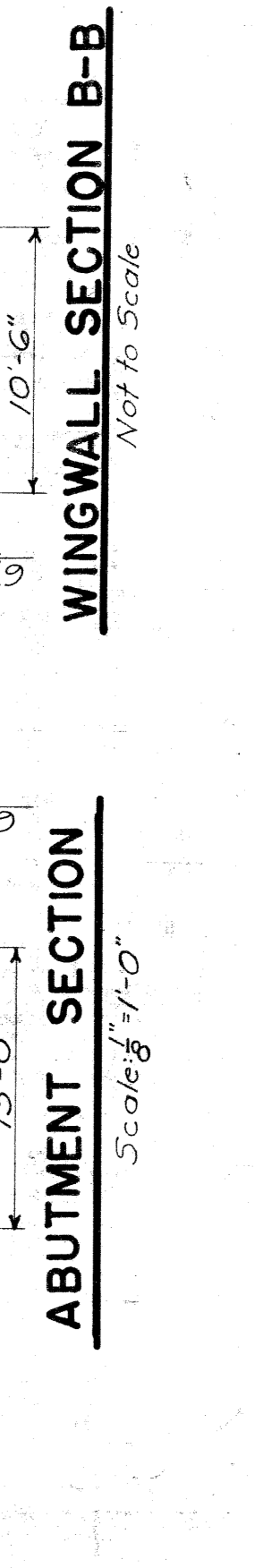
**ELEVATION OF PIER**  
Scale: 1/4" = 1'-0"



**SECTION A-A**  
Scale: 3/8" = 1'-0"



**WINGWALL SECTION B-B**  
Not to Scale

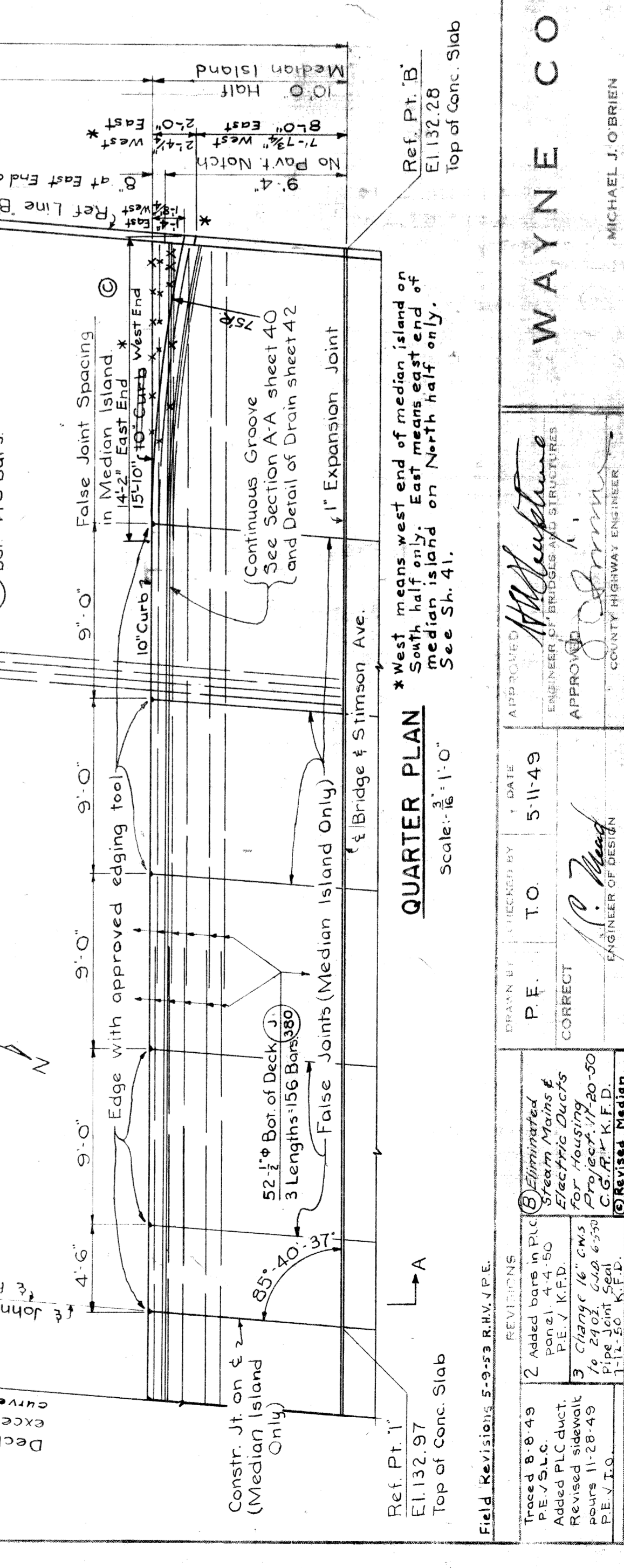
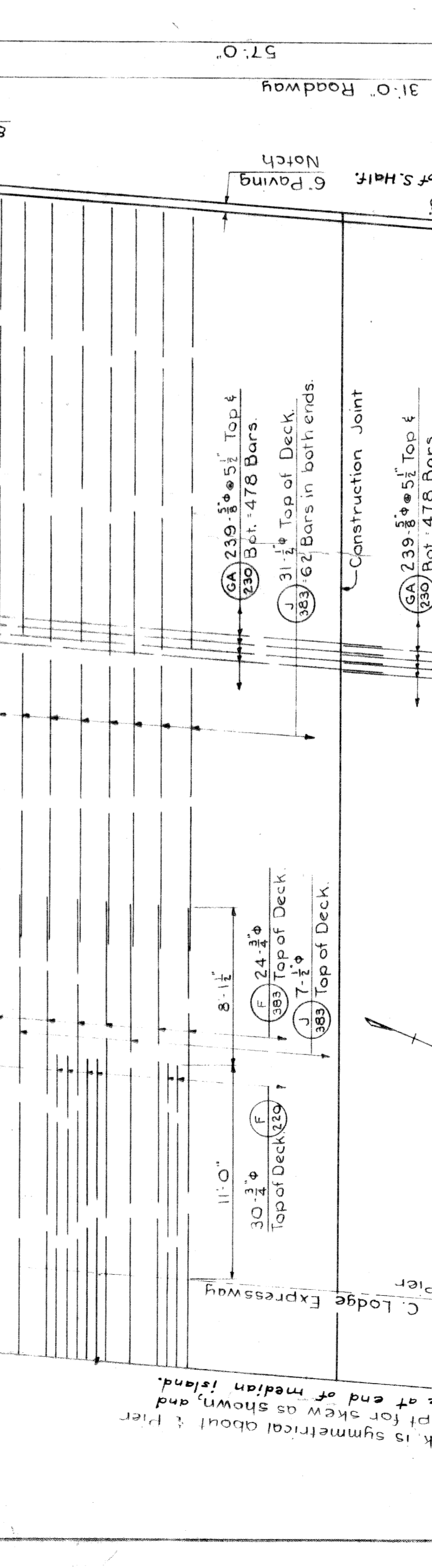
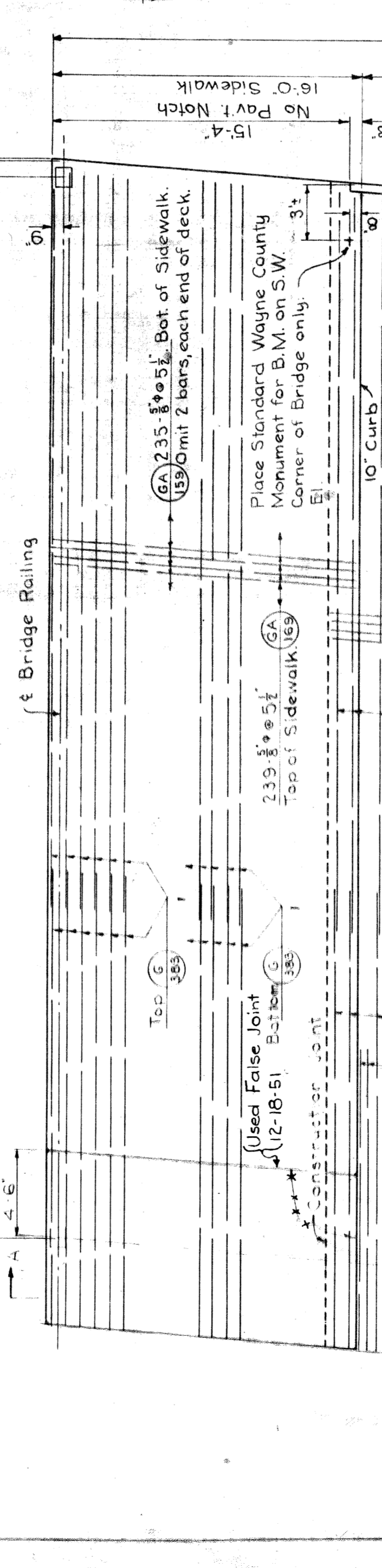
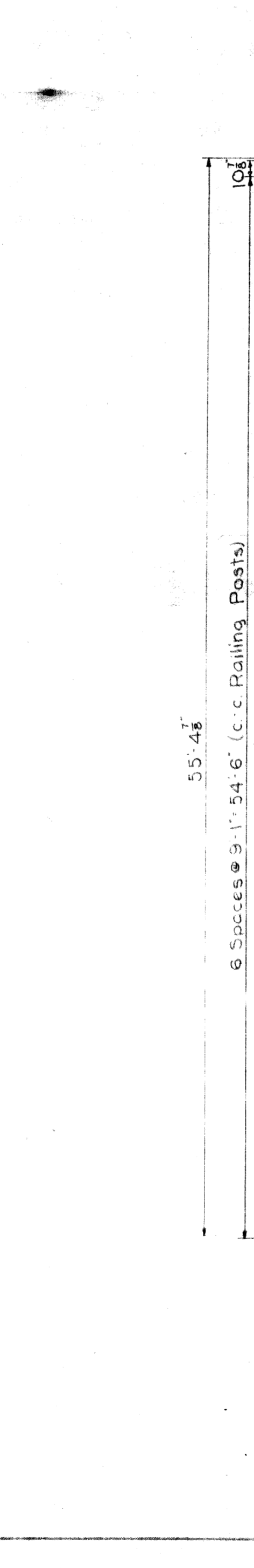
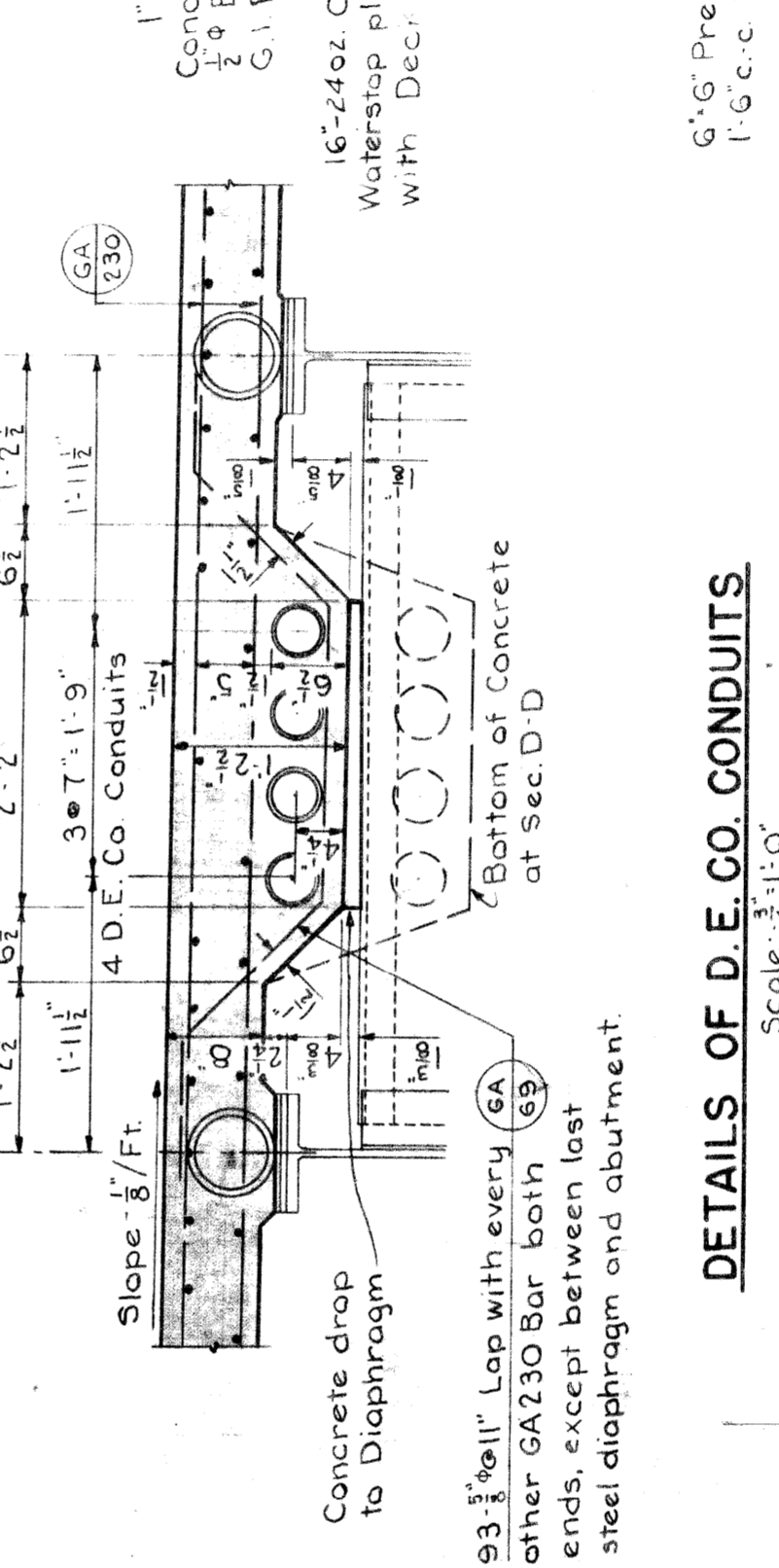
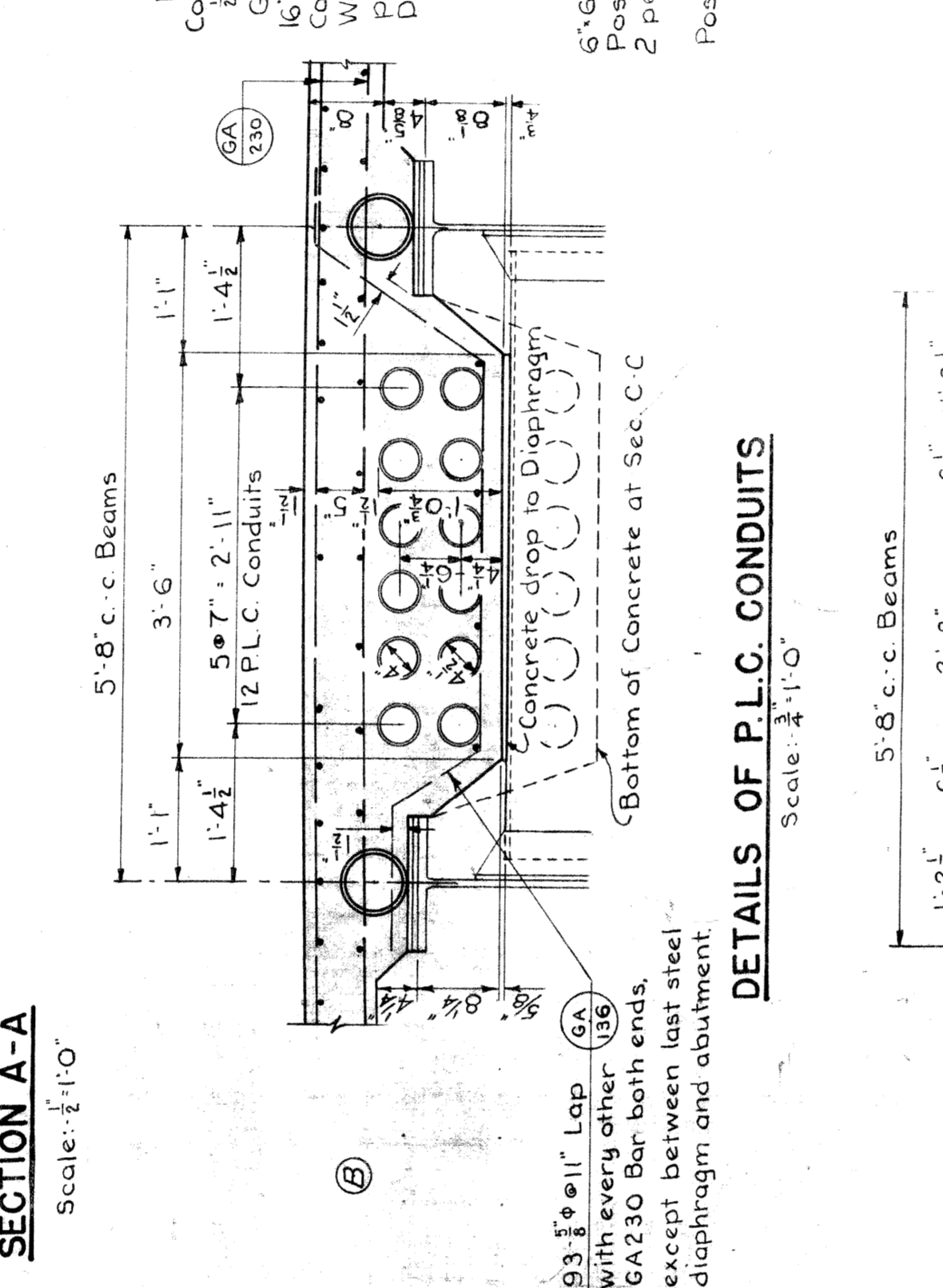
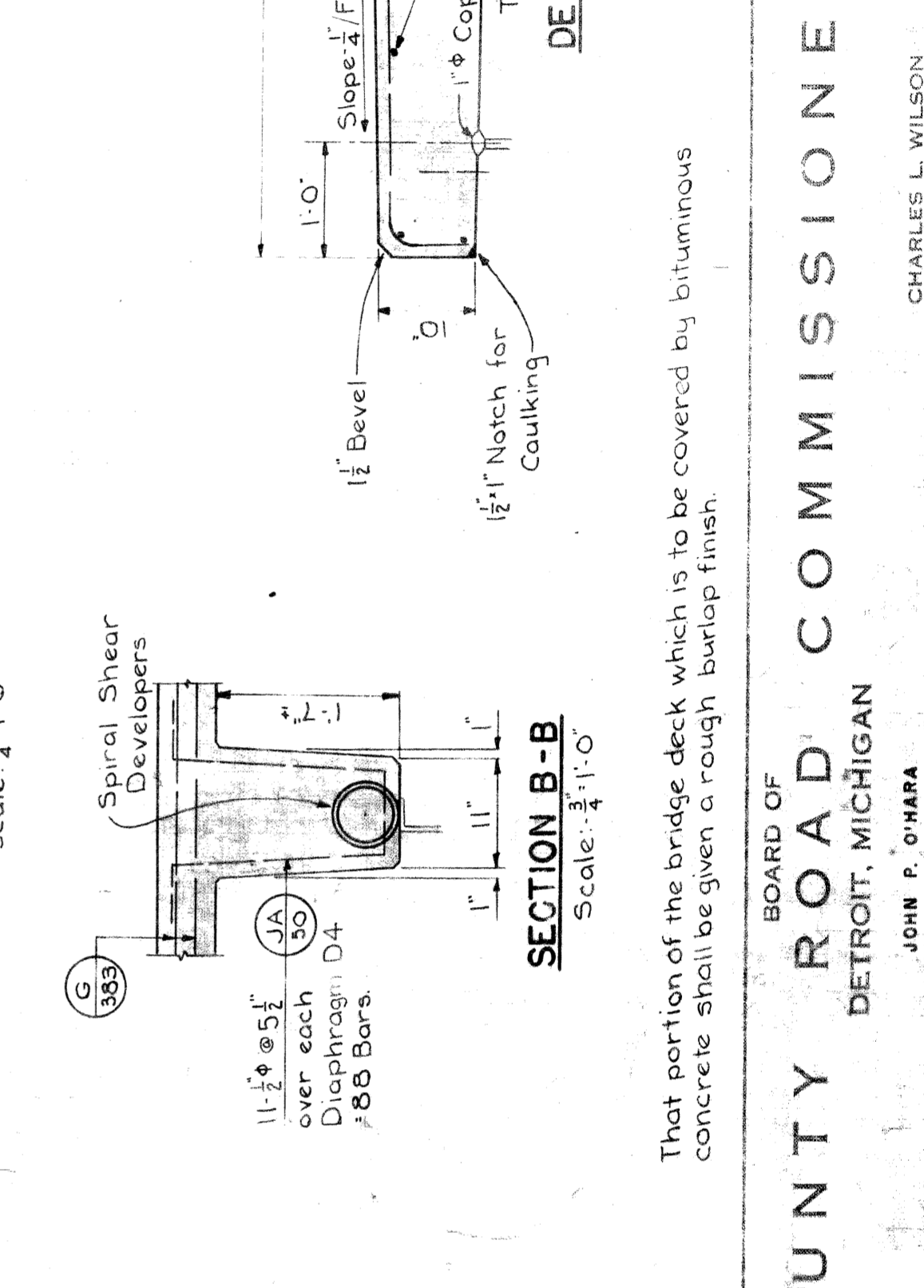
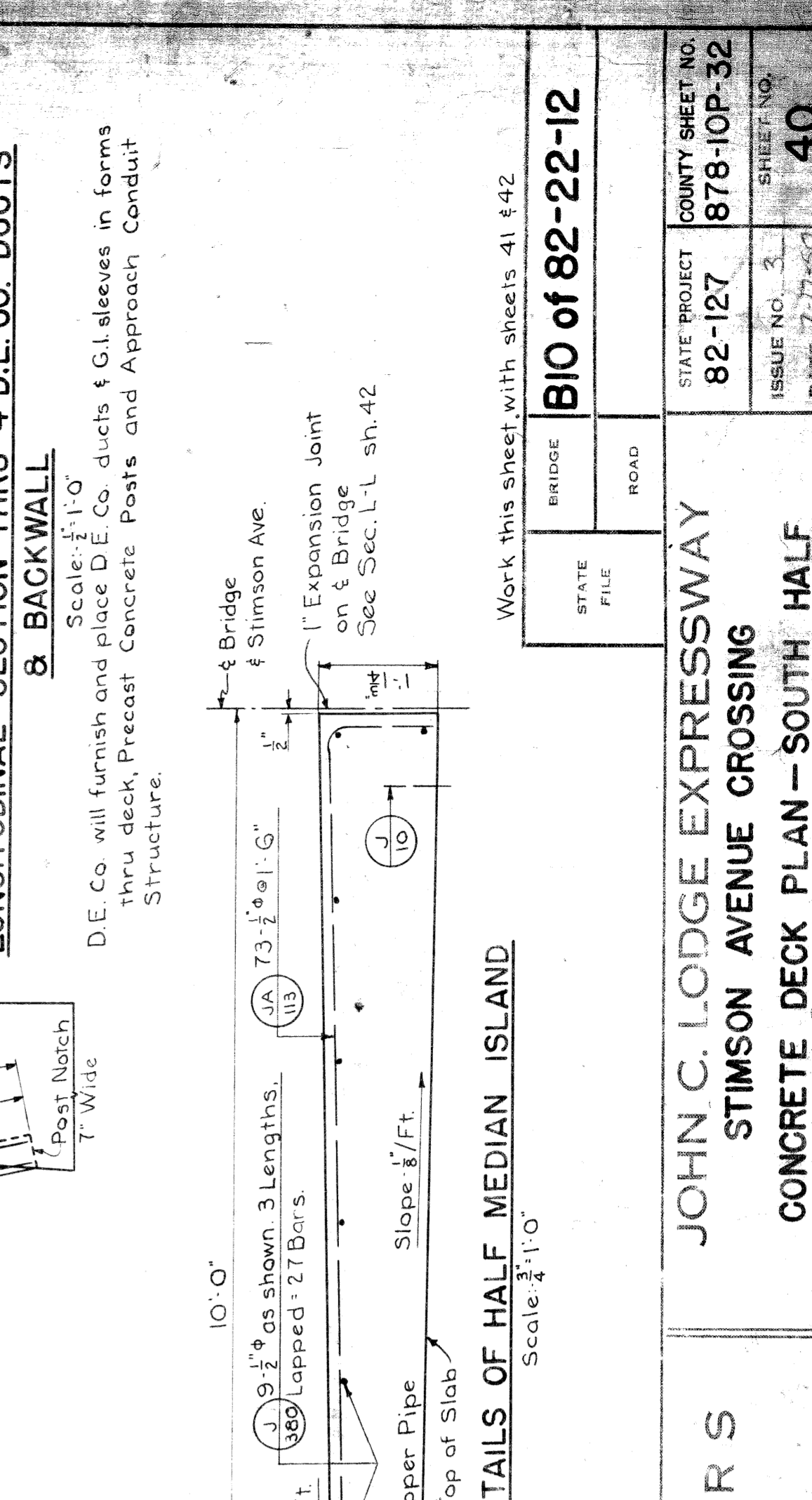
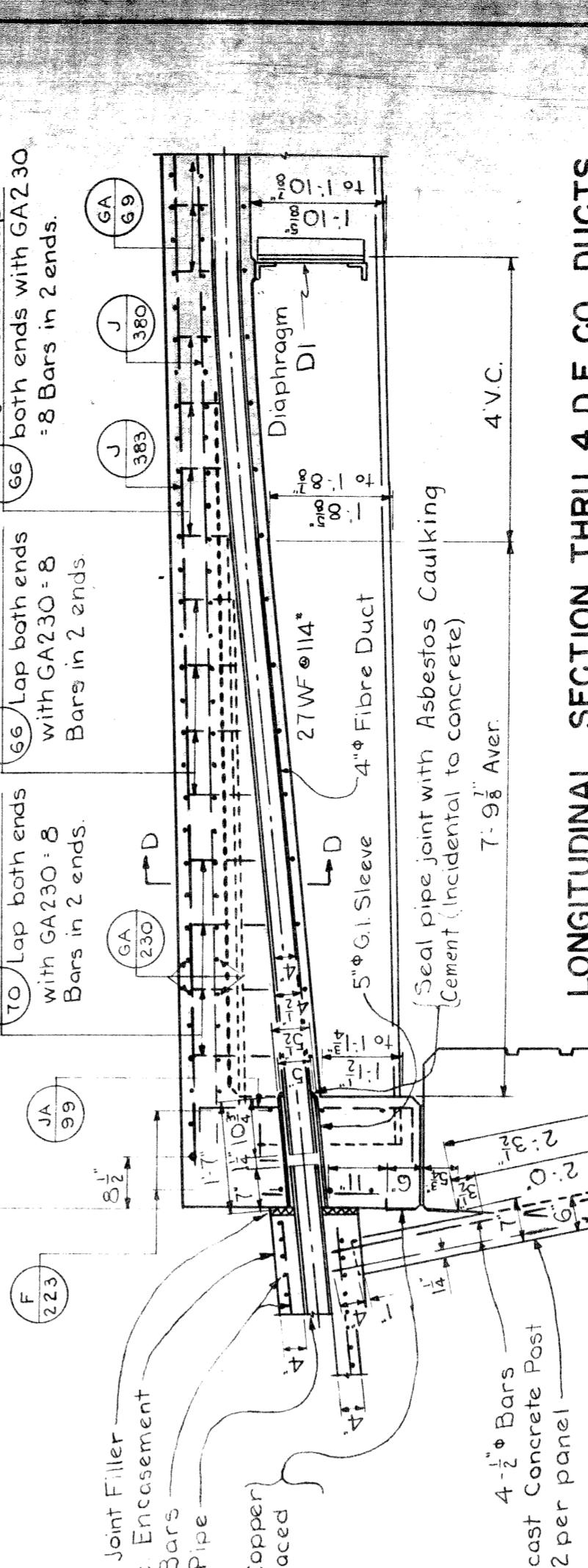
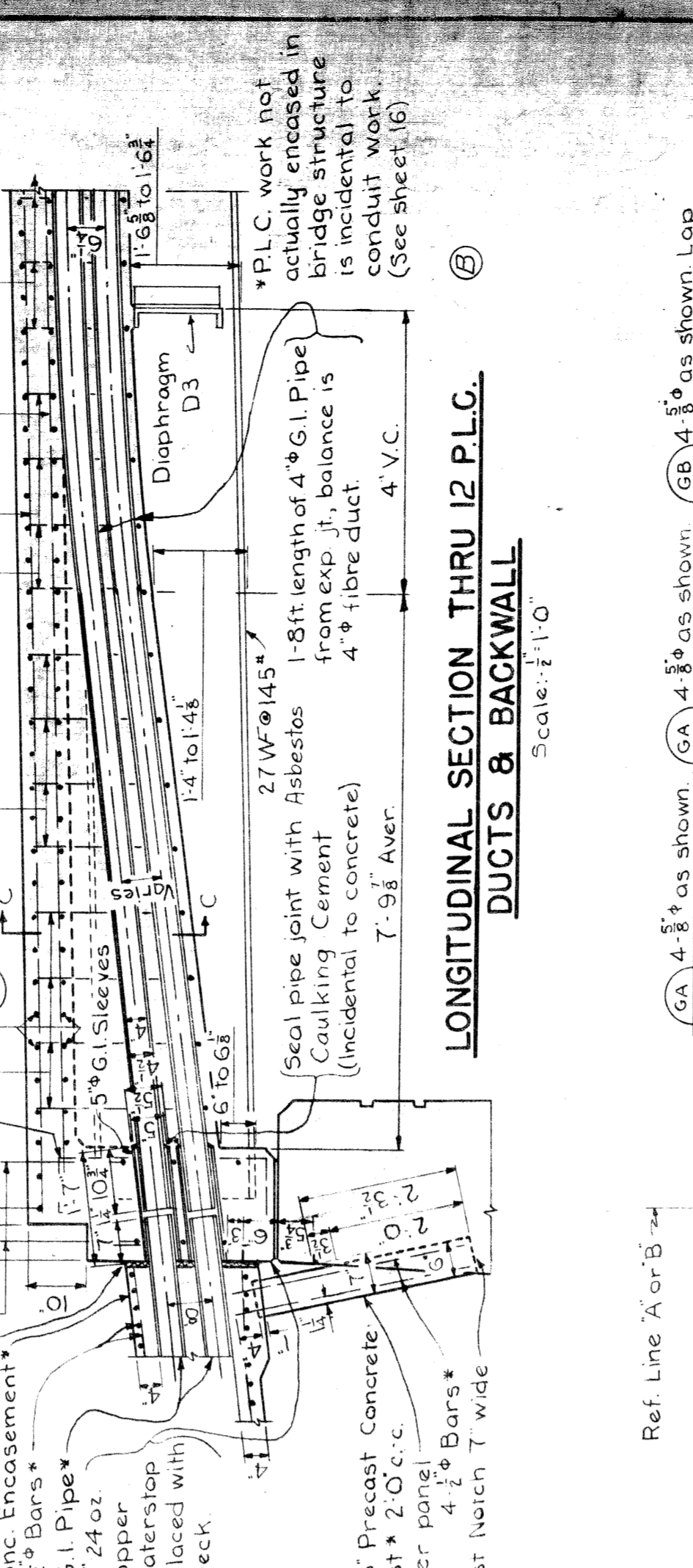
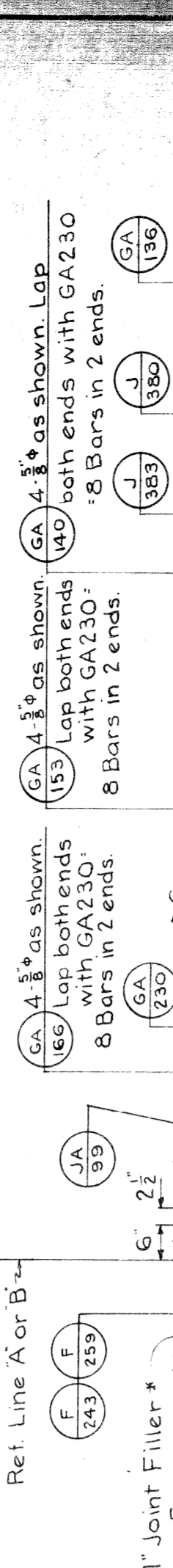
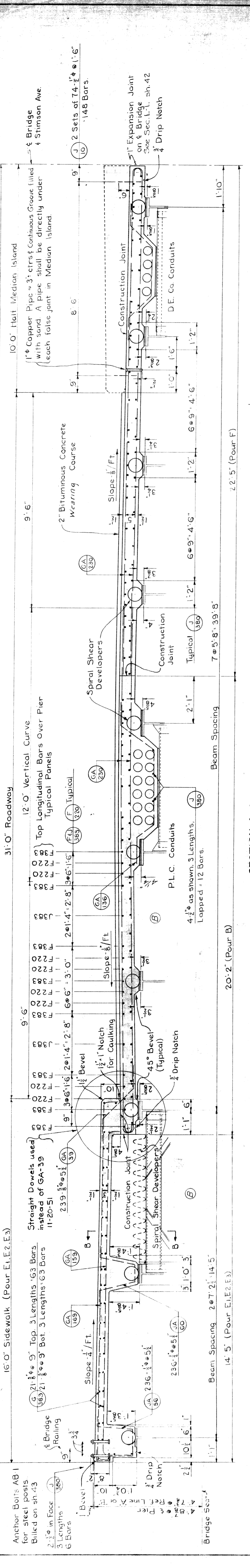


**ABUTMENT SECTION**  
Scale: 1/4" = 1'-0"

Design Specifications -  
M.S.H.D.s Specifications for the Design of Highway Bridges  
1936 Edition Deflection from Live Load and Impact -  
not more than 1/800" of the Span Length.  
Loading -  
H 20-S16-44  
Concrete -  
Grade #1 with Air-Entraining Cement

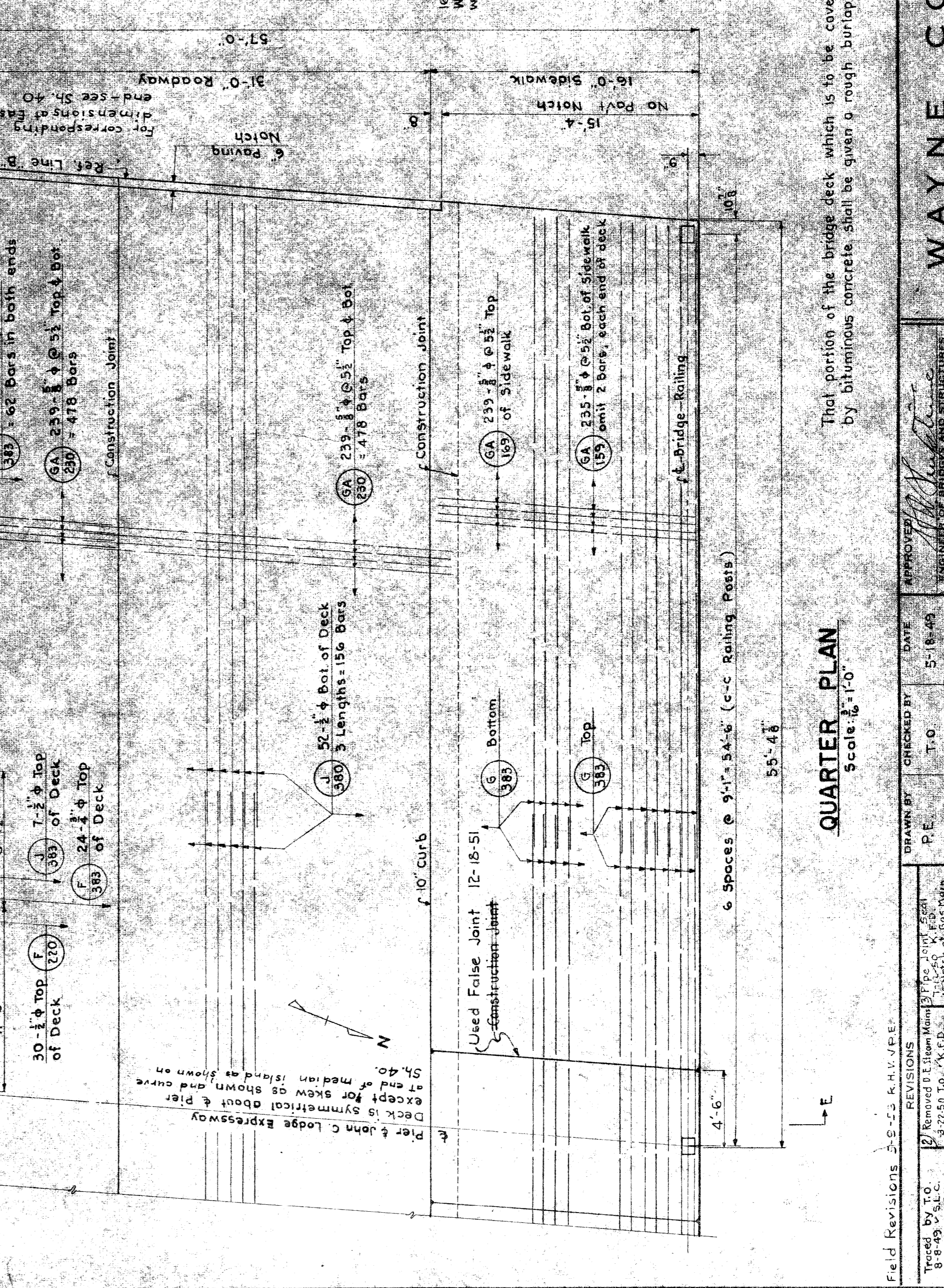
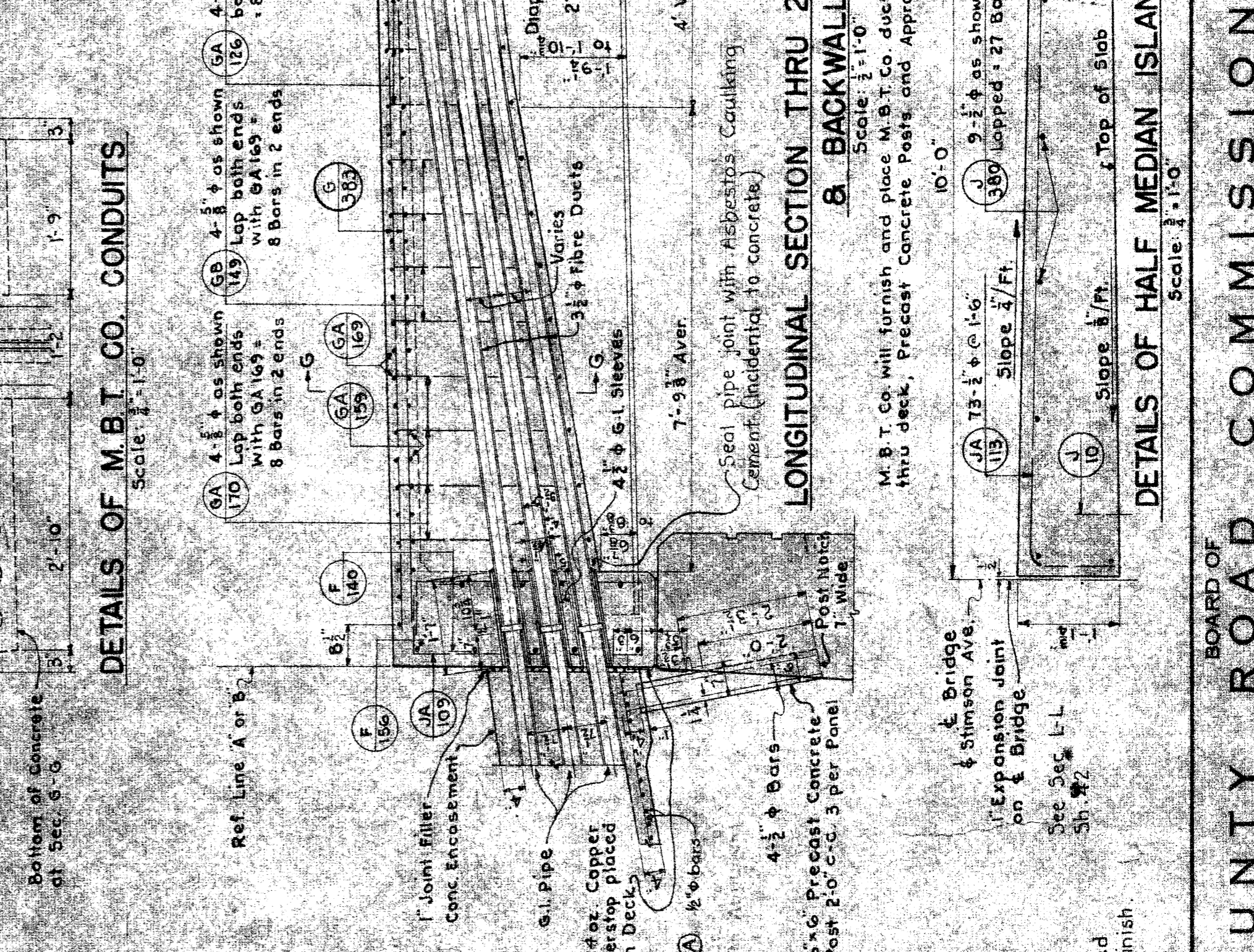
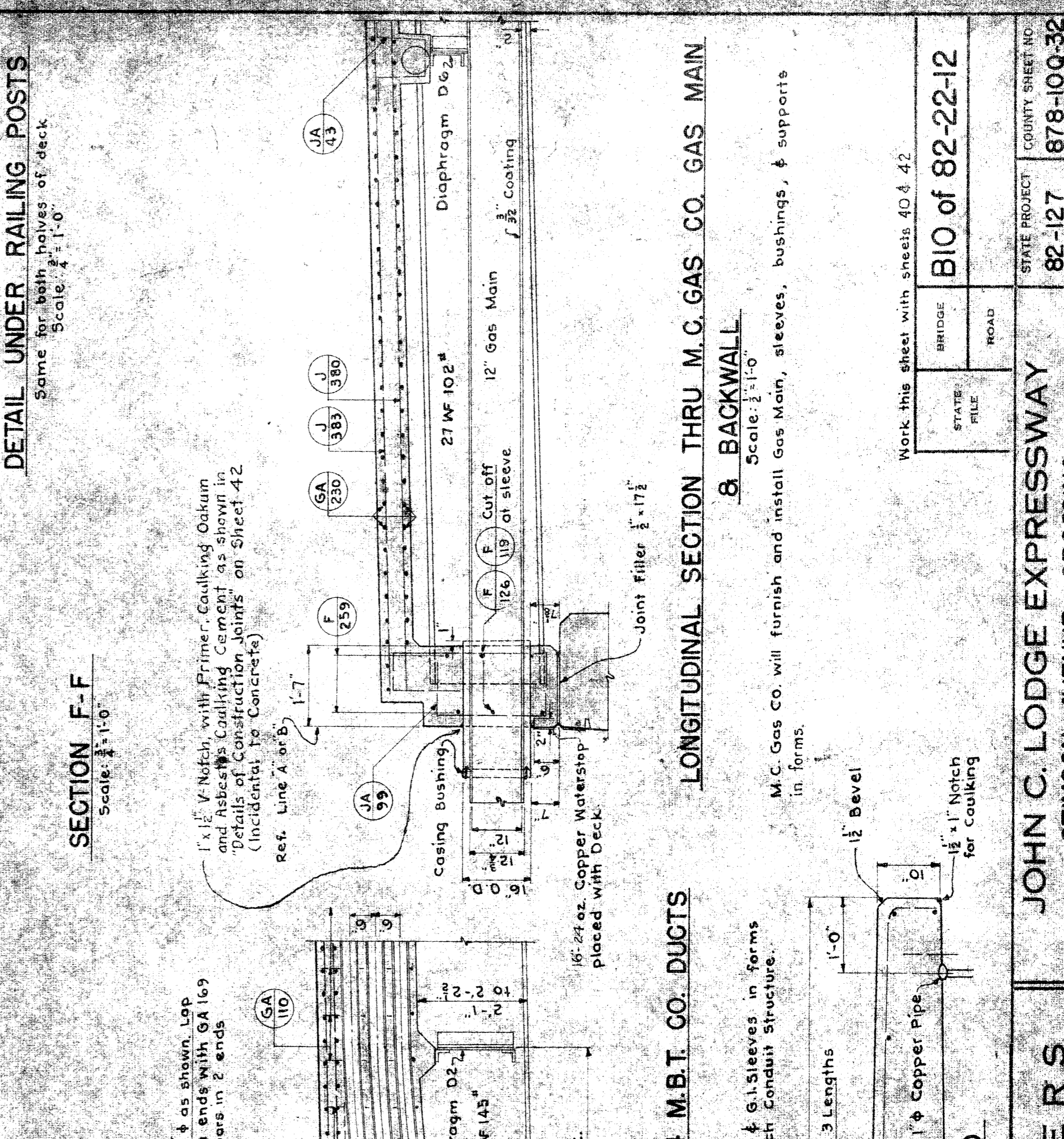
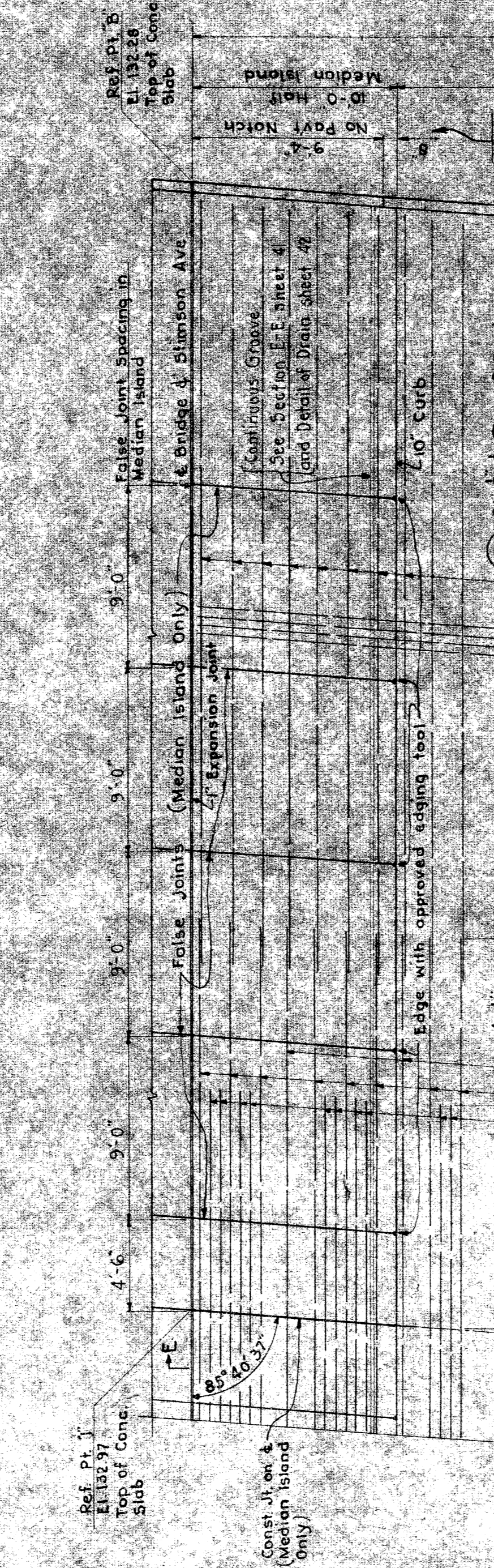
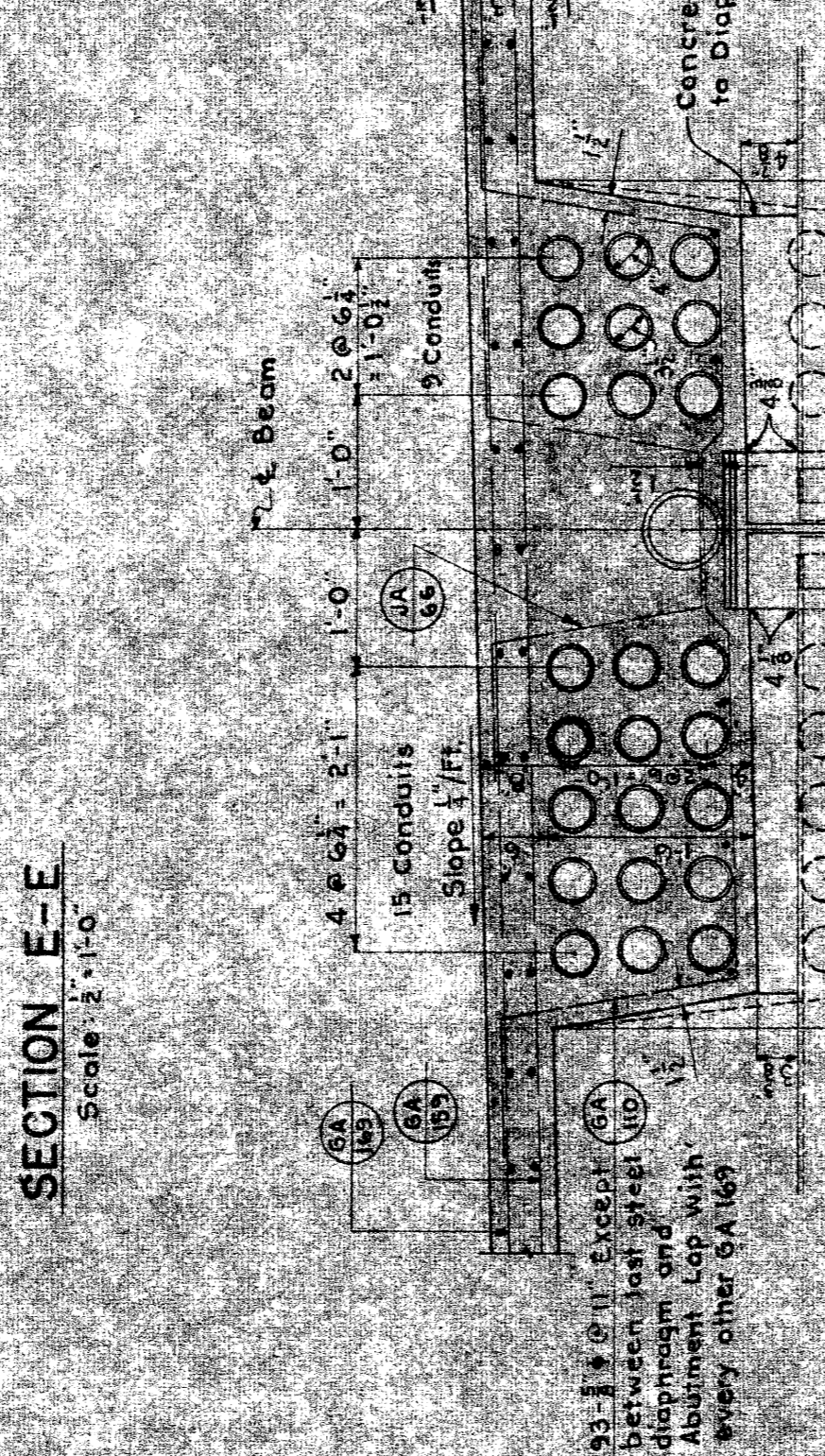
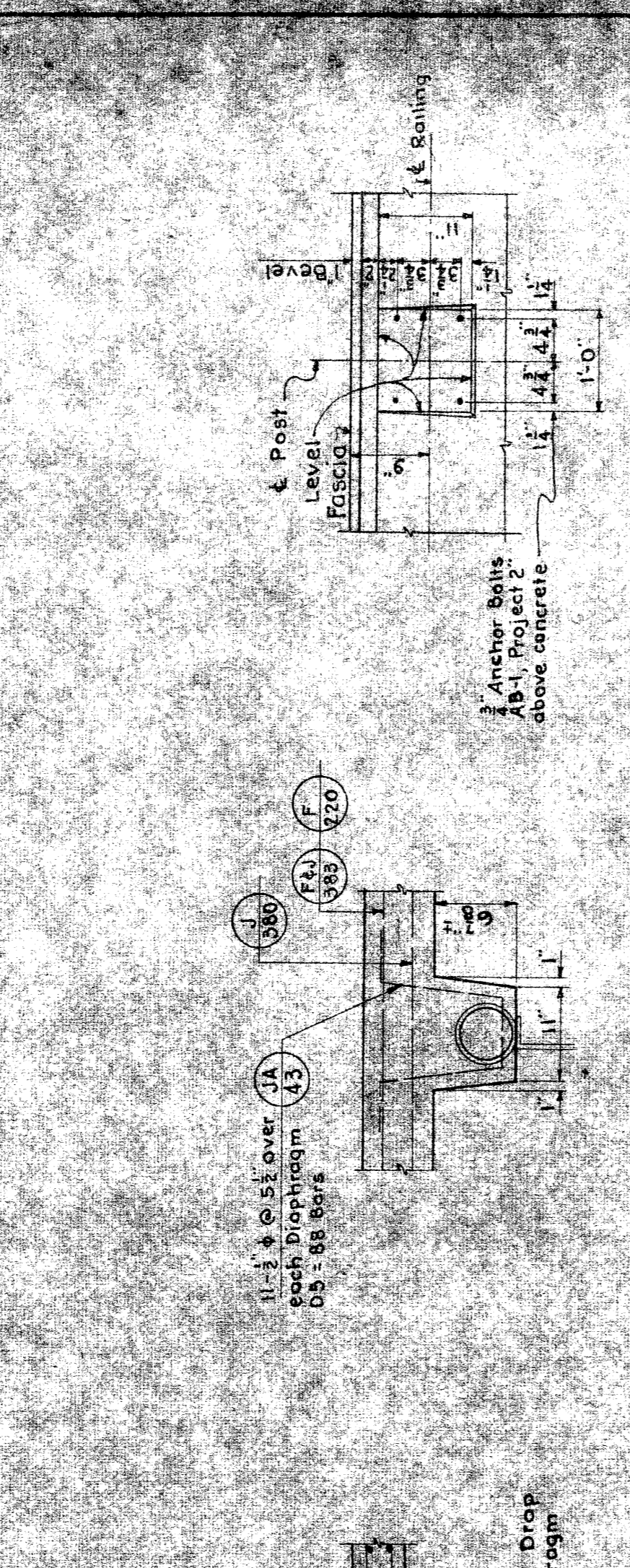
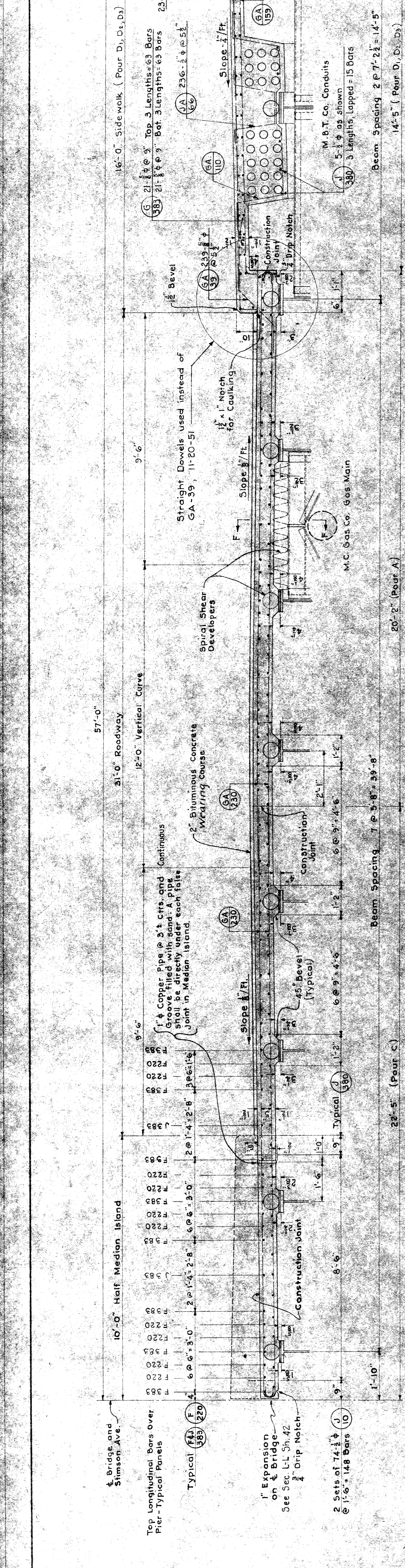
STATE PROJECT <b>82-127</b>	COUNTY SHEET NO. <b>878-10A-32</b>
ISSUE NO. <b>14</b>	SHEET NO. <b>30</b>
DATE <b>7-12-56</b>	
STATE FILE <b>BIO82-22-12</b>	
ROAD	
BRIDGE	
GENERAL PLAN OF STRUCTURE	
JOHN C. LODGE EXPRESSWAY STIMSON AVENUE CROSSING	
BOARD OF COMMISSIONERS WAYNE COUNTY ROTT, MICHIGAN	
CHARLES L. WILSON MICHAEL J. O'BRIEN JOHN F. O'HARA	
APPROVED ENGINEER OF BRIDGES AND STRUCTURES	DATE 8-7-46
CHECKED BY K.F.D.	DRAWN BY K.F.D.
CORRECT	REVISIONS
	1. Revised Deck Elevation 2. Revised Deck Elevation 3. Revised Deck Elevation 4. Revised Deck Elevation 5. Revised Deck Elevation 6. Revised Deck Elevation 7. Revised Deck Elevation 8. Revised Deck Elevation 9. Revised Deck Elevation 10. Revised Deck Elevation





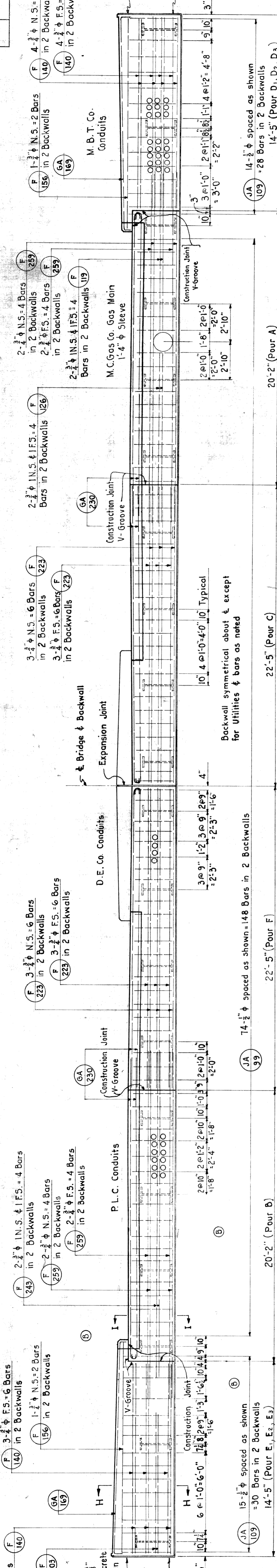


PROJECT NO.	STATE	MCH.	COUNTY	TOWNSHIP	SHEET NO.
82-127	MI	Wayne	Wayne		41

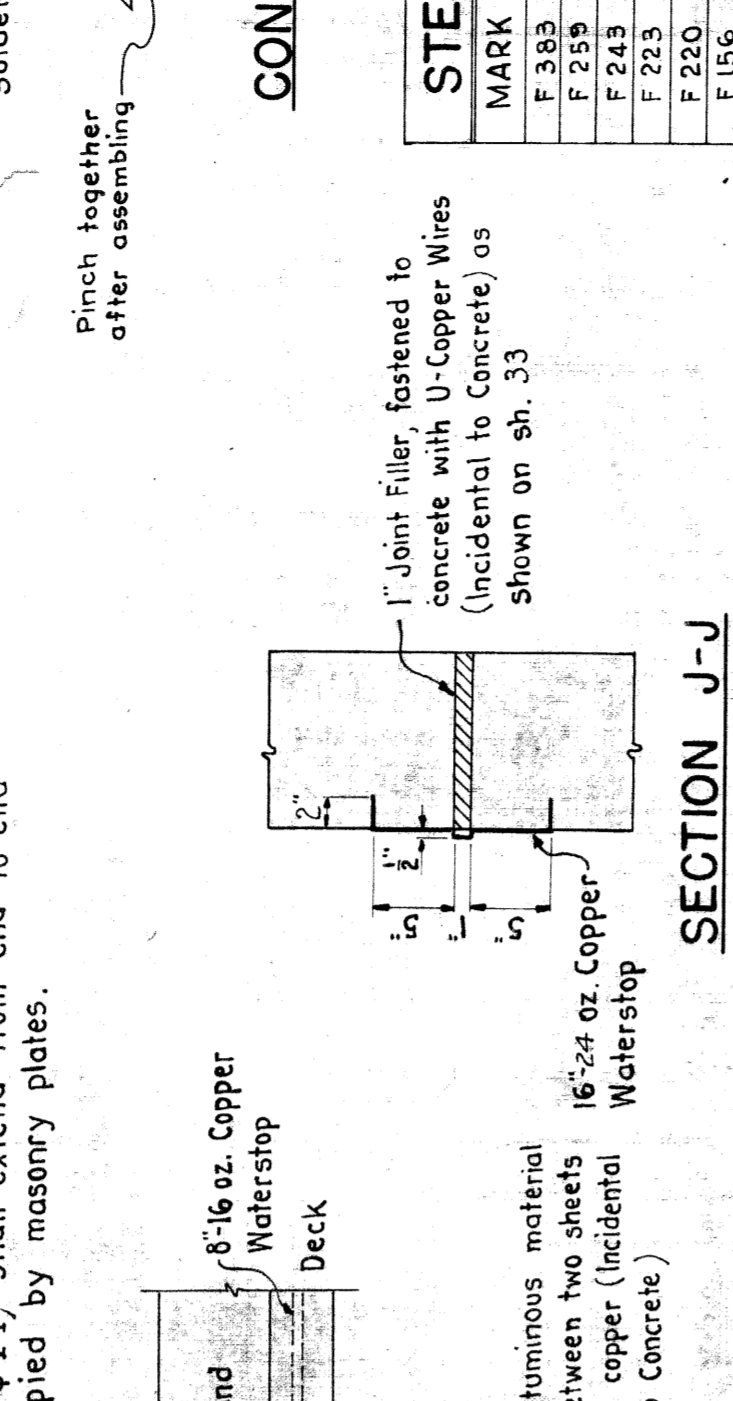




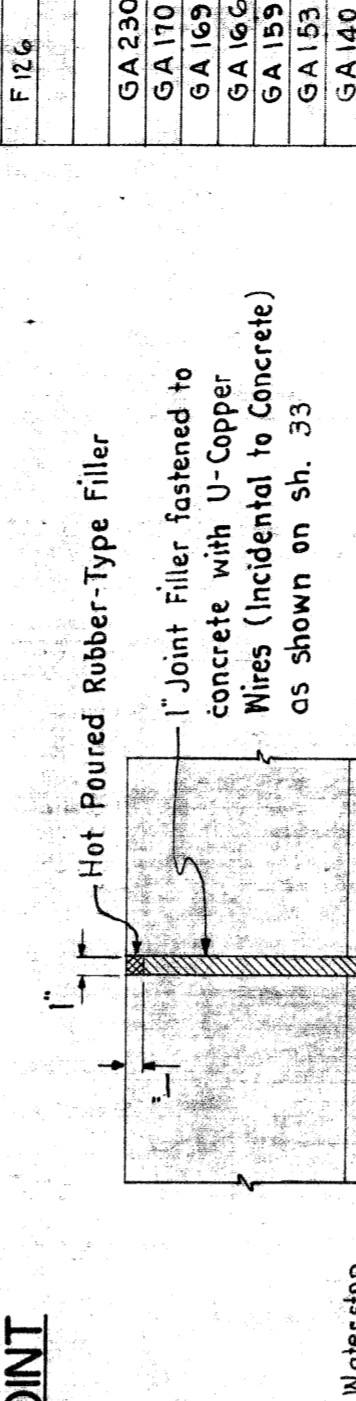
STATE	COUNTY	TOWNSHIP	SECTION	CONTRACT NO.
MI	WAYNE			



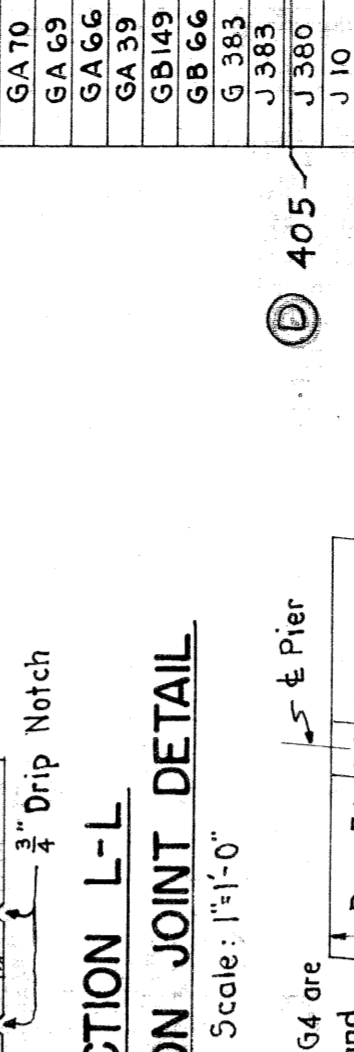
**EAST BACKWALL ELEVATION**  
Normal to & Bridge & Stimson Ave.  
Scale: 1/2" = 1'-0"



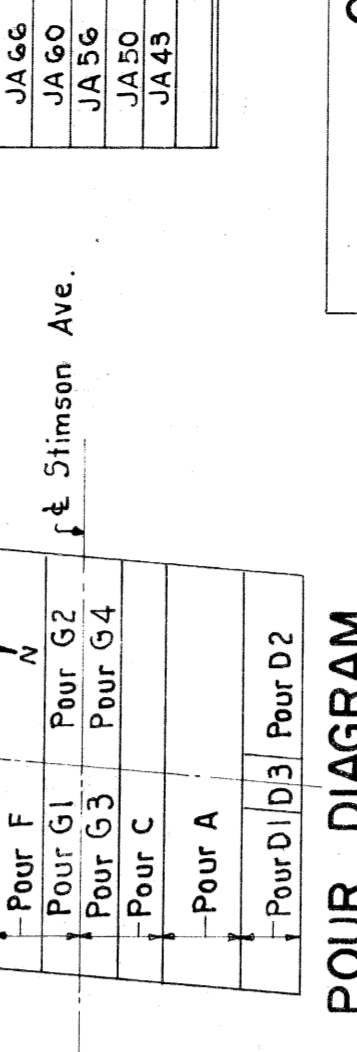
**DETAIL OF WATERSTOP AT EXPANSION JOINT**  
Scale: 1/2" = 1'-0"



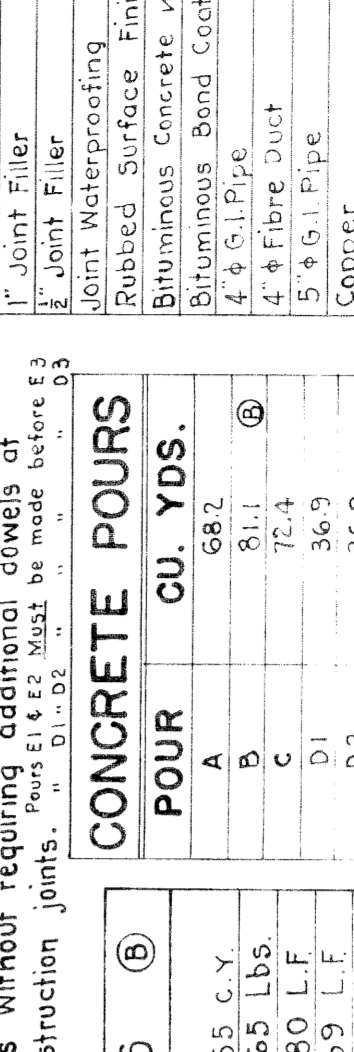
**DETAILS OF CONSTRUCTION JOINTS**  
Scale: 1/2" = 1'-0"



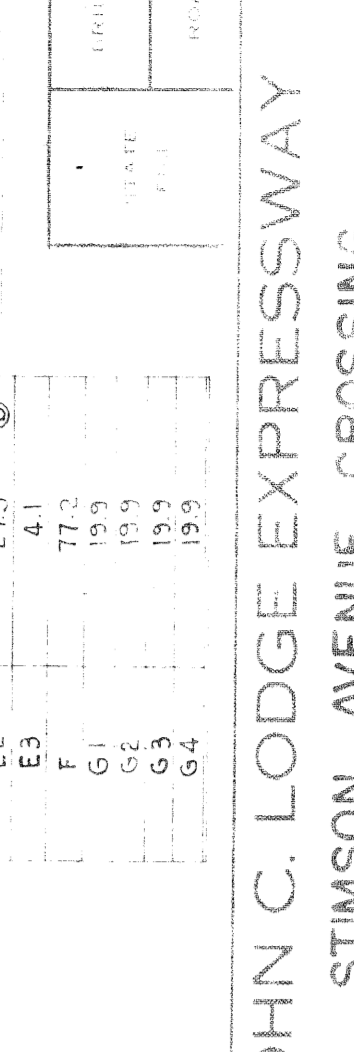
**DETAILS OF DRAIN**  
Scale: 1/2" = 1'-0"



**DETAIL AT FASCIA OF DECK SLAB**  
Scale: 1/2" = 1'-0"



**SECTION H-H**  
Scale: 1/2" = 1'-0"



**STEEL REINFORCEMENT**

MARK	SIZE	NO	LENGTH	REMARKS
F 259	2 1/4"	48	25'-3"	Straight
F 243	3 1/2"	24	22'-3"	
F 223	3 1/2"	24	22'-3"	
F 220	2 1/4"	24	22'-3"	
F 156	2 1/4"	24	22'-3"	
F 140	2 1/4"	24	22'-3"	
F 119	2 1/4"	24	22'-3"	
F 103	2 1/4"	24	22'-3"	
F 102	2 1/4"	24	22'-3"	
GA 230	1 1/4"	192	23'-0"	Bent
GA 170	1 1/4"	48	11'-0"	
GA 169	1 1/4"	48	11'-0"	
GA 166	1 1/4"	48	11'-0"	
GA 163	1 1/4"	48	11'-0"	
GA 159	1 1/4"	48	11'-0"	
GA 156	1 1/4"	48	11'-0"	
GA 153	1 1/4"	48	11'-0"	
GA 150	1 1/4"	48	11'-0"	
GA 147	1 1/4"	48	11'-0"	
GA 144	1 1/4"	48	11'-0"	
GA 141	1 1/4"	48	11'-0"	
GA 138	1 1/4"	48	11'-0"	
GA 135	1 1/4"	48	11'-0"	
GA 132	1 1/4"	48	11'-0"	
GA 129	1 1/4"	48	11'-0"	
GA 126	1 1/4"	48	11'-0"	
GA 123	1 1/4"	48	11'-0"	
GA 120	1 1/4"	48	11'-0"	
GA 117	1 1/4"	48	11'-0"	
GA 114	1 1/4"	48	11'-0"	
GA 111	1 1/4"	48	11'-0"	
GA 108	1 1/4"	48	11'-0"	
GA 105	1 1/4"	48	11'-0"	
GA 102	1 1/4"	48	11'-0"	
GA 99	1 1/4"	48	11'-0"	
GA 96	1 1/4"	48	11'-0"	
GA 93	1 1/4"	48	11'-0"	
GA 90	1 1/4"	48	11'-0"	
GA 87	1 1/4"	48	11'-0"	
GA 84	1 1/4"	48	11'-0"	
GA 81	1 1/4"	48	11'-0"	
GA 78	1 1/4"	48	11'-0"	
GA 75	1 1/4"	48	11'-0"	
GA 72	1 1/4"	48	11'-0"	
GA 69	1 1/4"	48	11'-0"	
GA 66	1 1/4"	48	11'-0"	
GA 63	1 1/4"	48	11'-0"	
GA 60	1 1/4"	48	11'-0"	
GA 57	1 1/4"	48	11'-0"	
GA 54	1 1/4"	48	11'-0"	
GA 51	1 1/4"	48	11'-0"	
GA 48	1 1/4"	48	11'-0"	
GA 45	1 1/4"	48	11'-0"	
GA 42	1 1/4"	48	11'-0"	
GA 39	1 1/4"	48	11'-0"	
GA 36	1 1/4"	48	11'-0"	
GA 33	1 1/4"	48	11'-0"	
GA 30	1 1/4"	48	11'-0"	
GA 27	1 1/4"	48	11'-0"	
GA 24	1 1/4"	48	11'-0"	
GA 21	1 1/4"	48	11'-0"	
GA 18	1 1/4"	48	11'-0"	
GA 15	1 1/4"	48	11'-0"	
GA 12	1 1/4"	48	11'-0"	
GA 9	1 1/4"	48	11'-0"	
GA 6	1 1/4"	48	11'-0"	
GA 3	1 1/4"	48	11'-0"	

**QUANTITIES**

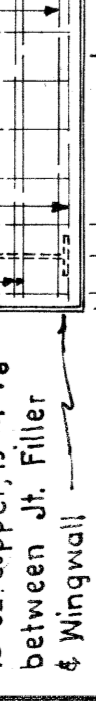
ITEM	QUANTITY	UNIT
Grade A (G) Concrete-Superstructure	517.1	C.Y.
Steel Reinforcement	10,507.2	LBS.
1" Joint Filler	220	S.F.
1/4" Copper Waterstop	241	S.F.
1/4" Copper	64	S.F.
Bituminous Concrete Waterproofing Course	409	S.F.
Bituminous Concrete	0	Tons
4" G.I. Pipe	192	LF
5" G.I. Pipe	38	LF
Copper	555	Lbs
Damp-proofing	650	S.F.
Hot Poured Rubber Type Filler	194	L.F.

**CONCRETE POURS**

POUR	CU. YDS.
A	68.2
B	81.7
C	172.4
D1	36.9
D2	36.9
D3	5.7
E1	27.5
E2	4.1
E3	77.2
G1	19.9
G2	19.9
G3	19.9
G4	19.9

**QUANTITY DECREASES**

Item	Quantity
Grade A (G) Concrete - Superstructure	55 C.Y.
Steel Reinforcement	665 Lbs.
4" G.I. Pipe	80 LF
4" G.I. Pipe	469 LF
5" G.I. Pipe	16 LF



WAYNE COUNTY ROAD COMMISSIONERS  
DETROIT, MICHIGAN

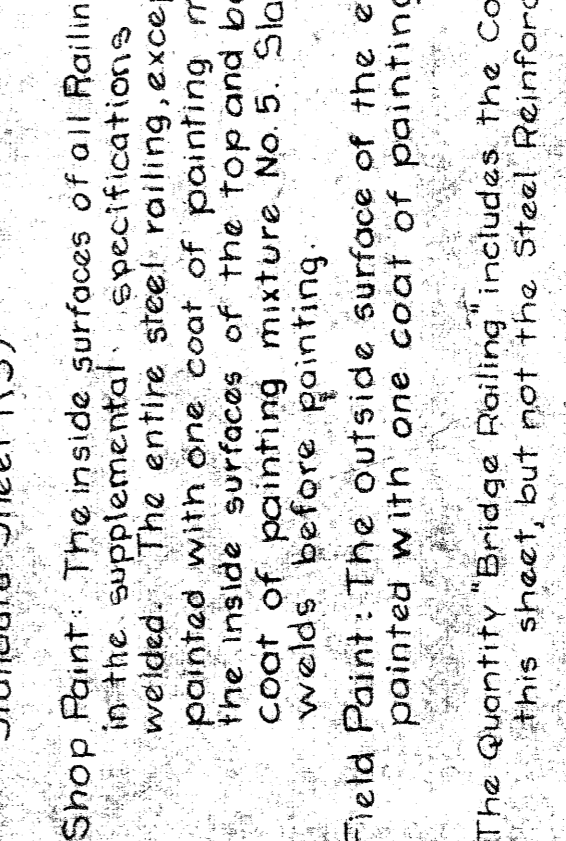
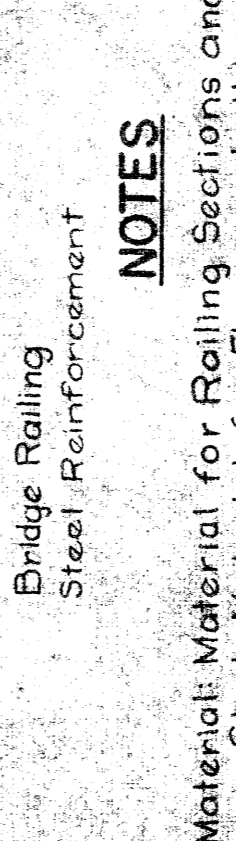
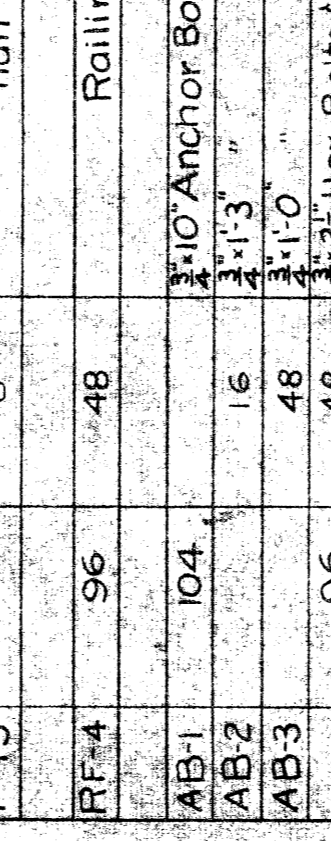
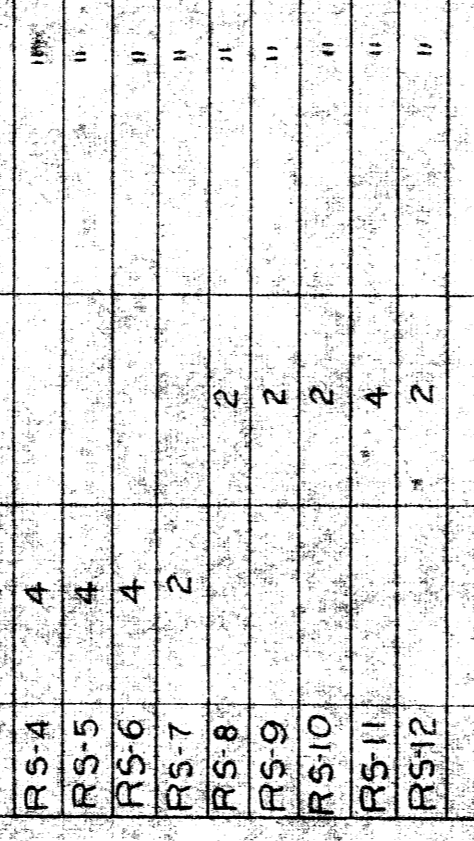
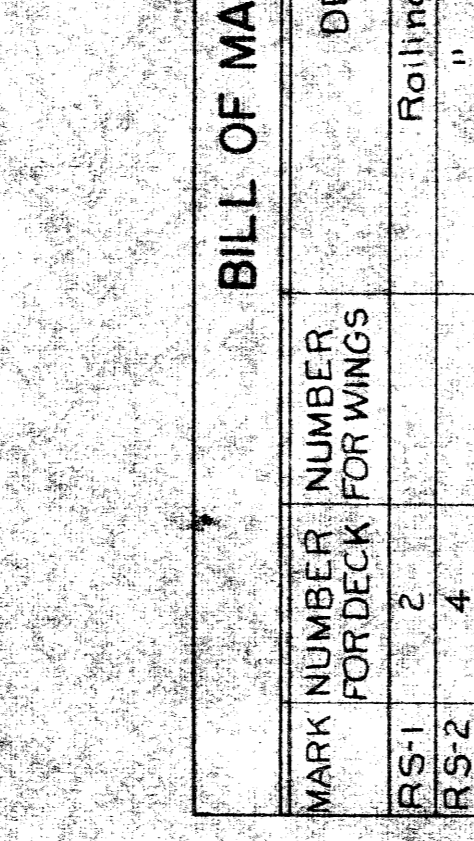
JOHN C. LODGE EXPRESSWAY  
STIMSON AVENUE CROSSING  
CONCRETE DECK DETAILS

Work this sheet with sheets 407.41  
Not to Scale

REINFORCEMENT DETAILS



STATE	COUNTY	TOWNSHIP	SECTION
MI	WAYNE		



**STEEL REINFORCEMENT FOR FOUR CONCRETE END POSTS**

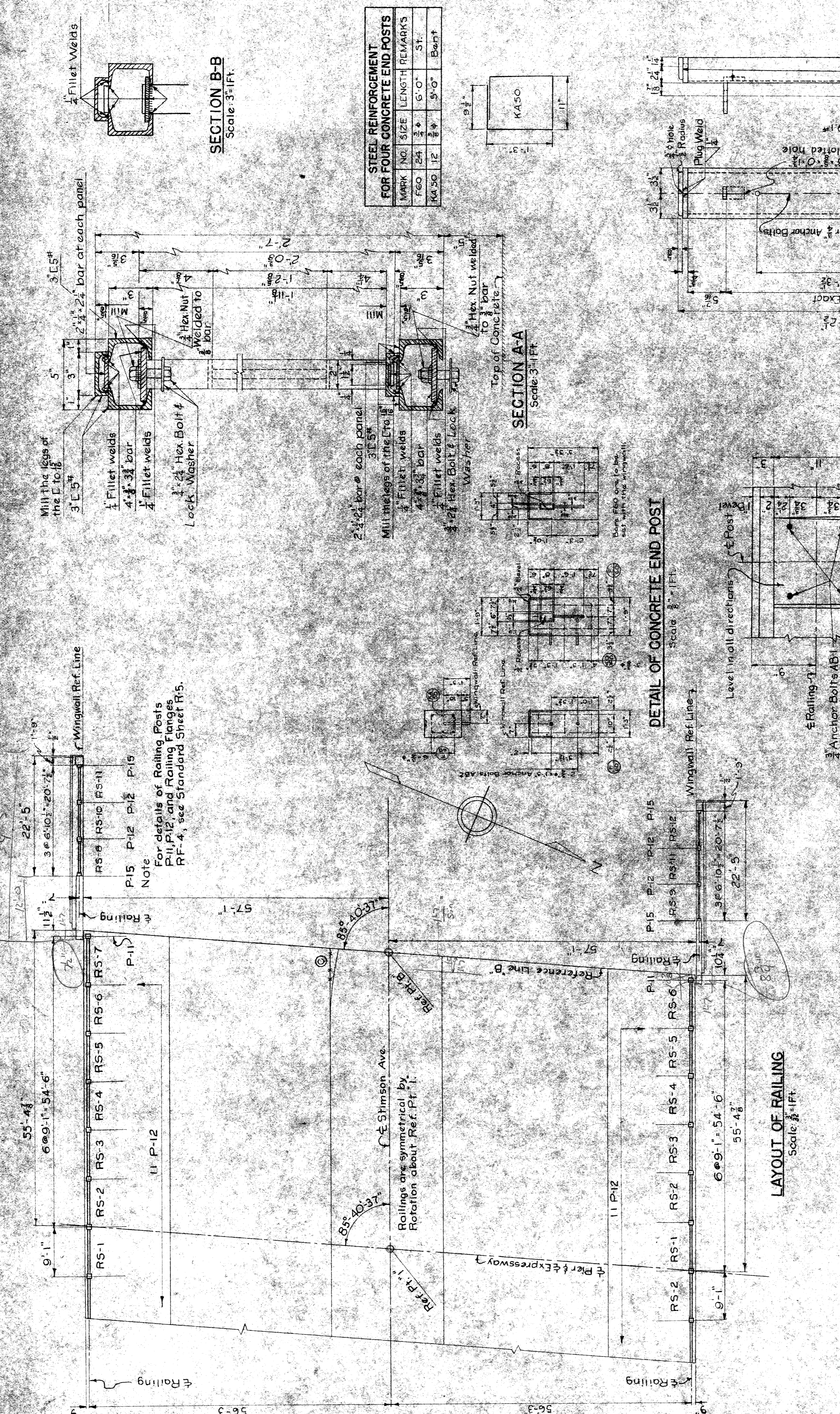
MARK	NO.	SIZE	LENGTH	REMARKS
FEO	24	3/4"	6'-0"	ST.
K4.50	12	3/4"	5'-0"	Bar#1

**BILL OF MATERIALS**

MARK	NUMBER FOR DECK	DESCRIPTION	TOTAL NUMBER
RS-1	2	Railing Section	2
RS-2	4	"	4
RS-3	4	"	4
RS-4	4	"	4
RS-5	4	"	4
RS-6	4	"	4
RS-7	2	"	2
RS-8	2	"	2
RS-9	2	"	2
RS-10	2	"	2
RS-11	4	"	4
RS-12	2	"	2
P-11	4	End Posts	4
P-12	22	Intermediate Posts	30
P-15	8	Half Posts	8
RF-4	96	Railing Flange	144
AB-1	104	1" x 10" Anchor Bolts with Hex Heads & Nuts	104
AB-2	16	3/4" x 3"	16
AB-3	48	3/4" x 10"	48
	48	3/4" x 10" Hex Bolts & Washers (No Nuts)	144

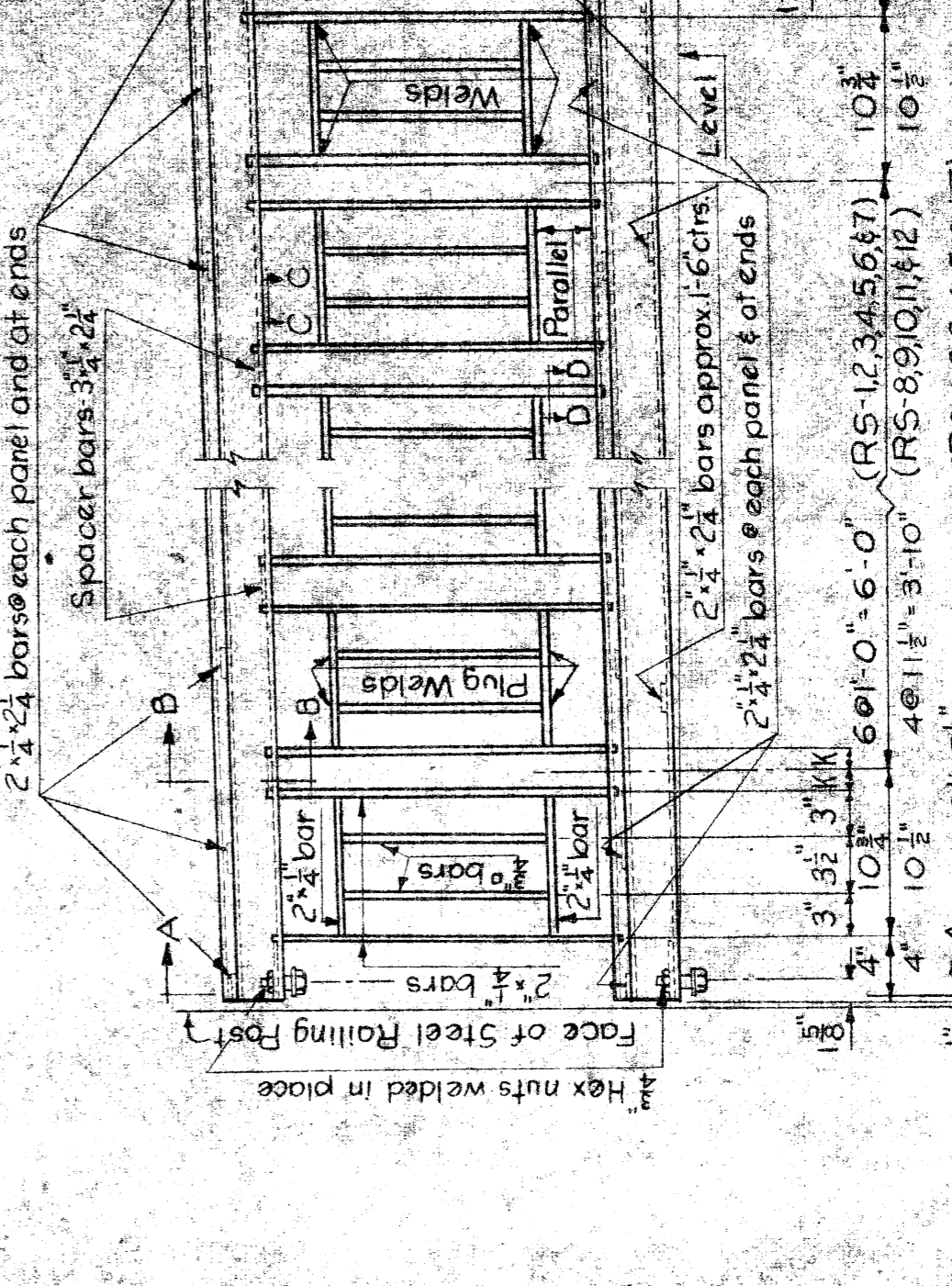
**QUANTITY**  
Bridge Railing 308.57 Lbs.  
Steel Reinforcement 239 Lbs.

**NOTES**  
Materials for Railing Sections and Posts shall be Structural Steel. Material for Flanges shall be Copper Base Alloy. (See Standard Sheet R5)  
Shop Paint: The inside surfaces of all Railing Posts shall be painted as required in the supplemental specifications after all parts have been welded. The entire steel railing, except the inside of posts, shall be painted with one coat of painting mixture No. 1A, and in addition, the inside surfaces of the top and bottom rails shall receive one coat of painting mixture No. 5. Slag shall be cleaned from all welds before painting.  
Field Paint: The outside surface of the entire steel railing shall be painted with one coat of painting mixture No. 5.  
The quantity "Bridge Railing" includes the Concrete End Post detailed on this sheet, but not the Steel Reinforcement in the post.



**Shapes For Railing Sections**

Railing Section	M	O
1	7	10
2	10	13
3	13	16
4	16	19
5	19	22
6	22	25
7	25	28
8	28	31
9	31	34
10	34	37
11	37	40
12	40	43



STATE	BRIDGE	COUNTY SHEET NO.
MI	BIO OF 82-22-12	82-127

ISSUE NO.	DATE	SHEET NO.
1	4-24-50	43