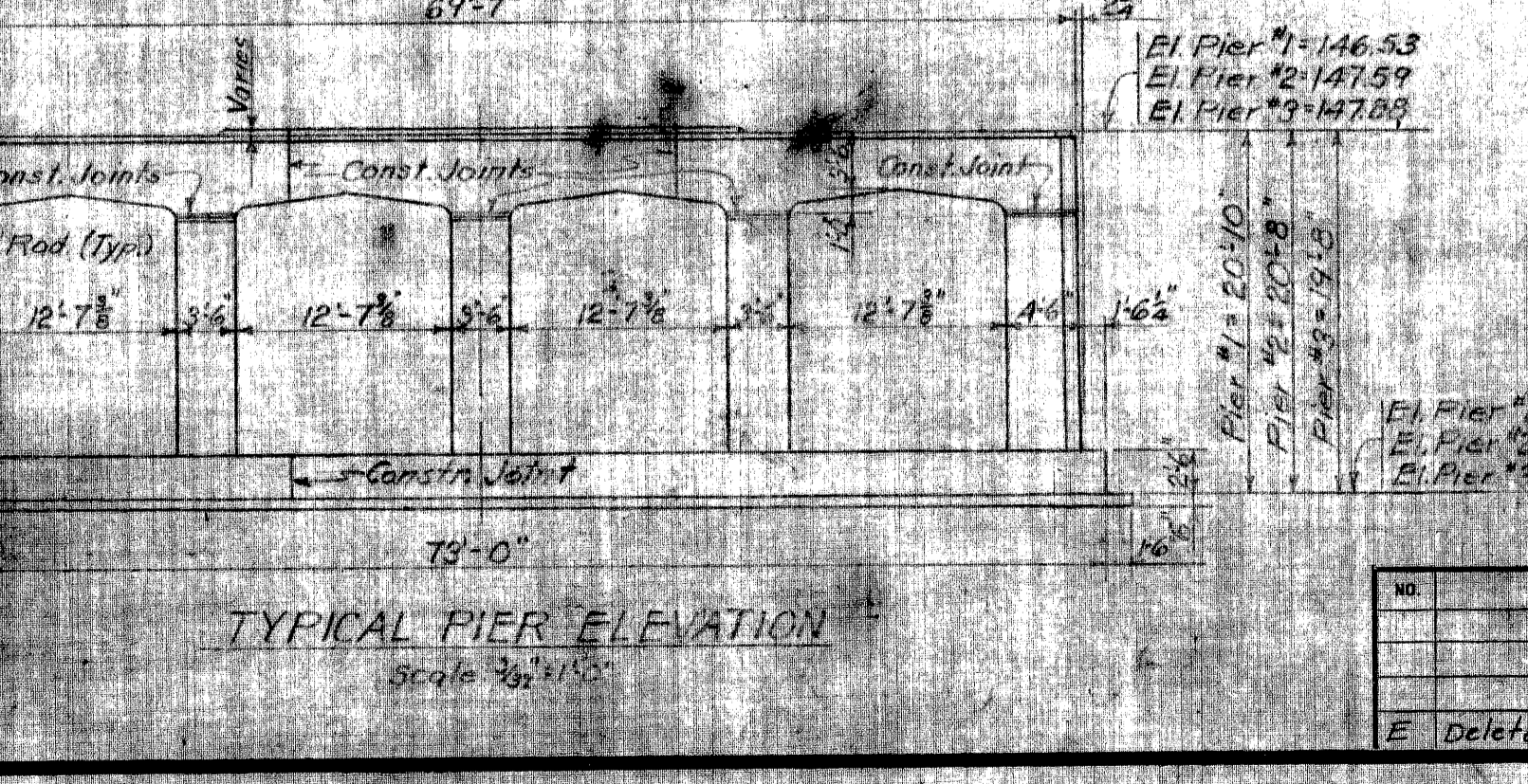
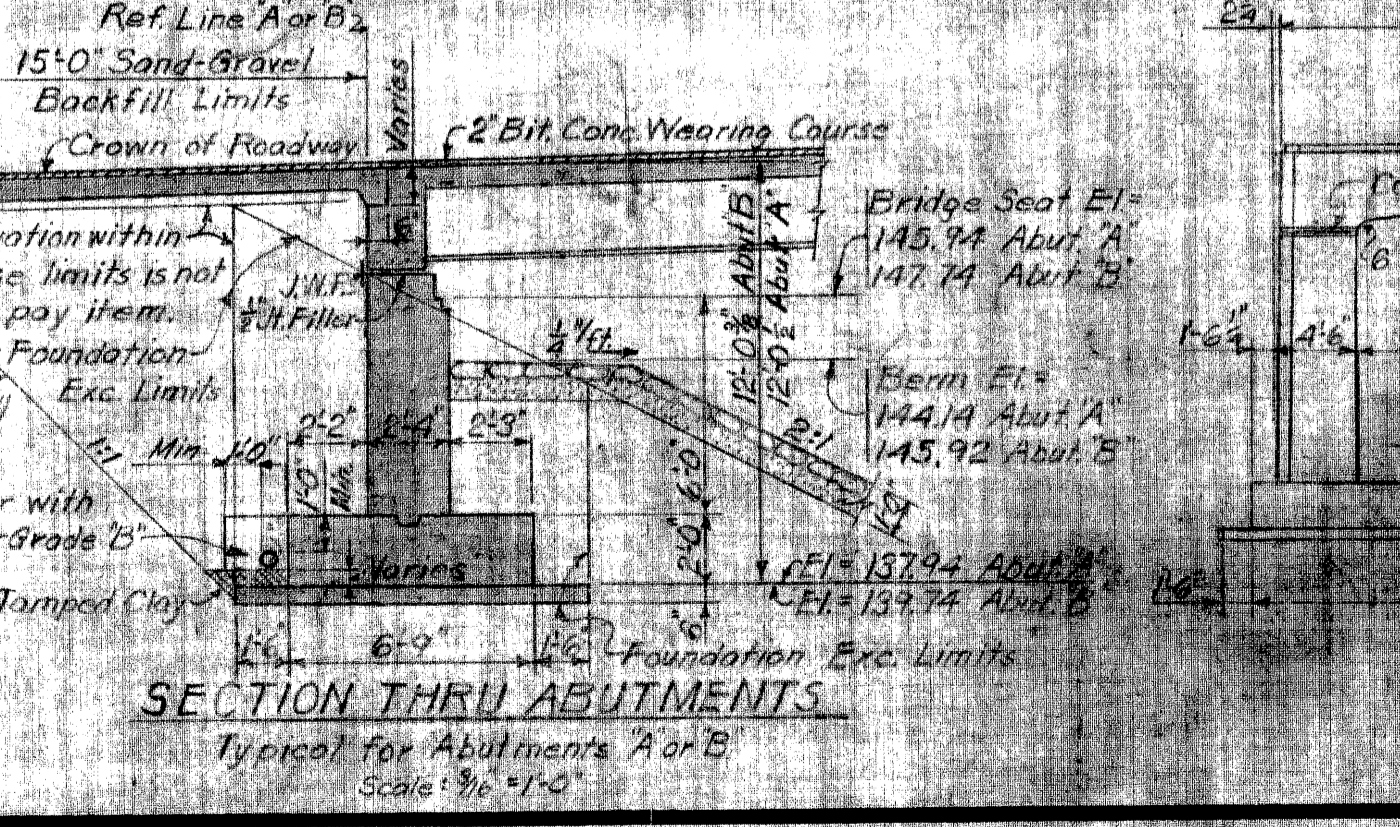
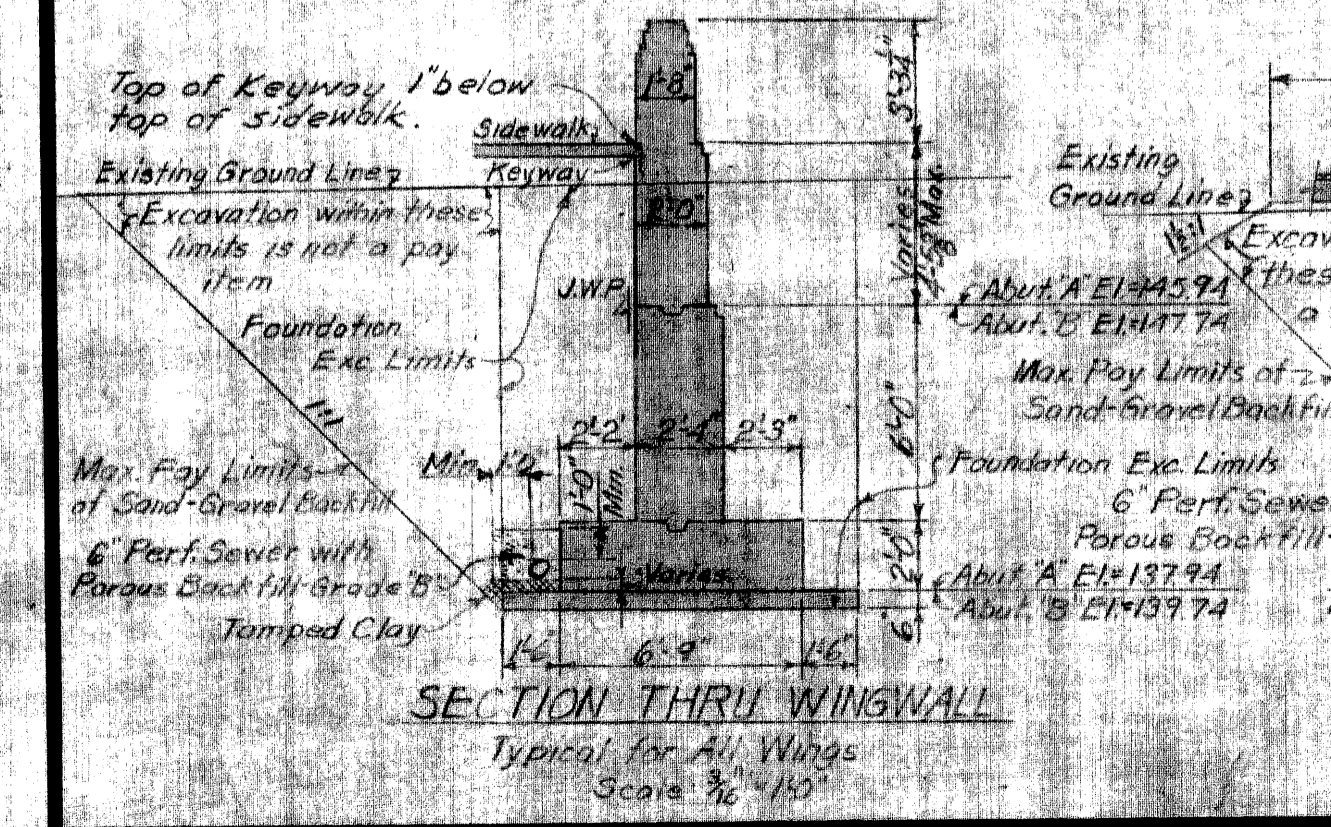
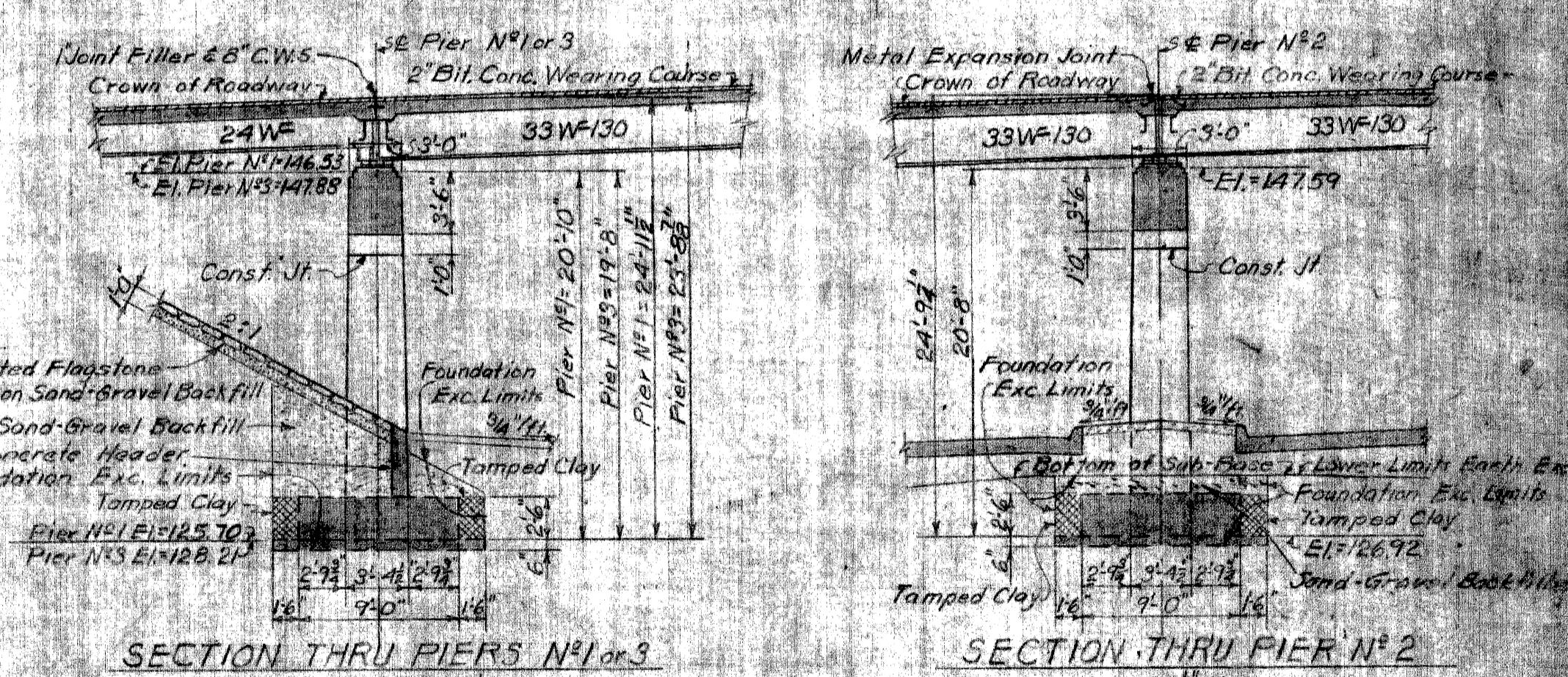
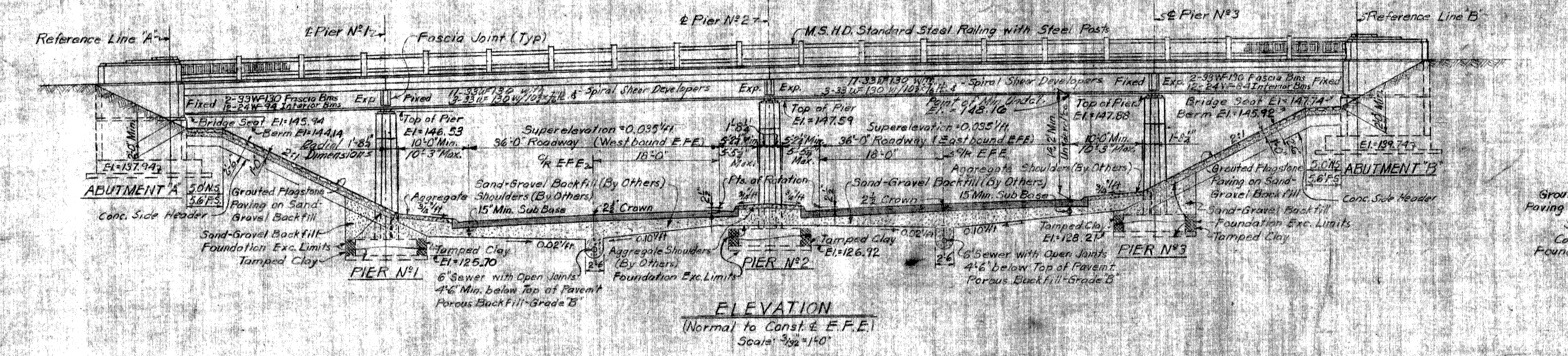


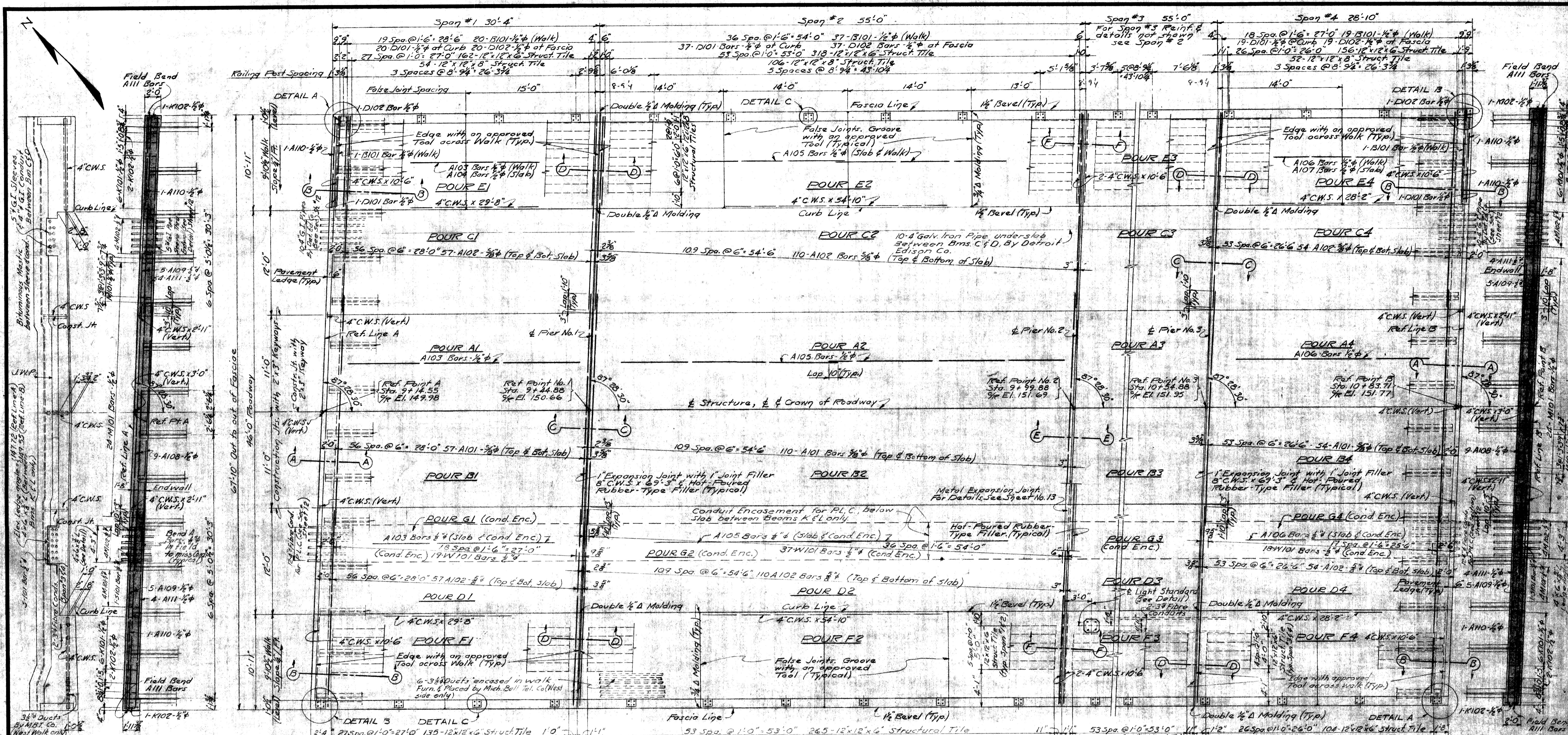
MISCELLANEOUS STRUCTURE QUANTITIES		
ITEMS	UNIT	AMOUNT
GRAOUTED FLAGSTONE PAVING	SQ. YDS.	497
SAND-GRAVEL BACKFILL (L.N.A.)	CU. YDS.	133
6" SEWER	LIN. FT.	107



MICHIGAN STATE HIGHWAY DEPARTMENT
 CHARLES M. ZIEGLER
 STATE HIGHWAY COMMISSIONER
 MT. ELLIOTT ST. (RELOC.) CROSSING THE EDEL FORD EXPRESSWAY IN DETROIT
GENERAL PLAN OF STRUCTURE

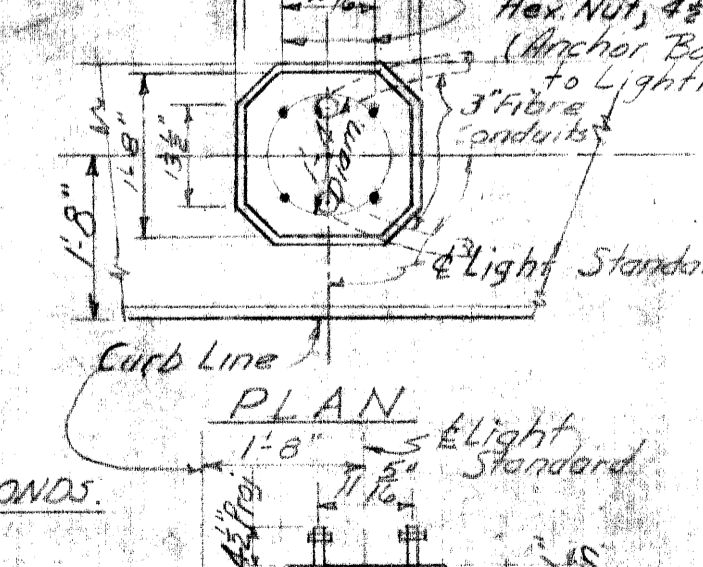
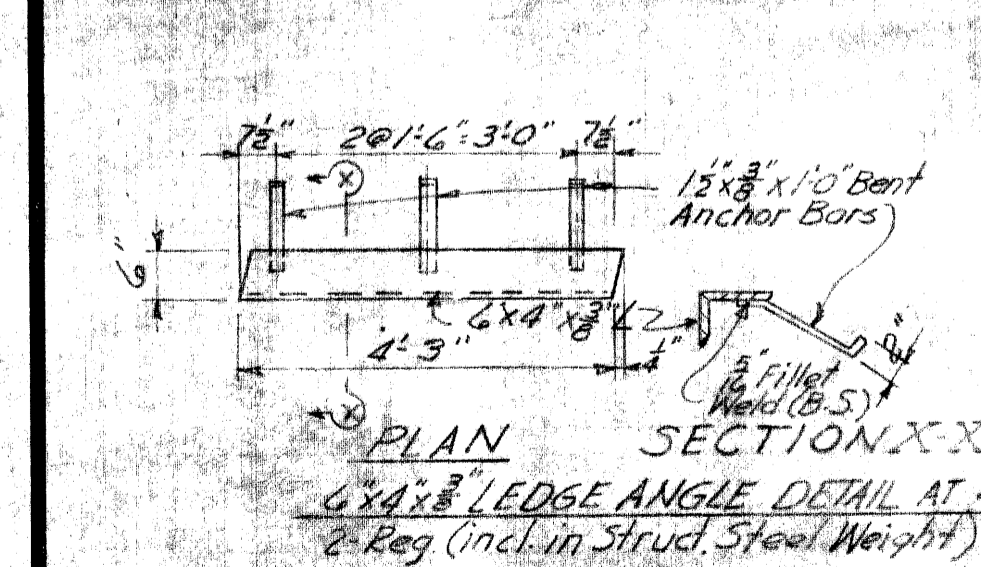
HAZELT & SERAL CONSULTING ENGINEERS FILE NO. 739
 APPROVED: [Signature] 2/19/55
 APPROVED: [Signature] 2-21-55
 APPROVED: [Signature]
 SQUAD BOSS: [Signature] 7-2-54
 DRAWN BY: JMC 8-17-53
 CHECKED BY: JHW 8-20-53
 SHEET 3 OF 5
 BRIDGE ENGINEER
 B60 of 82-22-10

NO.	DESCRIPTION	DATE	BY
E Deleted	CB's	10/27/55	RCL



ENDWALL ELEVATION SECTIONAL PLAN OF ENDWALL

SECTIONAL PLAN OF ENDWALL



GRADE A(G) CONCRETE QUANTITIES

POUR	LOCATION	CYSDS	POUR	LOCATION	CYSDS
A1	SLAB	10.5	D3	SLAB	30.6
A2	"	14.9	D4	SLAB	18.2
A3	"	14.9	E1	SIDEWALK	7.1
A4	"	9.4	E2	"	12.5
B1	"	10.3	E3	"	12.5
B2	"	14.9	E4	"	6.7
B3	"	14.9	F2	"	15.1
B4	"	8.9	F3	"	14.9
C1	"	20.0	F4	"	8.3
C2	"	31.3	G1	COND ENCM.	3.8
C3	"	19.2	G2	"	7.0
C4	"	19.4	G3	"	7.0
D2	"	30.6	G4	COND ENCM.	3.6

Total Superstructure Grade A(G) Conc. = 406.9 C.Y.

The above pour designations do not denote the sequence of the POURS.

MISCELLANEOUS QUANTITIES

ITEMS	UNIT	AMOUNT
12"x12"x6" STRUCTURAL TILE	EACH	1670
12"x12"x8" STRUCTURAL TILE	EACH	318
HOT-POURED RUBBER-TYPE FILLER	LM.FT.	206
COPPER	LBS.	239
BRIDGE RAILING	LN.FT.	334.5
1" JOINT FILLER	LN.FT.	149
4" JOINT FILLER	LN.FT.	690
2" BIT. CONC. WEARING COURSE	TONS	95
BOND COAT AE-2	GALS.	180
RUBBED SURFACE FINISH	SQ.FT.	823
1" FIBRE CONDUIT (P.L.C.)	LN.FT.	2020
3" FIBRE CONDUIT (P.L.C.)	LN.FT.	161
5" PIPE SLEEVE - PLACED	EACH	80

GENERAL NOTES

For Bevel, Molding, Bar Chairs, & Railing Details see M.S.H.D. Standard Drawing R-4. For Railing Post Details see R-5. C.W.S. indicates Copper Waterstop. J.W.P. indicates Joint Waterproofing. P.L.C. indicates Public Lighting Commission. Procedure for placing Hot-Poured Rubber-Type Filler in Roadway Construction Joints: Step 1: Seal the joint in concrete slab only. Step 2: Place the Bituminous Concrete Wearing Course across the joint. Step 3: Cut the Bituminous Wearing Course over the joint and complete the placing of the Hot-Poured Rubber-Type Filler to the top of the roadway surface. For slab thickness Diagram see 3h/11. For Details A, B, C & Sections 11 to 15 inclusive see Sheet No. 11. For conduit details see Sheet #12. This sheet to be worked with Sheet No. 11 & 12.

QUANTITIES CHARGED TO DETROIT EDISON CO.

ITEMS	UNIT	AMOUNT
STRUCTURAL STEEL	LBS.	510
GRADE A(G) CONCRETE	CYSDS.	1.8
5" A.G. PIPE SLEEVE-PLACED	EACH	80
1" JOINT FILLER	SQ. FT.	10

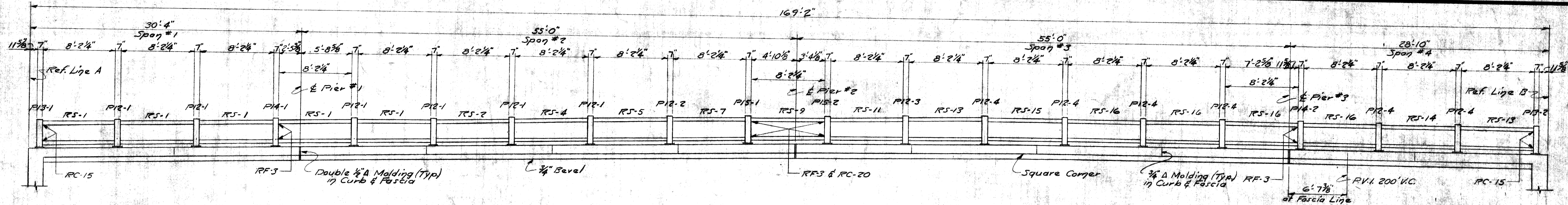
MICHIGAN STATE HIGHWAY DEPARTMENT
 CHARLES M. ZIEGLER
 STATE HIGHWAY COMMISSIONER
 MT. ELLIOTT ST. (RELOC.) CROSSING THE EDSEL FORD EXPRESSWAY IN DETROIT
SUPERSTRUCTURE DETAILS
 HAZLET & ERDAL - CONSULTING ENGINEERS FILE NO. 759

APPROVED: [Signature] 2/18/55
 CHIEF BRIDGE DRAFTSMAN
 APPROVED: [Signature] 2-21-55
 ENGINEER OF BRIDGE DESIGN
 APPROVED: [Signature]
 BRIDGE ENGINEER

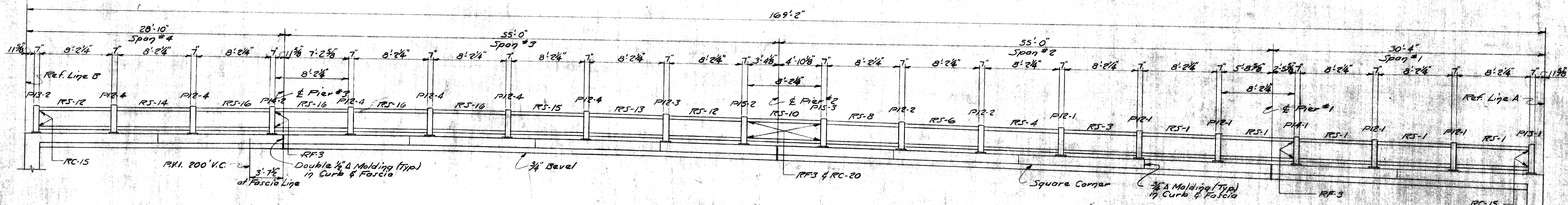
REVISIONS

NO.	DESCRIPTION	DATE	BY
1	C. Rev. Quant. Pour A1, A4, E, B1	2-21-55	[Signature]

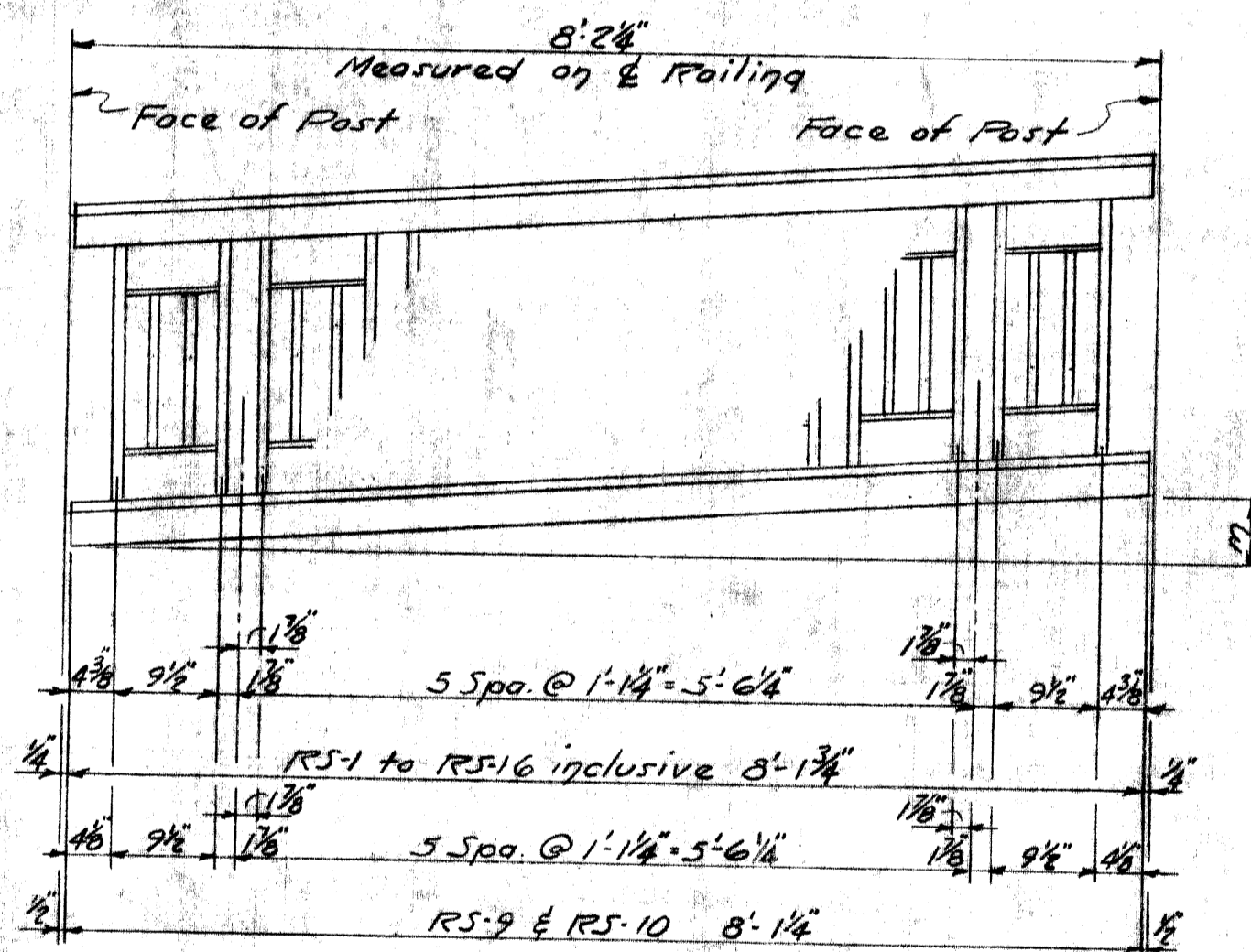
SHARD BOSS 2/17/55
 DRAWN BY J.M.K. 2-18-55
 TRACKED BY [Signature]
 CHECKED BY R.L.T. 2-21-55
 SHEET 10 OF 59
 B60 OF 82-22-10



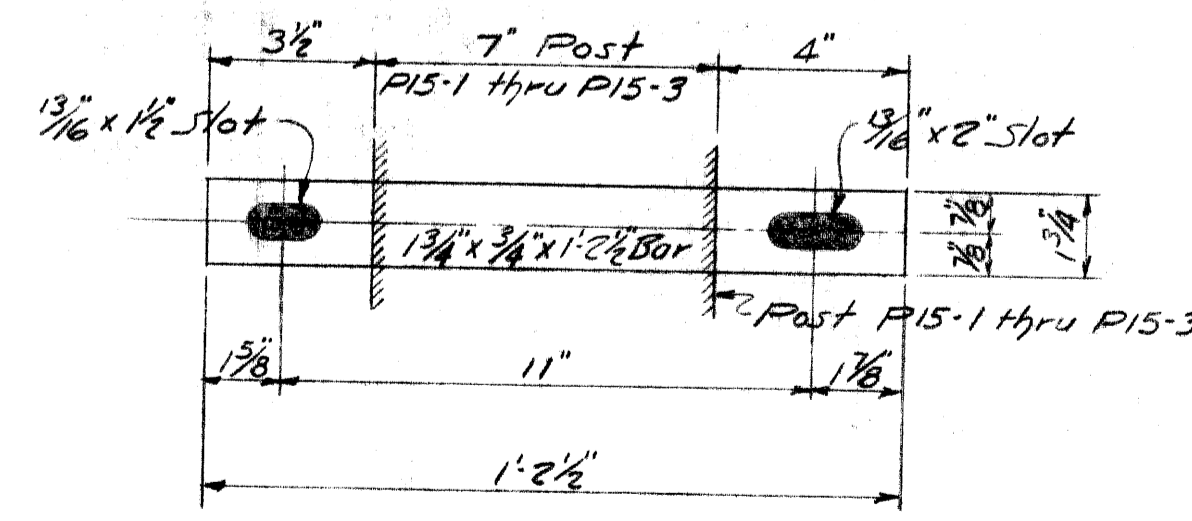
RAILING ELEVATION- WEST FASCIA



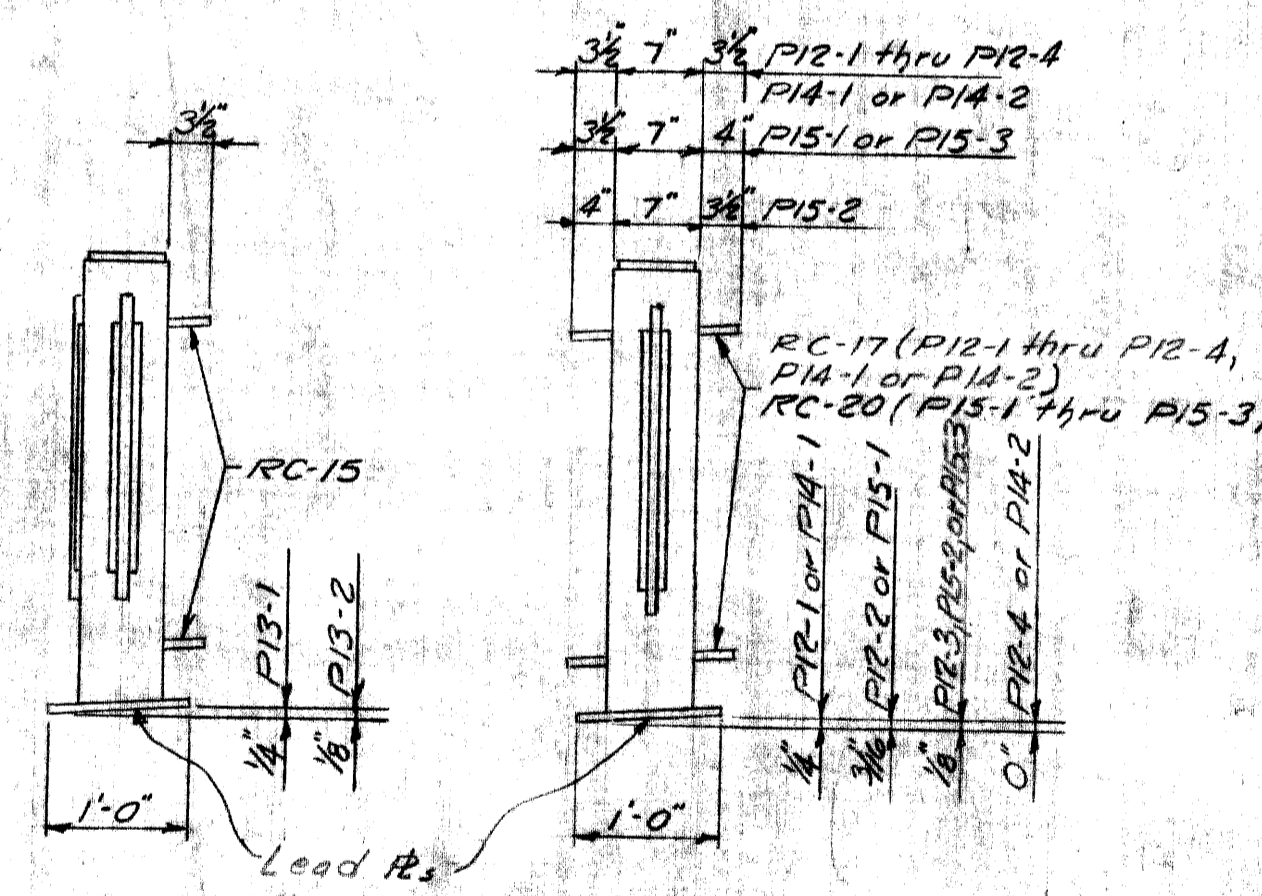
RAILING ELEVATION- EAST FASCIA



RAILING SECTION



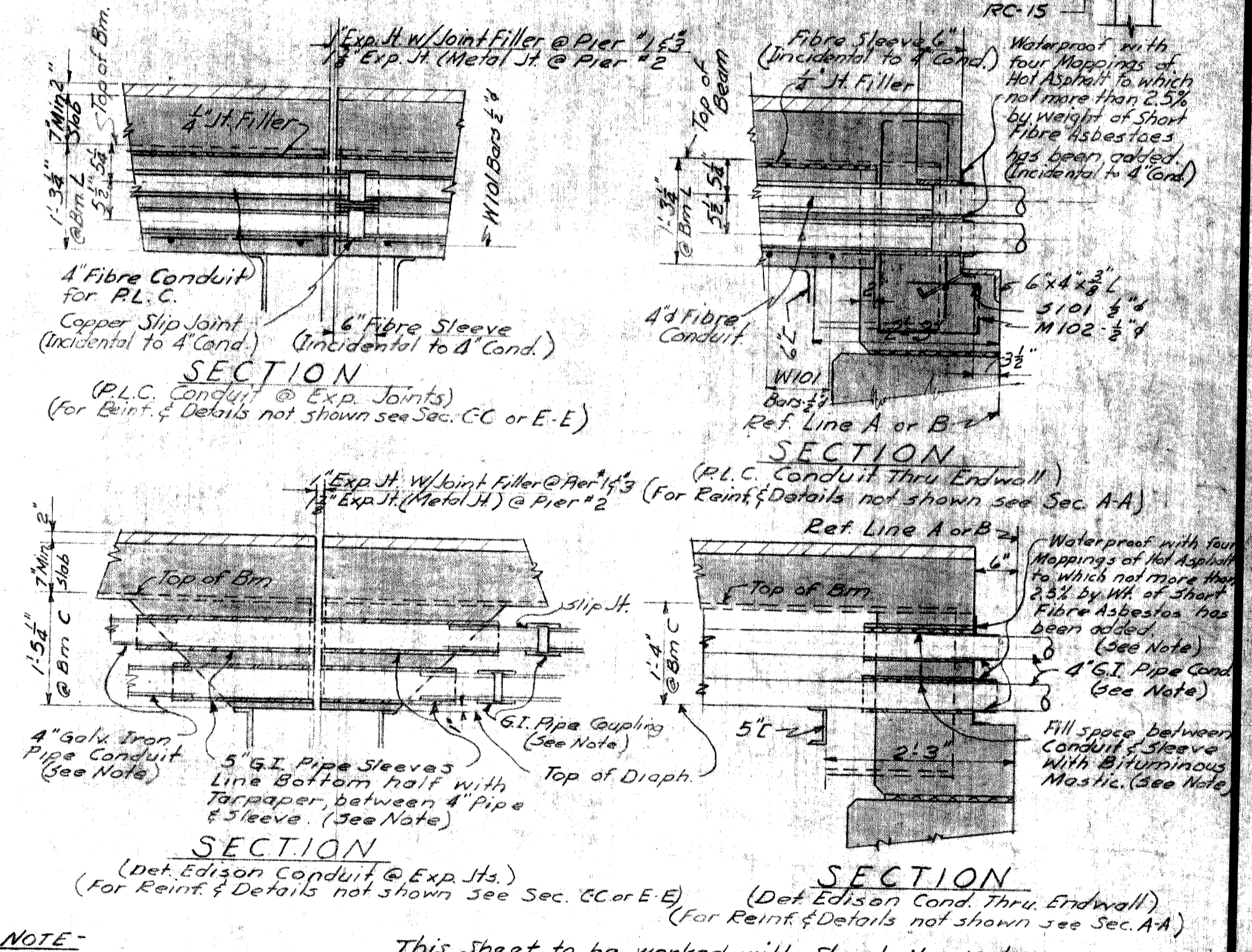
RAILING CLIP RC-20 (8 Required)



RAILING POSTS

NOTES
 P15 Posts are the same as P14 Posts except RC-20 clips are used on P15 Posts.
 All Railing Flanges to be RF-4 and all Railing Clips to be RC-17 unless otherwise noted.
 For Railing, Molding, and Bevel details not shown here - see M.S.H.D. Standard Drawing R-4.
 For Railing Posts, Railing Clip, and Railing Flange details not shown - see M.S.H.D. Standard Drawing R-5.

BILL OF RAILING MATERIAL		
MARK	NO REQD	DESCRIPTION
RS-1	10	RAILING SECTION
RS-2	1	"
RS-3	1	"
RS-4	2	"
RS-5	1	"
RS-6	1	"
RS-7	1	"
RS-8	1	"
RS-9	1	"
RS-10	1	"
RS-11	1	"
RS-12	2	"
RS-13	2	"
RS-14	2	"
RS-15	2	"
RS-16	2	"
P12-1	11	RAILING POST
P12-2	3	"
P12-3	2	"
P12-4	12	"
P13-1	2	"
P13-2	2	"
P14-1	2	"
P14-2	2	"
P15-1	1	"
P15-2	2	"
P15-3	1	RAILING POST
RF-3	16	RAILING FLANGE
RF-4	136	RAILING FLANGE
RC-15	8	RAILING CLIP
RC-17	64	RAILING CLIP
RC-20	8	RAILING CLIP
LEAD #	40	LEAD # or FABRIKERA ALT.
BOLTS	152	3/8" x 2 1/2" HEX HD BOLTS
WASHERS	152	3/8" x 2 1/2" LOCK WASHERS
ANCHOR BOLTS	160	3/4" x 10" BOLTS, 5/8" NUT, PROJECT 2"
APPROXIMATE TOTAL RAILING WT = 21,900#		



NOTE
 5/8" I.P. Pipe Sleeves to be furnished by Detroit Edison Co. and installed by the Bridge Contract or a G.I. Pipe Conduit, Pipe Couplings, for Paper Water-proofing, and Bituminous Mastic to be furnished & installed by the Detroit Edison Co.

This Sheet to be worked with Sheet Nos. 10 & 11

MICHIGAN STATE HIGHWAY DEPARTMENT
 CHARLES M. ZIEGLER
 STATE HIGHWAY COMMISSIONER

MT. ELLIOTT ST. (RELOC.) CROSSING THE EDEL FORD EXPRESSWAY IN DETROIT

RAILING & SUPERSTRUCTURE DETAILS
 HAZELT & ERDAL - CONSULTING ENGINEERS FILE NO. 759

APPROVED: [Signature] 2/19/55
 CHIEF BRIDGE DRAFTSMAN

APPROVED: [Signature] 2-21-55
 ENGINEER OF BRIDGE DESIGN

APPROVED: _____
 BRIDGE ENGINEER

SQUAD BOSS: [Signature] 7-6-54
 DRAWN BY: S.M.K. 10-4-53
 TRACED BY: [Signature]
 CHECKED BY: R.L.T. 10-23-53
 SHEET 12 OF 59

B60 of 82-22-10

REVISIONS			
NO.	DESCRIPTION	DATE	BY