

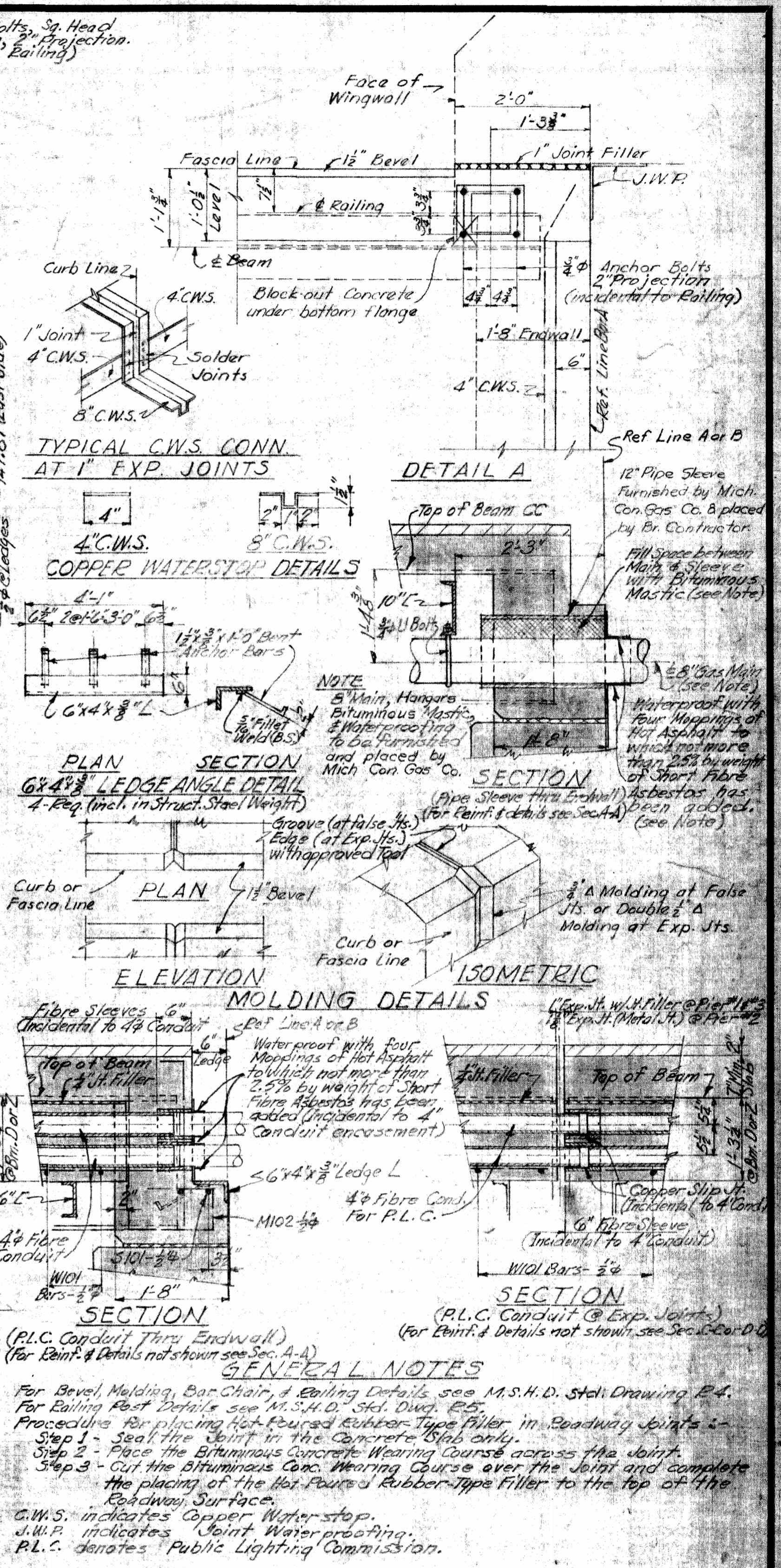
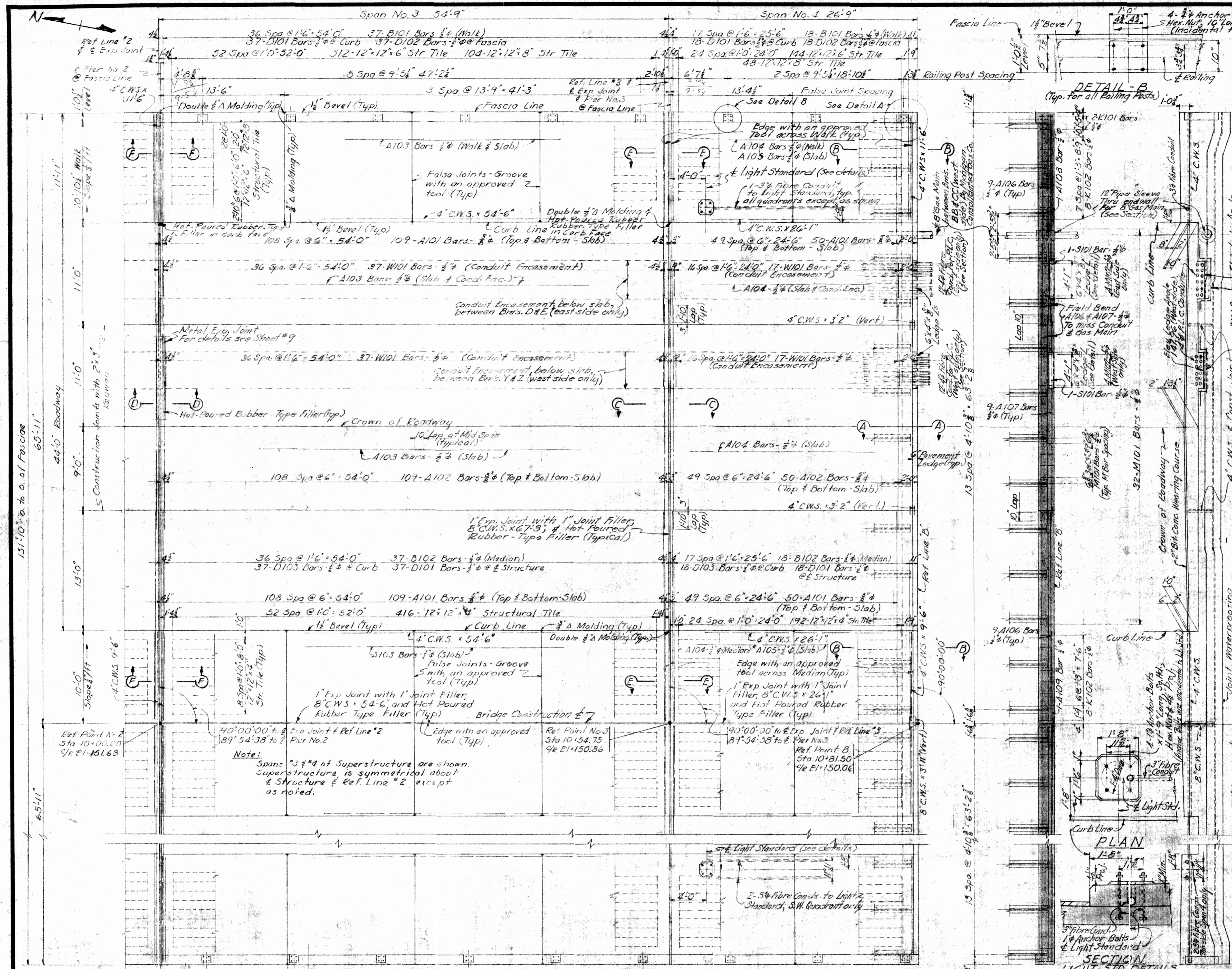
ITEM	UNIT	AMOUNT
Unclassified Excavation	Cu Yds	250
Steel Reinforcement (Sewer Encasement)	Lbs	4104
Grads (A.C.) Concrete (Sewer Encasement)	Cu Yds	155
Sand Gravel Backfill (Leaky Measure)	Cu Yds	860
Grouted Flagstone Paving	Cu Yds	655
6" Sewer	Lin Ft	85

NOTE
Piers are parallel to \pm of Expressway. Abutments and transverse joints in Slab are at Right Angles to \pm of East Grand Blvd.

MICHIGAN STATE HIGHWAY DEPARTMENT
CHARLES M. ZIEGLER
STATE HIGHWAY COMMISSIONER
E. GRAND BLVD. CROSSING THE EDEL FORD EXPRESSWAY IN CITY OF DETROIT
GENERAL PLAN OF STRUCTURE

HAZLET & ERAL CONSULTING ENGINEERS FILE NO. 733
APPROVED: [Signature] 7/15/54
DESIGNED: [Signature] 7-4-54
ENGINEER OF BRIDGE DESIGN
BRIDGE ENGINEER

SQUAD BOSS: ZION C-11-54
DRAWN BY: J.M.C. 6-3-53
CHECKED BY: W.H.H. 6-5-53
SHEET 3 OF 23
B57 of 82-22-10



Note: Spans 3 & 4 of Superstructure are shown. Superstructure is symmetrical about Structure & Ref. Line 2 except as noted.

GENERAL NOTES
 For Bevel, Moulding, Bar Chair, & Railing Details see M.S.H.D. Std. Drawing E-4.
 For Railing Post Details see M.S.H.D. Std. Drawing E-5.
 Proceeding for placing Hot-Poured Rubber-Type Filler in Roadway Joints -
 Step 1 - Seal the Joint in the Concrete Slab only.
 Step 2 - Place the Bituminous Concrete Wearing Course across the joint and complete the placing of the Hot-Poured Rubber-Type Filler to the top of the Roadway Surface.
 C.W.S. indicates Copper Water-stop.
 J.W.P. indicates Joint Water-proofing.
 P.L.C. denotes Public Lighting Commission.

Work this sheet with sheets No. 8 & No. 9

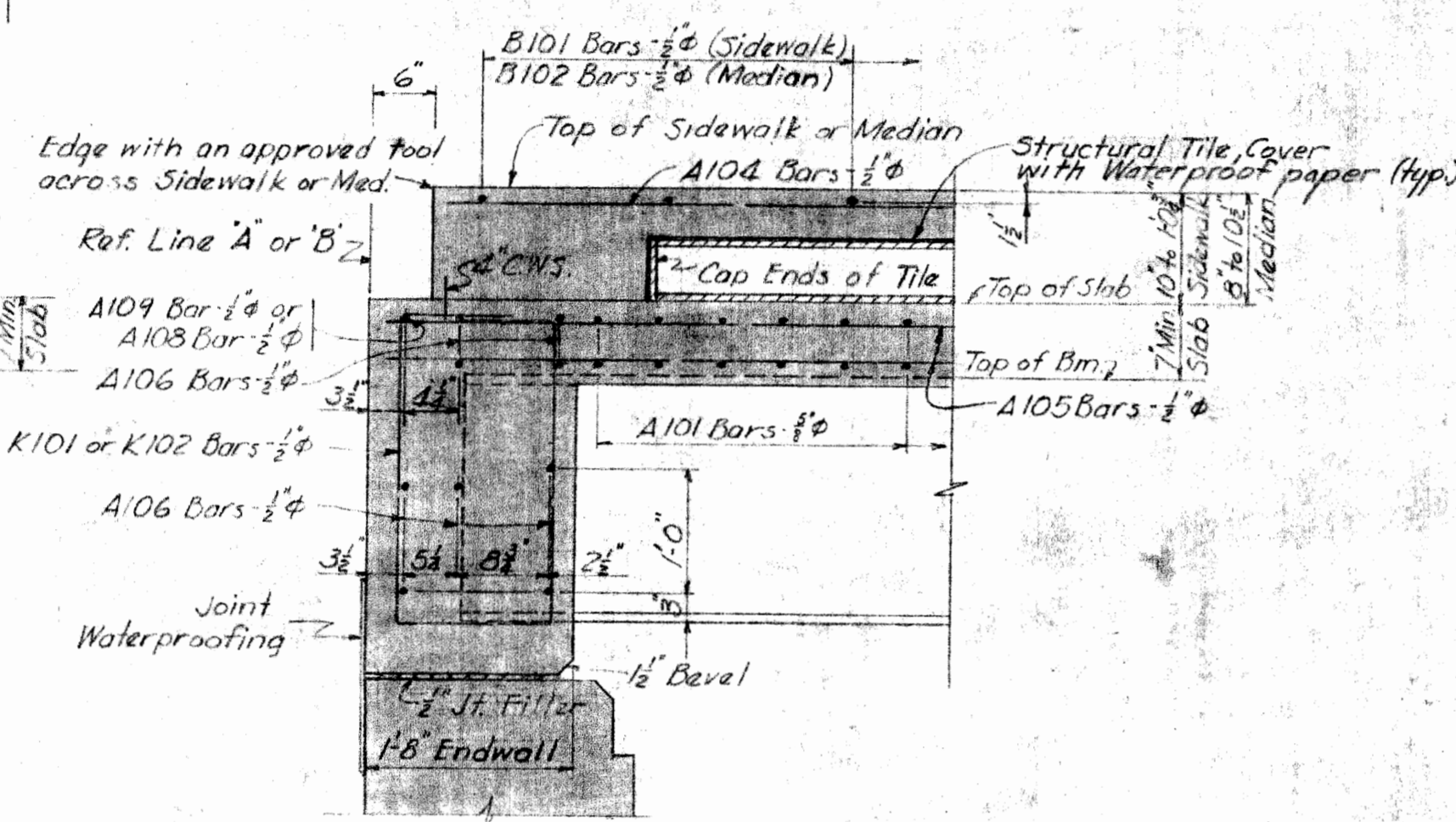
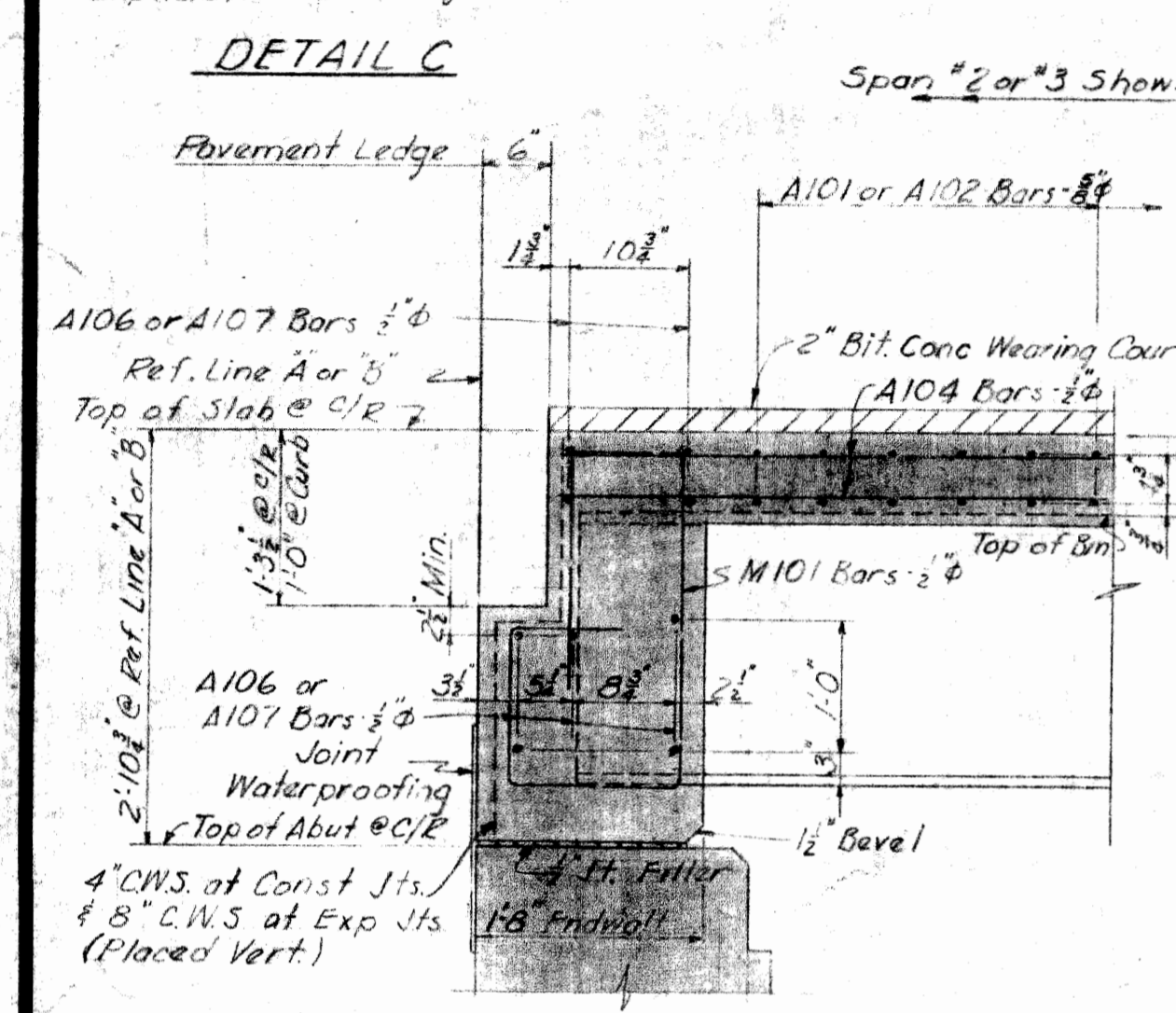
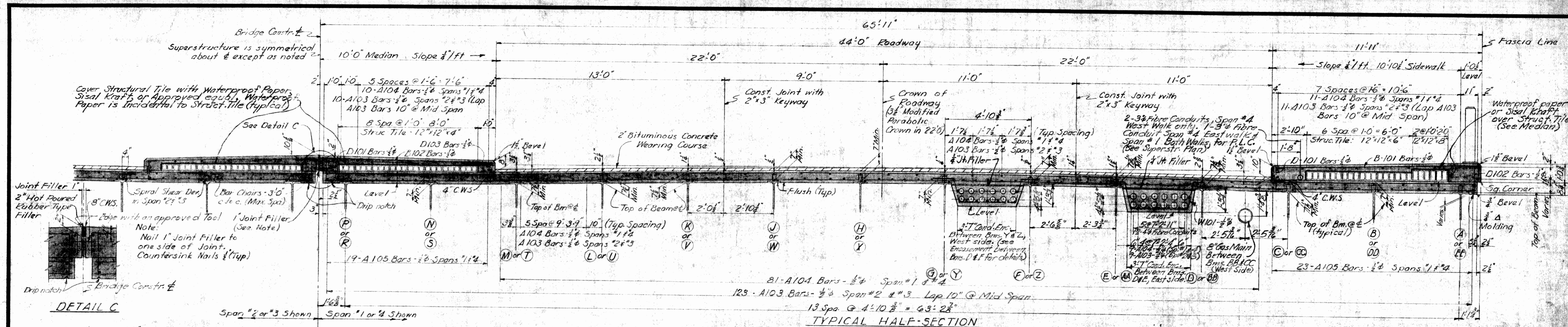
MICHIGAN STATE HIGHWAY DEPARTMENT
 CHARLES M. ZIEGLER
 STATE HIGHWAY COMMISSIONER
 GRAND BLVD. CROSSING THE EDSEL FORD EXPRESSWAY IN THE CITY OF DETROIT

SUPERSTRUCTURE DETAILS

HAZELET & ERDAL - CONSULTING ENGINEERS FILE NO. 753

APPROVED: [Signature] DATE: 7-2-54
 TRACED BY: RCG
 APPROVED: [Signature] DATE: 7-9-54
 CHECKED BY: USB
 ENGINEER OF BRIDGE DESIGN
 BRIDGE ENGINEER

SHEET 7 OF 57
 B57 OF 82-22-10



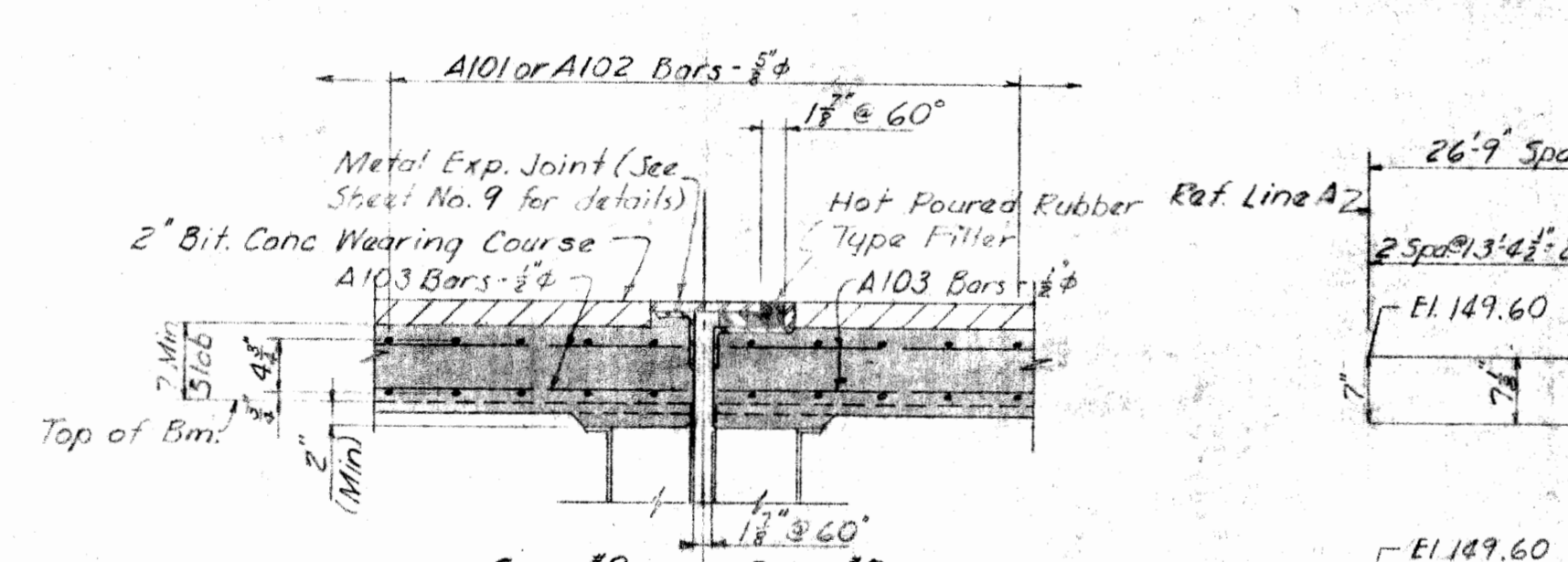
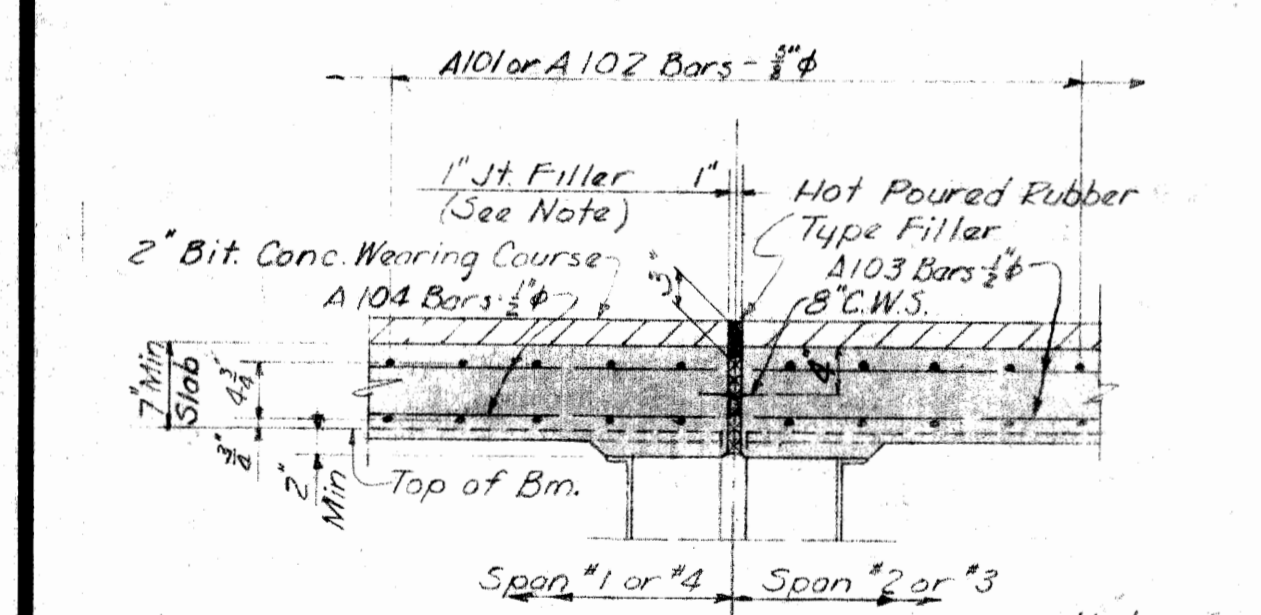
POUR DIAGRAM

Span #	Span Length	Ref. Line	Top of Slab @ Beam	Top of Slab @ Curb Lines	Top of Slab @ Const. Jts	Top of Slab @ C/R
Span #1	26'9"	Ref. Line #1	E1 149.60	E1 150.40	E1 151.22	E1 149.60
Span #2	54'9"	Ref. Line #1	E1 149.79	E1 150.61	E1 151.41	E1 149.81
Span #3	54'9"	Ref. Line #2	E1 150.59	E1 151.43	E1 152.25	E1 150.61
Span #4	26'9"	Ref. Line #3	E1 149.60	E1 150.40	E1 151.22	E1 149.60

GRADE A (6B) CONCRETE QUANTITIES

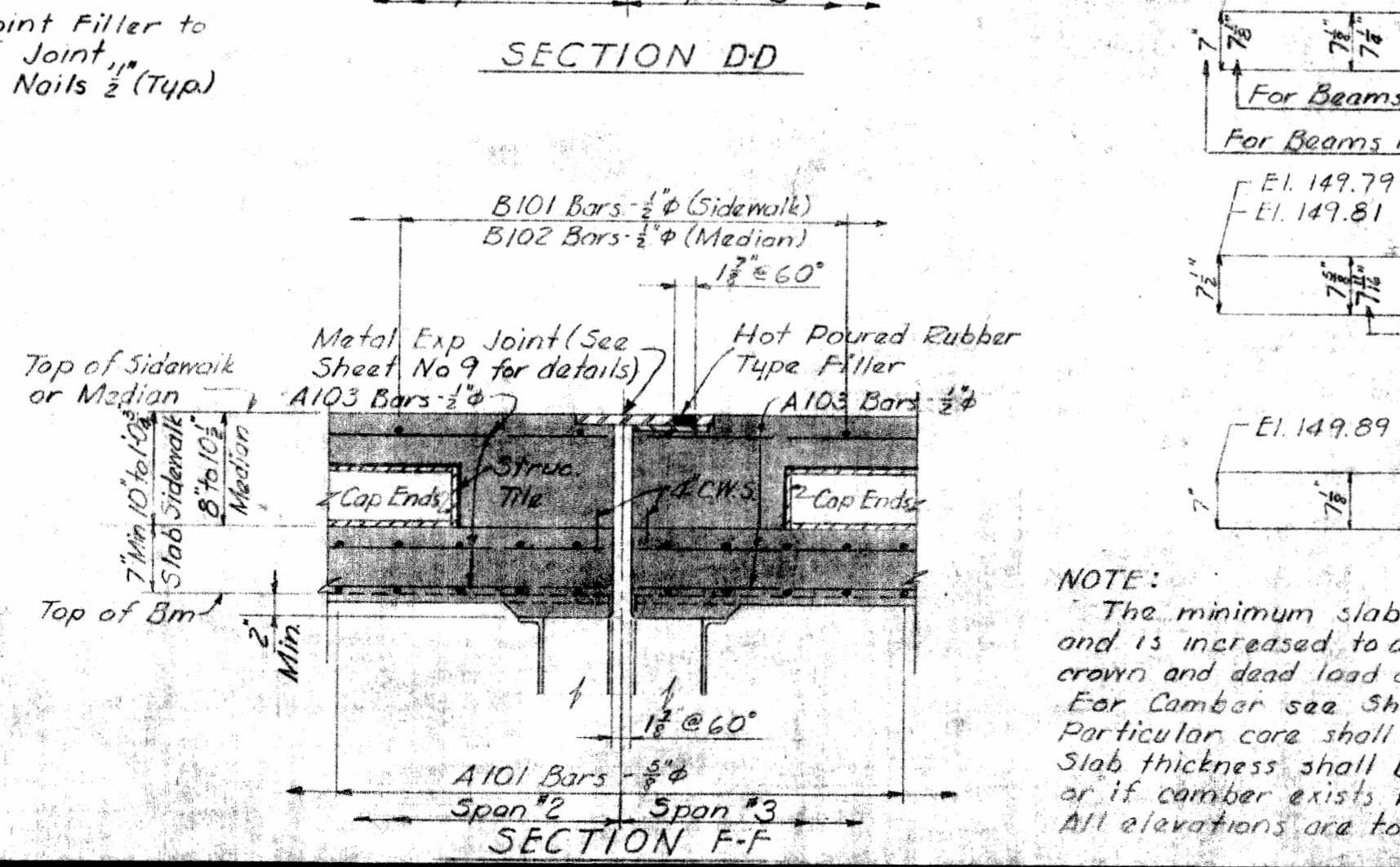
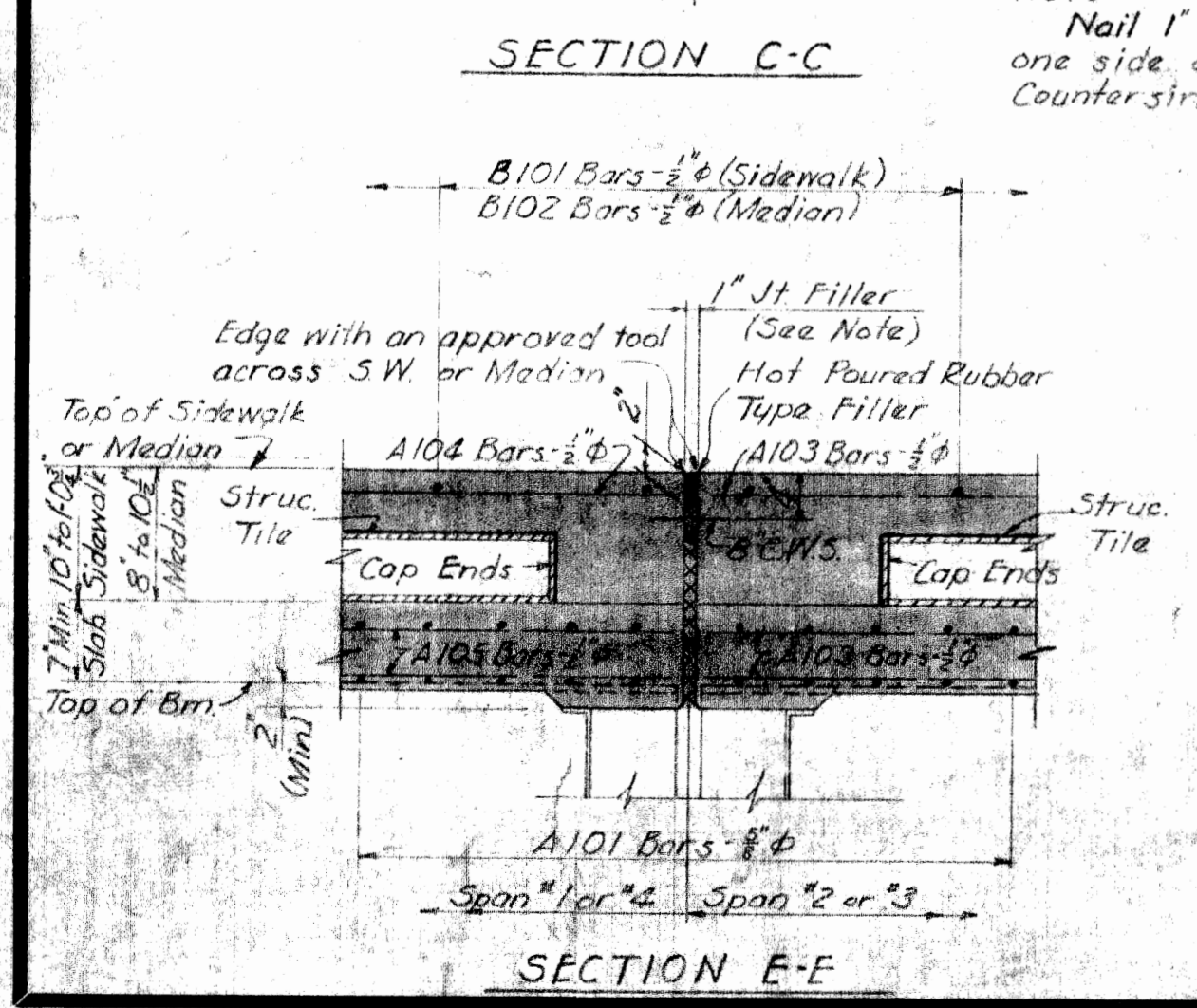
POUR	LOCATION	CU. YDS	POUR	LOCATION	CU. YDS	POUR	LOCATION	CU. YDS
A1	SLAB	17.2	E1	SLAB	17.2	J1	MEDIAN	5.1
A2	"	29.4	E2	"	29.4	J2	"	10.4
A3	"	29.4	E3	"	29.4	J3	"	10.4
A4	"	17.2	E4	"	17.2	J4	"	5.1
B1	"	17.2	F1	"	17.2	K1	"	5.1
B2	"	29.4	F2	"	29.4	K2	"	10.4
B3	"	29.4	F3	"	29.4	K3	"	10.4
B4	"	17.2	F4	"	17.2	K4	"	5.1
C1	"	14.9	G1	SIDEWALK	7.1	L1	CONDUIT ENC.	3.1
C2	"	25.6	G2	"	14.5	L2	"	6.4
C3	"	25.6	G3	"	14.5	L3	"	6.4
C4	"	14.9	G4	"	7.1	L4	"	3.1
D1	"	14.8	H1	"	7.1	M1	"	3.1
D2	"	25.6	H2	"	14.5	M2	"	6.4
D3	"	25.6	H3	"	14.5	M3	"	6.4
D4	"	14.8	H4	"	7.1	M4	"	3.1
Total Superstructure Concrete - Grade A (6B)		721.6	Cu. Yds.					

The above four designations do not denote the pour sequence.



MISCELLANEOUS QUANTITIES

ITEMS	UNIT	AMOUNT
BRIDGE RAILING	LIN. FT.	528
RUBBED SURFACE FINISH	SQ. FT.	7858
12"x12"x8" STRUCTURAL TILE	EACH	608
12"x12"x6" STRUCTURAL TILE	EACH	1,824
12"x12"x4" STRUCTURAL TILE	EACH	2,432
1" JOINT FILLER	SQ. FT.	322
HOTPOURED RUBBER TYPE FILLER	LIN. FT.	566
COPPER	LBS.	573
2" BIT CONCRETE WEARING COURSE	TONS	175
BOND COAT AE-2	GALS.	440
3" FIBRE CONDUIT	LIN. FT.	110
4" FIBRE CONDUIT	LIN. FT.	3888
1/4" JOINT FILLER	SQ. FT.	1268
12" PIPE SLEEVES-INSTALL	EACH	2



QUANTITIES CHARGEABLE TO MICH. CONS. GAS CO.

ITEMS	UNIT	AMOUNT
STRUCTURAL STEEL	LBS.	200
12" PIPE SLEEVES-PLACED	EACH	2

Work this sheet with Sheets No. 7 & No. 9

NOTE:
 The minimum slab thickness is 7" and is increased to allow for transverse crown and dead load deflection. For Camber see Sheet No. 10. Particular care shall be taken in determining header elevations. Slab thickness shall be adjusted as required if actual camber varies or if camber exists where no camber is specified. All elevations are to top of concrete slab.

MICHIGAN STATE HIGHWAY DEPARTMENT
 CHARLES M. ZIEGLER
 STATE HIGHWAY COMMISSIONER
 E GRAND BLVD. CROSSING THE EDSEL FORD EXPRESSWAY IN THE CITY OF DETROIT

SUPERSTRUCTURE DETAILS

HAZELT & ERDAL - CONSULTING ENGINEERS FILE NO. 753

APPROVED: [Signature] 7/6/54
 BRIDGE DRAFTSMAN

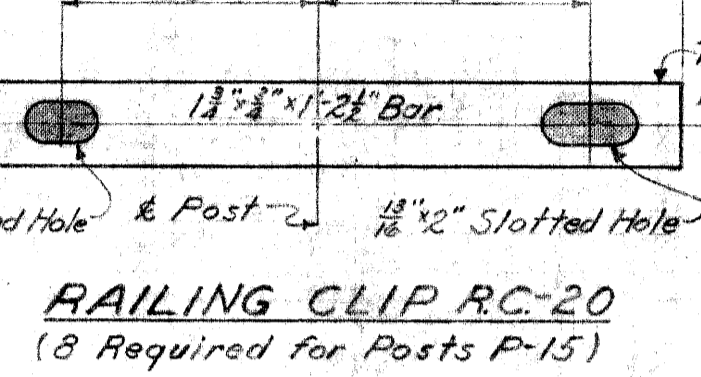
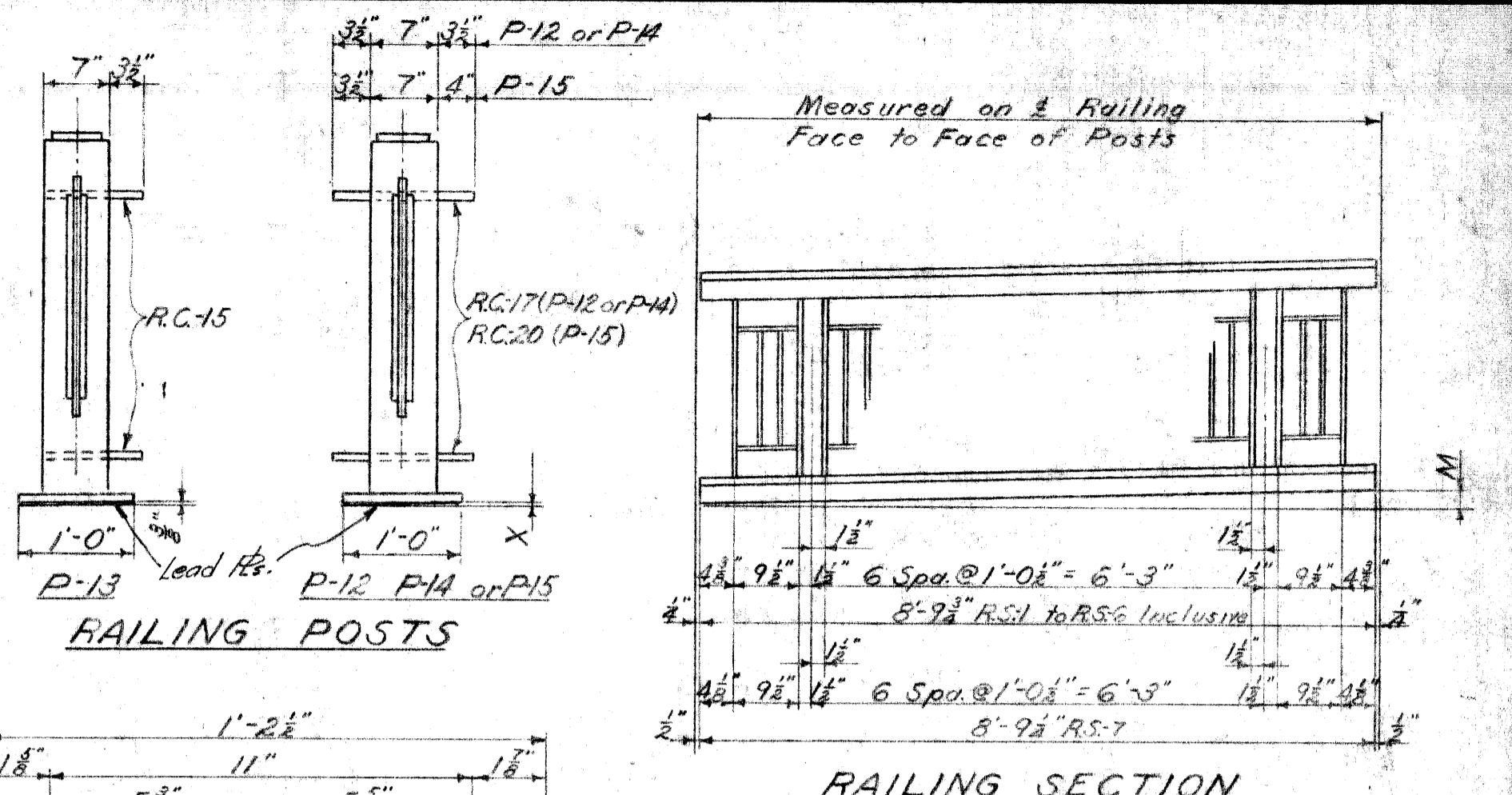
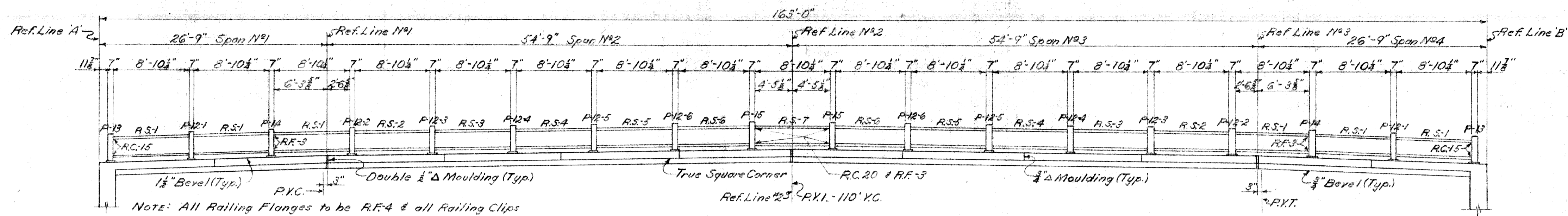
APPROVED: [Signature] 7-9-54
 ENGINEER OF BRIDGE DESIGN

APPROVED: [Signature]
 BRIDGE ENGINEER

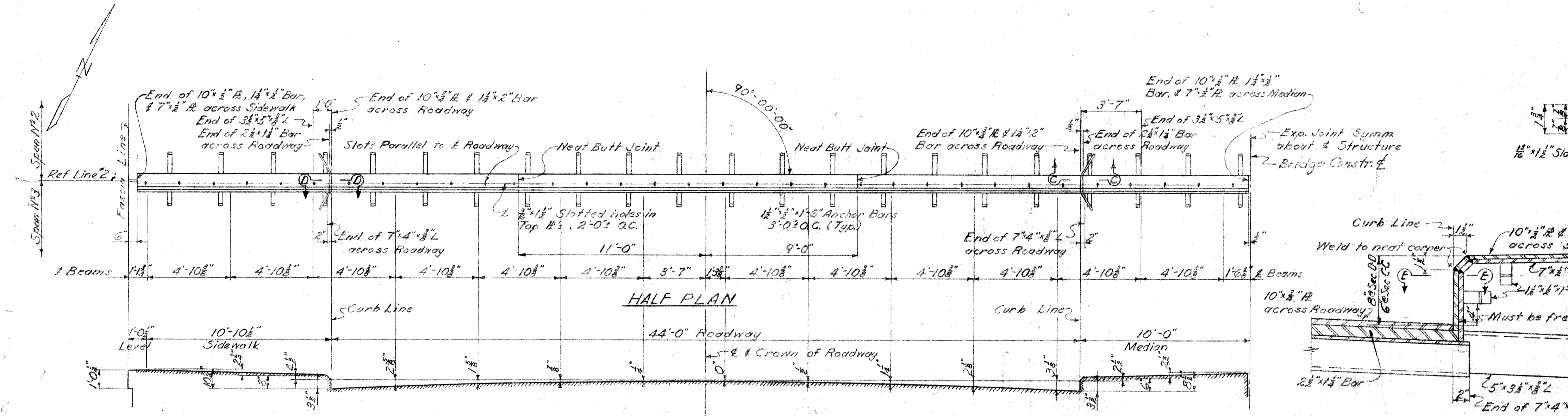
REVISIONS

NO.	DESCRIPTION	DATE	BY
1	Rev. Wt. Sl. Steel Chargeable to M.C.G.C.	2/2/55	ERD

SHAD ROSS 2/2/55
 DRAWN BY 2/2/55
 CHECKED BY CSB 9-25
 SHEET 27 of 37
 B57 of 82-22-10

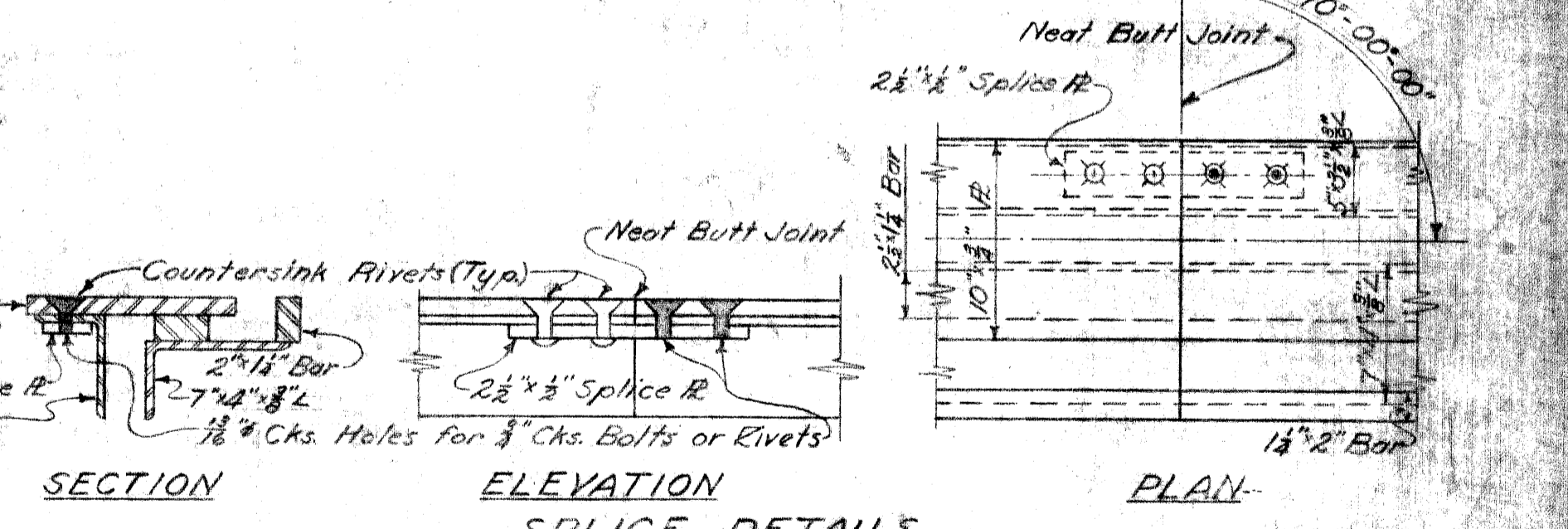
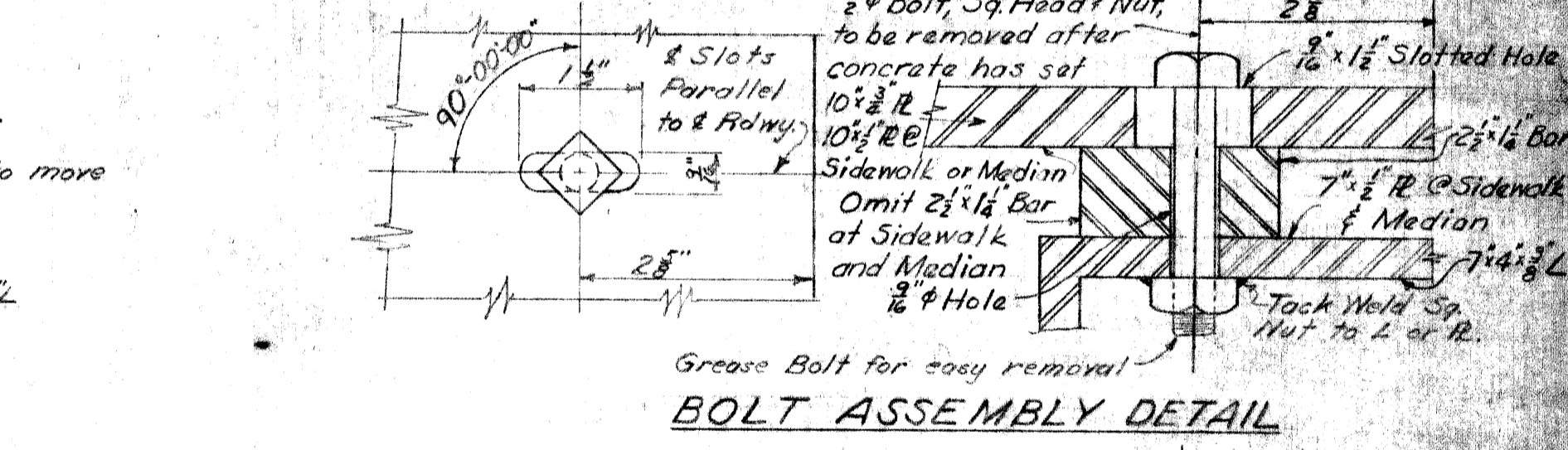
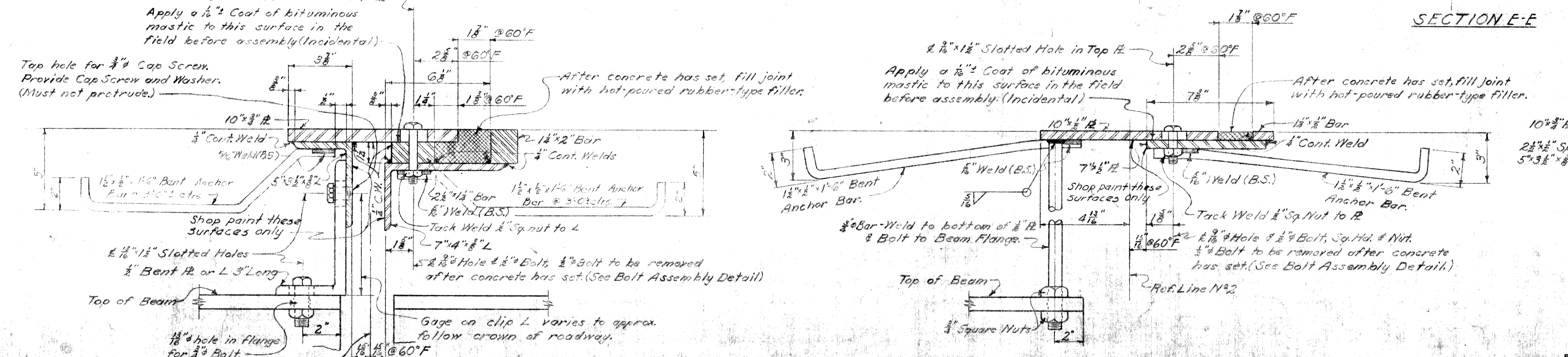
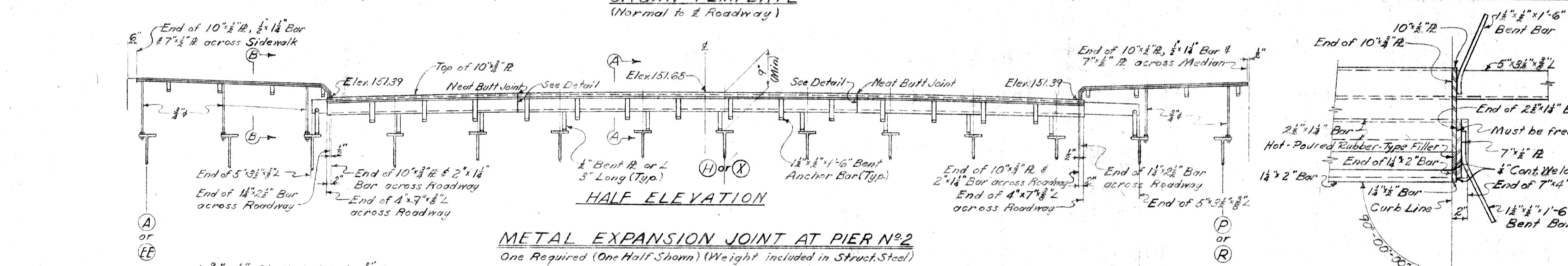


NOTES:
For Railing Details not shown hereon, see M.S.H.D. standard drawing R-4. For Railing Posts, Flanges & Clip details not shown, see M.S.H.D. standard drawing R-5. Posts P-15 are the same as Post P-M except RC-20 clips are used on P-15.



MARK	N ^O	QTY	DESCRIPTION	MARK	N ^O	QTY	DESCRIPTION
RS-1	12	3 1/2	RAILING SECTION	P-12-1	4	1/2	RAILING POST
RS-2	4	2 1/2	"	P-12-2	4	1/2	"
RS-3	4	2 1/2	"	P-12-3	4	1/2	"
RS-4	4	1 1/2	"	P-12-4	4	1/2	"
RS-5	4	1 1/2	"	P-12-5	4	1/2	"
RS-6	4	1 1/2	"	P-12-6	4	1/2	"
RS-7	2	0	"	P-12-7	4	1/2	"
RC-15	8		RAILING CLIP	P-15	4	0	"
RC-17	56		"	BOLTS	136		3/4" x 2 1/2" Hex. Hd. Bolts
RC-20	8		"	WASHERS	136		3/4" Lockwashers
RF-3	16		RAILING FLANGE	PLATES	36		4" Lead Plates
RF-4	120		"	ANCHOR BOLTS	144		3/4" x 10" Bolt, Sq. Hd. Hex. Nut, 2" Projection

Approximate Total Railing Weight: 20,700#



MICHIGAN STATE HIGHWAY DEPARTMENT
 CHARLES M. ZIEGLER
 STATE HIGHWAY COMMISSIONER
 E. GRAND BLVD. CROSSING THE EDEL FORD EXPRESSWAY IN THE CITY OF DETROIT
METAL FLOOR JOINT & RAILING DETAILS
 HAZLET & ERDAL - CONSULTING ENGINEERS FILE NO. 755

APPROVED: [Signature] 7/1/54
 BRIDGE DRAFTSMAN
 APPROVED: [Signature] 7-9-54
 ENGINEER OF BRIDGE DESIGN
 APPROVED: [Signature]
 BRIDGE ENGINEER

SHEET 5 OF 5
 B57 OF 82-22-10

NO.	DESCRIPTION	DATE	BY