

MISCELLANEOUS STRUCTURE QUANTITIES

ITEMS	UN. IT.	AMOUNT
GRAVELLED FLAGSTONE PAVING	SG. YDS.	170
SAND-GRAVEL BACKFILL (L.M.)	CU. YDS.	118
6" SEWER	LIN. FT.	100

MICHIGAN STATE HIGHWAY DEPARTMENT
 CHARLES M. ZIEGLER
 STATE HIGHWAY COMMISSIONER
 CHENE ST CROSSING THE EBSEL FORD EXPRESSWAY IN THE CITY OF DETROIT

GENERAL PLAN OF STRUCTURE

HAZLET & ERDAL - CONSULTING ENGINEERS FILE NO. 750

APPROVED: *[Signature]* CHIEF BRIDGE DRAFTSMAN
 APPROVED: *[Signature]* ENGINEER OF BRIDGE DESIGN

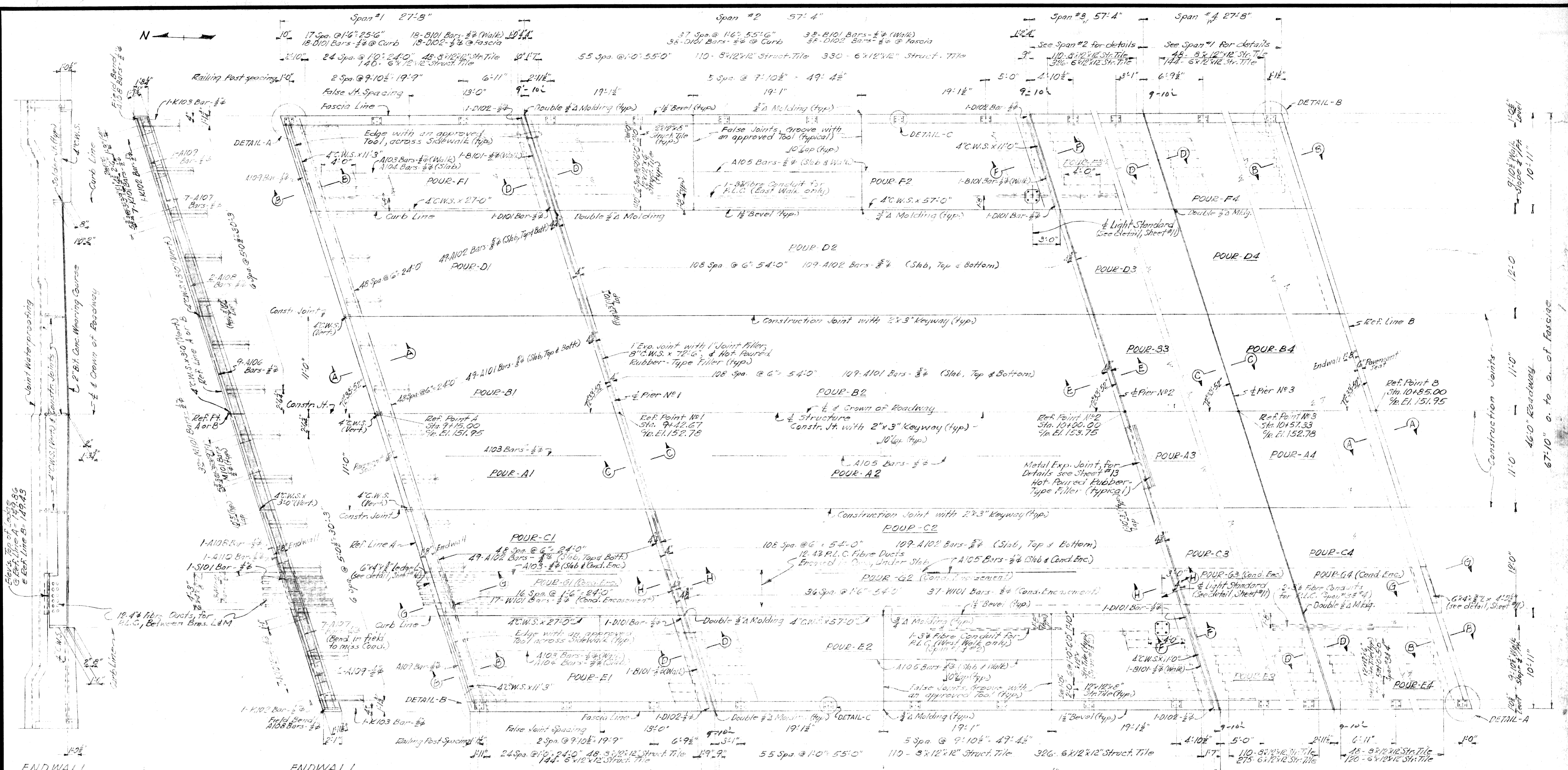
REVISIONS:

NO.	DESCRIPTION	DATE	BY

DATE: 10-13-54
 DRAWN BY: J.M.C. 6-77-53
 CHECKED BY: J.M.C. 6-25-54
 SHEET 3 OF 13

B56 of 82-22-10

NOTE: Proposed pavements, curb and gutter, and sand sub-base on the Expressway are not part of this contract.



ENDWALL ELEVATION

ENDWALL SECTIONAL PLAN

PLAN

GRADE A (GB) CONCRETE QUANTITIES			MISCELLANEOUS QUANTITIES		
POUR	LOCATION	CU.YDS.	POUR	LOCATION	CU.YDS.
A1	SLAB	8.6	D3	SLAB	18.4
A2	"	15.3	D4	SLAB	18.4
A3	"	15.3	E1	SIDEWALK	6.5
A4	"	8.6	E2	"	13.1
B1	"	8.6	F3	"	13.9
B2	"	15.3	E4	"	6.9
B3	"	15.3	F1	"	6.6
B4	"	8.6	F2	"	13.0
C1	"	18.0	F3	"	13.1
C2	"	31.6	F4	SIDEWALK	6.5
C3	"	31.6	G1	COND. ENCLOSUREMENT	3.3
C4	"	18.0	G2	"	6.8
D1	"	18.4	G3	"	6.8
D2	SLAB	31.6	G4	COND. ENCLOSUREMENT	3.3

Total Grade A (GB) Concrete - Superstructure = 394.6 CU.YDS.

GENERAL NOTES -
 For Bevel, Molding, Bar Chair, & Railing details see M.S.A.D. std. drawing R-4, & for Railing Post details see E-5.
 C.W.S. indicates Copper Waterstop, J.W.P. indicates Joint Waterproofing.
 P.L.C. indicates Public Lighting Commission.
 Procedure for placing Hot-Poured Rubber-Type Filler in Roadway Joints:-
 Step 1 - Seal the joint in concrete slab only.
 Step 2 - Place the Bituminous Conc. Wearing Course over the joint and complete the placing of the Hot-Poured Rubber-Type Filler to the top of the roadway surface.
 For Sections A-A thru H-H inclusive, also details A, B, & C see Sheet #11. For Railing Details & Slab Thickness Diagram see Sheet #12. For Metal Exp. Jt. Details see Sheet #13.

This sheet to be worked with Sheet Nos 11, 12, & 13

MICHIGAN STATE HIGHWAY DEPARTMENT
 CHARLES M. ZIEGLER
 STATE HIGHWAY COMMISSIONER
 CHENE ST. CROSSING THE EDSEL FORD EXPRESSWAY IN THE CITY OF DETROIT.

SUPERSTRUCTURE DETAILS

HAZLET & EDAL - CONSULTING ENGINEERS FILE #756

APPROVED: [Signature] 1/29/54
 CHIEF BRIDGE DRAFTSMAN

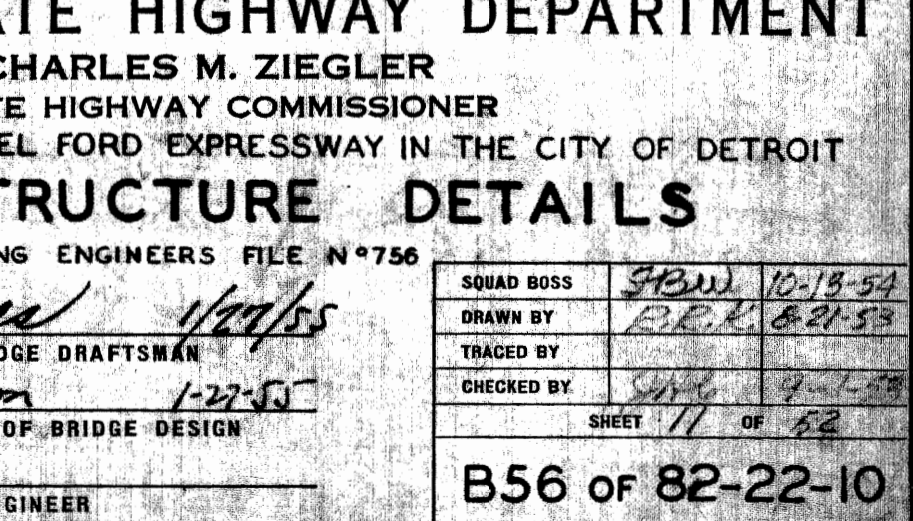
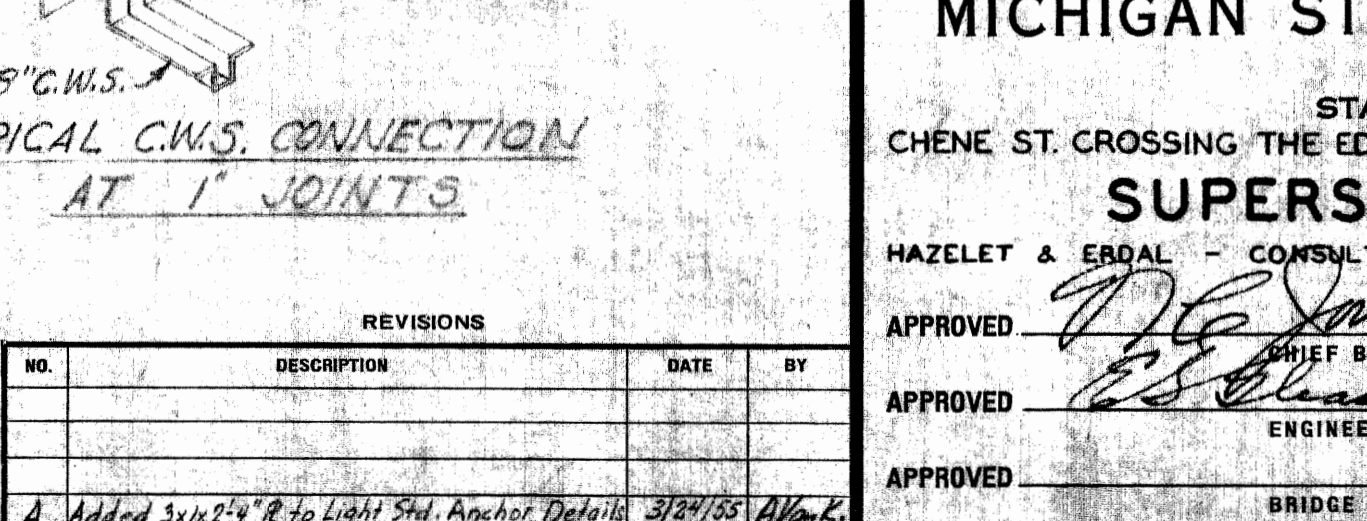
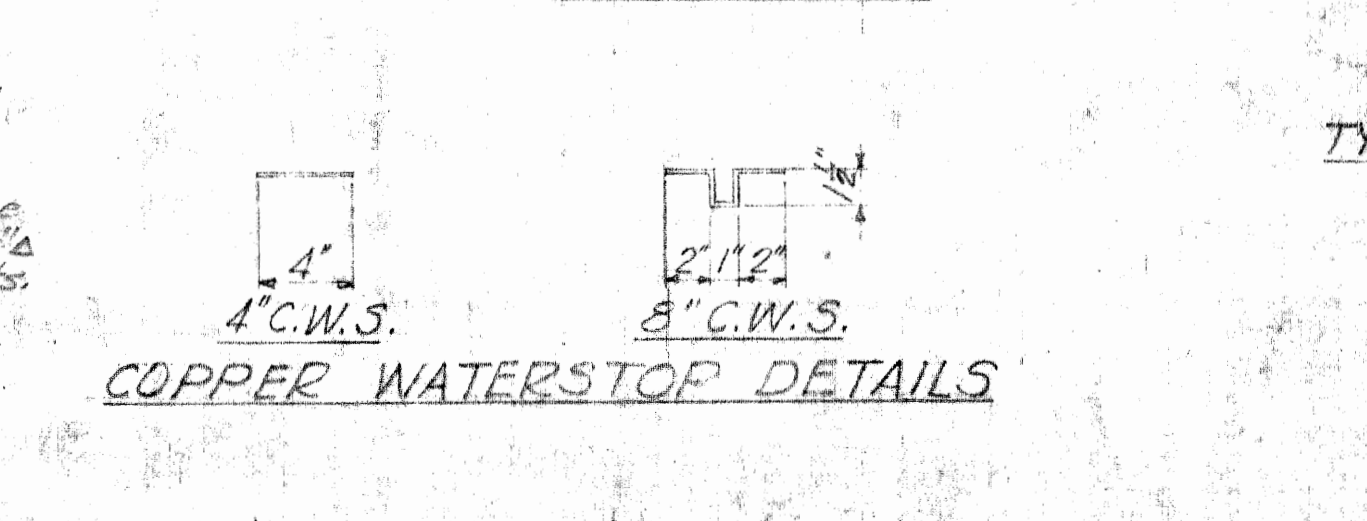
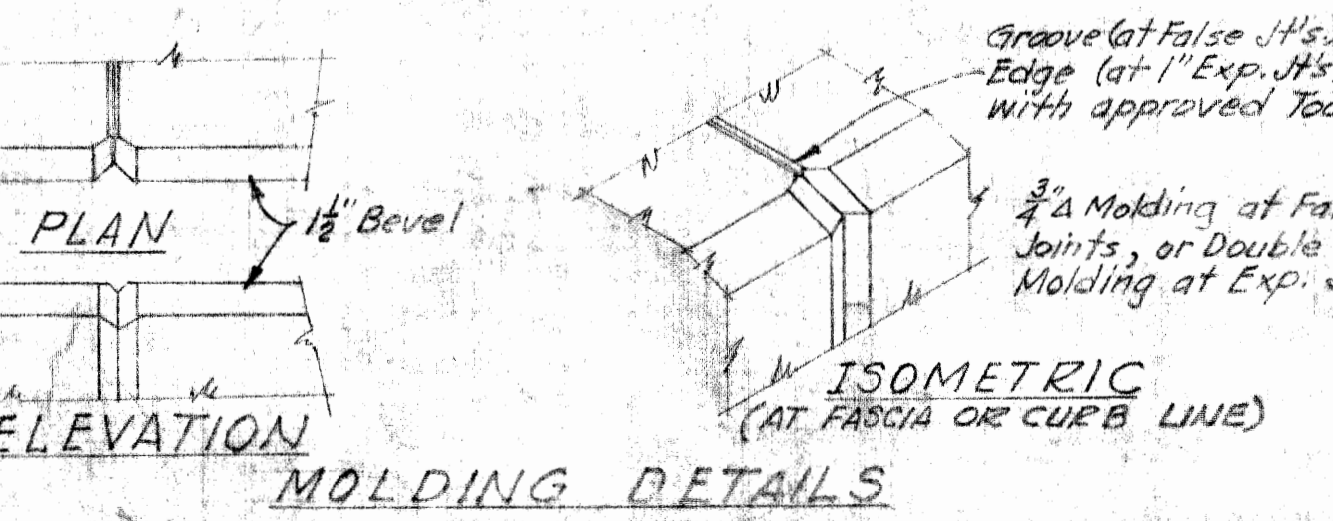
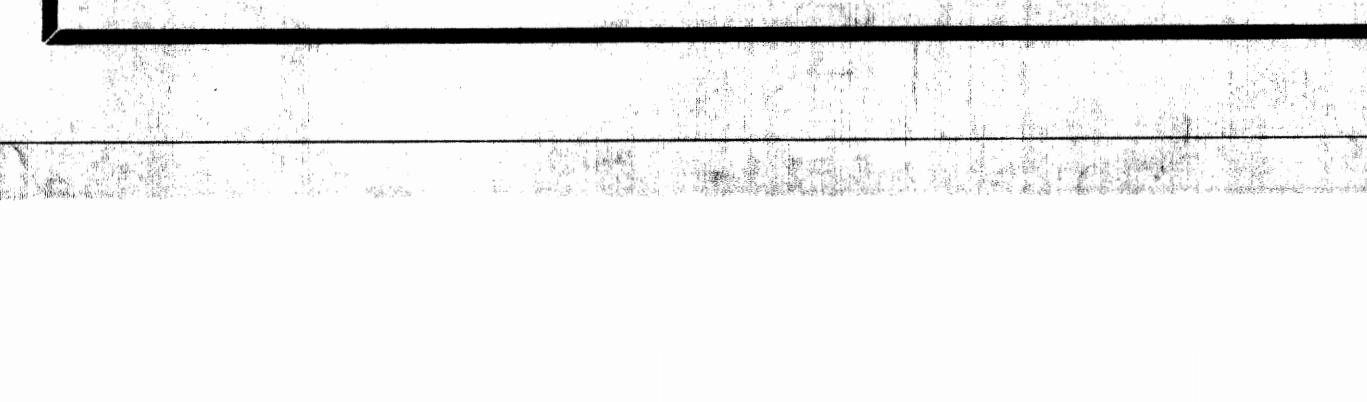
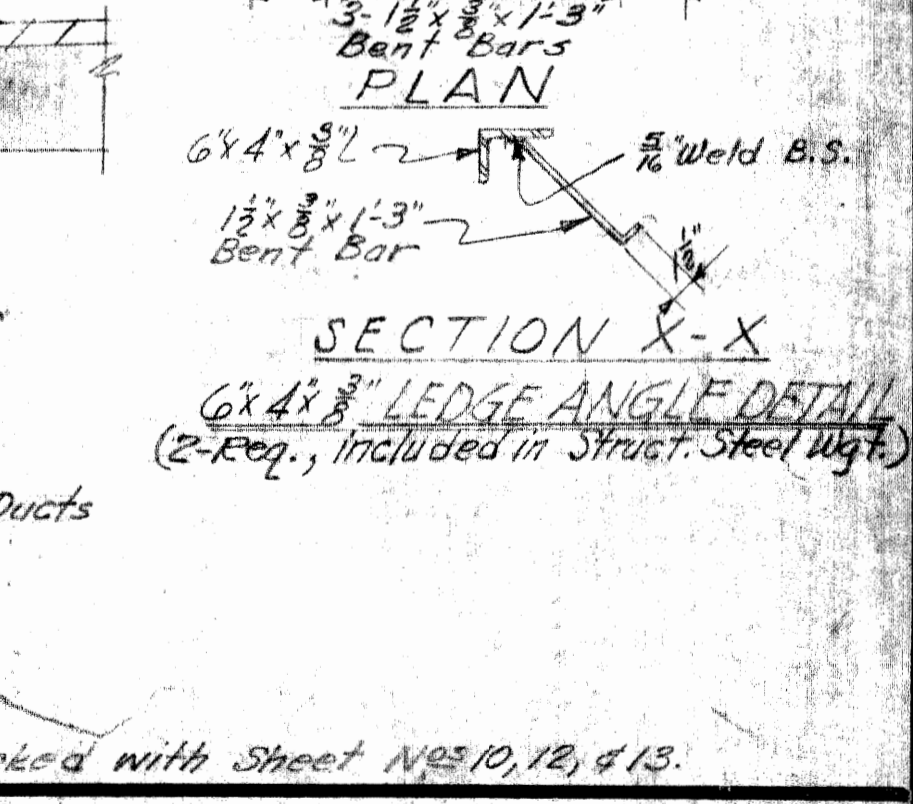
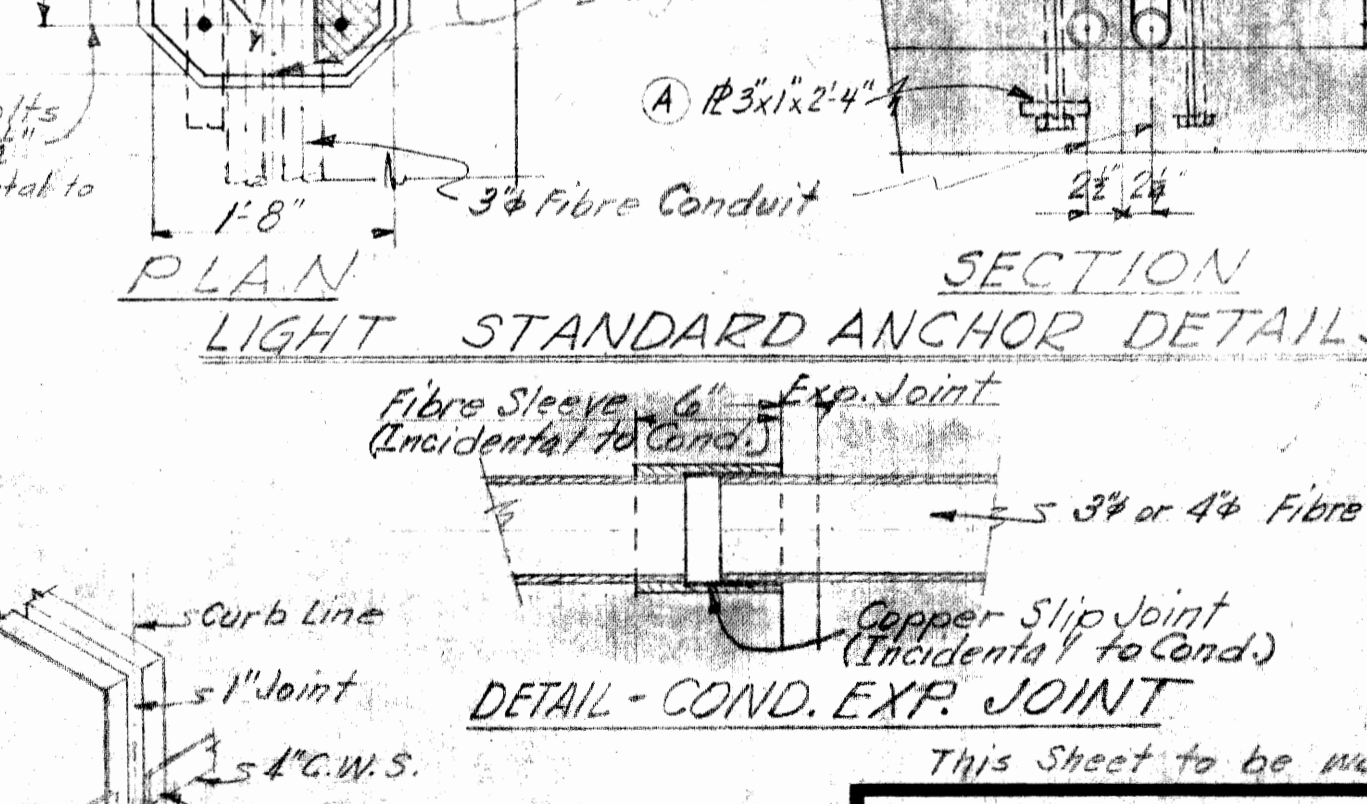
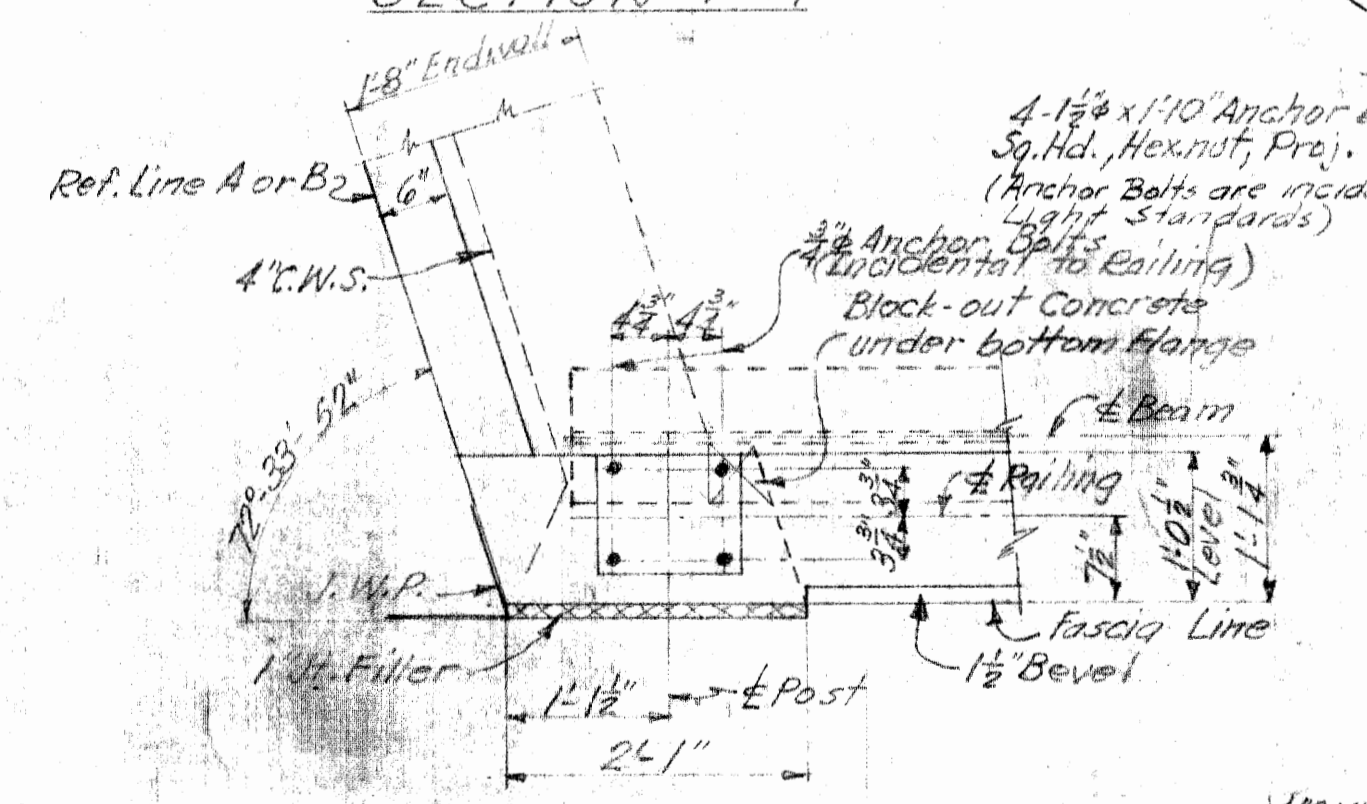
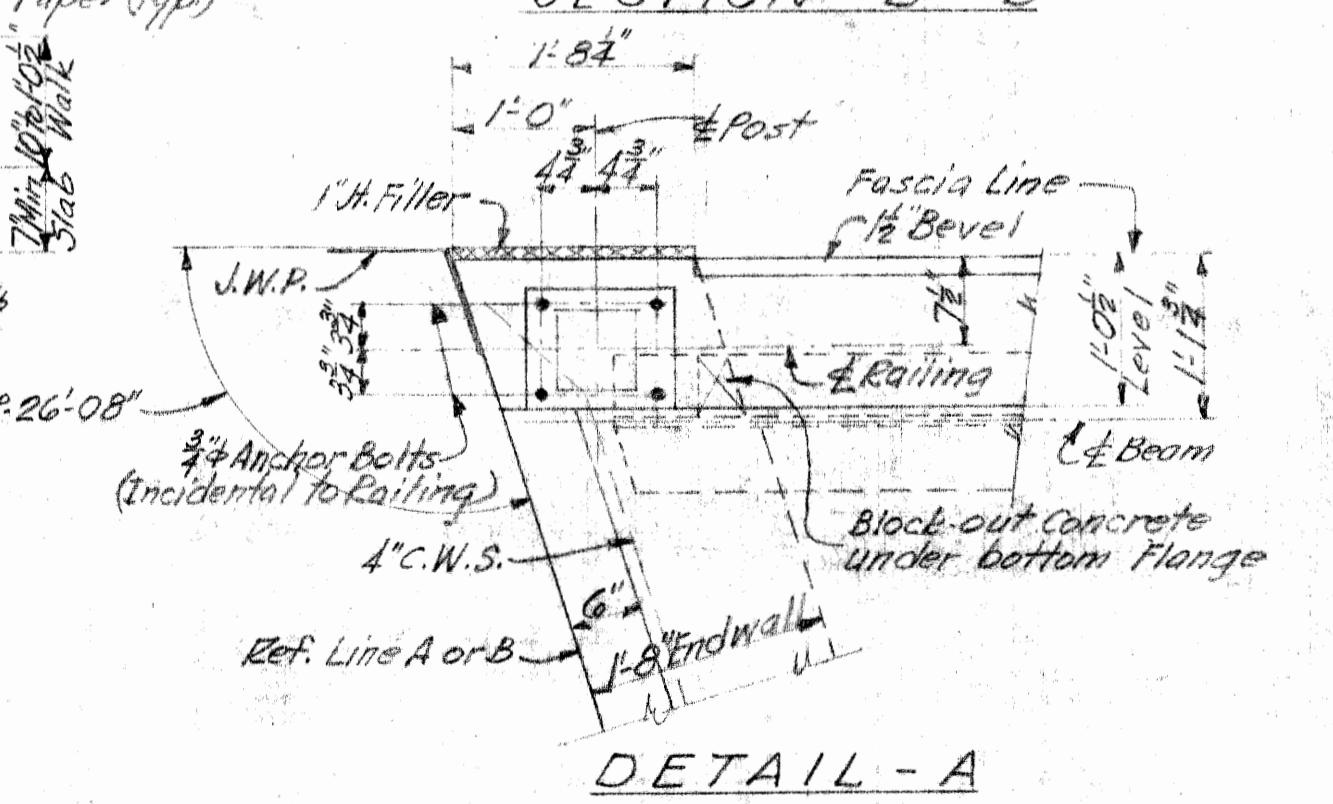
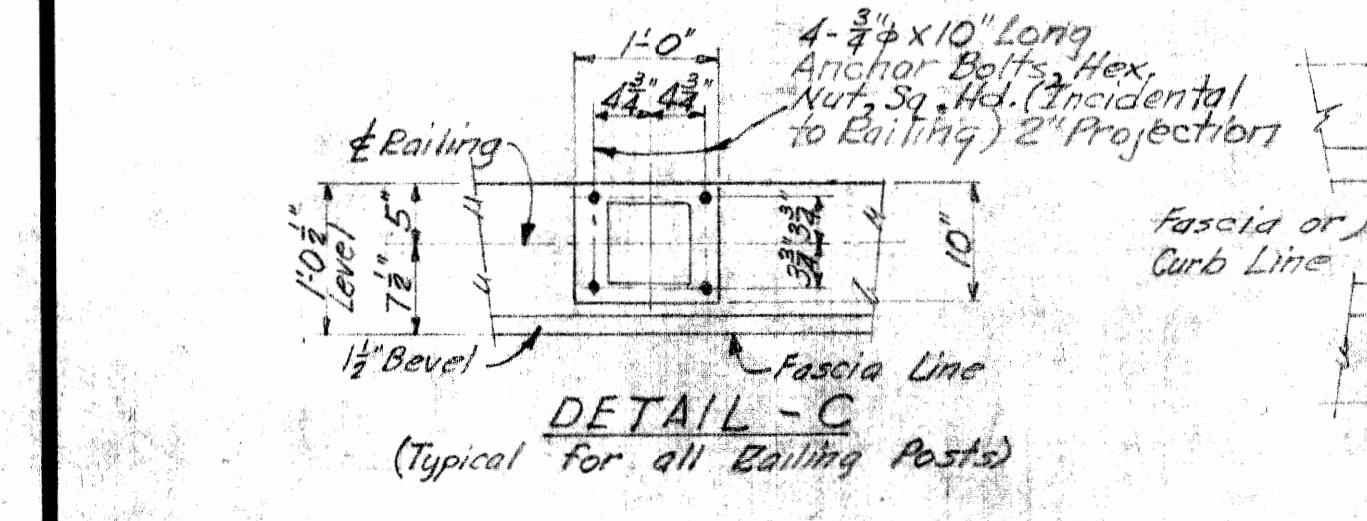
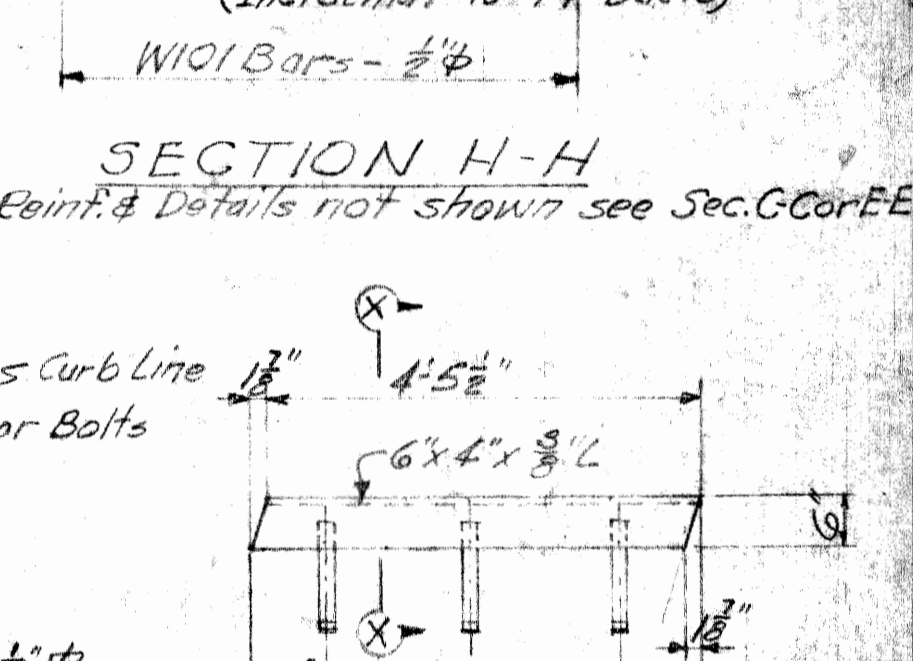
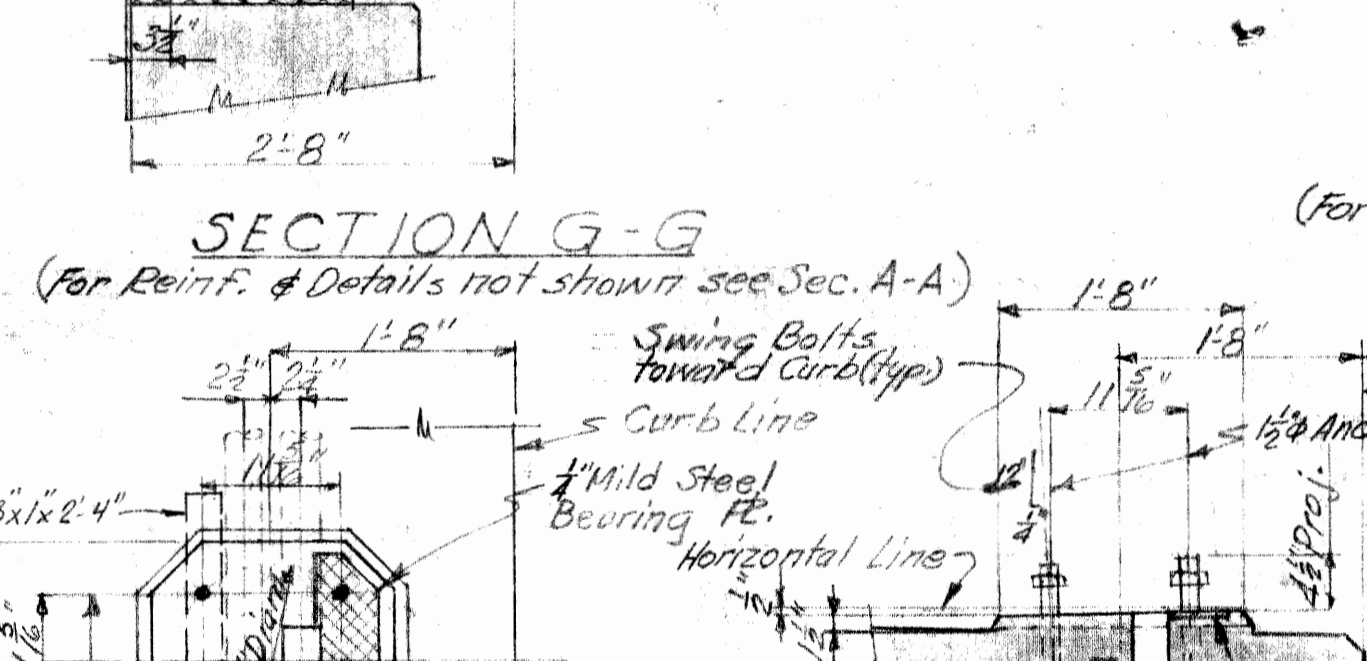
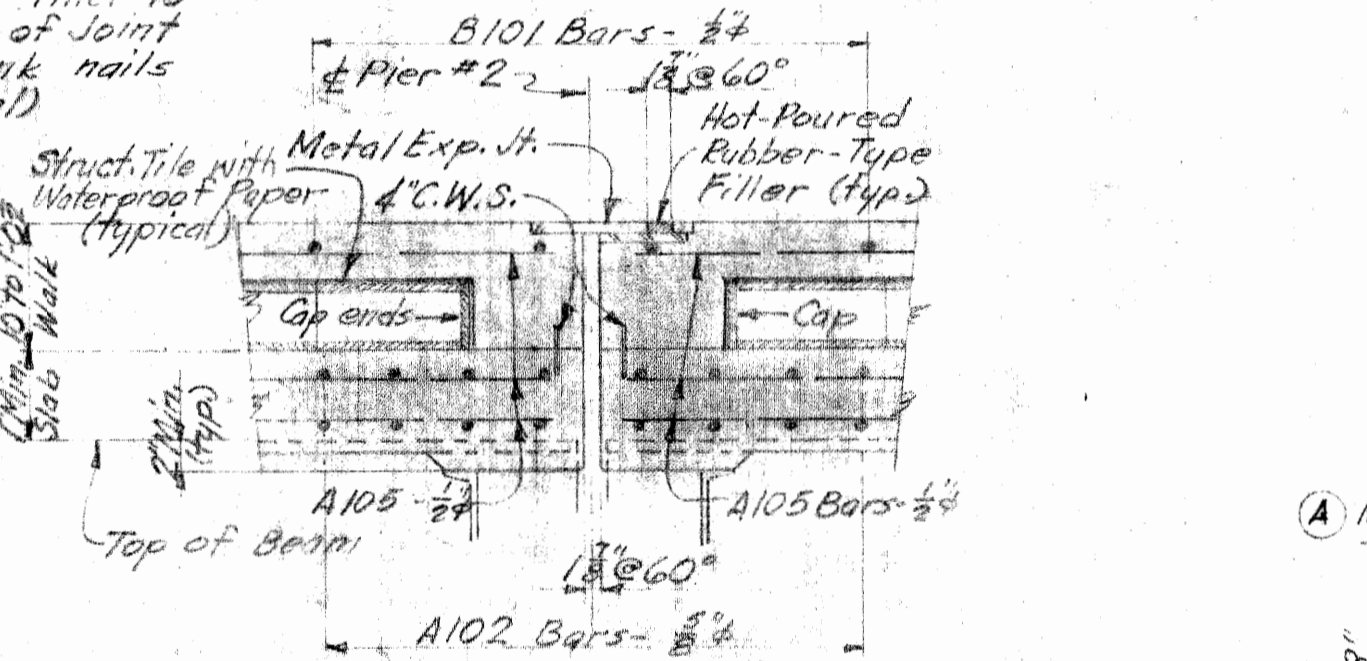
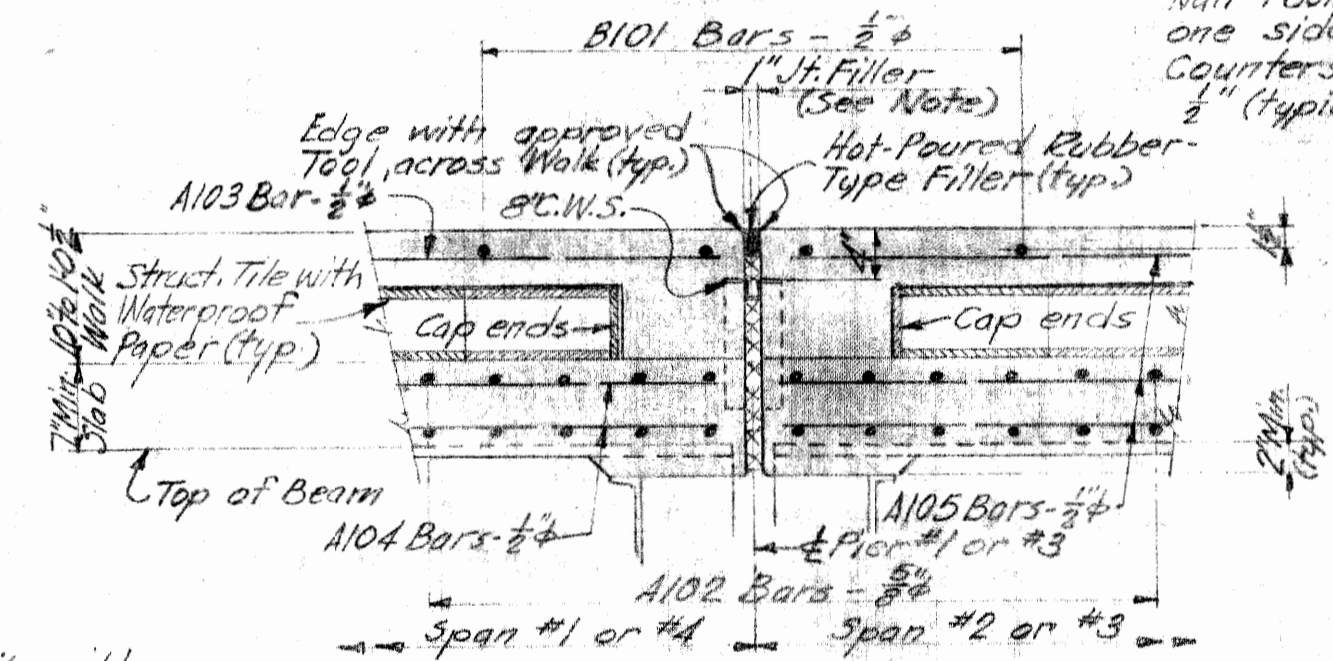
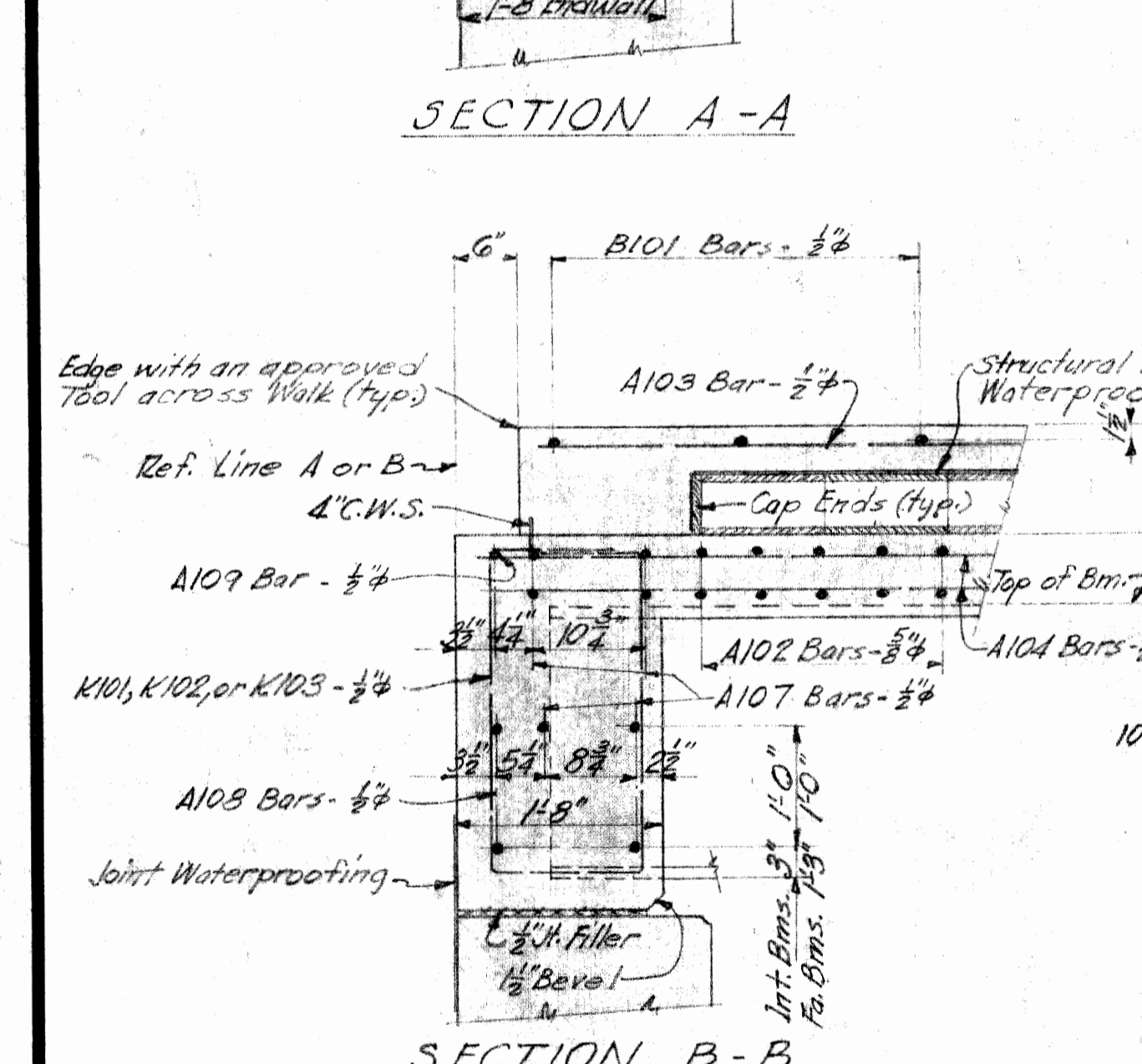
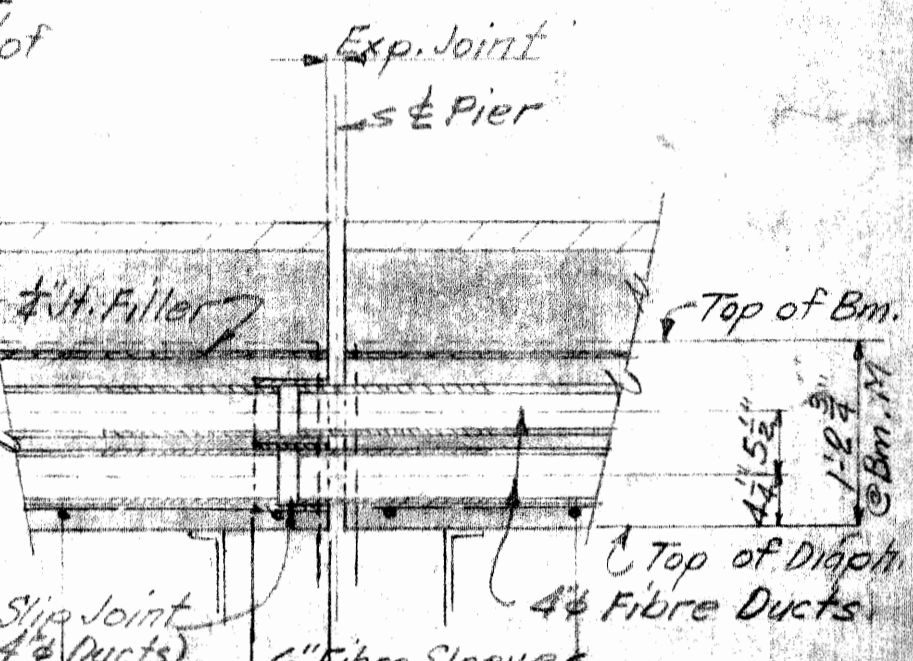
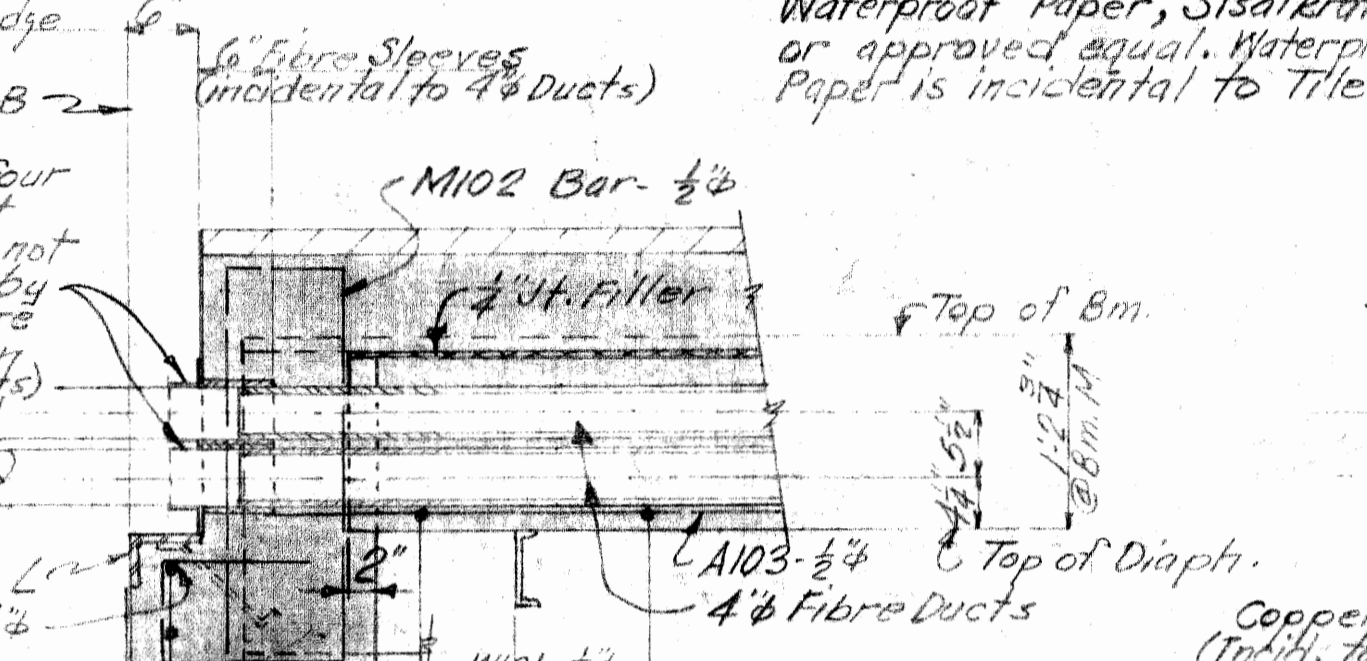
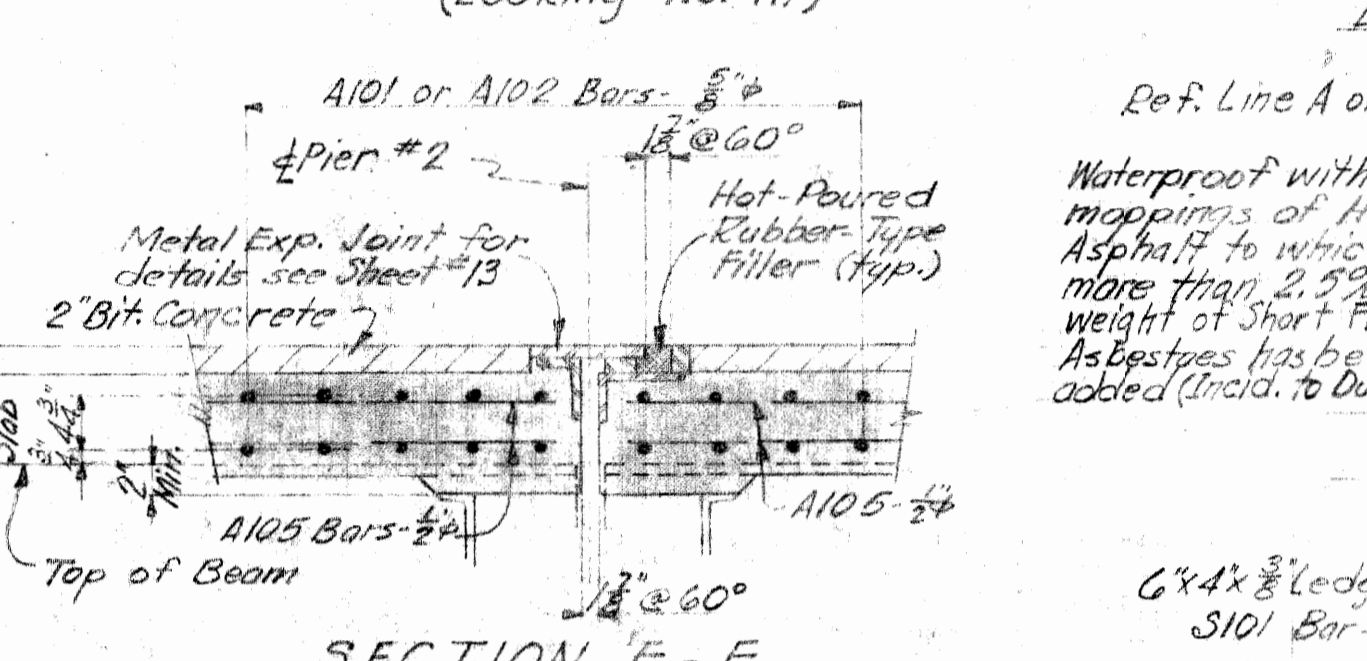
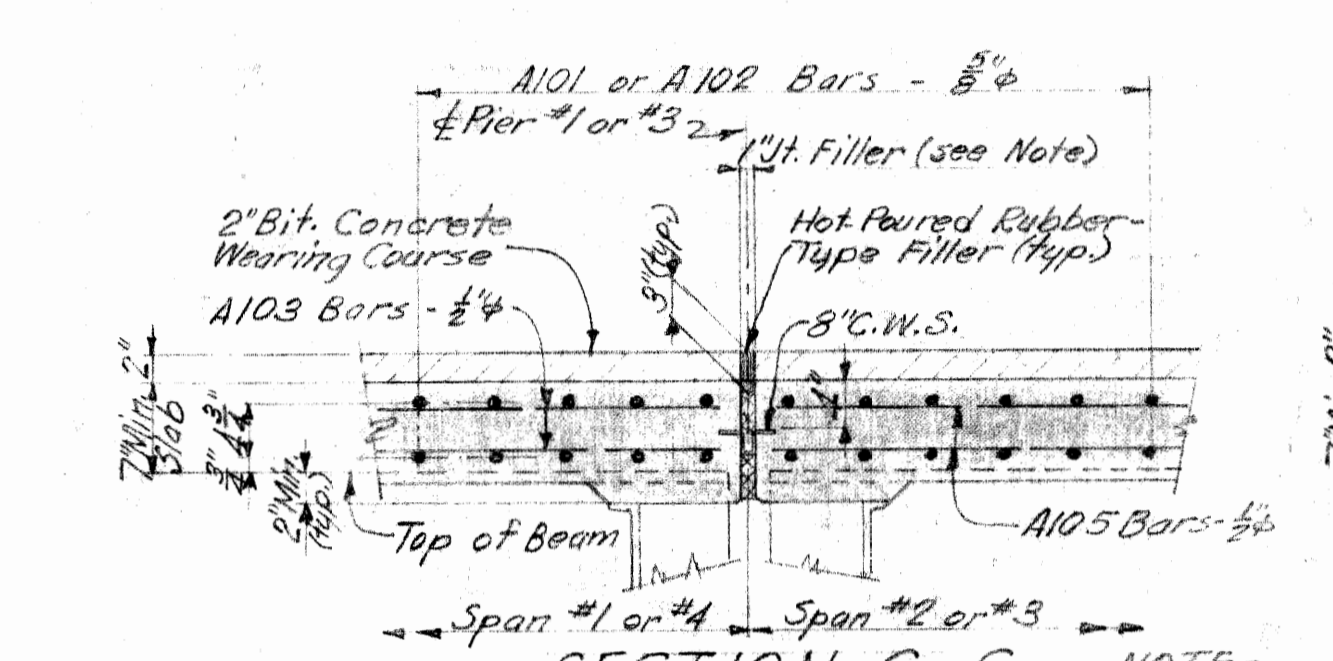
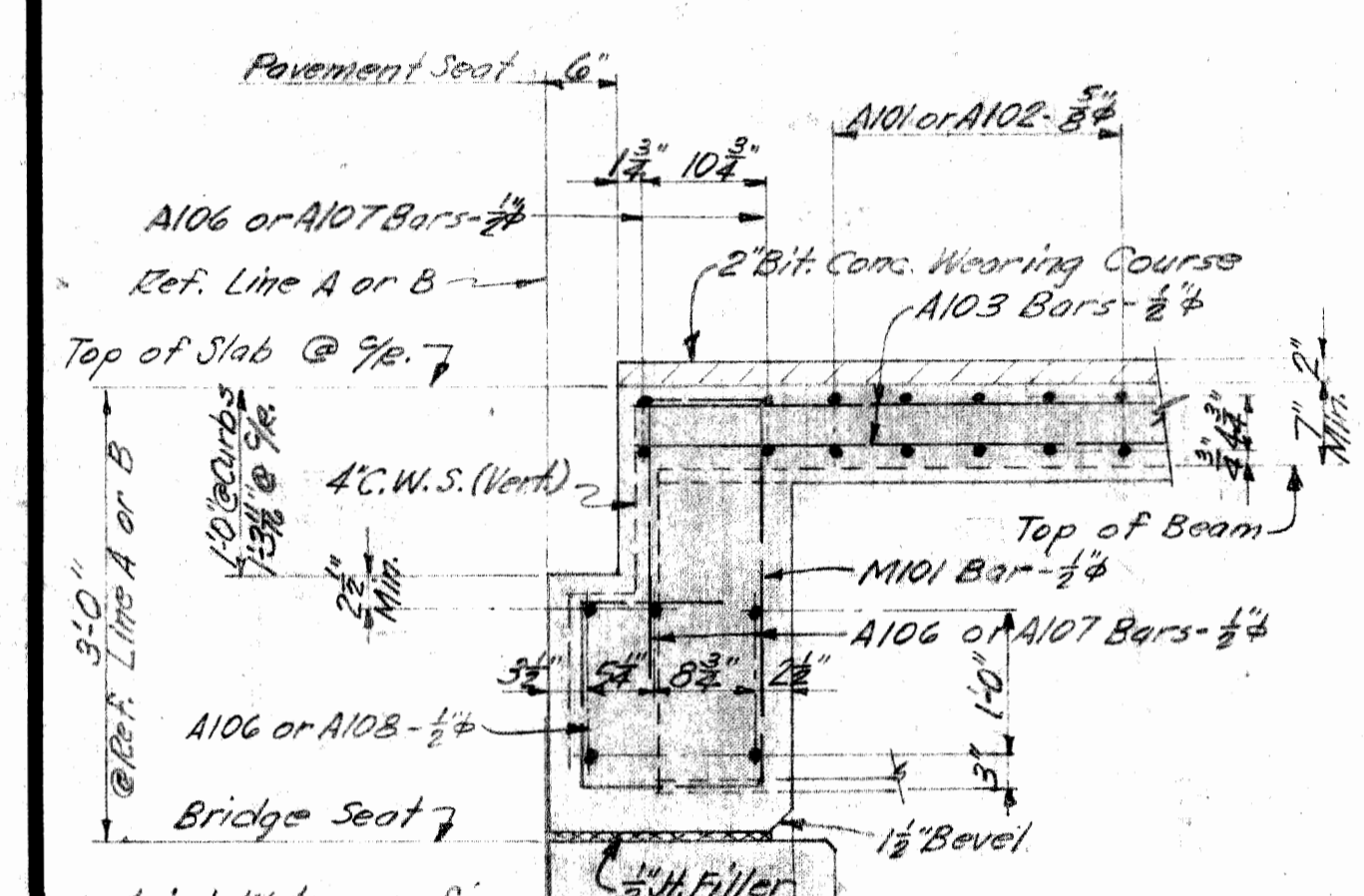
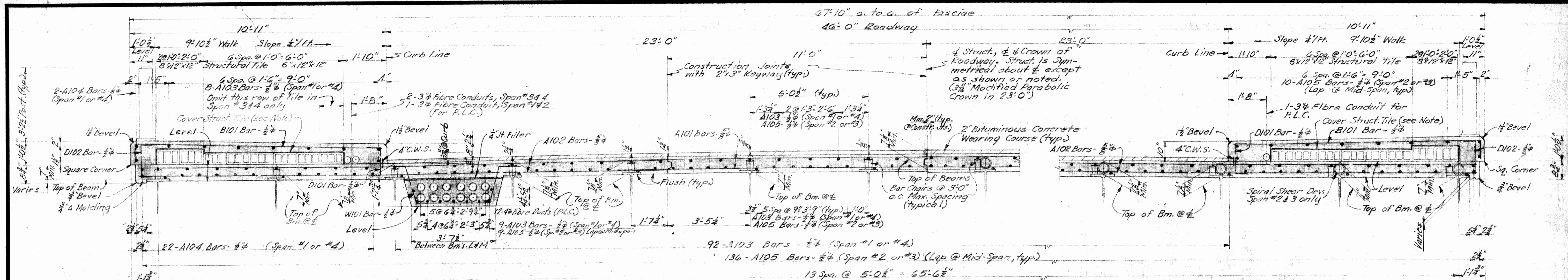
APPROVED: [Signature] 1-27-54
 ENGINEER OF BRIDGE DESIGN

APPROVED: _____
 BRIDGE ENGINEER

NO.	DESCRIPTION	DATE	BY

SQUAD BOSS	[Signature]	10-18-54
DRAWN BY	[Signature]	8-20-53
CHECKED BY	[Signature]	7-1-53
DATE		

SHEET 10 OF 12
 B 56 of 82-22-10



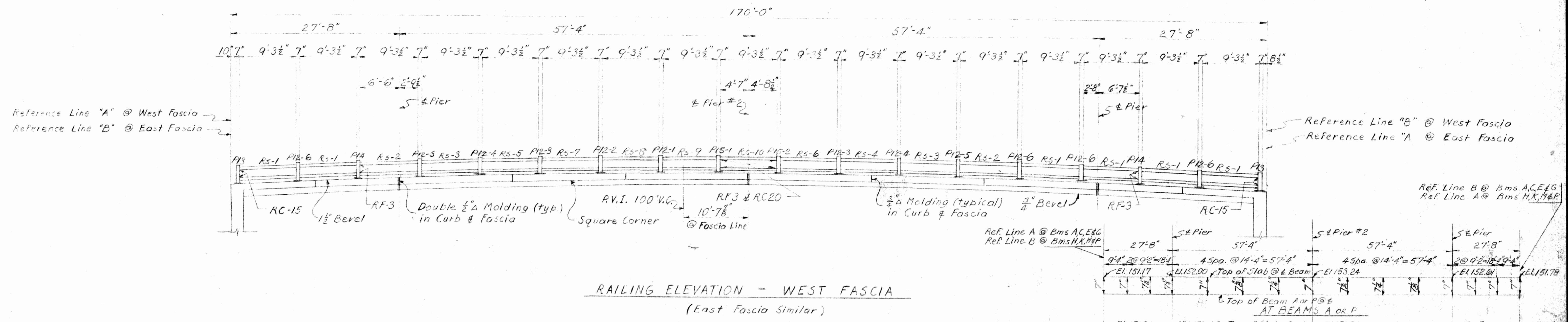
NOTE - Cover structural tile with Waterproof Paper, Sisal mat, or approved equal. Waterproof Paper is incidental to Tile.

This Sheet to be worked with Sheet Nos 10, 12, & 13.

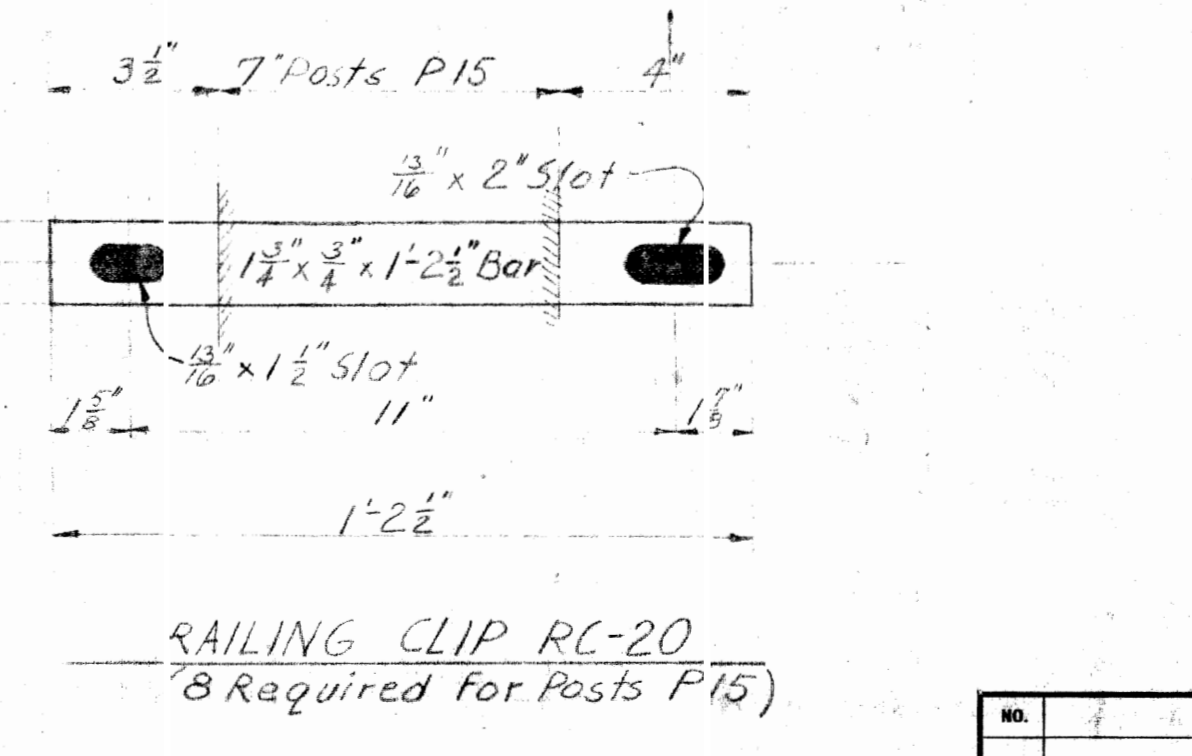
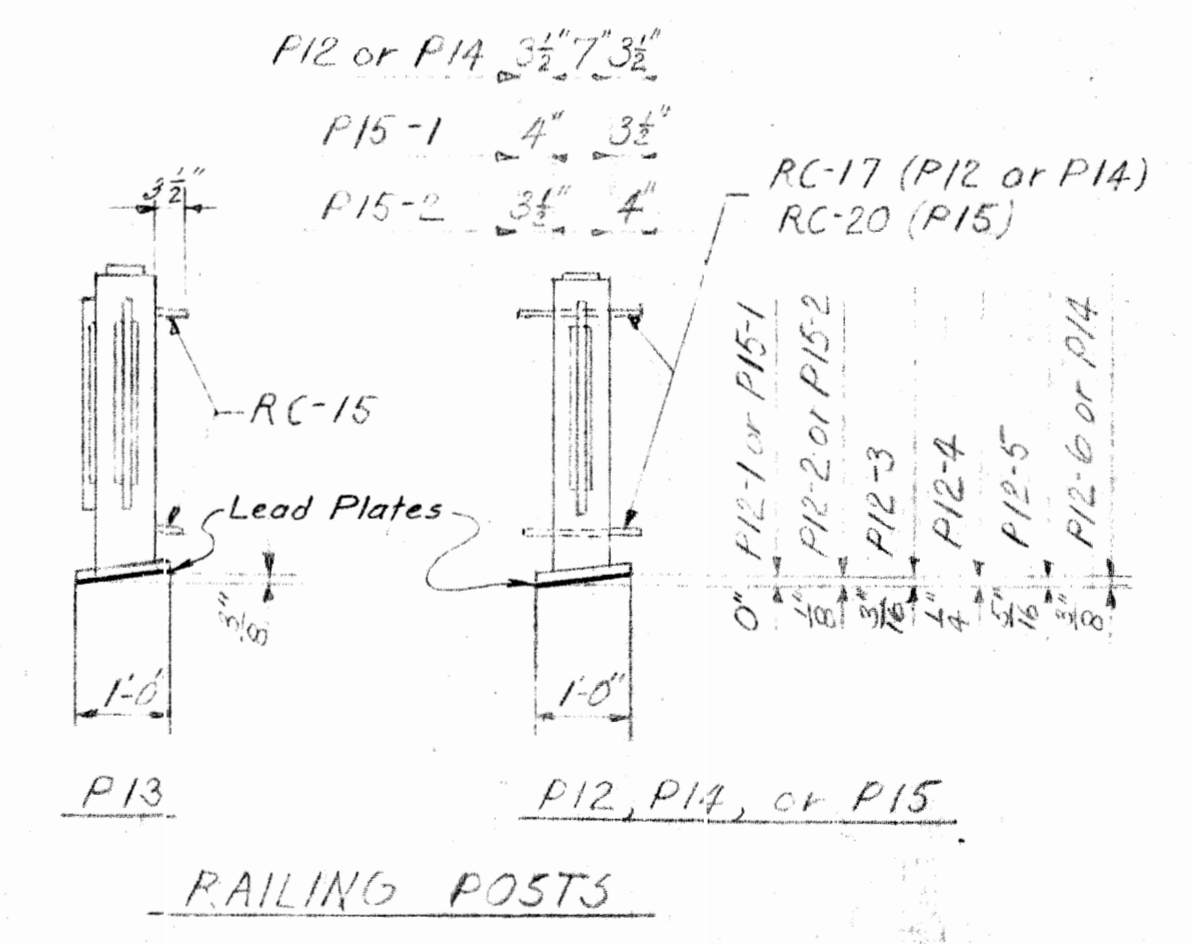
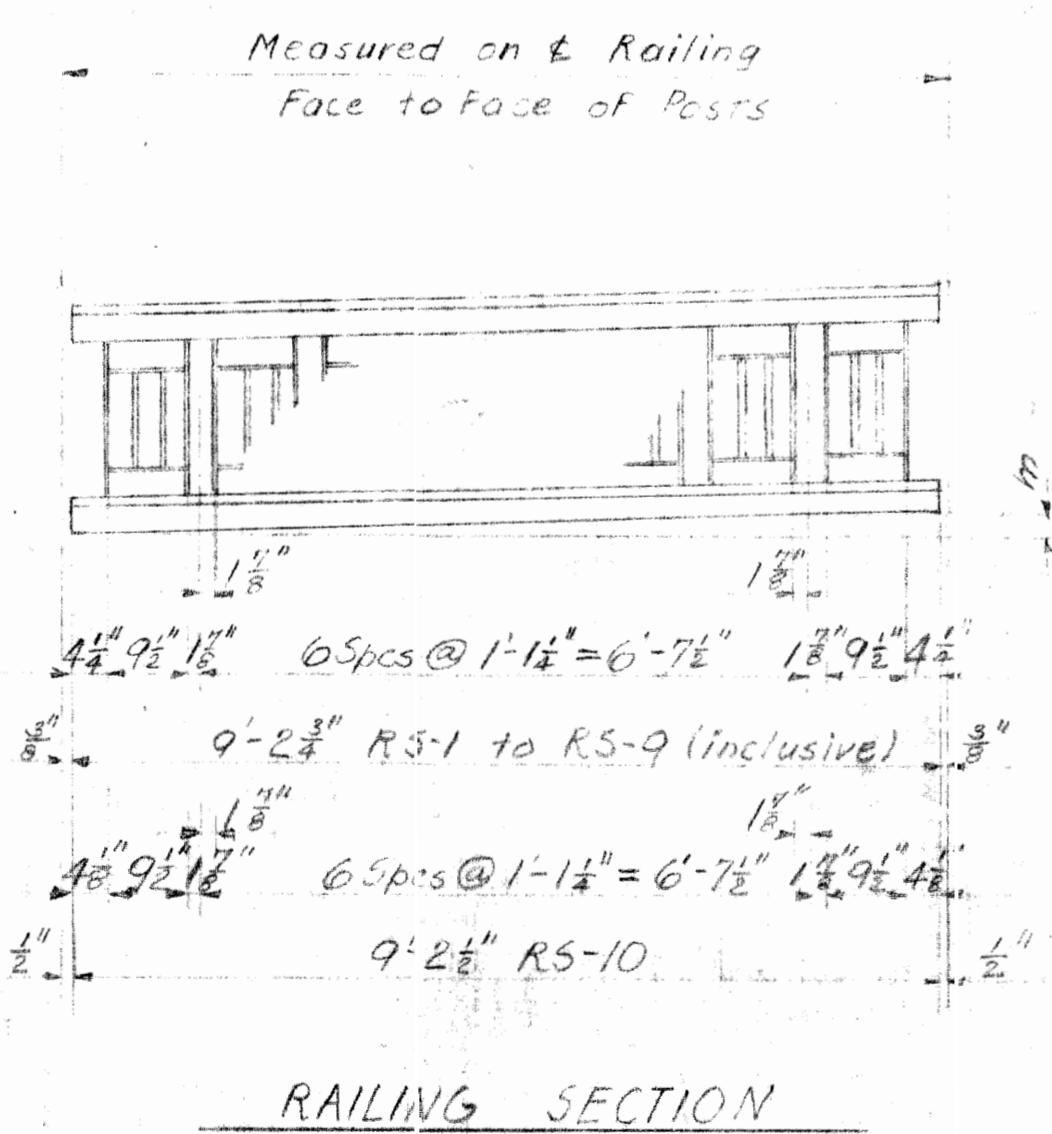
MICHIGAN STATE HIGHWAY DEPARTMENT
CHARLES M. ZIEGLER
STATE HIGHWAY COMMISSIONER
CHENE ST. CROSSING THE EDSSEL FORD EXPRESSWAY IN THE CITY OF DETROIT
SUPERSTRUCTURE DETAILS
HAZLET & ERDAL - CONSULTING ENGINEERS FILE NO 756
APPROVED [Signature]
REVISIONS
NO. DESCRIPTION DATE BY
A Added 3/8\"/>

Table with 4 columns: NO., DESCRIPTION, DATE, BY. Row A: Added 3/8\"/>

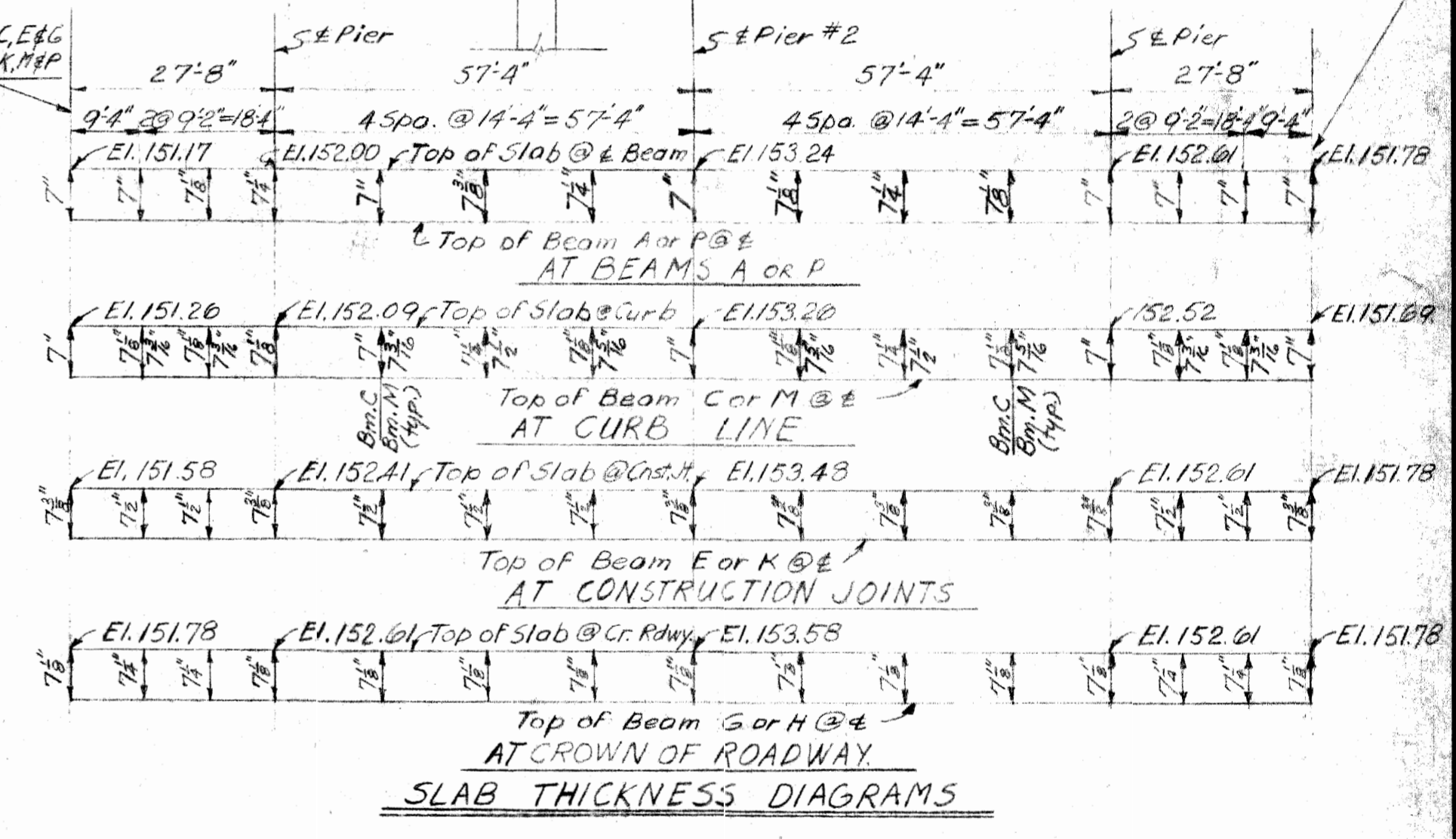
Table with 4 columns: SQUARE, BOSS, DATE, BY. Row 1: 10-19-54, B.C.K., 6-21-54. Row 2: 7-1-54. Row 3: 11 of 52. Row 4: B56 of 82-22-10.



BILL OF RAILING MATERIAL			
MARK	NO	REQ'D	DESCRIPTION
RS-1	12	3 3/8"	RAILING SECTION
RS-2	4	3 1/8"	"
RS-3	4	2 5/8"	"
RS-4	2	2"	"
RS-5	2	1 7/8"	"
RS-6	2	1 3/8"	"
RS-7	2	1 1/4"	"
RS-8	2	0"	"
RS-9	2	0"	"
RS-10	2	3/4"	RAILING SECTION
P12-1	2		RAILING POST
P12-2	2		"
P12-3	4		"
P12-4	4		"
P12-5	4		"
P12-6	3		"
P14	4		"
P15	4		"
P15-1	2		RAILING POST
P15-2	2		"
RF-3	16		RAILING FLANGE
RF-4	120		RAILING FLANGE
RC-15	8		RAILING CLIP
RC-17	56		RAILING CLIP
RC-20	8		RAILING CLIP
BOLTS	136		3/4" x 2 1/4" HEX HD. BOLTS
WASHERS	136		3/4" LOCK WASHERS
ANCHOR BOLTS	144		3/4" x 10" BOLTS, 53 HD. HEX NUT, PROJ. 2"
LEAD PLATES	36		LEAD PLATES OR 1/8" FABRIKA-ALT.
Approximate Total Railing Weight = 21,400#			



NOTES:
 P15 Posts are the same as Post P14 except RC-20 clips are used on P15.
 All Railing Flanges to be RF-4 and all Railing Clips to be RC-17 unless otherwise noted.
 For Railing, Molding & Bevel Details not shown here-on, see M.S.H.D. Std. drawing R4.
 For Railing Posts, Railing Clip & Railing Flange Details not shown see M.S.H.D. Std. dwg. R5.



NOTES-
 The minimum slab thickness is 7" and is increased to allow for transverse crown, vertical curve, dead load deflection & pre-camber.
 For camber see Sheet N-14.
 Particular care shall be taken in determining header elevations.
 Slab thickness shall be adjusted as required if the actual camber varies or if camber exists where no camber is specified.
 All Elevations are to top of concrete Slab.

This sheet to be worked with Sheets N-10 & 11

MICHIGAN STATE HIGHWAY DEPARTMENT
 CHARLES M. ZIEGLER
 STATE HIGHWAY COMMISSIONER
 CHENE ST. CROSSING THE EDSEL FORD EXPRESSWAY IN THE CITY OF DETROIT
RAILING AND SLAB THICKNESS DETAILS
 HAZELT & ERDAL - CONSULTING ENGINEERS FILE NO. 756

APPROVED: *[Signature]* 1/27/55
 CHIEF BRIDGE DRAFTSMAN
 APPROVED: *[Signature]* 1-27-55
 ENGINEER OF BRIDGE DESIGN
 APPROVED: _____
 BRIDGE ENGINEER

NO. 1 REVISIONS DESCRIPTION DATE BY

SO AD BOSS *[Signature]* 10-15-54
 DR. W. BY *[Signature]* 8-24-53
 TRACED BY *[Signature]* 9-27-53
 CH. CRED BY *[Signature]* 9-2-53
 SHEET 12 OF 32
 E 56 OF 82-22-10