

NOTE:
REVERSE PROCEDURE FOR
OPPOSITE DIRECTION FOR
STAGE II.

STAGE I

SCALE: 1" = 40'

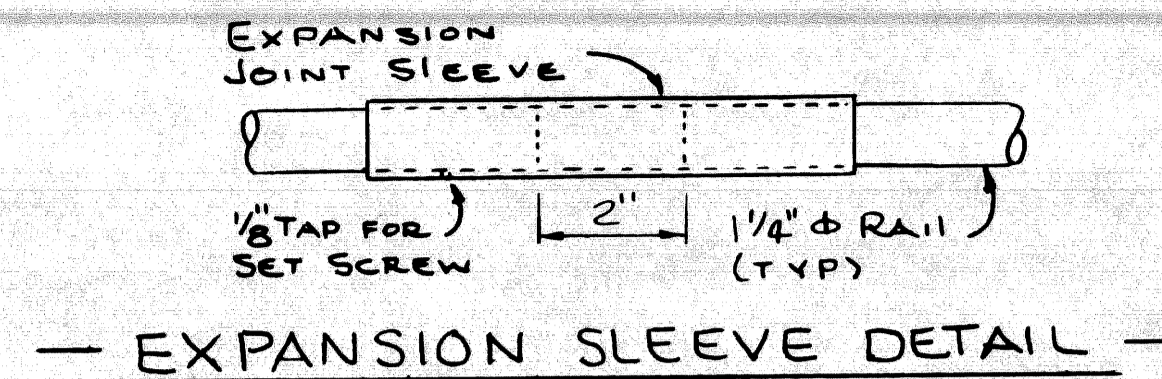
MICHIGAN DEPARTMENT OF TRANSPORTATION
LIVERNOIS AVE. OVER I-96
SCREENING
STAGING AND CONSTRUCTION SIGNING

PLANS PREPARED BY
CITY OF DETROIT
DEPARTMENT OF PUBLIC WORKS
CITY ENGINEERS OFFICE
BUREAU OF HIGHWAYS AND EXPRESSWAYS
APPROVED *T. E. [Signature]*
STRUCTURAL ENGINEER

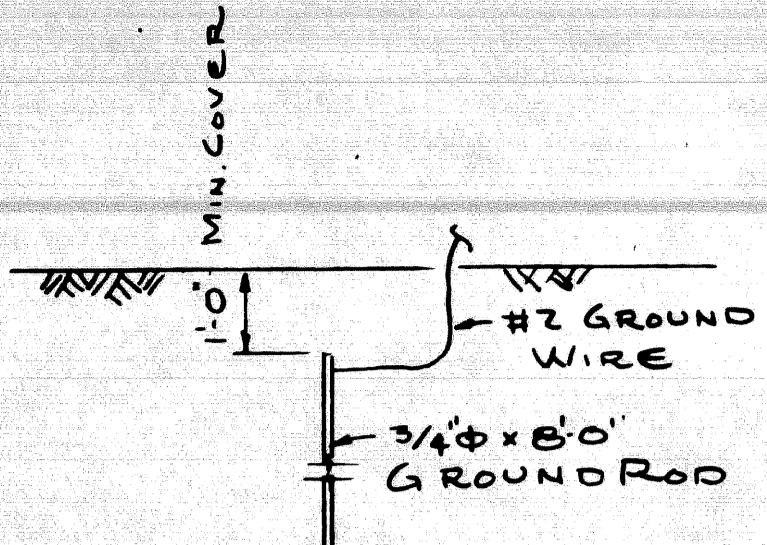
JOB No.
79-22-26 D

REVISIONS			
NO.	DESCRIPTION	DATE	BY

SQUAD BOSS	<i>[Signature]</i>	1-29-81
DRAWN BY	<i>A.G.</i>	1-29-81
CHECKED BY	<i>[Signature]</i>	1-29-81
SHEET OF		
S30 OF 82123 H		

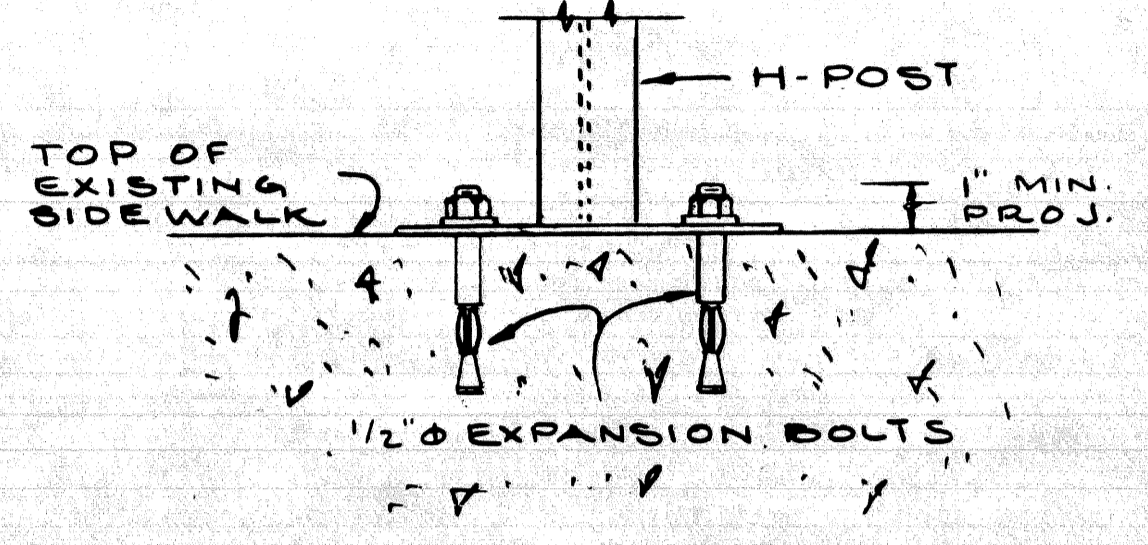
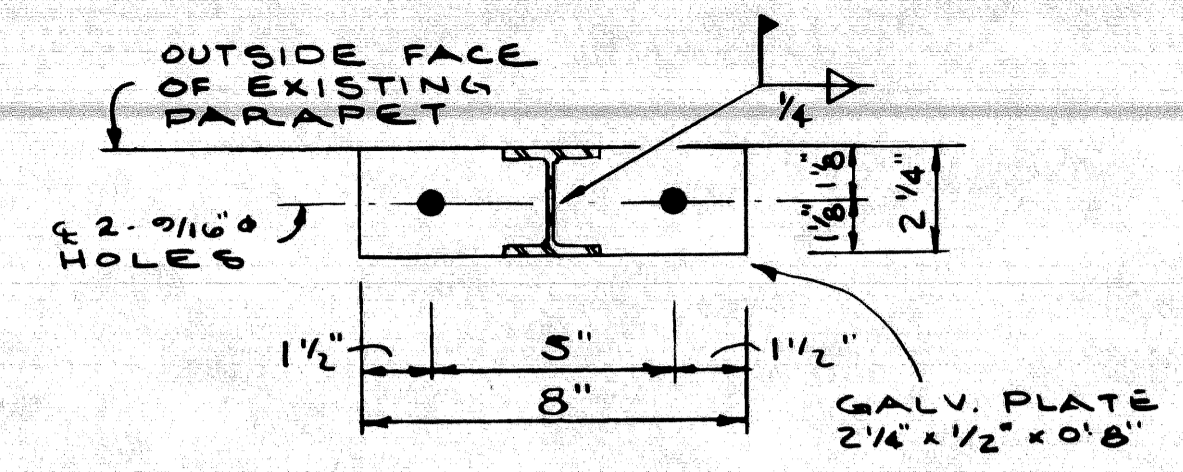


— EXPANSION SLEEVE DETAIL —

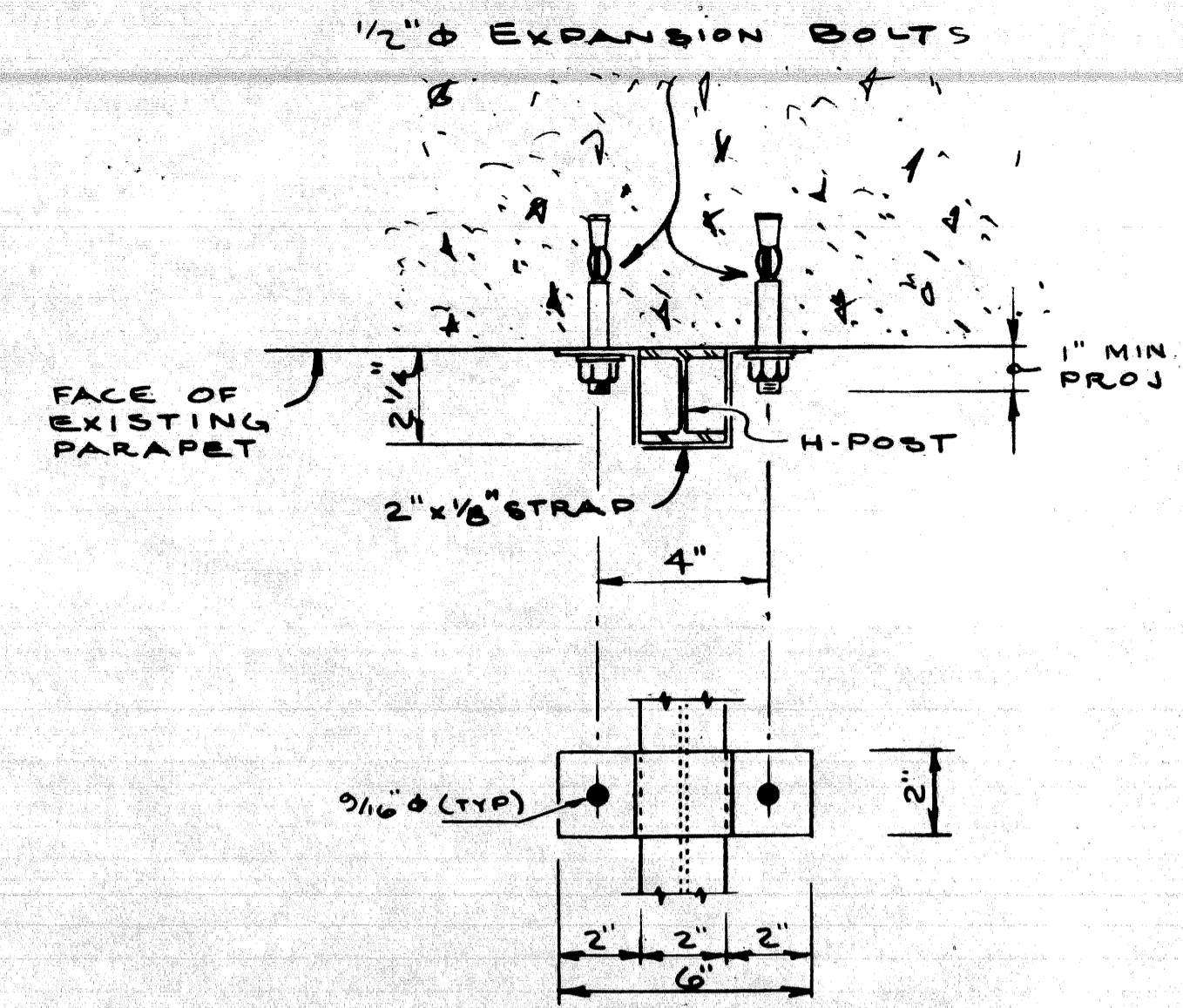


1. ALL UNDERGROUND CONNECTIONS SHALL BE CALDWELL THERMITE WELD, GAS OR ARC WELD.
2. EXPOSED CONNECTIONS MAY BE SPLIT BOLT OR CLAMP TYPE.
3. GROUND WIRE SHALL BE #2 AWG (STRANDED SOFT DRAWN COPPER WIRE).
4. RESISTANCE TO GROUND FOR ANY CONTINUOUS SECTION OF FENCE SHALL NOT EXCEED 25 OHMS PER GROUND ROD.

— GROUNDING DETAIL —



— BASE PLATE DETAILS —



— BRACKET DETAILS —

QUANTITIES		
ITEM	UNIT	AMOUNT
PEDESTRIAN FENCING, STRUCTURES	S.F.	3149
ELECTRICAL GROUNDING SYSTEM	EA	2

FENCING NOTES

All work shall conform to MDOT STANDARD SPECIFICATIONS FOR CONSTRUCTION, 1979 EDITION

All fence fabric shall be galvanized, #9 gage with a 2" mesh and with knuckling at the bottom selvage.

The Posts shall be 2 1/4" x 2" galvanized H-Posts weighing 4.1 PLF. Round Posts having a 2 3/8" O.D. weighing 5.79 PLF. Galvanized may be used with similar connection details.

The nominal 1 1/4" diameter braces shall be 1 3/8" O.D. steel pipe or tubing weighing 2.27 PLF. Galvanized.

All posts and tubing shall be furnished with the manufacturer's standard connections and its minimum weight shall be within 5% of that specified.

Posts and tubing shall be bent in the shop as shown on the plans.

All components are to be galvanized. Bolts, nuts and washers are to be galvanized in accordance with ASTM A 153.

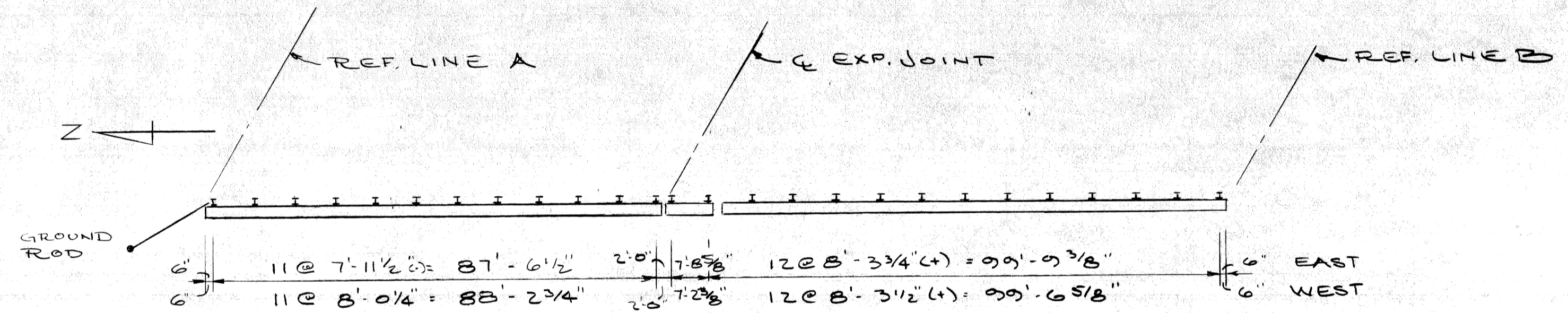
Tension bars shall be 3/4" x 1/4" galvanized steel.

Contractor shall verify field conditions before fabrication.

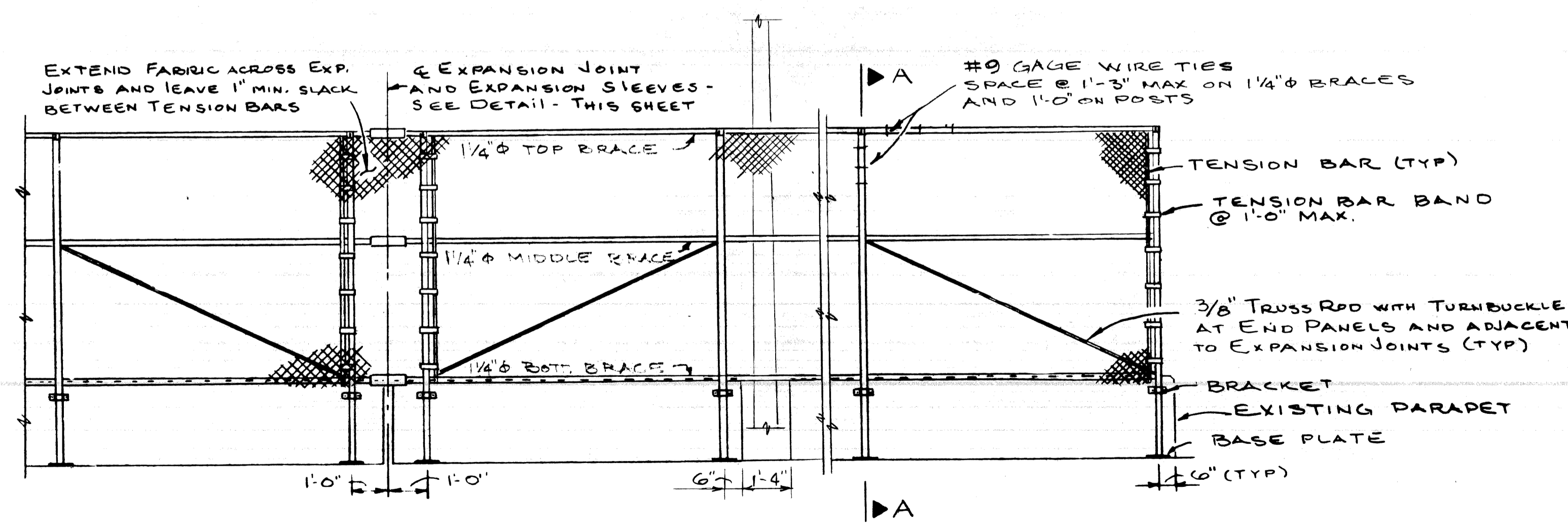
Care is to be taken in placing expansion bolts and brackets so as to insure that the brackets hold the posts firmly against concrete. Shim if necessary.

PEDESTRIAN FENCING STRUCTURES shall include the fabric, posts, braces, expansion bolts, brackets and all suitable connections and fittings.

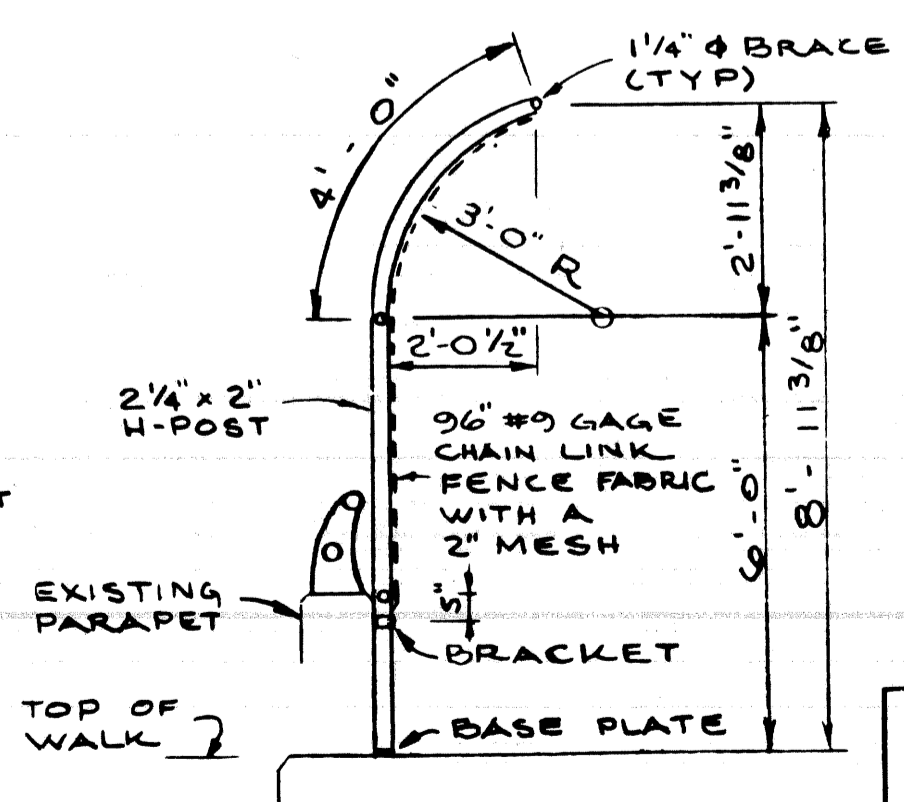
1/2" diameter expansion bolts shall be Phillips red head galvanized wedge anchors WS 1242 G or approved equal.



— PLAN —



TYPICAL ELEVATION



SECTION A-A

PLANS PROVIDED BY
CITY OF DETROIT
DEPARTMENT OF PUBLIC WORKS
CIVIL ENGINEER OFFICE

APPROVED: *T.E.M. Johnson*
STRUCTURAL ENGINEER

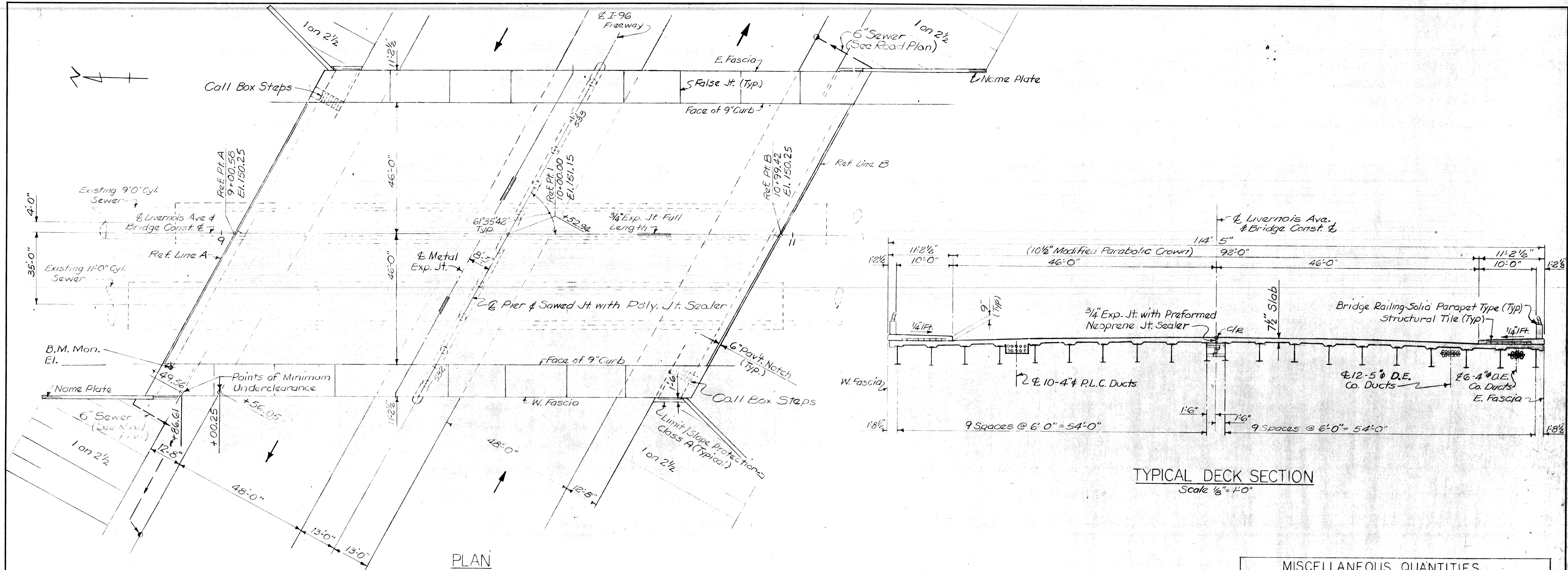
JOB No. 79-22-26 D

MICHIGAN DEPARTMENT OF TRANSPORTATION
LIVERNOS OVER I-96
PROTECTIVE SCREENING DETAILS

REVISIONS			
NO.	DESCRIPTION	DATE	BY

SQUAD BOSS	DATE	BY
DRAWN BY	DATE	BY
CHECKED BY	DATE	BY
SHEET	OF	

S 30 OF 82123

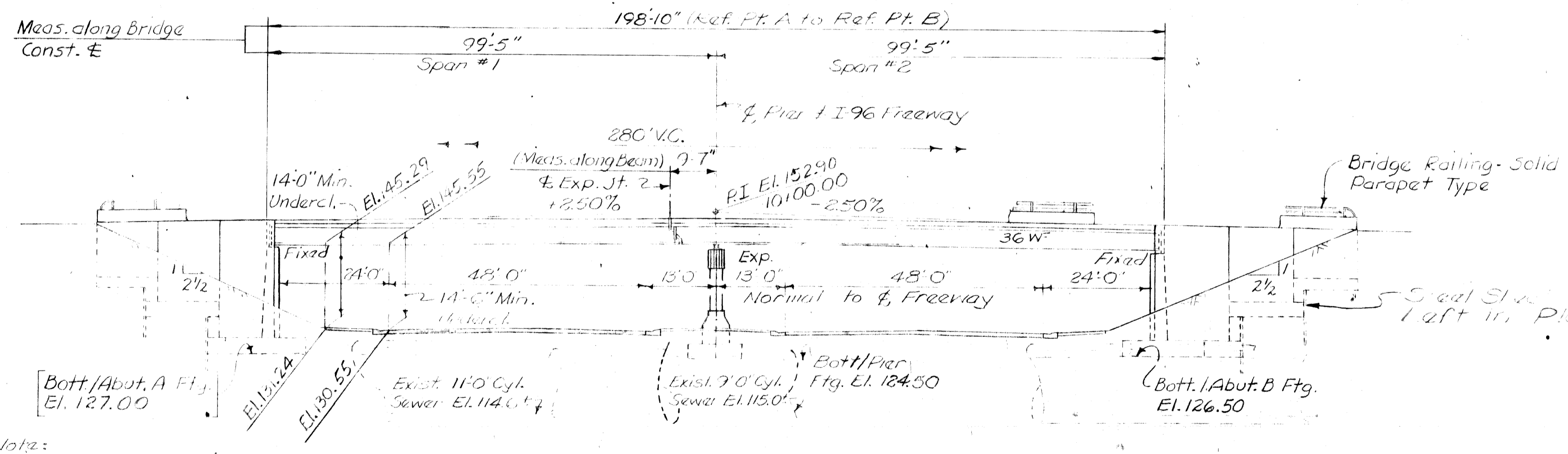


MISCELLANEOUS QUANTITIES		
Item	Unit	Amount
Unclassified Excavation	Cu.Yds.	850
Slope Protection Headers	Lin. Ft.	315
Slope Protection - Class A	Sq.Yds.	360

NOTES

The design of this structure is based on the M.D.S.H. Standard Specifications for the Design of Highway Bridges-1958 edition and current AASHTO Standard Specifications for Highway Bridges(H520-44 Loading). Live load plus impact deflection equals 1/1000 of span length or 1/350 of cantilever arm. Grouted Riprap as Slope Protection - Class A is not to be used on this project. See Std.Sh. SP2. Top of roadway slab and tops of curbs are parallel to the vertical curve. Tamped Clay and Selected Excavated Material are incidental to Unclassified Excavation.

COPY
EXISTING BRIDGE DETAILS
(NOT FOR CONSTRUCTION)



Notes:
All beams 36W with Composite Construction.

REVISIONS

Work this Sheet with Sh.#7

PLANS PREPARED BY THE BOARD OF
WAYNE COUNTY ROAD COMMISSIONERS
PHILIP J. NEUDECK WILLIAM E. KREGER

APPROVED: *[Signature]* APPROVED: *[Signature]*

MICHIGAN DEPARTMENT OF STATE HIGHWAYS

APPROVED: *[Signature]* APPROVED: *[Signature]*

DESIGN SUPERVISING ENGINEER ENGINEER OF DESIGN CONSULTANTS

LIVERNOIS AVE. OVER I-96 JEFFRIES FREEWAY
GENERAL PLAN OF STRUCTURE

ISSUE NO. 1 DATE 3-12-69
COUNTY JOB 1919 SHEET NO. 6
STATE PROJECT S30 of 82123H