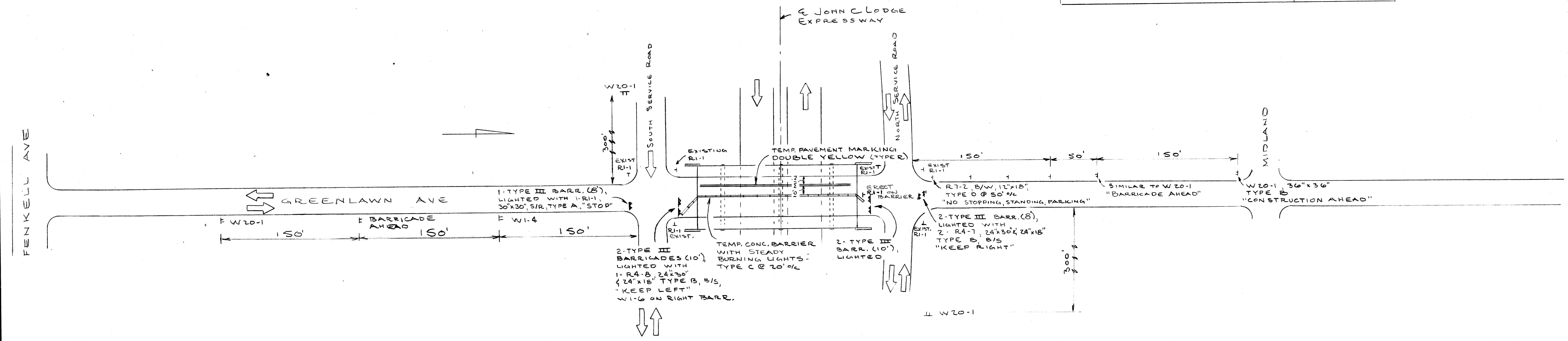


SIGNING FOR NEW PARAPET AND FENCING ONLY. REVERSE PROCEDURE FOR OTHER SIDE. IF WORK IS DONE DURING OVERLAY - SEE BELOW.

QUANTITIES		
ITEM	UNIT	AMOUNT
REMOVING PAVEMENT MARKINGS	LF	500
PLACING TEMP PAVEMENT MARKINGS	LF	1000
BARRICADE, TYPE III, LIGHTED	EA	7
TEMPORARY CONCRETE BARRIER	LF	210
MINOR TRAFFIC DEVICES	LS	1
SIGN, TYPE A, TEMPORARY	SF	20
SIGN, TYPE B, TEMPORARY	SF	95
SIGN, TYPE D, TEMPORARY	SF	6



SIGNING FOR OVERLAY OF 1/2 OF ROADWAY. REVERSE PROCEDURE FOR OTHER SIDE. PARAPET WORK MAY BE COMBINED WITH OVERLAY ON ONE SIDE ONLY. MAINTAIN ONE LANE OF TRAFFIC IN EACH DIRECTION AT ALL TIMES.

SCALE: 1"=50'

MICHIGAN DEPARTMENT OF TRANSPORTATION
GREENLAWN AVE OVER US 10
SCREENING, RAILING AND OVERLAY
STAGING AND CONSTRUCTION SIGNING

PLANS PREPARED BY
CITY OF DETROIT
DEPARTMENT OF PUBLIC WORKS
CITY ENGINEERS OFFICE

APPROVED: *T. E. McManis*
STRUCTURAL ENGINEER

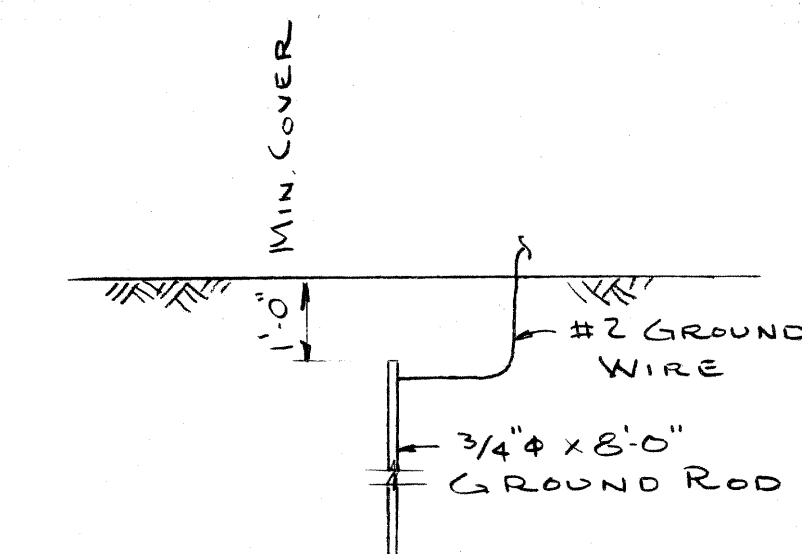
JOB No.
79-22-26 Q

REVISIONS			
NO.	DESCRIPTION	DATE	BY

SQUAD BOSS	A. METZGER	9-24-81
DRAWN BY	RAY	9-24-81
CHECKED BY		
SHEET		

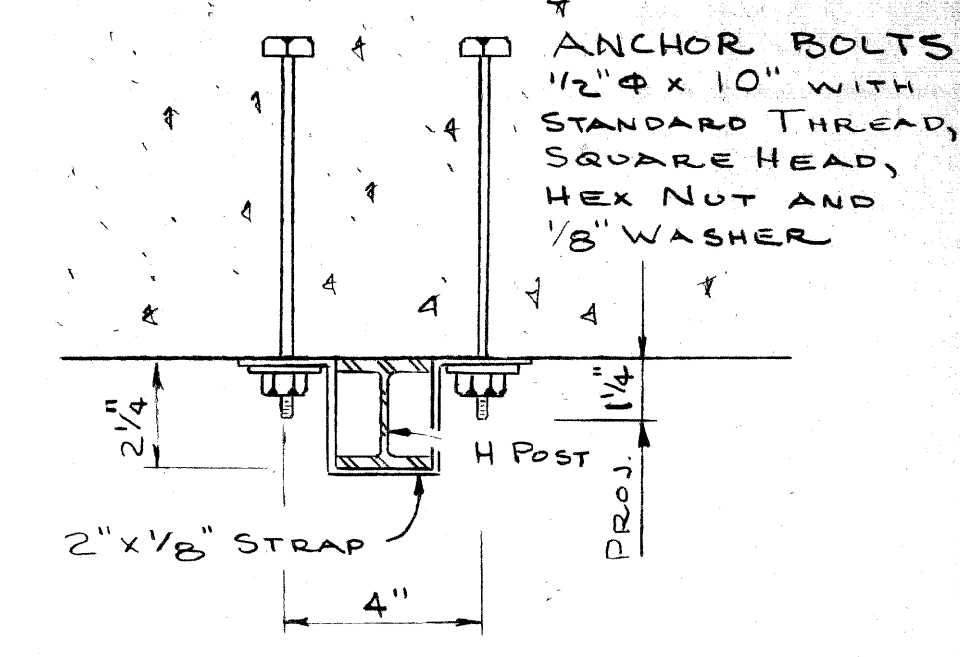
S 22 OF 82112

QUANTITIES		
ITEM	UNIT	AMOUNT
BRIDGE RAILING-SOLID PARAPET TYPE (MODIFIED)	LF	322
PEDESTRIAN FENCING-STRUCTURES	SF	2584
ELECTRICAL GROUNDING SYSTEM	EA	2
EPOXY ANCHORED BARS	EA	440

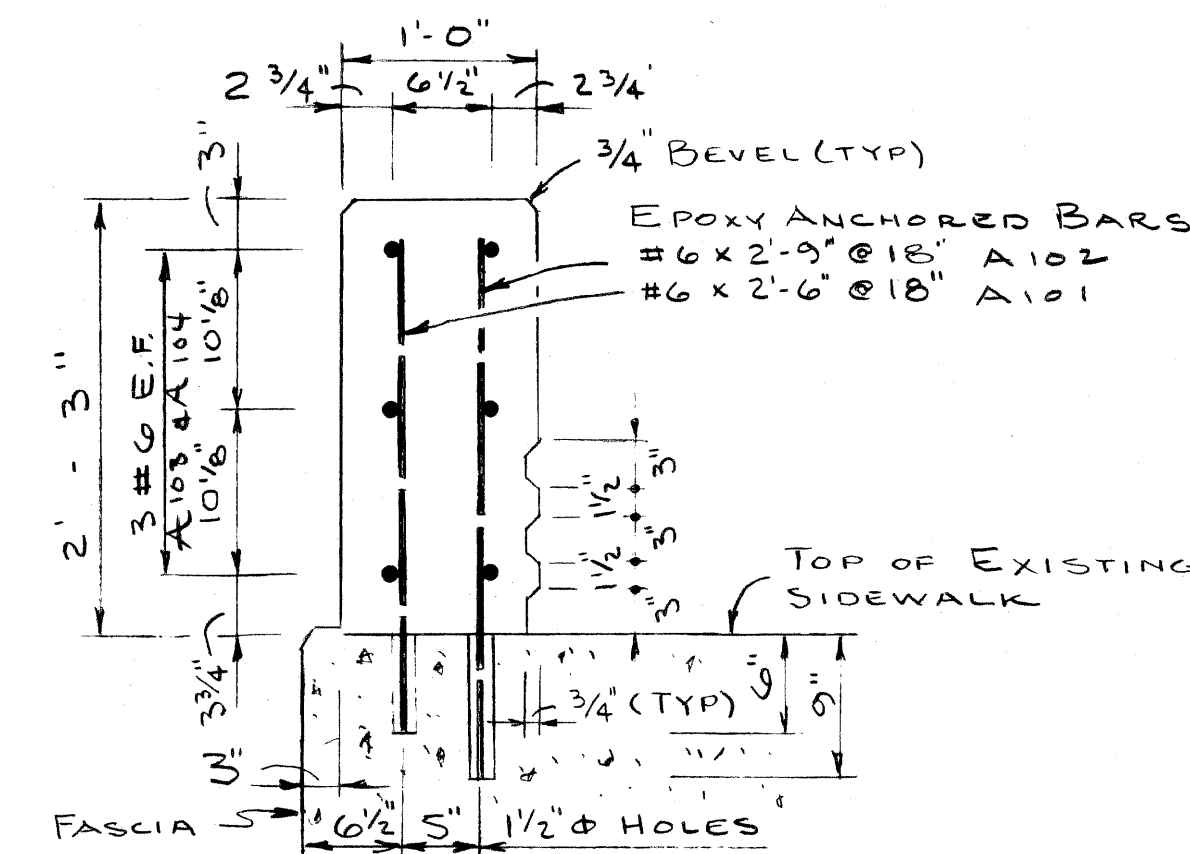


1. All underground connections shall be coldweld, thermite weld, gas or arc weld.
2. Exposed connections may be split bolt or clamp type.
3. Ground wire shall be #2 AWG stranded soft drawn copper wire.

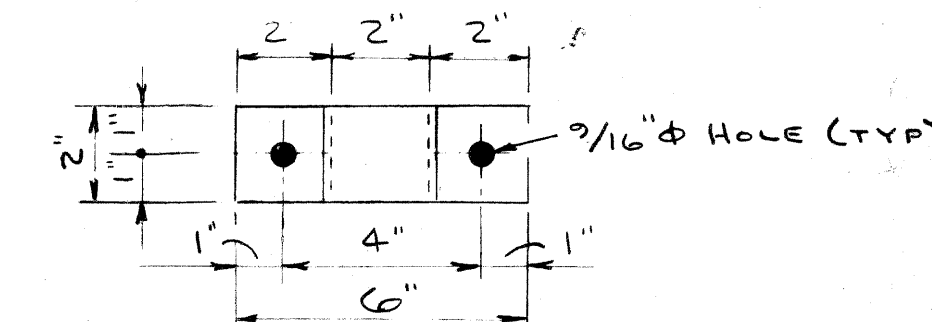
GROUNDING DETAIL



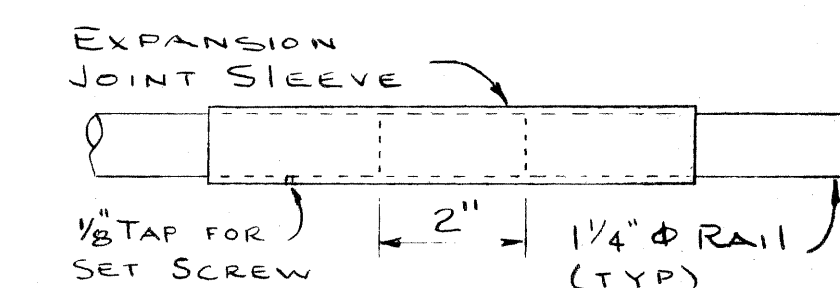
BRACKET DETAIL



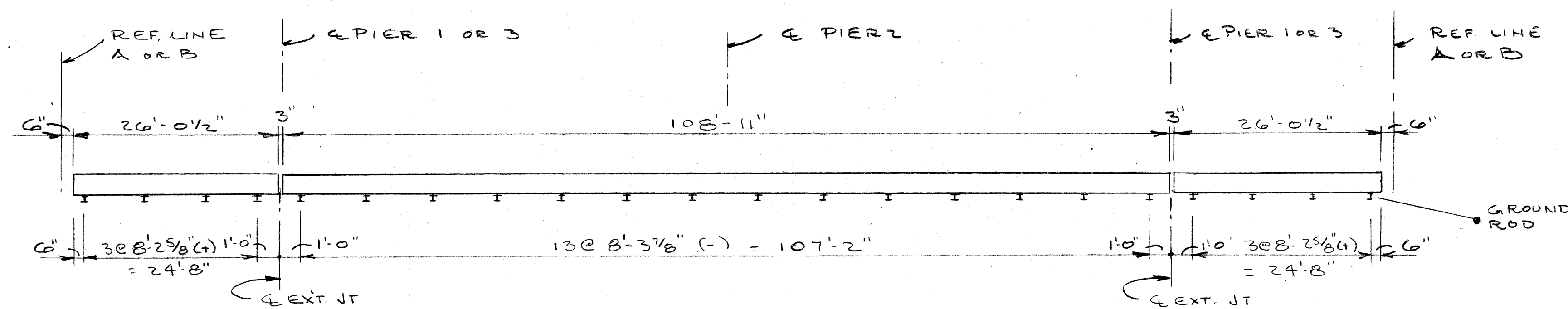
BRIDGE RAILING - SOLID PARAPET TYPE (MODIFIED)



STRAP DETAIL



EXPANSION SLEEVE DETAIL



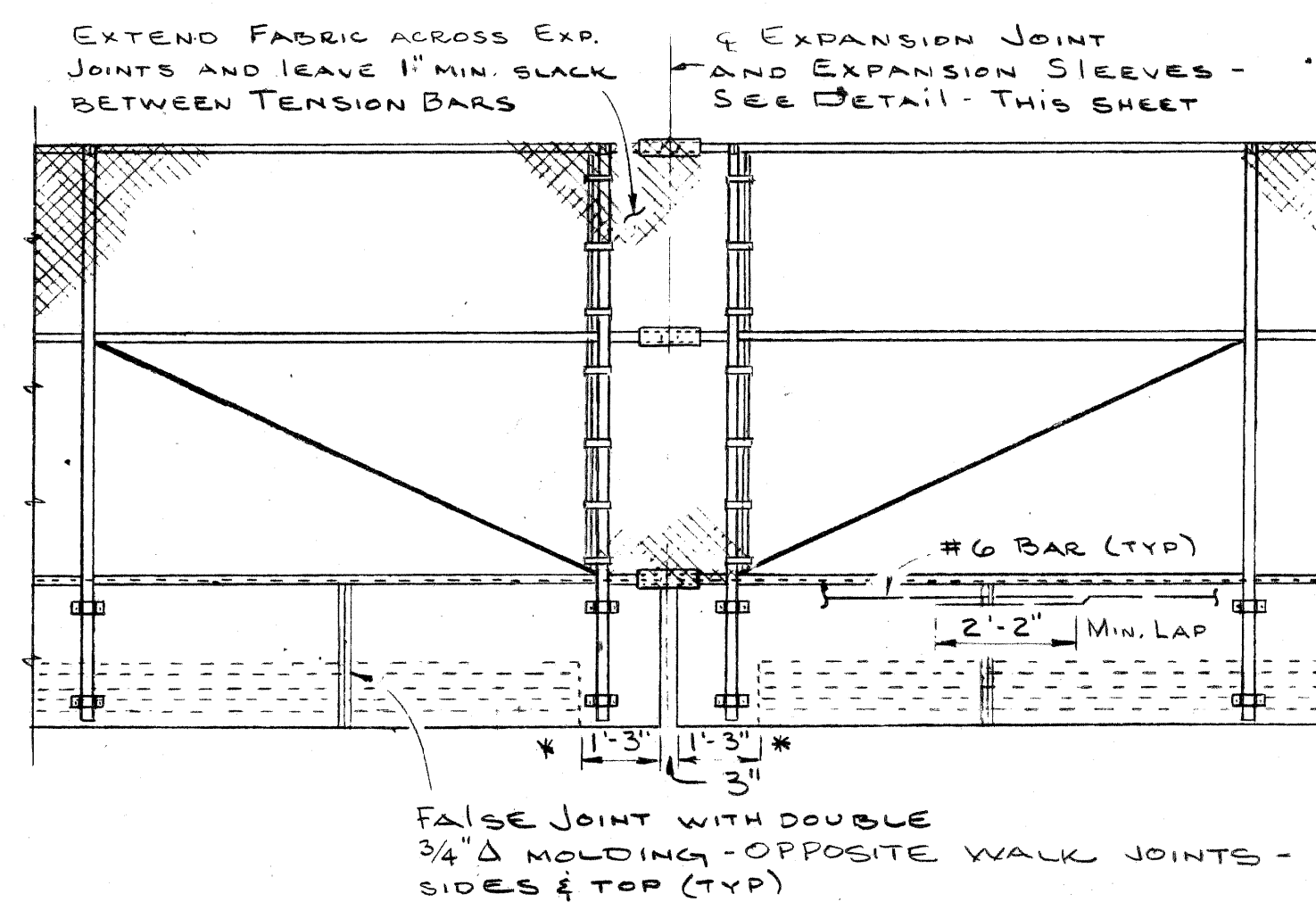
PLAN

U.T.S.

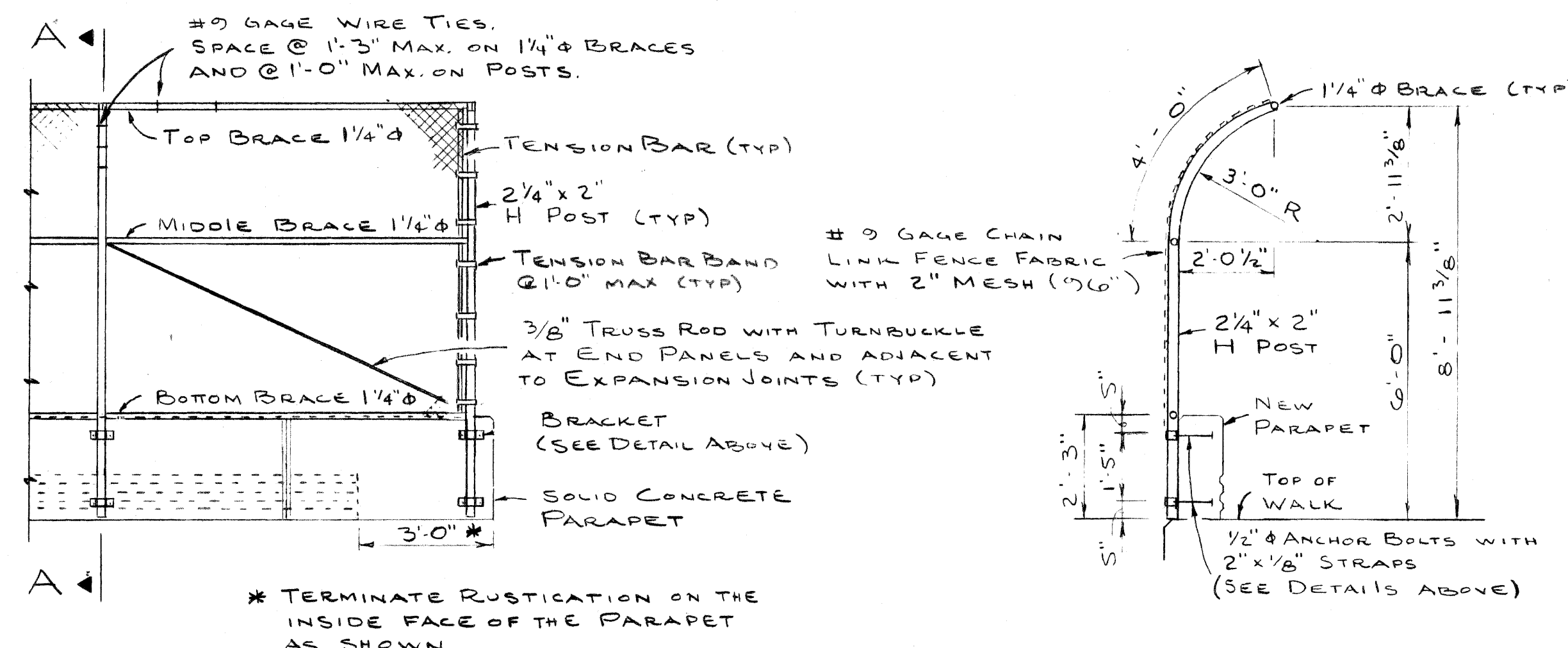
STEEL REINF.-EPOXY COATED					
LOCATION	MARK	SIZE	LENGTH	NO REQ	TOTAL
ALL SPANS	A 101	#6	2'-6"	220	826
ALL SPANS	A 102	#6	2'-9"	220	909
SPANS 1 & 4	A 103	#6	25'-6"	24	919
SPANS 2 & 3	A 104	#6	37'-9"	36	2041
					4695

RAILING AND FENCING NOTES

- All work shall conform to MDOT STANDARD SPECIFICATIONS FOR HIGHWAY CONSTRUCTION, 1979 EDITION.
- All fabric for chain link fence shall be furnished with knuckling at both selvages.
- The posts shall be 2 1/4" x 2" galvanized H posts weighing 4.1 p.l.f. Round posts having a 2 1/8" O.D. weighing 5.79 p.l.f. galvanized may be used with similar connection details.
- The nominal 1 1/4" braces shall be 1 5/8" O.D. steel pipe or tubing weighing 2.27 p.l.f. galvanized.
- All posts and tubing shall be furnished with the manufacturers standard connections and its minimum weight shall be within 5% of that specified.
- Posts and tubing shall be bent in the shop as shown on the plans.
- All components are to be galvanized. Bolts, nuts and washers are to be galvanized in accordance with ASTM A 153.
- Tension bars shall be 3/4" x 1/4" galvanized steel.
- Fence fabric shall be galvanized, #9 gage with a 2" mesh.
- Contractor shall verify field conditions before fabrication.
- Care is to be taken in placing anchor bolts and brackets so as to insure that the brackets hold the posts firmly against concrete. Shim if necessary.
- PEDESTRIAN FENCING-STRUCTURES shall include the fabric, posts, braces, anchor bolts, brackets and all suitable connections and fittings.
- BRIDGE RAILING-SOLID PARAPET TYPE (MODIFIED) shall include all materials for the conc. parapet including concrete, reinf. steel and removal of existing railings.
- WHERE SIGNS MOUNTED ON BRIDGE FASCIAS INTERFERE WITH CONSTRUCTION, THEY MAY BE REMOVED AND RESET AT THE CONTRACTORS EXPENSE.



TYPICAL ELEVATION



SECTION A-A

PLANS PREPARED BY
CITY OF DETROIT
 DEPARTMENT OF PUBLIC WORKS
 CITY ENGINEERS OFFICE

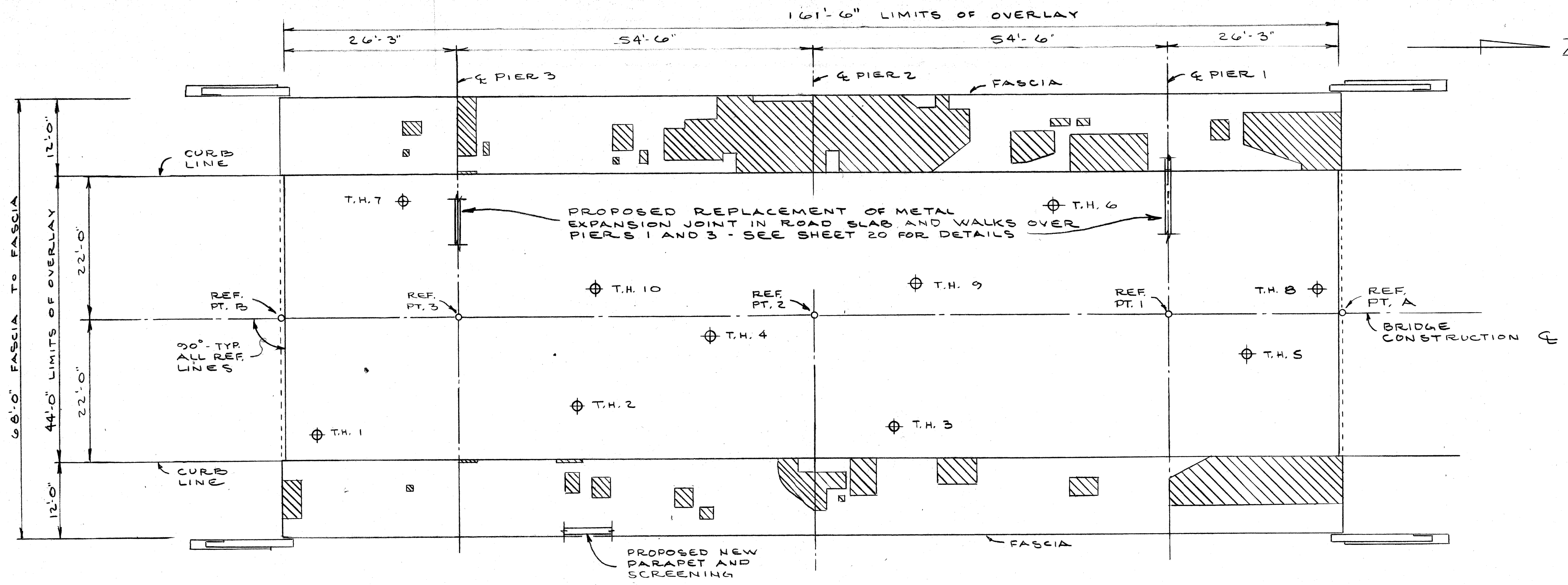
APPROVED: *T. E. McLaw*
 STRUCTURAL ENGINEER

JOB No.
 79-22-26 Q

MICHIGAN DEPARTMENT OF TRANSPORTATION
 GREENLAWN AVE OVER US 10
 SCREENING, RAILING & OVERLAYMENT
 SOLID PARAPET AND SCREENING DETAILS

REVISIONS			
NO.	DESCRIPTION	DATE	BY

NO. 22 OF 82112



PLAN
SCALE: 3/32" = 1'-0"

INDICATES SPALLED AND PATCHED AREAS AS DETERMINED BY FIELD INSPECTION AND/OR DELAMINATED AREAS AS DETERMINED BY A DELAMINATION DETECTOR.

QUANTITIES		
ITEM	UNIT	AMOUNT
REMOVING BITUMINOUS SURFACE	S.Y.	888
BIT. SURFACING MIXTURE NO. 12 WM	TONS	5
PRESSURE RELIEF JOINT	L.F.	88
FULL DEPTH PATCHES	C.Y.	2
SCARIFYING	S.Y.	790
HAND CHIPPING	S.Y.	150
STEEL REINFORCEMENT, EPOXY COATED	LBS	600
PATCHING MORTAR OR CONCRETE	C.Y.	7
LATEX-MODIFIED SURFACING MIXTURE	C.Y.	35
CONSTRUCTING BRIDGE DECK SURFACE	S.Y.	790

NOTES

THE VOLUME OF LATEX-MODIFIED SURFACING MIXTURE IS BASED ON THE OVERLAY AND AN ESTIMATED QUANTITY TO FILL HAND CHIPPED AREAS AND TO MAKE GRADE ADJUSTMENTS AS DETERMINED BY THE ENGINEER.

HAND CHIPPING MAY BE DONE BY SCARIFYING AT THE CONTRACTOR'S OPTION.

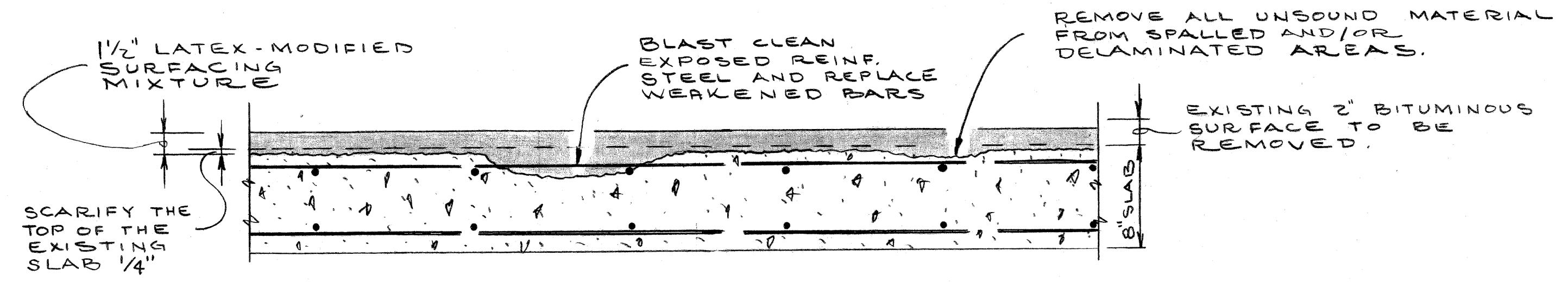
CARE SHALL BE TAKEN SO THAT REMOVAL MATERIAL DOES NOT FALL FROM THE STRUCTURE.

SAW CUT A JOINT 1/4" x 3/8" DEEP IN OVERLAY OVER PIER 2 AND FILL THE JOINT WITH HOT POURED JOINT SEALER (INC.)

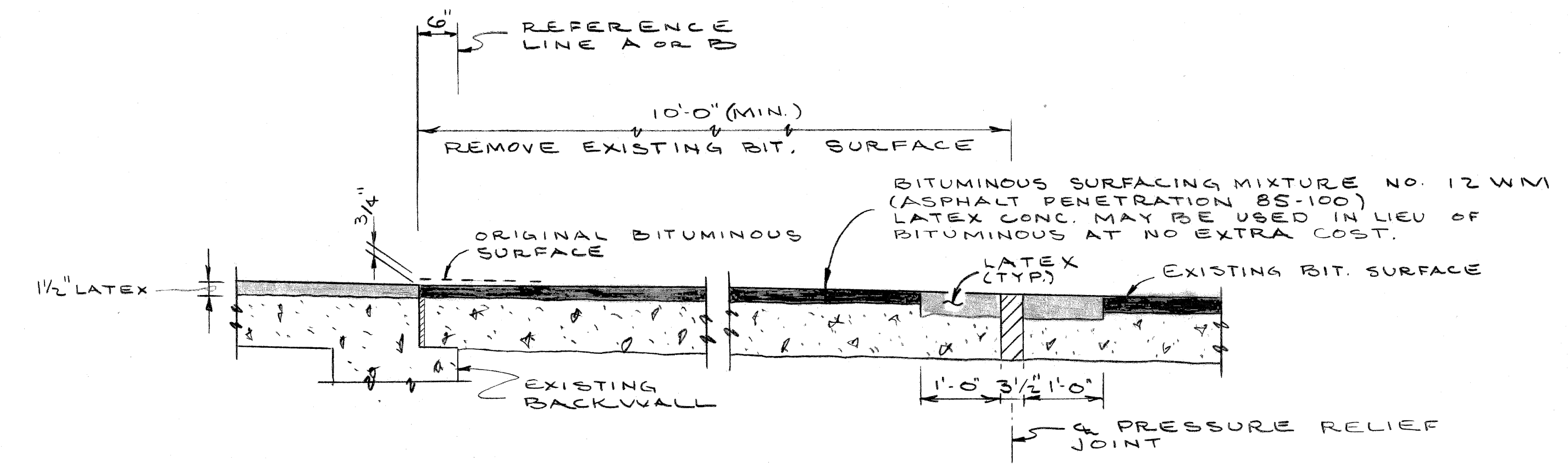
THE CONSTRUCTION JOINT IN THE WALKS OVER PIER 2 SHALL BE CLEANED OUT AND REFILLED WITH HOT POURED JOINT SEALER (INCIDENTAL)

ALL NEW REINFORCING STEEL SHALL BE EPOXY COATED

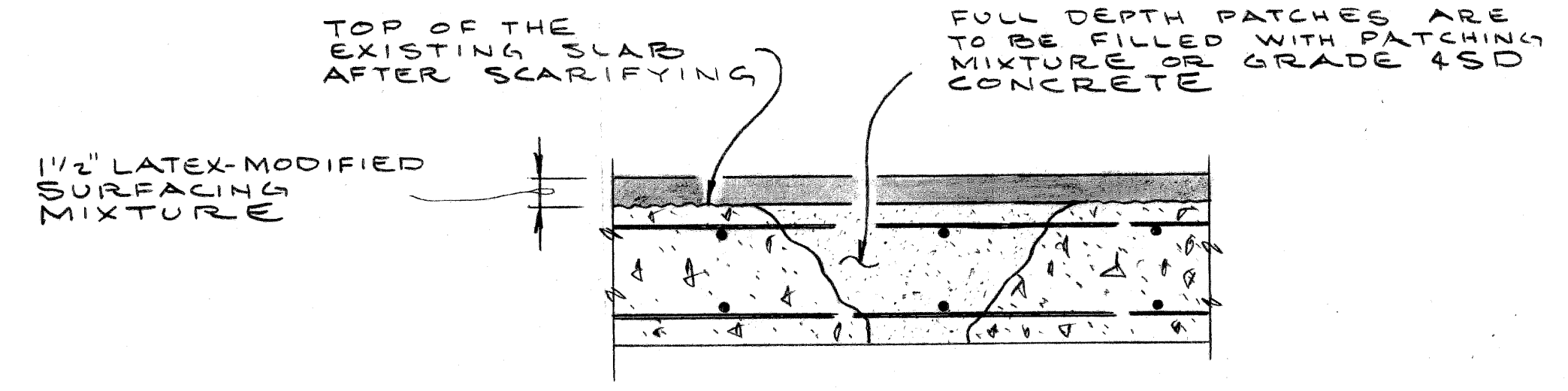
TEST HOLE DATA				
TEST HOLE	DEPTH TO CONC.	STEEL	CHLORIDE CONTENT AT STEEL LBS/C.Y.	
			ABOVE	BELOW
1	3"	5 3/4"	6.87	5.39
2	2"	4"	2.59	2.59
3	2"	4 1/2"	6.54	2.75
4	1 1/2"	5"	2.75	1.39
5	2"	4"	1.88	1.55
6	2"	5"	2.59	4.82
7	2 1/4"	5"	1.22	1.22
8	1 3/4"	4 1/2"	2.75	1.15
9	2"	4 1/4"	2.87	1.88
10	2"	4 1/4"	1.72	1.88



PARTIAL DECK SECTION
SCALE: 1 1/2" = 1'-0"



APPROACH WEDGE DETAIL
SCALE: 3/4" = 1'-0"



FULL-DEPTH PATCHING DETAIL
SCALE: 1 1/2" = 1'-0"

PLANS PREPARED BY
CITY OF DETROIT
DEPARTMENT OF PUBLIC WORKS
CITY ENGINEERS' OFFICE

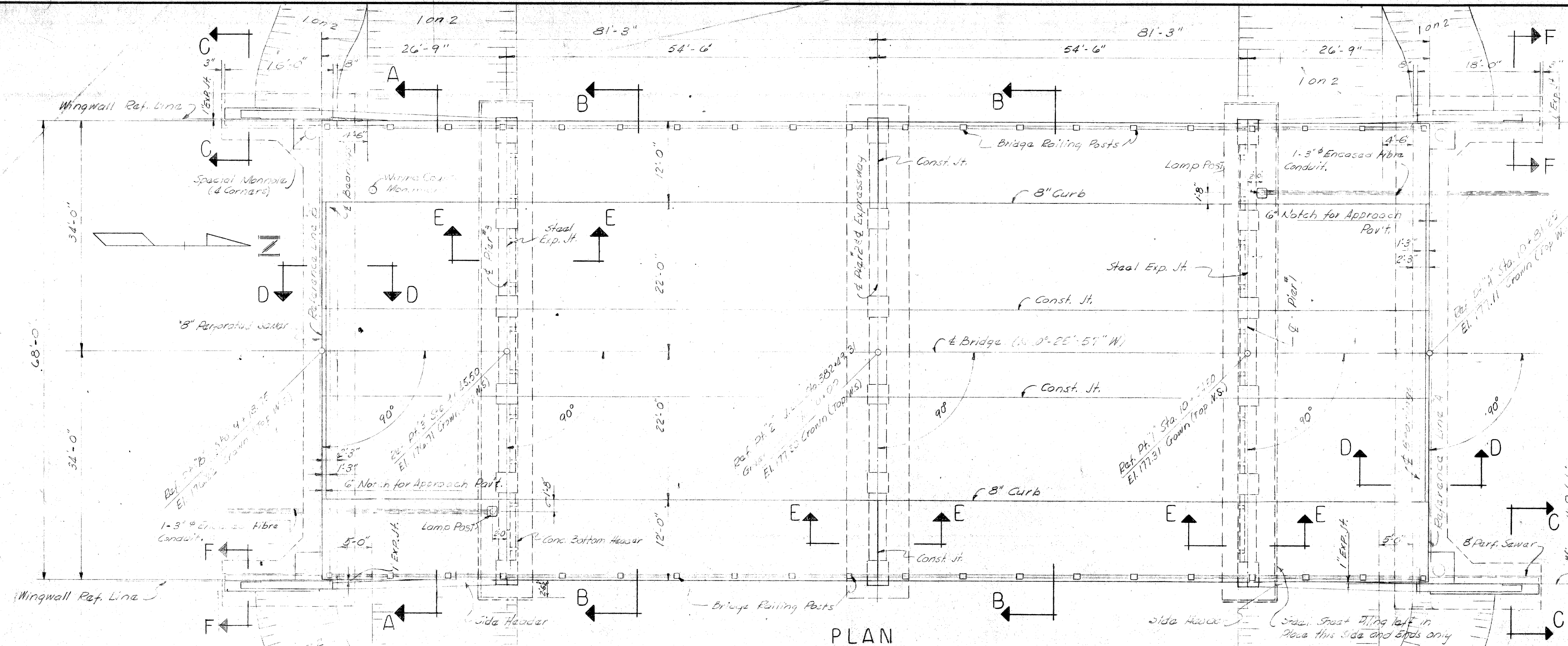
APPROVED: *J. E. McLowen*
STRUCTURAL ENGINEER

JOB No.
79-22-26 a

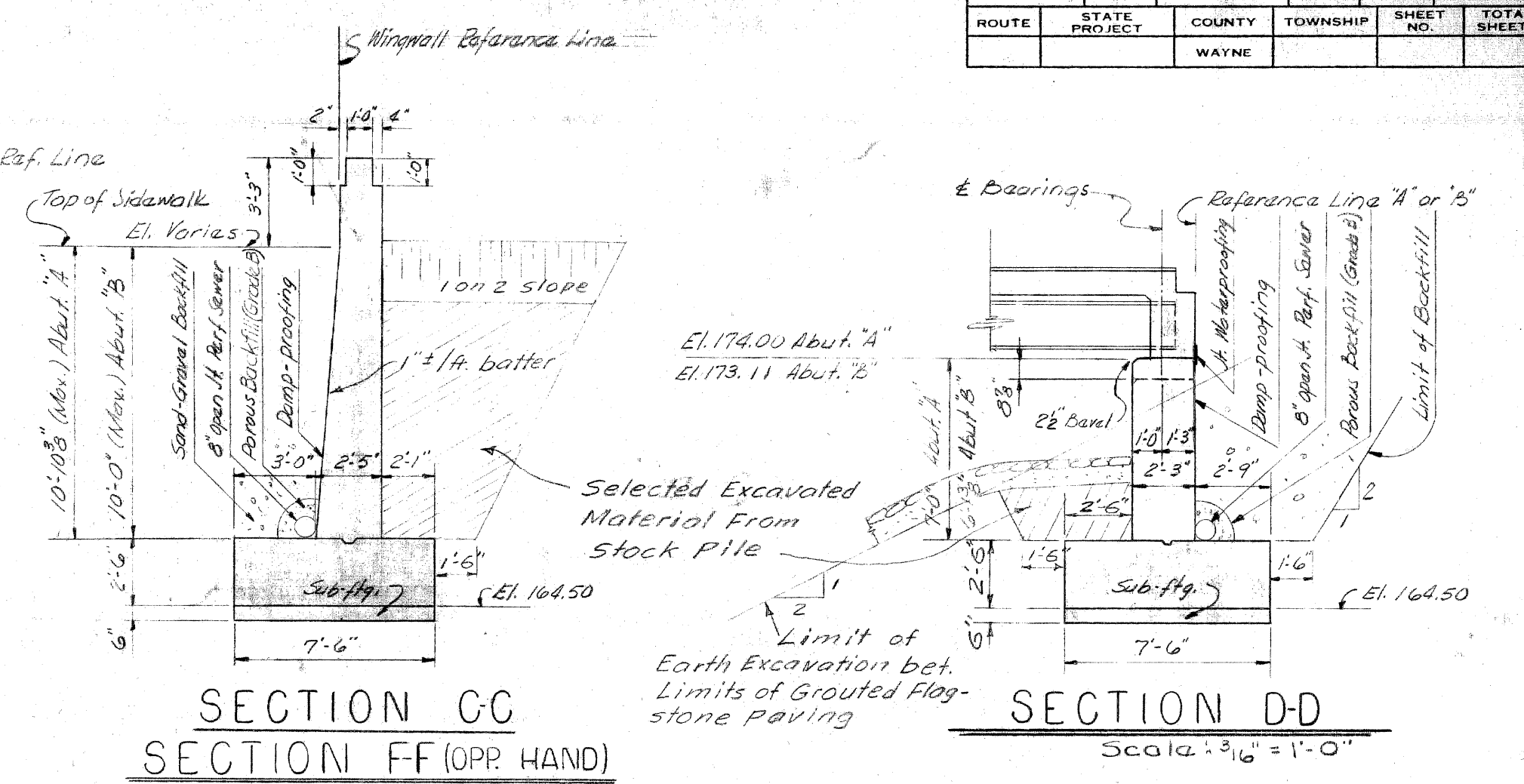
MICHIGAN DEPARTMENT OF TRANSPORTATION
GREENLAWN AVE OVER US 10
SCREENING, RAILING & OVERLAYMENT
DECK RESURFACING DETAILS

REVISIONS			
NO.	DESCRIPTION	DATE	BY

SHEET 22 OF 82112



PLAN
Scale: 3/32" = 1'-0"



SECTION CC
SECTION DD (OPP. HAND)
Scale: 3/16" = 1'-0"

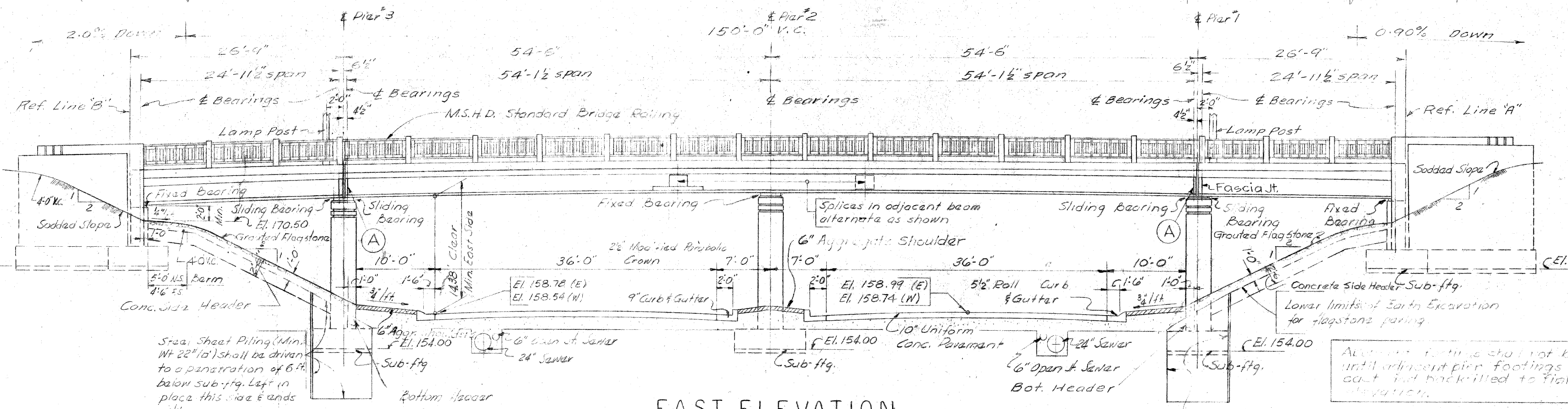
	FOOTING PRESSURES		in #1 sq. ft.		Average D.L. & L.L.
	Max. Tot. from D.L.	Allowable R=1.0	Max. Tot. from D.L. & L.L.	Allowable R=1.5	
Abutment	2715	12760	3260	13750	2240
Pier #1 & 3	1990	8010	2700	11710	2700
Pier #2	2390	7815	3000	11470	3000
Walls	3290	12760	-	-	1710

Design Specifications:
M.S.H.D.'s Specifications for the design of Highway Bridges, 1936 edition, Deflection from Live Load and Impact not more than 1/1000 of the span length.

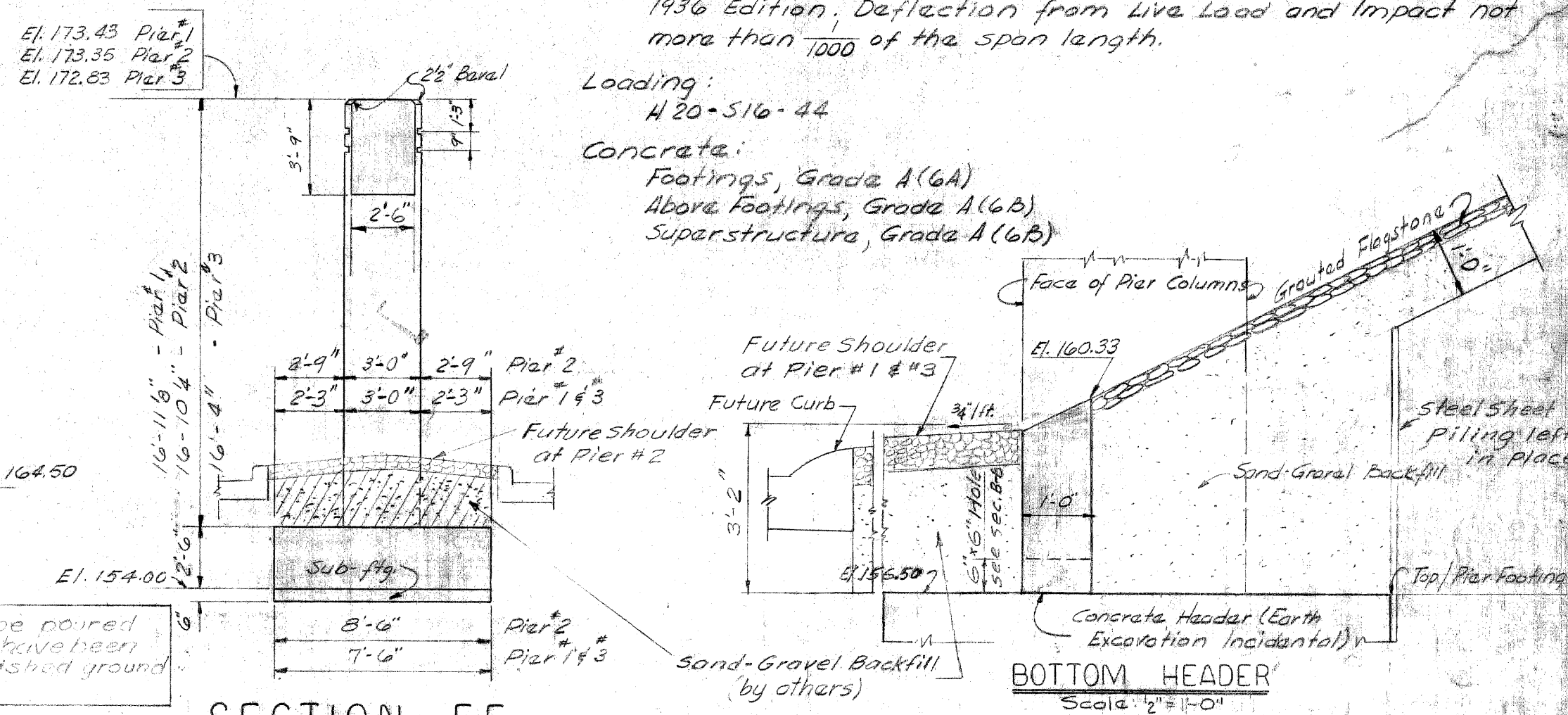
Loading:
H 20-S16-44

Concrete:
Footings, Grade A (6A)
Above Footings, Grade A (6B)
Superstructure, Grade A (6B)

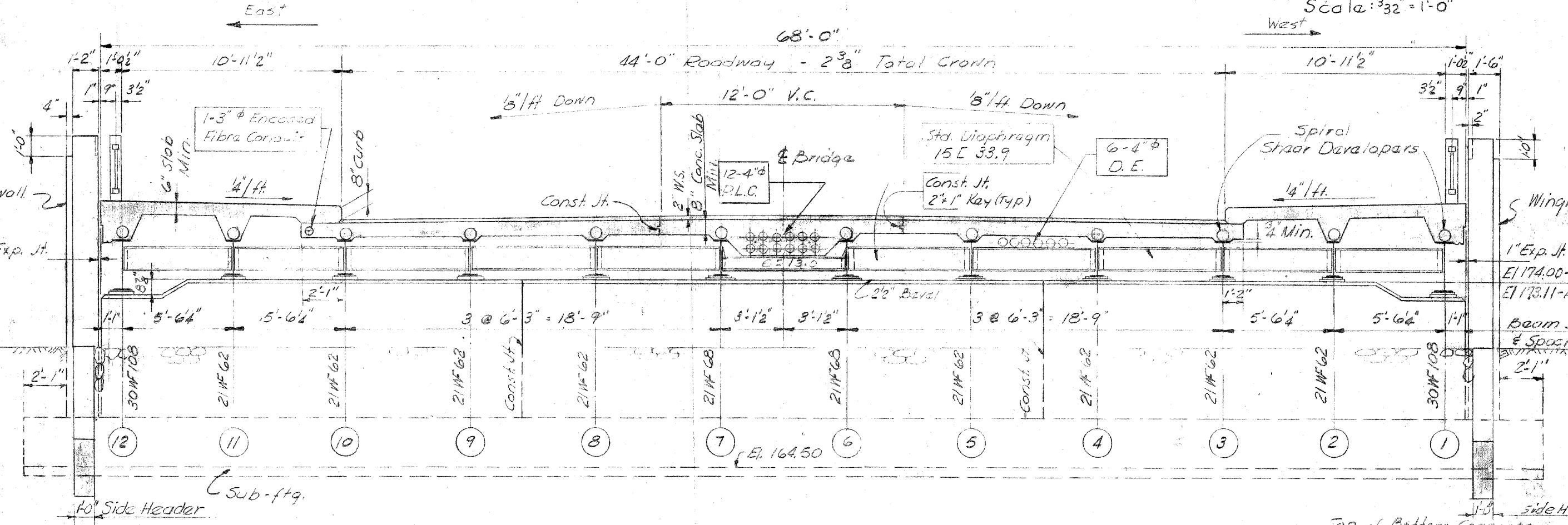
NOTE
All Expressway Railing Curves, Surfacing and Sounding Curves or grouted flagstone paving shown on this elevation will be done by others.



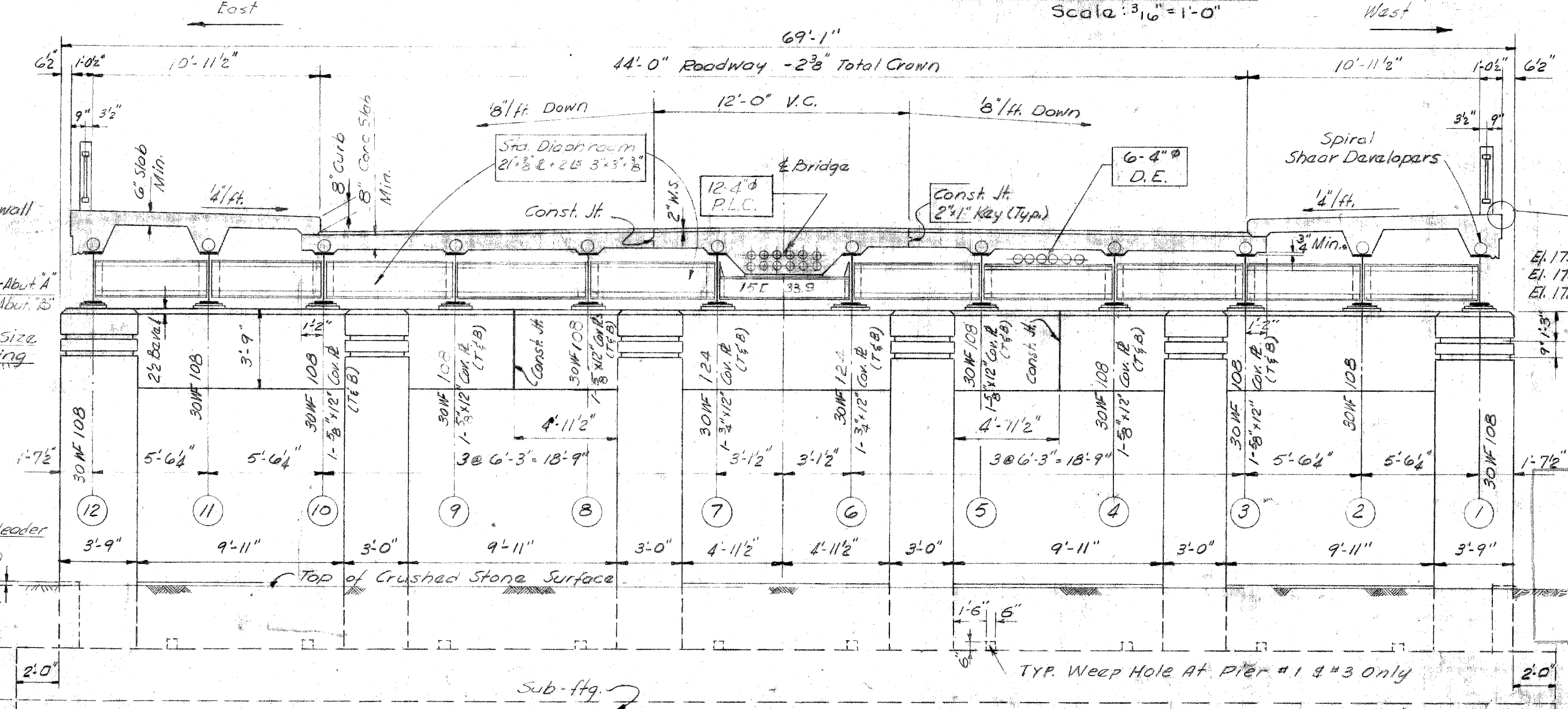
EAST ELEVATION
Scale: 3/32" = 1'-0"



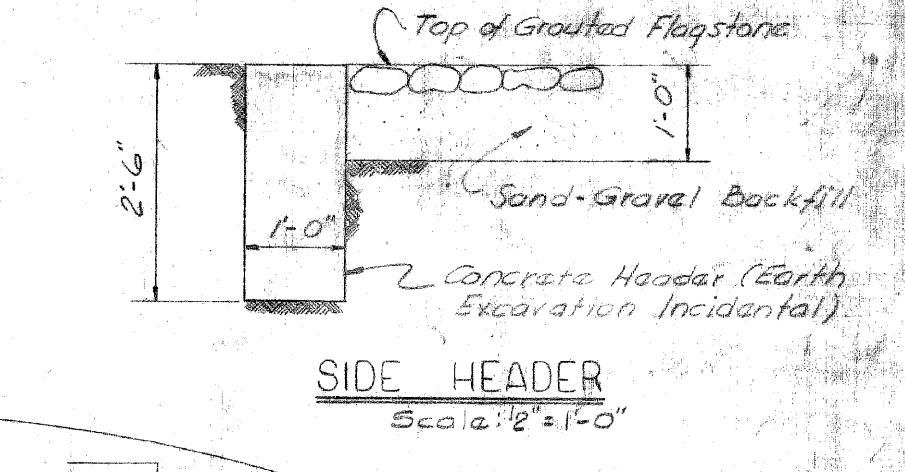
SECTION EE
BOTTOM HEADER
Scale: 3/16" = 1'-0"



SECTION A-A
Scale: 3/16" = 1'-0"



SECTION B-B
Scale: 3/16" = 1'-0"



SIDE HEADER
DETAIL A
Scale: 3/16" = 1'-0"

COPY
EXISTING BRIDGE DETAILS
(NOT FOR CONSTRUCTION)

Added Fascia ft. on Piers #1 & #3 - 3-30-54 A.W.J. / J.L.H.

REVISIONS	DATE
2) General Revision	12-9-52
1) Minor Changes	12-9-52
3) D.E. 6 Piles	10-10-53
4) Revised Plans	10-10-53
5) Y.C. Shiu	10-10-53

DRAWN BY S.B. Wikstrom	CHECKED BY C.L. Pfen	DATE 12-9-52	APPROVED <i>[Signature]</i> ENGINEER OF BRIDGES AND STRUCTURES
CORRECT	<i>[Signature]</i>	APPROVED <i>[Signature]</i> COUNTY HIGHWAY ENGINEER	

WAYNE COUNTY ROAD COMMISSIONERS
DETROIT, MICHIGAN
MICHAEL J. O'BRIEN
JOHN P. OHARA
CHARLES L. WILSON

STATE PROJECT 82-128	COUNTY JOB 844
ISSUE NO. 5	SHEET NO. 8
DATE 10-20-53	

Job 281-5

STATE FILE	BRIDGE	B 57 OF 82-22-12
	ROAD	

522 05 921/2