

QUANTITIES		
ITEM	UNIT	AMOUNT
LIGHTED ARROW, TYPE A, FURN.	EA	1
LIGHTED ARROW, TYPE A, OPER.	EA	1
BARRICADE, TYPE II, LIGHTED, FURN	EA	4
BARRICADE, TYPE II, LIGHTED, OPER	EA	2
BARRICADE, TYPE III, LIGHTED	EA	2
TEMPORARY CONCRETE BARRIER	LF	170
MINOR TRAFFIC DEVICES	LS	1
SIGN, TYPE B, TEMPORARY	SF	104

BARRICADE, TYPE III, LIGHTED WITH W10; LIGHTED ARROW, TYPE A; 2 BARRICADES, TYPE II, LIGHTED

BARRICADE AHEAD 48" x 48", SIMILAR TO W20-1
 STAGE I
 CONSTRUCT NEW PARAPET AND PROTECTIVE FENCING NORTH SIDE

TYPE III BARRICADE LIGHTED
 TEMP CONC. BARRIER

TYPE II BARRICADE LIGHTED WITH W10

STAGE II
 CONSTRUCT NEW PARAPET AND PROTECTIVE FENCING SOUTH SIDE

SIDEWALK CLOSED SIMILAR TO R11-2

F BARRICADE AHEAD SIMILAR TO W 20-1 48" x 48"

STAGE I

STAGE II

SCALE: 1" = 50'

PLANS PREPARED BY
 CITY OF DETROIT
 DEPARTMENT OF PUBLIC WORKS
 CITY ENGINEERS OFFICE

APPROVED: *T. E. McLowry*
 STRUCTURAL ENGINEER

JOB No.
 79-22-26 N

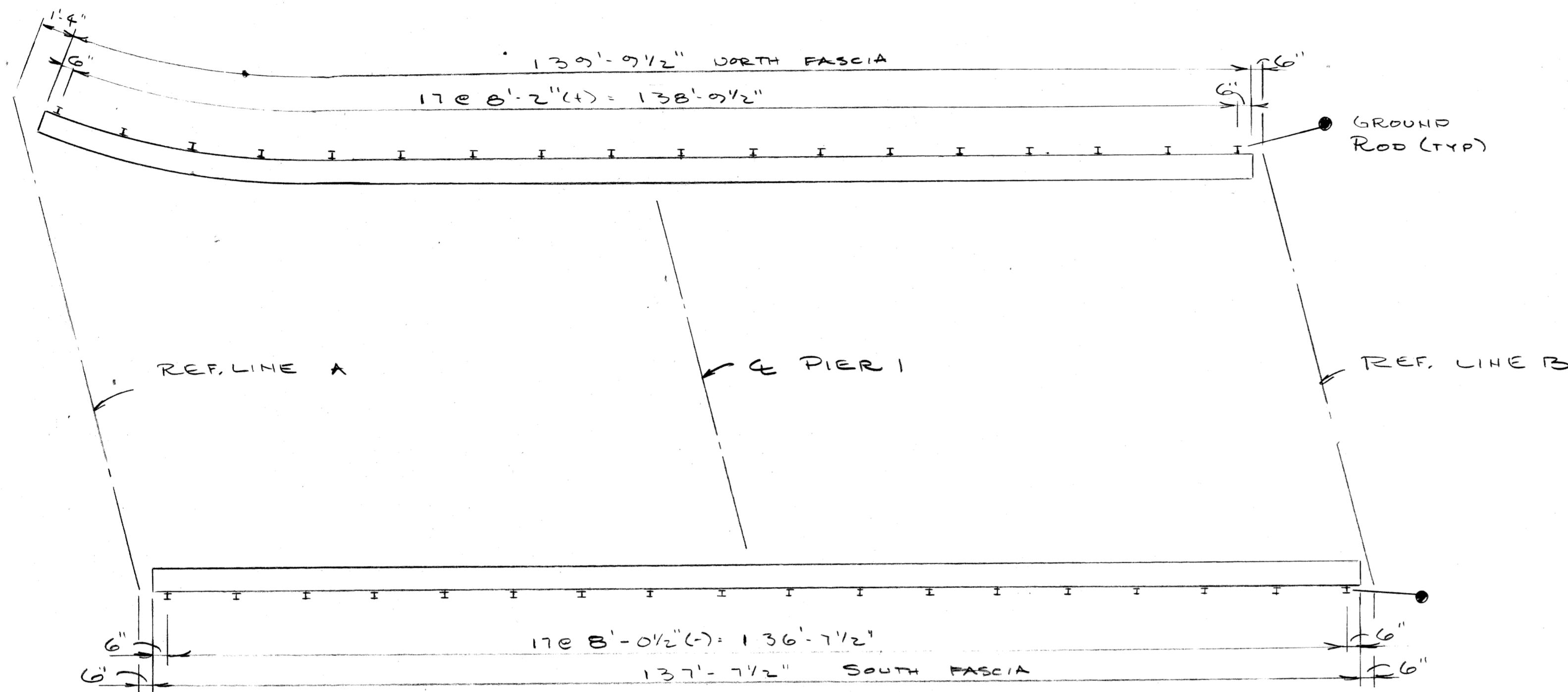
MICHIGAN DEPARTMENT OF TRANSPORTATION
 PALLISTER AVE OVER US 10
 SCREENING AND RAILING REPLACEMENT
 STAGING AND CONSTRUCTION SIGNING

REVISIONS			
NO.	DESCRIPTION	DATE	BY

SQUAD BOSS	APPELBERG	11-24-81
DRAWN BY	DAK	9-24-81
CHECKED BY		
SHEET		

S 03 OF 82112

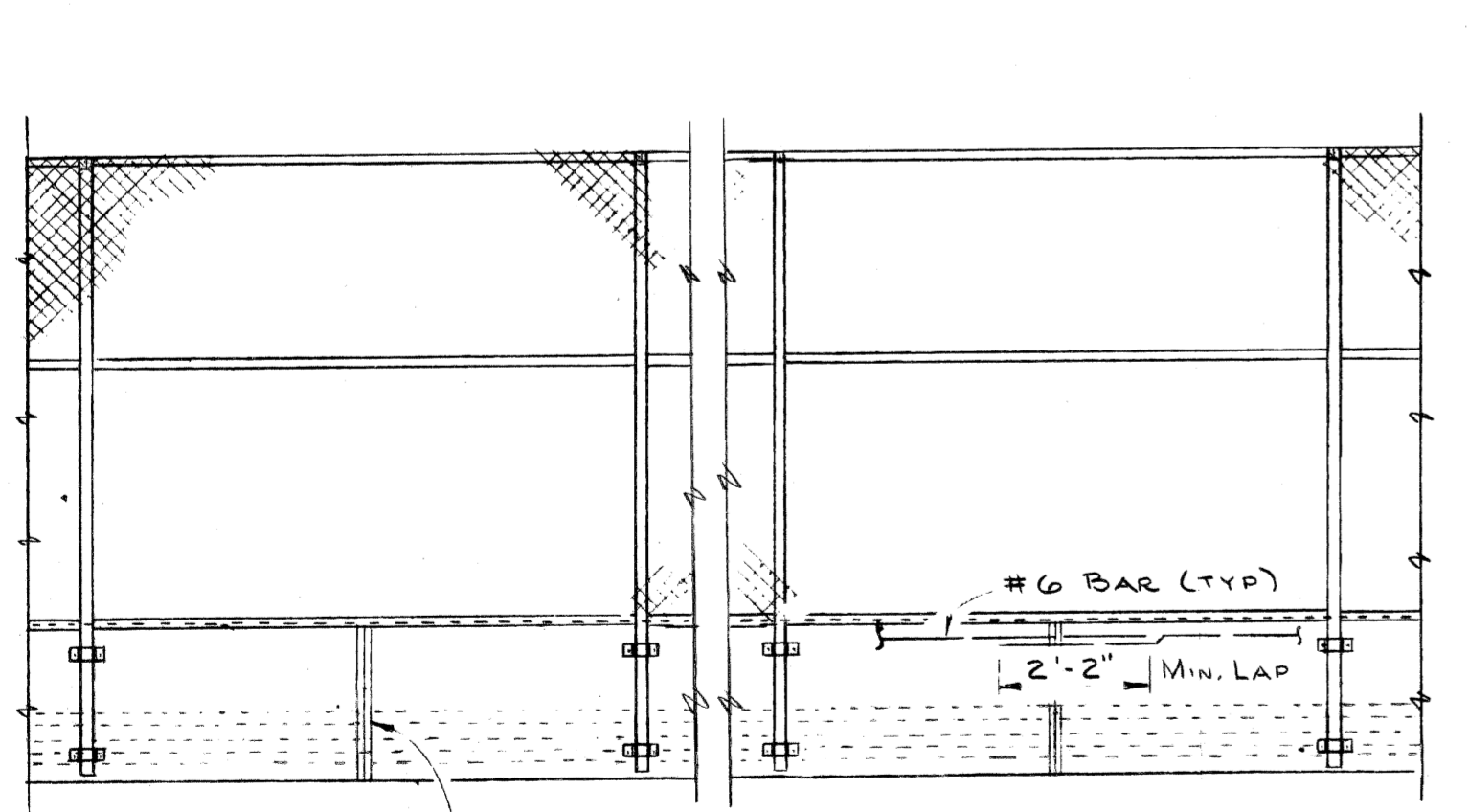
QUANTITIES		
ITEM	UNIT	AMOUNT
BRIDGE RAILING-SOLID PARAPET TYPE (MODIFIED)	L.F.	277
PEDESTRIAN FENCING-STRUCTURES	SF	2203
ELECTRICAL GROUNDING SYSTEM	EA	2
EPOXY ANCHORED BARS	EA	374



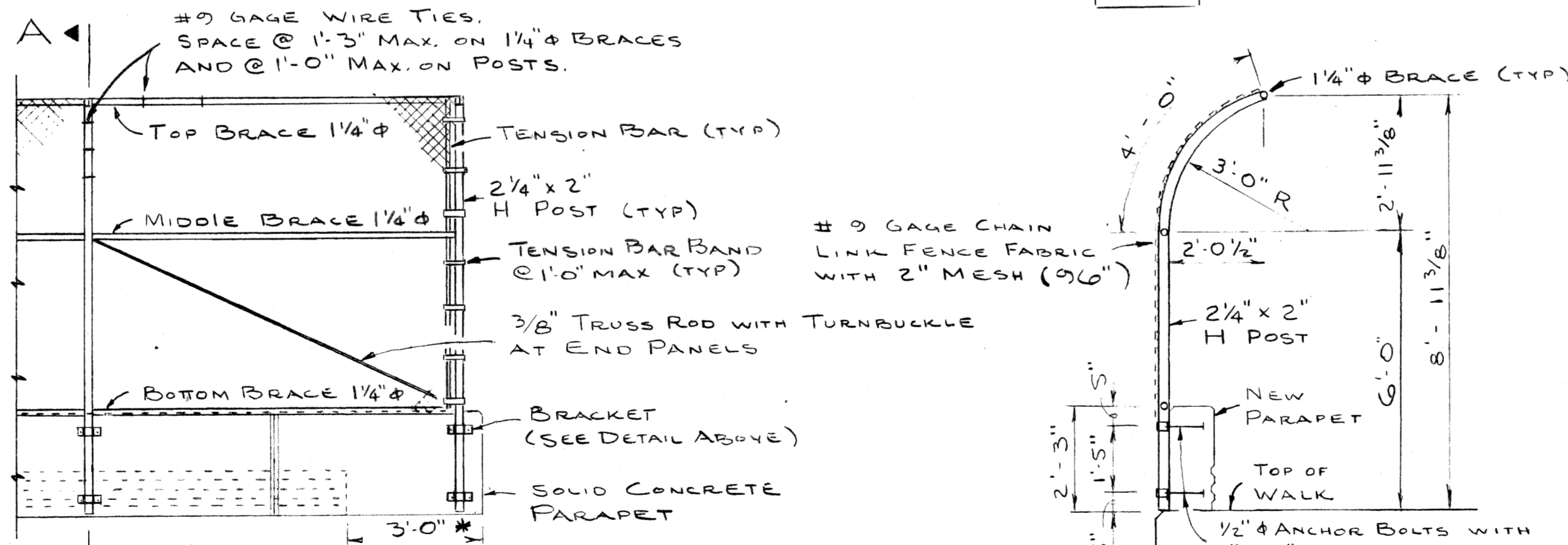
PLAN
NTS

DIMENSIONS ARE ALONG THE OUTSIDE FACE OF THE NEW PARAPET.

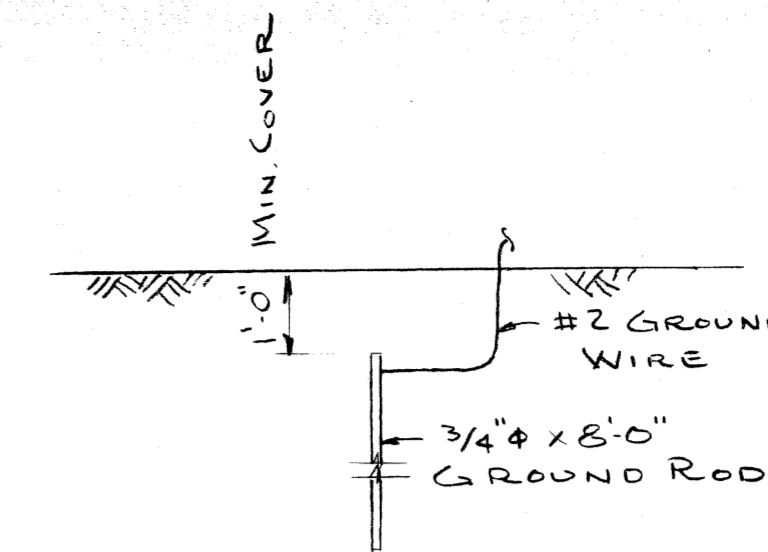
STEEL REINF. - EPOXY COATED					
LOCATION	MARK	SIZE	LENGTH	NO REQ	TOTAL
ALL SPANS	A101	#6	2'-6"	187	702
ALL SPANS	A102	#6	2'-9"	187	772
NORTH	A103	#6	36'-6"	24	1316
SOUTH	A104	#6	36'-0"	24	1298
					4088



TYPICAL ELEVATION

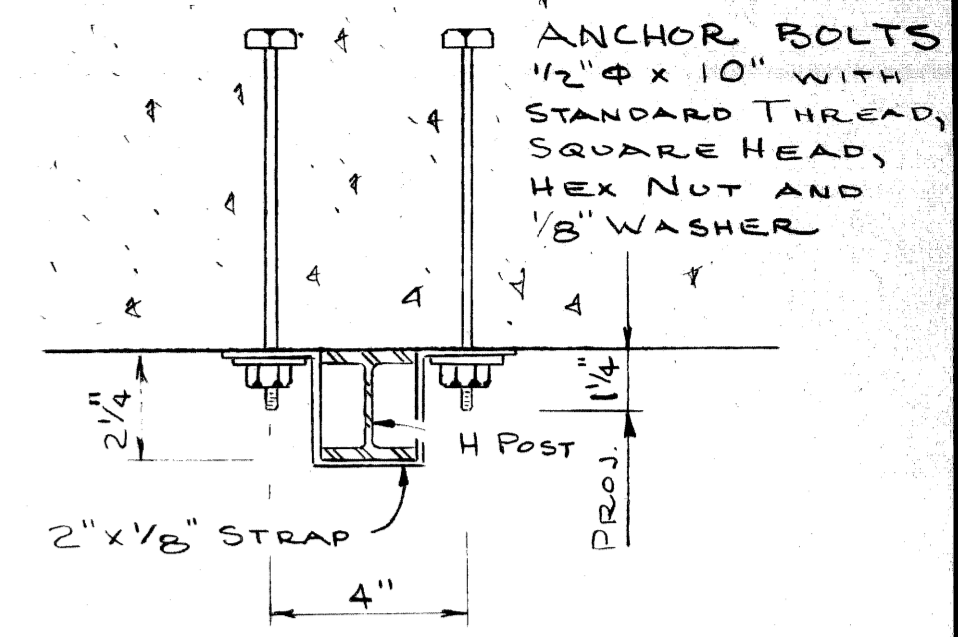


SECTION A-A

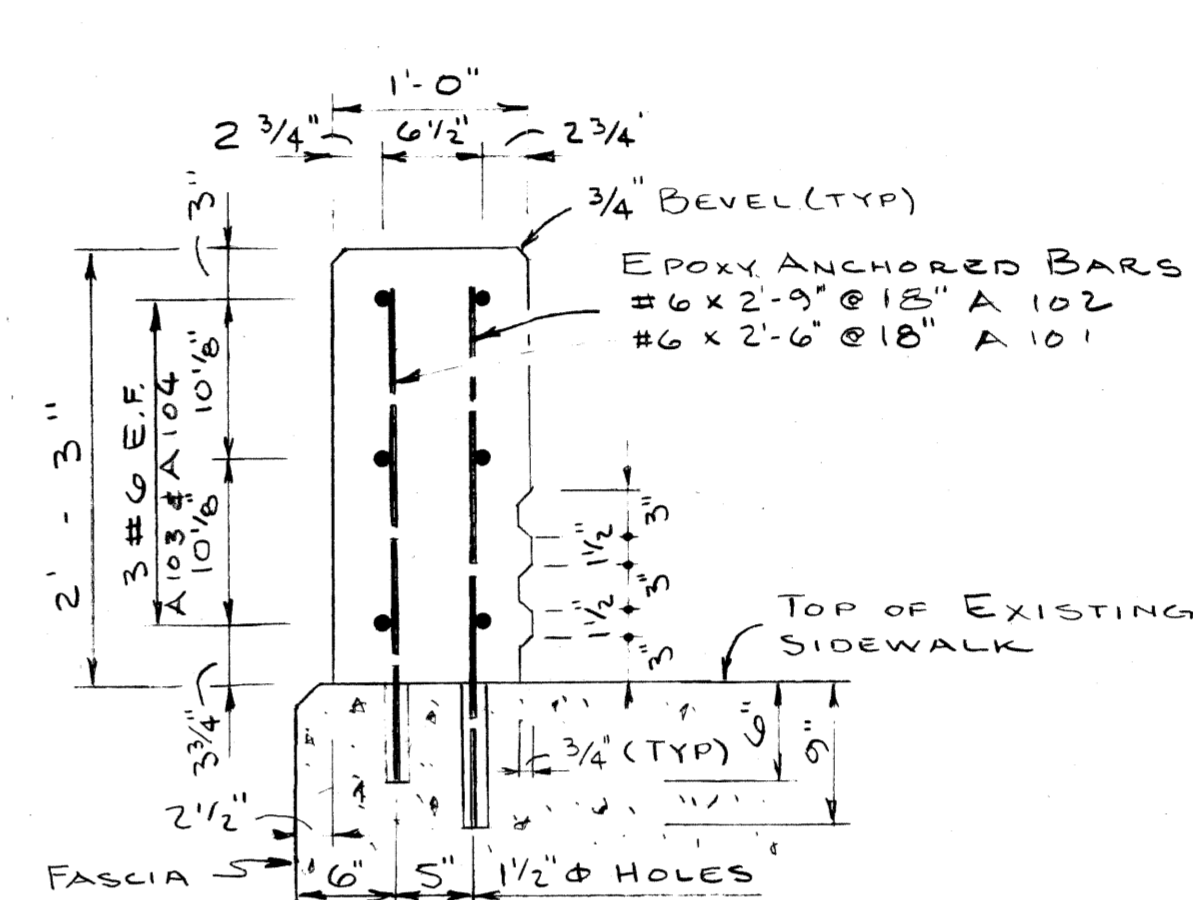


1. ALL UNDERGROUND CONNECTIONS SHALL BE CALDWELDED, THERMITE WELD, GAS OR ARC WELD.
2. EXPOSED CONNECTIONS MAY BE SPLIT BOLT OR CLAMP TYPE.
3. GROUND WIRE SHALL BE #2 AWG STRANDED SOFT DRAWN COPPER WIRE.

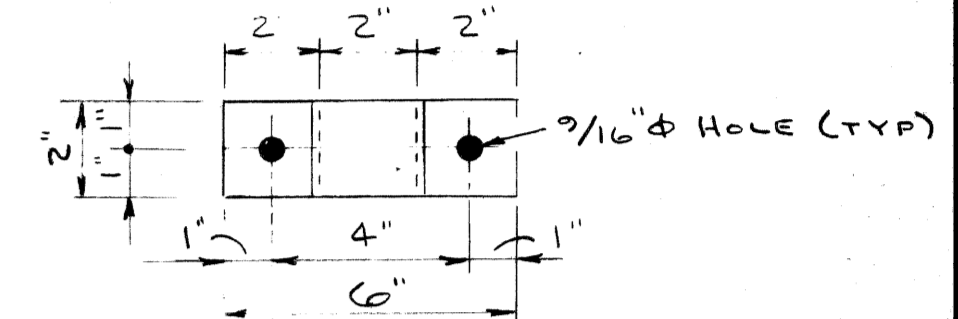
GROUNDING DETAIL



BRACKET DETAIL



BRIDGE RAILING - SOLID PARAPET TYPE (MODIFIED)



STRAP DETAIL

RAILING AND FENCING NOTES

- All work shall conform to MDOT STANDARD SPECIFICATIONS FOR HIGHWAY CONSTRUCTION, 1979 EDITION.
- All FABRIC FOR CHAIN LINK FENCE SHALL BE FURNISHED WITH KNUCKLING AT BOTH SELVAGES.
- THE POSTS SHALL BE 2 1/4" x 2" GALVANIZED H POSTS WEIGHING 4.1 P.L.F. ROUND POSTS HAVING A 2 1/8" O.D. WEIGHING 5.79 P.L.F. GALVANIZED MAY BE USED WITH SIMILAR CONNECTION DETAILS.
- THE NOMINAL 1/4" Δ BRACES SHALL BE 1 1/8" Δ O.D. STEEL PIPE OR TUBING WEIGHING 2.27 P.L.F. GALVANIZED.
- All POSTS AND TUBING SHALL BE FURNISHED WITH THE MANUFACTURERS STANDARD CONNECTIONS AND ITS MINIMUM WEIGHT SHALL BE WITHIN 5% OF THAT SPECIFIED.
- POSTS AND TUBING SHALL BE BENT IN THE SHOP AS SHOWN ON THE PLANS.
- All COMPONENTS ARE TO BE GALVANIZED. BOLTS, NUTS AND WASHERS ARE TO BE GALVANIZED IN ACCORDANCE WITH ASTM A 153.
- TENSION BARS SHALL BE 3/4" x 1/4" GALVANIZED STEEL.
- FENCE FABRIC SHALL BE GALVANIZED, #9 GAGE WITH A 2" MESH.
- CONTRACTOR SHALL VERIFY FIELD CONDITIONS BEFORE FABRICATION.
- CARE IS TO BE TAKEN IN PLACING ANCHOR BOLTS AND BRACKETS SO AS TO INSURE THAT THE BRACKETS HOLD THE POSTS FIRMLY AGAINST CONCRETE, SHIM IF NECESSARY.
- PEDESTRIAN FENCING-STRUCTURES SHALL INCLUDE THE FABRIC, POSTS, BRACES, ANCHOR BOLTS, BRACKETS AND ALL SUITABLE CONNECTIONS AND FITTINGS.
- BRIDGE RAILING-SOLID PARAPET TYPE (MODIFIED) SHALL INCLUDE ALL MATERIALS FOR THE CONC. PARAPET INCLUDING CONCRETE, REINF. STEEL AND REMOVAL OF EXISTING RAILINGS.
- WHERE SIGNS MOUNTED ON BRIDGE FASCIAS INTERFERE WITH CONSTRUCTION, THEY MAY BE REMOVED AND RESET AT THE CONTRACTORS EXPENSE.

MICHIGAN DEPARTMENT OF TRANSPORTATION
PALLISTER AVE OVER US 10
SCREENING AND RAILING REPLACEMENT
SOLID PARAPET AND SCREENING DETAILS

PLANS PREPARED BY
CITY OF DETROIT
DEPARTMENT OF PUBLIC WORKS
CITY ENGINEERS OFFICE

APPROVED *TEOM SOUWAN*
STRUCTURAL ENGINEER

JOB No. 79-22-26 N

REVISIONS			
NO.	DESCRIPTION	DATE	BY

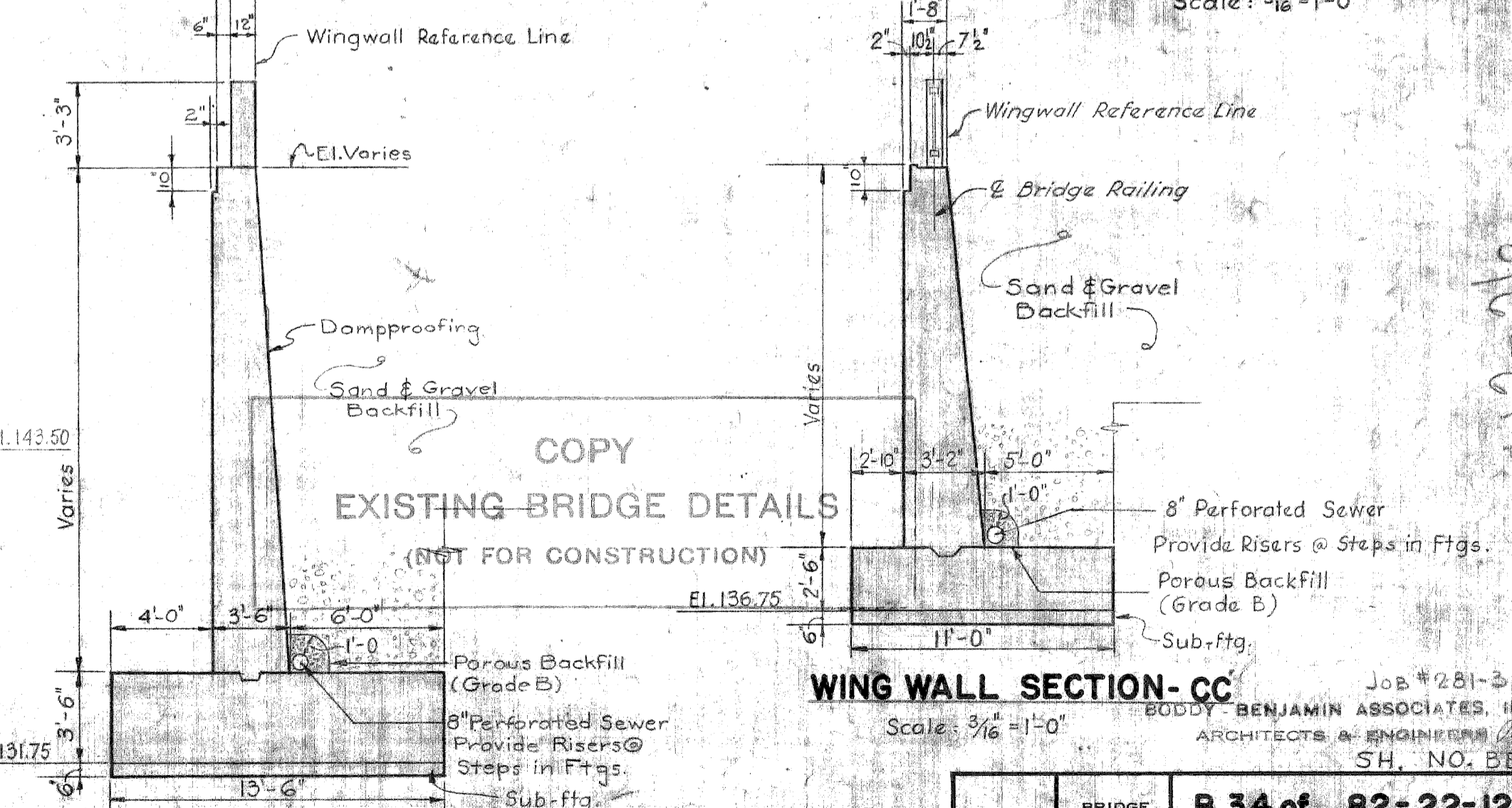
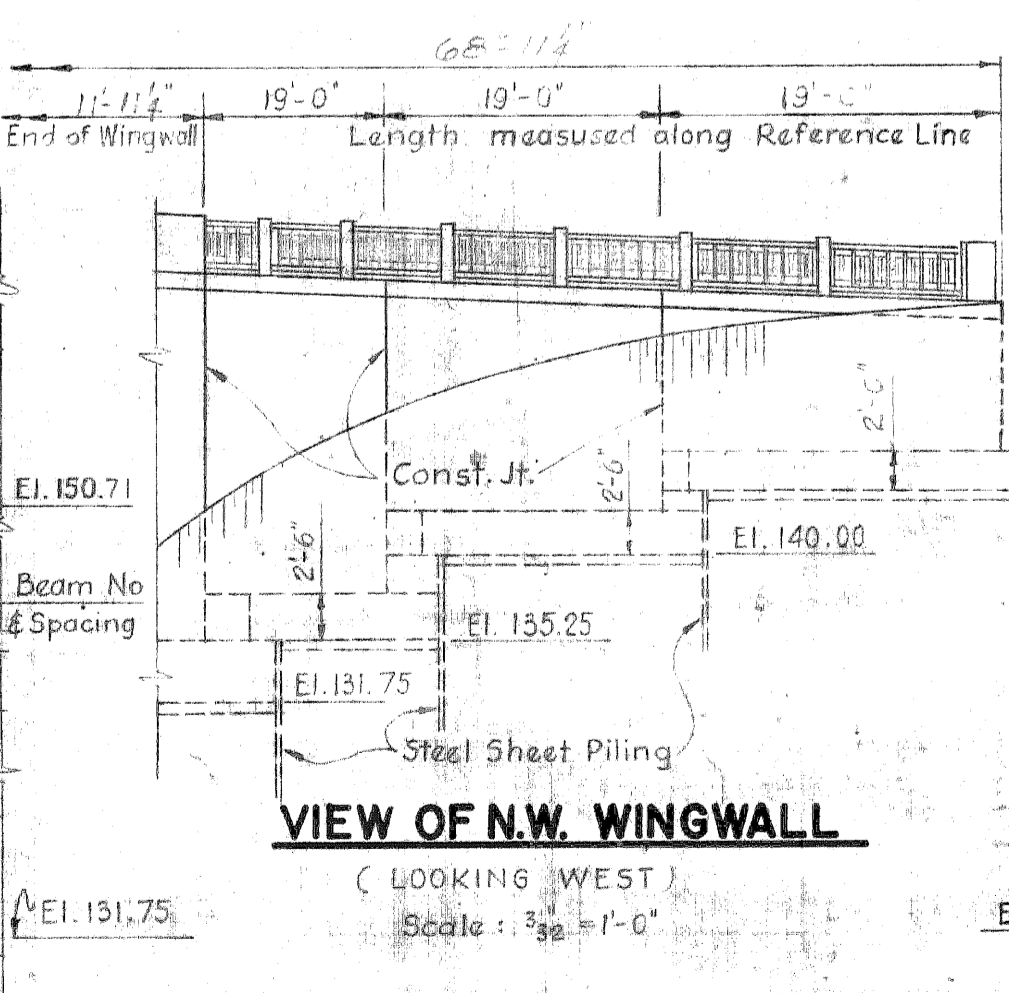
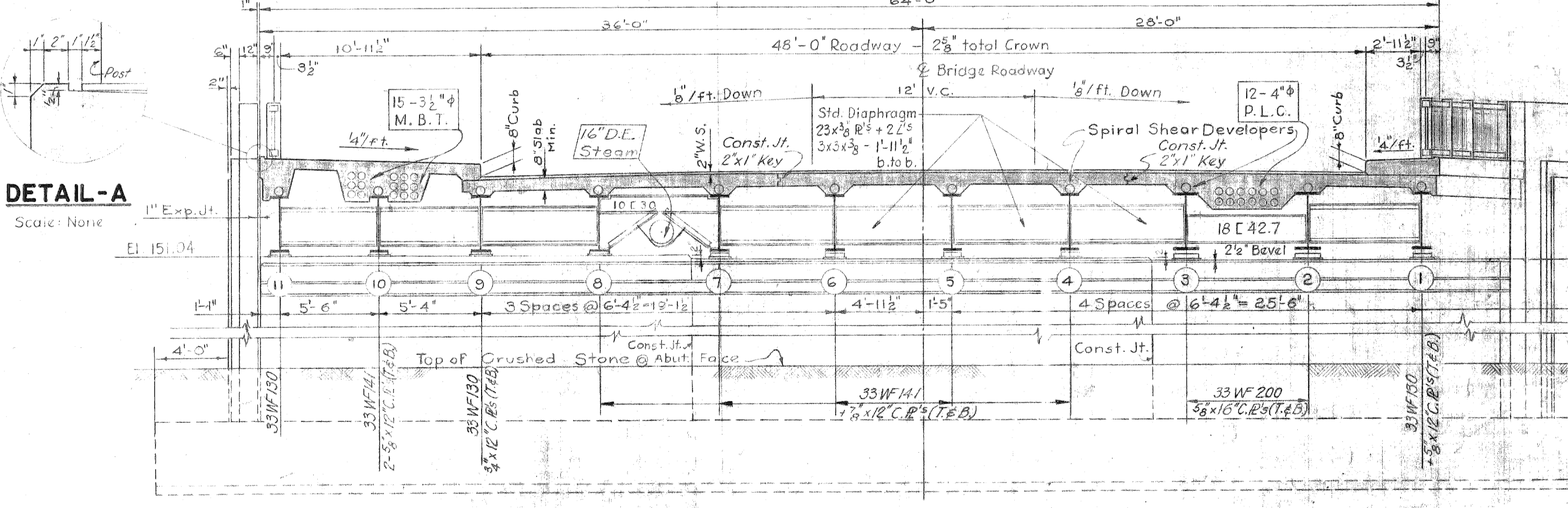
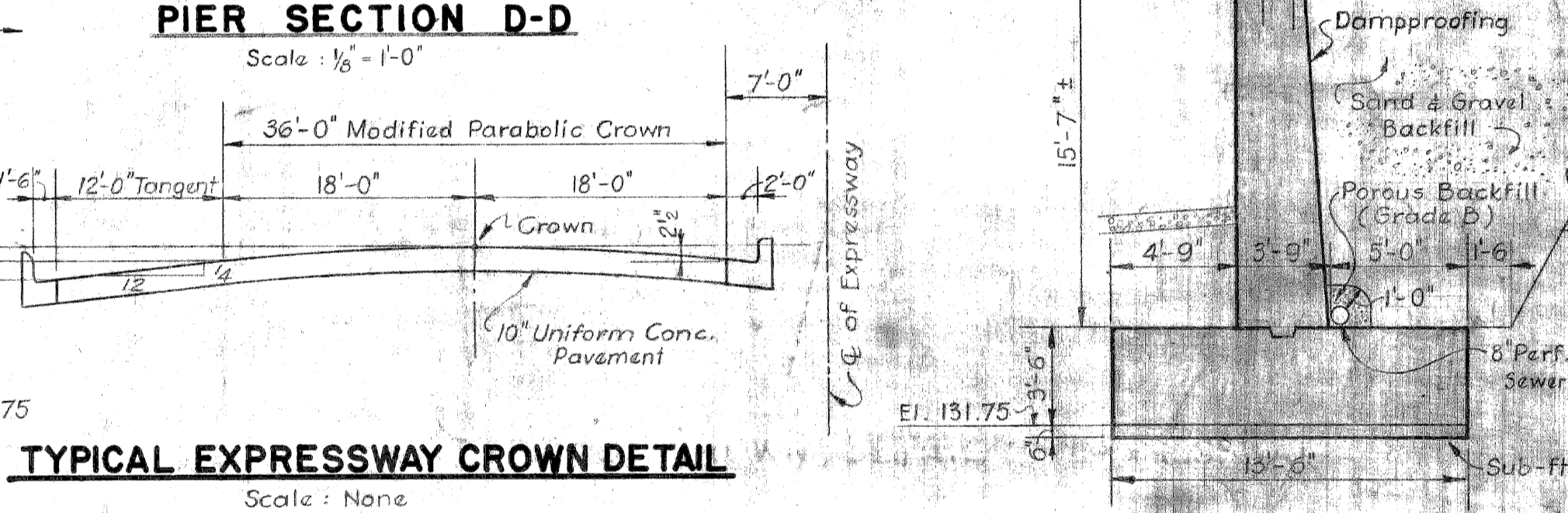
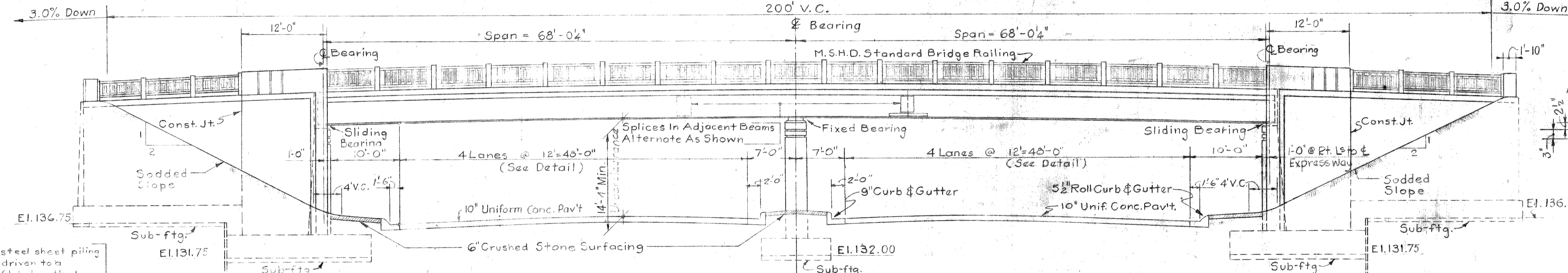
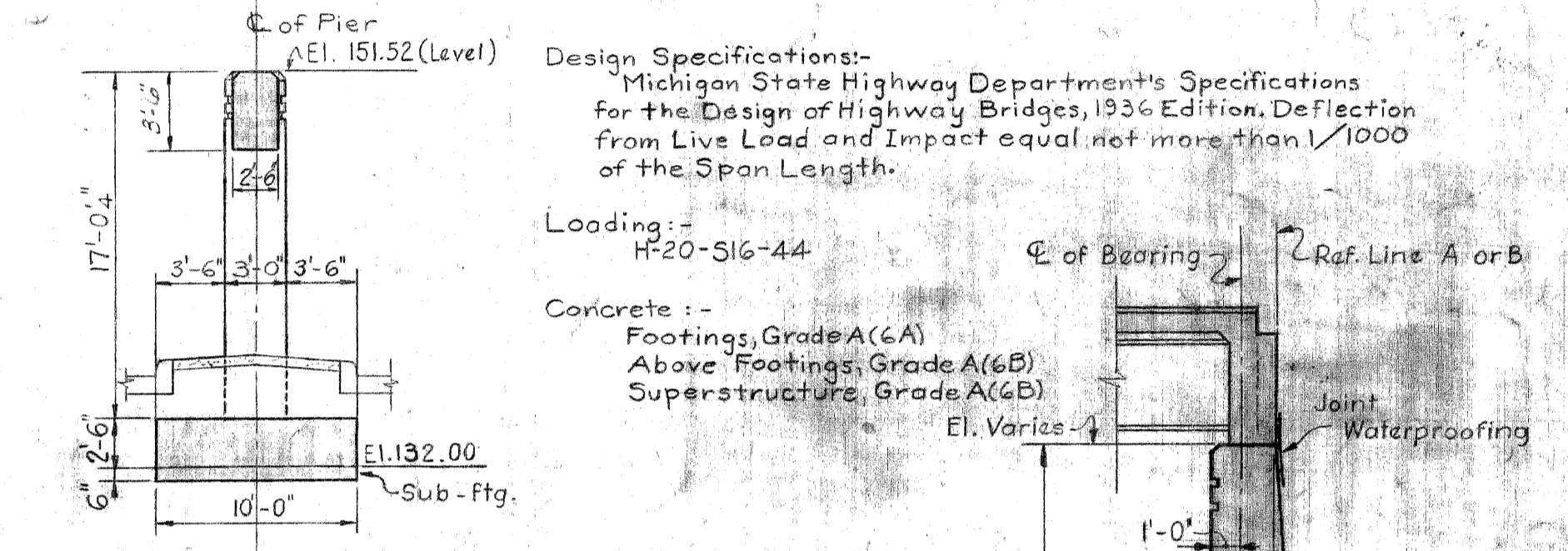
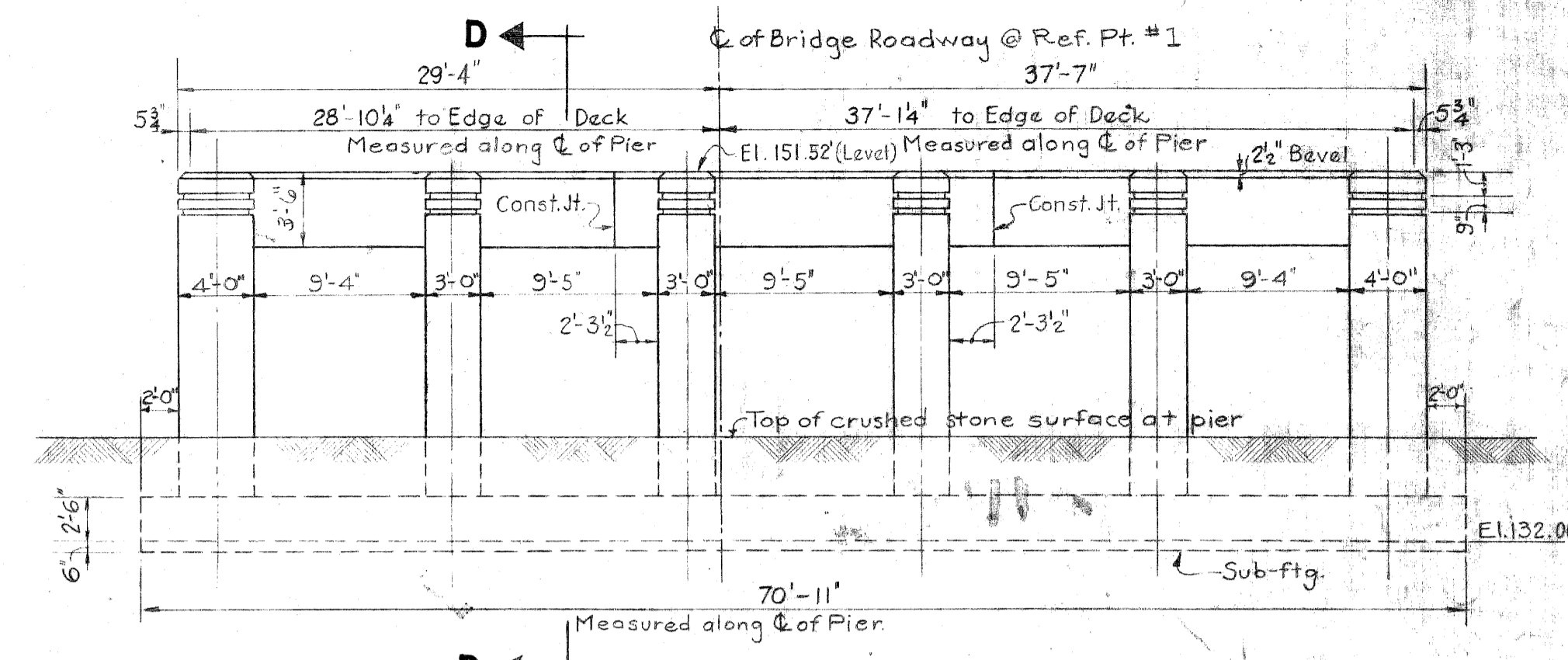
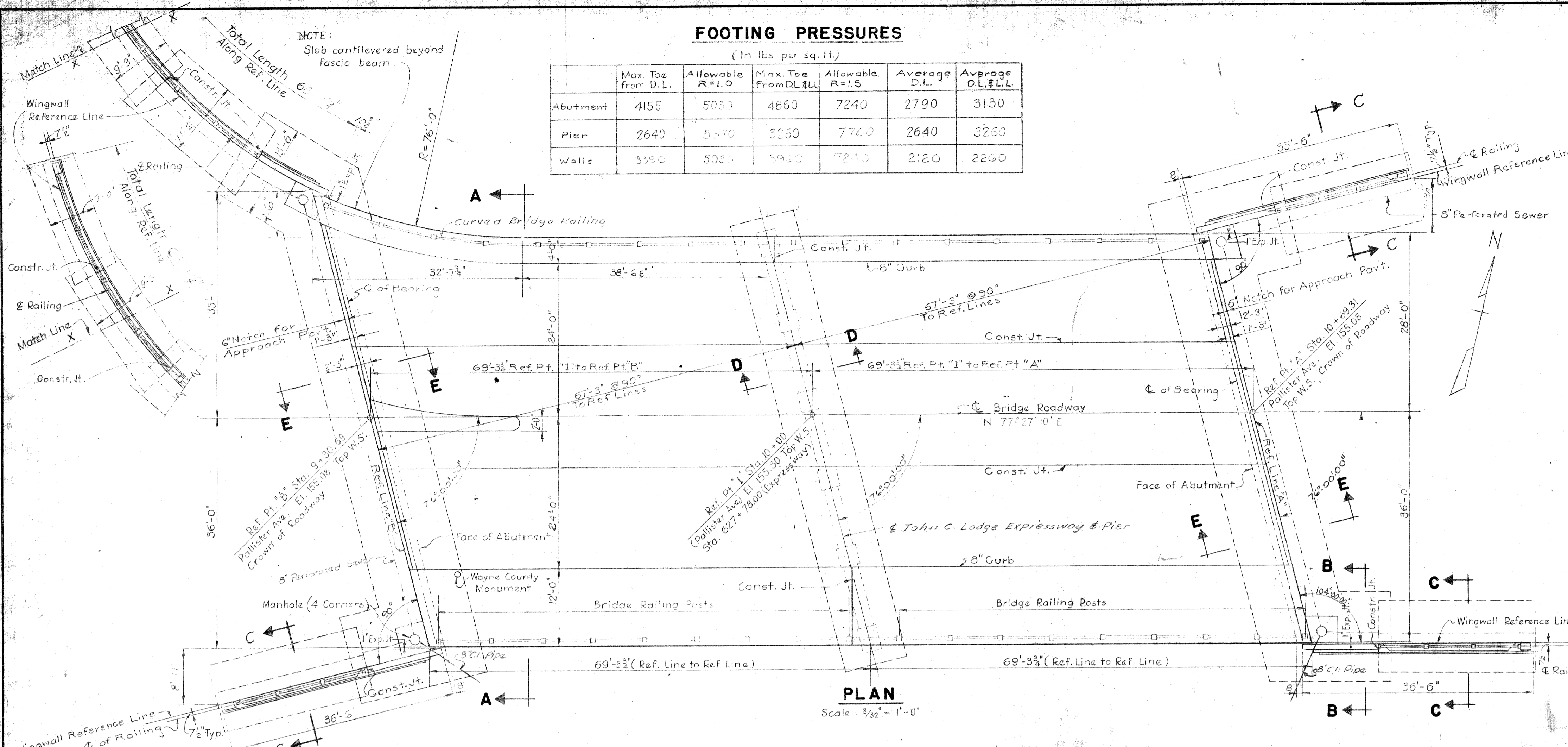
SQUAD BOSS	A. FELBERG	9-24-81
DRAWN BY	RAK	9-24-81
CHECKED BY		
SHEET		
S 03 OF 82112		

FED. ROAD DIST. NO.	STATE	PROJECT NO.	FISCAL YEAR	SHEET NO.	TOTAL SHEETS
	MICH.				
ROUTE	STATE PROJECT	COUNTY	TOWNSHIP	SHEET NO.	TOTAL SHEETS
		WAYNE			

FOOTING PRESSURES

(In lbs. per sq. ft.)

	Max. Toe from D.L.	Allowable R=1.0	Max. Toe from D.L. & L.	Allowable R=1.5	Average D.L.	Average D.L. & L.
Abutment	4155	5033	4660	7240	2790	3130
Pier	2640	5370	3230	7760	2640	3260
Walls	3390	5038	3930	7243	2120	2260



WING WALL SECTION C-C showing a cross-section of the wingwall with dimensions and reinforcement. Scale: 3/16" = 1'-0".

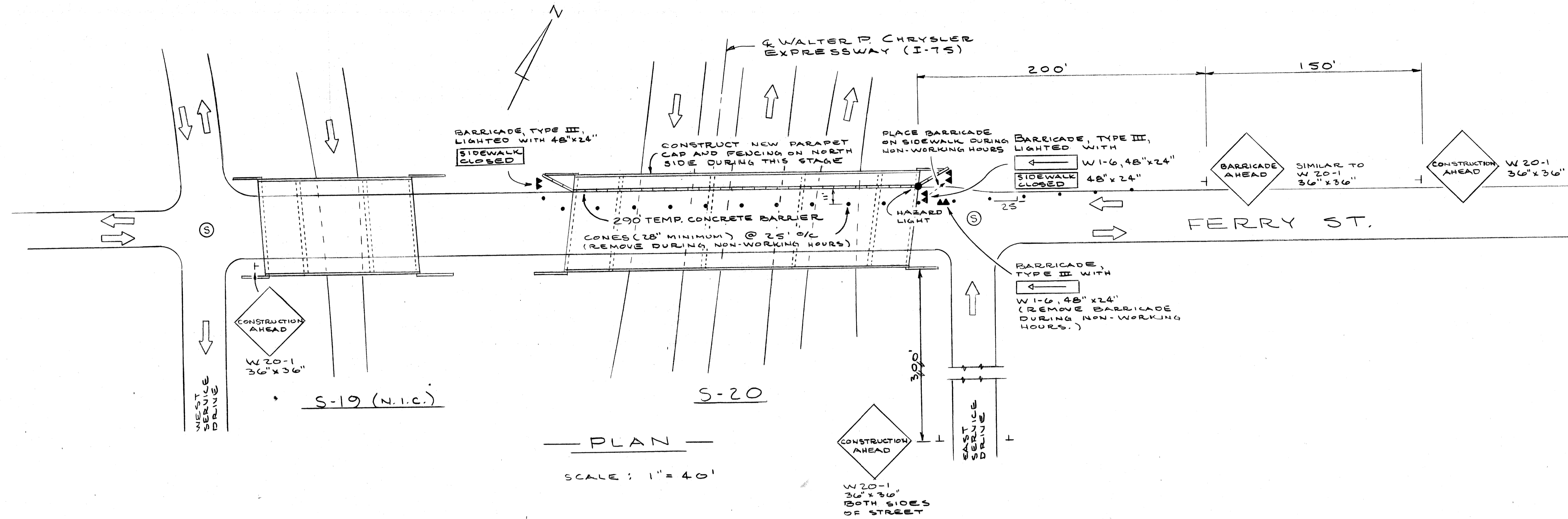
REVISIONS	DRAWN BY	CHECKED BY	DATE	APPROVED
1) Revised Gravel Material Dimensions 1/15/56	W. J. O'Brien	C. L. Wilson	6-30-52	Michael J. O'Brien
2) Minor Changes 4-21-53				
3) Minor Changes 2-9-53				
4) Minor Changes 4-21-53				

APPROVED: *Michael J. O'Brien*
 ENGINEER OF BRIDGES AND STRUCTURES
 COUNTY HIGHWAY ENGINEER

BOARD OF WAYNE COUNTY ROAD COMMISSIONERS
 DETROIT, MICHIGAN
 JOHN P. O'HARA
 CHARLES L. WILSON

JOHN C. LODGE EXPRESSWAY
 PALLISTER AVENUE CROSSING
 GENERAL PLAN OF STRUCTURE
 STATE PROJECT 82-128
 COUNTY JOB 866
 ISSUE NO. 5
 DATE 7-27-52

503 05 82112



PLAN
SCALE: 1" = 40'

NOTES

THE PLAN SHOWS THE SIGNING FOR CONSTRUCTION OF THE NEW PARAPET CAP AND PROTECTIVE FENCING ON THE NORTH SIDE OF THE BRIDGE. REVERSE THE PROCEDURE WHEN WORKING ON THE SOUTH SIDE OF THE BRIDGE.

REMOVE THE CONES AND BARRICADES INTERFERING WITH TRAFFIC, DURING NON-WORKING HOURS AS SHOWN ON THE PLAN.

ALL SIGNS SHALL BE B/O, TYPE B.

MAINTAIN A MINIMUM OF ONE LANE OF TRAFFIC IN EACH DIRECTION AT ALL TIMES.

QUANTITIES		
ITEM	UNIT	AMOUNT
BARRICADE, TYPE III, LIGHTED	EA	2
TEMPORARY CONCRETE BARRIER	L.F.	290
SIGN, TYPE B, TEMPORARY	SF	77
BARRICADE, TYPE III	EA	1
HAZARD LIGHT, FURNISHED	EA	1
HAZARD LIGHT, OPERATED	EA	1
MINOR TRAFFIC DEVICES	L.S.	1

PLANS PREPARED BY
CITY OF DETROIT
DEPARTMENT OF PUBLIC WORKS
CITY ENGINEERS' OFFICE

T. E. McEwan
STRUCTURAL ENGINEER

JUDG NO.
79-22-26M

MICHIGAN DEPARTMENT OF TRANSPORTATION
FERRY ST. OVER I - 75
PARAPET AND SCREENING
SIGNING DETAILS

REVISIONS			
NO.	DESCRIPTION	DATE	BY

SQUAD BOSS: A. FREIDEN 4-24-81
DRAWN BY: R. K. 4-24-81
CHECKED BY: C. S. 4-24-81
SHEET: 2 OF 2
S-20 OF 82251