

QUANTITIES		
ITEM	UNIT	AMOUNT
PEDESTRIAN FENCING, STRUCTURES	S.F.	4284
ELECTRICAL GROUNDING SYSTEM	L.S.	1
STEEL REINFORCEMENT, EPOXY COATED	LBS	2367
1/2 INCH EPOXY ANCHORED BARS	EA	684
CONCRETE PARAPET CAP	C.Y.	13

FENCING NOTES

All work shall conform to MDOT STANDARD SPECIFICATIONS FOR CONSTRUCTION, 1979 EDITION

All fence fabric shall be galvanized, #9 gage with a 2" mesh and with knuckling at the bottom selvage.

The posts shall be 2 1/4" x 2" galvanized H-Posts weighing 4.1 p.l.f. Round Posts having a 2 7/8" o.d. weighing 5.79 p.l.f. galvanized may be used with similar connection details.

The nominal 1/4" φ braces shall be 1 5/8" φ o.d. steel pipe or tubing weighing 2.27 p.l.f. galvanized.

All posts and tubing shall be furnished with the manufacturers standard connections and its minimum weight shall be within 5% of that specified.

Posts and tubing shall be bent in the shop as shown on the plans.

All components are to be galvanized. Bolts, nuts and washers are to be galvanized in accordance with ASTM A 153.

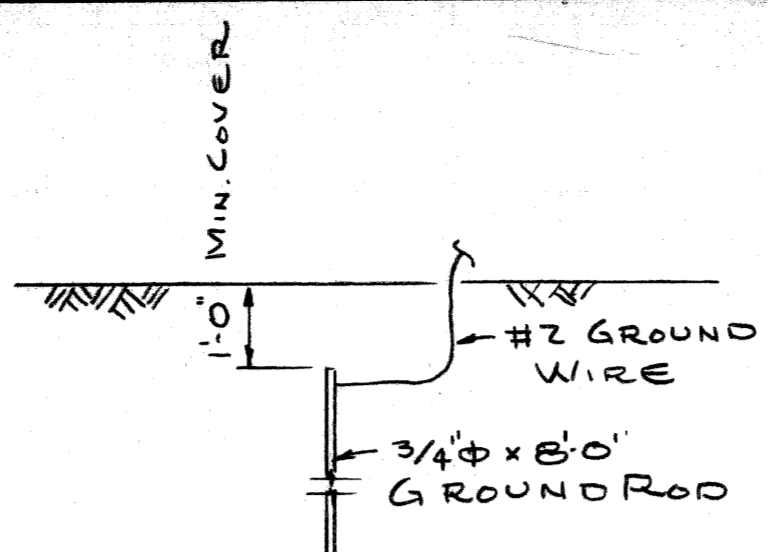
Tension bars shall be 3/4" x 1/4" galvanized steel.

Contractor shall verify field conditions before fabrication.

Care is to be taken in placing expansion bolts and brackets so as to insure that the brackets hold the posts firmly against concrete. Shim if necessary.

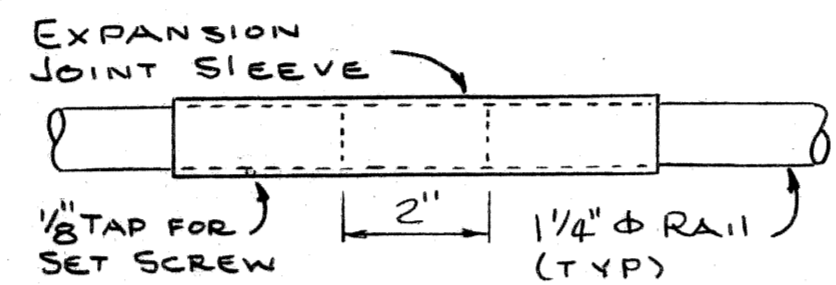
PEDESTRIAN FENCING STRUCTURES shall include the fabric, posts, braces, expansion bolts, brackets and all suitable connections and fittings.

1/2" φ expansion bolts shall be Phillips red head galvanized wedge anchors WS 1242 G or approved equal.

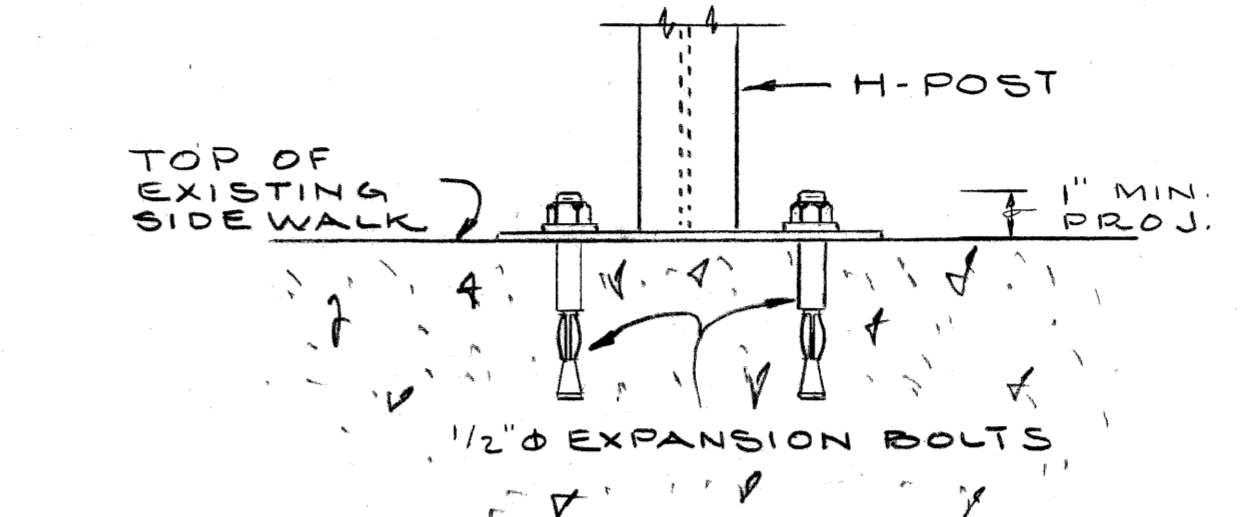
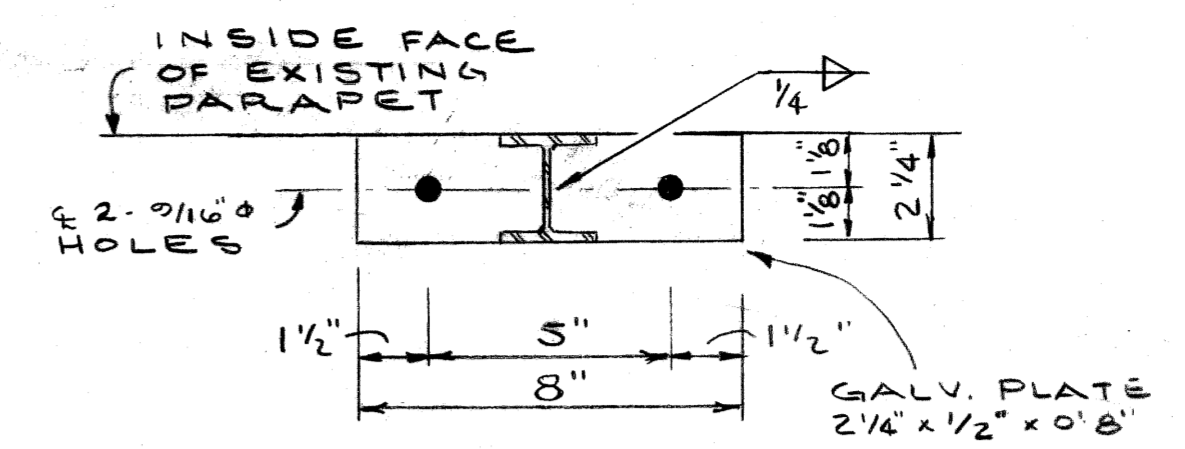


1. All underground connections shall be coldweld, thermite weld, gas or arc weld.
2. Exposed connections may be split bolt or clamp type.
3. Ground wire shall be #2 AWG stranded soft drawn copper wire.
4. Resistance to ground for any continuous section of fence shall not exceed 10 ohms per ground rod.

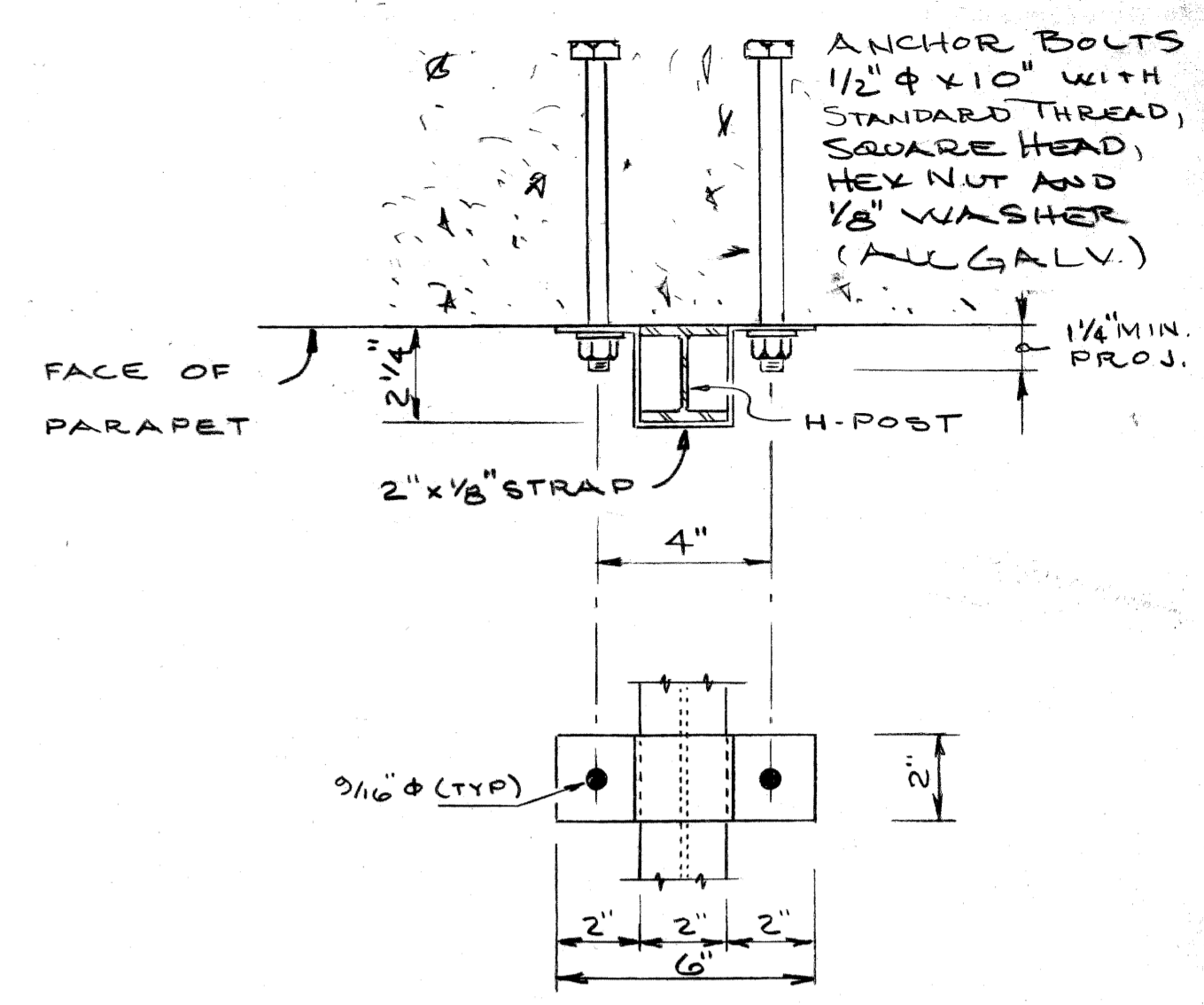
GROUNDING DETAIL



EXPANSION SLEEVE DETAIL



BASE PLATE DETAILS



BRACKET DETAILS

PARAPET NOTES

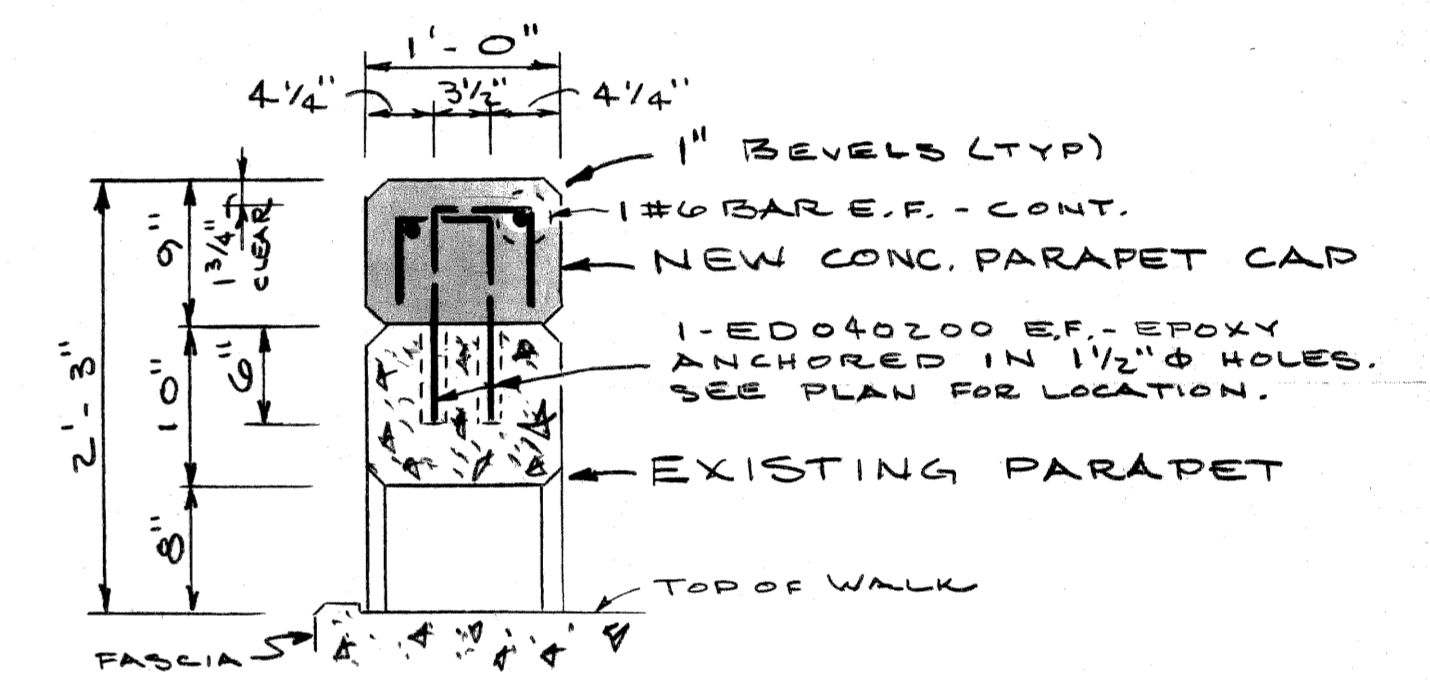
The pay item "CONCRETE PARAPET CAP" shall include all work and materials required for placement except steel reinforcement and epoxy anchoring of bars which will be paid for separately.

The concrete shall be grade 355 with 6AA coarse aggregate.

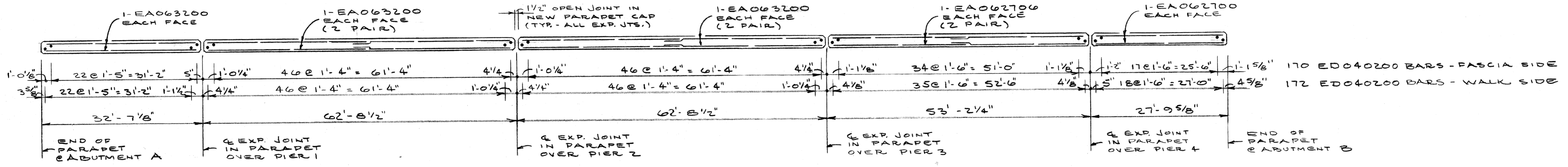
Construction shall conform to section 5.03 of the standard specifications.

Adjust dowel spacing as necessary, to clear old railing anchor bolts.

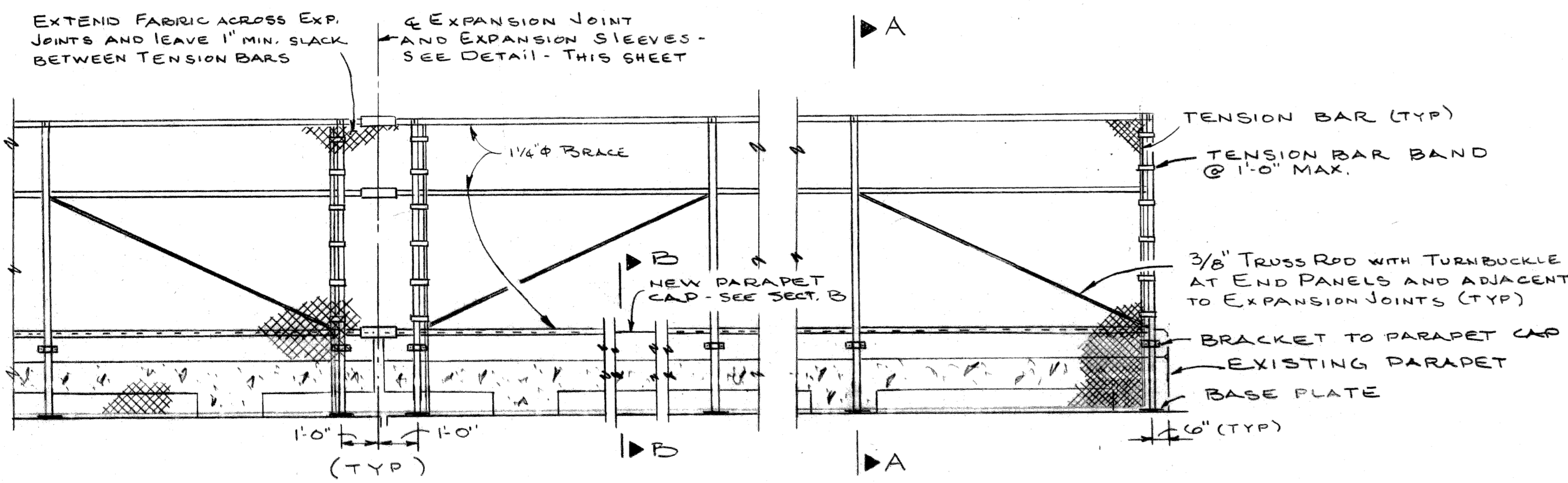
Removal of old aluminum railing is incidental to "CONCRETE PARAPET CAP".



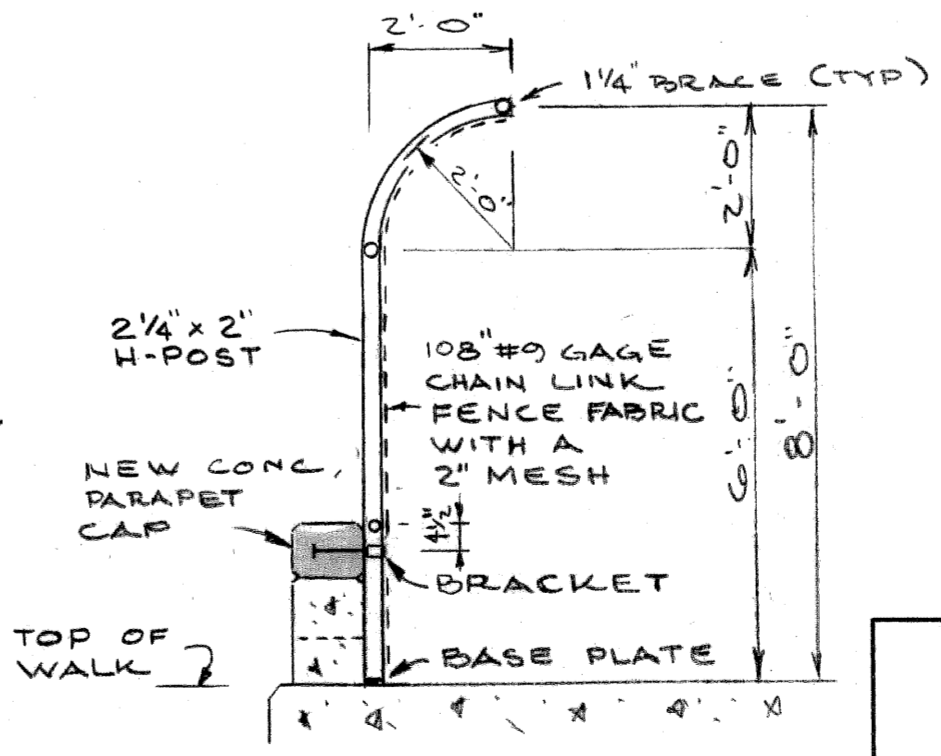
SECTION B-B



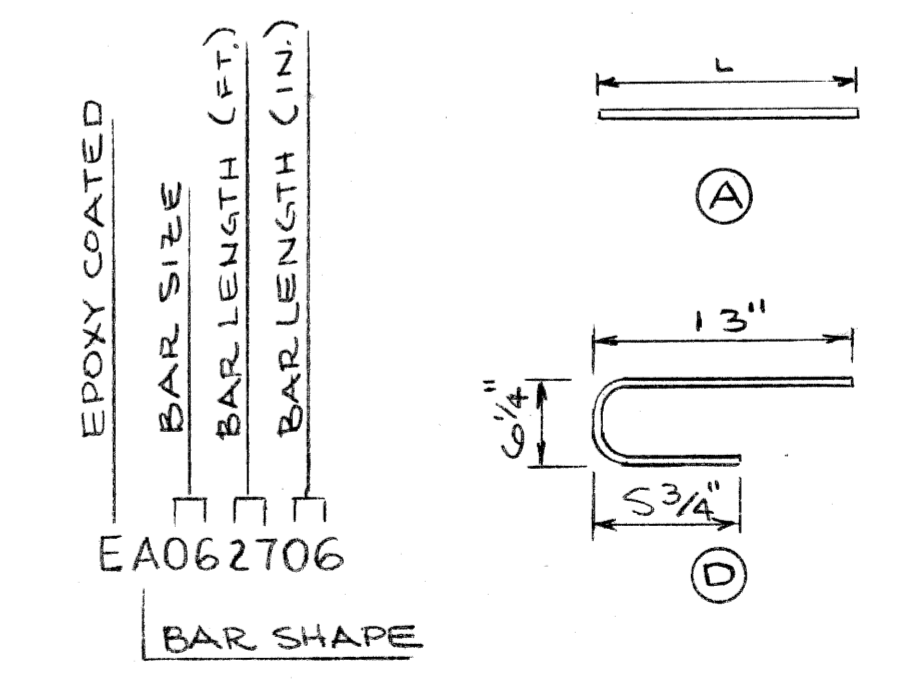
PLAN
(NORTH PARAPET IS SHOWN - SOUTH PARAPET IS OPPOSITE HAND.)



TYPICAL ELEVATION



SECTION A-A



BAR	NO. REQ'D	WEIGHT
EA062700	4	162
EA062706	8	330
EA063200	20	961
ED040200	684	914
		2367#

PLANS PREPARED BY
CITY OF DETROIT
DEPARTMENT OF PUBLIC WORKS
CITY ENGINEERS OFFICE

APPROVED: *T.E.M. Howan*
STRUCTURAL ENGINEER

JOB No. 79-22-26M

MICHIGAN DEPARTMENT OF TRANSPORTATION
FERRY ST. OVER I-75
PARAPET AND SCREENING DETAILS

REVISIONS			
NO.	DESCRIPTION	DATE	BY

SQUAD BOSS: A. FREIBERG 9-24-81
DRAWN BY: BAK 9-24-81
CHECKED BY: [Signature] 9-24-81
SHEET OF

S20 OF 82251