

NOTE: MAINTAIN A MINIMUM OF ONE LANE OF TRAFFIC IN EACH DIRECTION AT ALL TIMES.
 REVERSE PROC. FOR OPP. SIDE
 "SIDEWALK CLOSED ON ALL TYPE III BARRICADES"

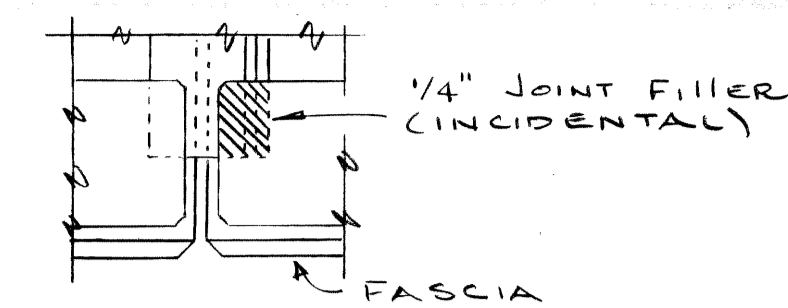
MICHIGAN DEPARTMENT OF TRANSPORTATION
 MARTIN AVE OVER I-94
 SCREENING AND RAILING REPLACEMENT
 STAGING AND CONSTRUCTION SIGNING

PREPARED BY
 CITY OF DETROIT
 DEPARTMENT OF PUBLIC WORKS
 CITY ENGINEER'S OFFICE
 APPROVED: *J.E. McLaughlin* J01 75
 79-22-26A

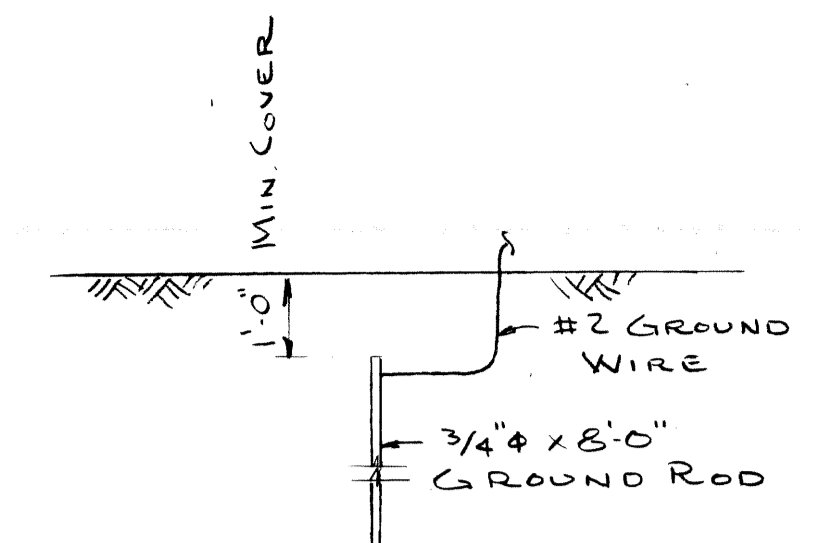
REVISIONS			
NO.	DESCRIPTION	DATE	BY

SQUAD BOSS	<i>A. J. ...</i>	2-25-81
DRAWN BY	<i>RAC</i>	2-25-81
CHECKED BY	<i>[Signature]</i>	2-25-81
SHEET		2 OF
S 06 OF 82023		

QUANTITIES		
ITEM	UNIT	AMOUNT
BRIDGE RAILING-SOLID PARAPET TYPE (MODIFIED)	L.F.	340
PEDESTRIAN FENCING, STRUCTURES	S.F.	2761
ELECTRICAL GROUNDING SYSTEM	EA	2
EPOXY ANCHORED BARS	EA	460

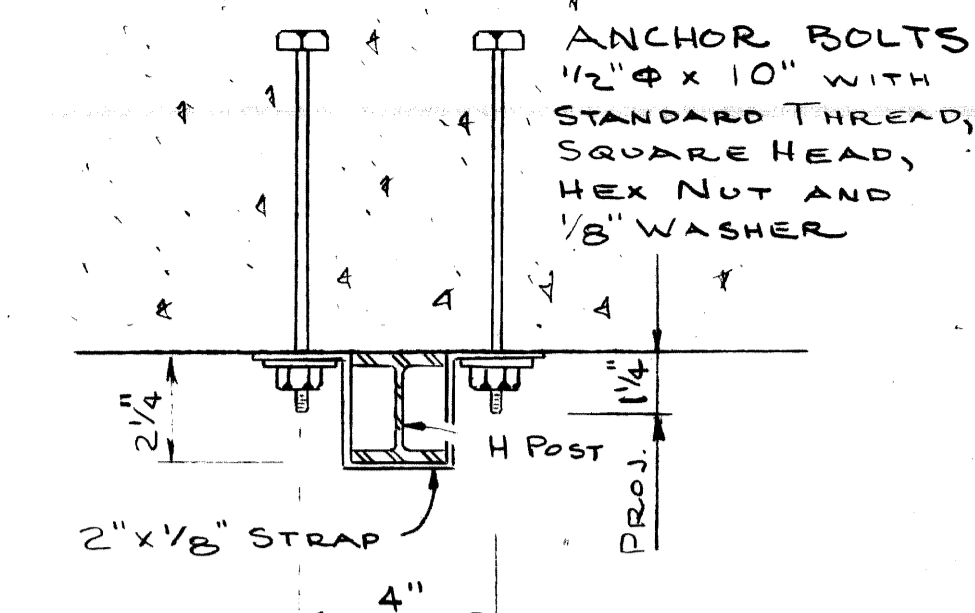


DETAIL AT EXPANSION JOINT

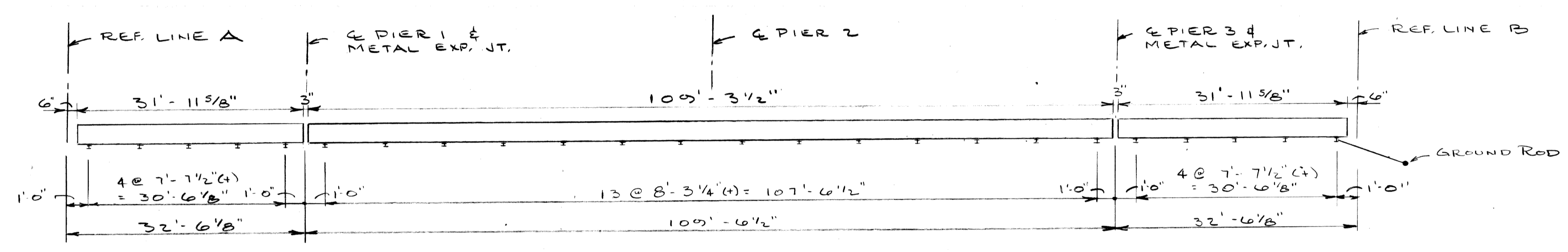


1. ALL UNDERGROUND CONNECTIONS SHALL BE CALDWELL THERMITE WELD, GAS OR ARC WELD.
2. EXPOSED CONNECTIONS MAY BE SPLIT BOLT OR CLAMP TYPE.
3. GROUND WIRE SHALL BE #2 AWG STRANDED SOFT DRAWN COPPER WIRE.

GROUNDING DETAIL

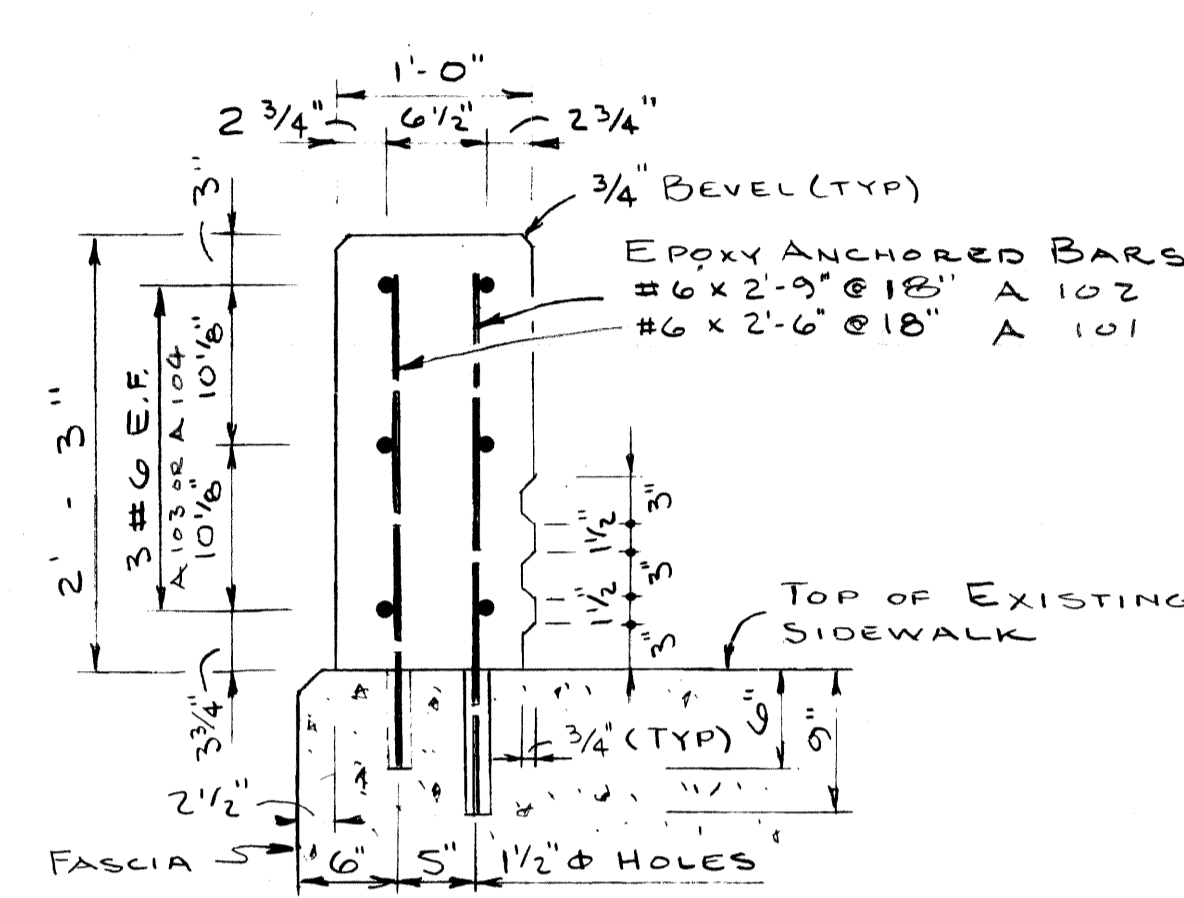


BRACKET DETAIL

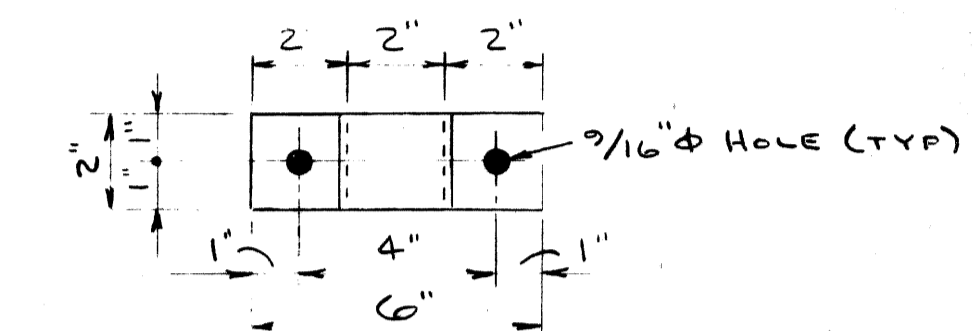


PLAN

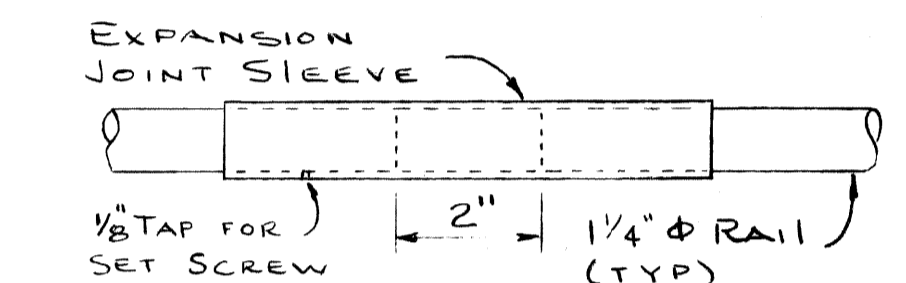
WEST SIDE SHOWN - EAST SIDE IS SIMILAR
N.T.S.



BRIDGE RAILING - SOLID PARAPET TYPE (MODIFIED)



STRAP DETAIL

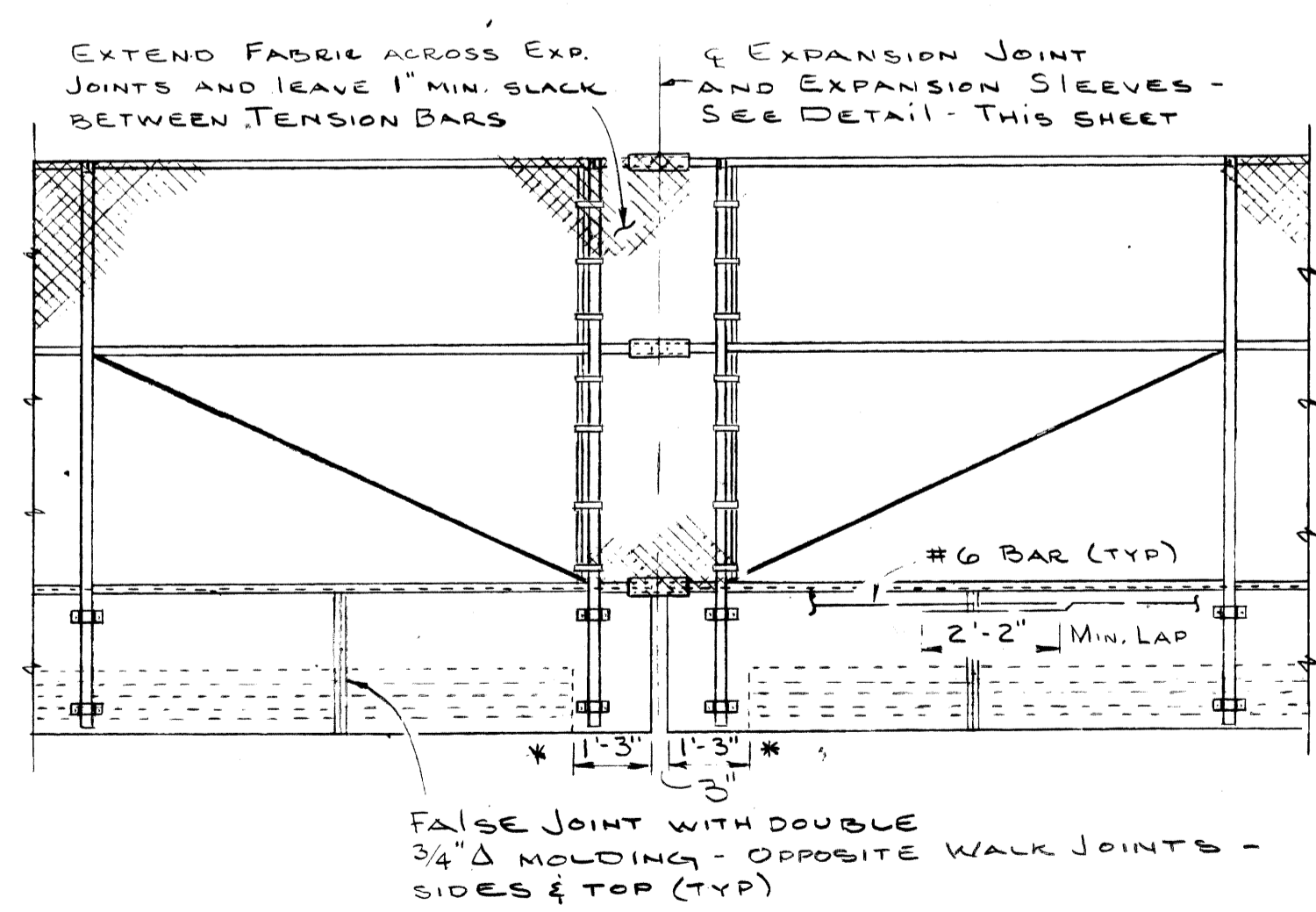


EXPANSION SLEEVE DETAIL

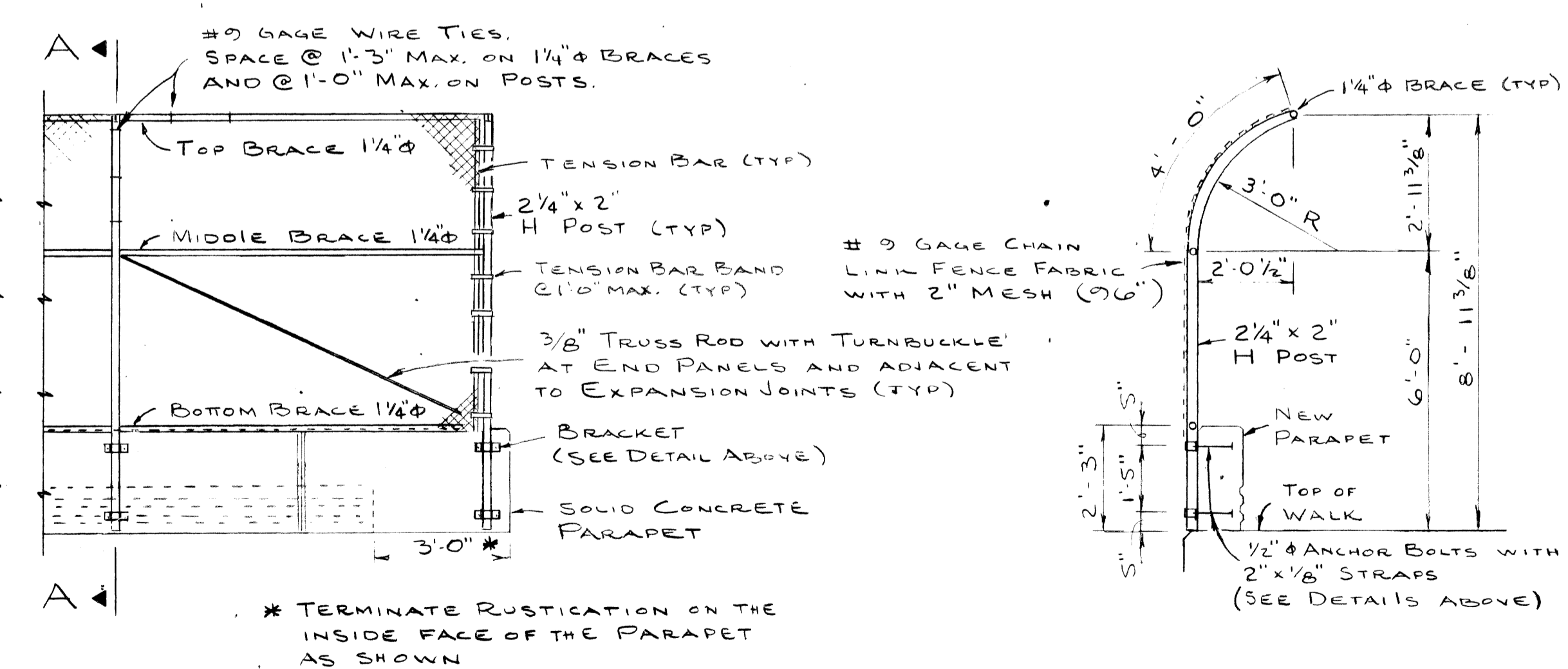
STEEL REINF. - EPOXY COATED					
LOCATION	MARK	SIZE	LENGTH	NO REQD	TOTAL
ALL SPANS	A 101	#6	2'-6"	230	864
ALL SPANS	A 102	#6	2'-9"	230	950
SPANS 1 & 4	A 103	#6	3'-6"	24	1136
SPANS 2 & 3	A 104	#6	3'-9"	36	2041
					4991

RAILING AND FENCING NOTES

- All work shall conform to MDOT STANDARD SPECIFICATIONS FOR HIGHWAY CONSTRUCTION, 1979 EDITION.
- All fabric for chain link fence shall be furnished with knuckling at both selvages.
- The posts shall be 2 1/4 x 2 inch galvanized H posts weighing 4.1 p.l.f. Round posts having a 2 1/8 inch O.D. weighing 5.79 p.l.f. galvanized may be used with similar connection details.
- The nominal 1 1/4 inch braces shall be 1 5/8 inch O.D. steel pipe or tubing weighing 2.27 p.l.f. galvanized.
- All posts and tubing shall be furnished with the manufacturers standard connections and its minimum weight shall be within 5% of that specified.
- Posts and tubing shall be bent in the shop as shown on the plans.
- All components are to be galvanized. Bolts, nuts and washers are to be galvanized in accordance with ASTM A 153.
- Tension bars shall be 3/4 x 1/4 inch galvanized steel.
- Fence fabric shall be galvanized, #9 gage with a 2 inch mesh.
- Contractor shall verify field conditions before fabrication.
- Care is to be taken in placing anchor bolts and brackets so as to insure that the brackets hold the posts firmly against concrete. Shim if necessary.
- PEDESTRIAN FENCING STRUCTURES shall include the fabric, posts, braces, anchor bolts, brackets and all suitable connections and fittings.
- BRIDGE RAILING-SOLID PARAPET TYPE (MODIFIED) shall include all materials for the conc. parapet including concrete, reinf. steel and removal of exist. railings.
- WHERE SIGNS MOUNTED ON BRIDGE FASCIAS INTERFERE WITH CONSTRUCTION, THEY MAY BE REMOVED AND RESET AT THE CONTRACTORS EXPENSE.



TYPICAL ELEVATION



SECTION A-A

PLANS PREPARED BY
CITY OF DETROIT
DEPARTMENT OF PUBLIC WORKS
CITY ENGINEER'S OFFICE
T. E. McLaw
STRUCTURAL ENGINEER
79-22-26A

MICHIGAN DEPARTMENT OF TRANSPORTATION
MARTIN AVE OVER I-94
SCREENING AND RAILING REPLACEMENT
SOLID PARAPET AND SCREENING DETAILS

REVISIONS			
NO	DESCRIPTION	DATE	BY

DRAWN BY: RAK
 CHECKED BY: [Signature]
 SHEET 3 OF 3
 506 OF 82023