



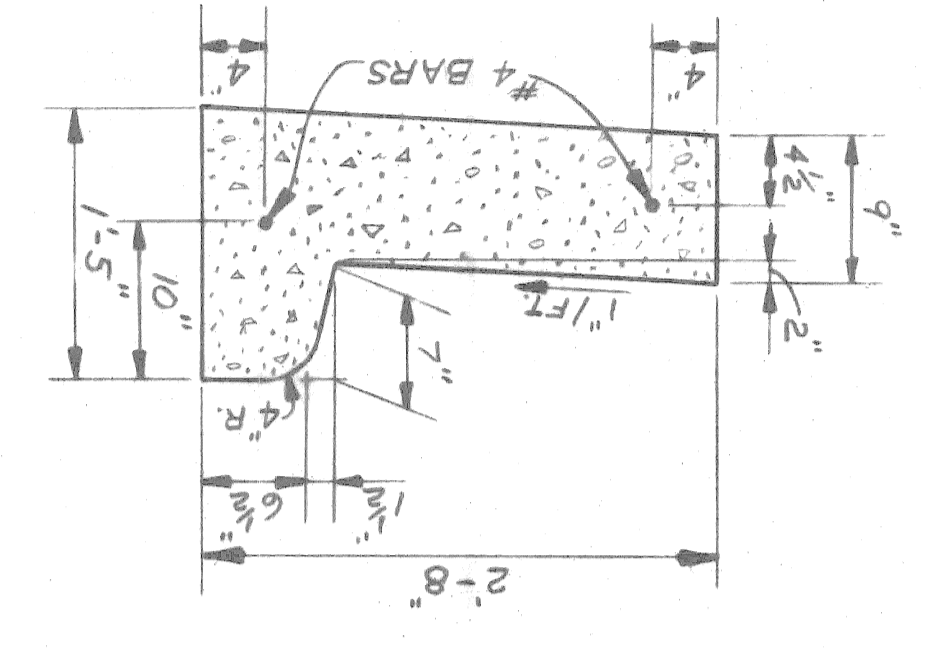


REVISIONS LOCATED BY COORDINATES ON SHEET	DESIGNED BY	ENGINEER OF STREETS	APPROVED:
DESCRIPTION	DRAWN BY	CITY ENGINEERING DIVISION - E.P.M.S.	
DATE	TRACED BY	BUREAUS OF STREETS AND HIGHWAYS	
NO. OF SHEETS	CHECKED BY		
CONTRACT NO. 16563A	DATE		
SHEET OF SHEETS			
R-4			
DATE 8-79			

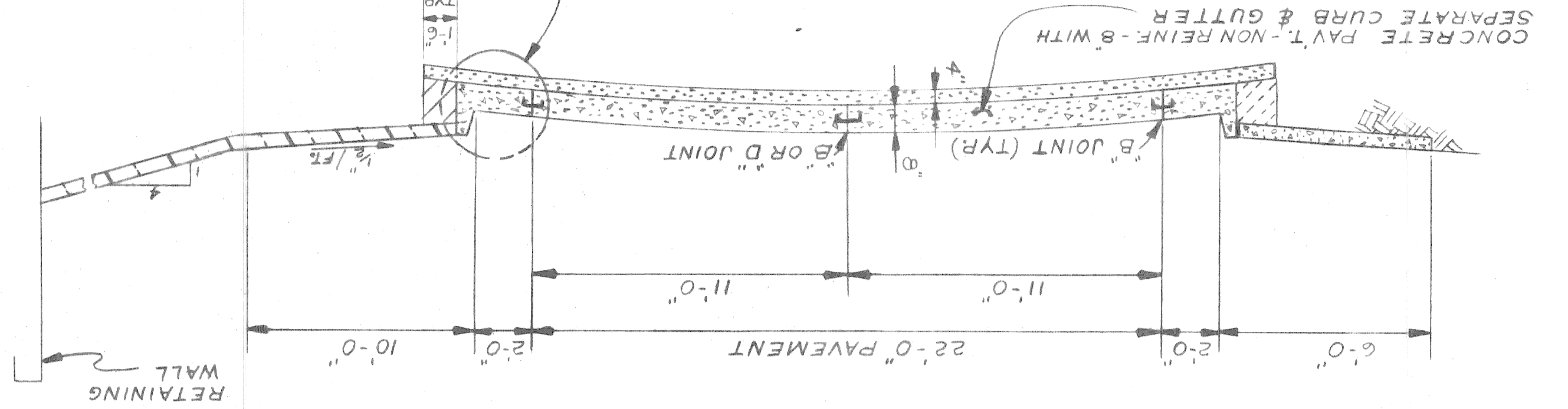
JOHN C LODGE EXIT RAMP AND JEFFERSON AVE.  
RECONSTRUCTION AT THE JOE LOUIS ARENA

SERVICE ROAD TYPICAL

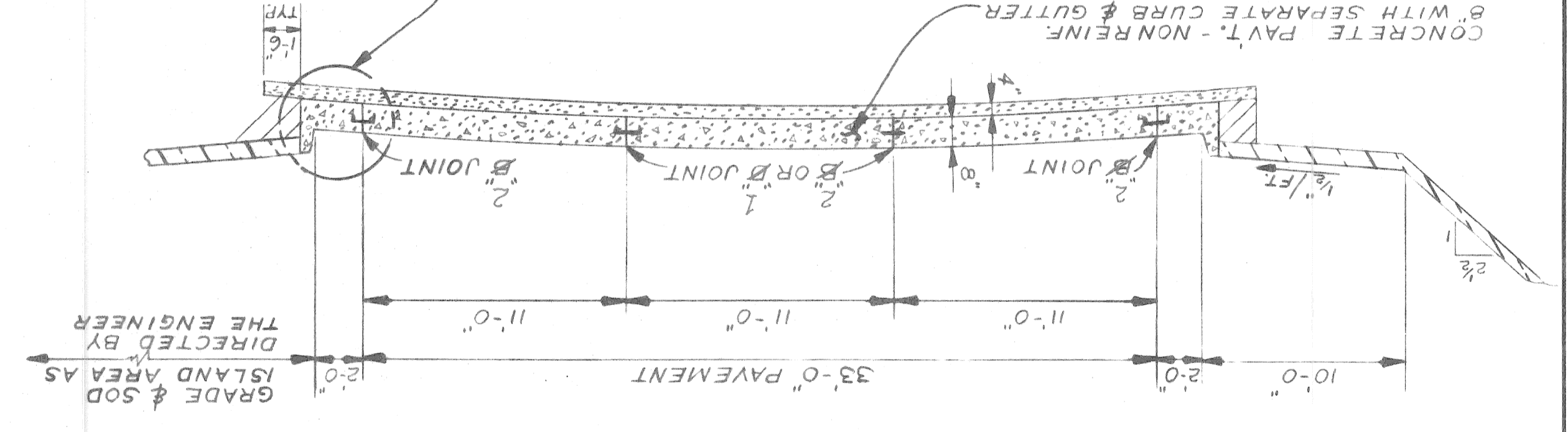
DETAIL A-1 MODIFIED  
CONCRETE CURB & GUTTER  
NO SCALE



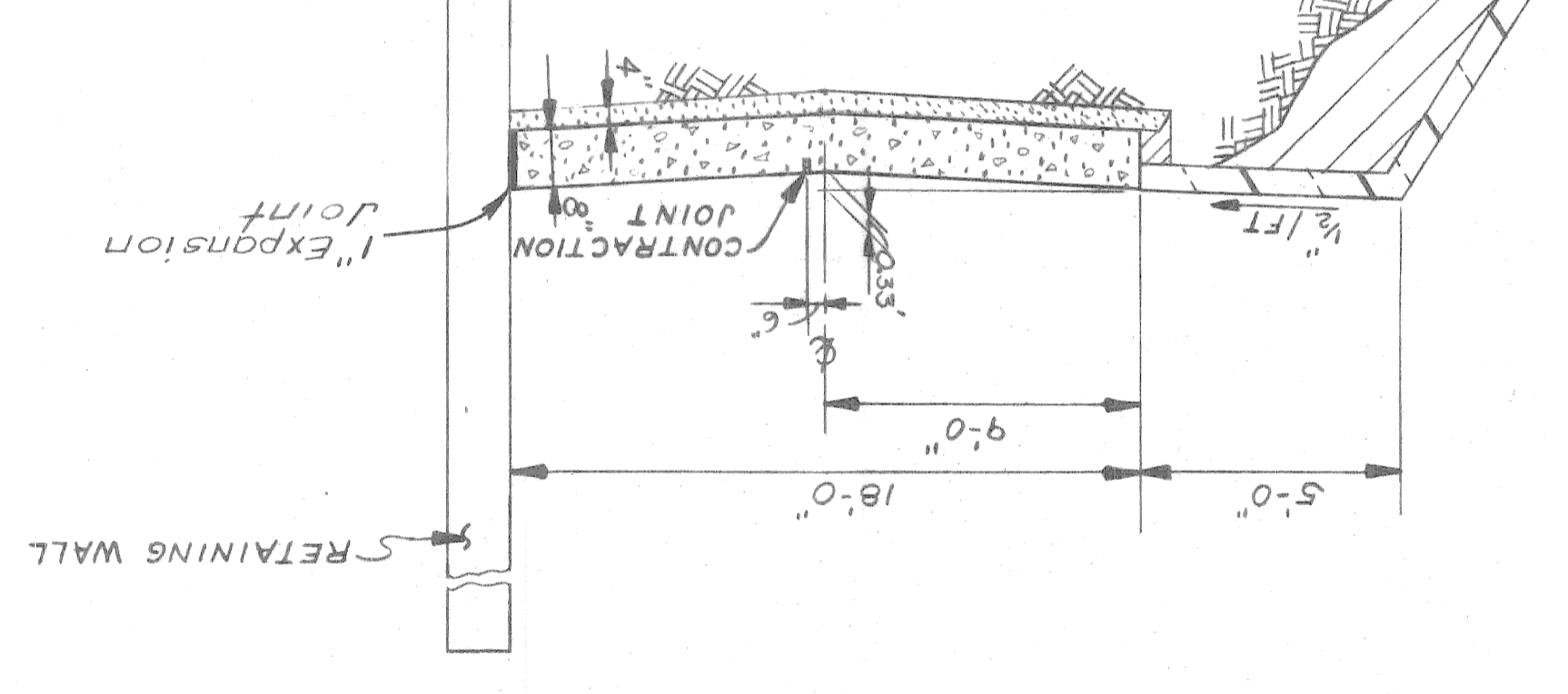
SECTION E-E  
NO SCALE  
(SEE NOTE #2)



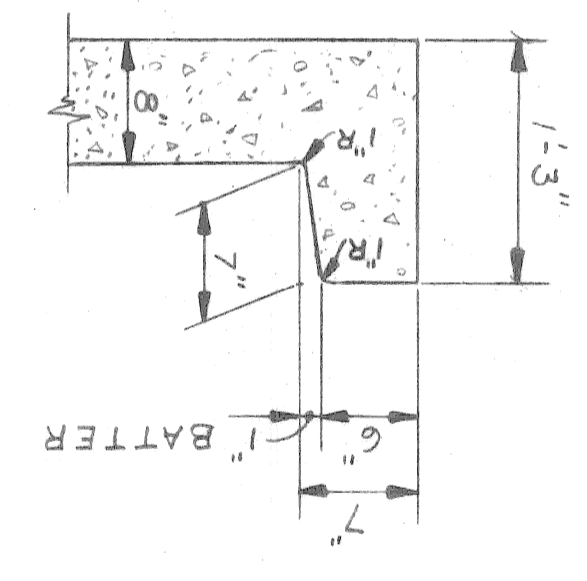
SECTION B-B  
NO SCALE  
(SEE NOTE #1)



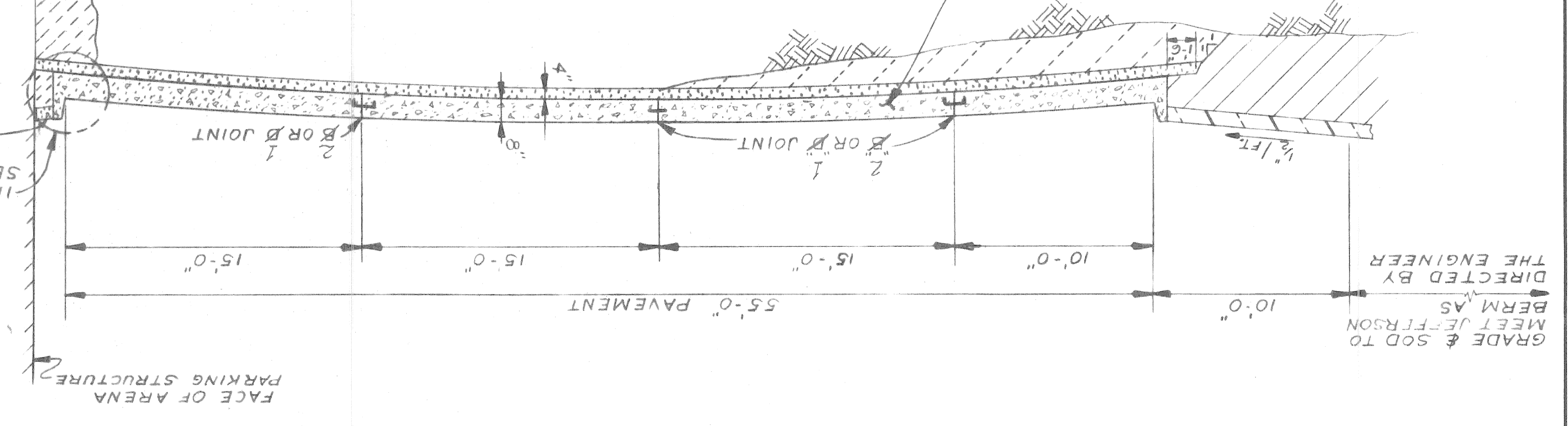
SECTION F-F  
NO SCALE



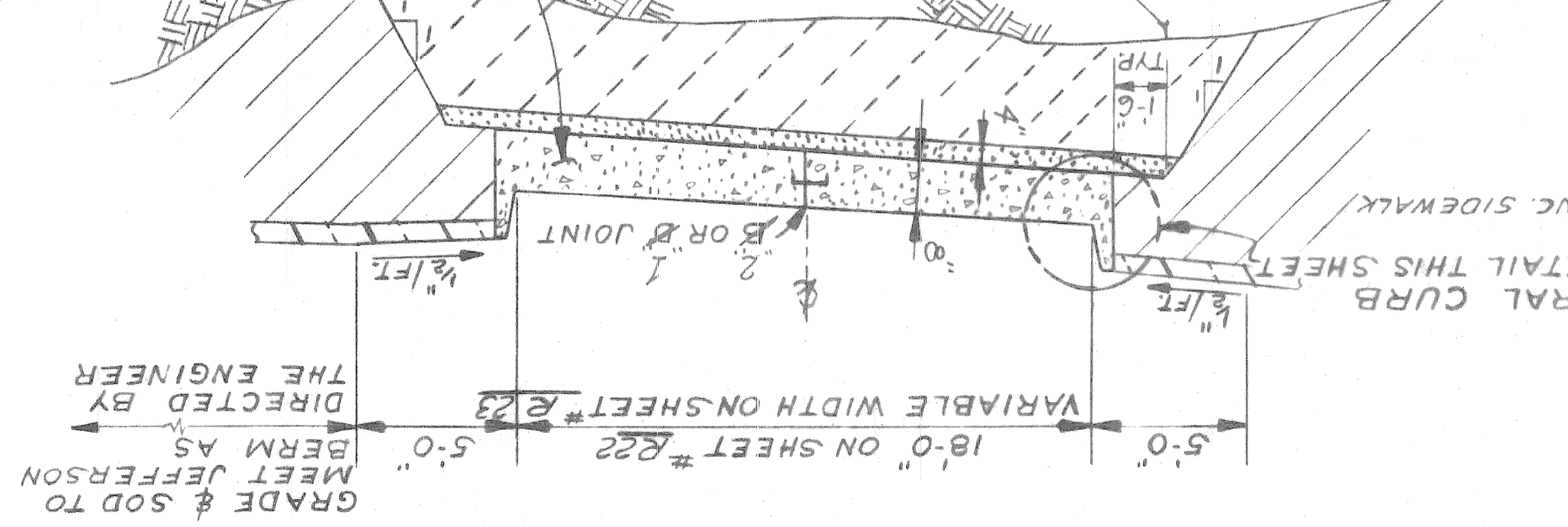
INTEGRAL CURB DETAIL  
NO SCALE



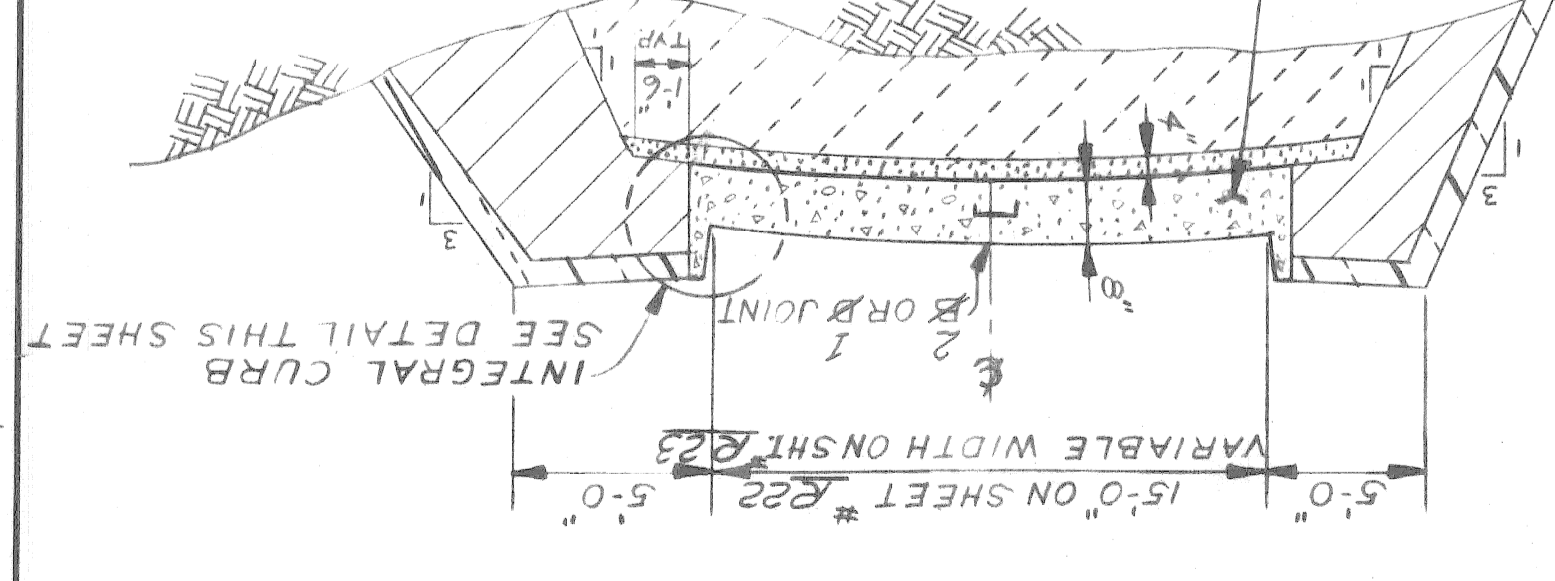
SECTION A-A  
NO SCALE  
(SEE NOTE #1)



SECTION C-C  
NO SCALE



SECTION D-D  
NO SCALE



GENERAL NOTES:

1. FOR ELEMENTS OF 55' AND 33' PAVEMENTS, SEE SHT. NO. R1.
2. FOR ELEMENTS OF 22' PAVEMENT, SEE SHT. NO. R2.
3. FOR EARTHWORK LEGEND, SEE SHT. NO. R1.

JOINT LEGEND

- B OR B' - LONGITUDINAL PAVEMENT JOINT ACCORDING TO M.D.S.H. STD. DRWG. II 41-G
- B OR B' - OPTIONAL, B OR B'
- C6 - TRANSVERSE PAVEMENT CONTRACTION JOINT ACCORDING TO M.D.S.H. STD. DRWG. II 39-F
- C6 - TRANSVERSE PAVEMENT EXPANSION JOINT ACCORDING TO M.D.S.H. STD. DRWG. II 39-F
- 1" - TRANSVERSE PAVEMENT CONTRACTION JOINT ACCORDING TO M.D.S.H. STD. DRWG. II 39-F
- 1" - TRANSVERSE PAVEMENT EXPANSION JOINT ACCORDING TO M.D.S.H. STD. DRWG. II 39-F

A B C D E F G

DATE	8-79	ALIGNMENT	FOR	CITY OF DETROIT CITY ENGINEERING DIVISION - E.P.M.D. BUREAUS OF STREETS AND HIGHWAYS	APPROVED:	DESIGNED BY	Polito	DRAWN BY	Polito	CHECKED BY	Plater	REVISIONS LOCATED BY COORDINATES ON SHEET
CONTRACT NO.	16563A				SHEET OF SHEETS							
JOHN C LODGE EXIT RAMP & JEFFERSON AVE RECONSTRUCTION			AT THE JOE LOUIS ARENA									

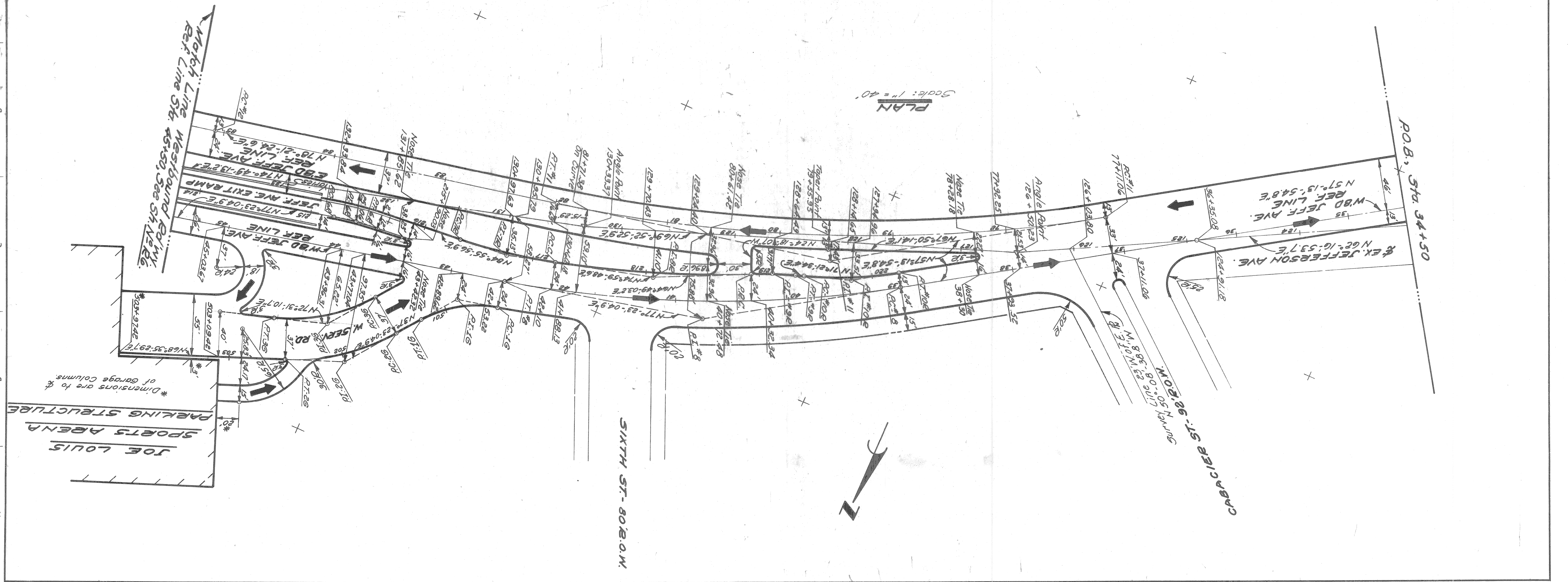
**WEST GABAGE ACCESS RDWYS-CURVE DATA**

Curve #	Δ	D	E	L	T	R	PC	PI	PT
Curve #8	21° 07' 29.9"	4° 19' 50.7"	1323'	246.70'	487.79'	22.80'	77+11.06	79+57.76	81+98.85
Curve #11	3° 32' 11.5"	19° 19' 13.2"	1700'	52.48'	104.93'	0.81'	85+08.12	85+60.60	86+13.05
Curve #12	7° 52' 52.0"	19° 05' 54.9"	500'	19.79'	39.52'	0.65'	215+20.52	215+40.31	215+60.04
Curve #16	40° 00' 00"	57° 17' 44.8"	100'	36.40'	69.81'	6.42'	500+53.22	502+00.75	502+50.38
Curve #26	31° 12' 24.8"	30° 38' 22"	187'	52.22'	101.85'	7.16'	501+48.53	502+00.75	502+50.38
Curve #36	34° 19' 55.2"	38° 11' 49.9"	150'	46.34'	89.88'	6.99'	218+92.87	219+12.30	219+31.69

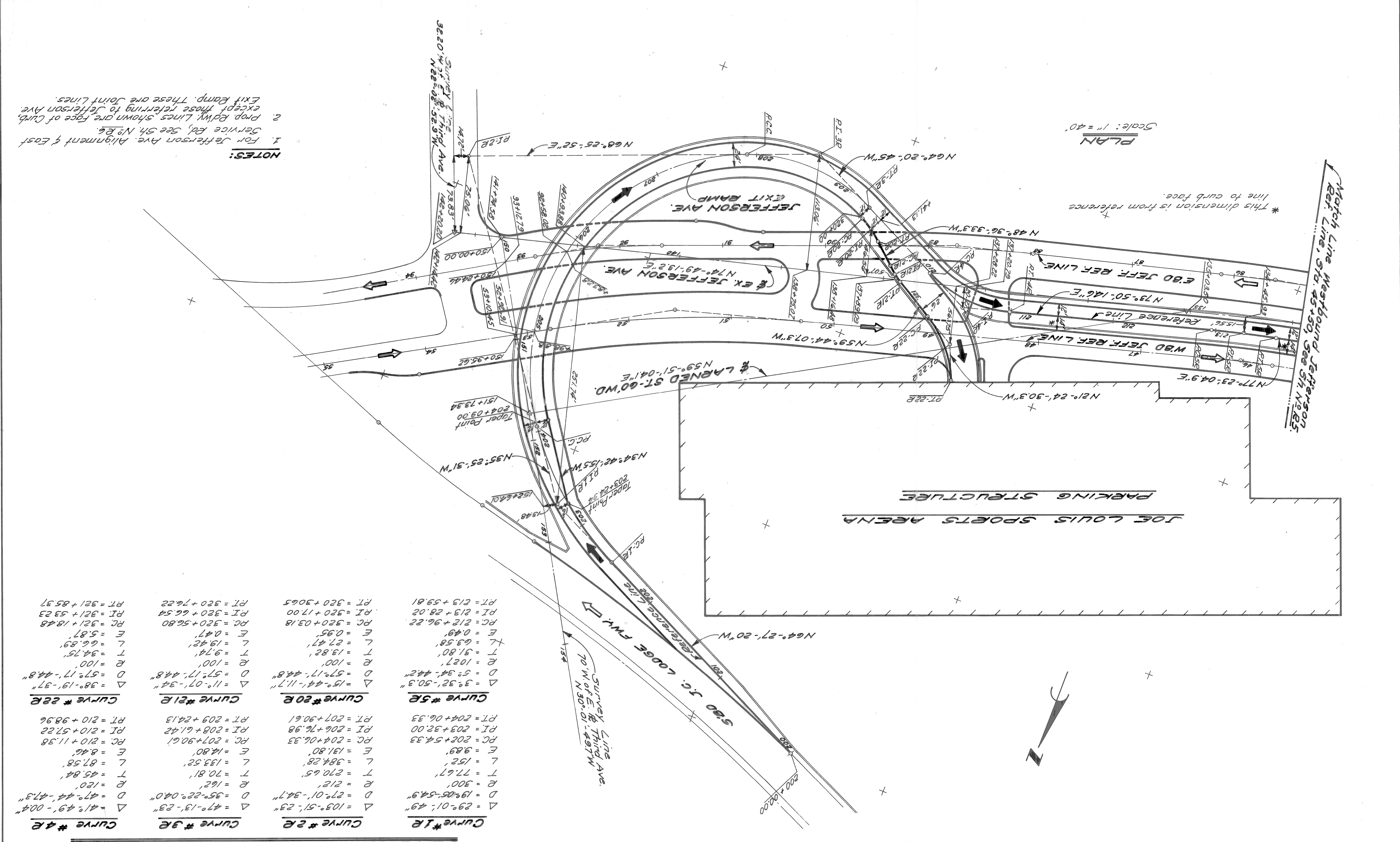
**JEFFERSON AVE. EXIT RAMP CURVE DATA**

Curve #	Δ	D	E	L	T	R	PC	PI	PT
Curve #6E	9° 56' 08.3"	11° 25' 48.6"	501.27'	43.57'	86.93'	1.89'	216+32.54	216+76.11	217+19.47
Curve #7E	10° 10' 45.4"	5° 52' 13.7"	976'	86.93'	173.40'	3.86'	217+19.47	218+06.40	218+92.87
Curve #9E	6° 32' 31.2"	16° 51' 06.1"	340'	19.43'	38.82'	0.55'	218+92.87	219+12.30	219+31.69
Curve #10E	14° 07' 39.6"	16° 51' 06.1"	340'	42.13'	83.84'	2.60'	219+39.67	219+81.80	220+23.51

**NOTES:**  
 1. Roadway lines shown are face of curb.







**JEFFERSON AVE. EXIT RAMP CURVE DATA**

Curve #	Δ	D	E	L	T	R	PC	PI	PT
Curve # 1R	29°-01'-49"	19°-05'-54.9"	300'	152'	71.67'	1027'	202+54.33	203+32.00	204+06.33
Curve # 2R	103°-51'-23"	27°-01'-34.7"	212'	384.28'	270.65'	100'	204+06.33	206+76.98	207+90.61
Curve # 2R	47°-13'-23"	57°-17'-44.8"	162'	133.52'	70.81'	100'	207+90.61	208+61.42	209+24.13
Curve # 3R	41°-49'-00.4"	57°-17'-44.8"	120'	87.58'	45.84'	100'	210+11.38	210+57.22	210+98.96
Curve # 4R	38°-19'-37"	57°-17'-44.8"	100'	34.75'	6.89'	100'	321+18.48	321+53.23	321+85.37
Curve # 21R	11°-07'-34"	57°-17'-44.8"	100'	9.74'	0.47'	100'	320+56.80	320+66.54	320+76.22
Curve # 20R	15°-44'-11.7"	57°-17'-44.8"	100'	27.47'	0.95'	100'	320+03.18	320+17.00	320+30.65
Curve # 5R	3°-32'-50.3"	52°-34'-44.2"	1027'	63.58'	0.49'	1027'	212+96.22	213+28.02	213+59.81

**NOTES:**

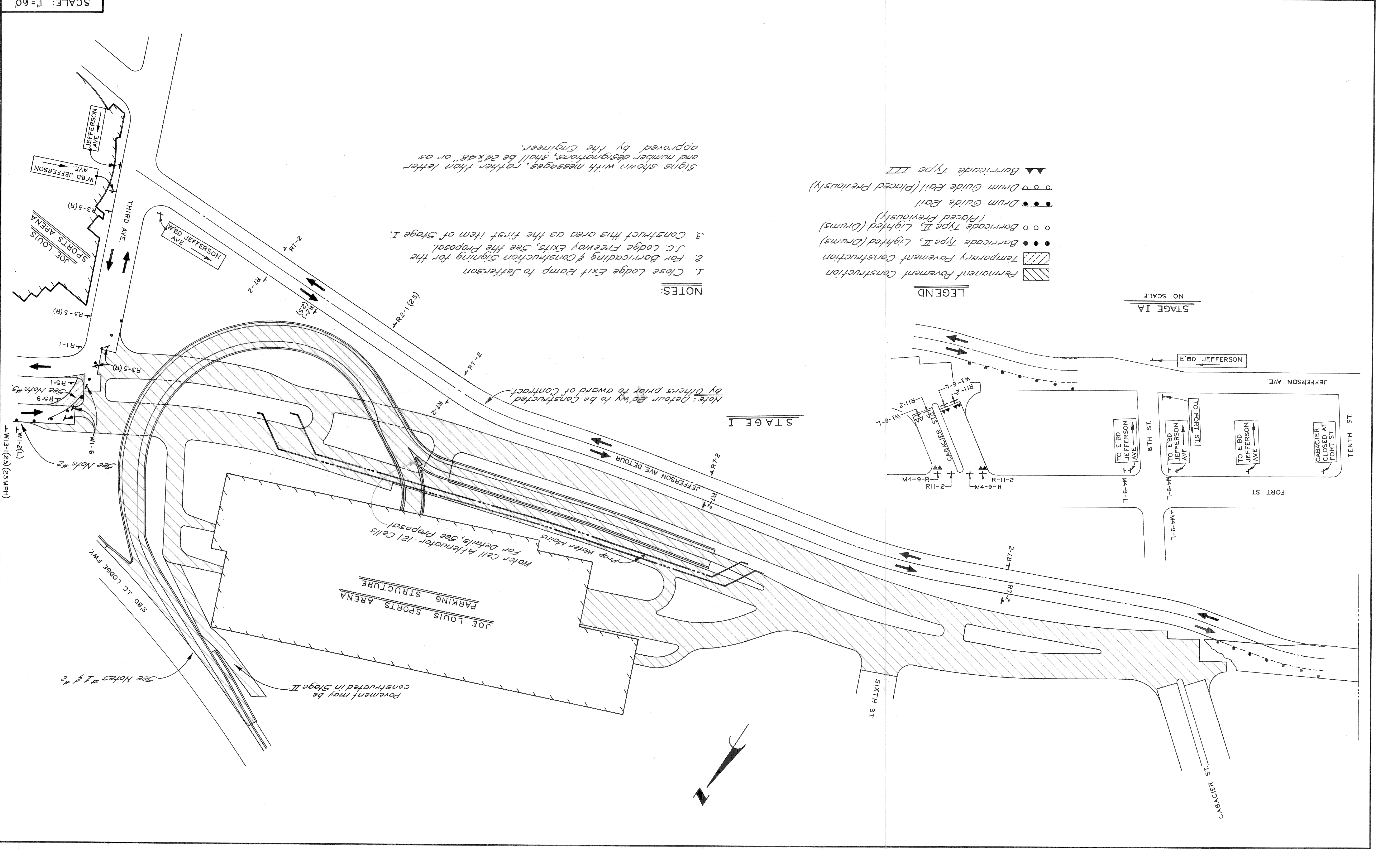
- For Jefferson Ave. Alignment & East Exit Ramp. These are Joint Lines.
- Prop Rdwy. Lines shown are face of curb, except those referring to Jefferson Ave. Service Rd. See 5th. No. 8.

PLAN  
Scale: 1" = 40'

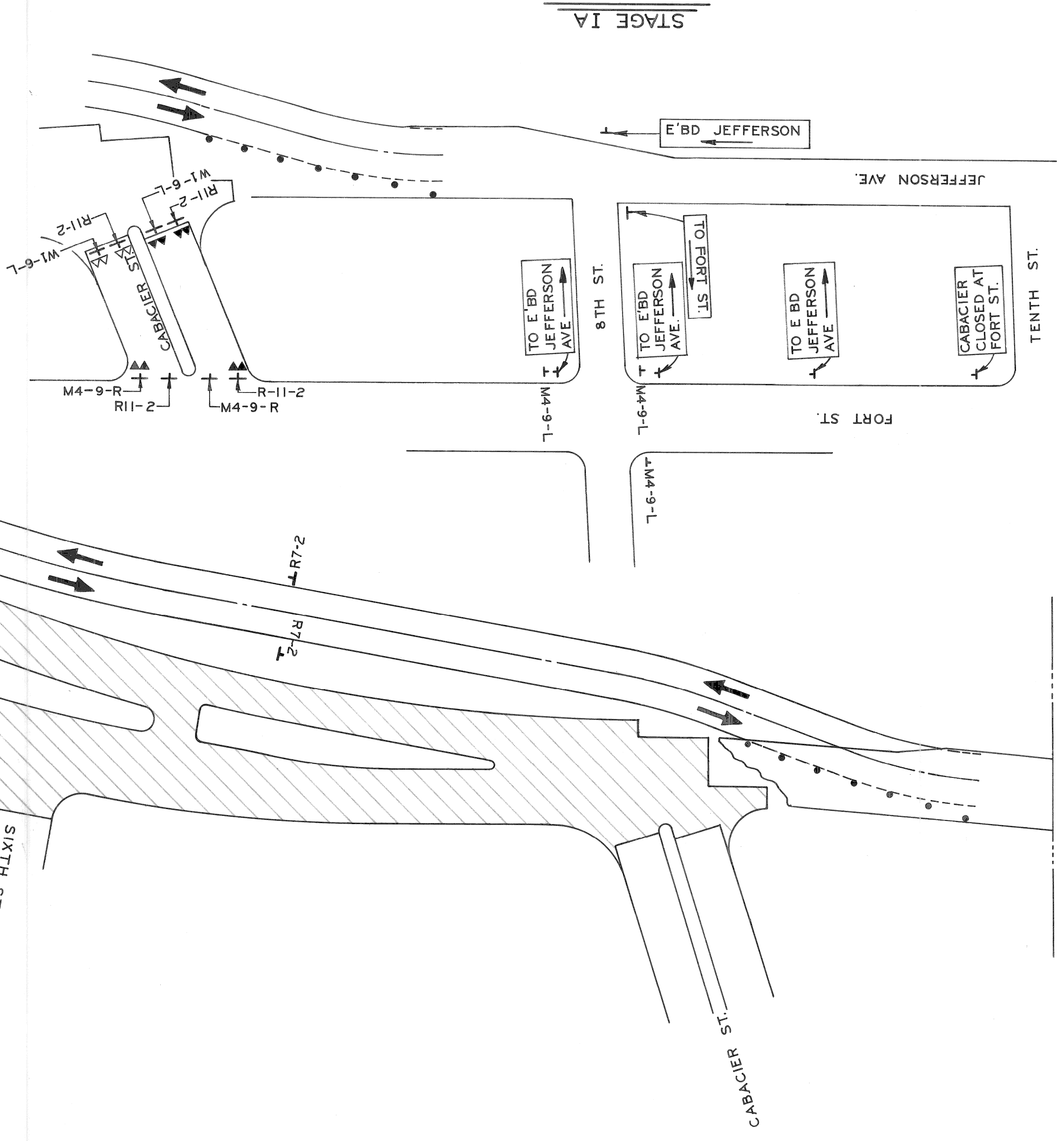
\* This dimension is from reference line to curb face.

March Line Westbound Jefferson Ref. Line, Sta. 45+50, See 5th. No. 85

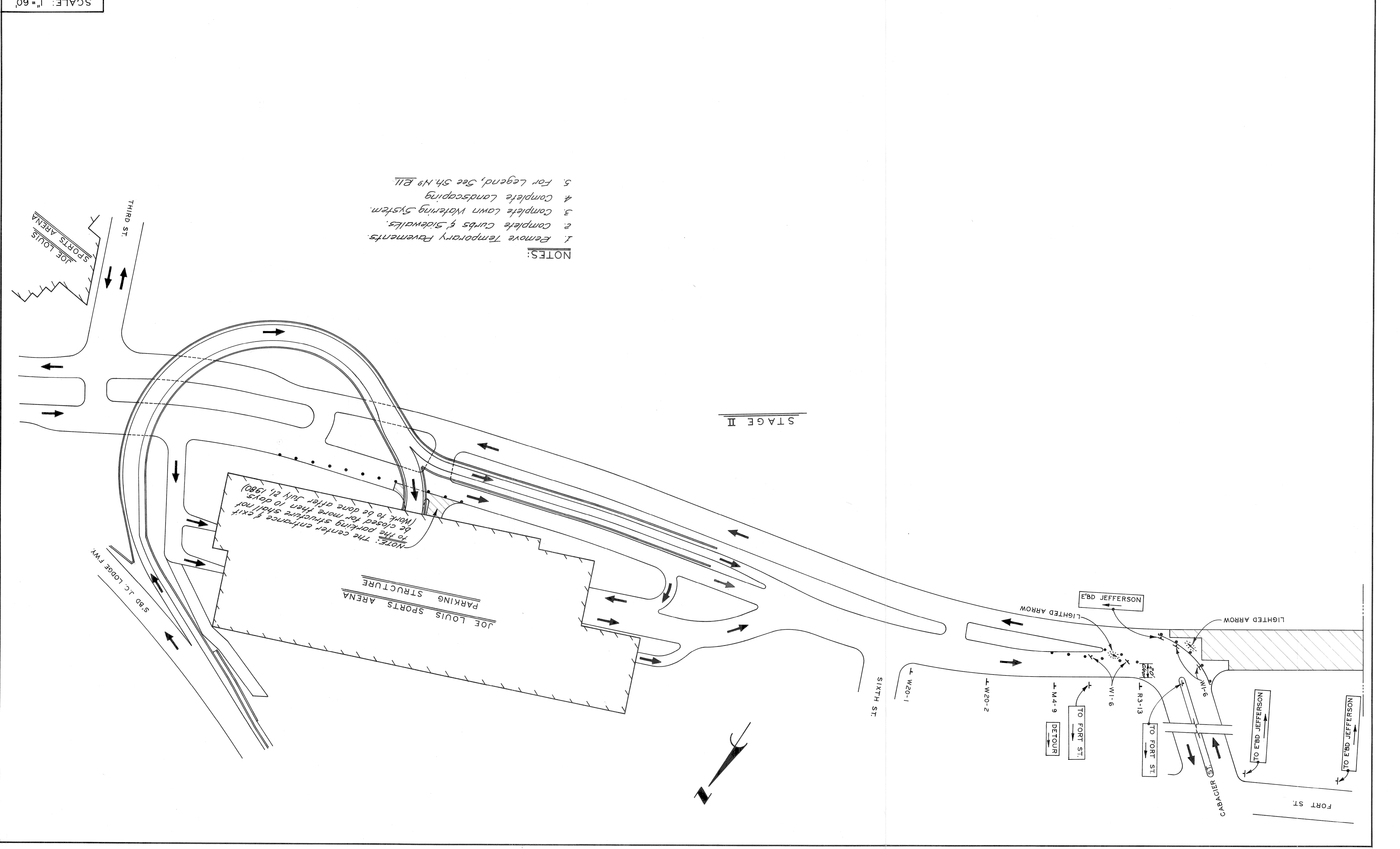
DATE 8 - 79		CONSTRUCTION SEQUENCE - STAGE I		CITY OF DETROIT		ENGINEER OF STREETS		DESIGNED BY		REVISIONS LOCATED BY COORDINATES ON SHEET	
R-11		JOHN C. LODGE EXIT RAMP & JEFFERSON AVE. RECONSTRUCTION		BUREAU OF STREETS AND HIGHWAYS		HIGHWAY ENGINEER		DRAWN BY		DESCRIPTION	
CONTRACT NO. 16563A		AT THE JOE LOUIS ARENA		CITY ENGINEERING DIVISION - E.P.M.D.		ENGINEER OF STREETS		TRACED BY		D.M.N. C.K.D. A.P.V.D. DATE	
SHEET OF SHEETS		SCALE: 1" = 60'		APPROVED:		[Signature]		CHECKED BY		DRAWINGS	



- LEGEND**
- ▨ Permanent Pavement Construction
  - ▨ Temporary Pavement Construction
  - Barricade Type II, Lighted (Drums)
  - Barricade Type II, Lighted (Drums) (Placed Previously)
  - Drum Guide Rail
  - Drum Guide Rail (Placed Previously)
  - ▲▲ Barricade Type III



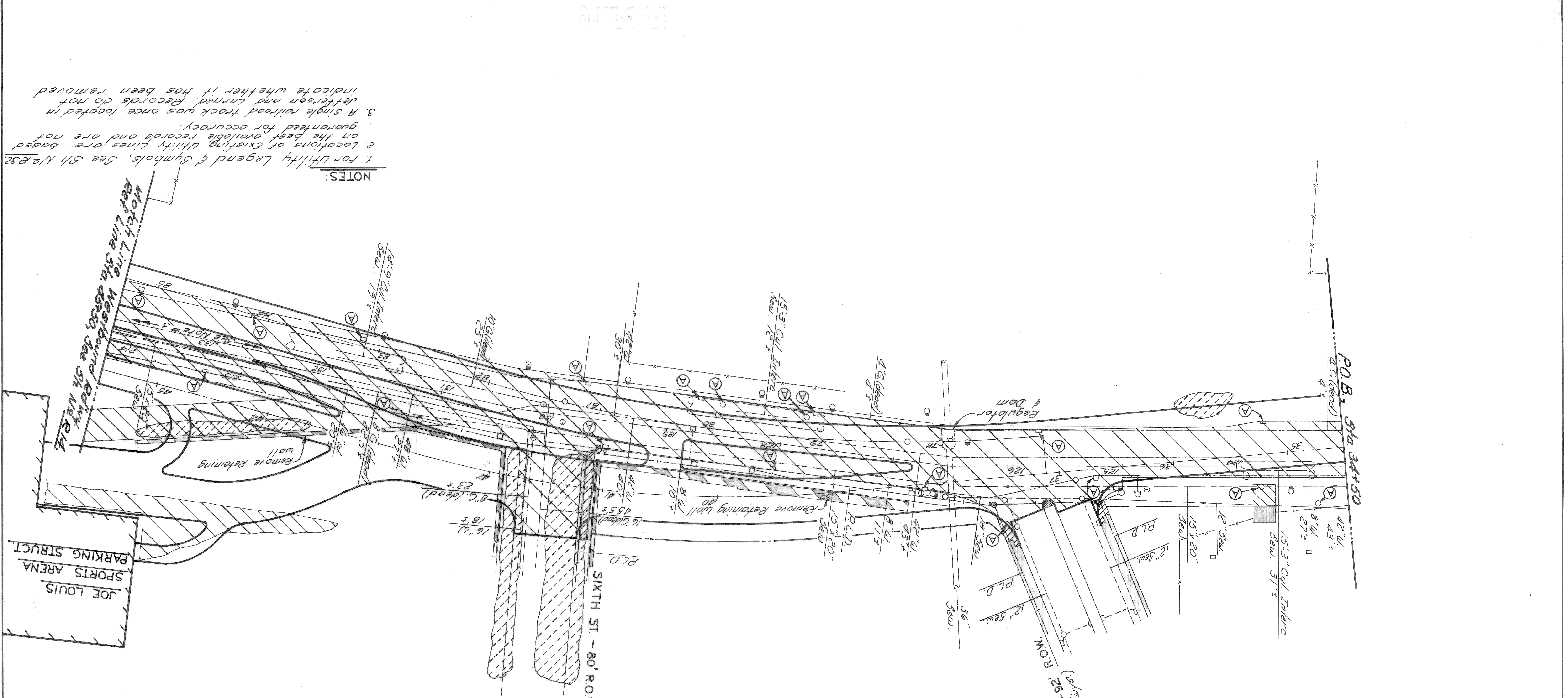
REVISIONS LOCATED BY COORDINATES ON SHEET		APPROVED:		CITY OF DETROIT		CONSTRUCTION SEQUENCE - STAGE II		DATE 8-79	
COORD.	DESCRIPTION	DESIGNED BY	ENGINEER OF STREETS	CITY ENGINEERING DIVISION - E.P.M.D.		JOHN C. LODGE EXIT RAMP & JEFFERSON AVE. RECONSTRUCTION		SHEET OF SHEETS	
		TRACED BY	ENGINEER OF STREETS	BUREAU OF STREETS AND HIGHWAYS		AT THE JOE LOUIS ARENA		CONTRACT NO. 16563A	
		CHECKED BY	HIGHWAY ENGINEER	BUREAU OF STREETS AND HIGHWAYS		CONSTRUCTION SEQUENCE - STAGE II		R-12	
								8-79	





DATE 8-79		REVISIONS LOCATED BY COORDINATES ON SHEET		CITY OF DETROIT		APPROVED:	
R-13		6E Add 1 Abandonment		BUREAU OF STREETS AND HIGHWAYS		HIGHWAY ENGINEER	
CONTRACT NO. 16563A		DESCRIPTION		CITY ENGINEERING DIVISION - E.P.M.D.		ENGINEER OF STREETS	
SHEET OF SHEETS		DRAWN BY		JOHN C LODGE EXIT RAMP & JEFFERSON AVE. RECONSTRUCTION		DESIGNED BY	
		REFERENCES		AT THE JOE LOUIS ARENA			
		DRN. CKD. APP'D DATE		REMOVALS			
		COORD. DATE		STA. 34+50 TO STA. 45+50			

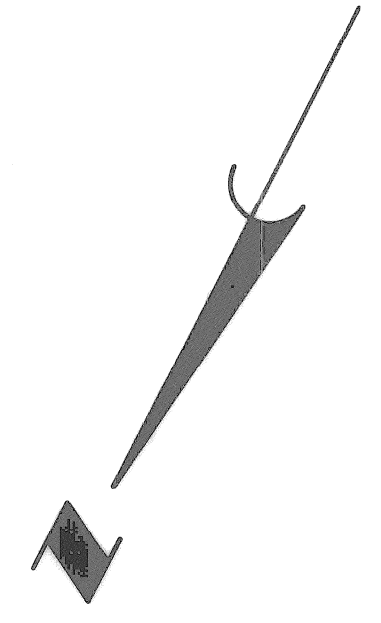
SCALE: 1"=40'



- REMOVAL LEGEND**
- Removing Pavt.
  - Removing Sidewalk
  - Abandoning Drainage Structures
  - Existing Sidewalk or Driveway to Remain
  - Removing Bailroad Retaining Wall
  - Fence
  - Debris Removal (To be paid for as Earth Excavation. Limits to be determined by the Engineer)

**NOTES:**

1. For Utility Legend & Symbols, See 5th N.E.32
2. Locations of existing Utility Lines are based on the best available records and are not guaranteed for accuracy.
3. A single railroad track was once located in Jefferson and Larned. Records do not indicate whether it has been removed.



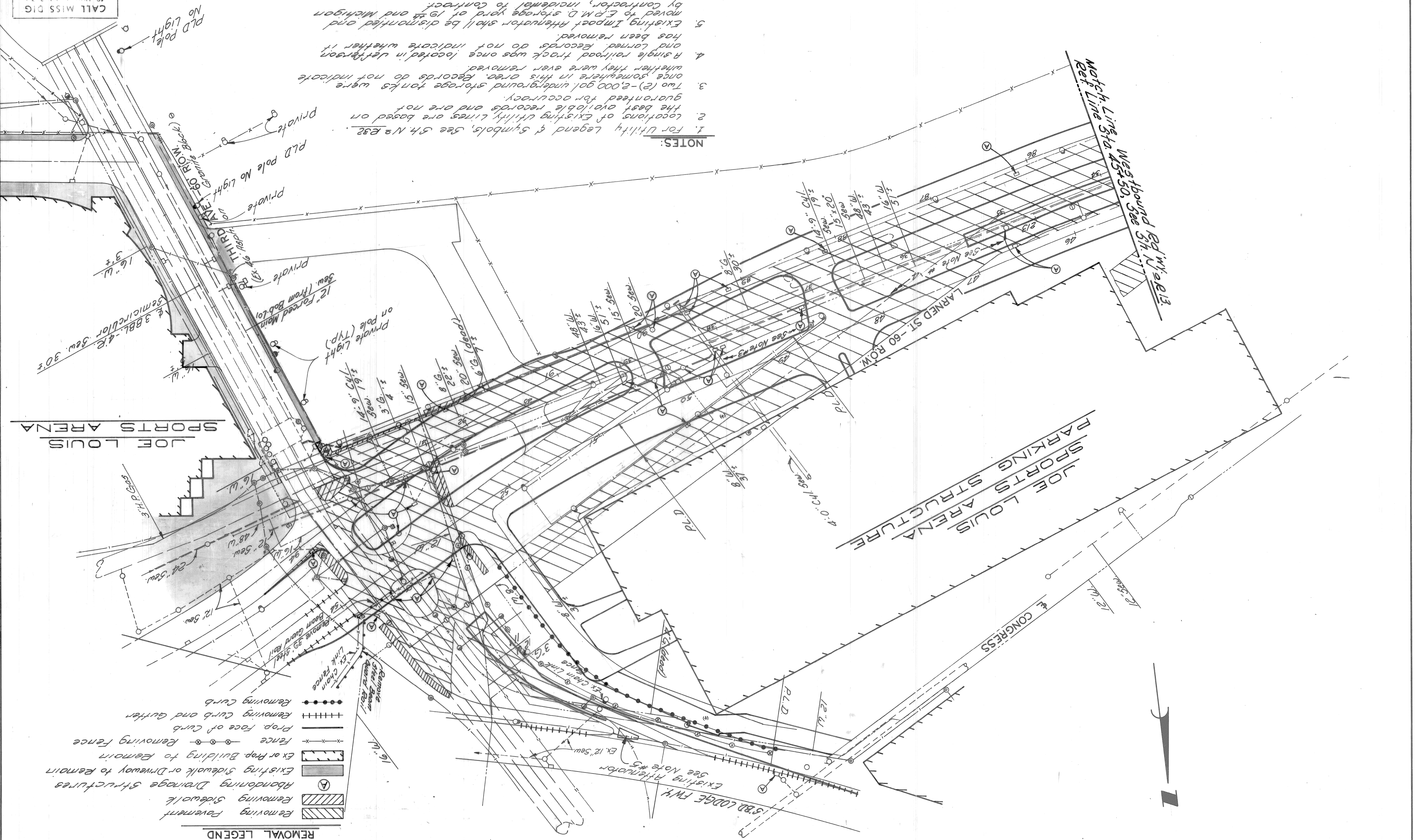
A B C D E F G



CITY OF DETROIT ENGINEERING DIVISION - E.P.M.D.		CITY OF DETROIT BUREAUS OF STREETS AND HIGHWAYS		DATE 8-79	
DESIGNED BY	DRAWN BY	CHECKED BY	APPROVED:	CONTRACT NO. 16563A	SHEET OF SHEETS
REVISIONS LOCATED BY COORDINATES ON SHEET	DESCRIPTION	DATE	BY	NO. R-14	PROJECT JOHN C LODGE EXIT RAMP & JEFFERSON AVE. RECONSTRUCTION AT THE JOE LOUIS ARENA

SCALE: 1" = 40'

- NOTES:**
1. For Utility Legend & Symbols, See 5th N.E. 32.
  2. Locations of existing utility lines are based on the best available records and are not guaranteed for accuracy.
  3. Two (2) - 2,000 gal underground storage tanks were once somewhere in this area. Records do not indicate whether they were ever removed.
  4. A single railroad track was once located in Jefferson and Larned. Records do not indicate whether it has been removed.
  5. Existing Impact Rheinator shall be dismantled and moved to E.P.M.D. storage yard at 19th and Michigan by Contractor, incidental to Contract.



CALL MISS DIG 48 HOURS PRIOR TO CONSTRUCTION 647-7344

11	10	9	8	7	6	5	4	3	2	1
----	----	---	---	---	---	---	---	---	---	---





