

STATE OF MICHIGAN DEPARTMENT OF STATE HIGHWAYS

PLANS OF PROPOSED BRIDGE FENCING

GENERAL NOTES

EXCEPT WHERE OTHERWISE INDICATED ON THESE PLANS OR IN THE PROPOSAL AND SUPPLEMENTAL SPECIFICATIONS CONTAINED THEREIN, ALL MATERIALS AND WORKMANSHIP SHALL BE IN ACCORDANCE WITH THE MICHIGAN DEPARTMENT OF STATE HIGHWAYS STANDARD SPECIFICATIONS FOR ROAD AND BRIDGE CONSTRUCTION, 1970 EDITION.

THE DESIGN OF THIS FENCING IS BASED ON THE MICHIGAN DEPARTMENT OF STATE HIGHWAYS SPECIFICATIONS FOR THE DESIGN OF HIGHWAY BRIDGES, 1958 EDITION AND CURRENT AASHTO STANDARD SPECIFICATIONS FOR HIGHWAY BRIDGES.

THE WORK COVERED BY THESE PLANS INCLUDES FURNISHING, FABRICATION, AND INSTALLATION OF THE PROPOSED CHAIN LINK FENCING AS SHOWN. ALL OTHER DETAILS SHOWN ON GENERAL PLAN OF SITE AND STRUCTURE SHEETS ARE OF EXISTING CONDITIONS.



Index

Title Set 1
Drawings 2

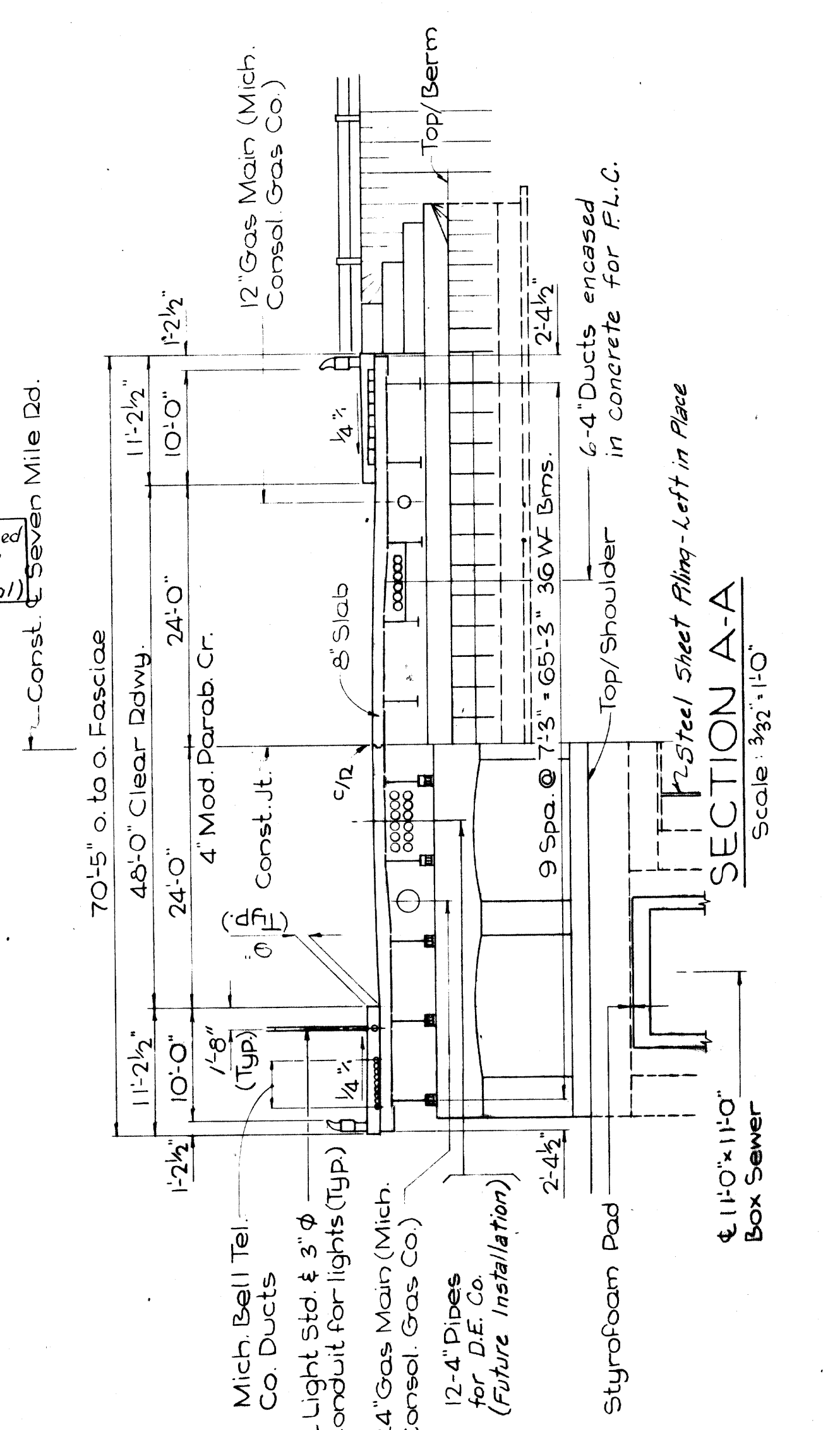
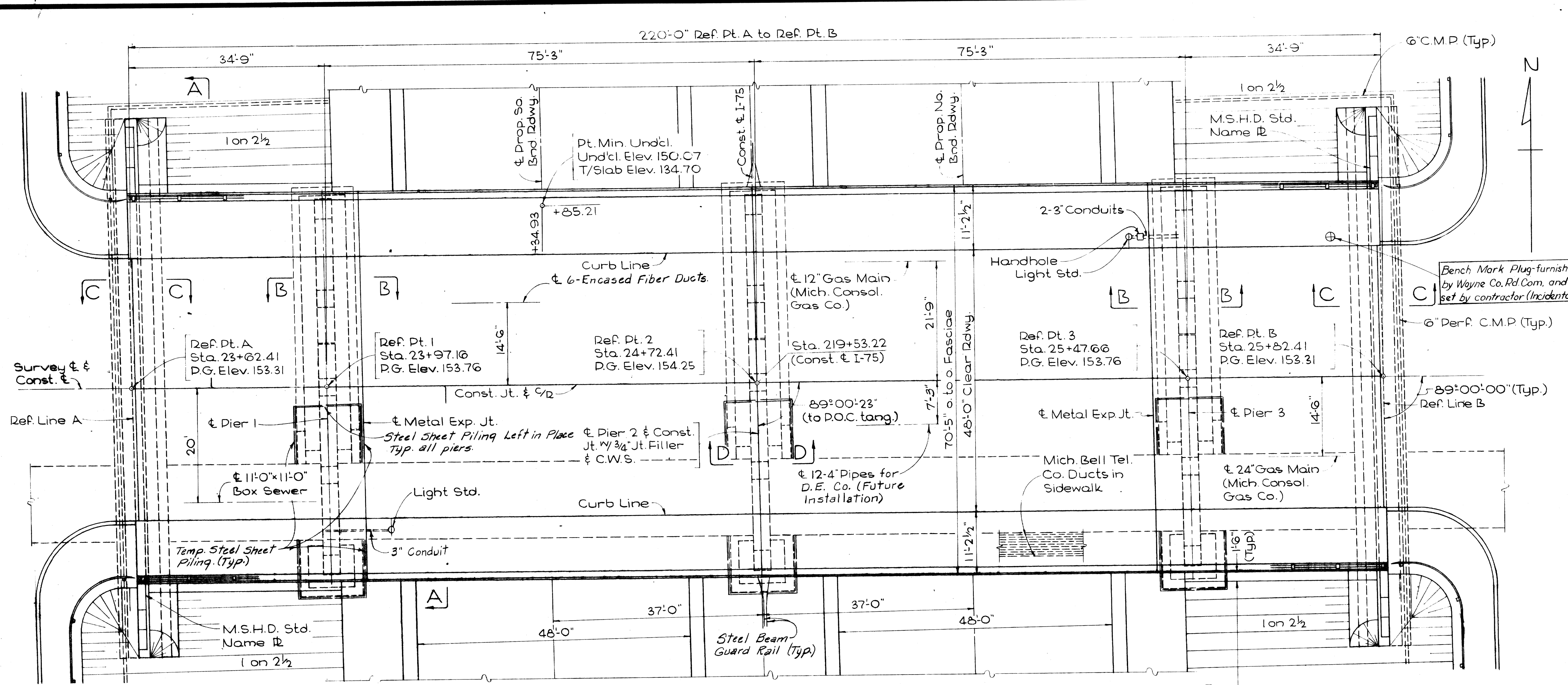
For Inf. only

6. Plans of Structure

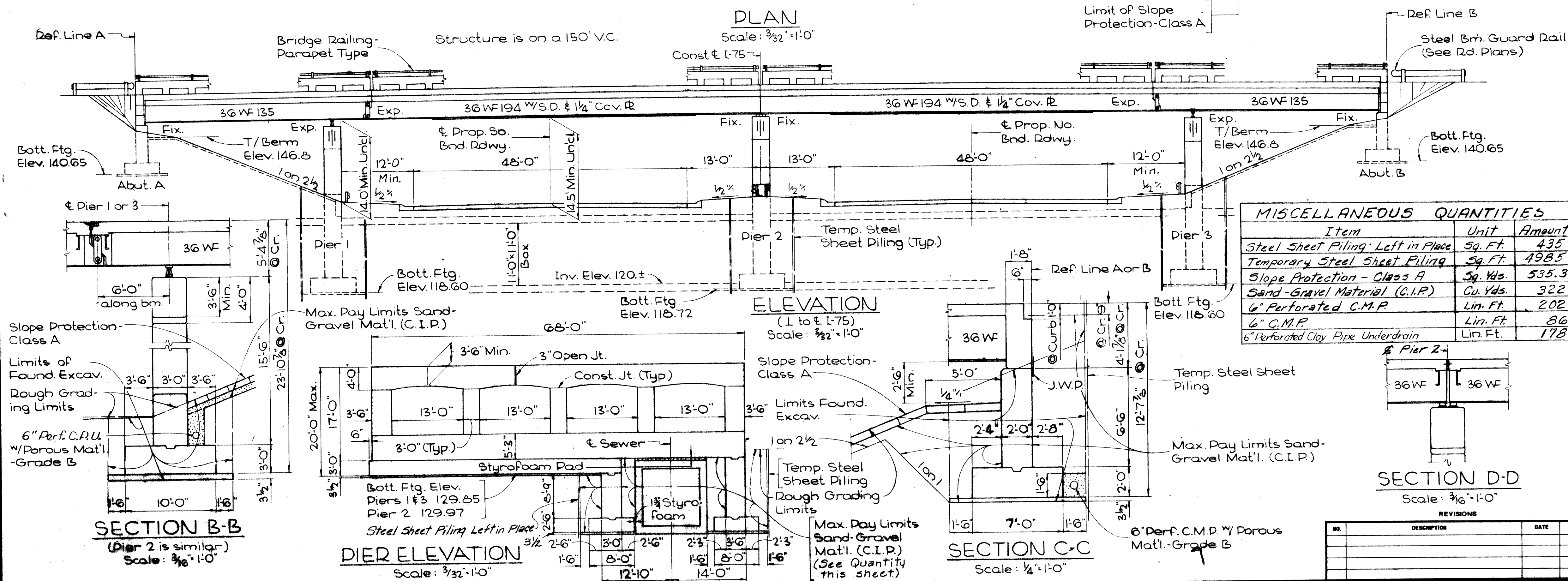
Remove letter from 66 No. (EST.)

ITEM NO. 1		
CONTRACT FOR BRIDGE FENCING		
APPROVALS		
CHECKED _____	ENGINEER-DESIGN SECTION II	DATE _____
RECOMMENDED FOR APPROVAL _____	ENGINEER OF DESIGN	DATE _____
RECOMMENDED FOR APPROVAL _____	TRAFFIC DIVISION	DATE _____
RECOMMENDED FOR APPROVAL _____	CONSTRUCTION DIVISION	DATE _____
RECOMMENDED FOR APPROVAL _____	CHIEF - BUREAU OF ENGINEERING	DATE _____
DEPARTMENT OF STATE HIGHWAYS HENRIK E. STAFSETH - STATE HIGHWAY DIRECTOR		
APPROVED BY _____	DEPUTY STATE HIGHWAY DIRECTOR	DATE _____
PLANS PREPARED BY MICHIGAN DEPARTMENT OF STATE HIGHWAYS	U.S. DEPARTMENT OF TRANSPORTATION FEDERAL HIGHWAY ADMINISTRATION APPROVED BUREAU OF PUBLIC ROADS	
SQUAD _____ FOR THE DIVISION ENGINEER	[Redacted Signature]	
	STATE PROJECT NO.	FEDERAL PROJECT
	PROJECT NO.	SHEET NO.
		1

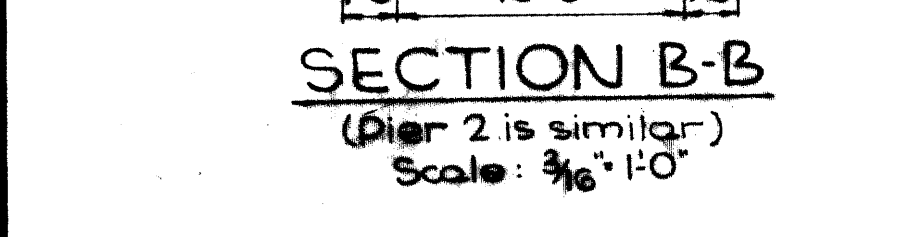
STATE PROJECT NO.



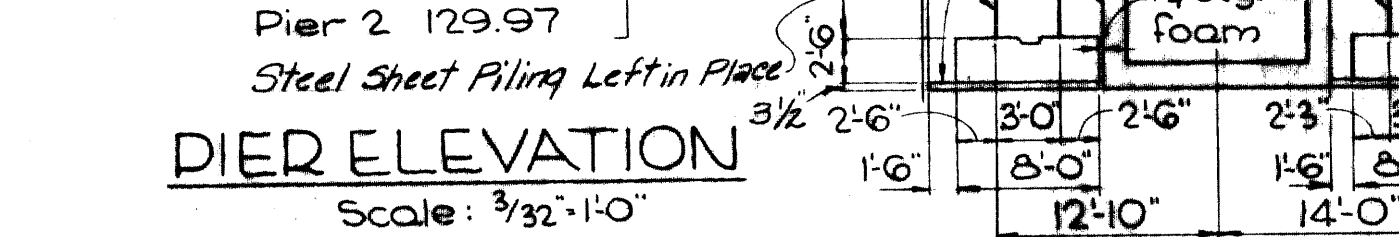
PLAN
Scale: $\frac{3}{32}''=1'-0''$



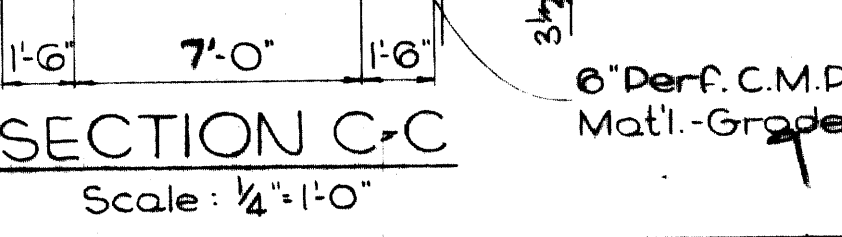
ELEVATION
(1 to E-75)
Scale: $\frac{3}{32}''=1'-0''$



SECTION B-B
(Pier 2 is similar)
Scale: $\frac{3}{16}''=1'-0''$



PIER ELEVATION
Scale: $\frac{3}{32}''=1'-0''$



SECTION C-C
Scale: $\frac{1}{4}''=1'-0''$

SECTION D-D
Scale: $\frac{3}{16}''=1'-0''$

MISCELLANEOUS QUANTITIES		
Item	Unit	Amount
Steel Sheet Piling Left in Place	Sq. Ft.	435
Temporary Steel Sheet Piling	Sq. Ft.	498.5
Slope Protection - Class A	Sq. Yds.	535.3
Sand-Gravel Material (C.I.P.)	Cu. Yds.	322
6" Perforated C.M.P.	Lin. Ft.	202
6" C.M.P.	Lin. Ft.	86
6" Perforated Clay Pipe Underdrain	Lin. Ft.	178

NOTES

The design of this structure is based on the M.S.H.D. Standard Specifications for the Design of Highway Bridges - 1958 edition - H-520-44 loading. Live load plus impact deflection = $\frac{1}{1000}$ of span length (for suspended and anchor spans) and $\frac{1}{350}$ of cantilever length.

Top of roadway slab and top of curbs are parallel to the vertical curve and tangent.

Grouted Riprap as Slope Protection - Class A is not to be used on this project.

The lateral pay limits of steel sheet piling, temporary and left in place, are to be as required and determined by the engineer. The vertical limits are from the bottom of footing to the top of retained earth at the rough grading limits.

Furnishing and placing the styrofoam pads is incidental.

Steel sheet piling shall not be driven until proposed siphon concrete has attained at least 75% of its design strength as determined by the table in Section 5.01.03 of the Standard Specifications.

DRBT
Not for Const.

MICHIGAN STATE HIGHWAY DEPARTMENT
1-75 WALTER P. CHRYSLER EXPRESSWAY CROSSING UNDER 7 MILE ROAD IN THE CITY OF DETROIT.

GENERAL PLAN OF STRUCTURE

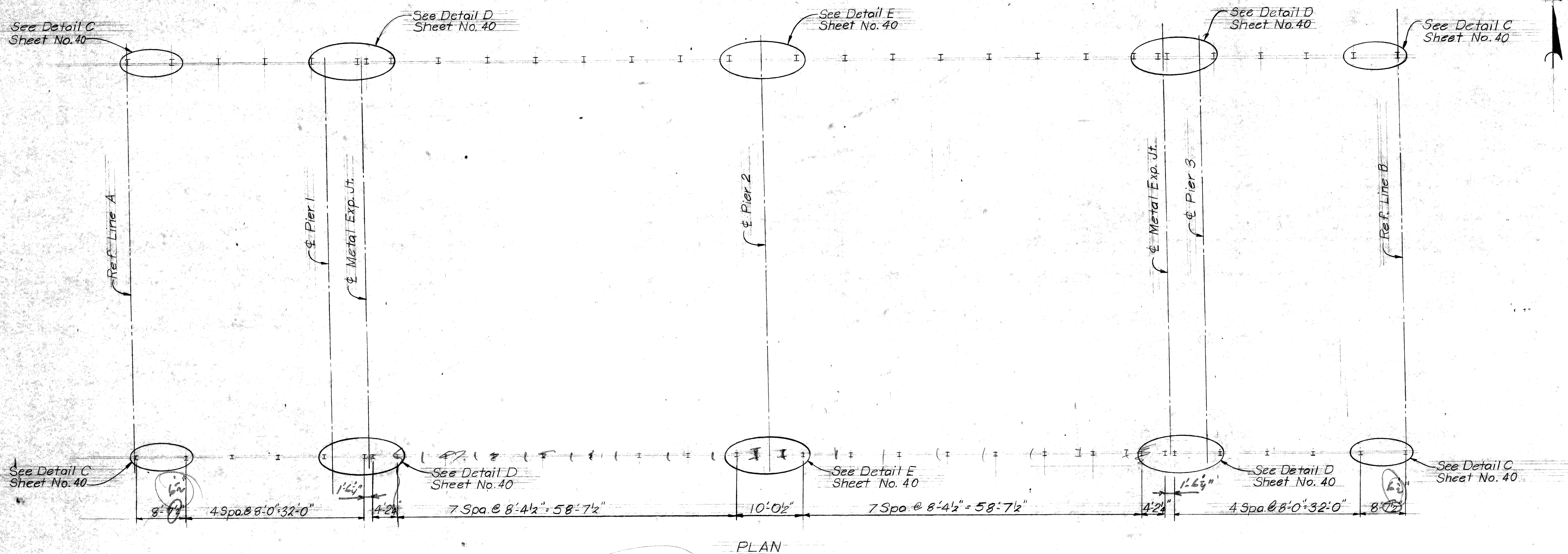
NO.	DESCRIPTION	DATE	BY

APPROVED: *J. H. Hillcom* 9-10-65
DESIGN SUPERVISING ENGINEER

APPROVED: *J. C. Trahan* 3-16-66
DESIGN SUPERVISING ENGINEER

ASST. DESIGN SUPERVISING ENGINEER

NO. 307 of 82252



*Interference
w/ util. post?
Maybe leave*

120" Chain Link Fence and Framing ⁴⁴⁰ 434 Lin. Ft. Estimated
 MICHIGAN DEPARTMENT OF STATE HIGHWAYS
 SEVEN MILE ROAD OVER WALTER P. CHRYSLER FREEWAY

PLANS PREPARED BY
 CITY OF DETROIT
 DEPARTMENT OF PUBLIC WORKS
 CITY ENGINEERS OFFICE

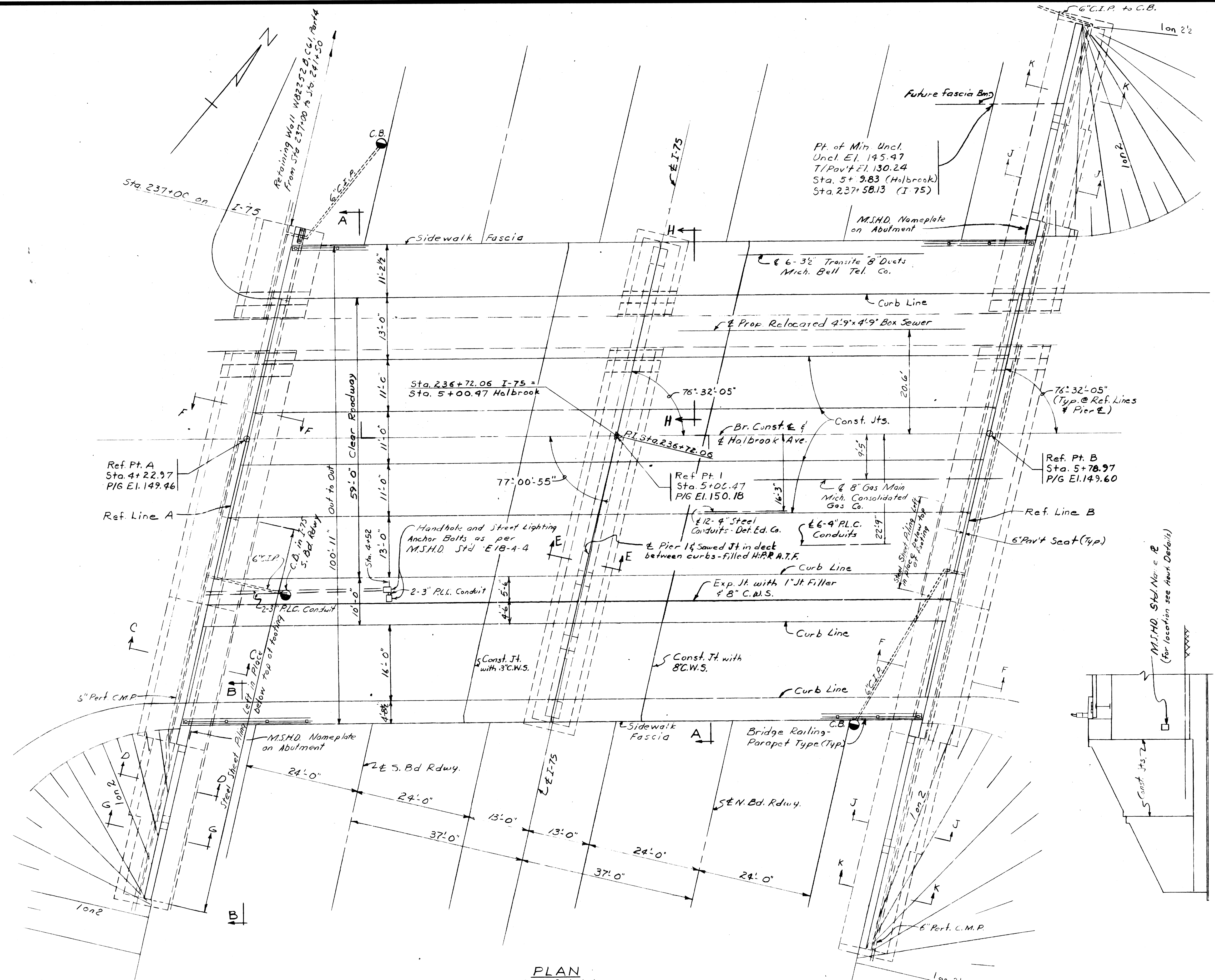
APPROVED _____
 STRUCTURAL ENGINEER

JOB No.
 05168 D

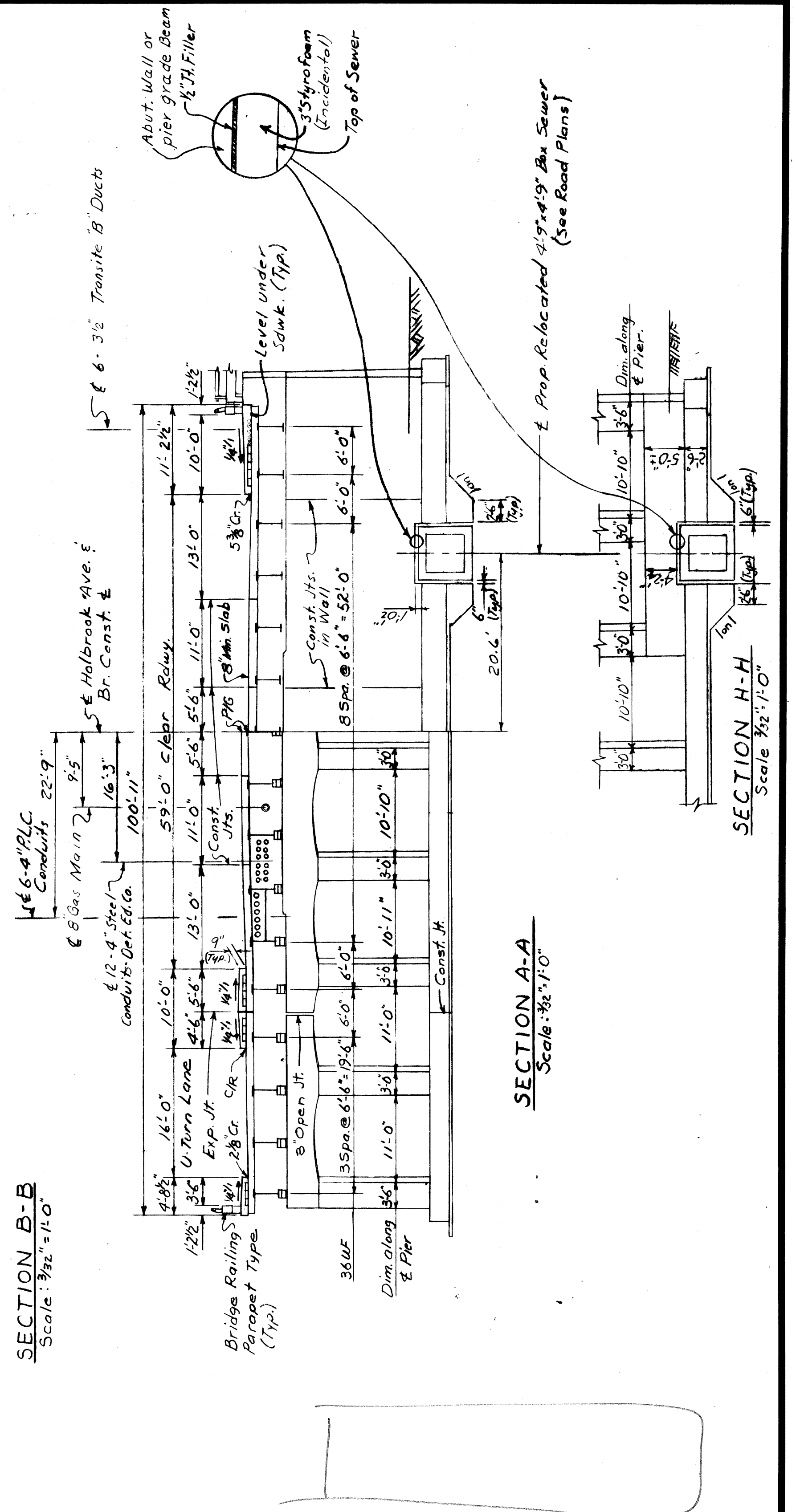
REVISIONS			
NO.	DESCRIPTION	DATE	BY

SQUAD BOSS	Mc Cook	4/73
DRAWN BY	L. G.	4-73
CHECKED BY	J. M.	
SHEET 4 of 40		

S07 of 82252



PLAN Scale: 3/32" = 1'-0"



SECTION B-B Scale: 3/32" = 1'-0"

SECTION A-A Scale: 3/32" = 1'-0"

SECTION H-H Scale: 3/32" = 1'-0"

Work this sheet with sheet 6

MICHIGAN STATE HIGHWAY DEPARTMENT
 I-75 KING HOLBROOK IN CITY OF DETROIT
GENERAL PLAN OF STRUCTURE

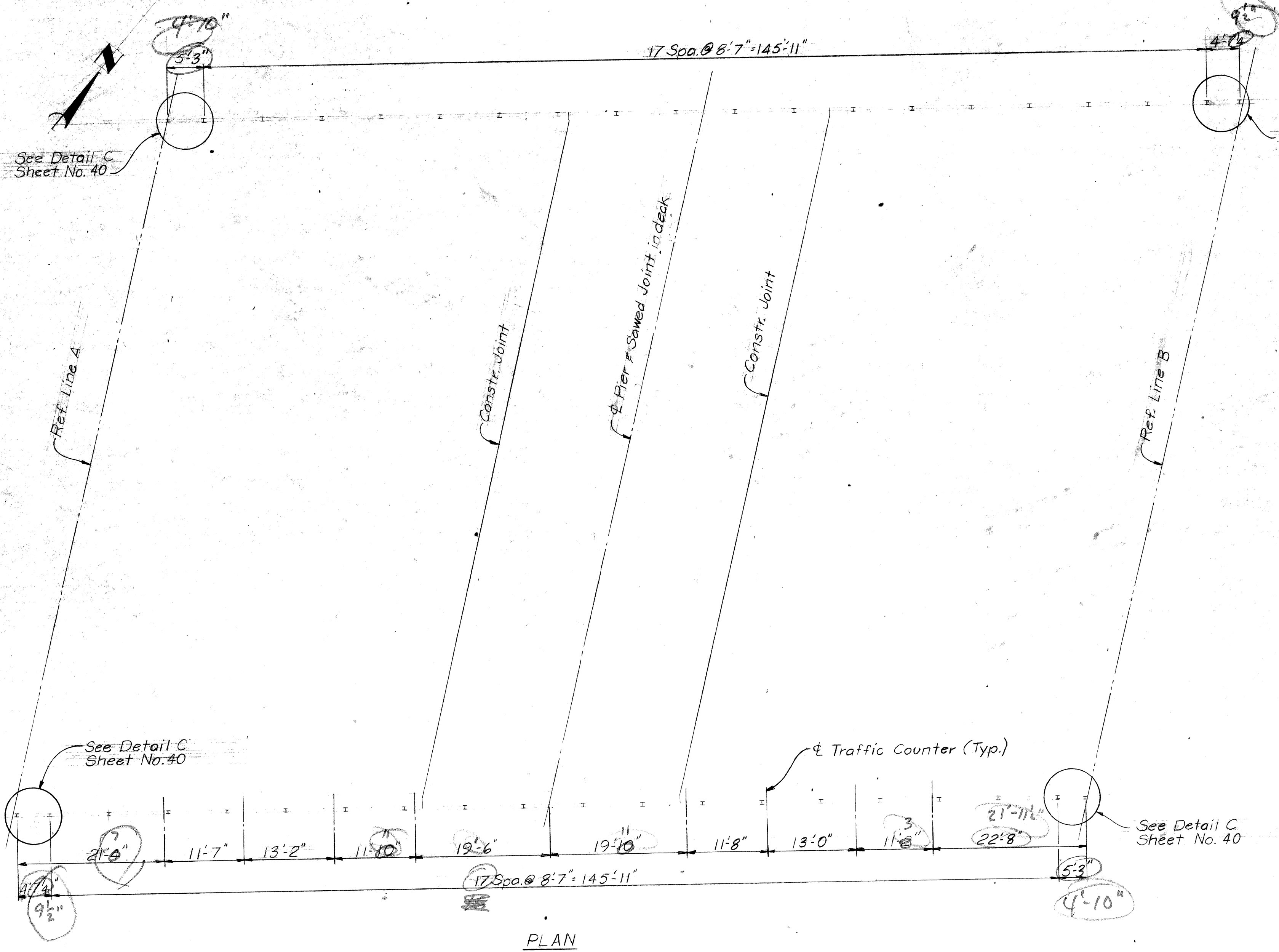
NO.	DESCRIPTION	DATE	BY

APPROVED: *J. H. Reiner* 2-15-65
 ASST. DESIGN SUPERVISING ENGINEER

APPROVED: *J. C. ...* 2-15-65
 DESIGN SUPERVISING ENGINEER

SQUAD BOSS: Emery 3-1-65
 DRAWN BY: LJE 9-25-64
 CHECKED BY: K.L.H. 11-19-64
 SHEET: 5 of 40

S05 of 82252 B



See Detail C Sheet No. 40

See Detail C Sheet No. 40

Ref. Line A

Ref. Line B

See Detail C Sheet No. 40

See Detail C Sheet No. 40

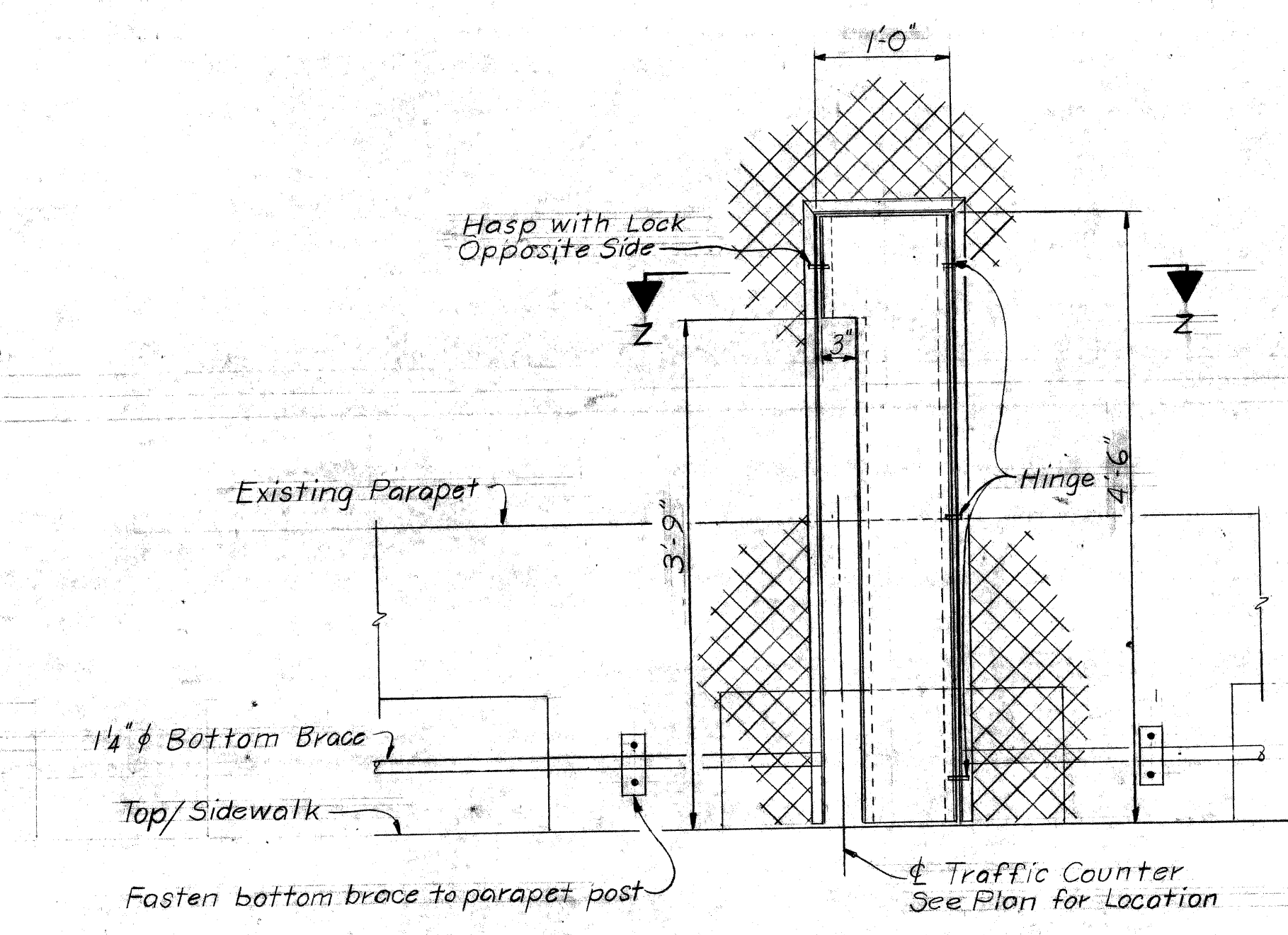
PLAN

Note:
Field check location of Traffic Counters before fabrication
Traffic Counters may be relocated $\pm 4'$, if necessary, to facilitate fencing erection.

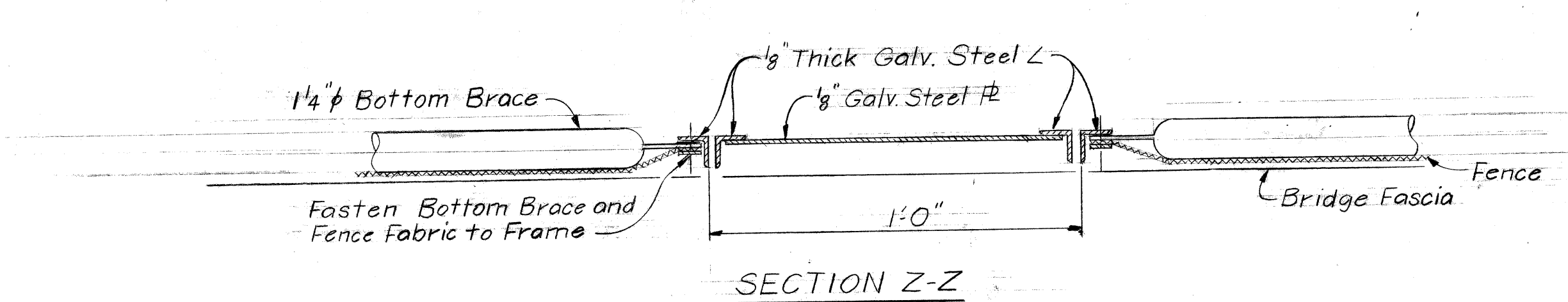
19-6
11-11
31-5
13-2
44-7
11-7
52-2
41-7
77-9

19-11
11-8
31-7
13
44-7
11-3
55-10
77-9
133-7
145-11
4-10
4-92
155-62
77-94
77-94
155-62

145-11
8-62
1-3
155-62
-2
155-62 CL



ELEVATION



SECTION Z-Z

DETAILS SERVICE GATE FOR TRAFFIC COUNTERS

120" Chain Link Fence and Framing 212 Lin. Ft. *Estimated*
312
MICHIGAN DEPARTMENT OF STATE HIGHWAYS
HOLBROOK AVENUE OVER WALTER P. CHRYSLER FREEWAY

PLANS PREPARED BY
CITY OF DETROIT
DEPARTMENT OF PUBLIC WORKS
CITY ENGINEERS OFFICE

JOB No.
05168 C

REVISIONS			
NO.	DESCRIPTION	DATE	BY

SQUAD BOSS	L.G.	4-73
DRAWN BY		
TRACED BY		
CHECKED BY		
SHEET 6 OF 40		

S05 of 82352