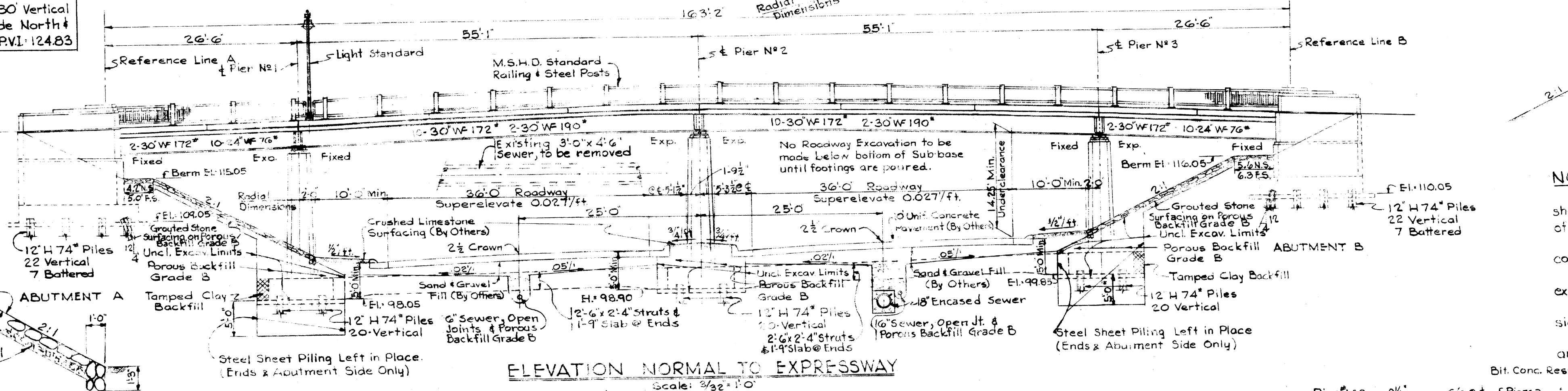


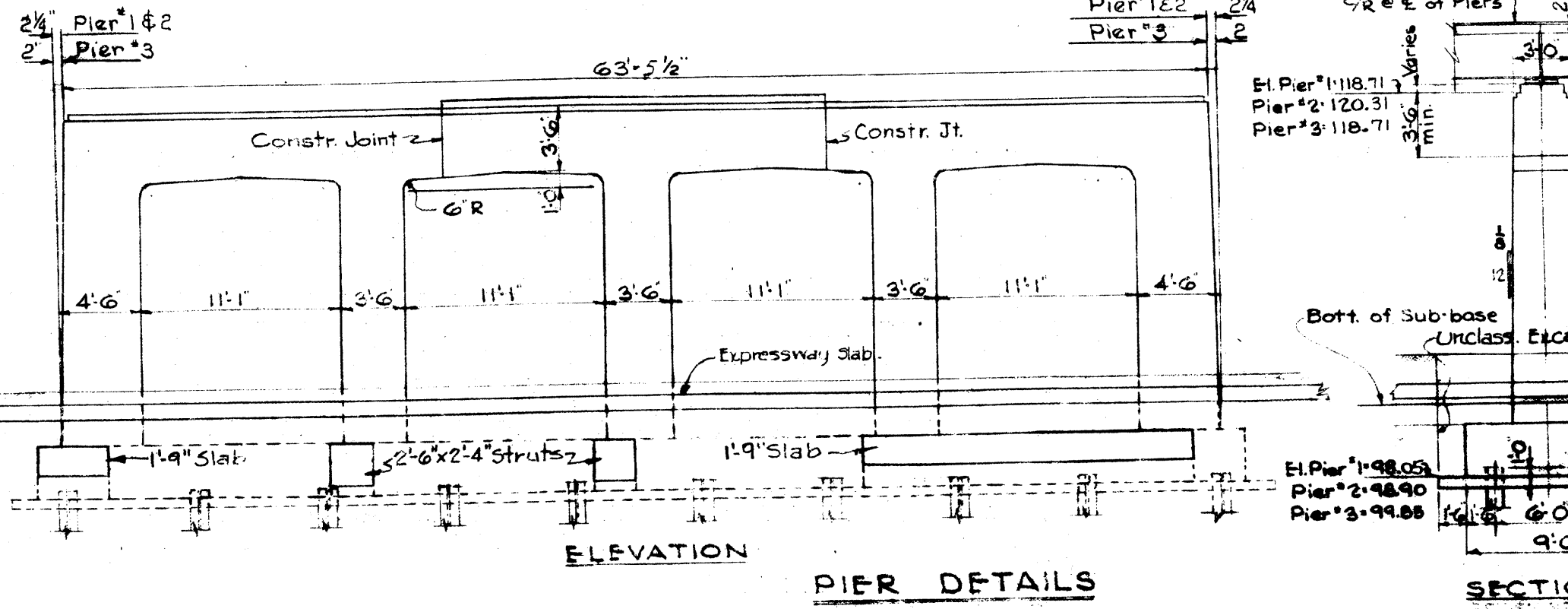
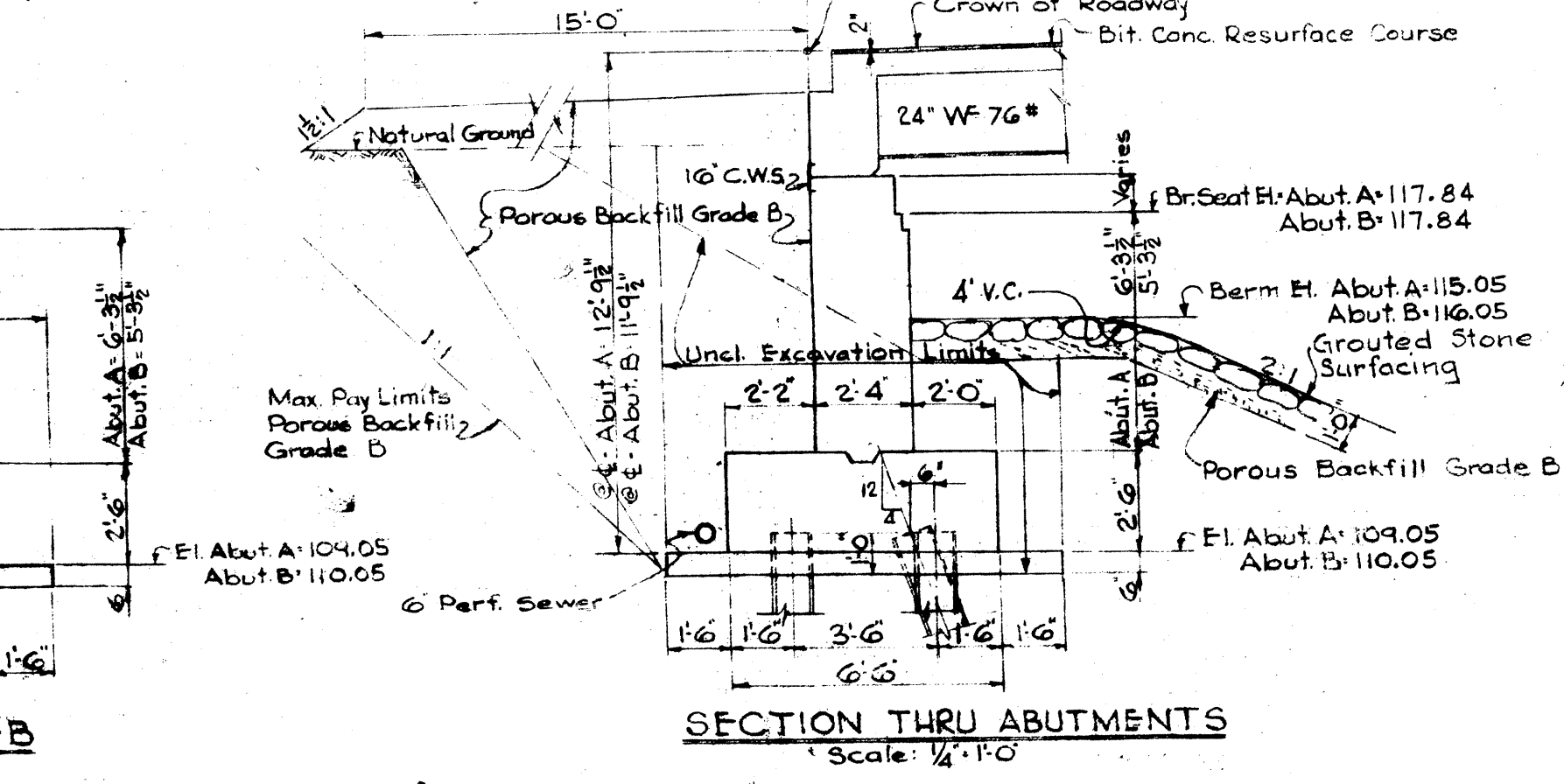
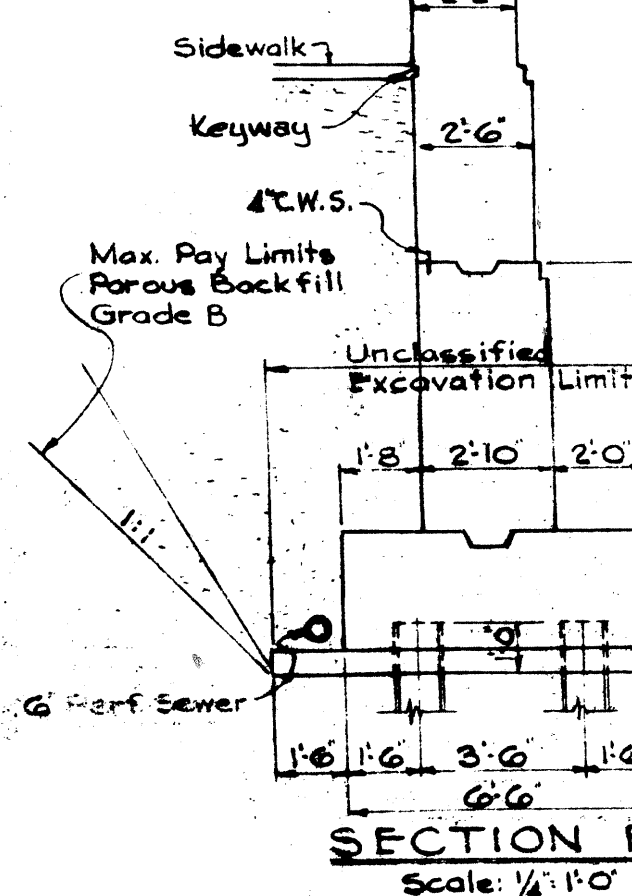
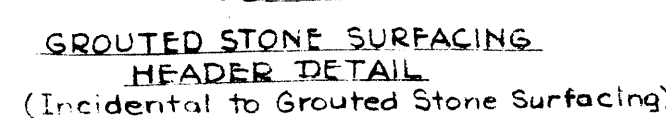
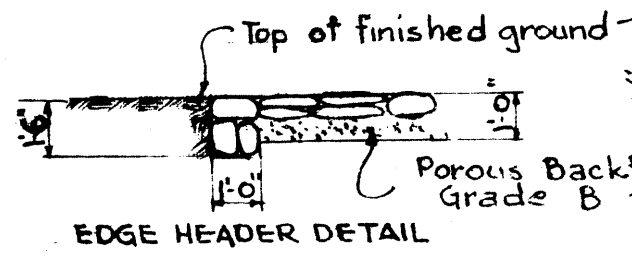
MISCELLANEOUS QUANTITIES

ITEM	UNIT	AMOUNT
POROUS BACKFILL (GR. B(L.M.)	CU.YDS.	1,420
6" SEWER	LIN. FT.	140
6" OPEN JOINT SEWER	LIN. FT.	202
GRouted STONE SURFACING	SQ. YDS.	405

Note: Structure is on an 80' Vertical Curve. Tangents = 3.5% Grade North + South from Sta. 9+95.39. E.I. PVI: 124.83



NOTES:
 Steel Sheet Piling Left in Place shall be of the continuous interlock type. It shall weigh not less than 22 lbs per sq. ft. See supplemental specifications regarding furnishing of Steel Sheet Piling.
 Steel Sheet Piling left in Place shall be driven to its final position before adjacent concrete is poured.
 Foundation excavation below the lower limits of roadway excavation (Bott. of Sub-base), except for struts, must be made in cofferdams.
 Temporary Sheet Piling shall be used entirely around Pier #2 and along the roadway side of Piers #1 & #3.
 Temporary Sheet Piling shall be driven not to exceed 1 foot below bottoms of sub-footings and shall be left in place until ready to construct concrete struts.
 Only one span is to be opened at a time for pouring struts.
 18" Encased Sewer shall not be placed until after all struts have been completed & backfilled.



HAZLET & EMMAL CONSULTING ENGINEERS FILE #712

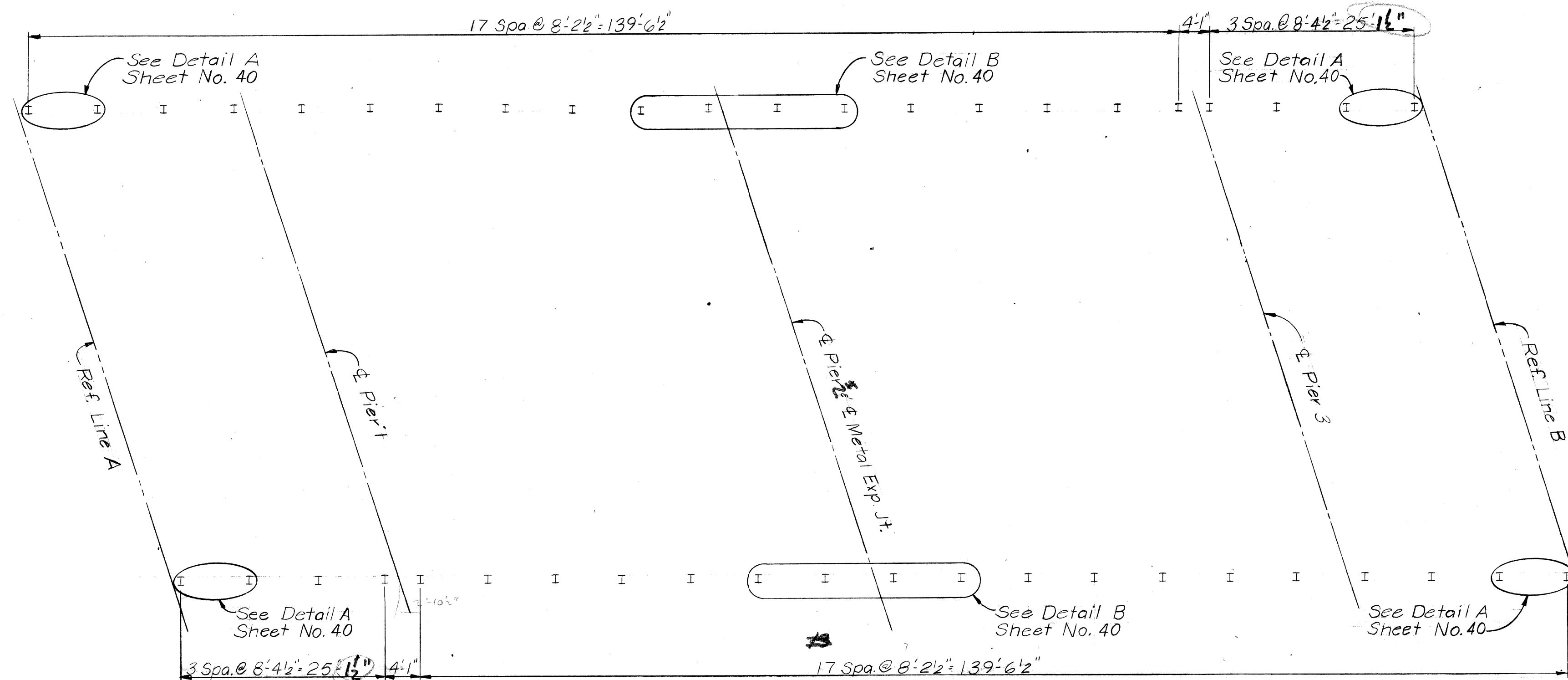
EDSEL FORD EXPRESSWAY
 CROSSING JUNCTION AVE. IN THE CITY OF DETROIT

GENERAL PLAN OF STRUCTURE

APPROVED: *[Signatures]*

DATE: 8-15-50

SCALE: B-15, B-19, B-20, B-21, B-22, B-23, B-24, B-25, B-26, B-27, B-28, B-29, B-30, B-31, B-32, B-33, B-34, B-35, B-36, B-37, B-38, B-39, B-40, B-41, B-42, B-43, B-44, B-45, B-46, B-47, B-48, B-49, B-50, B-51, B-52, B-53, B-54, B-55, B-56, B-57, B-58, B-59, B-60, B-61, B-62, B-63, B-64, B-65, B-66, B-67, B-68, B-69, B-70, B-71, B-72, B-73, B-74, B-75, B-76, B-77, B-78, B-79, B-80, B-81, B-82, B-83, B-84, B-85, B-86, B-87, B-88, B-89, B-90, B-91, B-92, B-93, B-94, B-95, B-96, B-97, B-98, B-99, B-100



PLAN

$$\begin{array}{r} 25-1 1/2 \\ 124-9 \\ \hline 168-9 \\ 139-6 1/2 \end{array}$$
 168-11 168
 338

120" Chain Link Fence and Framing 33% Lin. Ft. Rstimated

MICHIGAN DEPARTMENT OF STATE HIGHWAYS

JUNCTION STREET OVER EDESEL FORD FREEWAY

REVISIONS			
NO.	DESCRIPTION	DATE	BY

SQUAD BOSS DRAWN BY L.G. TRACED BY CHECKED BY SHEET 12 OF 40	4-23 S09 of 82023
--	----------------------

PLANS PREPARED BY
CITY OF DETROIT
 DEPARTMENT OF PUBLIC WORKS
 CITY ENGINEERS OFFICE

APPROVED _____
 STRUCTURAL ENGINEER

JOB No.
05166