

PLAN

164-4
 164-4
 328-8
 4
 329'

120" Chain Link Fence and Framing 329 Lin. Ft. Estimated

MICHIGAN DEPARTMENT OF STATE HIGHWAYS
 LINWOOD AVENUE OVER JOHN C. LODGE FREEWAY

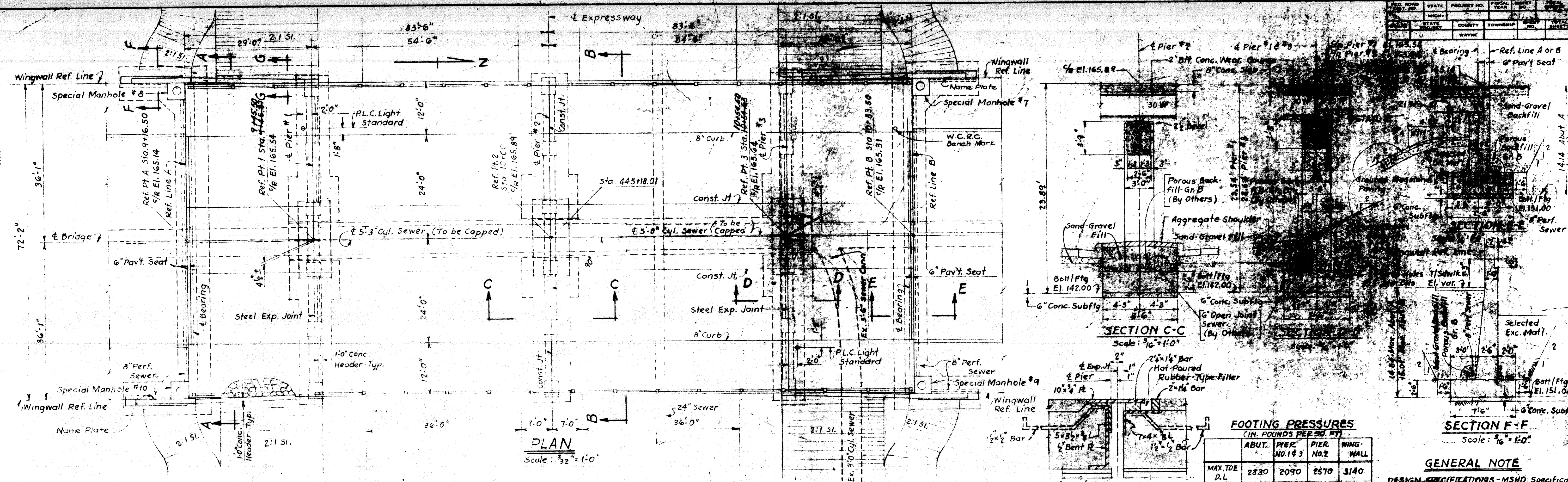
PLANS PREPARED BY
CITY OF DETROIT
 DEPARTMENT OF PUBLIC WORKS
 CITY ENGINEERS OFFICE

APPROVED _____
 STRUCTURAL ENGINEER

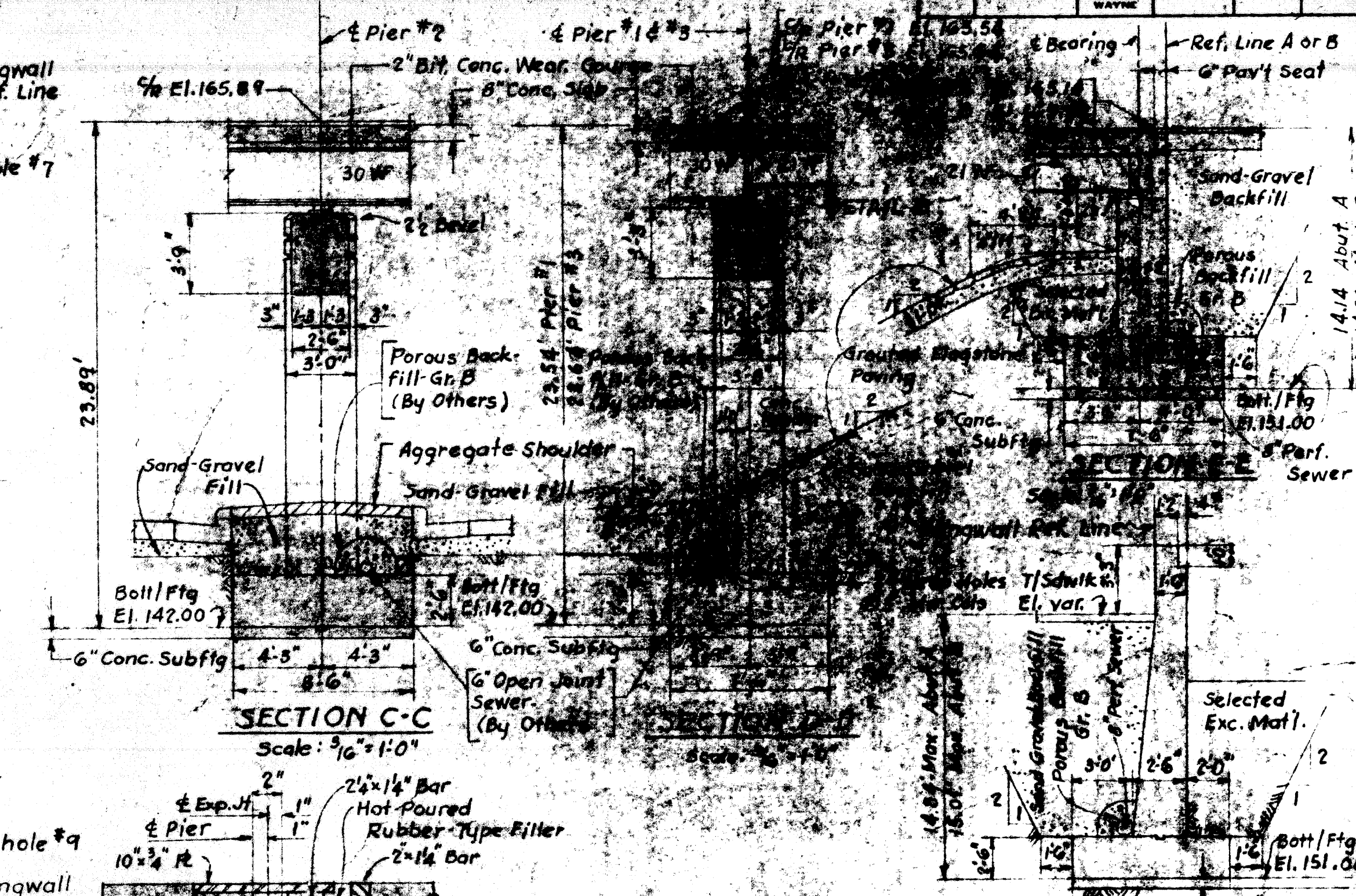
JOB No.
05165

REVISIONS			
NO.	DESCRIPTION	DATE	BY

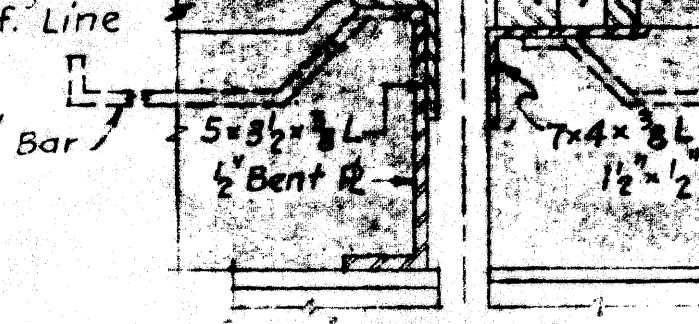
SQUAD BOSS		
DRAWN BY	L.G.	4-73
TRACED BY		
CHECKED BY		
SHEET 37 OF 40		
S19 of 82112		



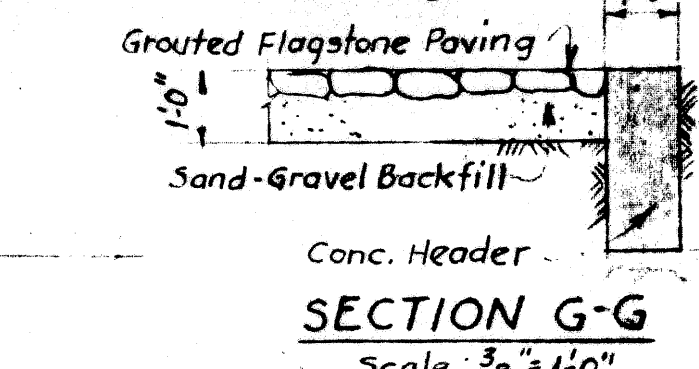
PLAN
Scale: 3/32" = 1'-0"



SECTION C-C
Scale: 3/16" = 1'-0"



DETAIL B
Scale: 1/2" = 1'-0"

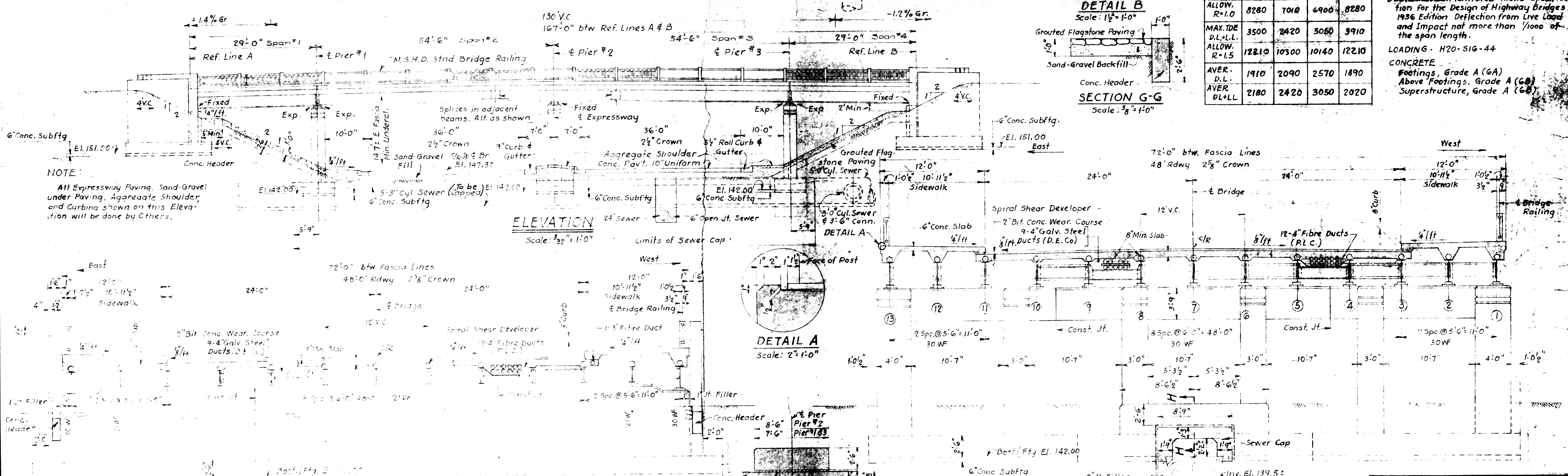


SECTION G-G
Scale: 3/8" = 1'-0"

FOOTING PRESSURES
(IN POUNDS PER SQ. FT.)

	ABUT.	PIER NO. 1 & 3	PIER NO. 2	WING-WALL
MAX. TDE D.L.	2830	2090	2570	3140
ALLOW. R=1.0	8280	7018	6900	8280
MAX. TDE D.L.+L.L.	3500	2420	3060	3910
ALLOW. R=1.5	12210	10300	10140	12210
AVER. D.L.	1910	2090	2570	1890
AVER. D.L.+L.L.	2180	2420	3050	2020

GENERAL NOTE
DESIGN SPECIFICATIONS - MSHD Specification for the Design of Highway Bridges, 1956 Edition. Deflection from Live Load and Impact not more than 1/1000 of the span length.
LOADING - H20-S16-44
CONCRETE -
Footings, Grade A (6A)
Above Footings, Grade A (6B)
Superstructure, Grade A (6C)



ELEVATION
Scale: 3/32" = 1'-0"

DETAIL A
Scale: 2" = 1'-0"

SECTION A-A
Scale: 1/2" = 1'-0"

SECTION H-H
Scale: 3/16" = 1'-0"

SECTION B-B
Scale: 3/16" = 1'-0"

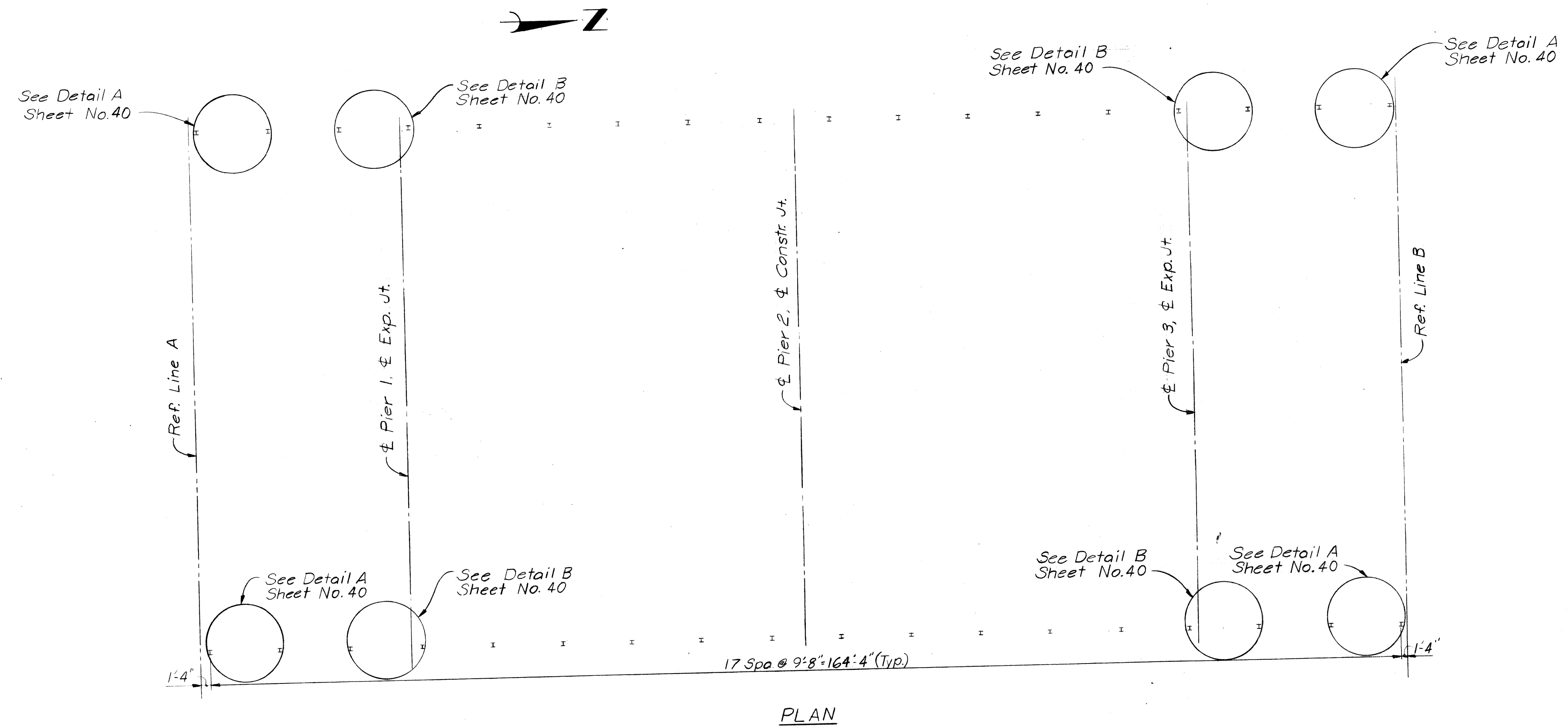
Field Revision: Pier stationing revised

NO.	REVISIONS
1	Field Revision: Pier stationing revised

DRAWN BY: MT
CHECKED BY: [Signature]
DATE: 6-5-53
APPROVED: [Signature]
ENGINEER OF DESIGN, STRUCTURES AND EXPRESSWAYS

BOARD OF
WAYNE COUNTY ROAD COMMISSIONERS
DETROIT, MICHIGAN
MICHAEL J. O'BRIEN
JOHN P. O'HARA
CHARLES L. WILSON

JOHN C. LODGE EXPRESSWAY
LINWOOD AVENUE CROSSING
GENERAL PLAN OF STRUCTURE
STATE PROJECT: 82-128
COUNTY JOB: 849
ISSUE NO. 3
DATE: 8/1/54
36 of 40



120" Chain Link Fence and Framing 329 Lin. Ft. Estimated

MICHIGAN DEPARTMENT OF STATE HIGHWAYS

LINWOOD AVENUE OVER JOHN C. LODGE FREEWAY

PLANS PREPARED BY
CITY OF DETROIT
 DEPARTMENT OF PUBLIC WORKS
 CITY ENGINEERS OFFICE

APPROVED: T.E.M. Bowen
 STRUCTURAL ENGINEER

JOB No.
05165

REVISIONS			
NO.	DESCRIPTION	DATE	BY

SQUAD BOSS	<u>M. G. Gault</u>	5-73
DRAWN BY	<u>E. G.</u>	4-73
CHECKED BY	<u>J. M.</u>	4-73
SHEET 37 OF 40		

S19 of 82112