

FENCING NOTES

ALL WORK SHALL CONFORM TO MDOT STANDARD SPECIFICATIONS FOR CONSTRUCTION, 1979 EDITION

ALL FENCE FABRIC SHALL BE GALVANIZED #9 GAGE WITH A 2" MESH AND WITH KNUCKLING AT THE BOTTOM SELVA6E.

THE POSTS SHALL BE 2 1/4" X 2" GALVANIZED H-POSTS WEIGHING 4.1 P.L.F. ROUND POSTS HAVING A 2 1/8" OD WEIGHING 5.79 P.L.F., GALVANIZED, MAY BE USED WITH SIMILAR CONNECTION DETAILS.

THE NOMINAL 1 1/4" BRACES SHALL BE 1 3/8" OD. STEEL PIPE OR TUBING WEIGHING 22.7 P.L.F. GALVANIZED

ALL POSTS AND TUBING SHALL BE FURNISHED WITH THE MANUFACTURERS STANDARD CONNECTIONS AND ITS MINIMUM WEIGHT SHALL BE WITHIN 5% OF THAT SPECIFIED.

POSTS AND TUBING SHALL BE BENT IN THE SHOP AS SHOWN ON THE PLANS.

ALL COMPONENTS ARE TO BE GALVANIZED. BOLTS, NUTS AND WASHERS ARE TO BE GALVANIZED IN ACCORDANCE WITH ASTM A 153.

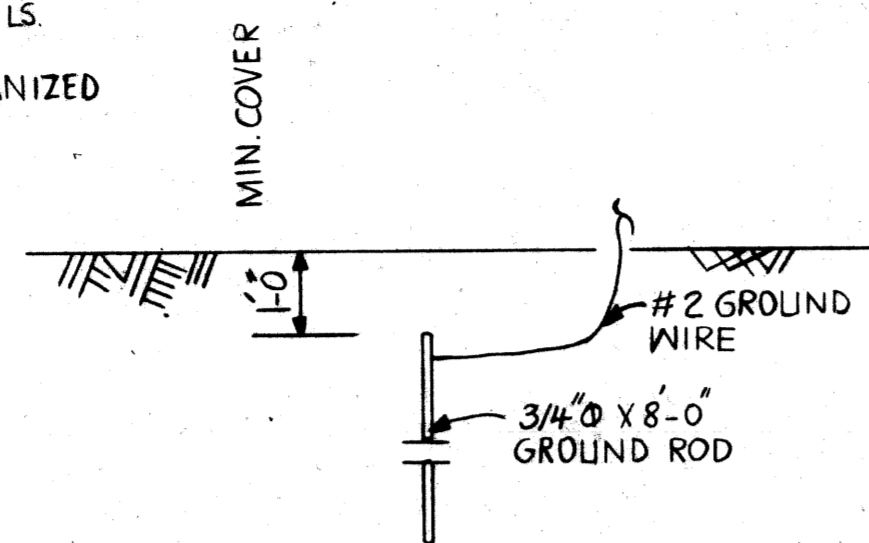
TENSION BARS SHALL BE 3/4" X 1/4" GALVANIZED STEEL.

CONTRACTOR SHALL VERIFY FIELD CONDITIONS BEFORE FABRICATION.

CARE IS TO BE TAKEN IN PLACING EXPANSION BOLTS AND BRACKETS SO AS TO INSURE THAT THE BRACKETS HOLD THE POSTS FIRMLY AGAINST CONCRETE. SHIM IF NECESSARY.

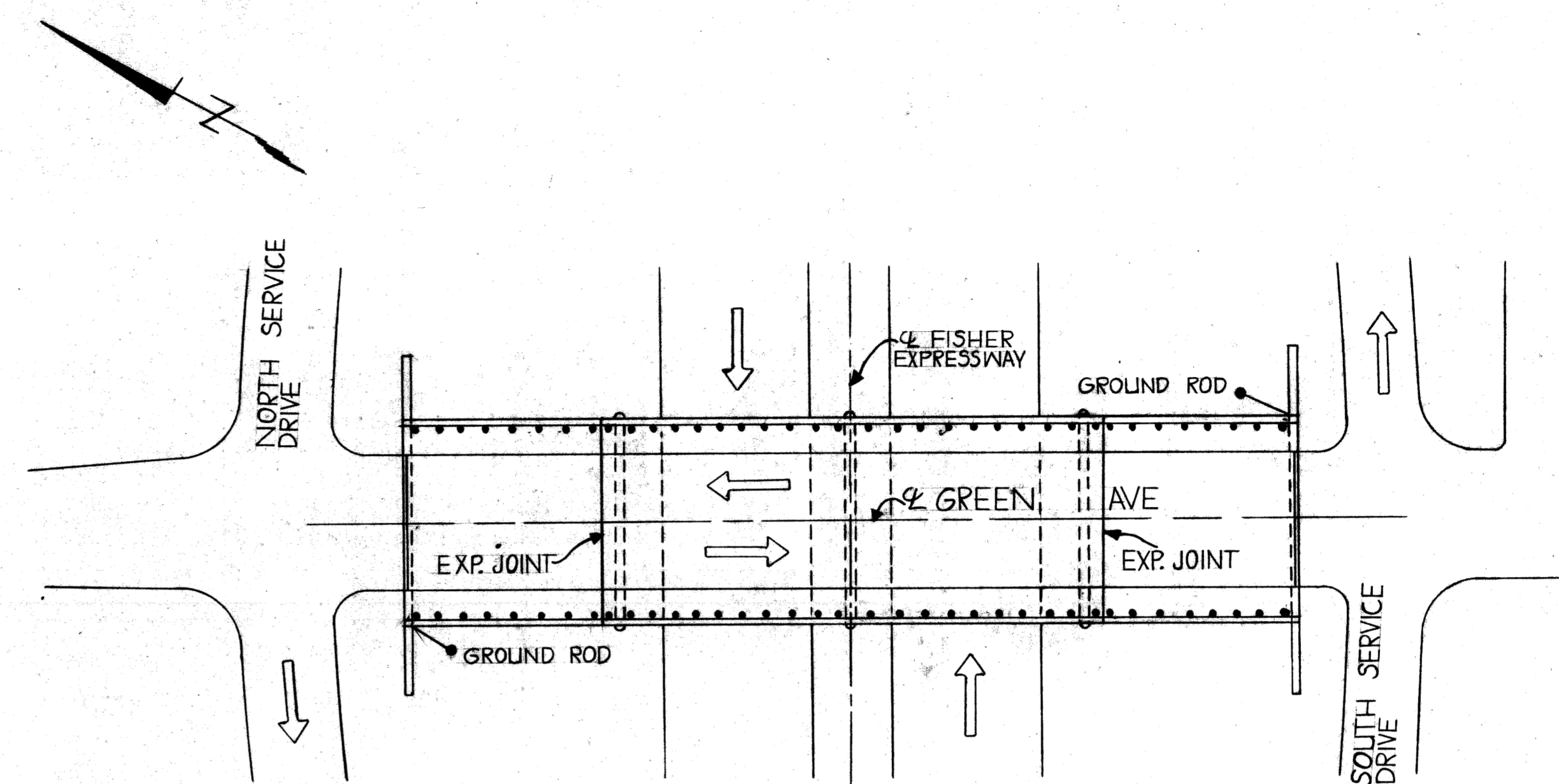
PEDESTRIAN FENCING STRUCTURES SHALL INCLUDE THE FABRIC, POSTS, BRACES, EXPANSION BOLTS, BRACKETS AND ALL SUITABLE CONNECTIONS AND FITTINGS.

1/2" EXPANSION BOLTS SHALL BE PHILLIPS RED HEAD GALVANIZED WEDGE ANCHORS W/5 1/2" G OR APPROVED EQUAL.

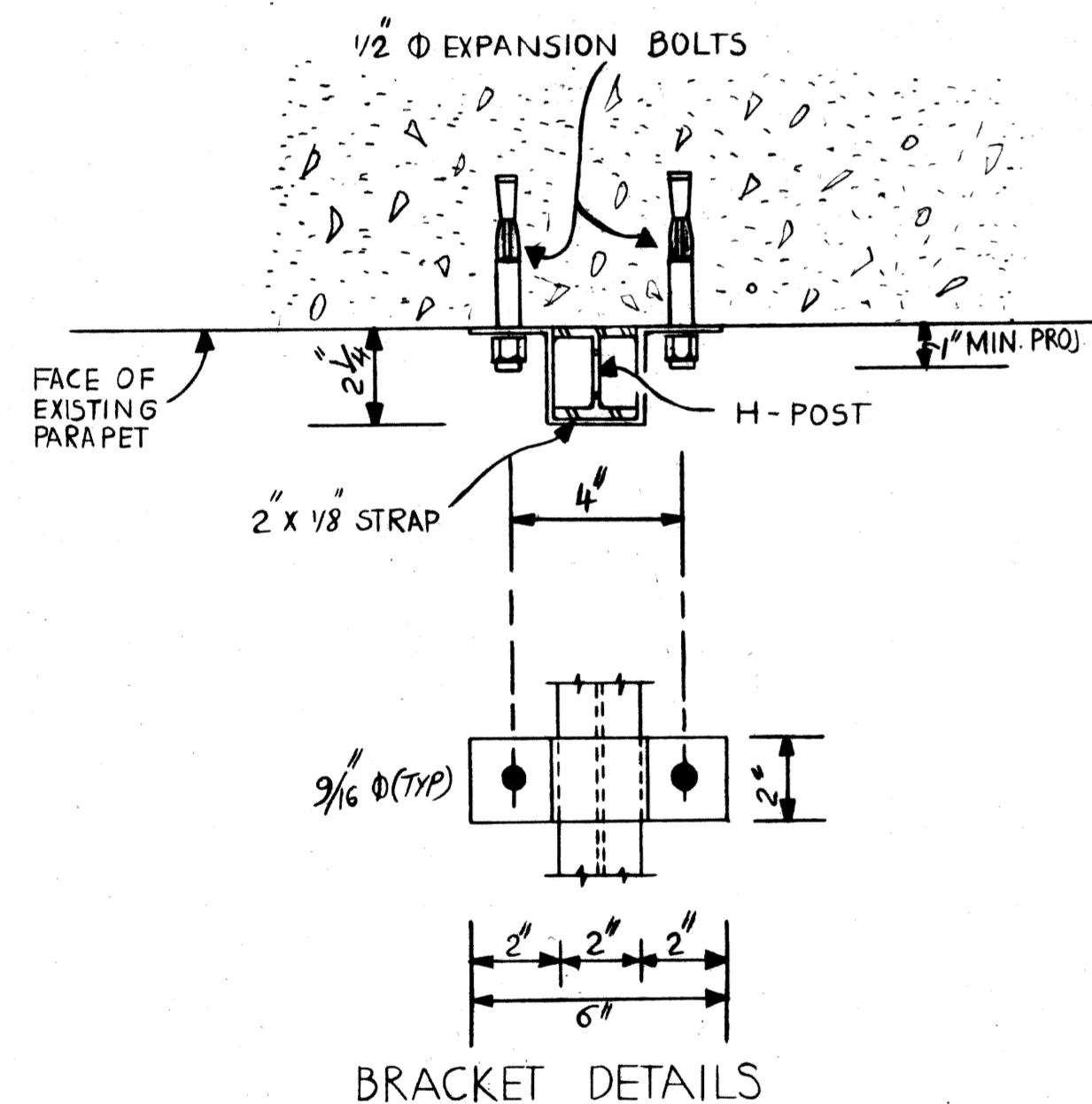
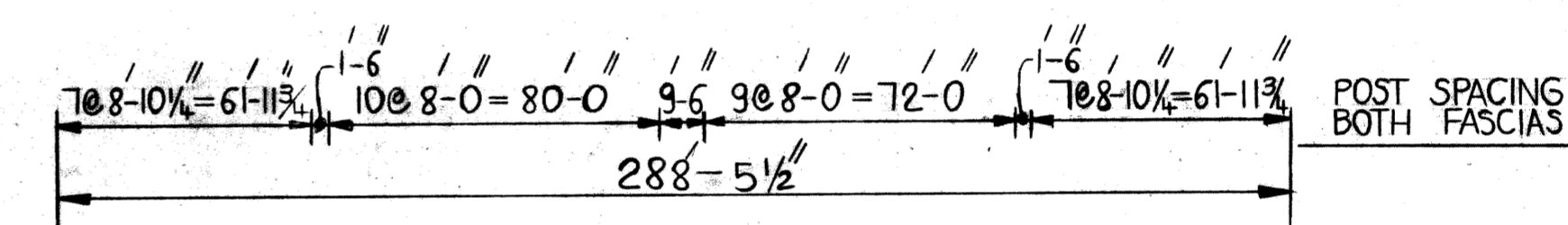


1. ALL UNDERGROUND CONNECTIONS SHALL BE CALDWELD THERMITE WELD, GAS OR ARC WELD.
2. EXPOSED CONNECTIONS MAY BE SPLIT BOLT OR CLAMP TYPE.
3. GROUND WIRE SHALL BE #2 AWG STRANDED SOFT DRAWN COPPER WIRE.

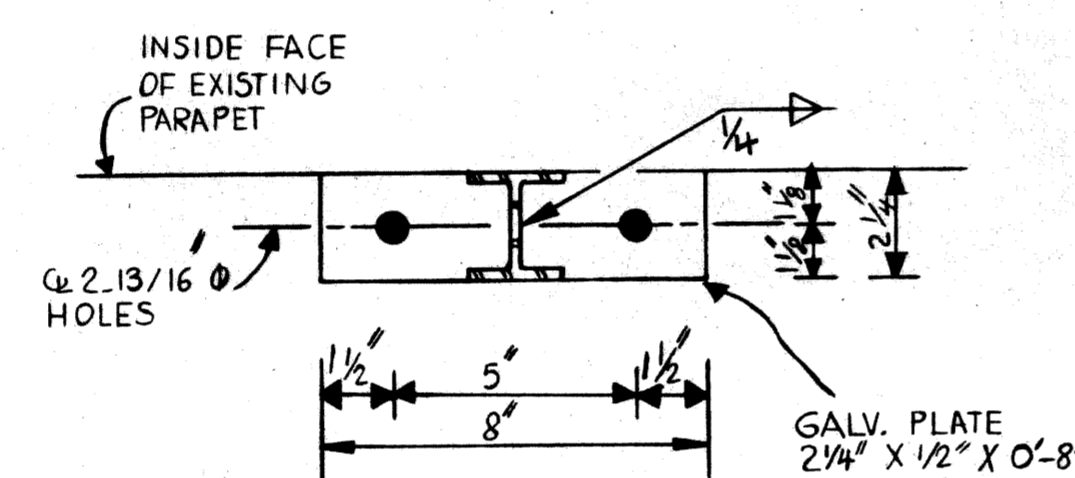
GROUNDING DETAIL



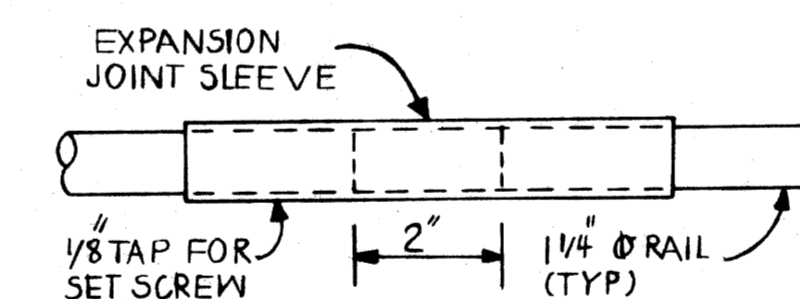
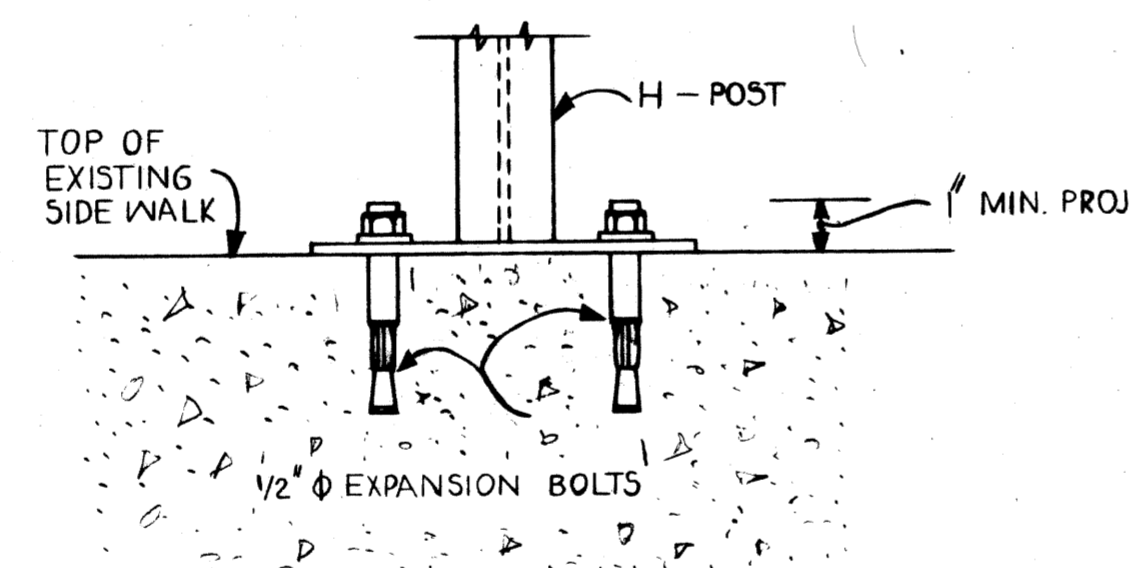
PLAN



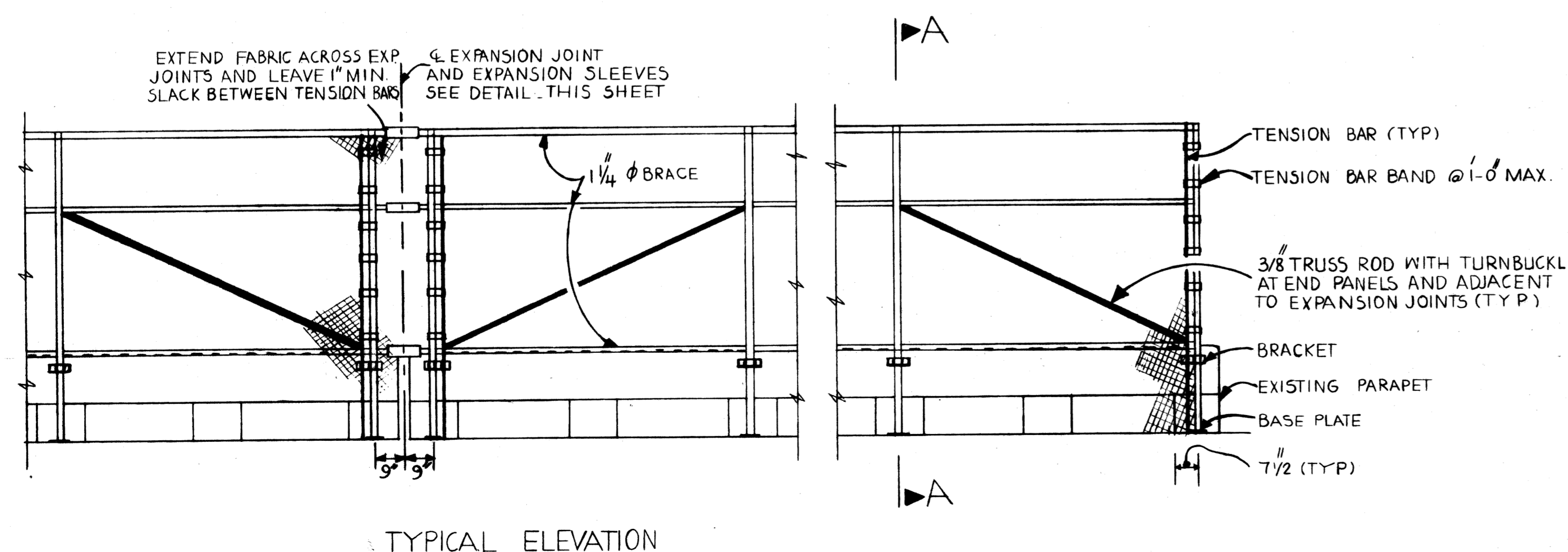
BRACKET DETAILS



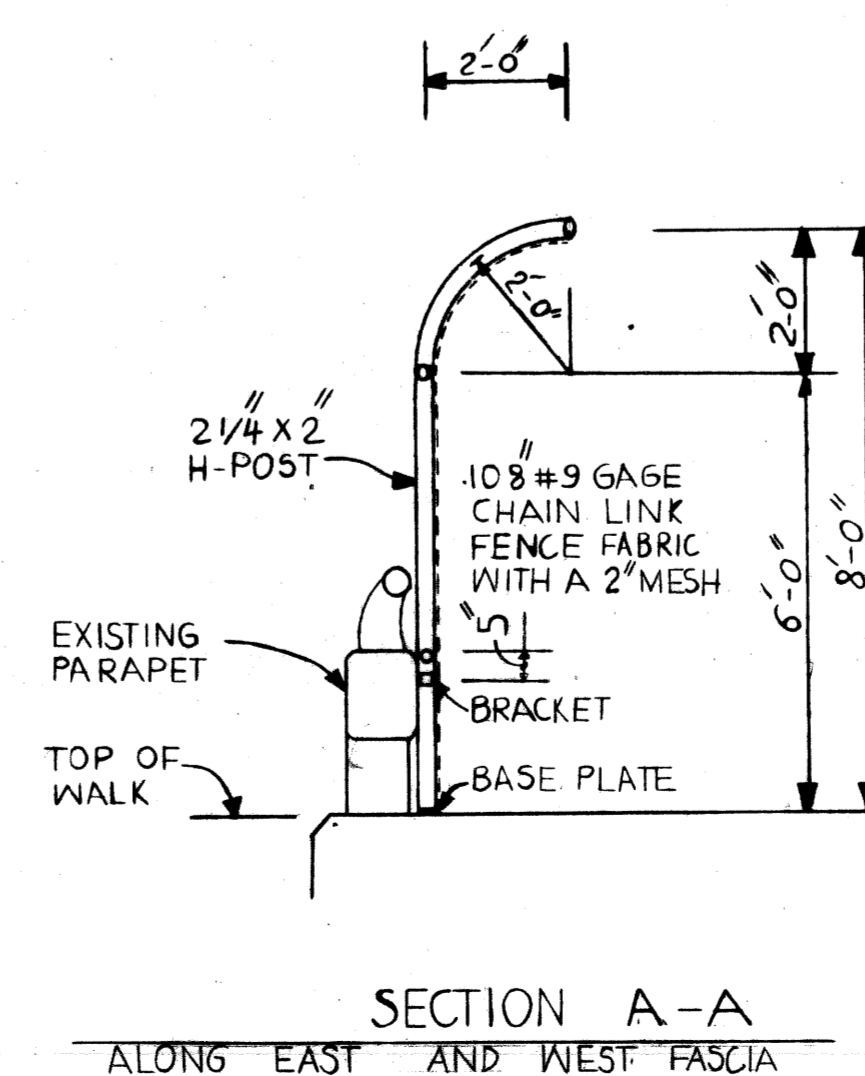
BASE PLATE DETAILS



EXPANSION SLEEVE DETAIL



TYPICAL ELEVATION



SECTION A-A
ALONG EAST AND WEST FASCIA

QUANTITIES		
ITEM	UNIT	AMOUNT
PEDESTRIAN FENCING, STRUCTURES - S08	S.F.	5192
ELECTRICAL GROUNDING SYSTEM - S08	LS.	1

PLANS PREPARED BY
CITY OF DETROIT
CITY ENGINEERS OFFICE

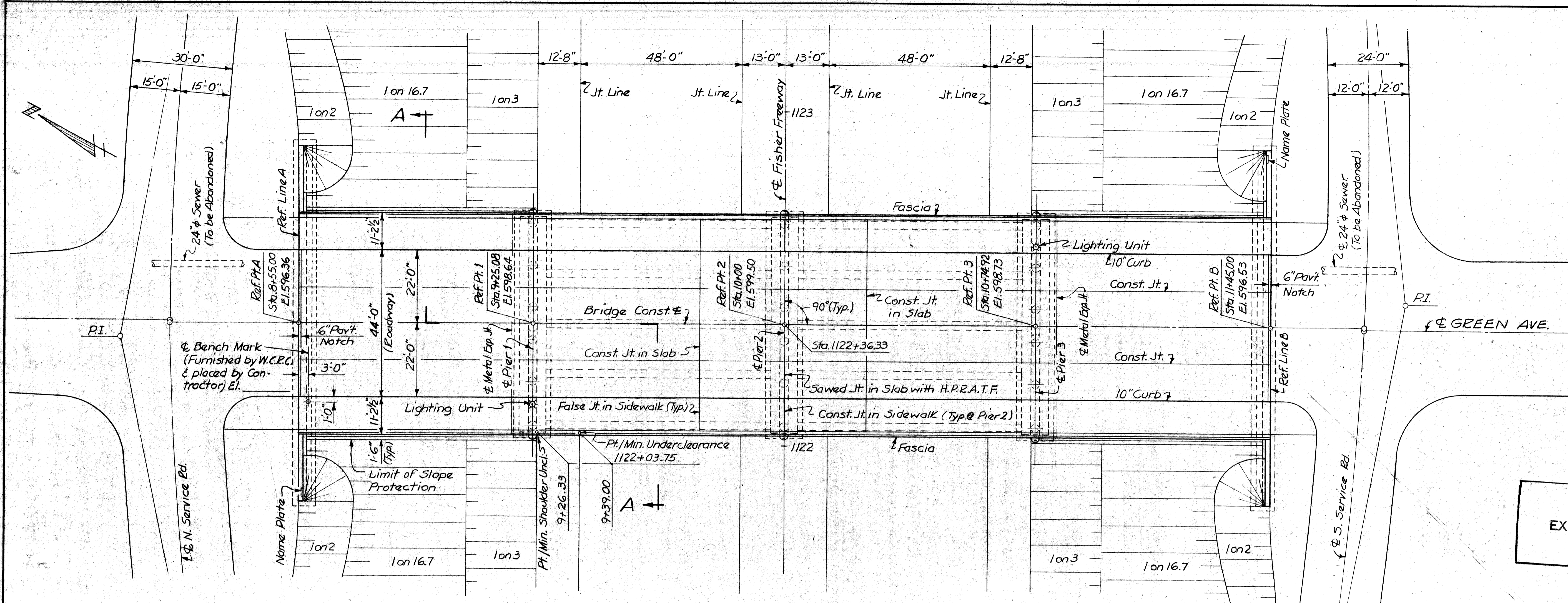
APPROVED _____
STRUCTURAL ENGINEER

JOB No.

MICHIGAN DEPARTMENT OF TRANSPORTATION
GREEN AVE. OVER I 75
PROTECTIVE SCREENING DETAILS

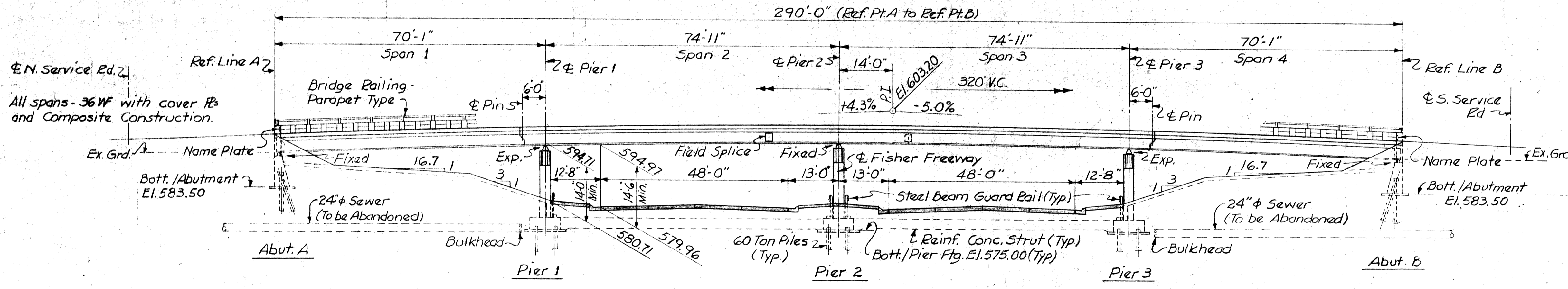
REVISIONS			
NO.	DESCRIPTION	DATE	BY

DRAWN BY	KARDER	3-83
CHECKED BY	N.H.	3-83
DATE		
SHEET	60	OF 17
S08 OF 82194		



COPY
 EXISTING BRIDGE DETAILS
 (NOT FOR CONSTRUCTION)

PLAN
Scale: 1/16"=1'-0"



ELEVATION
Scale: 1/16"=1'-0"

GENERAL NOTES

The design of this structure is based on the M.S.H.D. Standard Specifications for the Design of Highway Bridges - 1958 Edition (H20-516-44). Live load plus impact deflection not more than 1/1000 of span length or 1/500 of cantilever arm.
 Top of roadway slab and tops of curbs are parallel to the vertical curve.
 All piles have a minimum bearing capacity of 60 tons. Backfill material at substructure units shall be compacted to a density of 95 per cent.
 Grouted riprap as Slope Protection, Class A shall not be used on this project.

REVISIONS

© M.S.H.D. Review Revisions 1-18-65 FNW/RJC

Work this sheet with Sh.# 210.

PLANS PREPARED BY THE BOARD OF WAYNE COUNTY ROAD COMMISSIONERS

PHILIP J. NEUDECK WILLIAM E. KREGER AL BARBOUR

APPROVED: *M. Jozaschi* APPROVED: *W. Johnson* APPROVED: *S. Lipsitz*

ENGINEER OF DESIGN, STRUCTURES AND EXPRESSWAYS ENGINEER OF DESIGN, STRUCTURES AND EXPRESSWAYS COUNTY HIGHWAY ENGINEER

MICHIGAN STATE HIGHWAY DEPARTMENT

APPROVED: _____ DESIGN SUPERVISING ENGINEER APPROVED: _____ SHEET 7 OF 17 ENGINEER OF DESIGN/CONSULTANTS

I-75 FISHER FREEWAY UNDER GREEN AVE.

GENERAL PLAN OF STRUCTURE

COUNTY JOB NO. 1319 SHEET NO. 209 STATE PROJECT NO. S08 of 821941	ISSUE NO. 2 DATE 1-17-65
---	-----------------------------