

FENCING NOTES

ALL WORK SHALL CONFORM TO MDOT STANDARD SPECIFICATIONS FOR CONSTRUCTION, 1979 EDITION

ALL FENCE FABRIC SHALL BE GALVANIZED, #9 GAGE WITH A 2" MESH AND WITH KNUCKLING AT THE BOTTOM SELVAGE.

THE POSTS SHALL BE 2 1/4" X 2" GALVANIZED H-POSTS WEIGHING 4.1 P.L.F. ROUND POSTS HAVING A 2 1/8" OD WEIGHING 5.79 P.L.F. GALVANIZED, MAY BE USED WITH SIMILAR CONNECTION DETAILS.

THE NOMINAL 1 1/4" BRACES SHALL BE 1 5/8" OD. STEEL PIPE OR TUBING WEIGHING 22.7 P.L.F. GALVANIZED

ALL POSTS AND TUBING SHALL BE FURNISHED WITH THE MANUFACTURERS STANDARD CONNECTIONS AND ITS MINIMUM WEIGHT SHALL BE WITHIN 5% OF THAT SPECIFIED.

POSTS AND TUBING SHALL BE BENT IN THE SHOP AS SHOWN ON THE PLANS.

ALL COMPONENTS ARE TO BE GALVANIZED. BOLTS, NUTS AND WASHERS ARE TO BE GALVANIZED IN ACCORDANCE WITH ASTM A 153.

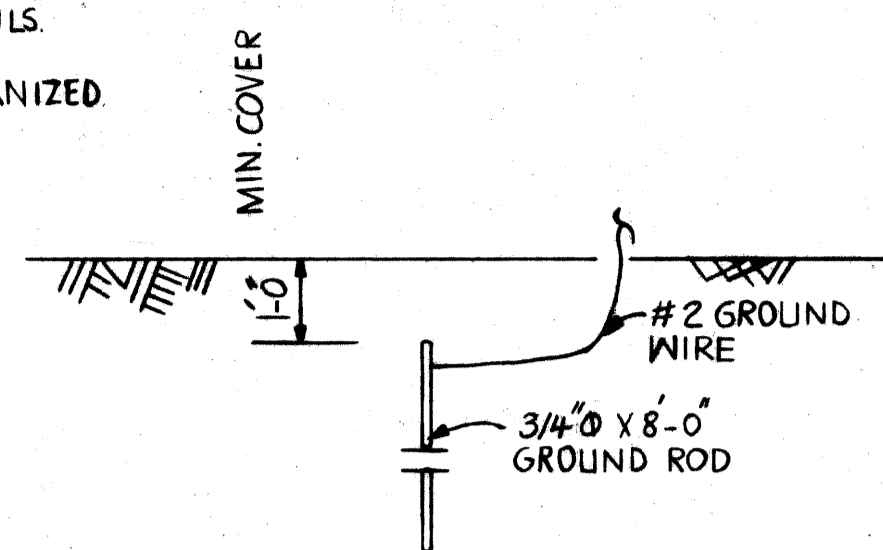
TENSION BARS SHALL BE 3/4" X 1 1/4" GALVANIZED STEEL.

CONTRACTOR SHALL VERIFY FIELD CONDITIONS BEFORE FABRICATION.

CARE IS TO BE TAKEN IN PLACING EXPANSION BOLTS AND BRACKETS SO AS TO INSURE THAT THE BRACKETS HOLD THE POSTS FIRMLY AGAINST CONCRETE. SHIM IF NECESSARY.

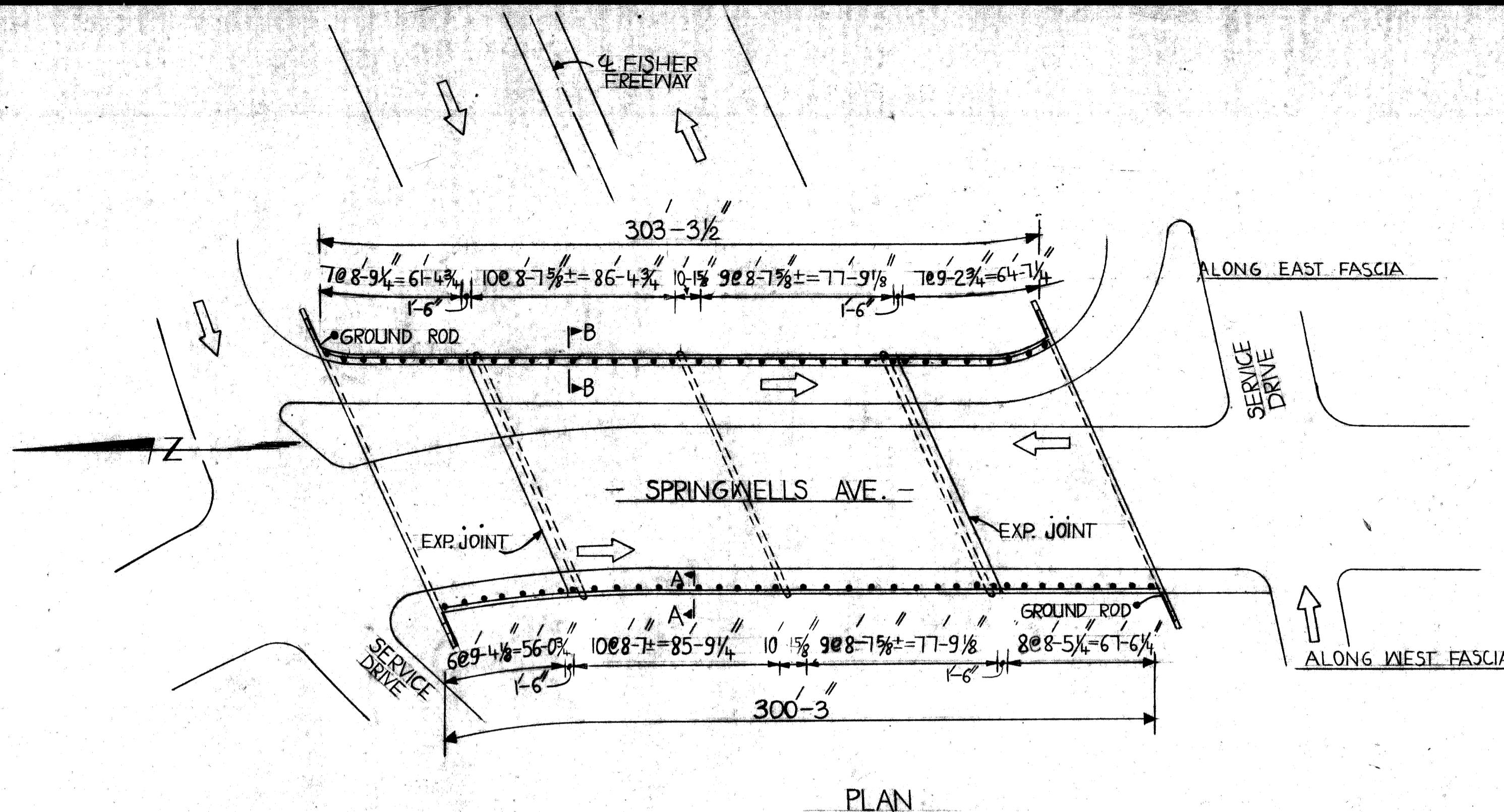
PEDESTRIAN FENCING STRUCTURES SHALL INCLUDE THE FABRIC, POSTS, BRACES, EXPANSION BOLTS, BRACKETS AND ALL SUITABLE CONNECTIONS AND FITTINGS.

1/2" EXPANSION BOLTS SHALL BE PHILLIPS RED HEAD GALVANIZED WEDGE ANCHORS W/5 1242 6 OR APPROVED EQUAL.

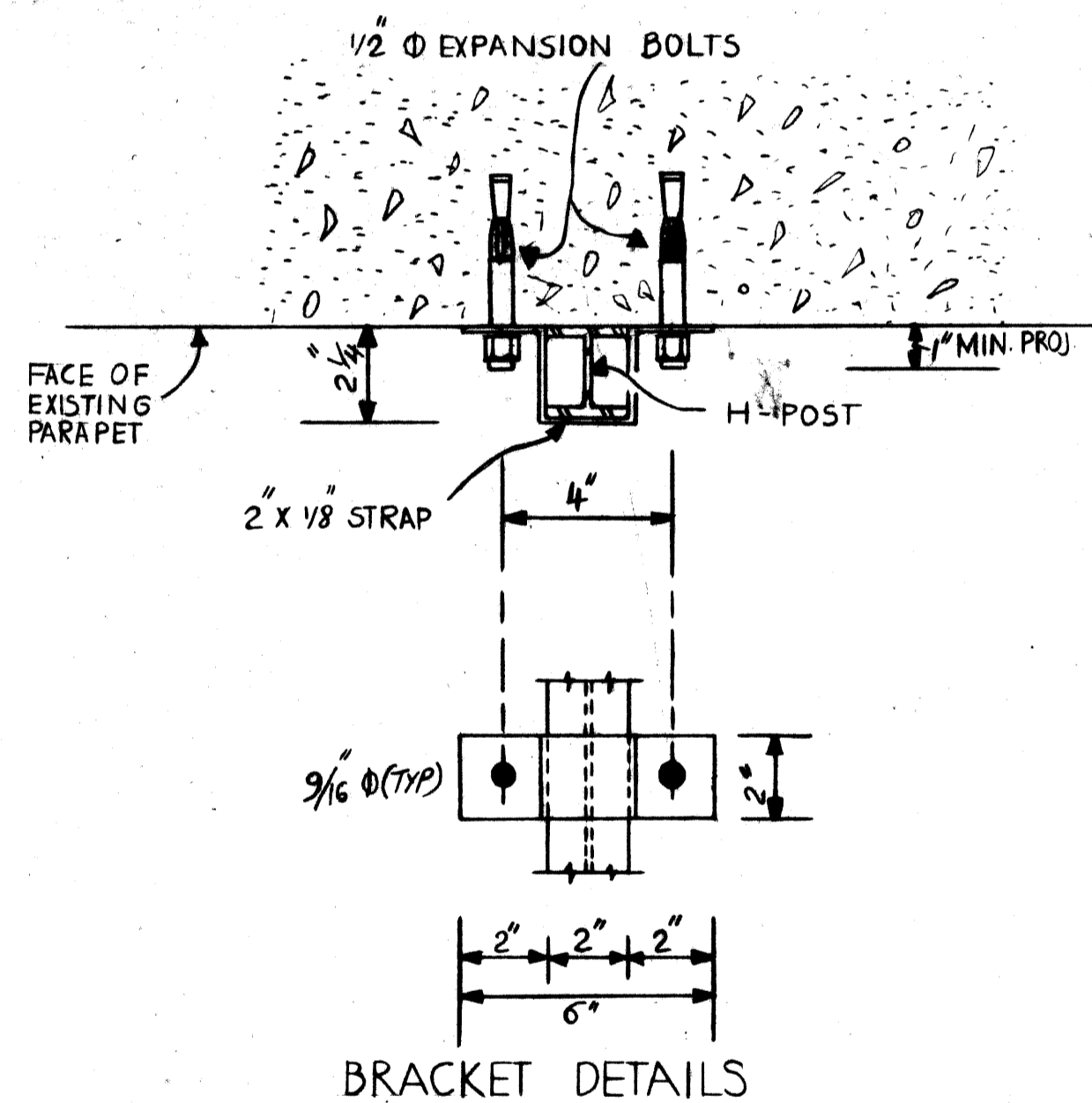


1. ALL UNDERGROUND CONNECTIONS SHALL BE CALDWELDED THERMITE WELD, GAS OR ARC WELD.
2. EXPOSED CONNECTIONS MAY BE SPLIT BOLT OR CLAMP TYPE.
3. GROUND WIRE SHALL BE #2 AWG STRANDED SOFT DRAWN COPPER WIRE.

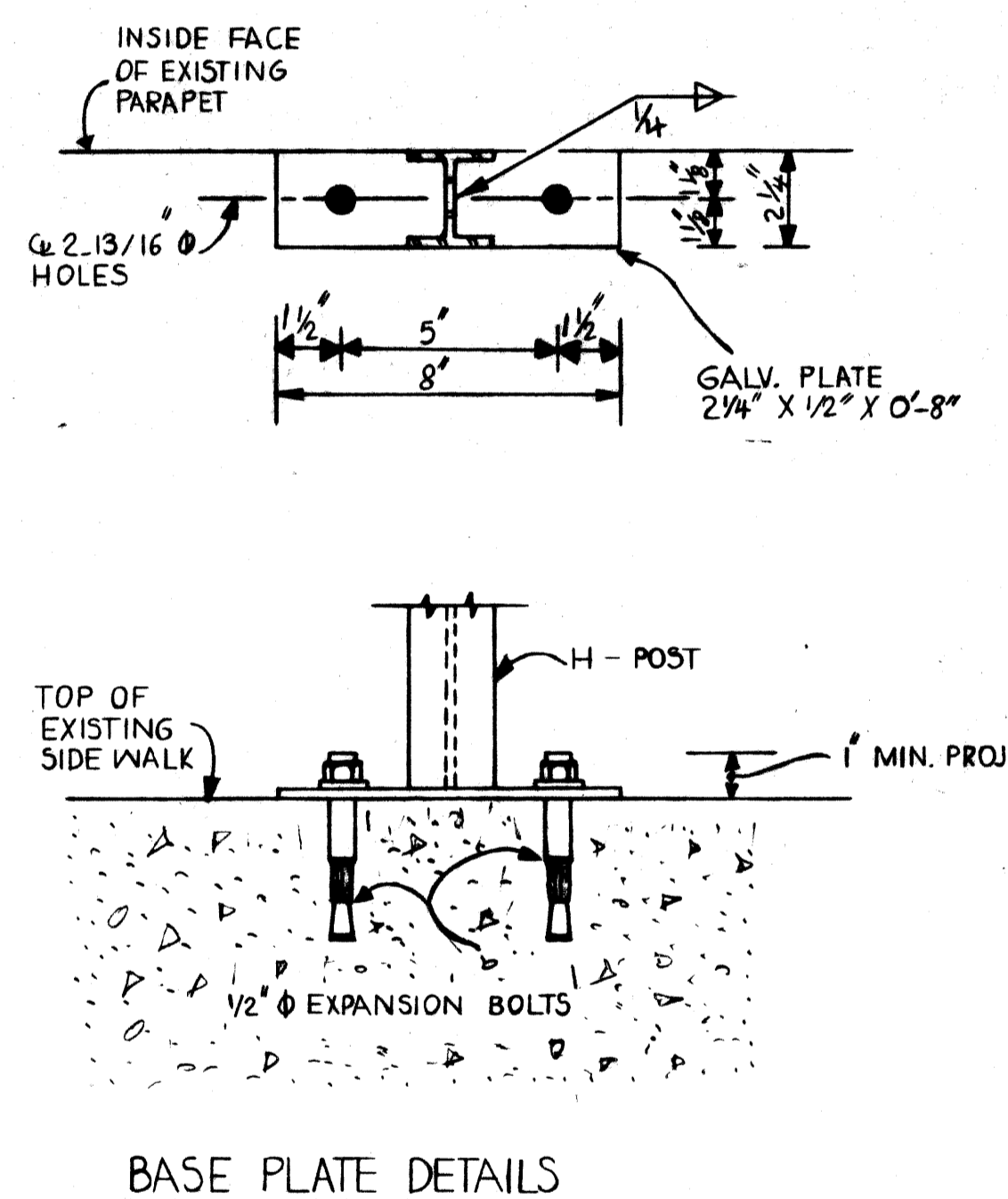
GROUNDING DETAIL



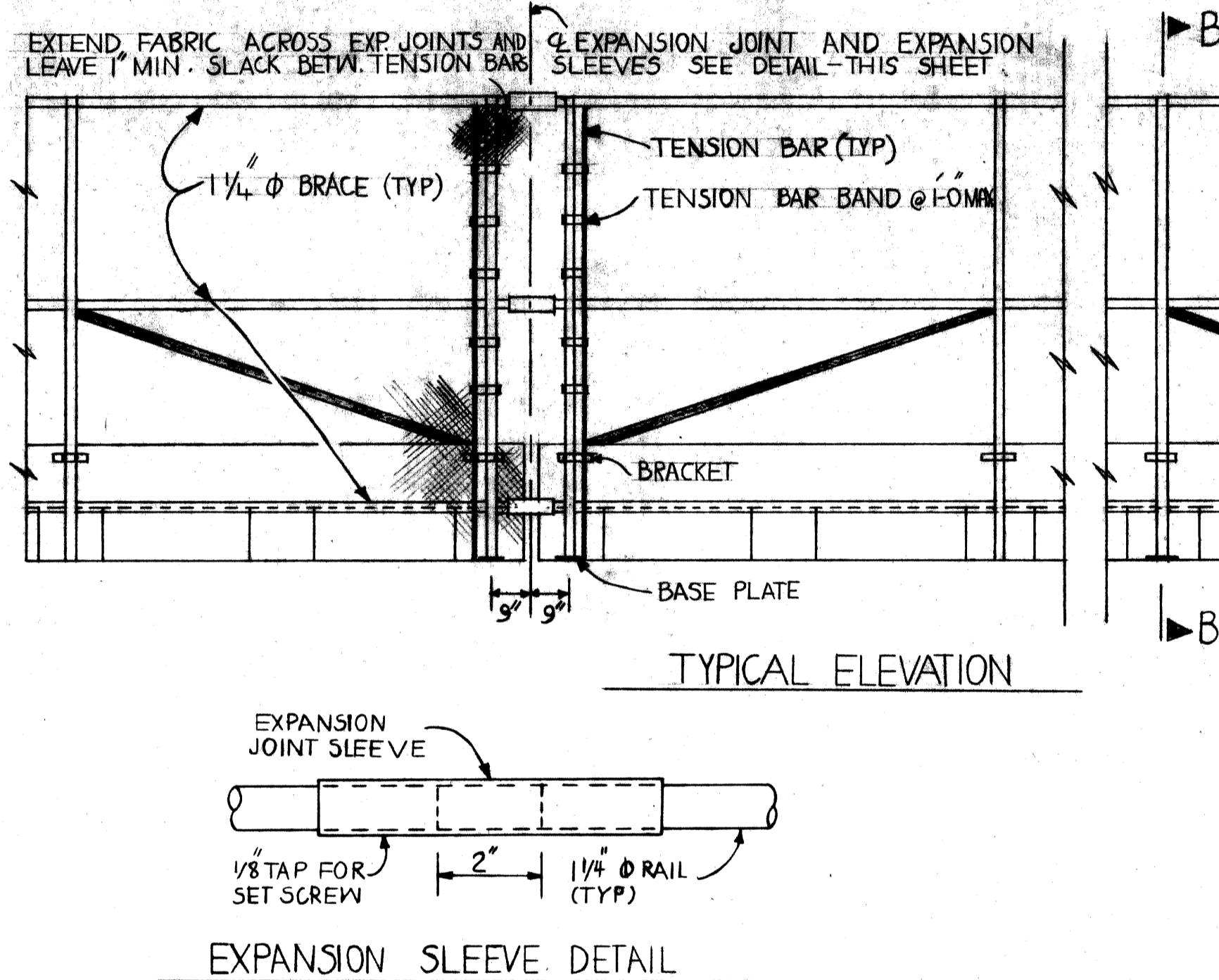
PLAN



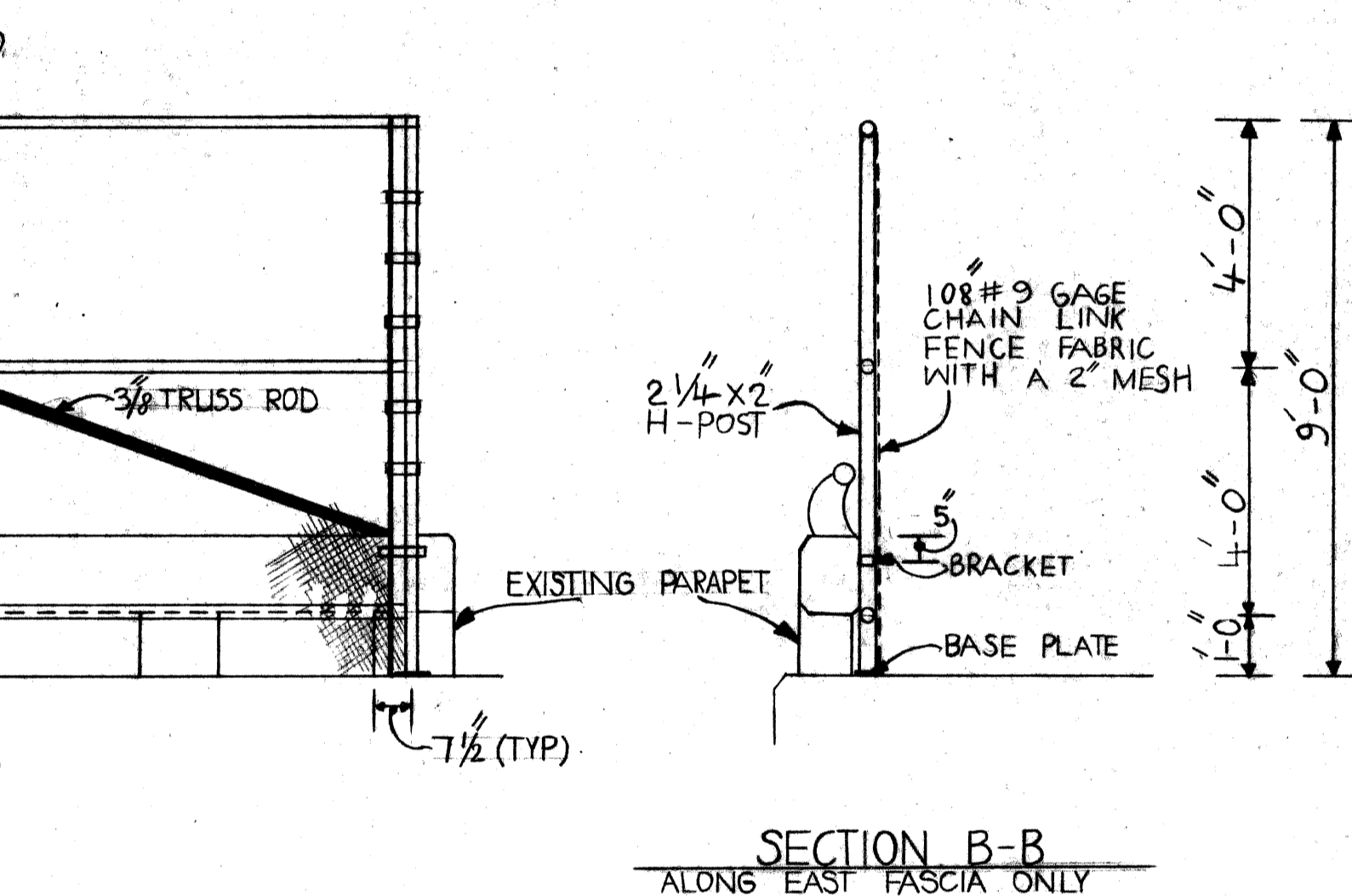
BRACKET DETAILS



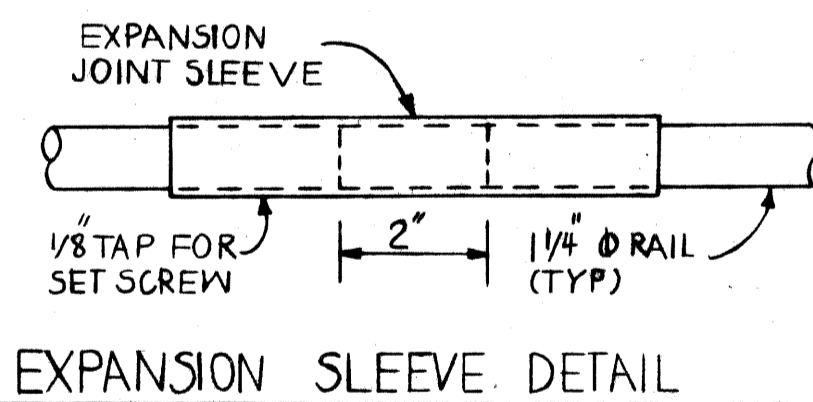
BASE PLATE DETAILS



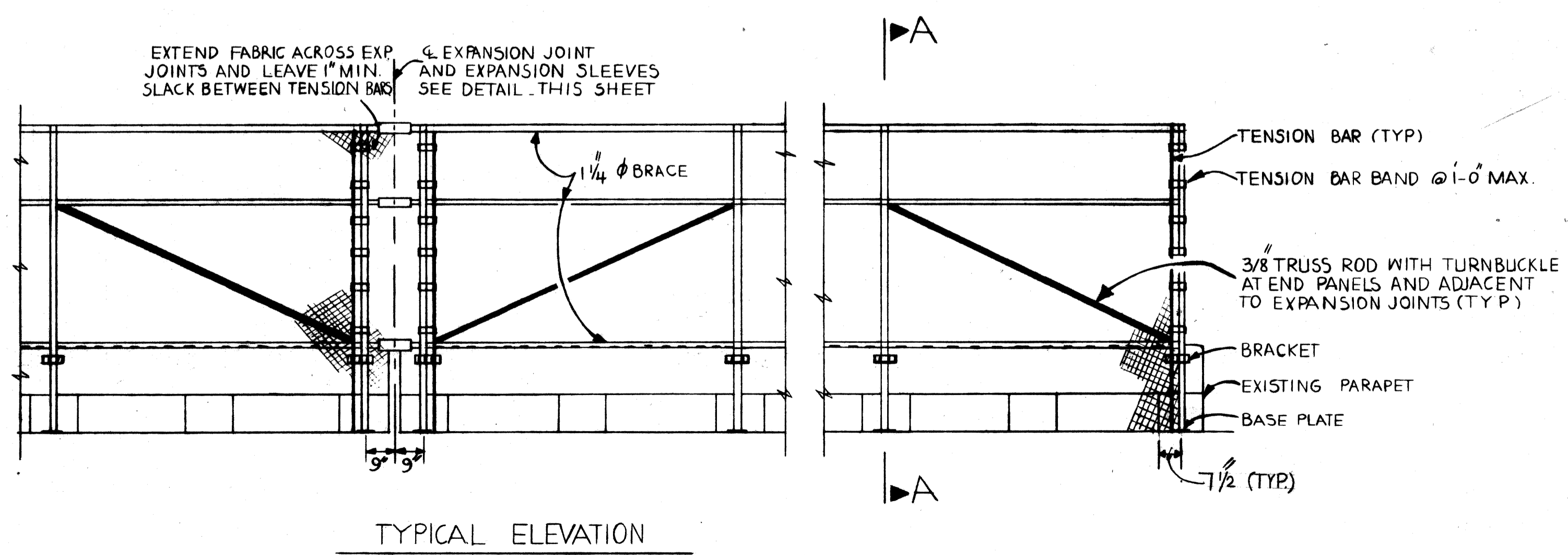
TYPICAL ELEVATION



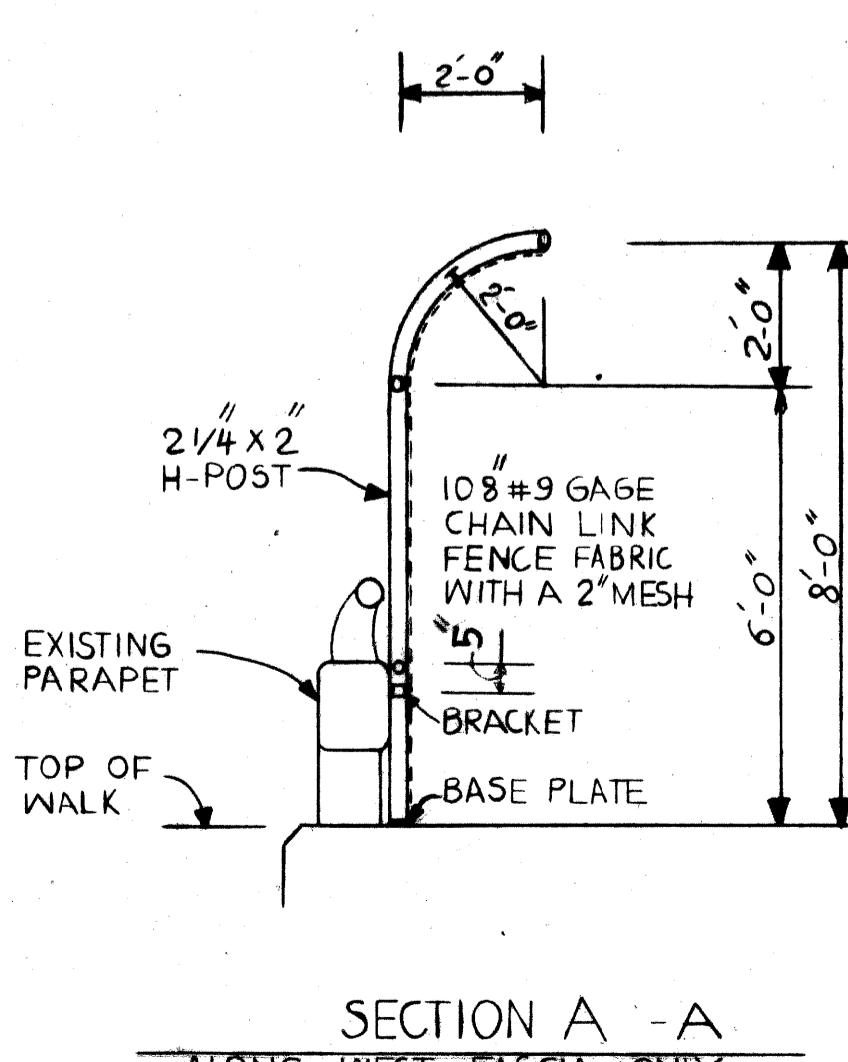
SECTION B-B
ALONG EAST FASCIA ONLY



EXPANSION SLEEVE DETAIL



TYPICAL ELEVATION



SECTION A-A
ALONG WEST FASCIA ONLY

QUANTITIES		
ITEM	UNIT	AMOUNT
PEDESTRIAN FENCING, STRUCTURES, S-07	S.F.	5432
ELECTRICAL GROUNDING SYSTEM, S-07	L.S.	1

PLANS PREPARED BY
CITY OF DETROIT
CITY ENGINEERS OFFICE

APPROVED _____
STRUCTURAL ENGINEER

MICHIGAN DEPARTMENT OF TRANSPORTATION
SPRINGWELLS AVE. OVER I-75
PROTECTIVE SCREENING DETAILS

REVISIONS

NO.	DESCRIPTION	DATE	BY

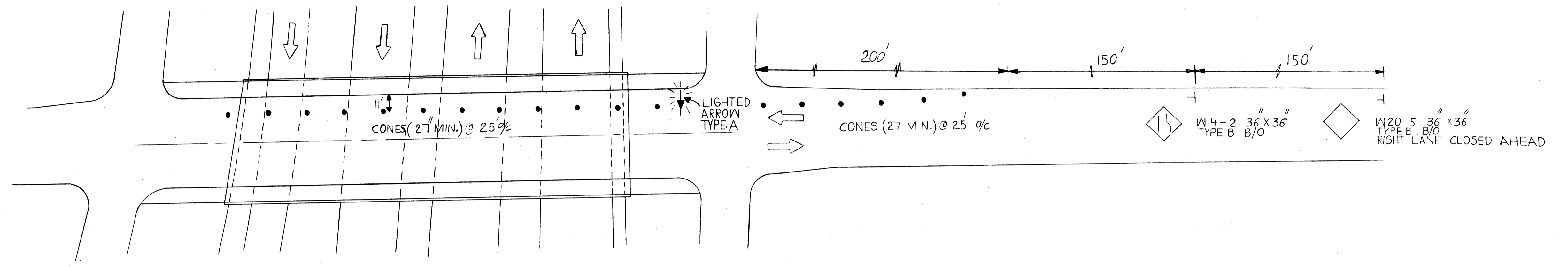
JOB No. _____

ROAD DIST. **KARPERI 3-83**
DRAWN BY **N.H.**
TRACKED BY
CHECKED BY
SHEET 4 OF 17

S07 OF 82194

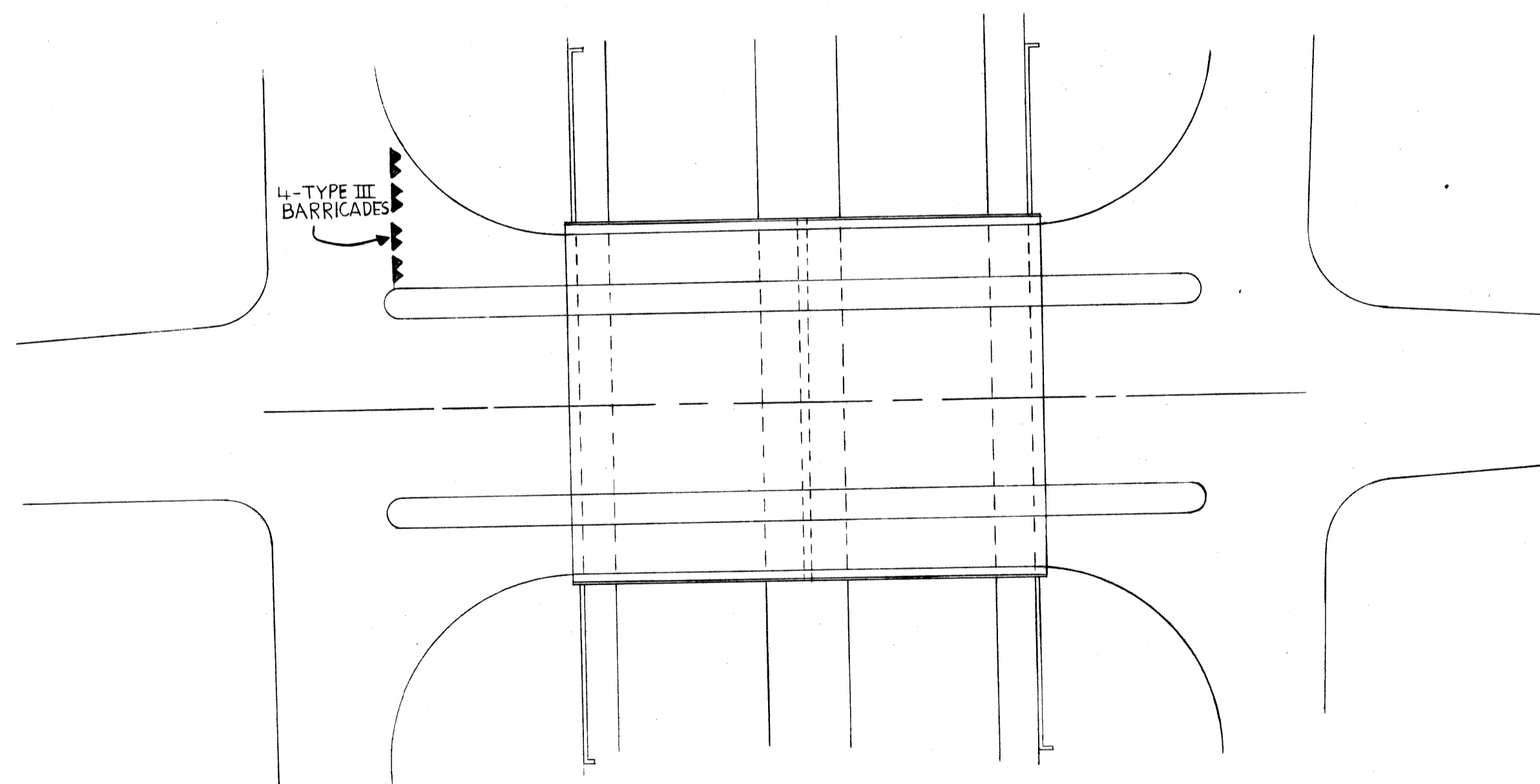
ITEMS		TOTALS	UNITS	SHEET NOS.	AS	PER	PLANS	TOTALS	UNITS	SHEET NOS.
PEDESTRIAN FENCING, STRUCTURES S-01	5432	SF								
PEDESTRIAN FENCING, STRUCTURES S-08	5192	SF								
PEDESTRIAN FENCING, STRUCTURES S-11	1327	SF								
PEDESTRIAN FENCING, STRUCTURES S-12	2654	SF								
PEDESTRIAN FENCING, STRUCTURES S-13	4587	SF								
PEDESTRIAN FENCING, STRUCTURES S-23	4104	SF								
PEDESTRIAN FENCING, STRUCTURES S-14	3111	SF								
PEDESTRIAN FENCING, STRUCTURES S-17	2171	SF								
LIGHTED ARROW, TYPE A, FURNISHED	2	EA								
LIGHTED ARROW, TYPE A, OPERATED	2	EA								
BARRICADE, TYPE III	4	EA								
SIGN, TYPE B, TEMPORARY	36	SF								
MOBILIZATION	1	LS								
MINOR TRAFFIC DEVICES	1	LS								
ELECTRICAL GROUNDING SYSTEM S-01	1	LS								
ELECTRICAL GROUNDING SYSTEM S-08	1	LS								
ELECTRICAL GROUNDING SYSTEM S-11	1	LS								
ELECTRICAL GROUNDING SYSTEM S-12	1	LS								
ELECTRICAL GROUNDING SYSTEM S-13	1	LS								
ELECTRICAL GROUNDING SYSTEM S-23	1	LS								
ELECTRICAL GROUNDING SYSTEM S-14	1	LS								
ELECTRICAL GROUNDING SYSTEM S-17	1	LS								
TOTALS										
UNITS										
SHEET NOS.										
AS CONSTRUCTED										

QUANTITY SHEET - E



PLAN
— TEMPORARY CLOSE 1 LANE —

QUANTITIES.		
ITEM.	UNIT	AMOUNT
LIGHTED ARROW, TYPE A, FURNISHED.	EA.	2
LIGHTED ARROW, TYPE A, OPERATED.	EA.	2
BARRICADE, TYPE III.	EA.	4
SIGN, TYPE B, TEMPORARY.	S.F.	36
MINOR TRAFFIC DEVICES.	L.S.	1



PLAN
— TEMPORARY CLOSE U-TURN —

GENERAL NOTES:

CLOSURES SHALL BE ONLY BETWEEN THE HOURS OF 9:00 AM AND 3:00 PM. TRAFFIC CONTROL DEVICES SHALL BE REMOVED OR COVERED DURING NON-WORKING HOURS.

LOCATION AND TYPE OF SIGNING MAY BE ADJUSTED TO FIT FIELD CONDITIONS, AS DIRECTED BY THE ENGINEER.

TYPE III BARRICADES SHALL BE 12'-0" IN LENGTH.

PLANS PREPARED BY
CITY OF DETROIT
CITY ENGINEERS OFFICE

APPROVED _____
STRUCTURAL ENGINEER

JOB No. _____

MICHIGAN DEPARTMENT OF TRANSPORTATION
TYPICAL SIGNING DETAILS FOR PROTECTIVE
SIGNING ON SEVERAL STRUCTURES
OVER I-75.

REVISIONS			
NO.	DESCRIPTION	DATE	BY

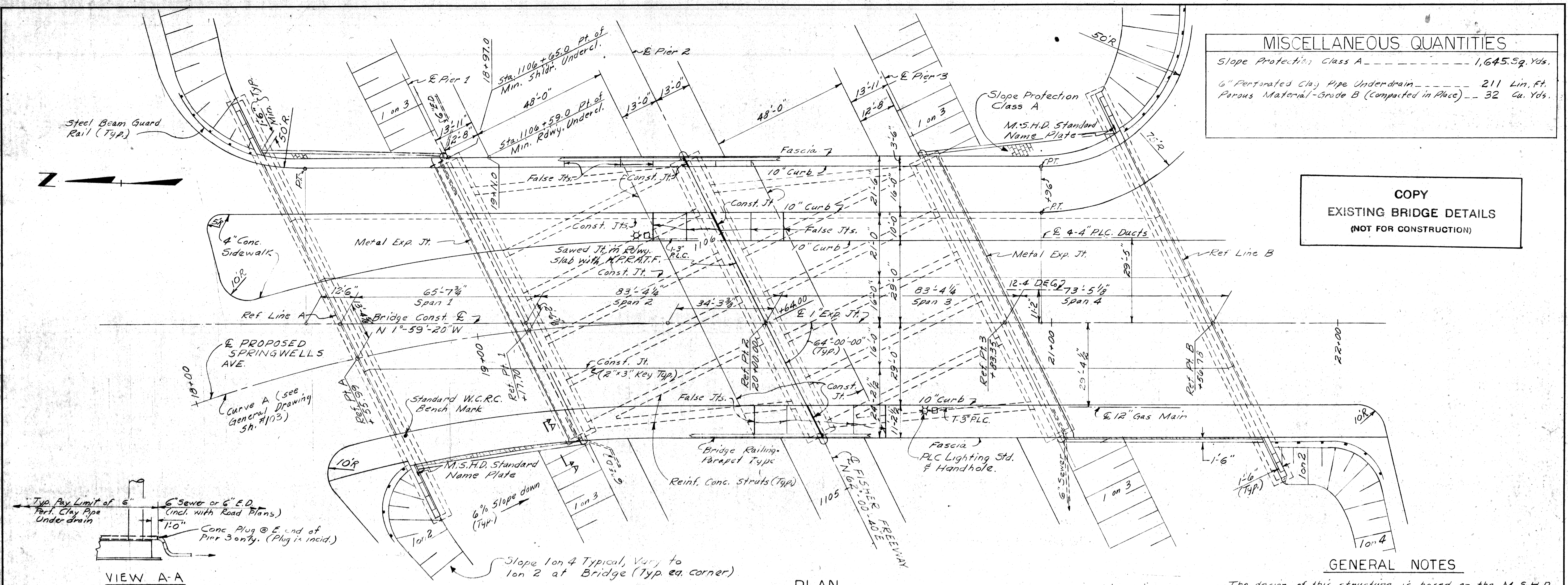
SQUAD BOSS	KARER	3-85
DRAWN BY	N.H.	3-85
CHECKED BY	BAK	3-85
SHEET	3	OF 17

S-07,08,11,12,13,14,17 & 23
OF 82194

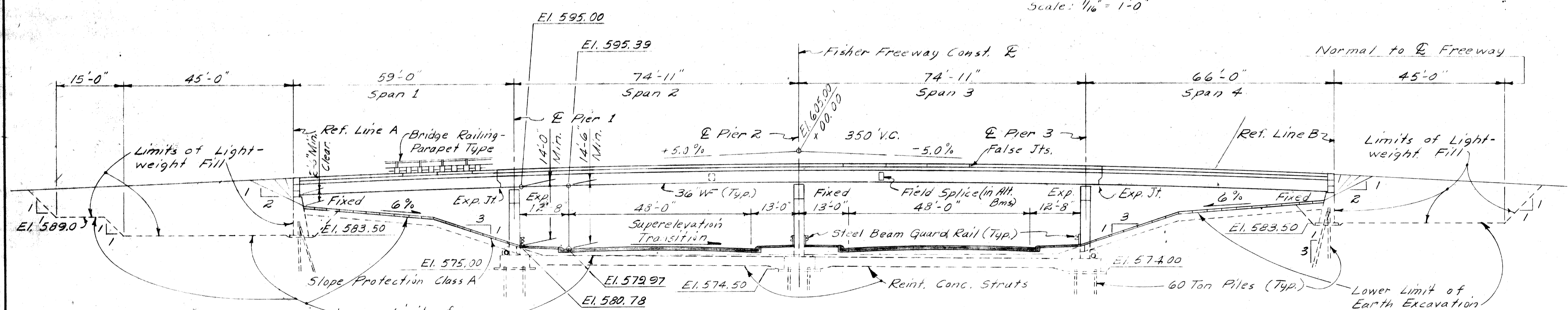
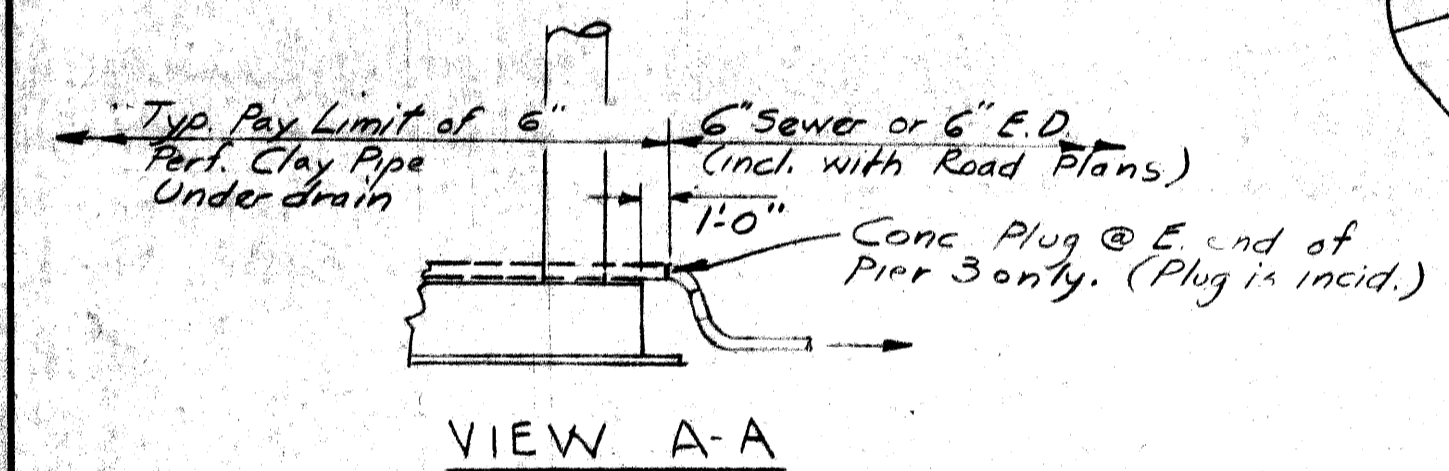
MISCELLANEOUS QUANTITIES

Slope Protection Class A ----- 1,645 Sq. Yds.
 6" Perforated Clay Pipe Underdrain ----- 211 Lin. Ft.
 Porous Material - Grade B (Compacted in Place) ----- 32 Cu. Yds.

COPY
EXISTING BRIDGE DETAILS
 (NOT FOR CONSTRUCTION)



PLAN
 Scale: 1/16" = 1'-0"



ELEVATION NORMAL TO Q FREEWAY
 Scale: 1/16" = 1'-0"

GENERAL NOTES

The design of this structure is based on the M.S.H.D. Standard Specifications for the design of Highway Bridges - 1958 Edition - (H20-516-44 and Alternate Military loading).

The deflection from Live Load (Including Impact) shall not exceed 1/1000 of the distance between supports. Deflection at ends of Stub Cantilevers shall not exceed 1/350 of the Cantilevered length.

Top of roadway slab and tops of curbs are parallel to the Vertical Curve except as modified by transition to meet existing conditions.

For Details of Slope Protection Class A, see M.S.H.D. Standard Sheet 542.

Grouted Riprap shall not be used on this Bridge.

HRRATF Denotes Hot-Poured Rubber Asphalt-Type Filter

All Piles have a minimum of 60 Ton Capacity.

Contractor is to note that the existing soil for a depth of 14' ± to El. 579 ± is granular and this material may be used as backfill subject to the Approval of the Engineer. Backfill around substructure units must be compacted to not less than 95% of the maximum unit weight.

NO.	REVISIONS

© Misc. Rev. DKC 10-27-64

Work this sheet with SH #100

PLANS PREPARED BY THE BOARD OF WAYNE COUNTY ROAD COMMISSIONERS

PHILIP J. NEUDECK WILLIAM E. KREGGER AL BARBOUR

APPROVED: *[Signature]* APPROVED: *[Signature]*

ENGINEER OF DESIGN, STRUCTURES AND EXPRESSWAYS ENGINEER OF STRUCTURES AND EXPRESSWAYS COUNTY HIGHWAY ENGINEER

MICHIGAN STATE HIGHWAY DEPARTMENT

APPROVED: _____ SHEET 5 OF 17

ISSUE NO. 2 DATE 1-17-64

COUNTY JOB SHEET NO. 1318 108

STATE PROJECT 507 OF 82194H

MICROFILMED