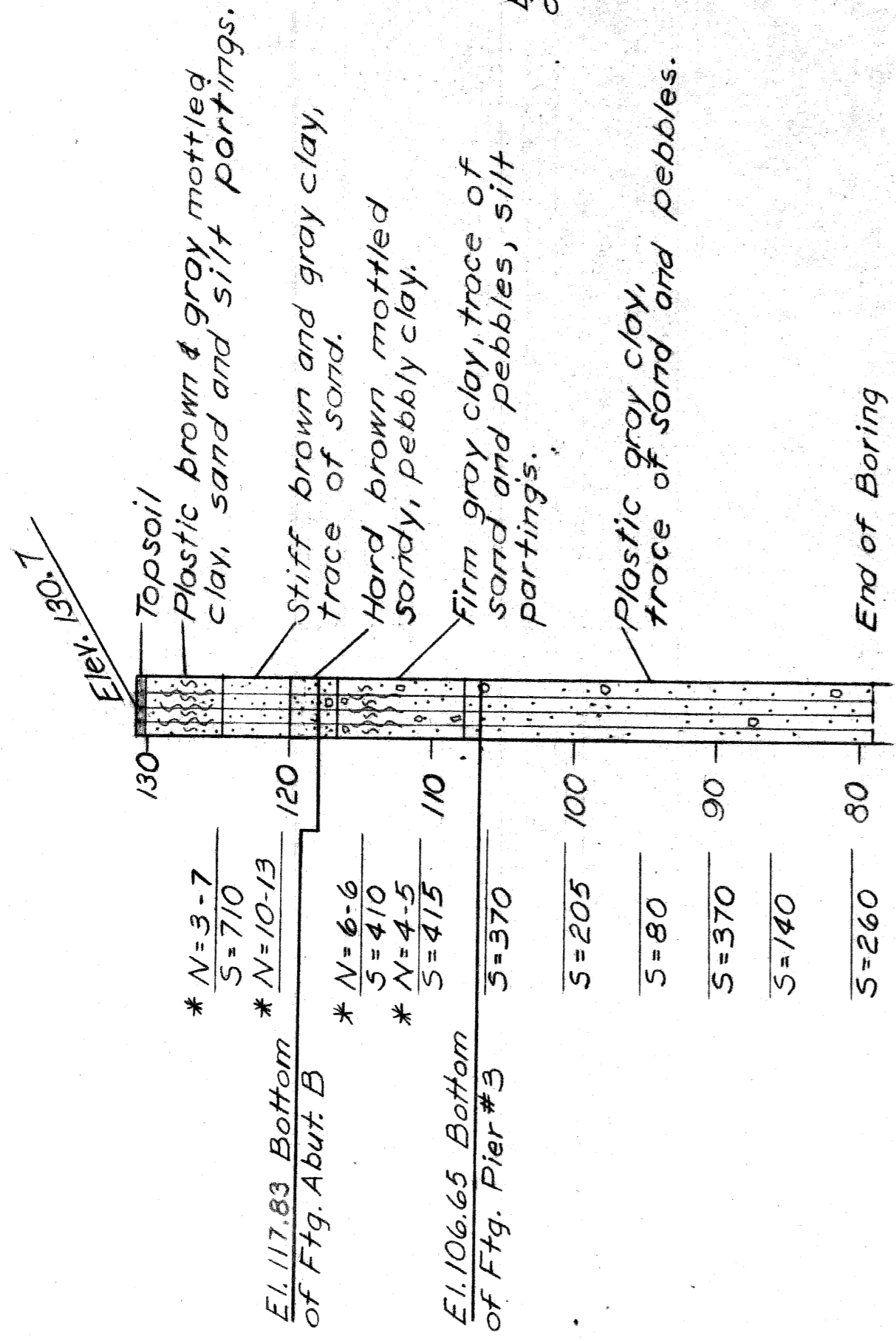
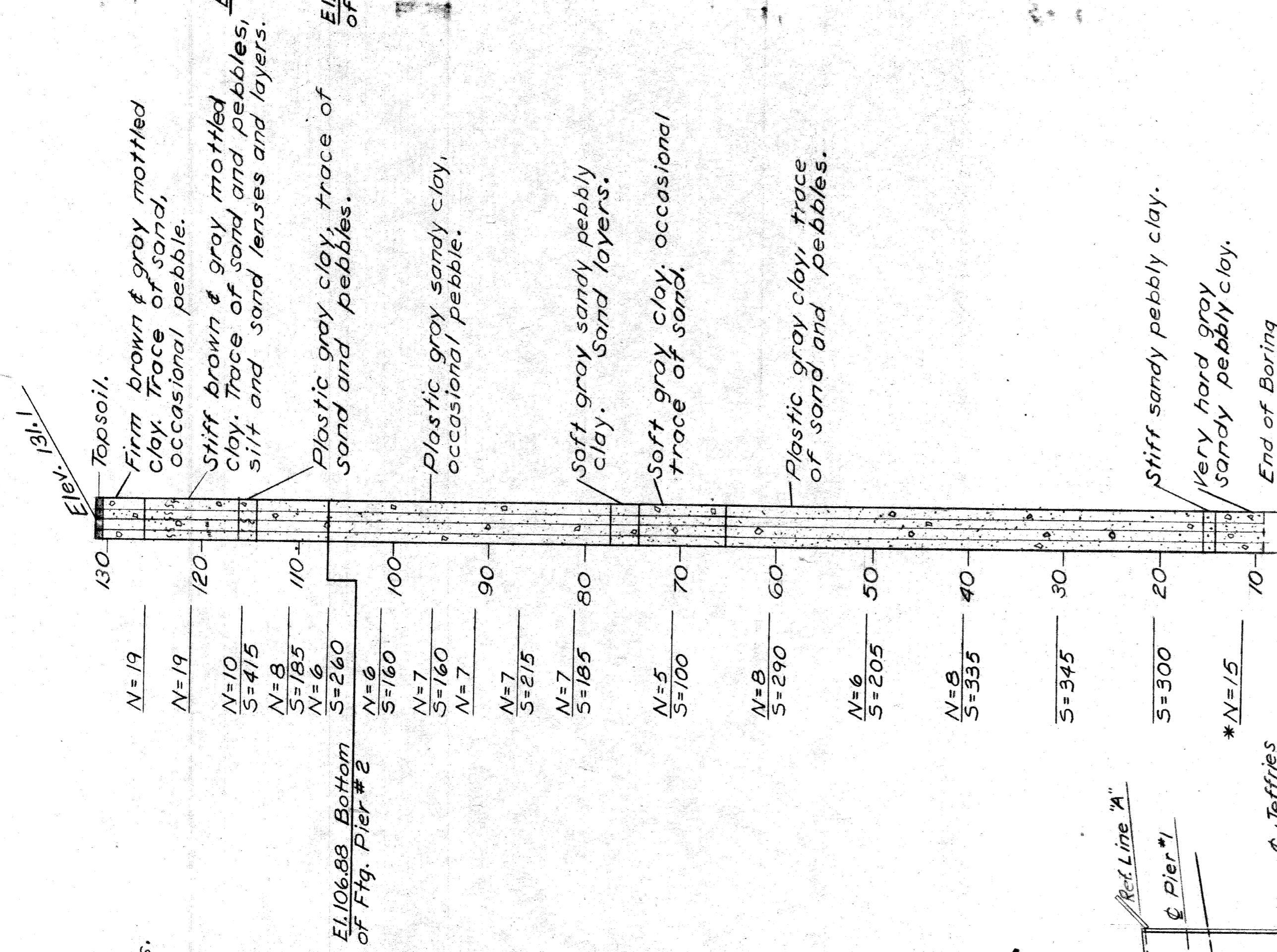


LOG OF SOIL BORINGS

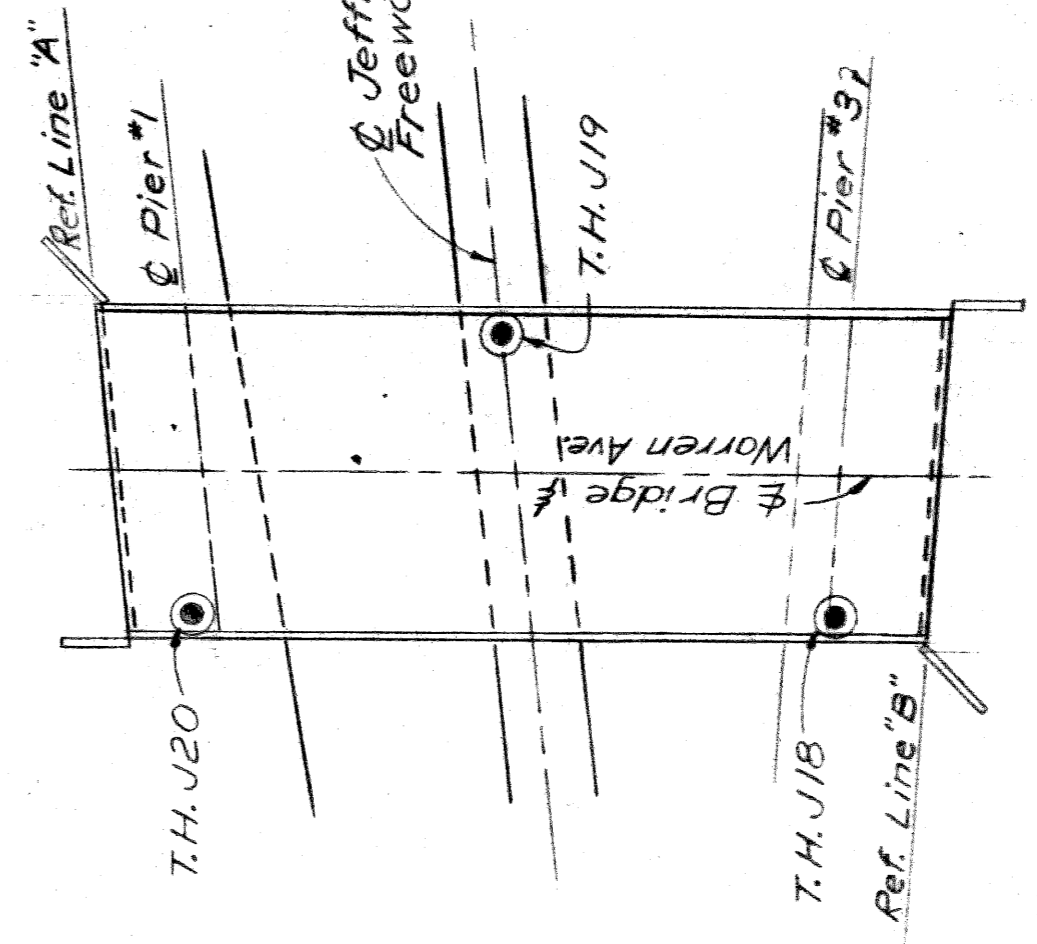
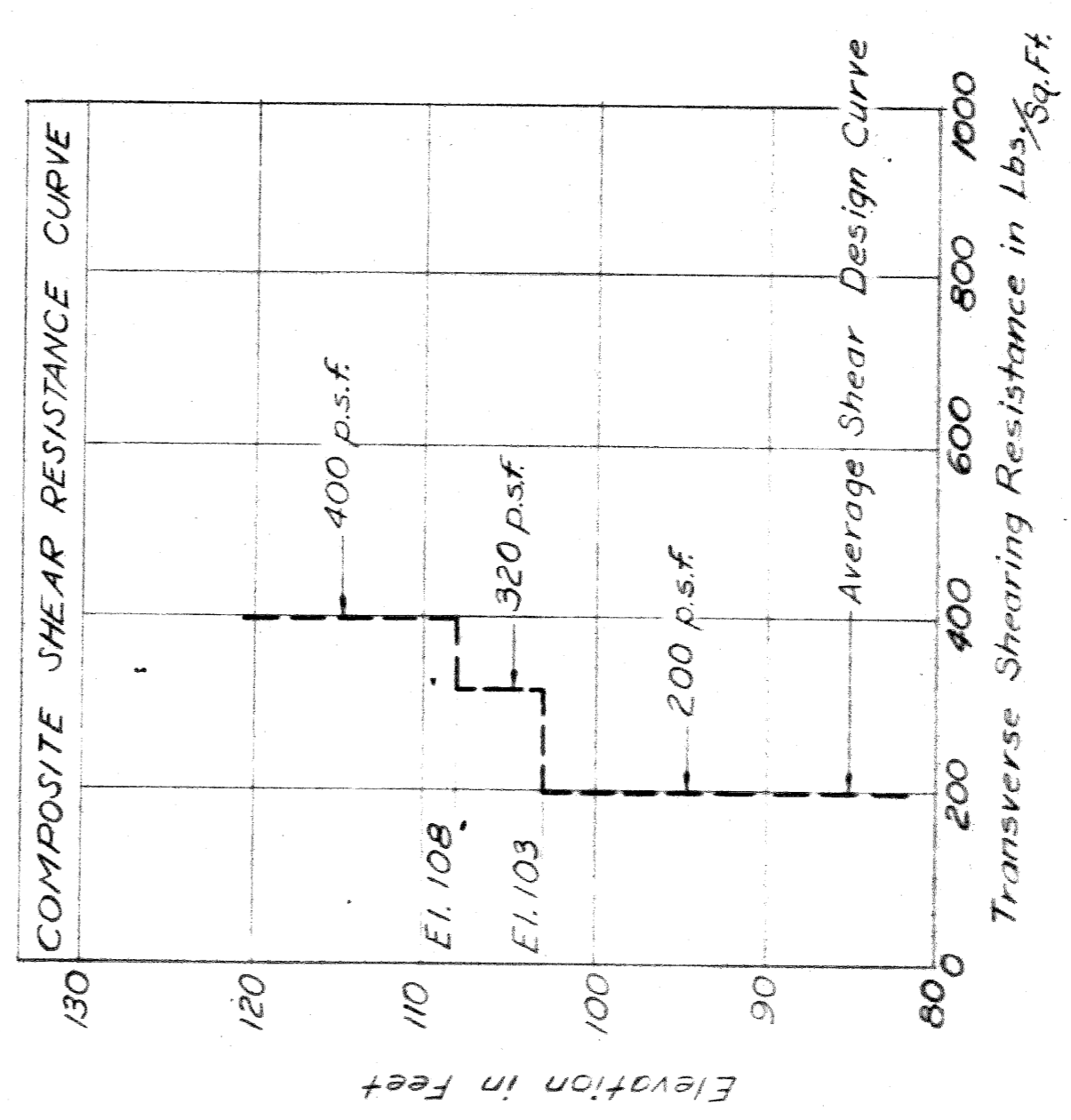
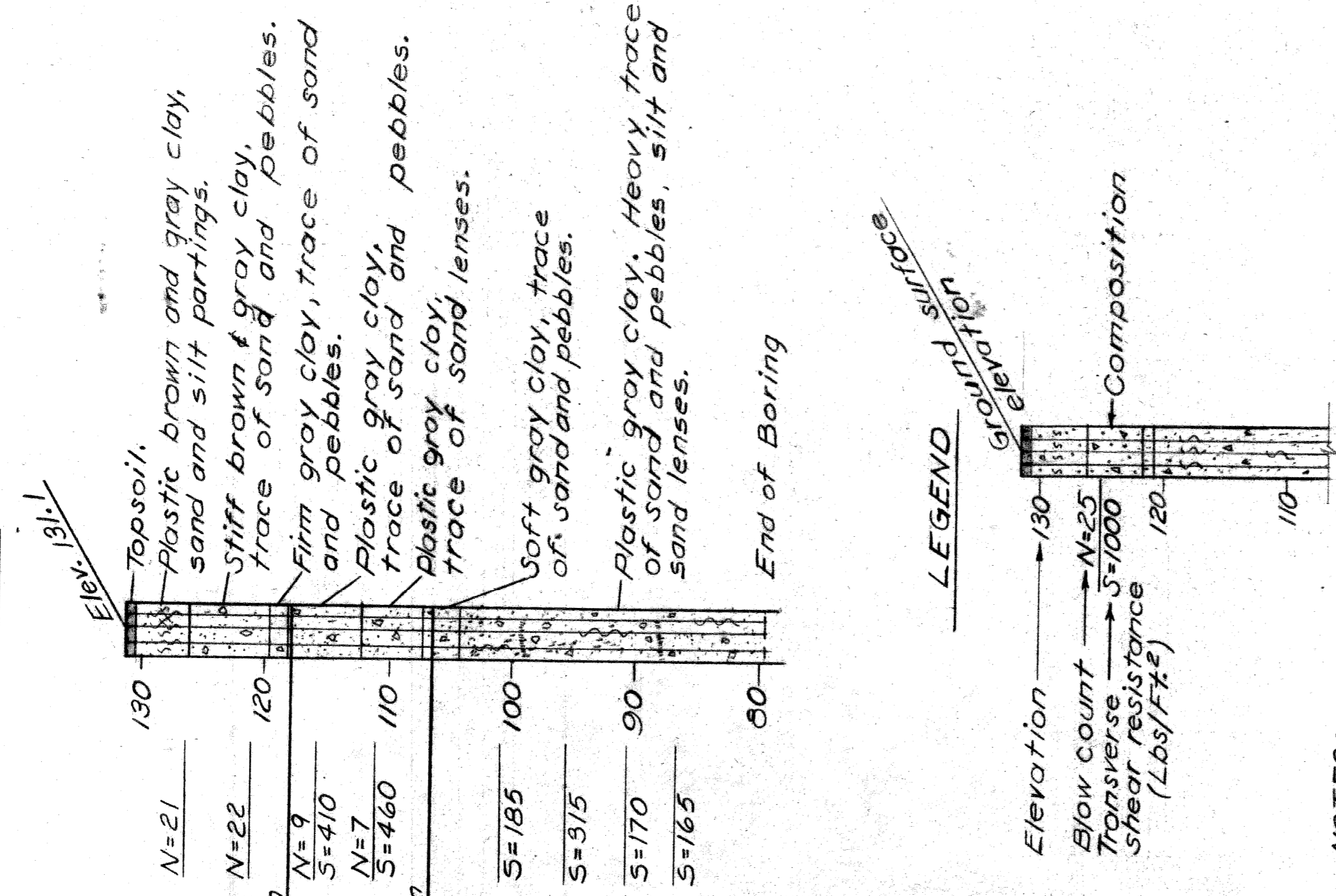
T.H. J 18



T.H. J 19



T.H. J 20



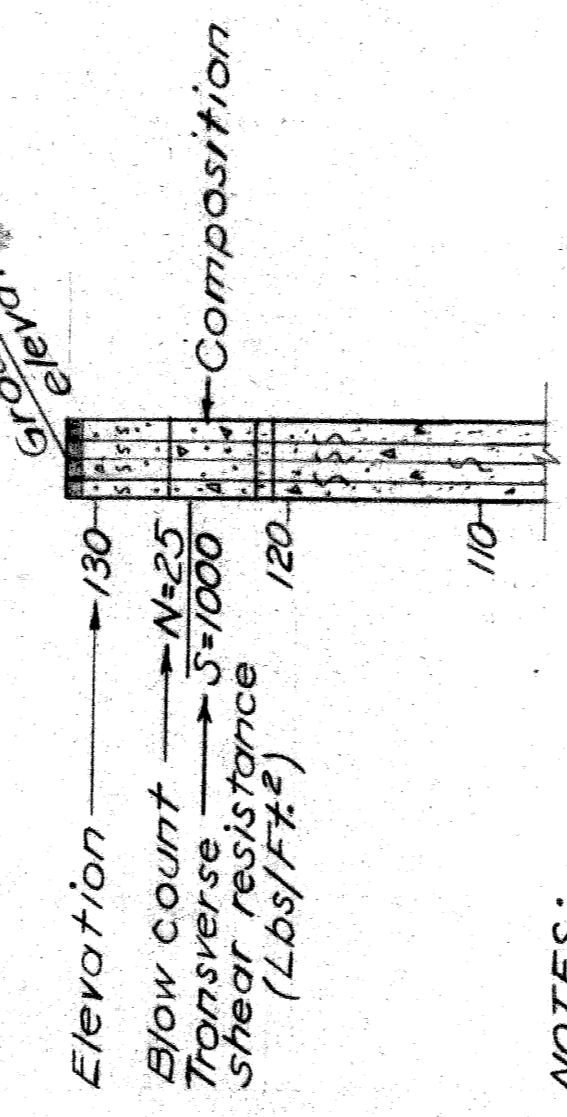
NOTES:

N Indicates the number of blows required to drive a sampler 12" (or as indicated) using a 140# hammer falling 30". Where blow count is not shown sampler was either pushed, hand driven, or levered.

S Indicates Transverse Shearing Resistance in Lbs. per sq. Ft. as determined by M.S.H.D. Standard Test.

All elevations are based on City of Detroit Datum.

LEGEND



PLANS PREPARED BY  
CITY OF DETROIT  
DEPARTMENT OF PUBLIC WORKS  
CITY ENGINEERS OFFICE  
BUREAU OF HIGHWAYS AND EXPRESSWAYS

APPROVED: *[Signature]*  
CIVIL ENGINEER

JOB No.  
PW 990(1)

NO.	REVISIONS	DATE	BY

MICHIGAN STATE HIGHWAY DEPARTMENT

WARREN AVE. CROSSING THE  
JEFFRIES FREEWAY IN DETROIT

LOG OF BORINGS

APPROVED: \_\_\_\_\_ DESIGN SUPERVISING ENGINEER  
APPROVED: \_\_\_\_\_ ASST. ENGINEER OF DESIGN

SHEET 3 OF 26

SOI of 82124A



