

QUANTITIES		
ITEM	UNIT	AMOUNT
PEDESTRIAN FENCING, STRUCTURES	S.F.	5422
ELECTRICAL GROUNDING SYSTEM	EA	2

FENCING NOTES

All work shall conform to MDOT Standard Specifications for Construction, 1979 Edition

All fence fabric shall be galvanized, #9 gage with a 2" mesh and with knuckling at the bottom selvage.

The posts shall be 2 1/4" x 2" galvanized H-posts weighing 4.1 p.l.f. Round posts having a 2 7/8" o.d. weighing 5.79 p.l.f. galvanized may be used with similar connection details.

The nominal 1 1/4" diameter braces shall be 1 5/8" o.d. steel pipe or tubing weighing 2.27 p.l.f. galvanized.

All posts and tubing shall be furnished with the manufacturer's standard connections and its minimum weight shall be within 5% of that specified.

Posts and tubing shall be bent in the shop as shown on the plans.

All components are to be galvanized. Bolts, nuts and washers are to be galvanized in accordance with ASTM A 153.

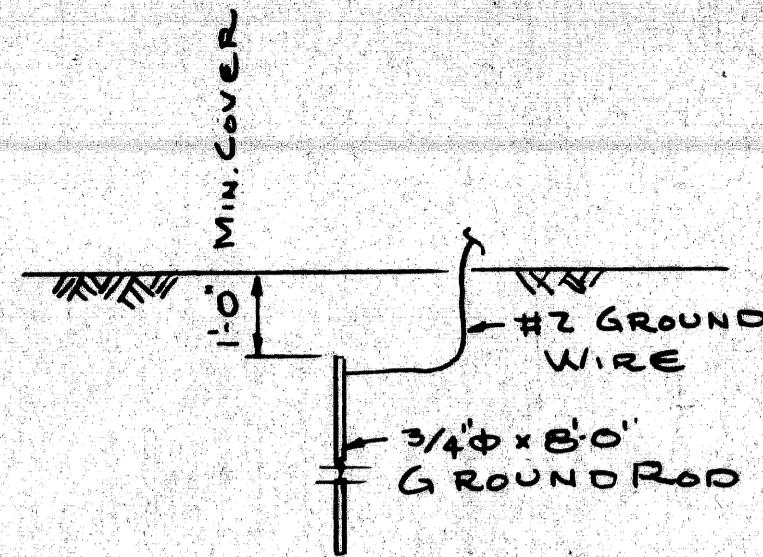
Tension bars shall be 3/4" x 1/4" galvanized steel.

Contractor shall verify field conditions before fabrication.

Care is to be taken in placing expansion bolts and brackets so as to insure that the brackets hold the posts firmly against concrete. Shim if necessary.

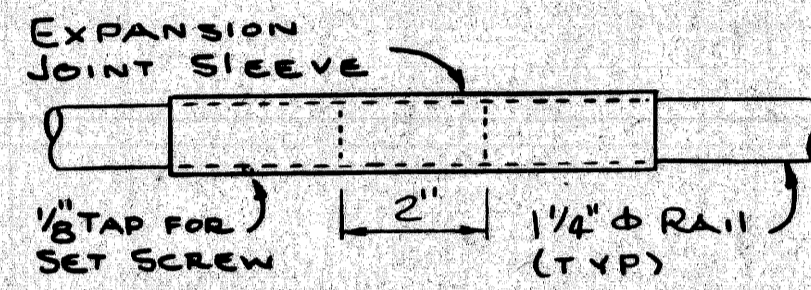
pedestrian fencing structures shall include the fabric, posts, braces, expansion bolts, brackets and all suitable connections and fittings.

1/2" diameter expansion bolts shall be Phillips red head galvanized wedge anchors WS 1242 G or approved equal.

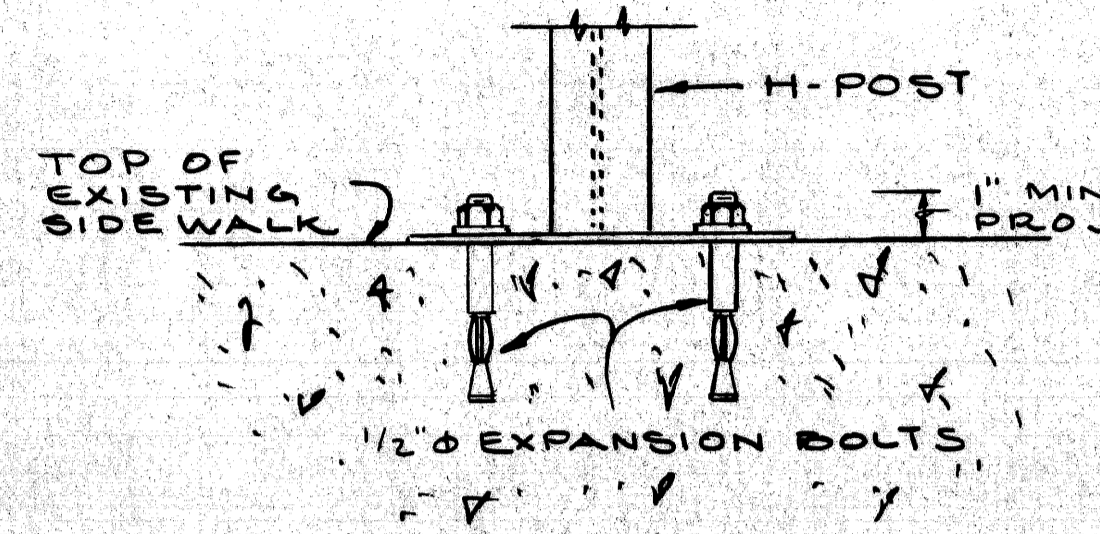
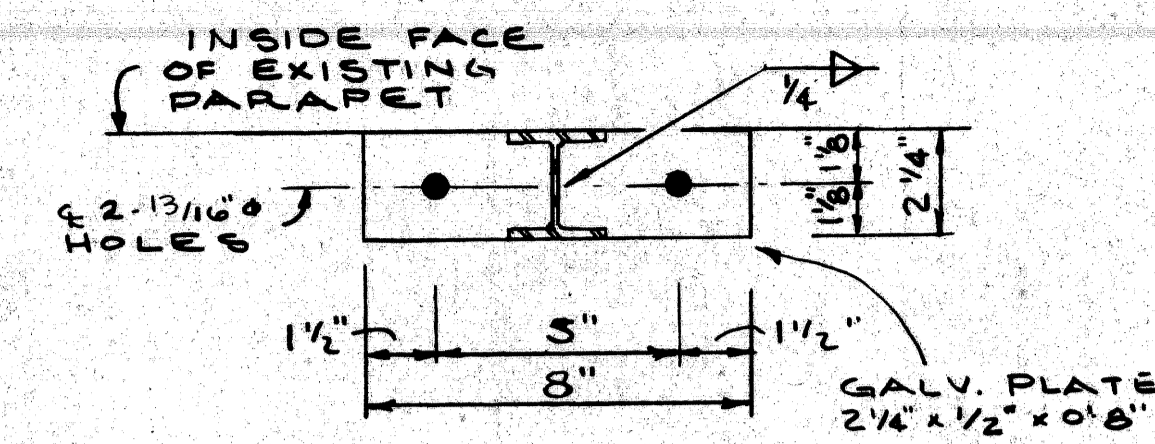


1. All underground connections shall be coldweld, thermite weld, gas or arc weld.
2. Exposed connections may be split bolt or clamp type.
3. Ground wire shall be #2 AWG stranded soft drawn copper wire.
4. Resistance to ground for any continuous section of fence shall not exceed 25 ohms per ground rod.

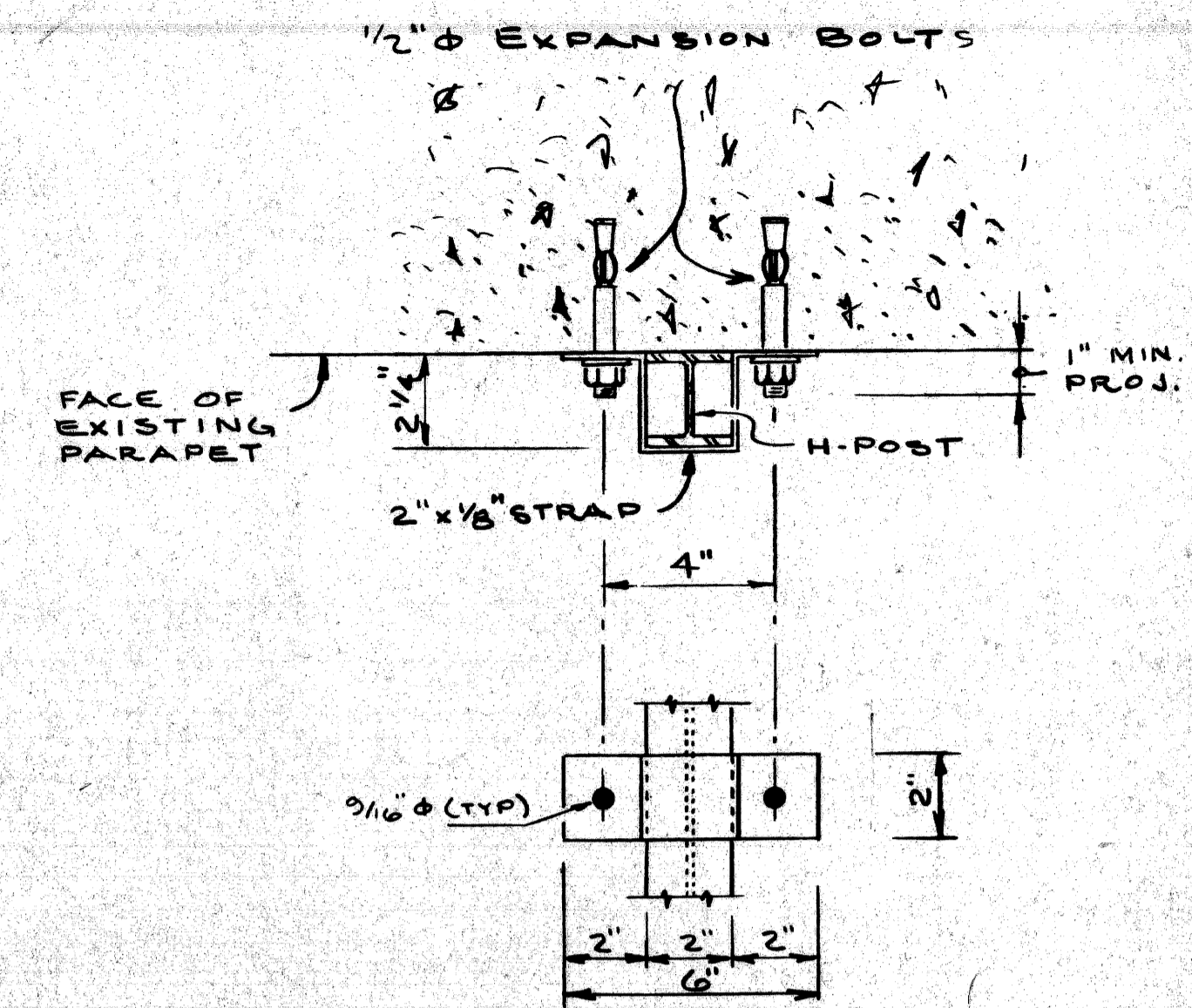
GROUNDING DETAIL



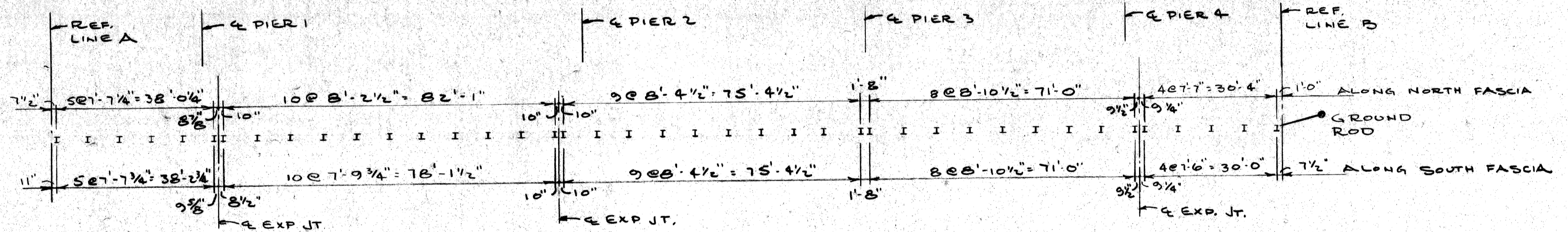
EXPANSION SLEEVE DETAIL



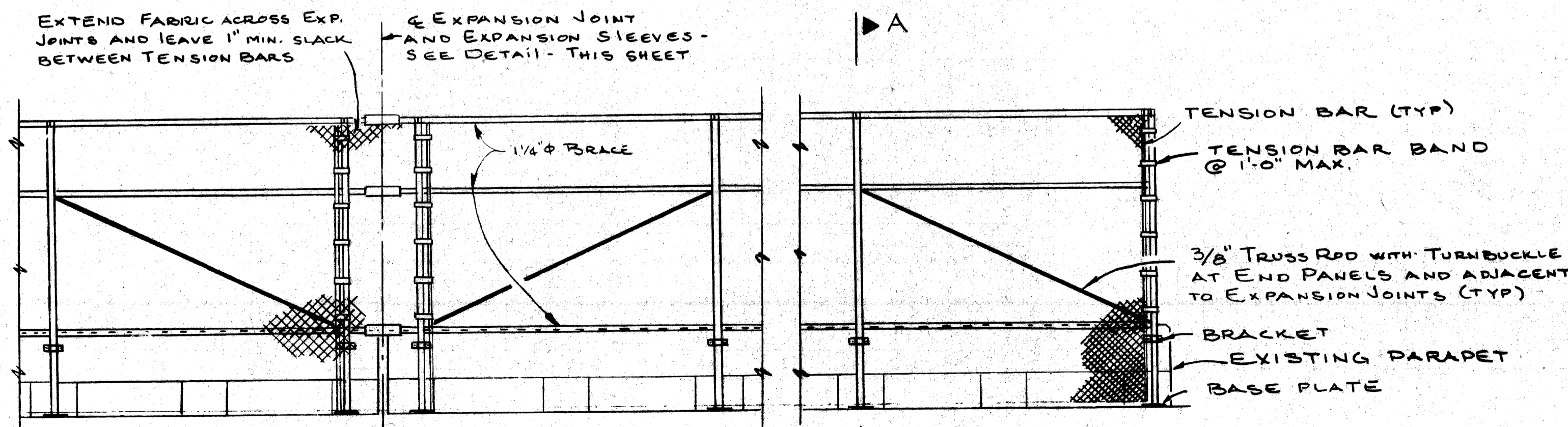
BASE PLATE DETAILS



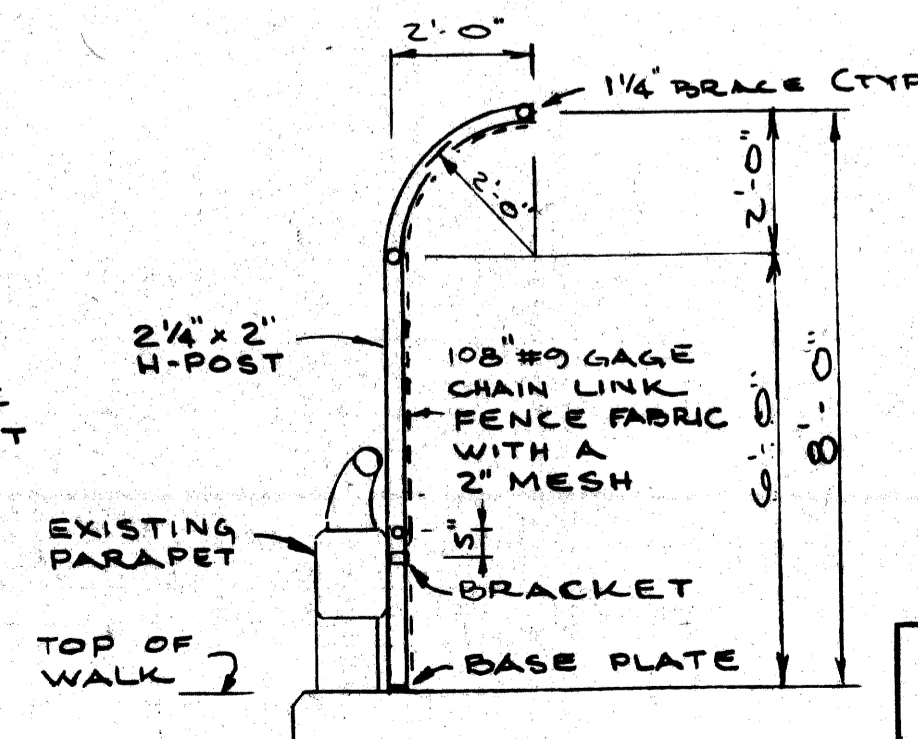
BRACKET DETAILS



PLAN



TYPICAL ELEVATION



SECTION A-A

PLANS PREPARED BY
CITY OF DETROIT
 DEPARTMENT OF PUBLIC WORKS
 CITY ENGINEERS OFFICE

APPROVED: *T.E.M. [Signature]*
 STRUCTURAL ENGINEER

JOB No. 79-22-26 J

MICHIGAN DEPARTMENT OF TRANSPORTATION
 PORTER ST OVER I-75
 PROTECTIVE SCREENING DETAILS

REVISIONS			
NO.	DESCRIPTION	DATE	BY

DATE: 3-20-81
 DRAWN BY: [Signature]
 CHECKED BY: [Signature]
 SHEET 15 OF 82194

