

FENCING NOTES

ALL WORK SHALL CONFORM TO MDOT STANDARD SPECIFICATIONS FOR CONSTRUCTION, 1979 EDITION
 ALL FENCE FABRIC SHALL BE GALVANIZED #9 GAGE WITH A 2" MESH AND WITH KNUCKLING AT THE BOTTOM SELVAGE.

THE POSTS SHALL BE 2 1/4" DIA. GALVANIZED H-POSTS WEIGHING 4.1 LBS. ROUND POSTS HAVING A 2 1/8" DIA. WEIGHING 3.7 LBS. GALVANIZED, MAY BE USED WITH SIMILAR CONNECTION DETAILS.

THE NOMINAL 1 1/2" DIA. BRACES SHALL BE 15# GALV. STEEL PIPE OR TUBING WEIGHING 2.7 LBS. GALVANIZED

ALL POSTS AND TUBING SHALL BE FURNISHED WITH THE MANUFACTURER'S STANDARD CONNECTIONS AND ITS MINIMUM WEIGHT SHALL BE WITHIN 5% OF THAT SPECIFIED.

POSTS AND TUBING SHALL BE BENT IN THE SHOP AS SHOWN ON THE PLANS

ALL COMPONENTS ARE TO BE GALVANIZED. BOLTS, NUTS AND WASHERS ARE TO BE GALVANIZED IN ACCORDANCE WITH ASTM A 153.

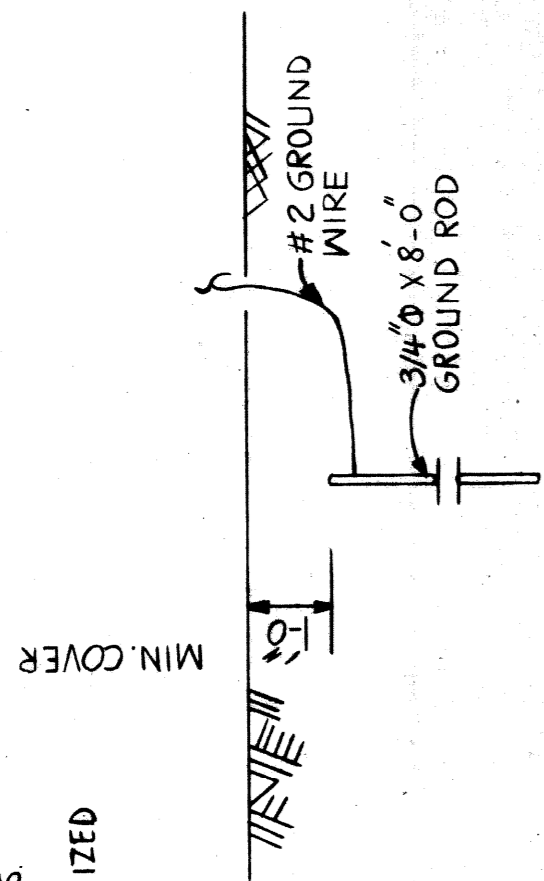
TENSION BARS SHALL BE 3/4" X 1/4" GALVANIZED STEEL.

CONTRACTOR SHALL VERIFY FIELD CONDITIONS BEFORE FABRICATION.

CARE IS TO BE TAKEN IN PLACING EXPANSION BOLTS AND BRACKETS SO AS TO INSURE THAT THE BRACKETS HOLD THE POSTS FIRMLY AGAINST CONCRETE. SHIM IF NECESSARY.

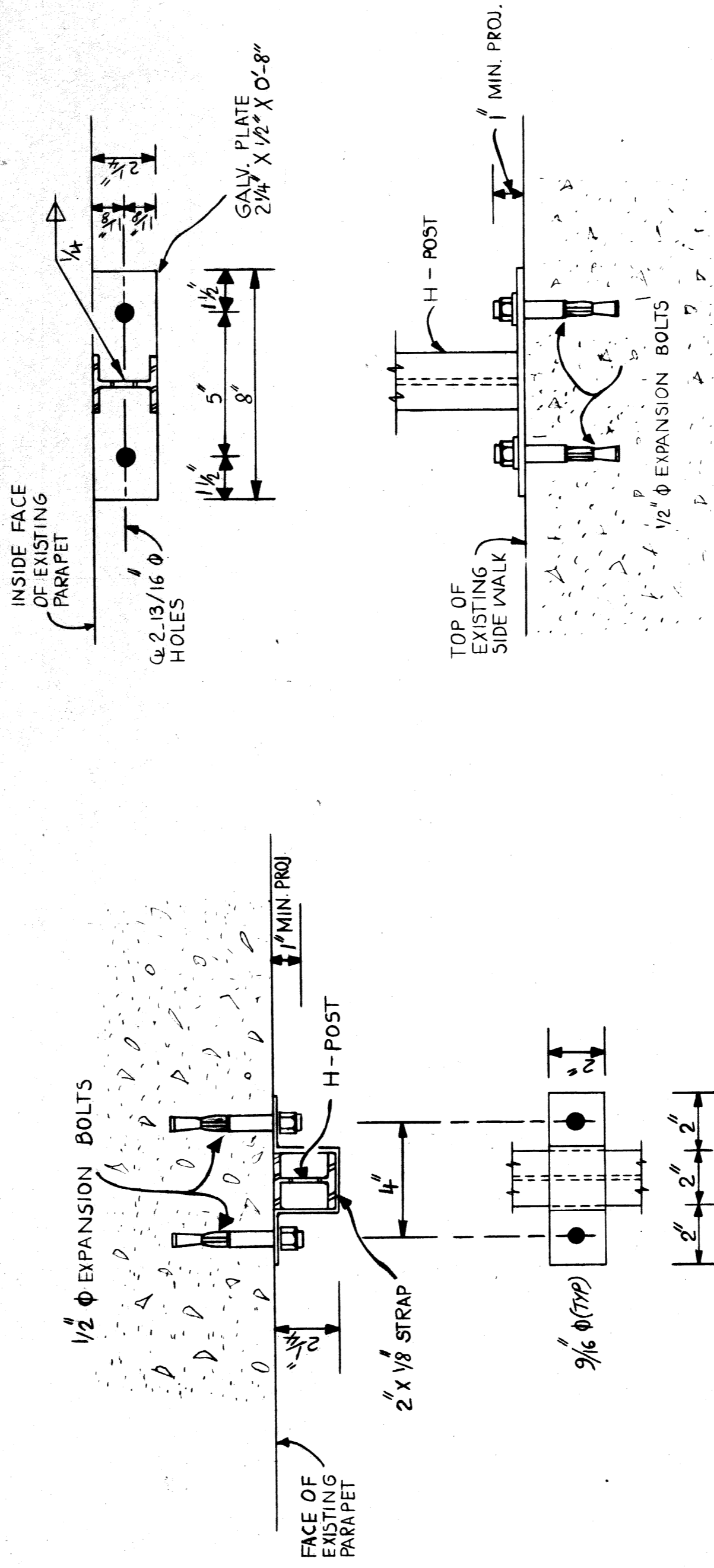
PEDESTRIAN FENCING STRUCTURES SHALL INCLUDE THE FABRIC, POSTS, BRACES, EXPANSION BOLTS, BRACKETS AND ALL SUITABLE CONNECTIONS AND FITTINGS.

1/2" DIA. EXPANSION BOLTS SHALL BE PHILLIPS RED HEAD GALVANIZED WEDGE ANCHORS 1/2" X 12" OR APPROVED EQUAL.



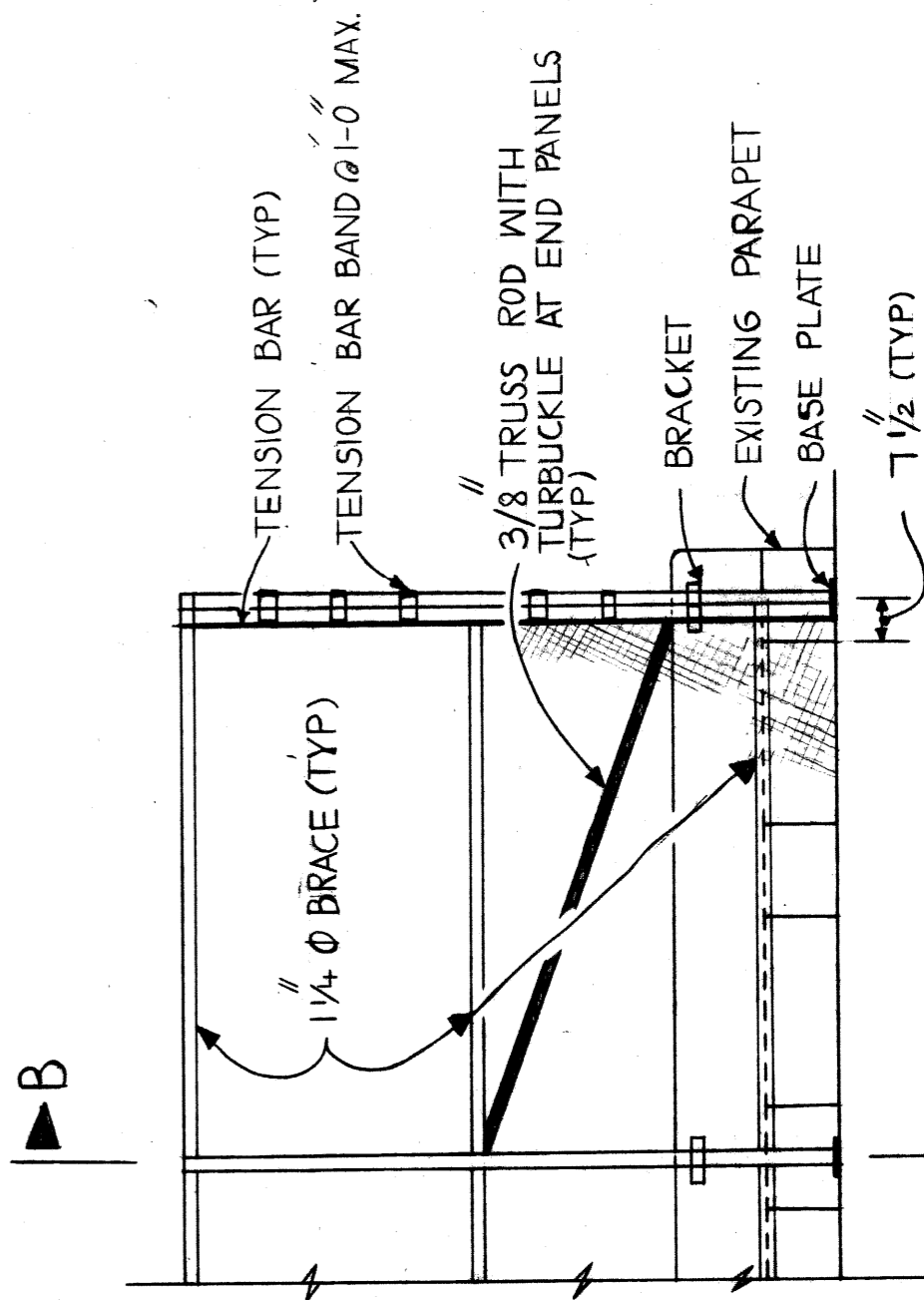
1. ALL UNDERGROUND CONNECTIONS SHALL BE CALDWELL THERMITE WELD GAS OR ARC WELD.
2. EXPOSED CONNECTIONS MAY BE SPLIT BOLT OR CLAMP TYPE.
3. GROUND WIRE SHALL BE #2 AWG STRANDED SOFT DRAWN COPPER WIRE.

GROUNDING DETAIL

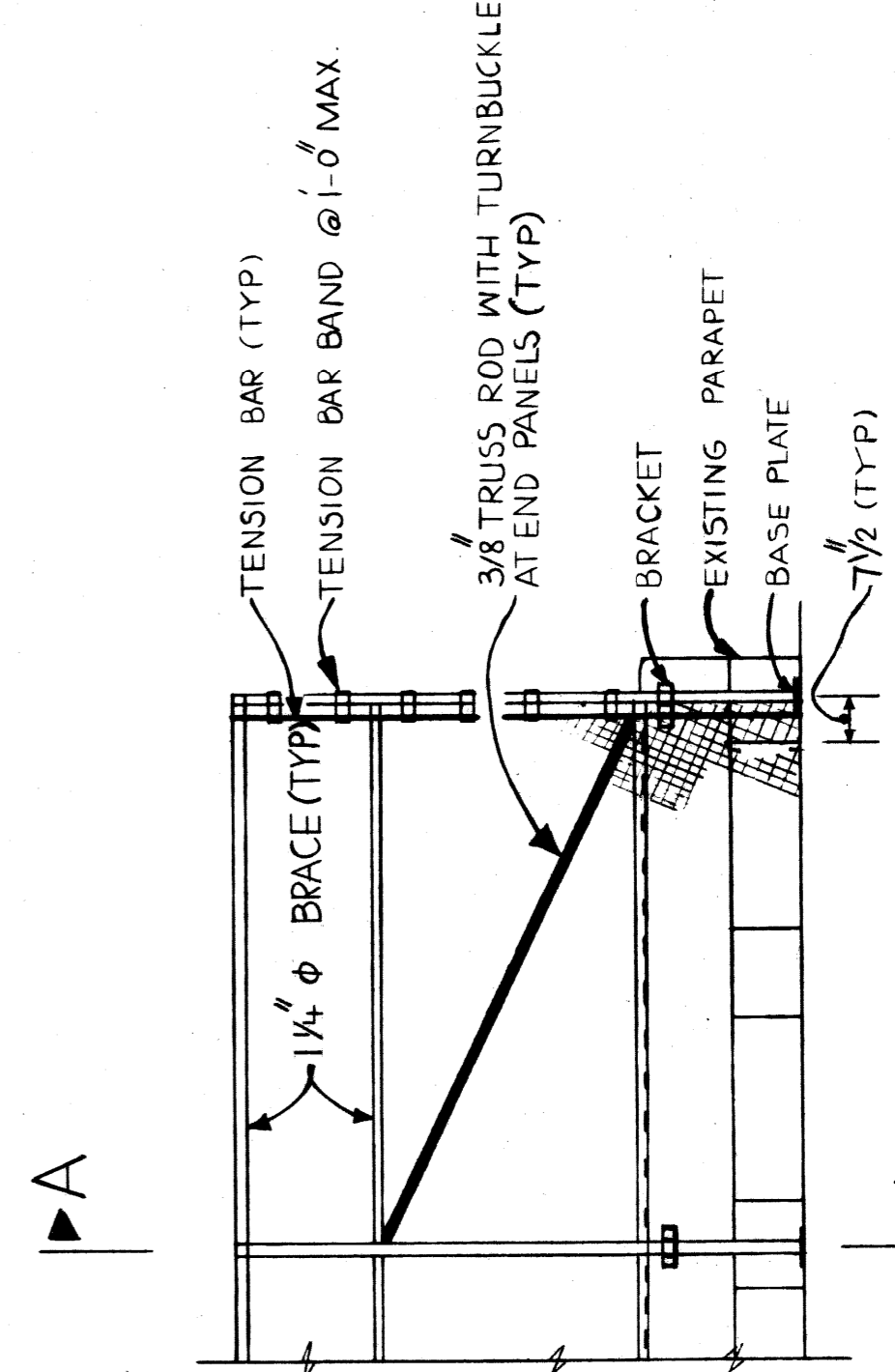


BRACKET DETAILS

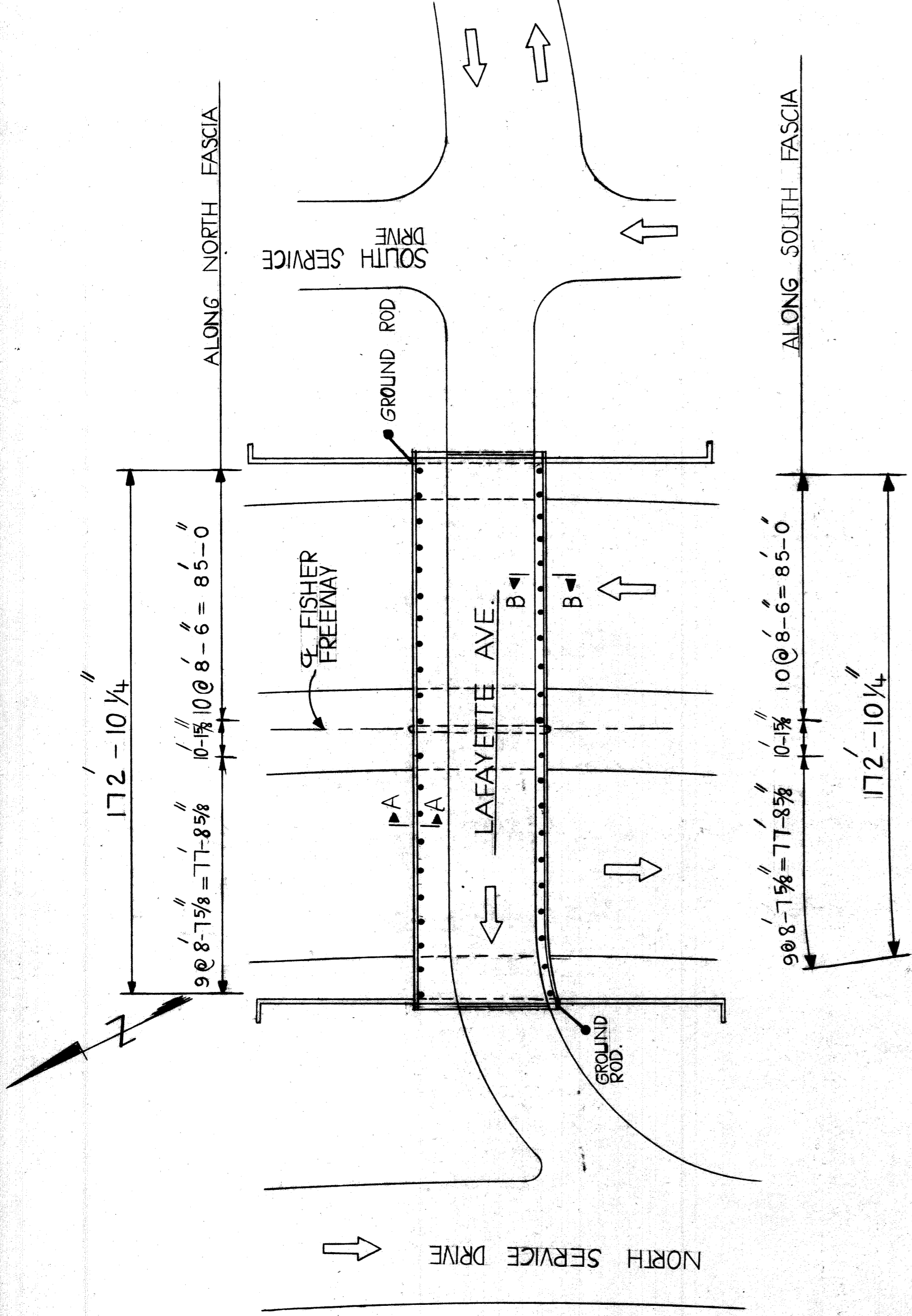
BASE PLATE DETAILS



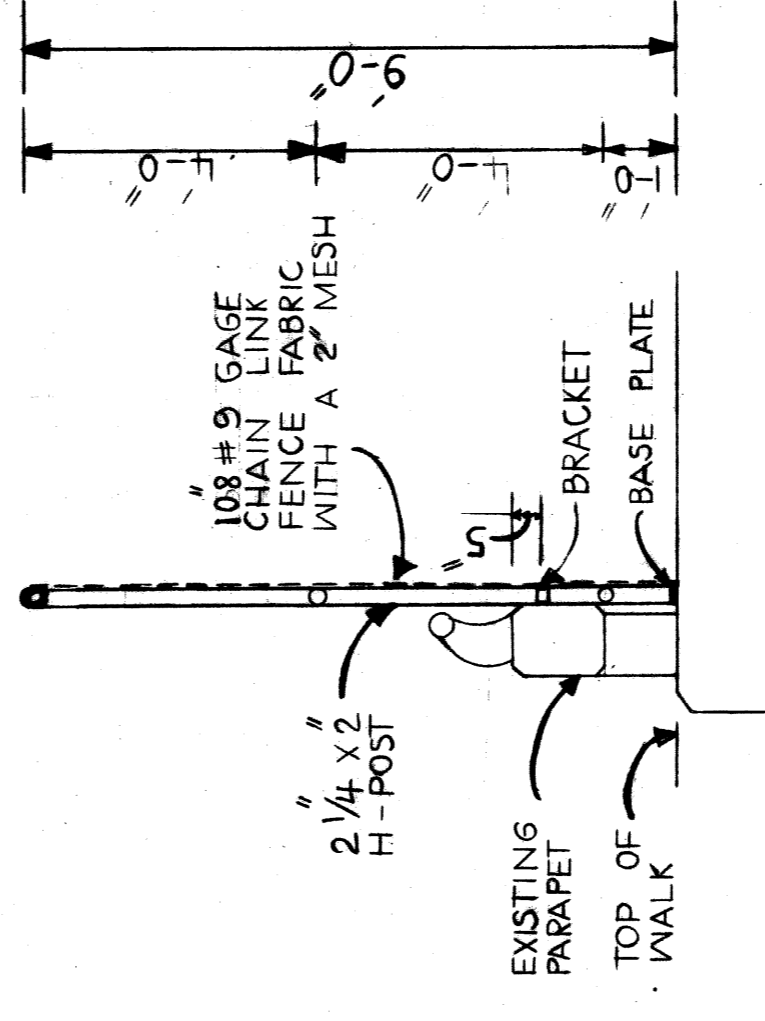
TYPICAL ELEVATION



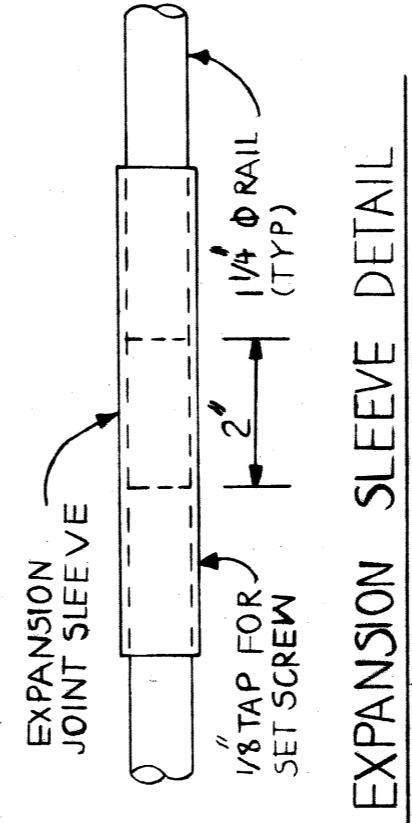
TYPICAL ELEVATION



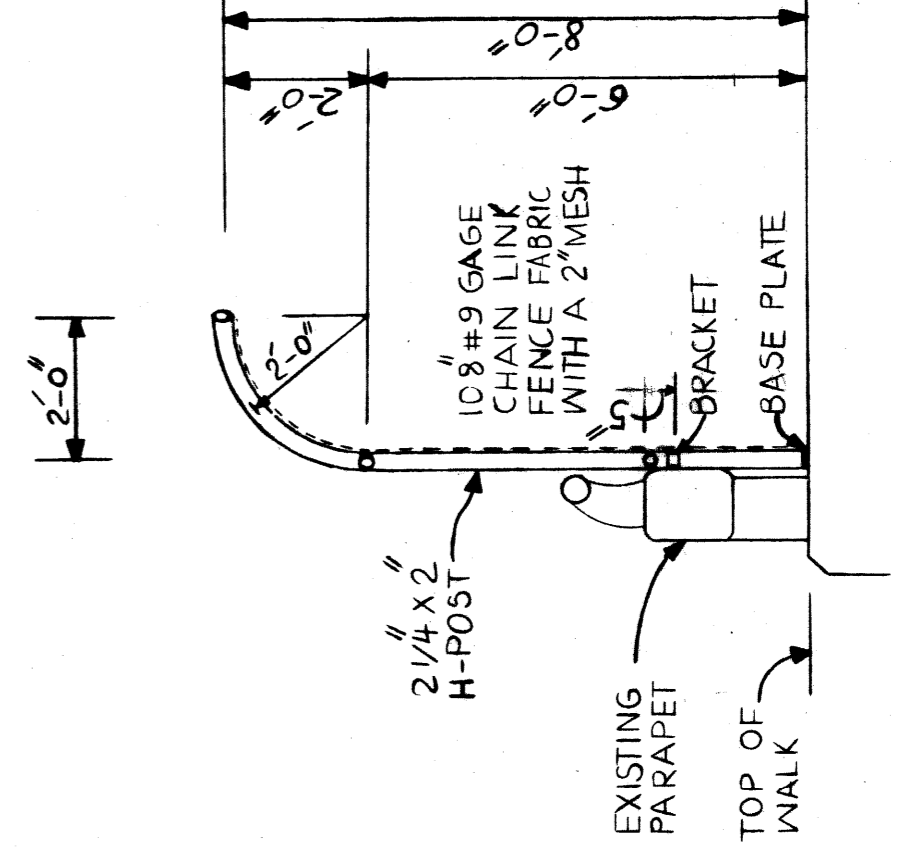
PLAN



SECTION B-B
ALONG SOUTH FASCIA ONLY



EXPANSION SLEEVE DETAIL



SECTION A-A
ALONG NORTH FASCIA ONLY

QUANTITIES	ITEM	UNIT	AMOUNT
	PEDESTRIAN FENCING, STRUCTURES, S-14	S.F.	3111
	ELECTRICAL GROUNDING SYSTEM, S-14	L.S.	1

MICHIGAN DEPARTMENT OF TRANSPORTATION
 LAFAYETTE BLVD. OVER I-75
 PROTECTIVE SCREENING DETAILS

PLANS PREPARED BY
CITY OF DETROIT
 CITY ENGINEERS OFFICE

APPROVED _____
 STRUCTURAL ENGINEER

JOB NO.

REVISIONS

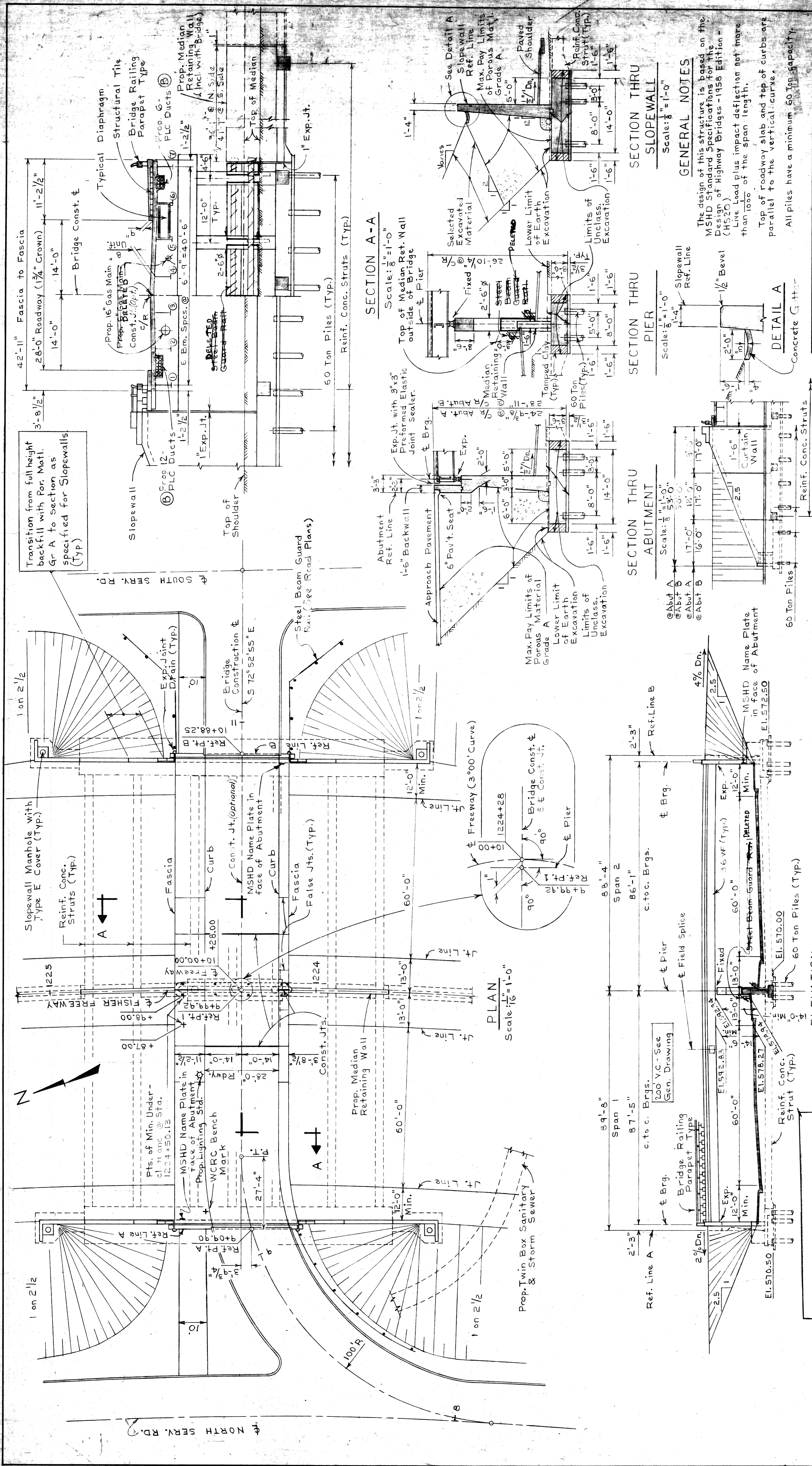
DESCRIPTION

DATE

BY

NO.	DATE	BY	DESCRIPTION
1	3-83	N.H.	KARBER
2	3-83	N.H.	N.H.
3	3-83	N.H.	N.H.

SHEET 14 OF 17
 S/4 OF 82194



REVISIONS

PLC Ducts	DEC 12-13-65
-----------	--------------

EXISTING BRIDGE DETAILS
(NOT FOR CONSTRUCTION)

COPY

AS BUILT: Add Med. Wall Cape Pier. DKC 4-16-69

MISCELLANEOUS QUANTITIES

Porous Material, Grade A (Compacted in Place)	2,100	Cu. Yds.
---	-------	----------

GENERAL NOTES

The design of this structure is based on the MSHD Standard Specifications for the Design of Highway Bridges - 1958 Edition - (HS20).
Line Load plus impact deflection not more than 1/1000 of the span length.
Top of roadway slab and top of curbs are parallel to the vertical curve.
All piles have a minimum 60 Ton capacity.

GENERAL PLAN OF STRUCTURE

MICHIGAN STATE HIGHWAY DEPARTMENT
APPROVED SHEET 15 OF 17

PLANS PREPARED BY THE BOARD OF WAYNE COUNTY ROAD COMMISSIONERS
PHILIP J. NEUDECK
WILLIAM E. KREGER
AL BARBOUR

I-75 FISHER FREEWAY UNDER LAFAYETTE BLVD.

STATE PROJECT NO. 1325 207

DATE: 12-14-65

STATE PROJECT NO. 1325 207

DATE: 12-14-65

STATE PROJECT NO. 1325 207

DATE: 12-14-65

STATE PROJECT NO. 1325 207

DATE: 12-14-65