

FENCING NOTES

ALL WORK SHALL CONFORM TO MDOT STANDARD SPECIFICATIONS FOR CONSTRUCTION, 1979 EDITION

ALL FENCE FABRIC SHALL BE GALVANIZED. #9 GAGE WITH A 2" MESH AND WITH KNUCKLING AT THE BOTTOM SELVAGE.

THE POSTS SHALL BE 2 1/4" X 2" GALVANIZED H-POSTS WEIGHING 4.1 P.L.F. ROUND POSTS HAVING A 2 3/8" OD WEIGHING 5.79 P.L.F., GALVANIZED, MAY BE USED WITH SIMILAR CONNECTION DETAILS.

THE NOMINAL 1 1/4" Ø BRACES SHALL BE 1 5/8" OD. STEEL PIPE OR TUBING WEIGHING 22.7 P.L.F. GALVANIZED

ALL POSTS AND TUBING SHALL BE FURNISHED WITH THE MANUFACTURERS STANDARD CONNECTIONS AND ITS MINIMUM WEIGHT SHALL BE WITHIN 5% OF THAT SPECIFIED.

POSTS AND TUBING SHALL BE BENT IN THE SHOP AS SHOWN ON THE PLANS.

ALL COMPONENTS ARE TO BE GALVANIZED. BOLTS, NUTS AND WASHERS ARE TO BE GALVANIZED IN ACCORDANCE WITH ASTM A 153.

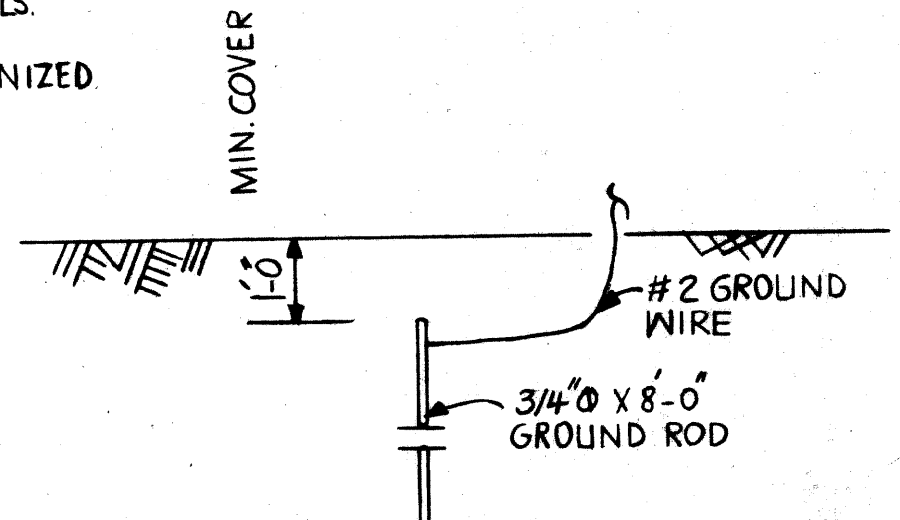
TENSION BARS SHALL BE 3/8" X 1/4" GALVANIZED STEEL.

CONTRACTOR SHALL VERIFY FIELD CONDITIONS BEFORE FABRICATION.

CARE IS TO BE TAKEN IN PLACING EXPANSION BOLTS AND BRACKETS SO AS TO INSURE THAT THE BRACKETS HOLD THE POSTS FIRMLY AGAINST CONCRETE. SHIM IF NECESSARY.

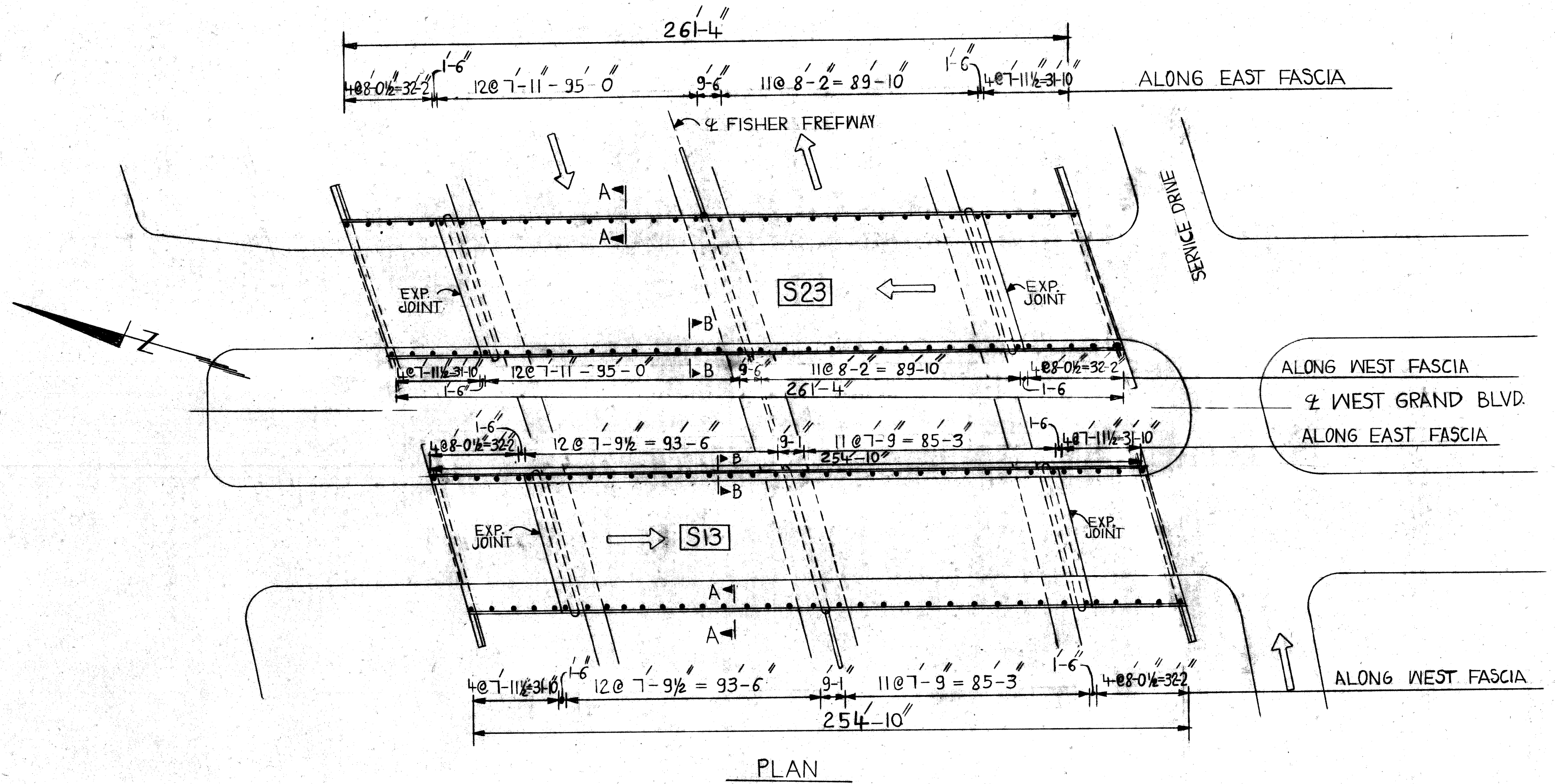
PEDESTRIAN FENCING STRUCTURES SHALL INCLUDE THE FABRIC, POSTS, BRACES, EXPANSION BOLTS, BRACKETS AND ALL SUITABLE CONNECTIONS AND FITTINGS.

1/2" Ø EXPANSION BOLTS SHALL BE PHILLIPS RED HEAD GALVANIZED WEDGE ANCHORS W/ S 1242 G OR APPROVED EQUAL.

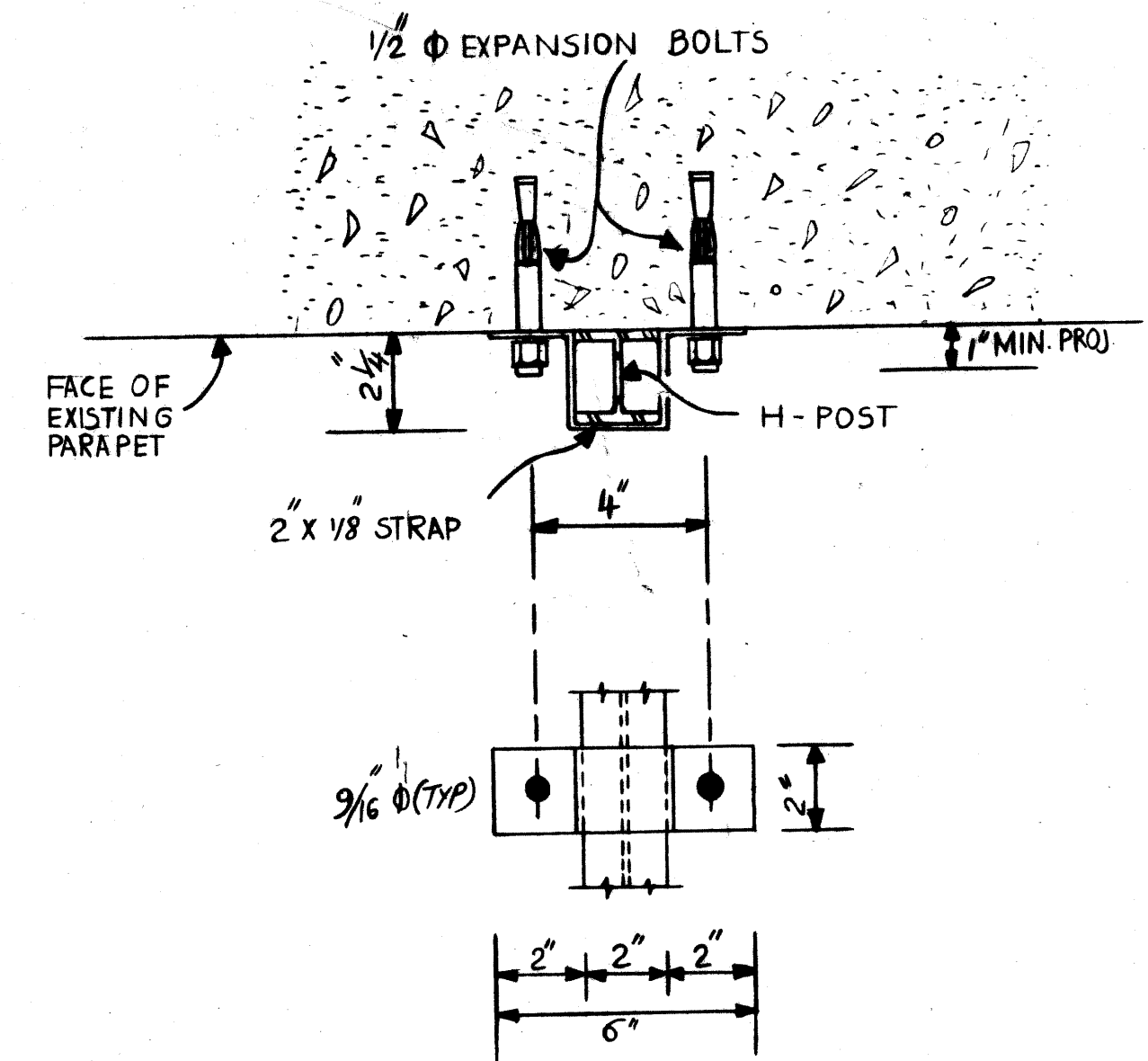


1. ALL UNDERGROUND CONNECTIONS SHALL BE CALDWELDED THERMITE WELD, GAS OR ARC WELD.
2. EXPOSED CONNECTIONS MAY BE SPLIT BOLT OR CLAMP TYPE.
3. GROUND WIRE SHALL BE #2 AWG STRANDED SOFT DRAWN COPPER WIRE.

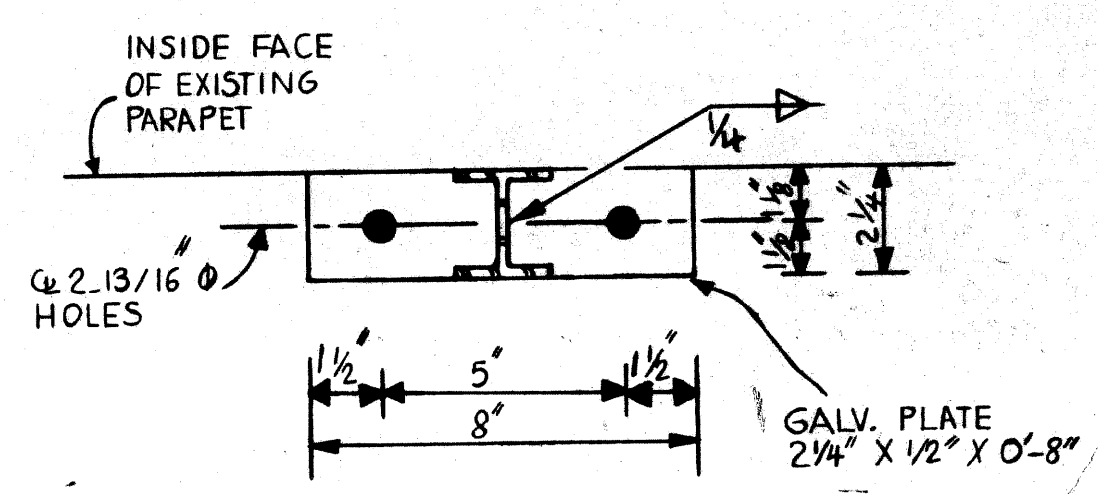
GROUNDING DETAIL



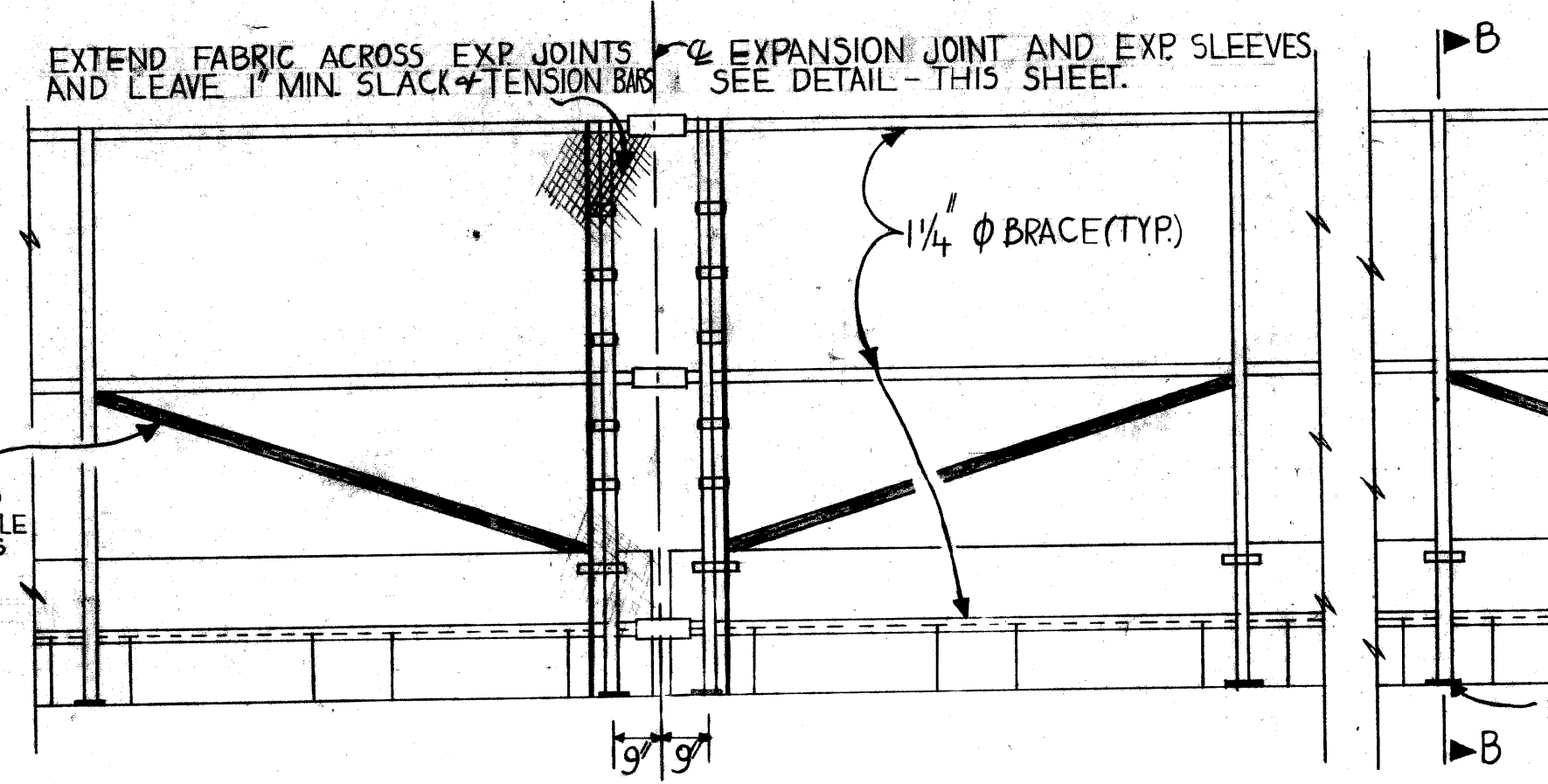
PLAN



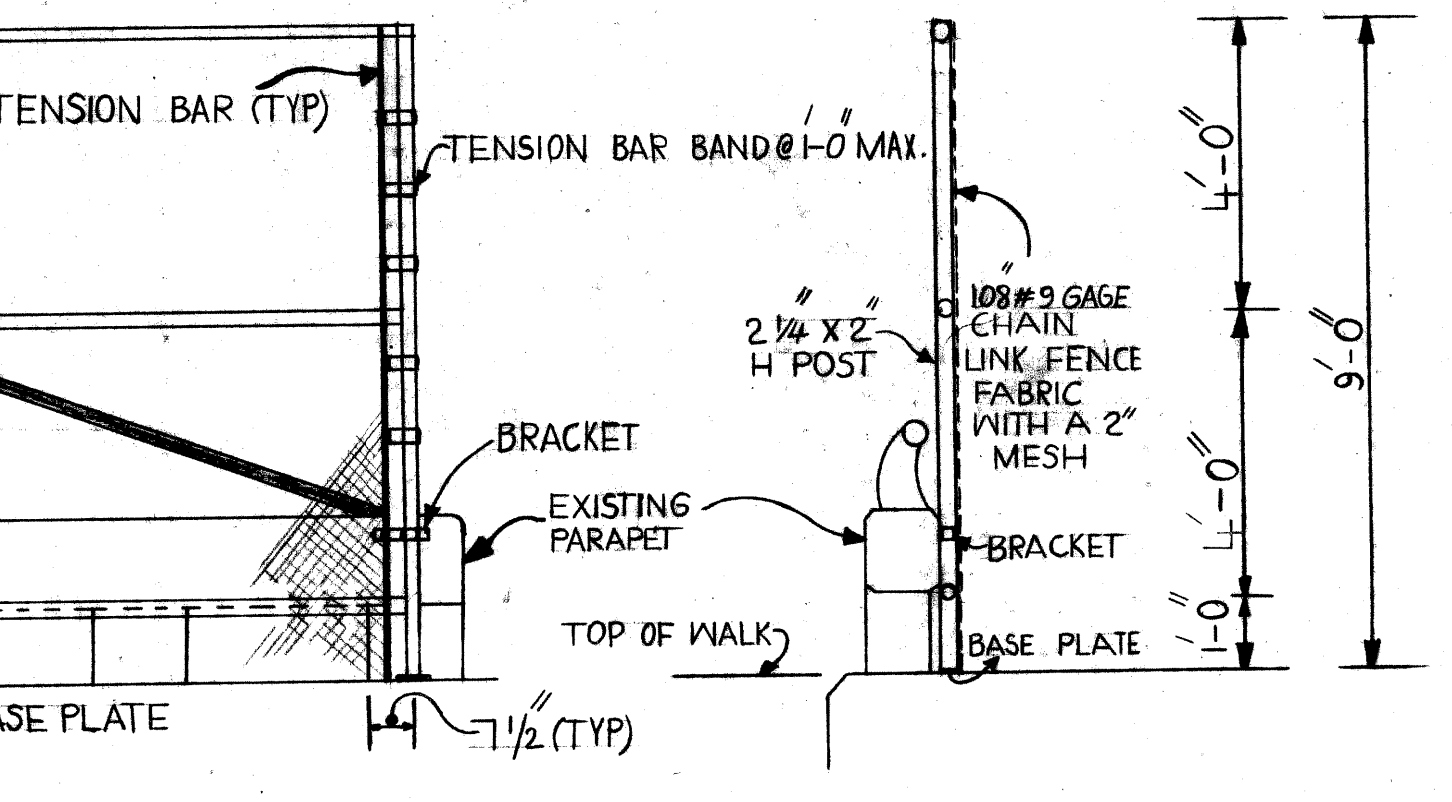
BRACKET DETAILS



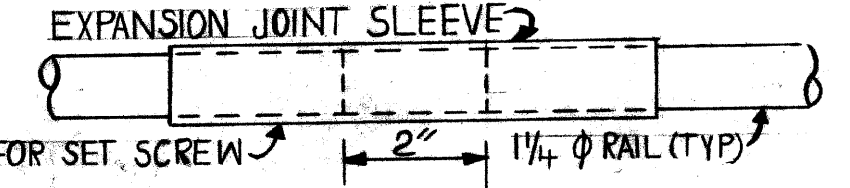
BASE PLATE DETAILS



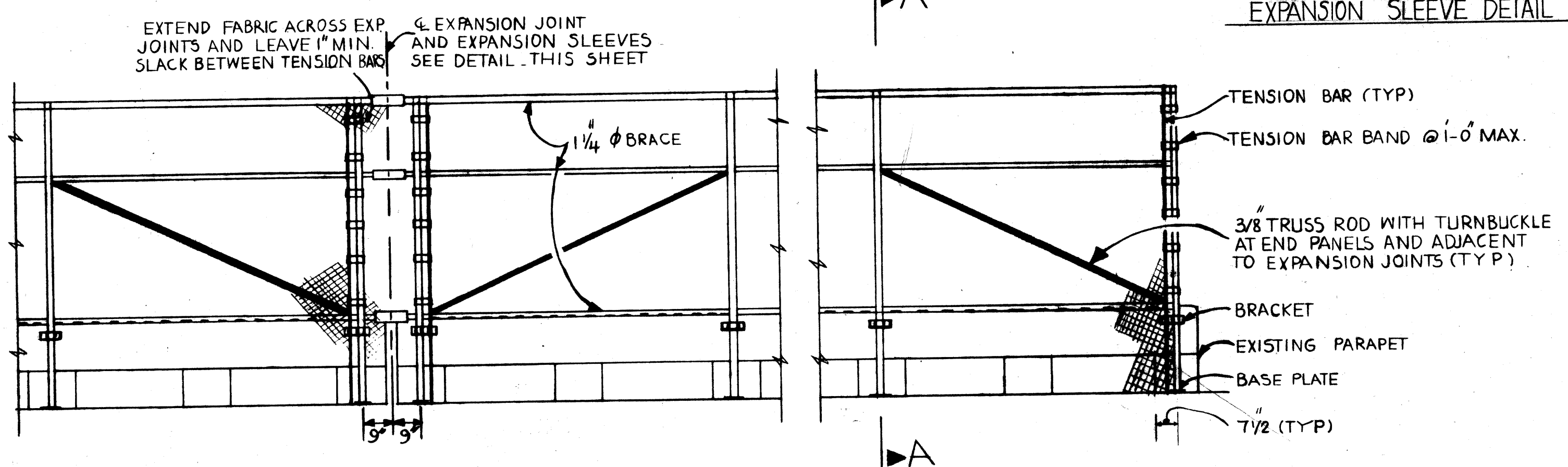
TYPICAL ELEVATION



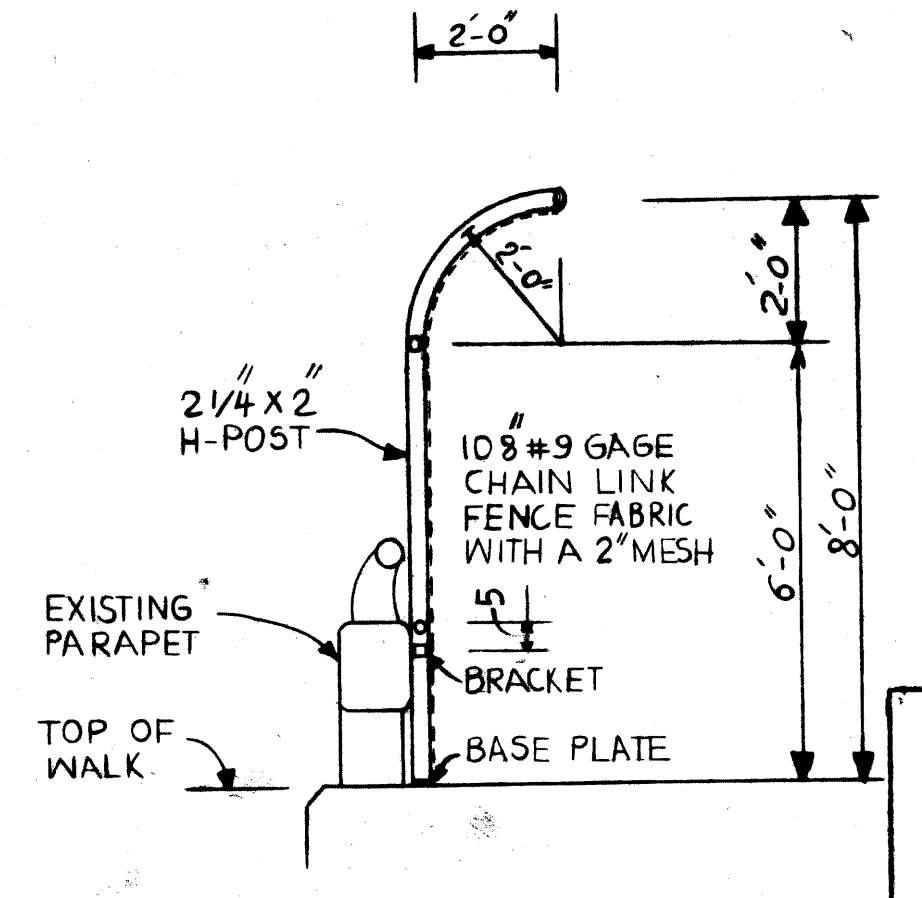
SECTION B-B
ALONG INSIDE FASCIAS



EXPANSION SLEEVE DETAIL



TYPICAL ELEVATION



SECTION A-A
ALONG OUTSIDE FASCIAS

QUANTITIES		
ITEM	UNIT	AMOUNT
PEDESTRIAN FENCING, STRUCTURES - S13	S.F.	4587
ELECTRICAL GROUNDING SYSTEM - S13	L.S.	1
PEDESTRIAN FENCING, STRUCTURES - S23	S.F.	4704
ELECTRICAL GROUNDING SYSTEM - S23	L.S.	1

PLANS PREPARED BY
CITY OF DETROIT
CITY ENGINEERS OFFICE

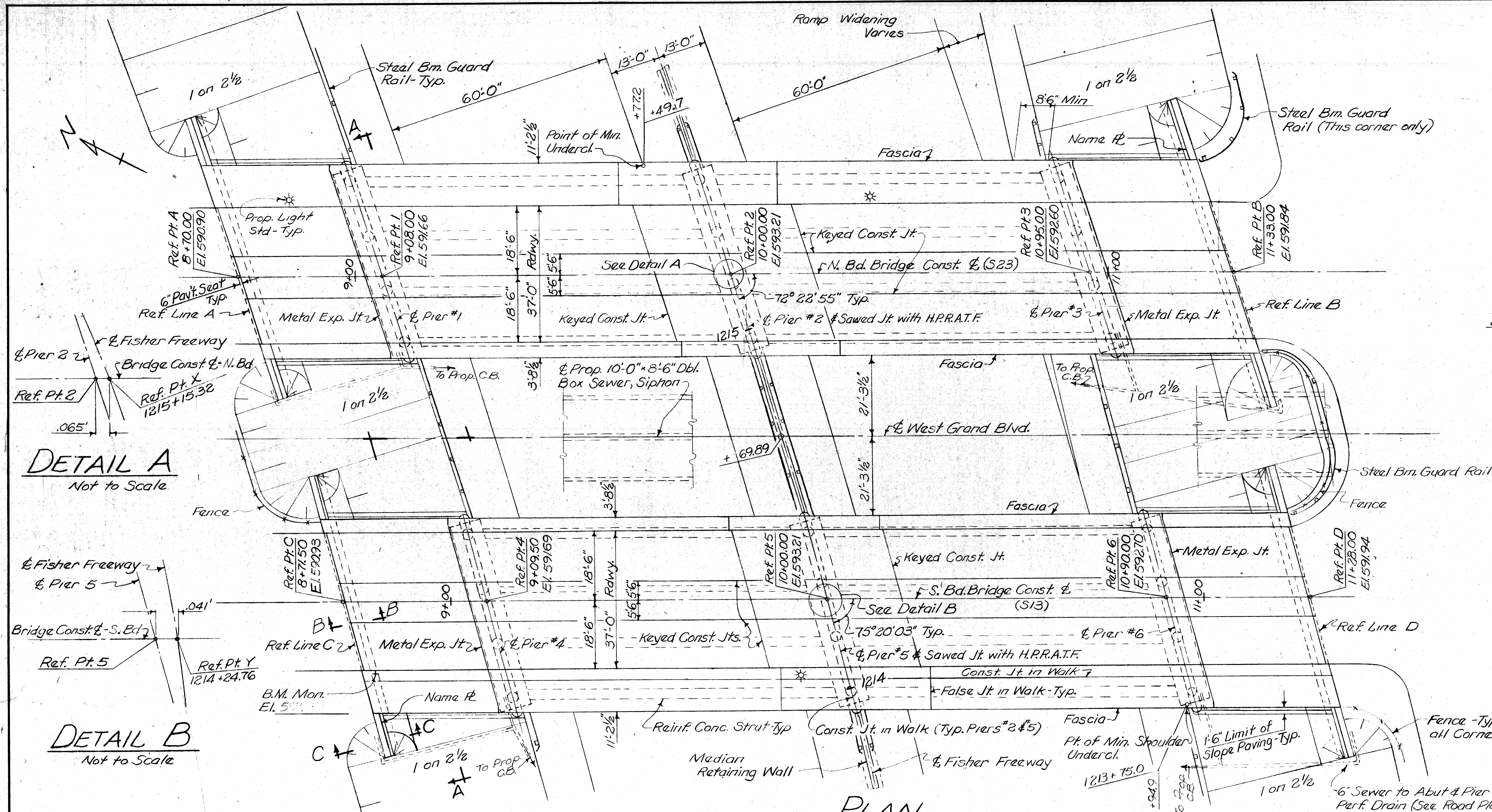
APPROVED: _____
STRUCTURAL ENGINEER

JOB No. _____

MICHIGAN DEPARTMENT OF TRANSPORTATION
WEST GRAND BLVD. OVER I 75
PROTECTIVE SCREENING DETAILS

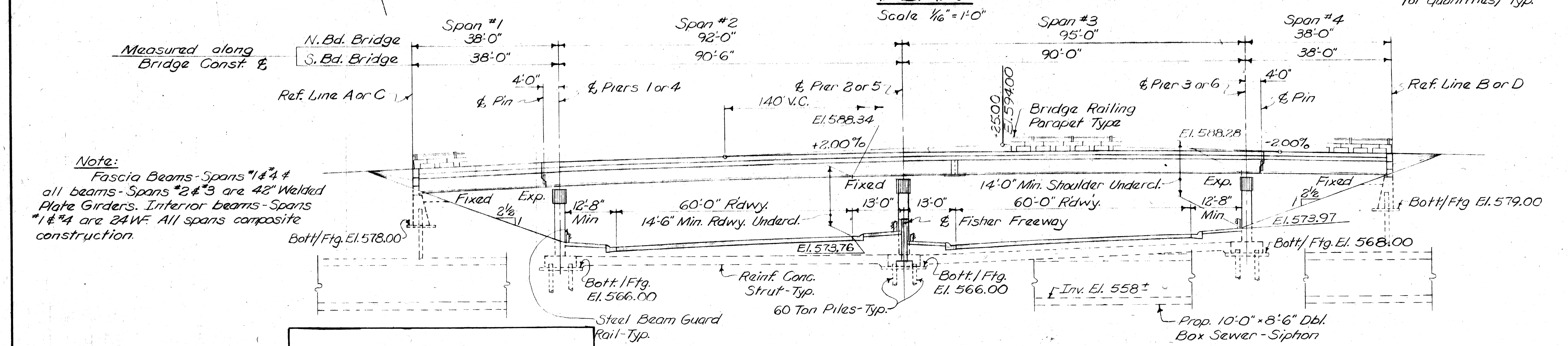
REVISIONS			
NO.	DESCRIPTION	DATE	BY

ROAD BOSS	KARBER	3-83
DRAWN BY	N.H.	3-83
CHECKED BY	RAK	3-83
SHEET 12 OF 17		
S13 & S23	OF 82194	

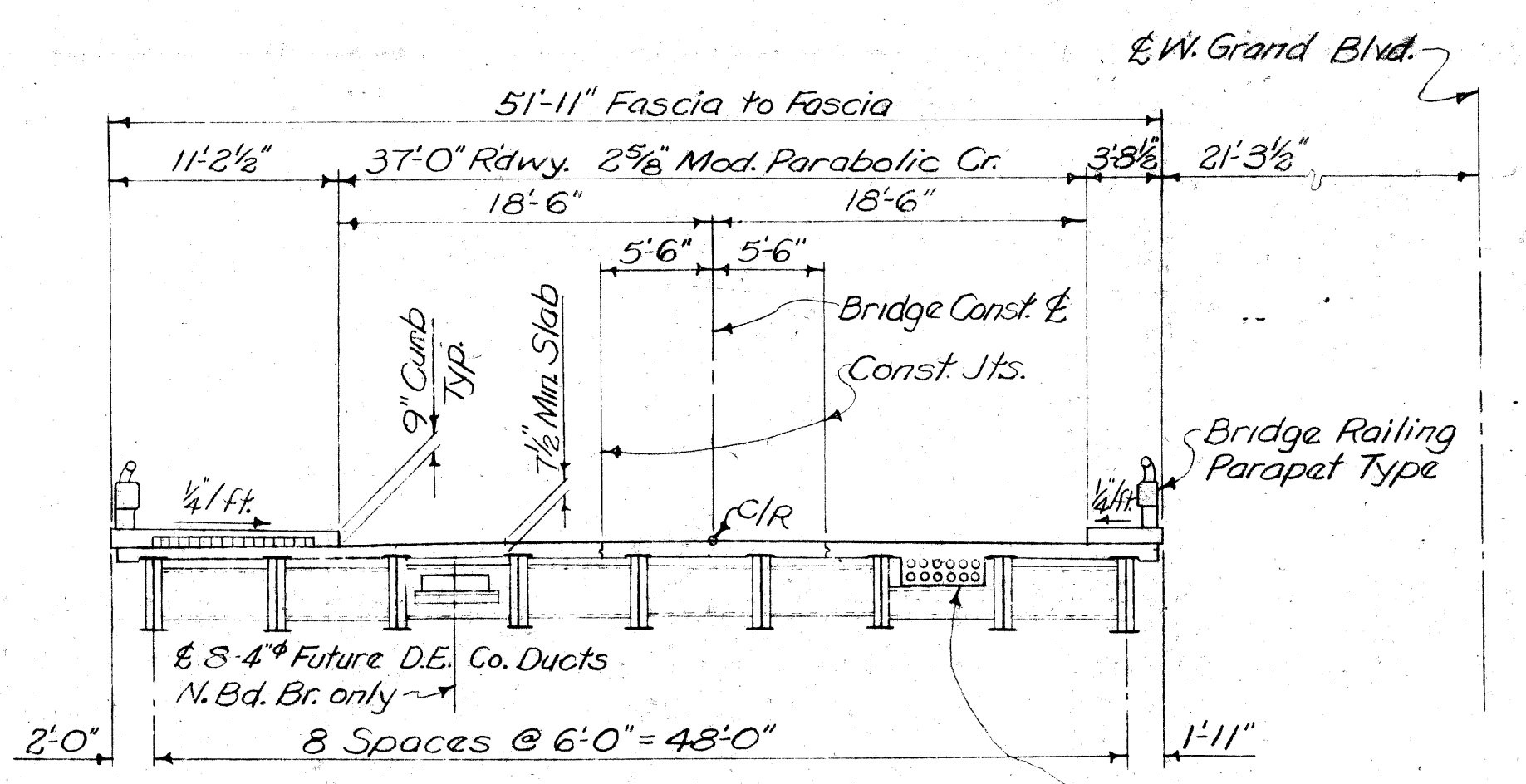


DETAIL A
Not to Scale

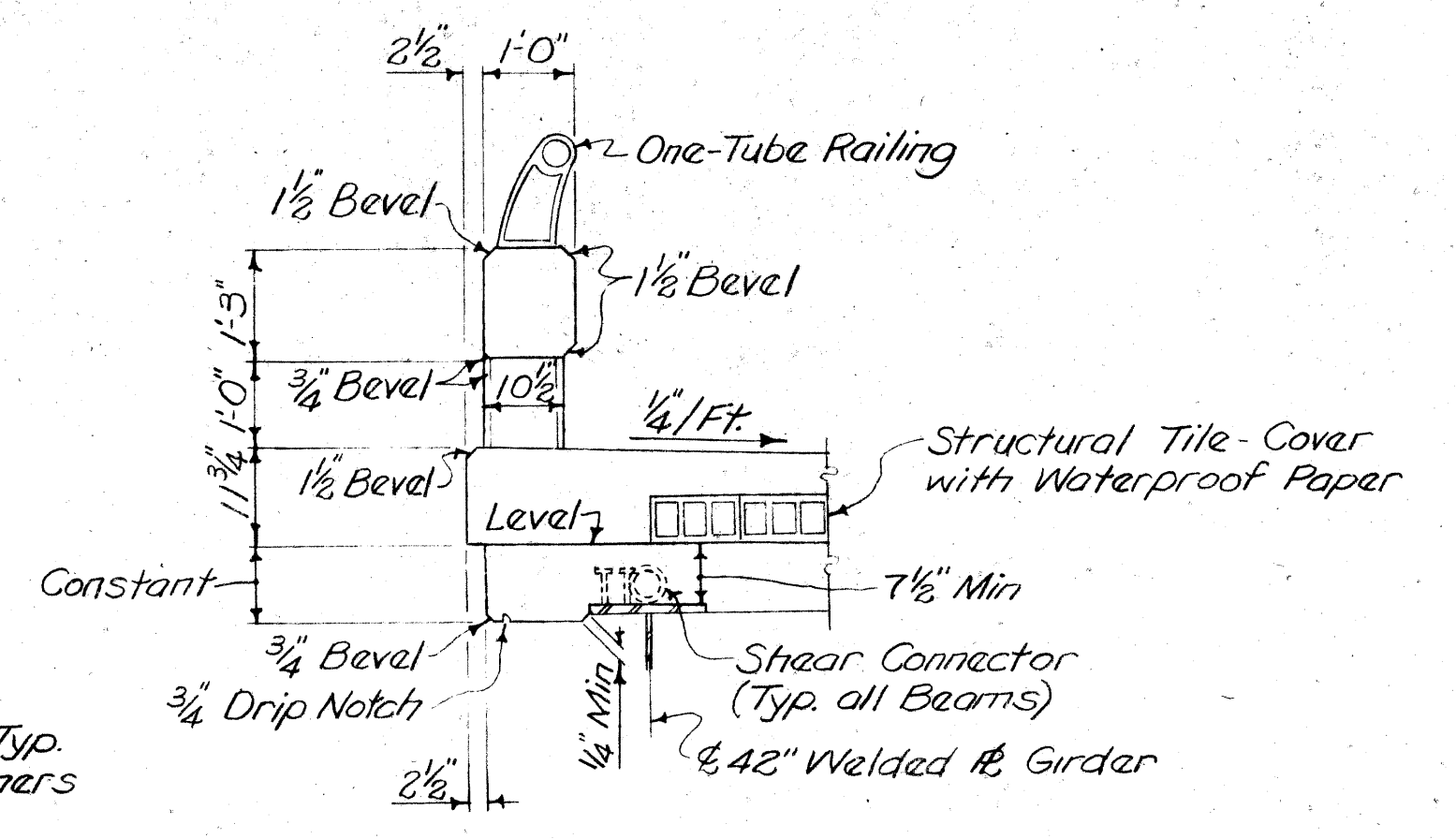
DETAIL B
Not to Scale



ELEVATION
Scale 1/8" = 1'-0"



TYPICAL DECK SECTION
Scale 1/8" = 1'-0"



FASCIA DETAIL
Scale 1/8" = 1'-0"

GENERAL NOTES

The design of this structure is based on the MSHD Specifications for the Design of Highway Bridges, 1958 edition HS-20 Loading. Live load plus impact deflection equals 1/1000 of span length and 1/350 of cantilever arm.
The top of roadway slab and tops of sidewalks are parallel to the vertical curve and tangents.
All piles shall have a minimum bearing capacity of 60 tons.
Grouted Riprap as Slope Protection-Class A is not to be used on this project.

REVISIONS

COPY
EXISTING BRIDGE DETAILS
(NOT FOR CONSTRUCTION)

SQUAD LEADER <i>R. Cummins</i>	DATE
DRAWN BY <i>Cummins</i>	1-22-65
CHECKED BY <i>McCurry</i>	1-25-65
CORRECT	

PLANS PREPARED BY THE BOARD OF
WAYNE COUNTY ROAD COMMISSIONERS
PHILIP J. NEUDECK WILLIAM E. KREGER AL BARBOUR

Work this Sheet with Street 310

MICHIGAN STATE HIGHWAY DEPARTMENT

APPROVED _____ SHEET 13 OF 17

I-75 FISHER FREEWAY
UNDER WEST GRAND BLVD.
GENERAL PLAN OF STRUCTURE

ISSUE NO.	DATE
2	3-1-65
COUNTY JOB NO.	SHEET NO.
13248	309
STATE PROJECT NO. 82194K	