

FENCING NOTES

ALL WORK SHALL CONFORM TO MDOT STANDARD SPECIFICATIONS FOR CONSTRUCTION, 1979 EDITION

ALL FENCE FABRIC SHALL BE GALVANIZED #9 GAGE WITH A 2" MESH AND WITH KNUCKLING AT THE BOTTOM SELVAGE.

THE POSTS SHALL BE 2 1/4" X 2" GALVANIZED H-POSTS WEIGHING 4.1 P.L.F. ROUND POSTS HAVING A 2 1/4" OD WEIGHING 3.79 P.L.F. GALVANIZED MAY BE USED WITH SIMILAR CONNECTION DETAILS.

THE NOMINAL 1 1/4" BRACES SHALL BE 1 1/2" OD. STEEL PIPE OR TUBING WEIGHING 22.7 P.L.F. GALVANIZED

ALL POSTS AND TUBING SHALL BE FURNISHED WITH THE MANUFACTURERS STANDARD CONNECTIONS AND ITS MINIMUM WEIGHT SHALL BE WITHIN 5% OF THAT SPECIFIED.

POSTS AND TUBING SHALL BE BENT IN THE SHOP AS SHOWN ON THE PLANS.

ALL COMPONENTS ARE TO BE GALVANIZED. BOLTS, NUTS AND WASHERS ARE TO BE GALVANIZED IN ACCORDANCE WITH ASTM A 153.

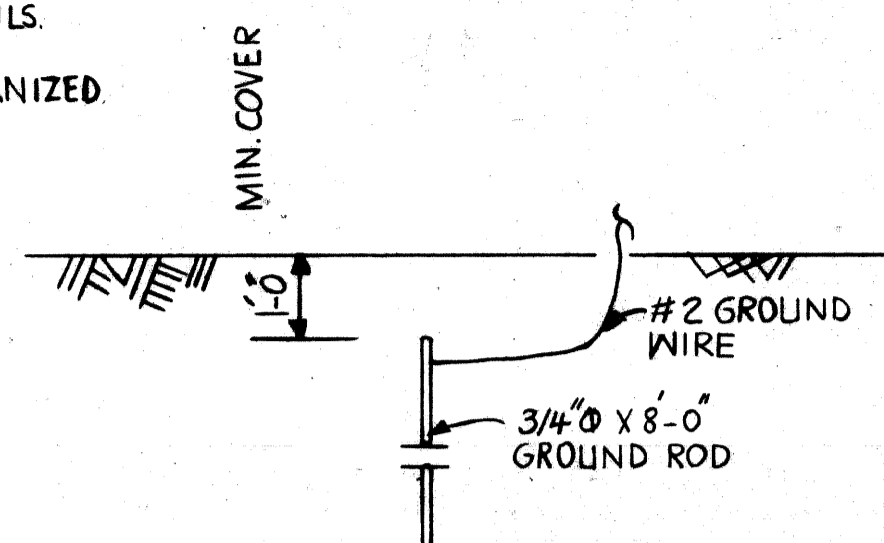
TENSION BARS SHALL BE 3/4" X 1/4" GALVANIZED STEEL.

CONTRACTOR SHALL VERIFY FIELD CONDITIONS BEFORE FABRICATION.

CARE IS TO BE TAKEN IN PLACING EXPANSION BOLTS AND BRACKETS SO AS TO INSURE THAT THE BRACKETS HOLD THE POSTS FIRMLY AGAINST CONCRETE. SHIM IF NECESSARY.

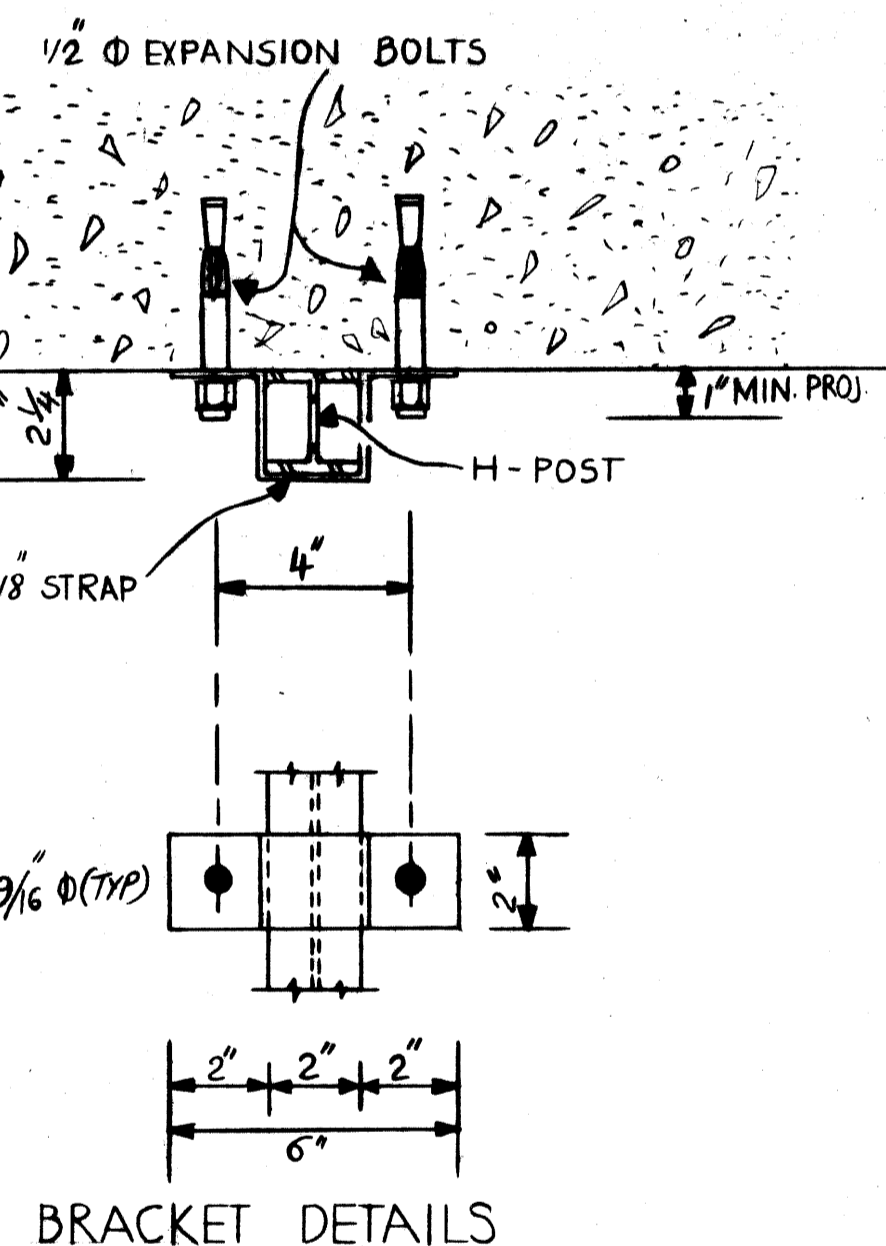
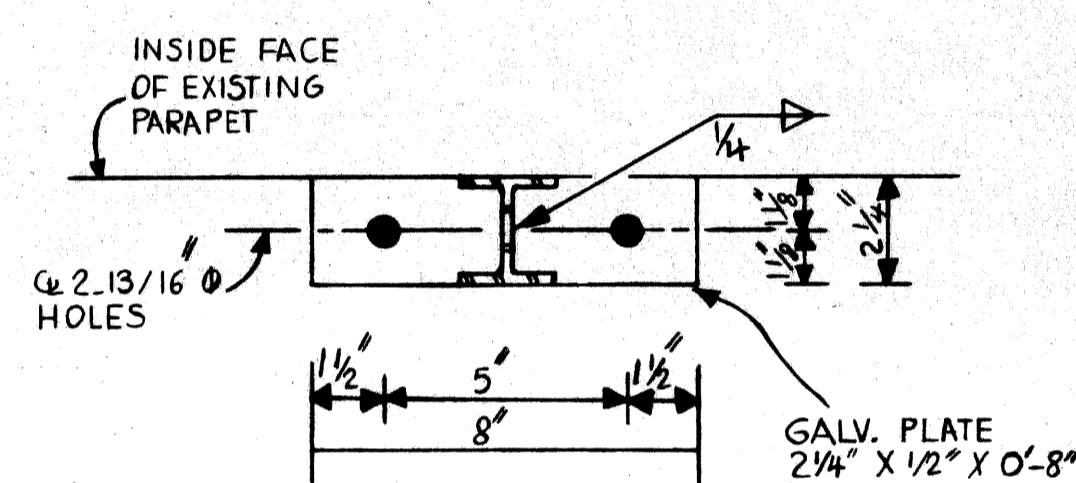
PEDESTRIAN FENCING STRUCTURES SHALL INCLUDE THE FABRIC, POSTS, BRACES, EXPANSION BOLTS, BRACKETS AND ALL SUITABLE CONNECTIONS AND FITTINGS.

1/2" EXPANSION BOLTS SHALL BE PHILLIPS RED HEAD GALVANIZED WEDGE ANCHORS W/ S 1242 G OR APPROVED EQUAL.

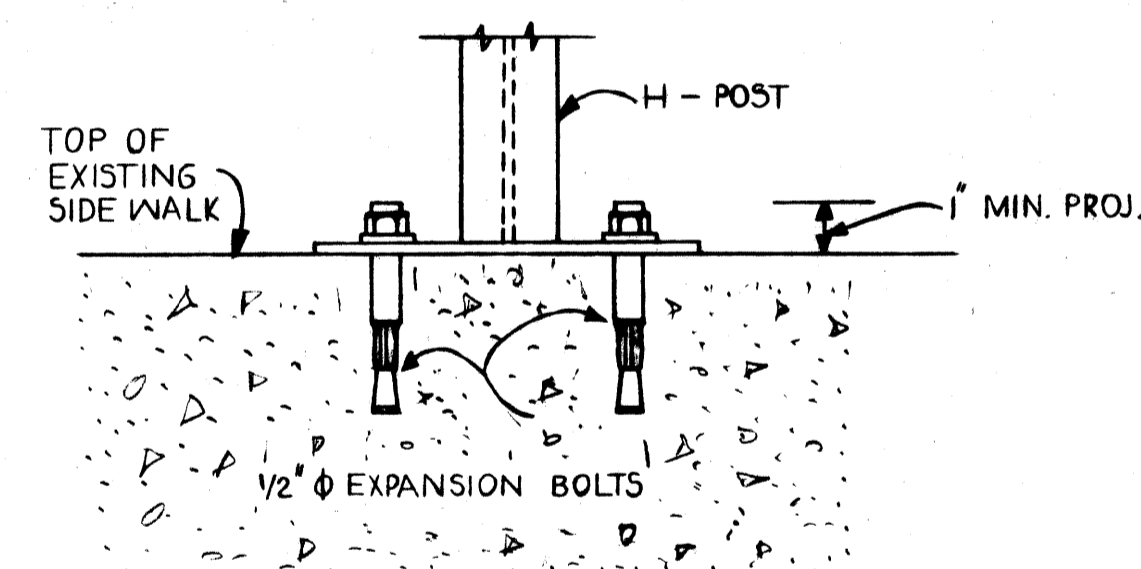


1. ALL UNDERGROUND CONNECTIONS SHALL BE CALDWELD THERMITE WELD, GAS OR ARC WELD.
2. EXPOSED CONNECTIONS MAY BE SPLIT BOLT OR CLAMP TYPE.
3. GROUND WIRE SHALL BE #2 AWG STRANDED SOFT DRAWN COPPER WIRE.

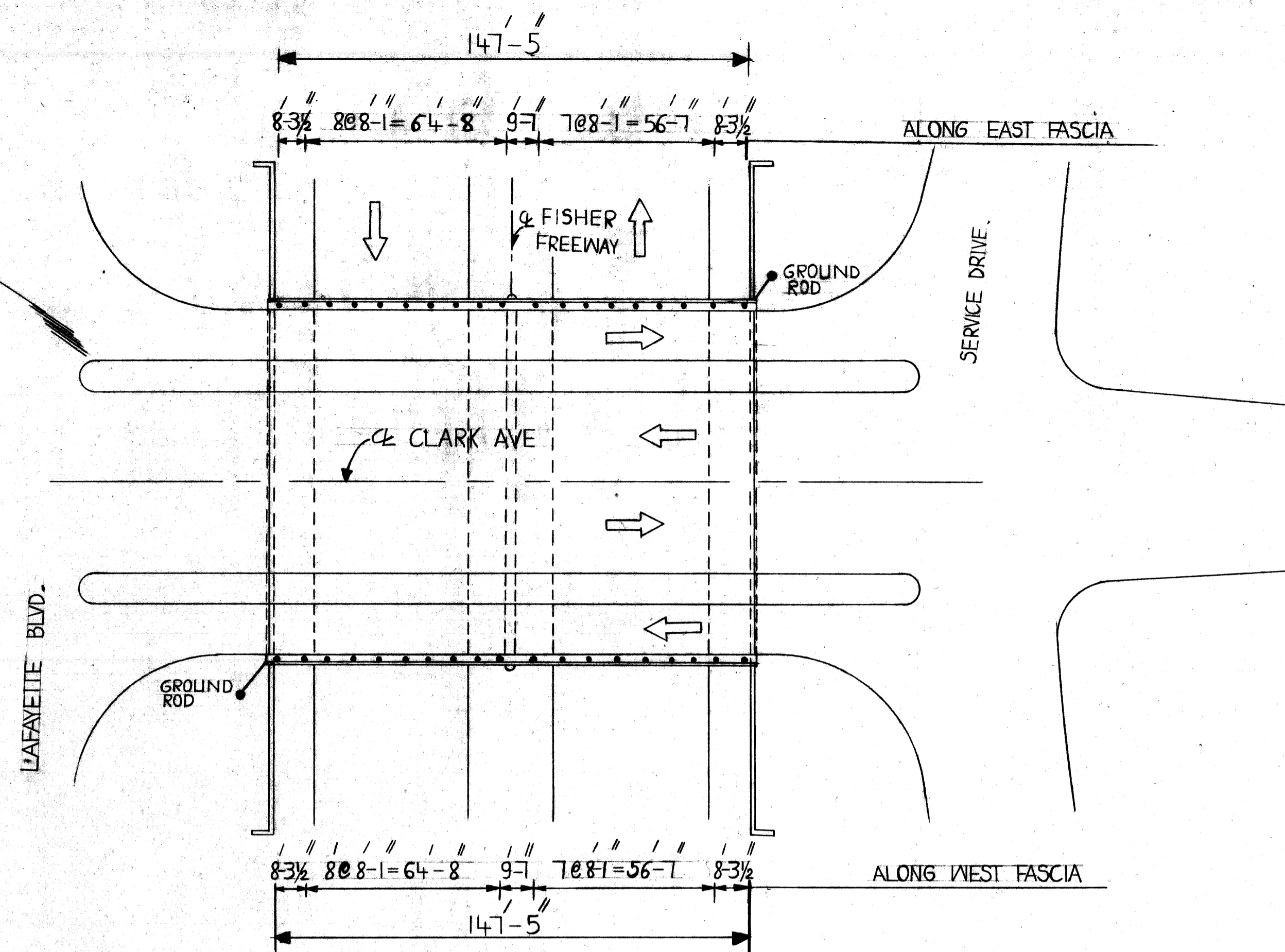
GROUNDING DETAIL



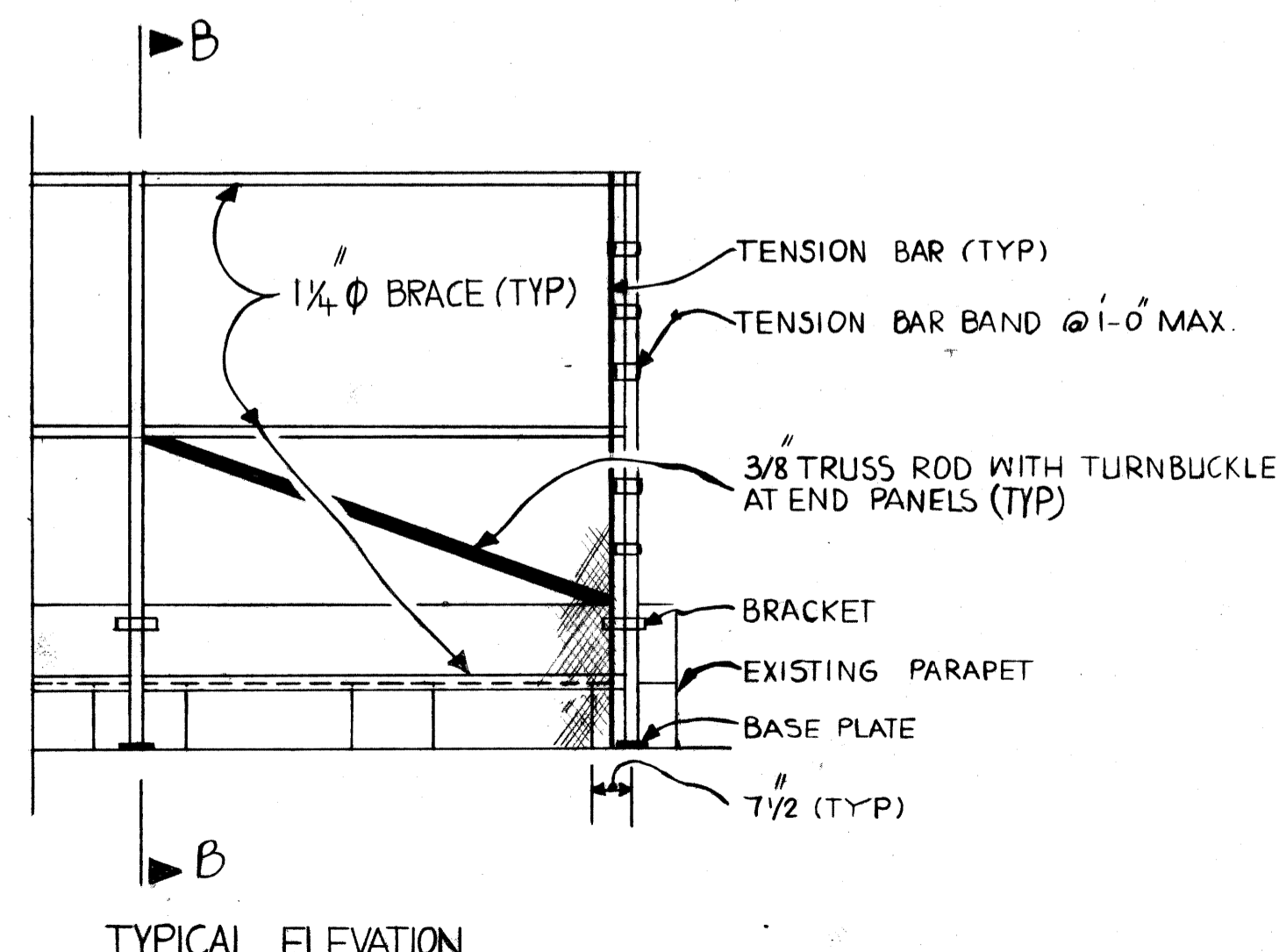
BRACKET DETAILS



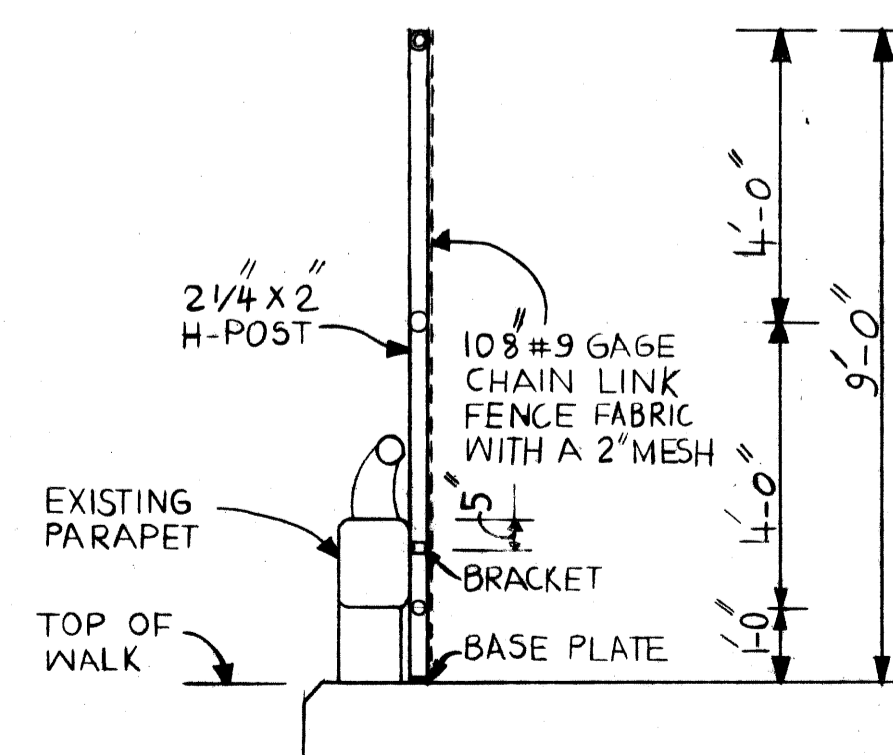
BASE PLATE DETAILS



PLAN



TYPICAL ELEVATION



SECTION B-B
ALONG EAST AND WEST FASCIA

| QUANTITIES | | |
|--------------------------------------|------|--------|
| ITEM | UNIT | AMOUNT |
| PEDESTRIAN FENCING, STRUCTURES - S12 | S.F. | 2654 |
| ELECTRICAL GROUNDING SYSTEM - S12 | L.S. | 1 |

PLANS PREPARED BY
CITY OF DETROIT
CITY ENGINEERS OFFICE

APPROVED _____
STRUCTURAL ENGINEER

JOB No. _____

MICHIGAN DEPARTMENT OF TRANSPORTATION
CLARK AVE. OVER I-75
PROTECTIVE SCREENING DETAILS

| REVISIONS | | | |
|-----------|-------------|------|----|
| NO. | DESCRIPTION | DATE | BY |
| | | | |
| | | | |

| | | |
|----------------|--------|------|
| DESIGN BOSS | W.A.R. | 3-83 |
| DRAWN BY | N.H. | 3-83 |
| TRACED BY | RAK | 3-83 |
| CHECKED BY | | |
| SHEET 10 OF 17 | | |

S12 OF 82194

