

FENCING NOTES

ALL WORK SHALL CONFORM TO MDOT STANDARD SPECIFICATIONS FOR CONSTRUCTION, 1979 EDITION

ALL FENCE FABRIC SHALL BE GALVANIZED #9 GAGE WITH A 2" MESH AND WITH KNUCKLING AT THE BOTTOM SELVAGE.

THE POSTS SHALL BE 2 1/4" X 2" GALVANIZED H-POSTS WEIGHING #1 PLF. ROUND POSTS HAVING A 2 1/4" OD WEIGHING 5-79 PLF, GALVANIZED, MAY BE USED WITH SIMILAR CONNECTION DETAILS.

THE NOMINAL 1 1/4" BRACES SHALL BE 1 3/8" OD. STEEL PIPE OR TUBING WEIGHING 2.27 PLF GALVANIZED

ALL POSTS AND TUBING SHALL BE FURNISHED WITH THE MANUFACTURERS STANDARD CONNECTIONS AND ITS MINIMUM WEIGHT SHALL BE WITHIN 5% OF THAT SPECIFIED.

POSTS AND TUBING SHALL BE BENT IN THE SHOP AS SHOWN ON THE PLANS.

ALL COMPONENTS ARE TO BE GALVANIZED. BOLTS, NUTS AND WASHERS ARE TO BE GALVANIZED IN ACCORDANCE WITH ASTM A 153.

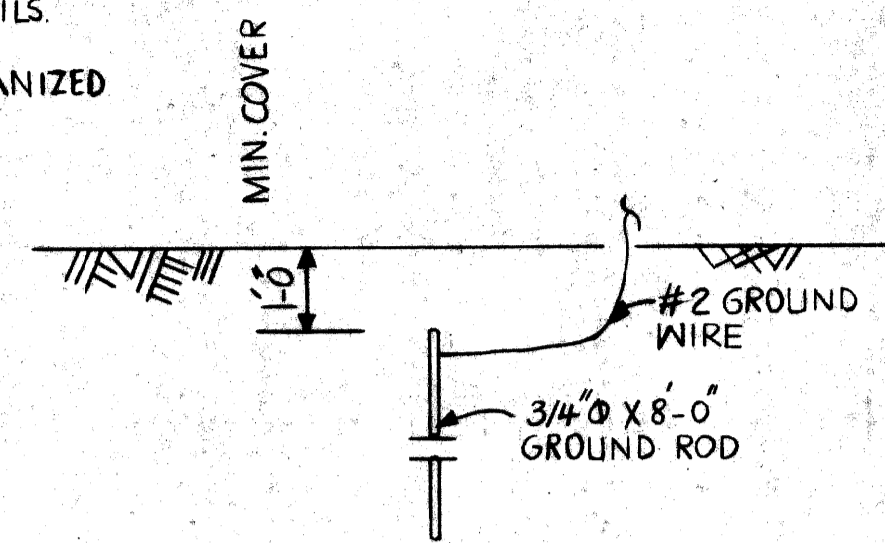
TENSION BARS SHALL BE 3/4" X 1 1/4" GALVANIZED STEEL.

CONTRACTOR SHALL VERIFY FIELD CONDITIONS BEFORE FABRICATION.

CARE IS TO BE TAKEN IN PLACING EXPANSION BOLTS AND BRACKETS SO AS TO INSURE THAT THE BRACKETS HOLD THE POSTS FIRMLY AGAINST CONCRETE. SHIM IF NECESSARY.

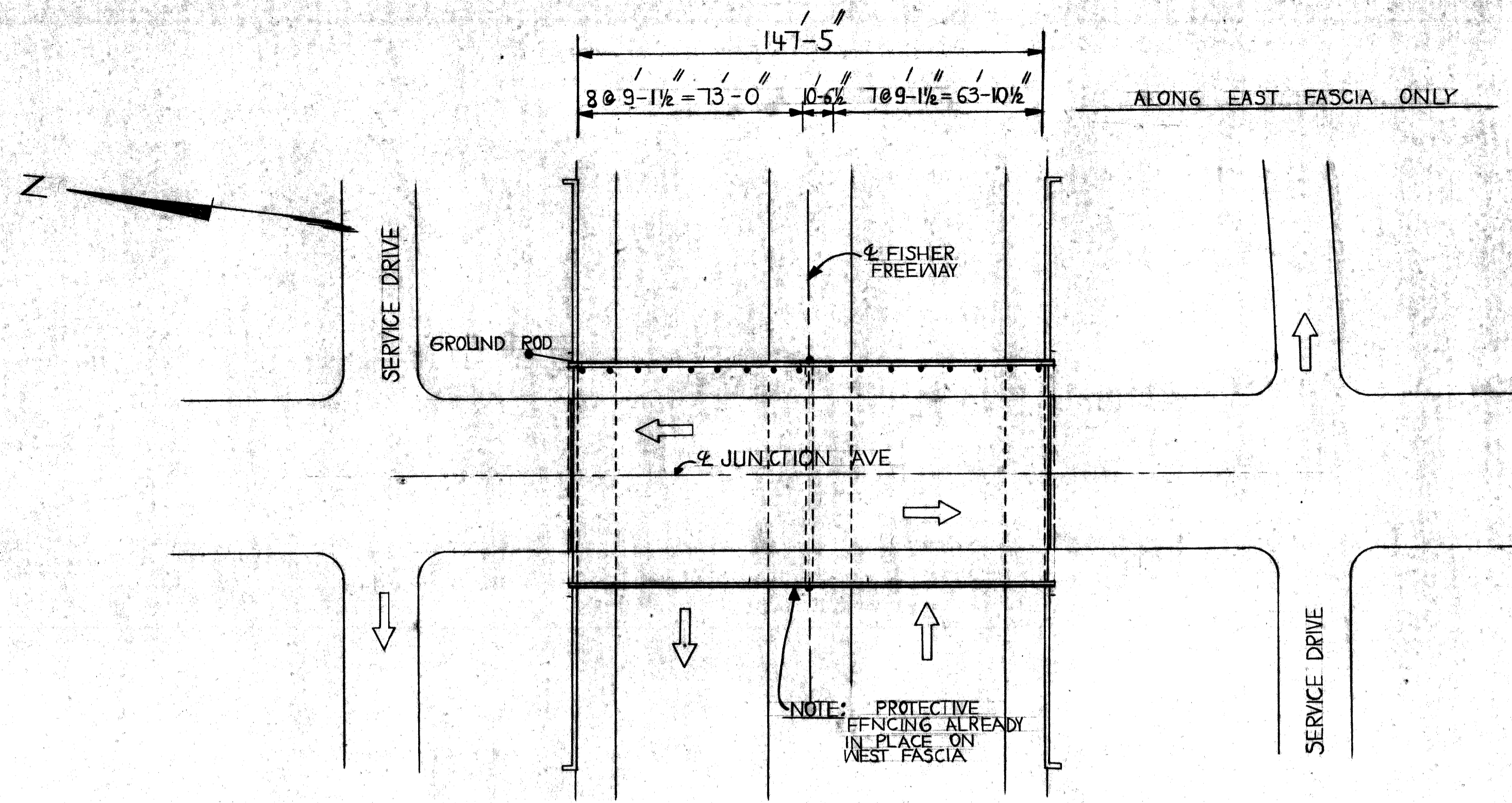
PEDESTRIAN FENCING STRUCTURES SHALL INCLUDE THE FABRIC, POSTS, BRACES, EXPANSION BOLTS, BRACKETS AND ALL SUITABLE CONNECTIONS AND FITTINGS.

1/2" EXPANSION BOLTS SHALL BE PHILLIPS RED HEAD GALVANIZED WEDGE ANCHORS W/5 1/2" X 6" OR APPROVED EQUAL.

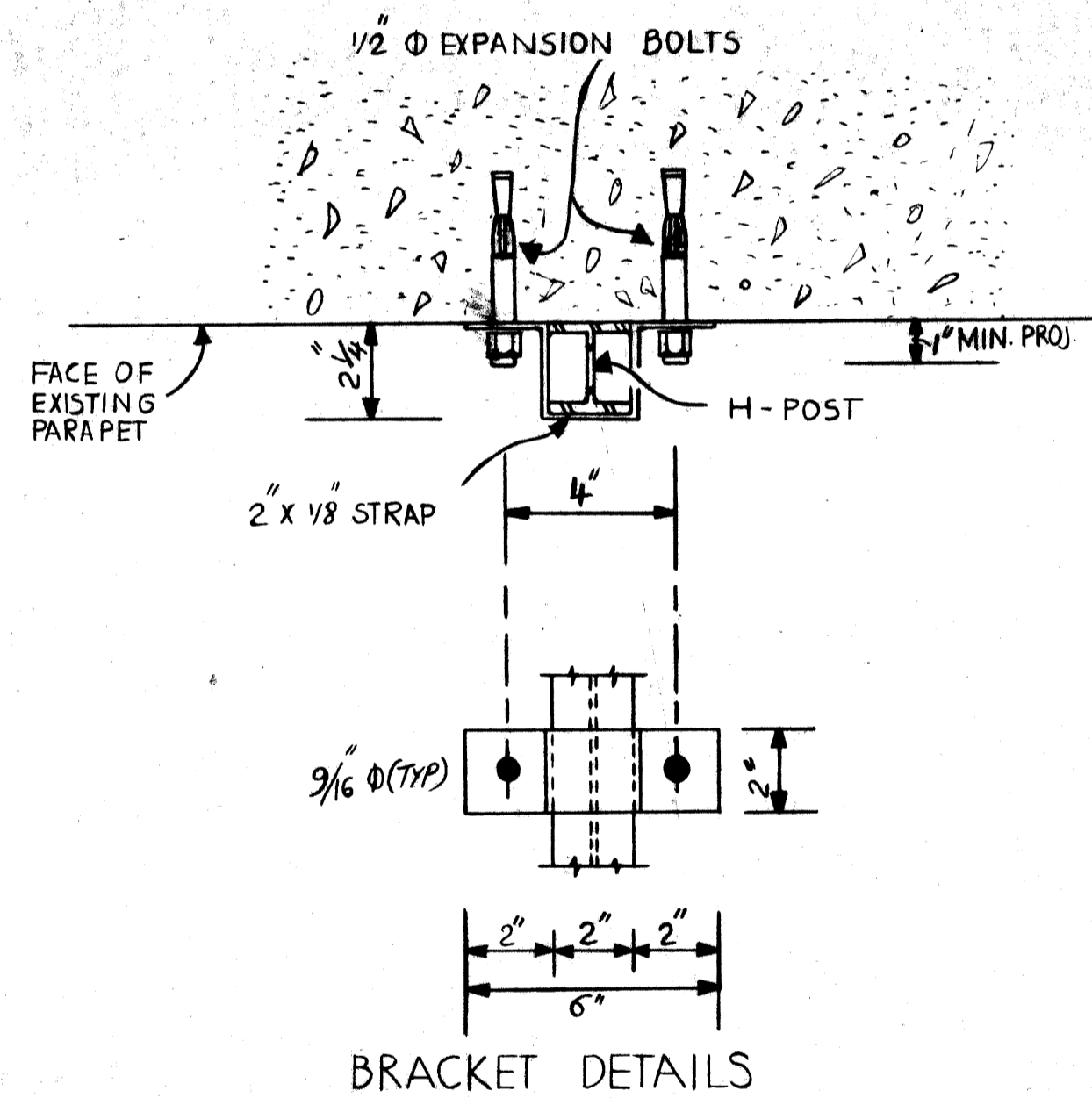


1. ALL UNDERGROUND CONNECTIONS SHALL BE CALDWELDED THERMITE WELD, GAS OR ARC WELD.
2. EXPOSED CONNECTIONS MAY BE SPLIT BOLT OR CLAMP TYPE.
3. GROUND WIRE SHALL BE #2 AWG STRANDED SOFT DRAWN COPPER WIRE.

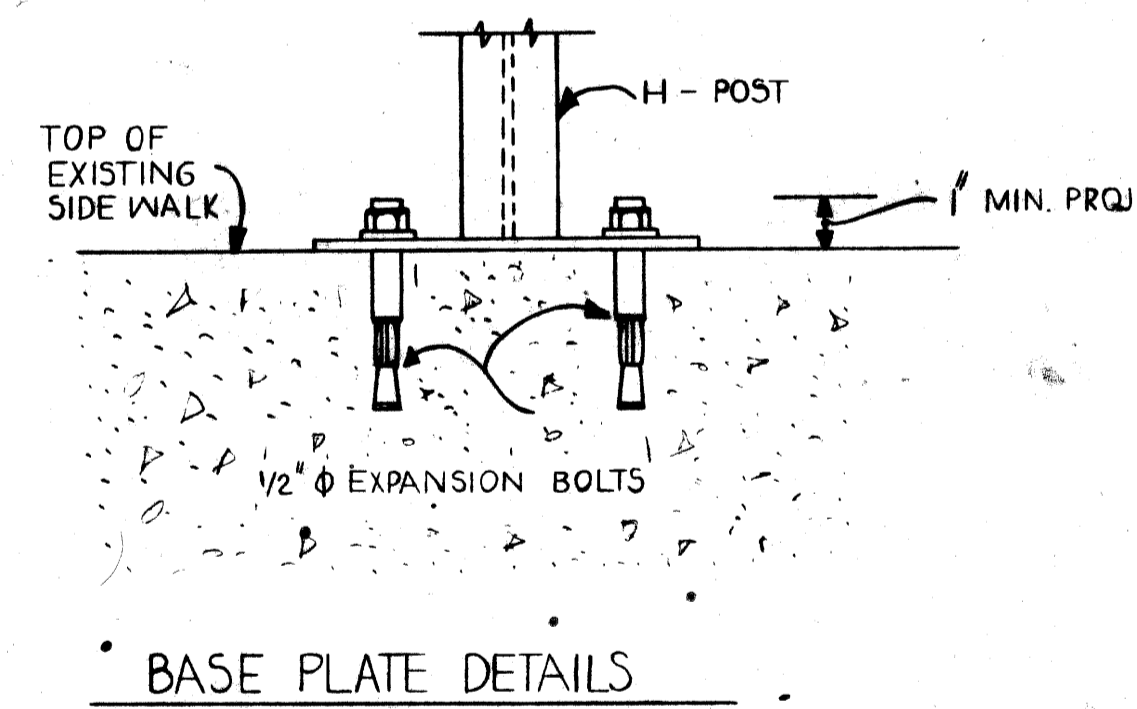
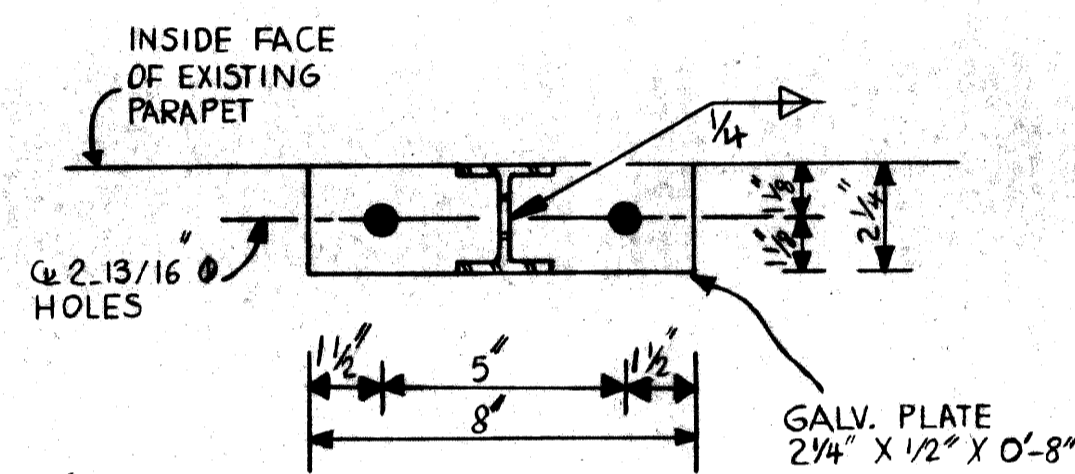
GROUNDING DETAIL



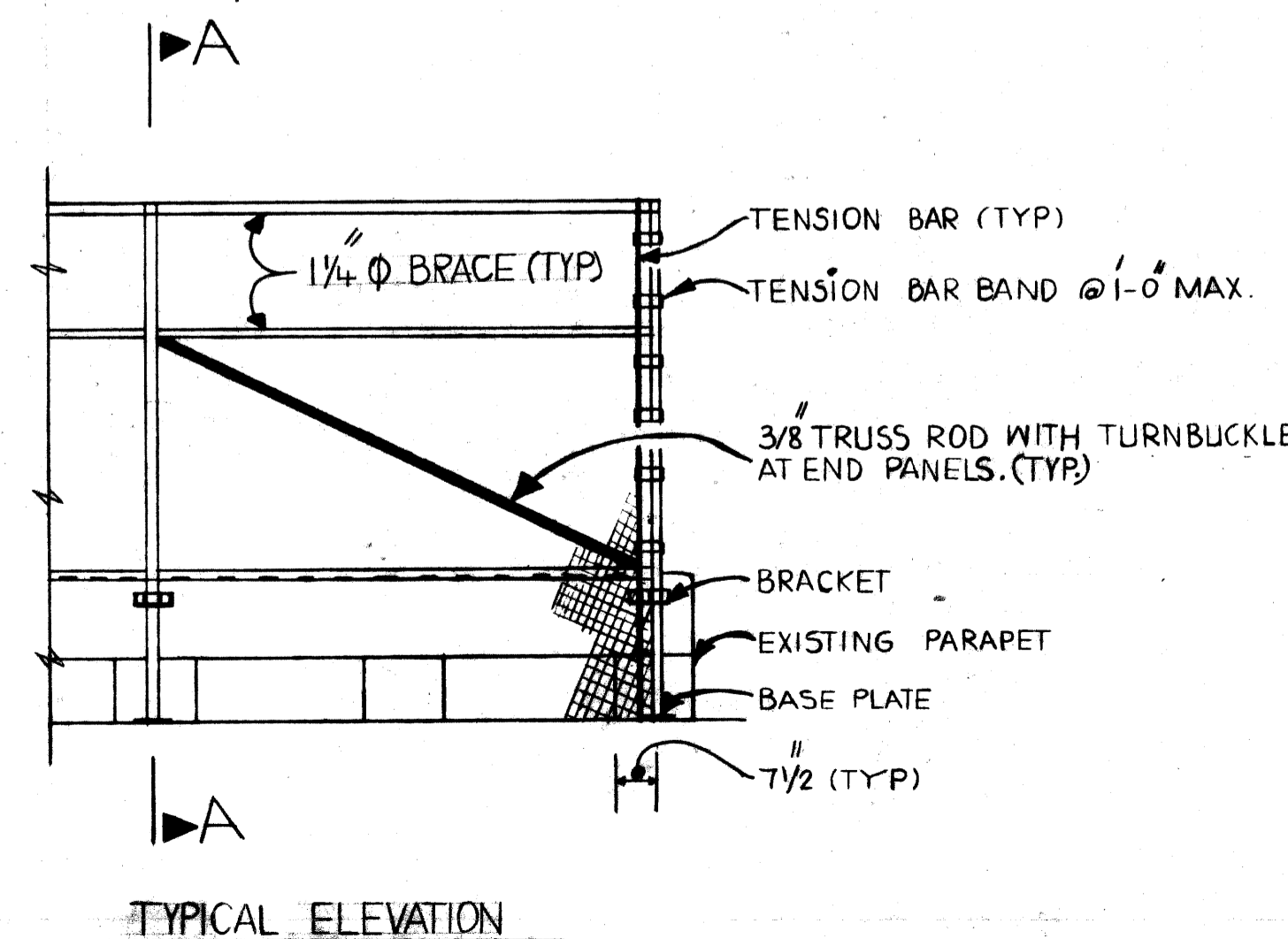
PLAN



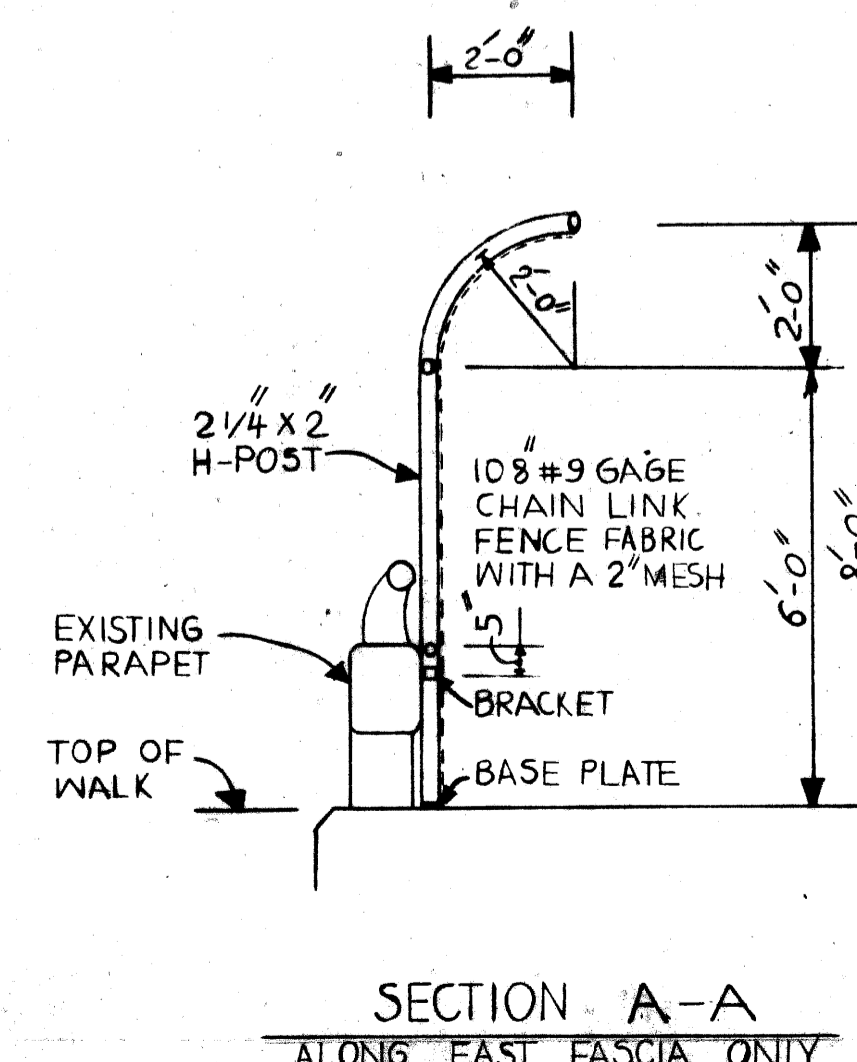
BRACKET DETAILS



BASE PLATE DETAILS



TYPICAL ELEVATION



SECTION A-A
ALONG EAST FASCIA ONLY

QUANTITIES		
ITEM	UNIT	AMOUNT
PEDESTRIAN FENCING, STRUCTURES, S-II	S.F.	1327
ELECTRICAL GROUNDING SYSTEM, S-II	LS.	1

PLANS PREPARED BY
CITY OF DETROIT
CITY ENGINEERS OFFICE

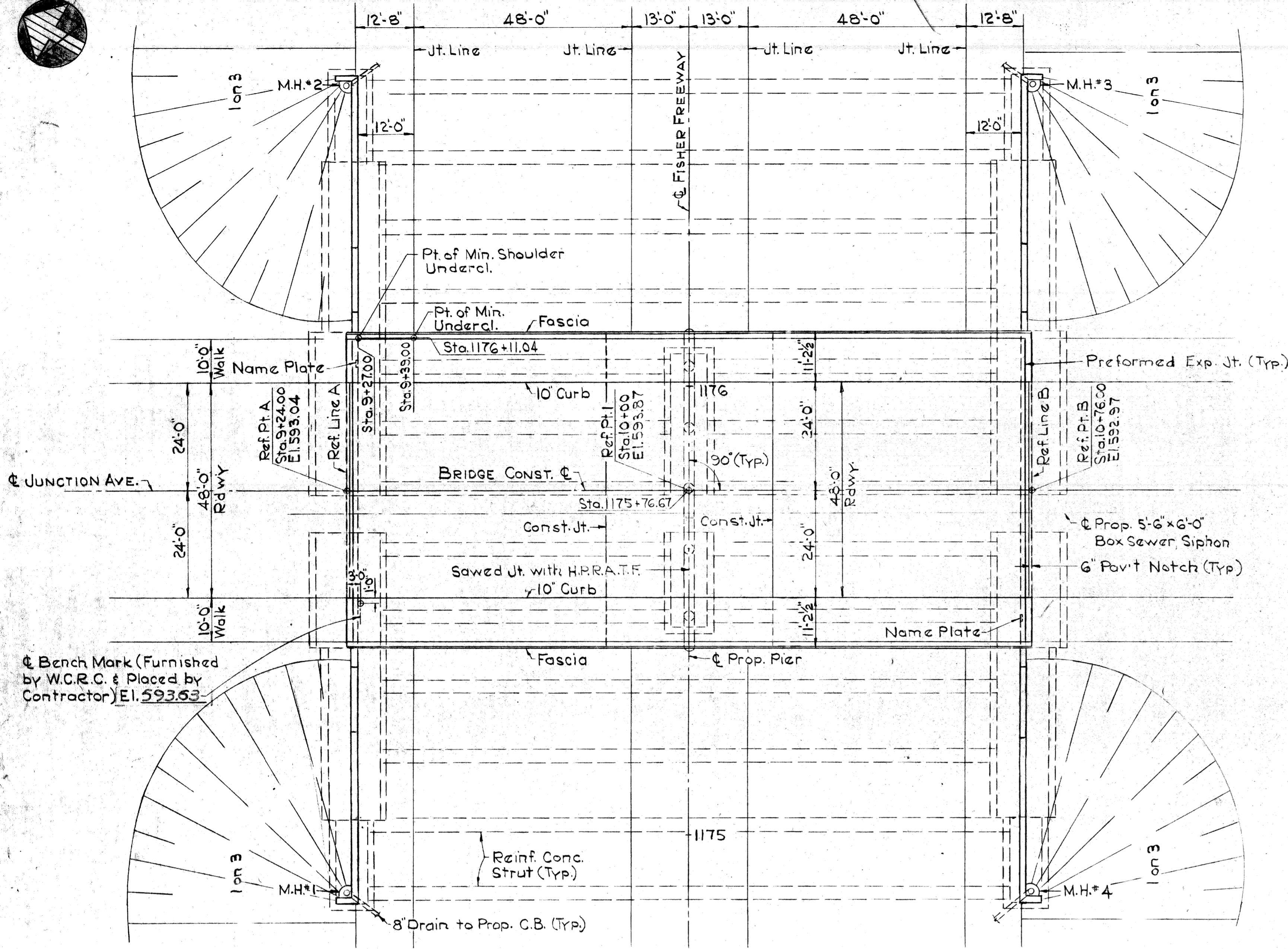
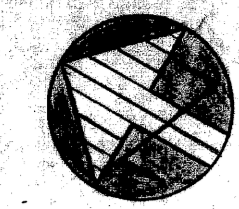
APPROVED _____
STRUCTURAL ENGINEER

JOB No. _____

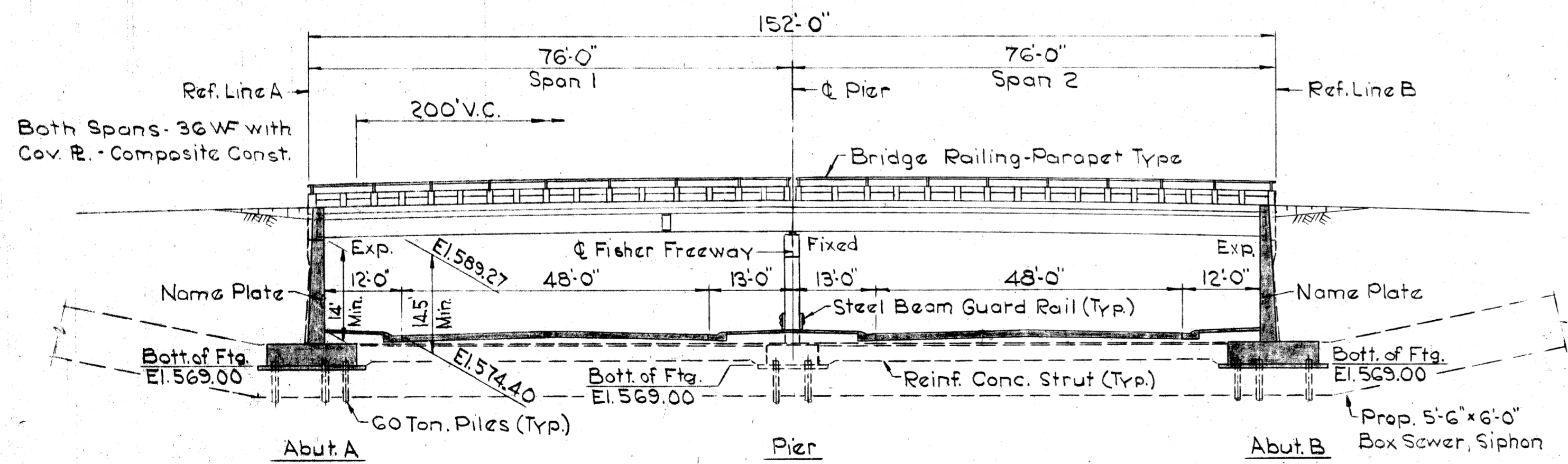
MICHIGAN DEPARTMENT OF TRANSPORTATION
JUNCTION AVE OVER I-75
PROTECTIVE SCREENING DETAILS

REVISIONS			
NO.	DESCRIPTION	DATE	BY

QUAD BOSS: KAGLER 3-83
DRAWN BY: N.H. 3-83
CHECKED BY: [Signature] 3-83
SHEET 2 OF 17
S11 OF 82194

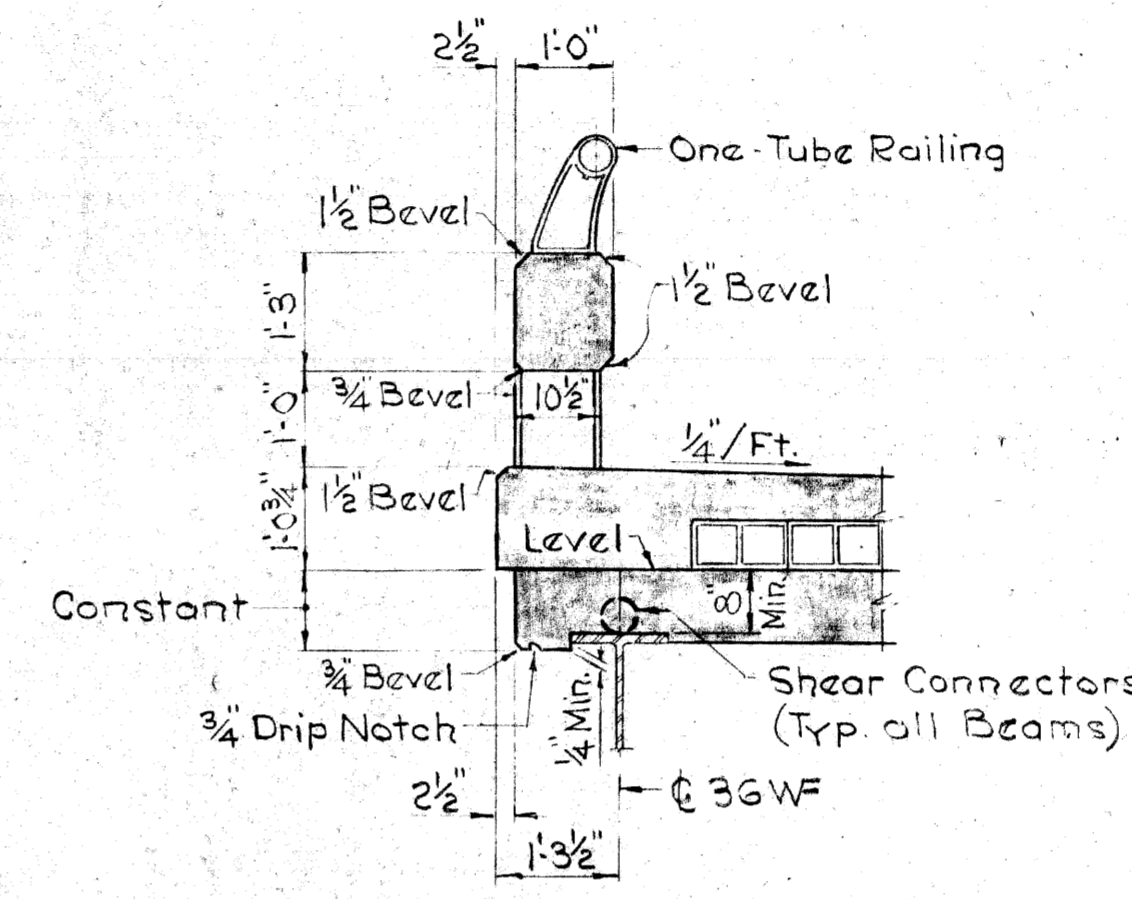
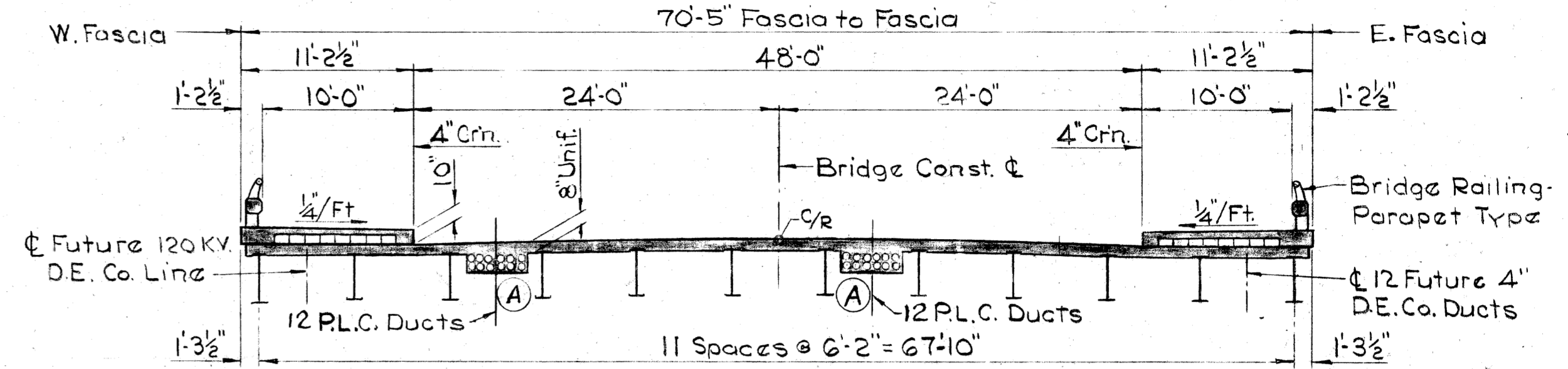


☉ Bench Mark (Furnished by W.C.R.C. & Placed by Contractor) El. 593.53



REVISIONS	
①	Changed P.C. Ducts from 9 to 12
	R.C. 10-18-65 J.F.W.H.

© M.S.H.D. Review Revisions R.W.D. 5-5-65 ✓RJC



MISC. STRUCTURE QUANTITIES	
Item	Amount
Porous Material Grade A (Comp. in Place)	2800 Cu.Yds.

GENERAL NOTES

The design of this structure is based on the M.S.H.D. Standard Specifications for the Design of Highway Bridges - 1958 edition - (HS-10-14 and alternate military loading). Live load plus impact deflection not more than 1/1000 of span length or 1/350 of cantilever arm.
Top of roadway slab and tops of curbs are parallel to the vertical curve and tangent.
All piles have a minimum capacity of 60 Tons.

COPY
EXISTING BRIDGE DETAILS
(NOT FOR CONSTRUCTION)

Work this Sheet with Sh.# 210

SQUAD LEADER	DATE
<i>P. Cummins</i>	6-10-64
<i>R.W. Dilworth</i>	6-18-64
<i>McCurry</i>	
<i>M. Joynst</i>	

PLANS PREPARED BY THE BOARD OF
WAYNE COUNTY ROAD COMMISSIONERS
PHILIP J. NEUDECK WILLIAM E. KREGER AL BARBOUR
APPROVED: *[Signature]* APPROVED: *[Signature]*
ENGINEER OF DESIGN, STRUCTURES AND EXPRESSWAYS ENGINEER OF STRUCTURES AND EXPRESSWAYS COUNTY HIGHWAY ENGINEER

MICHIGAN STATE HIGHWAY DEPARTMENT
APPROVED: SHEET 9 OF 17
DESIGN SUPERVISING ENGINEER ENGINEER OF DESIGN/CONSULTANTS

1-75 FISHER FREEWAY
UNDER JUNCTION AVE.
GENERAL PLAN OF STRUCTURE

ISSUE NO.	DATE
3	10-20-65
COUNTY JOB	SHEET NO.
1322	209
STATE PROJECT	
S11 of 82194J	