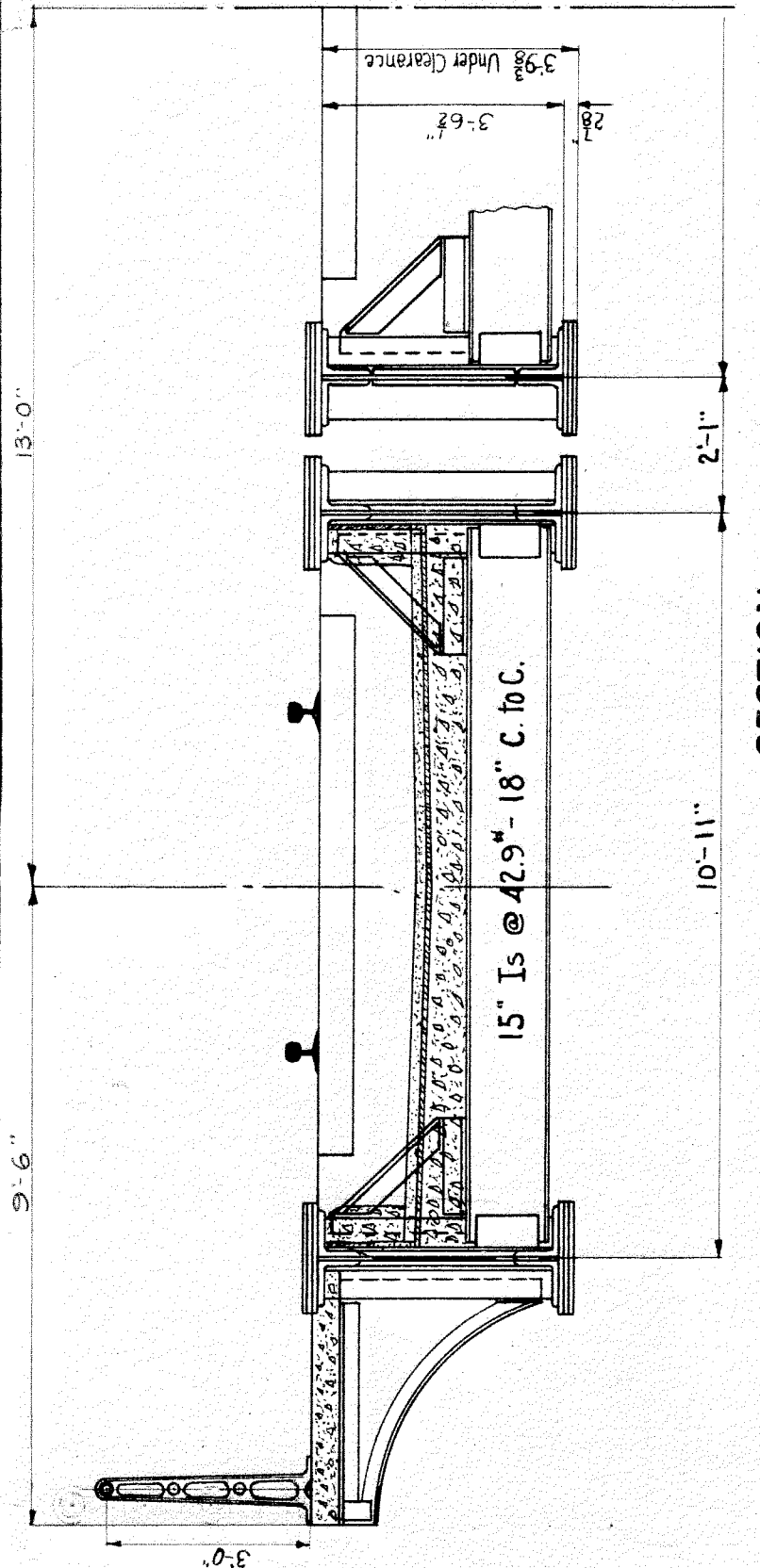
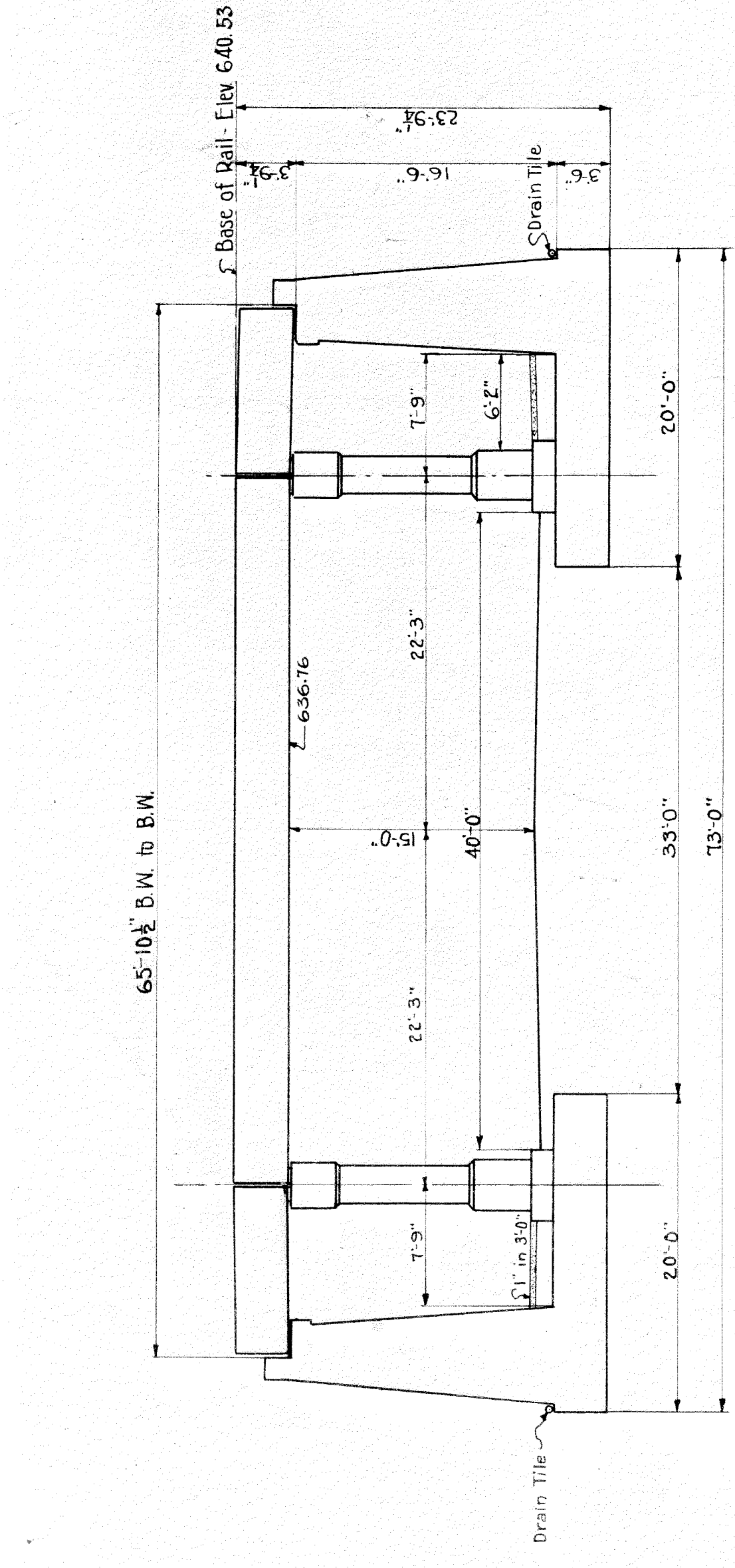


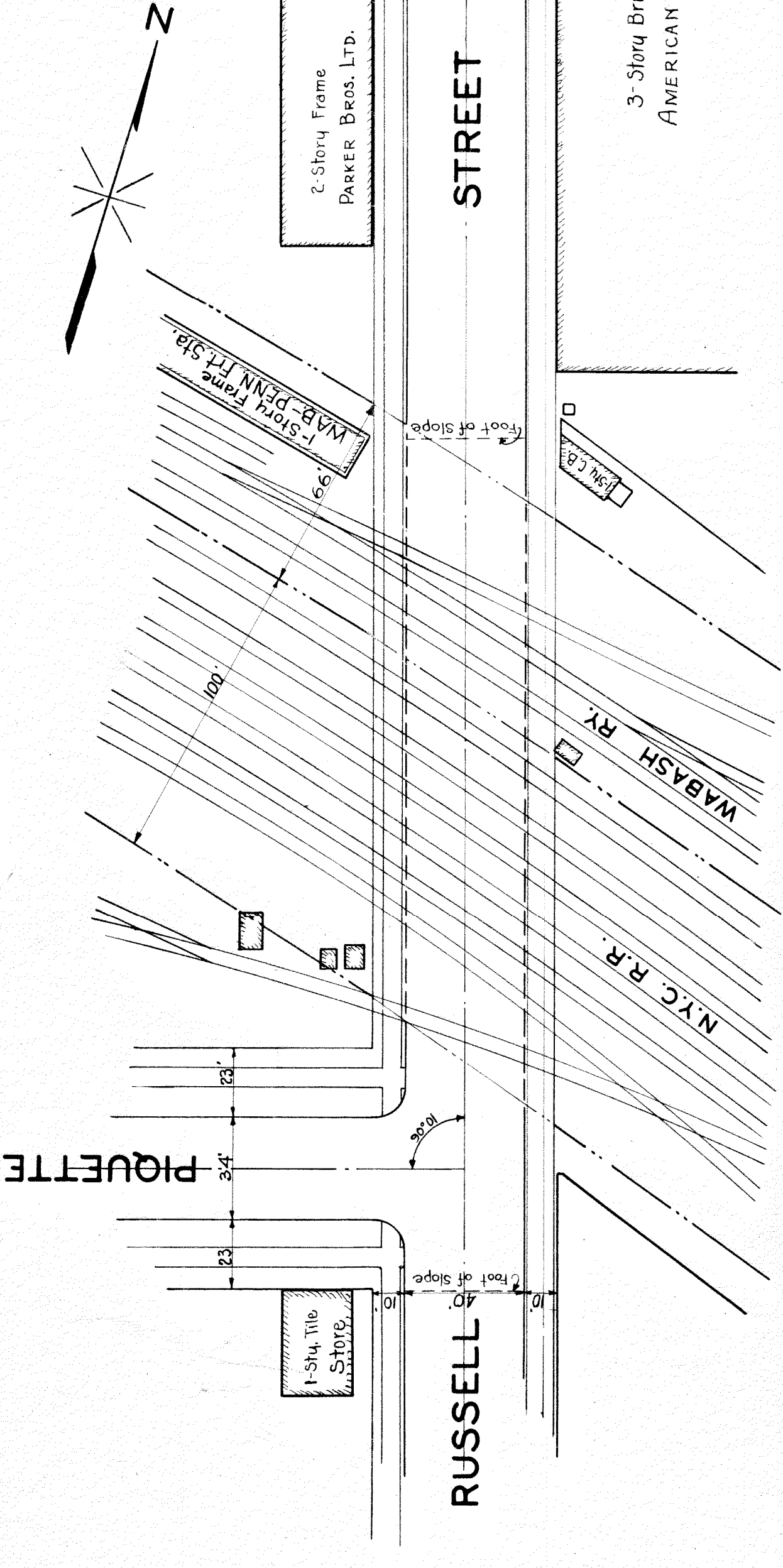
LOCATION PLAN



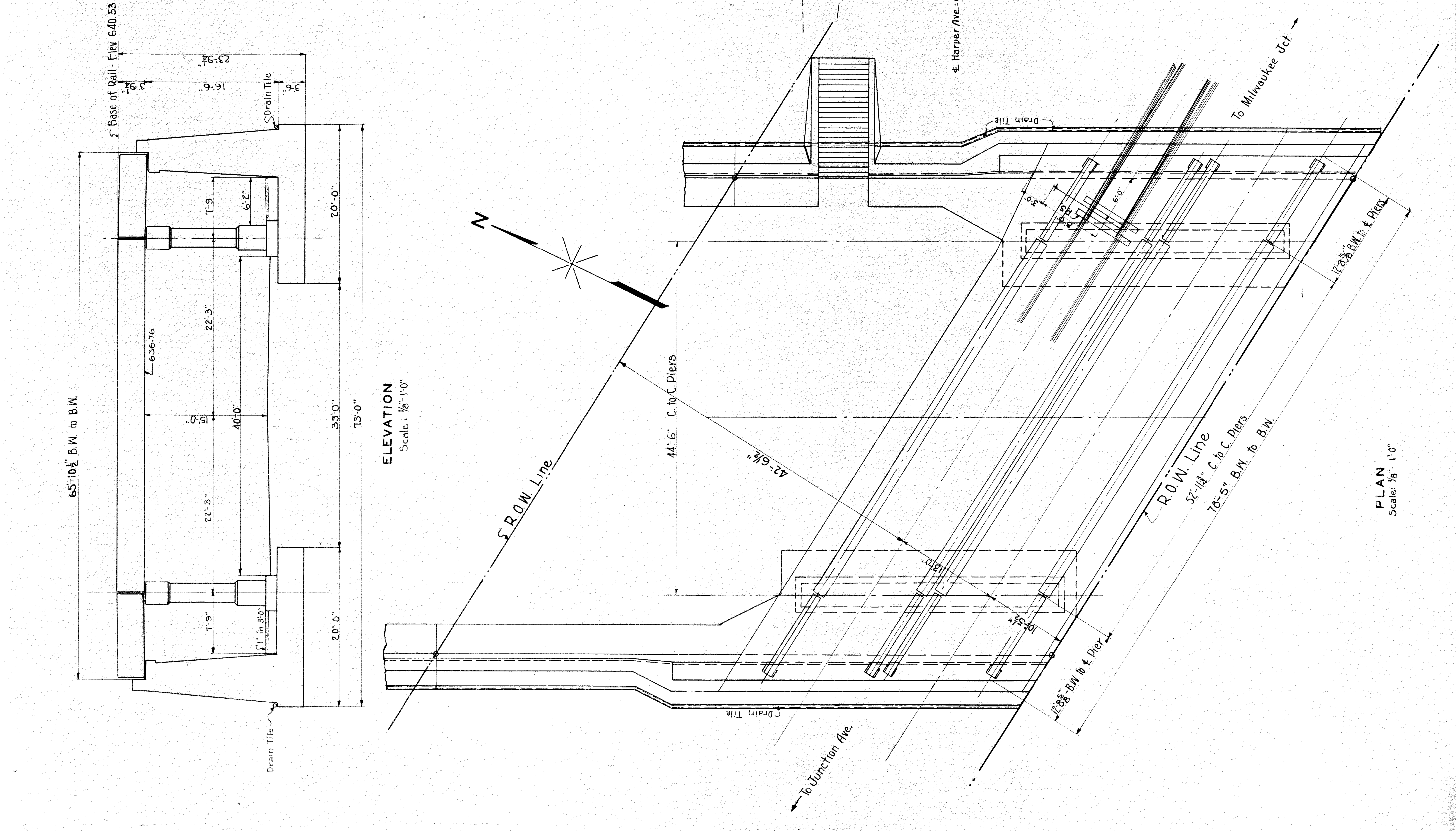
SECTION
Scale: 3/8" = 1'-0"



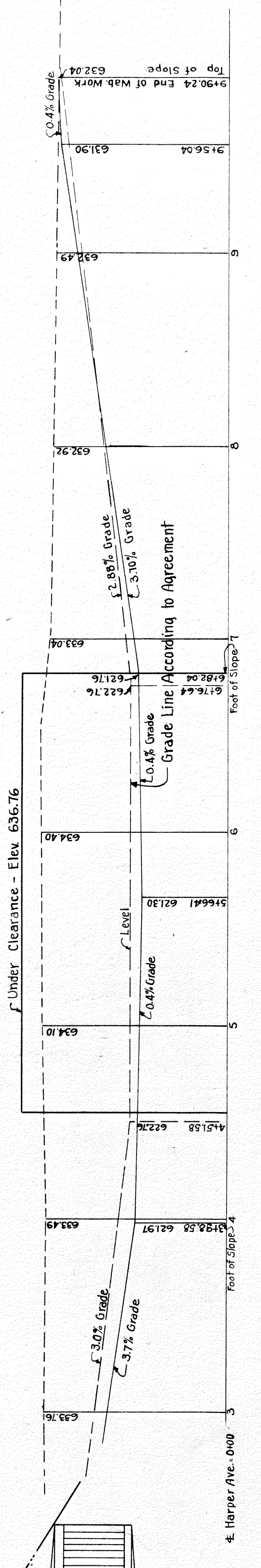
ELEVATION
Scale: 1/8" = 1'-0"



PIQUETTE



SITUATION PLAN
Scale: 1" = 40'



PROFILE ON RUSSELL ST.
Scale: Hor. 1" = 40' Ver. 1" = 10'

Description	Sheet No.
GENERAL PLAN	1
STEEL DESIGN	2
"	3
PIER DETAILS	4
WEST ABUTMENT	5
EAST	6
SOLID FLOOR PLAN	7
TEMPORARY PILESTES	8
GEN. PLAN - RET. WALLS	9
WEST RETAINING WALL	10
EAST	11

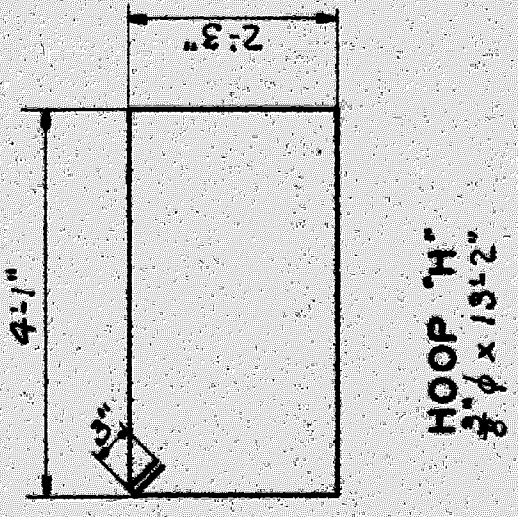
WABASH RAILWAY
DETROIT TERMINAL DIVISION
GENERAL PLAN
RUSSELL STREET
DETROIT, MICHIGAN

OFFICE OF THE CHIEF ENGINEER
SCALE: SHOWN April 10, 1928
Rev. 5-7-28

SHEET 1 OF 11

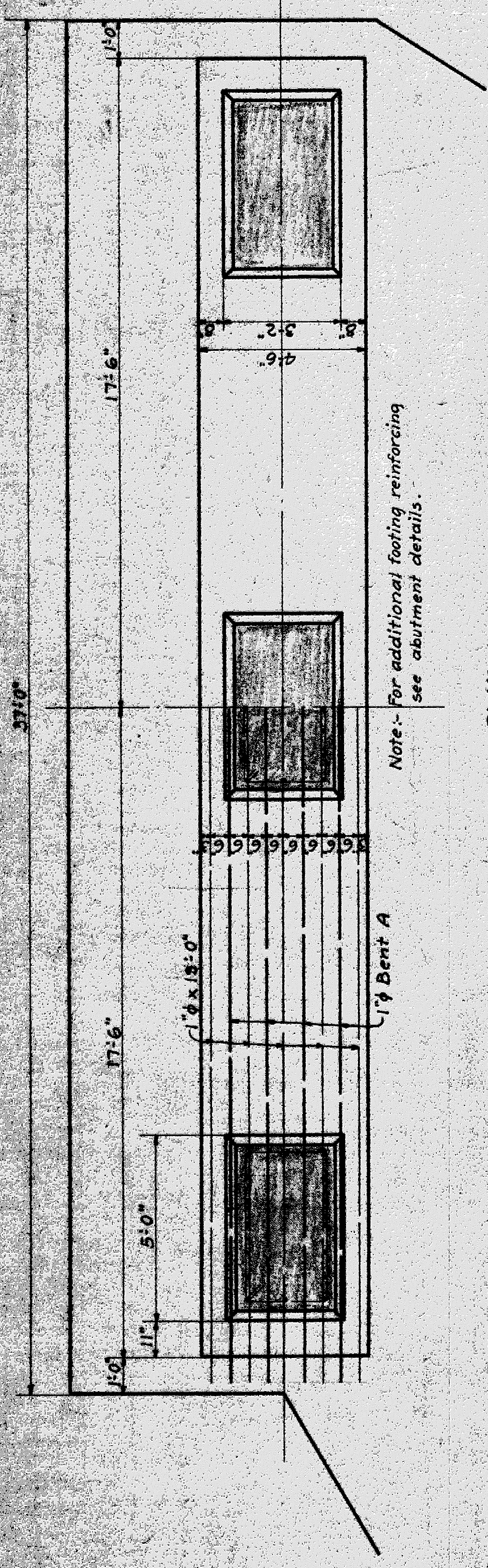
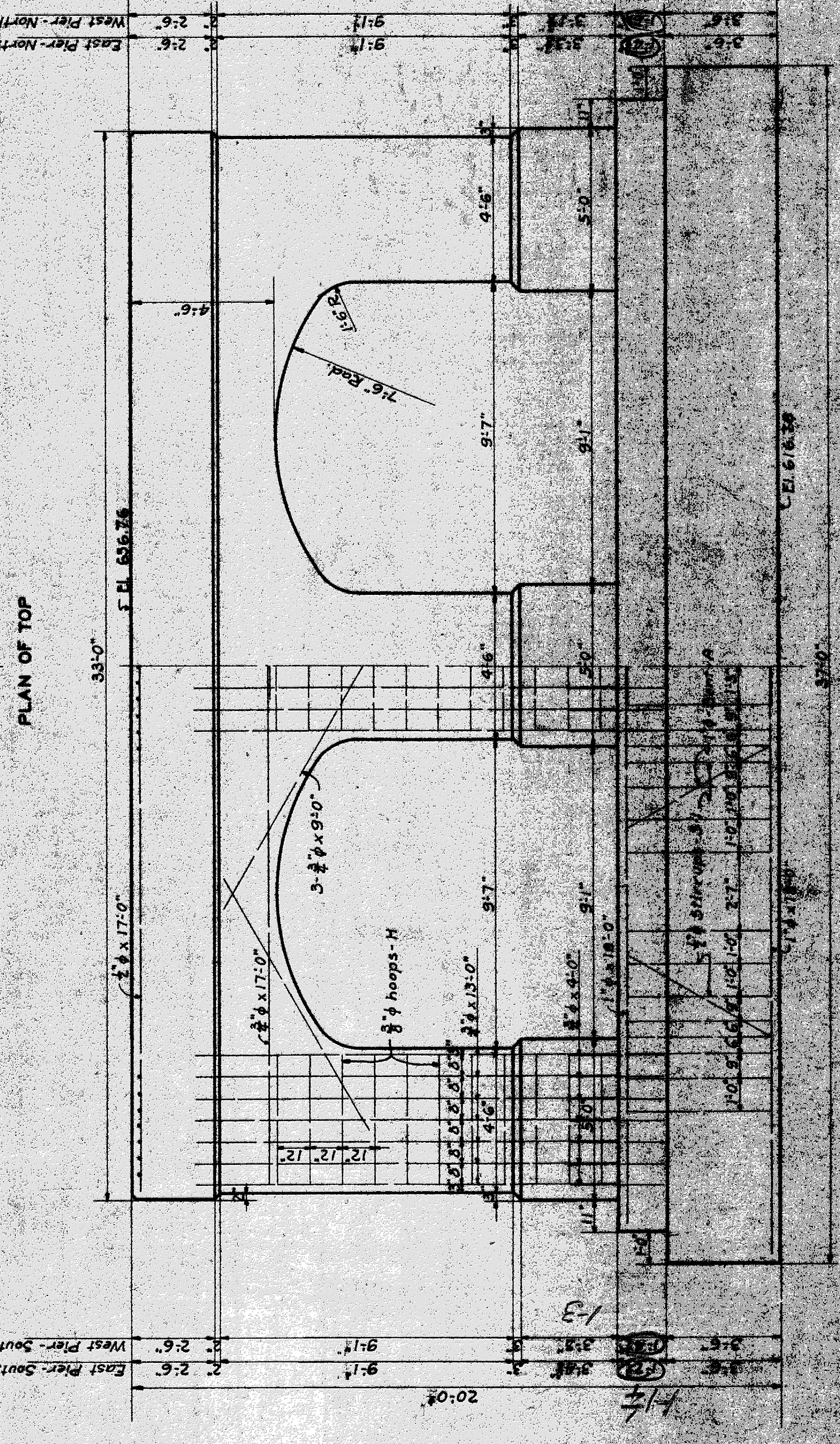
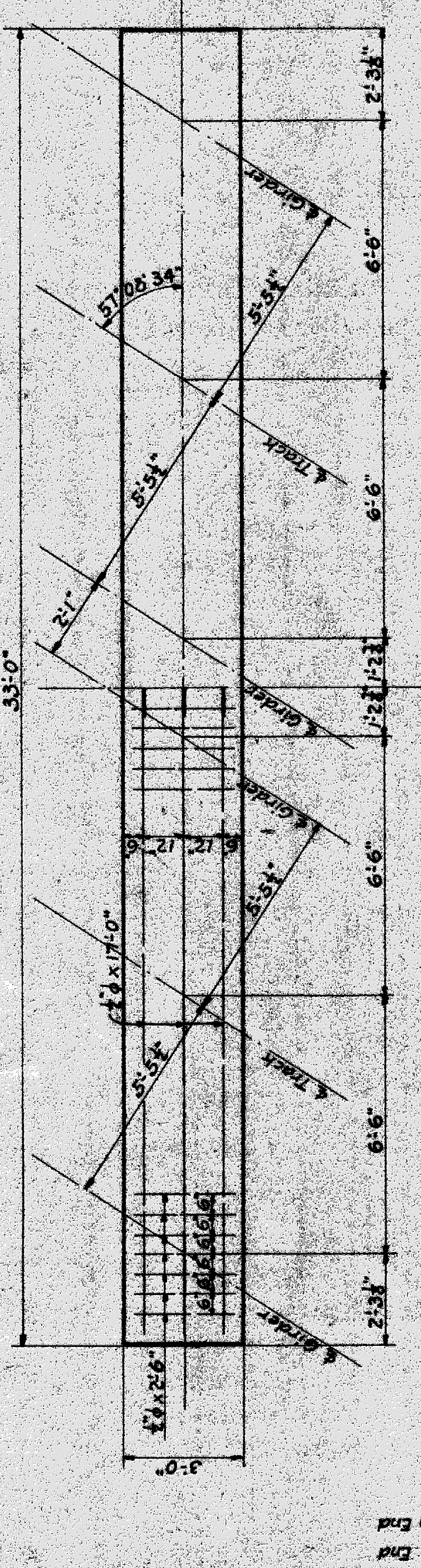
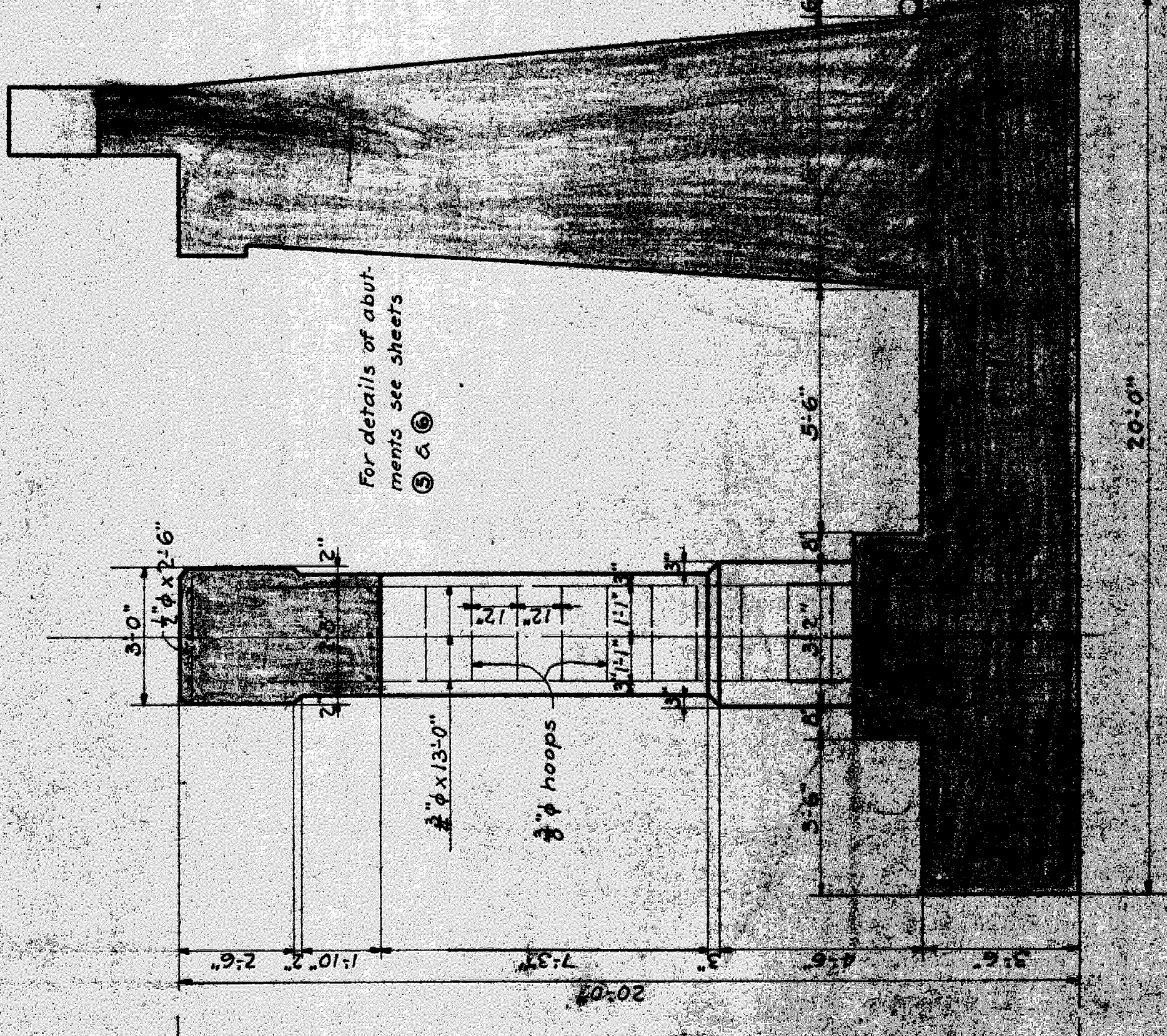
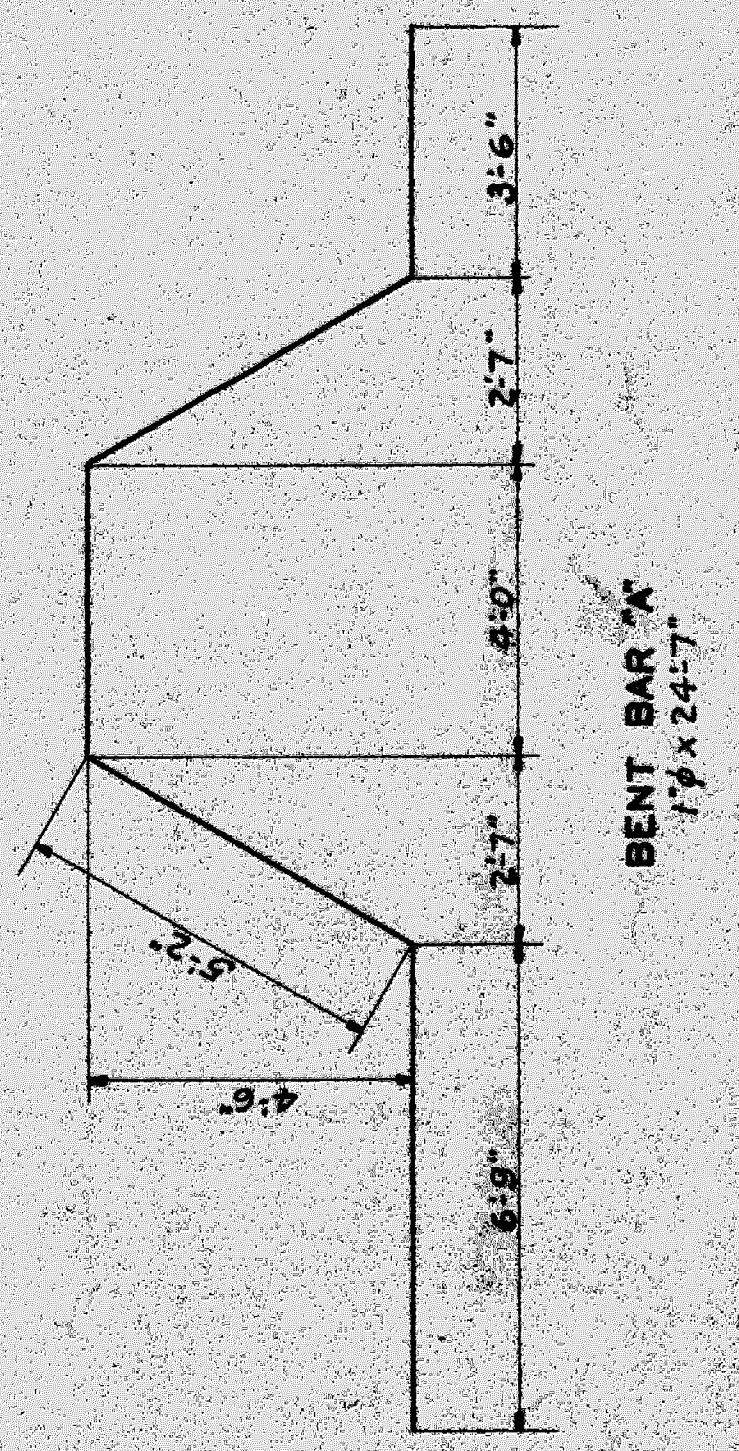
DRAWN BY S.M.S. CHECKED BY F.L.M. (A.H.S.)

PLAN
Scale: 1/8" = 1'-0"



CORRUGATED STEEL BARS		
No.	Size	Location
	Length Ft.	In.
25	1/2"	6" Top
6	1/2"	17" 12"
6	3/4"	17" 0" 12"
12	3/4"	9" 0" 12"
48	3/4"	13" 0" 8" Column
48	3/4"	4" 0" 8" "
33	3/4"	13" 2" 12" Hoops
20	1"	19" 0" 12" Footing
8	1"	24" 7" 12" " - Bent A
120	1/2"	11" 3" Var. Stirrups

TABLE OF QUANTITIES			
ITEM	UNIT	EST.	ACTUAL
Excavation	C.Y.		
Forming Concrete	"		
Pier	"		
Rein Steel	Lbs.		



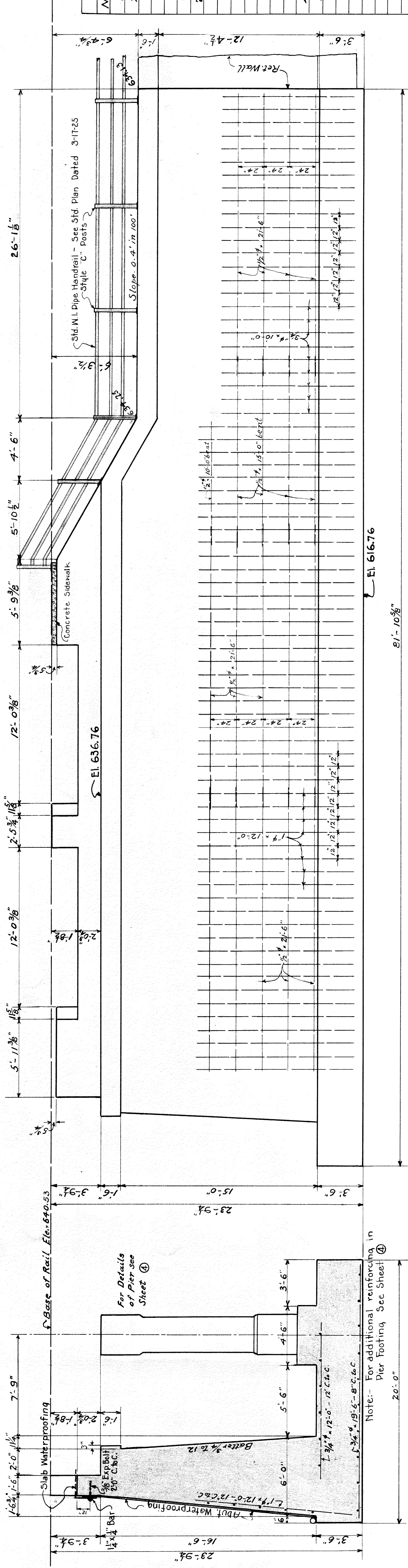
Note - For additional footing reinforcing see abutment details.

WABASH RAILWAY
 DETROIT TERMINAL DIVISION
PIER DETAILS
 RUSSELL STREET
 DETROIT, MICHIGAN

OFFICE OF THE CHIEF ENGINEER
 SCALE: 3/8" = 1'-0"
 April 10, 1928
 Rev. 5-8-25

SHEET 10F 11

FILED 105-10



SECTION.

PLAN.

Note: For additional reinforcing in Pier Footing See Sheet ④

TABLE OF RODS.

NO.	SIZE	LENGTH	C. to C.	REMARKS.
50	1"	12'-0"	12"	Rear of Abut. Str.
25	3/4"	10'-0"	12"	" " " "
14	1/2"	21'-6"	24"	" " " "
4	1/2"	15'-0"	24"	" " " bent
1	1/2"	10'-0"	"	" " " "
28	3/4"	12'-0"	8"	Top of Footing Str.
8	3/4"	12'-0"	4'-8 1/2"	" " " "
8	1/2"	19'-0"	24"	" " " "
1	1/2"	18'-0"	"	" " " "
1	1/2"	17'-0"	24"	" " " "
1	1/2"	16'-0"	"	" " " "
1	1/2"	14'-6"	"	" " " "
40	3/4"	19'-6"	8"	Bottom Footing Str.
12	3/4"	19'-6"	3'-8 1/2"	" " " "
2	3/4"	16'-0"	8"	" " " "
2	3/4"	13'-0"	8"	" " " "
3	3/4"	12'-0"	8"	" " " "
2	3/4"	11'-0"	8"	" " " "
2	3/4"	10'-6"	8"	" " " "
15	3/4"	9'-6"	8"	" " " "
2	3/4"	8'-9"	8"	" " " "
2	3/4"	8'-0"	8"	" " " "
39	3/4"	7'-6"	8"	" " " "
22	1/2"	21'-0"	24"	" " " "
1	1/2"	19'-6"	24"	" " " "
2	1/2"	18'-6"	24"	" " " "
3	1/2"	17'-0"	24"	" " " "
1	1/2"	8'-6"	24"	" " " "

TABLE OF QUANTITIES

ITEM	UNIT	EST.	ACTUAL
Excavation	C.Y.		
Footings	C.Y.		
Concrete	C.Y.		
Abutment	C.Y.		
Waterproofing	Sqs.		
Rein. Steel	Lbs.		
1/4" x 1/2" Bar-Var. Lengths	L.F.		

WABASH RAILWAY
 DETROIT TERMINAL DIVISION
WEST ABUTMENT
RUSSELL STREET
 DETROIT, MICHIGAN
 OFFICE OF THE CHIEF ENGINEER
 SCALE: 1/4" = 1'-0"
 April 9, 1928
 Rev. 5-8-28.
SHEET 50F 11

PLAN NO. _____
 CASE NO. _____
 DRAWN BY: A.H.S. CHECKED BY: A.H.S.

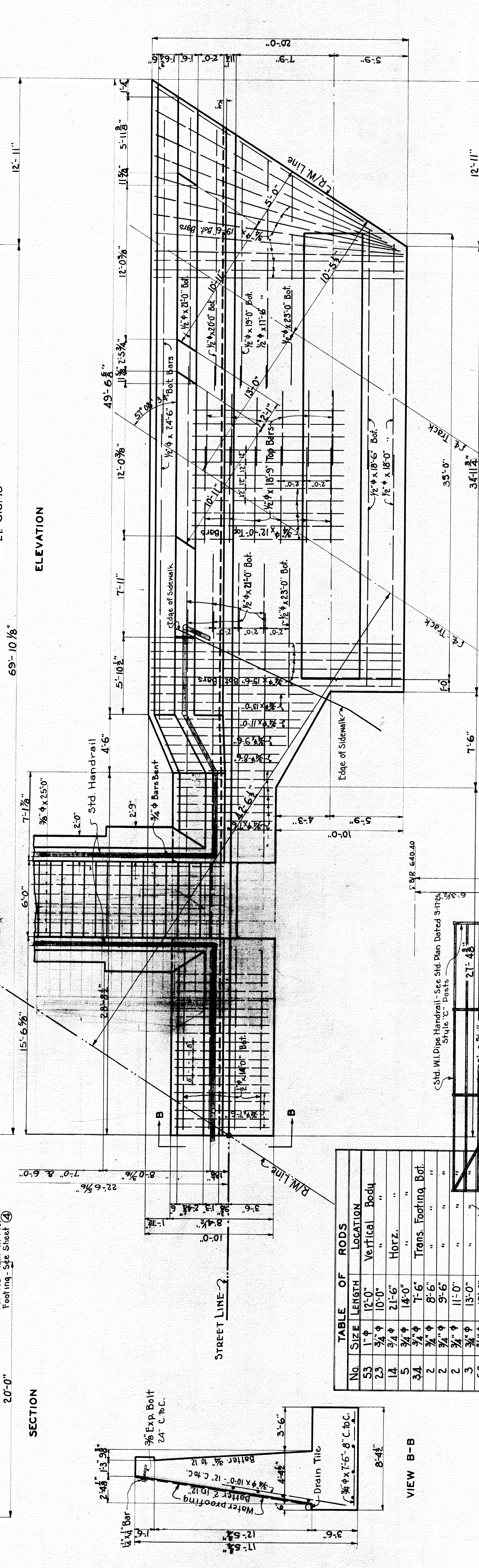
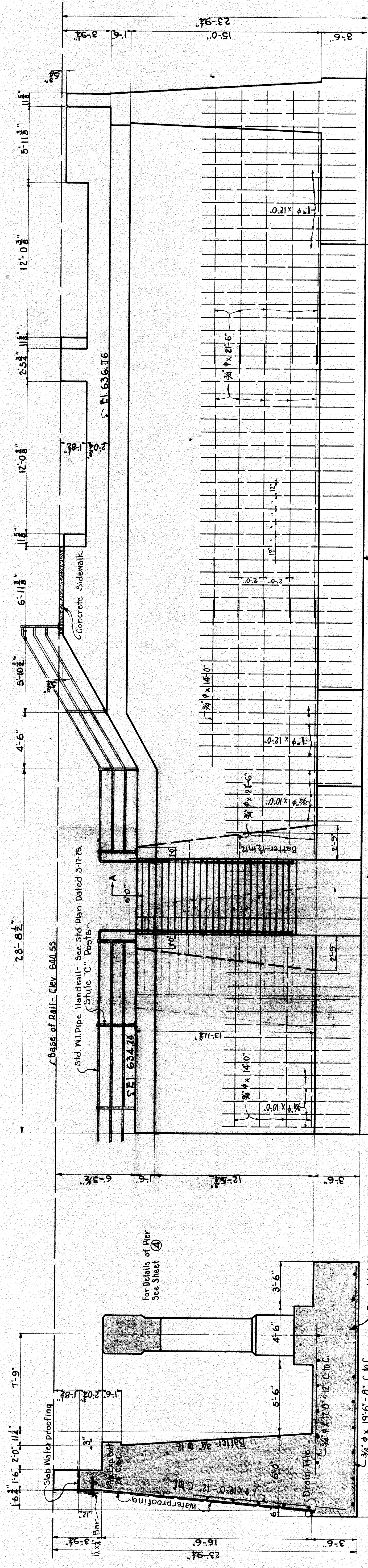
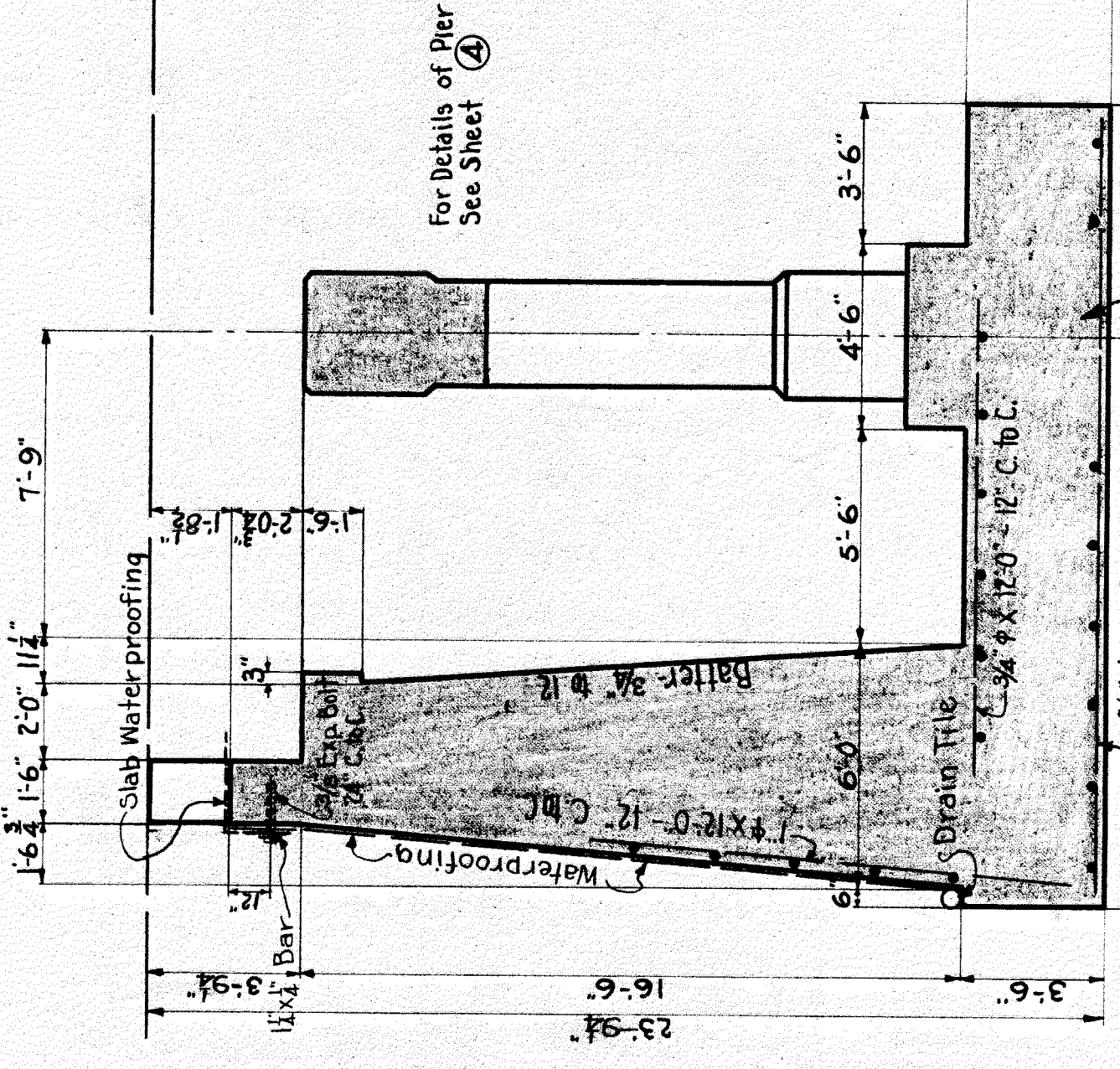


TABLE OF QUANTITIES

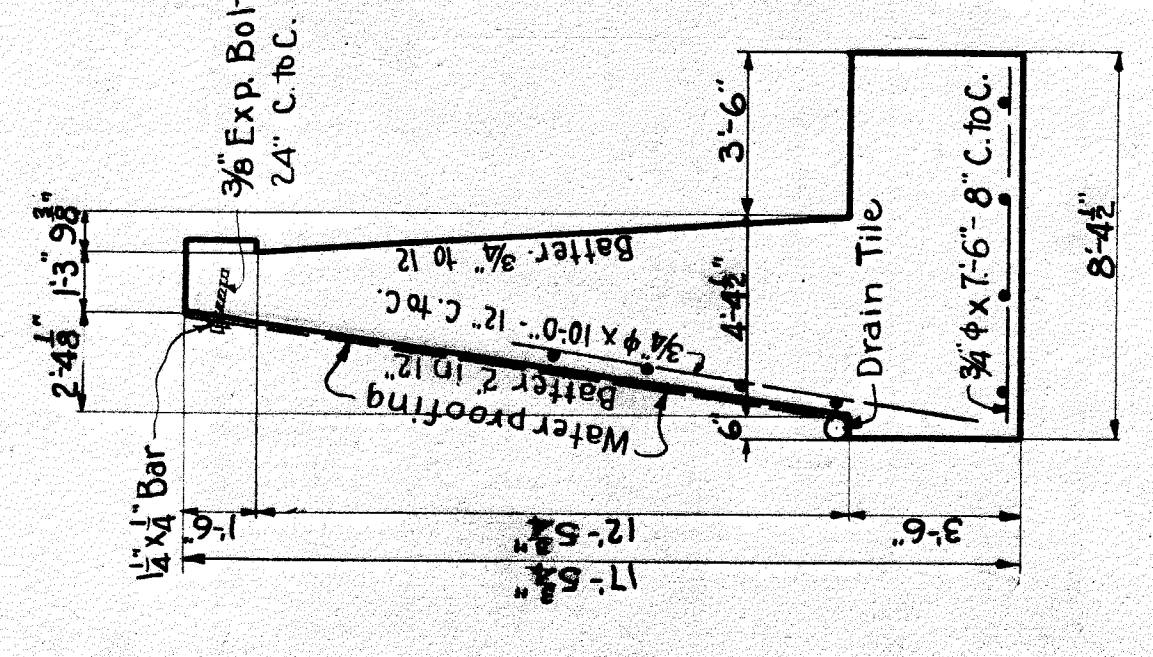
ITEM	UNIT	EST.	ACTUAL
Footings Concrete	C.Y.		
Abutment	Sqs		
Waterproofing	Lbs.		
Rein. Steel	C.Y.		
Stairway Concrete	C.Y.		
1/4" x 1/4" Bar	L.F.		

PLAN

ELEVATION



SECTION A-A



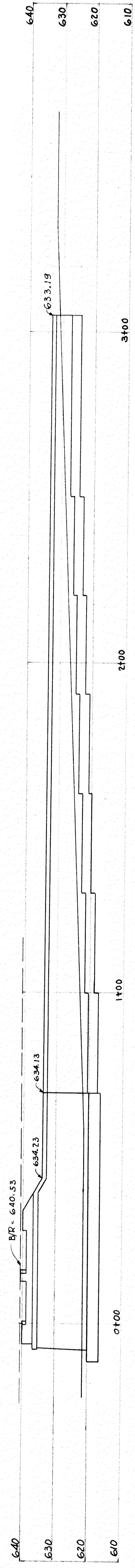
VIEW B-B

TABLE OF RODS

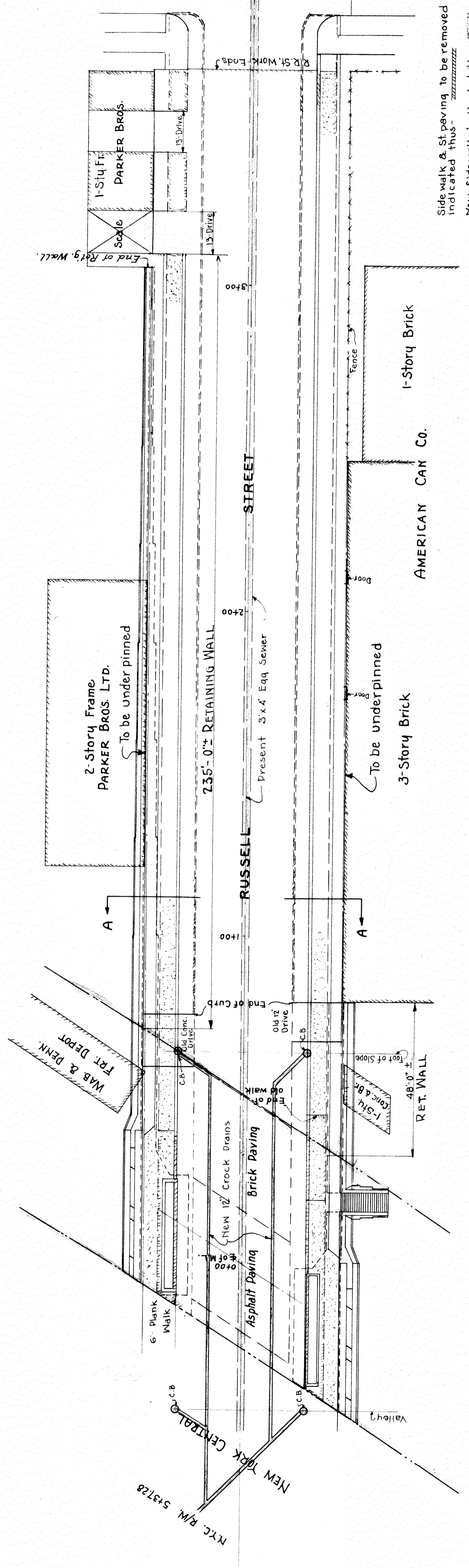
No.	SIZE	LENGTH	LOCATION
53	1" φ	12'-0"	Vertical Body
23	3/4" φ	10'-0"	"
14	3/4" φ	21'-6"	Horz.
5	3/4" φ	14'-0"	"
34	3/4" φ	7'-6"	Trans. Footing, Bot.
2	3/4" φ	8'-6"	"
2	3/4" φ	9'-6"	"
2	3/4" φ	11'-0"	"
3	3/4" φ	13'-0"	"
60	3/4" φ	19'-6"	Horz.
2	1/2" φ	24'-6"	"
2	1/2" φ	23'-0"	"
9	1/2" φ	21'-0"	"
1	1/2" φ	20'-0"	"
2	1/2" φ	19'-0"	"
2	1/2" φ	18'-6"	"
2	1/2" φ	18'-0"	"
1	1/2" φ	17'-6"	"
36	3/4" φ	12'-0"	Trans.
12	1/2" φ	18'-9"	Horz.
4	1/2" φ	14'-0"	Bot.
2	3/4" φ	13'-0"	Stairway Walls, Bent.
2	3/4" φ	12'-0"	"
2	3/4" φ	11'-0"	"
2	3/4" φ	10'-0"	"
2	3/4" φ	9'-0"	"
2	3/4" φ	8'-0"	"
2	3/4" φ	7'-0"	"
8	3/4" φ	25'-0"	Str. Dowels
26	3/4" φ	2'-6"	"

SECTION A-A

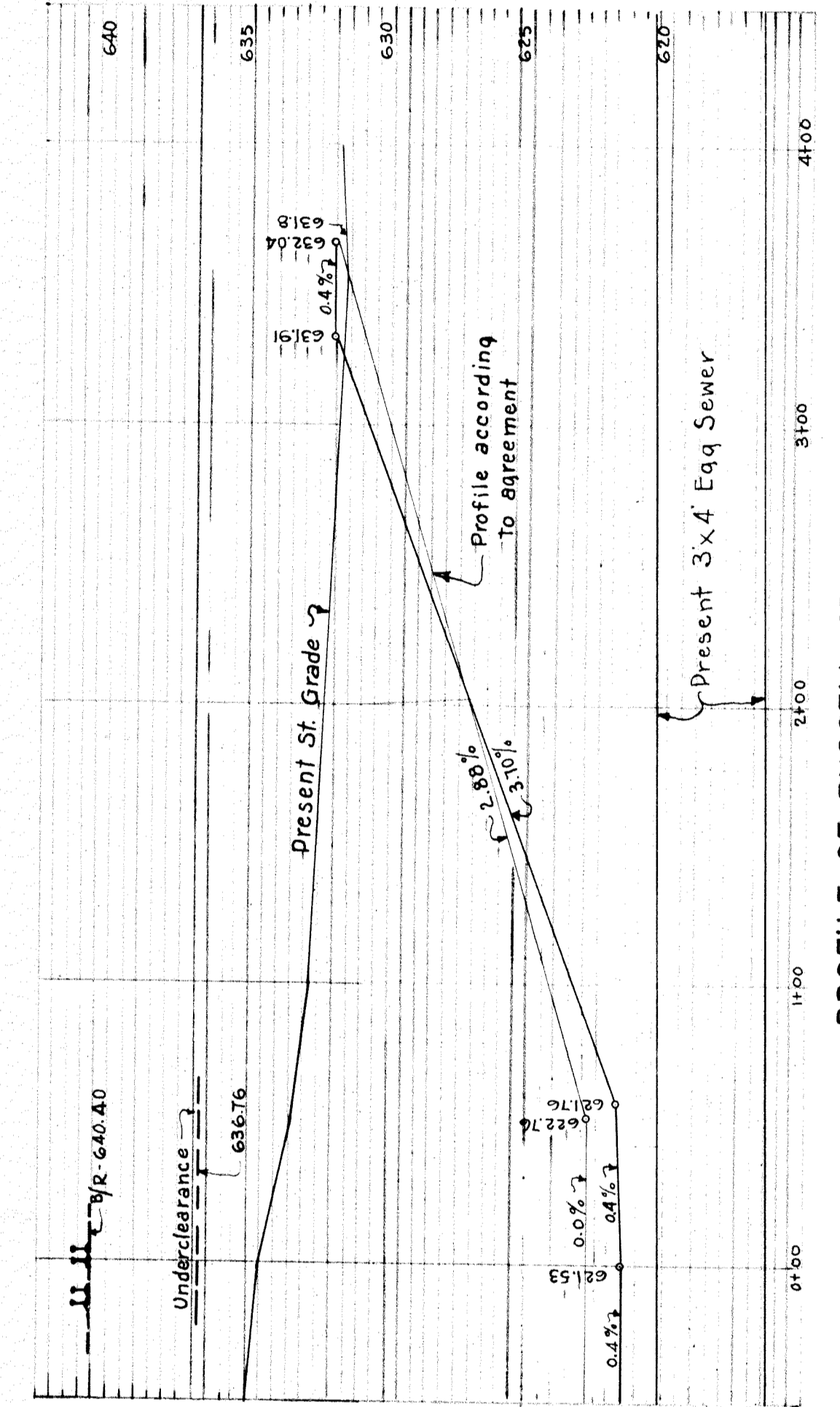
VIEW B-B



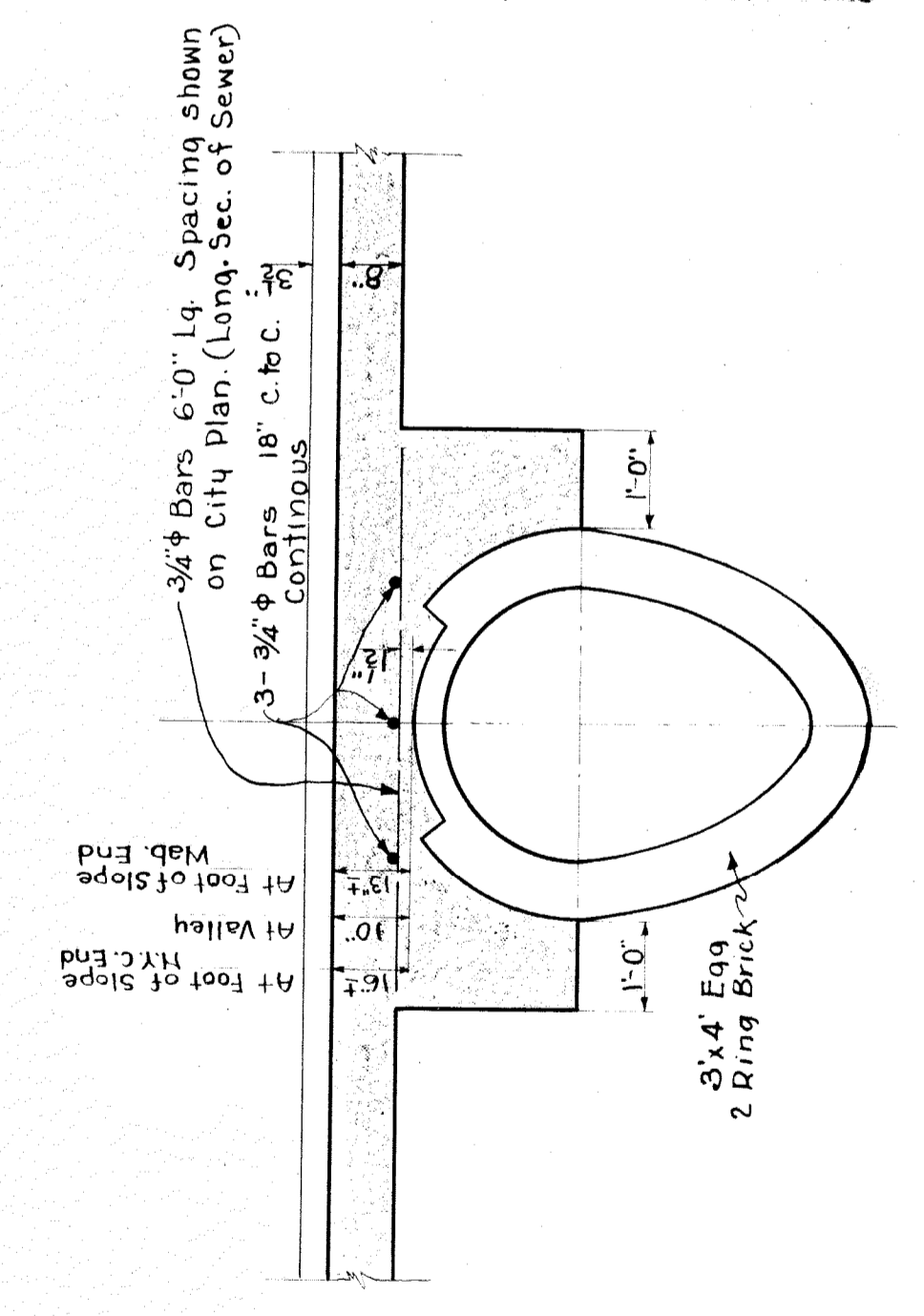
ELEVATION OF WEST ABUT. & RETAINING WALL
Scale: 1"=20'



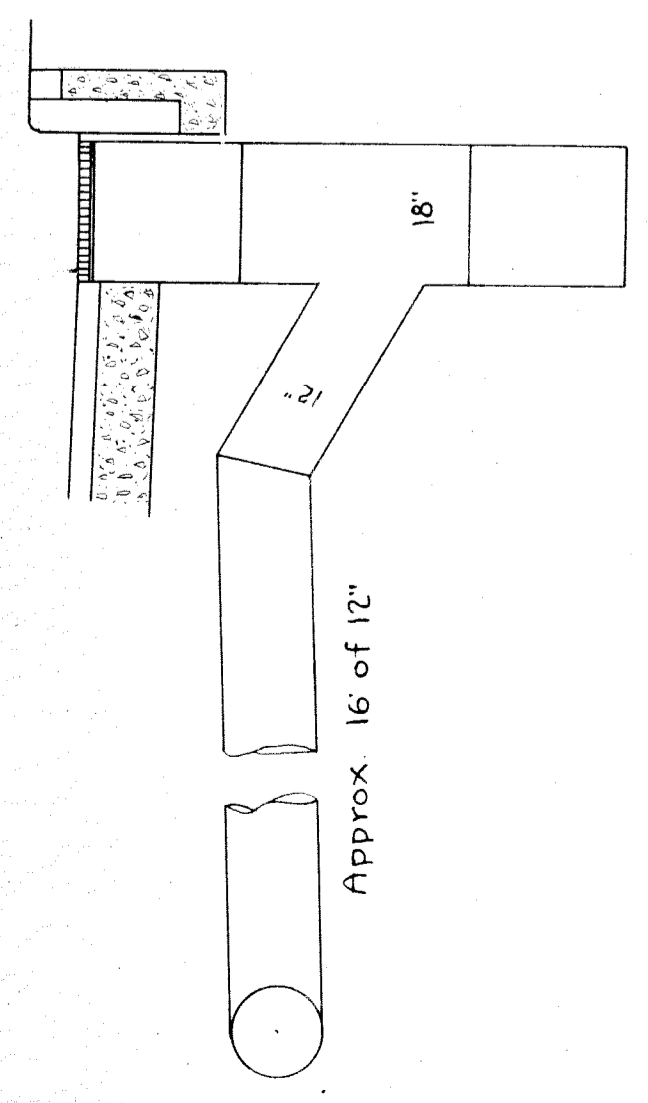
GENERAL PLAN
Scale: 1"=20'



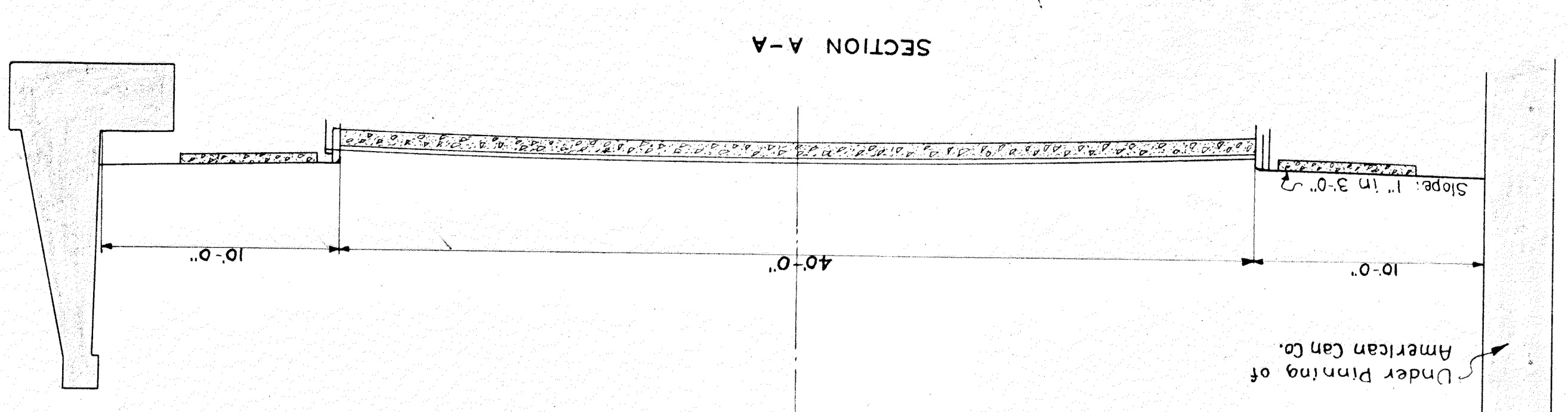
PROFILE OF RUSSELL ST. NORTH
Scale: - Ver. 1"=5'
Hor. 1"=50'



SECTION - Showing Details of Paving over existing Sewer. Between Sta. 0+45 & 0+65
Scale: 1/2"=1'-0'



TYPICAL CATCH BASIN
Scale: 1/2"=1'-0'



SECTION A-A

WABASH RAILWAY
DETROIT TERMINAL DIVISION
GENERAL PLAN
RUSSELL STREET
DETROIT, MICHIGAN

OFFICE OF THE CHIEF ENGINEER
SCAL: SHOWN April 23, 1928
REVISED MAY 7, 28
SHEET 9 OF 11
CHECKED BY A.H.S.
DRAWN BY F.L.M.

Handrail at the option of the Chief Engineer

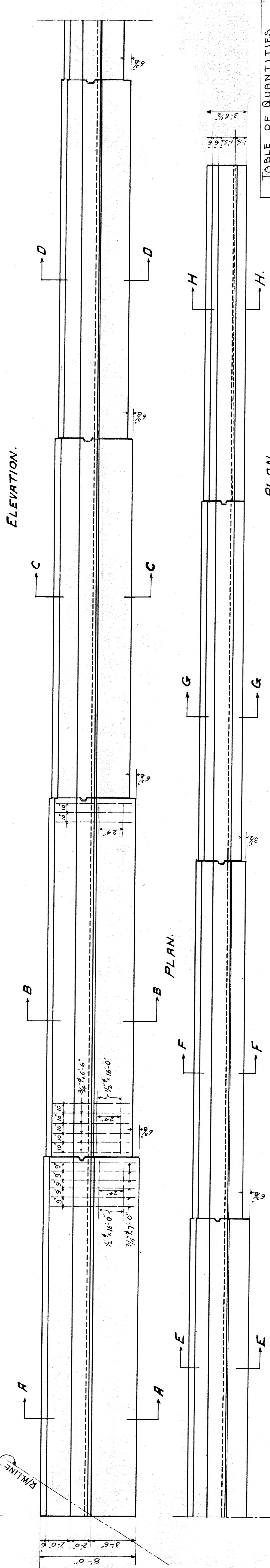
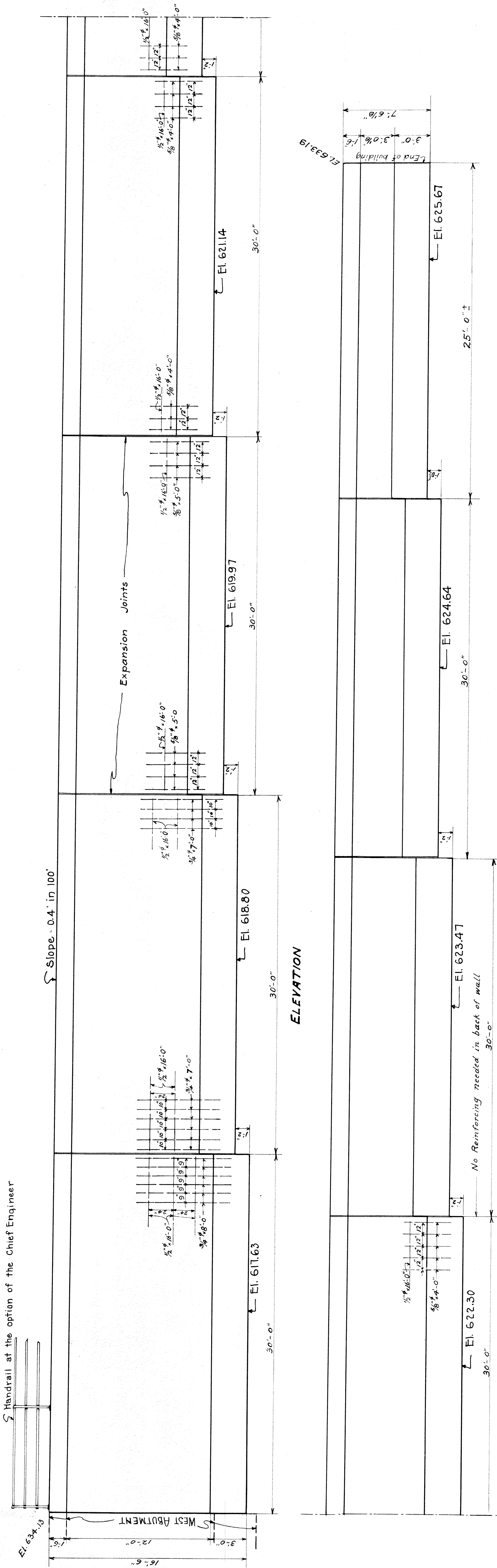


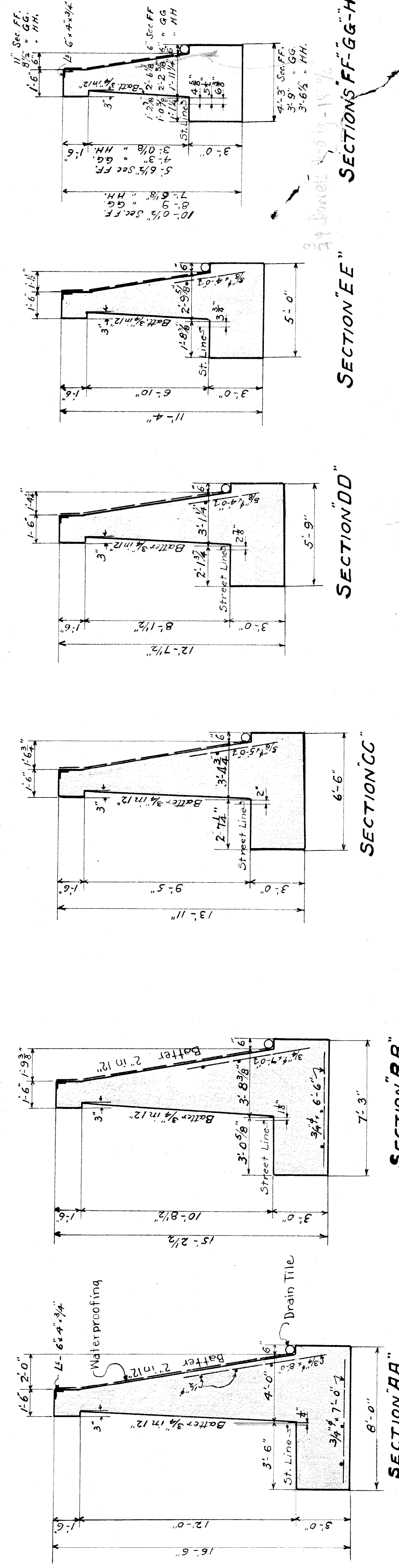
TABLE OF QUANTITIES

ITEM	UNIT	EST.	ACT.
Footings	Concrete	C.Y.	
Abut.	"	"	
Waterproofing	Sqs.		
Rein. Steel	Lbs.		

TABLE OF RODS.

NO.	SIZE	LENGTH	C.S.C.	REMARKS.
40	3/4"	7'-0"	9'	1/2 Footing.
36	3/4"	6'-6"	10'	"
8	1/2"	16'-0"	24'	"
40	3/4"	8'-0"	9'	1/2 Back of Wall
36	3/4"	7'-0"	10'	"
30	3/4"	5'-0"	12'	"
30	3/4"	4'-0"	12'	"
16	1/2"	16'-0"	24'	"

PLAN.



WABASH RAILWAY
DETROIT TERMINAL DIVISION
WEST RETAINING WALL
RUSSELL STREET
DETROIT, MICHIGAN

OFFICE OF THE CHIEF ENGINEER
SCALE: 1/4" = 1'-0"
APRIL 4 1928
REVISED MAY 7-28
SHEET 10 OF 11
DRAWN BY N.R.B. CHECKED BY A.M. ENGINEER BY A.H.S.

16'-6" x 4'-3/4" x 15'-0" long
1'-6" x 4'-3/4" x 15'-0" long

SECTION "FF" - GG - HH

SECTION "EE"

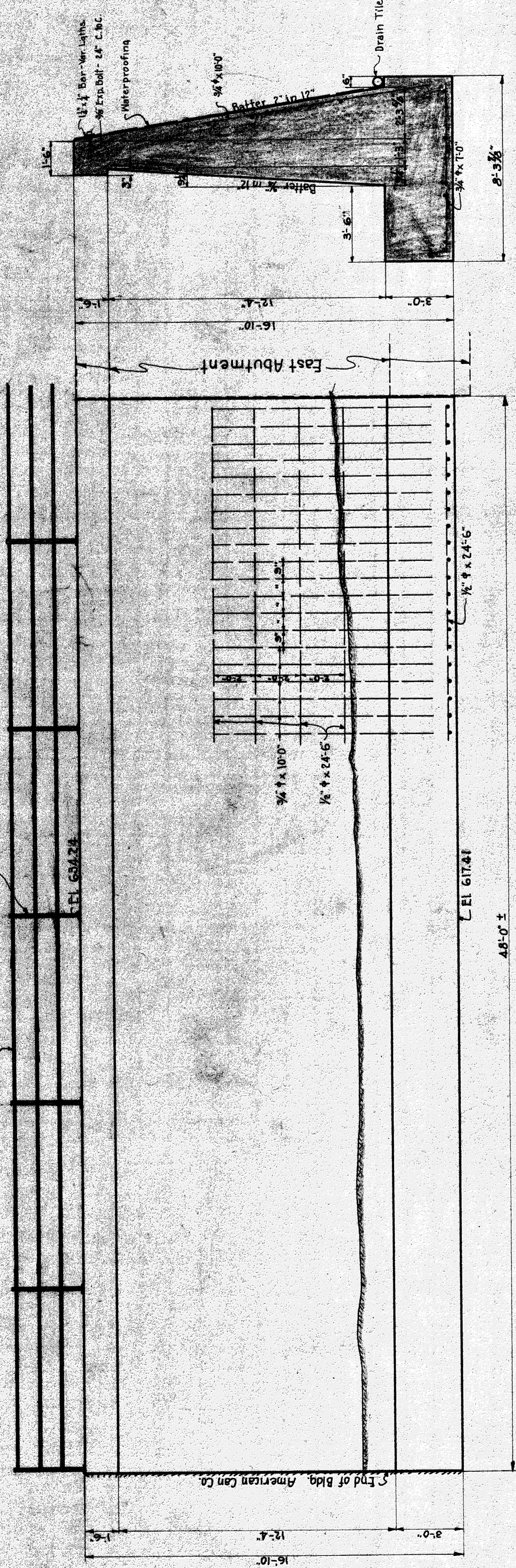
SECTION "DD"

SECTION "CC"

SECTION "BB"

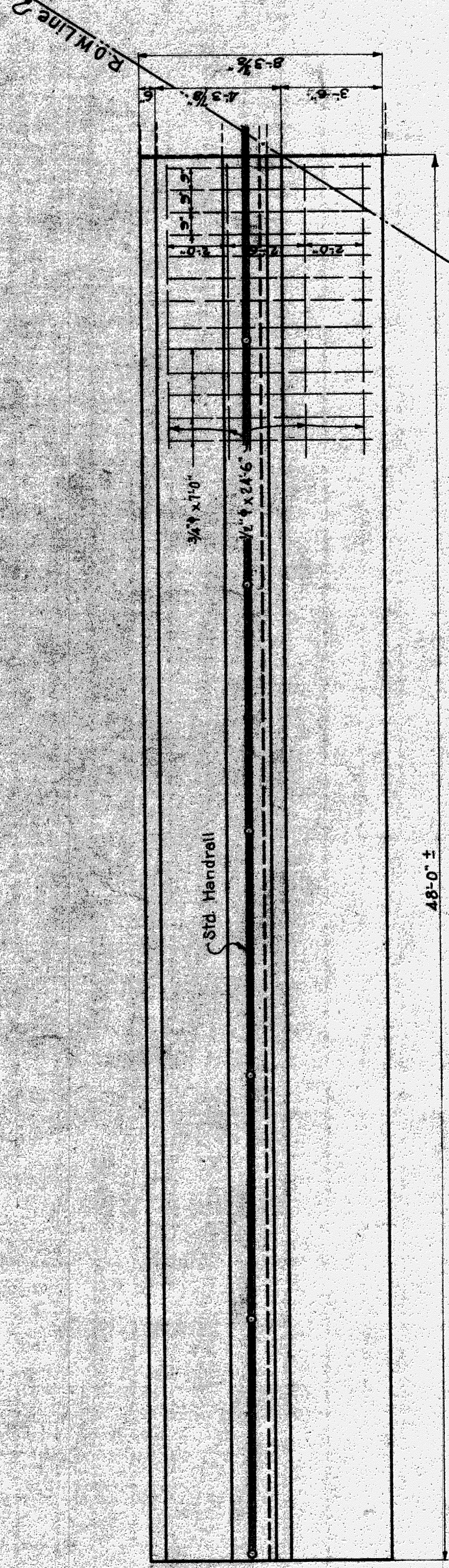
SECTION "AA"

Std. H.L. Pipe Handrail - See Std. Plan Dated 3-17-25.
Style C Posts



ELEVATION

SECTION



PLAN

TABLE OF RODS			
No.	SIZE	LENGTH	C.M.C. LOCATION
64	3/4"	7'-0"	9" Hor. Footing
64	3/4"	10'-0"	9" Ver. Abut.
8	1/2"	24'-6"	2'-0" Long.
8	1/2"	24'-6"	2'-0" Footing

TABLE OF QUANTITIES			
Item	Unit	Est.	Actual
Excavation	C.Y.		
Backfill	"		
Sheeting & Shoring	Sq. Ft.		
Footing Concrete	C.Y.		
Abutment	"		
Reinforcing Steel	Lbs.		
Waterproofing	Sqs.		
1/2" x 1/4" Bar - Ver. Laths	L.F.		

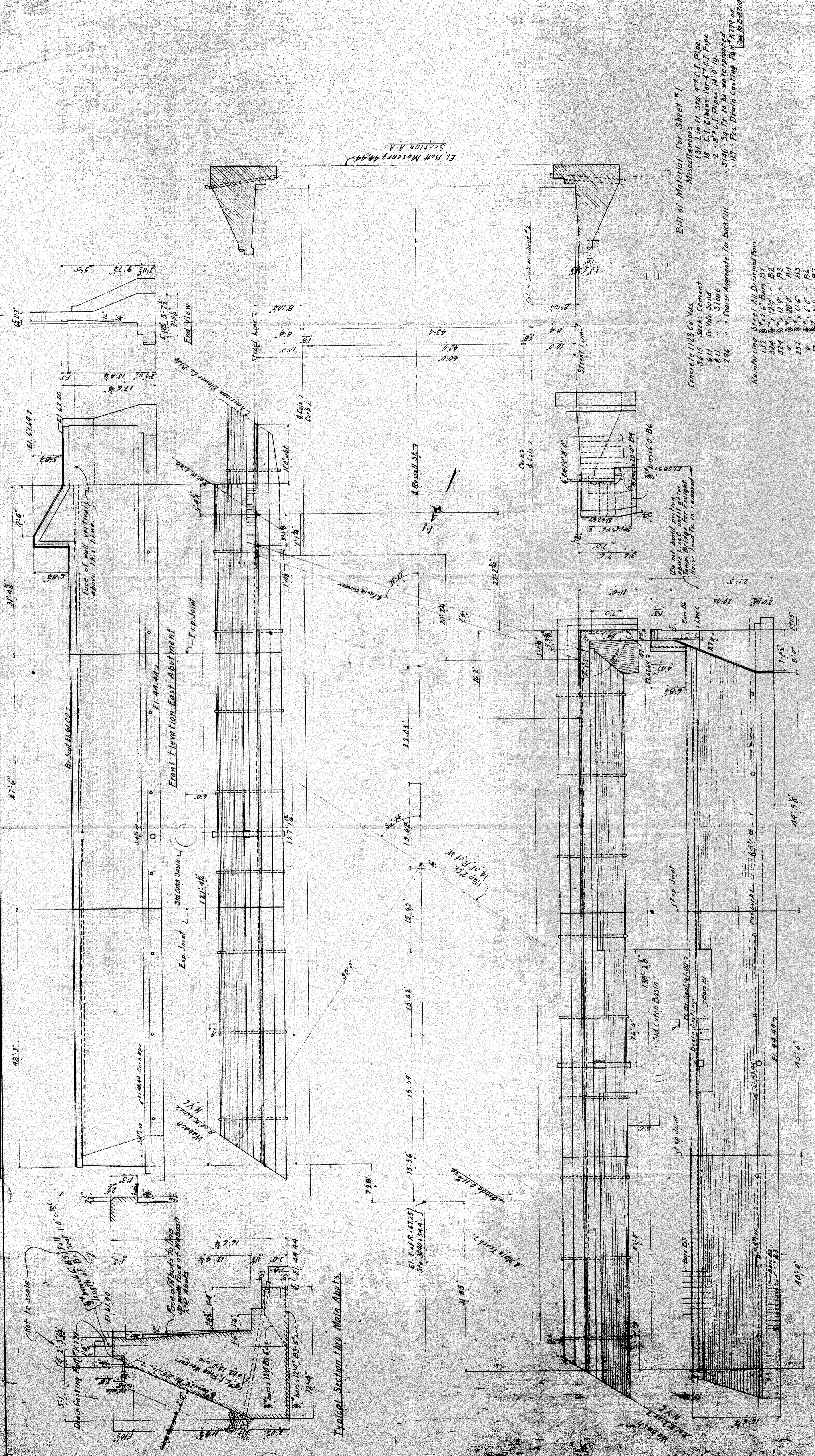
WABASH RAILWAY
DETROIT TERMINAL DIVISION
EAST RETAINING WALL
RUSSELL STREET
DETROIT, MICHIGAN

OFFICE OF THE CHIEF ENGINEER
SCALE: 3/8" = 1'-0"
April 24, 1928
REV. 5-9-22

SHEET NO. 11

DRAWN BY N.B.B. CHECKED BY E.L.M. DESIGNED BY A.H.S.

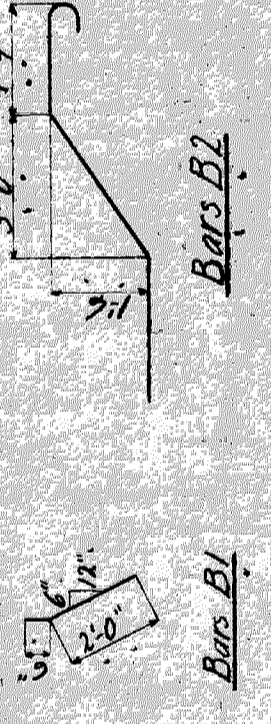
PLAN NO.



Typical Section thru Main Abutments

Rear Elevation West Abutment

Front Elevation East Abutment



- Bill of Material - For Sheet #1**
- Miscellaneous
- 231 - Lin ft Std 4" C.I. Pipe
 - 18 - C.I. Elbows for 4" C.I. Pipe
 - 2 - 8" C.I. Pipes (4' x 1/2")
 - 5140 - Sq Ft. to be waterproofed
 - 117 - Pcs. Drain Casting (4" x 17 1/2" x 10")
- Concrete 1103 Cu Yds
- 5615 - Jacks Cement
 - 611 - Cu Yds Sand
 - 811 - Stone
 - 206 - Coarse Aggregate for Backfill
- Reinforcing Steel, All Deformed Bars
- 132 - 3/4" x 12' Bars B1
 - 324 - 3/4" x 12' " B2
 - 324 - 3/4" x 12' " B3
 - 9 - 3/4" x 20' " B4
 - 252 - 3/4" x 6' " B5
 - 6 - 3/4" x 6' " B6
 - 12 - 3/4" x 5' " B7

See Sheet #2 for remainder of Masonry
Col Bents & Slabs.

N.Y.C.R.R. WEST BRIDGE DEPT. R.O. ROUTE C.E.
BRIDGE No. DETROIT DIV.
OVER RUSSELL ST.
DETROIT, MICH.
MASONRY PLAN
SHEET 1072

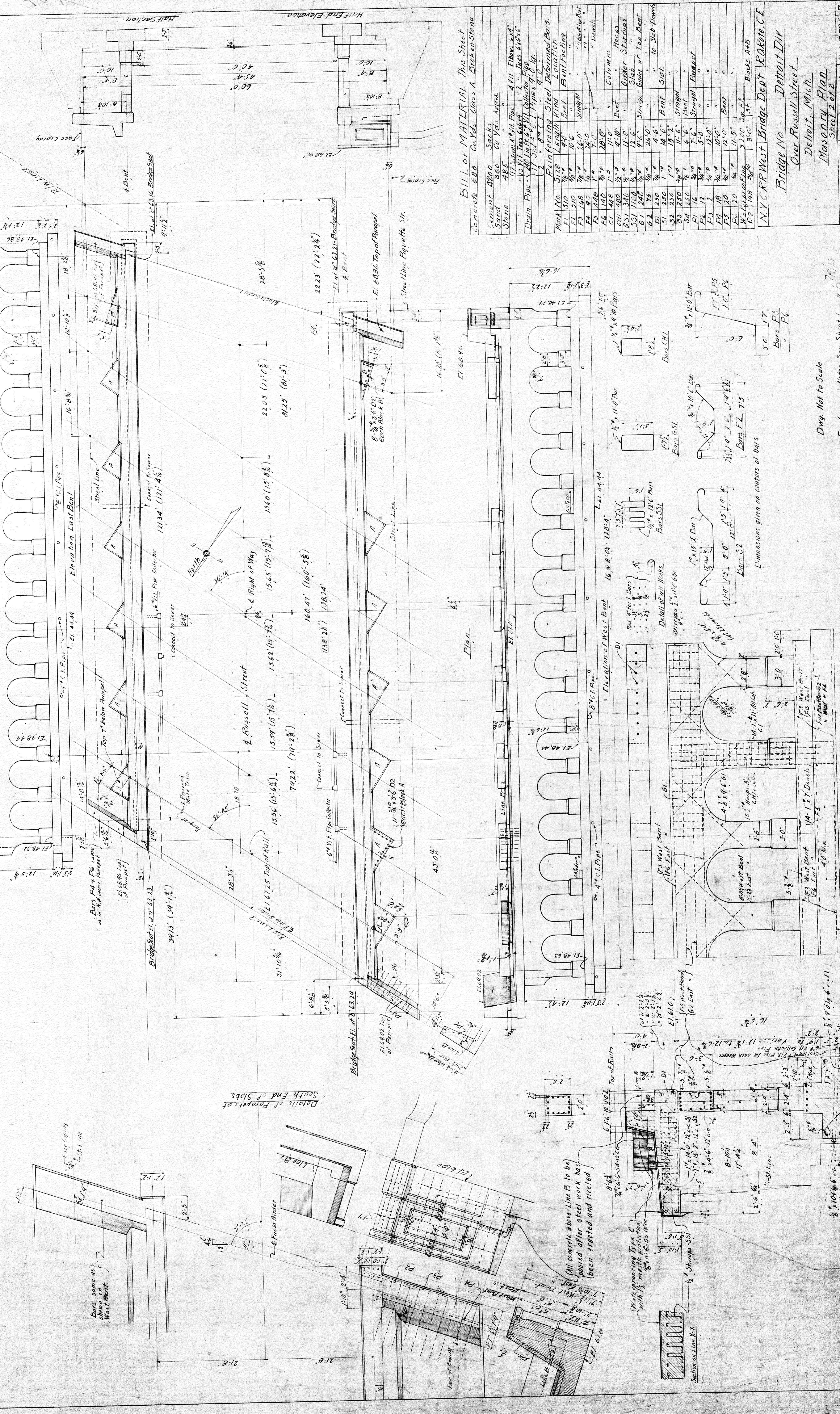
General Notes:
N.Y.C.R.R. Specifications No. 3005
Issue 4 of 1921, for Concrete Masonry
and supplemented by instructions
B-8410.
Broken Stone Concrete Class E.

APPROVED FOR THE CITY OF DETROIT

CITY ENGINEER

SCALE 1/4" = 1'-0" MAY 16, 1928 No. B-8736 B
Rev. 10/28 each increasing Buffer of Foot of Abutts.

14 8 22 1/2 = 114 7/8
 FIG. 97
 Scale 1/8" = 1'-0"

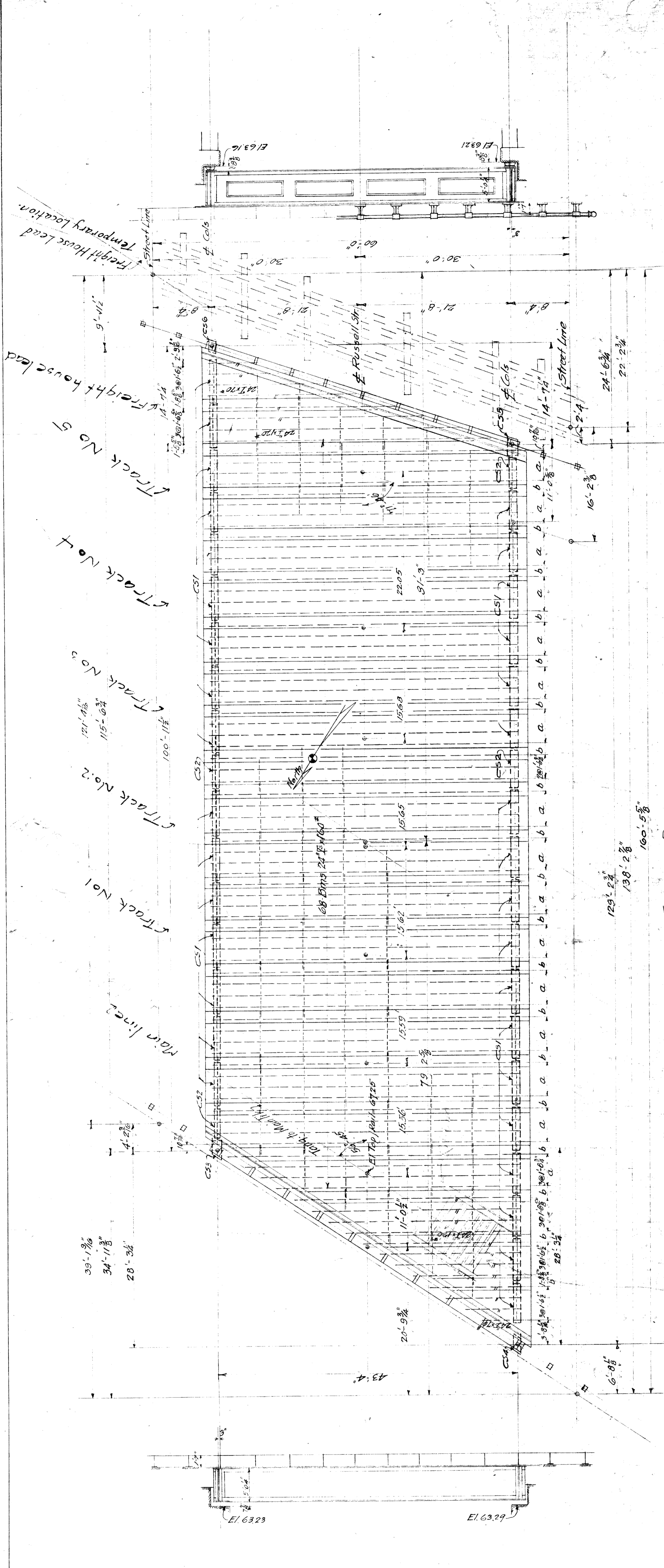


BILL OF MATERIAL This Sheet
 Concrete 880 Cu Yds Class A Broken Stone

Cement	4200	Sacks
Sand	360	Cu Yds Approx
Stone	425	"
Drain Pipe	13 1/2	Feet Length
11" Dia. V.I. Pipe	47 1/2	Elbows, etc.
13 1/2" Dia. V.I. Collecting Pipe	1	"
11" Dia. V.I. Pipes	9	"
11" Dia. V.I. Pipes	9	"

MINA No.	SIZE	LENGTH	STEEL REINFORCING
F1	5/8"	12'-0"	Bent
F2	5/8"	12'-0"	Bent
F3	5/8"	12'-0"	Bent
F4	5/8"	12'-0"	Bent
F5	5/8"	12'-0"	Bent
F6	5/8"	12'-0"	Bent
F7	5/8"	12'-0"	Bent
F8	5/8"	12'-0"	Bent
F9	5/8"	12'-0"	Bent
F10	5/8"	12'-0"	Bent
F11	5/8"	12'-0"	Bent
F12	5/8"	12'-0"	Bent
F13	5/8"	12'-0"	Bent
F14	5/8"	12'-0"	Bent
F15	5/8"	12'-0"	Bent
F16	5/8"	12'-0"	Bent
F17	5/8"	12'-0"	Bent
F18	5/8"	12'-0"	Bent
F19	5/8"	12'-0"	Bent
F20	5/8"	12'-0"	Bent
F21	5/8"	12'-0"	Bent
F22	5/8"	12'-0"	Bent
F23	5/8"	12'-0"	Bent
F24	5/8"	12'-0"	Bent
F25	5/8"	12'-0"	Bent
F26	5/8"	12'-0"	Bent
F27	5/8"	12'-0"	Bent
F28	5/8"	12'-0"	Bent
F29	5/8"	12'-0"	Bent
F30	5/8"	12'-0"	Bent
F31	5/8"	12'-0"	Bent
F32	5/8"	12'-0"	Bent
F33	5/8"	12'-0"	Bent
F34	5/8"	12'-0"	Bent
F35	5/8"	12'-0"	Bent
F36	5/8"	12'-0"	Bent
F37	5/8"	12'-0"	Bent
F38	5/8"	12'-0"	Bent
F39	5/8"	12'-0"	Bent
F40	5/8"	12'-0"	Bent
F41	5/8"	12'-0"	Bent
F42	5/8"	12'-0"	Bent
F43	5/8"	12'-0"	Bent
F44	5/8"	12'-0"	Bent
F45	5/8"	12'-0"	Bent
F46	5/8"	12'-0"	Bent
F47	5/8"	12'-0"	Bent
F48	5/8"	12'-0"	Bent
F49	5/8"	12'-0"	Bent
F50	5/8"	12'-0"	Bent
F51	5/8"	12'-0"	Bent
F52	5/8"	12'-0"	Bent
F53	5/8"	12'-0"	Bent
F54	5/8"	12'-0"	Bent
F55	5/8"	12'-0"	Bent
F56	5/8"	12'-0"	Bent
F57	5/8"	12'-0"	Bent
F58	5/8"	12'-0"	Bent
F59	5/8"	12'-0"	Bent
F60	5/8"	12'-0"	Bent
F61	5/8"	12'-0"	Bent
F62	5/8"	12'-0"	Bent
F63	5/8"	12'-0"	Bent
F64	5/8"	12'-0"	Bent
F65	5/8"	12'-0"	Bent
F66	5/8"	12'-0"	Bent
F67	5/8"	12'-0"	Bent
F68	5/8"	12'-0"	Bent
F69	5/8"	12'-0"	Bent
F70	5/8"	12'-0"	Bent
F71	5/8"	12'-0"	Bent
F72	5/8"	12'-0"	Bent
F73	5/8"	12'-0"	Bent
F74	5/8"	12'-0"	Bent
F75	5/8"	12'-0"	Bent
F76	5/8"	12'-0"	Bent
F77	5/8"	12'-0"	Bent
F78	5/8"	12'-0"	Bent
F79	5/8"	12'-0"	Bent
F80	5/8"	12'-0"	Bent
F81	5/8"	12'-0"	Bent
F82	5/8"	12'-0"	Bent
F83	5/8"	12'-0"	Bent
F84	5/8"	12'-0"	Bent
F85	5/8"	12'-0"	Bent
F86	5/8"	12'-0"	Bent
F87	5/8"	12'-0"	Bent
F88	5/8"	12'-0"	Bent
F89	5/8"	12'-0"	Bent
F90	5/8"	12'-0"	Bent
F91	5/8"	12'-0"	Bent
F92	5/8"	12'-0"	Bent
F93	5/8"	12'-0"	Bent
F94	5/8"	12'-0"	Bent
F95	5/8"	12'-0"	Bent
F96	5/8"	12'-0"	Bent
F97	5/8"	12'-0"	Bent
F98	5/8"	12'-0"	Bent
F99	5/8"	12'-0"	Bent
F100	5/8"	12'-0"	Bent

NYC RR West Bridge Dept RDR:R,C,E
 Bridge No. Detroit Dik
 Over Russell Street
 Detroit, Mich.
 Masonry Plan
 Sheet 2 of 2
 Scale 1/8" = 1'-0"
 May 16, 1928
 No. 8736
 R.C.E.



GENERAL PLAN

Notes covering temporary timber decks.
 Ties shall be spaced 10' along wooden structure.
 Ties shall be spaced to center 10' on
 wood pile.
 Ties spaced 10' center to center.
 Ties to be framed over splice plates and
 rivet heads to fastening on deck plate.
 If concrete parapet is not completed at
 time timber deck is laid, the portion
 of the deck plate of the steel bridge
 projecting over the parapets shall be
 blocked between the inner side of the
 plate and the masonry or secure
 manner to avoid wedging the deck
 plate.

General Notes - Sheet 2

NYC RR West Bridge Deck	ROBERT C. E.
Bridge No.	Detroit Div.
	Over Russell Street
Street Plan - General Layout	Detroit, Mich.
Sheet No.	Sheet 107
Date	June 12, 1928
Scale	1" = 10' - 0"
Drawn by	W. H. B. O'NEILL

Dr. 112 1096-18

