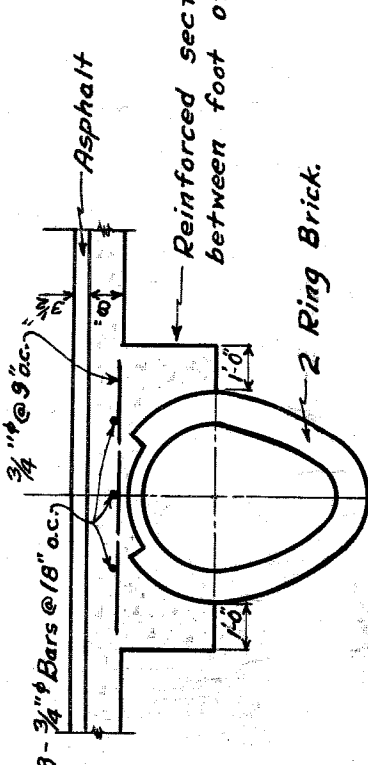


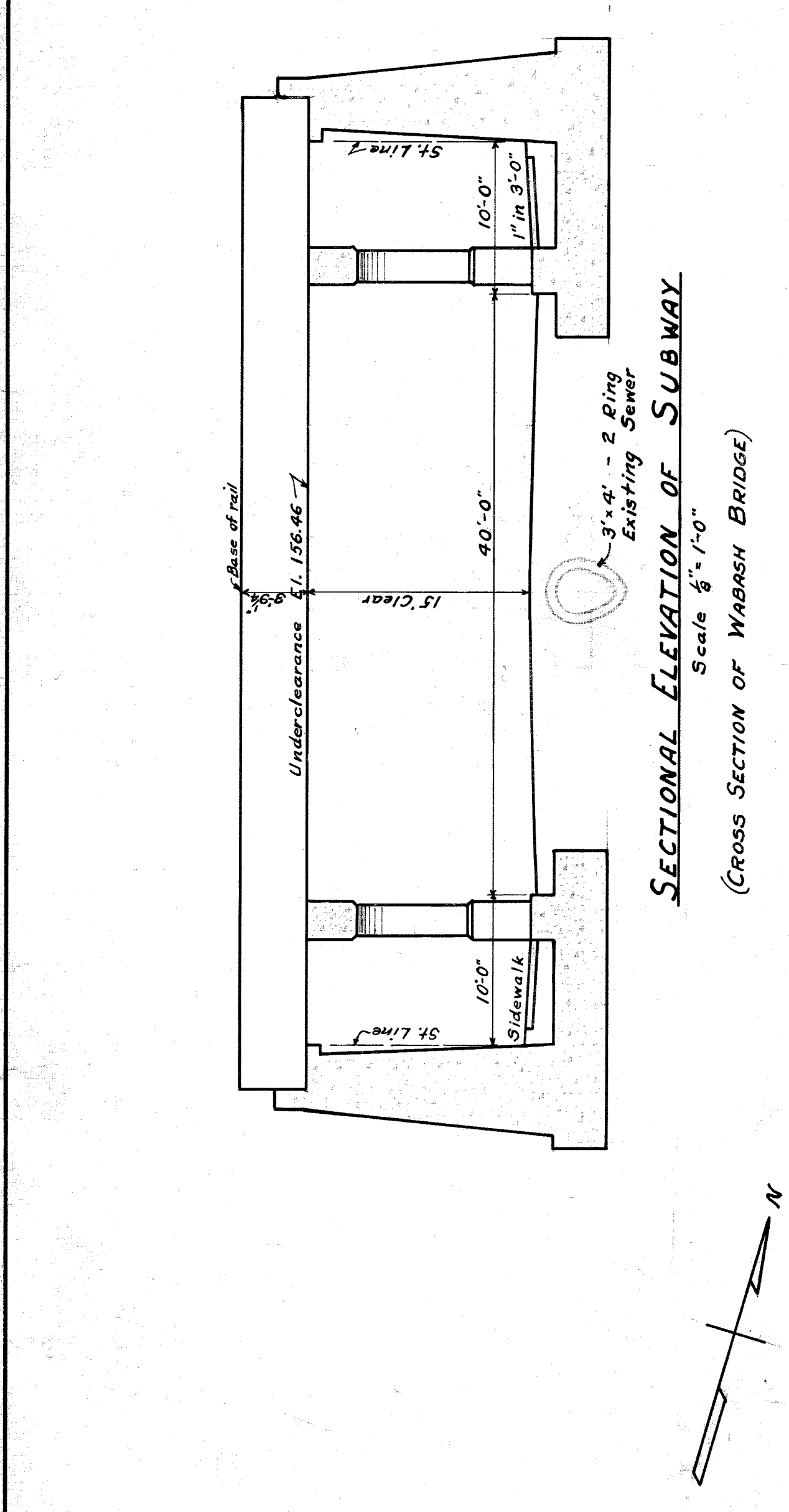
DRAINAGE PLAN
Scale 1" = 60'

Note: Details of slab reinforcing for special detail shown.
Reinforced section to extend between foot of slopes.

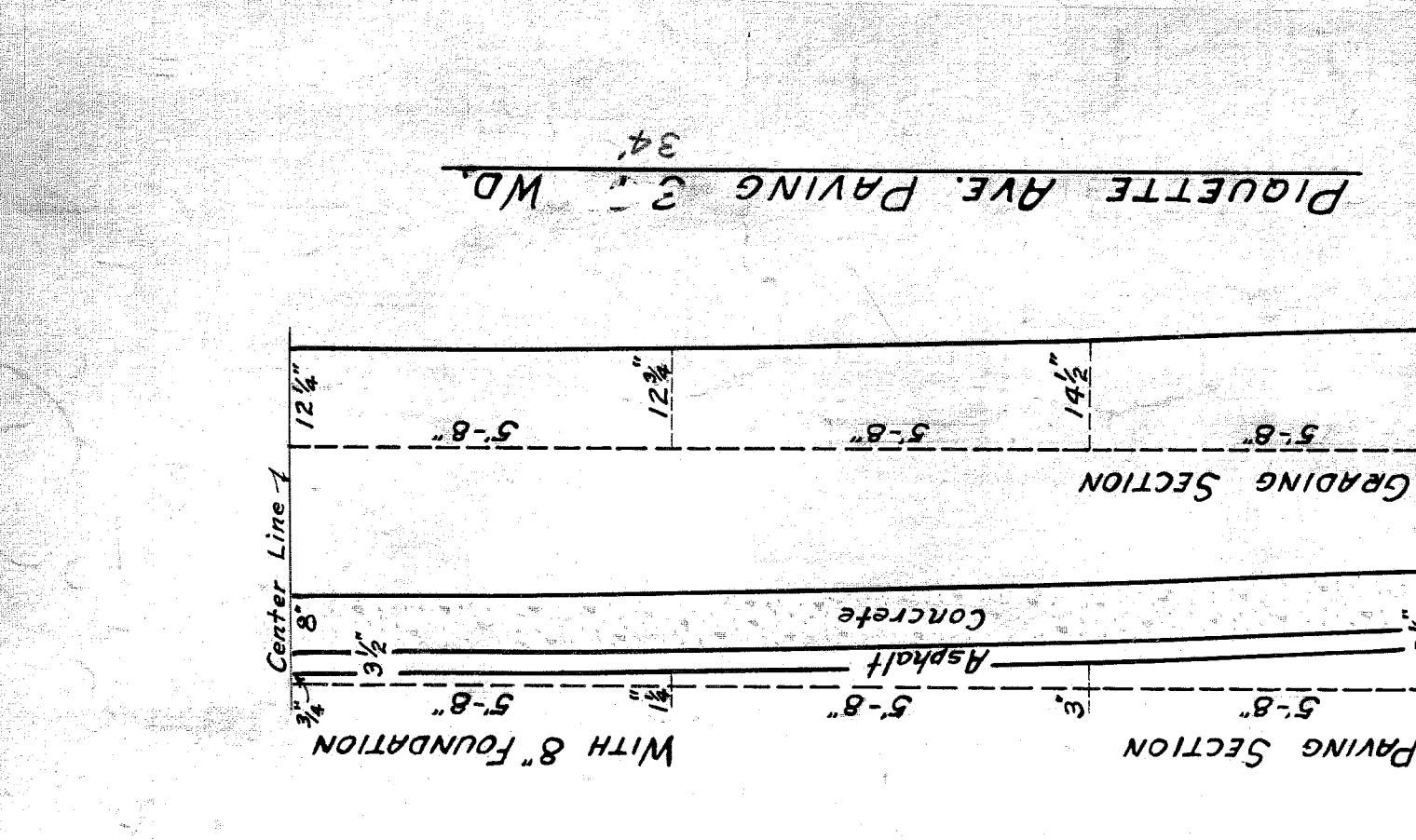


SEWER CROSS-SECTION
Scale 1" = 1'-0"

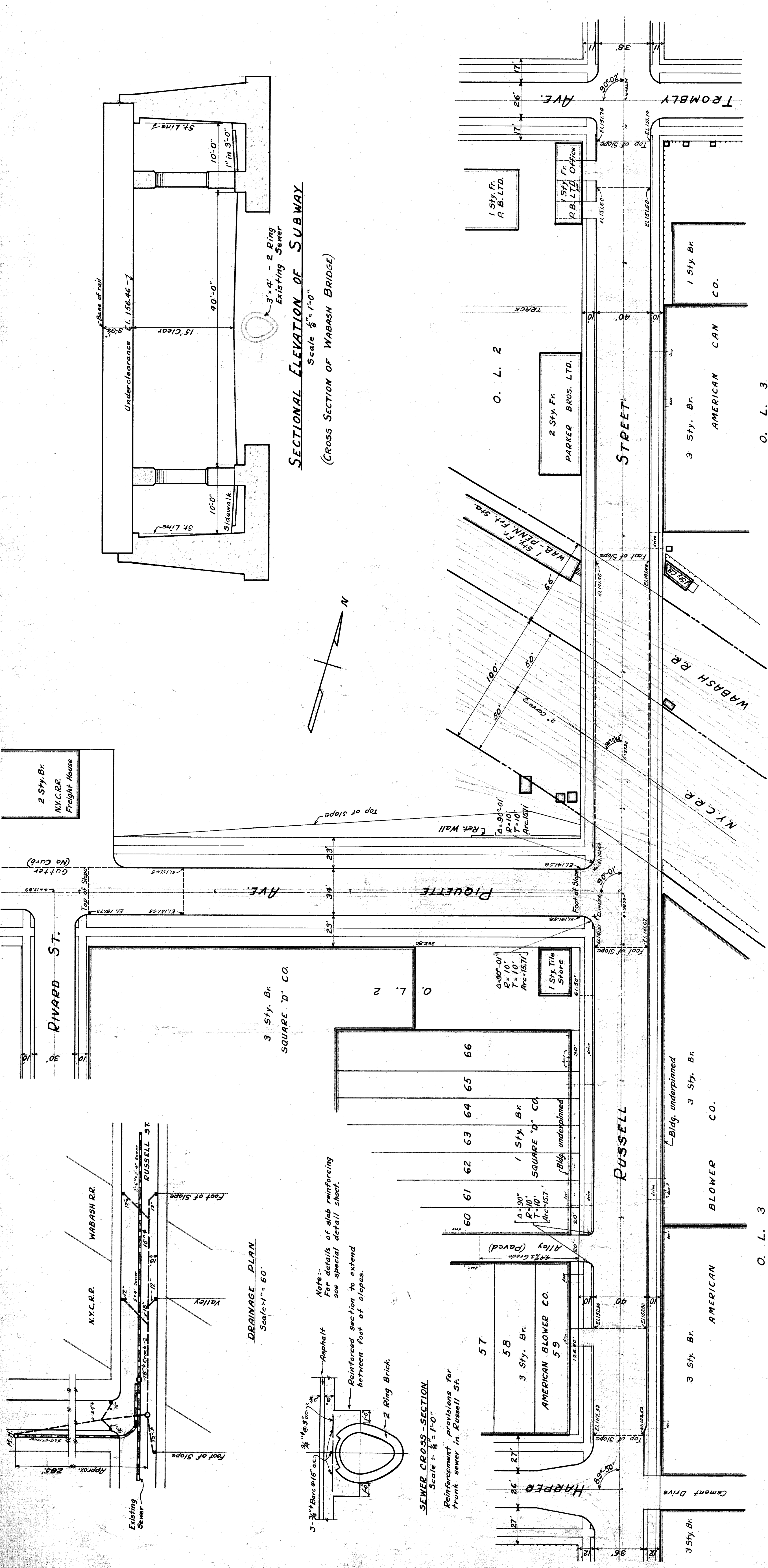
Reinforcement provisions for trunk sewer in Russell St.



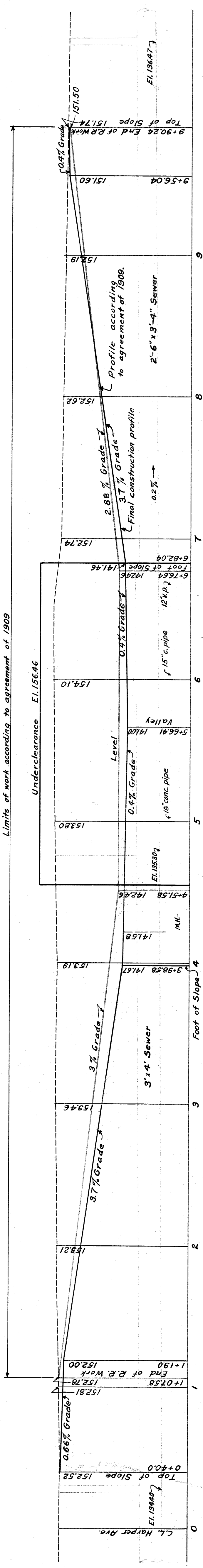
SECTIONAL ELEVATION OF SUBWAY
(CROSS SECTION OF WABASH BRIDGE)
Scale 1/2" = 1'-0"



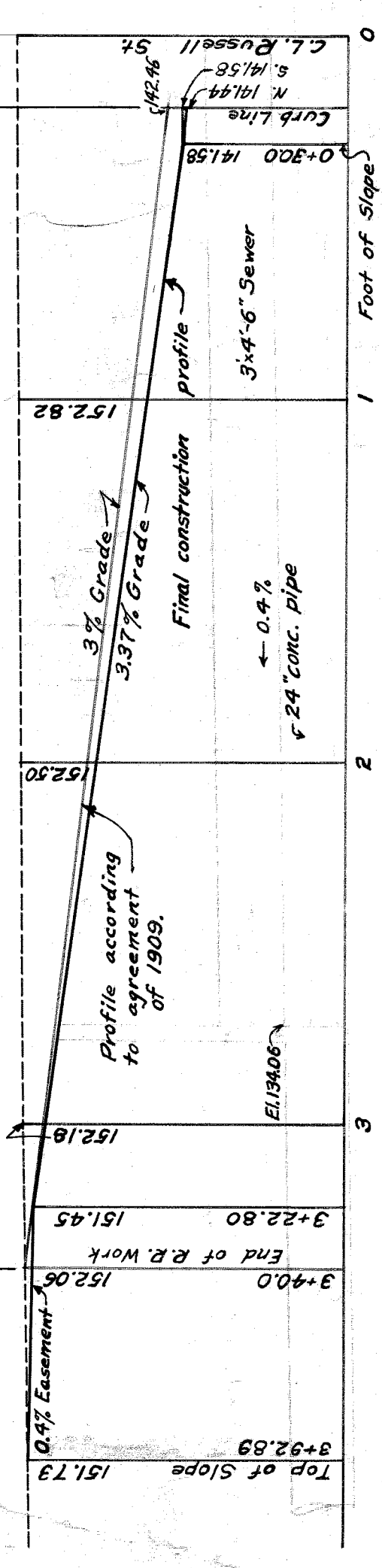
Note: Car tracks on Russell and Piquette Streets, within the limits of the Grade Separation, to be removed, permanently.



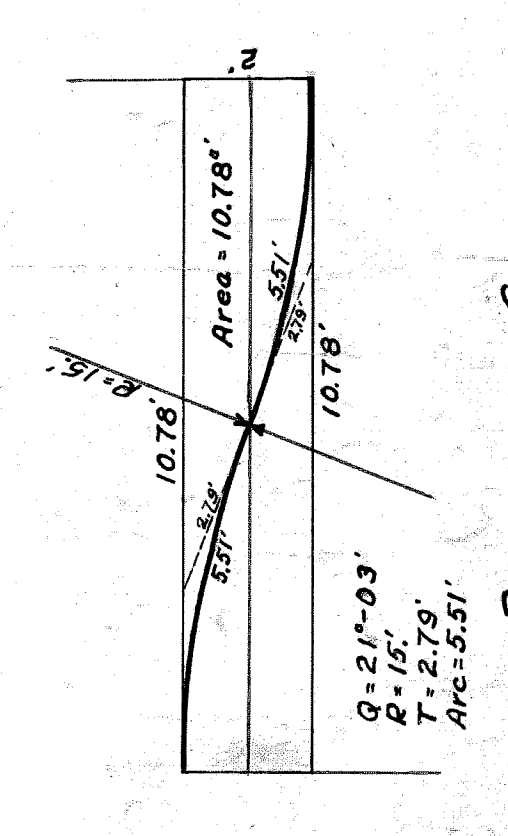
Limits of work according to agreement of 1909



PROFILE ON RUSSELL ST.
Scale - Horiz. 1" = 40', Vert. 1" = 10'



Limits of work according to agreement of 1909



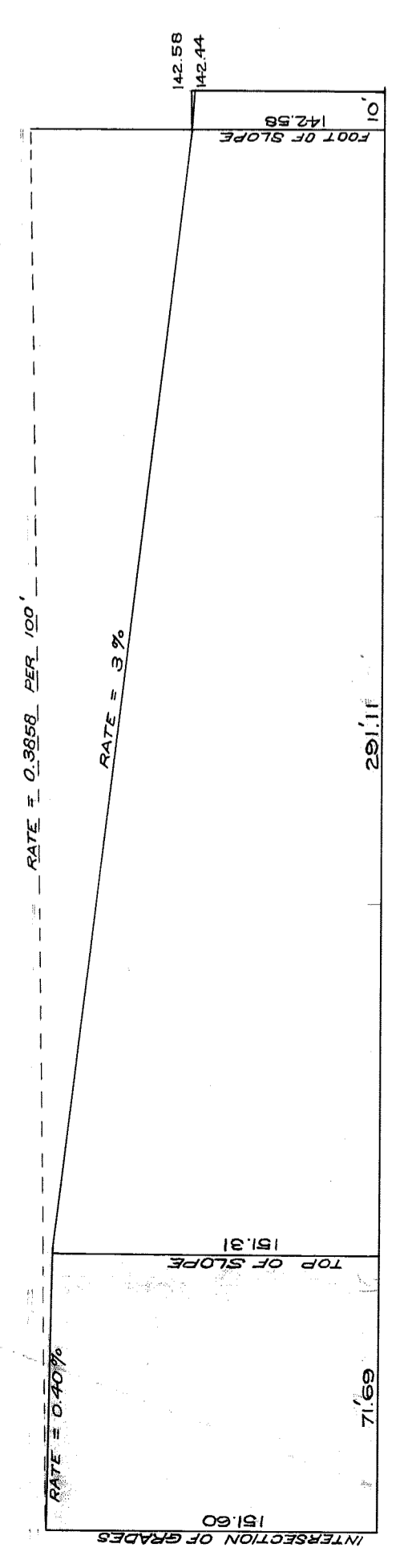
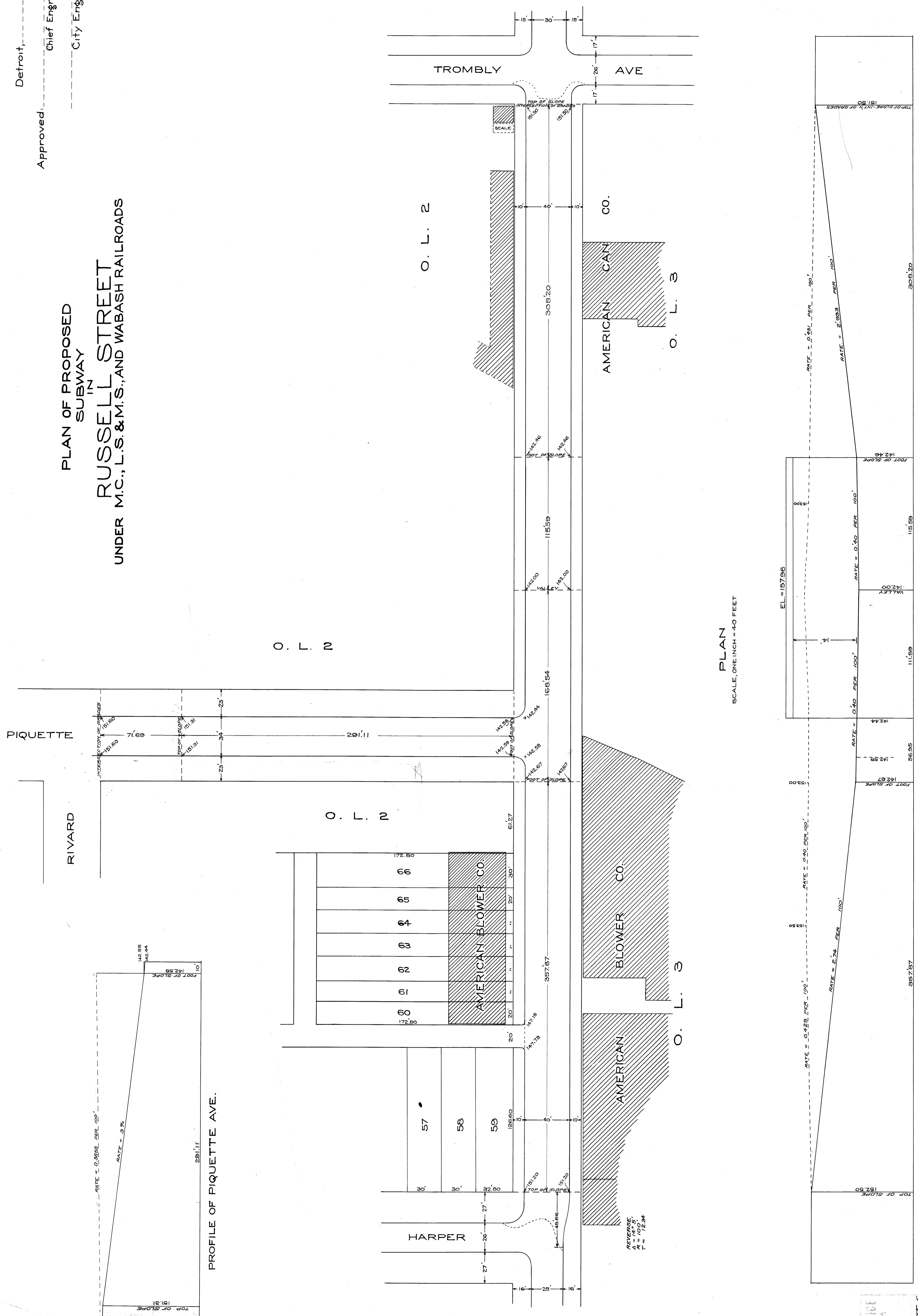
REVERSE CURVE
for widening pavement 36' to 40'

Approved: *A. A. Aote*
City Engineer: *Perry C. ...*
Chief Engineer: *N.Y.C.R.R.*
Asst. Chief Engineer: *Wabash R.R.*

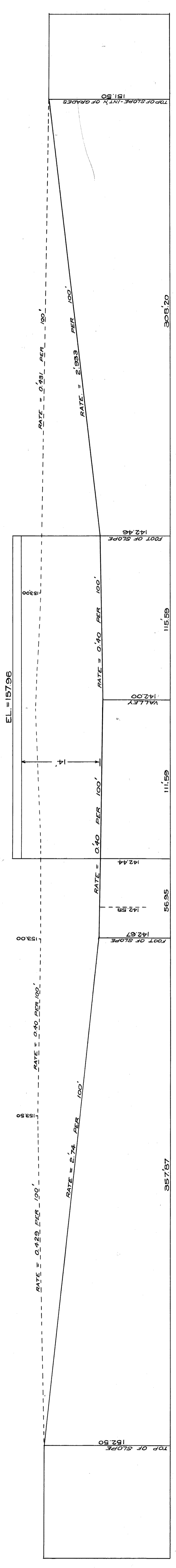
CITY OF DETROIT
DEPARTMENT OF PUBLIC WORKS
OFFICE OF CITY ENGINEER
DIVISION OF GRADE SEPARATION & BRIDGES
RUSSELL STREET
Scales - as shown
Drawn by J.T.K.
Checked by H.S. ...

Detroit, ----- 1913.
 Approved: ----- Chief Engr. M.C.R.R.
 ----- City Engineer

PLAN OF PROPOSED
 SUBWAY
 IN
RUSSELL STREET
 UNDER M.C., L.S. & M.S., AND WABASH RAILROADS



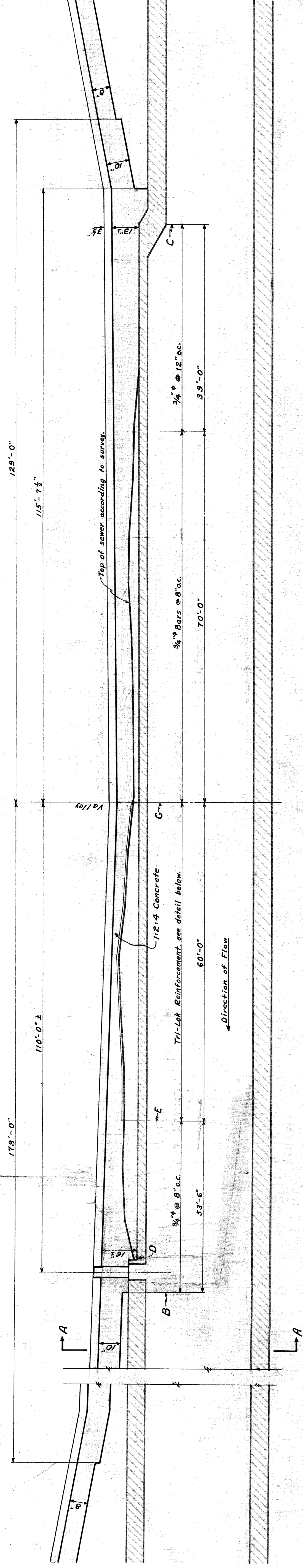
PLAN
 SCALE, ONE INCH = 40 FEET



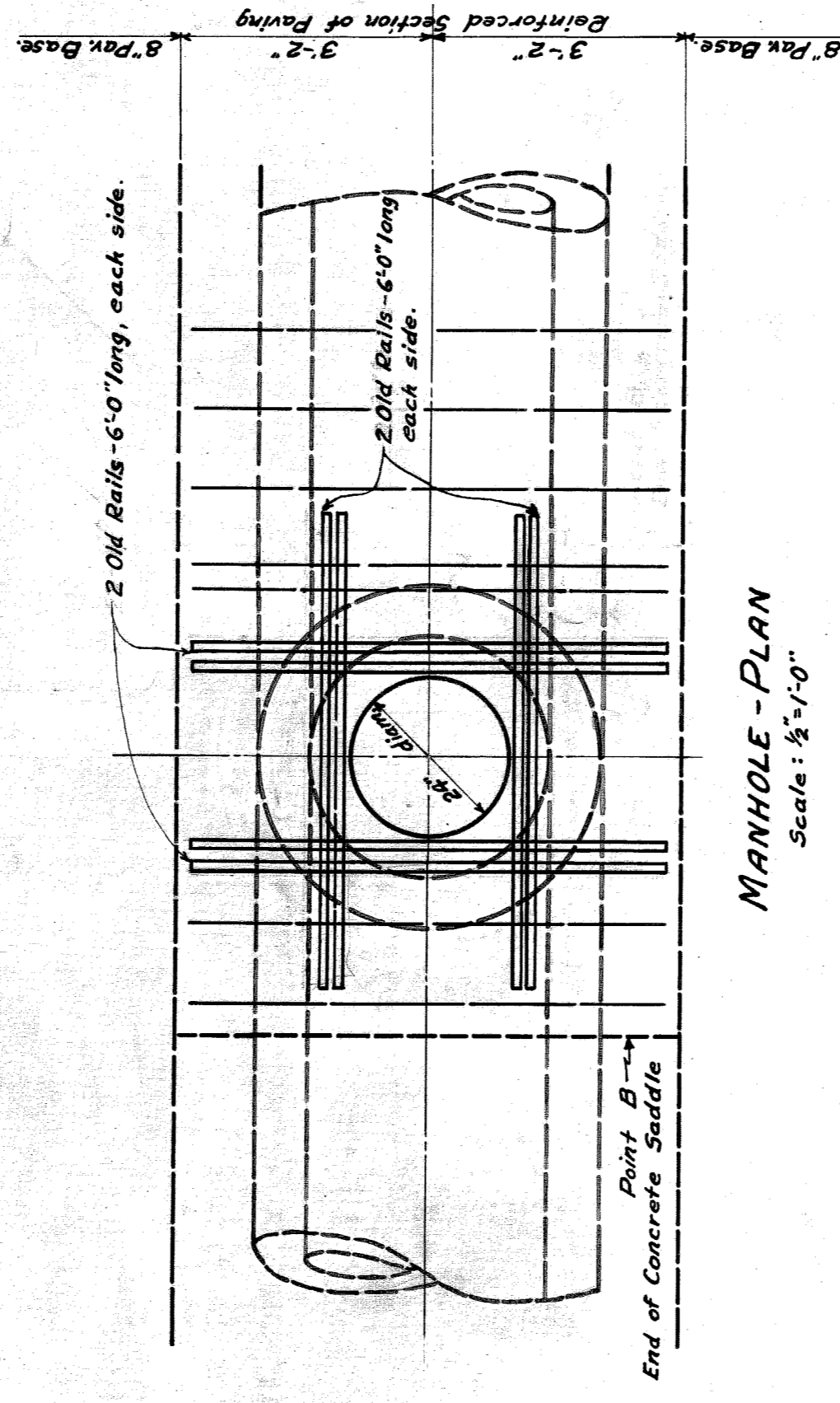
LONGITUDINAL SECTION
 HOR. ONE INCH = 40 FEET.
 VER. ONE INCH = 10 FEET.

CITY ENGINEERS OFFICE
 GRADE, SEPARATIONS & BRIDGES
 Case A Drawn 4 Nov 13-5
 CITY ENGINEER'S OFFICE
 DRAWN BY J.W. REID, NOV. 13, 1913.

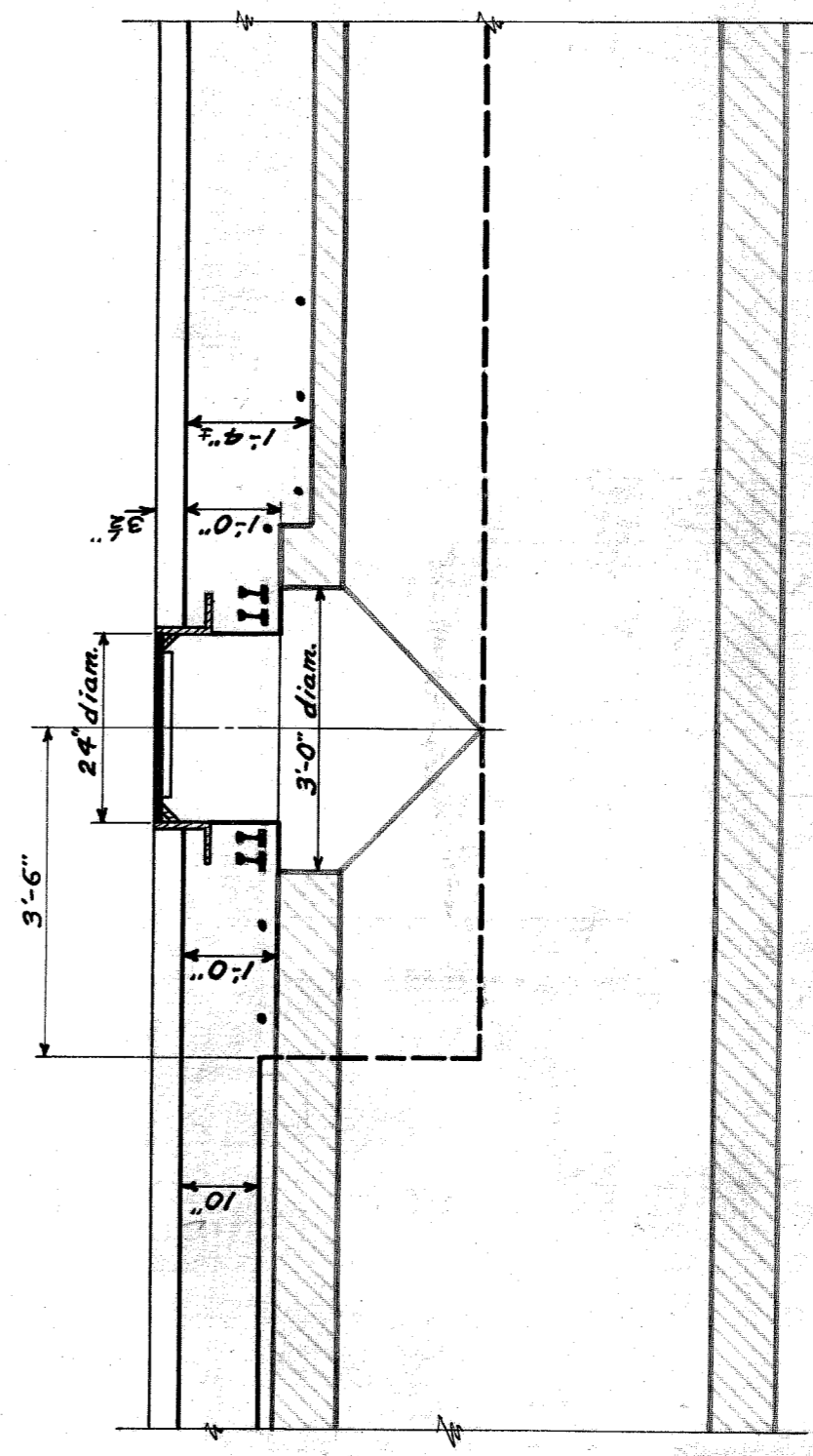
File XU962
 A-1 ZI-5



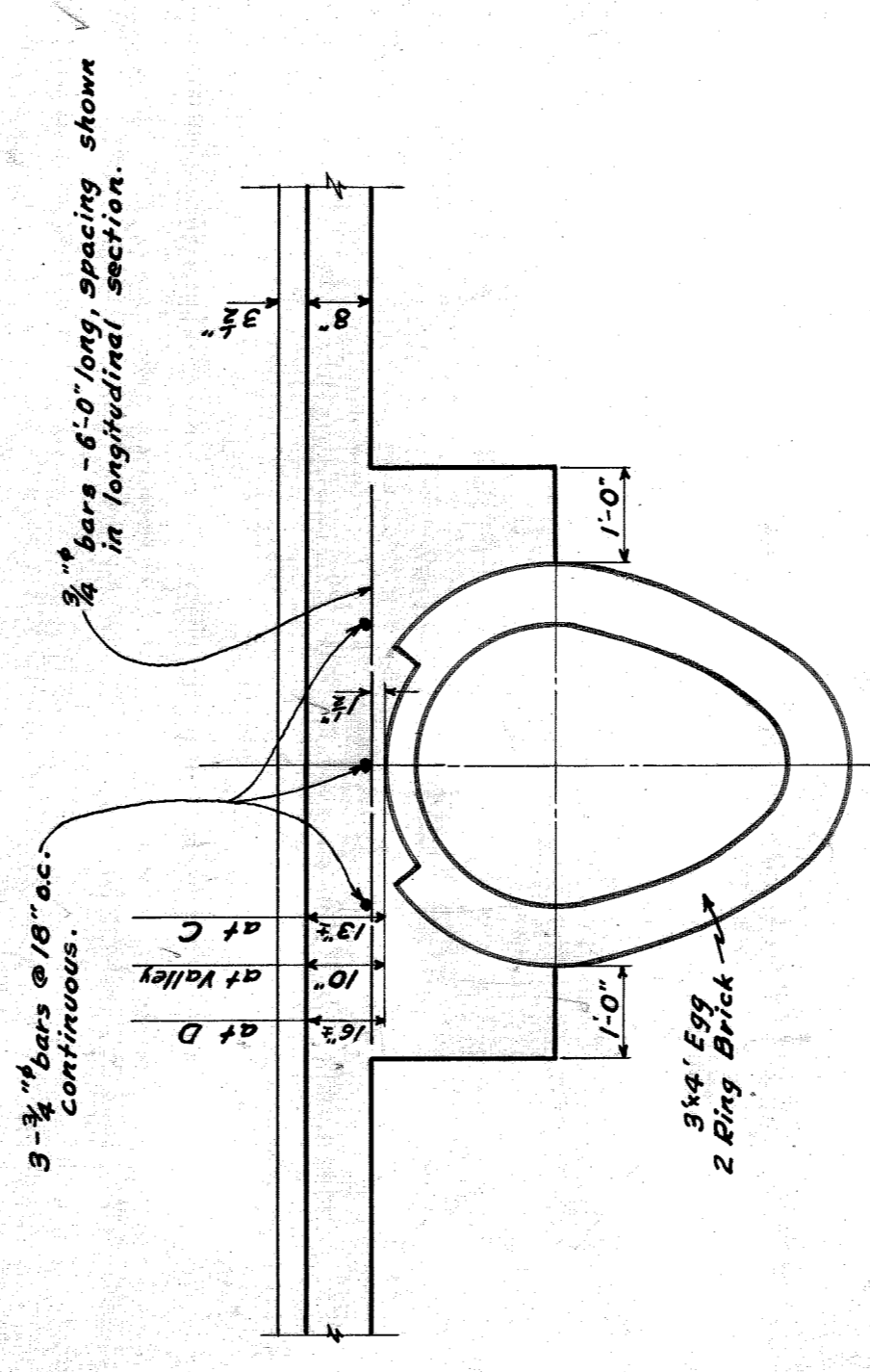
LONGITUDINAL SECTION
 Scale: Horizontal 1" = 10', Vertical 1" = 2'



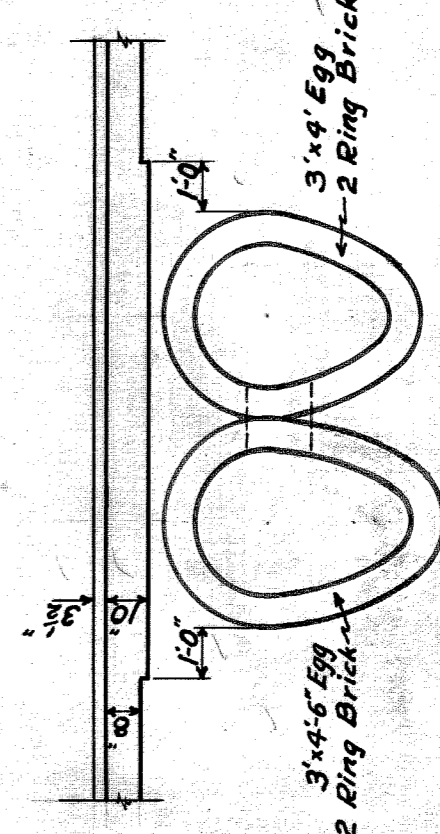
MANHOLE-PLAN
 Scale: 1/2" = 1'-0"



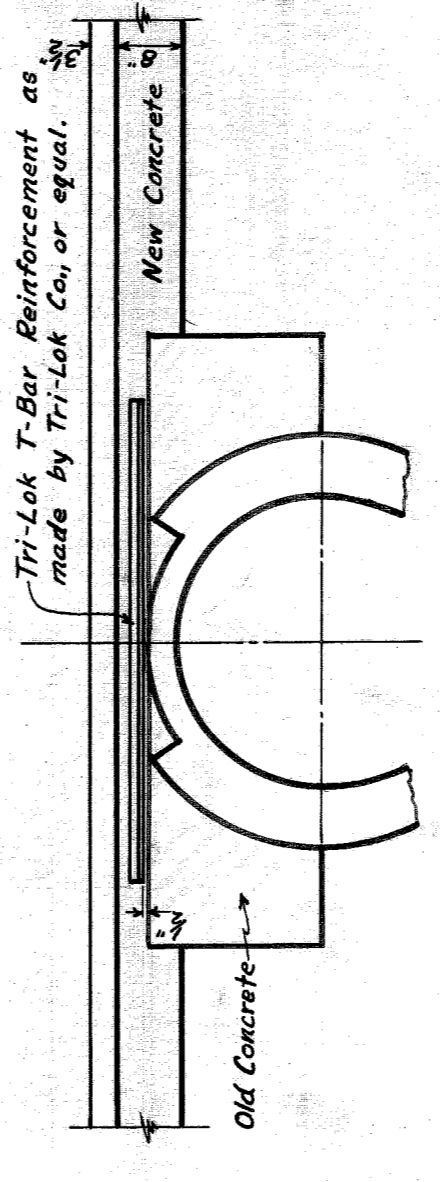
SECTION THRU MANHOLE
 Scale: 1/2" = 1'-0"



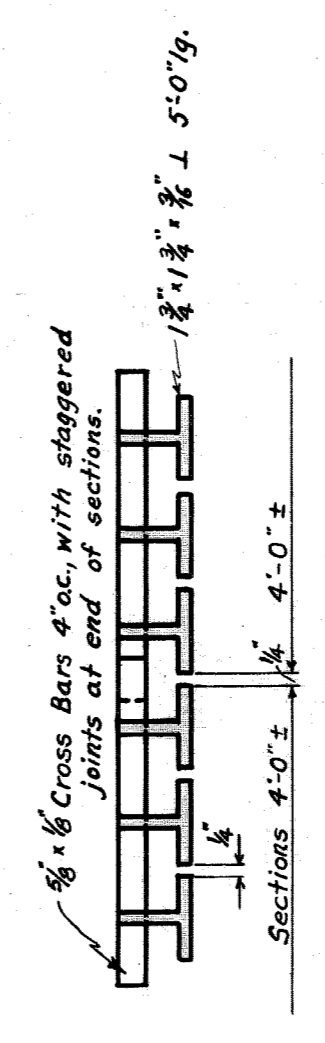
SECTION BETWEEN POINTS B & C
 Scale: 1/2" = 1'-0"
 EXCEPT SECTION E TO G.



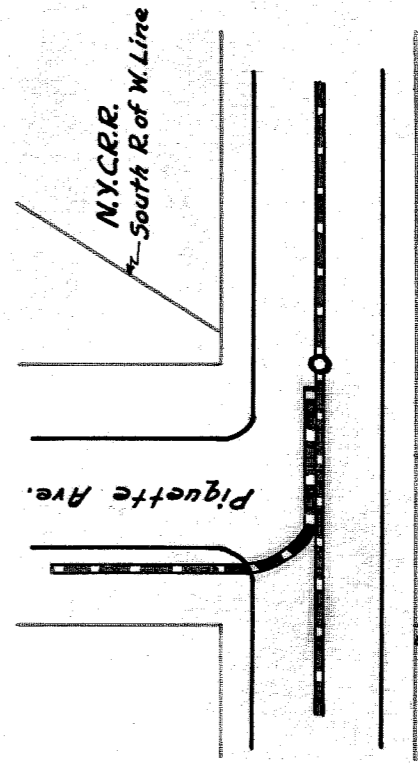
SECTION A-A
 Scale: 1/2" = 1'-0"



SECTION BETWEEN POINTS E & G.

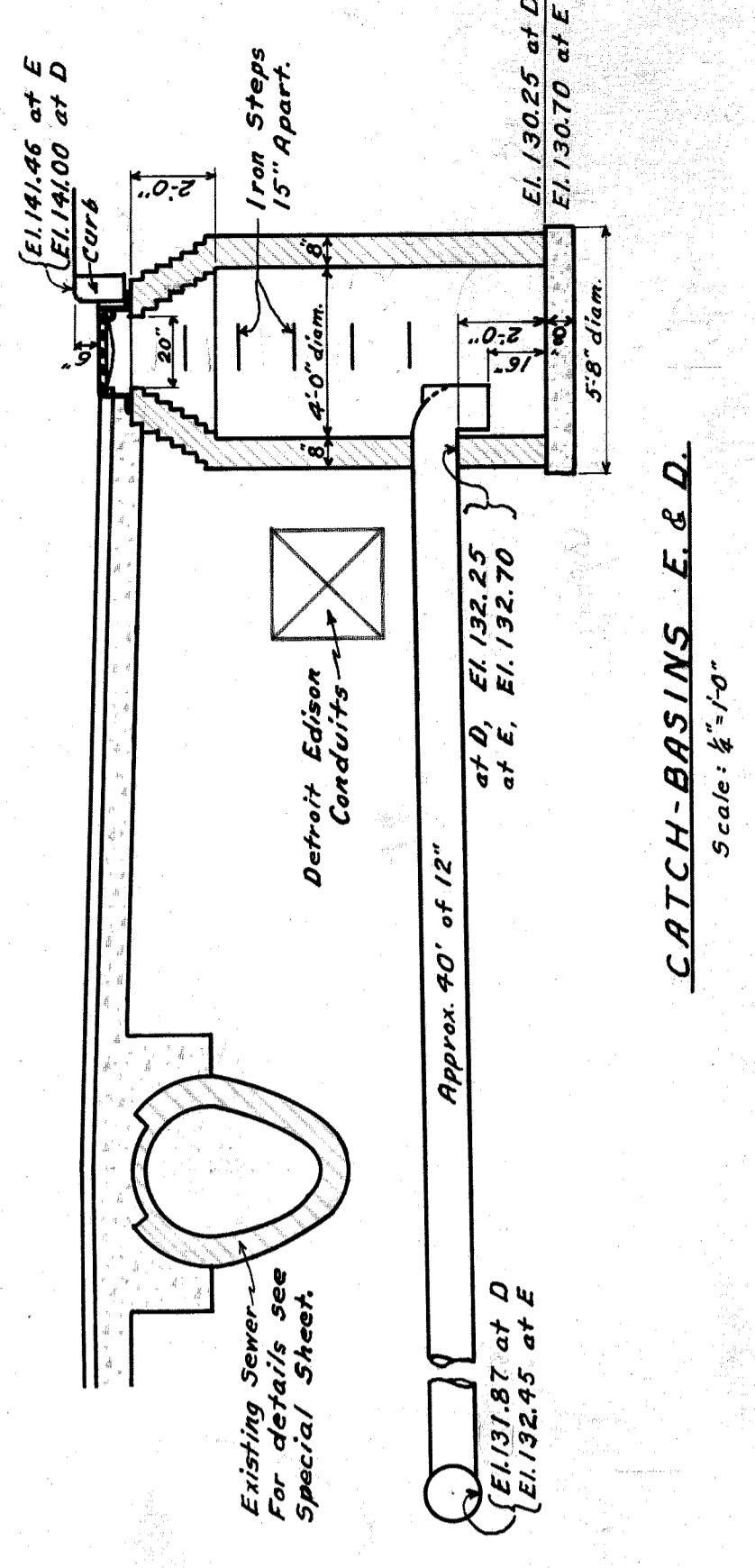


DETAILS OF T-BAR REINFORCING

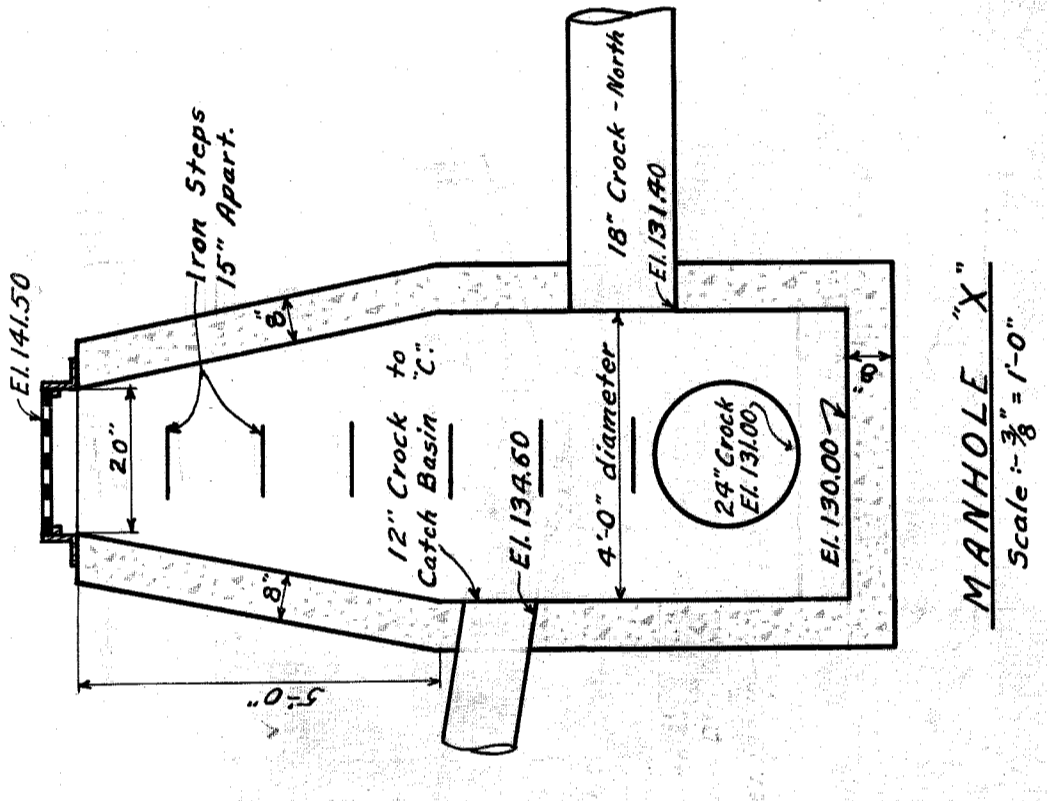


PLAN AT INTERSECTION OF EXISTING SEWERS.
 10' Pavement base to extend one foot on each side of outside of sewer, as shown in shaded section.

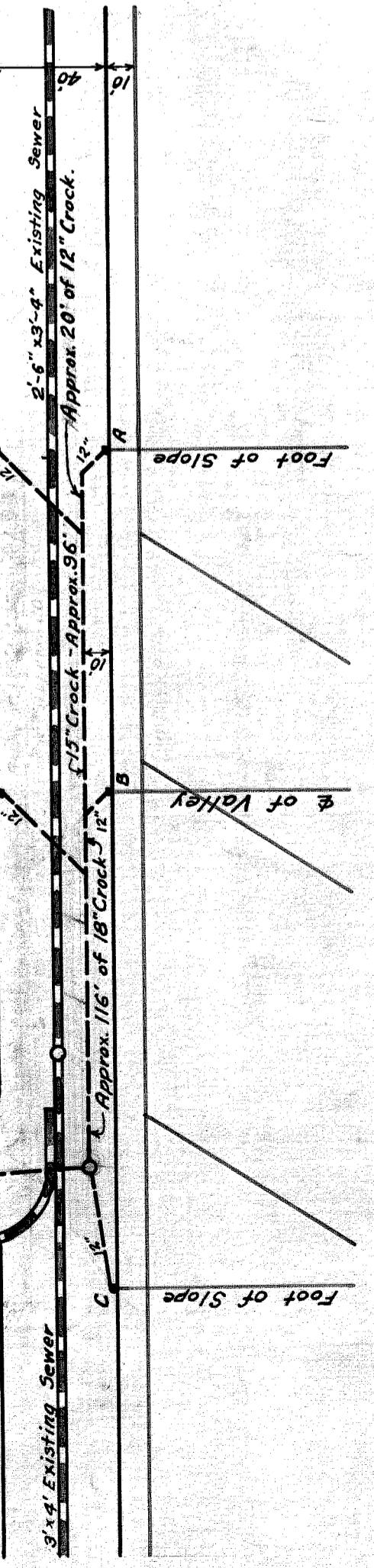
CITY OF DETROIT
 DEPARTMENT OF PUBLIC WORKS
 OFFICE OF CITY ENGINEER
 DIVISION OF GRADE SEPARATION & BRIDGES
RUSSELL STREET
 REINFORCED SLAB OVER SEWER - DETAILS
 Scale: as shown.
 Drawn by J.F.H.
 Checked by O.B.
 May 1928.
 Revised April 16, 1929
 Sect. between E & G details added.



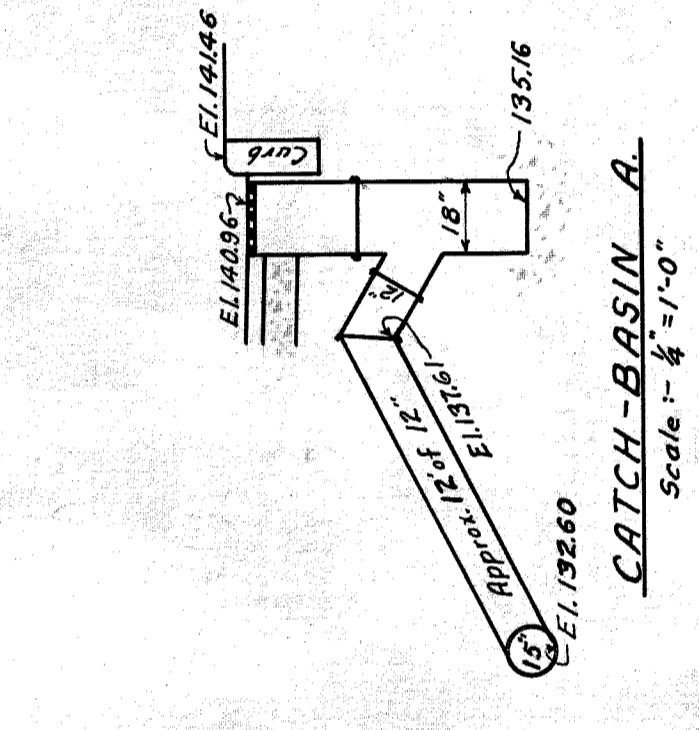
CATCH-BASINS E & D.
Scale: $\frac{1}{4}'' = 1'-0''$



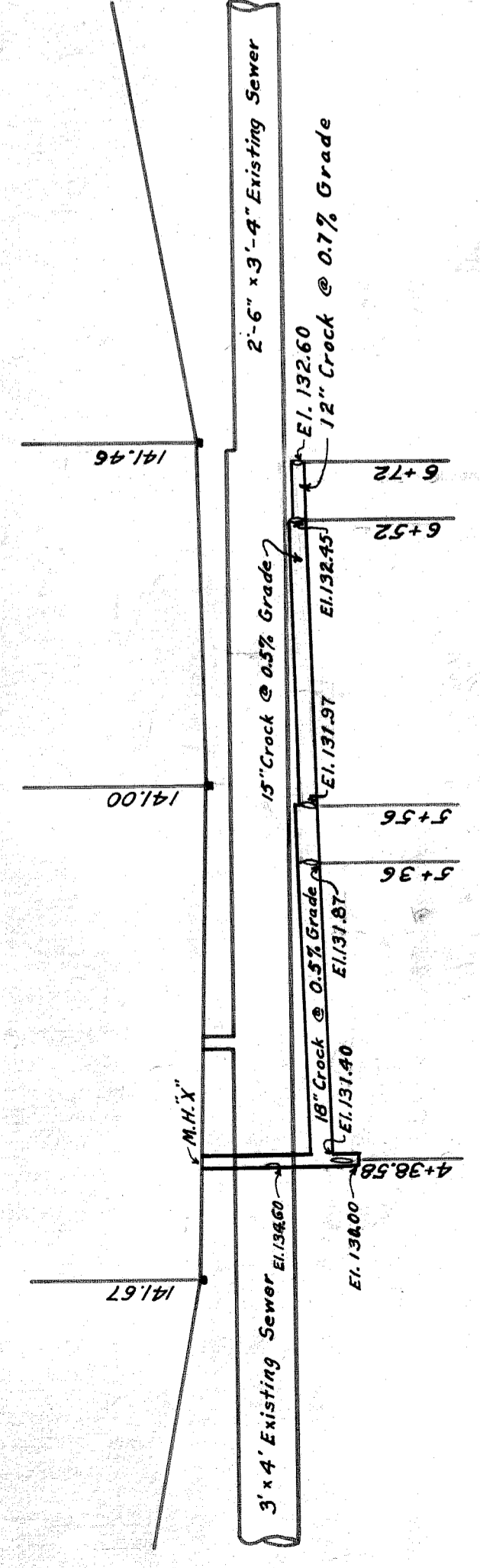
MANHOLE X.
Scale: $\frac{1}{8}'' = 1'-0''$



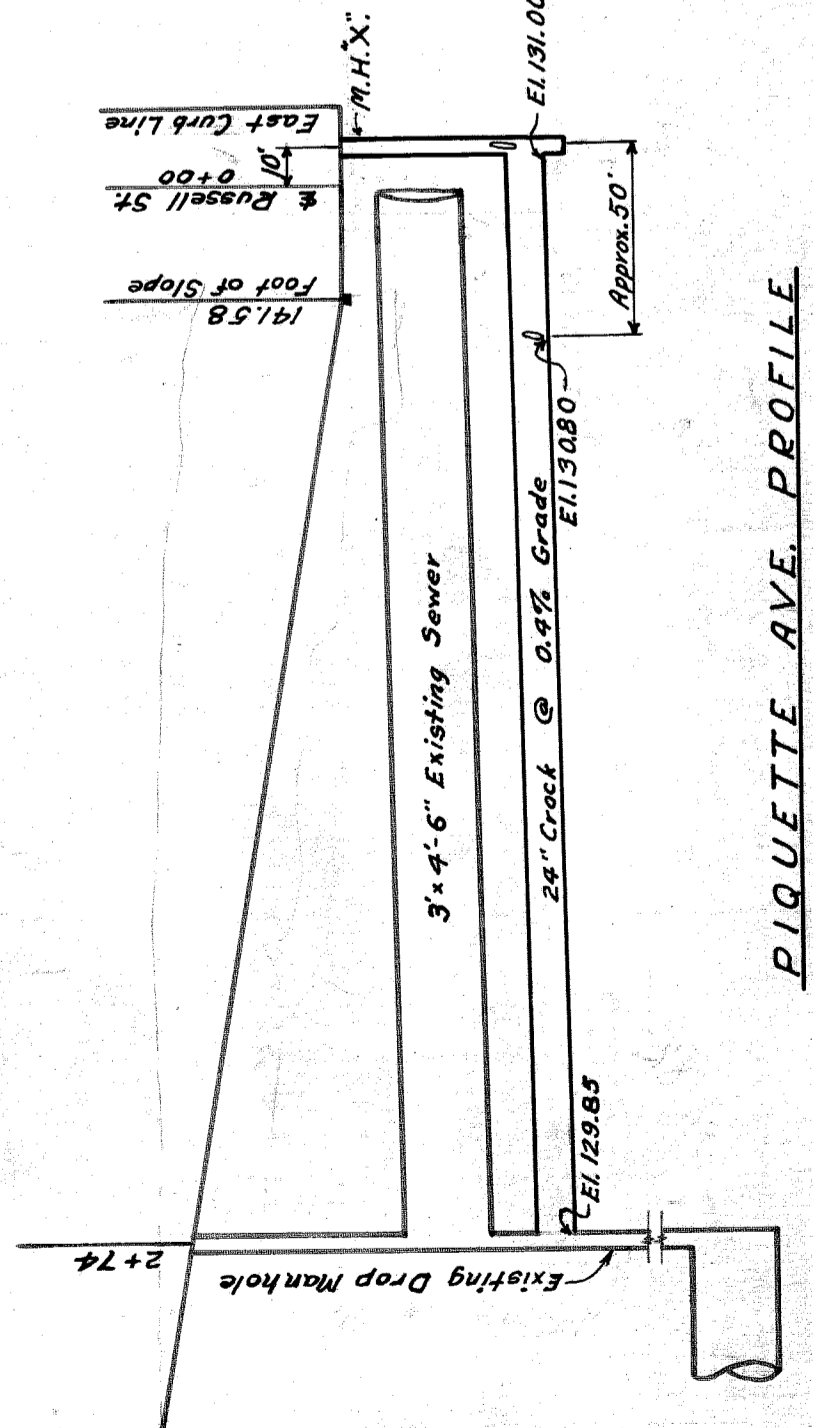
DRAINAGE PLAN
Scale: $1'' = 30'$



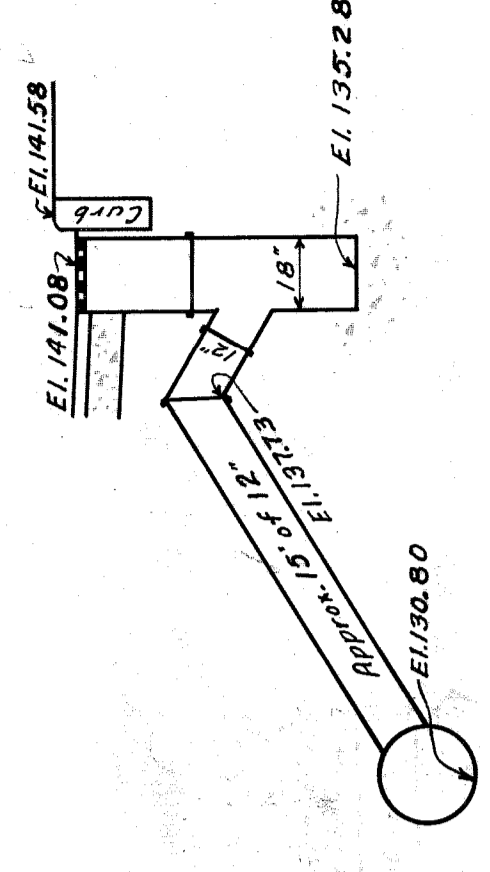
CATCH-BASIN A.
Scale: $\frac{1}{4}'' = 1'-0''$



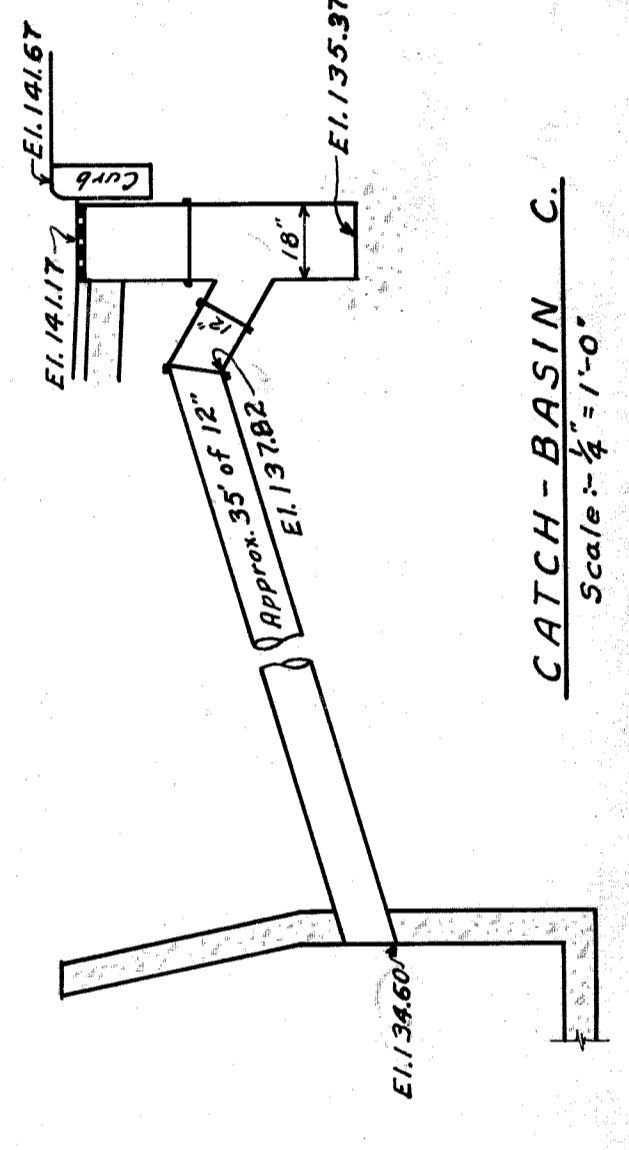
RUSSELL STREET PROFILE
Scale: Horiz. - $1'' = 50'$
Vert. - $1'' = 10'$



PIQUETTE AVE. PROFILE
Scale: Horiz. - $1'' = 50'$
Vert. - $1'' = 10'$



CATCH-BASIN F.
Scale: $\frac{1}{4}'' = 1'-0''$



CATCH-BASIN C.
Scale: $\frac{1}{4}'' = 1'-0''$

NOTE: The 12" crack connections between the catch-basins A, B, C, F & G and the lateral sewer shall be encased in 4 inches of 1:3:6 concrete, to insure against displacement.

Approved: *[Signature]*
Engineer - Sewer Division
City Engineer *[Signature]*

CITY OF DETROIT
DEPARTMENT OF PUBLIC WORKS
OFFICE OF CITY ENGINEER
DIVISION OF GRADE SEPARATION & BRIDGES
RUSSELL STREET
DRAINAGE PLAN - DETAILS
May 1928.

Scale: as shown.
Drawn by J.T.X.
Checked by R.J.
5/15/28

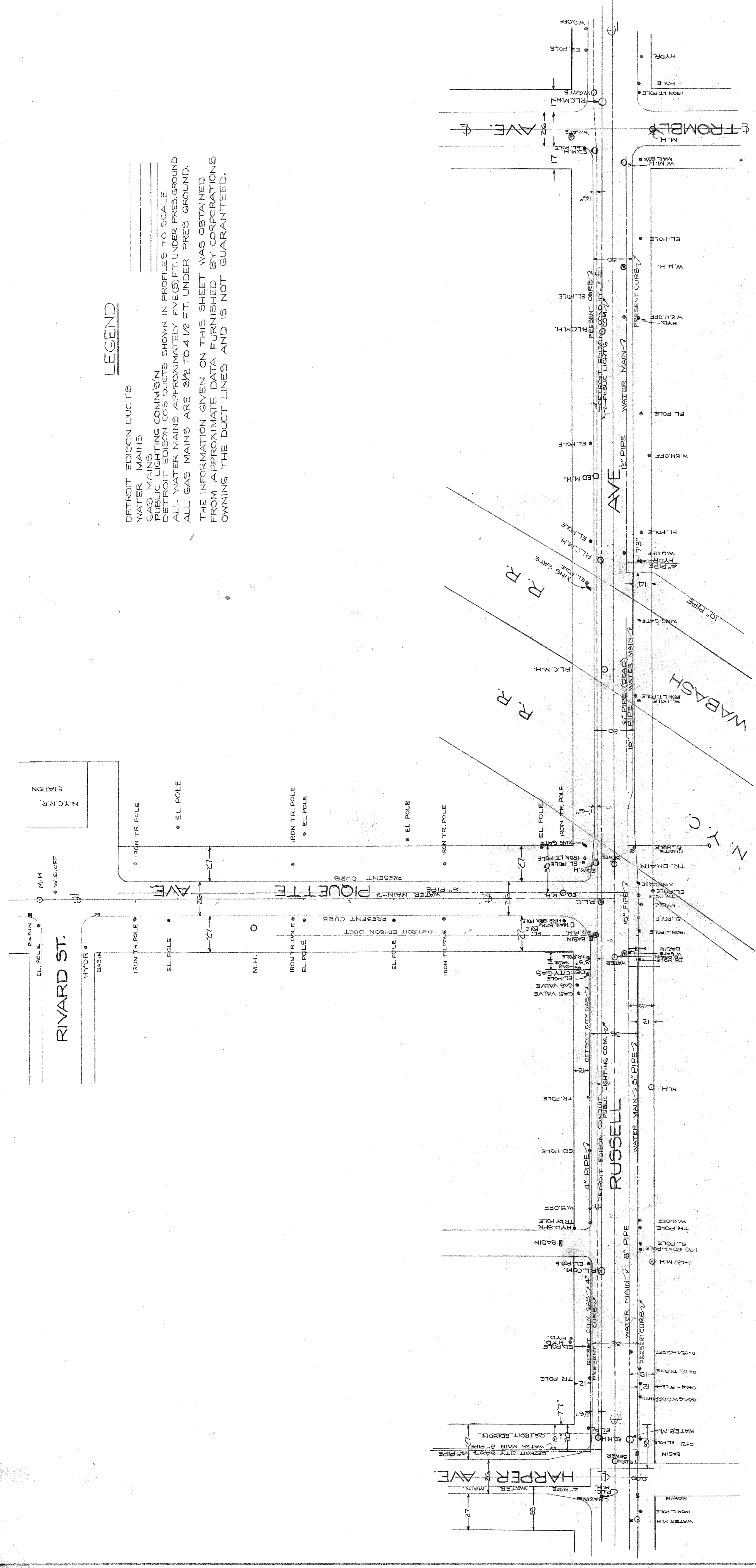
CITY OF DETROIT
 DEPARTMENT OF PUBLIC WORKS
 OFFICE OF CITY ENGINEER
 DIVISION OF GRADE SEPARATION & BRIDGES
RUSSELL STREET
 PLAN OF UTILITIES

Scale:
 Drawn by
 Checked by

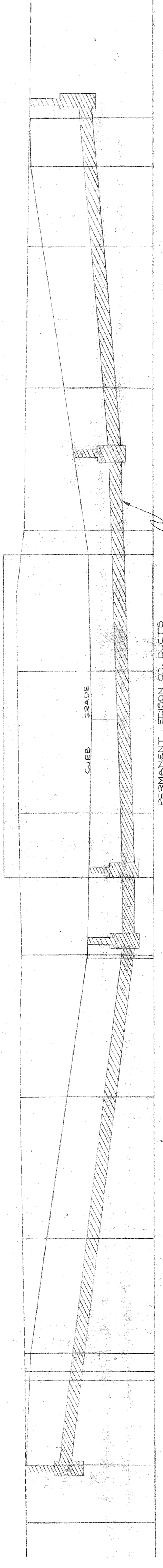
File XU96-5

LEGEND

- DETROIT EDISON DUCTS
 - WATER MAINS
 - GAS MAINS
 - PUBLIC LIGHTING COMMS'N
 - DETROIT EDISON CO'S DUCTS SHOWN IN PROFILES TO SCALE
 - ALL WATER MAINS APPROXIMATELY FIVE (5) FT. UNDER PRESENT GROUND.
 - ALL GAS MAINS ARE 3/2 TO 4 1/2 FT. UNDER PRESENT GROUND.
- THE INFORMATION GIVEN ON THIS SHEET WAS OBTAINED FROM APPROXIMATE DATA FURNISHED BY CORPORATIONS OWNING THE DUCT LINES AND IS NOT GUARANTEED.

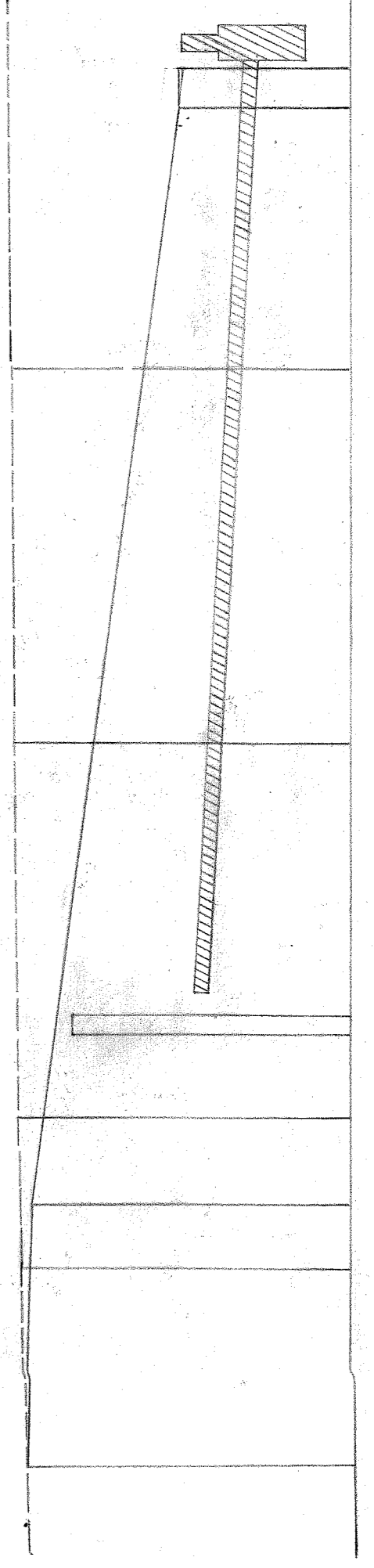


PLAN

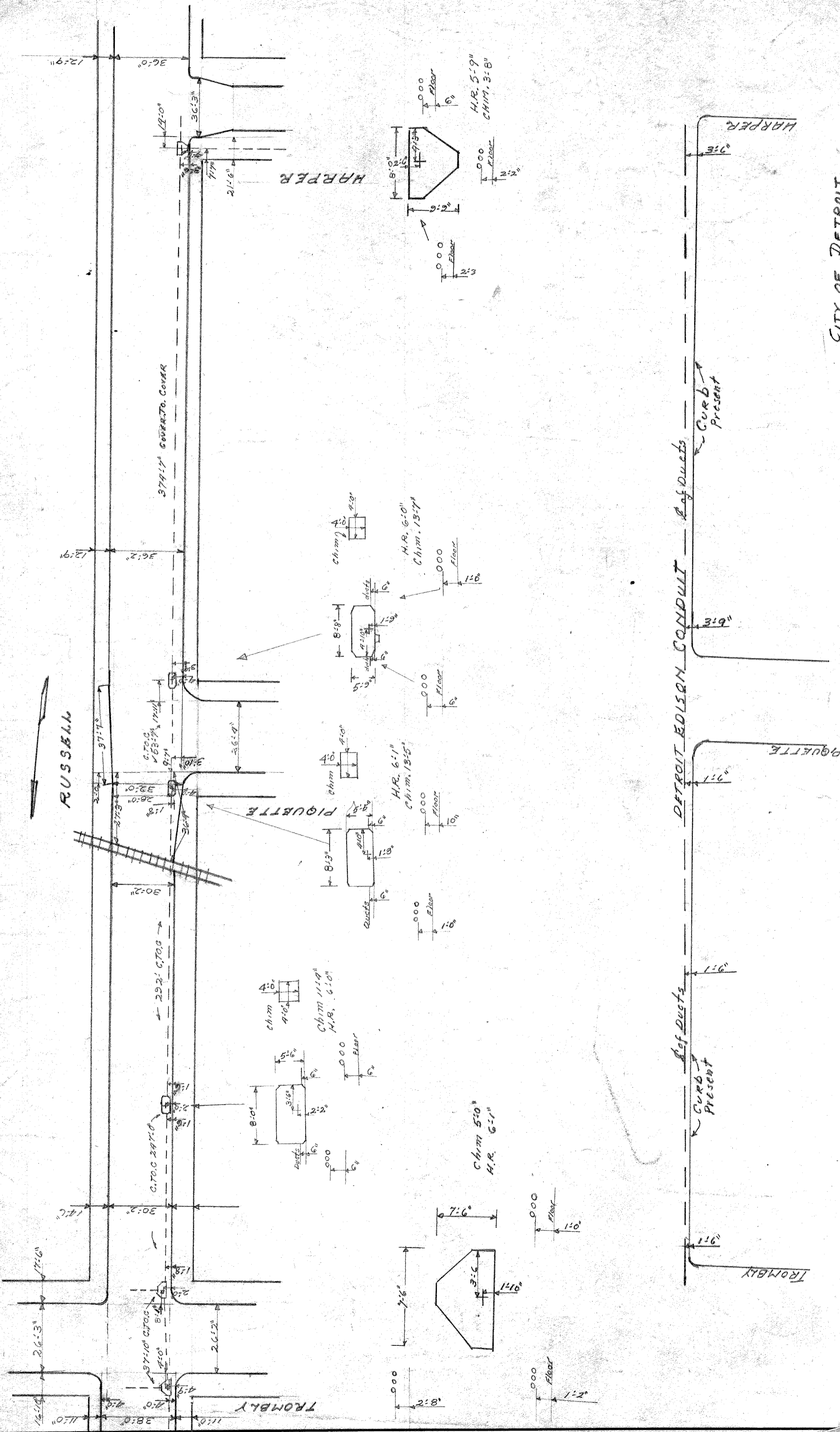


PROFILE OF RUSSELL ST.

SCALE: 1" = 40' HORIZ.
 1" = 10' VERT.



PROFILE OF PIQUETTE AVE.



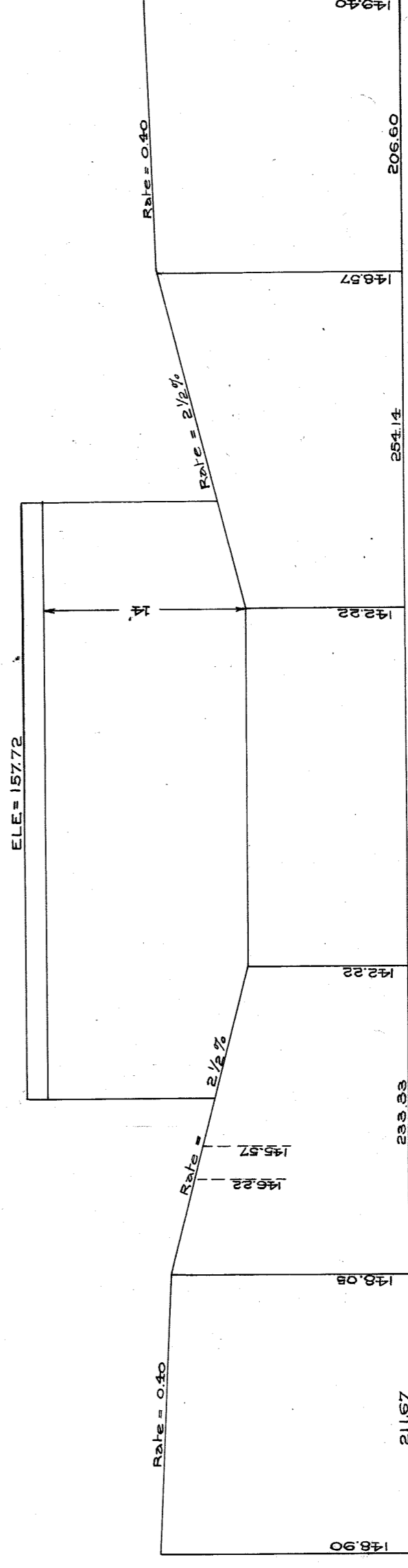
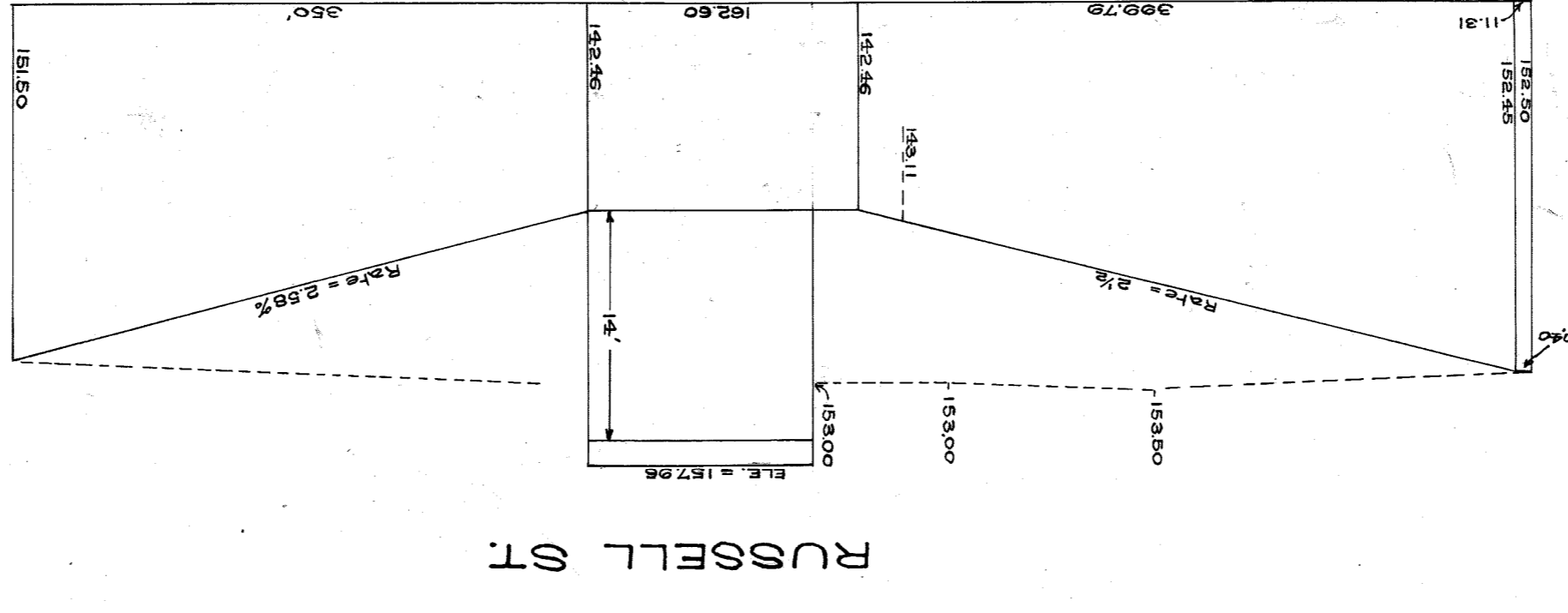
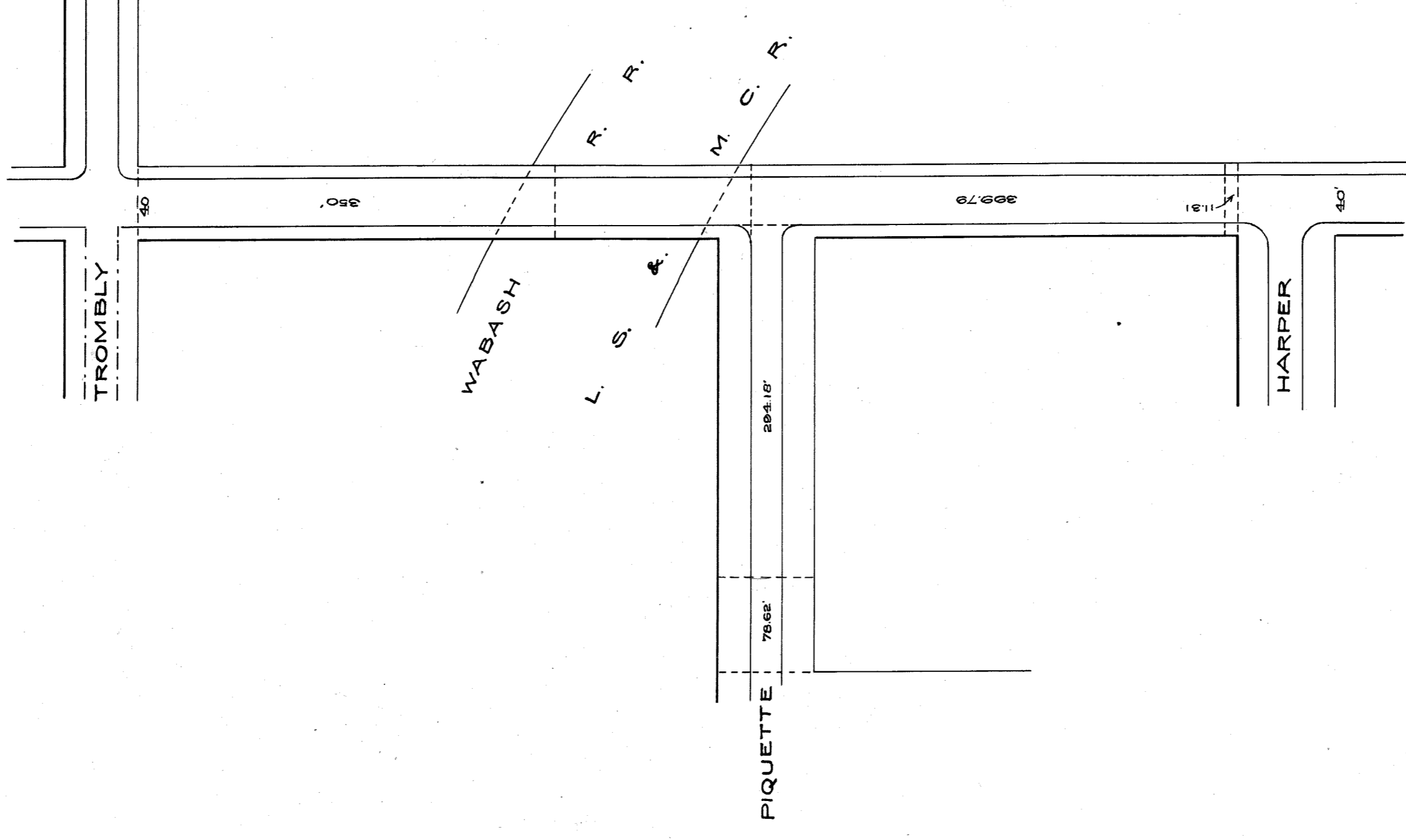
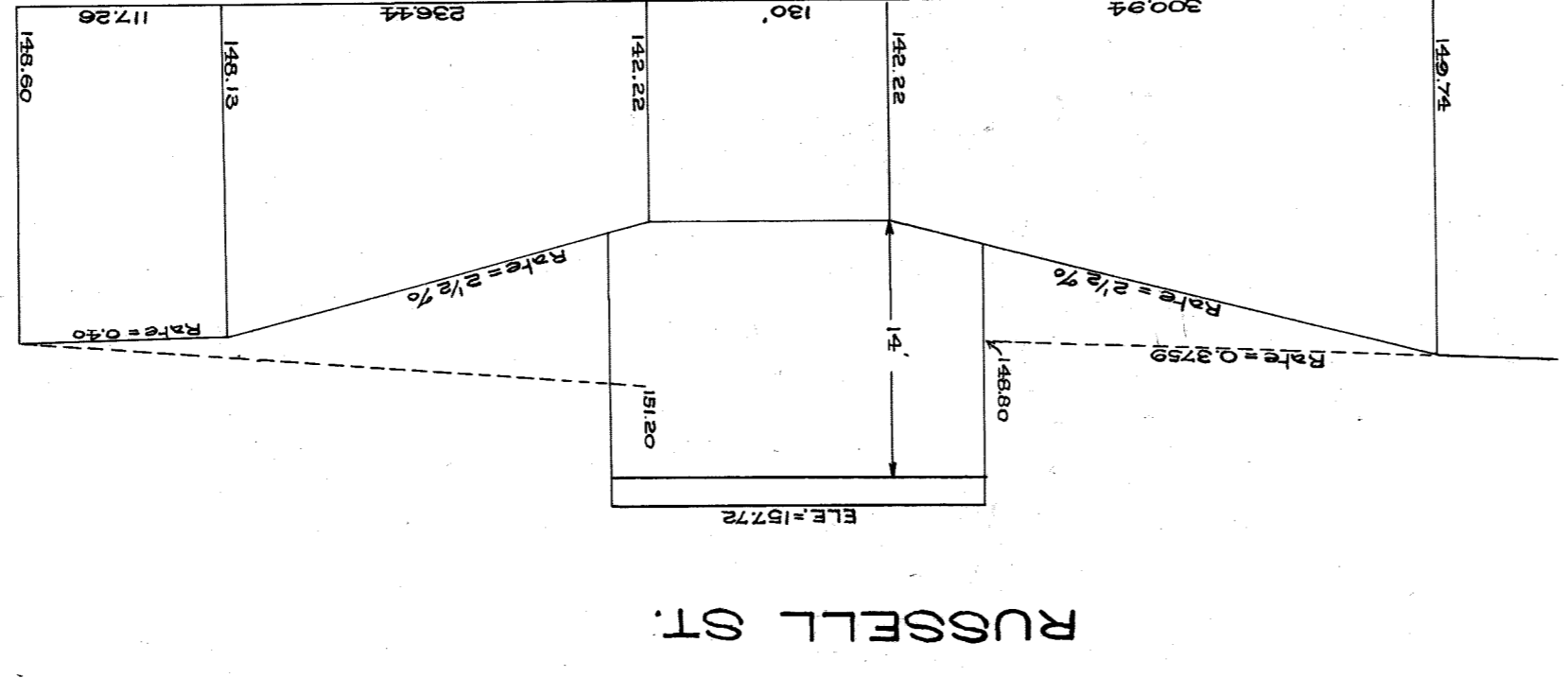
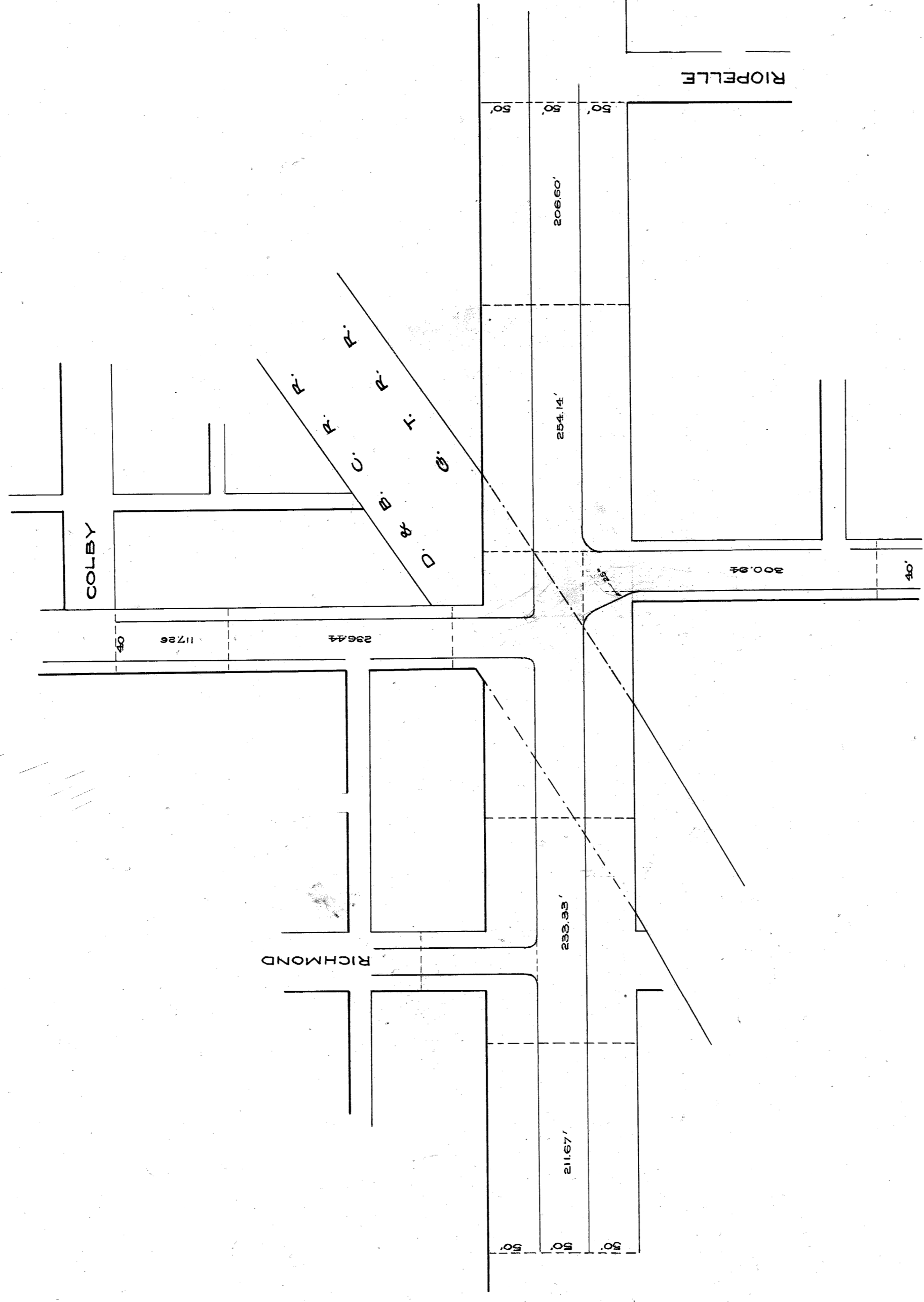
CITY OF DETROIT
Grade Separation Division

NOTE REVISIONS--RETURN TO DRAFTING ROOM ALL PRINTS MADE PREVIOUS TO LAST REVISION

DATE	O.K.	APPROVED	USE DIMENSIONS ONLY
DATE	O.K.	APPROVED	USE DIMENSIONS ONLY

CONDUIT LOCATIONS IN RUSSELL
From Harper to Trombly
THE DETROIT EDISON COMPANY
DETROIT, MICH.
SCALE -1-FT. PRINTED
U-377-A 57

File XU96-6



GRAND BOULEVARD EAST.

CITY ENGINEER'S OFFICE
GRADE SEPARATION & BRIDGES

Sheet A Department 4 No. Z-60

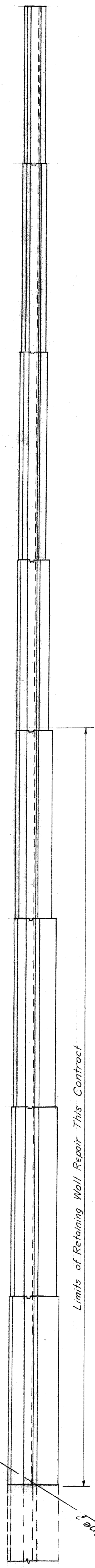
CITY ENGINEER'S OFFICE.

HOR. SCALE, ONE INCH = 100 FT.
VER. " " " = 10 "

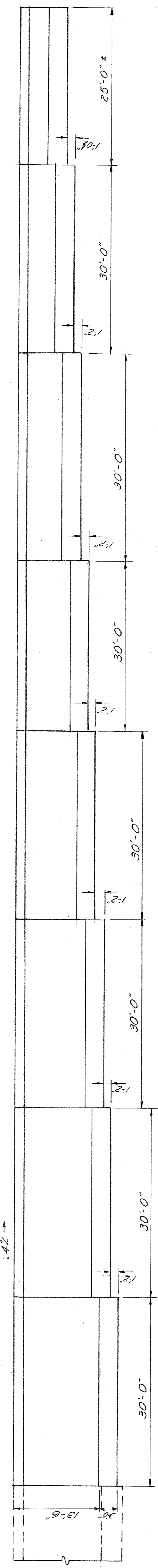
DRAWN BY J.W. REID, APRIL 12, 1905.

File XU96-8
A-4 II 60

10

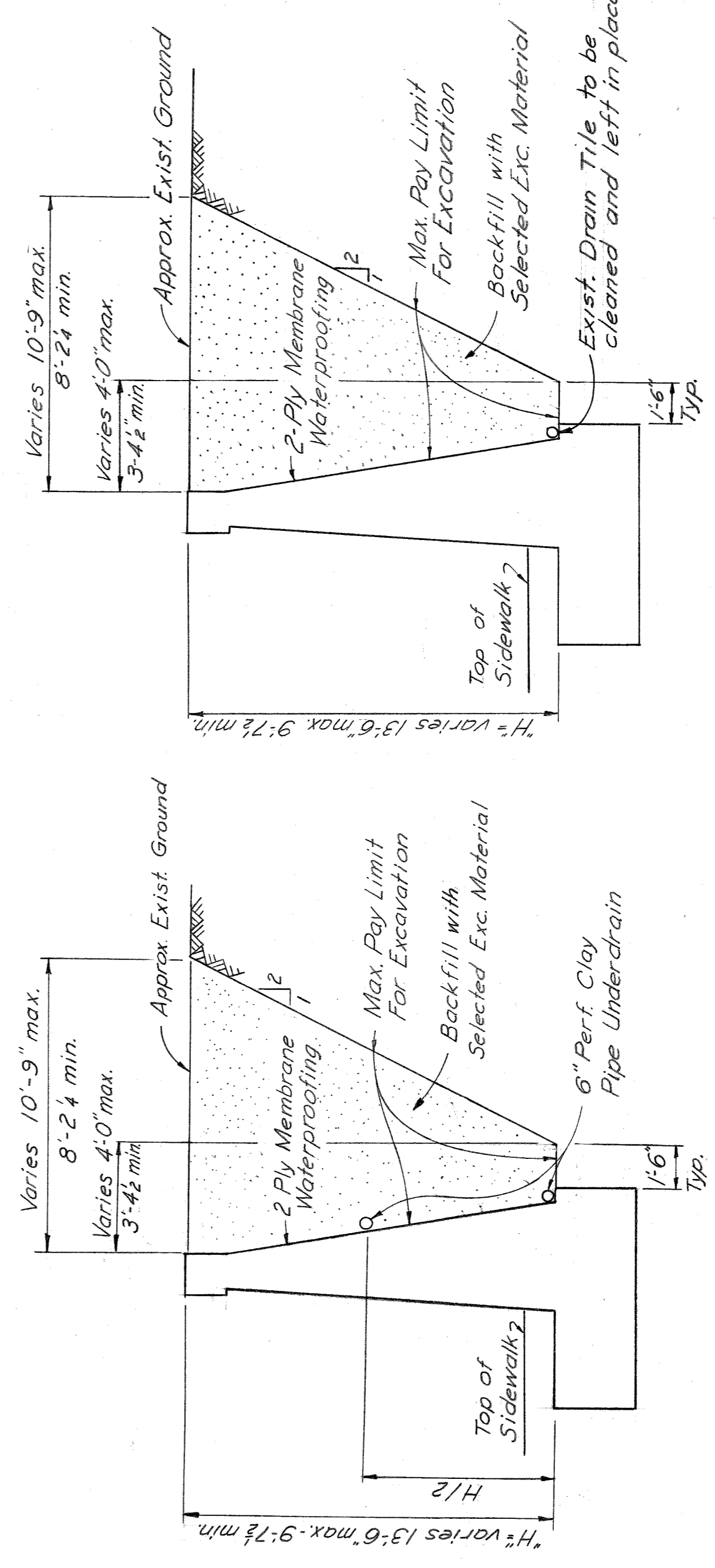


PLAN
Scale: $\frac{1}{8}'' = 1'$



ELEVATION
Scale: $\frac{1}{8}'' = 1'$

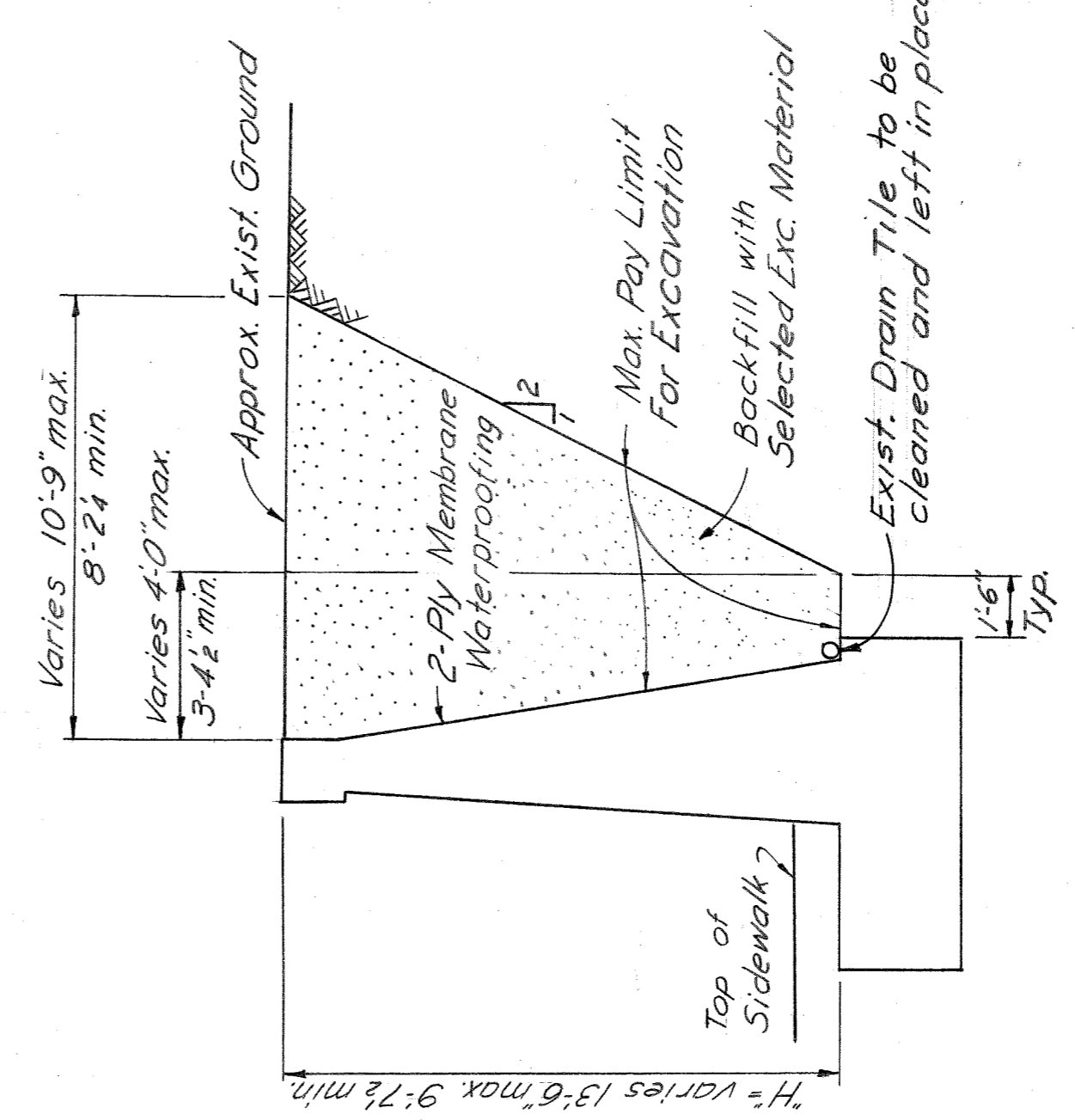
NOTE:
 Scheme 1-A - Includes waterproofing of rear face of wall, installation of 2'-0" perf. clay pipe underdrains behind the wall, and the construction of a sand filled french drain.
 Scheme 1-B - Identical to scheme 1-A except a M.H. at the location shown, and a sewer line to an existing C.B. is substituted for the french drain.
 Scheme 2 - Provides only for waterproofing the rear face of the retaining wall.



TYPICAL SECTION-RETAINING WALL
SCHEME-1
Scale $\frac{1}{4}'' = 1'-0''$

TABLE of QUANTITIES

Scheme 1-A			
Waterproofing	Sq. ft.	1410	
Excavated Mat'l.	Cu. yds.	330	
6" Perf. Clay Pipe	Lin. ft.	240	
Sand	Cu. yds.	20	



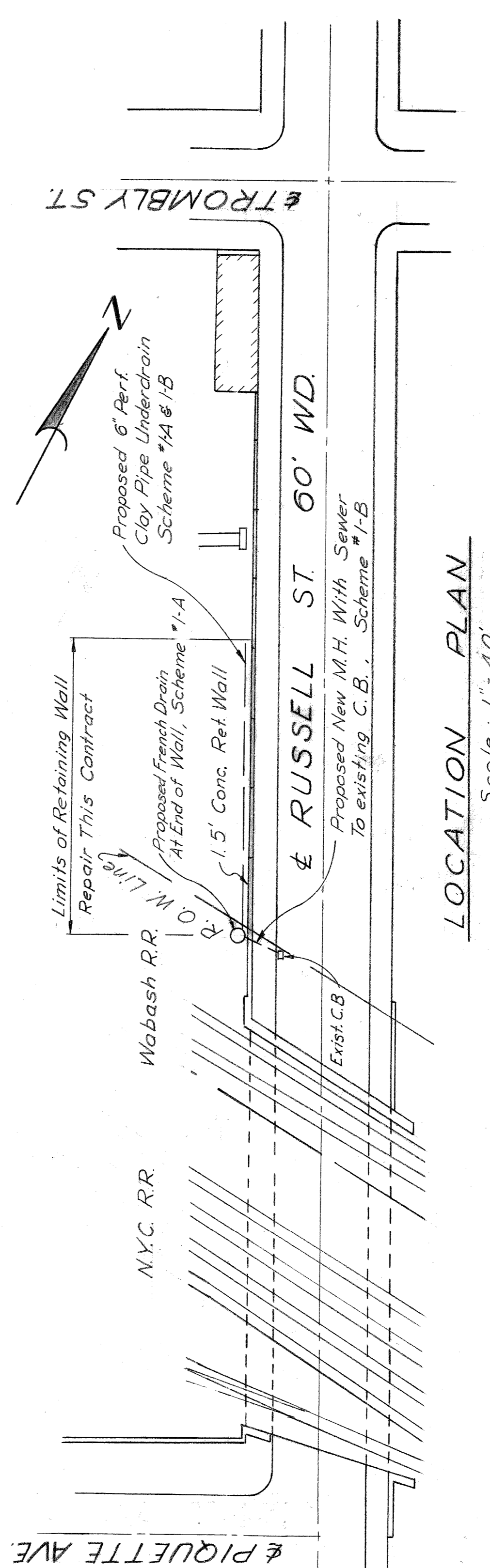
TYPICAL SECTION-RETAINING WALL
SCHEME-2
Scale $\frac{1}{4}'' = 1'-0''$

TABLE of QUANTITIES

Scheme 1-B			
Waterproofing	Sq. ft.	1410	
Excavated Mat'l.	Cu. yds.	358	
6" Perf. Clay Pipe	Lin. ft.	240	
Manhole	Ea.	1	
Sewer Pipe	Lin. ft.	15±	

TABLE of QUANTITIES

Scheme 2	
Waterproofing	Sq. ft. 1410
Excavated Mat'l.	Cu. yds. 308



LOCATION PLAN
Scale: $1'' = 40'$

RETAINING WALL REPAIR PLAN
 XU-96
 Drawn by: T. Baker
 Checked by: N. M. S. Learn
 Date: 7-61
 Date: 7-61