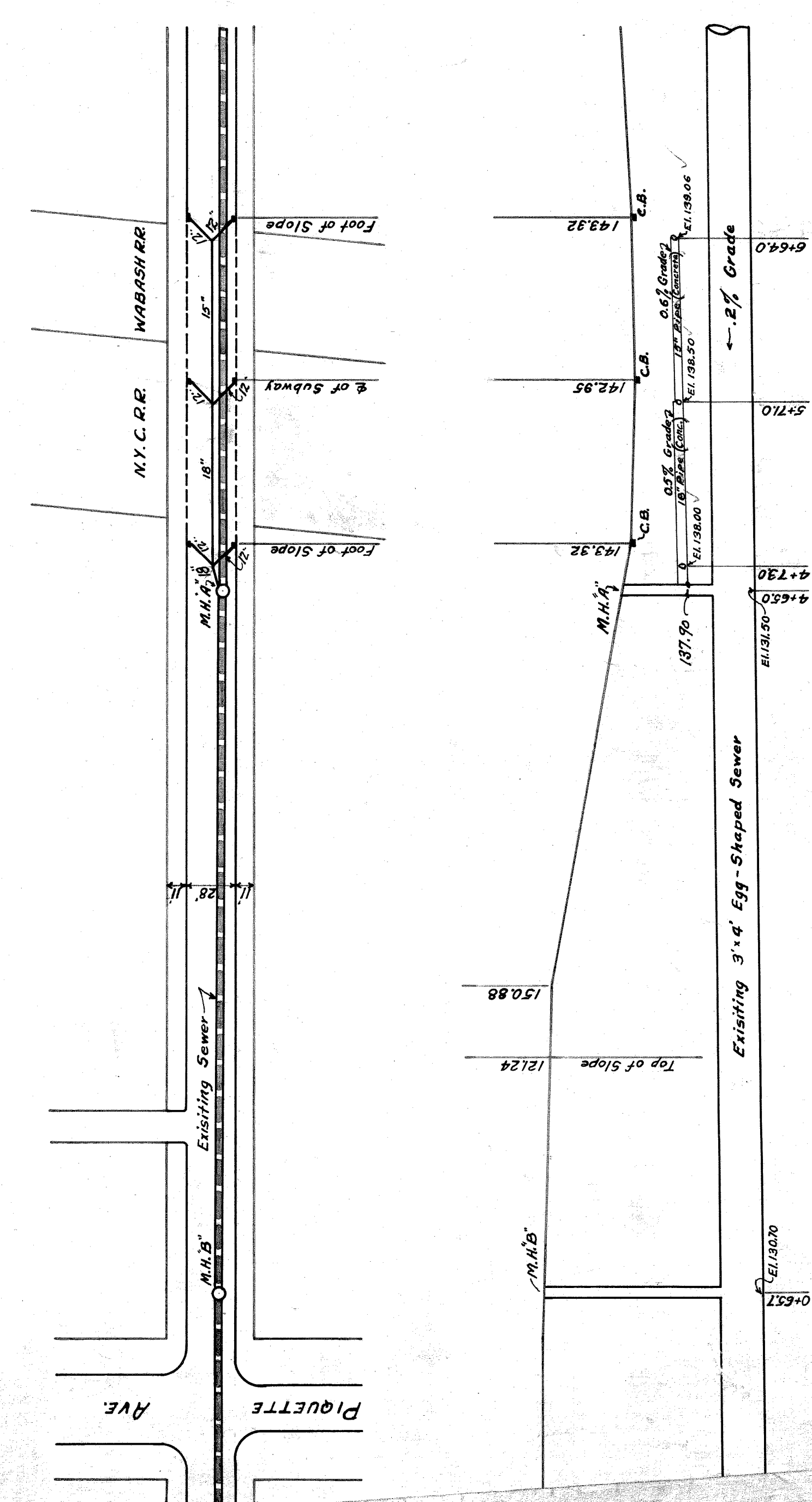
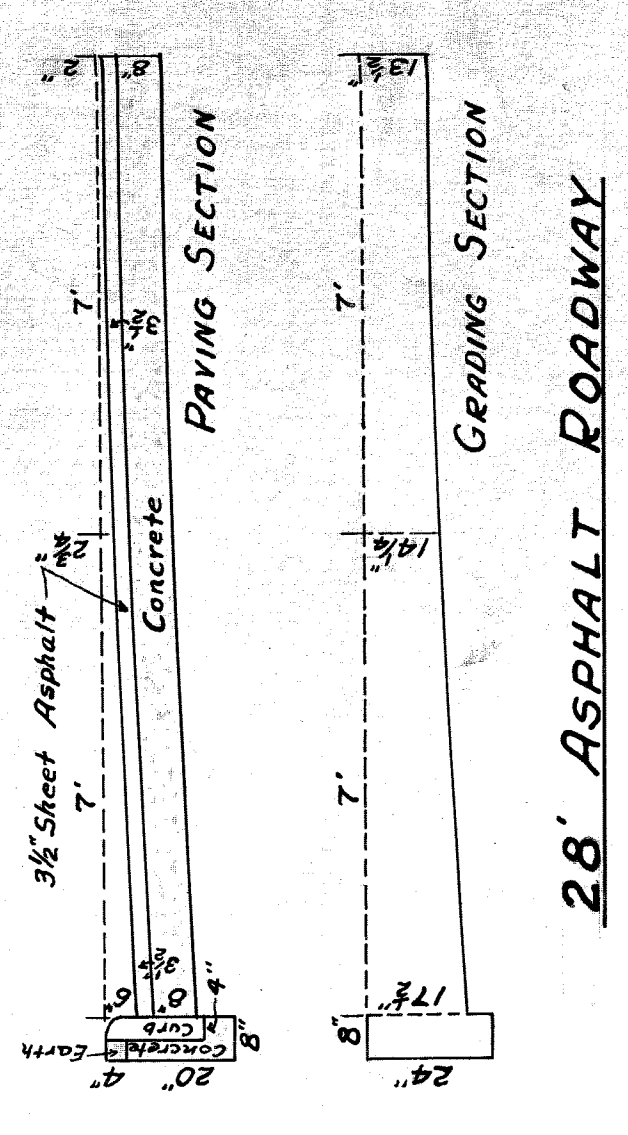


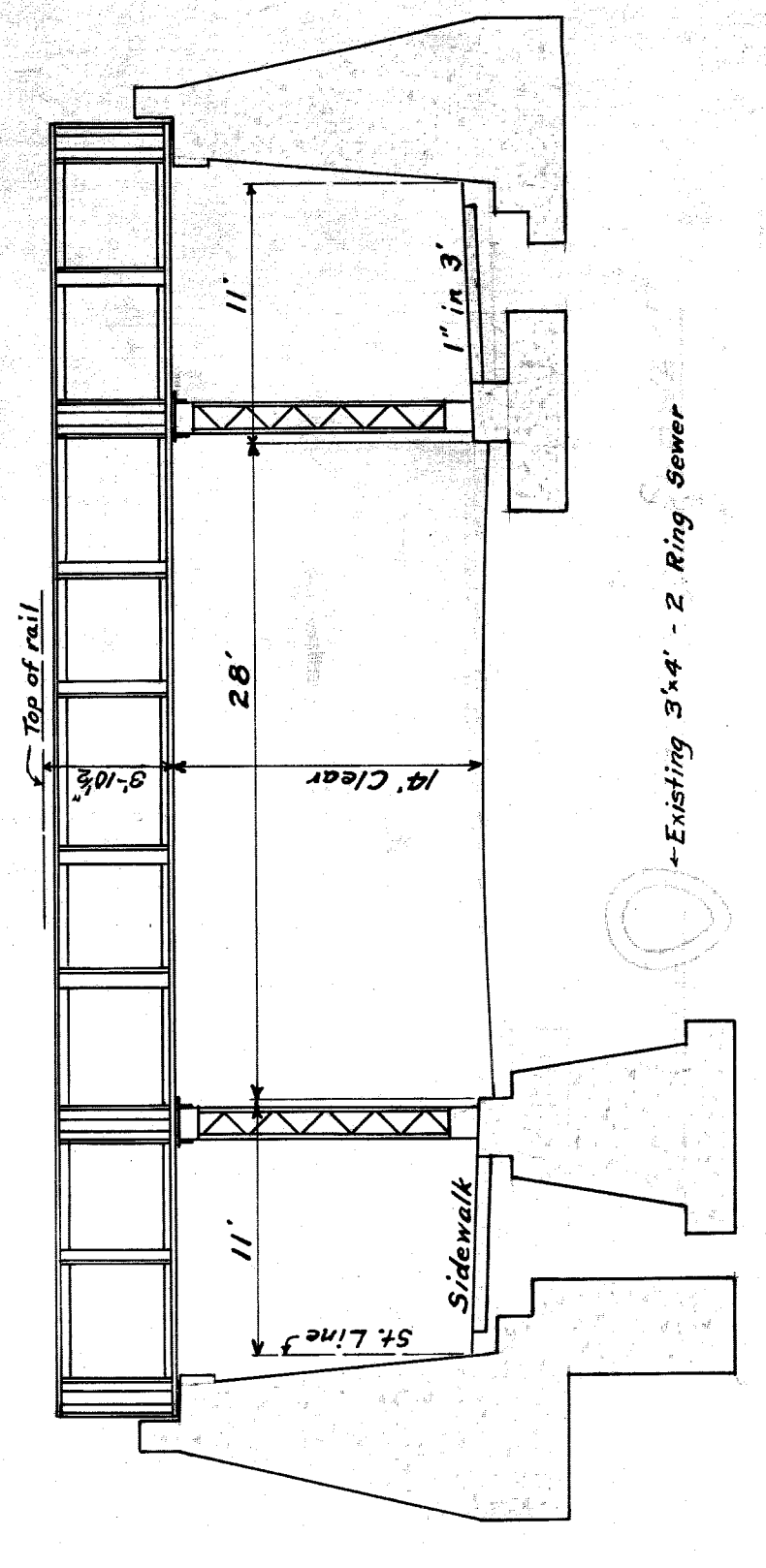
PROFILE ON HASTINGS STREET  
 Scales - Horiz. 1"=40', Vert. 1"=10'



HASTINGS ST. DRAINAGE PLAN & PROFILE  
 Scales - Horiz. 1"=60', Vert. 1"=10'



28' ASPHALT ROADWAY



CROSS SECTION OF SUBWAY  
 (N.Y.C. Bridge)

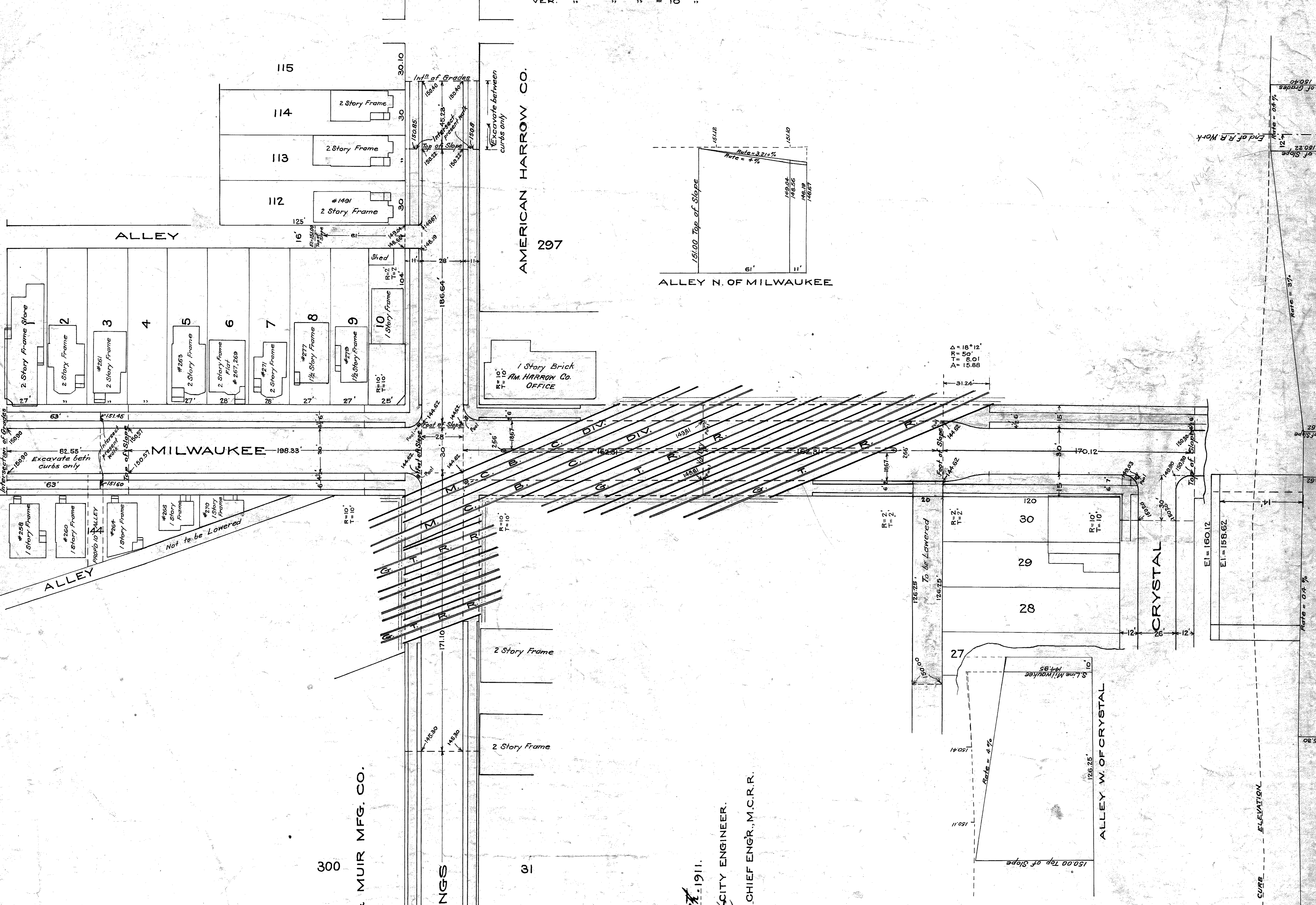
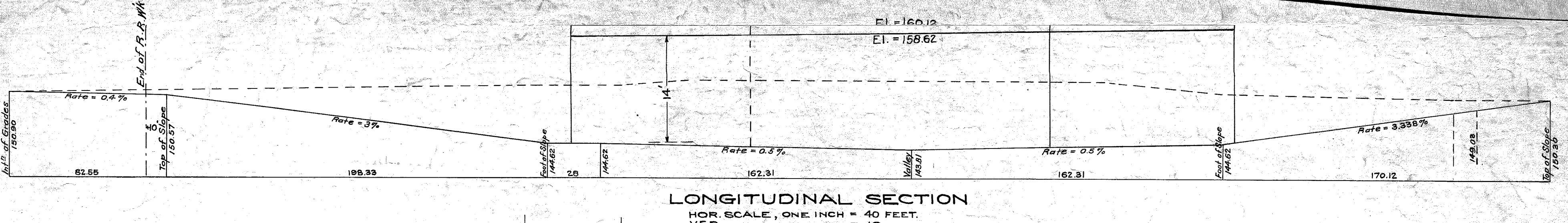
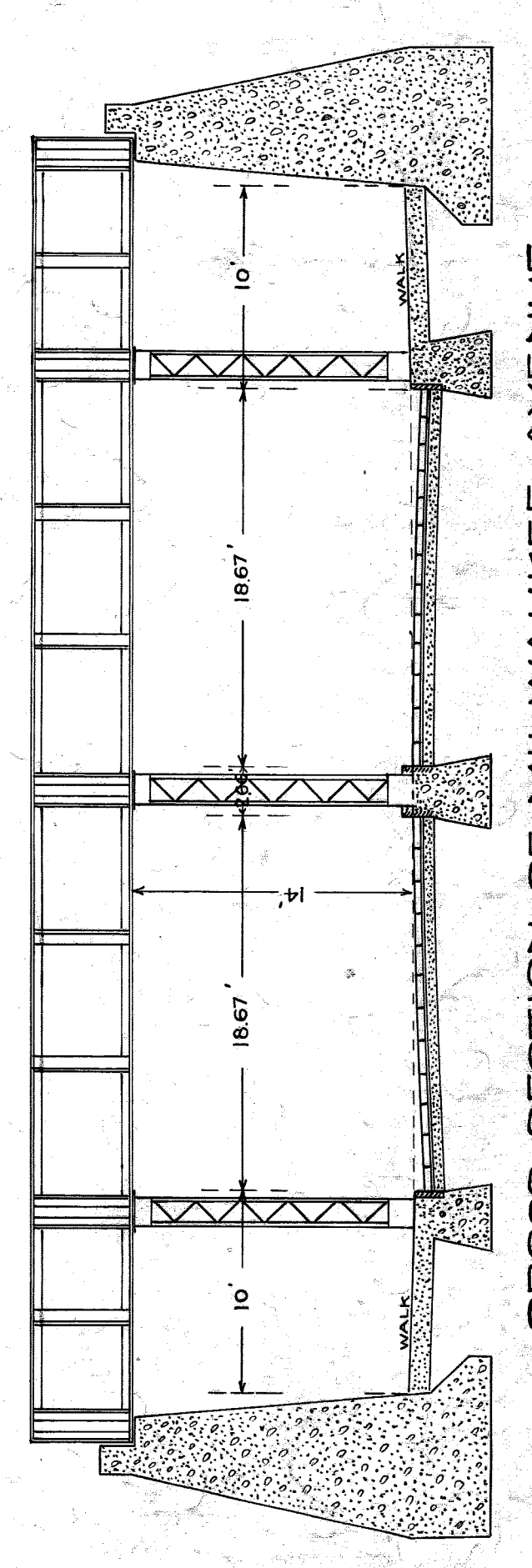
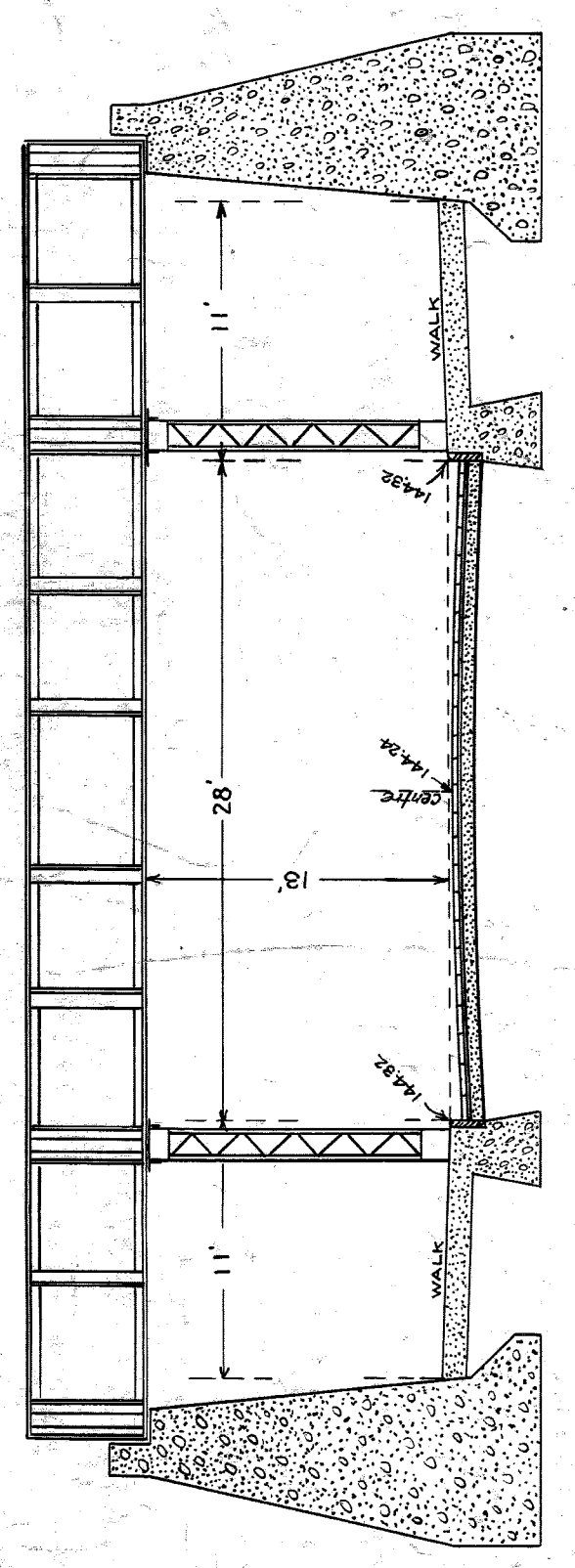
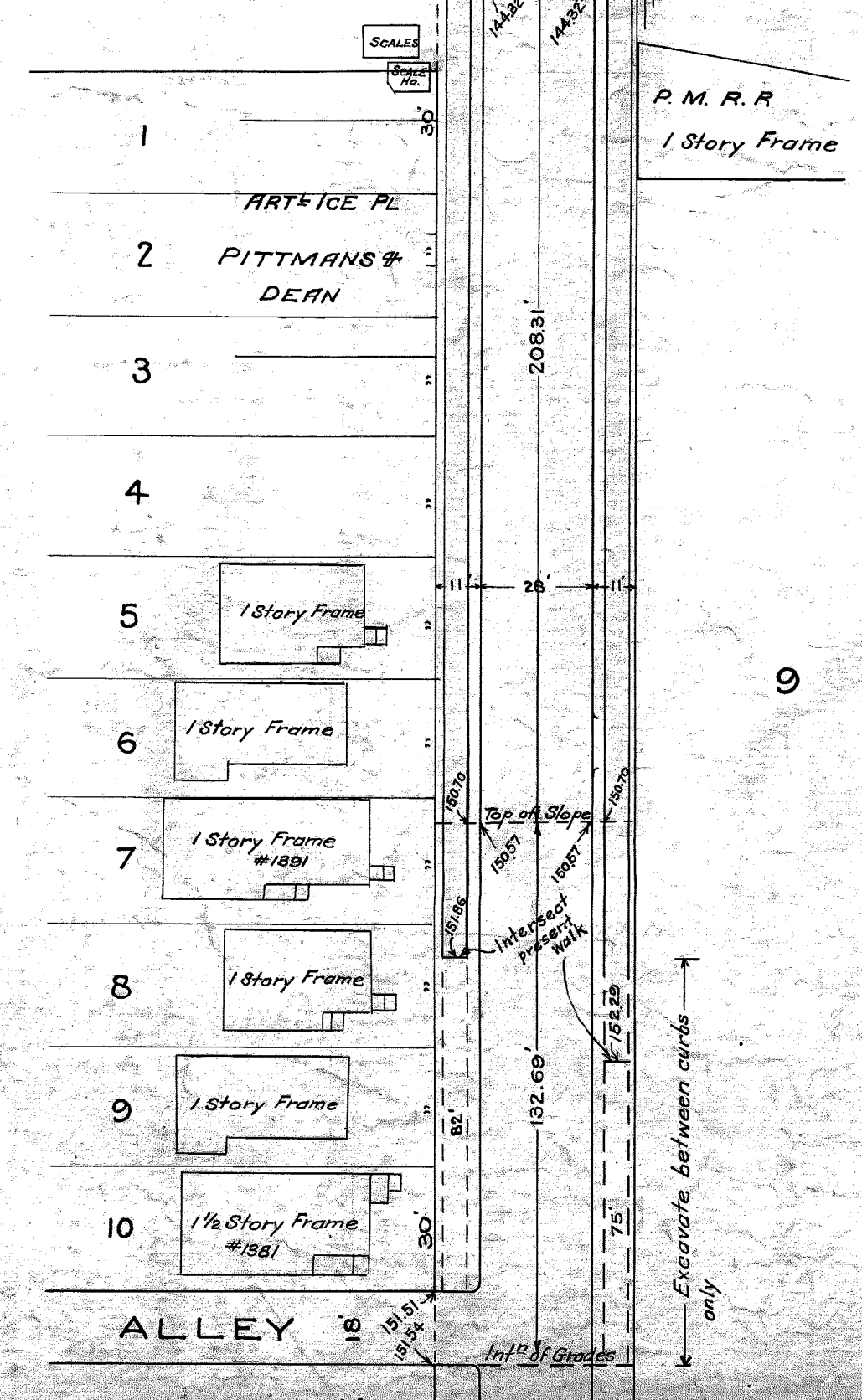
CITY OF DETROIT  
 DEPARTMENT OF PUBLIC WORKS  
 OFFICE OF CITY ENGINEER  
 DIVISION OF GRADE SEPARATION & BRIDGES

Approved *R. A. Rote*  
 City Engineer *Henry Freeman*  
 Chief Engineer, N.Y.C.R.R.  
 Asst. Chief Engineer, Wabash R.P. *[Signature]*

Scales - as shown  
 Drawn by J.T.H.  
 C.K.K. by: R.J. 4-27-28  
 Revised 10-30-30 (Final)  
 Feb. 1928.

File XU95-1

**PLAN AND PROFILE**  
 OF PROPOSED SUBWAYS IN  
**HASTINGS STREET & MILWAUKEE AVENUE**  
 UNDER TRACKS OF  
 MICHIGAN CENTRAL, LAKE SHORE, WABASH AND  
 GRAND TRUNK RAILROADS



Approved August 28th, 1911.  
 J. H. W. Dennis, CITY ENGINEER.  
 C. W. M. M., CHIEF ENGR., M.C.R.R.

PLAN  
 SCALE, ONE INCH = 40 FT.

LONGITUDINAL SECTION  
 HOR. SCALE, ONE INCH = 40 FEET.  
 VER. " " " " = 10 " "

ENGINEERS OFFICE  
 4  
 11-11  
 1911

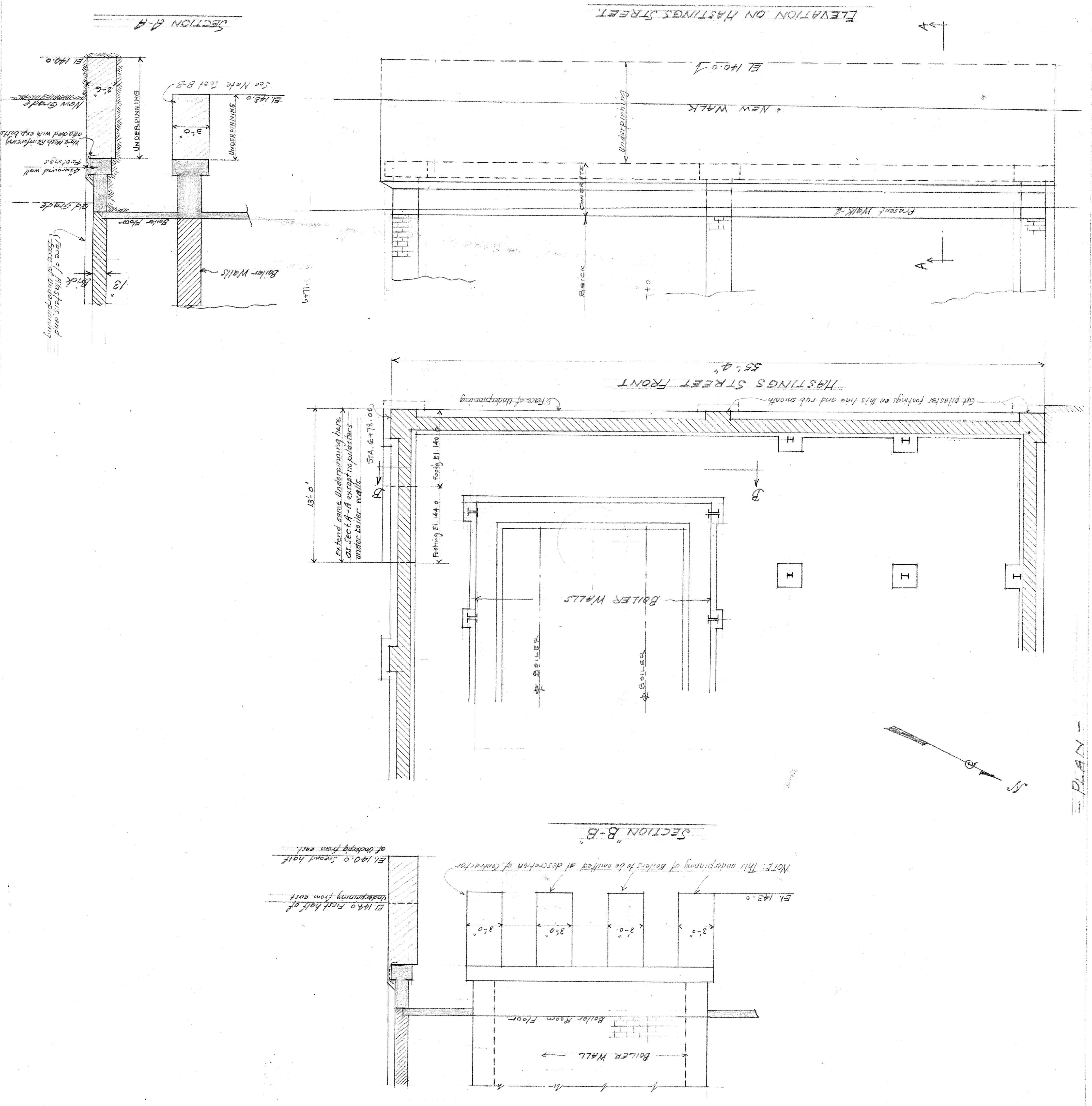
File X095-2 City Engineer's Office

CITY OF DETROIT  
 DEPARTMENT OF PUBLIC WORKS  
 OFFICE OF CITY ENGINEER  
 Division of Grade Separation & Bridges

UNDERPINNING OF FISHER BODY POWER HOUSE  
 ON  
 HASTINGS STREET

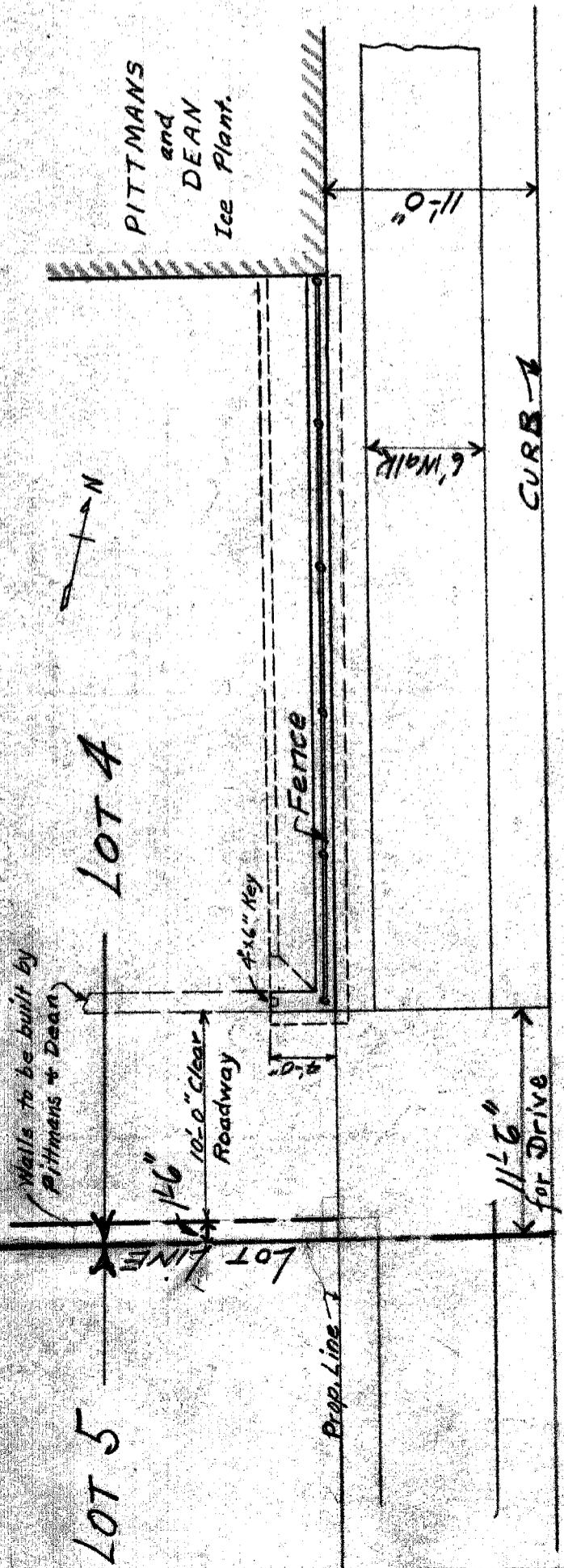
Scale 1/4" = 1'-0"  
 July 1928  
 By: R.S.  
 Revised: 7/13/28

File XU95-3

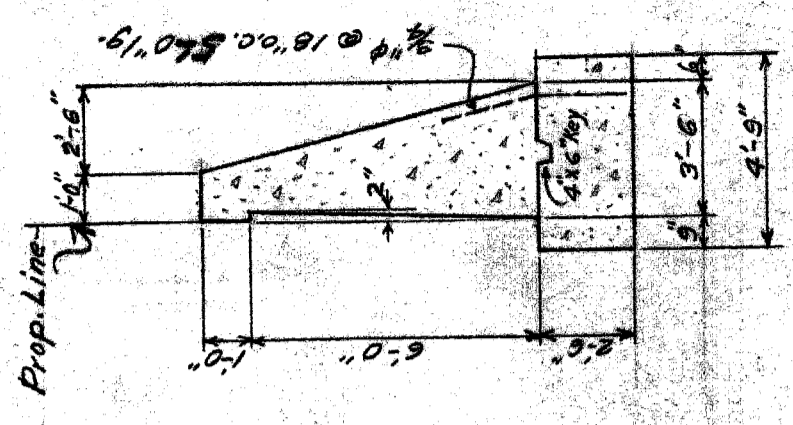


PLAN

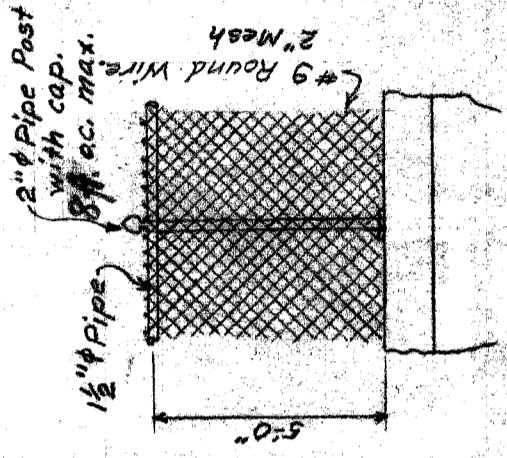




PLAN

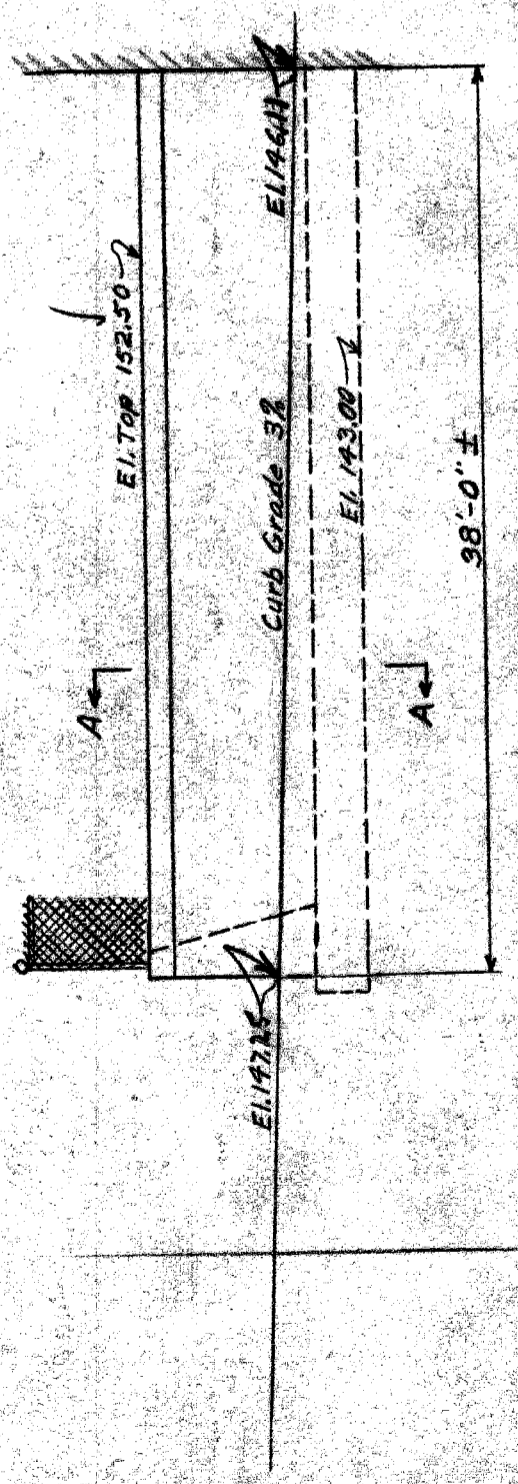


SECT. A-A



FENCE DETAIL

Note: All pipe wire mesh and fittings to be galvanized.



ELEVATION

DEPARTMENT OF PUBLIC WORKS  
CITY ENGINEER'S OFFICE  
DETROIT, MICH.

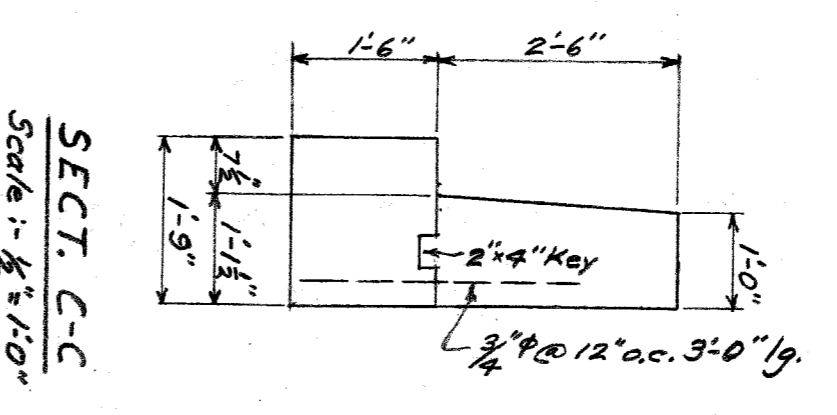
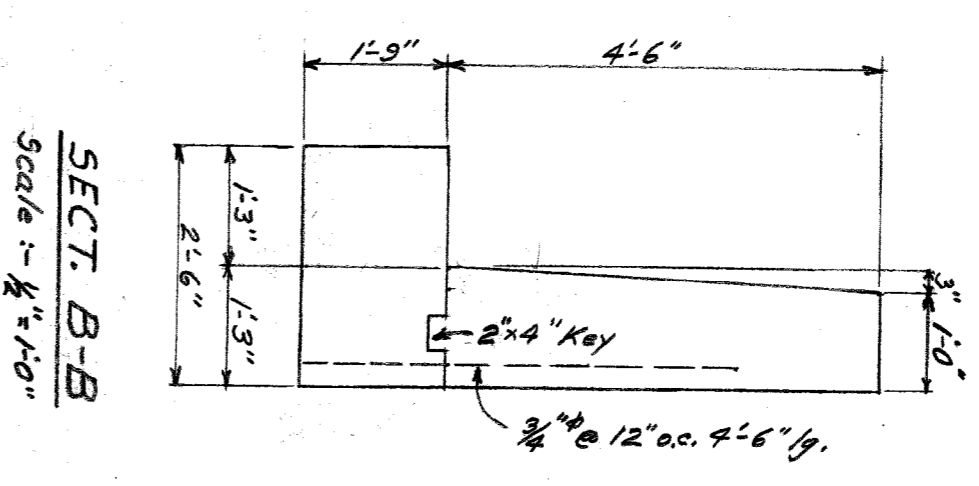
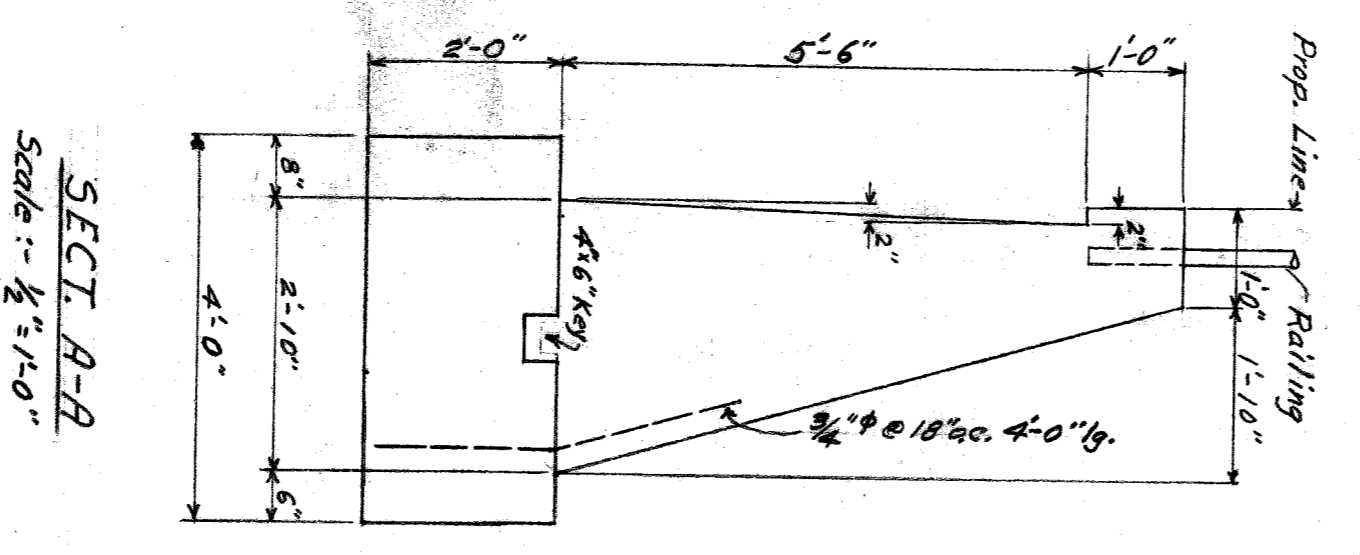
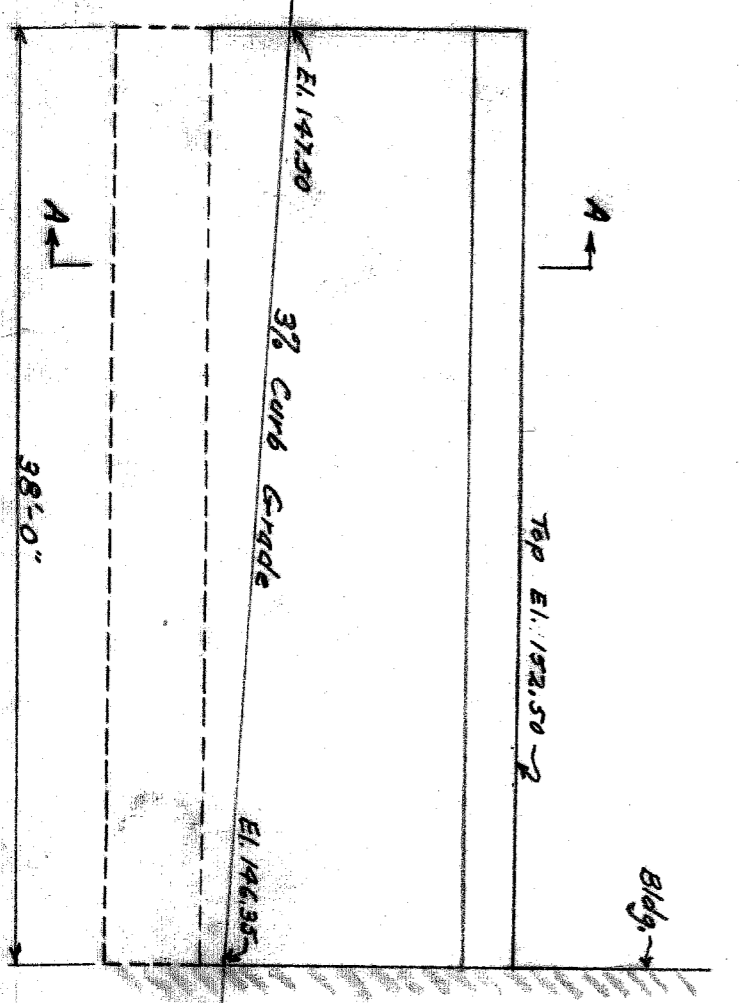
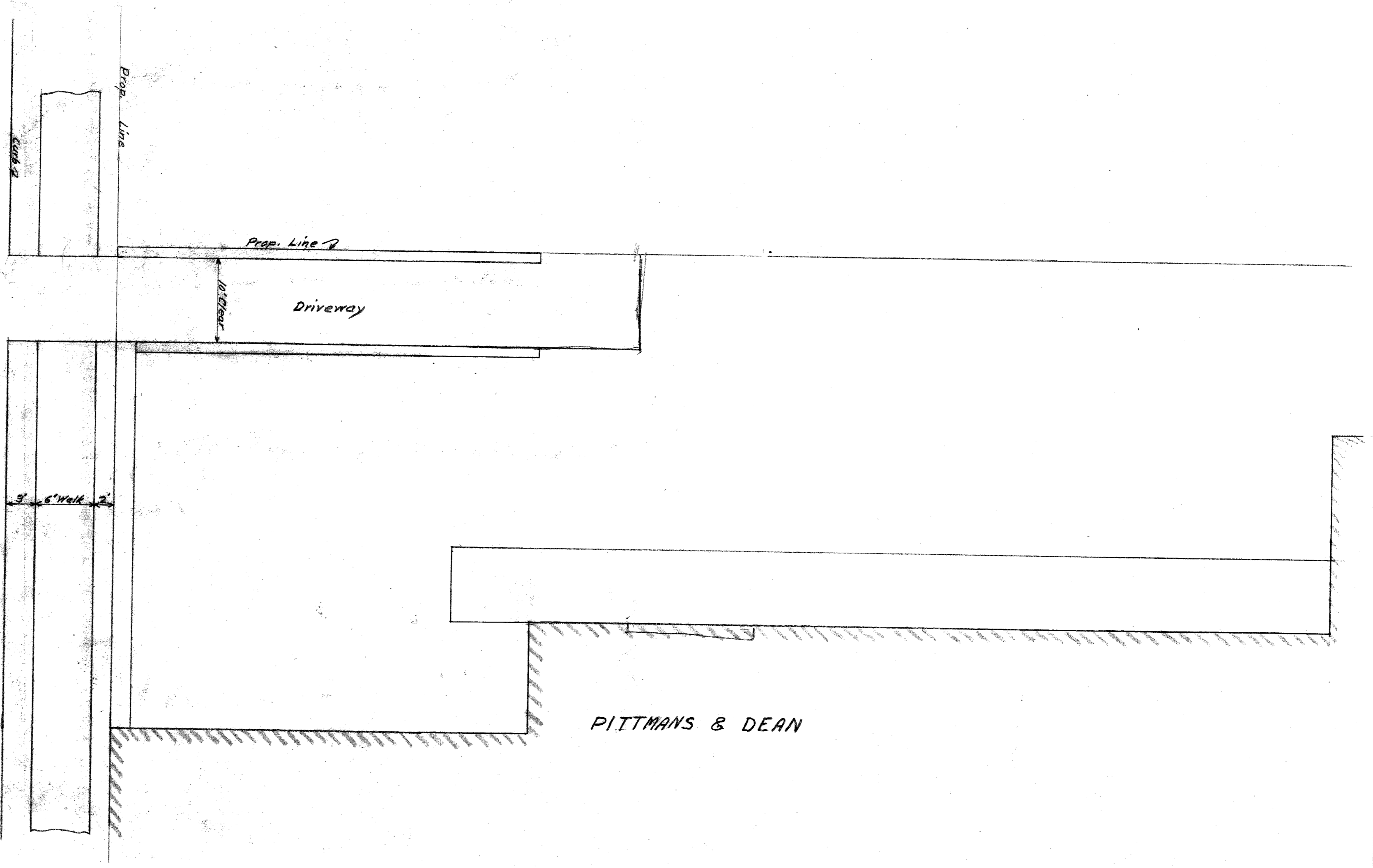
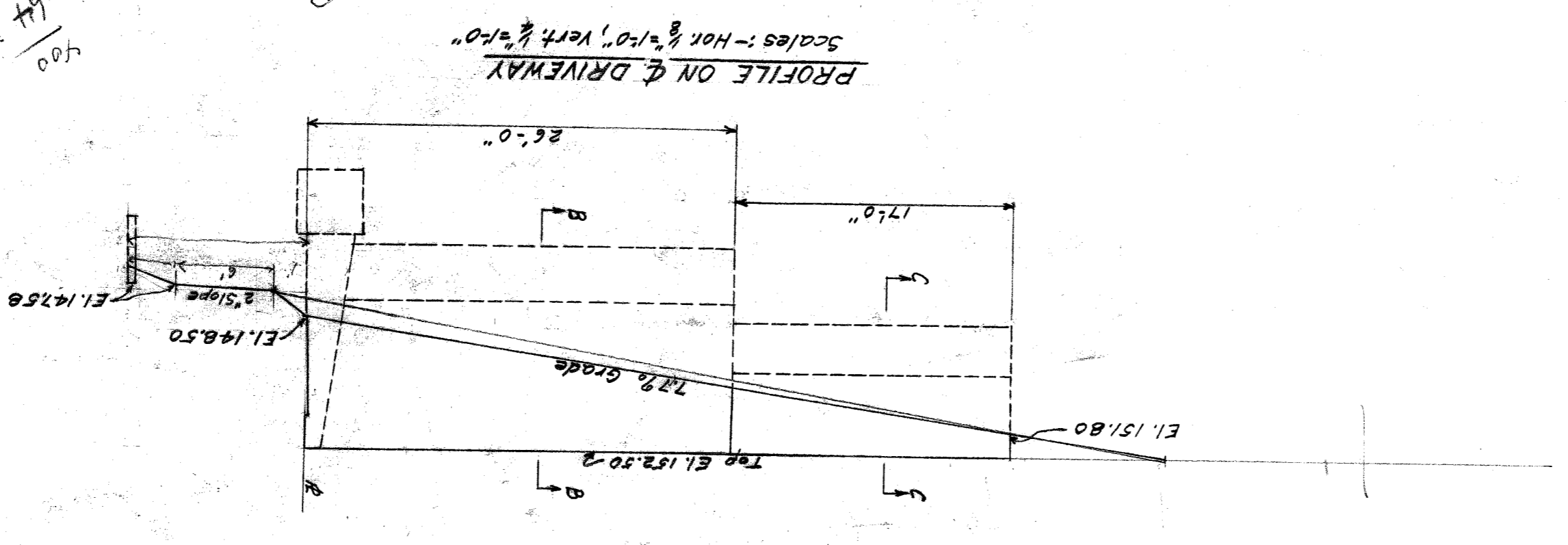
TITLE RETAINING WALL  
In front of Pittmans & Dean  
West Side of Hastings Street

DRAWN BY J.T.H. APPROVED BY R.S.  
SCALE 1/8" = 1'-0" DATE May 28, 1923  
FIELD BOOK No. W-585 PG. FILE

File XU95-5



$\frac{8\%}{102.00}$   
 $\frac{4}{100}$   
 $\frac{32}{100}$   
 $\frac{64}{100}$   
 $\frac{400}{100}$



CITY OF DETROIT

DEPARTMENT OF PUBLIC WORKS

OFFICE OF CITY ENGINEER

DIVISION OF GRADE SEPARATION & BRIDGES

HASTINGS STREET

WALLS - PITTMANS & DEAN

Scales - as shown.

Drawn by

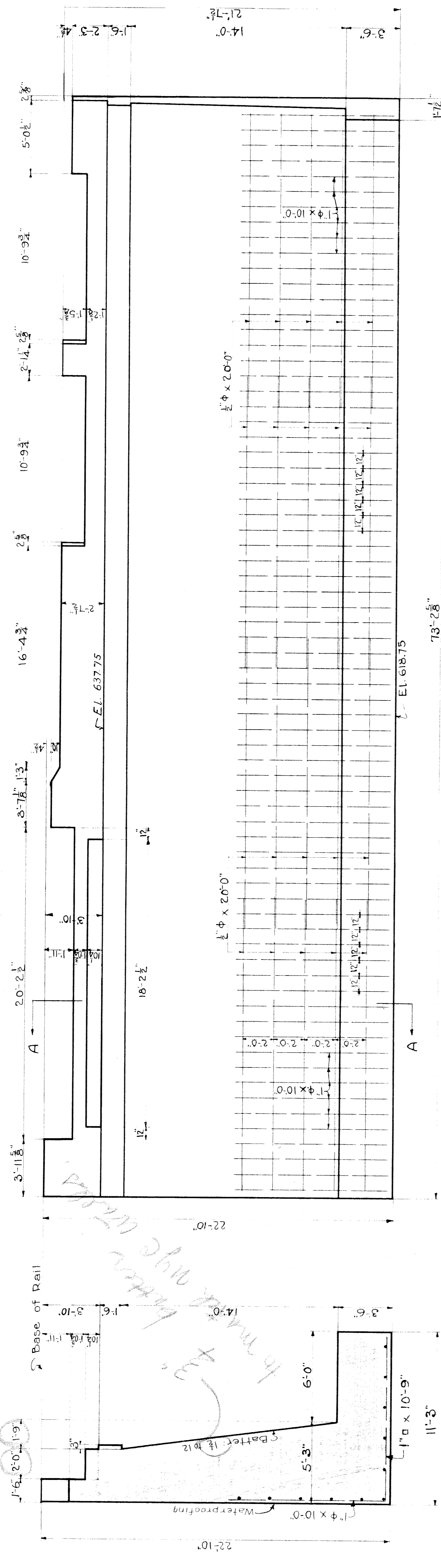
Checked by

May 1929

File XU95-7

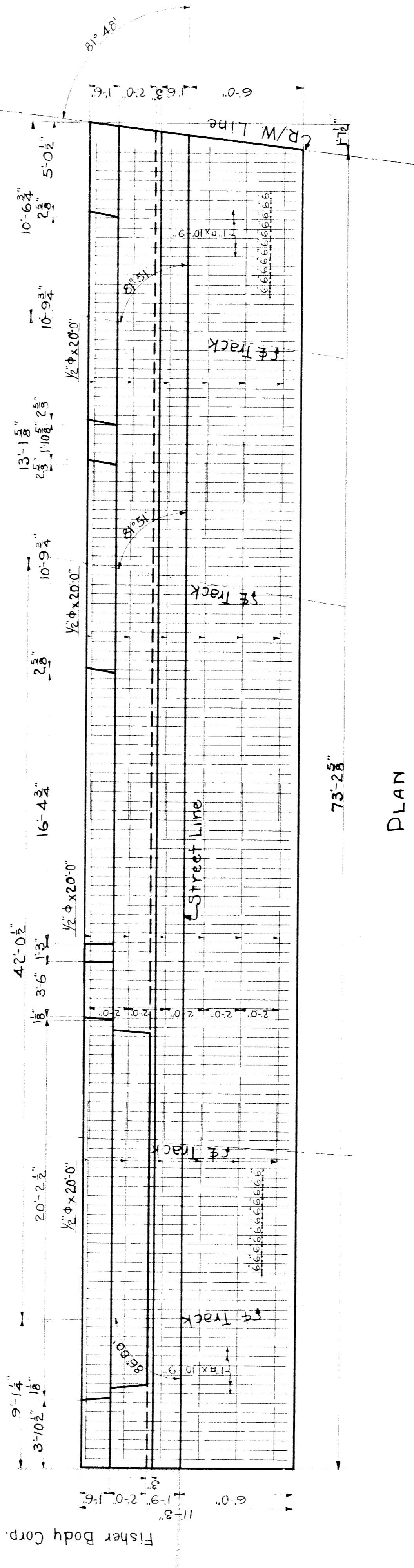






SECTION A-A

ELEVATION



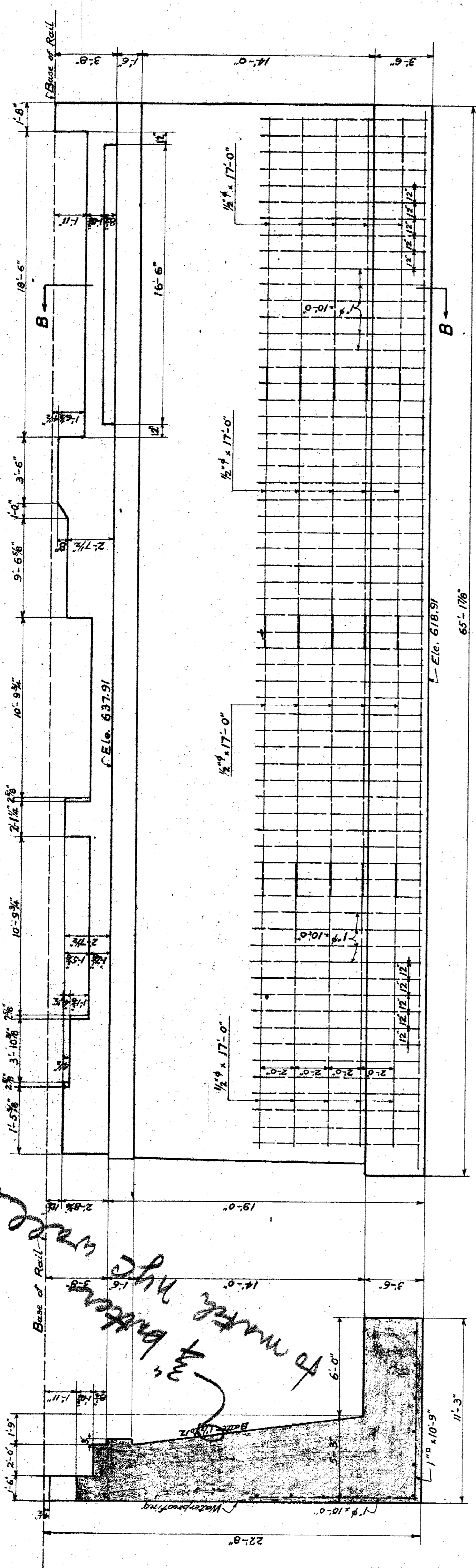
PLAN

TABLE OF RODS			
No	SIZE	LENGTH	C to C. LOCATION
74	1" φ	10'-0"	12" Vert. Back
20	1/2" φ	20'-0"	2'-0" Long. "
24	1/2" φ	20'-0"	2'-0" Footing
140	1" φ	10'-9"	6" Trans. "

TABLE OF QUANTITIES		
UNITS	ESTIMATED	REMARKS
Footings Concrete	112.2	C.Y.
Abutment "	21.2	"
Water proofing	1.1	Sds
Reinforcing Steel	2.1	Lbs

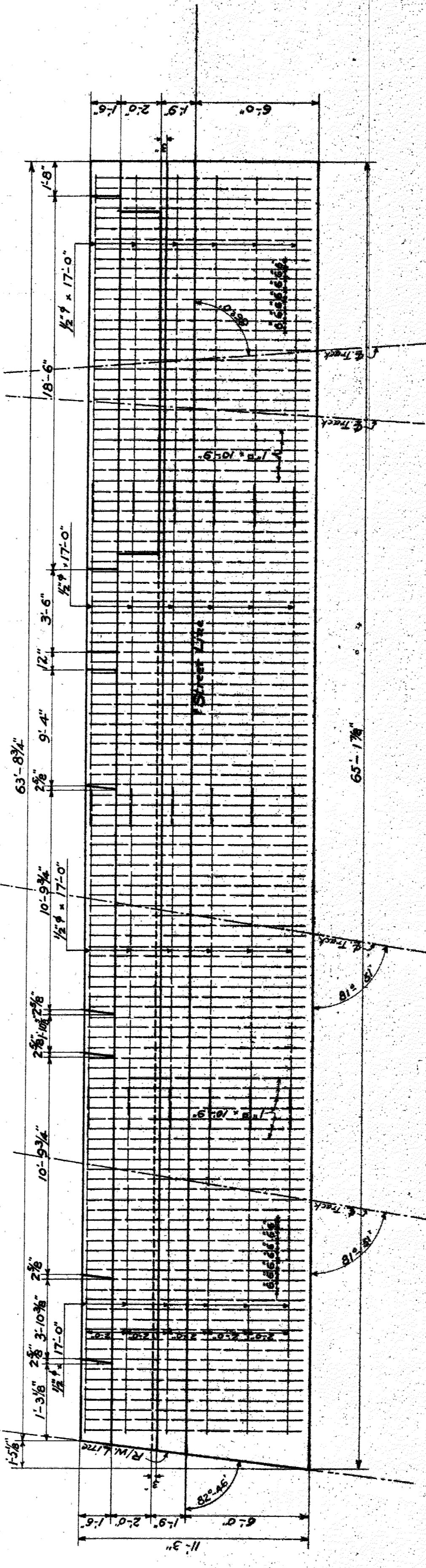
**WABASH RAILWAY**  
 DETROIT TERMINAL DIVISION  
**EAST ABUTMENT**  
**HASTINGS STREET**  
 DETROIT, MICHIGAN  
 OFFICE OF THE CHIEF ENGINEER  
 SCALE: 1/4"=1'-0"  
 May 11, 1928

**SHEET 4 OF 11**  
 DRAWN BY A.H.S. CHECKED BY F.L.M. CHECKED BY A.H.S.  
 PLAN NO. CASE NO.



SECTION "BB"

ELEVATION.



PLAN.

TABLE OF RODS.

NO.	SIZE	LENGTH	C. & C.	REMARKS
63	1" x 4"	10' - 0"	12"	Wet. Rear of Abutment.
20	1/2" x 4"	17' - 0"	24"	Long. " "
125	1" x 4"	10' - 9"	6"	Trans. Footing
24	1/2" x 4"	17' - 0"	24"	Long. " "

TABLE OF QUANTITIES.

UNITS.	ESTIMATED.	REMARKS.
Footings Concrete	93.95	cu. yds.
Abutment Concrete	124.34	" "
Retaining Wall	674.5	cu. yds.
Structural Steel	1109	sq. ft.

**WABASH RAILWAY**  
 DETROIT TERMINAL DIVISION  
 WEST ABUTMENT.  
**HASTINGS STREET**  
 DETROIT, MICHIGAN  
 OFFICE OF THE CHIEF ENGINEER

SCALE: 1/4" = 1'-0"  
 JUNE - 4 - 1928

SHEETS OF 11

PLAN NO.

# WABASH RAILWAY

DETROIT TERMINAL DIVISION

PIERS  
Hastings Street

DETROIT, MICHIGAN

OFFICE OF THE CHIEF ENGINEER

SCALE:  $\frac{3}{8}'' = 1'-0''$  JAN. 20, 1928.

SHEETS OF 11

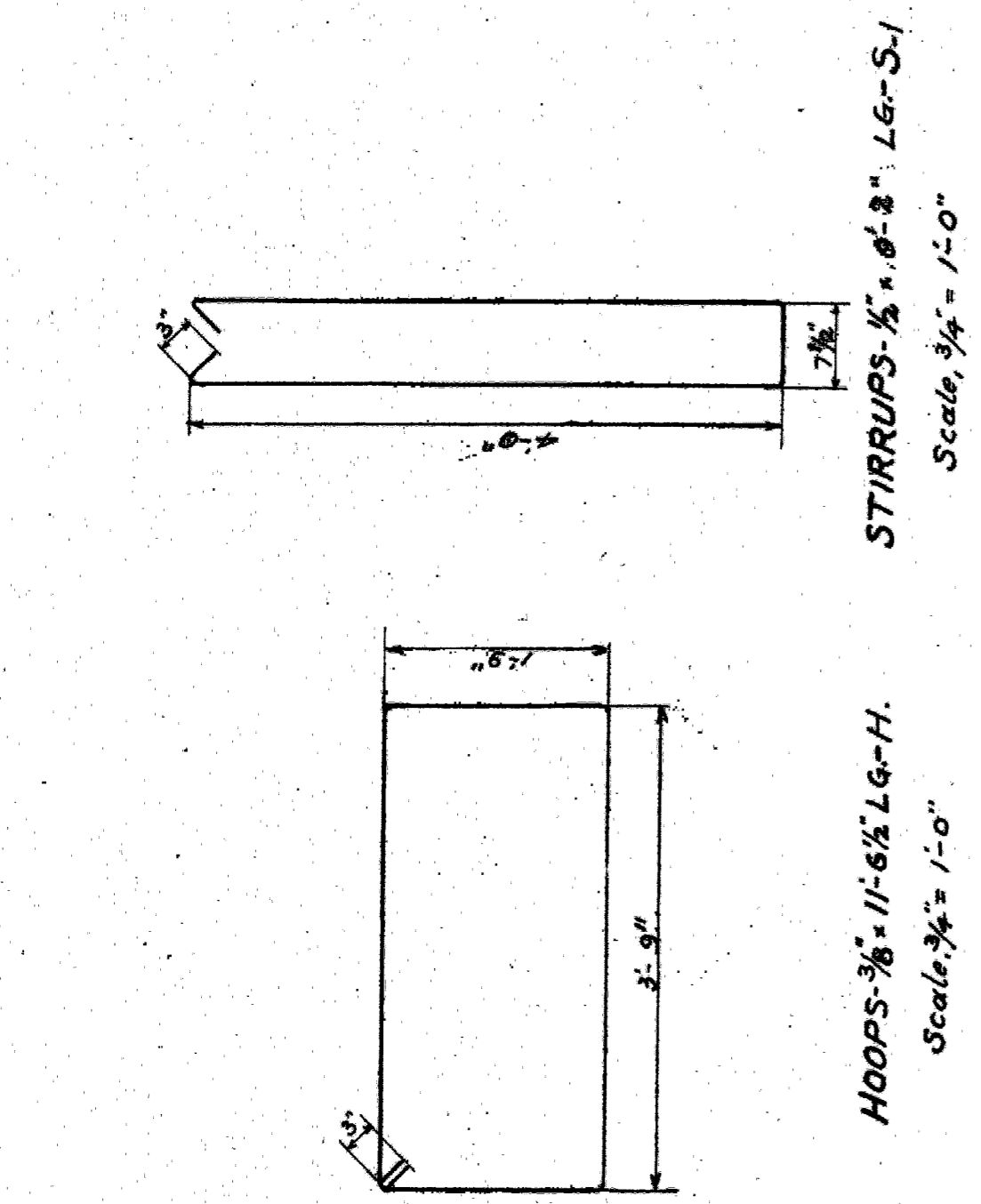
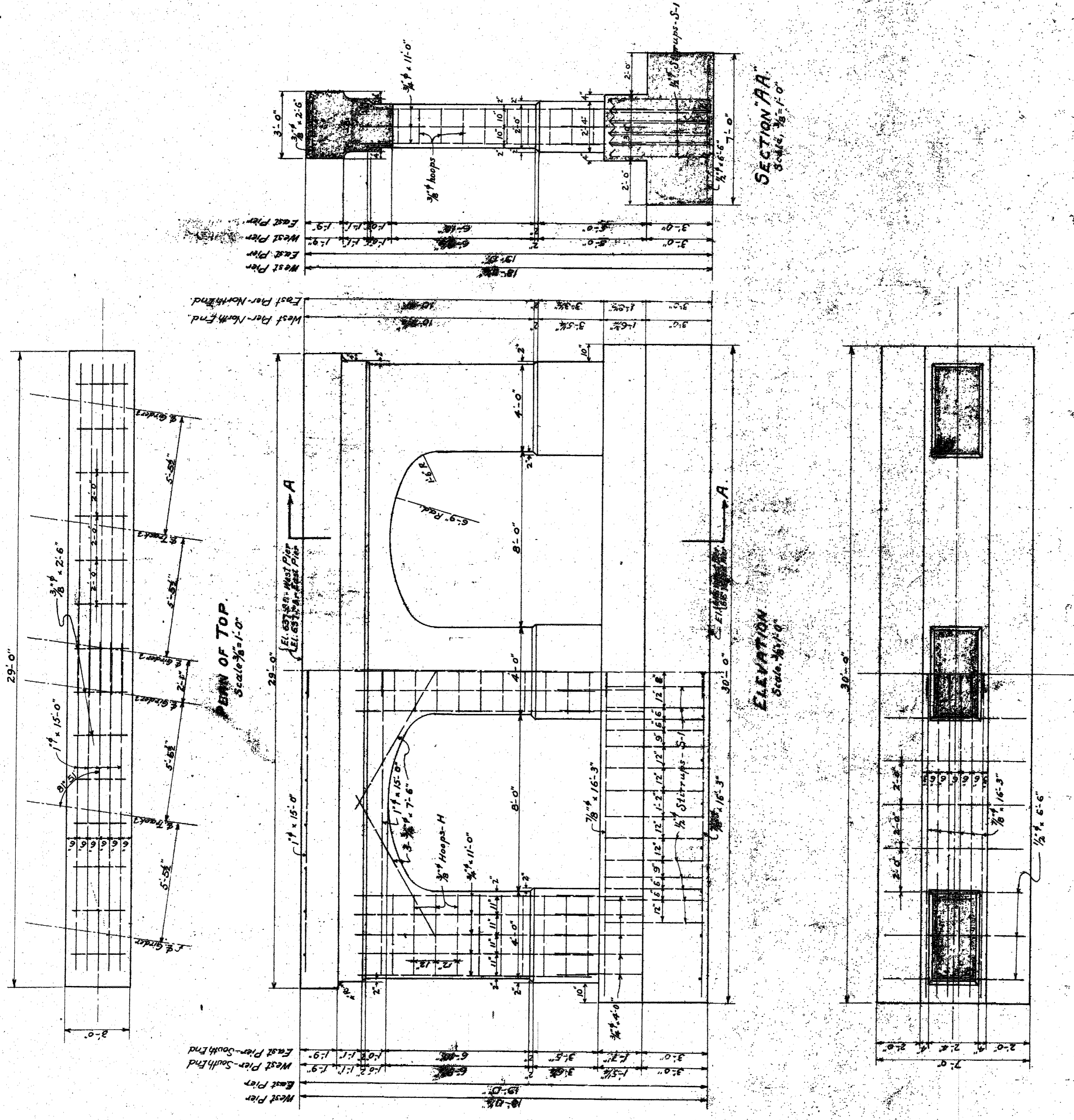


TABLE OF RODS - ONE PIER.

NO.	SIZE	LENGTH	C. & C.	REMARKS.
20	1" <sup>4</sup>	15'-0"	6"	Top
14	$\frac{3}{8}''$	2'-6"	24"	"
12	$\frac{3}{8}''$	7'-6"	6"	Incline
36	$\frac{3}{8}''$	11'-0"	10" Bill	Columns
36	$\frac{3}{8}''$	4'-0"	10" & 11"	"
30	$\frac{3}{8}''$	11'-6 1/2"	12"	Hoops-H
24	$\frac{7}{16}''$	16'-3"	6"	Footings
140	$\frac{1}{2}''$	9'-8"	max.	Stirrups-S-I
15	$\frac{1}{2}''$	6'-6"	24"	Footings

TABLE OF QUANTITIES.

UNITS	ESTIMATED	REMARKS.
Feet of Concrete	46.7	Cub Yds. 2 Piers.
Reinforcing Steel	817	Cub Yds. 2 " - 81735.60"
	7248	Pounds 2 "



WABASH RAILWAY



Paint entire rear of Abutment two coats of U.M. Aquadom or Texaco Graco Compound #1.

No.	Size	Detail	Length	Location	Mark
320	1/8" Cor. Bar	3/2" dia.	7.6	Back wall	B-1
1220	"	"	"	Flat footing	B-1
20	"	"	7.4	Piers	B-2
132	"	"	9.4	"	B-3
144	"	"	12.0	"	B-3
100	"	"	12.0	Back wall	B-5
10	"	"	20.3	Return wall	B-6

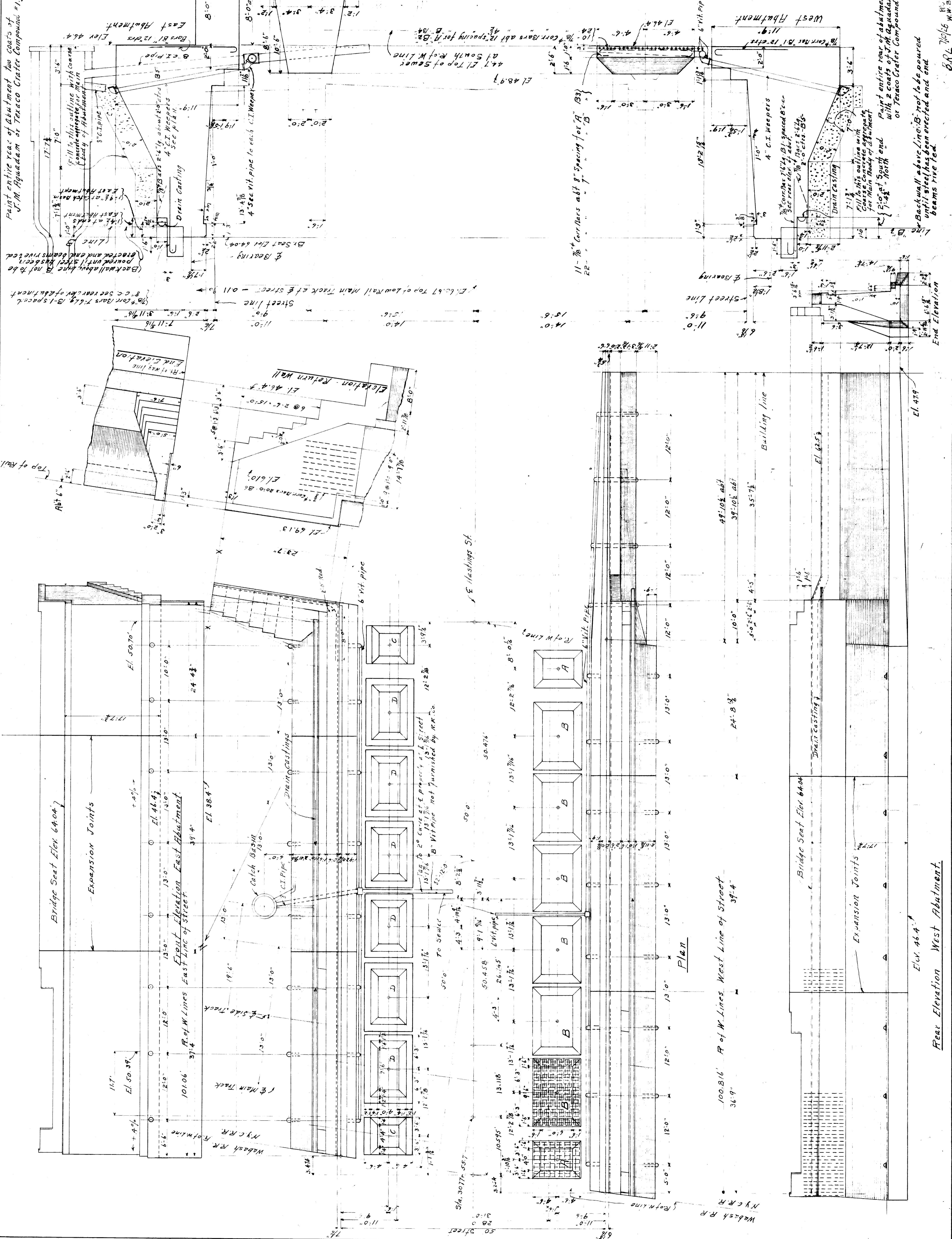
26 Lin. ft. 8" C.I. Pipe  
 16 " 8" Vit. Pipe (water by Raco)  
 200 Lin. ft. 6" Vit. Pipe  
 230 " 4" C.I. Pipe  
 20 " 4" 90° C.I. pipe elbows  
 20 " 4" 45° " "  
 94 P.C.S. Drain Castings Pat. K 779  
 4000 sq. ft. to be waterproofed.  
 concrete.  
 1450 Cu.Yds. Class. F. Broken Stone  
 7250 Sacks Cement  
 approx. 790 Cu.Yds. Sand  
 230 Cu.Yds. Coarse Concrete Aggregate

TRANSVERSE SECTION

Note: Masonry for East piers & Abutment to be carried down to bottom of sewer and as much farther as is necessary to reach a good foundation. Masonry for West piers & Abutment to be carried down to elevations shown and as much farther as is necessary to reach a good foundation.

General Notes  
 N.Y.C.R.R. Specifications No. 3005 Issue 4 of 1921, for Concrete Masonry and Supplement by Instructions B 8410. See Draw. B 8700 for details of Drain Cast. 79

M.Y.C.R.R. West Bridge Dept. F.O. Photo. C.E.  
 Bridge No. Detroit Branch  
 Over Hastings Street  
 Detroit Mich.  
 Masonry Plan  
 Sheet No. 1 of 1  
 Scales 1/8" = 1'-0" May 8-1928 No. B-8735 1R4



Paint entire rear of abutment with 2 coats of U.M. Aquadom or Texaco Graco Compound.

Back wall above Zinc-B. not to be poured until steel has been erected and end beams rivetted.

End Elevation

Building line

Street line

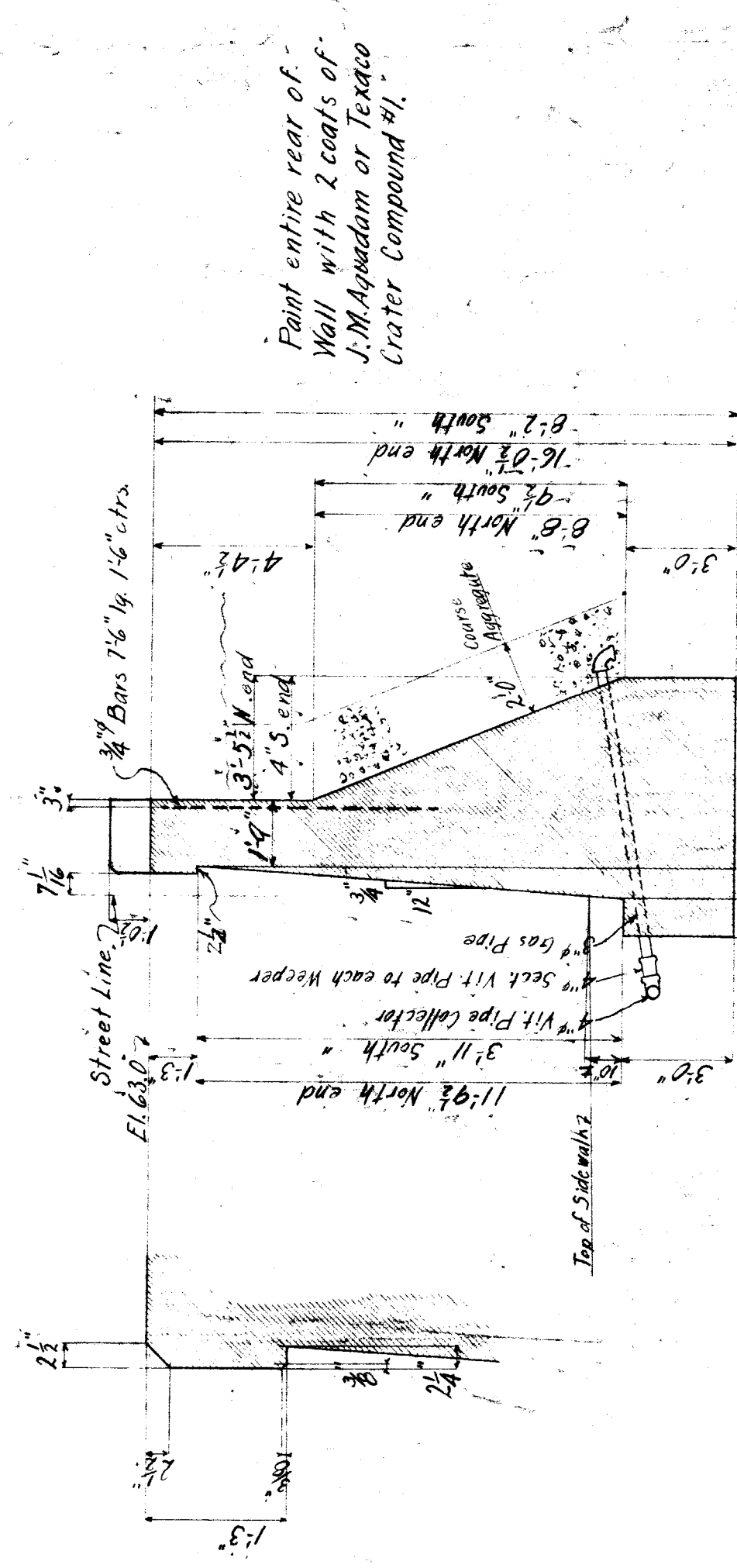
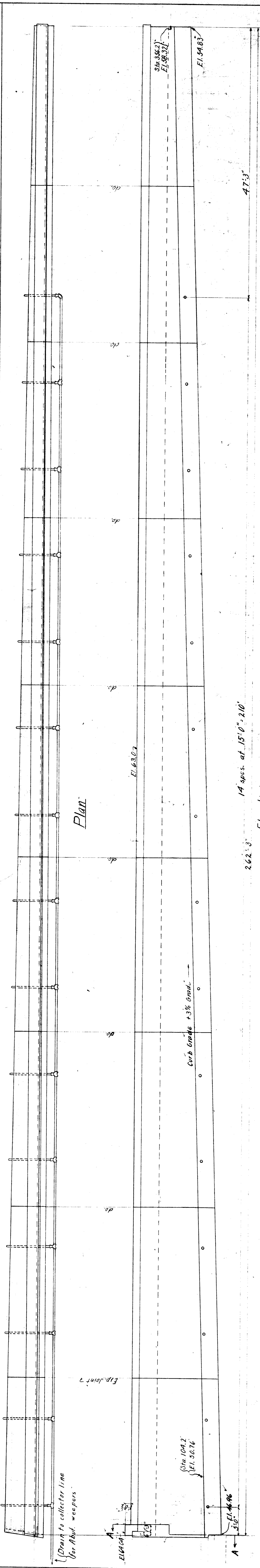
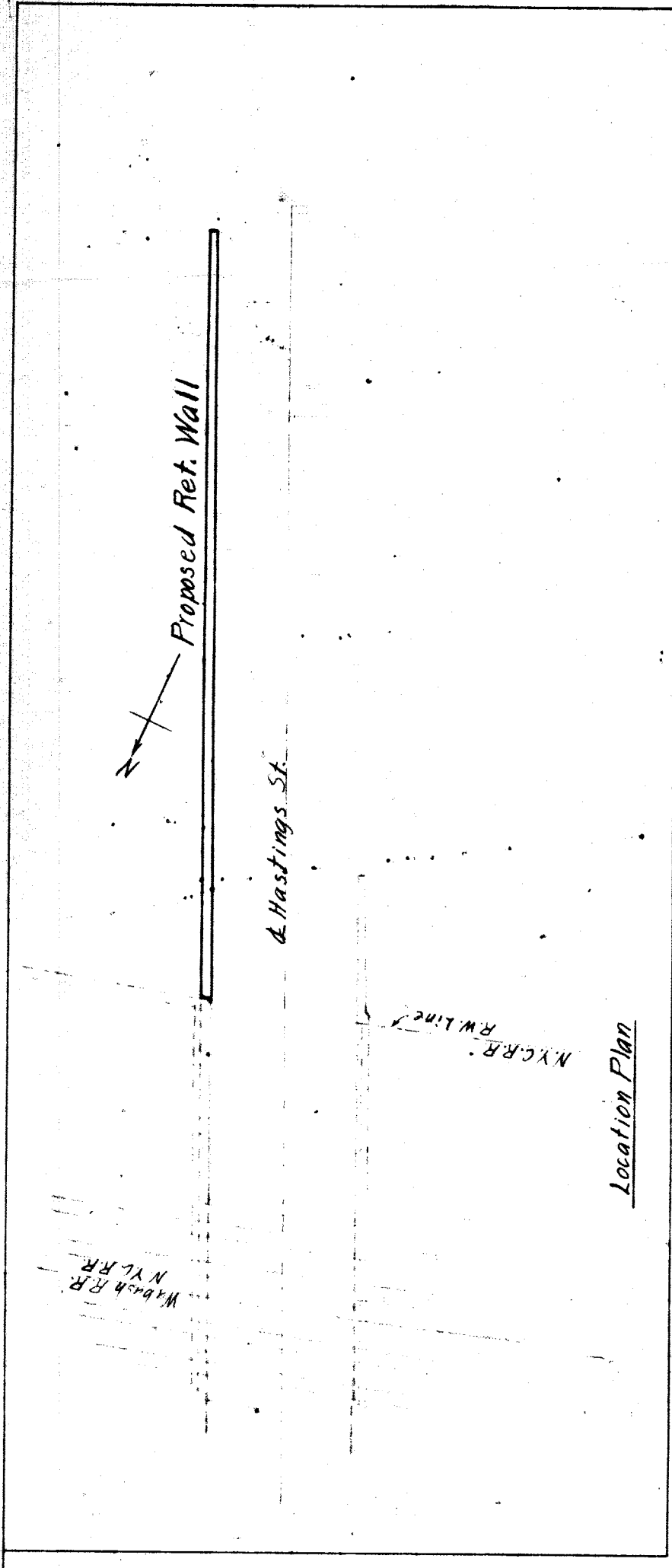
Street line

Street line

Street line





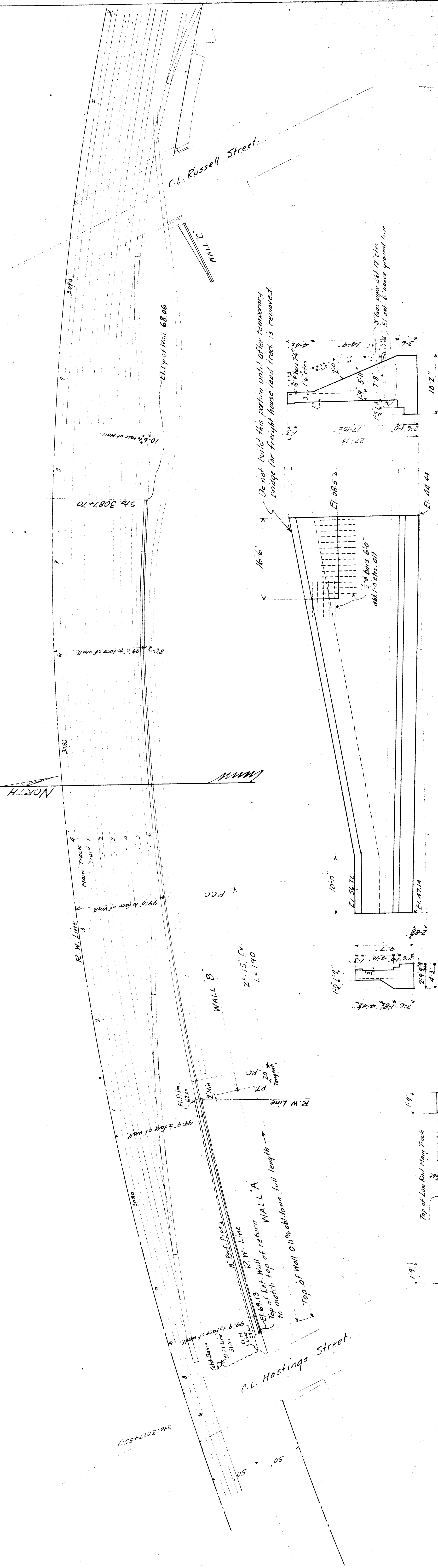


Bill of Material

390'	Cu. Yds. Concrete	} Approx.
1955'	Sacks, Cement	
213'	Cu. Yds. Sand	} Broken Stone
282'	" " "	
180'	" " "	} Coarse Aggregate
96'	Lin. Ft. 3" Gas Pipe	
15'	Elbows for 3" "	} VIT Pipe
230'	Lin. Ft. 4" VIT Pipe	
1'	Elbow for 4" "	} "
14'	Tees " 4" "	
175'	3/4" Bars x 7'6" lg	} Sq. Ft. Waterproofing
3245'	Sq. Ft. Waterproofing	

Gen. Notes:  
 N. Y. C. R. R. Specs. No. 3005 Issue A of 1921  
 for Concrete Masonry, supplemented by  
 instructions B-8410:  
 Broken Stone Concrete Class E.





Do not build this portion until after temporary bridge for freight house lead track is removed

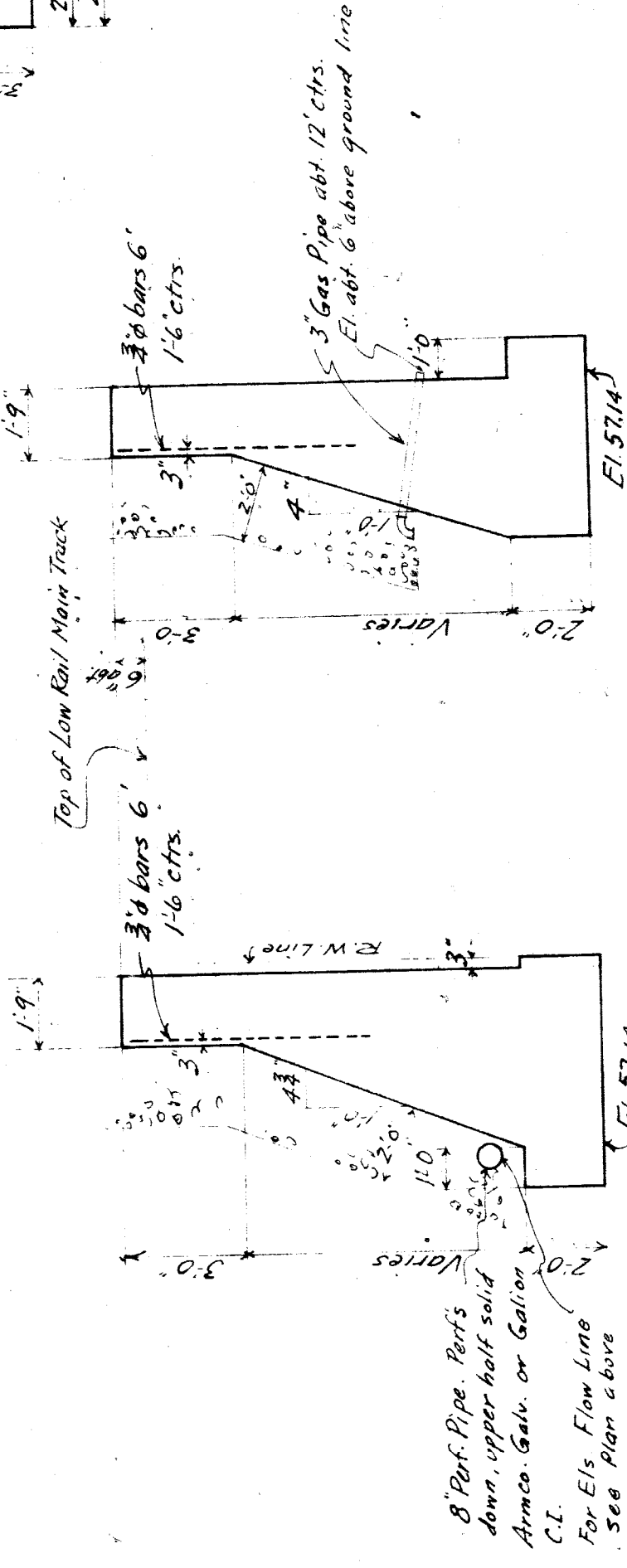
**Bill of Material**

1450 Cu. yds Concrete
7300 Sacks Cement
800 Cu. yds Sand
1060 - - - Stone
660 - - - Crushed Conc. Aggregate (Base of Wall)
630 - 3/8 bars 6'-0" (RT)
46 - - - 7'-6" - - - - -
58 - 3/8 Gas pipe 3'-9" - - - - -
1 - - - - - 5'-6" - - - - -
1 - - - - - 7'-0" - - - - -
320' pref. 8" pipe
1 - 45° Elbow for 8" pipe
60 - - - - - 3" pipe
20 - 3/8 bars 6'-0" Corr.

**Gen Notes:**  
 N.Y.C.R.R. Specs. No. 3005 - Issue of 1921  
 for Concrete Masonry, supplemented  
 by Instructions B 8470 - Class F Concrete  
 Exp. Joints about every 30'

N.Y.C.R.R. West. Bridge Dep't. R.O. F. O. E.  
 Retaining Walls - Detroit, Mich.  
 East of Hastings St.  
 and West of Russell St.  
 Detroit, Mich.

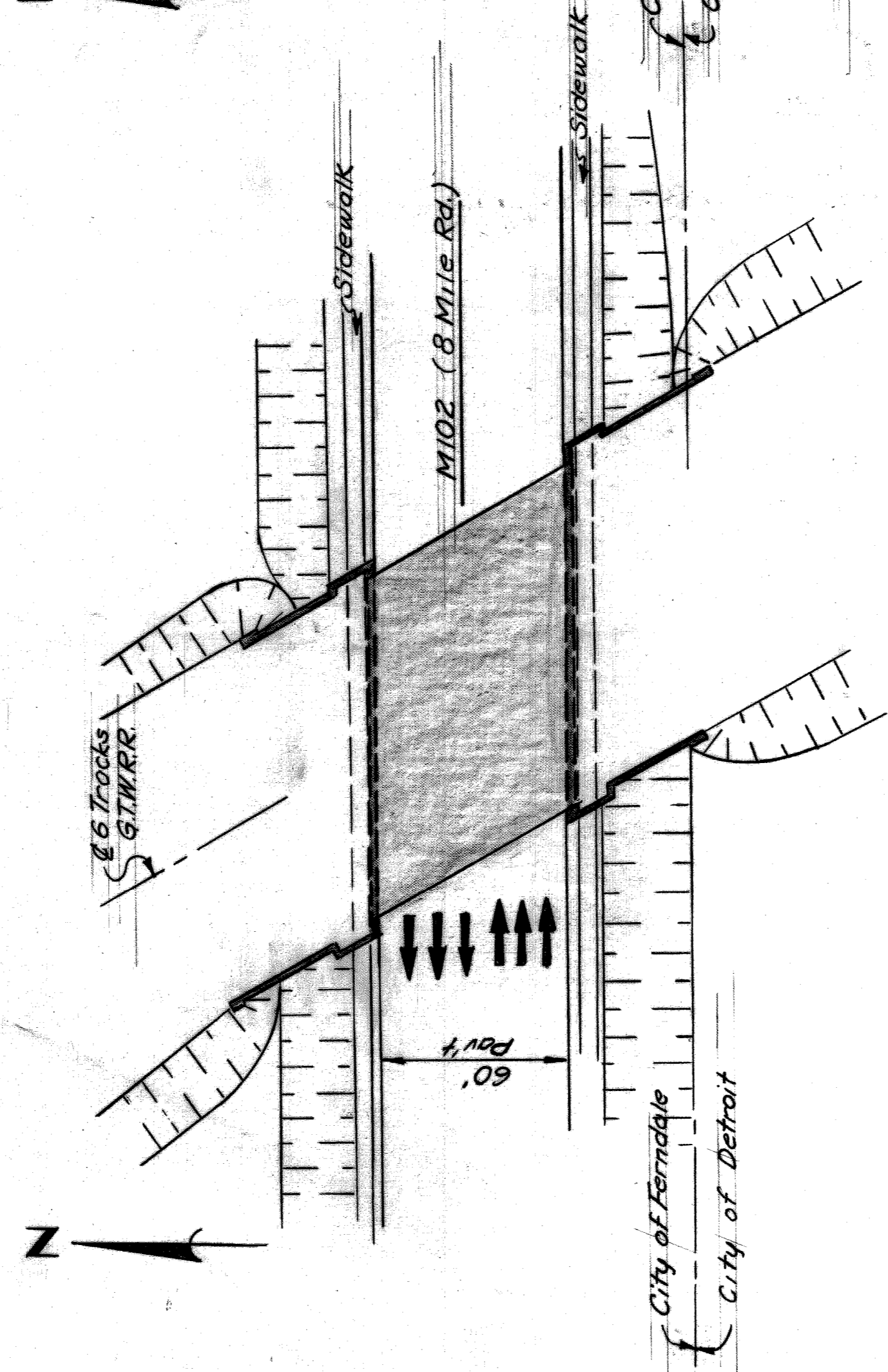
Scale 3/8" = 1'-0" June 11-1928 No. B-8757  
 Sheet 1 of 1  
 File No. 28 west retaining walls  
 B.S. No. B-8757 (R)



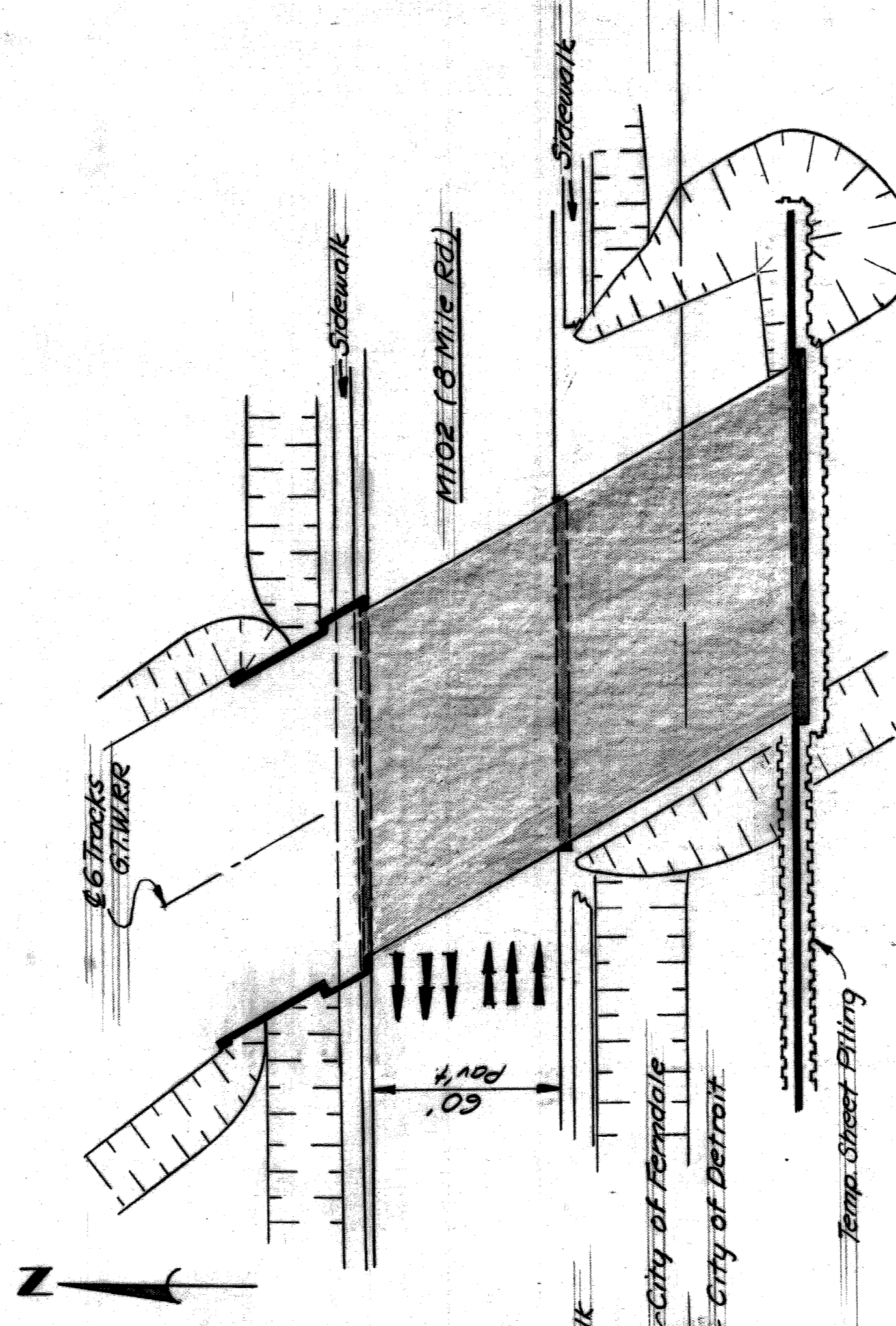
8" Pref. Pipe. Perfs.  
 down, upper half solid  
 Amer. Galv. or Galion  
 C.L.  
 For Elevation  
 See Plan above

W.P.

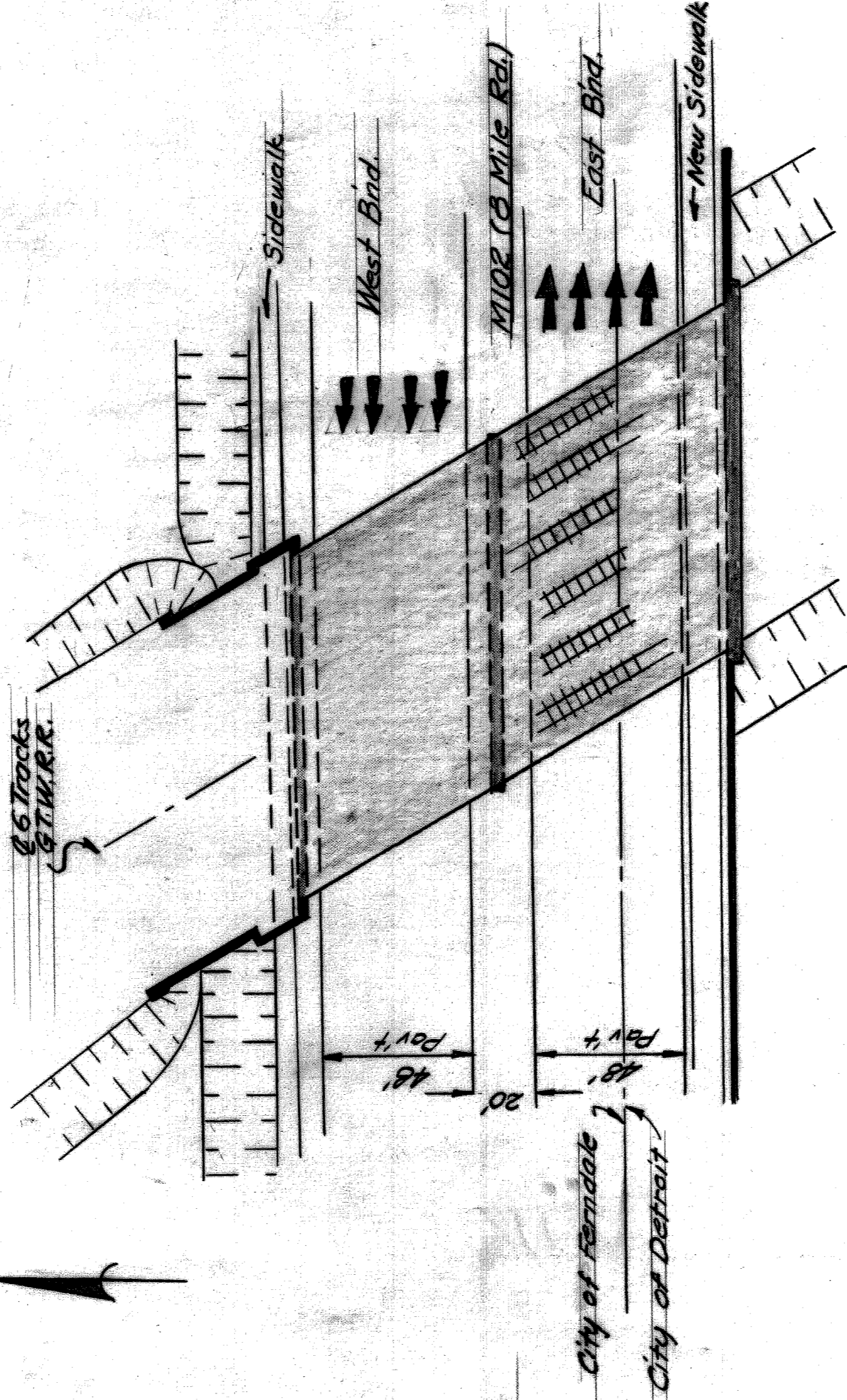
FILE NO. 95-18



PLAN OF EXISTING GRADE SEPARATION



PLAN DURING CONSTRUCTION



PLAN OF PROPOSED GRADE SEPARATION

ZU 97

SHEET 1 OF 1 SHEETS  
 JOB No.  
 DRWG No. C1  
 DATE Jan. 3, 1968

8 MILE ROAD CROSSING  
 THE GRAND TRUNK WESTERN R.R.  
 (XOI OF 82143 B)

CITY OF DETROIT  
 DEPARTMENT OF PUBLIC WORKS  
 HIGHWAY & EXPRESSWAY DIVISION

APPROVED:

DESIGNED BY  
 DRAWN BY R. James  
 TRACED BY  
 CHECKED BY J.C.  
 HIGHWAY & EXPRESSWAY ENGINEER

NO.	DATE	DESCRIPTION

REVISIONS LOCATED BY COORDINATES ON SHEET