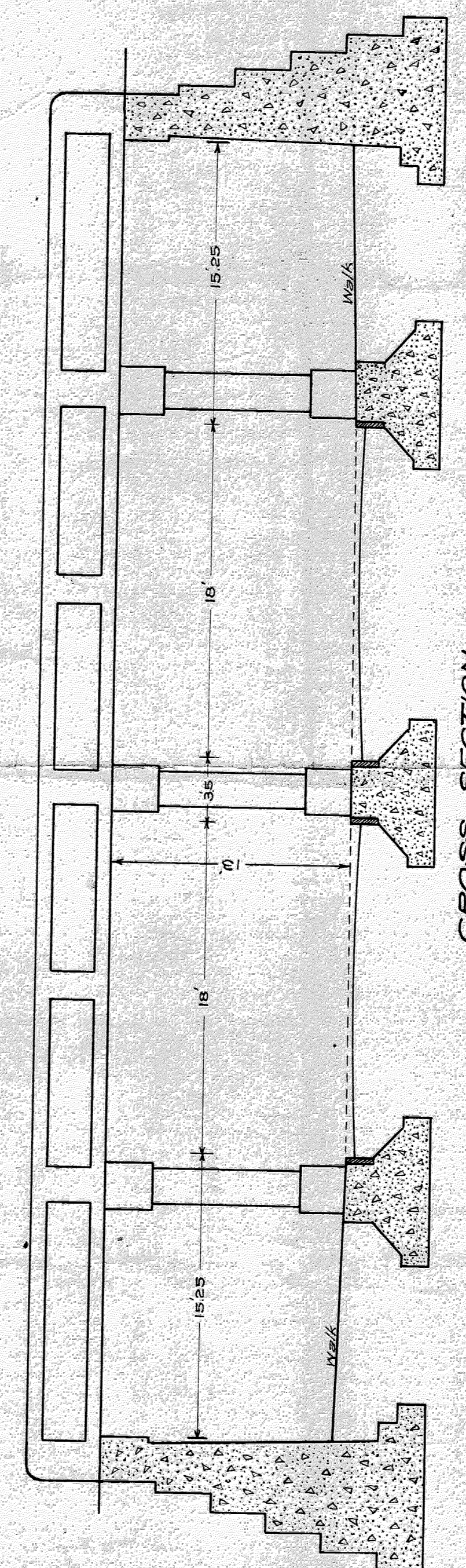
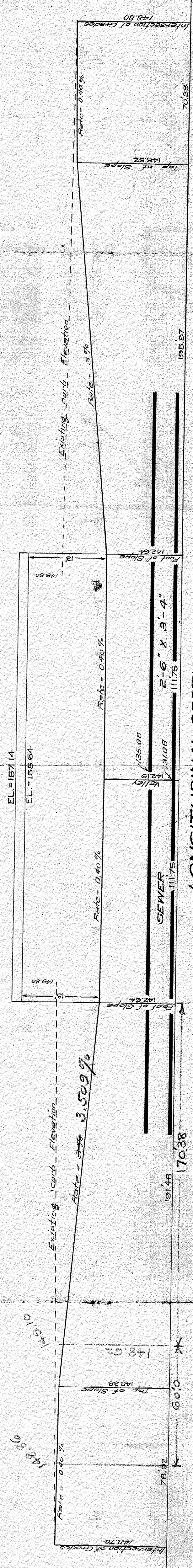


PLAN



CROSS SECTION  
SCALE, ONE INCH = 6'



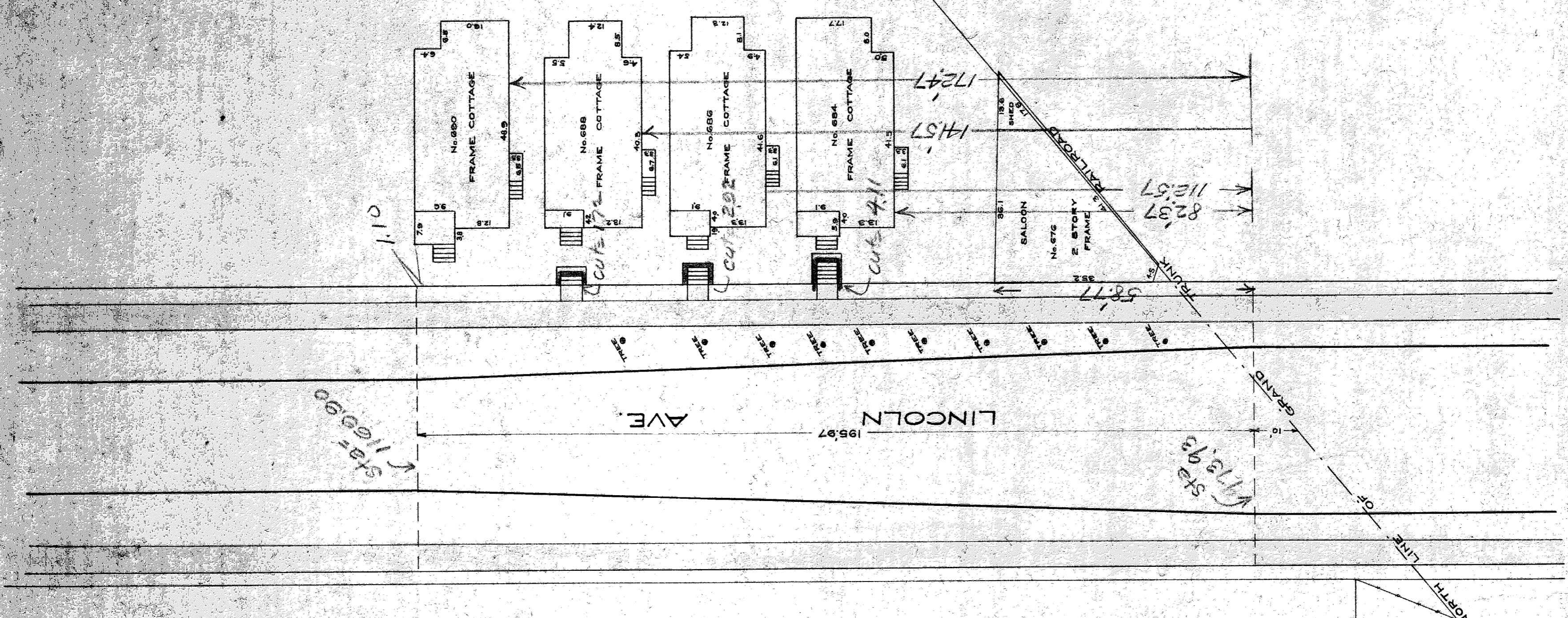
LONGITUDINAL SECTION

PLAN OF  
PROPOSED SUBWAY  
IN  
**LINCOLN AVE**  
UNDER  
G. T. LAKE SHORE & MICH. CENT'L R.R'S.

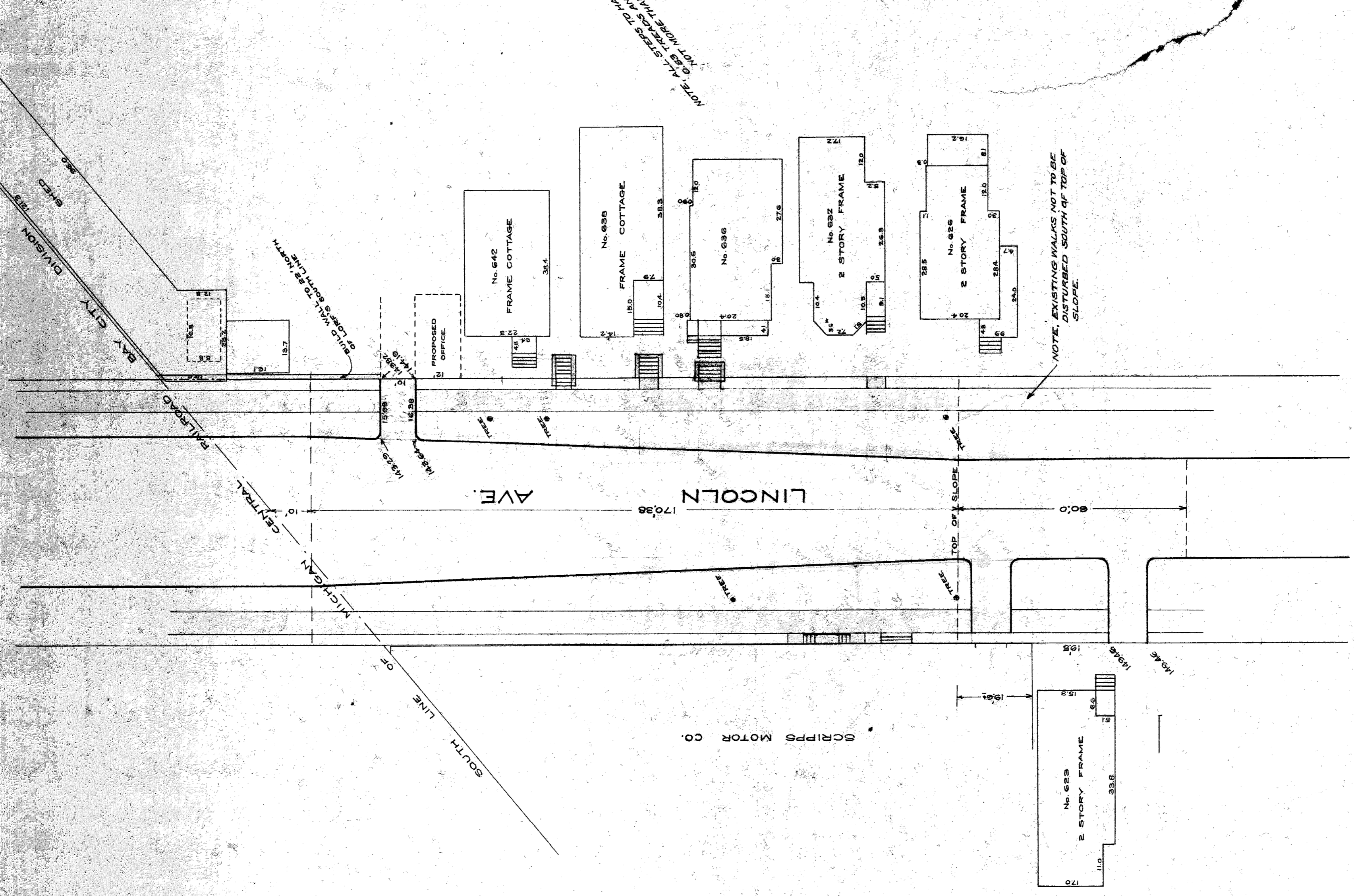
Approved \_\_\_\_\_ 1915  
CITY ENGINEER  
CHIEF ENGINEER, M.C.R.R.

29.09 35'





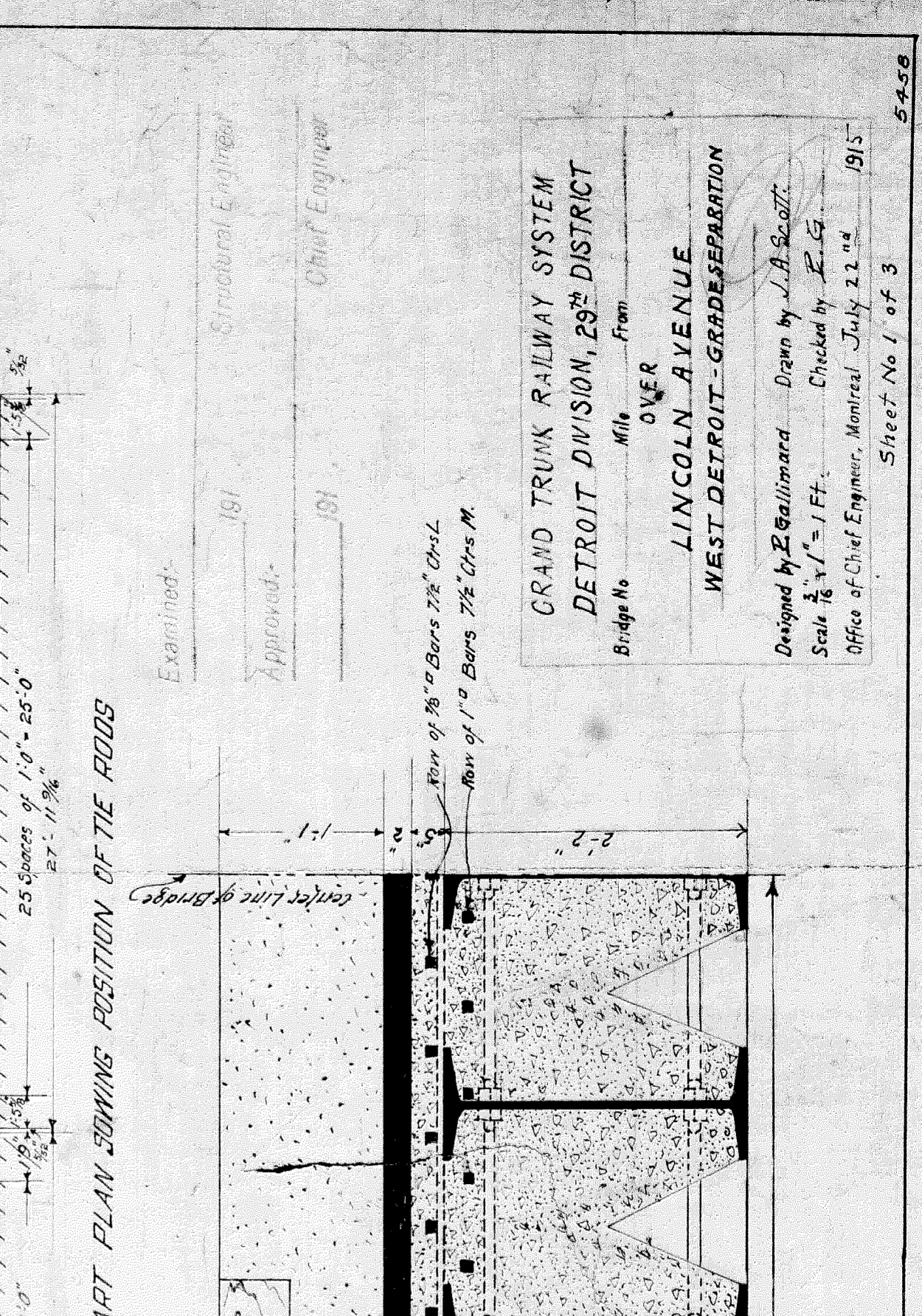
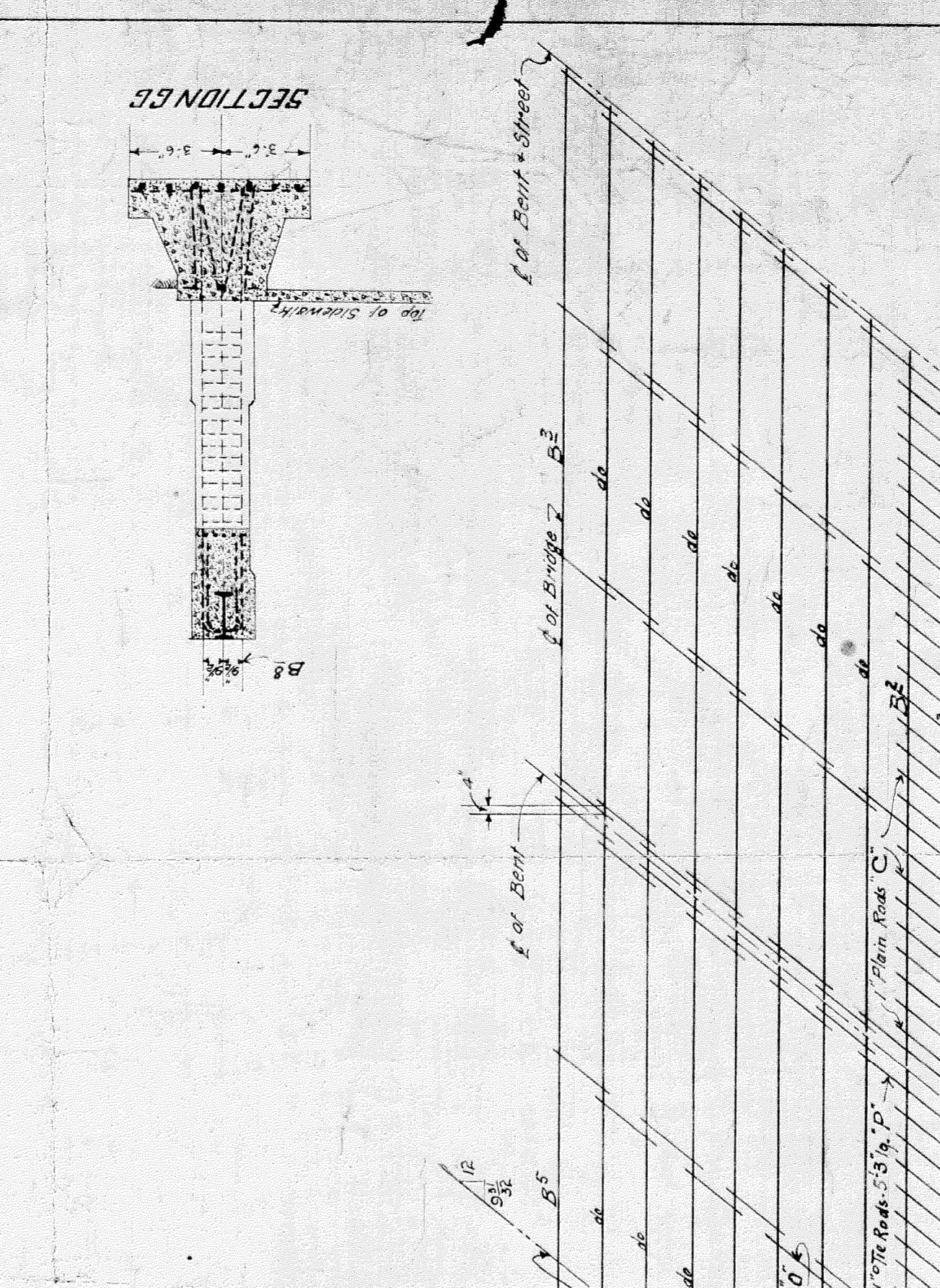
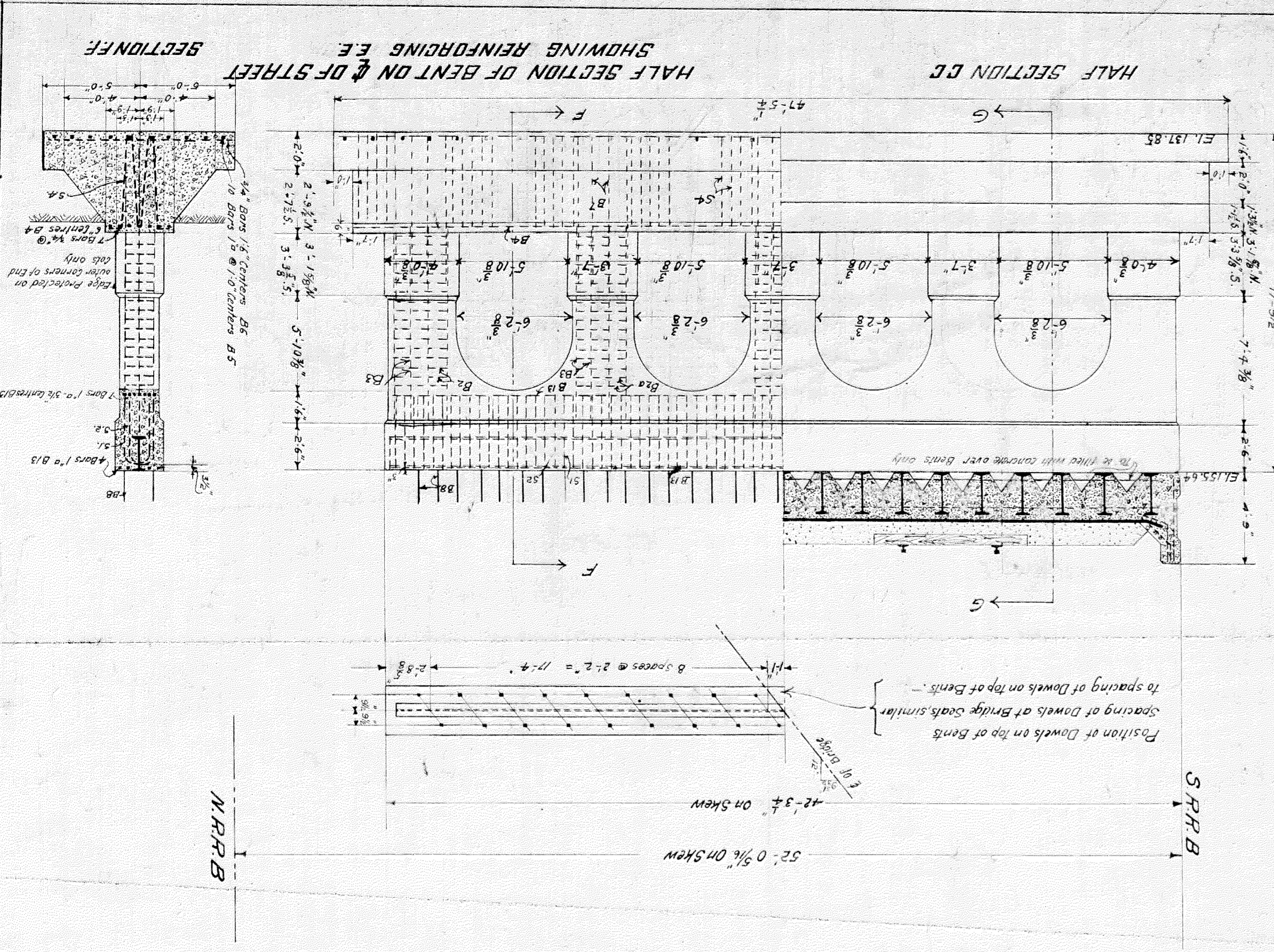
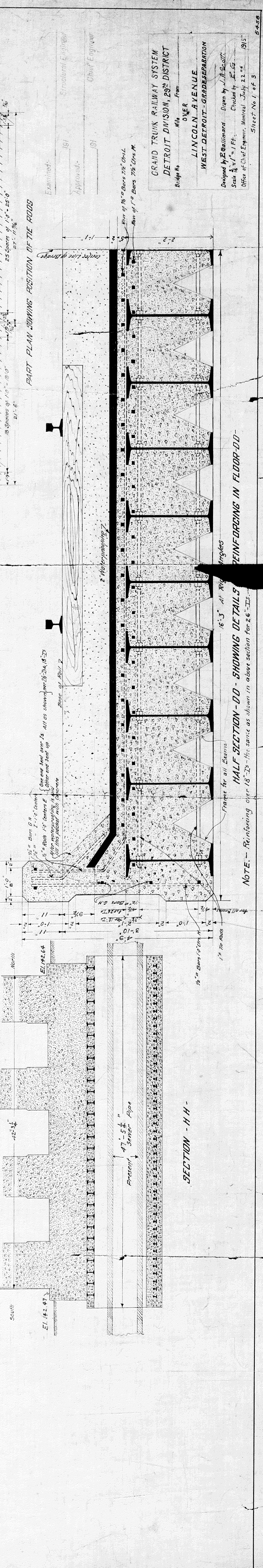
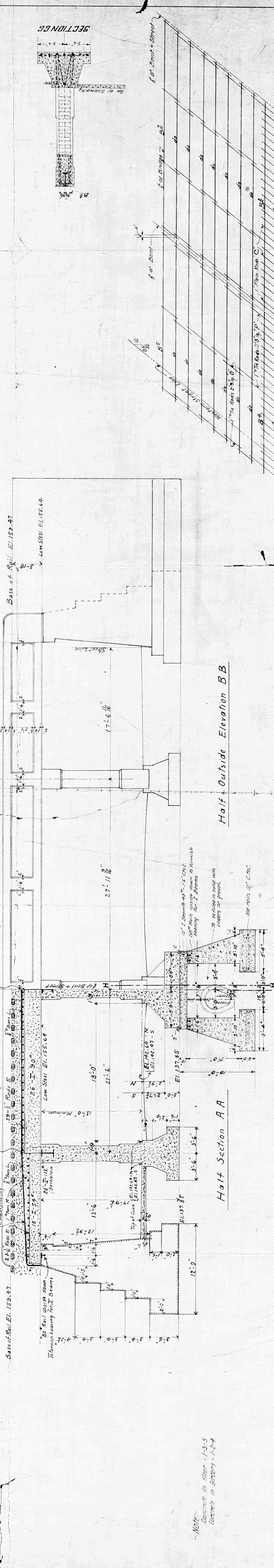
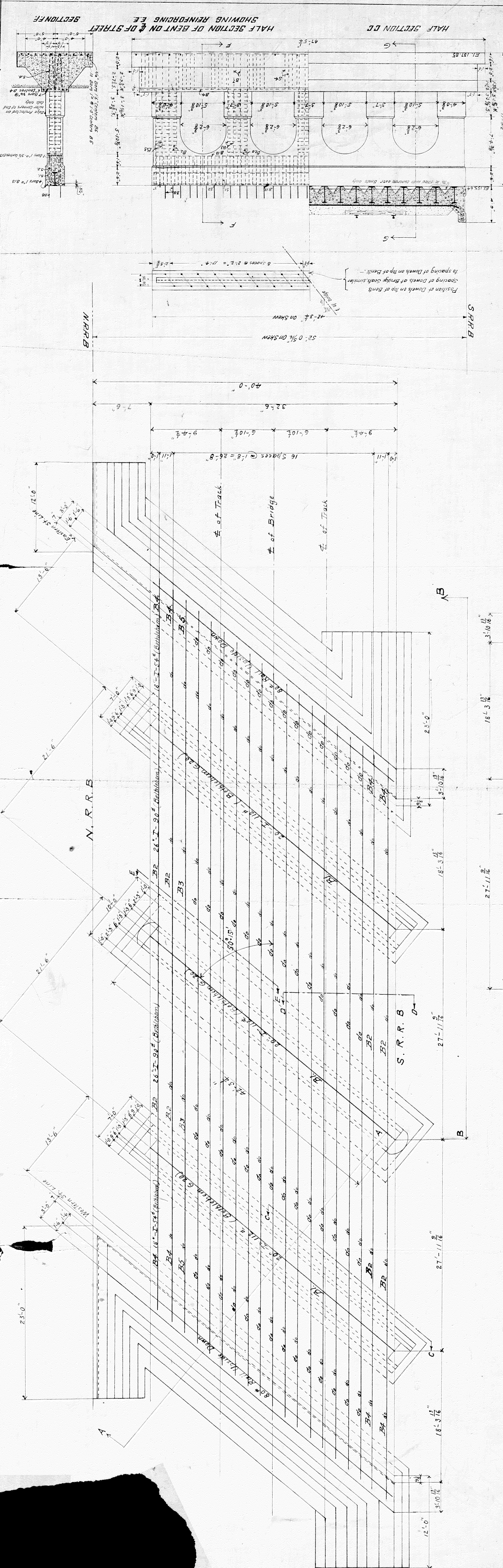
DETROIT LUBRICATOR CO.



File XU 7-2(a)  
SCALE, ONE INCH = 20'

CITY ENGINEER'S OFFICE  
MAY 1910





GRAND TRUNK RAILWAY SYSTEM  
 DETROIT DIVISION 28<sup>th</sup> DISTRICT  
 Bridge No. 101  
 OVER  
 LINCOLN AVENUE  
 WEST DETROIT - GRADSEPARATION  
 Designed by P. B. Williams  
 Checked by J. L. G. 1915  
 Office of Chief Engineer, Montreal, July 21, 1915  
 Sheet No. 1 of 3

File XUT-3

REINFORCING IN FLOOR JOIST  
 Note - Reinforcing over 18" dia. bars as shown in above section for 2.6" dia. bars

NO. 4  
 Concrete in floor - 1-3-5  
 Concrete in girders - 1-2-4