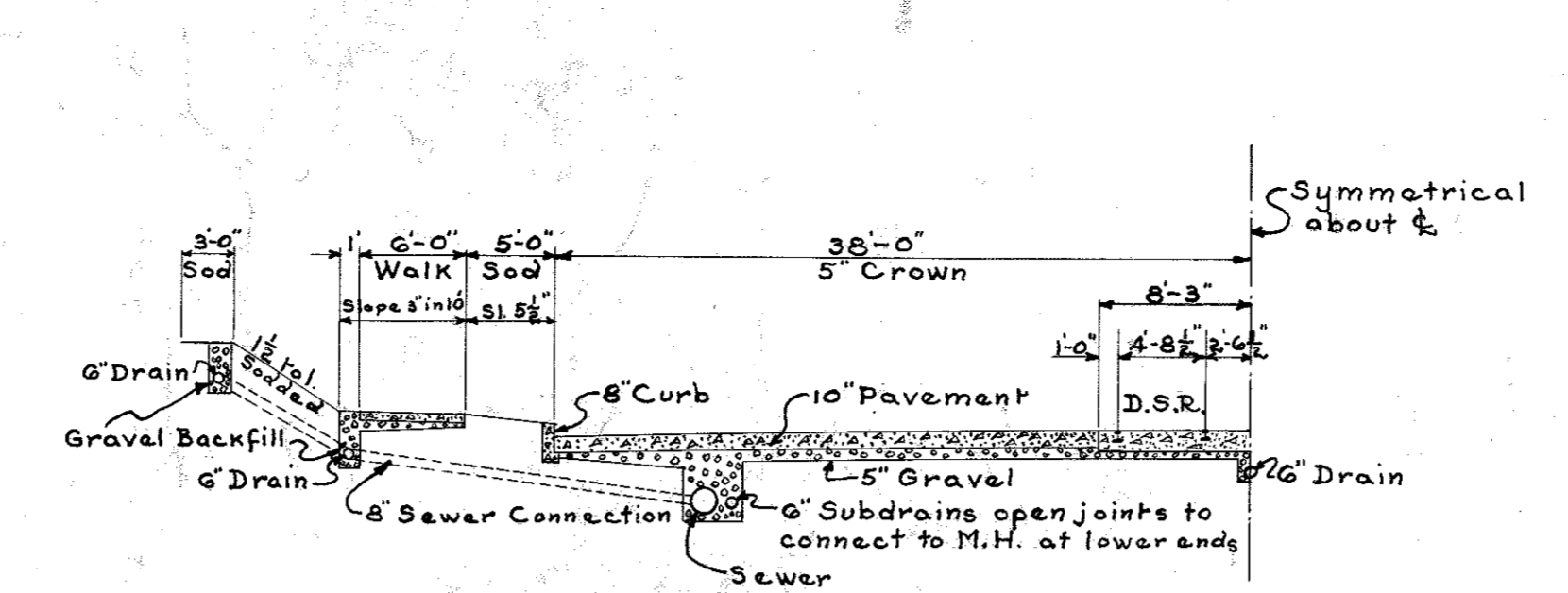
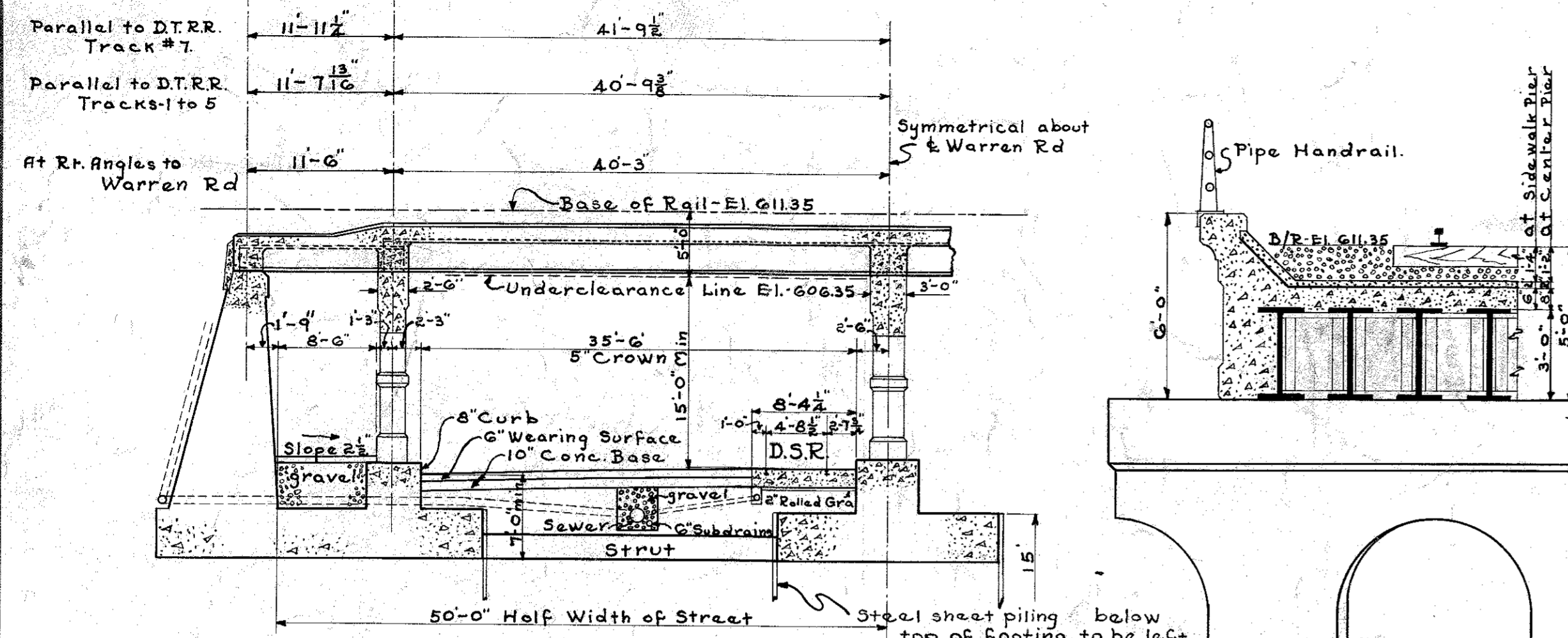


EXHIBIT "A"

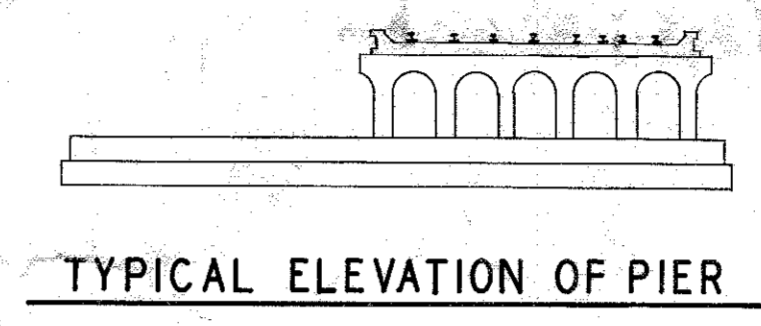
APPROVED: Engr. Manager for Board of Wayne Co. Rd. Com.
 APPROVED: City Engineer for City of Detroit.
 APPROVED: City Engineer for City of Dearborn.
 APPROVED: Chief Engineer for the Detroit Terminal R.R.
 APPROVED: General Manager of the Board of Street Railway Commissioners for the City of Detroit.



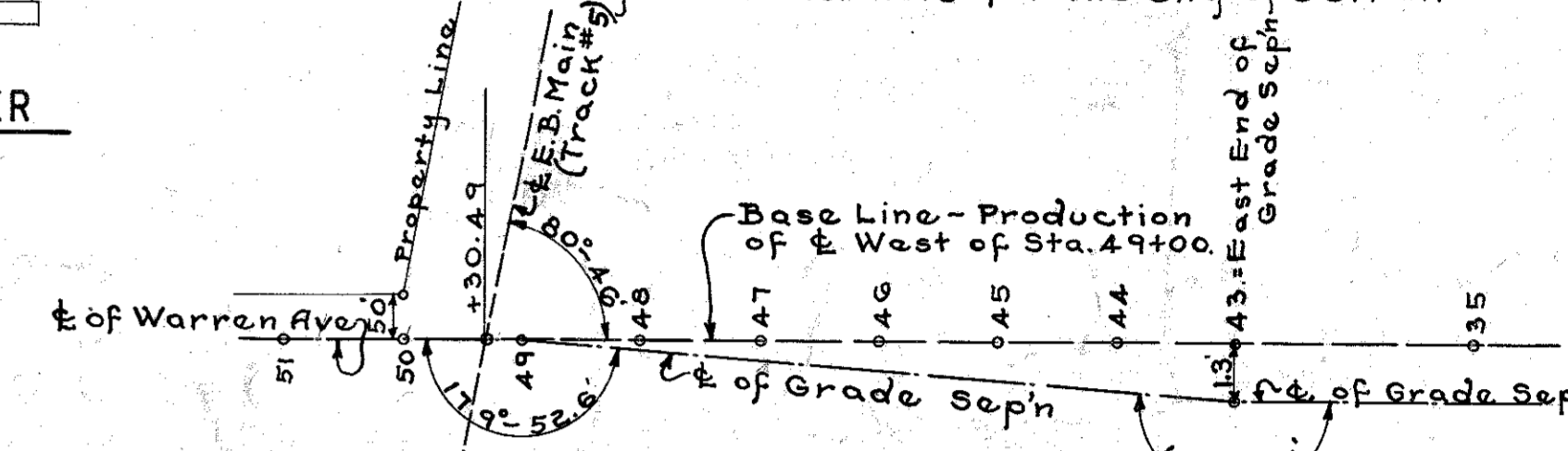
HALF SECTION OF WARREN ROAD ON APPROACHES
 Scale = 1" = 1'-0"

HALF SECTION OF WARREN ROAD AT BRIDGE
 Scale = 1" = 10'

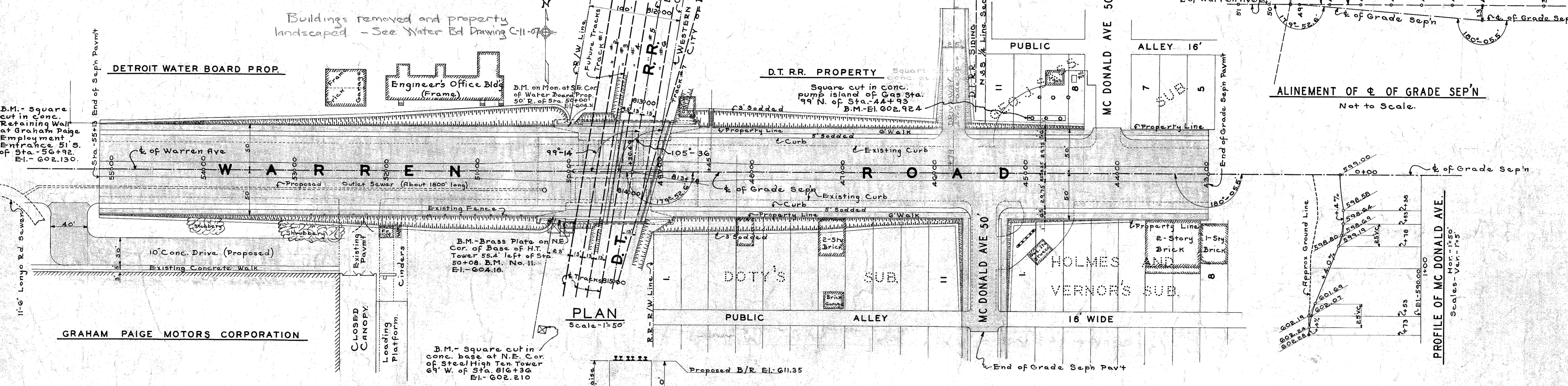
TYPICAL SECTION THRU DECK
 Scale = 1/4" = 1'-0"



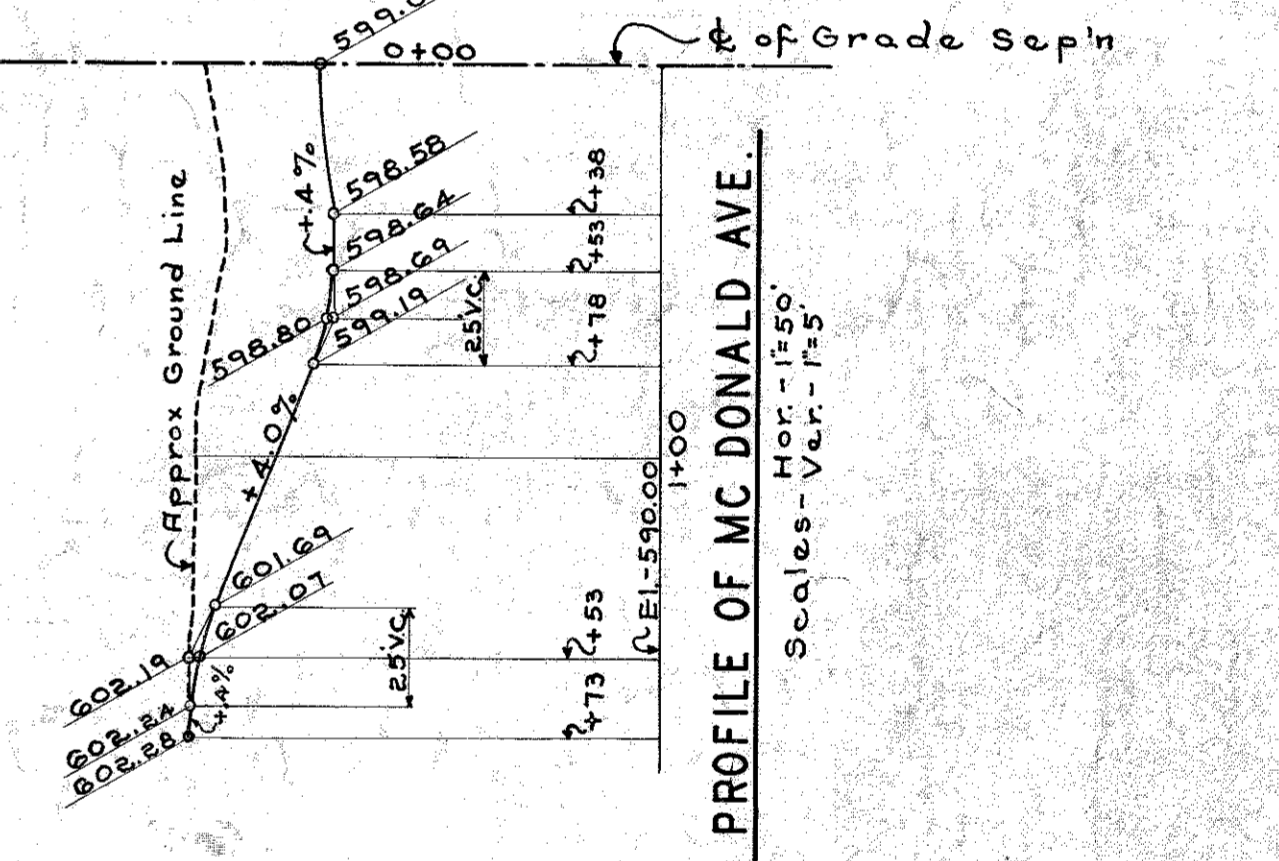
TYPICAL ELEVATION OF PIER



ALINEMENT OF & OF GRADE SEPN
 Not to Scale.



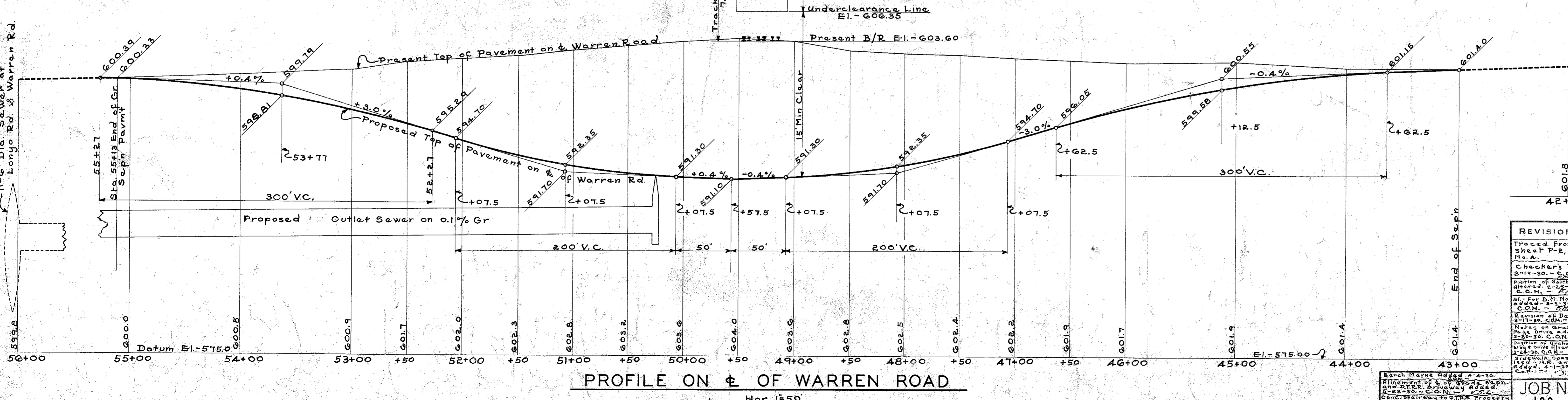
PLAN
 Scale = 1" = 50'



PROFILE OF MC DONALD AVE.
 Scales - Hor. - 1" = 50' - Ver. - 1" = 5'

GRAPHIC SCALE IN FEET

NOTE:--
 Elevations shown on this sheet refer to Detroit Water Board Datum. To obtain City of Fordson Datum subtract. D.T.R.R. Datum same as City of Fordson.



PROFILE ON & OF WARREN ROAD
 Scales: - Hor. 1" = 50' - Ver. 1" = 5'

NO.	DESCRIPTION
1	Traced from Sheet P-2, Issue No. A.
2	Checked by Raw 2-11-30 - G.M.
3	Checked by Raw 2-11-30 - G.M.
4	Checked by Raw 2-11-30 - G.M.
5	Checked by Raw 2-11-30 - G.M.

BOARD OF WAYNE COUNTY ROAD COMMISSIONERS
 DETROIT, MICHIGAN
 WM. F. BUTLER CHAIRMAN
 JOHN S. HAGERTY COMMISSIONER
 EDWARD N. HINES, COMMISSIONER

GENERAL DRAWING
 WARREN ROAD-MILE:
 D.T.R.R. GRADE SEPN X2 OF 82-22-36.

DESIGNED BY: DATE: 2-11-30 SCALE: As Shown CORRECT: S.L.H. FINE CHIEF DESIGNER
 DRAWN BY: J.W.C. & C.P.M.
 JOB NO. 169
 ISSUE NO. 1
 DATE: 2-23-30
 APPROVED: [Signature] REG. CIV. ENGR.
 APPROVED: [Signature] REG. CIV. ENGR.