

GEORGE L. JOHNSON Co.

H.P.G. BLDG

HOLDEN AVE

Grand Trunk R.R. Bridge

Penn. Central R.R. Bridge

Penn. Central R.R. Bridge

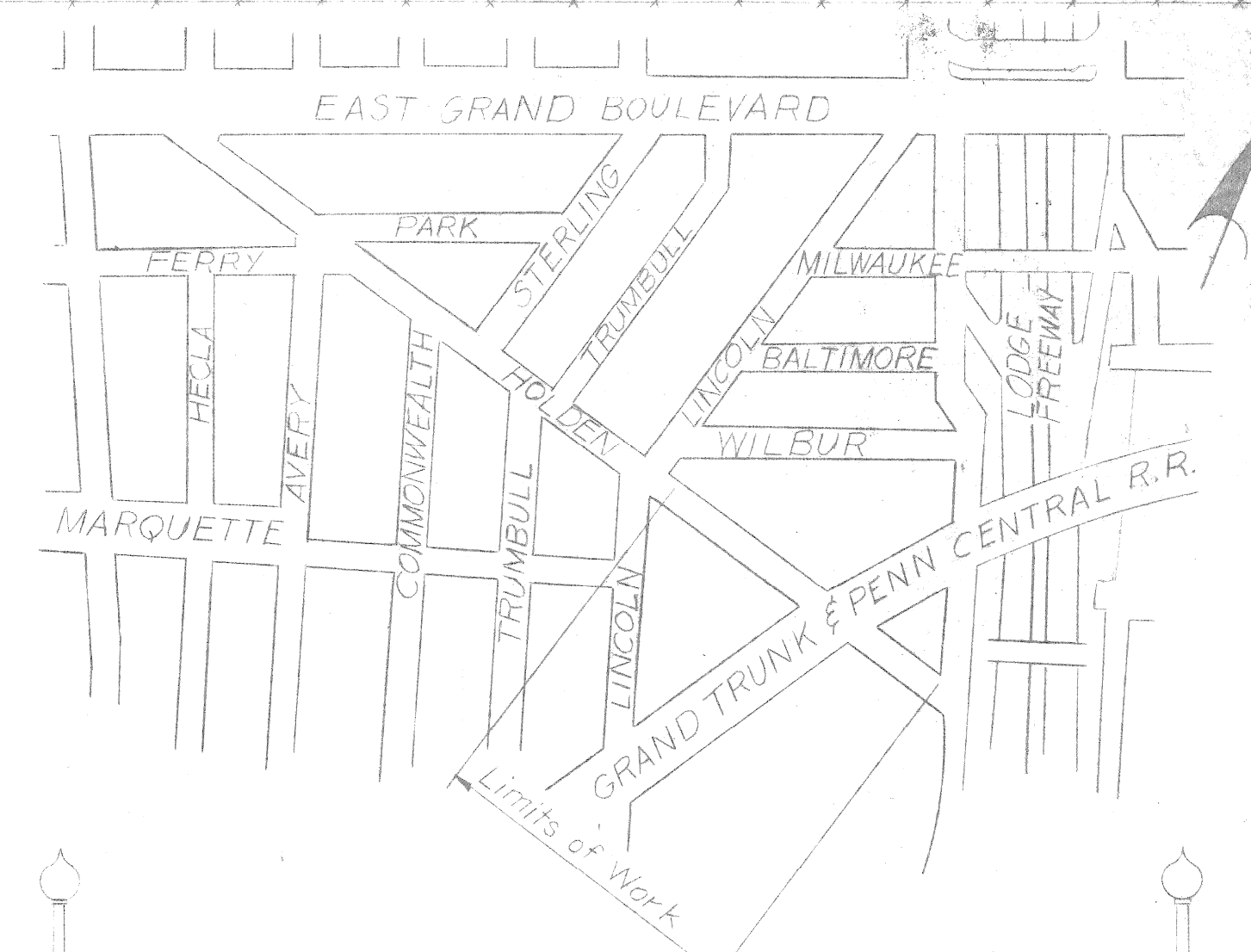
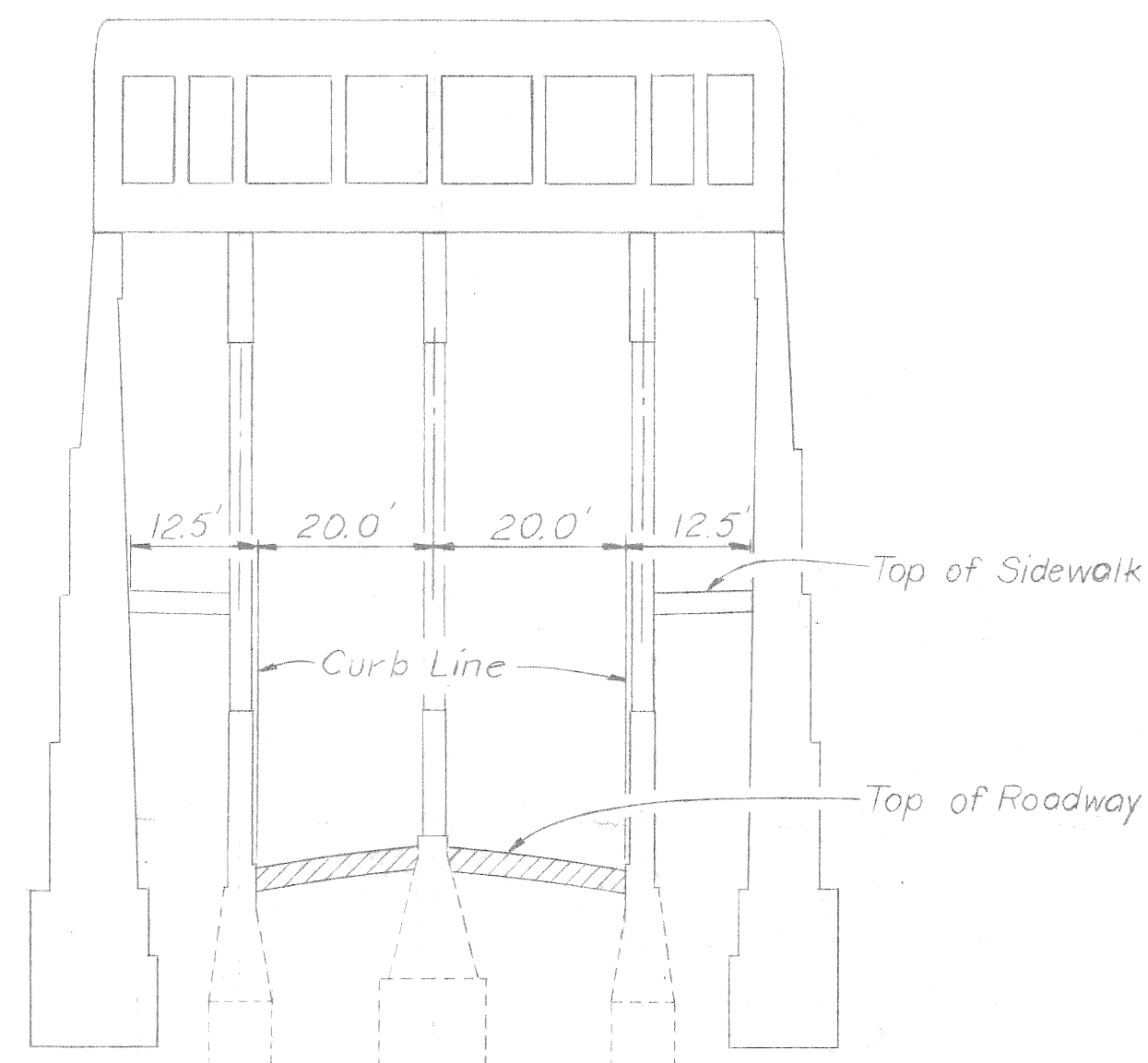
GROSSE POINTE QUALITY FOOD Co.

SURVEY PLAN
Scale: 1"=20'

LEGEND

- Catch Basin
- Water Gate
- Water Shut-off
- P.L.C. Manhole
- Fire Hydrant
- D.E. Pole
- P.L.C. Pole
- P.L.C. Light Pole
- Fence
- Sewer Manhole

EAST GRAND BOULEVARD



El. 138.00

Existing Ground
Top of Sidewalk

SECTION A-A
Scale: Horiz. 1"=20'
Vert. 1"=4'

3-Tube Steel Railing (Existing)

Top of Curb

Top of Roadway

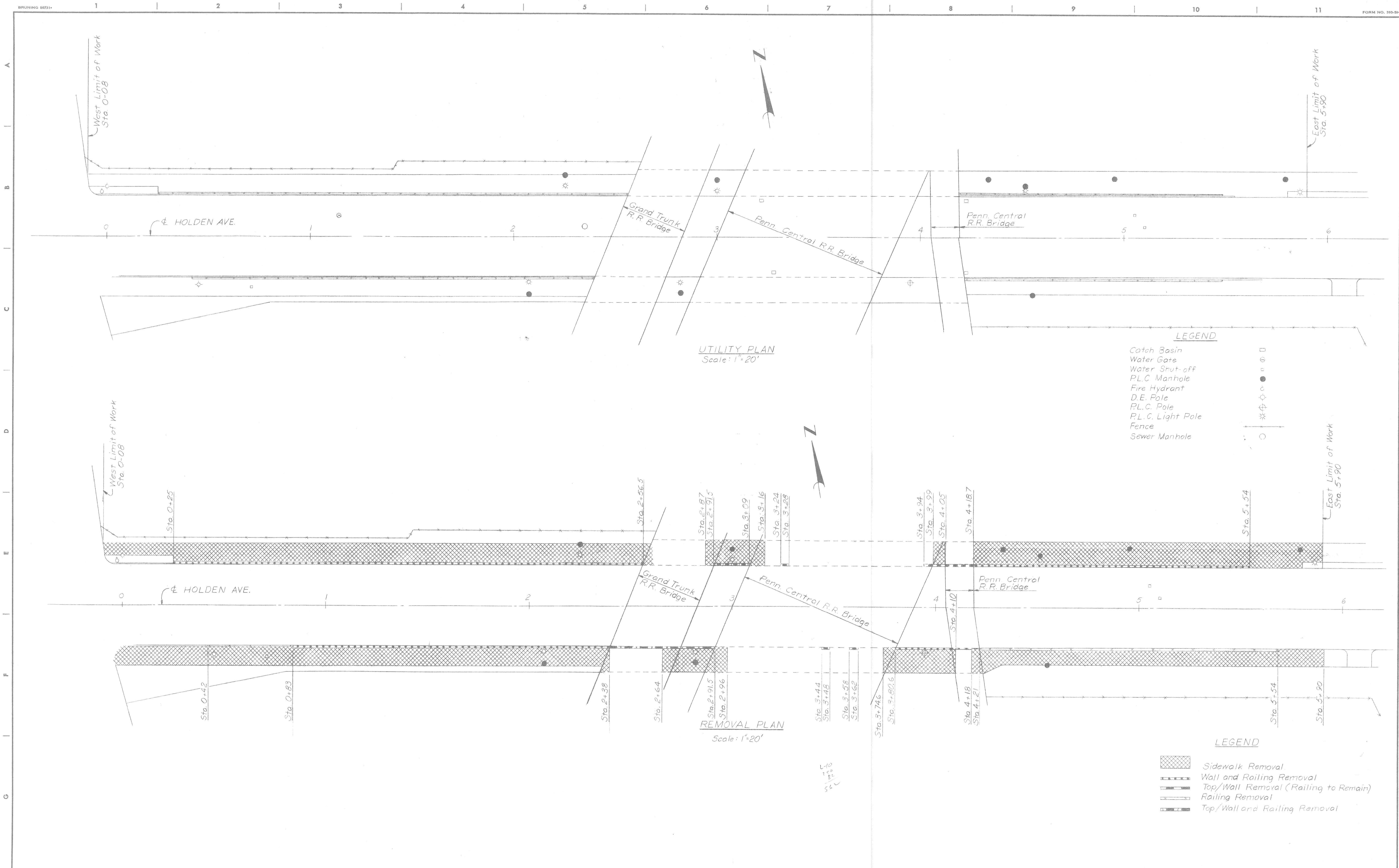
Top of Sidewalk

El. 140.00

PROFILE ALONG HOLDEN AVE. AT NORTH CURB LINE

Scale: Horiz. 1"=20'
Vert. 1"=4'

DESIGNED BY W.A.L.		APPROVED:		CITY OF DETROIT DEPARTMENT OF PUBLIC WORKS CITY ENGINEERS OFFICE	HOLDEN AVE. UNDER BRIDGE XU-6 PENN CENTRAL & GRAND TRUNK WESTERN, R.R.	SHEET 1 OF 4 SHEETS
DRAWN BY L.G.						CONTRACT NO.
TRACED BY						DRWG NO.
CHECKED BY R.I.E.		CITY ENGINEER				DATE 11-22



UTILITY PLAN
Scale: 1"=20'

REMOVAL PLAN
Scale: 1"=20'

LEGEND

- Catch Basin
- Water Gate
- Water Shut-off
- P.L.C. Manhole
- Fire Hydrant
- D.E. Pole
- P.L.C. Pole
- P.L.C. Light Pole
- Fence
- Sewer Manhole

LEGEND

- Sidewalk Removal
- Wall and Railing Removal
- Top/Wall Removal (Railing to Remain)
- Railing Removal
- Top/Wall and Railing Removal

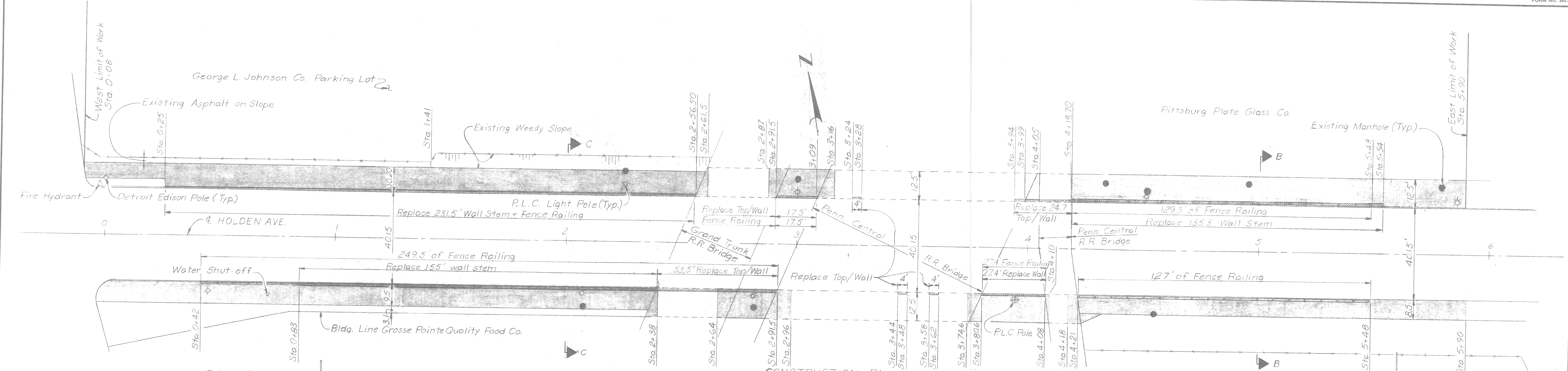
COORD.	DESCRIPTION	DRN	CRD	APPROV	DATE
1	REVISIONS LOCATED BY COORDINATES ON SHEET				

DESIGNED BY	W.A.L.	APPROVED:	
DRAWN BY	L.G.		
TRACED BY			
CHECKED BY	RRB		

CITY OF DETROIT
 DEPARTMENT OF PUBLIC WORKS
 CITY ENGINEERS OFFICE
 WALL, SIDEWALK & RAILING REPAIR

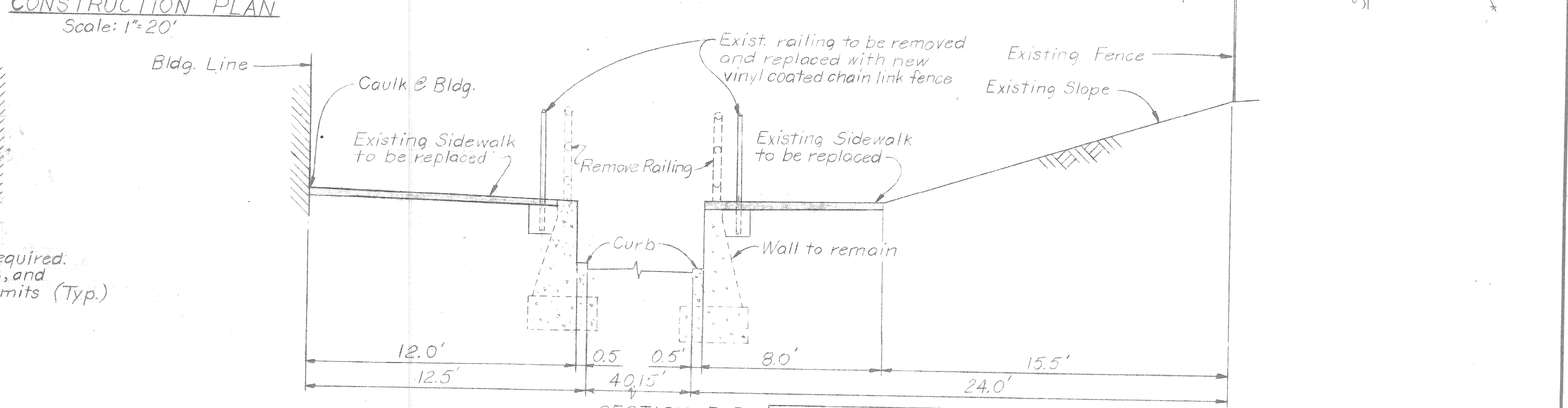
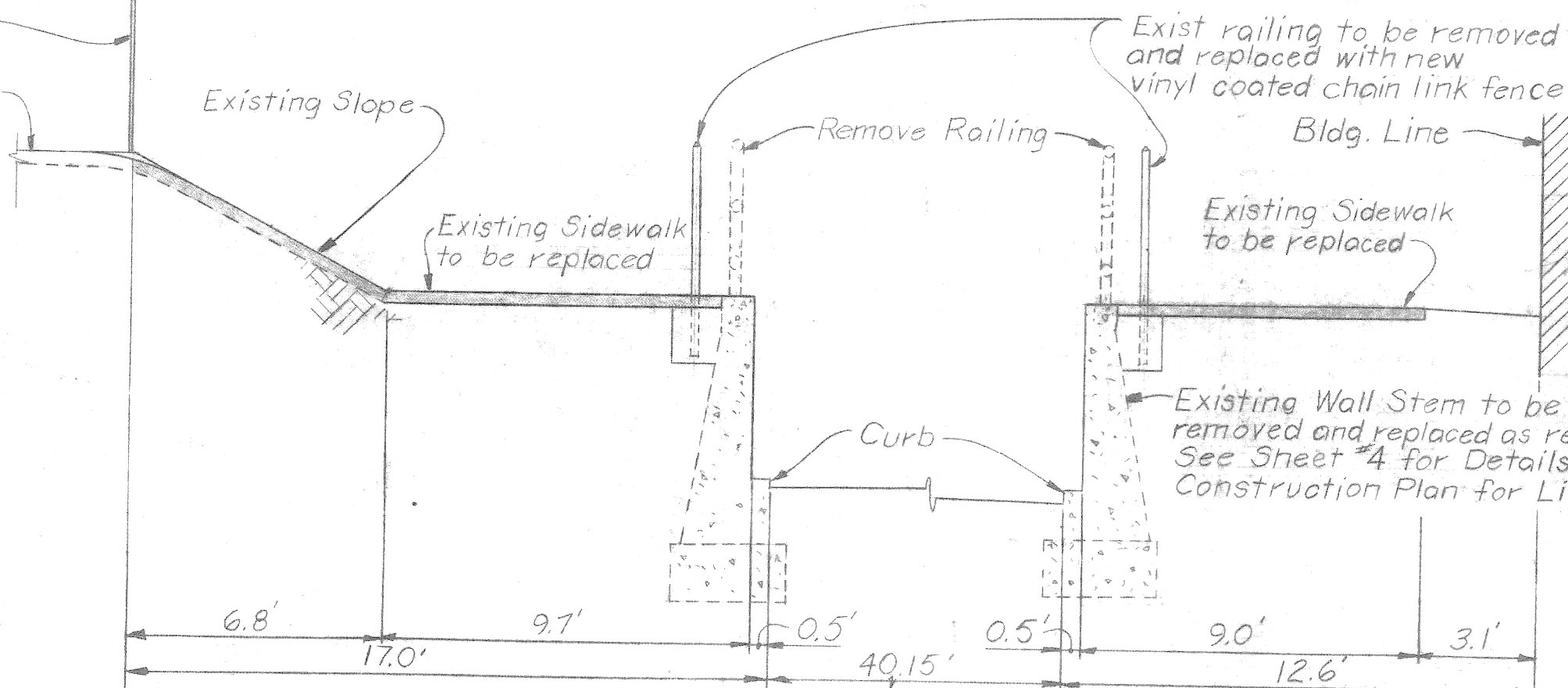
HOLDEN AVE. UNDER BRIDGE XU-6
 PENN CENTRAL & GRAND TRUNK WESTERN R.R.
 UTILITY PLAN & REMOVAL PLAN

SHEET 2 OF 4 SHEETS
CONTRACT No.
DRWG No.
DATE 11-72

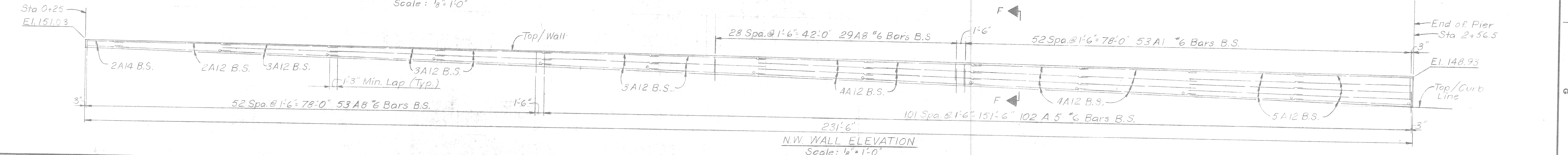
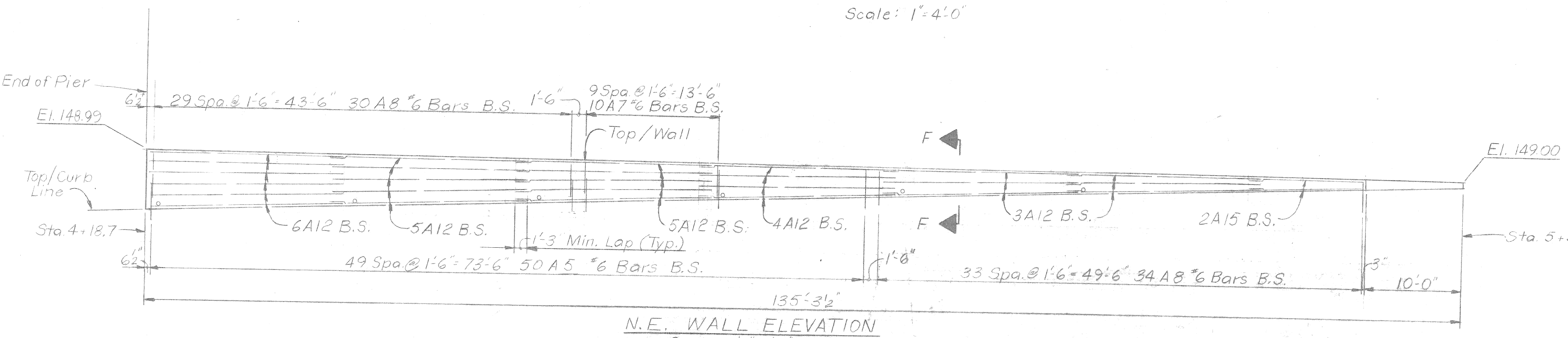


Notes:
 Blend proposed slope into existing slope (Sta. 0+08 to Sta. 1+41)
 Proposed concrete slope paving is to meet asphalt paving of G.L. Johnson Co., and sidewalk adjacent to P.P.G. Co.

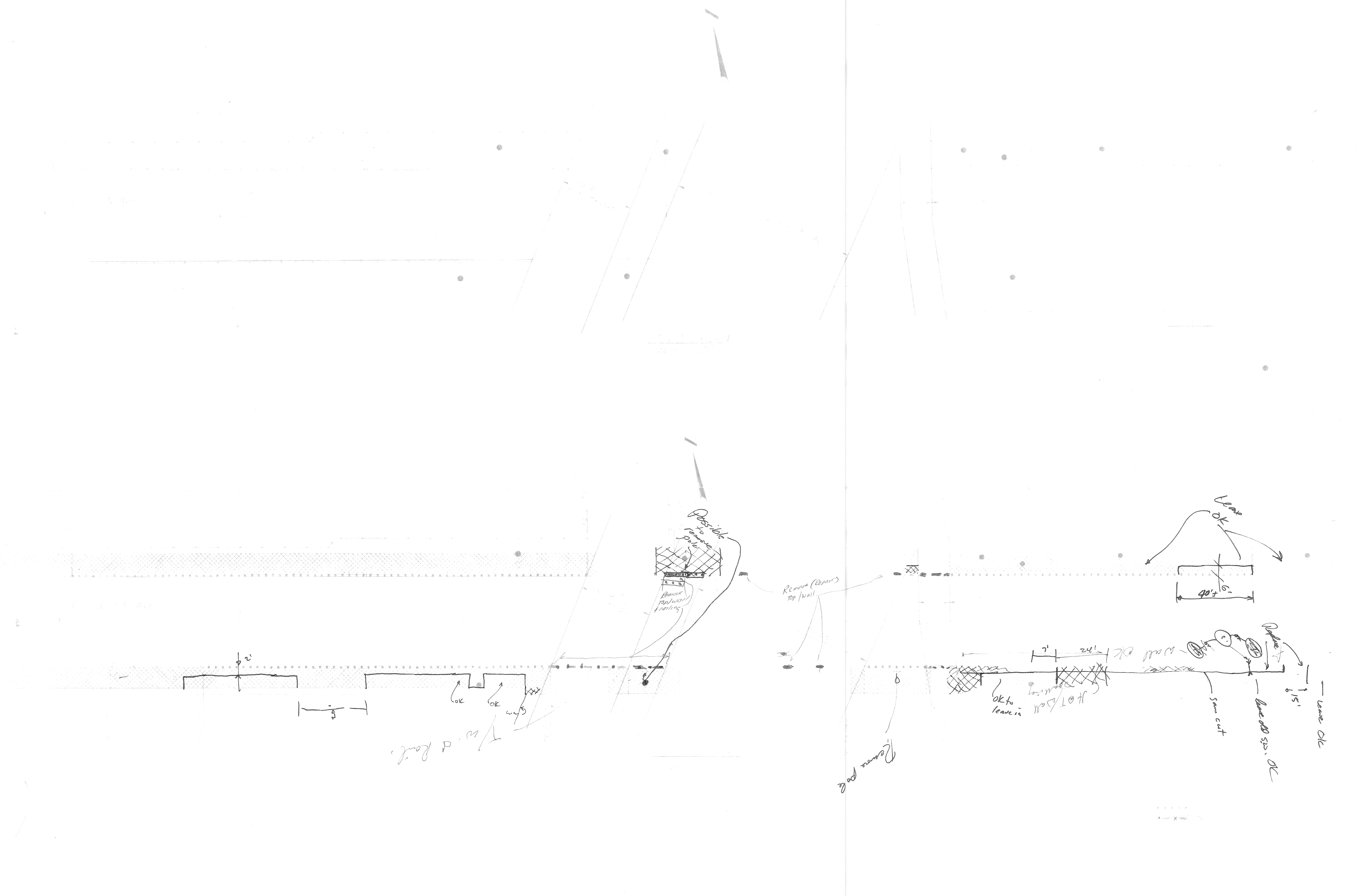
LEGEND
 - Replaced Concrete Sidewalk
 - Wall Stem Replacement (all or partial)



Item	Unit	QUANTITIES						Total
		S.E.	S.under Bldg.	S.W.	N.E.	N.under Bldg.	N.W.	
Removal and Replace								
Sidewalk	Sq. Yds.	164	87	232	216	40	261	1000
Wall Stem 0 to 30'	Lin. Ft.	0	25	21	46	94	186	
Wall Stem > 30'	Lin. Ft.	0	89	130	114	0	139	471
Railing	Lin. Ft.	127	27	290	130	18	232	784
New Items								
Utility (P.L.C.) Lump Sum								
2" Fire Line Each		0	3	8	6	0	11	28
Sand Drain	Cu. Yds.	0	1	2	5	0	9	21



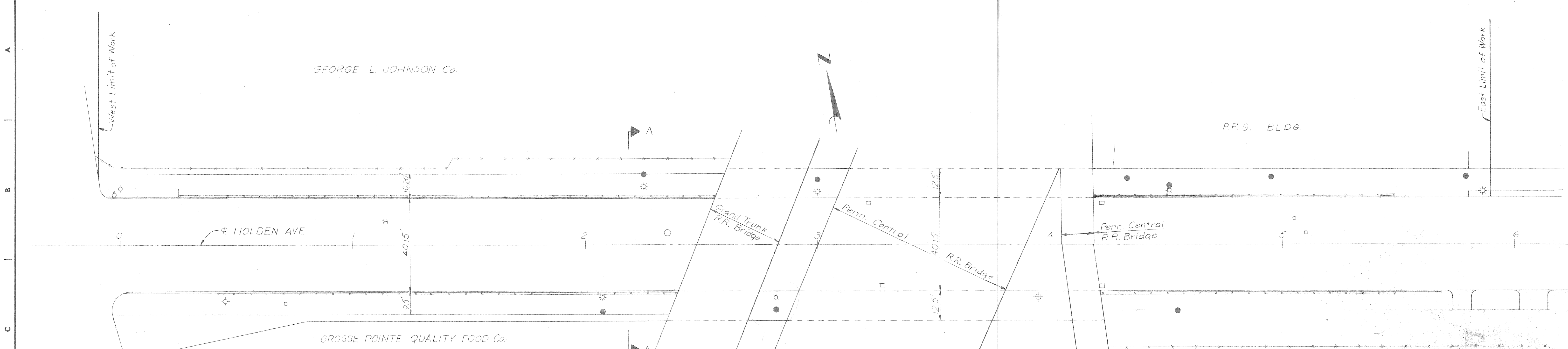
DESIGNED BY W.A.L.	APPROVED:	CITY OF DETROIT DEPARTMENT OF PUBLIC WORKS CITY ENGINEERS OFFICE WALL, SIDEWALK & RAILING REPAIR	HOLDEN AVE. UNDER BRIDGE XU-6 PENN CENTRAL & GRAND TRUNK WESTERN R.R. REPAIR PLAN	SHEET 3 OF 4 SHEETS
DRAWN BY L.G.				CONTRACT No.
TRACED BY				DRWG No.
CHECKED BY RRB				DATE 11-72



1/2" = 1' d. Root.

Sheet 11-10-11

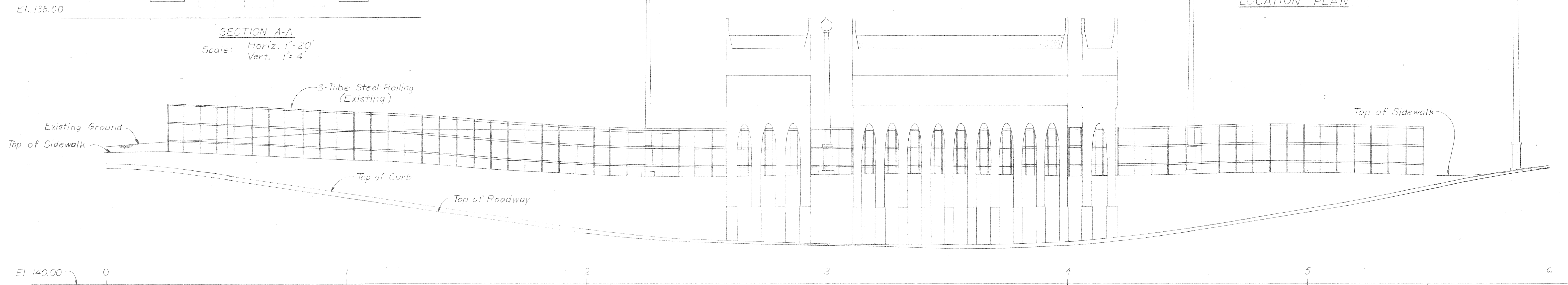
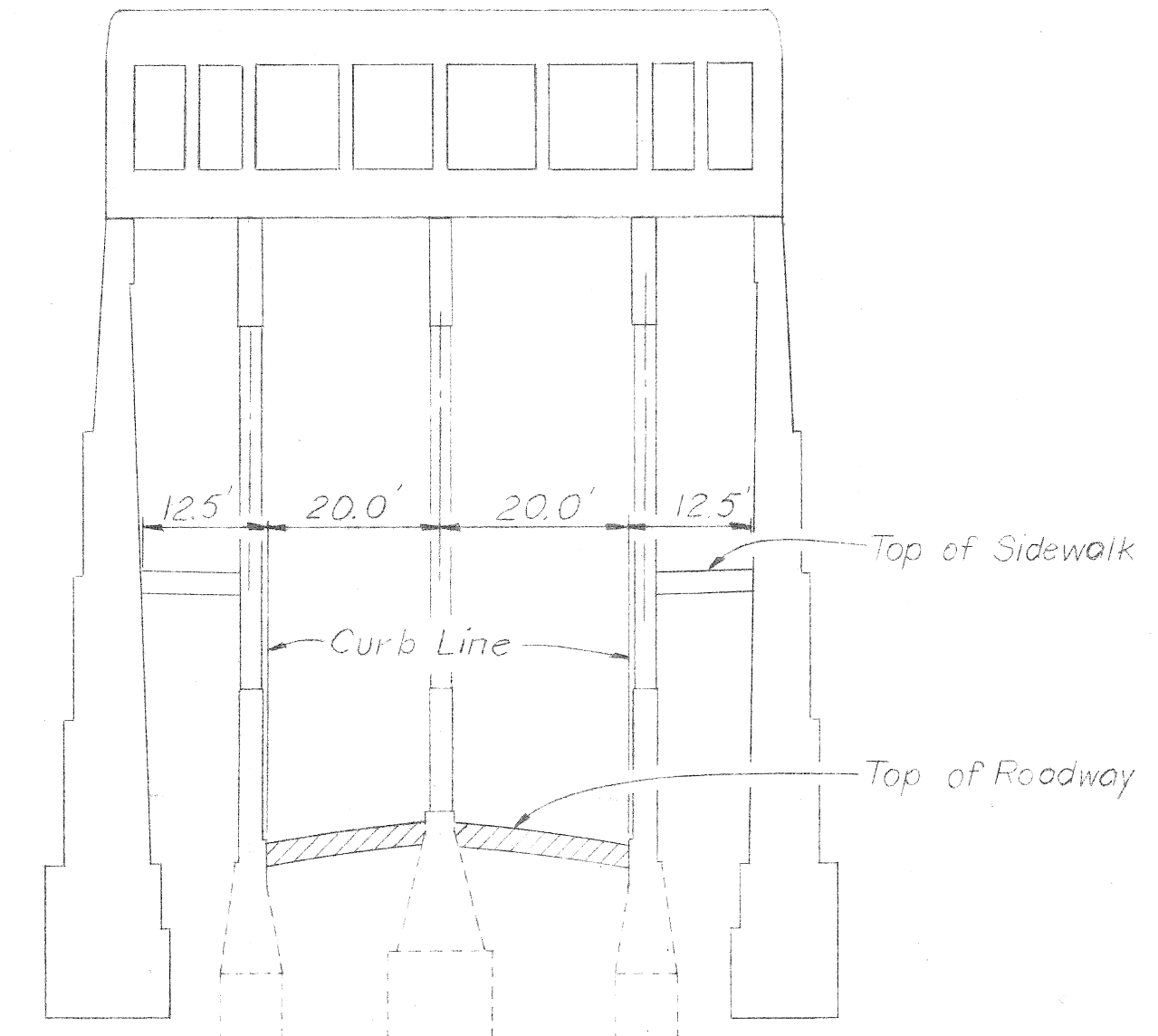
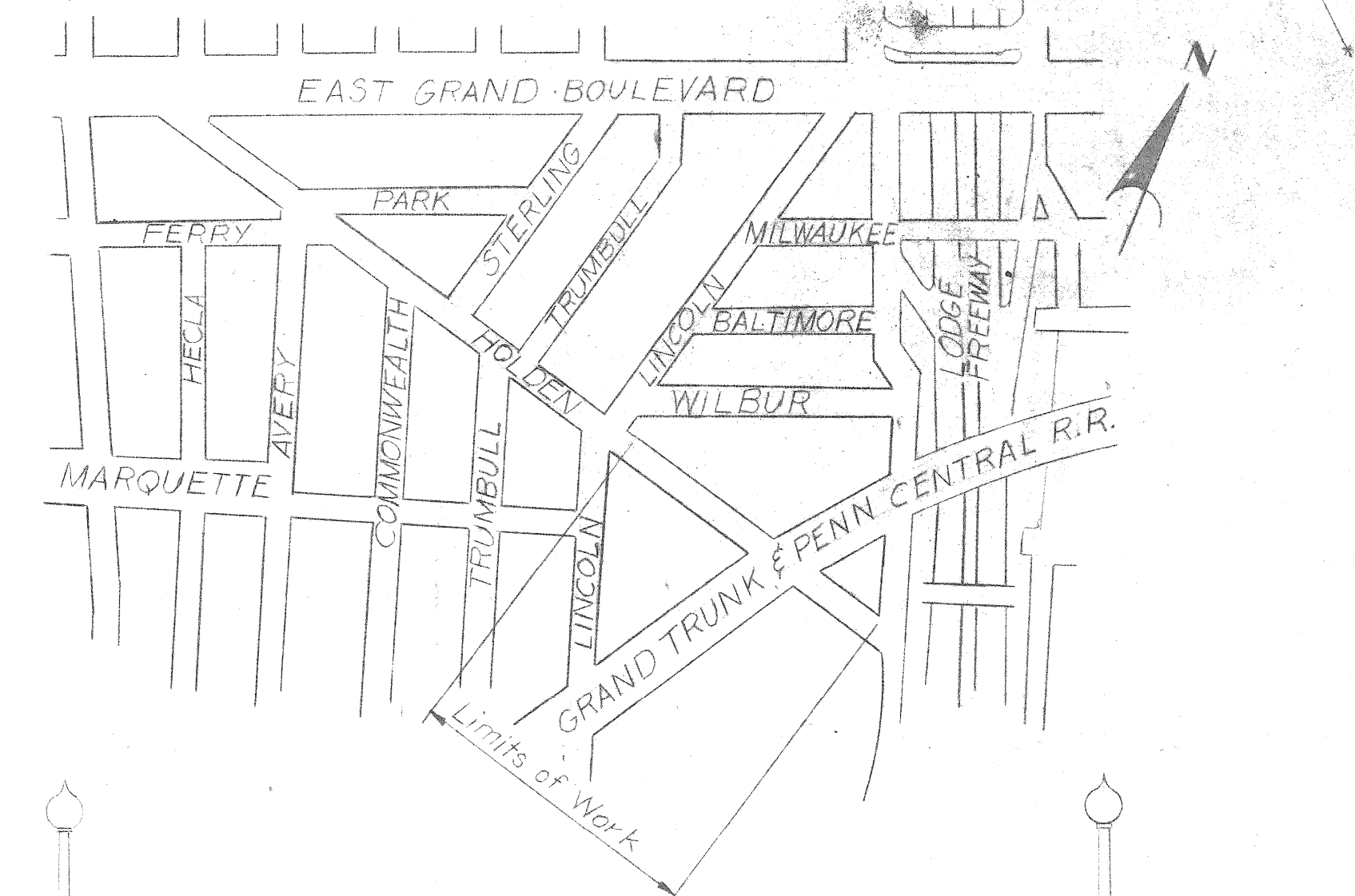
	DESIGNED BY	APPROVED:	<p align="center">CITY OF DETROIT DEPARTMENT OF PUBLIC WORKS CITY ENGINEERS OFFICE</p>	SHEET ___ OF ___ SHEETS
	DRAWN BY			CONTRACT No.
	TRACED BY			DRWG NO.
	DATE			DATE



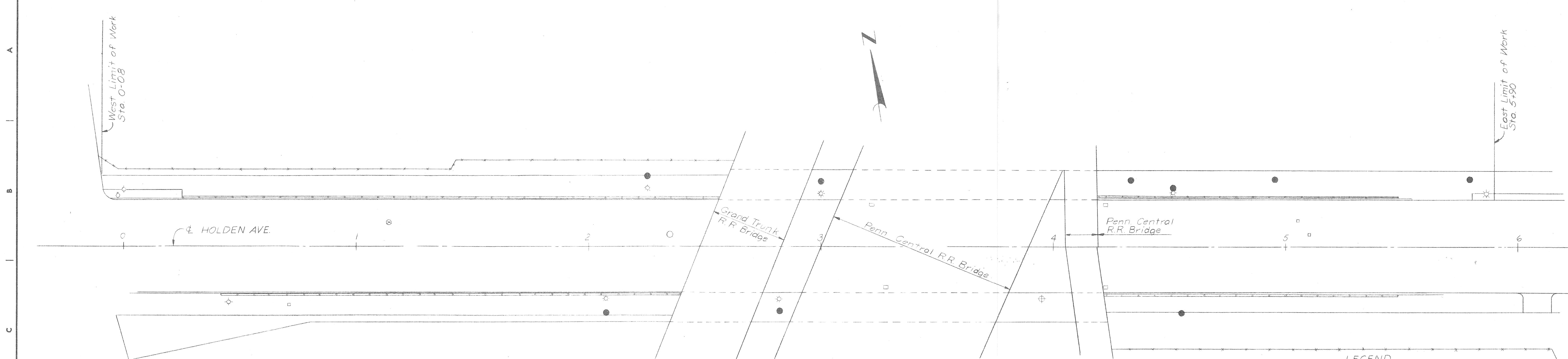
SURVEY PLAN
Scale: 1"=20'

LEGEND

- Catch Basin
- Water Gate
- Water Shut-off
- P.L.C. Manhole
- Fire Hydrant
- D.E. Pole
- P.L.C. Pole
- P.L.C. Light Pole
- Fence
- Sewer Manhole

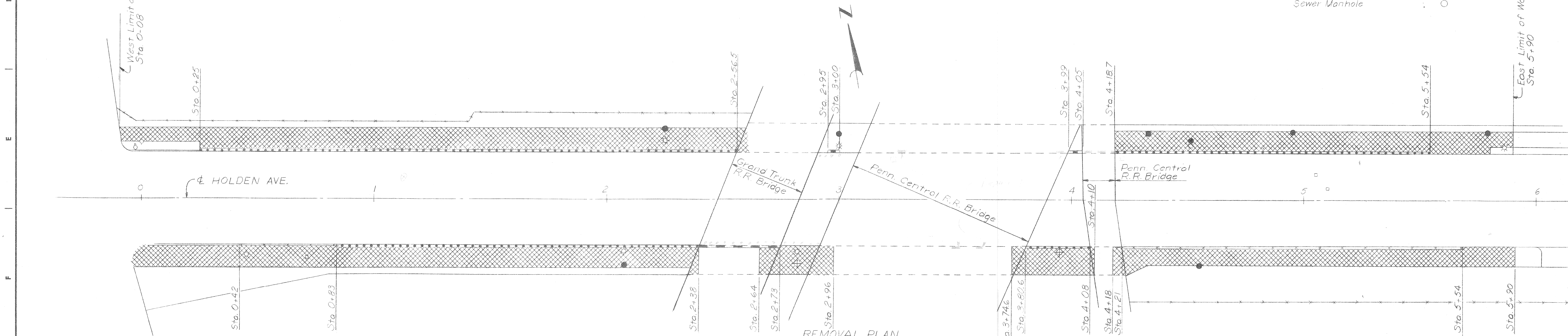


DESIGNED BY <i>W.A.L.</i> DRAWN BY <i>L.G.</i> TRACED BY CHECKED BY <i>RRB</i>		APPROVED: CITY ENGINEER	CITY OF DETROIT DEPARTMENT OF PUBLIC WORKS CITY ENGINEERS OFFICE	HOLDEN AVE. UNDER BRIDGE XU-6 PENN CENTRAL & GRAND TRUNK WESTERN R.R.	SHEET <u>1</u> OF <u>4</u> SHEETS CONTRACT No. DRWG No. DATE <i>11-72</i>
REVISIONS LOCATED BY COORDINATES ON SHEET			WALL, SIDEWALK & RAILING REPAIR	GENERAL DRAWING	



LEGEND

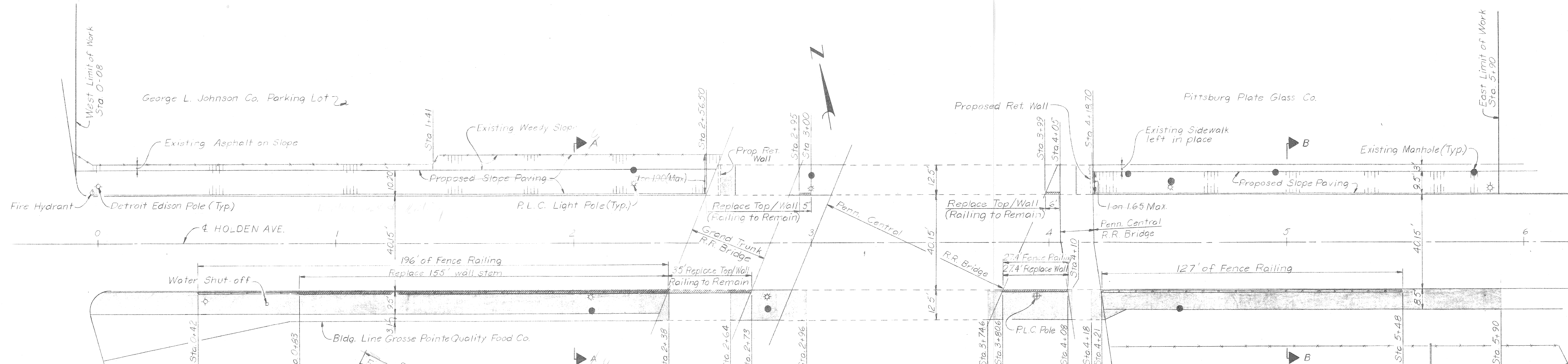
Catch Basin	○
Water Gate	□
Water Shut-off	○
PLC Manhole	○
Fire Hydrant	●
D.E. Pole	⊕
P.L.C. Pole	⊕
P.L.C. Light Pole	⊕
Fence	—
Sewer Manhole	○



LEGEND

	Sidewalk Removal
	Wall and Railing Removal
	Top/Wall Removal (Railing to Remain)
	Railing Removal

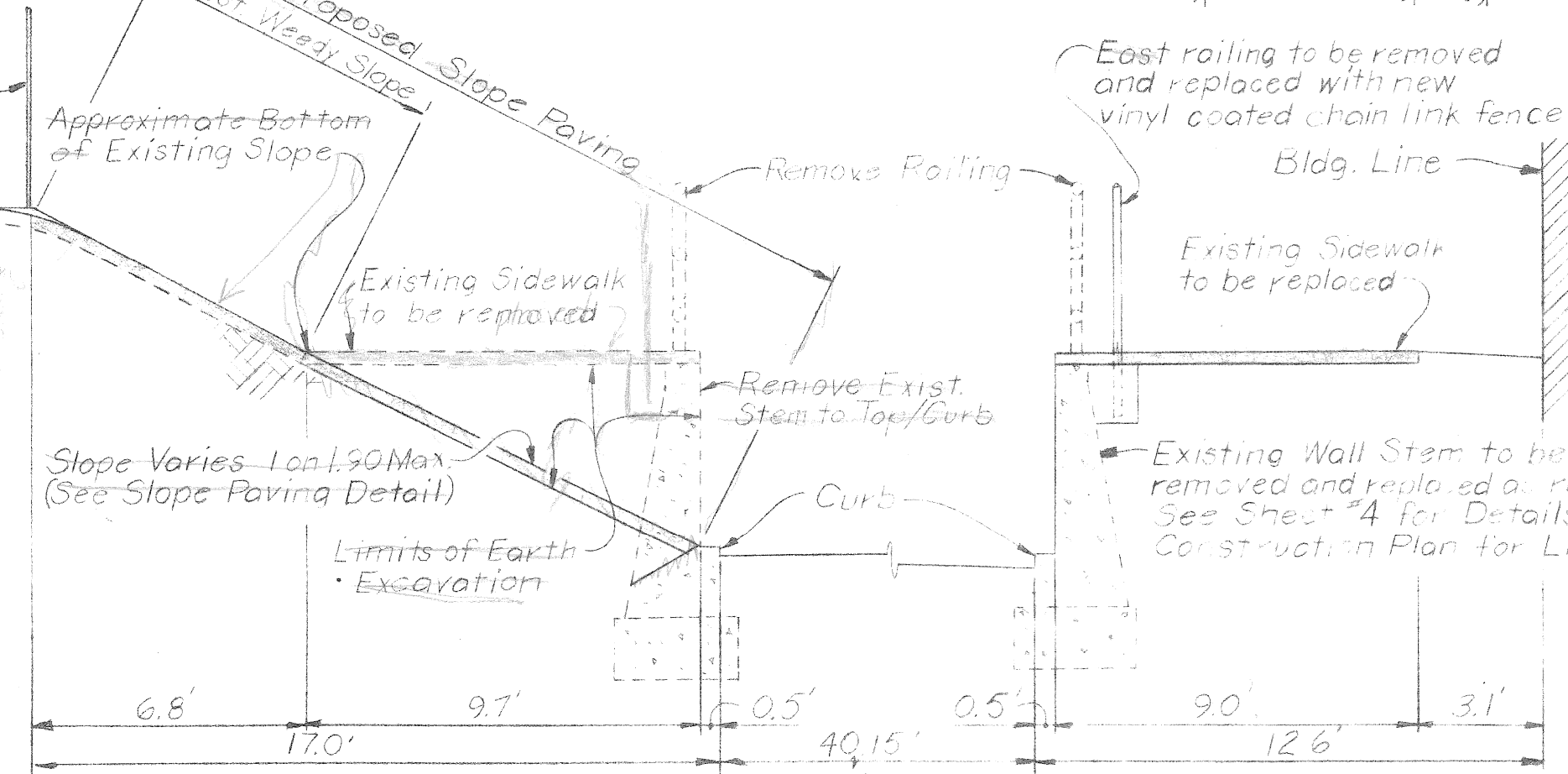
<table border="1"> <tr> <td>DESIGNED BY</td> <td>W.A.L.</td> </tr> <tr> <td>DRAWN BY</td> <td>L.G.</td> </tr> <tr> <td>TRACED BY</td> <td></td> </tr> <tr> <td>CHECKED BY</td> <td>RRB</td> </tr> </table>		DESIGNED BY	W.A.L.	DRAWN BY	L.G.	TRACED BY		CHECKED BY	RRB	<table border="1"> <tr> <td>APPROVED:</td> <td></td> </tr> <tr> <td>CITY ENGINEER</td> <td></td> </tr> </table>	APPROVED:		CITY ENGINEER		<p align="center">CITY OF DETROIT DEPARTMENT OF PUBLIC WORKS CITY ENGINEERS OFFICE</p> <p align="center">WALL, SIDEWALK & RAILING REPAIR</p>	<p align="center">HOLDEN AVE. UNDER BRIDGE XU-6 PENN CENTRAL & GRAND TRUNK WESTERN R.R.</p> <p align="center">UTILITY PLAN & REMOVAL PLAN</p>	<p align="center">SHEET 2 OF 4 SHEETS</p> <p>CONTRACT No.</p> <p>DRWG No.</p> <p>DATE 11-72</p>
DESIGNED BY	W.A.L.																
DRAWN BY	L.G.																
TRACED BY																	
CHECKED BY	RRB																
APPROVED:																	
CITY ENGINEER																	



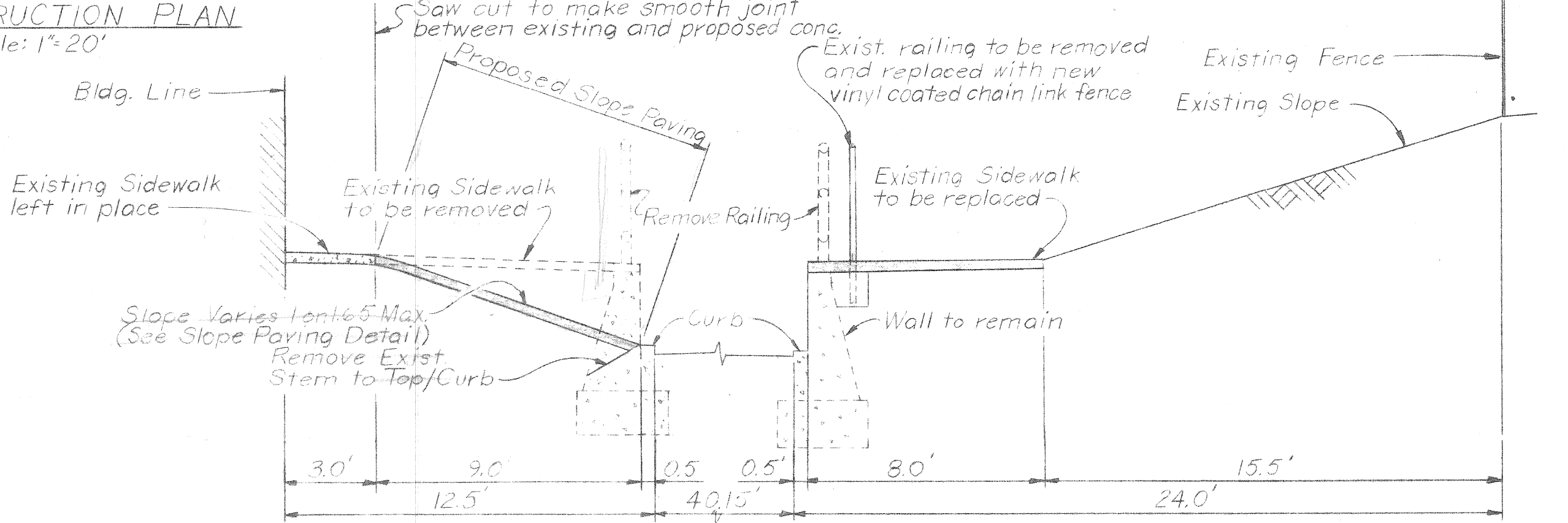
CONSTRUCTION PLAN
Scale: 1"=20'

Notes:
Blend proposed slope into existing slope (Sta. 0+08 to Sta. 1+41)
Proposed concrete slope paving is to meet asphalt paving of G.L. Johnson Co., and sidewalk adjacent to P.P.G. Co.

LEGEND
 - Replaced Concrete Sidewalk
 - Wall Stem Replacement (all or partial)

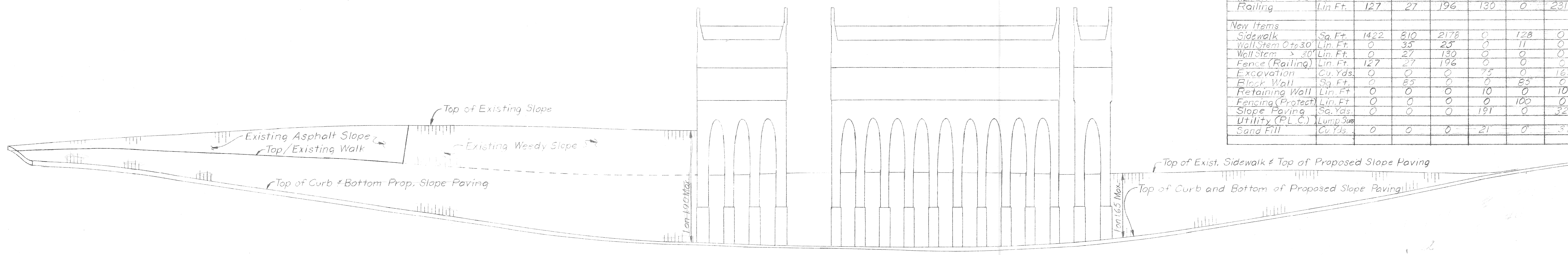


SECTION A-A
Scale: Horiz. 1"=4', Vert. 1"=4'



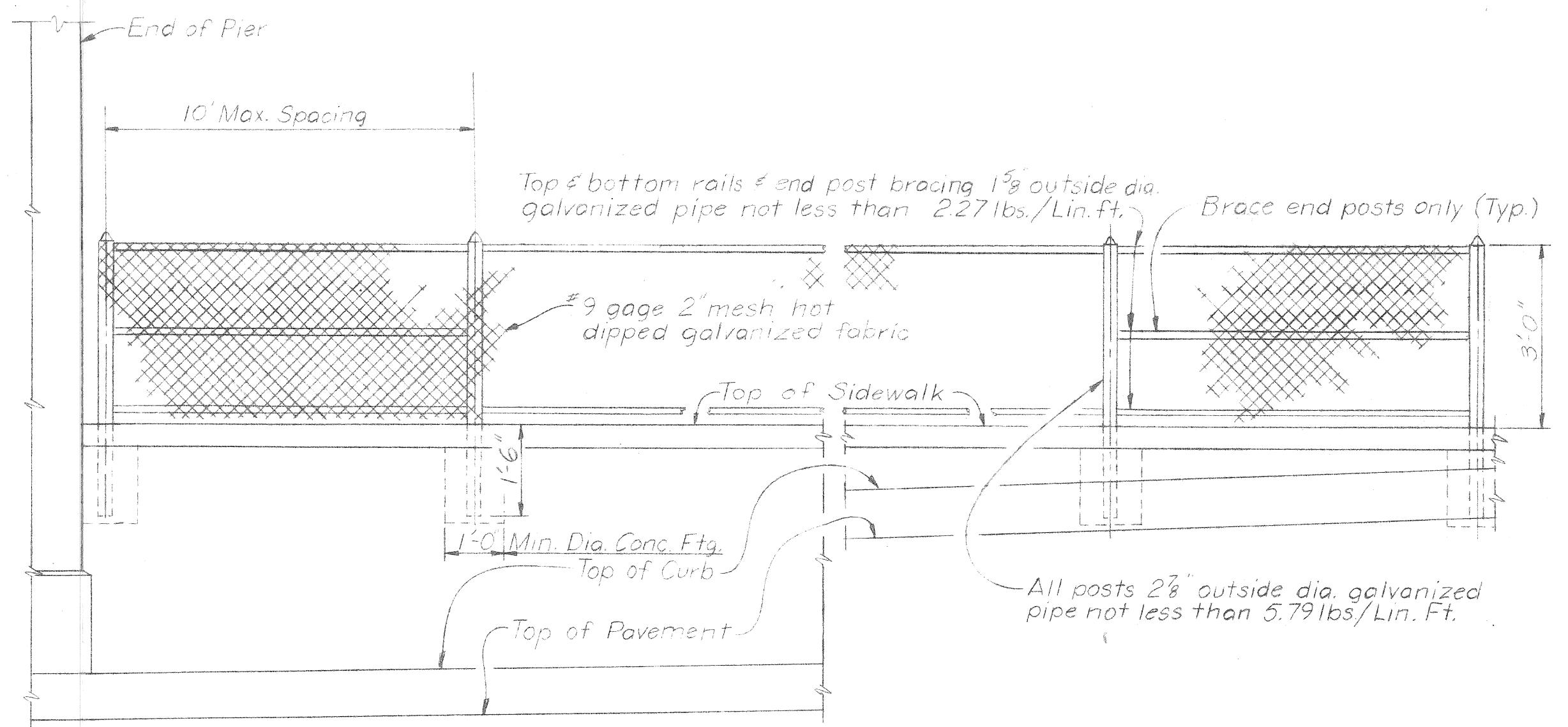
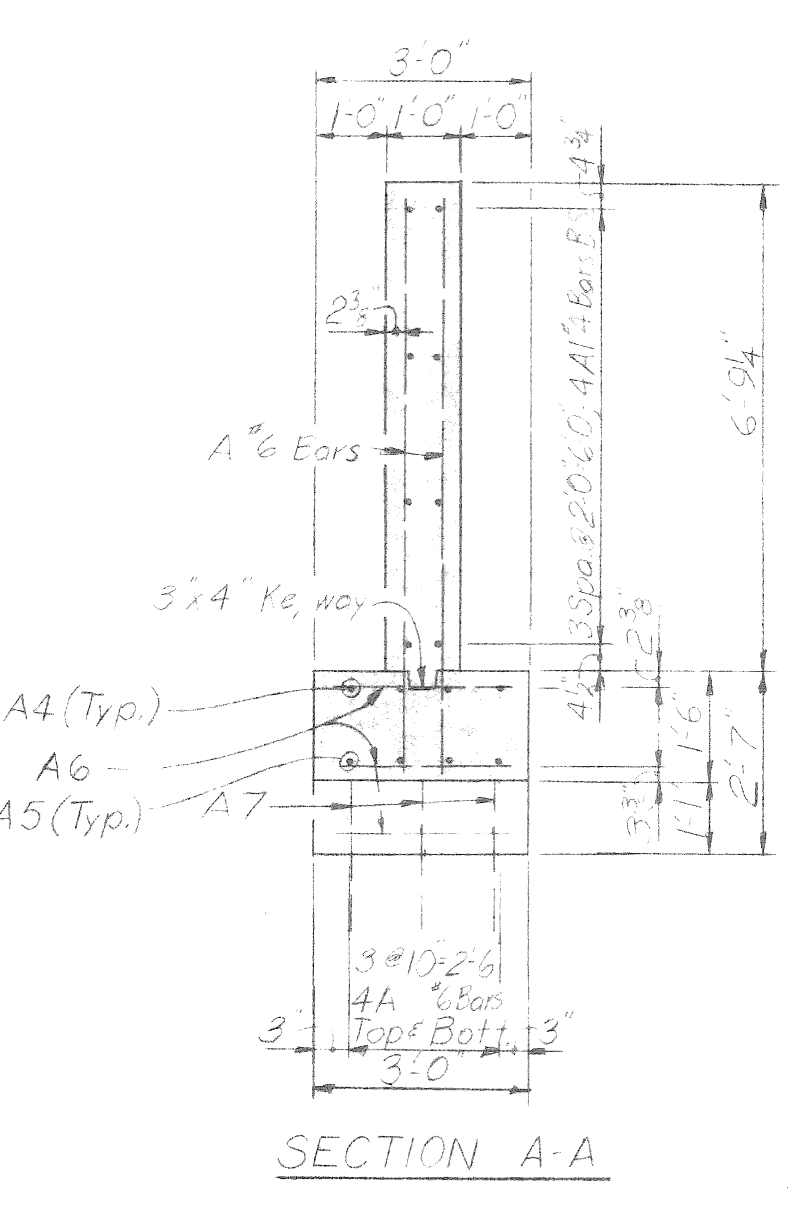
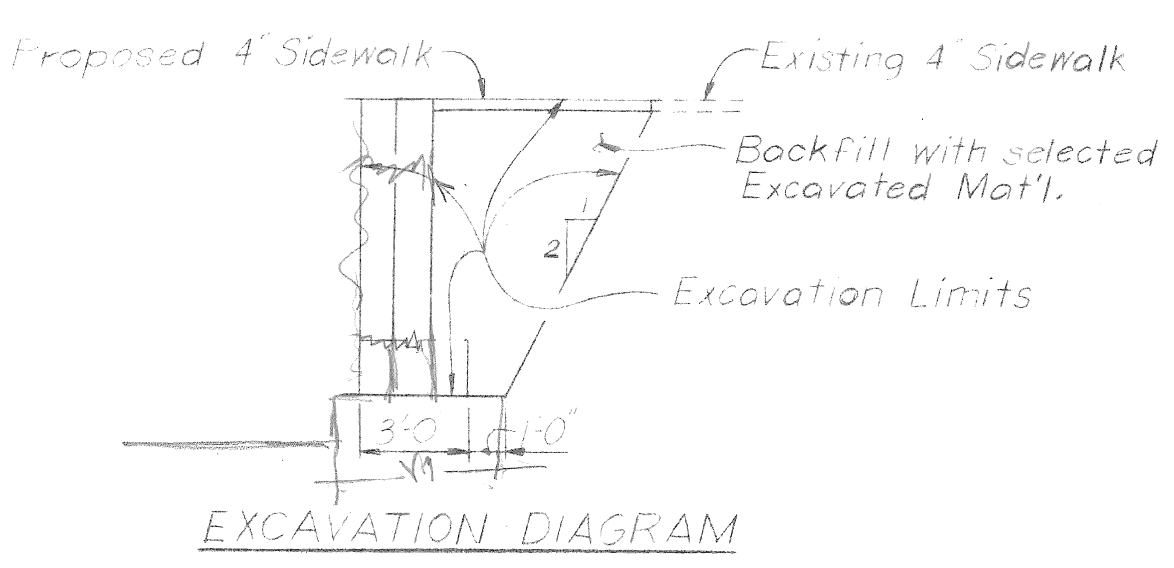
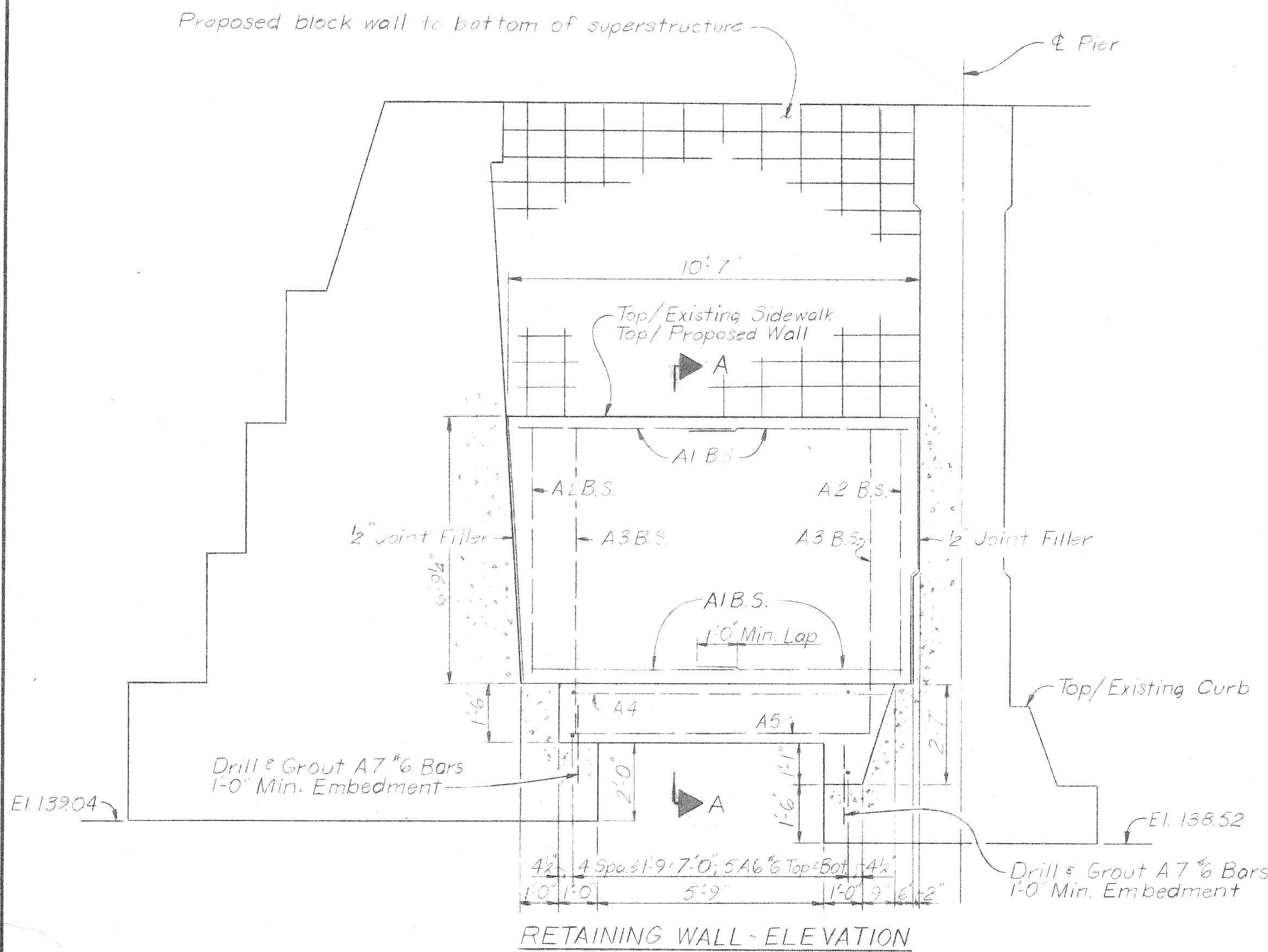
SECTION B-B
Scale: Horiz. 1"=4', Vert. 1"=4'

Item	Unit	QUANTITIES					Total
		S. E.	S. Under Bk	S. W.	N. E.	N. Under Bk	
Removals							
Sidewalk	Sq. Yds.	158	30	242	168	0	930
Wall Stem 0 to 30"	Lin. Ft.	0	35	25	0	11	71
Wall Stem > 30"	Lin. Ft.	0	27	130	0	0	157
Railing	Lin. Ft.	127	27	196	130	0	711
New Items							
Sidewalk	Sq. Ft.	1422	810	2178	0	128	4538
Wall Stem 0 to 30"	Lin. Ft.	0	35	25	0	11	71
Wall Stem > 30"	Lin. Ft.	0	27	130	0	0	157
Fence (Railing)	Lin. Ft.	127	27	196	0	0	380
Excavation	Cu. Yds.	0	0	0	75	0	167
Block Wall	Sq. Ft.	0	85	0	0	85	170
Retaining Wall	Lin. Ft.	0	0	0	10	0	20
Fencing (Protect)	Lin. Ft.	0	0	0	0	100	100
Slope Paving	Sq. Yds.	0	0	0	191	0	327
Utility (P.L.C.)	Lump Sum	0	0	0	0	0	518
Sand Fill	Cu. Yds.	0	0	0	21	0	37



PROFILE ALONG HOLDEN AVE. AT NORTH CURB LINE
Scale: Horiz. 1"=20', Vert. 1"=4'

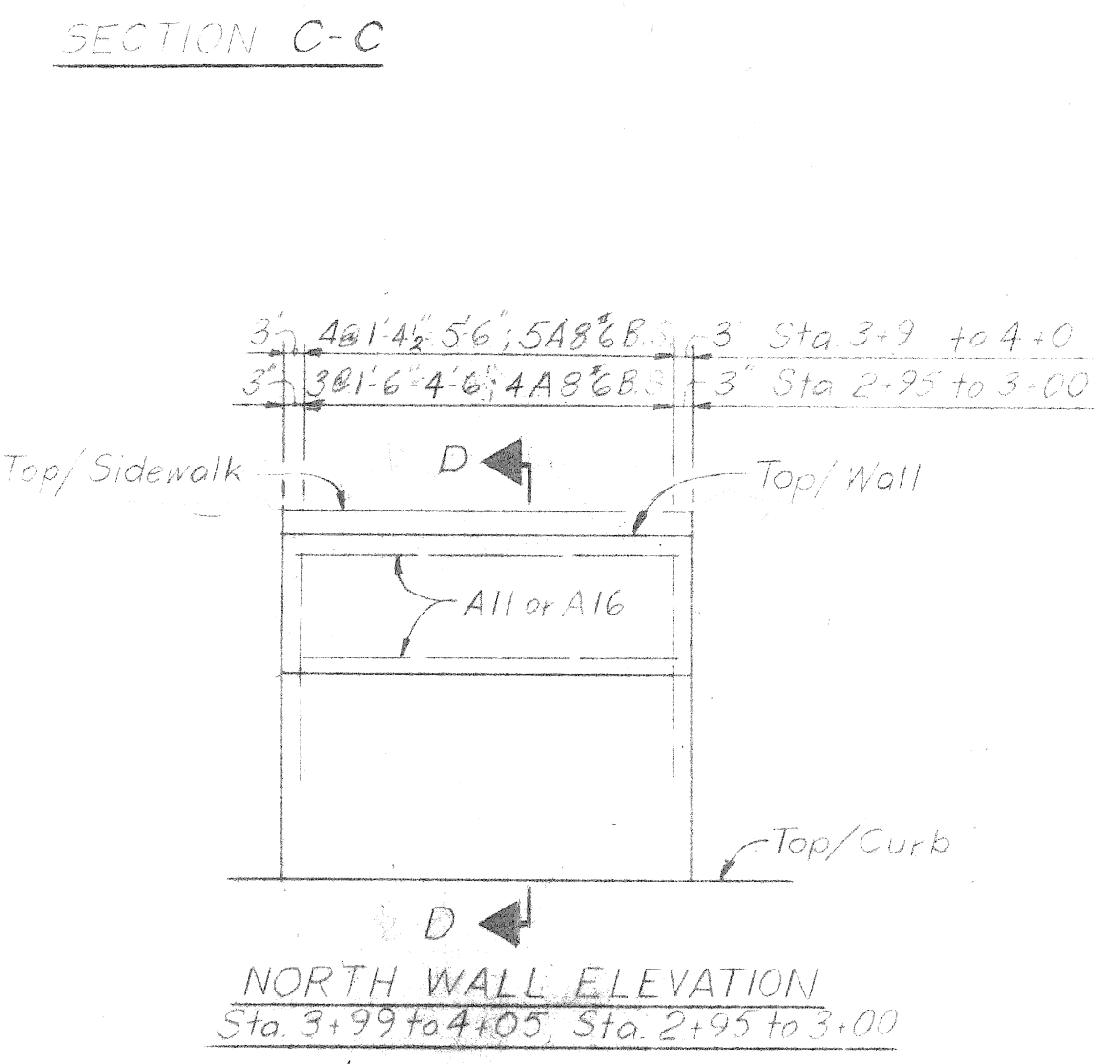
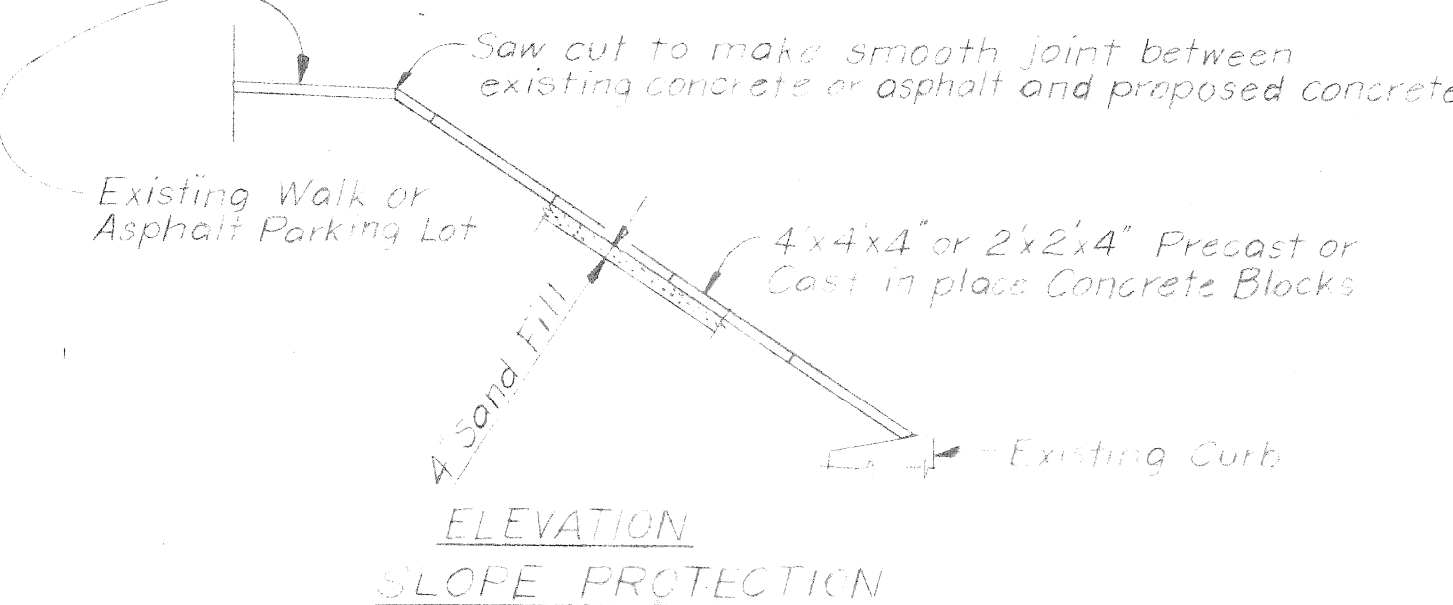
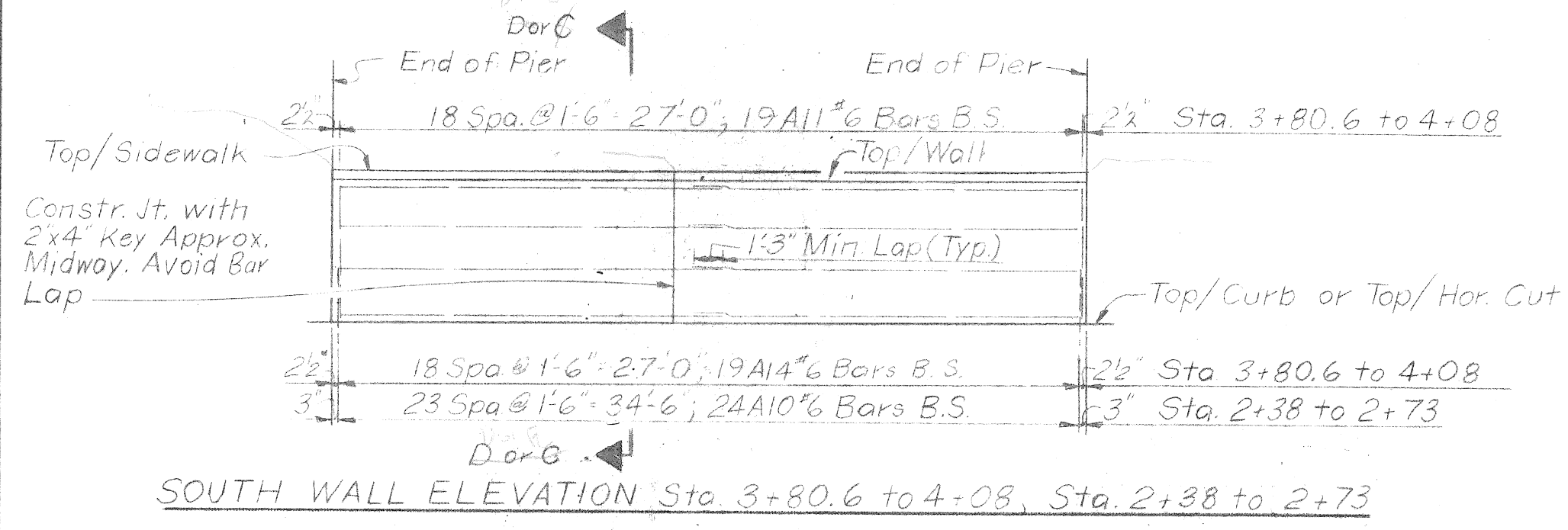
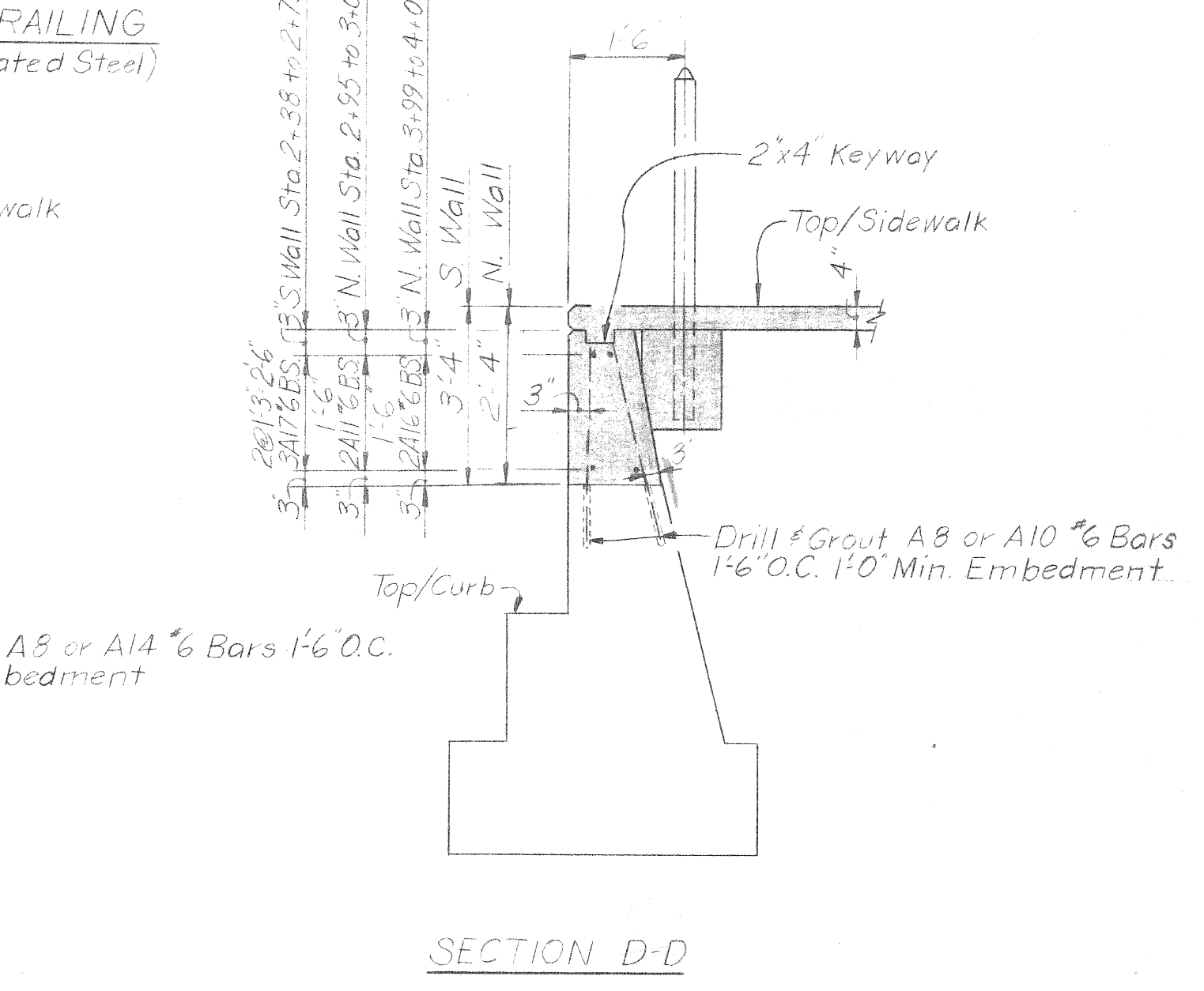
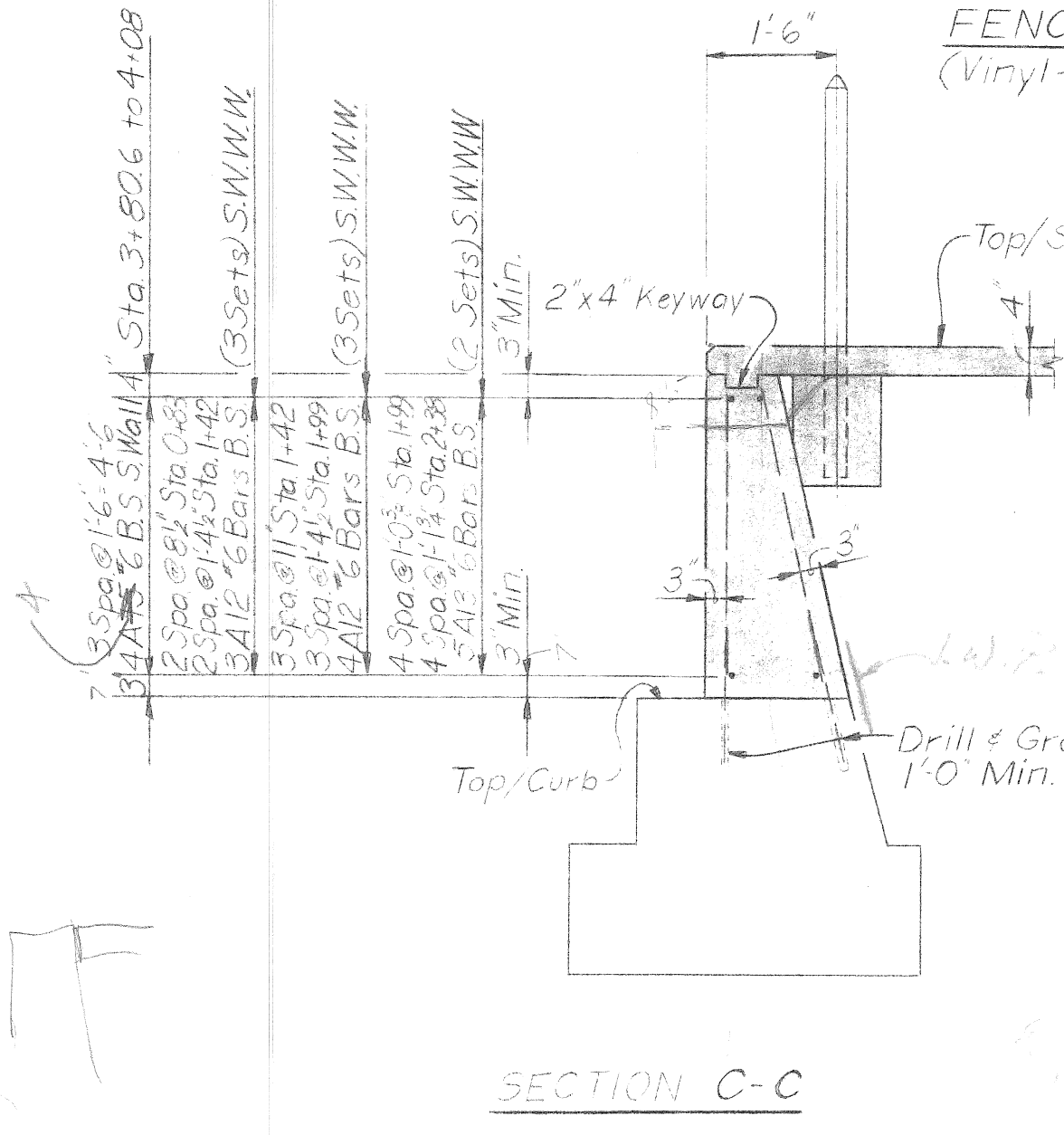
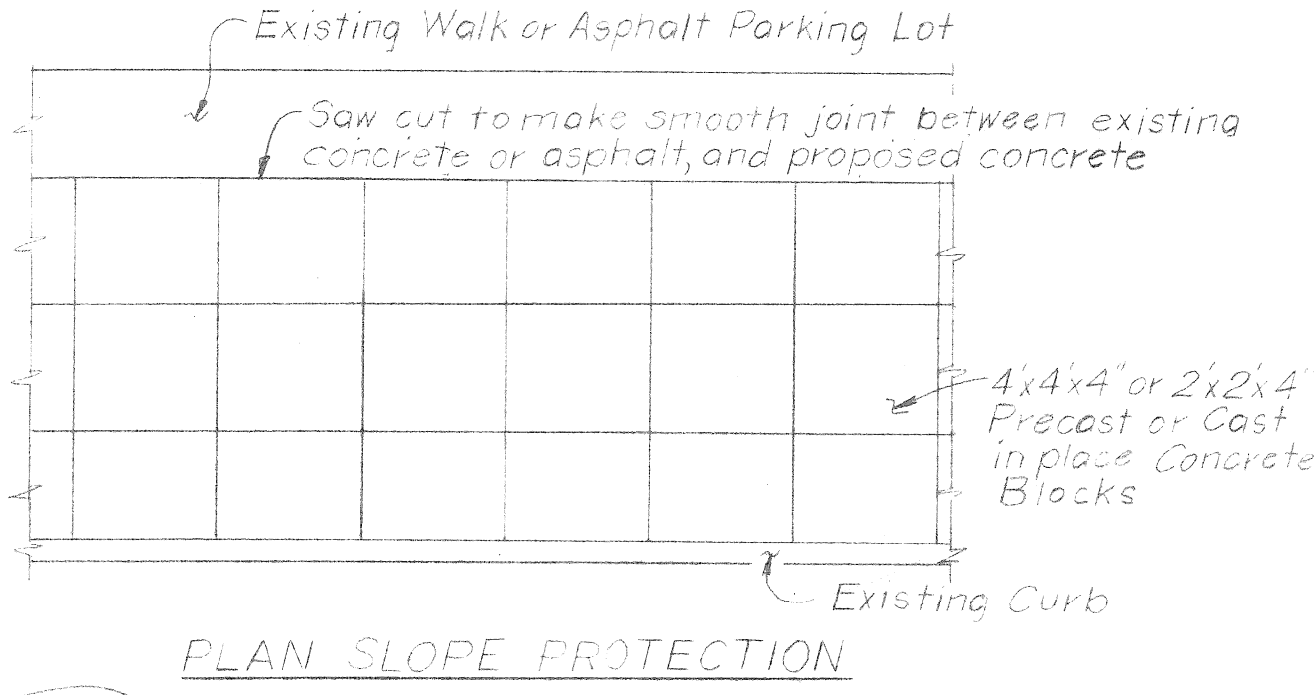
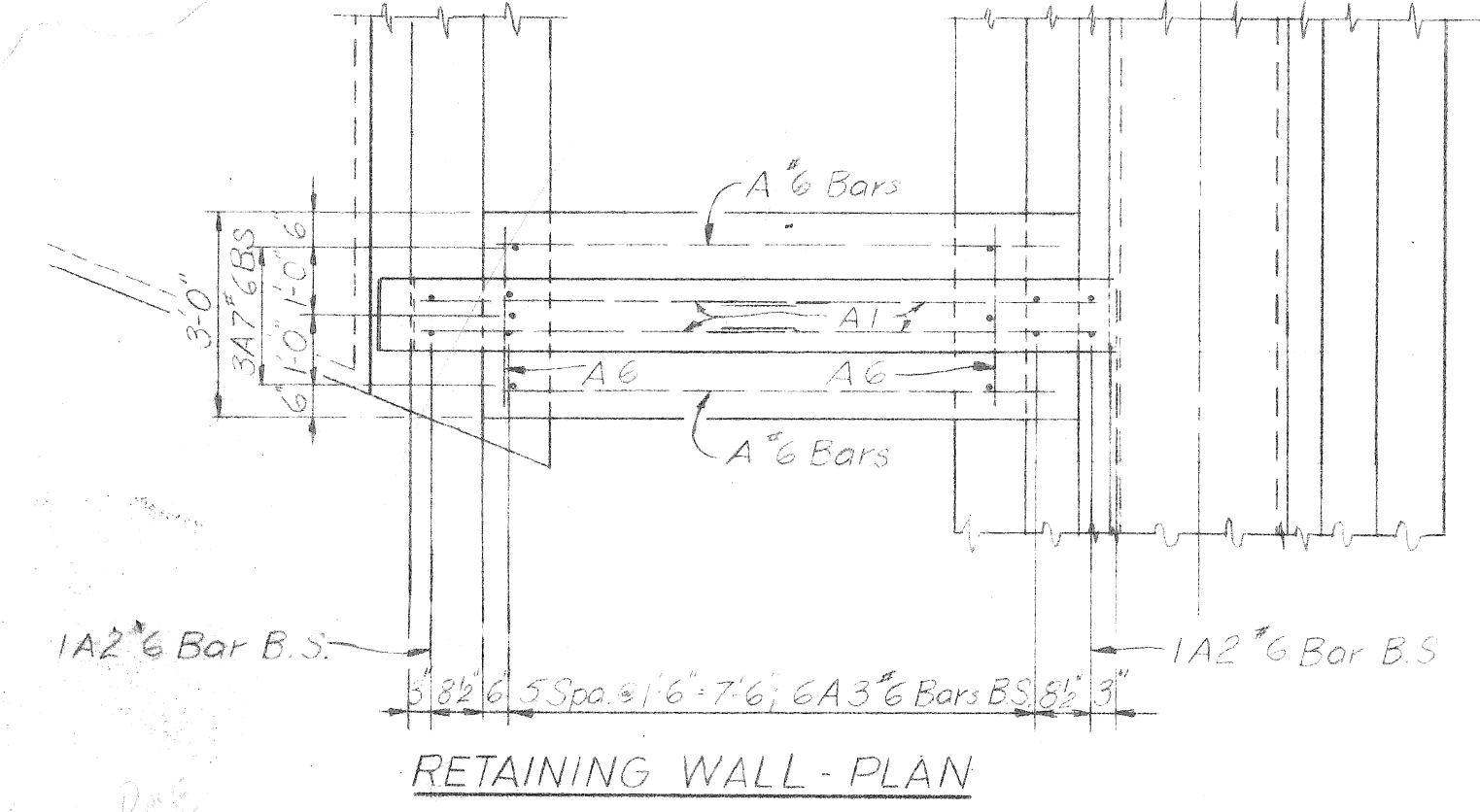
DESIGNED BY W. A. Z.	APPROVED:	CITY OF DETROIT DEPARTMENT OF PUBLIC WORKS CITY ENGINEERS OFFICE	HOLDEN AVE. UNDER BRIDGE XU-6 PENN CENTRAL & GRAND TRUNK WESTERN R.P.	SHEET 3 OF 4 SHEETS
DRAWN BY L. G.				CONTRACT No.
TRACED BY		WALL, SIDEWALK & RAILING REPAIR	REPAIR PLAN	DRWG No.
CHECKED BY KRB				DATE 11-22



NOTES:
 Fittings & fastenings shall be malleable wrought iron or pressed steel and galvanized. Wire used in fastening the fabric shall be not less than #3 gauge. The bands of wire shall be not less than 12\"/>

All fencing materials shall be coated with a plasticized polyvinyl chloride, except that portions of the posts to be imbedded in concrete.

The fencing material shall be either:
 (a) Anchor Vinyl Coated Steel Chain Link Fence with a color coating black, supplied by the Anchor Fence Division, Anchor Post Products, Inc.
 (b) Color Bend with a color coating black, supplied by the Color Guard Corp. Raritan, N.J.
 (c) or approved equal to the above.



STEEL REINFORCEMENT DETAILS				
No.	length	size	quan	weight
A1	5'-6"	#4	16	59
2	6'-6"	#6	4	39
3	7'-9"	#6	12	140
4	8'-0"	#6	4	48
5	7'-6"	#6	4	45
6	2'-6"	#6	30	113
7	2'-0"	#6	22	66
8	3'-3"	#6	40	195
9	3'-0"	#6	34	153
10	4'-0"	#6	80	481
11	4'-6"	#6	84	568
12	20'-0"	#6	52	1562
13	2'-0"	#6	10	315
14	3'-6"	#6	248	1304
15	14'-0"	#6	16	336
16	5'-6"	#6	4	33
17	18'-0"	#6	6	162
Total				5619

DESIGNED BY WAL	APPROVED:	CITY OF DETROIT DEPARTMENT OF PUBLIC WORKS CITY ENGINEERS OFFICE FOR WALL, SIDEWALK & RAILING REPAIR	HOLDEN AVE. UNDER BRIDGE XU-6 PENN CENTRAL & GRAND TRUNK WESTERN R.R.	SHEET 4 OF 4 SHEETS
DRAWN BY L.G.				CONTRACT NO.
TRACED BY				DRWG NO.
CHECKED BY RRB				DATE 11-72