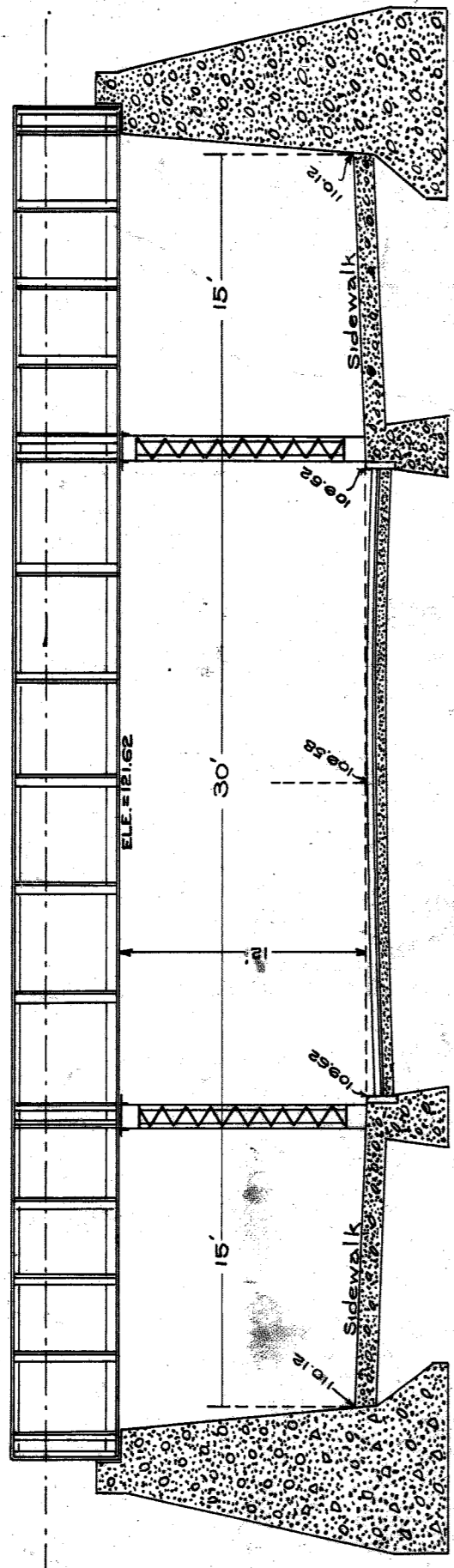
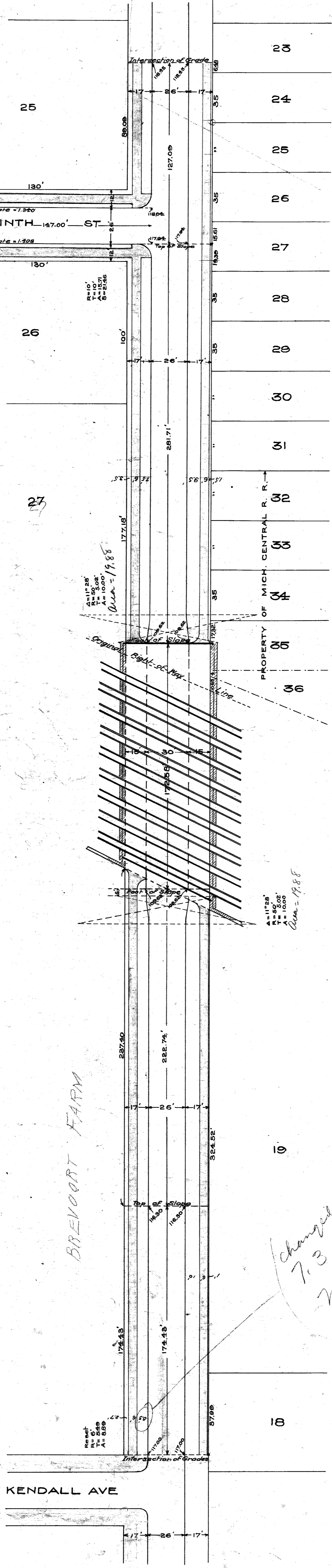


Approved: *[Signature]* City Engineer
[Signature] Chief Engineer, M.C.R.R.

PROPOSED SUBWAY IN
BEECHER STREET
 UNDER M. C. R. R.



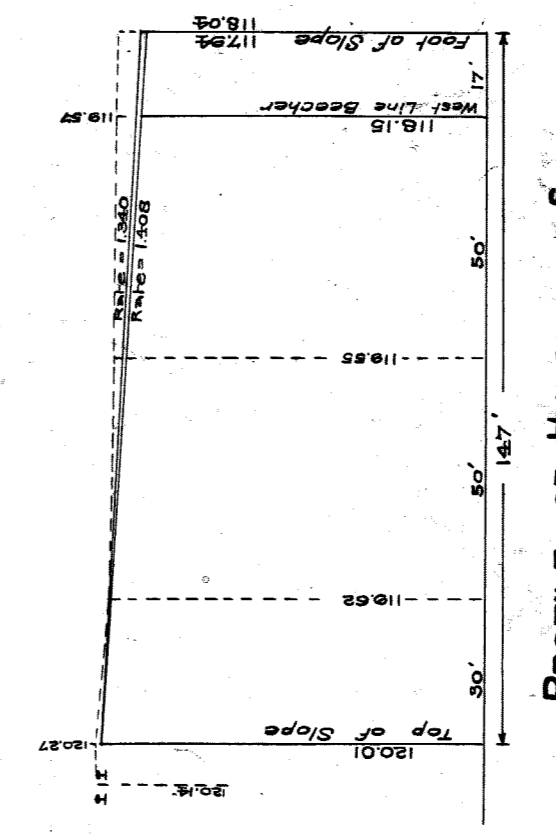
CROSS SECTION
 Scale, one inch = 8 Feet



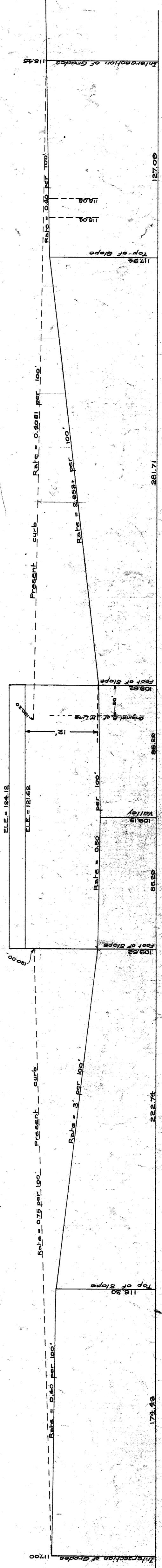
PLAN
 Scale, one inch = 40 Feet.

Changed to 7.3 - see letter to Mr. R.R. - this change made by me. Bridge Co. estimate to office 11/22/22

*28171
 28172
 28171*



PROFILE OF HYACINTH ST.



LONGITUDINAL SECTION.

Hor. Scale, one inch = 40 feet
 Ver. " " = 10 "

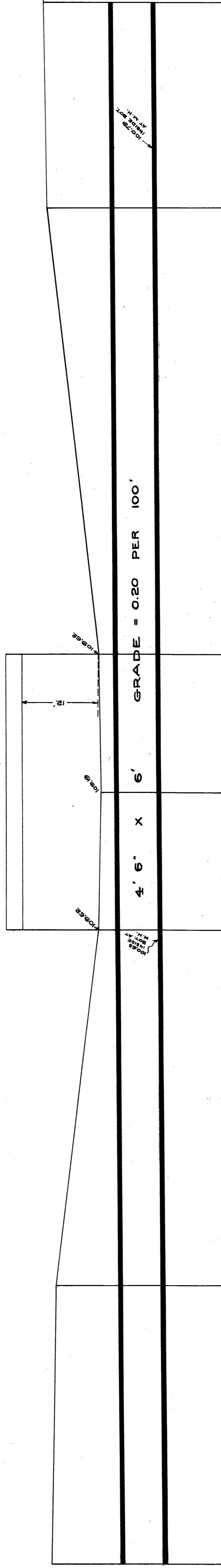
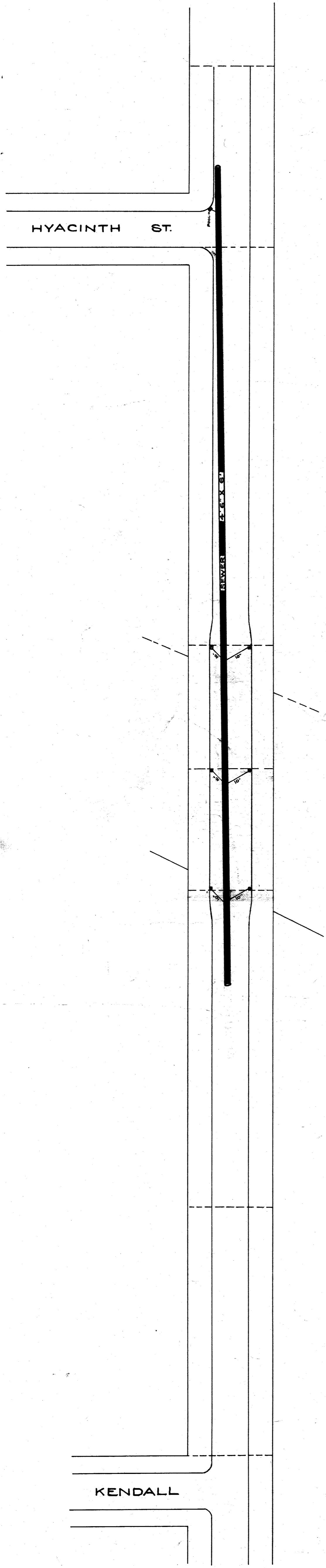
BEECHER ST.

CITY ENGINEER'S OFFICE
 GRADY SEYMOUR & BRIGGS
 515 Broadway, New York
 A. Seymour, Chief Engineer
 H. Briggs, Chief Engineer

City Engineer's Office -

File X 5521 A 2 I A

DRAINAGE PLAN
BEECHER AVE. SUBWAY

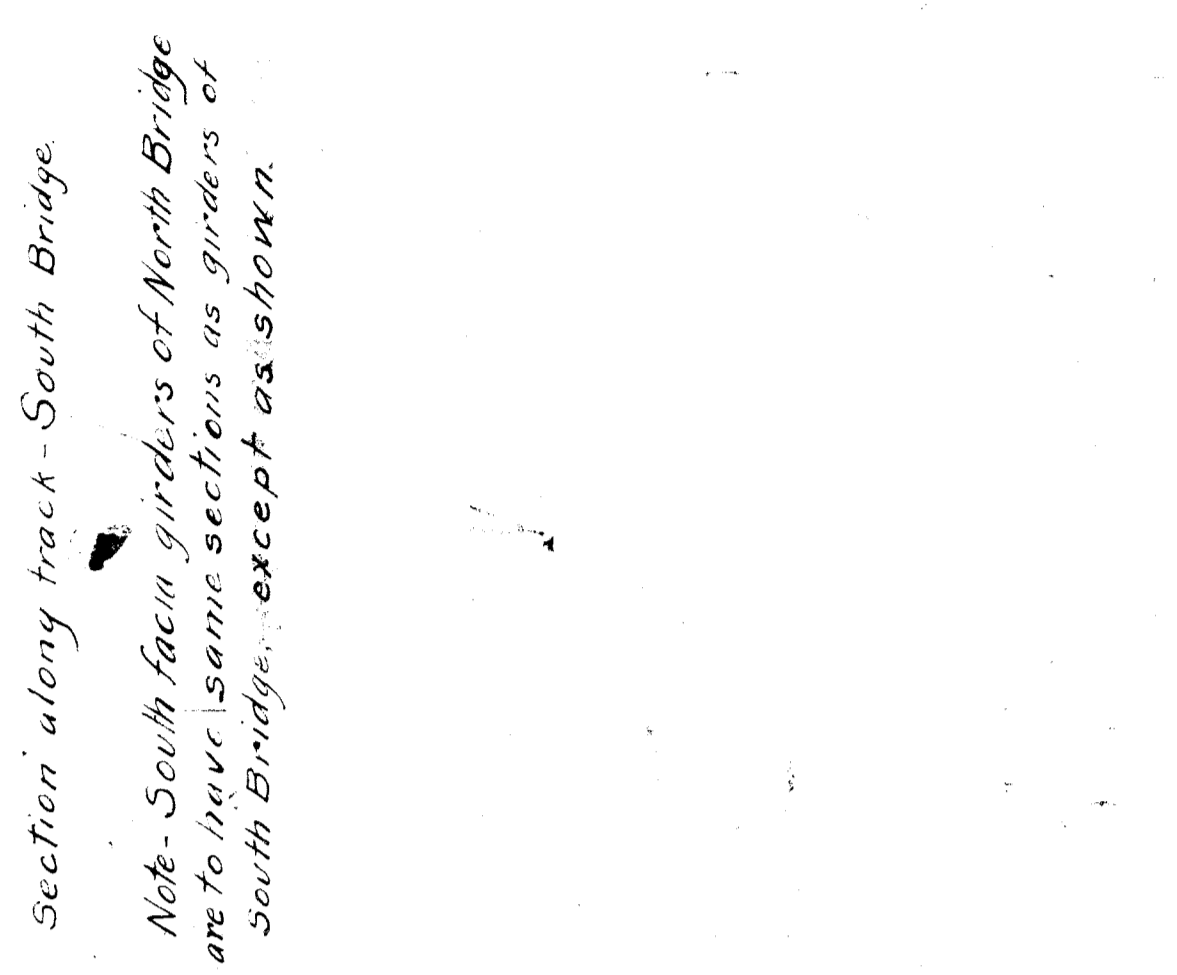
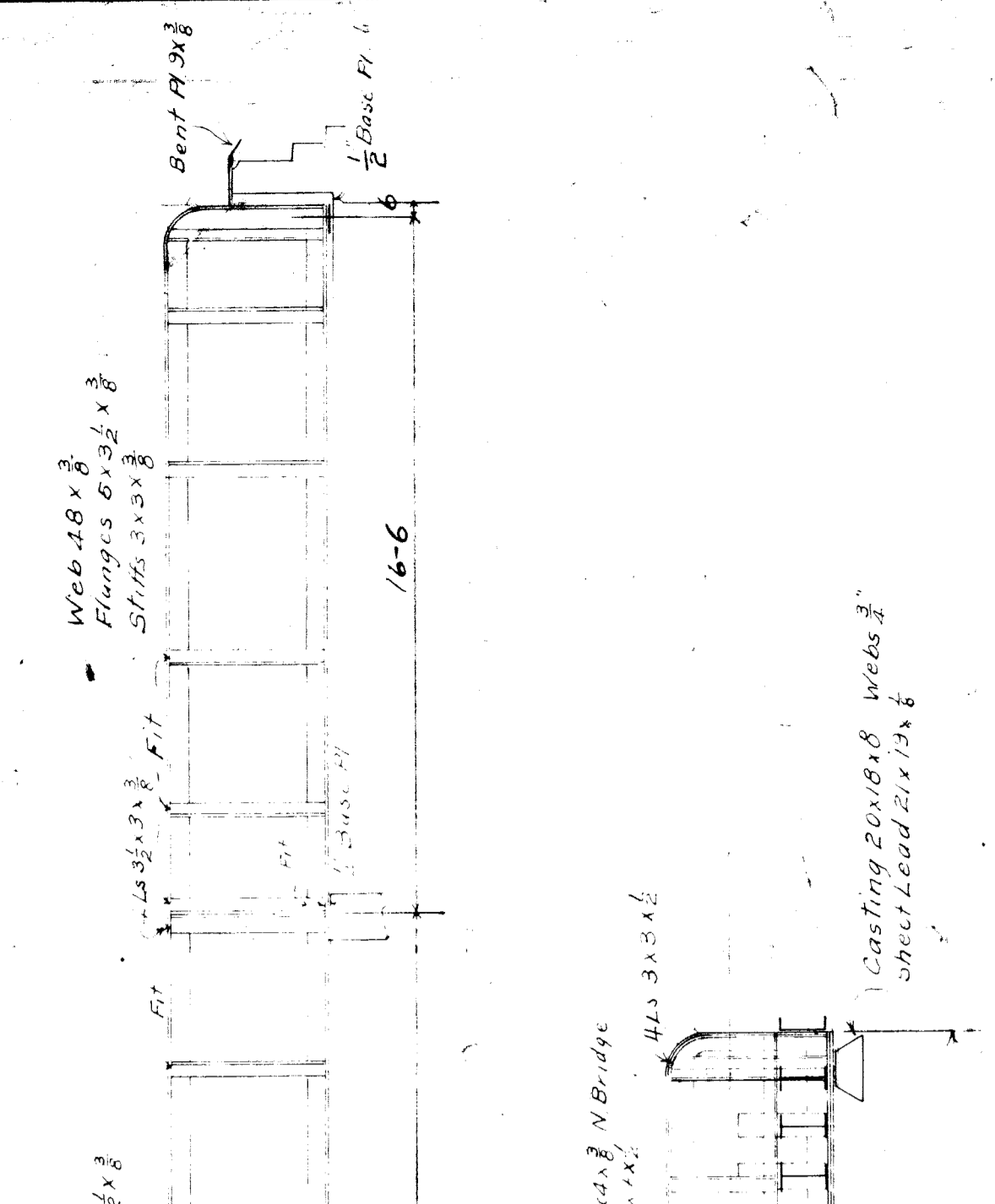
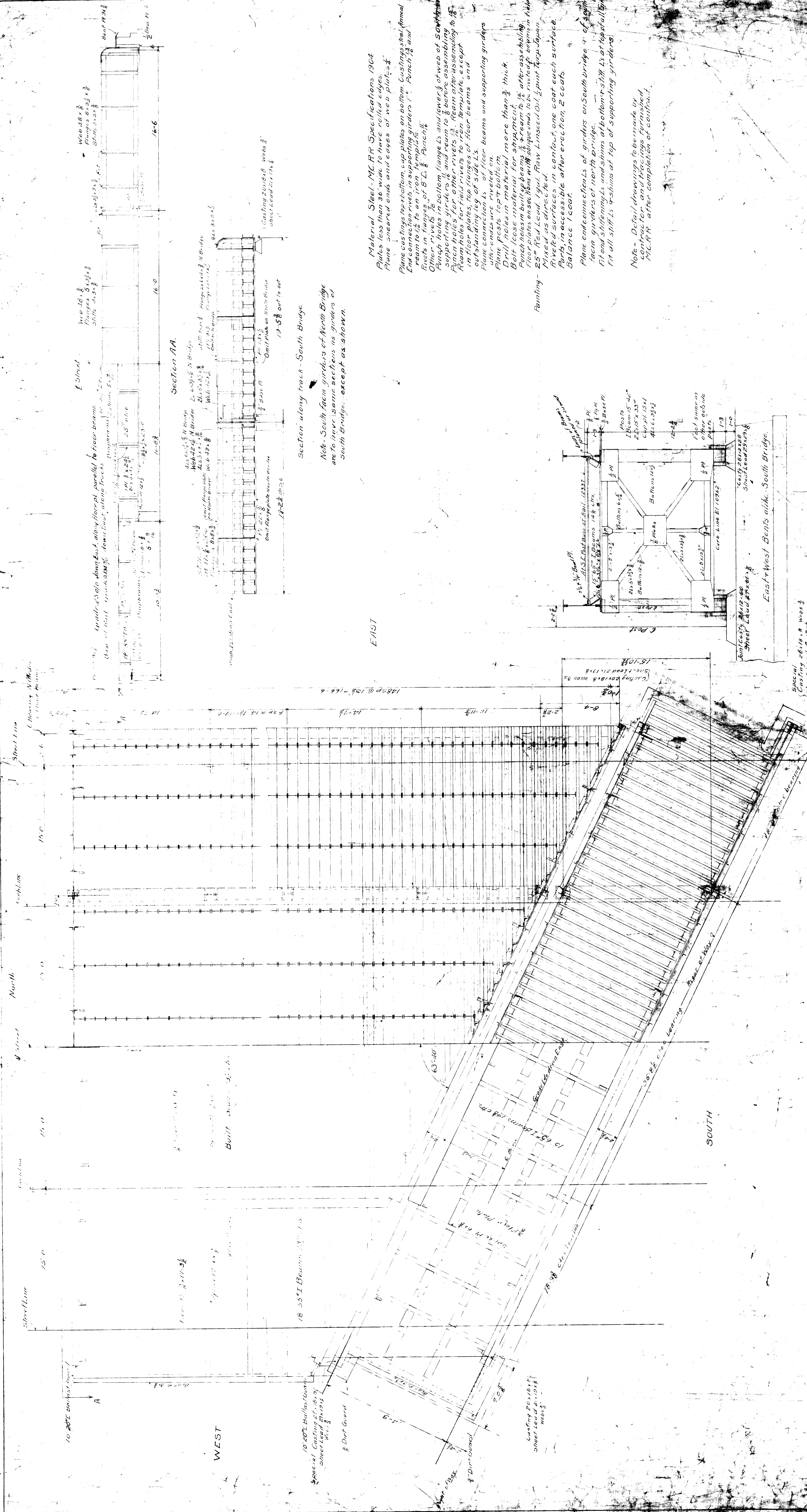


CITY ENGINEER'S OFFICE
GRADE ESTIMATION & BRIDGES
Sheet A
Drawer 2
No. J-40

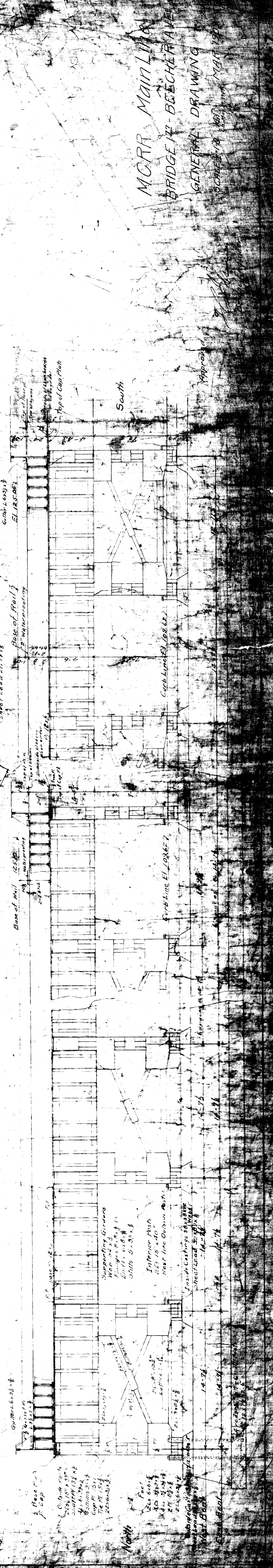
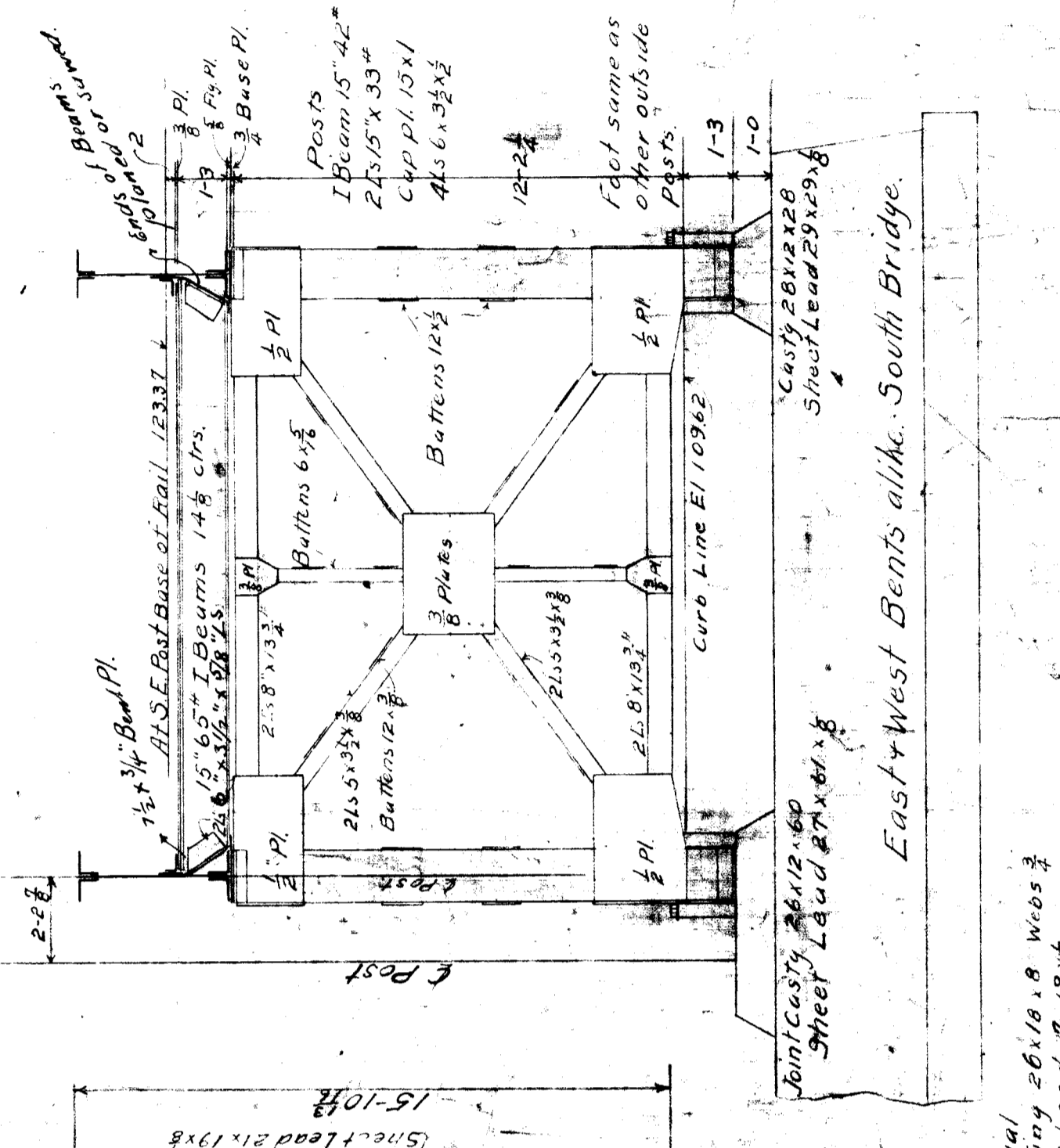
Drawn by J.W. Reid Aug 25, 1908

BEECHER AVE.
City Engineer's Office

File XUS2-2
A-2-I-46



Painting -
 Note: Detail drawings to be made by
 M.C.R.R. after completion of contract.



M.C.R.R. MAIN LINE
 BRIDGE 77 - BEECHER AV.
 GENERAL DRAWING
 BOWEN & MERRILL

