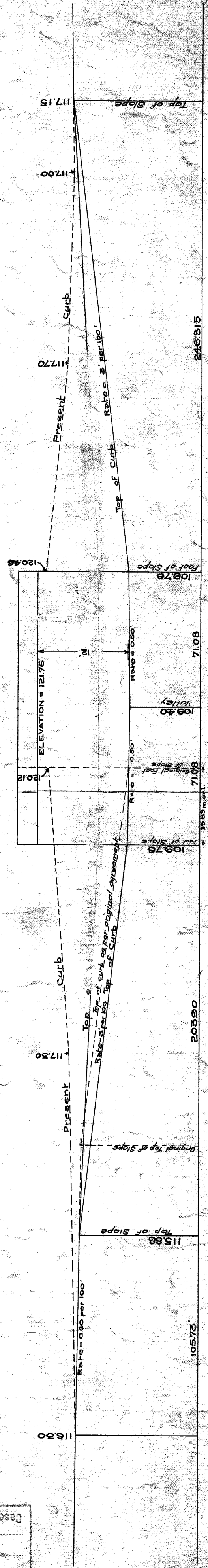
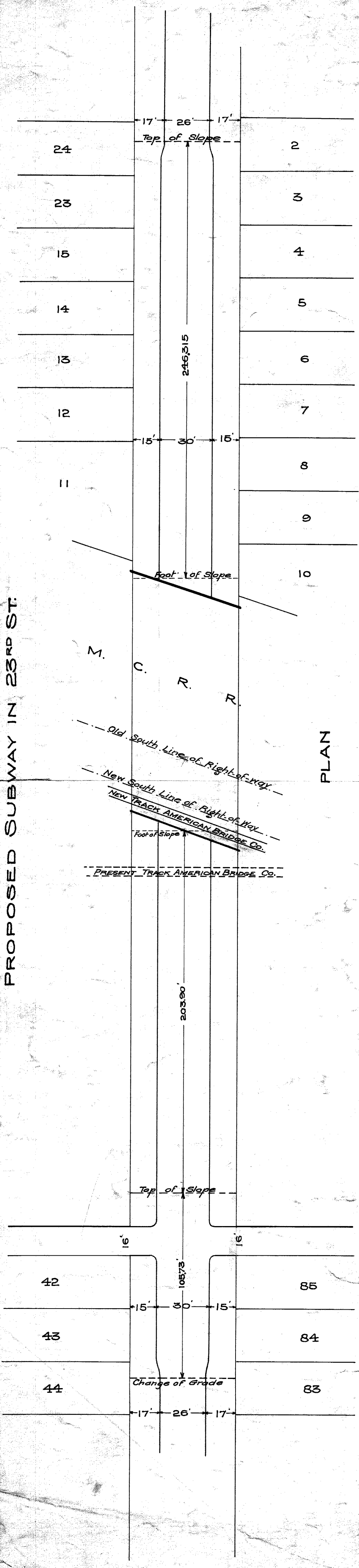


PROPOSED SUBWAY IN 23RD ST.



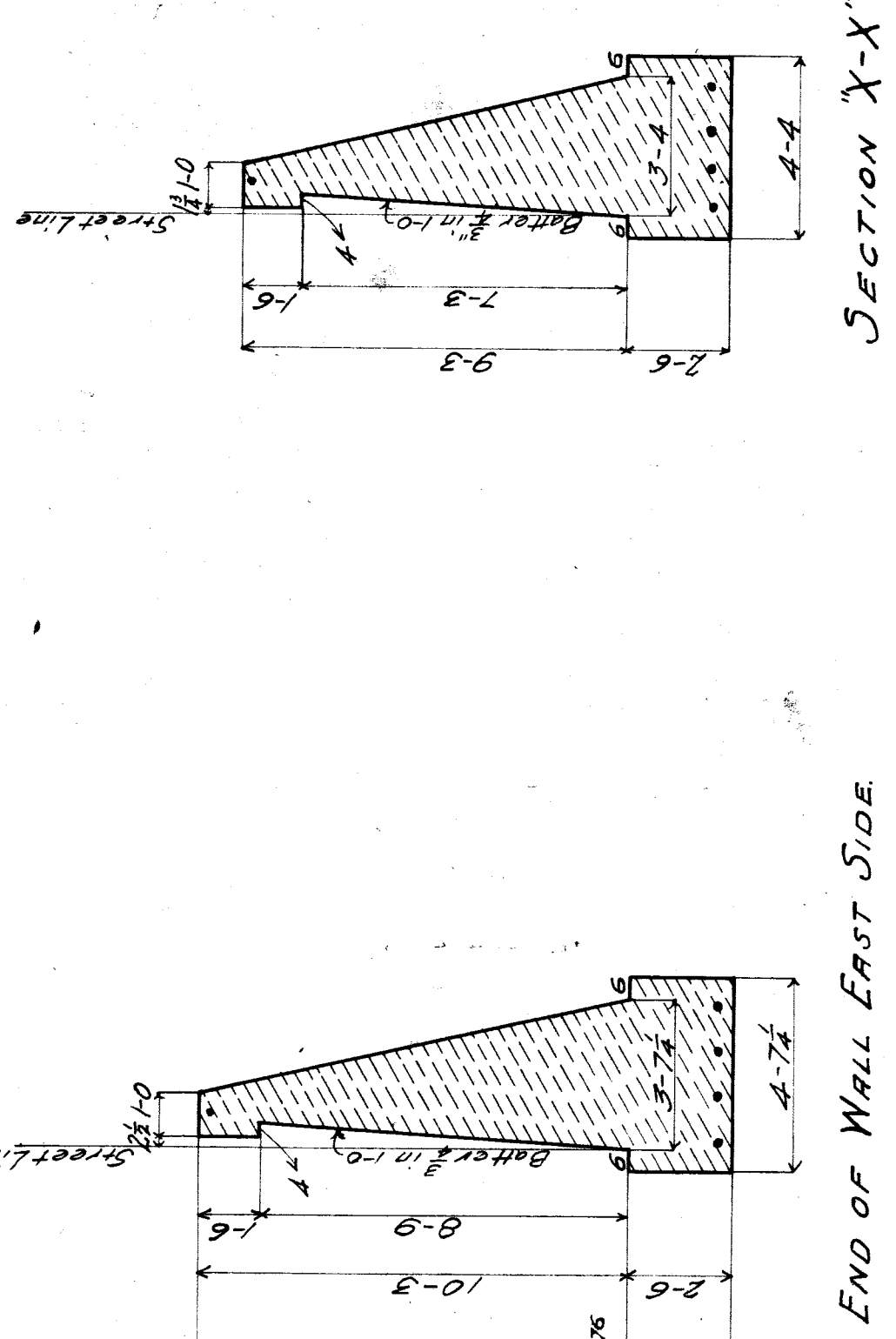
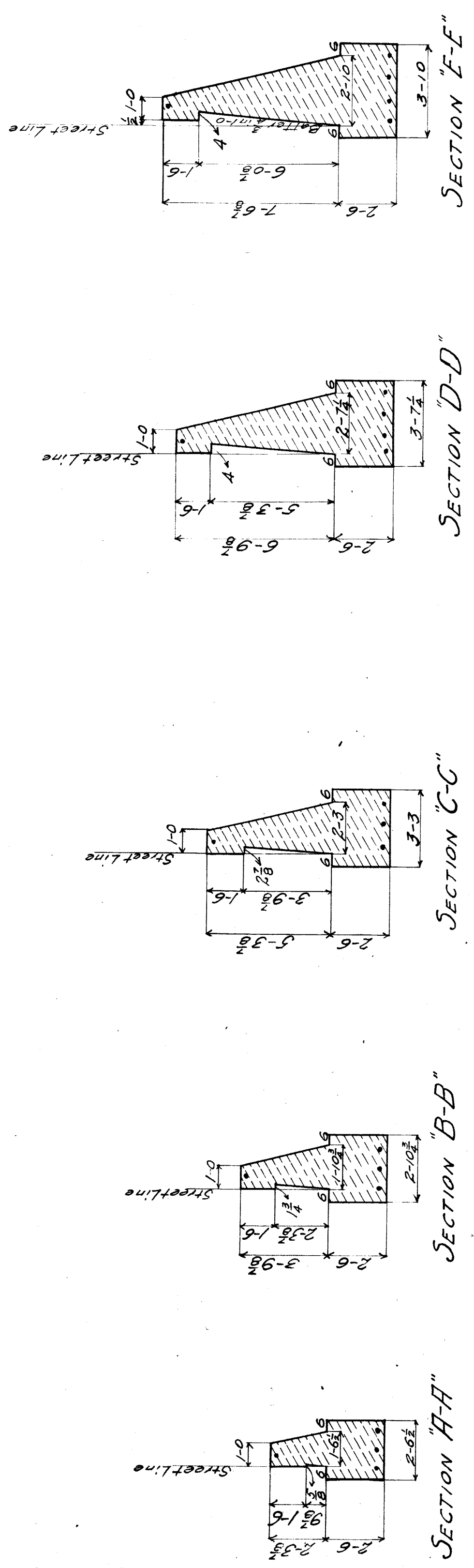
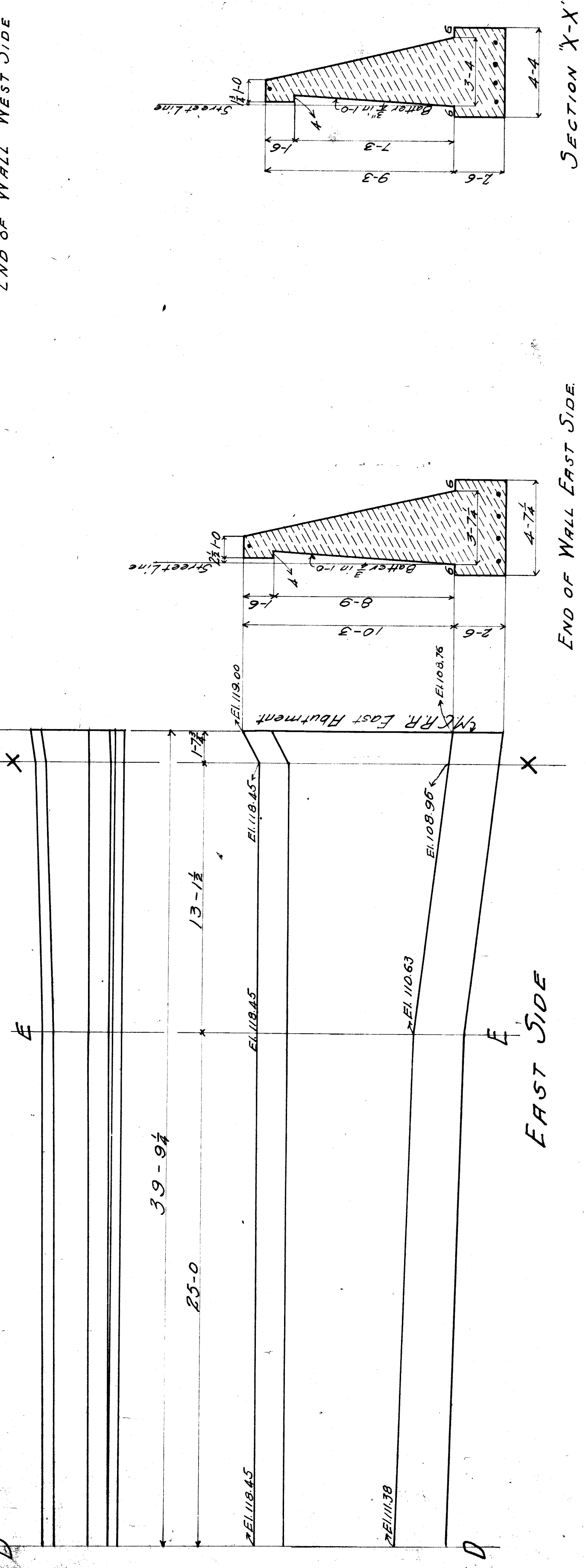
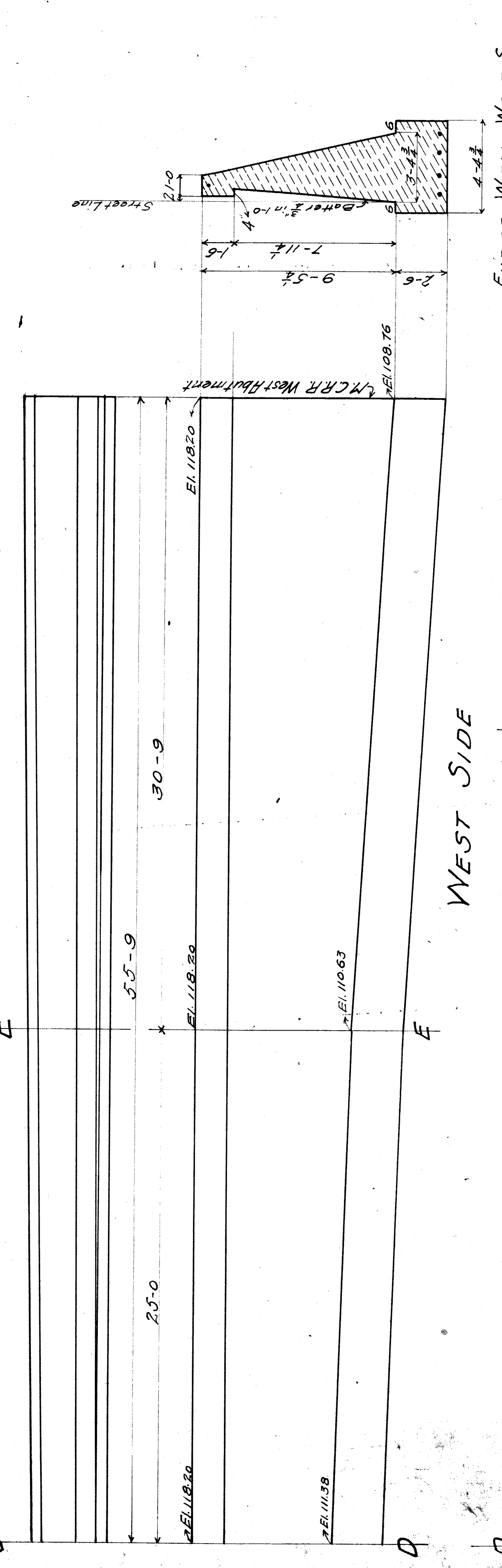
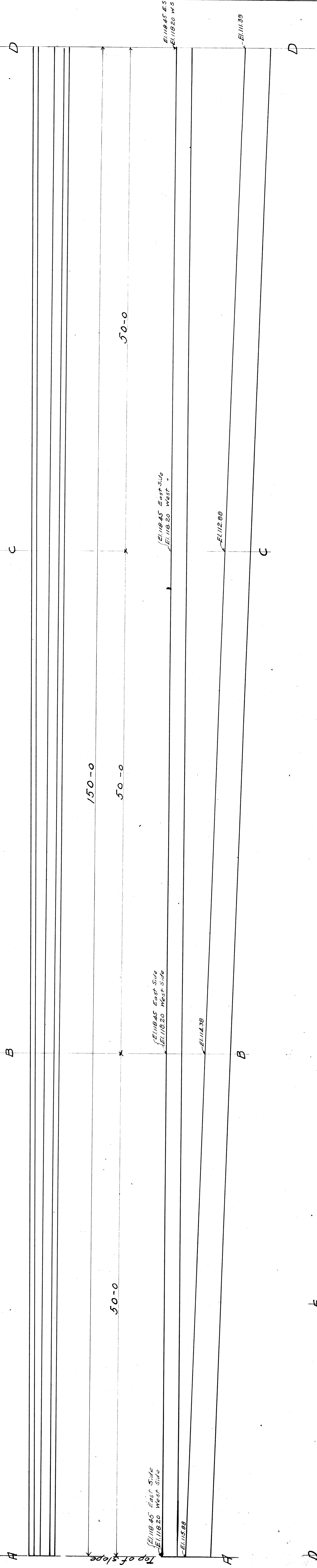
CITY ENGINEER'S OFFICE
 GRADE SEPARATION & BRIDGES
 Case A
 DRAWER 2
 155-A

City Engineer's Office
 Nov. 26, 1907, U.M.R.

PROFILE

File XU51-1

I-6-a



Make Concrete, 1 part cement, 2 parts sand, 3 parts broken stone

NOTE Retaining walls same on both sides of Street except as shown different

East Wall Contents 119 cu. yds.

West Wall Contents 135 cu yds

Approved,

Bridge Engineer

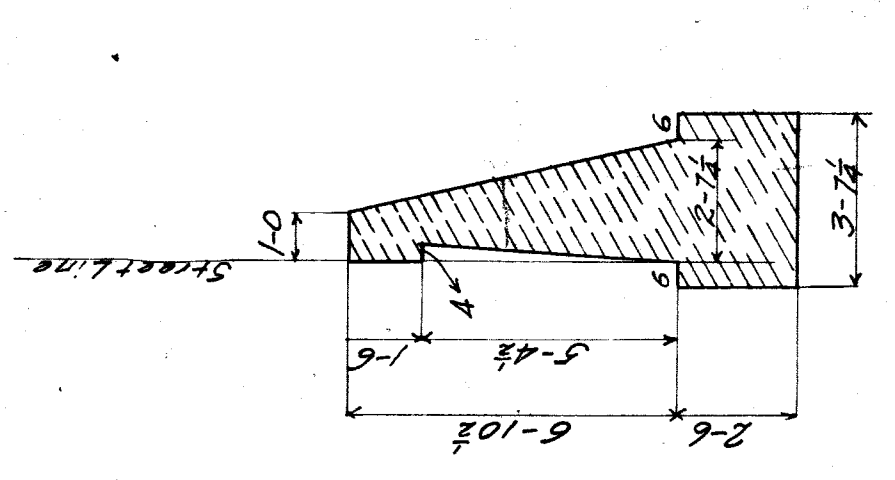
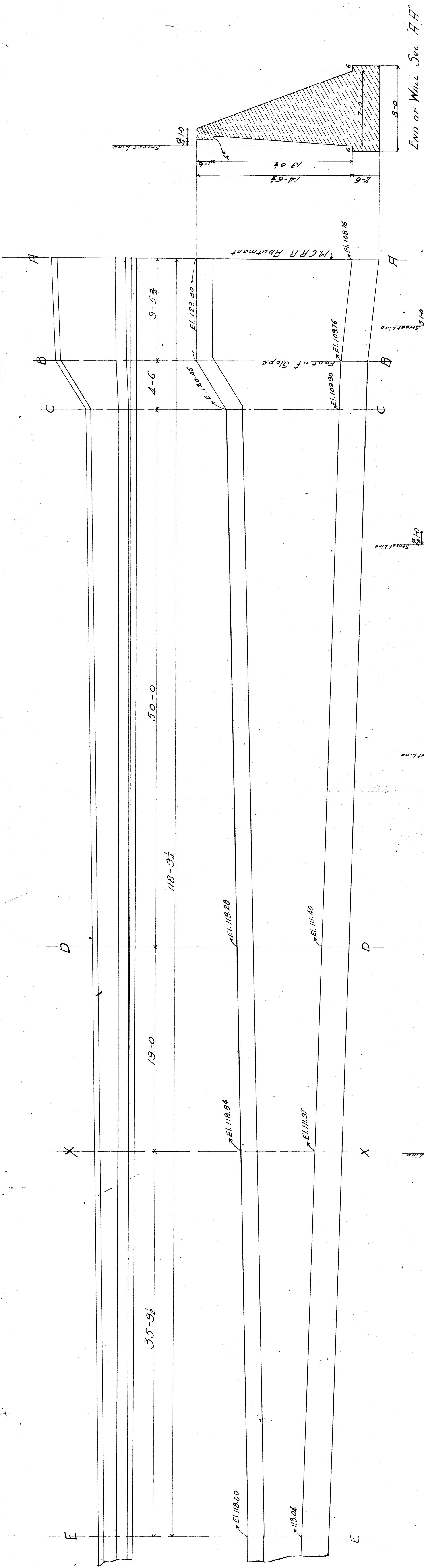
M. C. R. R. MAIN LINE

BR 120 TWENTY-THIRD ST.

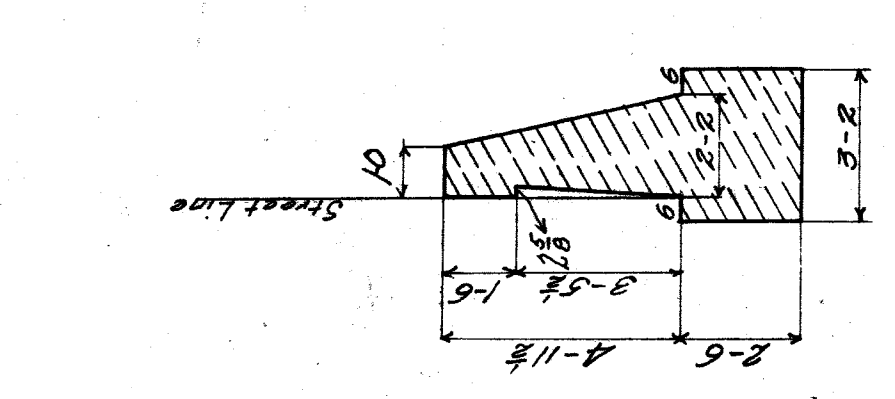
RETAINING WALLS SOUTH OF R.O.F.W.

SCALE 1/2" = 1'-0" JUNE 1908

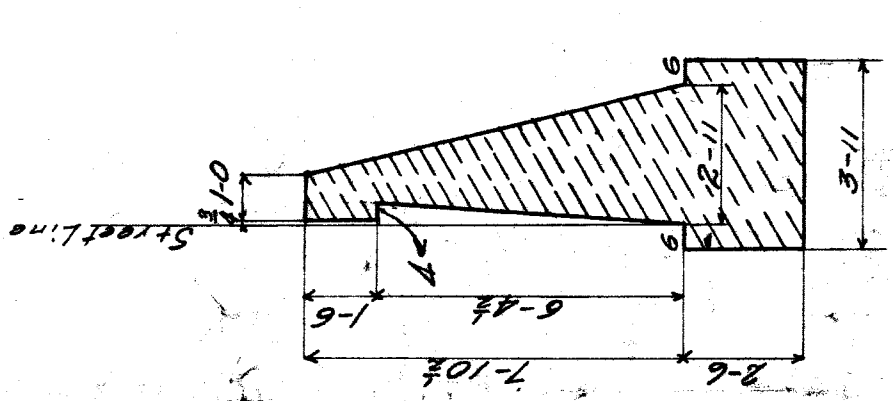
1908
File XU51-2 190 T



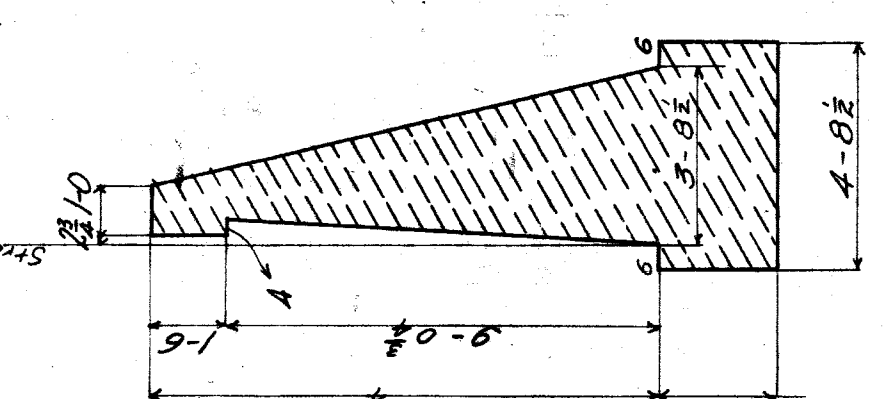
SECTION X-X"



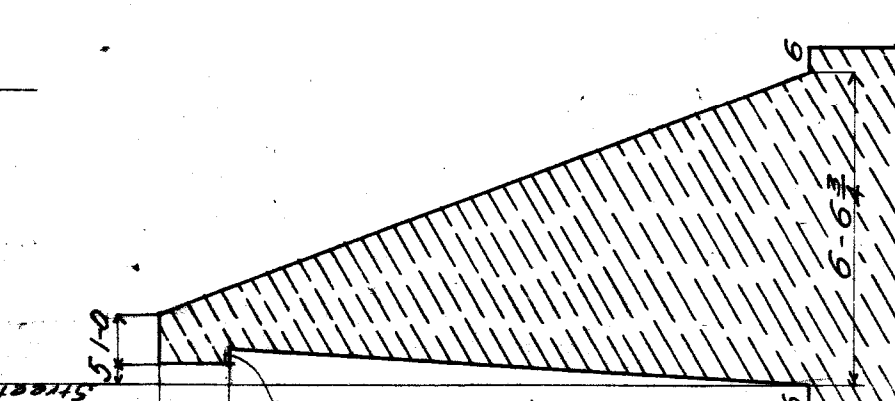
SECTION E-E"



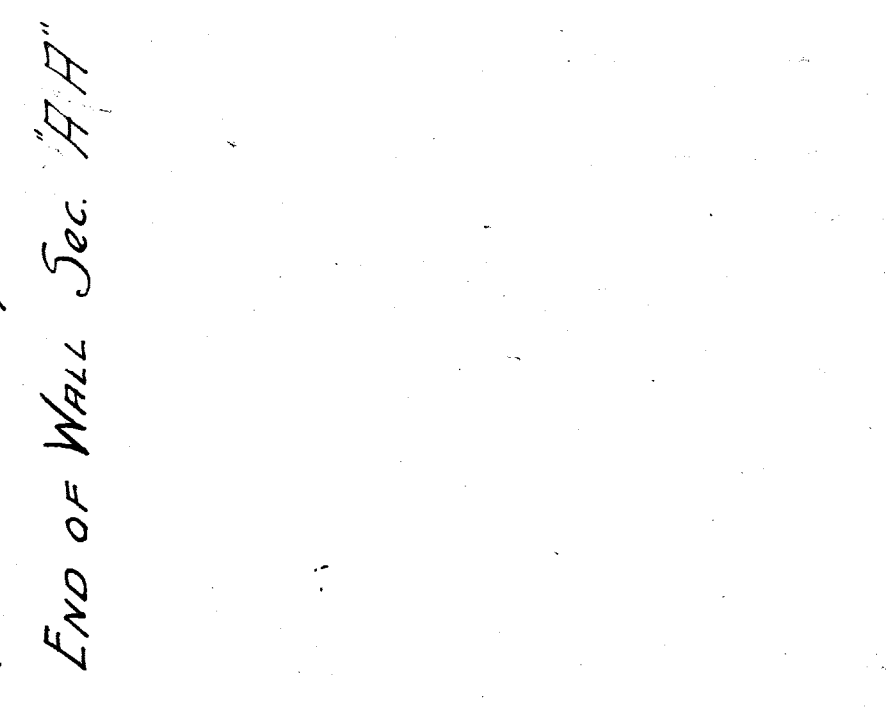
SECTION D-D"



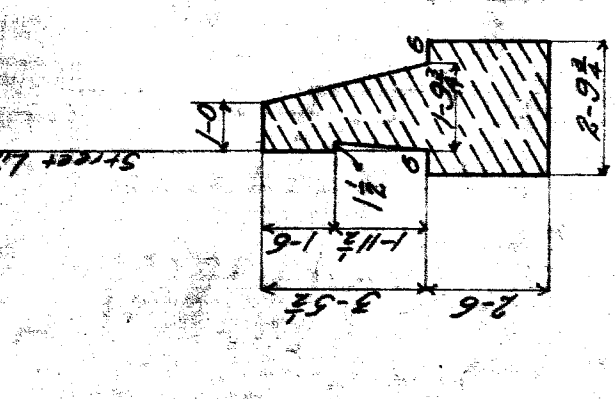
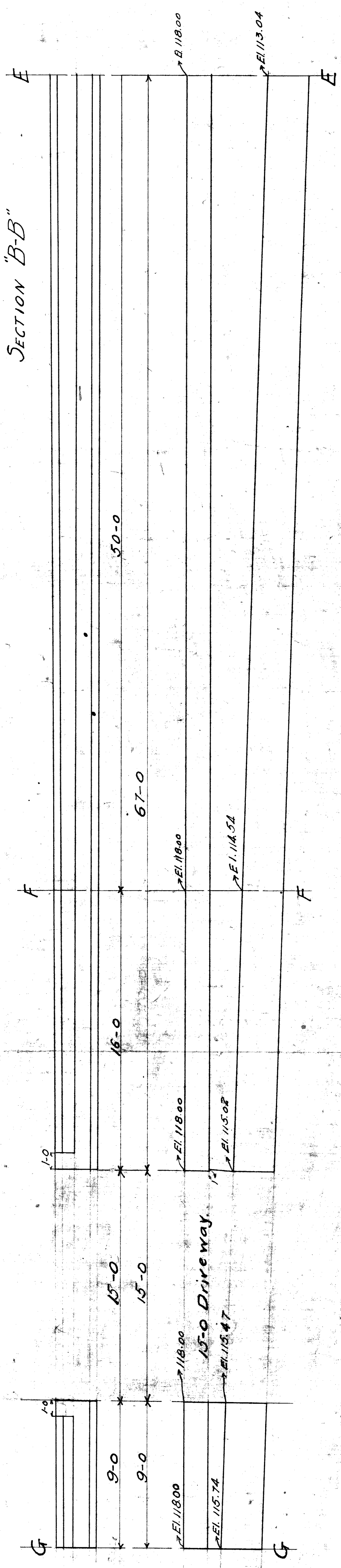
SECTION C-C"



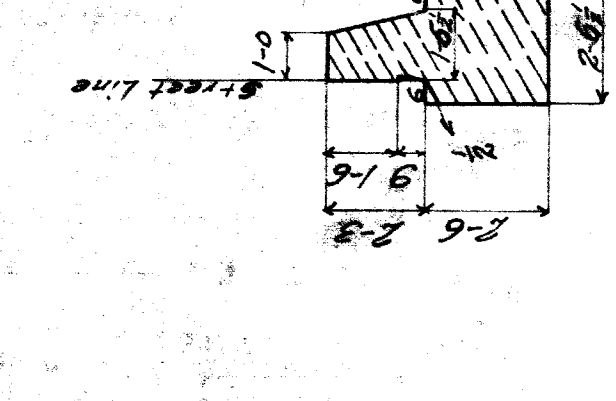
SECTION B-B"



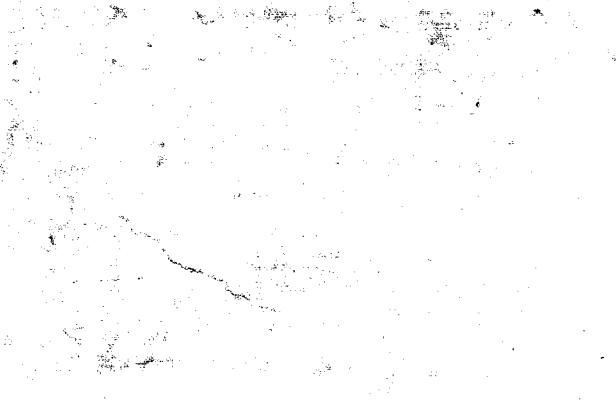
SECTION A-A"



SECTION H-H"



SECTION I-I"



SECTION J-J"



SECTION K-K"



SECTION L-L"



SECTION M-M"



SECTION N-N"



SECTION O-O"



SECTION P-P"

SECTION Q-Q"

SECTION R-R"

SECTION S-S"

SECTION T-T"

SECTION U-U"

SECTION V-V"

SECTION W-W"

SECTION X-X"

SECTION Y-Y"

SECTION Z-Z"

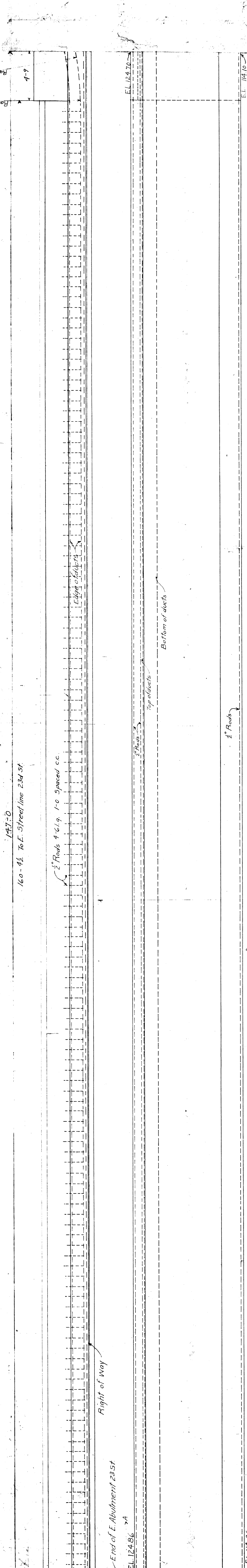
Make concrete 1 part cement: 2 1/2 parts sand: 4 1/2 parts broken stone.
Face exposed surfaces with 1 1/2" Mortar.
Contents 166 cu. yds.

M.C.R.R. MAIN LINE
BR. 190 TWENTY-THIRD ST.
RETAINING WALL NORTH OF FOF W. EAST SIDE
Scale 1/4" = 1'-0" & MAY 1908

Approved:
Bridge Engineer

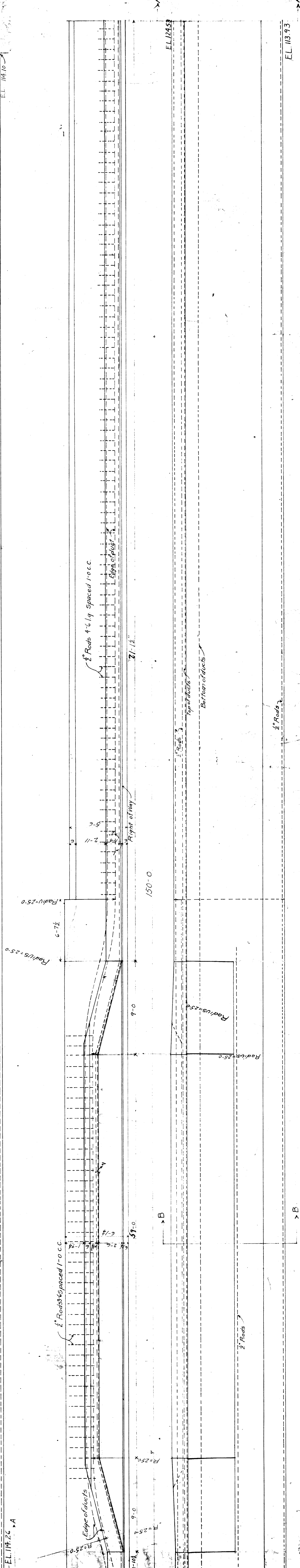
File XUSI-9/190 F

160-43 To E. Street line 234 St.



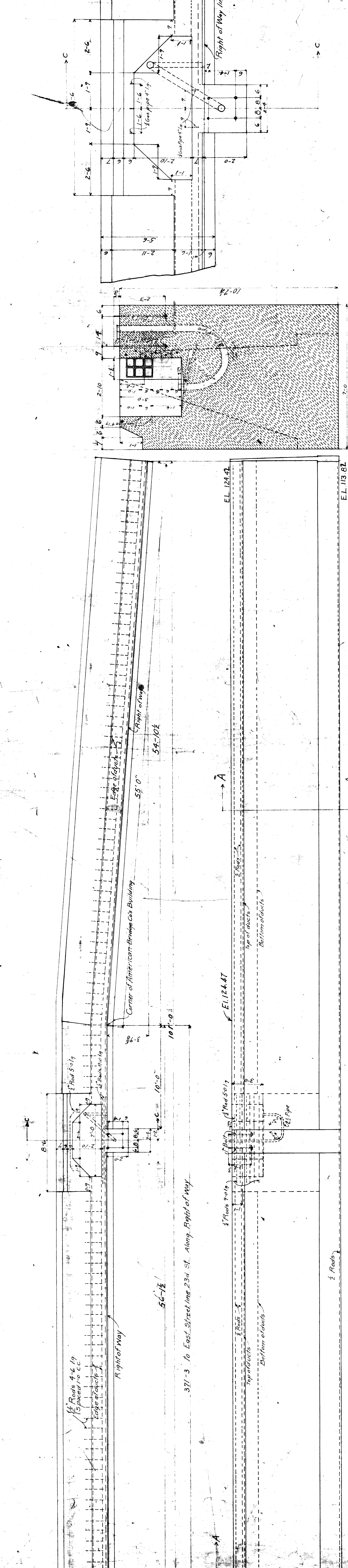
End of E. Abutment 234 St

CEL 114 24 - A



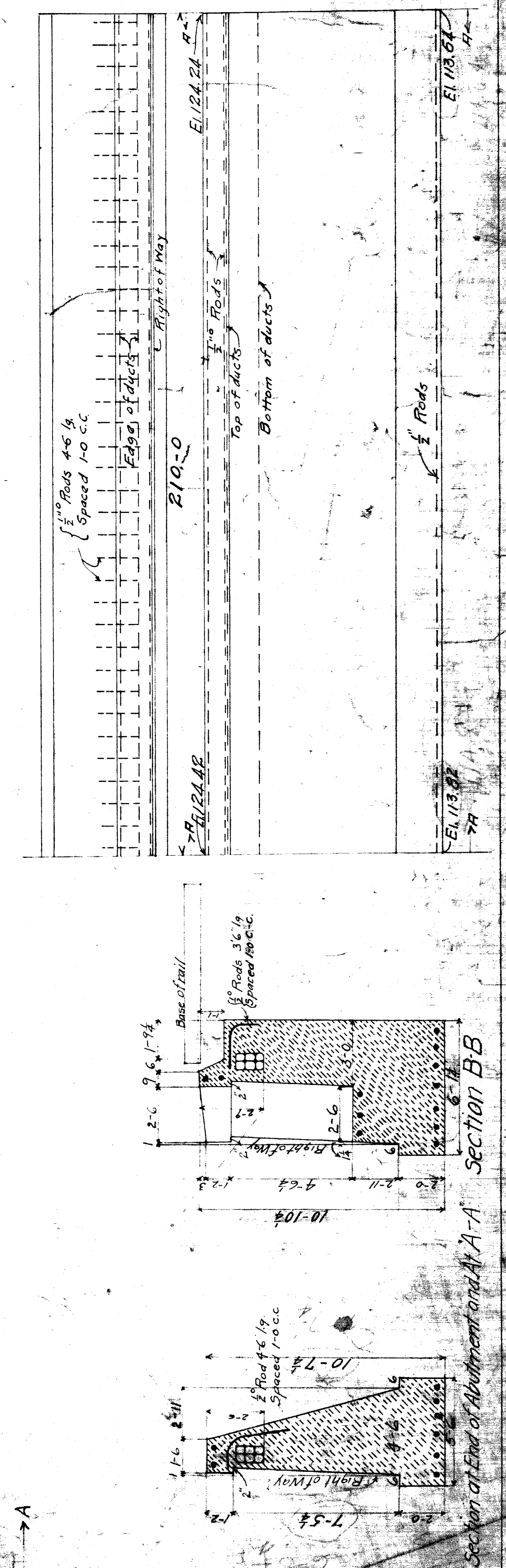
371-3 to East Street line 234 St. Along Right of Way

EL 113.93

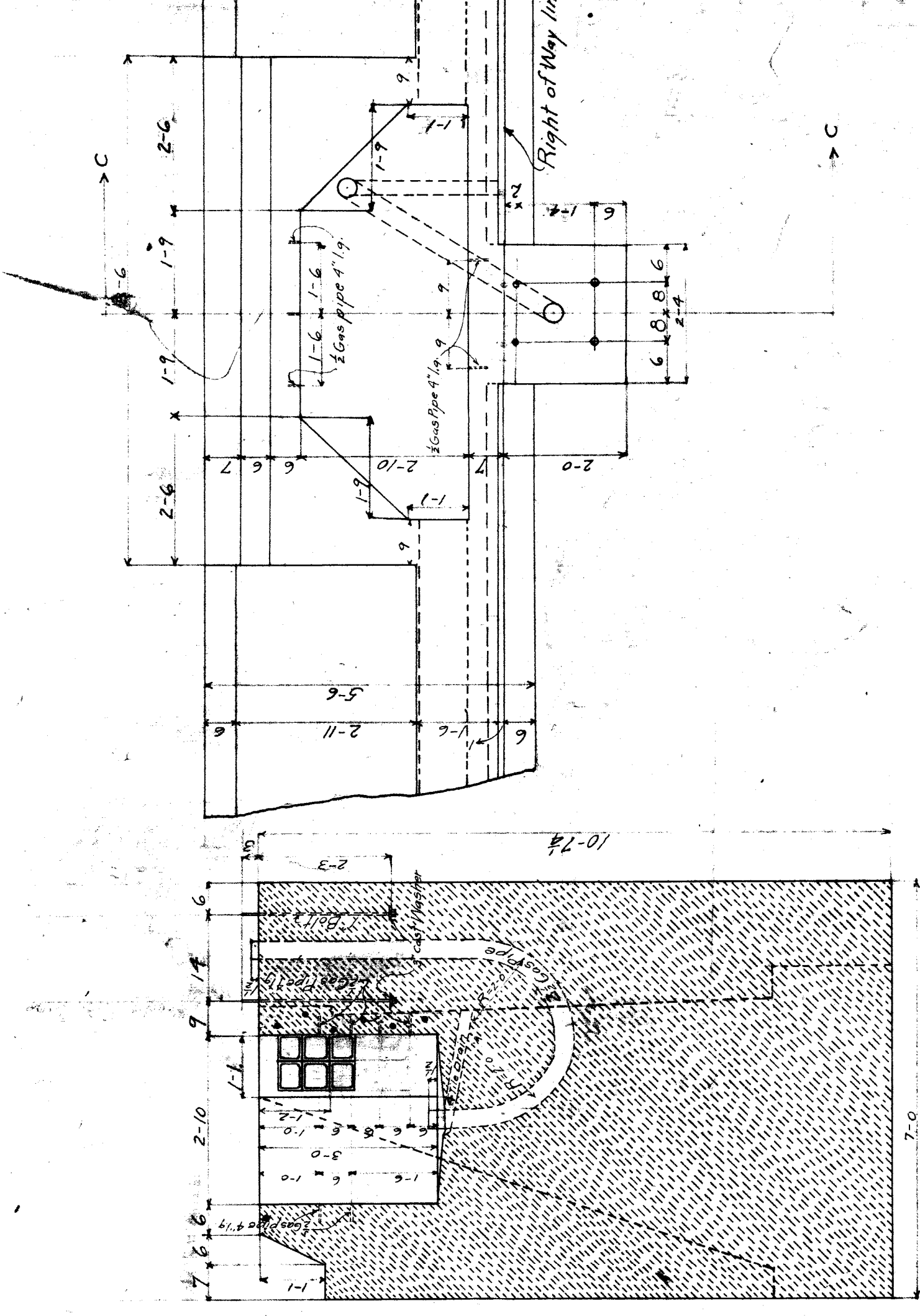


Center of American-Emphoras Building

EL 124.47



SECTION BB



SECTION C-C

Make concrete: 1 part of Portland cement, 2 1/2 parts of sand, and 4 1/2 parts of crushed stone
 All roads 3"
 Contents 56.6 CU Yds
 16.8 .. Detroit River Tunnel Co

1 3.8
 2 2.6
 7 Jan 1st 1909

Approved

M.C.R.R. MAIN LINE

RETAINING WALL E. 234 ST. SOUTH

SIDE OF RIGHT OF WAY

Scale 1" = 10'

JSK AUG 08

FILE XUSI-5 / 90 G



SPECIFICATIONS

- Make top of bridge seat and pier, Portland Cement 2 parts
- Make rest of pier, bridge and beam seats and of pier (part)
- Portland Cement, 2 parts sand, 3 parts broken stone, 1/2 parts broken stone
- Face all exposed surfaces with 1/2 mortar
- For detail of cover and frame see dry 3533

Contents
 M.C.R.R. Abutment = 496 cu yds. Piers = 650 cu yds.
 Am Br Co. " = 59 " " " = 21 " " " = 28 " " " = 72 "

M.C.R.R. Main Line
 Bridge No. Twenty Three
 East Abutment and Piers

Note: Joints in duct line to be staggered 1' and wrapped strip of burlap 6" wide and 24" long impregnated with neat-cast concrete.

For detail of cover and location of bolts see dry 3531

6 ducts to project beyond wall to bond with duct line

4 rods to project beyond wall to bond with duct line

Anchor bolts 2" x 7 1/2" steel

6 ducts to project beyond wall to bond with duct line

6" girder

6" ducts

6" ducts

6" ducts

6" ducts

6" ducts

6" ducts

6" ducts

6" ducts

6" ducts

6" ducts

6" ducts

6" ducts

6" ducts

6" ducts

6" ducts

6" ducts

6" ducts

6" ducts

6" ducts

6" ducts

6" ducts

6" ducts

6" ducts

6" ducts

6" ducts

6" ducts

6" ducts

6" ducts

6" ducts

6" ducts

6" ducts

6" ducts

6" ducts

6" ducts

6" ducts

6" ducts

6" ducts

6" ducts

6" ducts

6" ducts

6" ducts

6" ducts

6" ducts

6" ducts

6" ducts

6" ducts

6" ducts

6" ducts

6" ducts

6" ducts

6" ducts

6" ducts

6" ducts

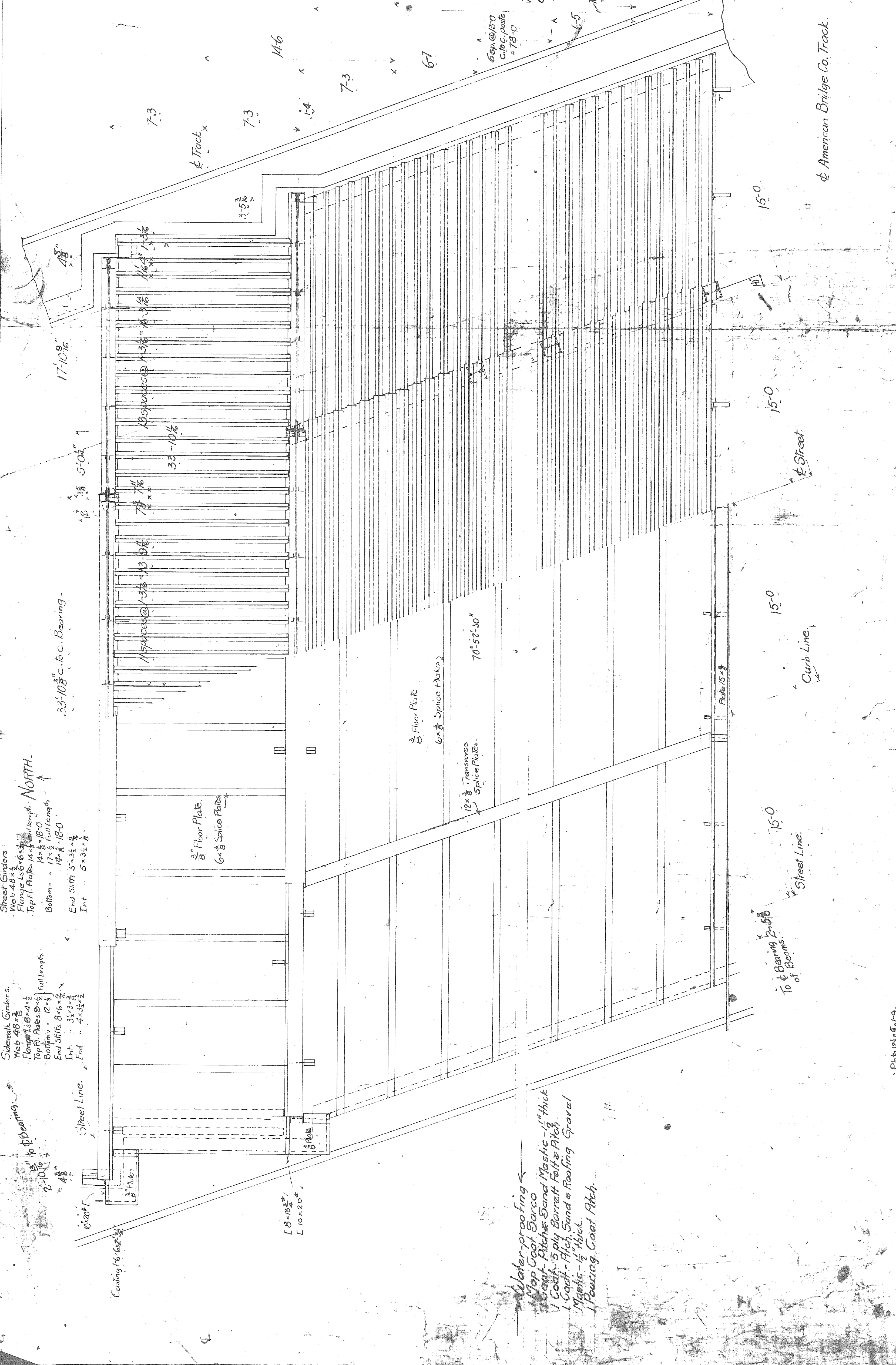
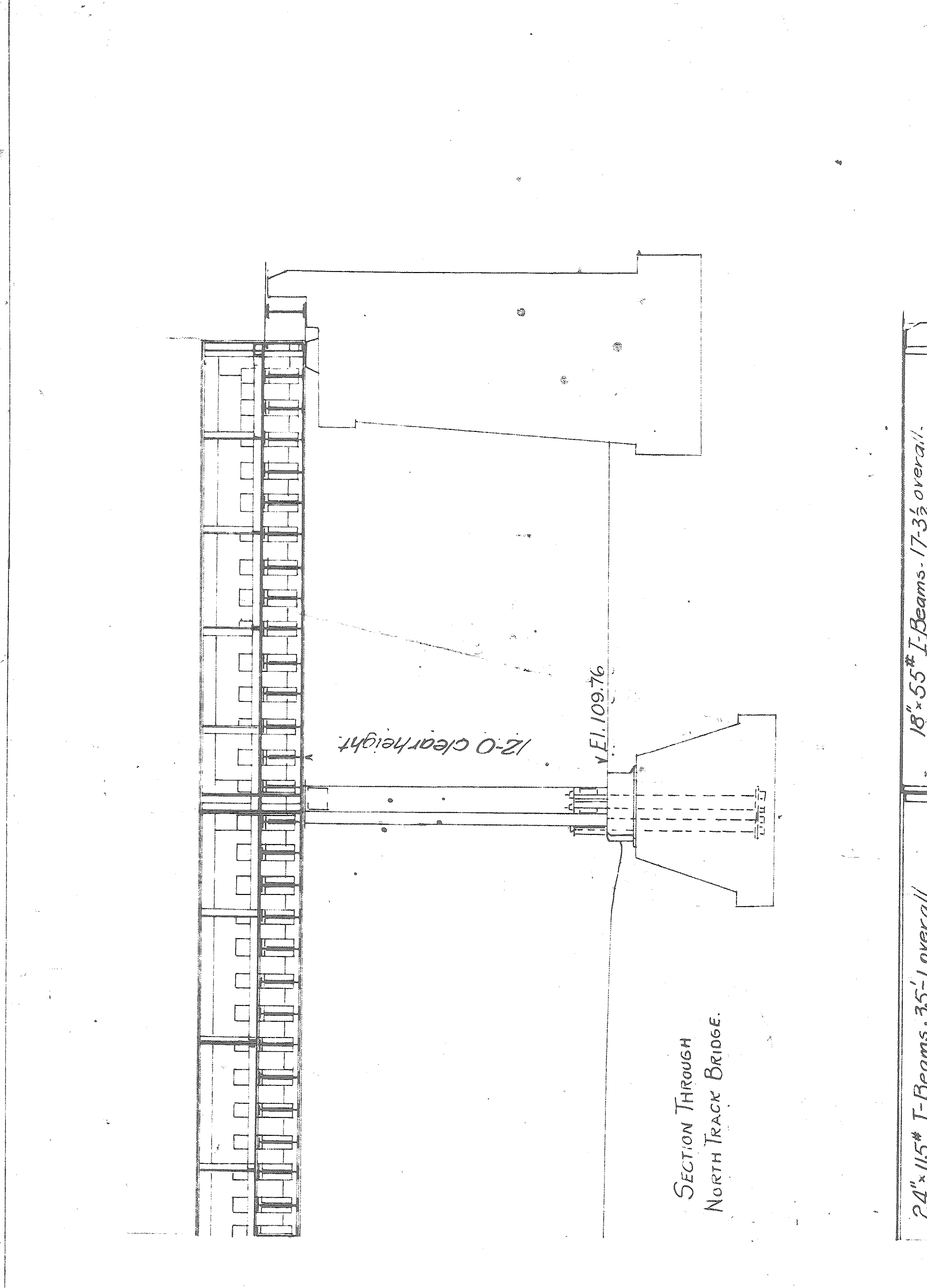
6" ducts

6" ducts

6" ducts

Side Rail Girders
 Web 48" x 1/2"
 Flange 18" x 1/2"
 Top Fl. P. 1/2" x 1/2"
 Bottom Fl. P. 1/2" x 1/2"
 End Stiff. 5" x 1/2"
 Int. 4" x 1/2"

Main Girders
 Web 48" x 1/2"
 Flange 18" x 1/2"
 Top Fl. P. 1/2" x 1/2"
 Bottom Fl. P. 1/2" x 1/2"
 End Stiff. 5" x 1/2"
 Int. 4" x 1/2"

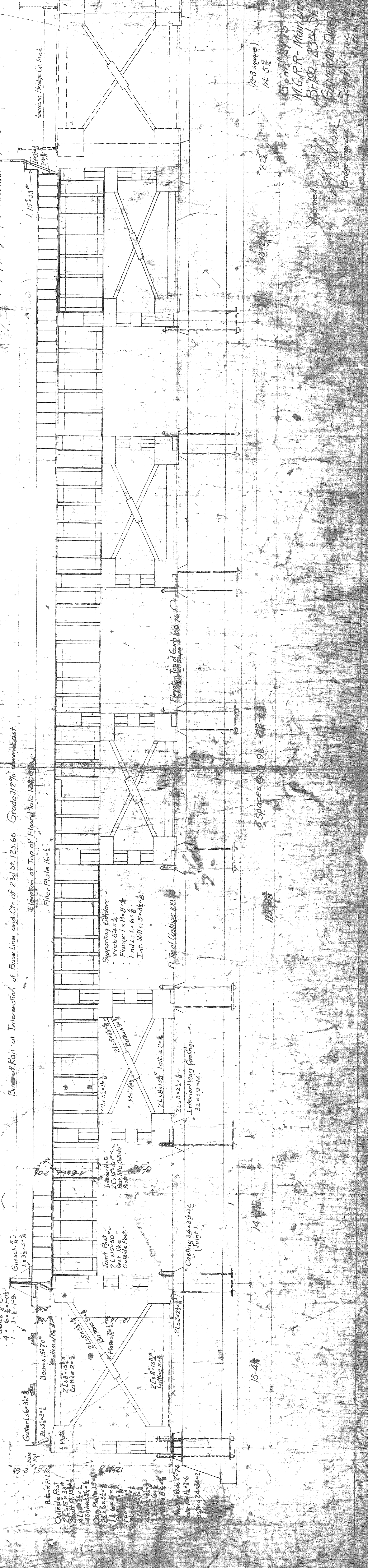


and substituting leg of size Ls also drill & Bolt of Girders on the N Track Bridge, 4" x 3" Patch 1/2" Other rivets 3/8"
 - Drill holes in material more than 3/8" thick. Patch holes for 3/8" rivets in material 3/8" or less in thickness 1/2" rebate 1/2" after assembling - except bottom flg Ls and Plates and lower 3/4 of web on Supporting Girders and N Track Girders which are to be punched 1/2", rebated to 3/8" before assembling and to 1/2" after assembling.
 Ream holes for field rivets, except in floor plates, top Flanges of floor beams, and in the top of sides of an iron templates, also ream top of floor beams, and in the ends of floor beams, and in the ends of floor beams, and in the ends of floor beams, and in the ends of floor beams.

Material Steel, 1904 Specifications.
 Plates less than 3/8" thick to have rolled edges.
 Plane sheared ends and edges of webs & fit end stiffening Ls and shims of bottom, except for supporting girders.
 Fit all stiffening Ls at top.
 -Fit stiffening Ls and shims on Supporting Girders top.

Plane Castings and Cap Plates top and bottom, except for bottom of Cap Plate only Base Plates bottom - Castings Steel.
 End connection rivets in Supporting Girders. Plane rivets in flanges of 8" F. stiffeners and out standing legs, concrete guard on N Track Bridge 3/4" x 1/2" thick 1/2" Rivets in floor plates, top flanges of floor beams.

Bolt all loose material for shipment.



Contract 5475
 M.C.R.R. Main Line
 Br 100-23rd St
 General Division
 Bridge Engineer
 Scale 1/8" = 1'-0"