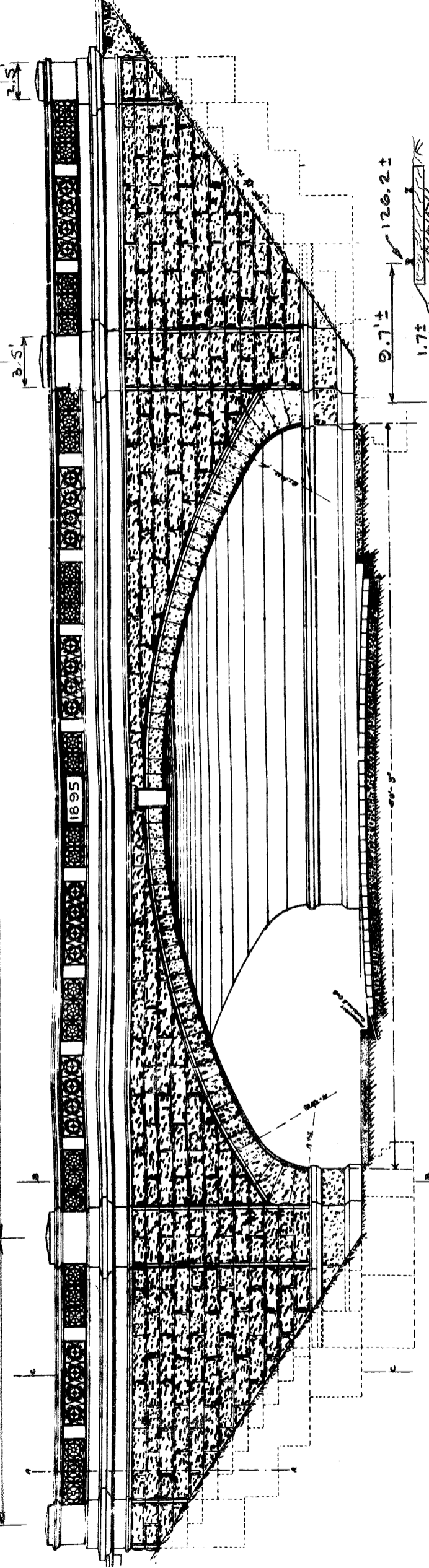


59.2'

19.5'



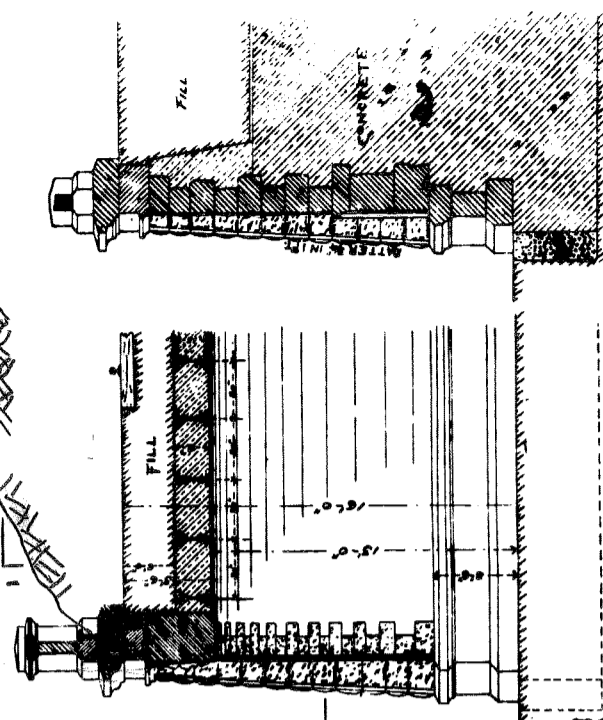
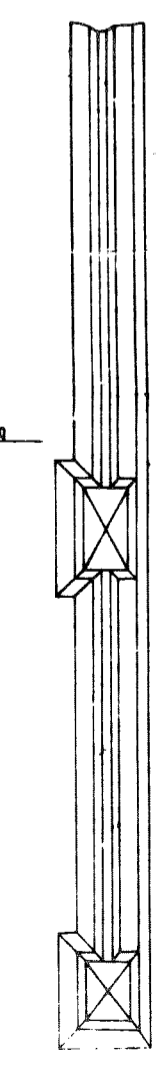
MELAN ARCH

→ SUBWAY UNDER THE M. C. R. R. TRACKS

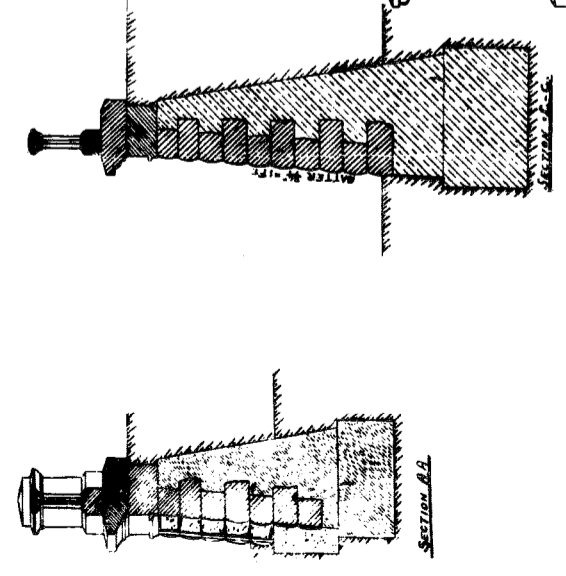
AT TWENTY SEVENTH STREET

WEST GRAND BLVD. SOUTH OF MICHIGAN AVE.

SHEET NO. 2.



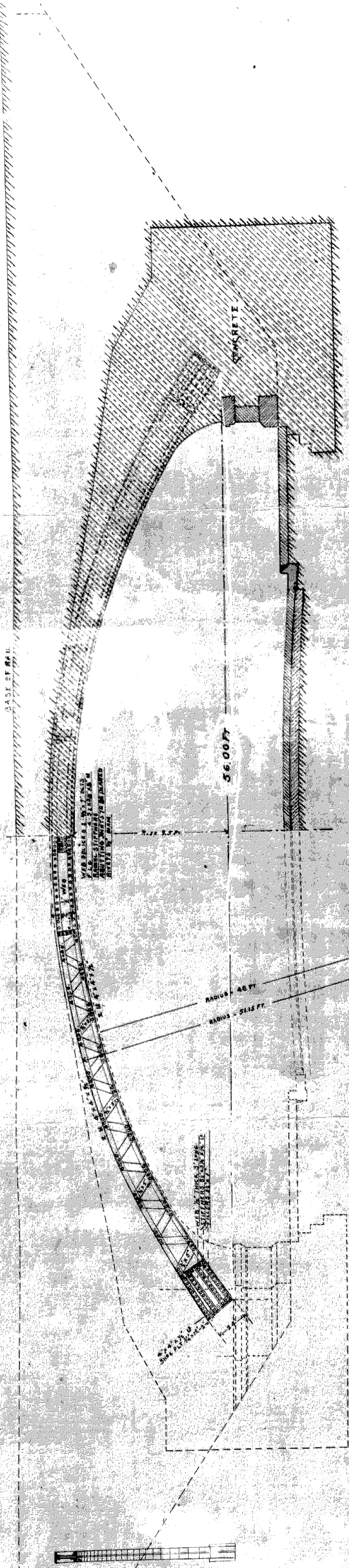
SECTION AT CROWN OF ARCH
 EXISTING NORTH FASCIA
 1/8" = 1'-0"
 (1962)



SECTION B.B.
 COMMISSIONERS OF PARKS & BOULEVARDS
 REVISIONAL ENCL.
 SERIES J. 17

RAILING SCALE 1/4" = 1'

File XU 49-1



HALF LONGITUDINAL SECTION

HALF ELEVATION METAL ARCH RIBS

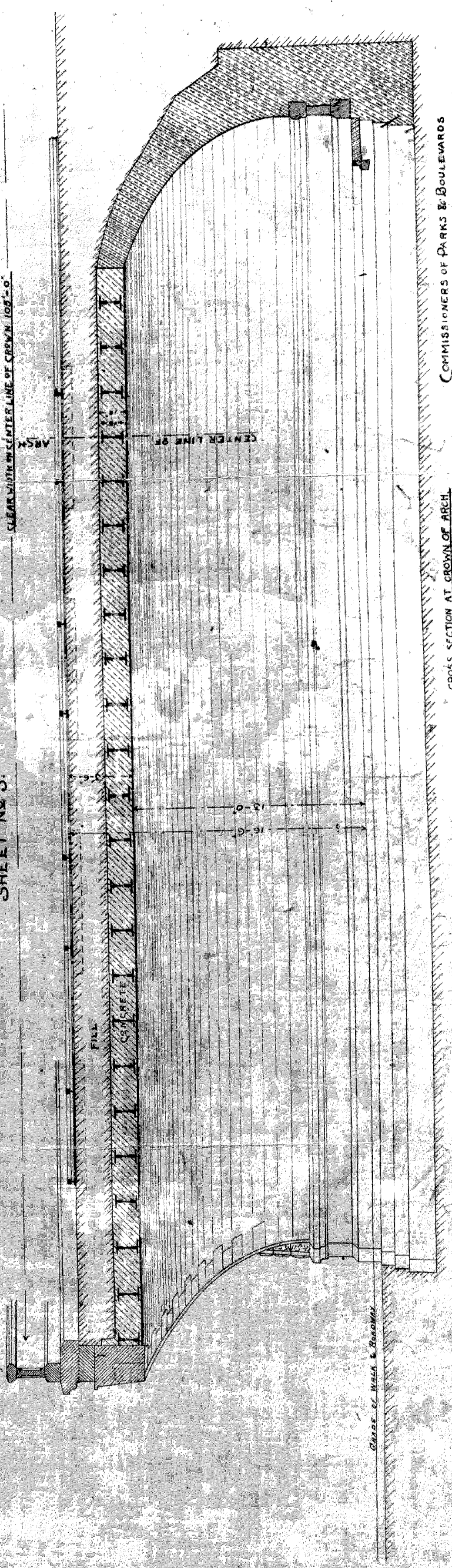
MELAN ARCH

SUBWAY UNDER THE M.C.R.R. TRACKS

AT TWENTY SEVENTH STREET

DETROIT - MICH.

SHEET NO 3.



CROSS SECTION AT CROWN OF ARCH

COMMISSIONERS OF PARKS & BOULEVARDS
W. H. ASHVELL, ENGINEER.

SCALE 3/16" = 1" IN

File XU49-2