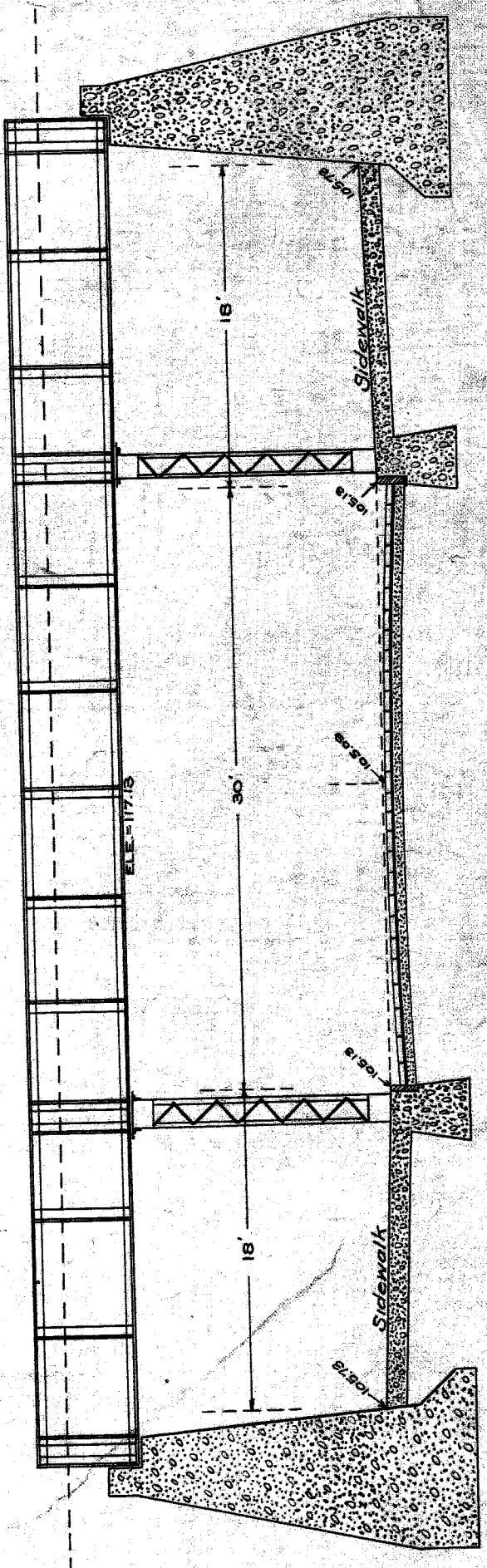
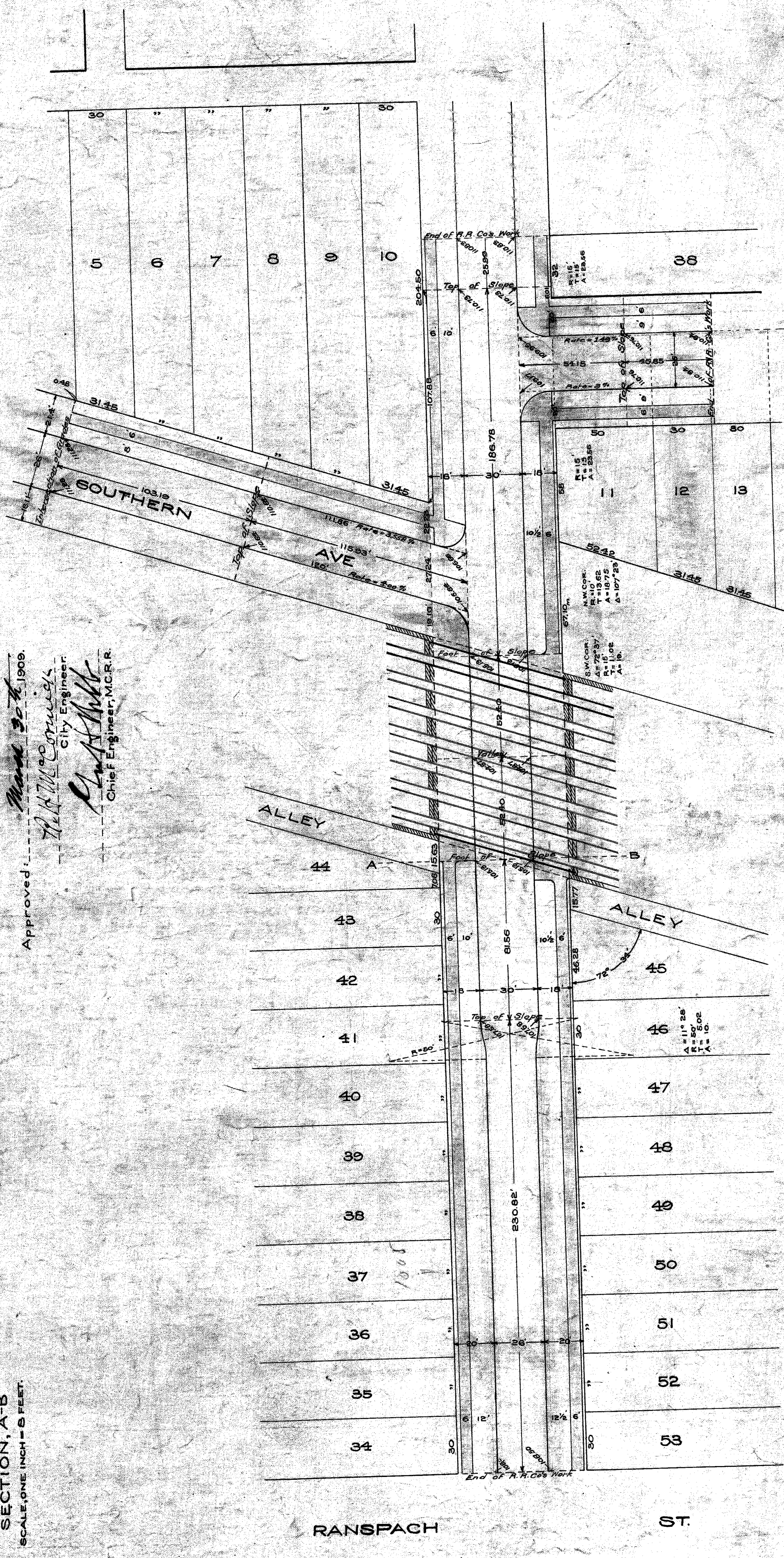


PLAN OF PROPOSED
SUBWAY IN
MILITARY AVENUE
UNDER
M.C.R.R.

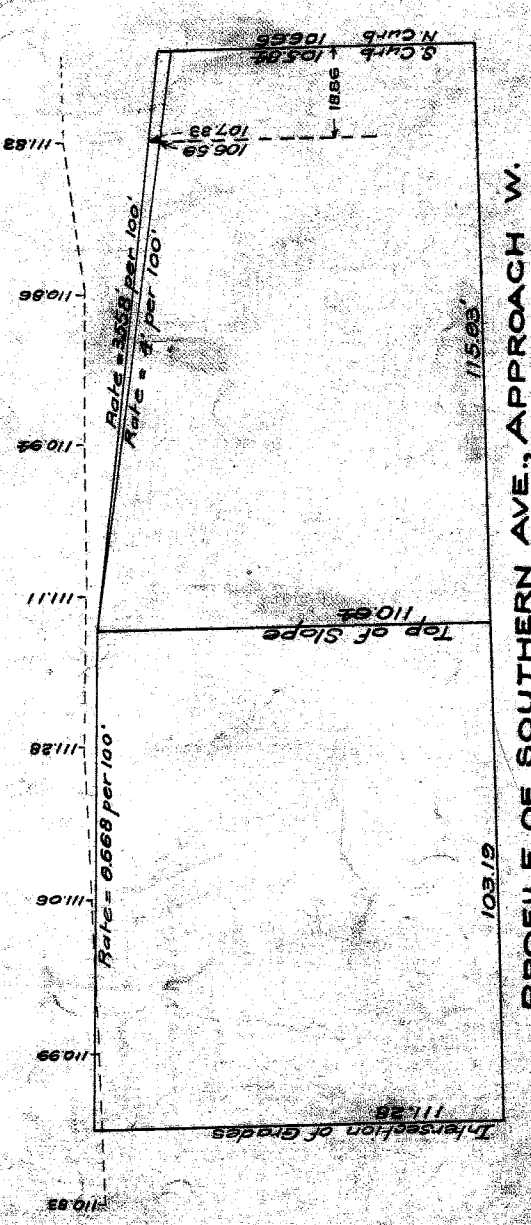


SECTION A-B
SCALE ONE INCH = 8 FEET

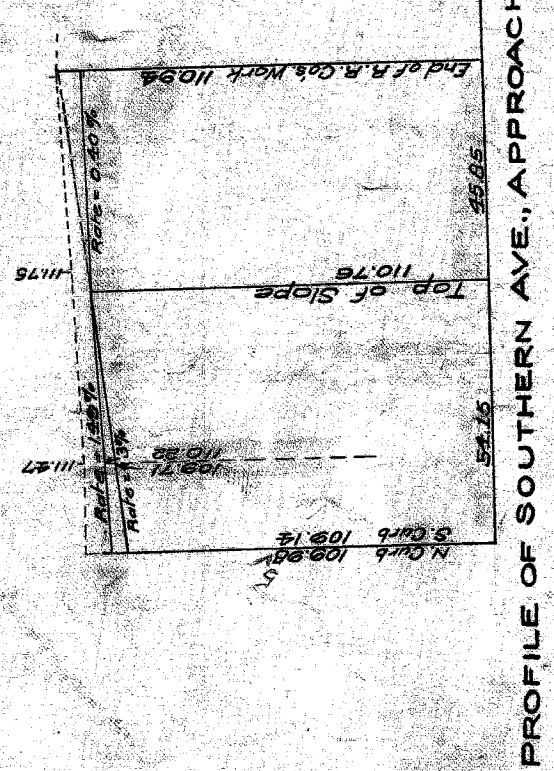
Approved *March 30th 1900.*
W.H. McCallister
City Engineer
W.H. McCallister
Chief Engineer, M.C.R.R.



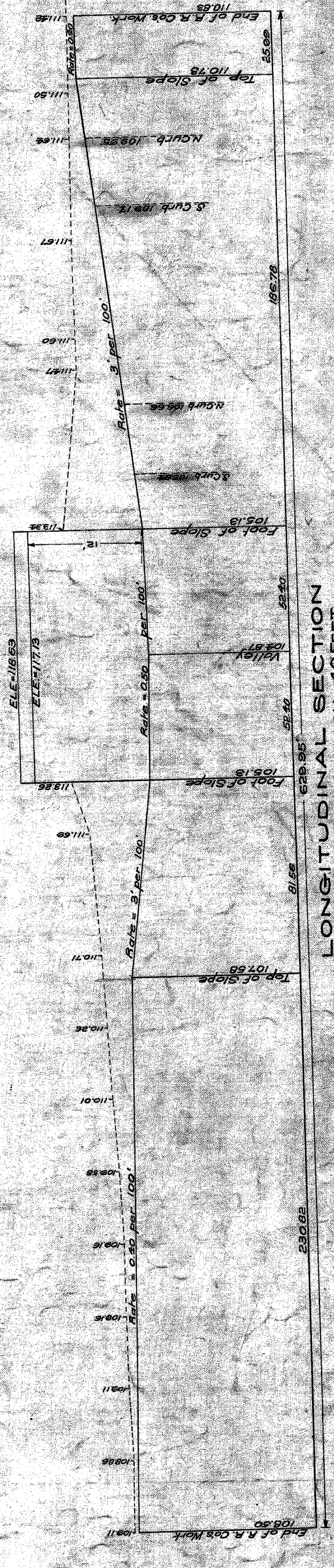
PLAN
SCALE ONE INCH = 40 FEET



PROFILE OF SOUTHERN AVE., APPROACH W.



PROFILE OF SOUTHERN AVE., APPROACH EAST



LONGITUDINAL SECTION
SCALE ONE INCH = 40 FEET

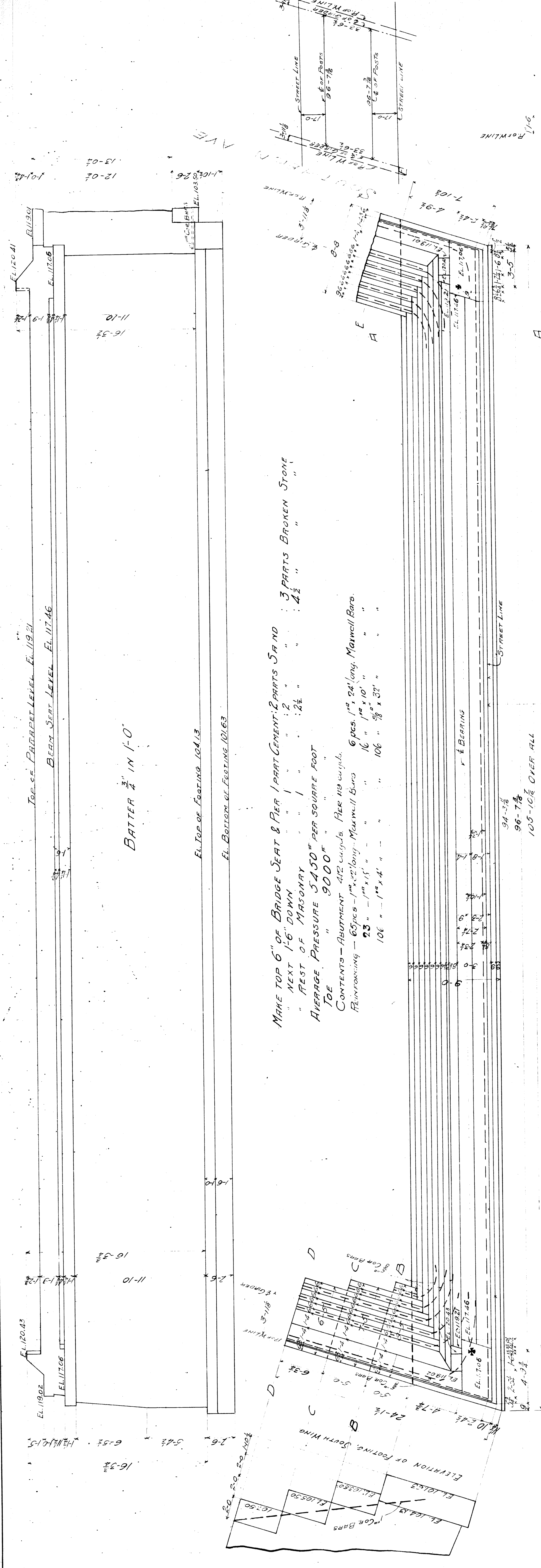
MILITARY AVENUE

CITY ENGINEERS OFFICE
GRADE, SEWER, AND BRIDGES

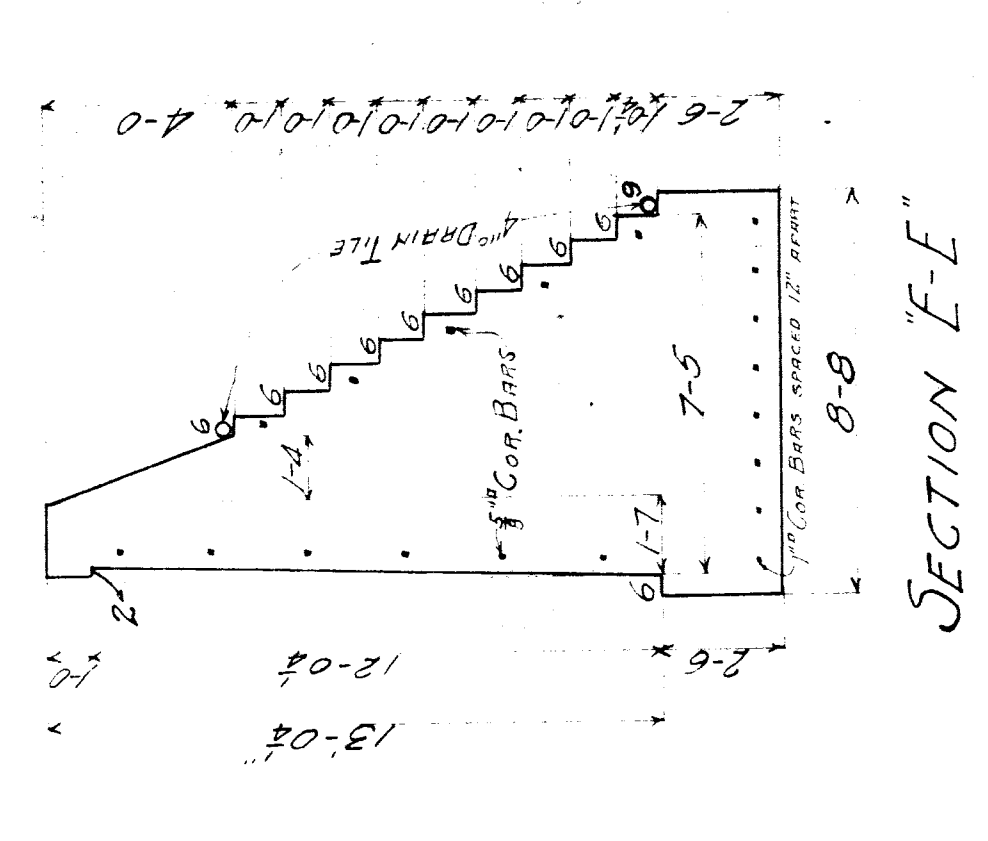
Drawn by John W. Reid, Mar. 2, 1900.
A 2-1-10
File XU45-1

CITY ENGINEER'S OFFICE.

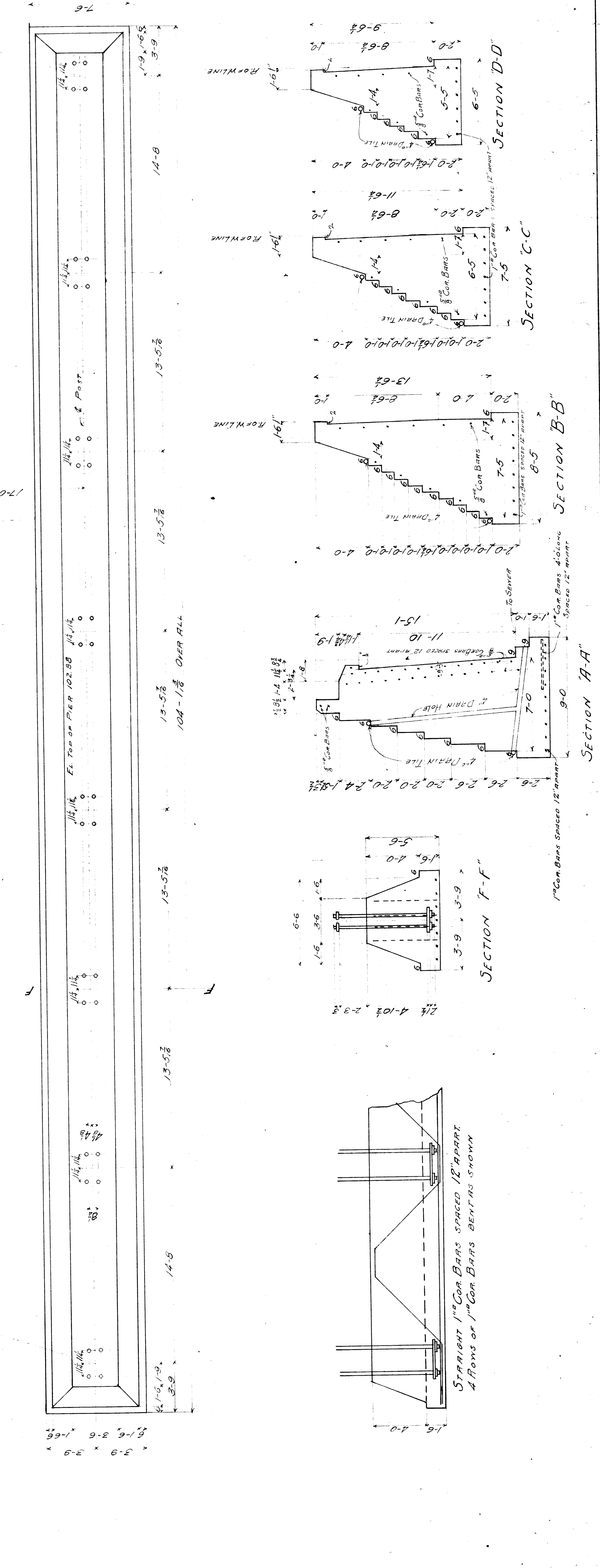
A 2-1-10
File XU45-1



MAKE TOP 6" OF BRIDGE SEAT & PIER 1 PART CEMENT: 2 PARTS SAND
 " NEXT 1-6" DOWN " : 2 " : 2 1/2 " : 3 PARTS BROKEN STONE
 " REST OF MASONRY " 1 " : 2 1/2 " : 4 1/2 "
 AVERAGE PRESSURE 5450# PER SQUARE FOOT
 JOE
 CONTENTS - ABUTMENT 412 cu yds. Pier 119 cu yds.
 REINFORCING - 65 pcs - 1" dia. long. Maxwell Bars 6 pcs. 1" dia. long. Maxwell Bars.
 23 " - 1" x 18 " " " 106 " 3/8" x 32 " " "



APPROVED: *[Signature]*
 BRIDGE ENGINEER
 M.C.A.R. MAINLINE
 BR 3RD MILITARY AVE.
 WEST ABUTMENT AND PIER.
 SCALE 1/4" = 1'-0"
 MAY 1909
 CH. 348



TOP OF PARAPET LEVEL EL. 119.21
BEAM SEAT LEVEL EL. 117.46

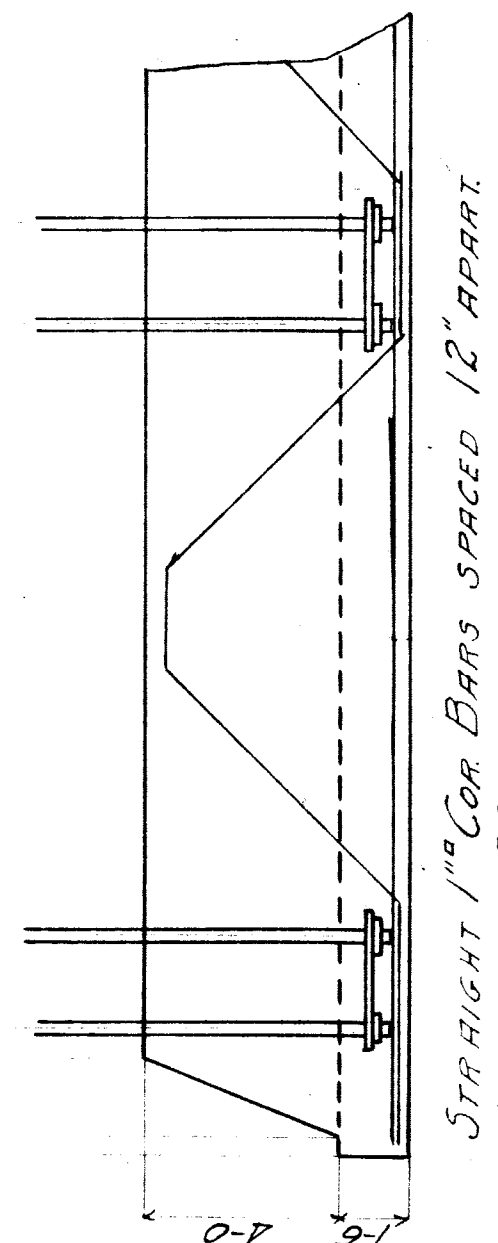
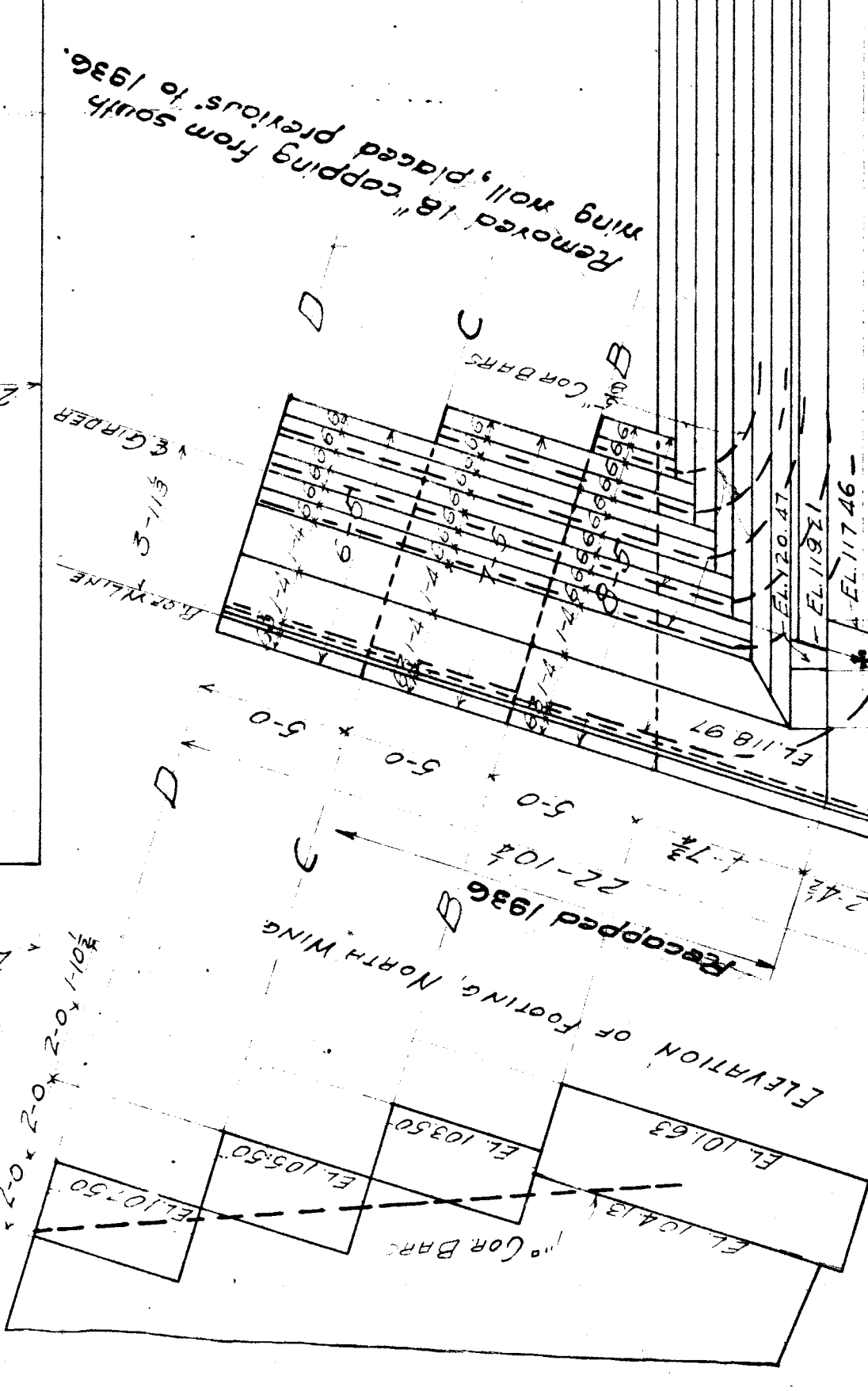
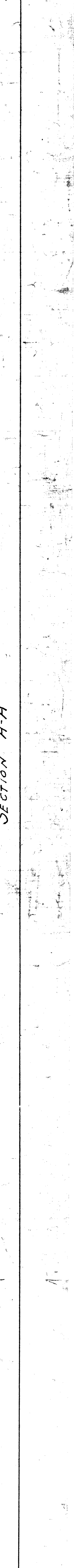
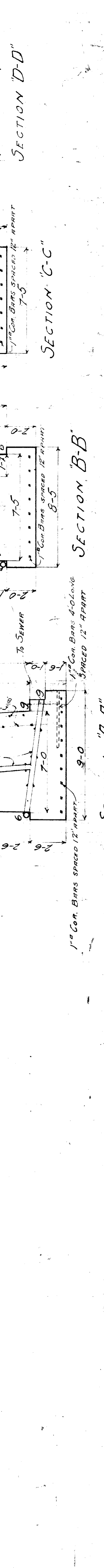
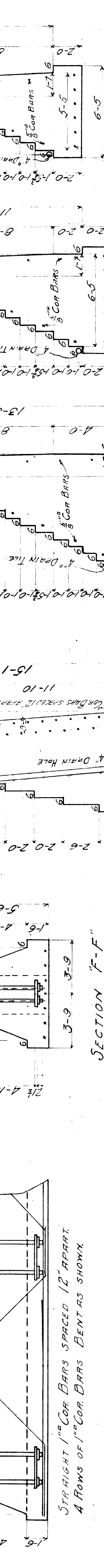
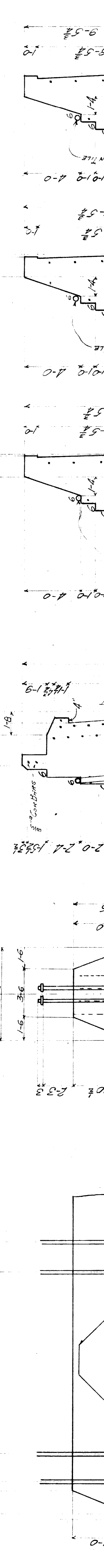
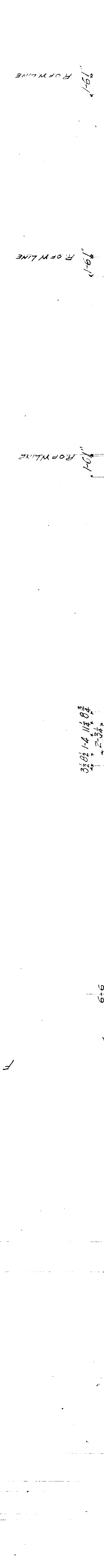
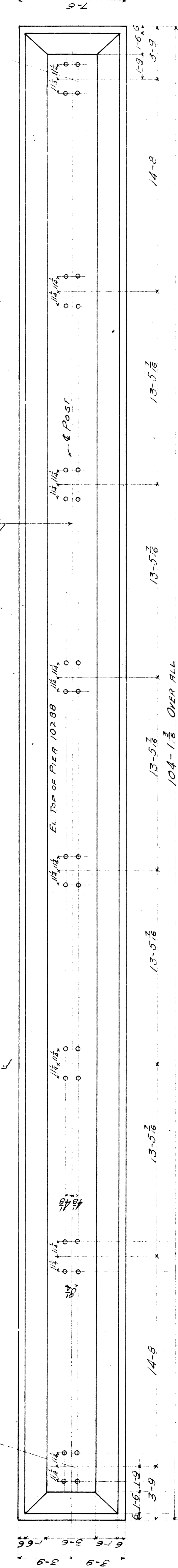
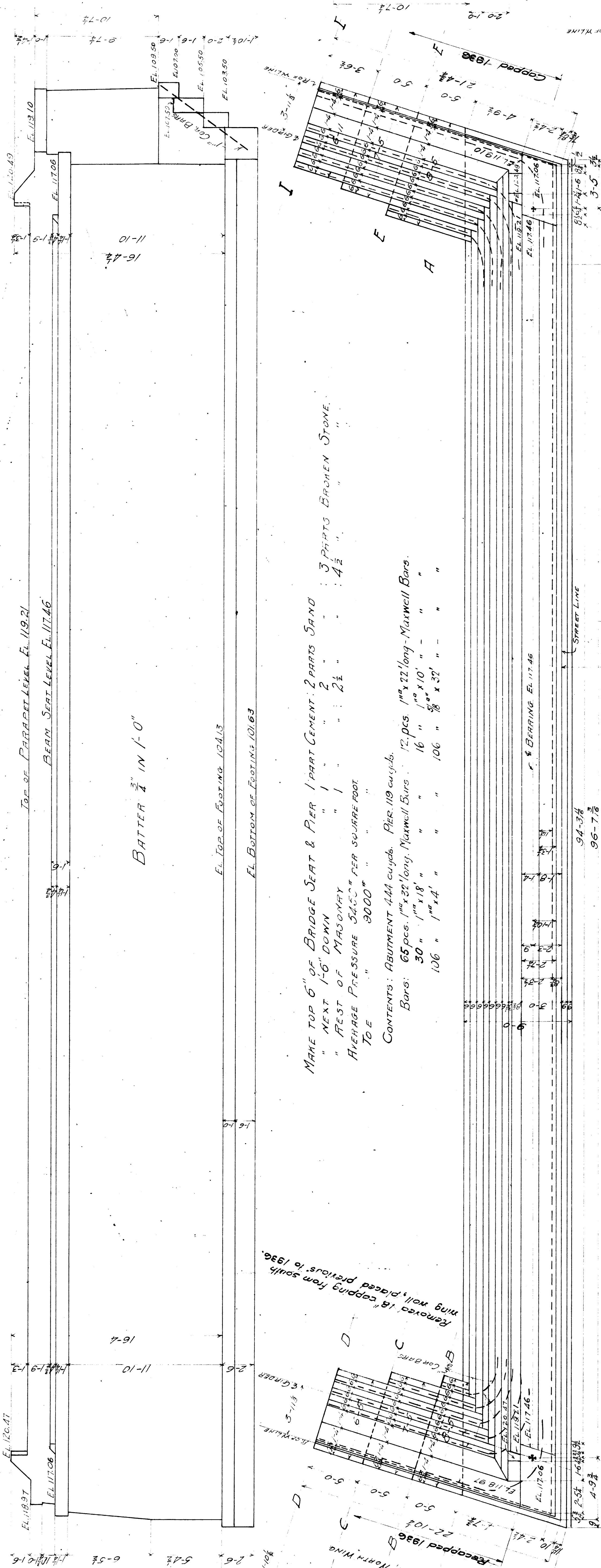
BATTER $\frac{1}{4}$ " IN 1'-0"

EL. TOP OF FOOTING 104.13
EL. BOTTOM OF FOOTING 101.63

MAKING TOP 6" OF BRIDGE SEAT & PIER 1 PART CEMENT, 2 PARTS SAND
" NEXT 1-6" DOWN " 1 PART CEMENT, 2 PARTS SAND
" REST OF MASONRY " 1 " 2 1/2 " 3 PARTS BROKEN STONE
AVERAGE PRESSURE 3450# PER SQUARE FOOT
TO BE " 3000"

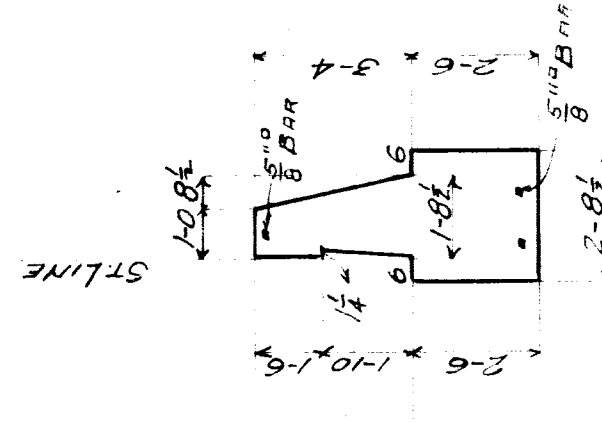
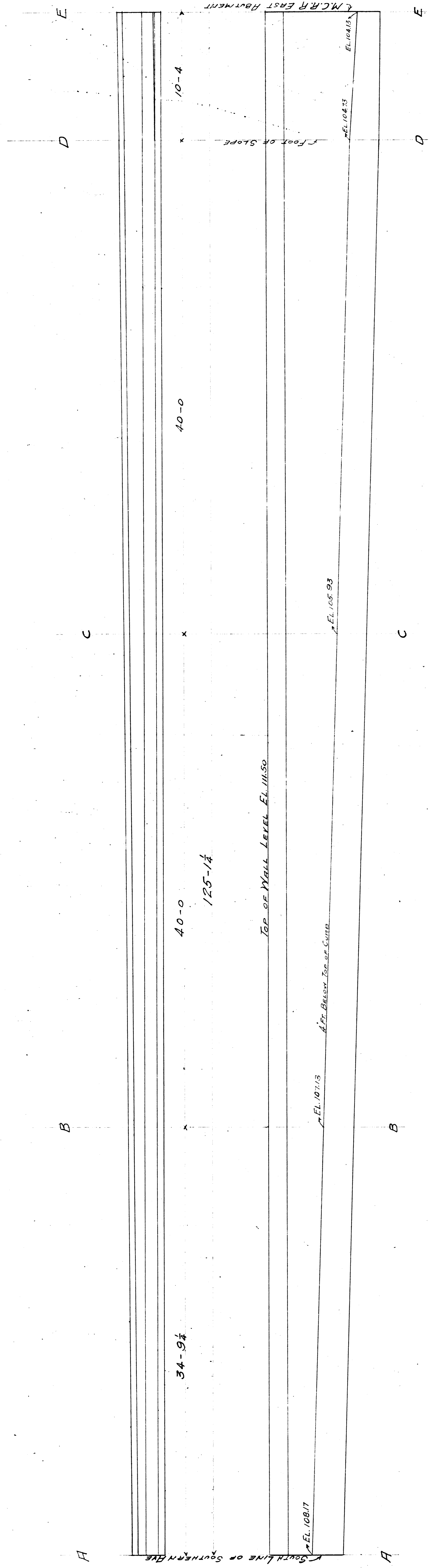
CONTENTS: ABUTMENT 444 cu yds. Pier 119 cu yds.
BARS: 65 pcs. 1" x 32' long, Maxwell Bars. 12 pcs. 1" x 22' long, Maxwell Bars.
30 " 1" x 18 " " " 16 " 1" x 10 " " " "
106 " 1" x 4 " " " 106 " 1/2" x 32' " " " "

94-3 3/4
96-7 1/8
105-10 1/8 OVER ALL

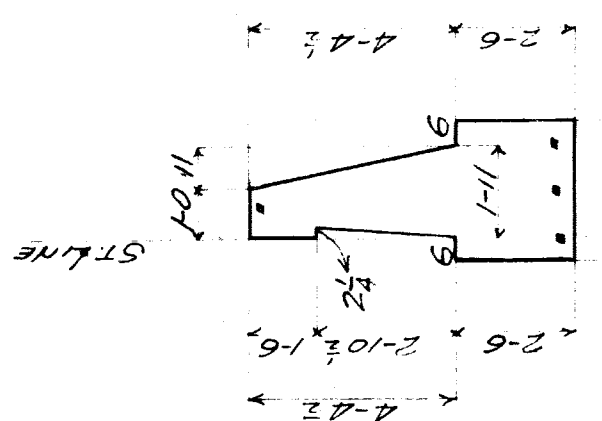


APPROVED: *W. H. Wells*
BRIDGE ENGINEER

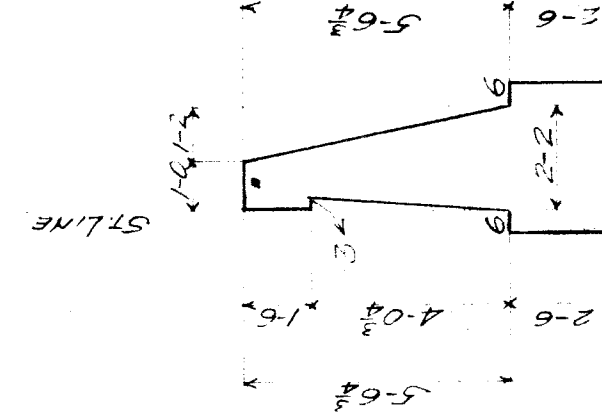
Wing Wells Capped 1936
M.C.A.R. MAIN LINE
BR 3rd MILITARY AVE.
EAST ABUTMENT AND PIER
SCALE 1/4"=1'-0" MAY 1909



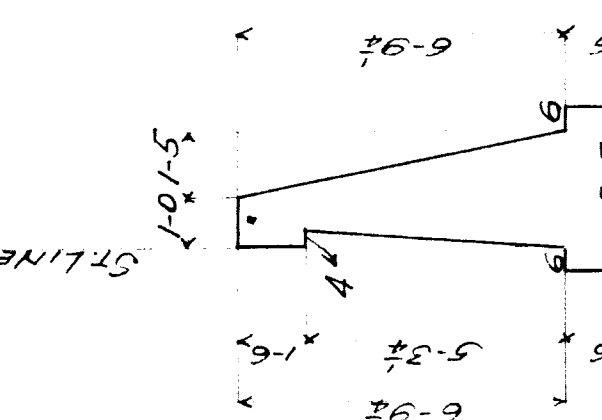
SECTION "A-A"



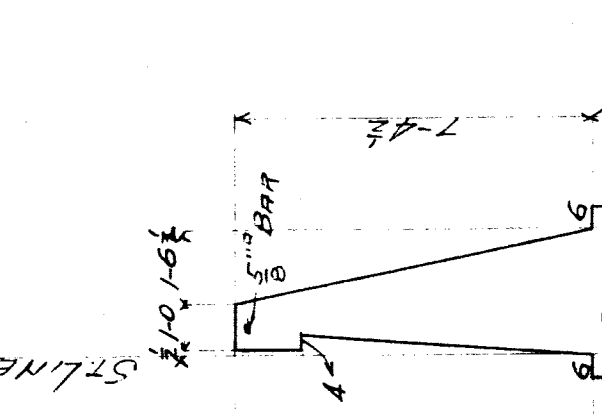
SECTION "B-B"



SECTION "C-C"



SECTION "D-D"



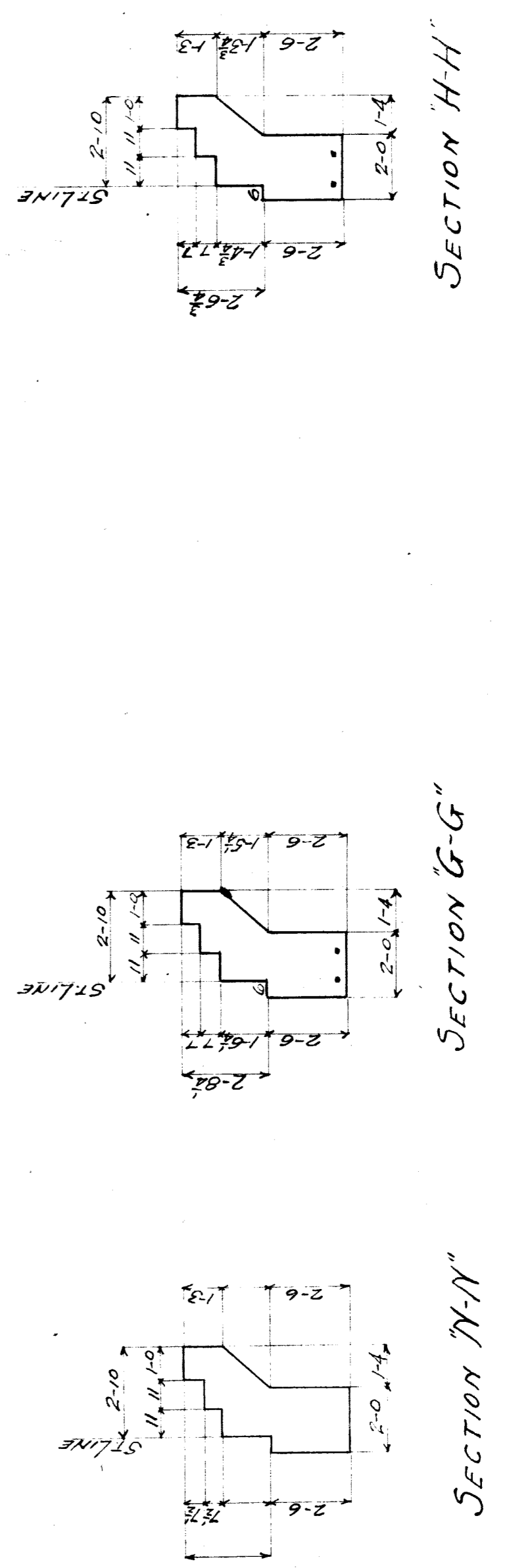
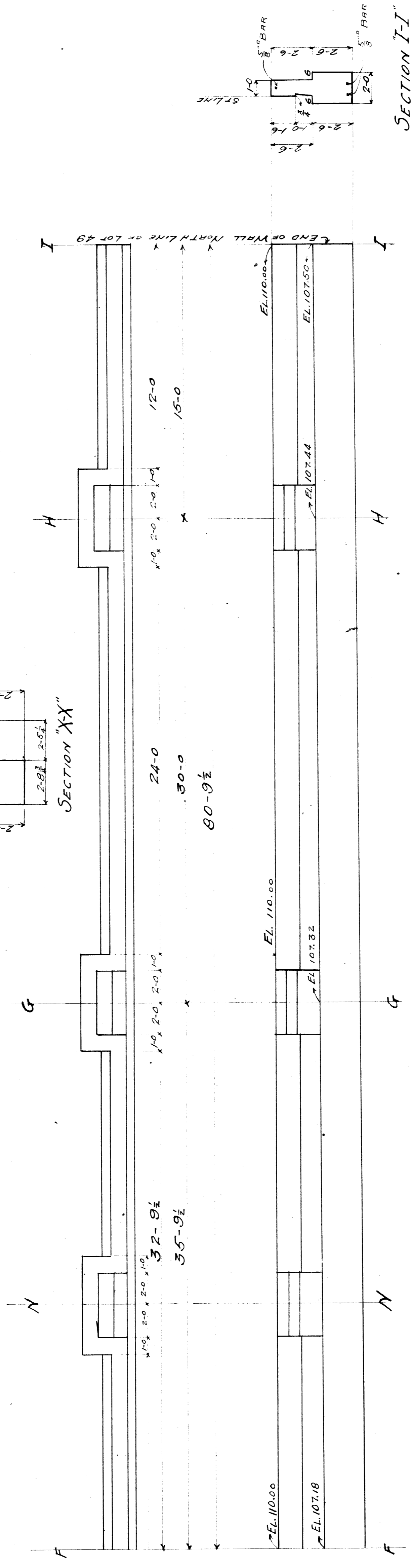
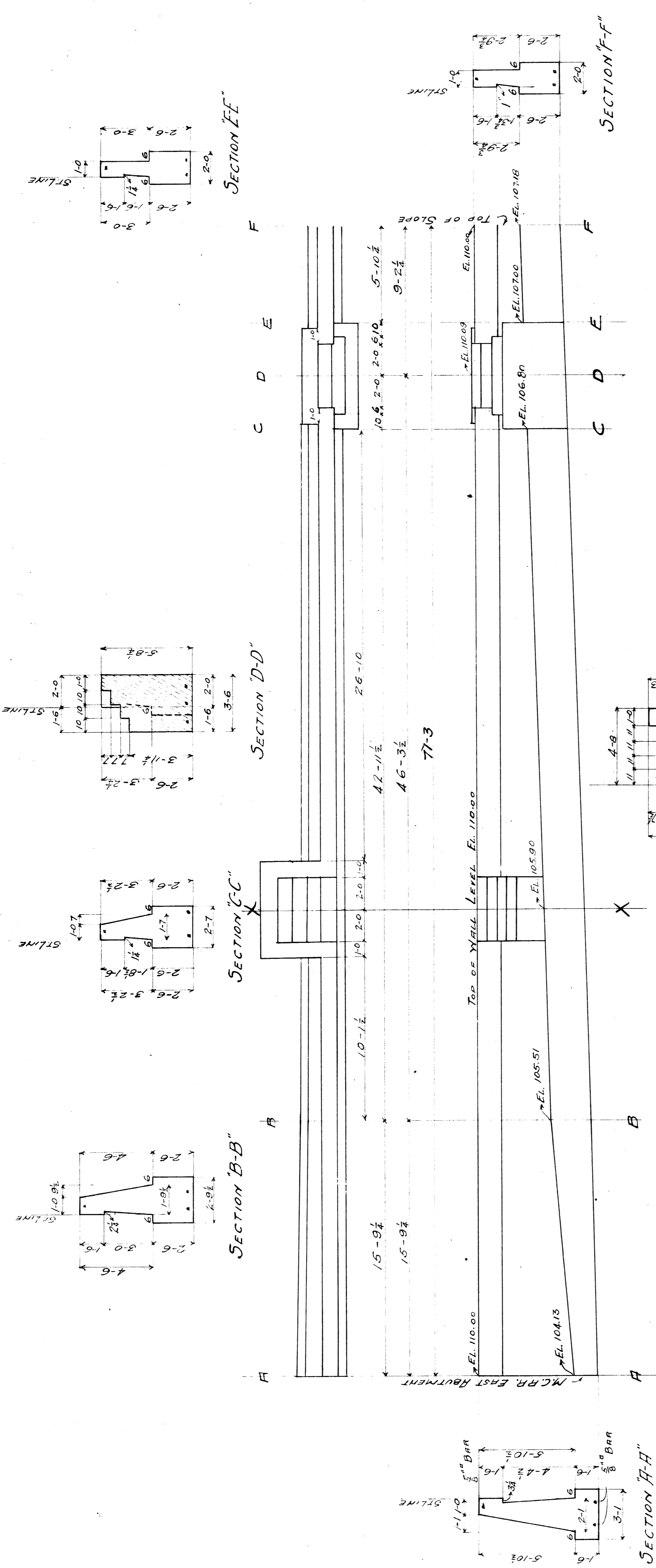
SECTION "E-E"

MAINE CONCRETE: 1 PART CEMENT: 2 1/2 PARTS SAND: 4 1/2 PARTS BROKEN STONE.
 CONTENTS 74 Cu. Yds.

M.C.R.R. MAIN LINE
 BR # 322 MILITARY AVE.
 RETAINING WALL NORTH OF R.O.F. W. EAST SIDE
 SCALE 1/4" = 1'-0" H.E. SEPT. 1909

APPROVED:

BRIDGE ENGINEER



MAKE CONCRETE: 1 PART CEMENT, 2 1/2 PARTS SAND, 4 1/2 PARTS BROKEN STONE.
 CONTENTS 58.5 CU. YDS.

M.C.R.R. MAIN LINE.
 BR. #322 MILITARY AVE.
 RETAINING WALL SOUTH OF FOOT OF W. EASTSIDE
 SCALE 1" = 10' SEPT 1909

APPROVED:
 BRIDGE ENGINEER