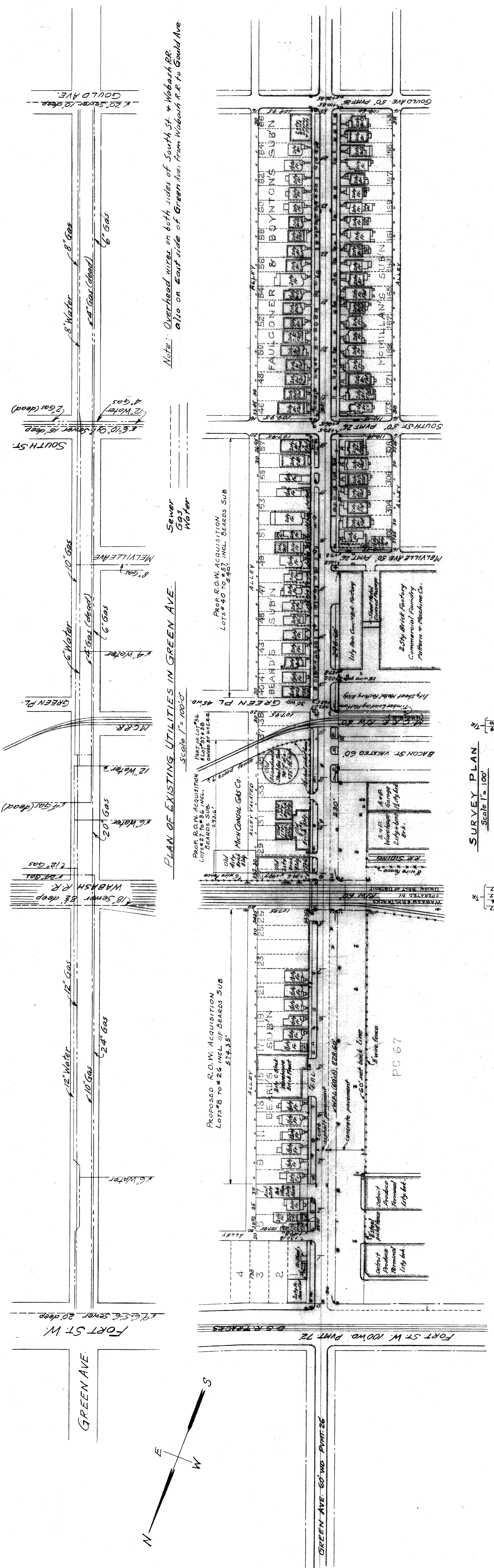


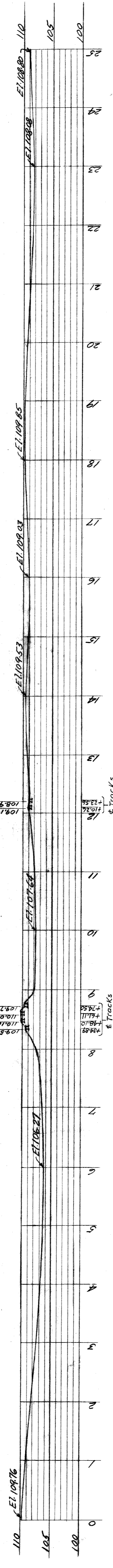
3 BP-528-45
 5 BP-7-24-45
 8 BP-7-14-45
 8 BP-9-15-45
 2 BP-12-15-45



Note: Overhead wires on both sides of South St. + Wabash R.R. also on East side of Green Ave. from Wabash R.R. to Gould Ave.

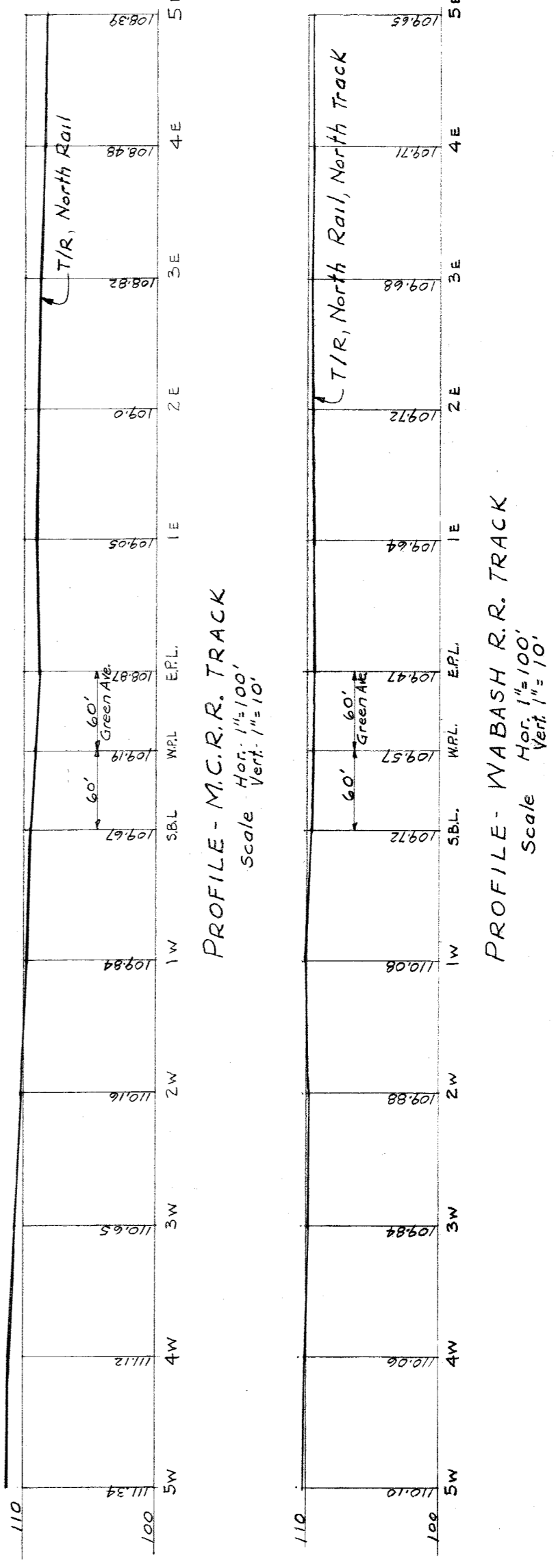
PLAN OF EXISTING UTILITIES IN GREEN AVE. Scale 1" = 100'-0"

SURVEY PLAN Scale 1" = 100'

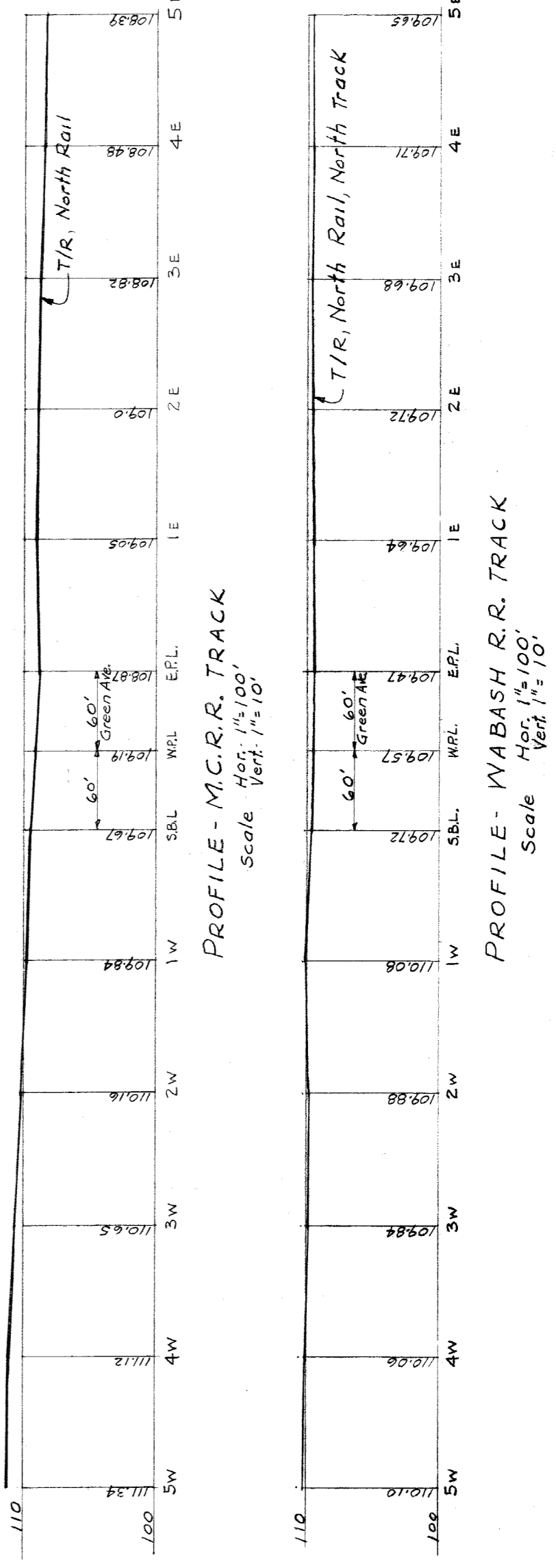


EXISTING PROFILE ON E GREEN AVE. (60' WIDE) Scale - Horizontal 1" = 100', Vertical 1" = 10'

- LEGEND
- Sewer Manhole
 - Water Gate Manhole
 - Gas Co. Manhole
 - Telephone Co. Manhole
 - P.L.C. Pole
 - Detroit Edison Co. Manhole
 - General Motors Pole
 - Street Sign Post
 - Mast Arm Light Pole
 - Boulevard Light Pole
 - Traffic Signal
 - R.R. Signal
 - Mail Box
 - Stop Street Sign
 - No Parking Sign
 - R.R. Crossing Gate
 - R.R. Watchman's Tower
 - Tree



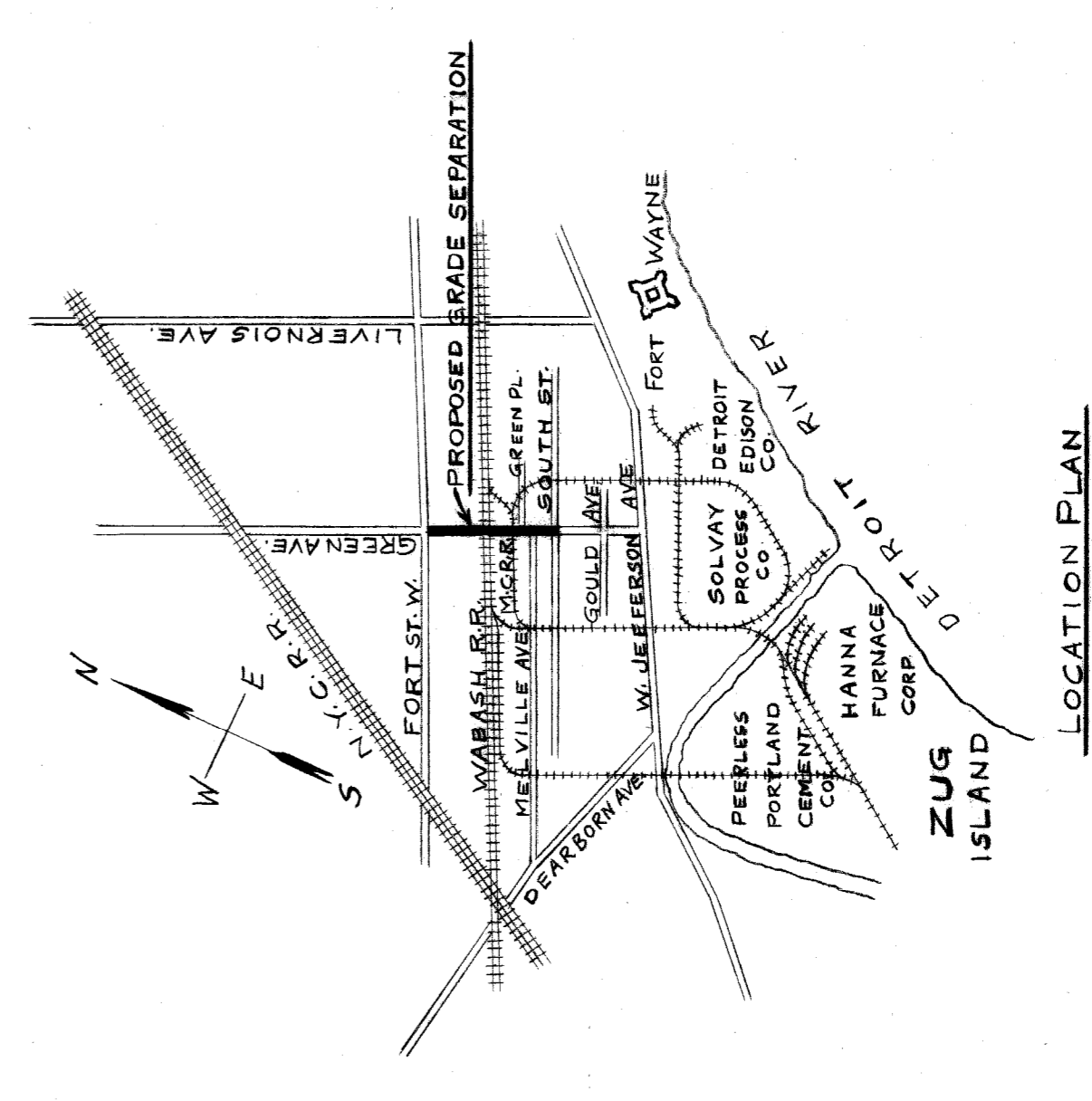
PROFILE - M.C.R.R. TRACK Scale Vert. 1" = 10'



PROFILE - WABASH R.R. TRACK Scale Vert. 1" = 10'

Field Books - No. 152741576

Bench Marks (Brass cap in concrete monument in hand hole in sidewalk)
 # 11-250 - EL. 109.846, located T.S. of N.W.L. Fort and at W. of E.A.L. Green.
 # 10-251 - EL. 110.079, located A.S. of N.L. Jefferson and at W. of E.A.L. Green.



LOCATION PLAN Scale 2" = 1 mile

Handwritten signature: A. B. Williams

<p>CITY OF DETROIT DEPARTMENT OF PUBLIC WORKS CITY ENGINEERS OFFICE BUREAU OF DESIGN</p>	<p>GRADE SEPARATION GREEN AVE. AND WABASH & PERE MARQUETTE R.R. (UNION BELT OF DETROIT) AND GREEN AVE. AND M.C.R.R. SPUR (N.Y.C.R.R.)</p>	<p>APPROVED: A. Berarducci A. B. White A. B. White Williams</p>	<p>DESIGNED BY DRAWN BY TRACED BY CHECKED BY</p>	<p>REVISIONS</p> <table border="1" style="width: 100%; border-collapse: collapse;"> <thead> <tr> <th>NO.</th> <th>DESCRIPTION</th> <th>DATE</th> </tr> </thead> <tbody> <tr> <td> </td> <td> </td> <td> </td> </tr> <tr> <td> </td> <td> </td> <td> </td> </tr> <tr> <td> </td> <td> </td> <td> </td> </tr> </tbody> </table>	NO.	DESCRIPTION	DATE									
NO.	DESCRIPTION	DATE														
<p>PRELIMINARY PLAN SURVEY PLAN</p>		<p>SCALE AS NOTED</p>		<p>SHEET <u>1</u> OF <u>3</u> SHEETS JOB No. <u>111</u> DRWG No. <u>X-720</u> DATE <u>Sept. 14, 1945</u></p>												

7 BR 7-14-85
 8 BR 9-15-85
 2 BR 12-15-85

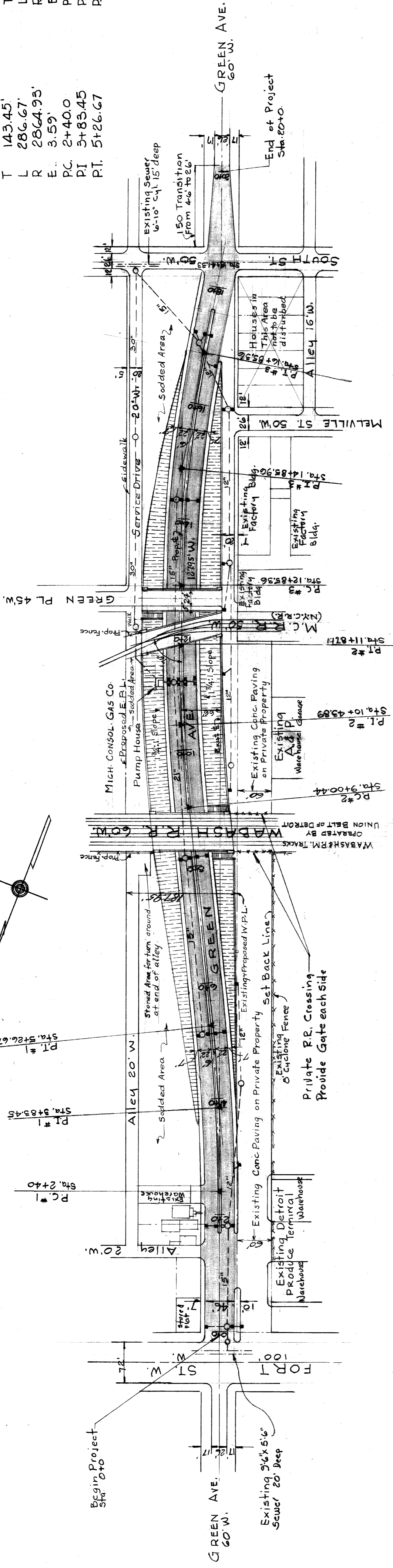
CURVE DATA

CURVE No.1		CURVE No.2		CURVE No.3	
A	5°44' L	A	5°44' R	A	10°40' R
D	2°	D	2°	D	2°40'
T	143.45'	T	143.45'	T	200.60'
L	286.67'	L	286.67'	L	400.0'
R	286.493'	R	286.493'	R	2148.79'
E	3.59'	E	3.59'	E	9.34'
PC	2+40.0	PC	9+00.44	PC	12+85.36
PI	3+83.45	PI	10+43.89	PI	14+85.96
PT	5+26.67	PT	11+87.11	PT	16+85.36

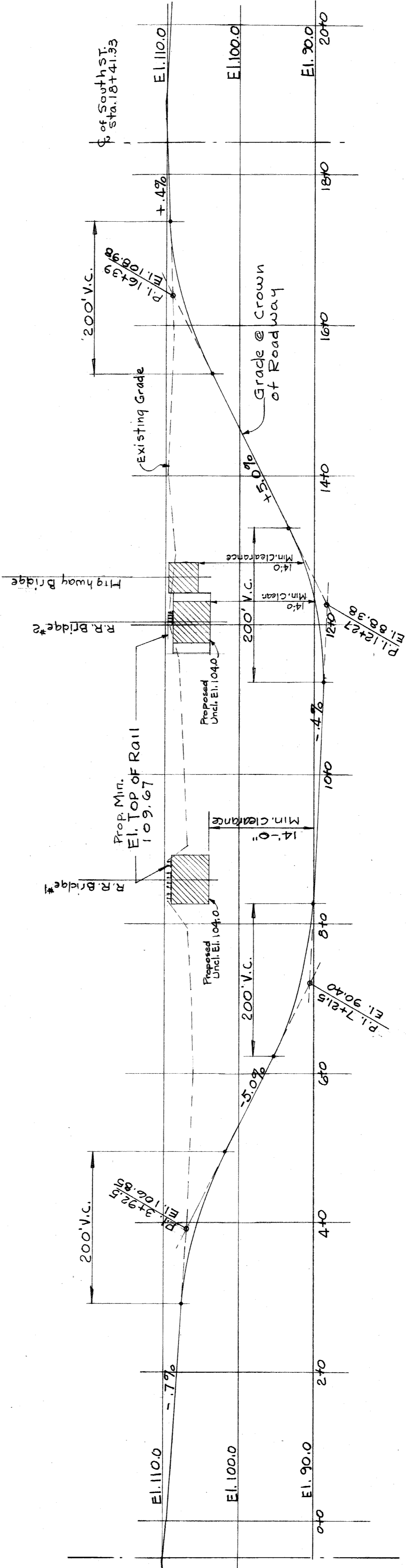
- LEGEND**
- Proposed Catch Basins
 - Manholes

- DESCRIPTION OF PROPOSED PROJECT**
- 1 Re-alignment of Green Ave. between Fort St. W. and South St. 66'-0" Offset East, Maximum Vehicular Underpass-Four (4) 11'-0" Lanes with 6'-0" center divider, Approaches in open cut with Sodded Side Slopes.
 - 2 One (1) - 4 Track R.R. Bridge-Wabash R.R.
 - 3 One (1) - 2 Track R.R. Bridge-M.C.R.R.
 - 4 One (1) - Highway Bridge-24'-0" Roadway.
 - 5 R.O.W. Acquisition-East Side
 - 6 Drainage System, with Pumping Station
 - 7

*Preliminary
 For Office
 Only*



GENERAL PLAN
 Scale 1"=100'

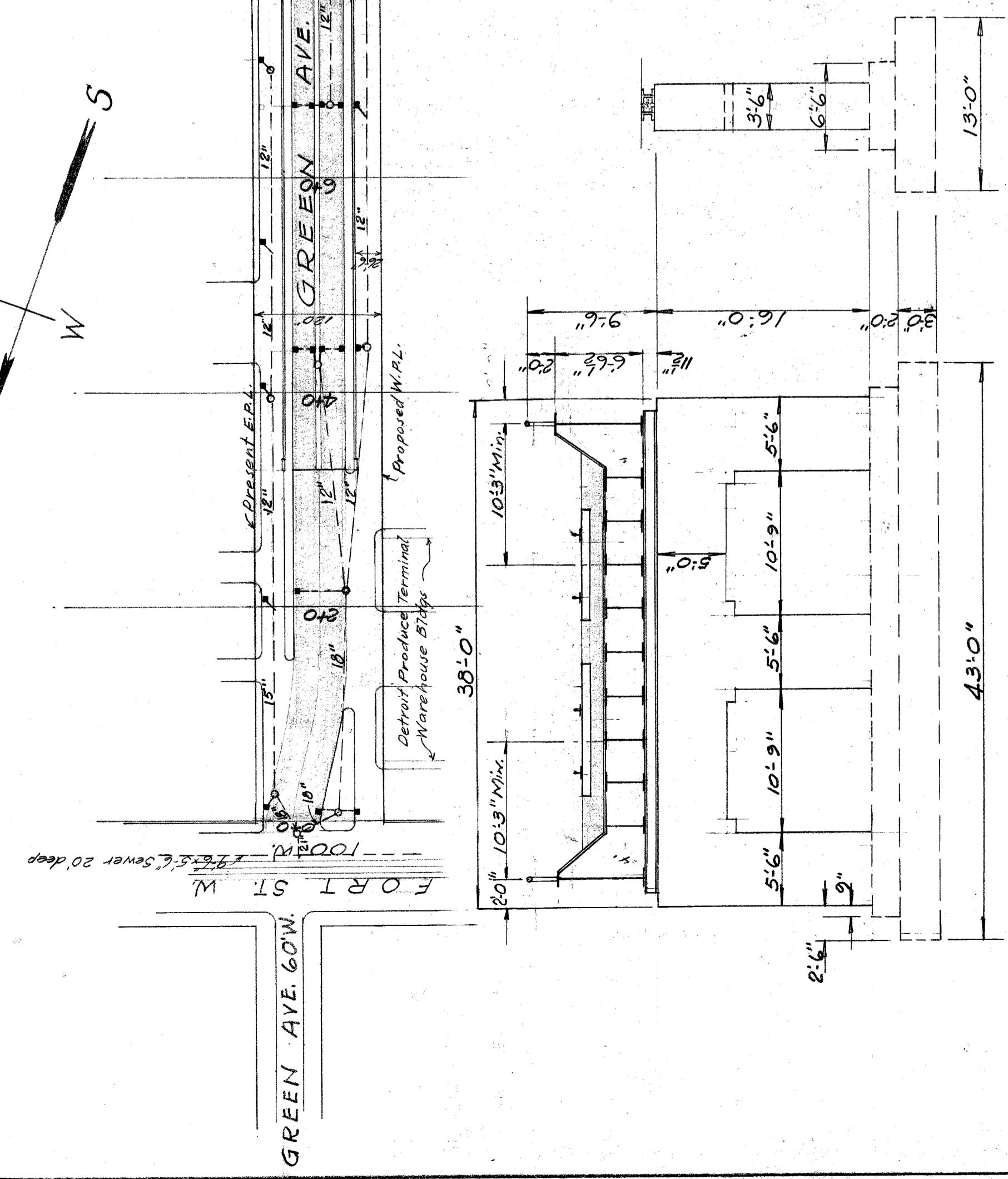
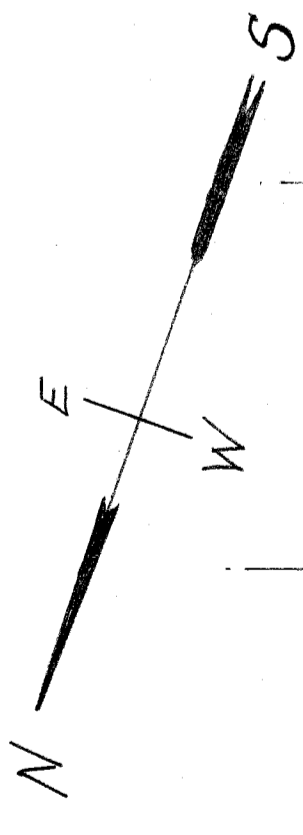


PROFILE
 GREEN AVE.
 Scale Horiz. 1"=100'
 Vert. 1"=10'

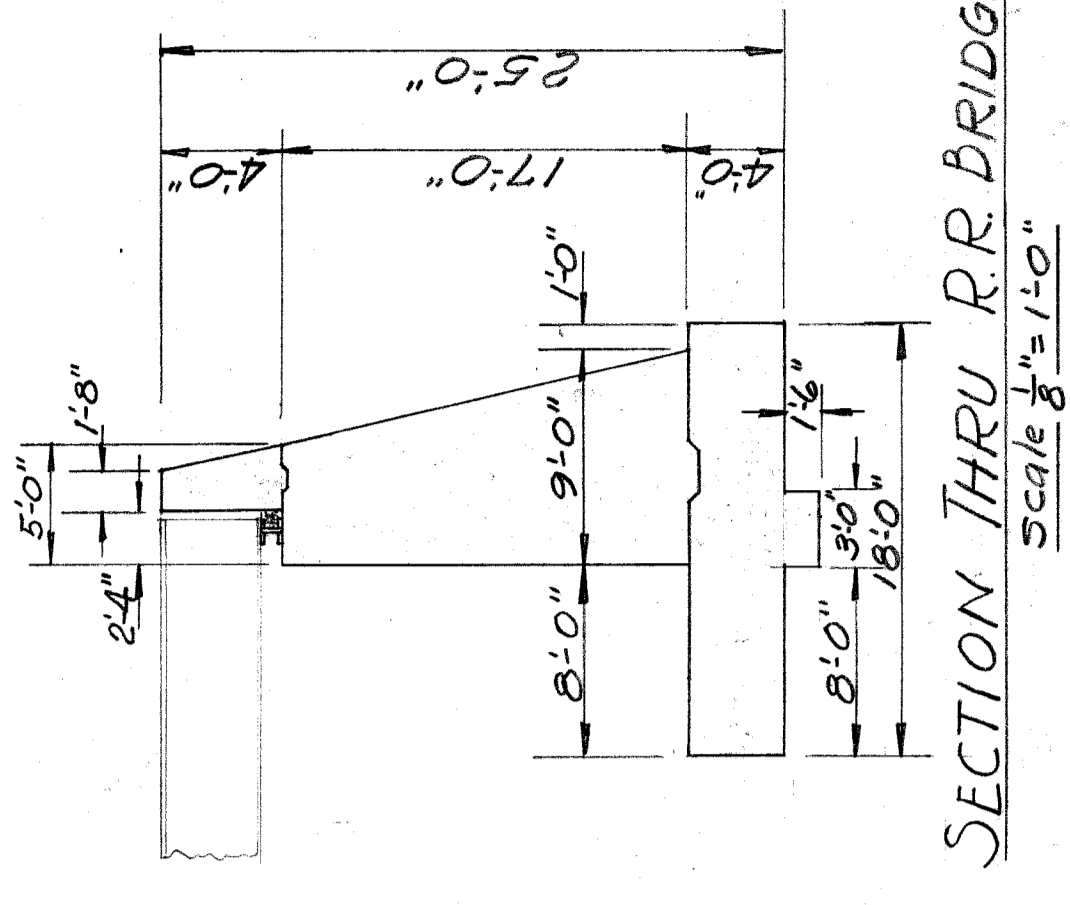
NOTED BY	DESCRIPTION	DATE	APPROVED:	DESIGNED BY A. Berarducci	DRAWN BY P.H. Williams	TRACED BY	CHECKED BY A.B.W.	CITY ENGINEER	CITY OF DETROIT DEPARTMENT OF PUBLIC WORKS CITY ENGINEERS OFFICE BUREAU OF DESIGN	GRADE SEPARATION	GREEN AVE. AND WABASH & PERE MARQUETTE R.R. (UNION BELT OF DETROIT) AND GREEN AVE. AND M.C.R.R. SPUR (N.Y.C. R.R.)	SHEET 2 OF 3 SHEETS
										PRELIMINARY PLAN GENERAL PLAN & PROFILE	SCALE AS NOTED	JOB No. 111
									DRAWING No. X-721			
									DATE Sept. 14, 1945			

Draw. #1 GS-RR-64 C-9

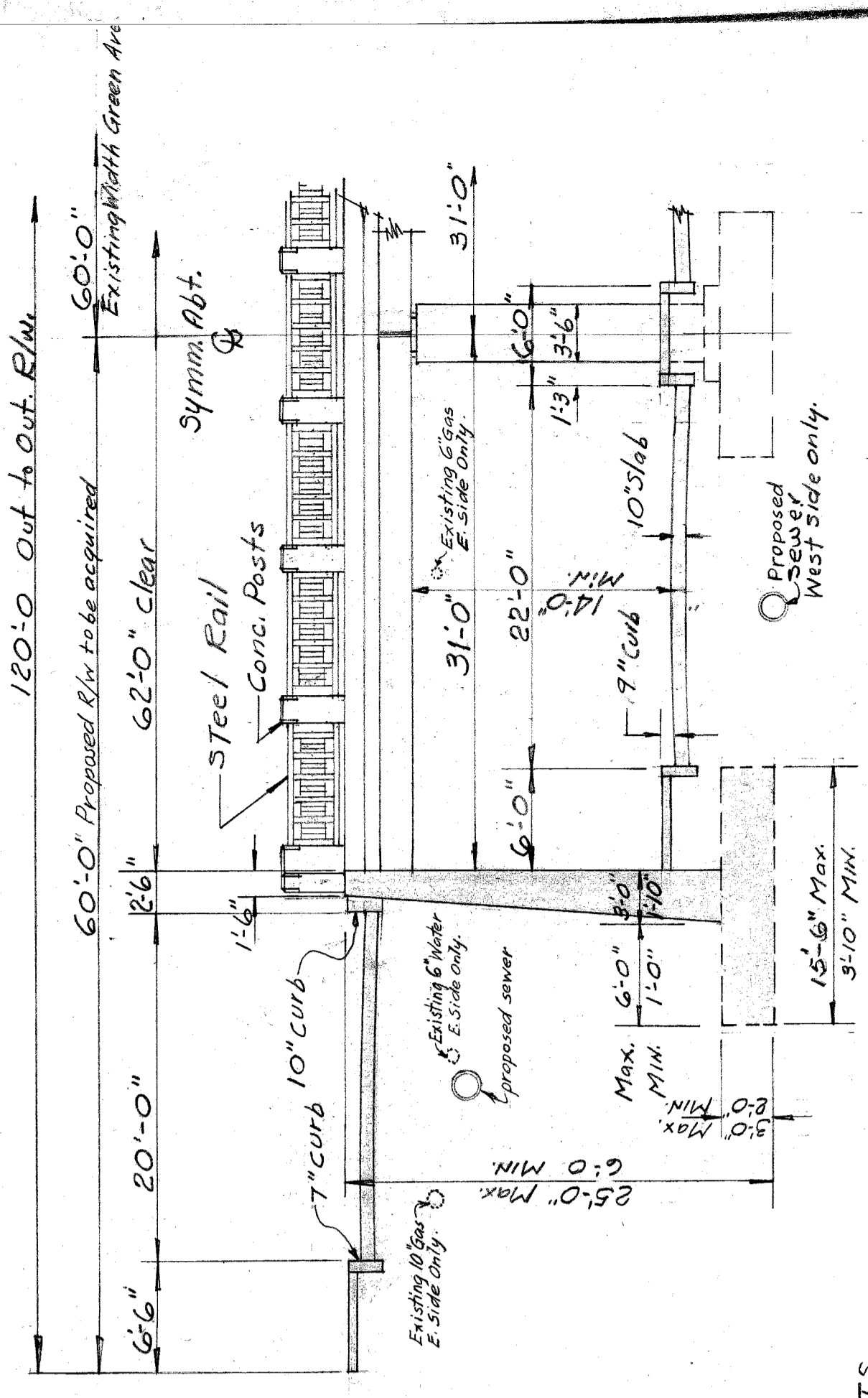
28P-5-1745
 28P-5-16-45
 28P-5-14-45



GENERAL PLAN
 Scale 1/4" = 1'-0"

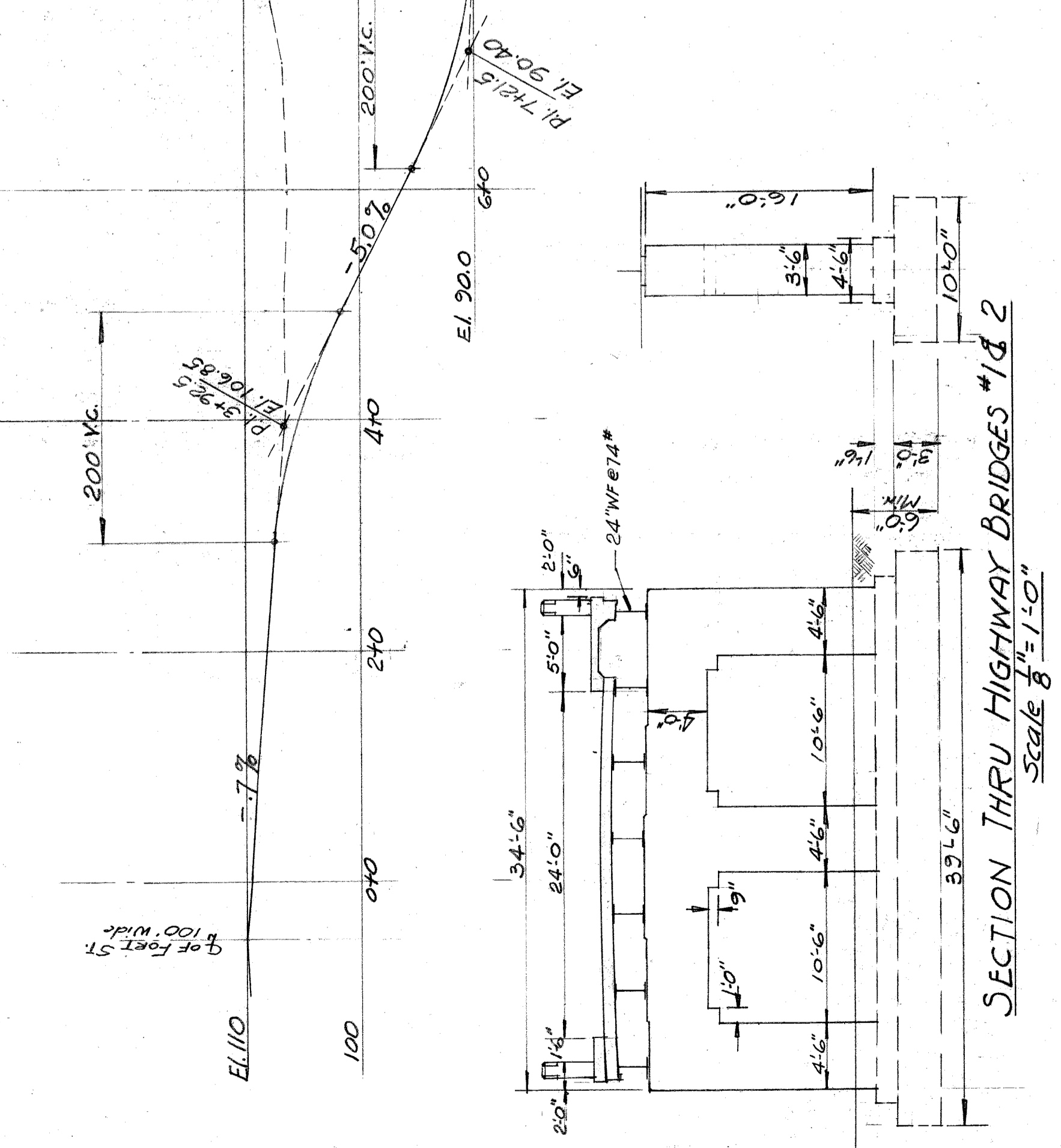


SECTION THRU R.R. BRIDGE ABUT.
 Scale 1/8" = 1'-0"

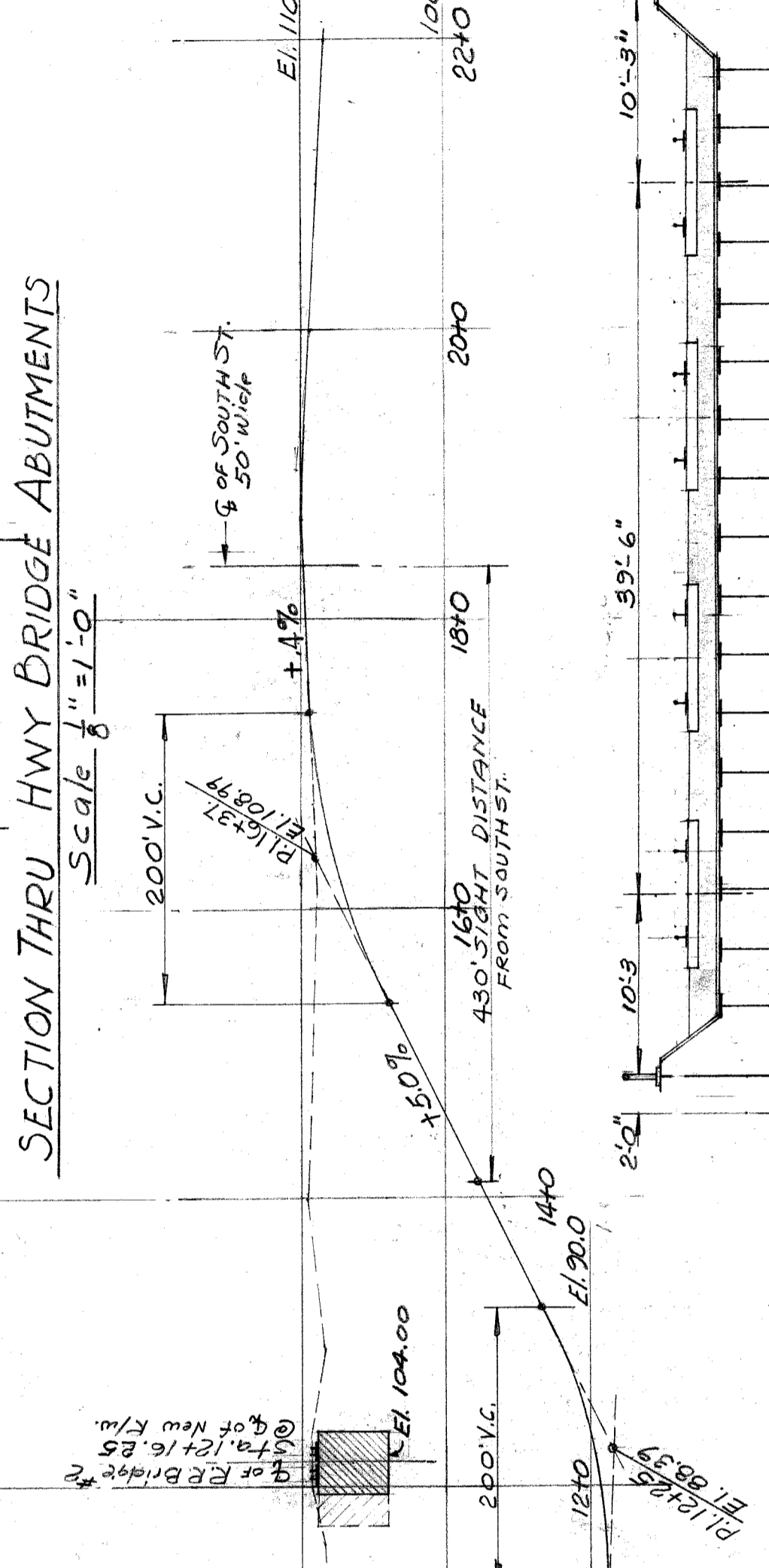


SECTION THRU HWY BRIDGE ABUTMENTS
 Scale 1/8" = 1'-0"

SECTION THRU R.R. BRIDGE #2
 Scale 1/8" = 1'-0"



SECTION THRU HIGHWAY BRIDGES #1 & 2
 Scale 1/8" = 1'-0"



PROFILE
 GREEN AVE.
 Scale Horiz 1" = 100'
 Vert 1" = 10'

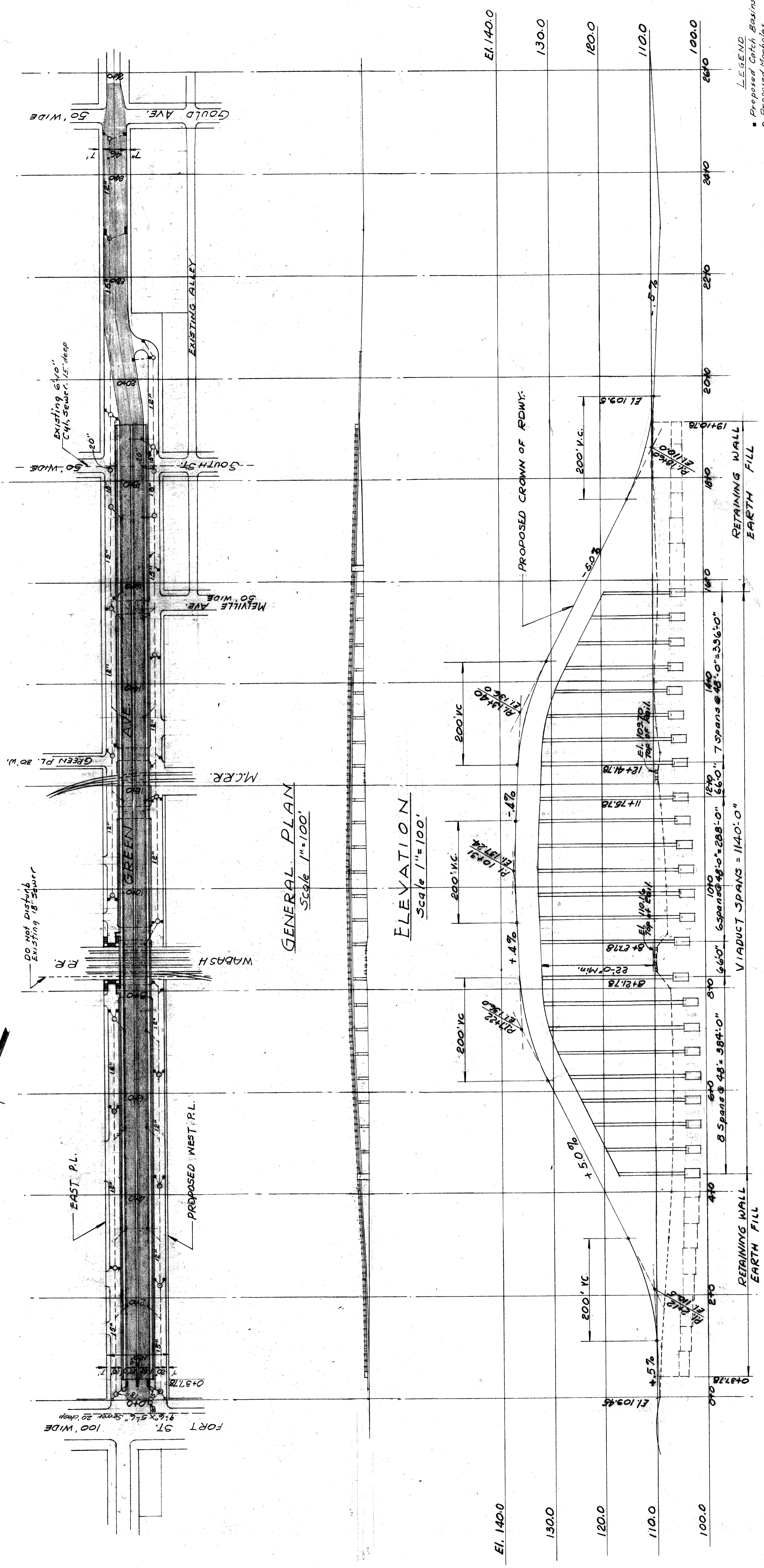
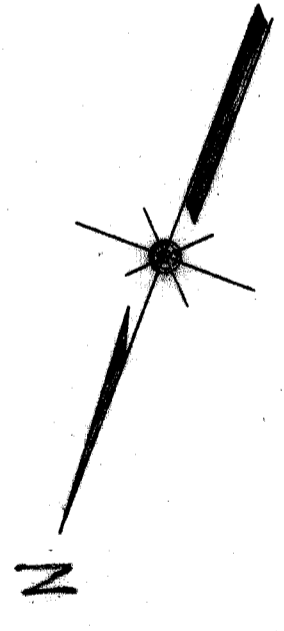
SECTION A-A
 Scale 1/8" = 1'-0"

- LEGEND
- Proposed Earth Basins
 - Proposed Manholes
- DESCRIPTION OF PROPOSED PROJECT
- Re-alignment of Green Ave. between Fort St. and South St. 30'-0" Offset. Max. Max. Right of Way 110'.
 - Vehicle Underpass - Four (4) 15'0" Lanes with 6'-0" Center Bunch, Approaches between Retaining Walls R.R. Bridge - Wabash R.R. One (1) 27'0" R.R. Bridge - M.C.R.R. Two (2) Highway Bridges 24'-0" Center to Center.
 - Raw Acquisition, West Side
 - Drainage System with Pumping Station

Prepared by
John J. Kelly

DESIGNED BY A. B. Forducci P. Williams	APPROVED	CITY OF DETROIT DEPARTMENT OF PUBLIC WORKS CITY ENGINEERS OFFICE BUREAU OF DESIGN	GRADE SEPARATION GREEN AVE., UNDER WABASH & M.C.R.R. TRACKS PRELIMINARY PLAN GENERAL PLAN, PROFILE & SECTIONS SCALE AS NOTED	SHEET 2 OF 2 SHEETS
DRAWN BY P. Williams	JOB NO. III			DRWG. NO. X-72
CHECKED BY A.B.W.	DATE July 26, 1945			
SCALE AS NOTED				GS-RR-64 C-6

2.BP.5-3-45
2.BP.6-11-45



GENERAL PLAN
Scale 1"=100'

ELEVATION
Scale 1"=100'

PROFILE
GREEN AVENUE
Scale Horiz. 1"=100'
Vert. 1"=10'

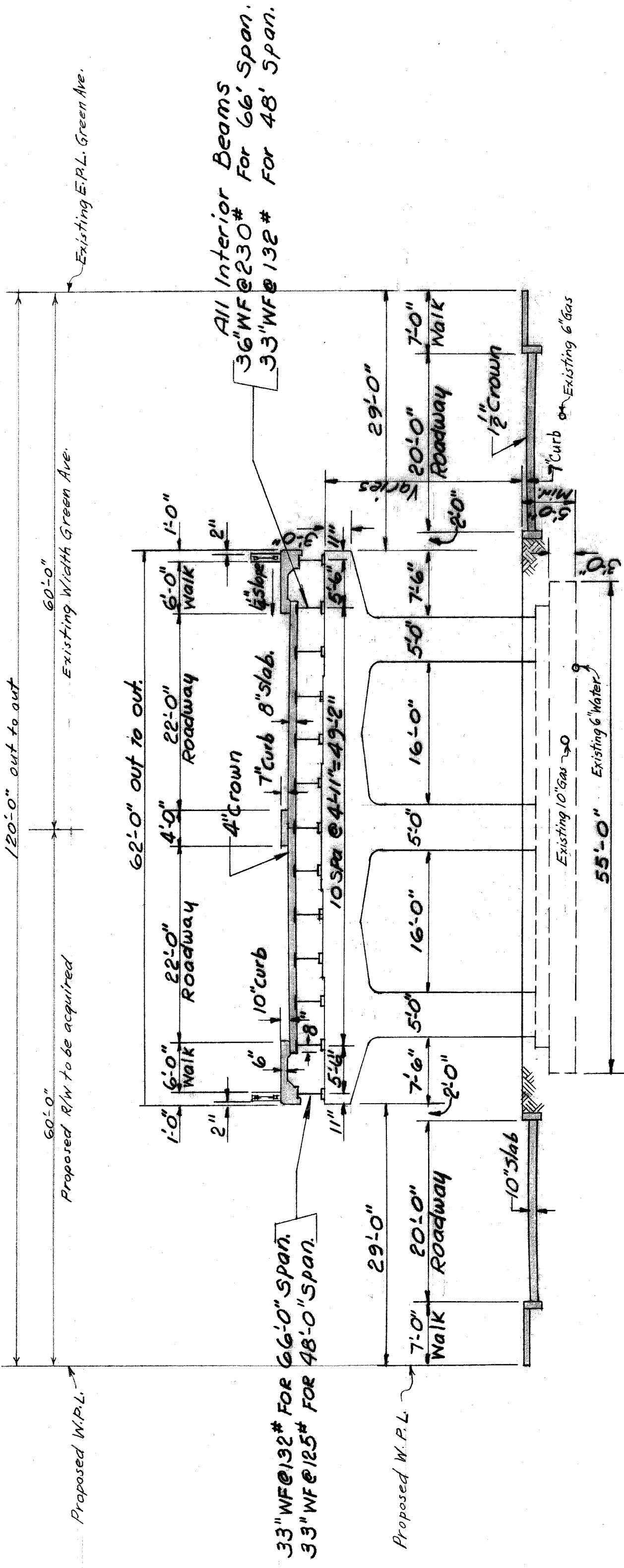
- LEGEND
- Proposed Catch Basins
 - Proposed Manholes
- DESCRIPTION OF PROPOSED PROJECT
1. Re-alignment of Green Ave between Fort St. and Gould Ave 30'-0" offset West from existing and South Side - Four (4) 11'-0" lanes with 4'-0" center divider, Approaches on fill between Retaining Walls, and Open Viaduct on West Side.
 2. Retaining Walls, and Open Viaduct on West Side.
 3. ROW Acquisition - West Side
 4. Drainage System.

Suburban
For Review

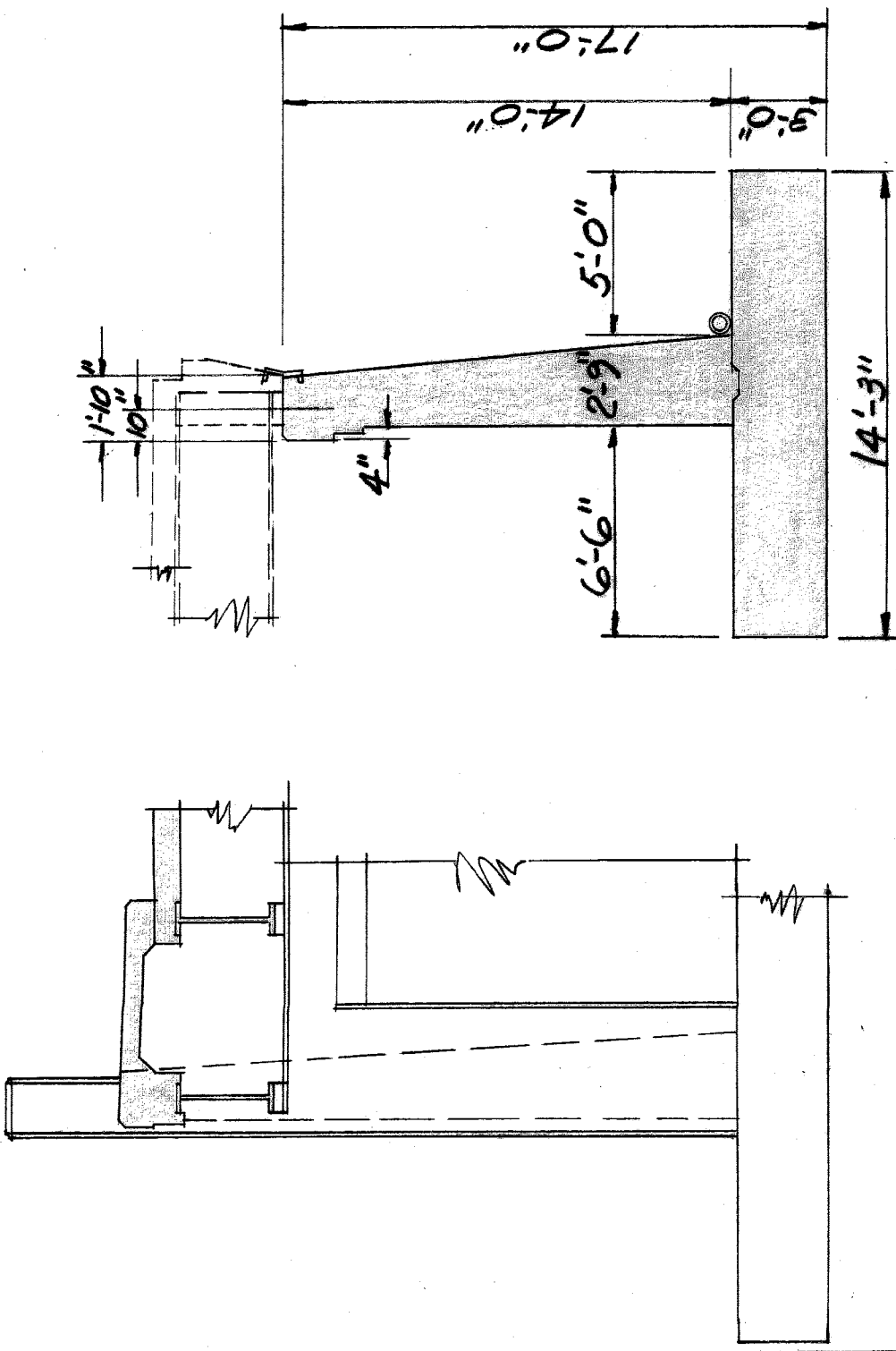
SHEET 2 OF 3 SHEETS		JOB NO. 111		DRAWING NO. X-7		DATE July 26	
CITY OF DETROIT DEPARTMENT OF PUBLIC WORKS CITY ENGINEERS OFFICE BUREAU OF DESIGN				GRADE SEPARATION GREEN AVENUE, WABASH & M.C.R.R. PRELIMINARY PLAN GENERAL PLAN, ELEVATION & PROFILE SCHEME #3			
DESIGNER A. Williams		DRAWN BY P. Williams		CHECKED BY A.B.N.		SCALE AS NOTED	
REVISIONS		DESCRIPTION		DATE		DRAWN	

Draw. #1 GS-RR-64 C-7

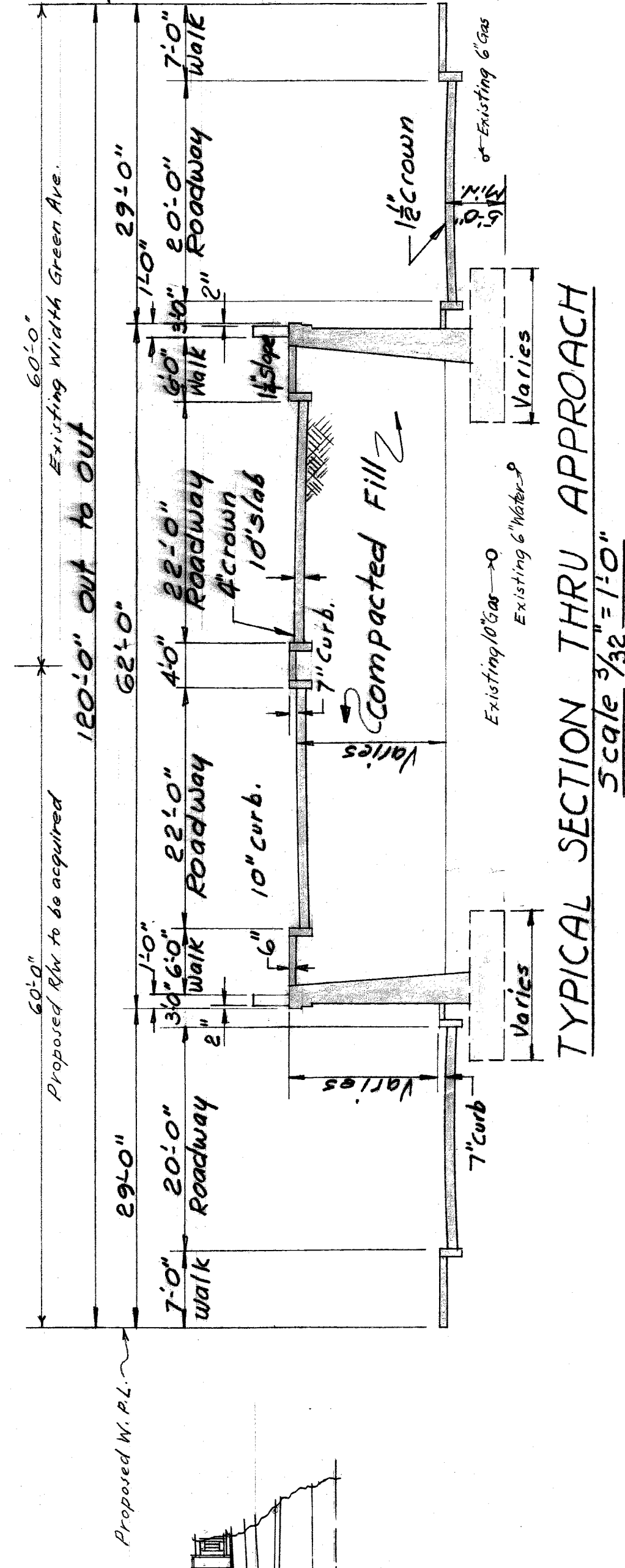
28P-4-16-45
28P-5-3-45
28P-6-11-45



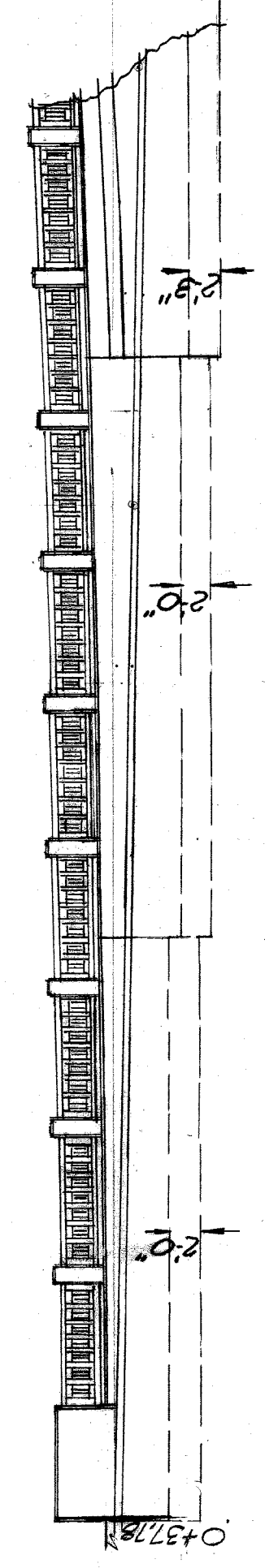
SECTION THRU ABUTMENT
Scale $\frac{3}{16}'' = 1'-0''$



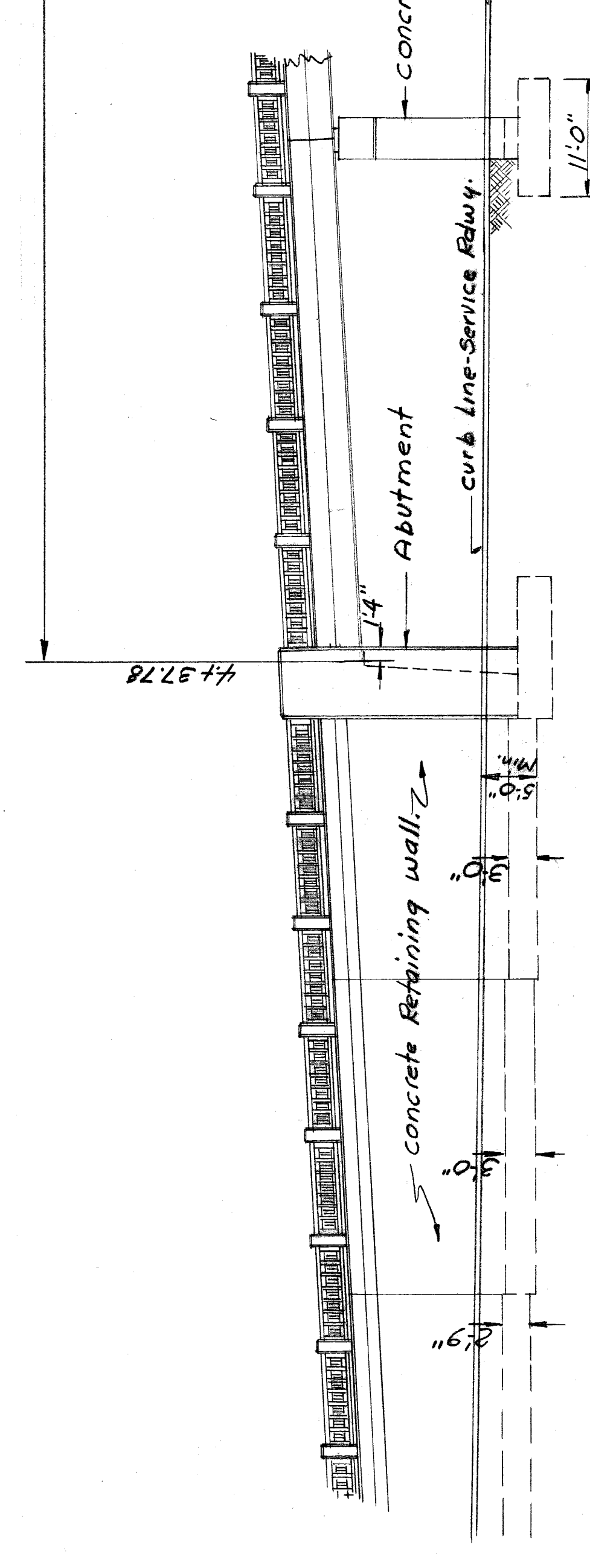
TYPICAL SECTION THRU BRIDGE
Scale $\frac{3}{32}'' = 1'-0''$



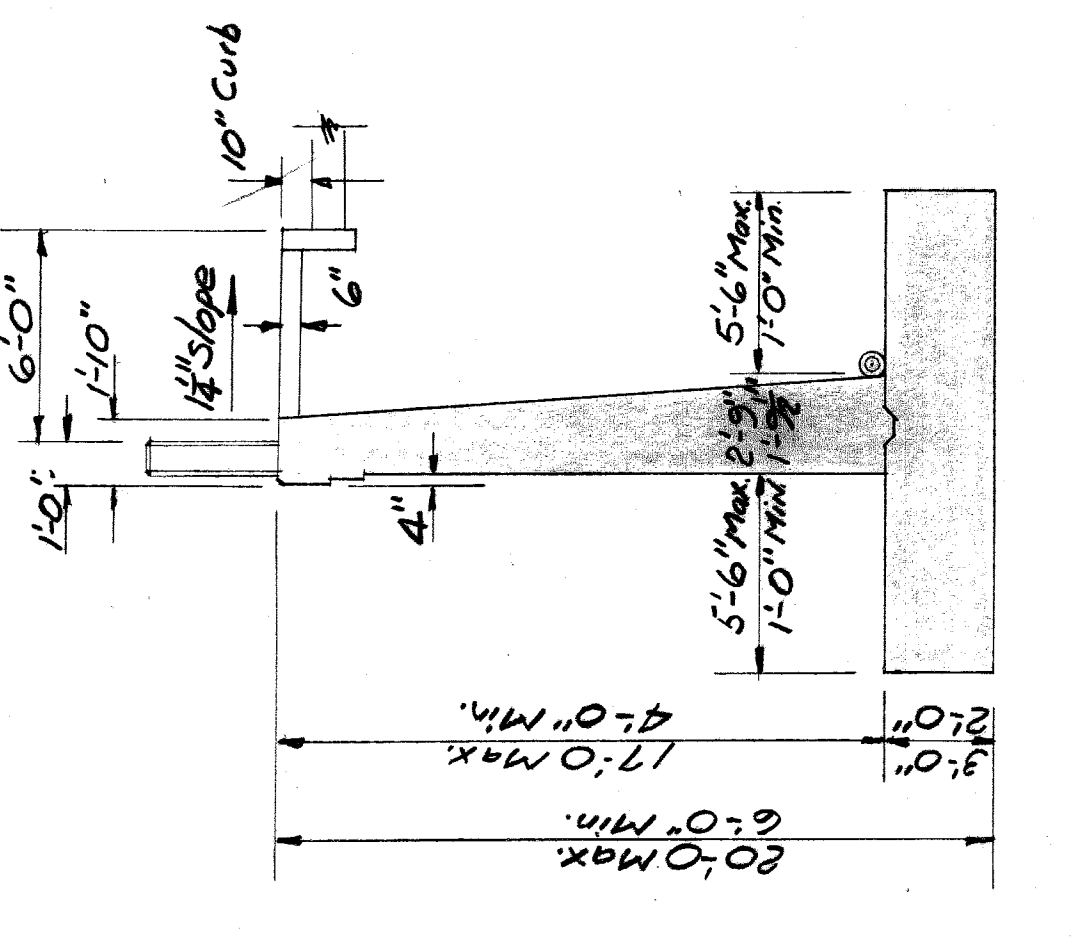
TYPICAL SECTION THRU APPROACH
Scale $\frac{3}{32}'' = 1'-0''$



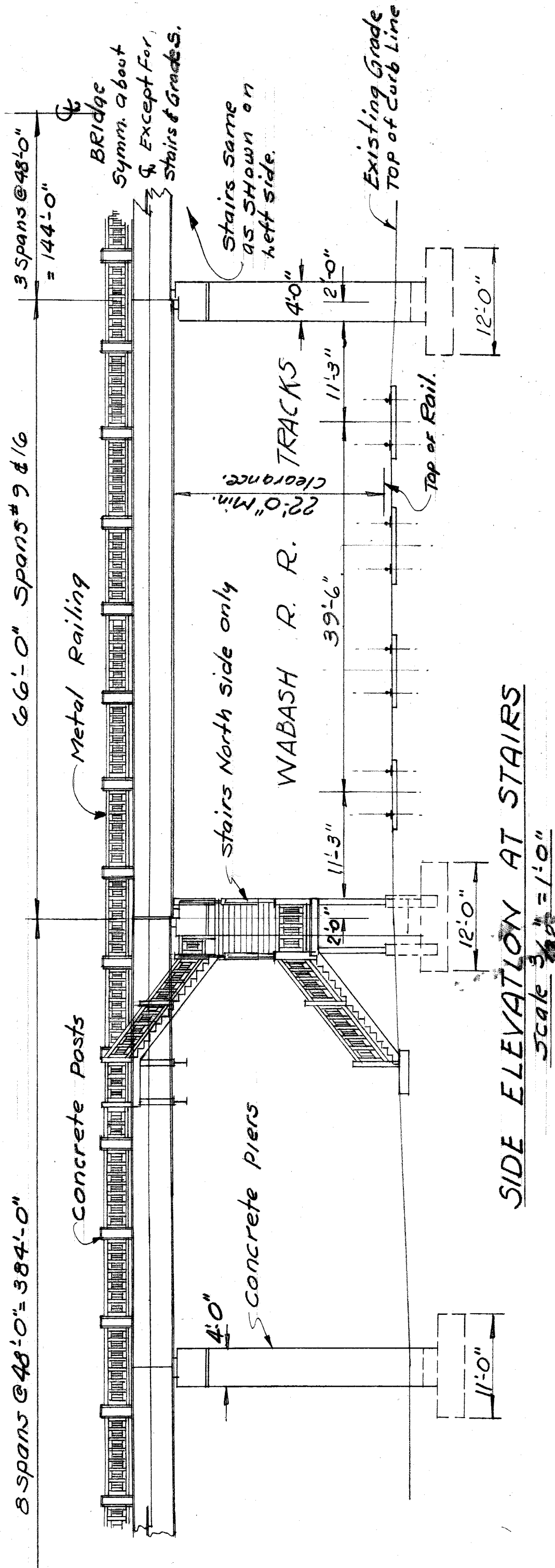
SIDE ELEVATION AT NORTH ABUTMENT
Scale $\frac{3}{32}'' = 1'-0''$



TYPICAL SECTION THRU RETAINING WALL
Scale $\frac{3}{16}'' = 1'-0''$



See office for details



SIDE ELEVATION AT STAIRS
Scale $\frac{3}{32}'' = 1'-0''$

Note: Existing Utilities interfering with construction to be reworked as required.

DESIGNED BY A. Berarducci P. Williams	CITY OF DETROIT DEPARTMENT OF PUBLIC WORKS CITY ENGINEERS OFFICE BUREAU OF DESIGN	GRADE SEPARATION GREEN AVE. - WABASH & M.C.R.R.	SHEET 3 OF 3 SHEETS
DRAWN BY P. Williams		PRELIMINARY PLAN	JOB No. III
TRACED BY		ELEVATIONS AND TYPICAL SECTIONS	DRWG No. K-725
CHECKED BY A.B.W.		SCALE AS NOTED	DATE July 26, 1945
			GS-RR-64 C-8

