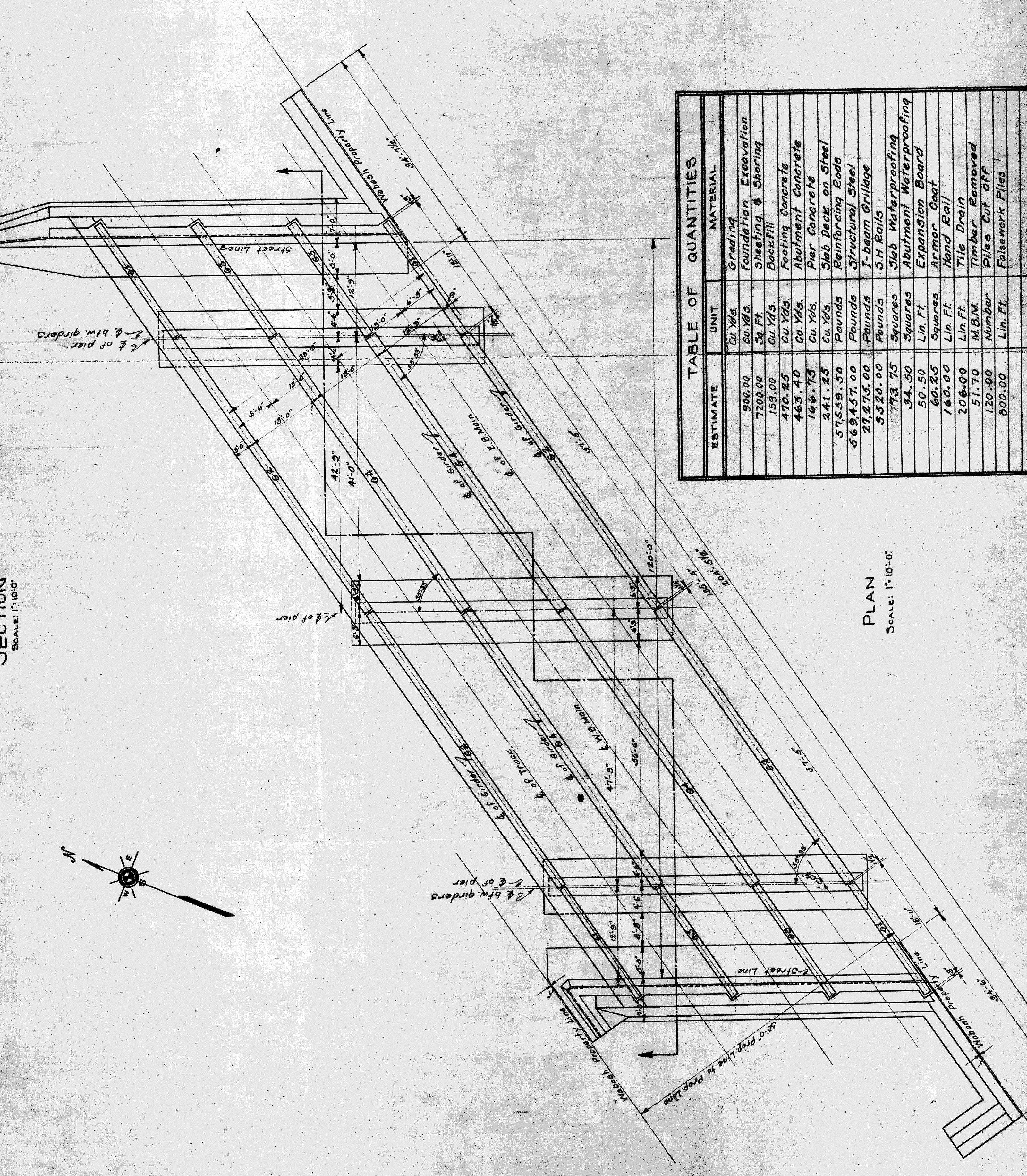
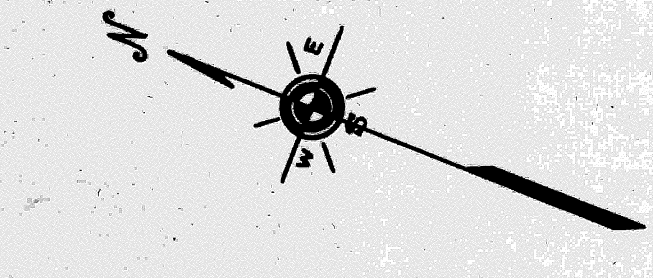


SECTION
SCALE: 1"=10'-0"

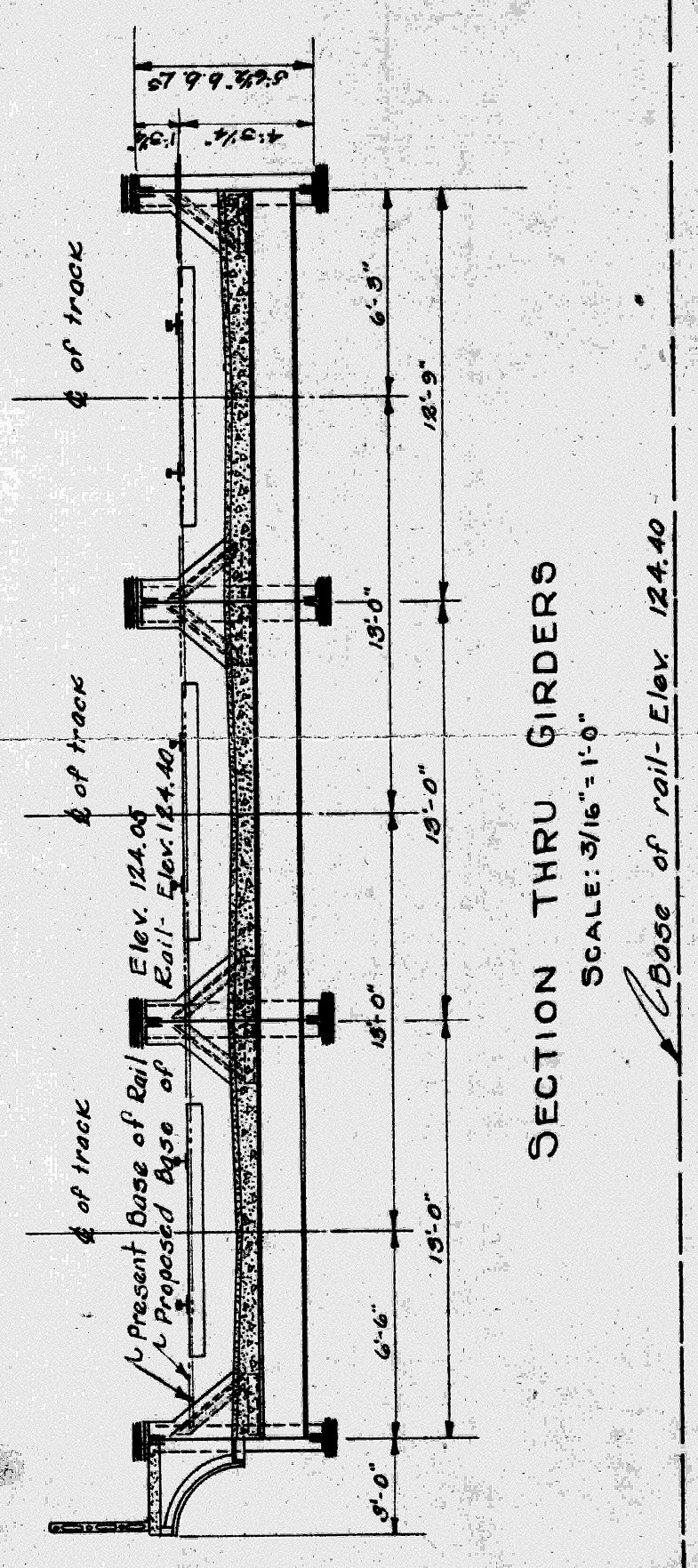


PLAN
SCALE: 1"=10'-0"

ESTIMATE	UNIT	MATERIAL
900.00	Cu. Yds.	Grading
7200.00	Sq. Ft.	Foundation Excavation
159.00	Cu. Yds.	Sheeting & Shoring
470.85	Cu. Yds.	Backfill
465.40	Cu. Yds.	Footing Concrete
146.73	Cu. Yds.	Abutment Concrete
241.25	Cu. Yds.	Pier Concrete
575.59.00	Pounds	Slab Deck on Steel
569,457.00	Pounds	Reinforcing Steel
27,270.00	Pounds	Structural Steel
9320.00	Pounds	I-beam Grillage
73.75	Squares	S.H. Rails
94.50	Squares	Slab Waterproofing
50.50	Sq. Ft.	Abutment Waterproofing
60.25	Sq. Ft.	Expansion Board
160.00	Sq. Ft.	Armor Coat
206.00	Lin. Ft.	Hand Rail
51.70	Lin. Ft.	Tile Drain
120.00	M.B.M.	Timber Removed
800.00	Number	Pile Cut Off
	Lin. Ft.	Falsework Piles

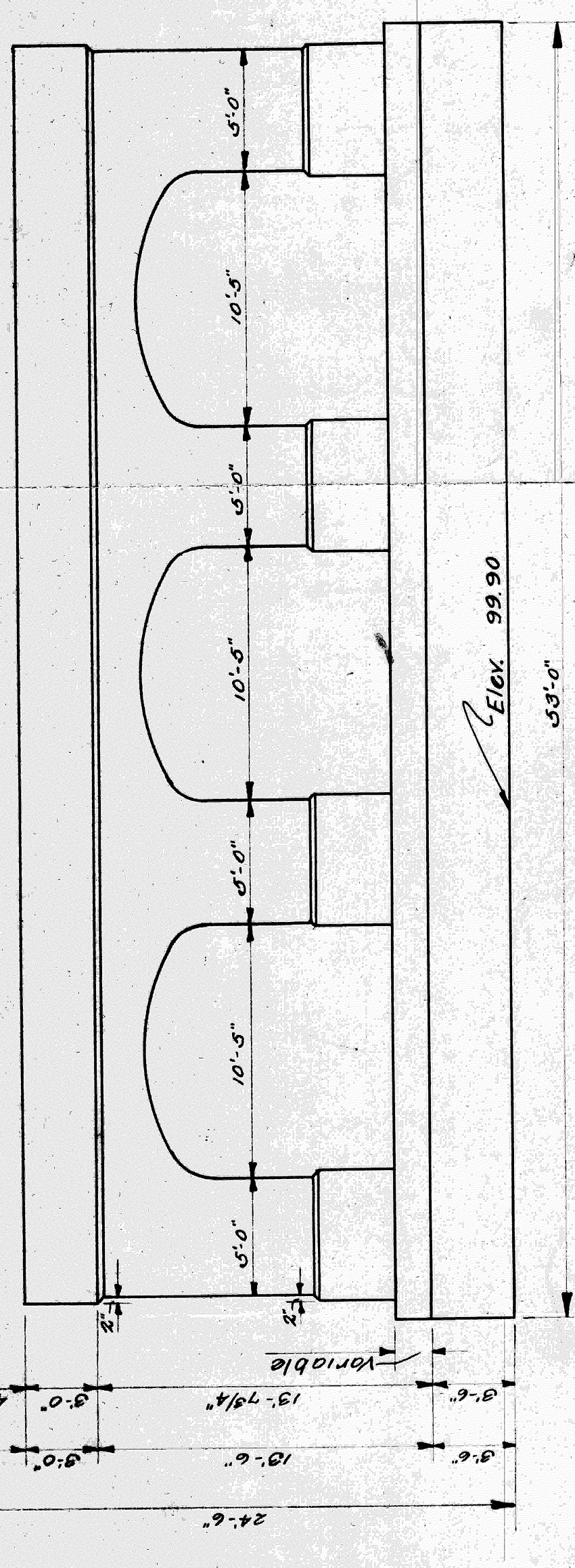
LIST OF DRAWINGS

DESCRIPTION	SH. NO.
General Plans	1
Steel Design	2
Steel Design	2a
Center Pier	3
Curb Pier	4
North Abutment	5
South Abutment	6
Slab Details	7
Situation Plan	8

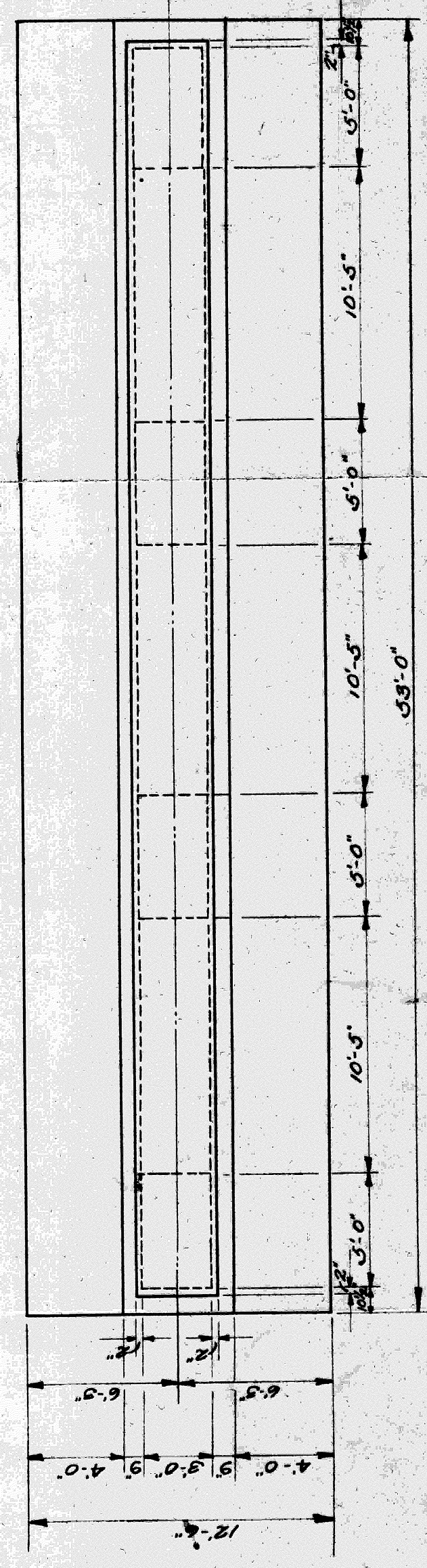


SECTION THRU GIRDERS
SCALE: 3/16"=1'-0"

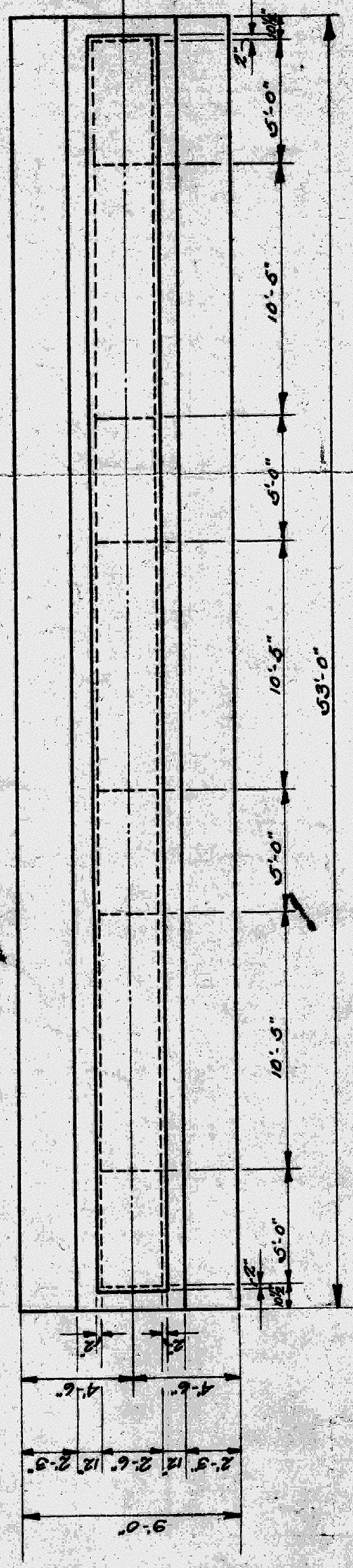
Base of rail: Elev. 124.40



ELEVATION - ALL PIERS
SCALE: 3/16"=1'-0"



PLAN OF CENTER PIER



PLAN OF CURB PIER
SCALE: 3/16"=1'-0"

WABASH RAILWAY
DETROIT TERMINAL DIVISION
DETROIT MICH.
WAYNE COUNTY
LIVERNOIS AVE
GENERAL PLAN
OFFICE OF THE CHIEF ENGINEER
SCALE - As shown
March 23, 1927

APPROVED FOR THE WABASH RAILWAY
CHIEF ENGINEER
APPROVED FOR THE CITY OF DETROIT