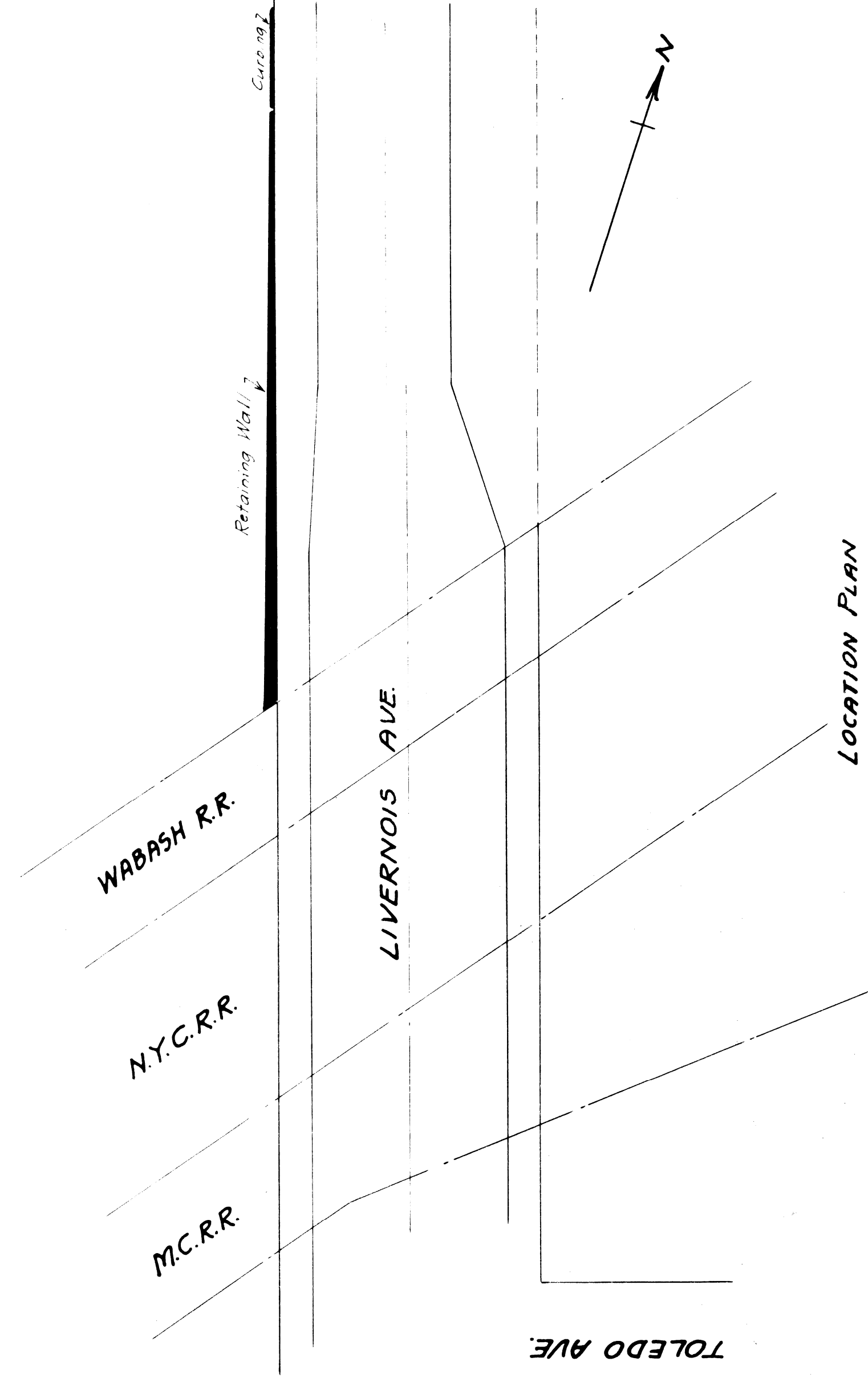
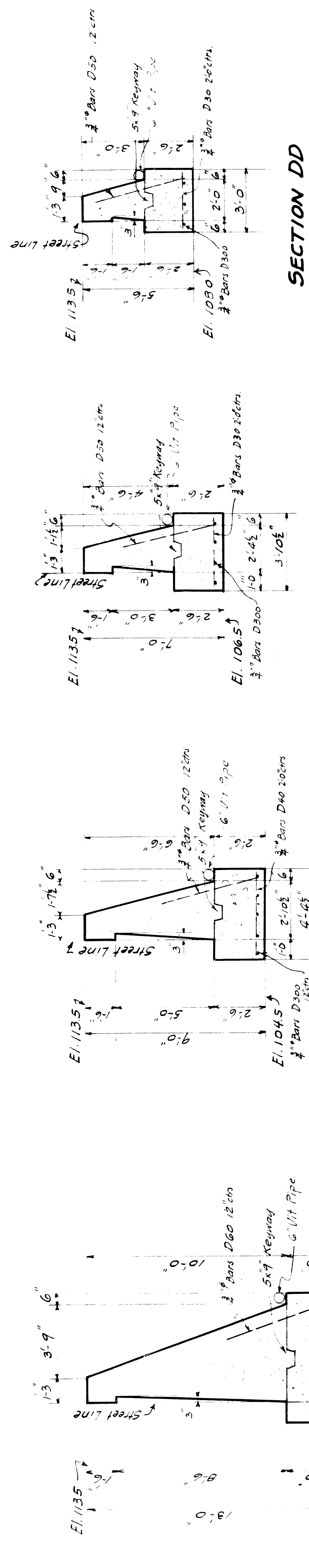


PLAN OF WALL  
Scale 1/4" = 1'-0"

ELEVATION OF WALL  
Scale 1/4" = 1'-0"



LOCATION PLAN



SECTION AA

SECTION BB

SECTION CC

SECTION DD

SECTION EE

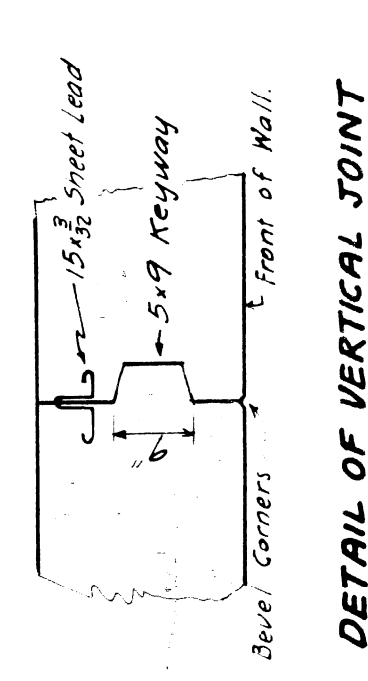
Mark	No	Size	Length	Location
D300	56	3/4"	30'-0"	Footing longitudinal cut
D60	110	3/8"	16'-0"	Dowels
D50	170	3/8"	5'-0"	Footing transverse
D60	40	3/8"	5'-0"	Footing transverse
D56	15	3/8"	5'-0"	
D46	15	3/8"	4'-6"	
D40	15	3/8"	4'-0"	
D30	55	3/8"	3'-0"	

Quantities

Concrete -	139 cu yds
Above Footing	177 "
Curbing	8 "
Total	323 cu yds
5' Ultrified Tile	240 lin ft
Reinforcing Steel	5700#

**NOTES**

Concrete: Shall be composed of 1 part cement, 2 1/2 parts sand, and 4 1/2 parts pebbles. Bevel all exposed corners 1/4". Top of wall shall have a sidewalk finish. There shall be no horizontal joints, except at top of footing. Vertical joints to be spaced about 30' apart. Exposed surfaces shall be rubbed as soon as the forms are removed. No cement grout shall be used in rubbing surfaces. Reinforcing steel: All bars shall be developed. They shall be securely wired together at each intersection and splice. Splices shall lap 40 diameters. Waterproofing: A coat of mastic shall be painted with 2 coats of asphaltic waterproofing. Horizontal drains to be backfilled with 4" of gravel. Drain rods connected to city sewer system by clean-out.



DETAIL OF VERTICAL JOINT

**M.C.R.R. - TOLEDO DIV.**  
 BRIDGE 337 LIVERNOIS AVE. SUBWAY  
 RETAINING WALL NORTH OF WABASH R.R.  
 ALONG WEST SIDE OF STREET.

SCALE: 1/4" = 1 FOOT  
 DRAWN BY: J. N. S. E. 8-28-1927  
 CHECKED BY: J. N. S. E. 8-28-1927  
 APPROVED: \_\_\_\_\_  
 REVISED: \_\_\_\_\_  
 SHEET 115 OF \_\_\_\_\_

File XU-32-31

AUG 28 1927