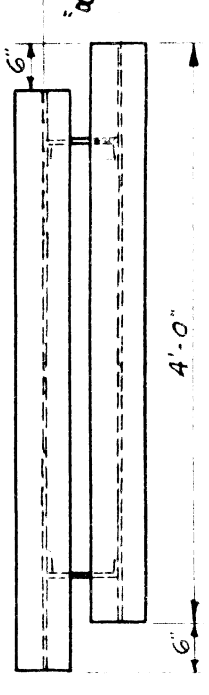
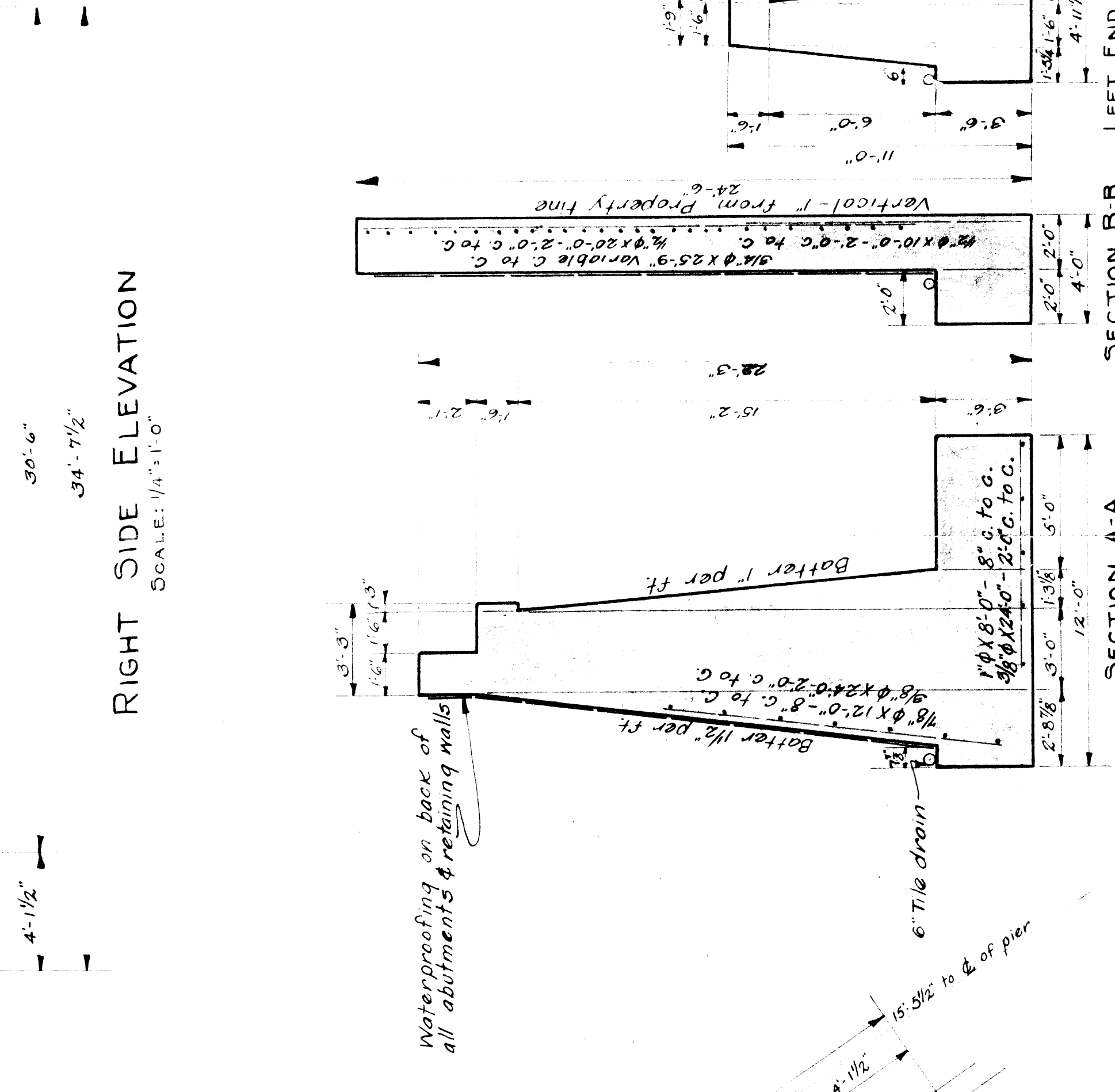
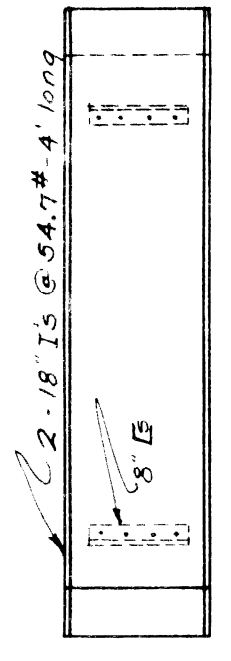


FRONT ELEVATION
SCALE: 1/4" = 1'-0"

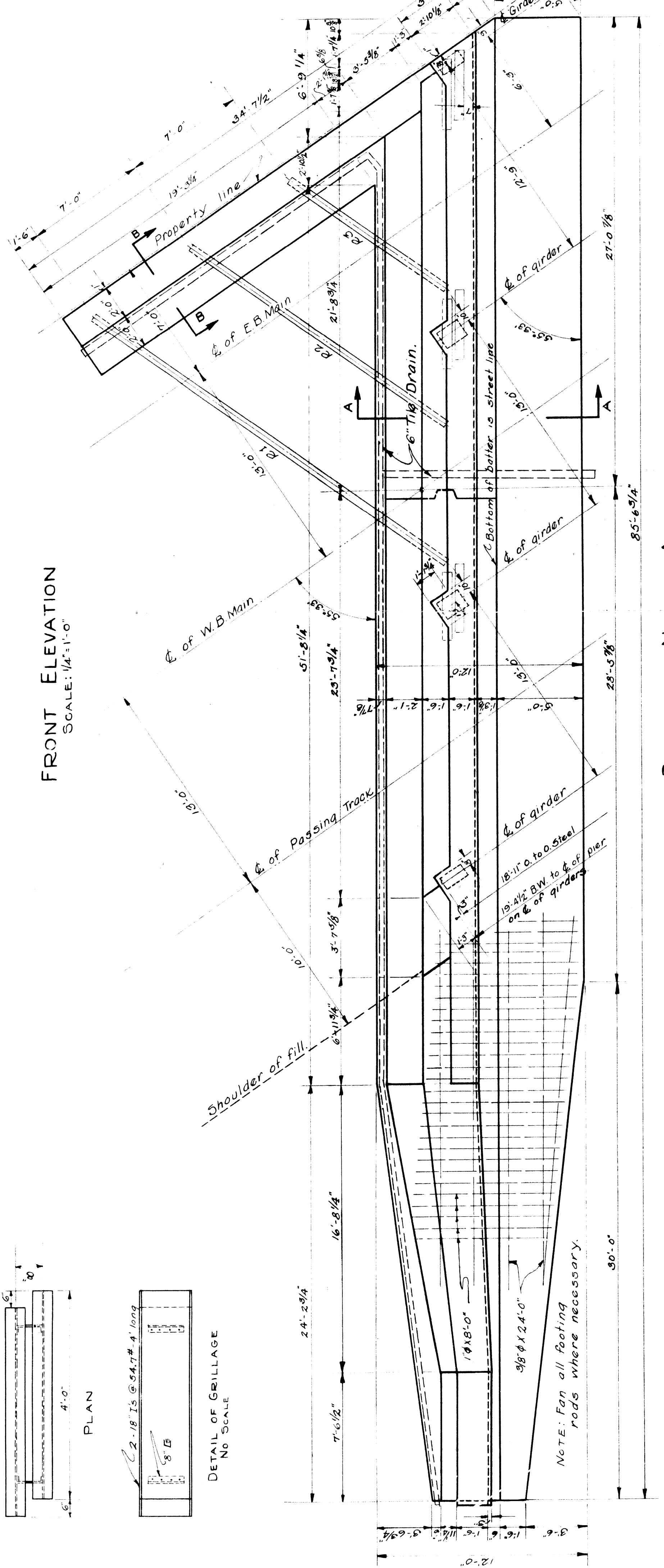
RIGHT SIDE ELEVATION
SCALE: 1/4" = 1'-0"



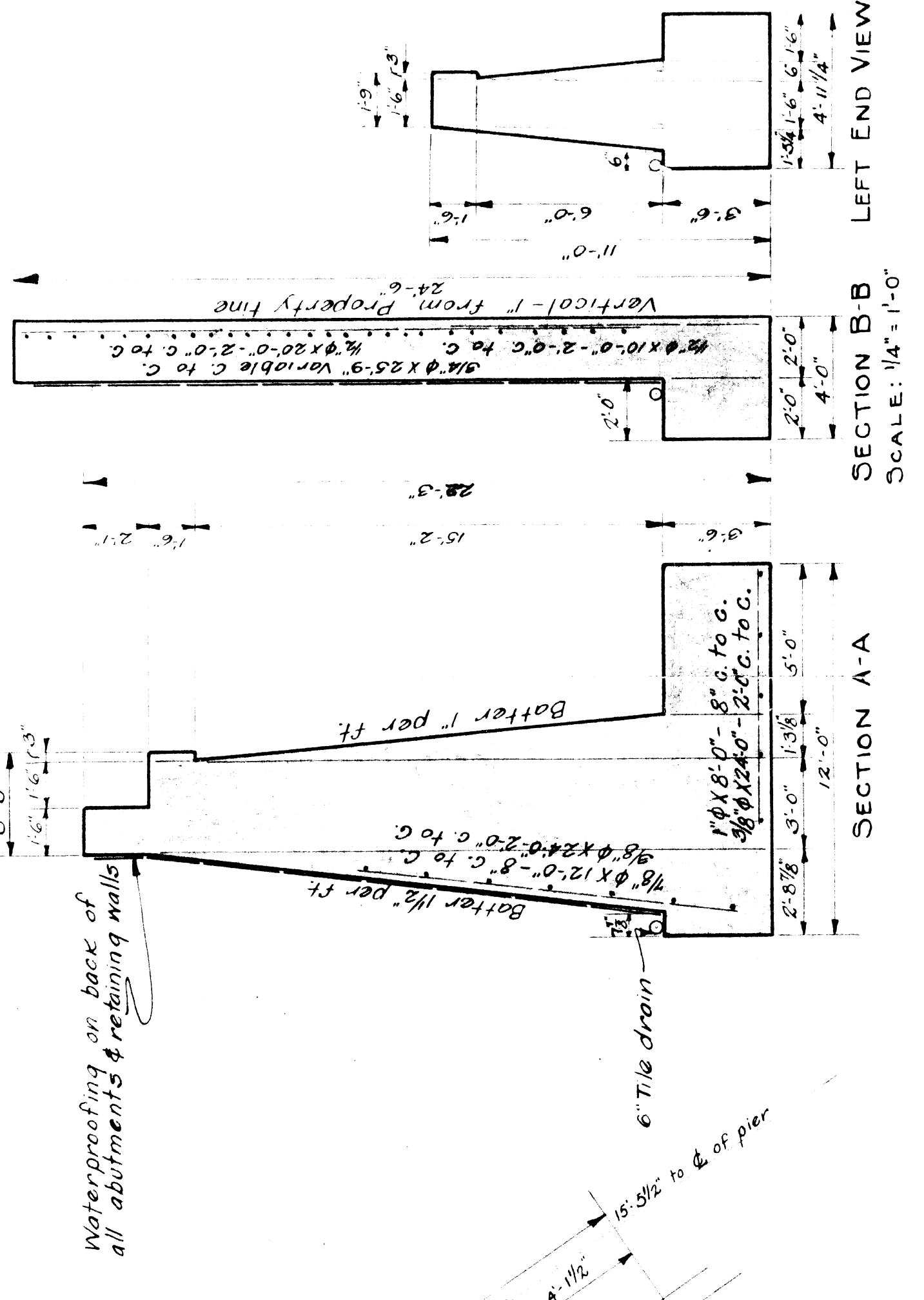
PLAN



DETAIL OF GRILLAGE
NO SCALE



PLAN OF NORTH ABUTMENT
SCALE: 1/4" = 1'-0"



SECTION A-A
SCALE: 1/4" = 1'-0"

SECTION B-B
SCALE: 1/4" = 1'-0"

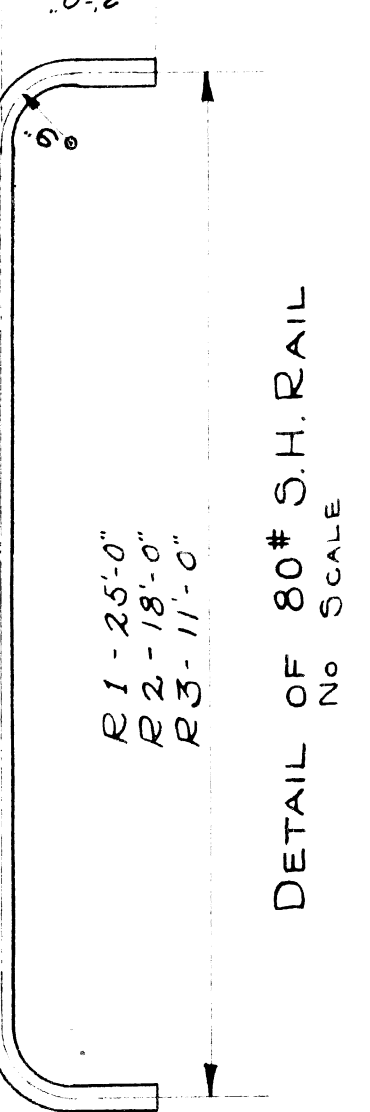
LEFT END VIEW

TABLE OF REINFORCING RODS

NO.	SIZE	LENGTH	C TO C	LOCATION	REMARKS
21	3/8"	24'-0"	2'-0"	Abutment	Longitudinal
108	7/8"	12'-0"	8"	"	Vertical
15	3/8"	24'-0"	2'-0"	Footings	Longitudinal
108	1"	8'-0"	8"	"	Lateral
4	3/4"	25'-9"	10"	Wing	Longitudinal
48	3/4"	4'-0"	5"	Abut. & Wing	At rail hooks

TABLE OF QUANTITIES

UNIT	ESTIMATE
Abutment Concrete	2,460.00 cu Yds
Footings Concrete	130.57 cu Yds
Reinforcing Rods	6849 Pounds
Waterproofing	1750 Sqaures
80# SH Rails	3520 Pounds
Grillage	1852 Pounds



DETAIL OF 80# SH. RAIL
NO SCALE

WABASH RAILWAY
DETROIT TERMINAL DIVISION
DETROIT MICH.
WAYNE COUNTY
LIVERNOIS AVE
NORTH ABUTMENT

OFFICE OF THE CHIEF ENGINEER
SCALE: 1/4" = 1'-0" March 22, 1917

DRAWN BY HOP CHECKED BY A.H.S.
SHEET 5 OF 8
FILE XU 32-16