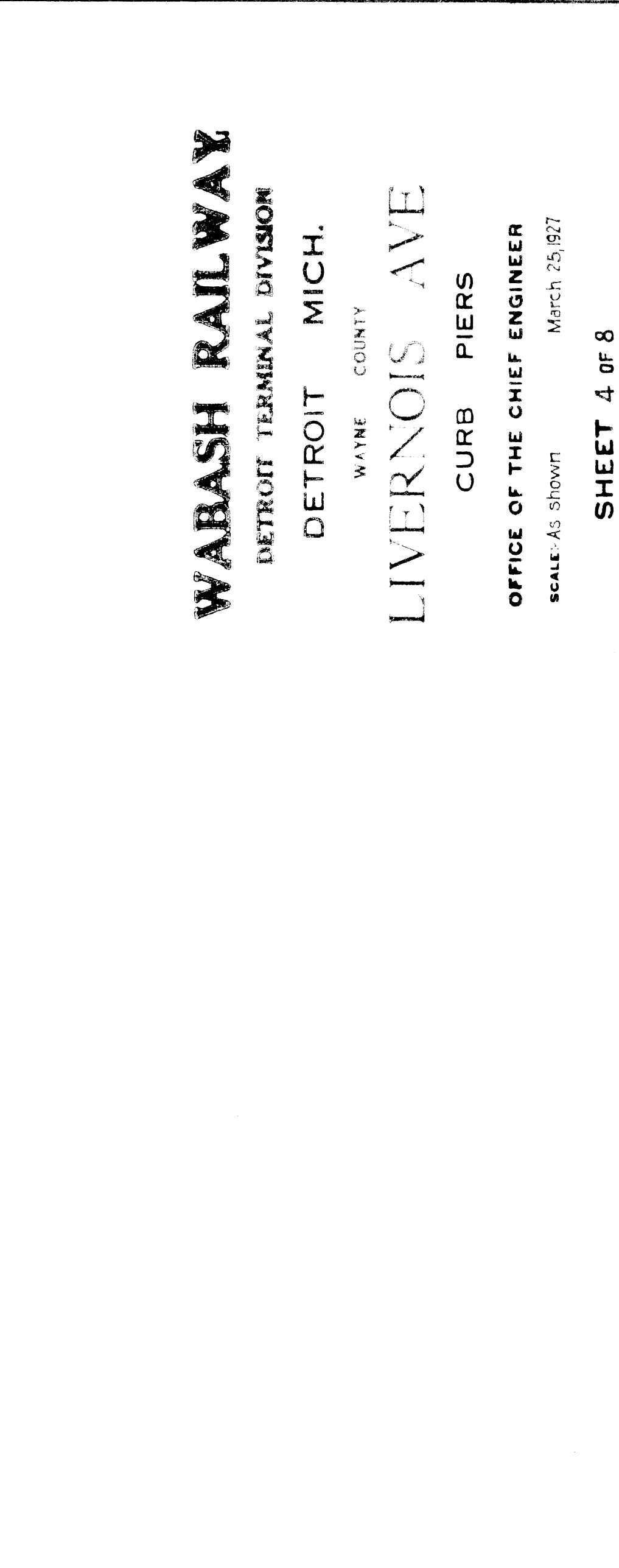
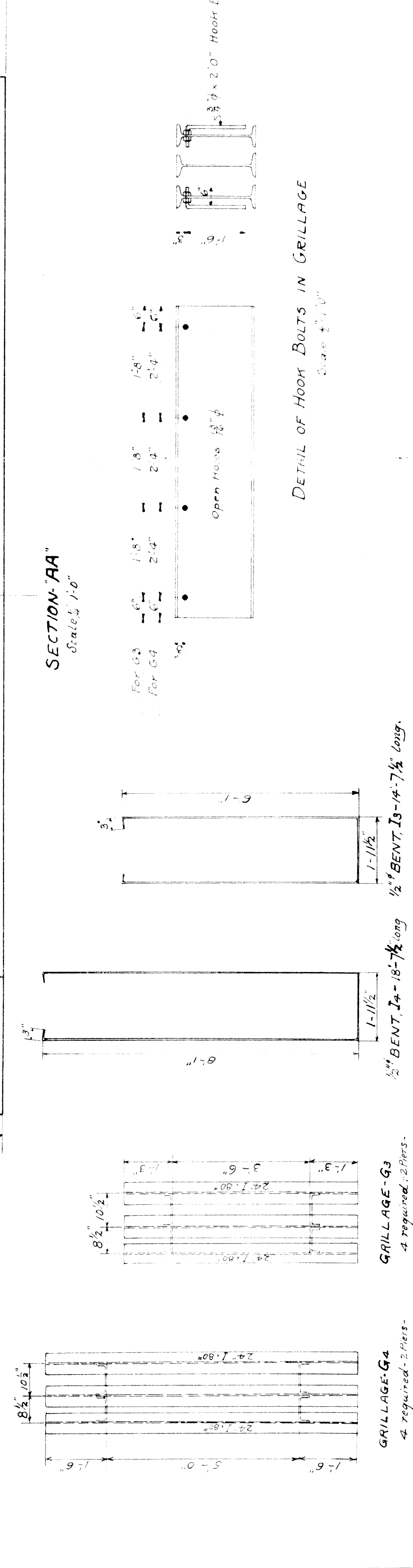
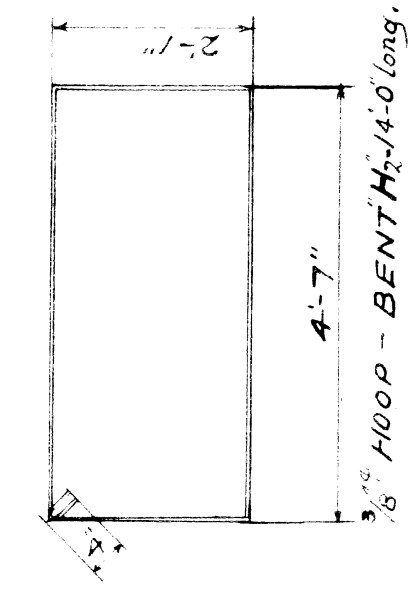


CORRUGATED STEEL ROADS IN ONE PIER.			
NO	LOCATION	LENGTH	SIZE
1	Grillage	14	7 1/2" x 12"
2	Grillage	18	7 1/2" x 12"
3	Top	20	0 3/4" x 10"
4	Top	27	0 3/4" x 10"
5	Top	2	1/2" x 10"
6	Diagonals	10	0 3/4" x 12"
7	Diagonals	12	0 3/4" x 12"
8	Columns	6	0 3/4" x 12"
9	Columns	14	0 3/4" x 12"
10	Bottom	23	0 1" x 14"
11	Bottom	23	0 1" x 14"
12	Bottom	28	0 1/2" x 12"
13	Grillage	7	0 3/4" x 10"

TABLE OF QUANTITIES.		
UNITS	NORTH PIER	SOUTH PIER TOTAL
Feet of Concrete	73.08 c.yds	143.92 c.yds.
Pier Concrete	47.66 c.yds	48.23 c.yds
Reinforcing Steel	5351.27 #	5351.27 #
Grillage	7064.5 #	7064.5 #



WABASH RAILWAY
DETROIT TERMINAL DIVISION
DETROIT MICH.
WAYNE COUNTY
LIVERNOIS AVE
CURB PIERS
OFFICE OF THE CHIEF ENGINEER
SCALE: As SHOWN March 25, 1927
SHEET 4 OF 8
DRAWN BY A.W. TRACED BY A.W. CHECKED BY R.H.S.