

WABASH RAILWAY

DETROIT TERMINAL DIVISION

DETROIT MICH.

WAYNE COUNTY

LIVERNOIS AVE

CENTER PIER

OFFICE OF THE CHIEF ENGINEER

SCALE: 1/4" = 1'-0"

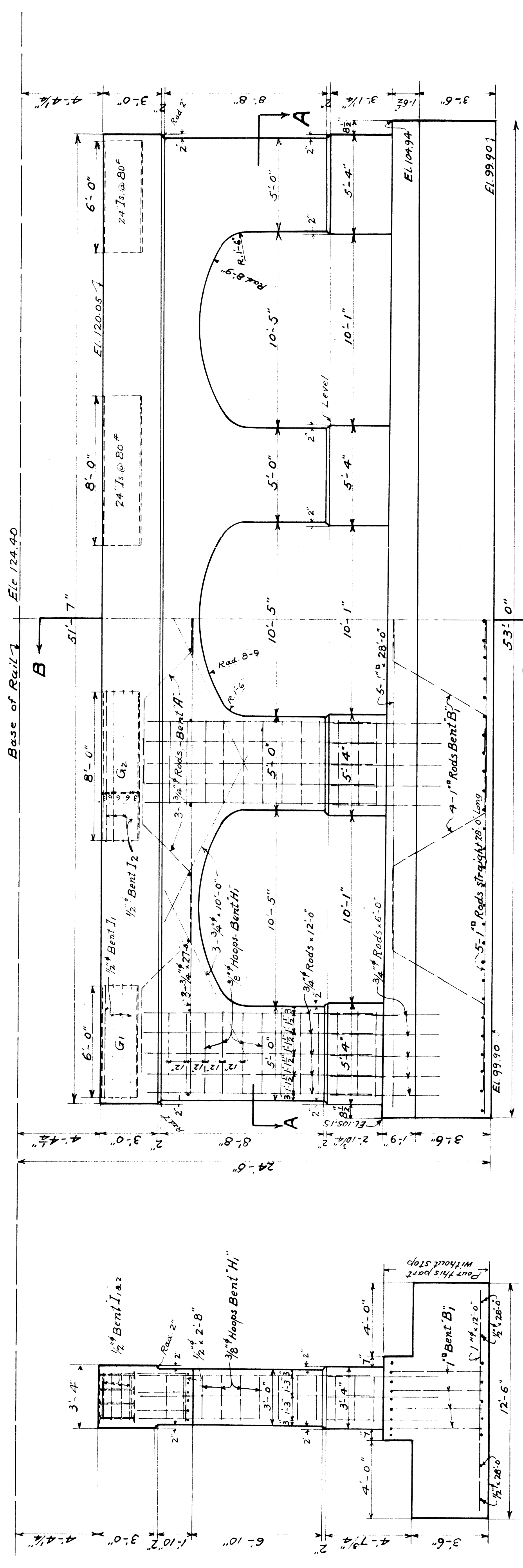
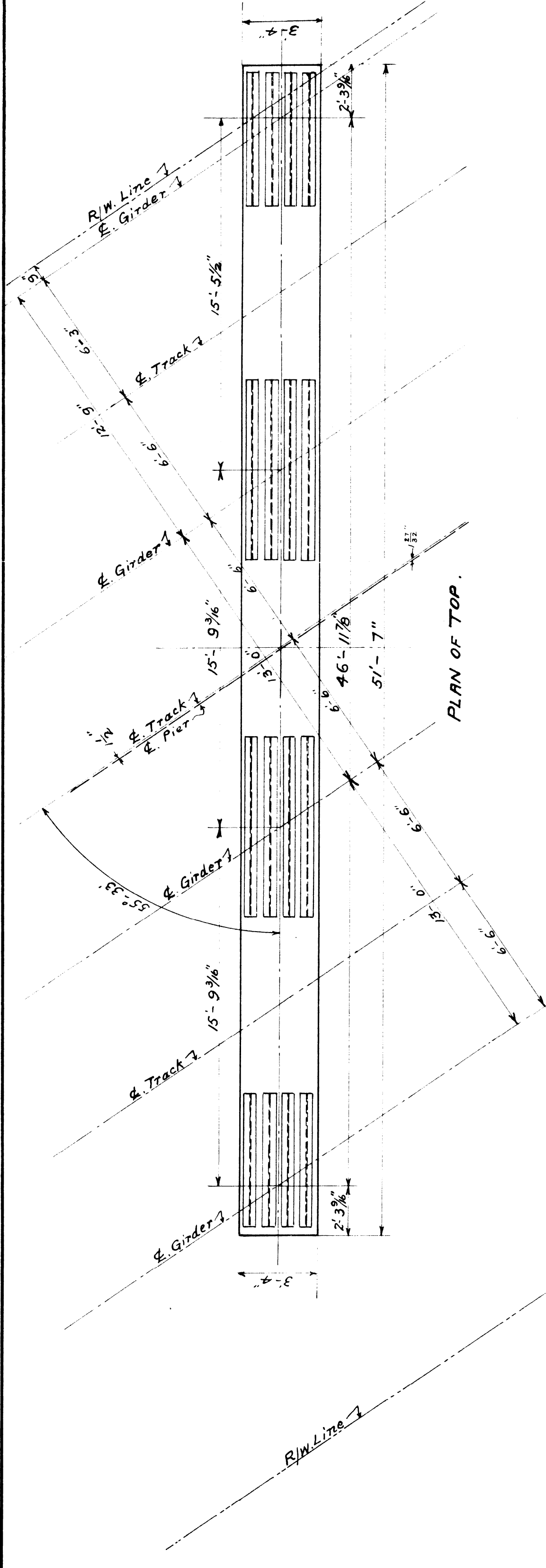
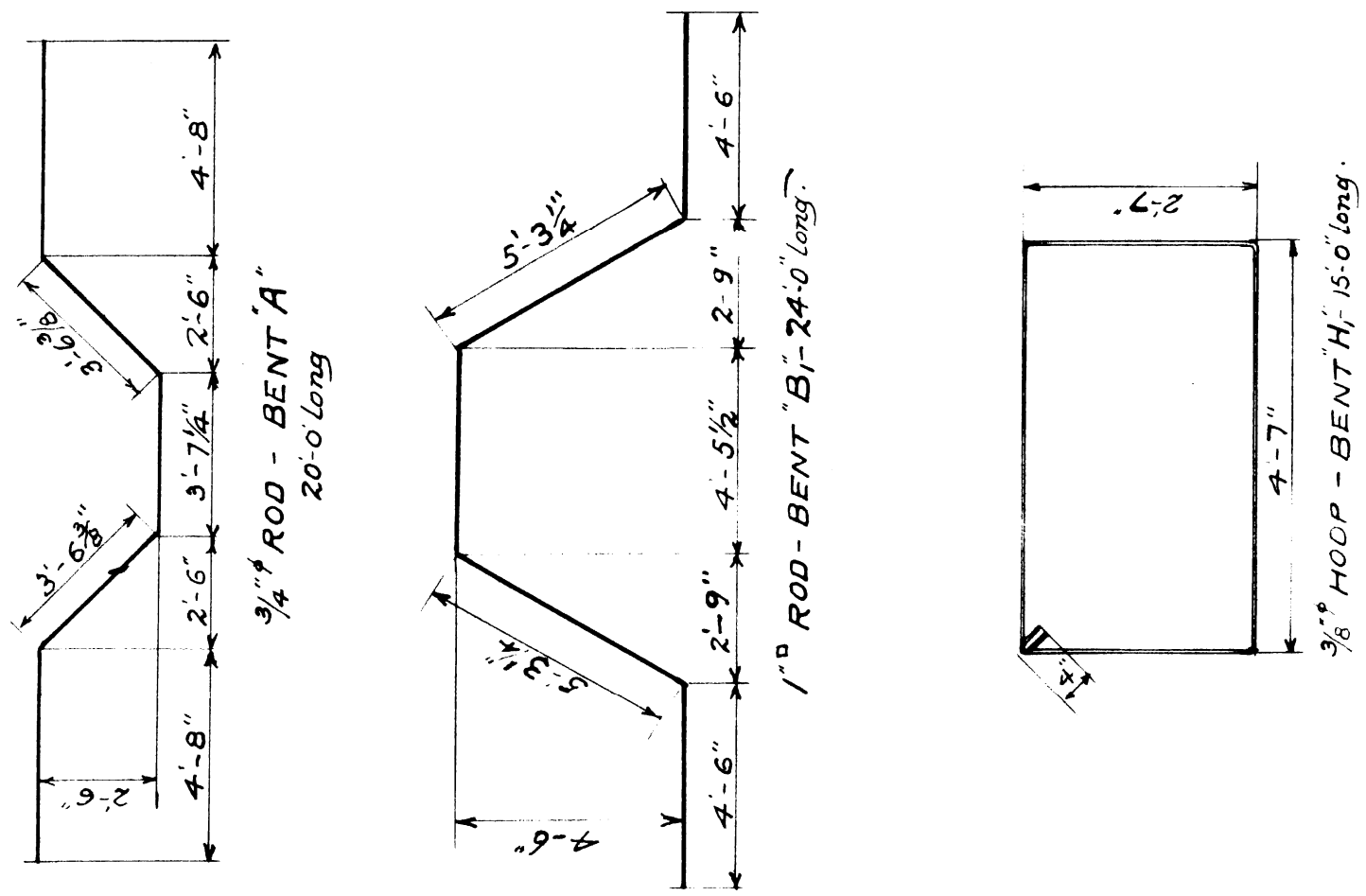
MCH. 25-1927.

SHEET 3 OF 8

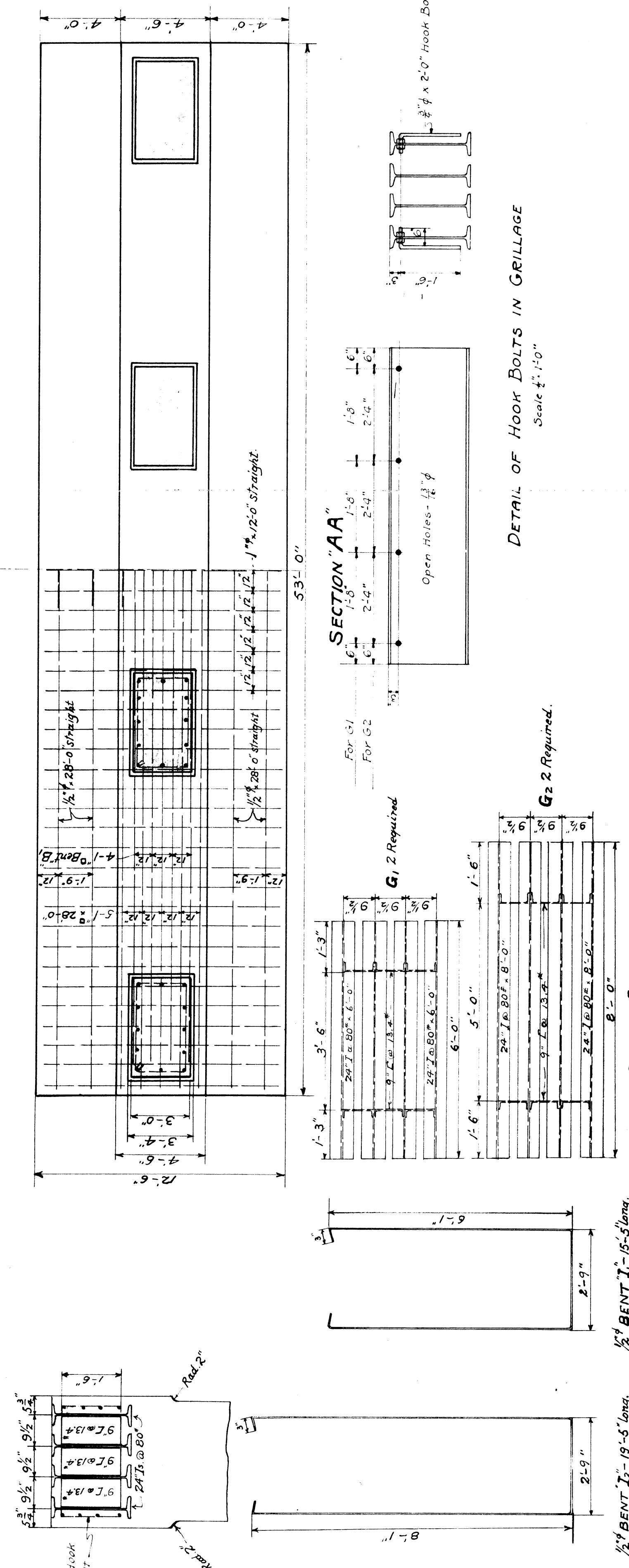
DRAWN BY R. W. TRACED BY R. W.

CHECKED BY R.H.S.

CORRUGATED STEEL RODS IN CENTER PIER.			
NO.	LOCATION.	LENGTH IN FEET.	SIZE I.C.C. REMARKS.
8	Grillage	15 5	3/4" 6" Bent "I"
9	Grillage	19 5	3/4" 6" Bent "I"
9	Top	20 0	3/4" 12" Bent "A"
6	Top	27 0	3/4" 12" Straight
14	Top	2 8	3/4" 12" curved Straight
18	Diagonals	10 0	3/4" 15" Straight
48	Columns	12 0	3/4" 13 1/2" Straight
48	Columns	15 0	3/4" 12" Hoops Bent "H"
12	Bottom	24 0	1" 12" Bent "B"
8	Bottom	28 0	1" 12" Straight
53	Bottom	12 0	1" 12" Straight
32	Grillage	2 0	3/4" 6" Bent



ELEVATION.



DETAIL OF HOOK BOLTS IN GRILLAGE

PLAN OF GRILLAGE

TABLE OF QUANTITIES		
UNITS	ESTIMATED	ACTUAL
Feet of Concrete	8588	8588
Pier Concrete	7087	7087
Reinforcing Steel	7356	7356
Grillage	9443	9443

FILE NO. 32-14