

QUANTITIES
 Structural Steel.....17,300 Lb.
 Expansion Anchors.....48 Ea.
 Bituminous Concrete
 Wearing Course.....20.2 Tons
 Rubber Calk
 Steel Re. to Concrete.....412 L.F.F.
 Expansion Joints.....10 L.F.F.

GENERAL NOTES
 Removal of median from bridge is in accordance with Department of Streets and Traffic Plan No. 18-210, dated 1-14-56.
 This plan covers Median Removal within bridge limits only.
 Place transverse expansion joints first.
 "Rubber Calk" shall be as manufactured by the Products Research Co. or an approved equal.

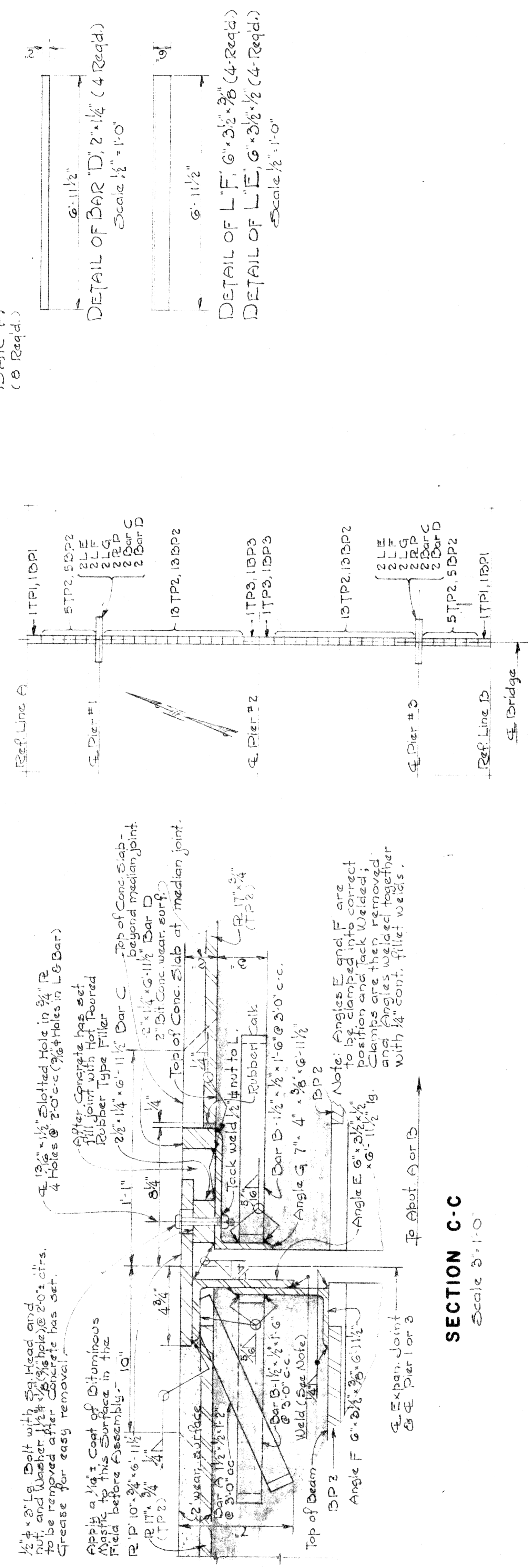
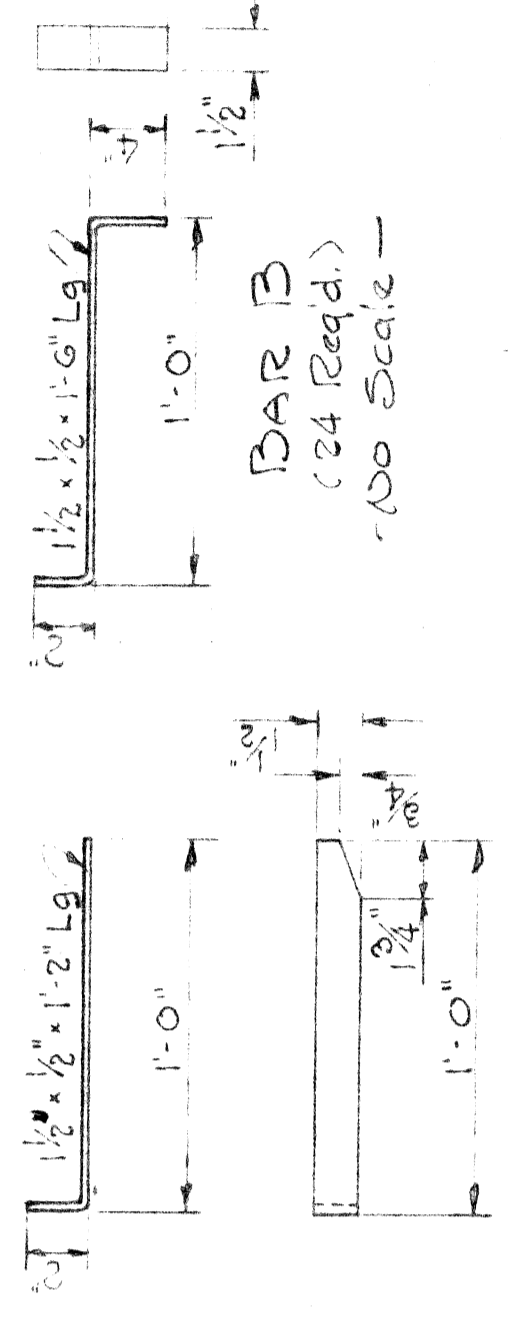
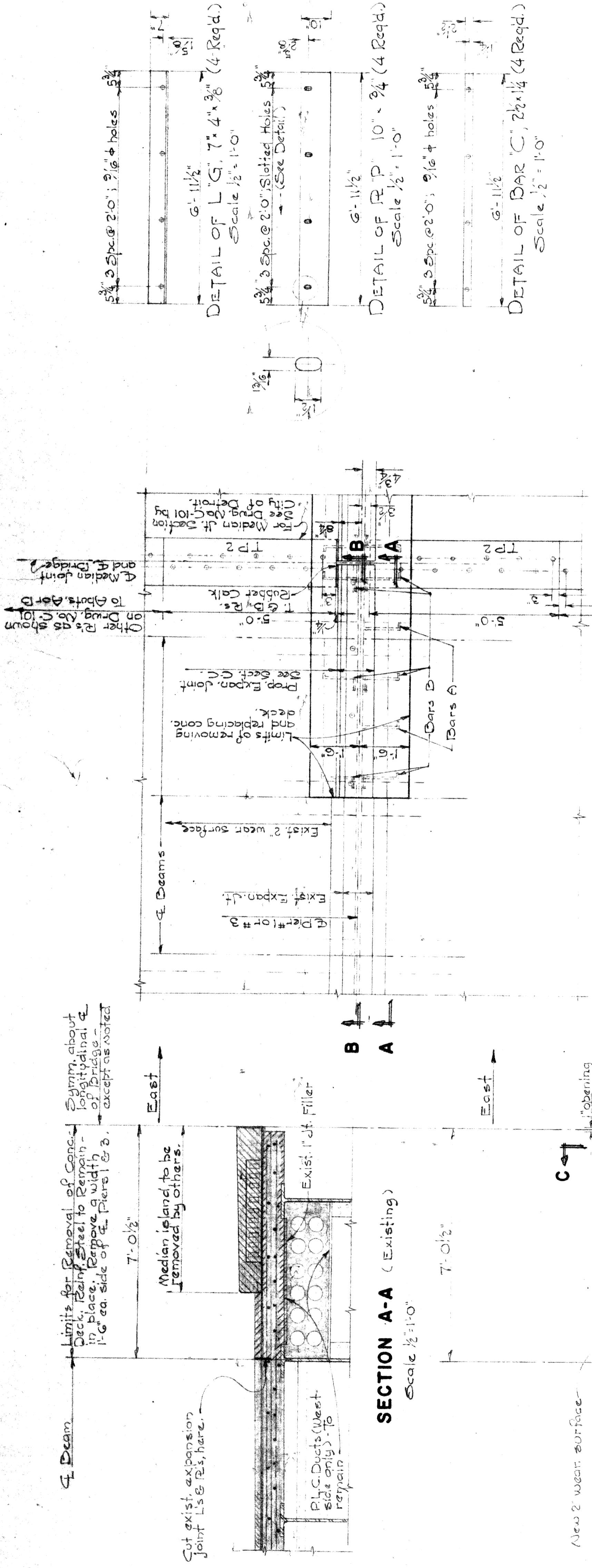
NOTED BY		DESCRIPTION	DATE
A			
B			
C			
D			
E			
F			

DESIGNED BY	APPROVED
STURM	
DRAWN BY	DATE
STURM	
TRACED BY	DATE
STURM	
CHECKED BY	DATE
STURM	

REFERENCE DRAWINGS	APPROVED
BRIDGES	

CITY ENGINEER	ASSISTANT CITY ENGINEER
STURM	

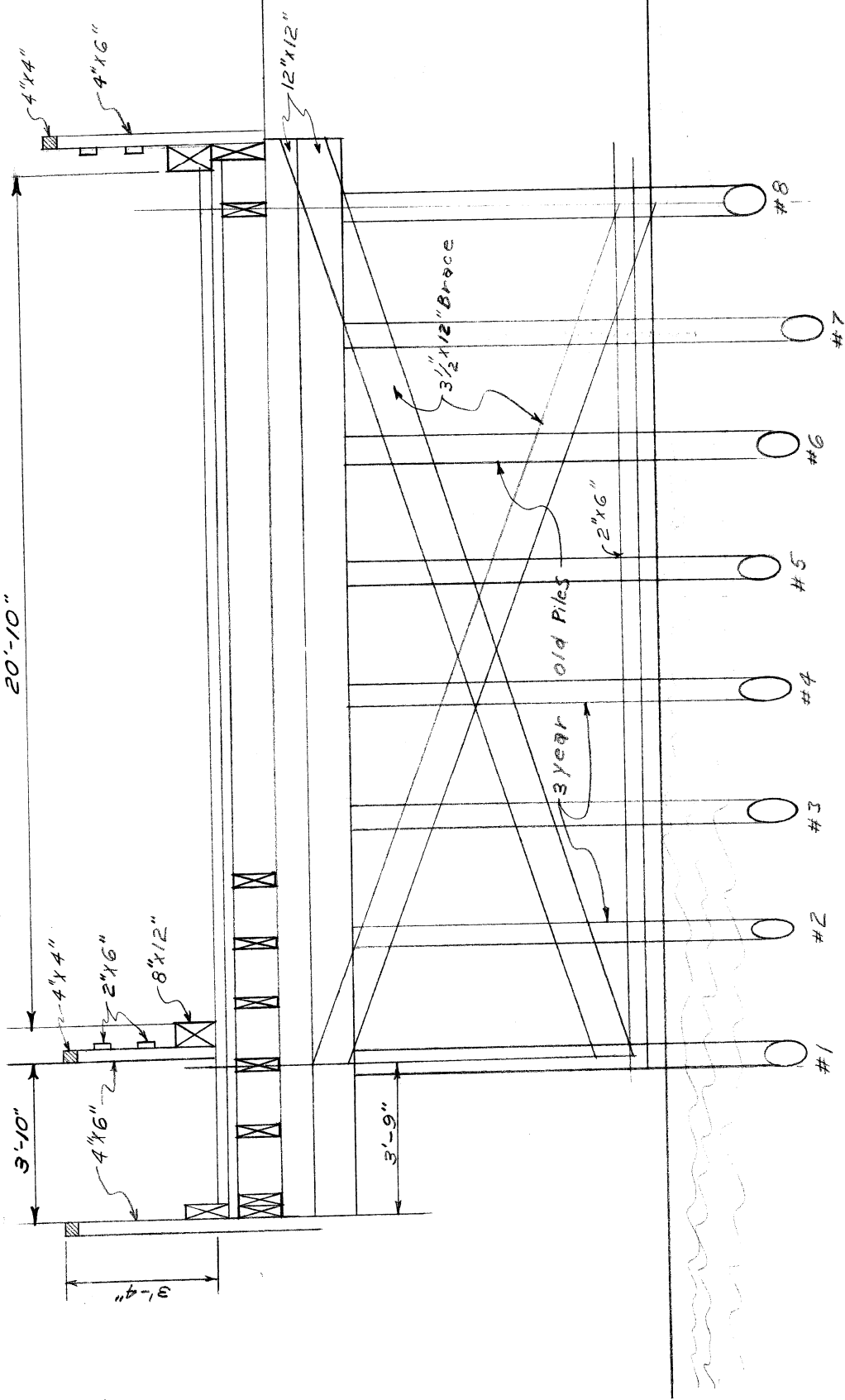
STURM C.C.L.



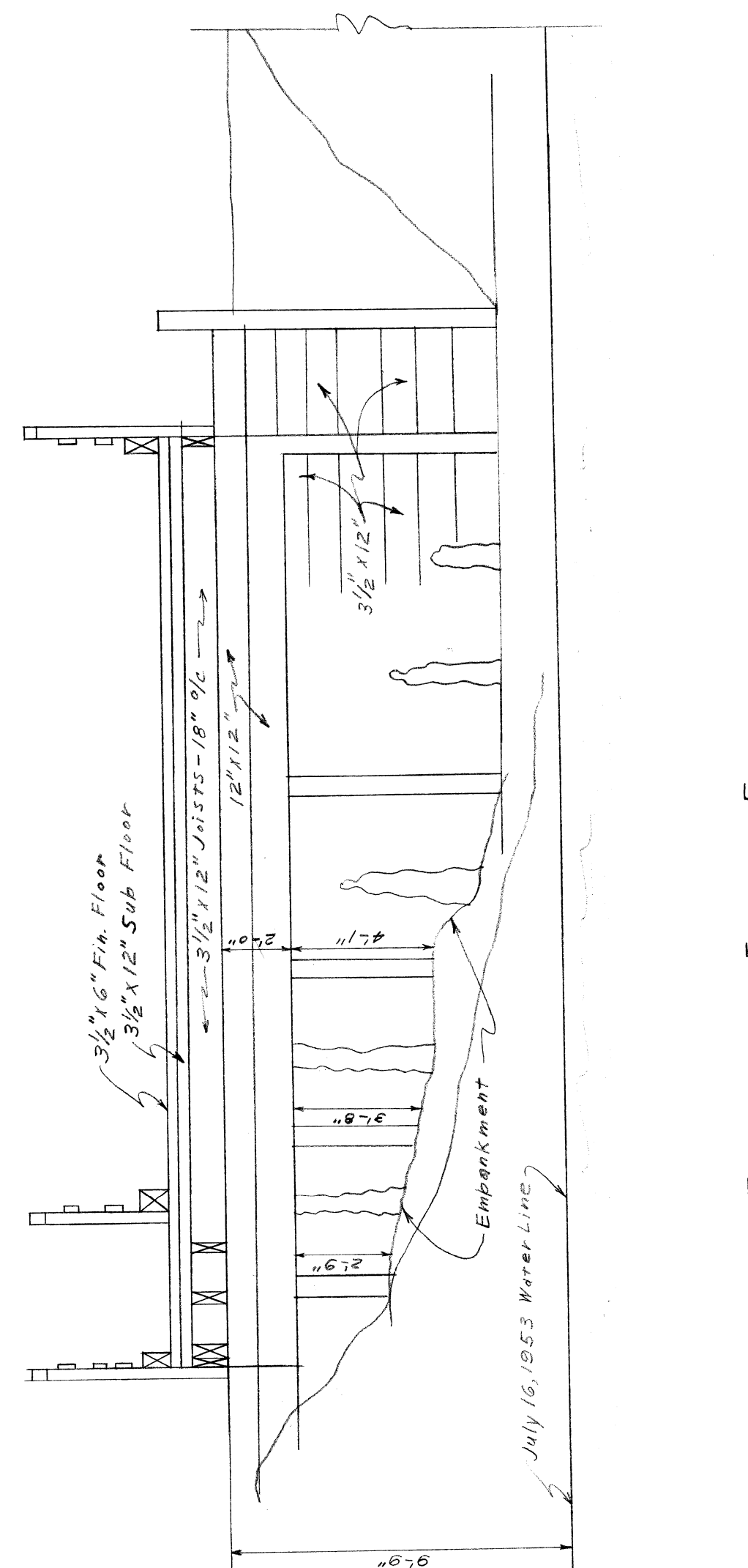
MARK NO.	SECTION	EXPANSION JOINTS	LENGTH	WEIGHT
P	R 10 x 24	6-11 1/2"	6-11 1/2"	709.9#
A	Bar 1 1/2 x 1/2	1-6"	1-6"	23.9
B	Bar 2 1/2 x 1/2	6-11 1/2"	6-11 1/2"	295.9
C	Bar 2 1/2 x 1/2	6-11 1/2"	6-11 1/2"	236.6
D	Bar 2 1/2 x 1/2	6-11 1/2"	6-11 1/2"	426.0
E	L 6 x 3 1/2 x 1/2	6-11 1/2"	6-11 1/2"	325.7
F	L 7 x 4 x 3/8	6-11 1/2"	6-11 1/2"	378.6
G	Mesh Bolt 1/2 x 6	3"	3"	4.4
	Flat Washers 2 1/2 x 2 1/2 (3/8 hole)			0.9
	Total 2 Expansion Joints			2,498.7
LEAD TUBULAR MEDIAN JOINT				
TP1	R 17 x 34	6-0 1/2"	6-0 1/2"	
TP2	R 17 x 34	5-0"	5-0"	8340.4
TP3	R 17 x 34	6-11 1/2"	6-11 1/2"	
BP1	R 12 x 34	4-6"	4-6"	
BP2	R 12 x 34	5-0"	5-0"	6,208.3
BP3	R 12 x 34	6-11 1/2"	6-11 1/2"	1,258.6
BP4	Mesh Bolt 3/4 x 6	10"	10"	
B	1/2\"/>			

Total Steel = 18,902 #

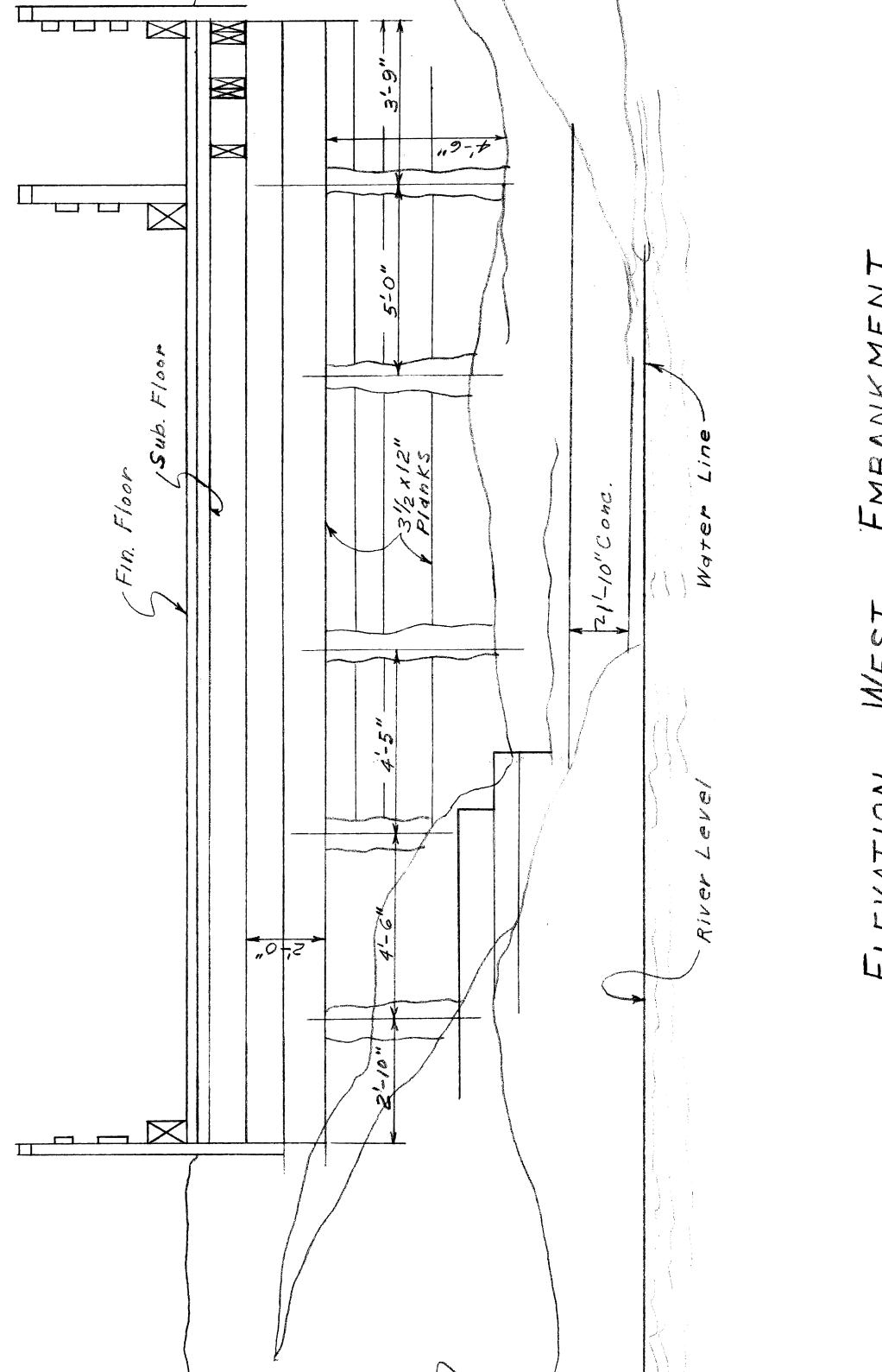
BRIDGE FILE	STATE PROJECT	COUNTY JOB	SHEET NO.
B21 of 82-22-10	741	741	X-1
EDSEL FORD EXPRESSWAY CROSSING LIVERNOIS AVE. STRUCTURAL STEEL DETAILS-1959 ALTERATIONS			
BOARD OF ROAD COMMISSIONERS DETROIT, MICHIGAN		CHARLES L. WILSON WILLIAM E. KREGER	
LIVERNOIS - MEDIAN REMOVAL Prod. Order # R-798			



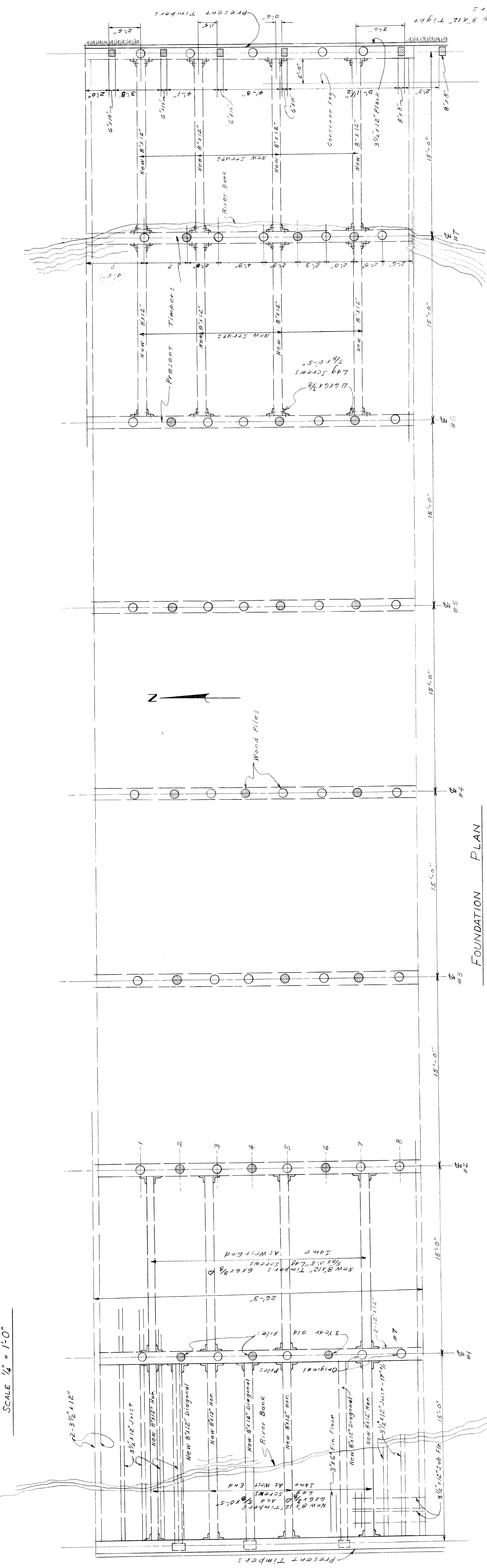
CROSS SECTION - LINE #1 LOOKING EAST
SCALE: 1/4" = 1'-0"



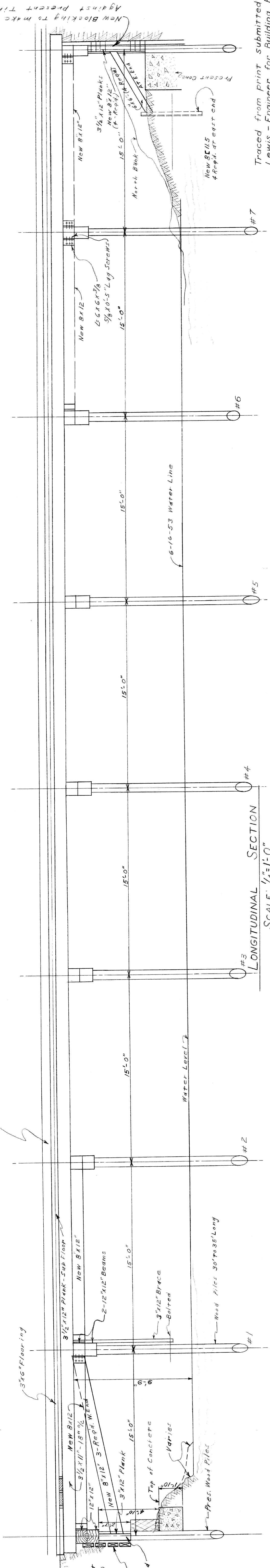
ELEVATION - EAST EMBANKMENT
SCALE: 1/4" = 1'-0"



ELEVATION - WEST EMBANKMENT
SCALE: 1/4" = 1'-0"



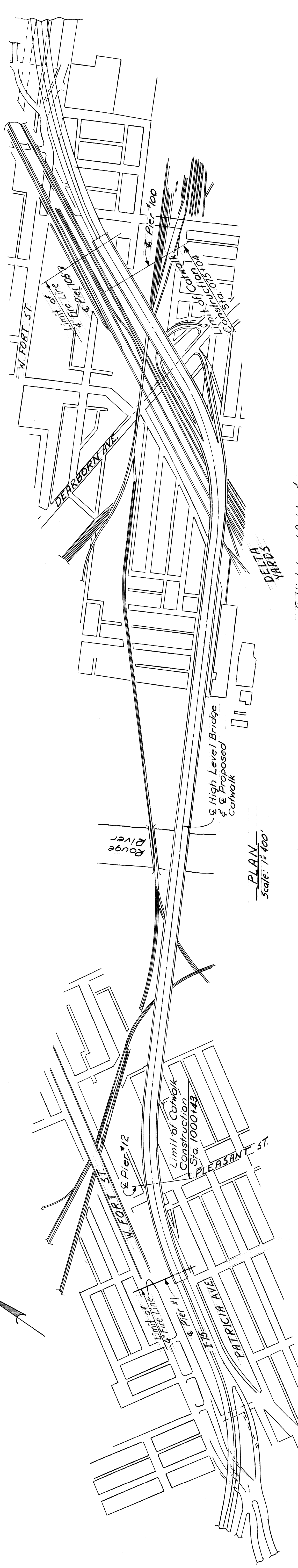
FOUNDATION PLAN
SCALE: 1/4" = 1'-0"



LONGITUDINAL SECTION
SCALE: 1/4" = 1'-0"

PRESENT BRIDGE AT ENTRANCE TO EDGEWATER PARK INC. 23500 W. 7 MILE ROAD

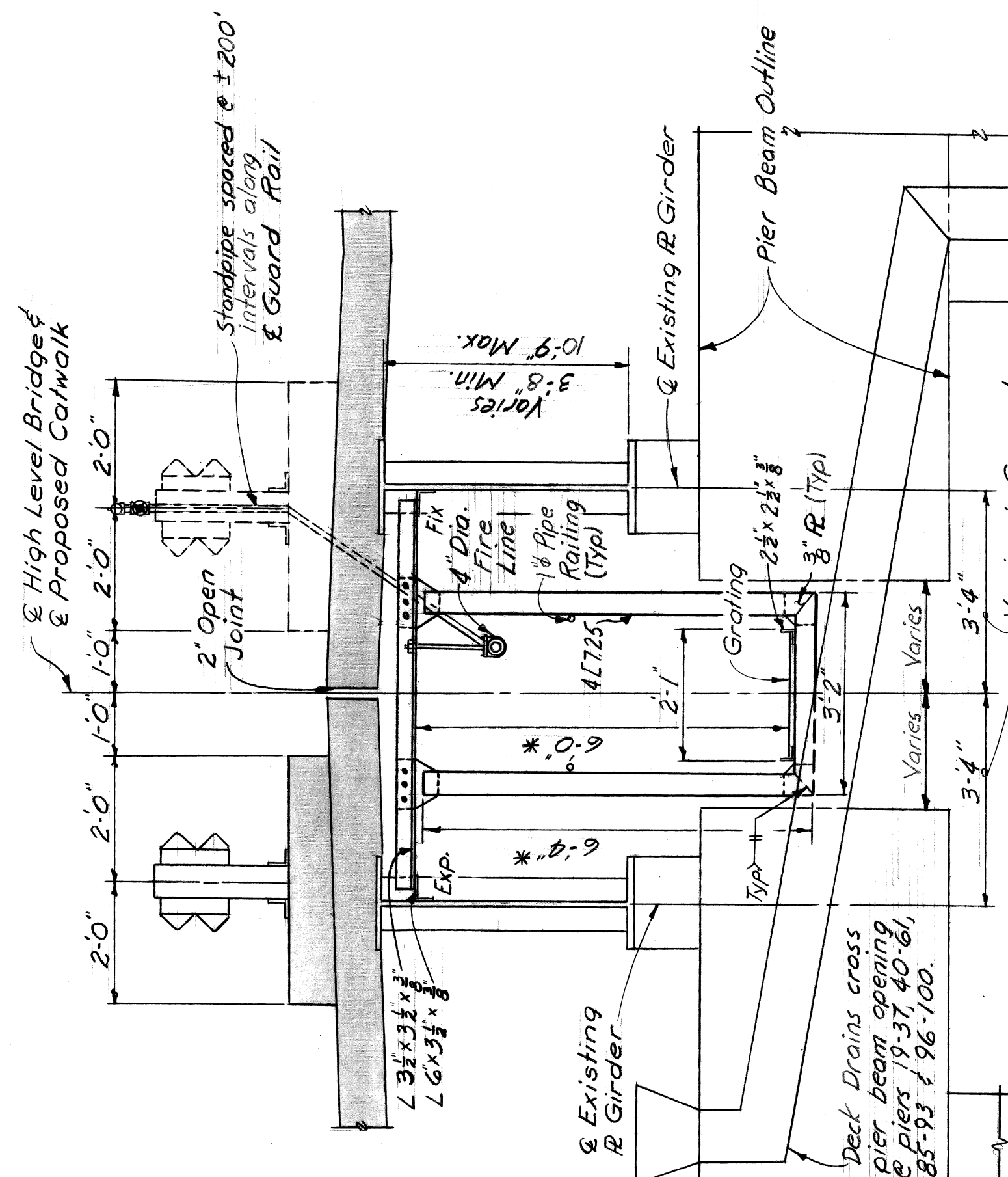
Traced from print submitted by I.M. Lewis - Engineer for Building Permit. Filed - Bldg & Safety Dept. #19993 LB Jackson 10-12-57



PLAN
Scale: 1/4"

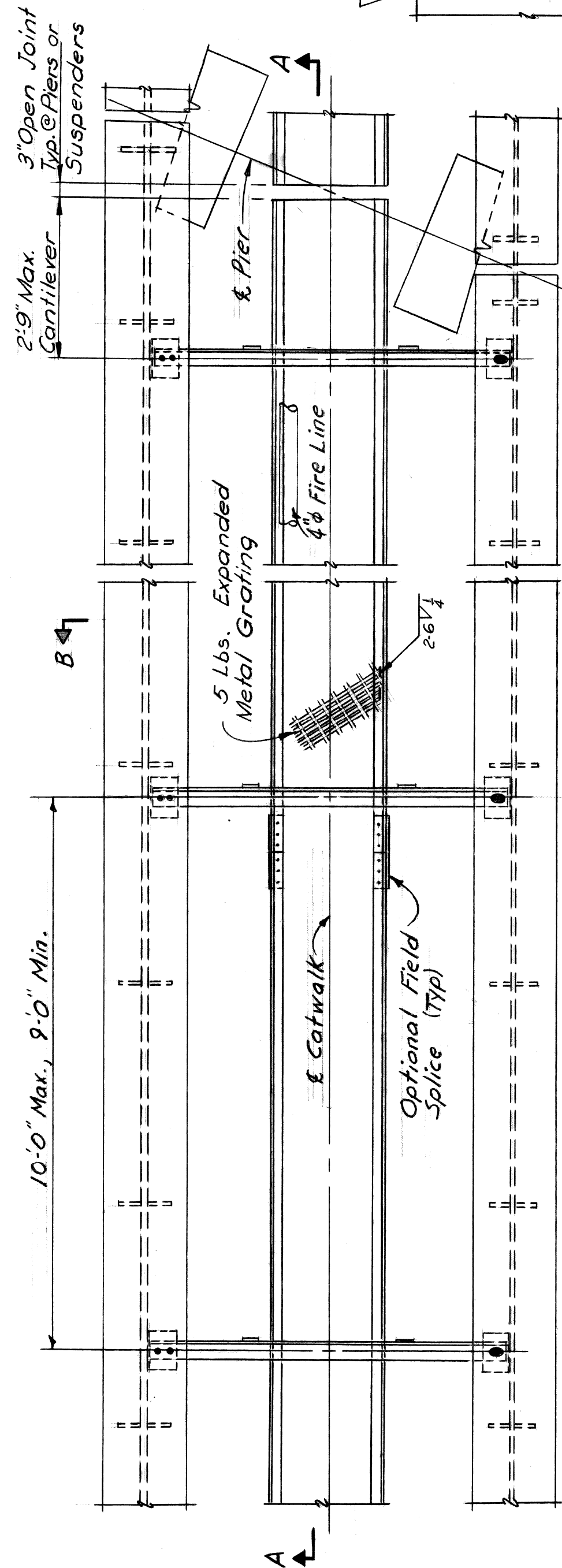
NOTES

The design of the catwalk is based on a live load of 50 p.s.f. The work covered by these plans includes the construction and relocating one Lighting Fixture. The bottom of the catwalk shall be parallel to the underside of the slab. The Contractor shall be responsible for providing adequate protection to roadway, railroad and river traffic below the construction area. Steel shall comply with ASTM designation A-96 except for grating, which shall comply with A.S.T.M. designation A-283-58T.

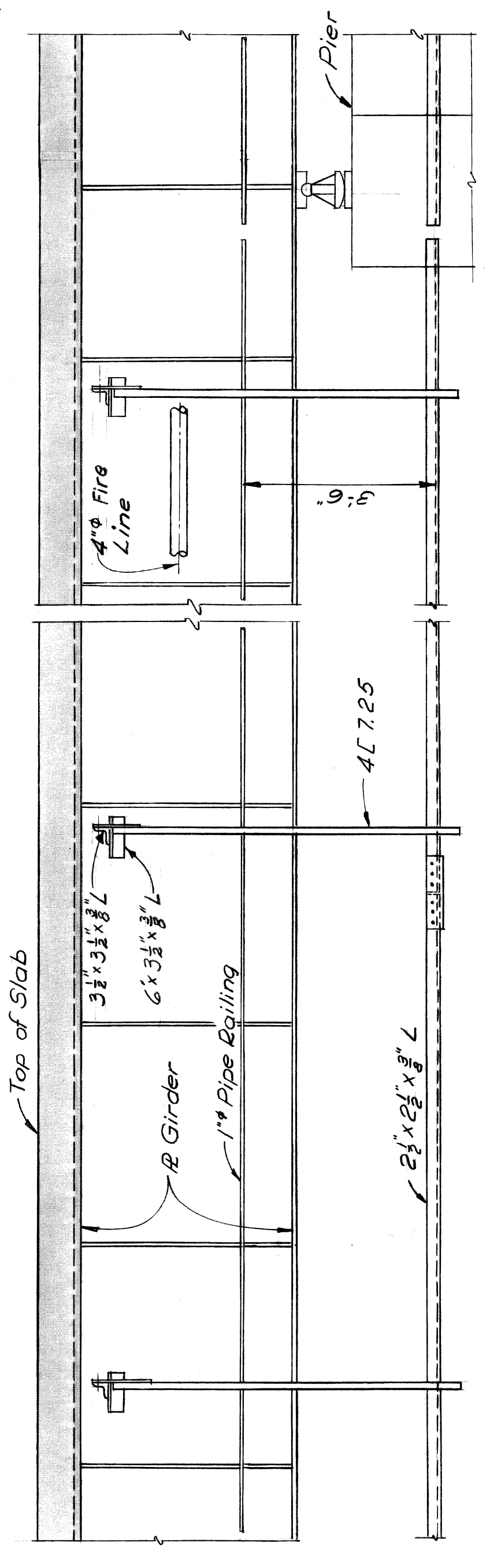


SECTION B-B

Notes: Discontinue or raise catwalk over Piers 37, 40 & 94 thru 97, and where required at Deck Drains.



TYPICAL PLAN - CATWALK



SECTION A-A

PLANS PREPARED BY
CITY OF DETROIT
DEPARTMENT OF PUBLIC WORKS
CITY ENGINEERS OFFICE
BUREAU OF HIGHWAYS AND EXPRESSWAYS

APPROVED: *[Signature]* **STRUCTURAL ENGINEER**
JOB No. **AO 1799**

DESIGN SUPERVISING ENGINEER
ASS'T. ENGINEER OF DESIGN

MICHIGAN DEPARTMENT OF STATE HIGHWAYS
DRY FIRE PROTECTION LINE HIGH LEVEL BRIDGE
OVER ROUGE RIVER

SITE PLAN AND DETAILS

DESIGNED BY	AG	TAB	6-68
CHECKED BY	D.J.R.	7-68	
SHEET			1