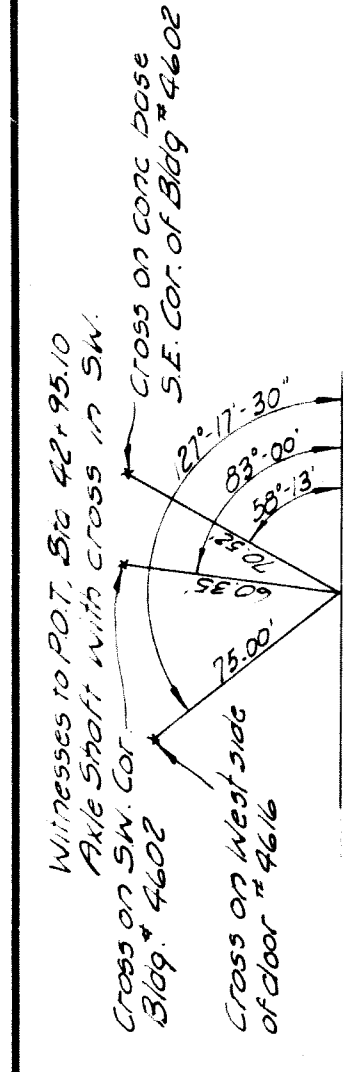




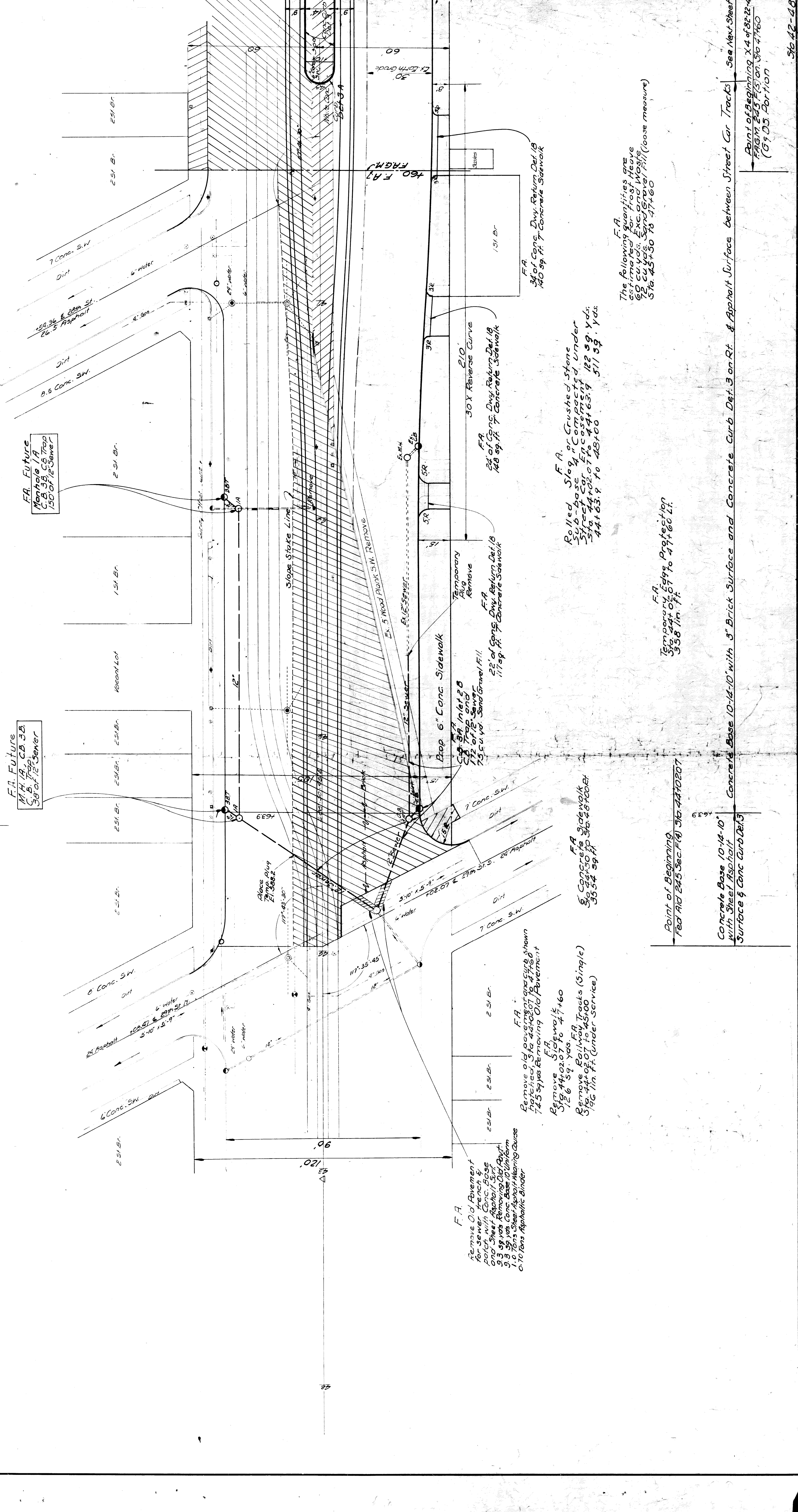


FED. ROAD DIST. NO.	STATE	FISCAL YEAR	SHEET NO.	TOTAL SHEETS
7	MICH.	245 F(5)	8	8
ROUTE	PROJECT	CITY	SHEET NO.	TOTAL SHEETS
4512	82-29	WAYNE	8	8
FED. ROAD DIST. NO.	STATE	FISCAL YEAR	SHEET NO.	TOTAL SHEETS
7	MICH.	245 F(5)	8	8
ROUTE	PROJECT	CITY	SHEET NO.	TOTAL SHEETS
4512	82-29	WAYNE	8	8

BM 12 Elev 594.50  
Cross in W. Edge of Conc. Slab  
at 171.5' from P.M.E.  
71.5' Cor. 2019.51



Note: All notes in block to apply on contracts as marked



F.A. Future  
Manhole 1A  
C.B. 3B, C.B. 3C, Trap  
150 of 12" Sewer

F.A. Future  
M.H. 1A, C.B. 3B,  
C.B. 3C, Trap  
38 of 12" Sewer

F.A.  
Remove Old Pavement  
for sewer trench &  
patch with Conc. Base  
and Sheet Asphalt Surf.  
9.3 sq. yds. Removing Old Pavt.  
1.0 Ton's Sheet Asphalt Heating Course  
0.10 Ton's Asphaltic Binder

F.A.  
Remove old pavement and curb shown  
hatched, Sta 441.00 to 441.60  
74.5 sq. yds. Removing Old Pavement  
Remove Sidewalk  
Sta. 441.00 to 441.60  
126 sq. yds.  
Remove Railway Tracks (Single)  
Sta. 441.00 to 445.00  
196 lin. ft. (under service)

F.A.  
6" Concrete Sidewalk  
Sta. 441.50 to 442.60  
355.54 sq. ft.

F.A.  
Rolled, Slag or Crushed Stone  
Sub-base 4" Compacted Under  
Sheet Asphalt  
Sta. 441.00 to 441.60  
441.63.9 to 441.63.9 122 sq. yds.  
441.63.9 to 441.60 481.00 511 sq. yds.

F.A.  
22" of Conc. Dwy. Return Det. 18  
117 sq. ft. 7" Concrete Sidewalk

F.A.  
24" of Conc. Dwy. Return Det. 18  
148 sq. ft. 7" Concrete Sidewalk

F.A.  
30 X Reverse Curve  
210

F.A.  
34" of Conc. Dwy. Return Det. 18  
140 sq. ft. 7" Concrete Sidewalk

F.A.  
The following quantities are  
estimated for frost heave  
9 cu. yds. Exc. gravel base  
576.45-50 to 47+60

F.A.  
Temporary Edge Protection  
Sta. 441.00 to 47+60  
338 lin. ft.

Point of Beginning  
Fed Aid 245 Sec. F(4) Sta. 441.00

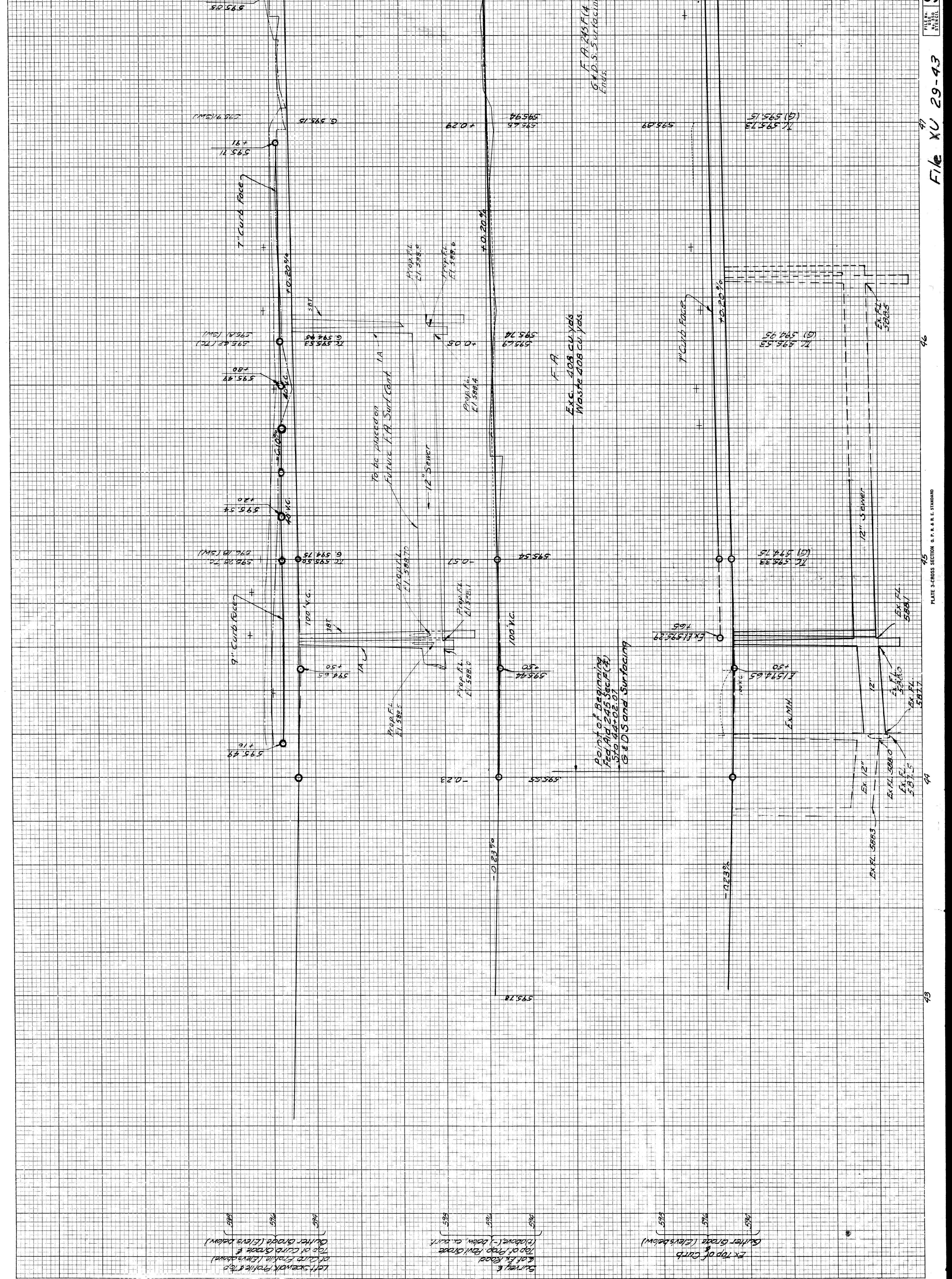
Concrete Base 10-14-10  
with Sheet Asphalt  
Surface & Conc. Curb Det. 3

Concrete Base 10-14-10 with 3" Brick Surface and Concrete Curb Det. 3 on Rt. & Asphalt Surface between Street Car Tracks See Next Sheet

Point of Beginning X 4 of 82-29-4  
FRAGM 245 F(5) on Sta. 47+60  
(G.S.D. Portion)



FED. ROAD STATE	FED. AID	FISCAL YEAR	SHEET NO.	TOTAL SHEETS
7	MICH.	245 F(4)	9	9
ROUTE	PROJECT	COUNTY	CITY	TOTAL SHEETS
US 12	82-29	WAYNE	DETROIT	9
FED. ROAD STATE	FISCAL YEAR	SHEET NO.	TOTAL SHEETS	
DIS. NO.	MICH.	245 F(4)	9	9
ROUTE	PROJECT	COUNTY	CITY	TOTAL SHEETS
US 12	82-29	WAYNE	DETROIT	9



NO.	DATE	BY
NO.	DATE	BY

FINAL SURVEY PLOTTED BY Skogen

ORIGINAL SURVEY PLOTTED BY Skogen

DATE 8-27 8-28

DATE 8-27 8-28





















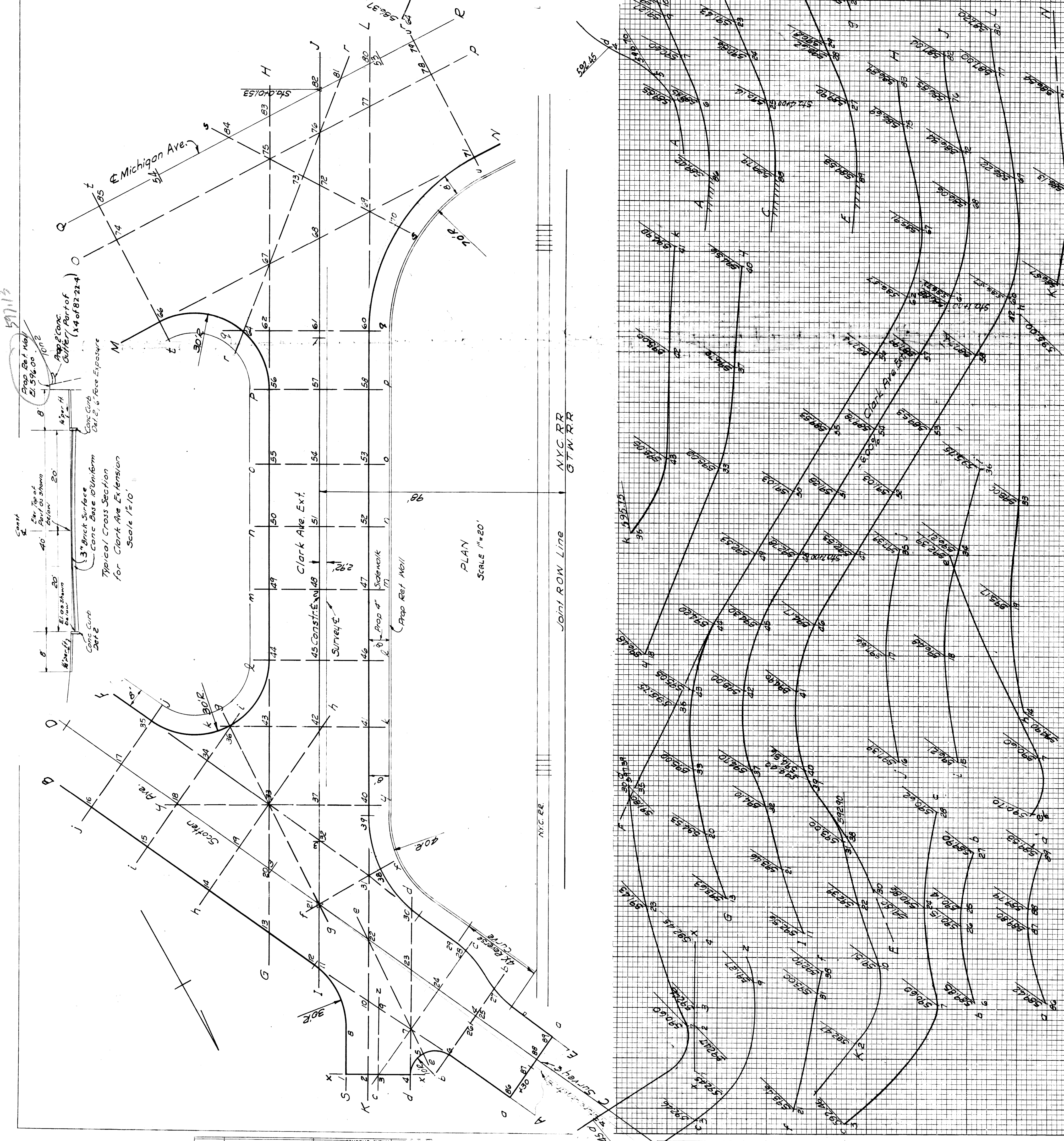
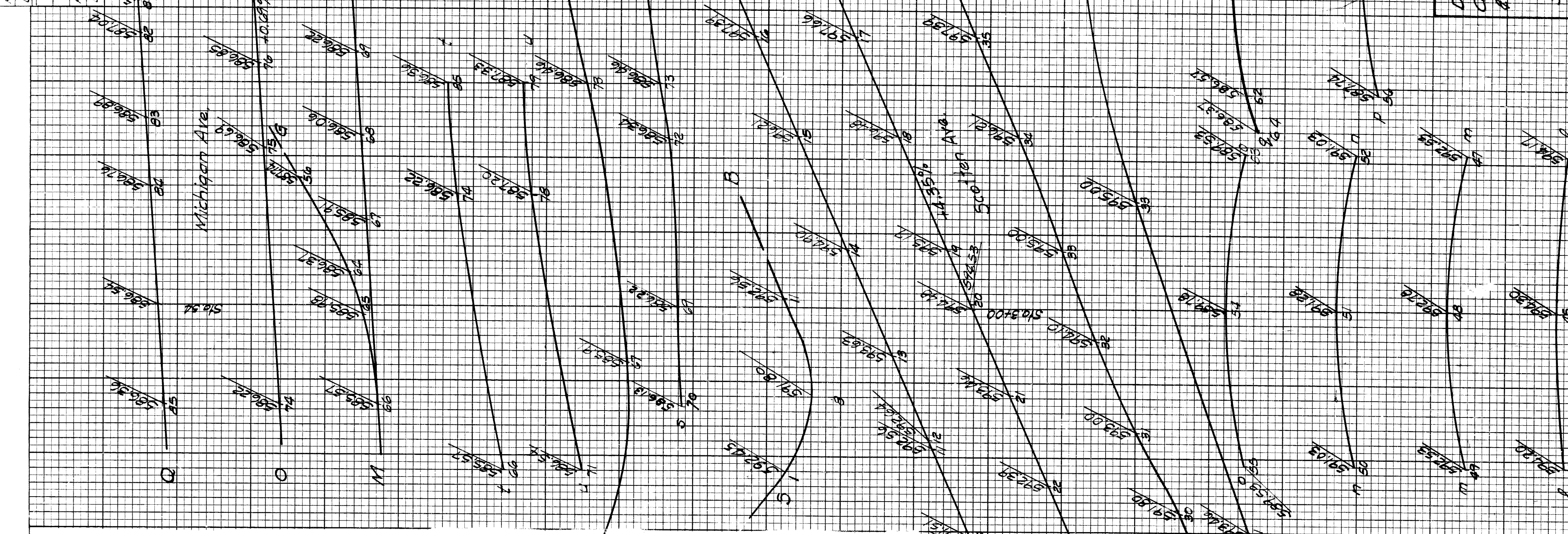












52255 D  
 52255 D

NO. AREAS CHECKED  
 NOTE BOOK AREAS CHECKED  
 SURVEY PLOTTED  
 DATE

NO. AREAS CHECKED  
 NOTE BOOK AREAS CHECKED  
 SURVEY PLOTTED  
 DATE

DETAIL PAVEMENT GRADIES  
 CLARK AVE EXT-MICHIGAN AVE,  
 & SCOTTEN AVE INTERSECTIONS  
 ALL DIMENSIONS SHOWN ARE FOR 100'  
 AT FINISHED PROPOSED GRADE  
 STABLES: Profiles List 15 - Stationed Vert. 4/  
 DRAWN BY: D. W. WILSON



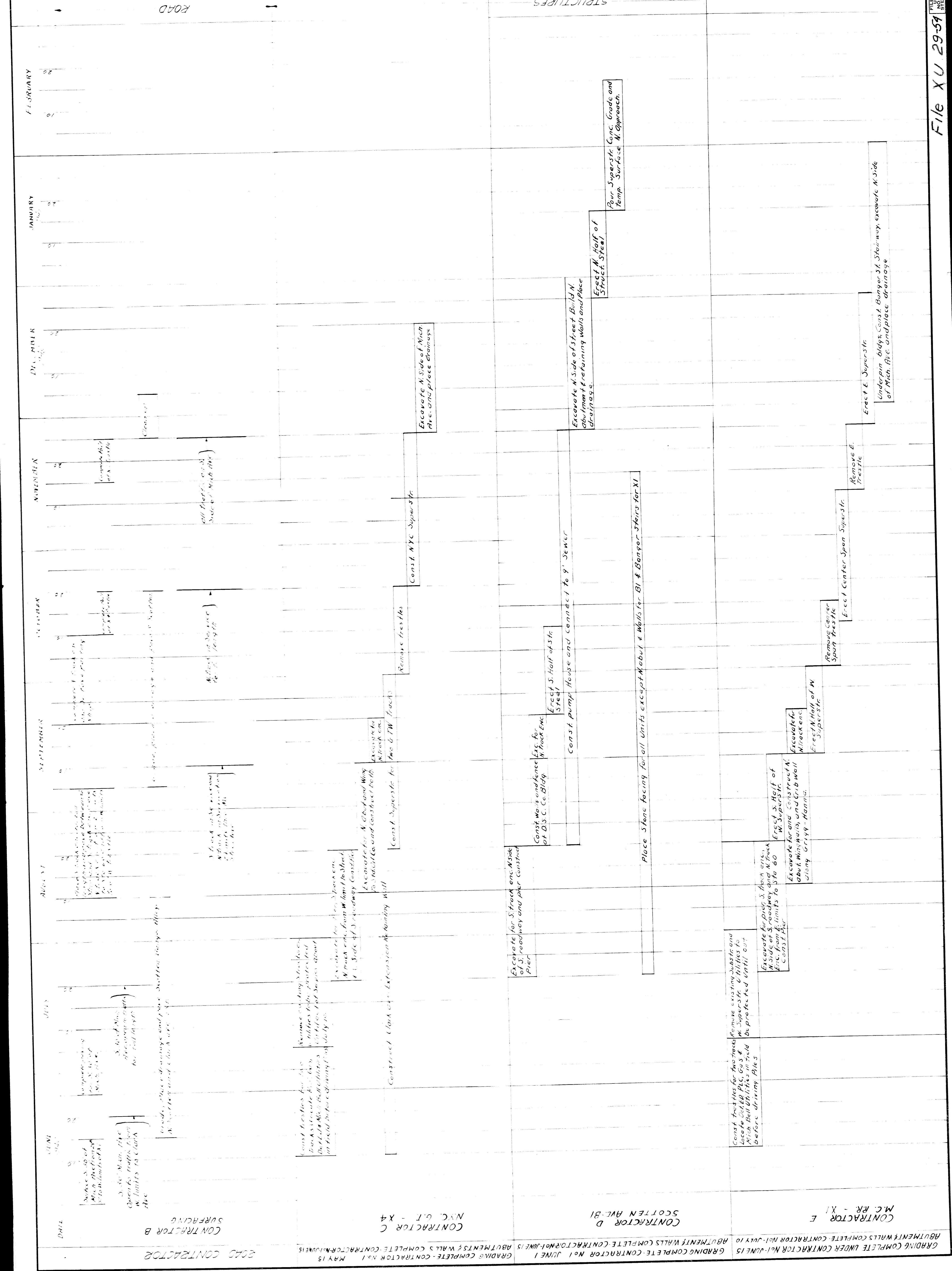








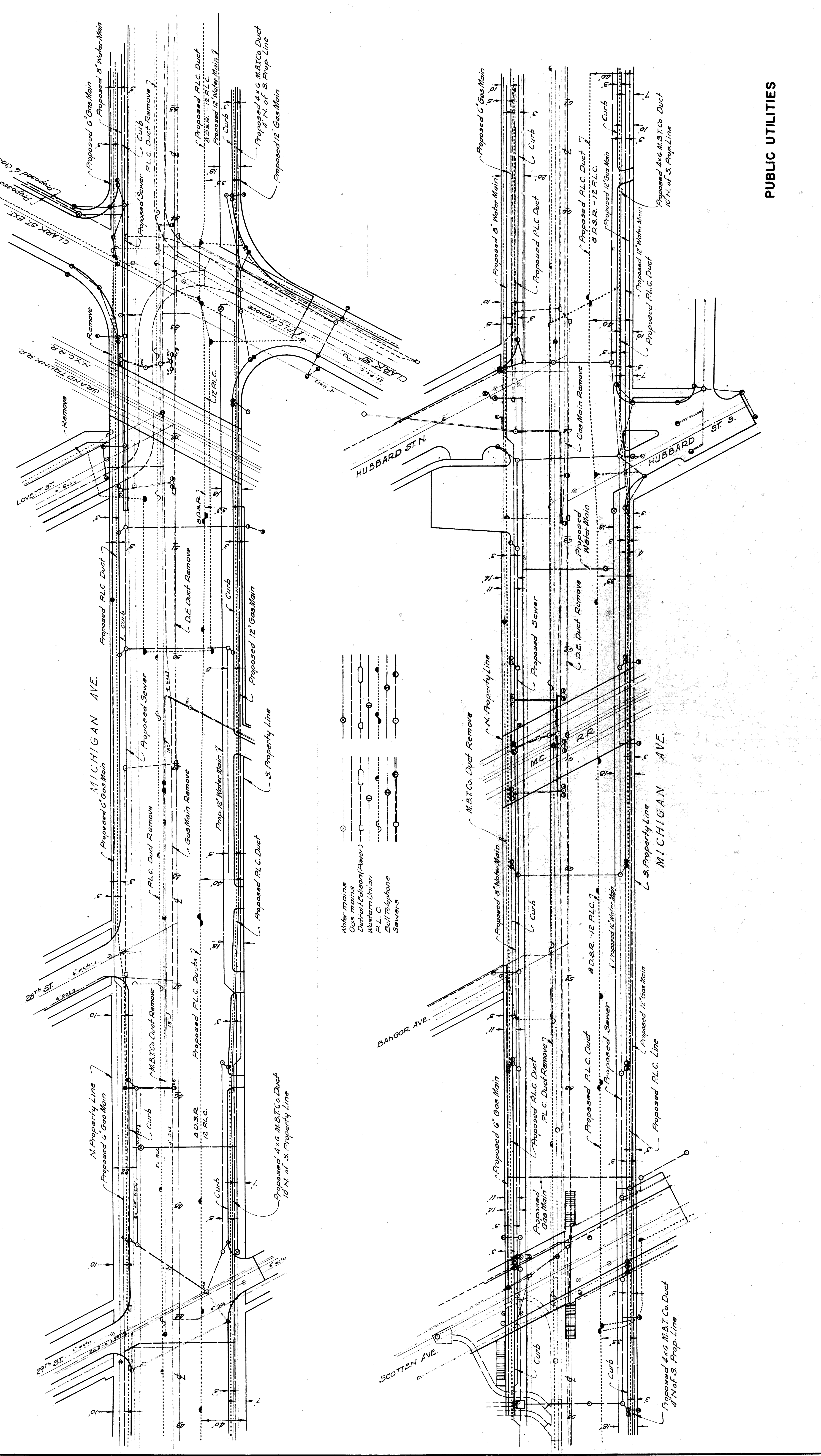
FED. ROAD DIST. NO.	STATE	FED. AID PROJ. NO.	FISCAL YEAR	SHEET NO.	TOTAL SHEETS
7	MICH.	245 F (4)		37	37
ROUTE	STATE	COUNTY	CITY	SHEET NO.	TOTAL SHEETS
US 112	MI	WASHE	DETROIT	37	37
FED. ROAD DIST. NO.	STATE	FED. AID PROJ. NO.	FISCAL YEAR	SHEET NO.	TOTAL SHEETS
7	MICH.	245 F (4) (a)		37	37
ROUTE	STATE	COUNTY	CITY	SHEET NO.	TOTAL SHEETS
US 112	MI	WASHE	DETROIT	37	37



Construction Progress Schedule

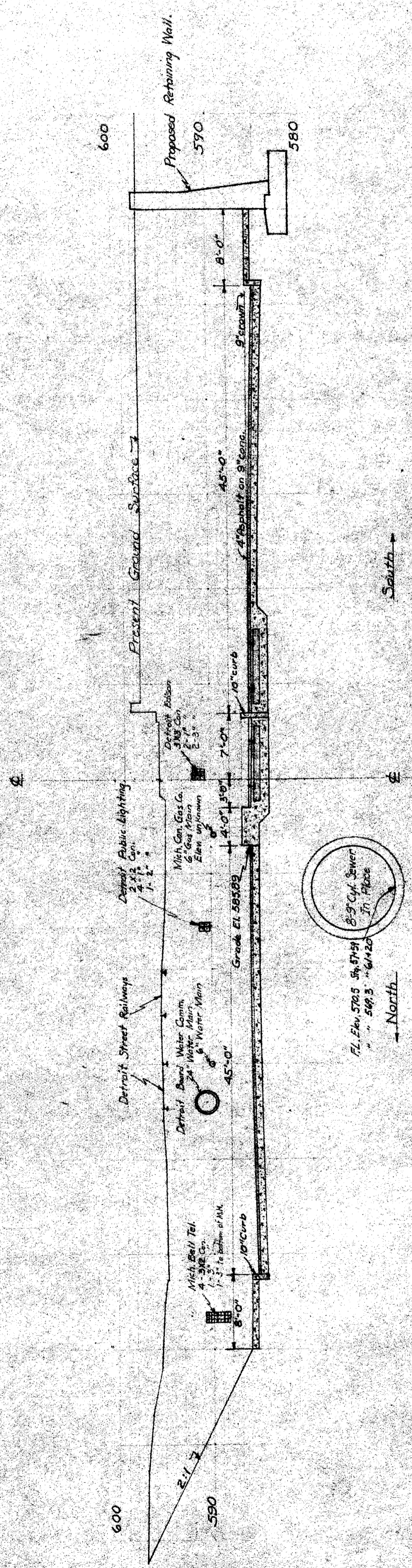


FED. ROAD DIST. NO.	STATE	FISCAL YEAR	SHEET NO.	TOTAL SHEETS
7	MICH.	245 F (4)	38	38
ROUTE PROJECT	CITY	CITY	SHEET NO.	TOTAL SHEETS
4312 B2-29	Wayne	De Mot	38	38
FED. ROAD DIST. NO.	STATE	FISCAL YEAR	SHEET NO.	TOTAL SHEETS
7	MICH.	245 F (4) (4)	38	38
ROUTE PROJECT	CITY	CITY	SHEET NO.	TOTAL SHEETS
4312 B2-29	Wayne	De Mot	38	38

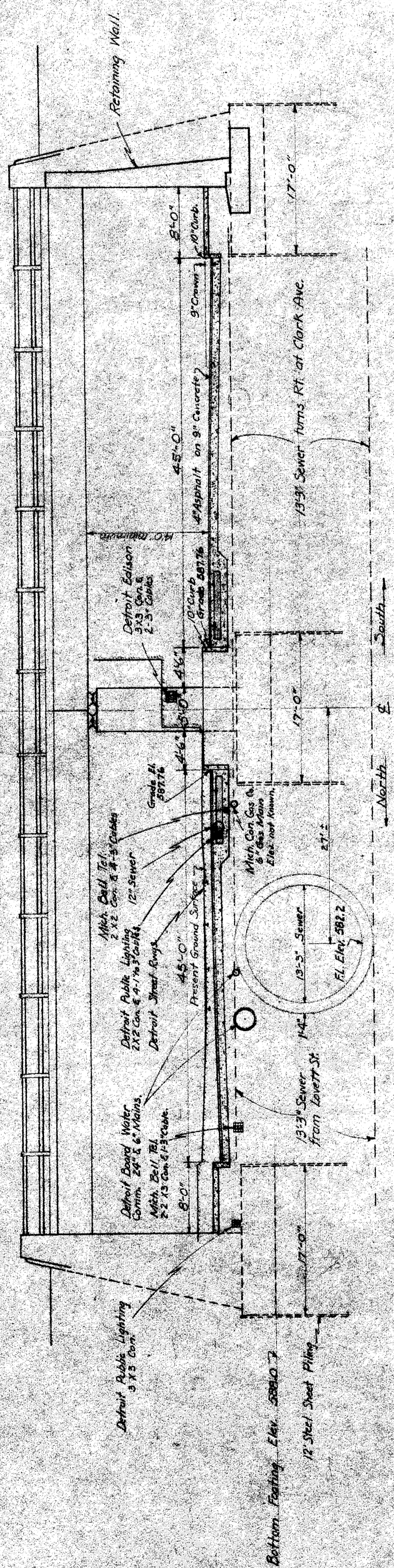


PUBLIC UTILITIES





CROSS-SECTION MICHIGAN AVE. AT STA. 58+00  
 173.31' EAST OF SCOTTEN AVE. GRADE SEPARATION  
 SCALE 1/8" = 1'



CROSS-SECTION MICHIGAN AVE. AT STA. 52+06.69  
 AT G.T.W. R.R. GRADE SEPARATION  
 SCALE 1/8" = 1'

MAR 39

MICHIGAN STATE HIGHWAY DEPARTMENT  
 MURRAY D. VAN WAGONER  
 STATE HIGHWAY COMMISSIONER WAYNE CO.  
 SEC. T.25 R.11E  
 BRIDGE FILE NO. XI 154 OF 22-4 ROAD MICHIGAN AVE.  
 CROSSING G.T.W. R.R., NYCKER, M.C.R.R., SCOTTEN AVE. IN CITY OF DETROIT  
 TYPICAL SECTION ON MICH. AVE. SHOWING UTILITIES

SCALE	1/8" = 1'
DATE	3-6-39
CHECKED BY	
APPROVED BY	

APPROVED: *[Signature]*  
 3-6-39



Oct 38

**MICHIGAN STATE HIGHWAY DEPARTMENT**  
 MURRAY D. VAN WAGONER  
 STATE HIGHWAY COMMISSIONER

WAYNE CO.  
 ROAD MICHIGAN AVENUE  
 CROSSING ST. W. R. N. C. B. R. & SCOTTEN AVE. IN CITY OF DETROIT

**PROPOSED STREET PLAN**  
 SCHEME NO. 1

APPROVED: \_\_\_\_\_  
 CHECKED: \_\_\_\_\_  
 DRAWN BY: \_\_\_\_\_  
 SCALE: \_\_\_\_\_

XMX 4-62-22-4

