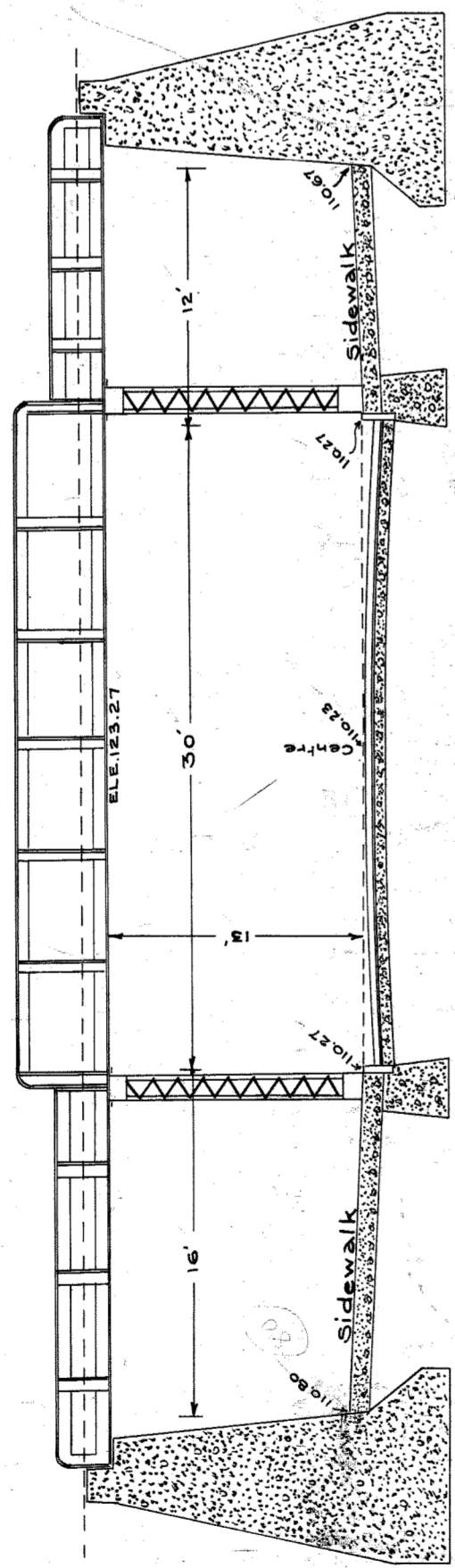


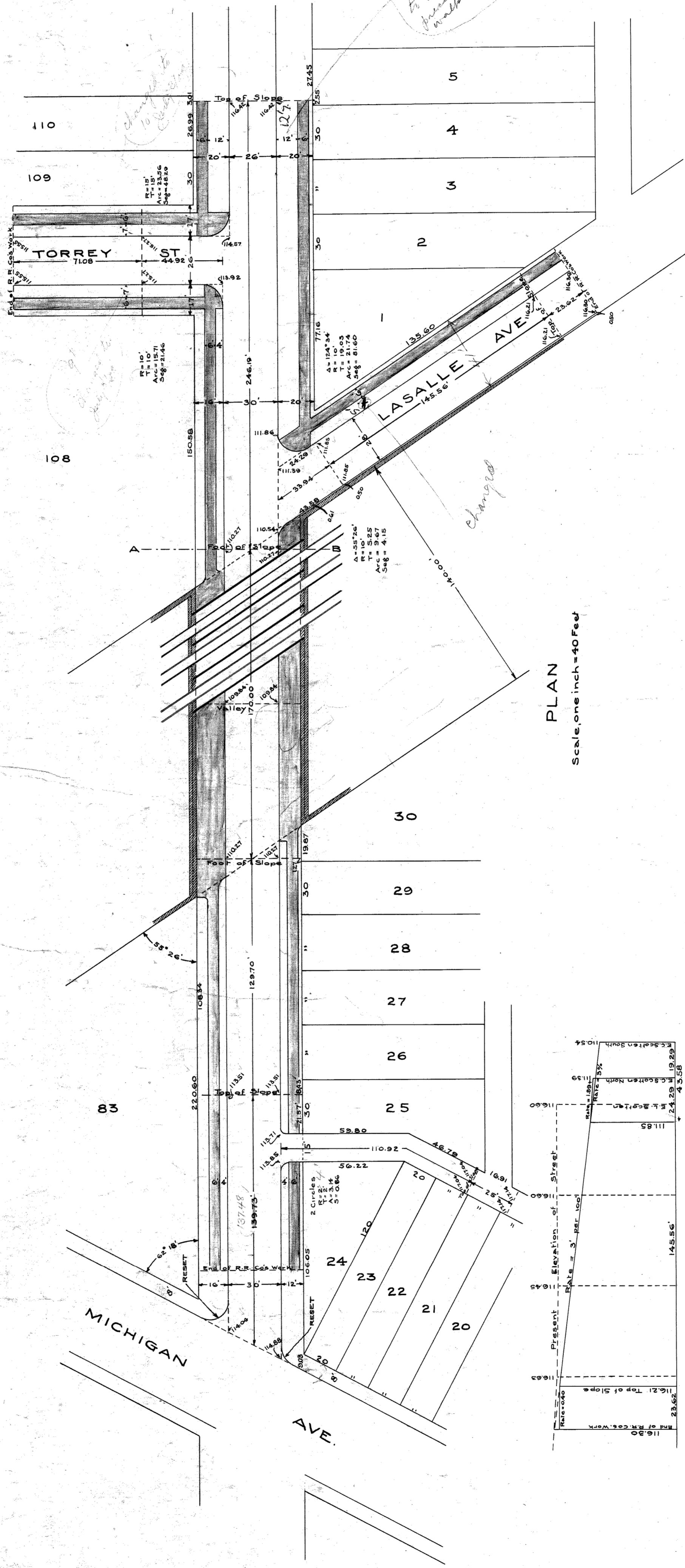
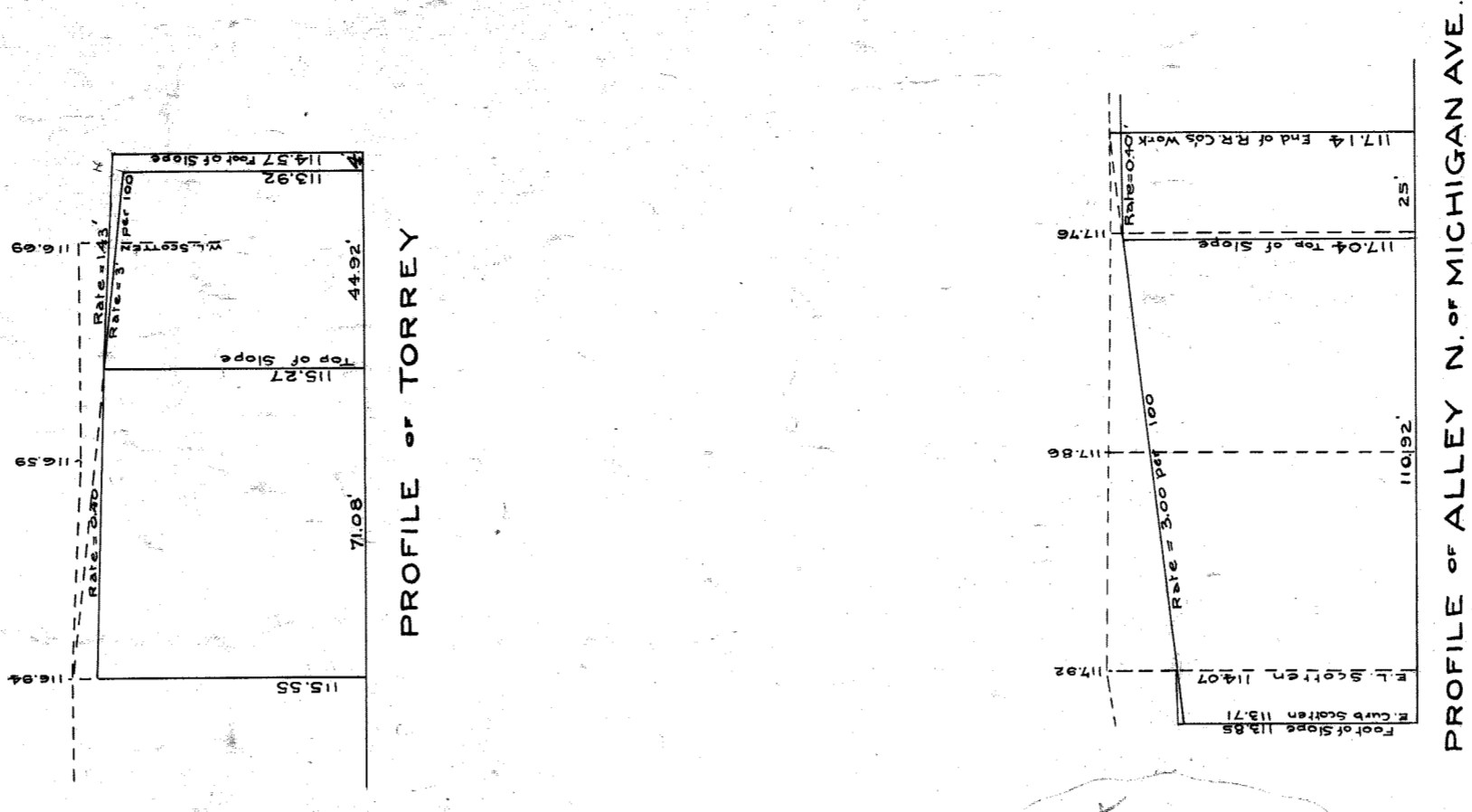
Approved:

City Engineer  
Chief Engineer

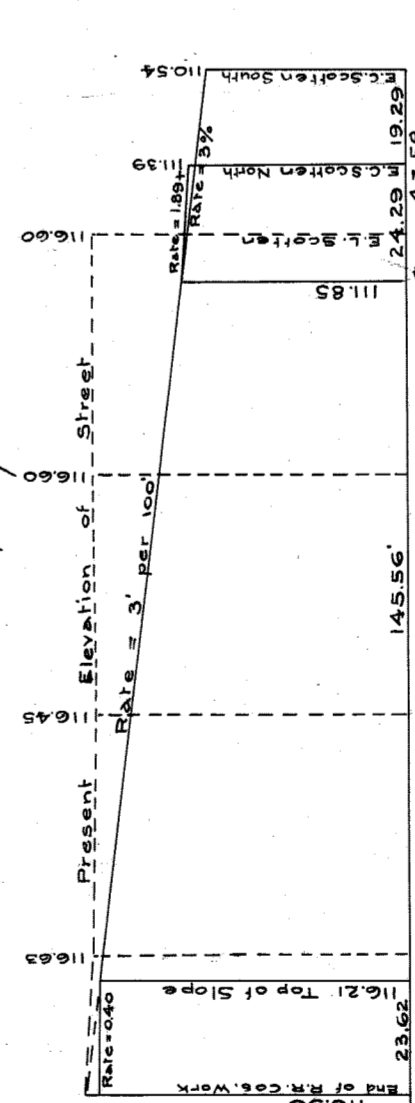
# PROPOSED SUBWAY IN SCOTTEN AVENUE UNDER L.S.&M.S. & G.T. RWYS.



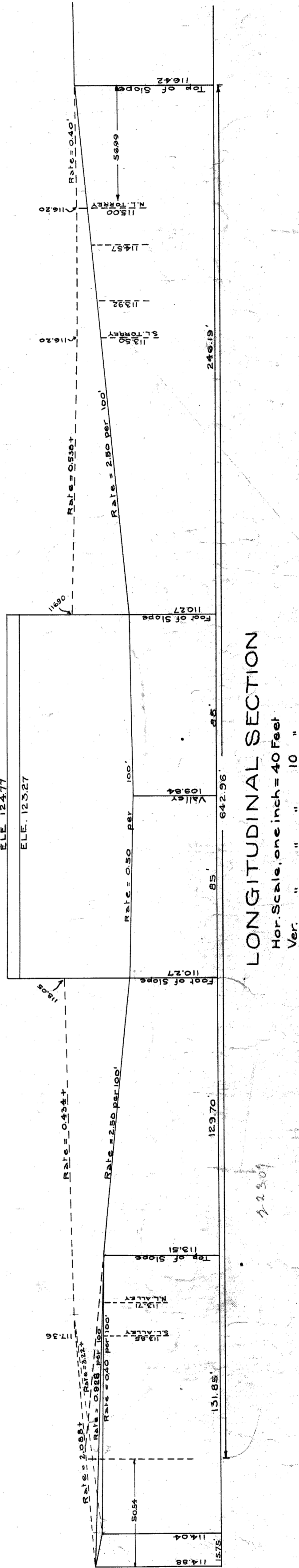
SECTION AT A-B  
Scale, one inch = 8 Feet.



PLAN  
Scale, one inch = 40 Feet.



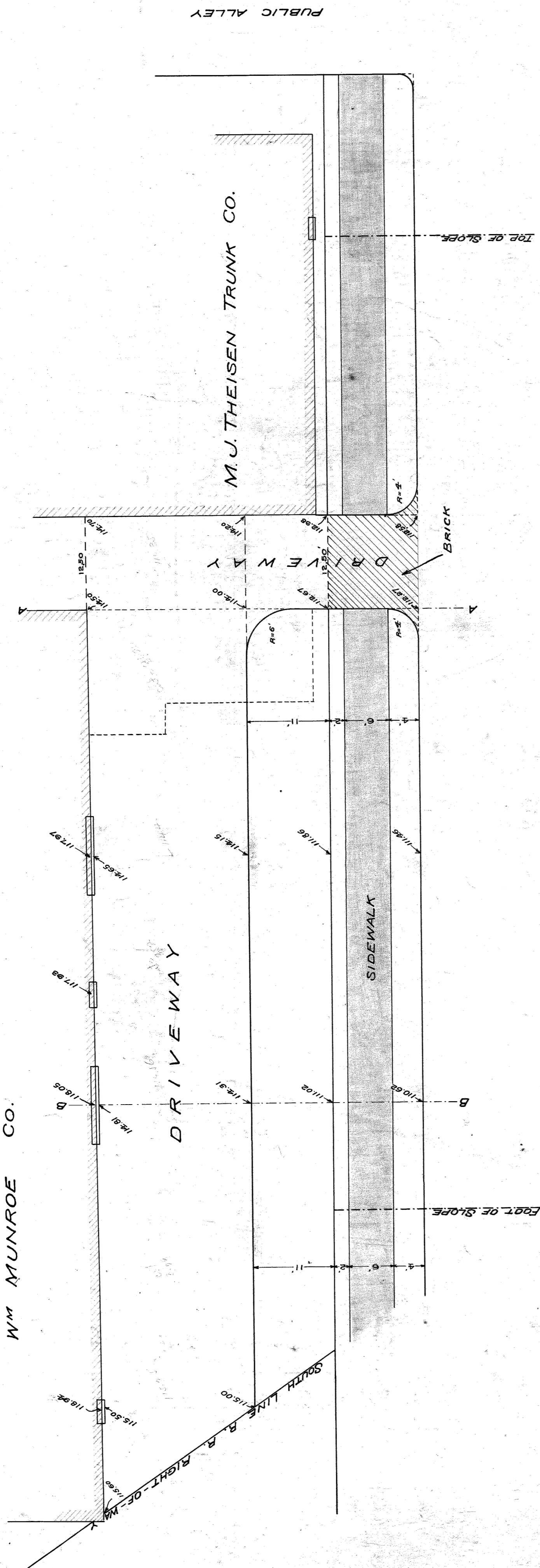
PROFILE OF LASALLE



LONGITUDINAL SECTION  
Hor. Scale, one inch = 40 Feet  
Ver. " " " 10 "

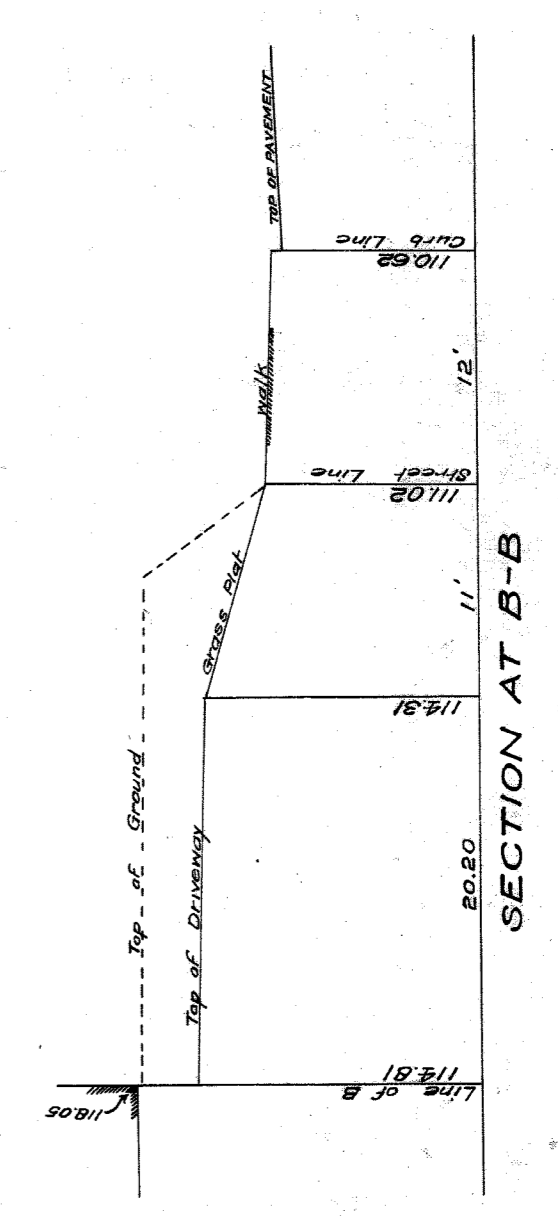
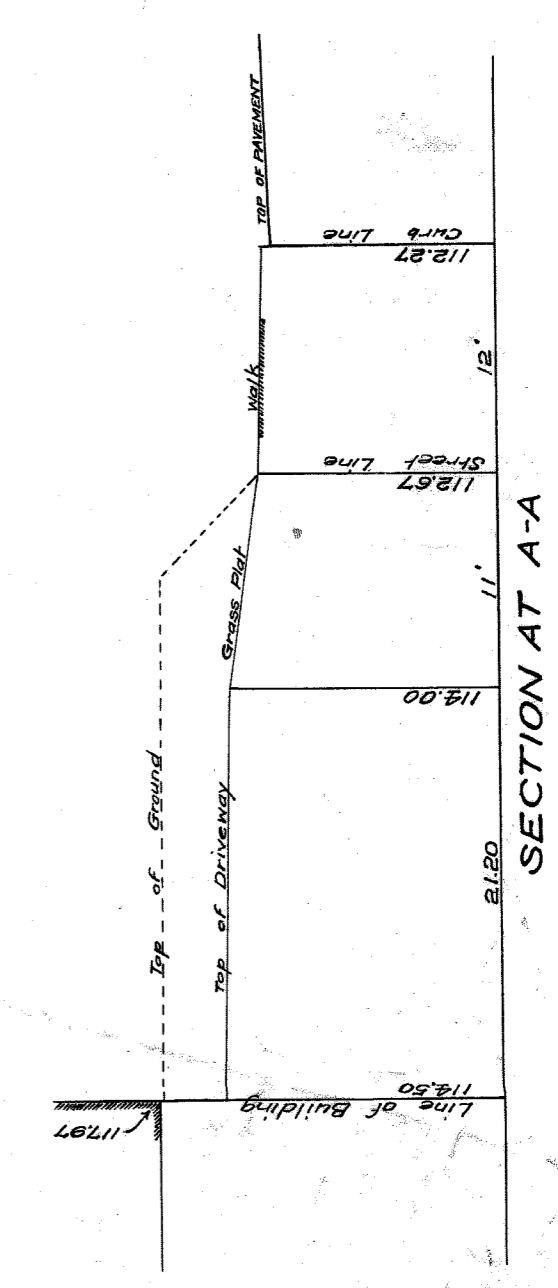
CITY ENGINEER'S OFFICE  
GRADE SURVEYING DIVISION  
Plan. A. Drawn 4-1-1908  
City Engineer's Office.

PLAN OF PROPOSED DRIVEWAY FOR  
**W.M. MUNROE CO. 5th**  
**M. J. THEISEN TRUNK CO.**  
 SCOTTEN AVENUE SUBWAY



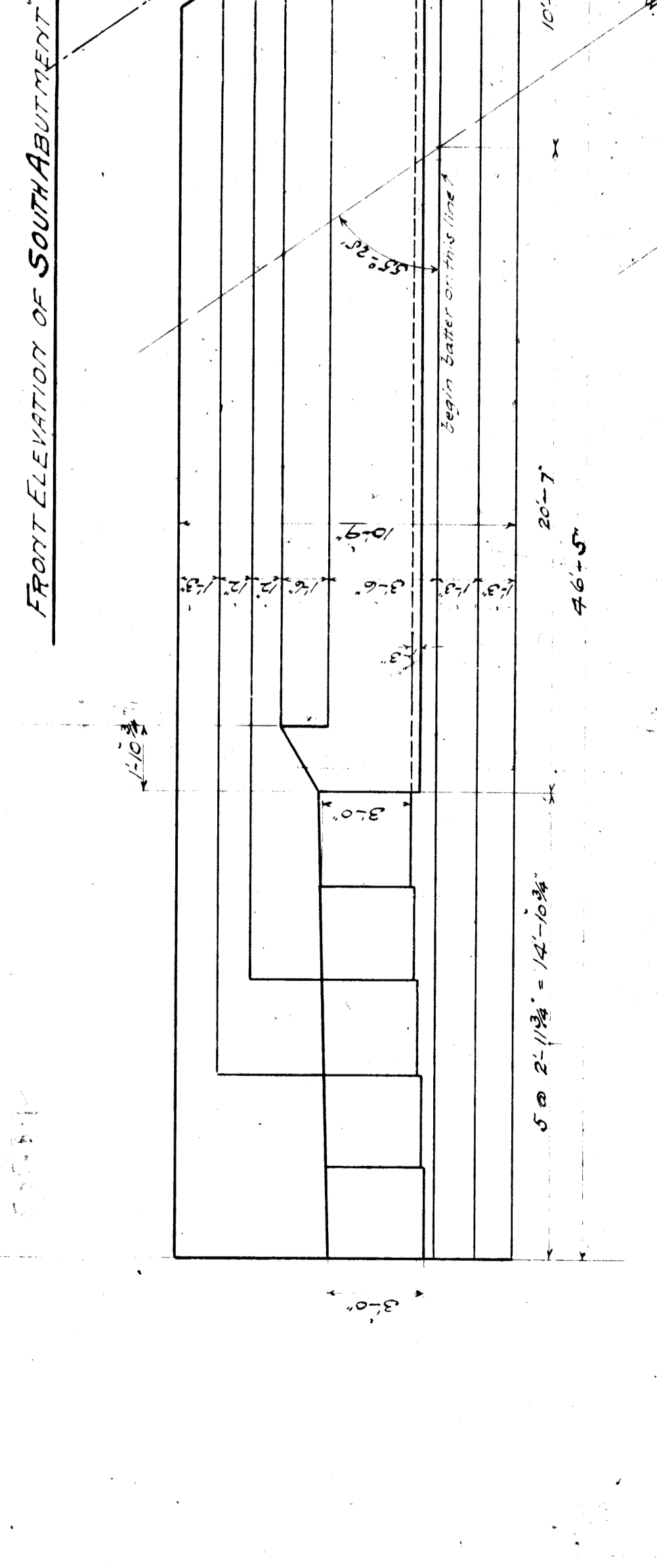
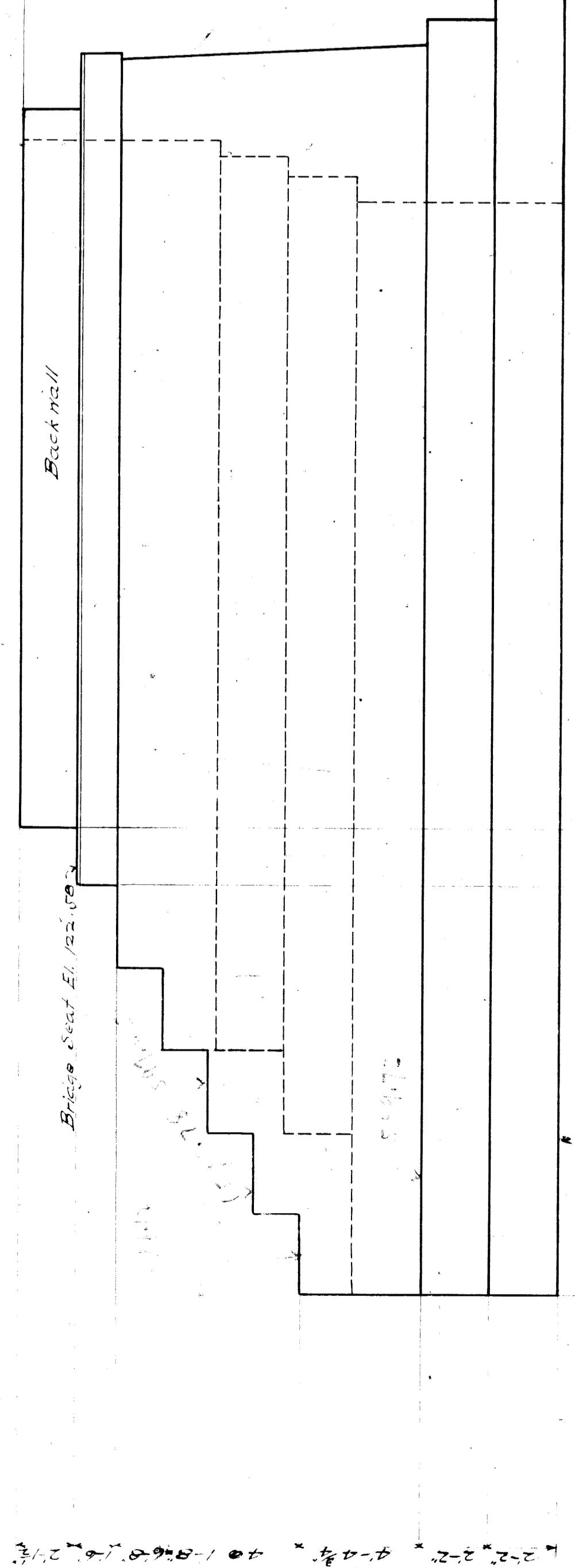
PROFILE SHOWING RELATIVE ELEVATIONS OF CURB, DRIVEWAY AND BUILDING

Station	Top of Driveway	Top of Building	Rate of Grade
112.81	112.81	112.81	0.00%
112.82	112.82	112.82	0.00%
112.83	112.83	112.83	0.00%
112.84	112.84	112.84	0.00%
112.85	112.85	112.85	0.00%
112.86	112.86	112.86	0.00%
112.87	112.87	112.87	0.00%
112.88	112.88	112.88	0.00%
112.89	112.89	112.89	0.00%
112.90	112.90	112.90	0.00%
112.91	112.91	112.91	0.00%
112.92	112.92	112.92	0.00%
112.93	112.93	112.93	0.00%
112.94	112.94	112.94	0.00%
112.95	112.95	112.95	0.00%
112.96	112.96	112.96	0.00%
112.97	112.97	112.97	0.00%
112.98	112.98	112.98	0.00%
112.99	112.99	112.99	0.00%
113.00	113.00	113.00	0.00%



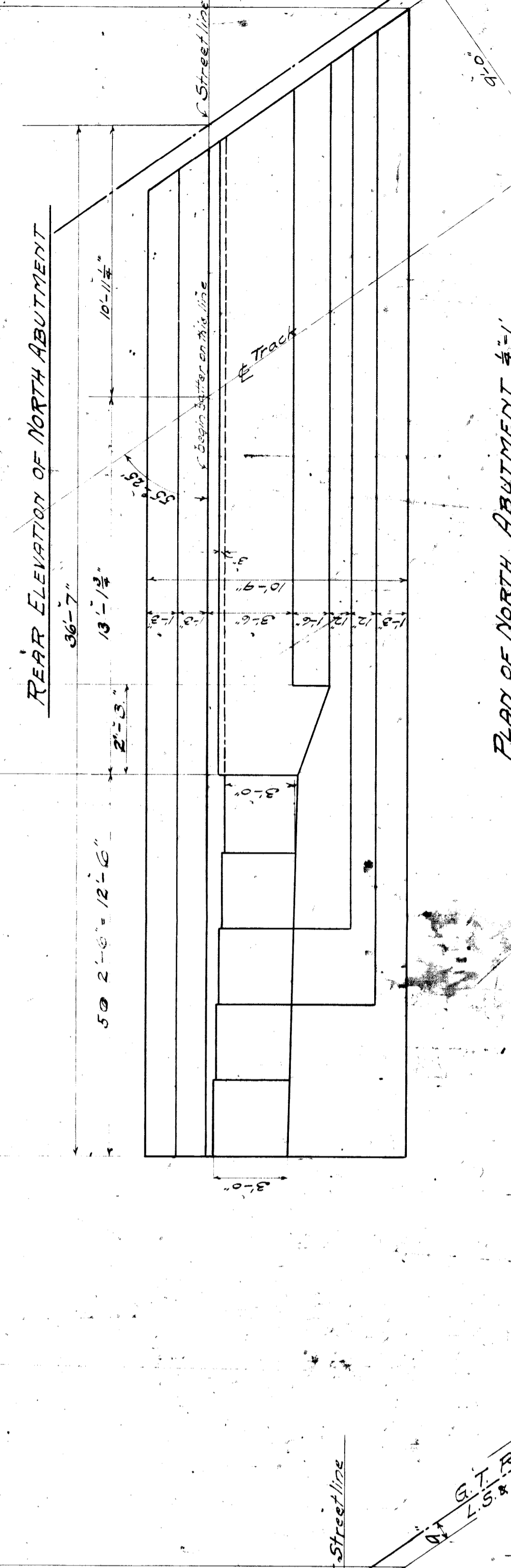
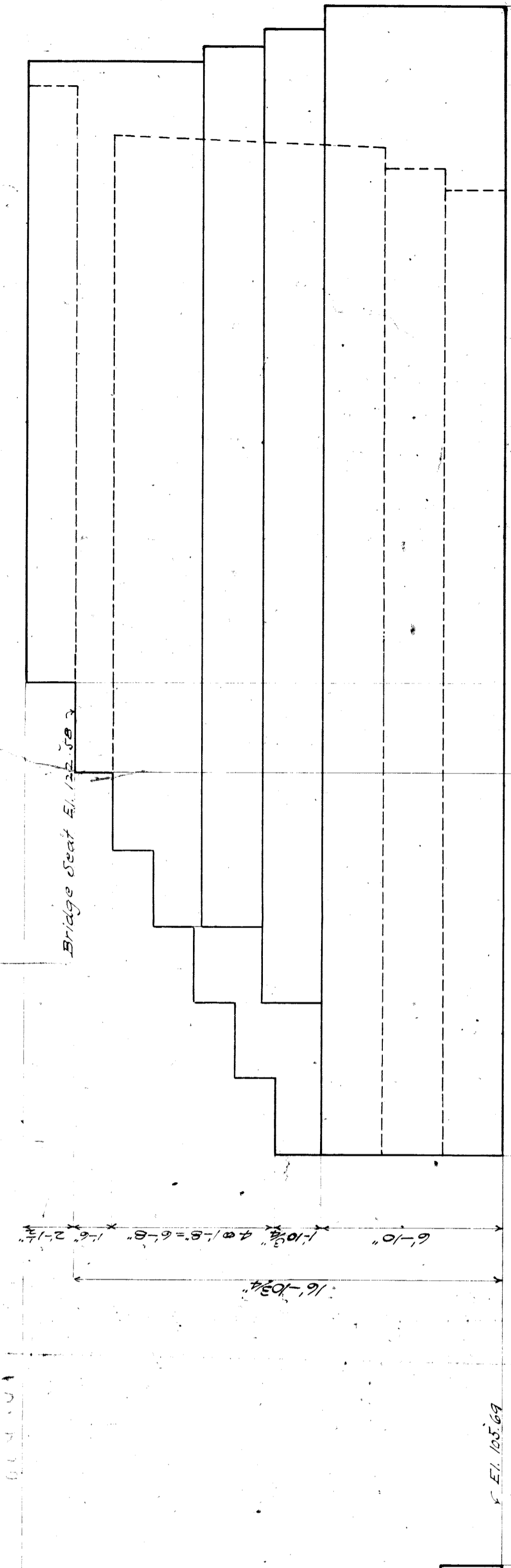
Amount of B.T. Estimate for Work = \$390.04  
 Curb Ex. = 56.5 @ .35 = \$19.78  
 Curb Ex. = 95 @ .60 = \$57.00  
 12' Sidewalk = 17 @ 3.00 = \$51.00  
 12' Sidewalk = 12 @ 1.00 = \$12.20  
 Balance = \$159.04

CITY ENGINEERS OFFICE  
 GRADE SEPARATION & SERVICES  
 Case A Drawn I N 18 c



FRONT ELEVATION OF SOUTH ABUTMENT

PLAN OF SOUTH ABUTMENT & PIERS #1-1'



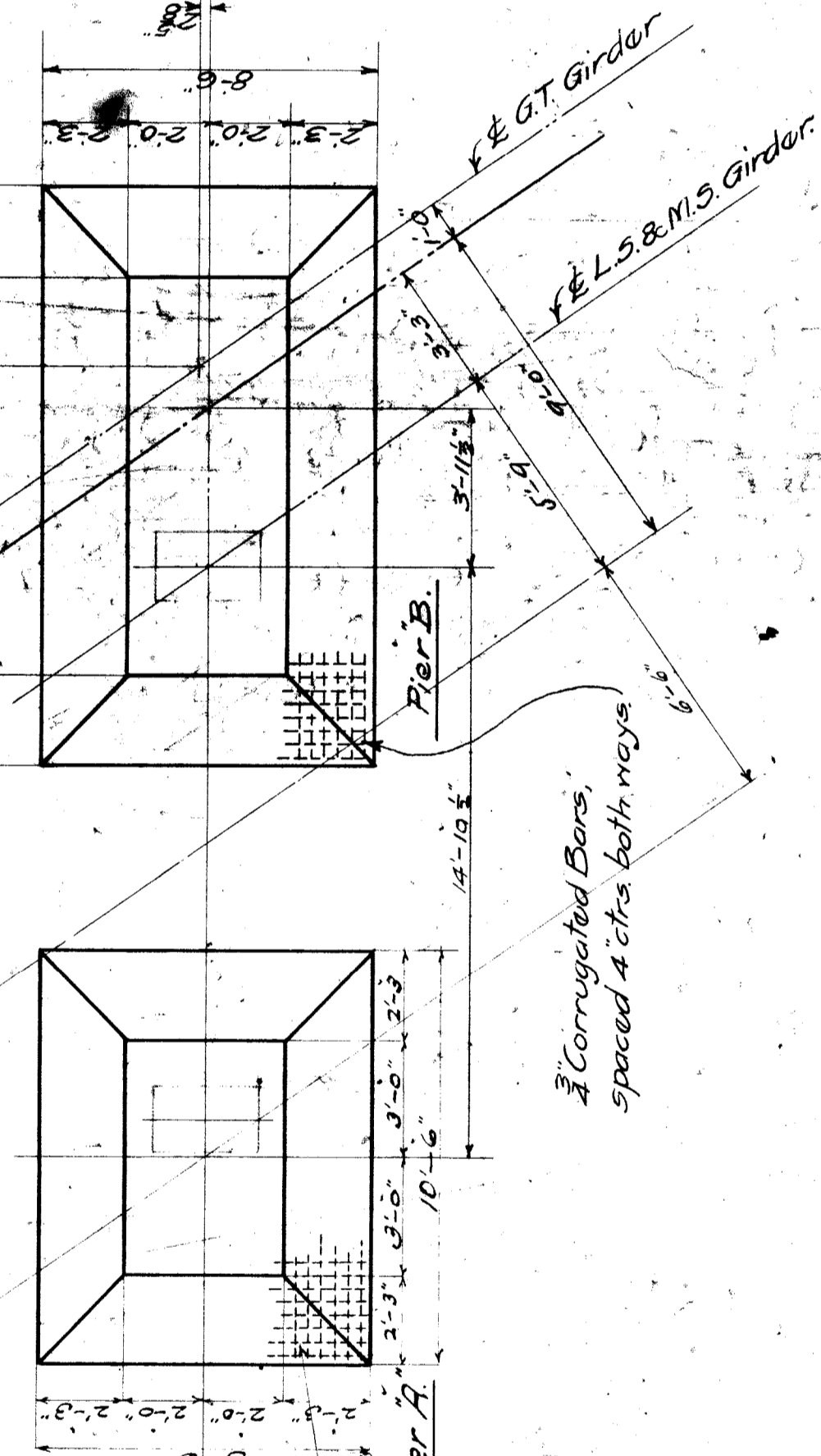
REAR ELEVATION OF NORTH ABUTMENT

PLAN OF NORTH ABUTMENT #1-1'

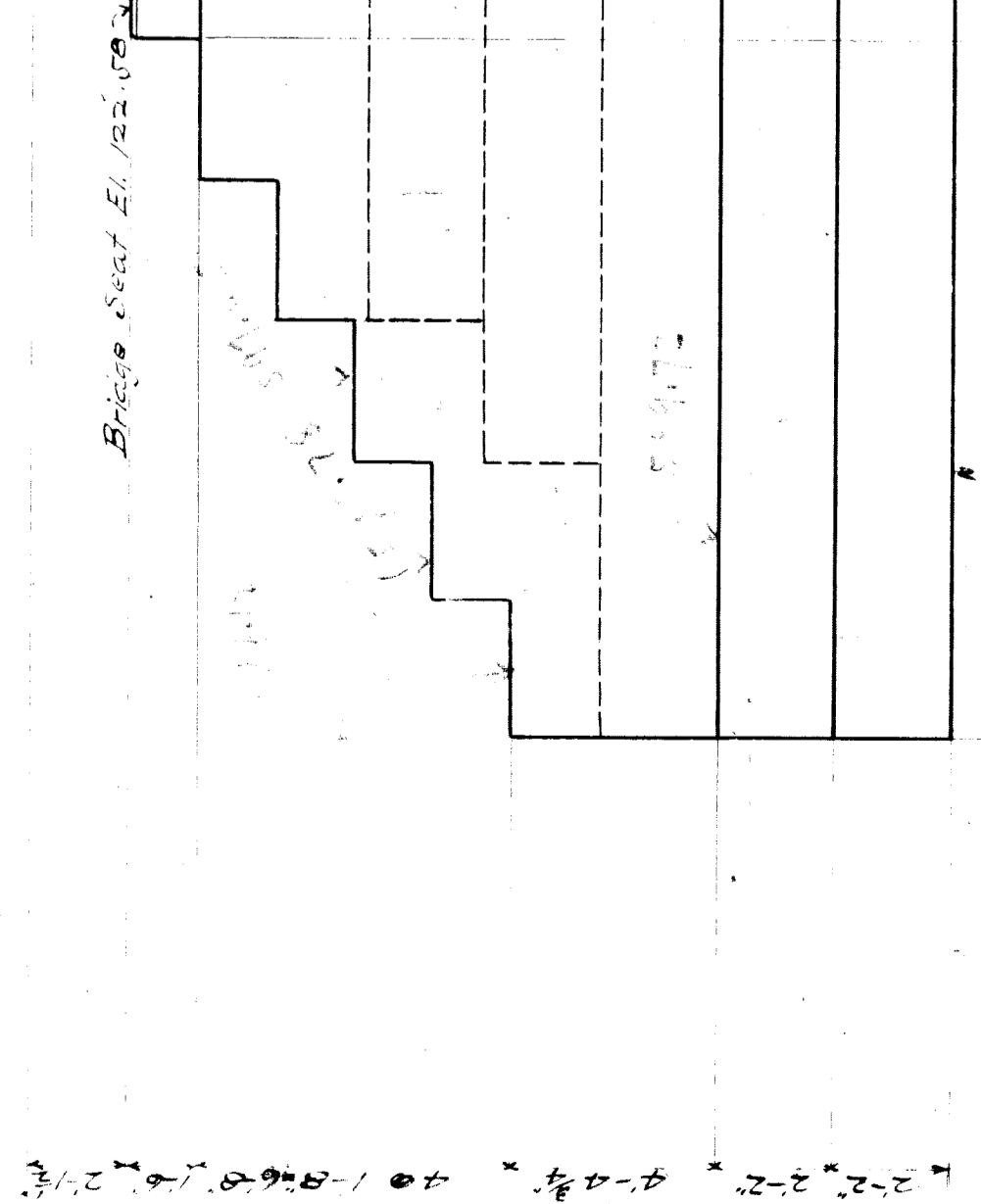
Note: Chamfer all exposed edges. All exposed surfaces to have a dense smooth & hard finish, non exposed surfaces to be free from a honey-combed appearance.

390 cu. yds. Concrete  
 mixture - 1:2 1/2 : 5 : 8 1/2 : 5  
 150 cu. yds. Sand  
 3.60 : 10 : 0

Steel  
 50 - #10 Cont. Bars 13-0  
 144 - #8 8-0  
 30 - #10 10-0



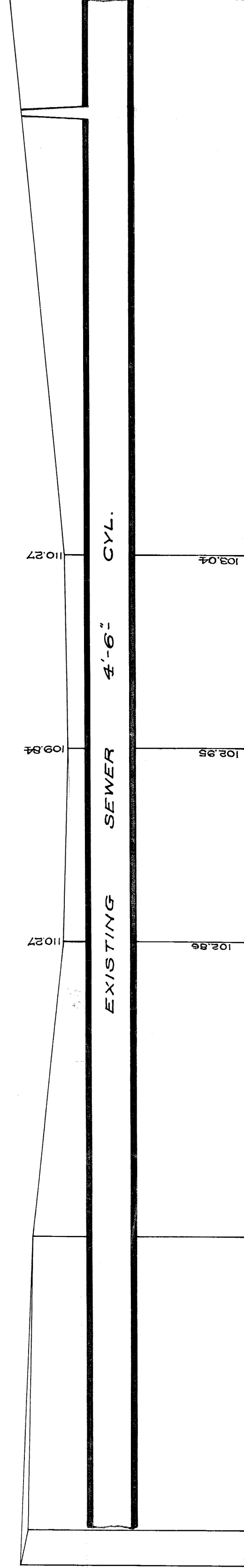
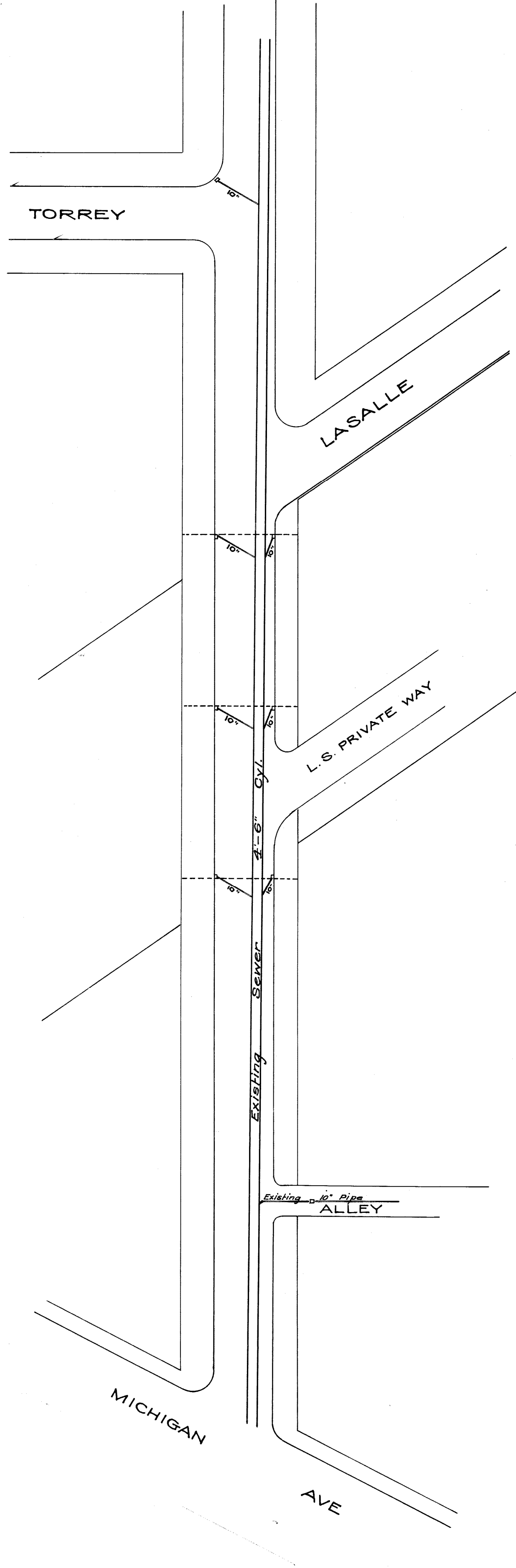
CROSS SECTION AT RIGHT ANGLES TO STREET #1-1'



GENERAL PLAN #1-1'

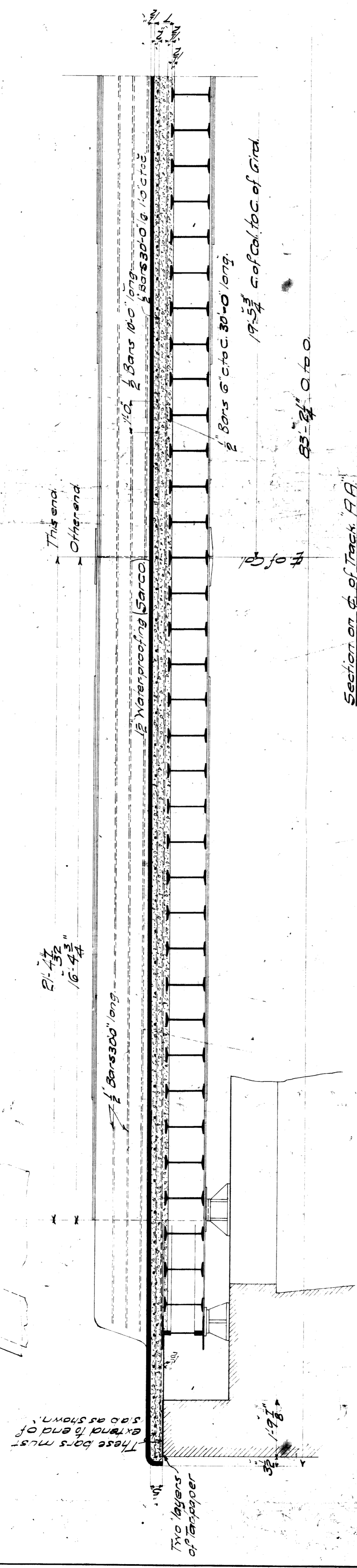
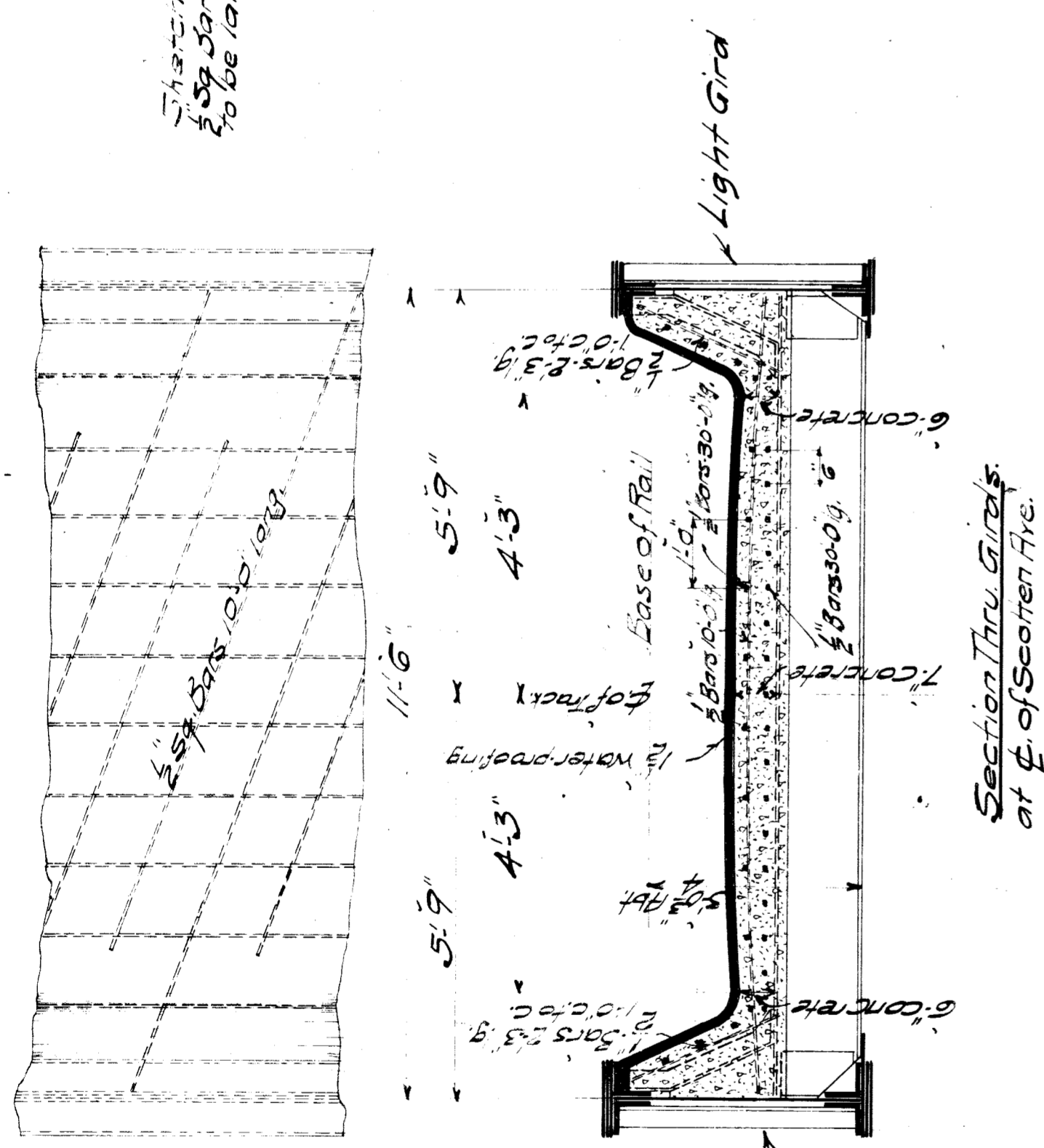
L.S. & M.S. Ry. Bridge Dept. S. Robinson, C.E.  
 Bridge No. Detroit Brackets  
 Over Scofield Avenue  
 Detroit Michigan  
 Masonry Plan  
 Sheet 1 of 1  
 Scale: 1/4" = 1'-0"  
 Revised 11/16/15  
 101-11-15  
 133-11-15  
 133-11-15

DRAINAGE PLAN  
FOR  
SCOTTEN AVE. SUBWAY  
NORTH OF MICHIGAN AVE.



CITY ENGINEER'S OFFICE  
STANDARD PLAN & SPECIFICATIONS  
Sheet A  
No. 108

These wing walls  
to be built in concrete



Material Order

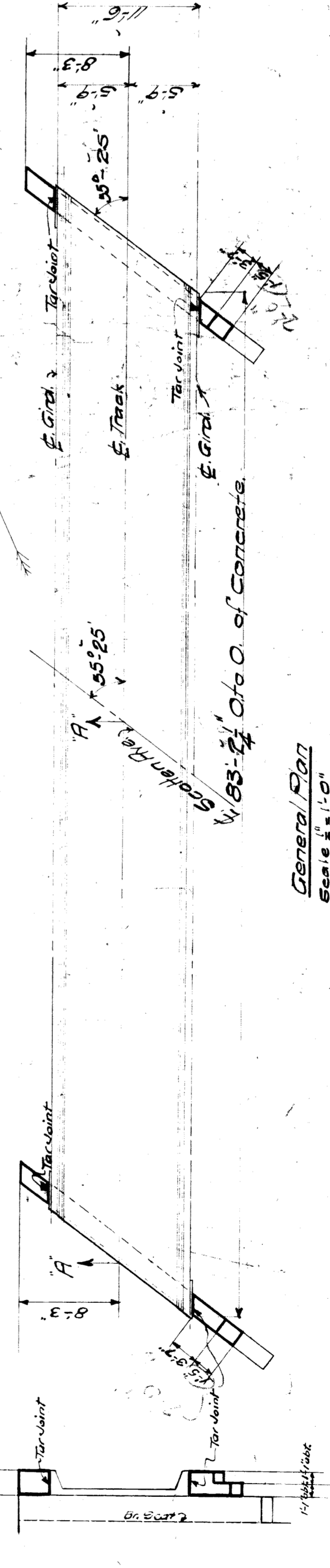
34 cu yds concrete  
1:2:4 mixture

18 -  $\frac{1}{2}$  Sq. Bars - 10'-0" long  
cut from 26 - 30'-0" long  
105  $\frac{1}{2}$  Sq. Bars - 30'-0" long  
cut from 17 - 24'-0" long  
165 - 1" - " - 2'-3" - " 3 20

63 Sacks cement  
15 cu yds sand  
30 - " - " stone

Total - 3660'

Lap all bars at least 40 times their least dia.  
Place transverse bars parallel to abutments  
and longitudinal bars parallel to tracks.  
1085 Sq. ft. Sarco  $\frac{1}{2}$  thick.  
Bars to be corrugated.



Bill of Concrete for Wing Walls  
on Parapet Walls.

2 cu yds concrete 1:3:6 mix.  
9 sacks cement  
1 cu yd sand  
2 cu yds stone.

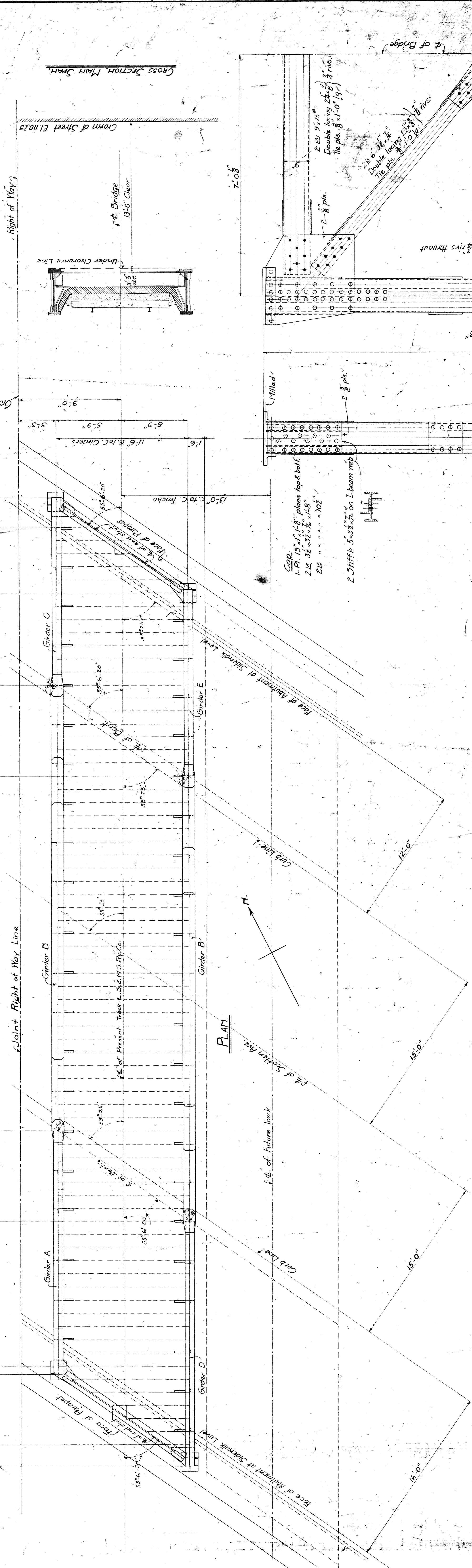
General Plan  
Scale 8" = 1'-0"

Revised 2/23/09

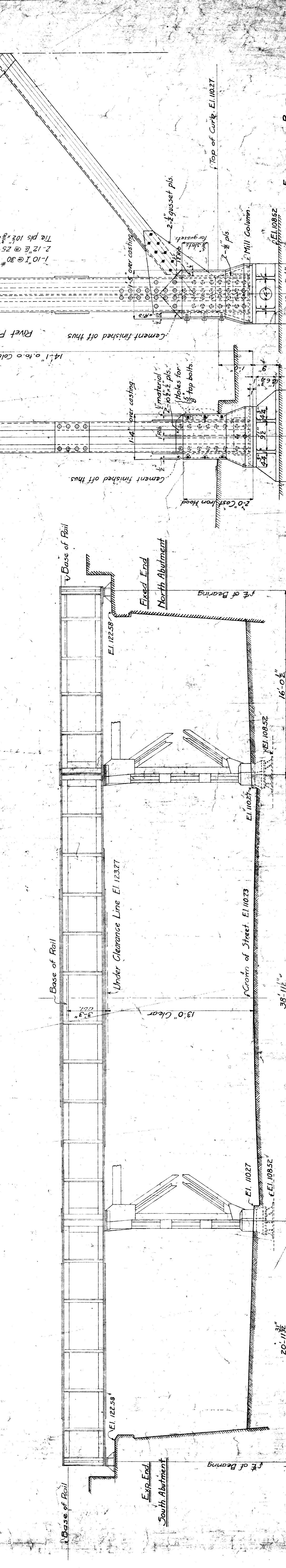
L. S. & M. S. RY. Bridge Dept. S. Rockwell, C.E.  
Bridge No. Detroit Branch  
Southfield Subway  
Detroit Michigan  
Concrete State  
Shop

Scales 1/4" = 1'-0" Jan. - 18. 1909 DRAWING BETTING  
Revised Aug. 12, 1912  
L. S. & M. S. RY. No. 428-6

**PLAN**



**ELEVATION**



**Track Notes:**  
 L.S. & M.S. 1902 Specifications except. Print for Shop Coat to be mixed in presence of Inspector and to be of the following proportions:  
 3/4 lb of Lamp Black  
 20 lbs of Red Lead  
 1 gal of Boiled, Linseed Oil.

**Paint Notes:**  
 L.S. & M.S. 1902 Specifications except. Print for Shop Coat to be mixed in presence of Inspector and to be of the following proportions:  
 3/4 lb of Lamp Black  
 20 lbs of Red Lead  
 1 gal of Boiled, Linseed Oil.

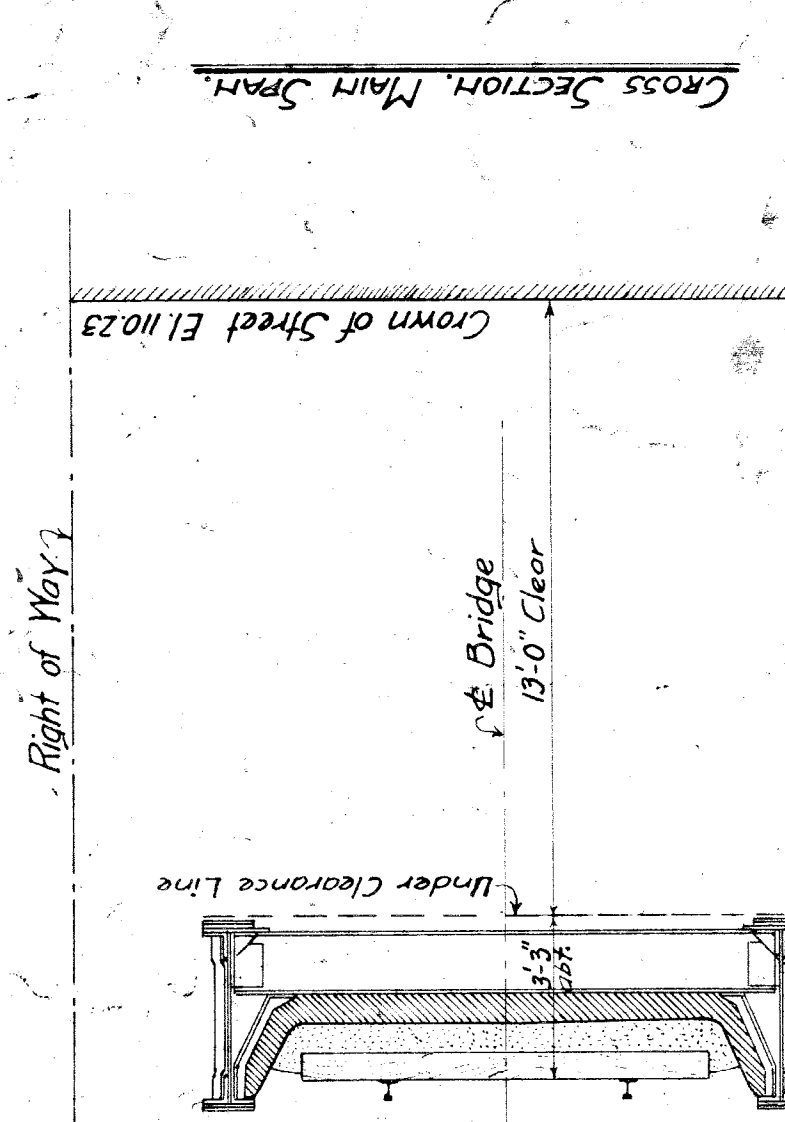
**General Notes:**  
 L.S. & M.S. Ry. Co's General Specifications of 1904 except as noted below. The following material shall be substituted or substituted and reamed to size while assembled. All material composing Girder Flanges, End Stiffeners and Web Plates where other-remained material is attached. Also Column Shafts where I-Beams and Channels connect directly to each other. Sub-drill all material over 3/4" thick except bearing and minor details. Field connections to be reamed to template as per specifications. Rivets 3/8" dia except as noted. Loading: Coopers Class E 40 60,000 Lbs Load for floor. Impact per centage 1.75 velocity in miles per hr = 50.

**ELEVATION OF BEIT:**  
 Scale 3/4" = 1'-0"

**Base:**  
 1 Base pl 20" x 10" Plane top & bott  
 2 "E 6x38 x 1/2" x 1'-5 1/2"  
 2 "E 6x38 x 1/2" x 1'-5 1/2"  
 2 "E 6x38 x 1/2" x 1'-5 1/2"

**Cols to Pedestals:**  
 4-1/2" bolts each with 2-8 washers  
 Pedestals to Masonry  
 12-18" bolts 20" dia  
 1-8" washers  
 Cast steel pedestals to be planned top & bott  
 3/8" Sheet lead under all pedestals

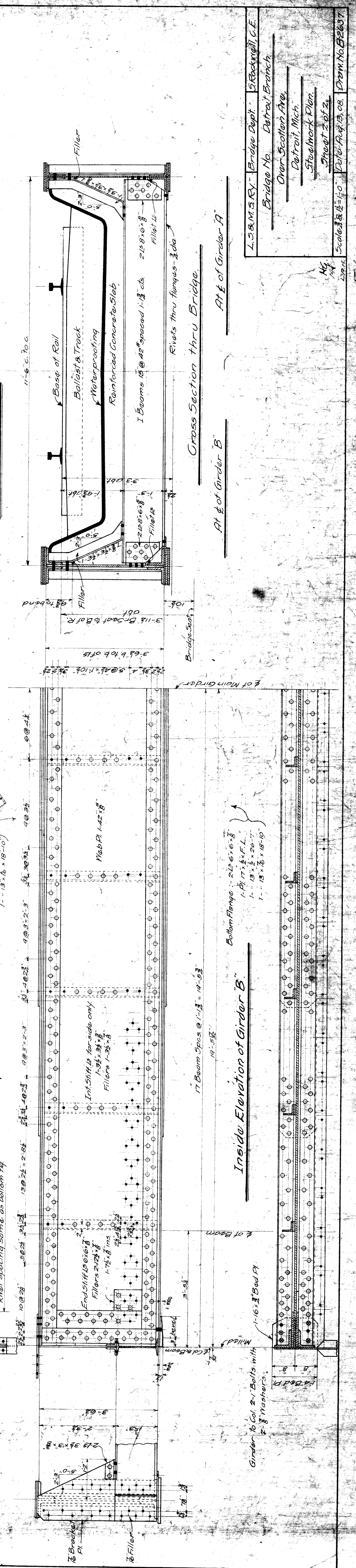
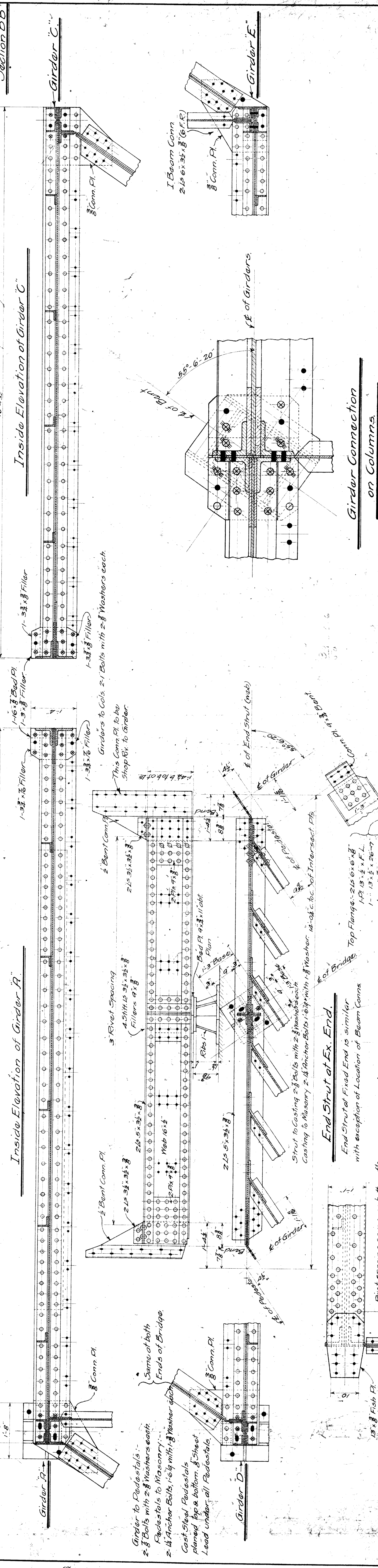
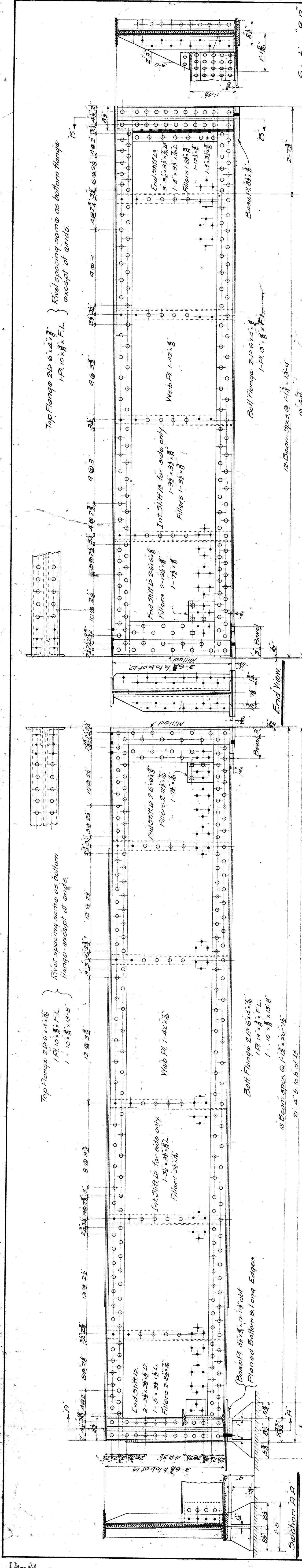
**Cast iron heads to be assembled on to Col bases at shops to insure fit**



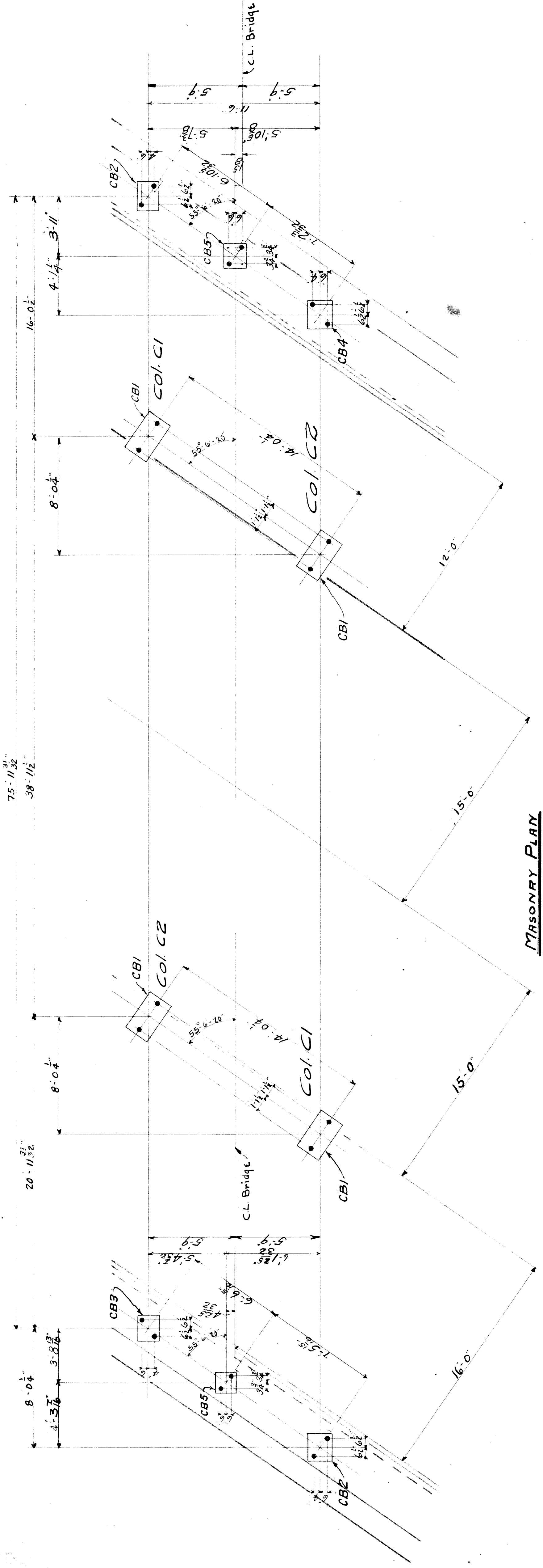
**Cross Section Main Span**

**L.S. & M.S. Ry. Bridge Dept. S. Rockwell, C.E.**  
 Bridge No. Detroit Branch  
 Scotten Ave. Subway  
 Detroit, Michigan  
 Steelwork Plan  
 Sheet 1 of 2  
 Scale as shown  
 Aug 28, 08  
 Draw No. BE637

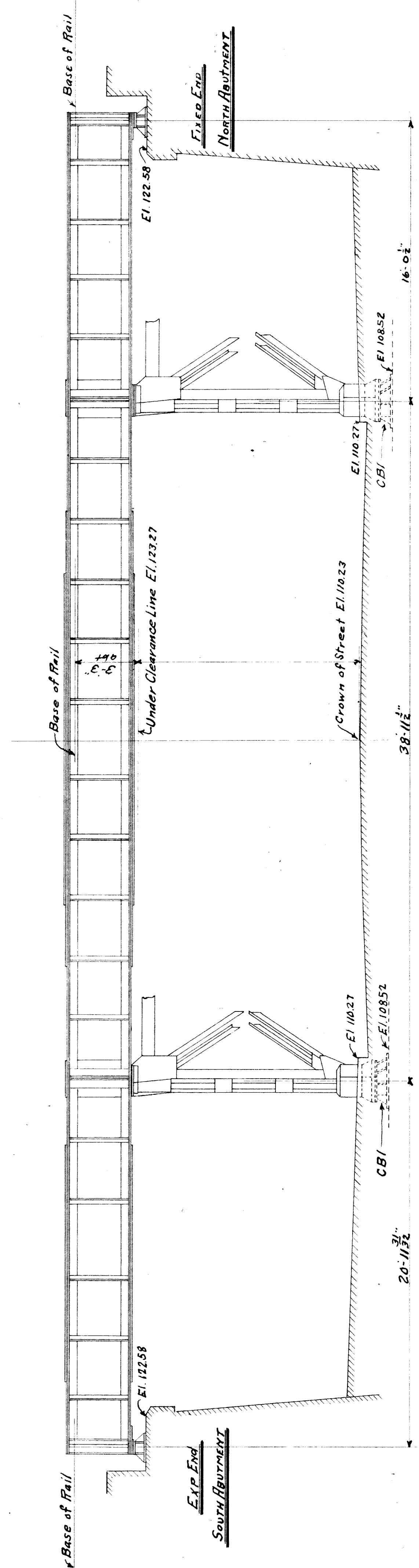
File **X128-97**



L. S. M. S. Ry. Bridge Dept. Brockwell, C.E.  
Bridge No. Detroit Branch  
Over Scation Ave.  
Detroit, Mich.  
Structural Plan  
Sheet 3 of 3  
Date: Aug 13, 08. Draw No. B2637  
Scale: 3/4" = 1'-0"



MASONRY PLAN

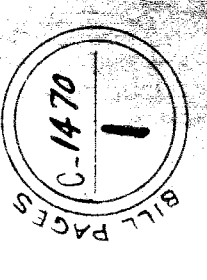


SIDE ELEVATION

Faint Note:  
 LS & MS 1904 Specifications except  
 Paint for Shop Coat to be mixed in presence  
 of Inspector and to be of the following  
 proportions  
 2 lb of Lamp Black  
 25 lbs of Red Lead  
 1 gal of Boiled Linseed Oil

Bridge over Scotten Avenue  
 Detroit Mich. Detroit Branch L.S. & M.S.  
 Masonry Plan

RIVETS      DIAM.      UNLESS OTHERWISE NOTED.  
 OPEN HOLES      DIAM.      UNLESS OTHERWISE NOTED.  
 MADE BY W.A.M. CHECKED BY      DATE 11-14-18  
 FORT PITT BRIDGE WORKS,  
 CANONSBURG, PENNA.



APPROVED THE  
 BY

Approved by  
 S. M. ...  
 11-14-18  
 11-14-18  
 11-14-18