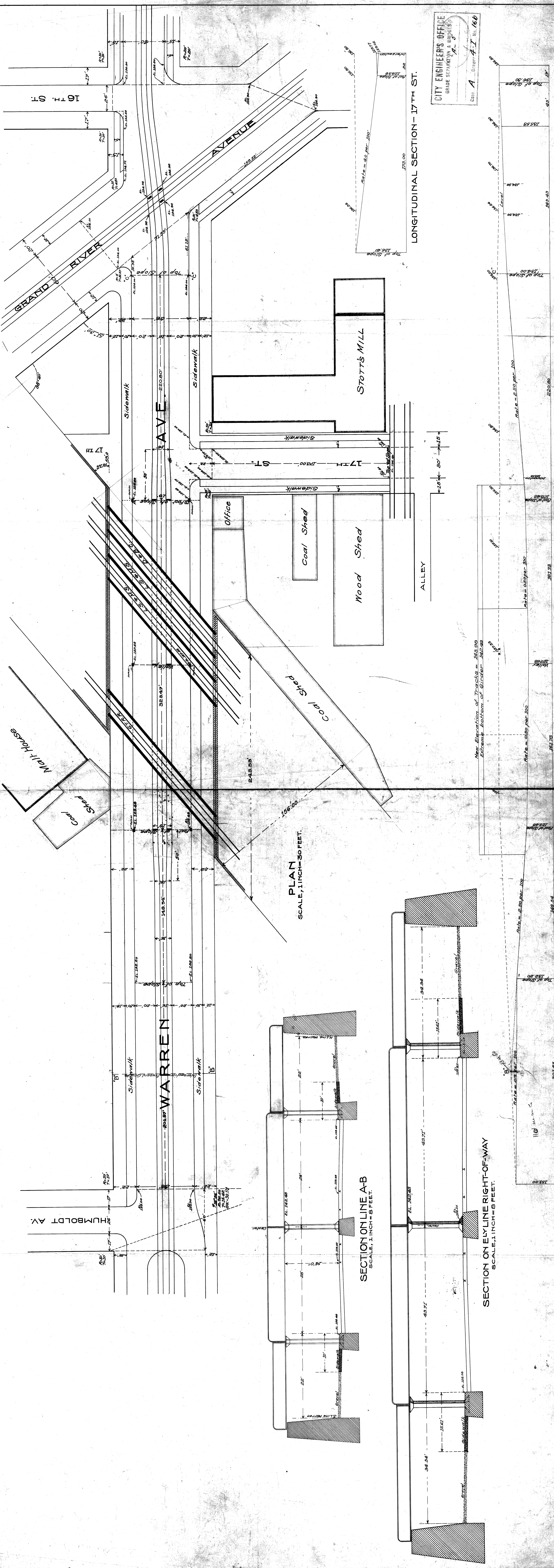


WARREN AVE. SUBWAY
AT CROSSING OF
GRAND TRUNK, L.S. & M.S. AND D. & B. C. R. R.'S.



PLAN
SCALE, 1 INCH = 30 FEET.

SECTION ON LINE A-B
SCALE, 1 INCH = 8 FEET.

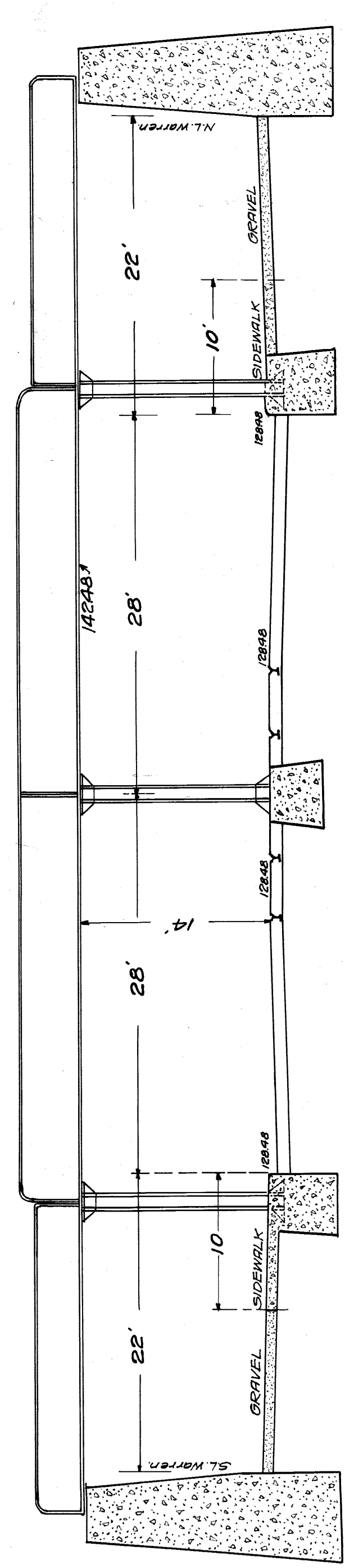
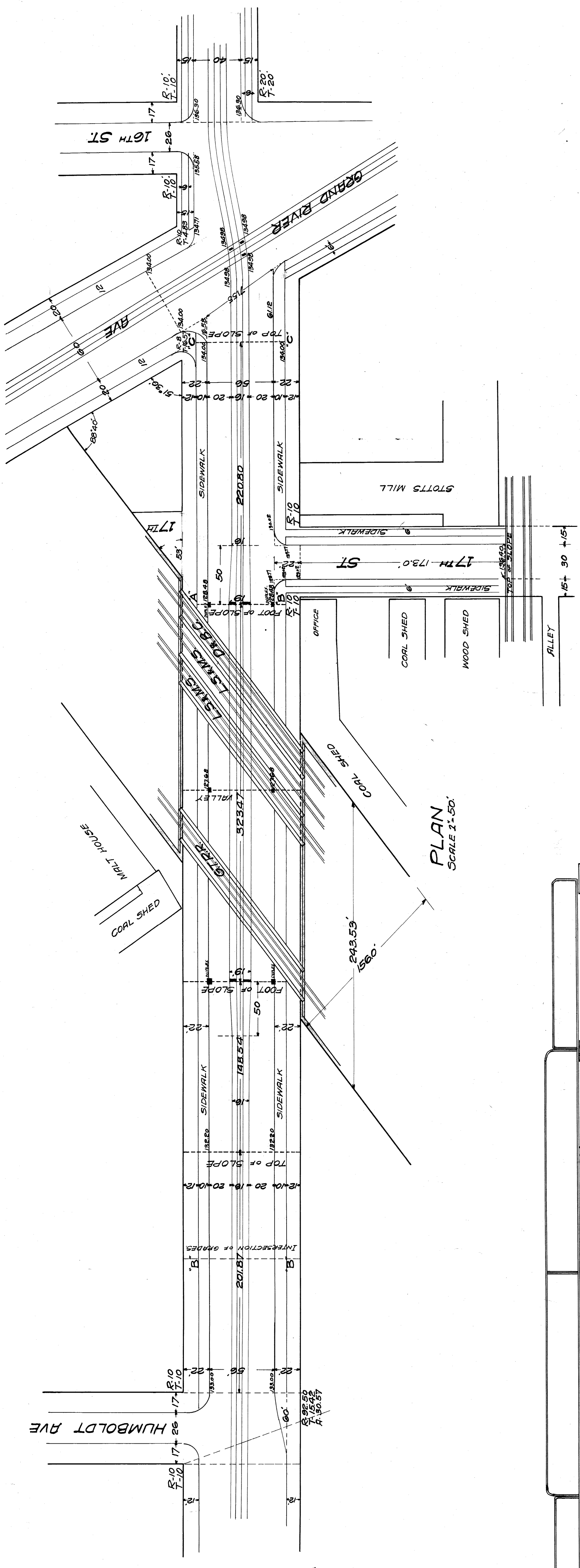
SECTION ON ELYLINE RIGHT-OF-WAY
SCALE, 1 INCH = 8 FEET.

CITY ENGINEERS' OFFICE
 GRADE SEPARATION & BRIDGES
 Class A Drawing A-1 No. 166

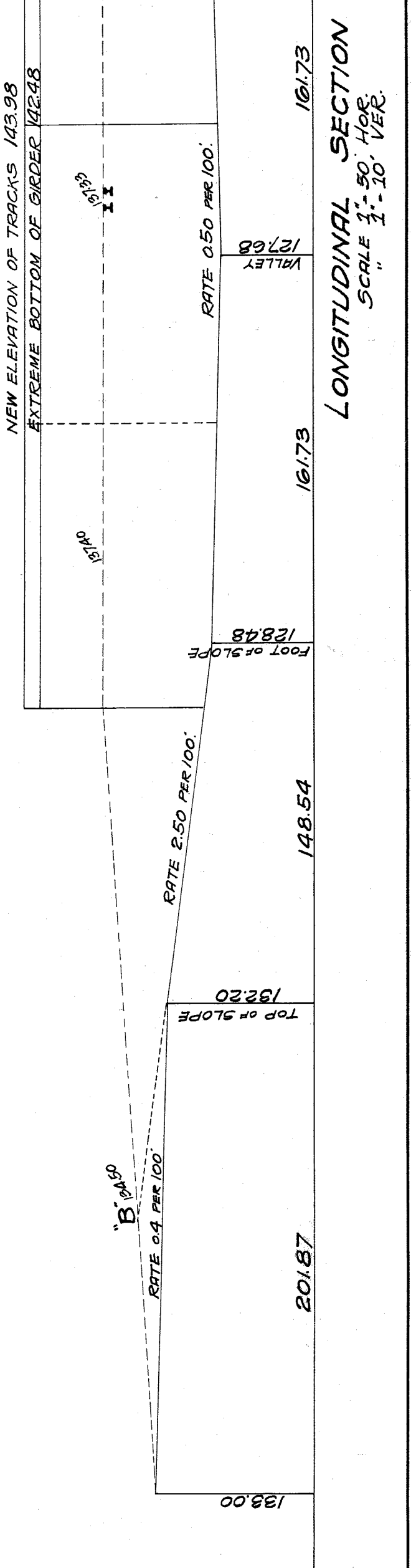
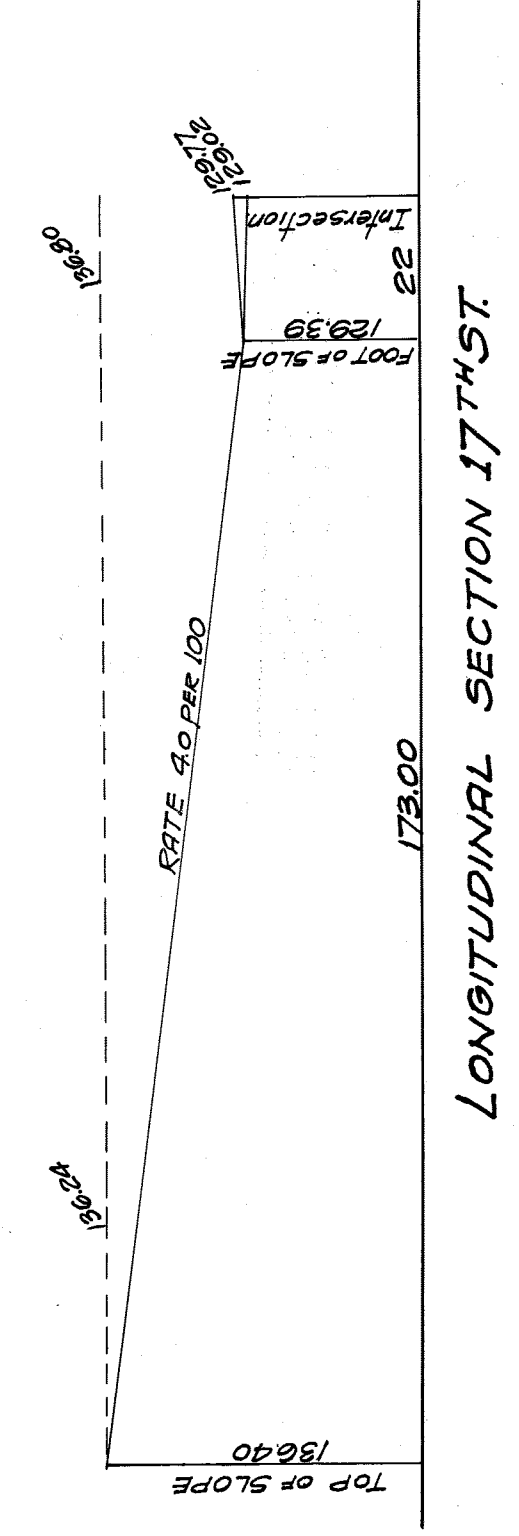
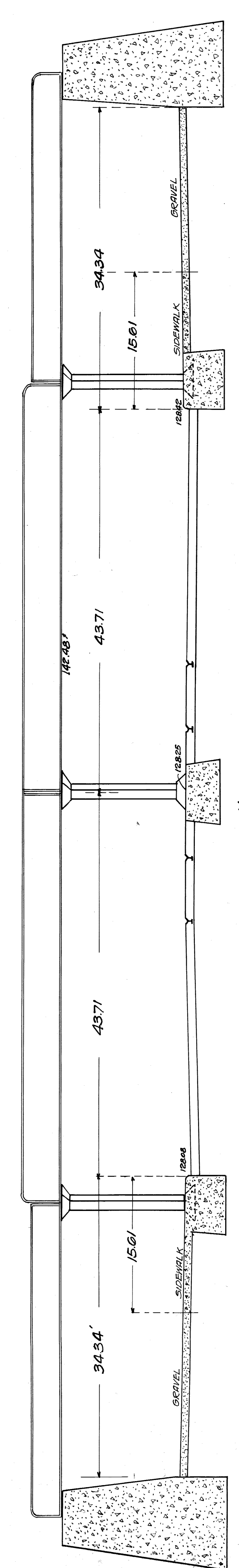
LONGITUDINAL SECTION
 HOR. SCALE, ONE INCH = 50 FEET
 VER. SCALE, ONE INCH = 10 FEET

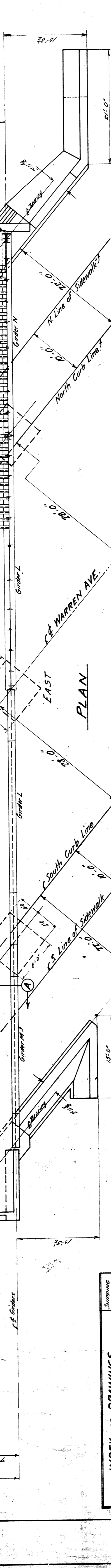
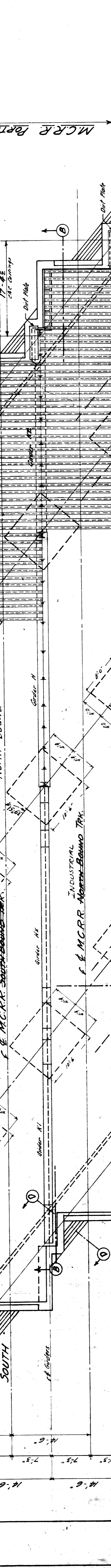
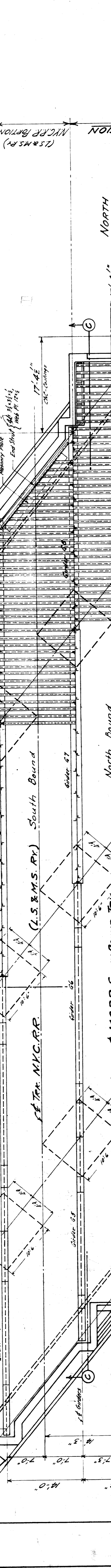
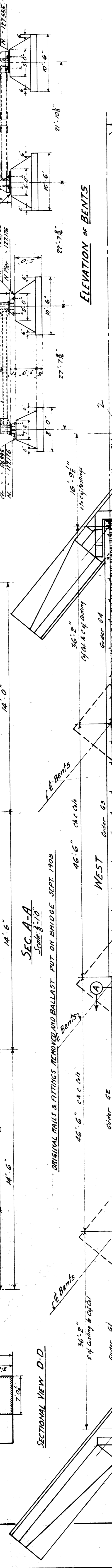
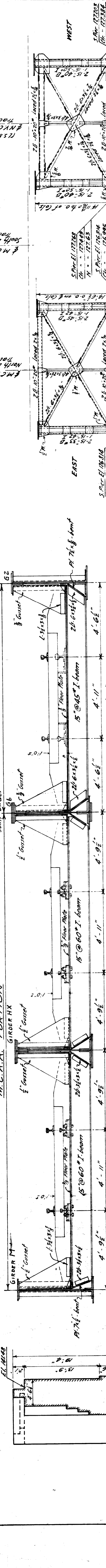
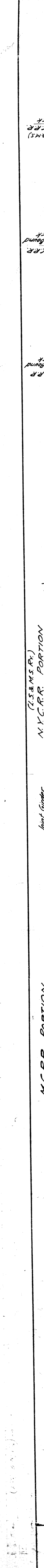
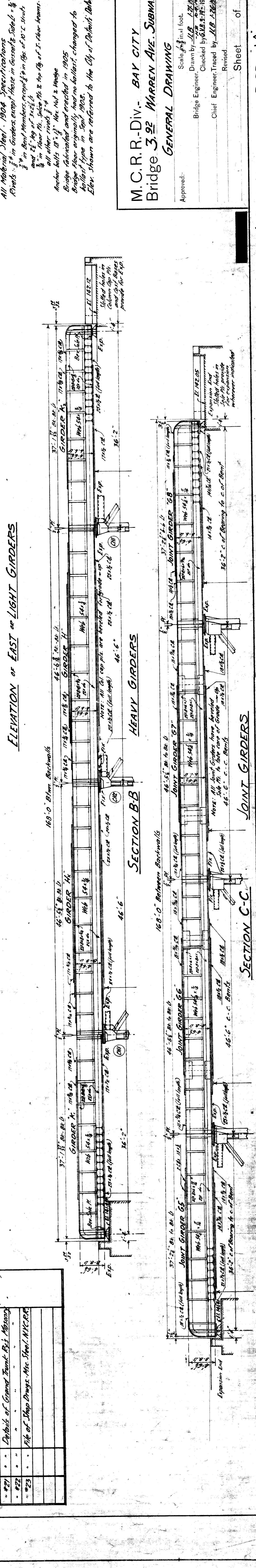
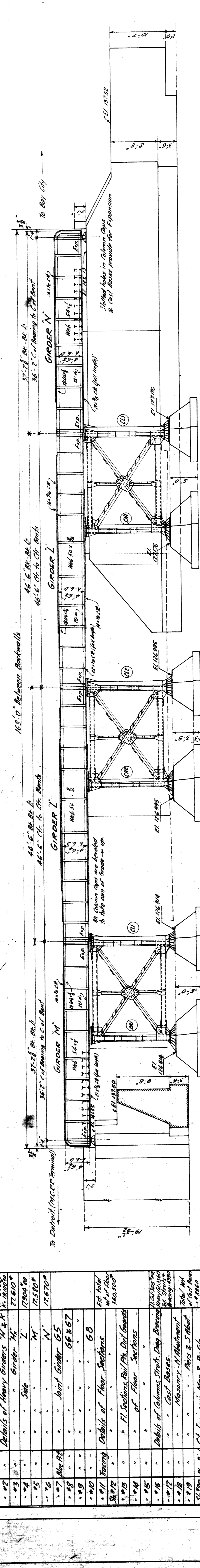
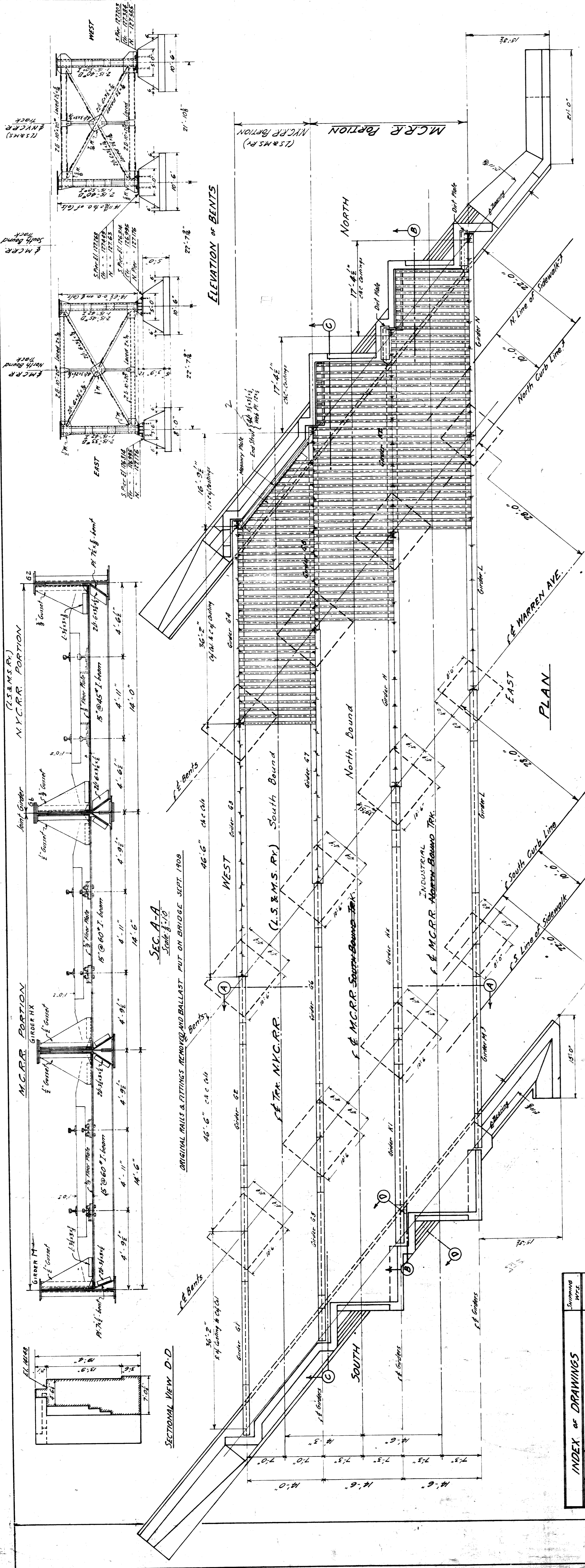
CITY ENGINEERS' OFFICE
 FEB. 1, 1904

File XUVI 71



**WARREN AVE. SUBWAY
AT CROSSING OF
GRAND TRUNK, L.S. & M.S. AND D. & B.C.R.R.'S.**
CITY ENGINEERS OFFICE
THIS DRAWING TRACED FROM ORIGINAL.





Sheet No.	Tracing	Drawings	W.C.S.
101	Working Diagram		
102	Details of Heavy Girders H & K	H-27800	
103	Details of Girder H	H-27810	
104	Side	H-27820	
105	Joint Girder G5	G5-17000	
106	Joint Girder G6	G6-17000	
107	Joint Girder G7	G7-17000	
108	Joint Girder G8	G8-17000	
109	Joint Girder G9	G9-17000	
110	Joint Girder G10	G10-17000	
111	Joint Girder G11	G11-17000	
112	Details of Floor Sections		
113	Details of Floor Sections		
114	Details of Floor Sections		
115	Details of Floor Sections		
116	Details of Columns, Brackets, Drop Beams, Cast Beams, Masonry Attachments		
117	Details of Columns, Brackets, Drop Beams, Cast Beams, Masonry Attachments		
118	Details of Columns, Brackets, Drop Beams, Cast Beams, Masonry Attachments		
119	Details of Columns, Brackets, Drop Beams, Cast Beams, Masonry Attachments		
120	Details of Columns, Brackets, Drop Beams, Cast Beams, Masonry Attachments		
121	Details of Columns, Brackets, Drop Beams, Cast Beams, Masonry Attachments		
122	Details of Columns, Brackets, Drop Beams, Cast Beams, Masonry Attachments		
123	File of Shop Drawings, Misc. Steel, M.C.R.R.		

INDEX OF DRAWINGS

Scale: 1/4" = 1'-0"

Bridge Engineer: Checked by J.B. 12-20-10

Chief Engineer: Traced by J.B. 12-20-10

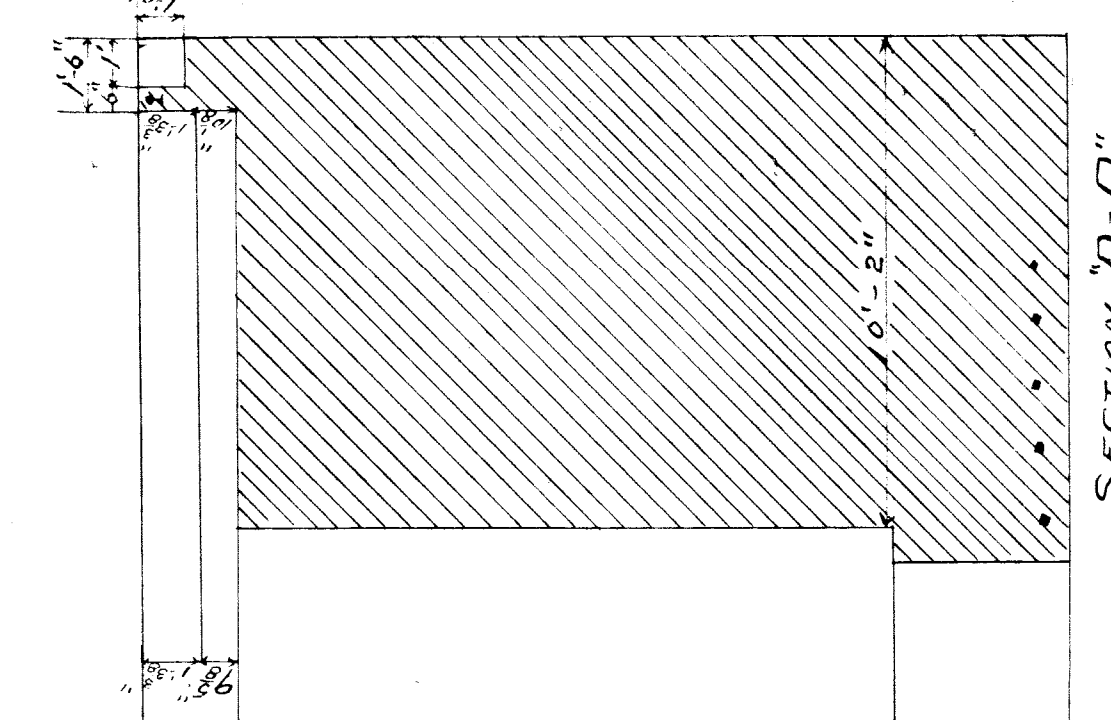
Revised

Sheet of

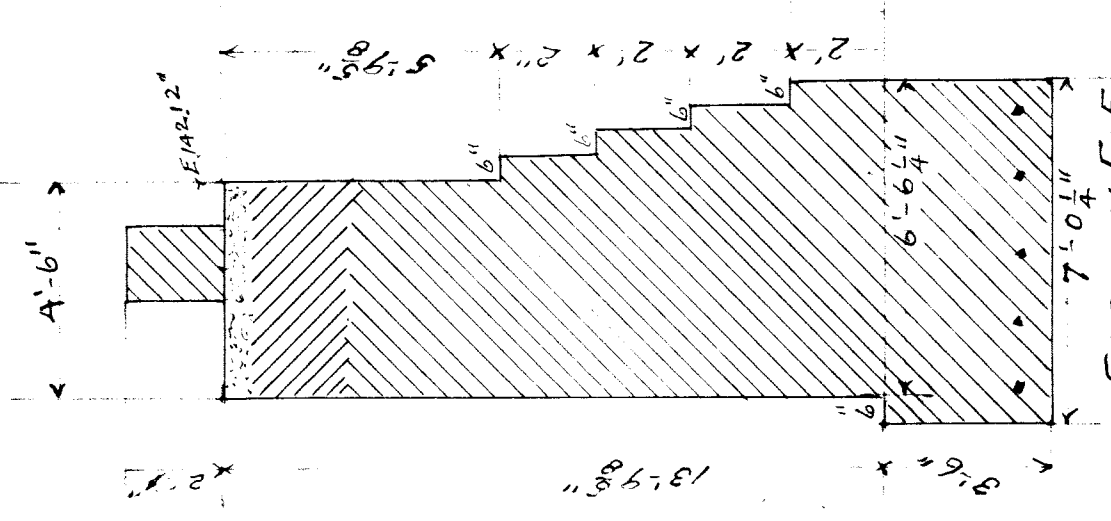
M.C.R.R. DIV. - BAY CITY
Bridge 3.92 WARREN AVE. SUBWAY
GENERAL DRAWING

All Material Steel, 1908 Specifications
 Rivets: 3/4" in Girders except those in Girders 5, 6, 7 & 8
 5/8" in Bolt Members except in the case of 10" dia. bolts
 3/4" in floor the, where 1/2" & 3/4" dia. of I. floor beams
 all other rivets 3/4"

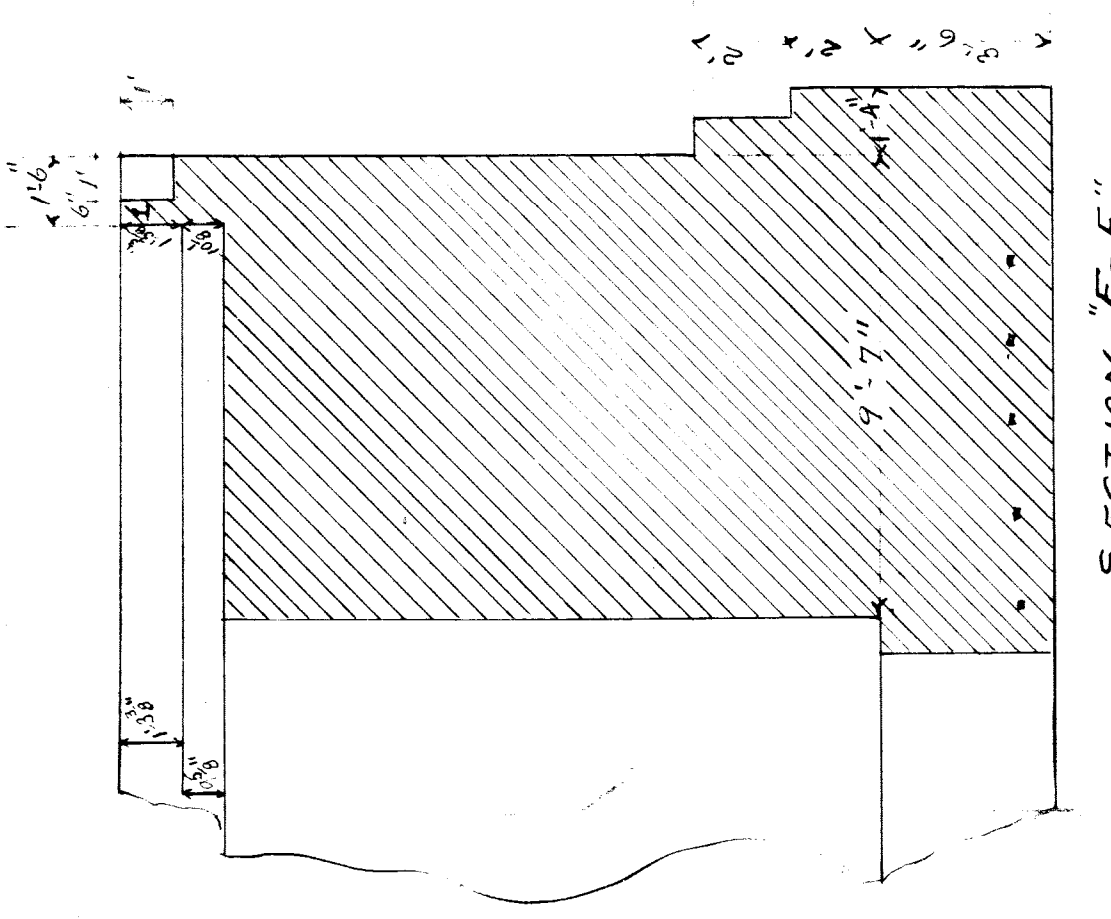
Anchor bolts 18" dia. 1/2" dia. nut & washer
 Bridge fabricated and erected in 1905
 Bridge floor originally had no ballast, changed to
 ballast in Sept. 1908
 Else shown are referred to the City of Detroit within



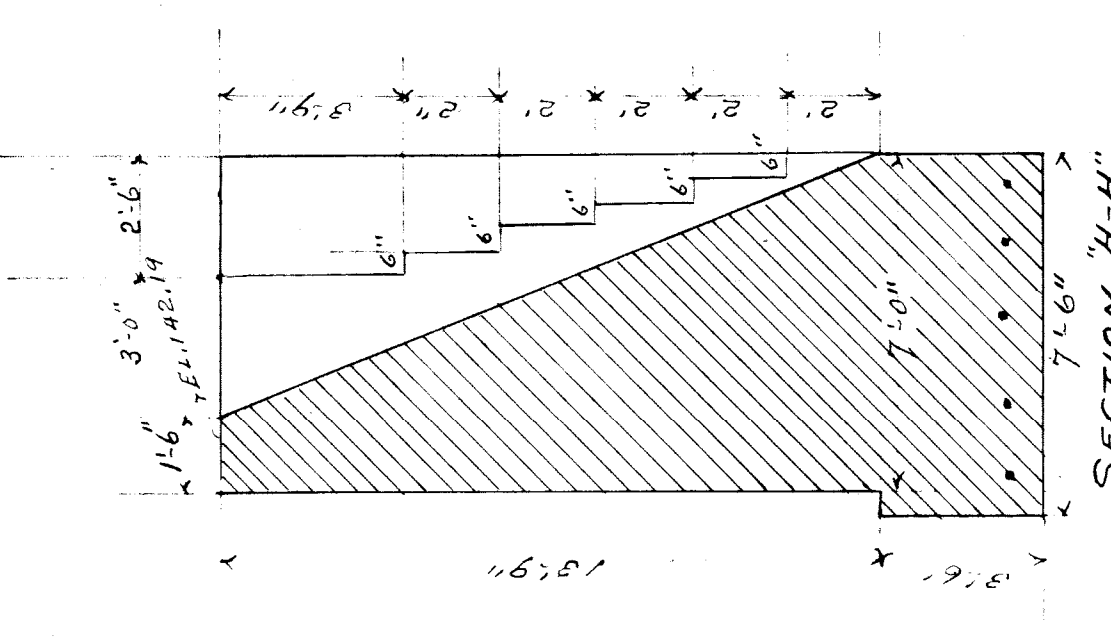
SECTION "D-D"



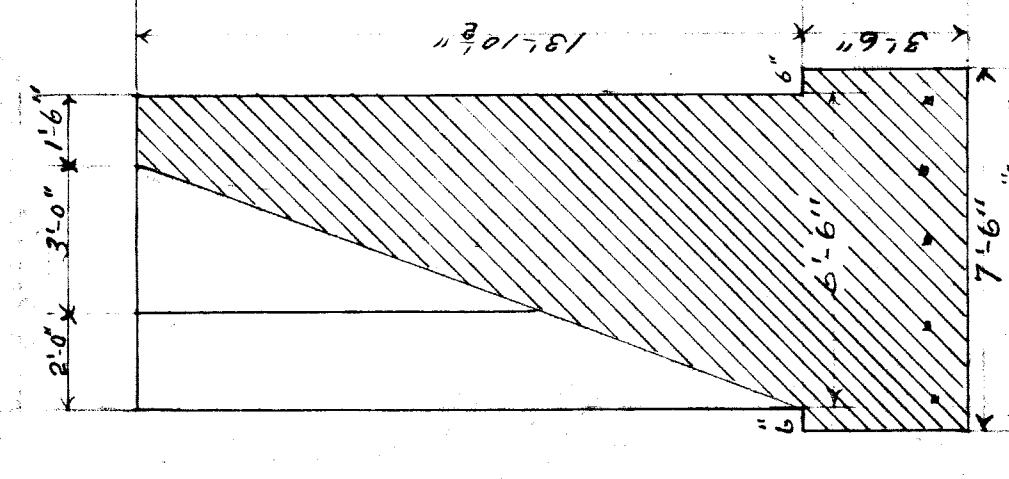
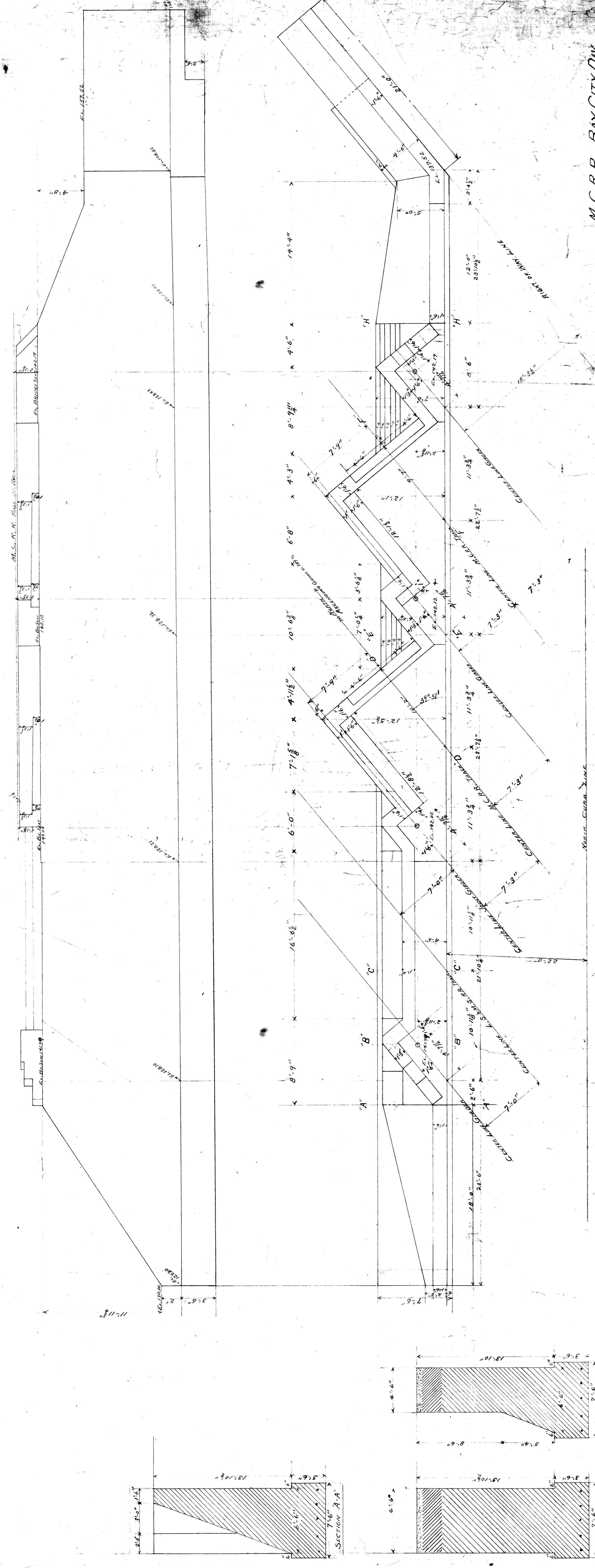
SECTION "E-E"



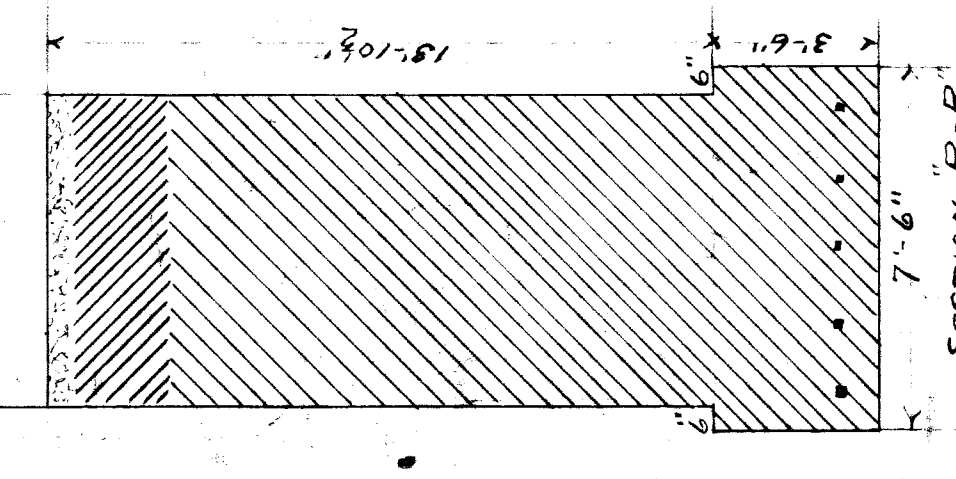
SECTION "F-F"



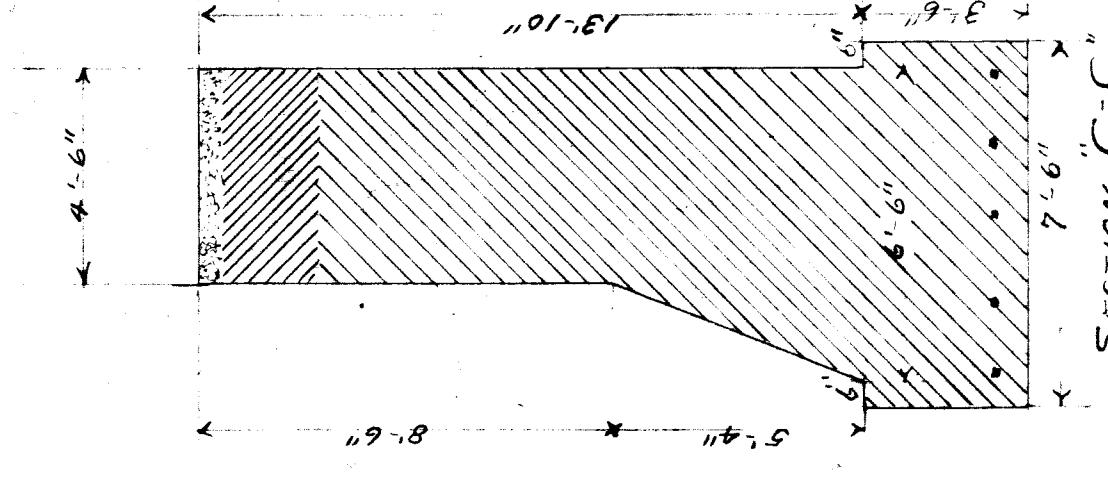
SECTION "H-H"



SECTION "A-A"

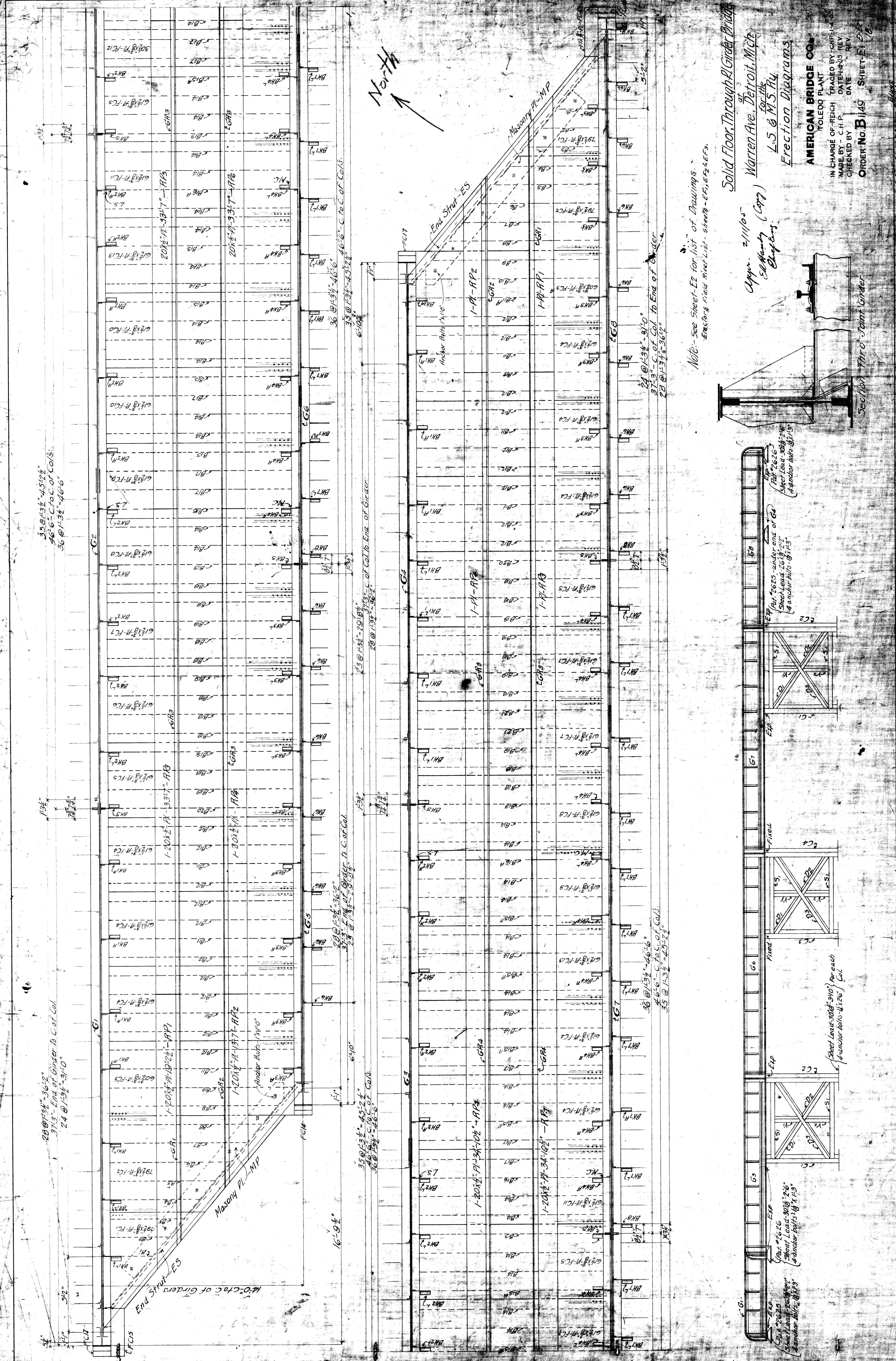


SECTION "B-B"



SECTION "C-C"

M.C.R.R. BAY CITY DIV.
 BRIDGE 322 WARREN AVE.
 NORTH ABUTMENT
 SCALE 1/4" = 1'-0"
 NOV. 1904
 Approved: *Raymond Amos*
 BRIDGE ENGINEER
 File XU 77-18



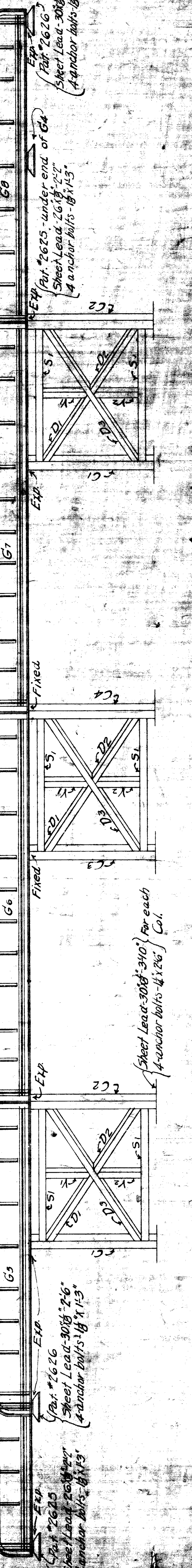
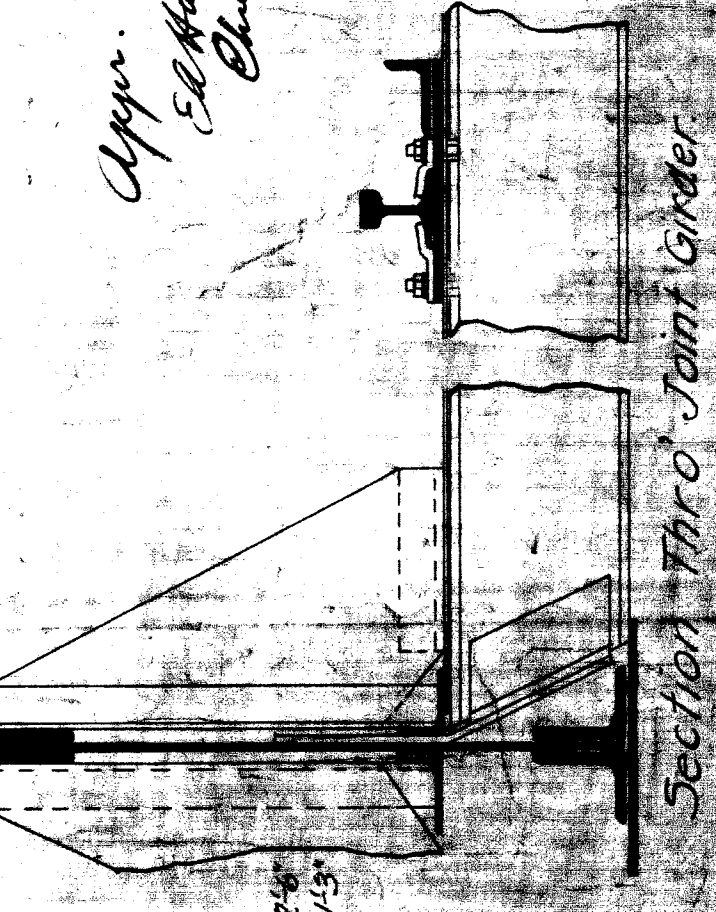
North
↑

Note - see sheet E2 for list of Drawings.
Erection Diagrams

Warren Ave. Detroit, Mich.
L.S. & M.S. Ry.
Erection Diagrams

AMERICAN BRIDGE CO.
TOLEDO PLANT

IN CHARGE OF REICH TRACED BY CHFF
MADE BY C.H.P. DATE 4-23-15
CHECKED BY DATE REV
ORDER NO. B 1149 SHEET E-1 276



35 @ 13 1/2" = 457 1/2"
46'-6" C.T.O.C. of Col's.
36 @ 1'-3 1/2" = 46'-6"

20 @ 13 1/2" = 267 1/2"
37'-3" End of Girder to C. of Col.
24 @ 1'-3 1/2" = 31'-0"

23 @ 13 1/2" = 298 1/2"
37'-3" C. of Col. to End of Girder.
20 @ 1'-3 1/2" = 26'-7"

35 @ 13 1/2" = 457 1/2"
36 @ 1'-3 1/2" = 46'-6"
36 @ 1'-3 1/2" = 46'-6"

24 @ 13 1/2" = 317 1/2"
37'-3" C. of Col. to End of Girder.
20 @ 1'-3 1/2" = 26'-7"

36 @ 13 1/2" = 466 1/2"
46'-6" C.T.O.C. of Col's.
35 @ 1'-3 1/2" = 457 1/2"

Sheet Lead 306" = 26'
4 anchor bolts 1/4" x 15"

Sheet Lead 306" = 26'
4 anchor bolts 1/4" x 15"

Sheet Lead 306" = 26'
4 anchor bolts 1/4" x 15"