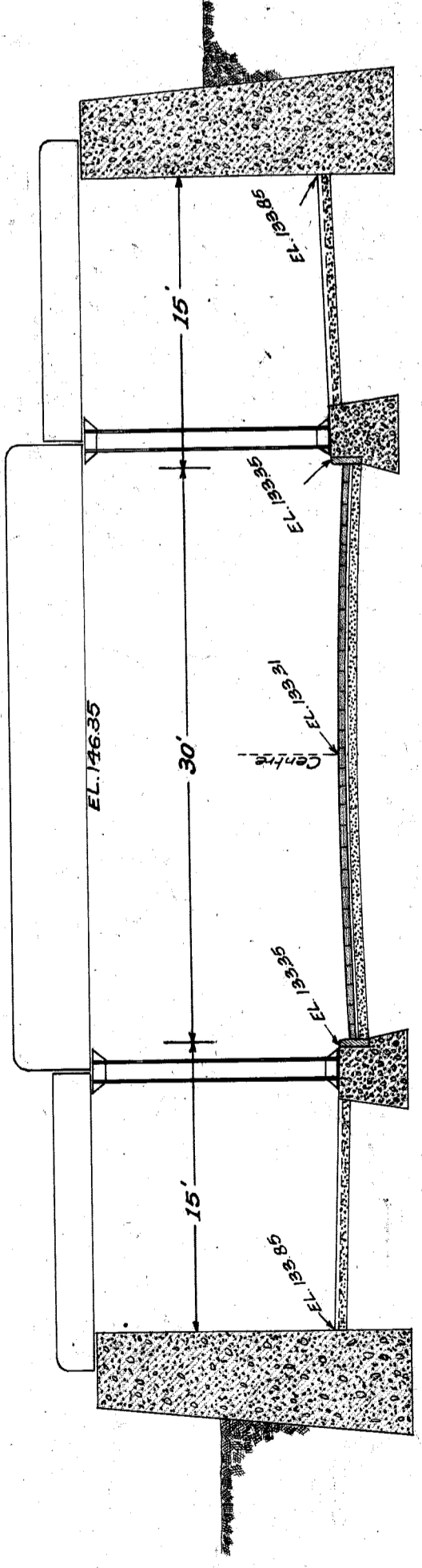
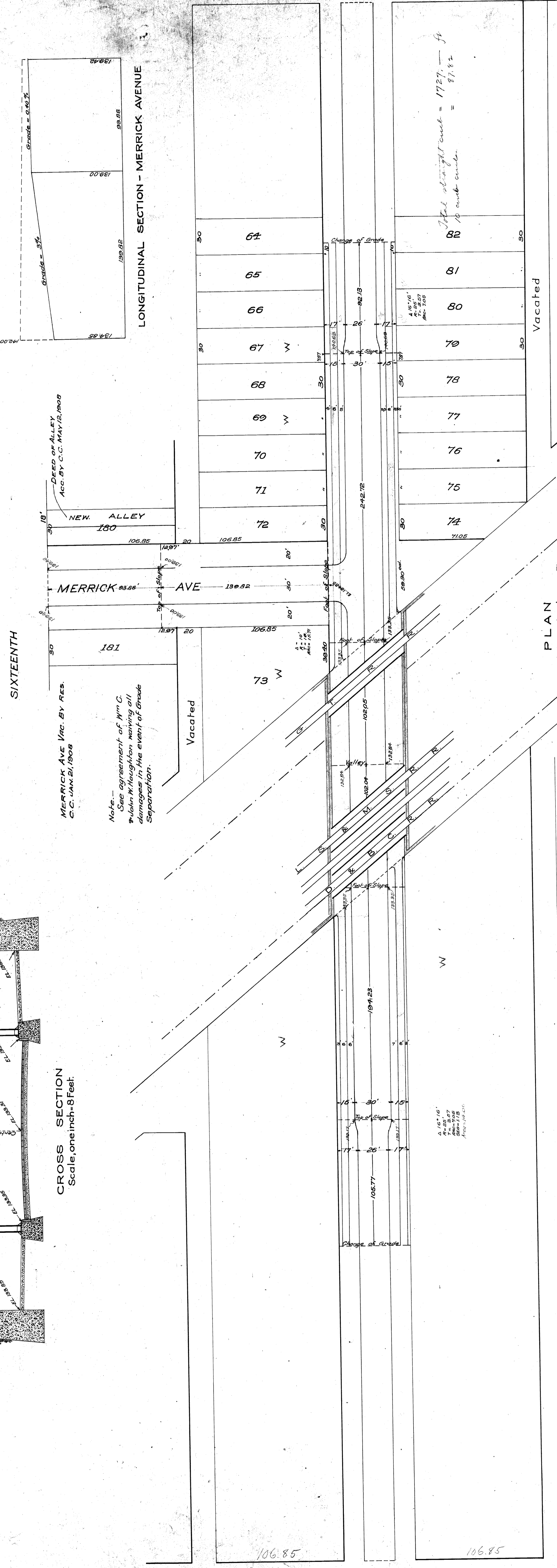


PLAN OF PROPOSED SUBWAY
 IN 15TH ST., UNDER
 D. & B. C., L. S. & M. S. & G. T. RWYS.

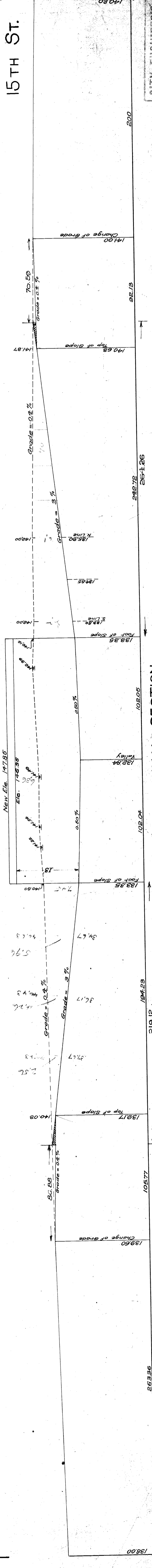
Approved, February 27, 1907.
W. C. Conwell City Engineer
Chas. A. ... Chief Engineer, M.C.R.R.



CROSS SECTION
 Scale, one inch = 8 feet



PLAN
 Scale, one inch = 40 ft.

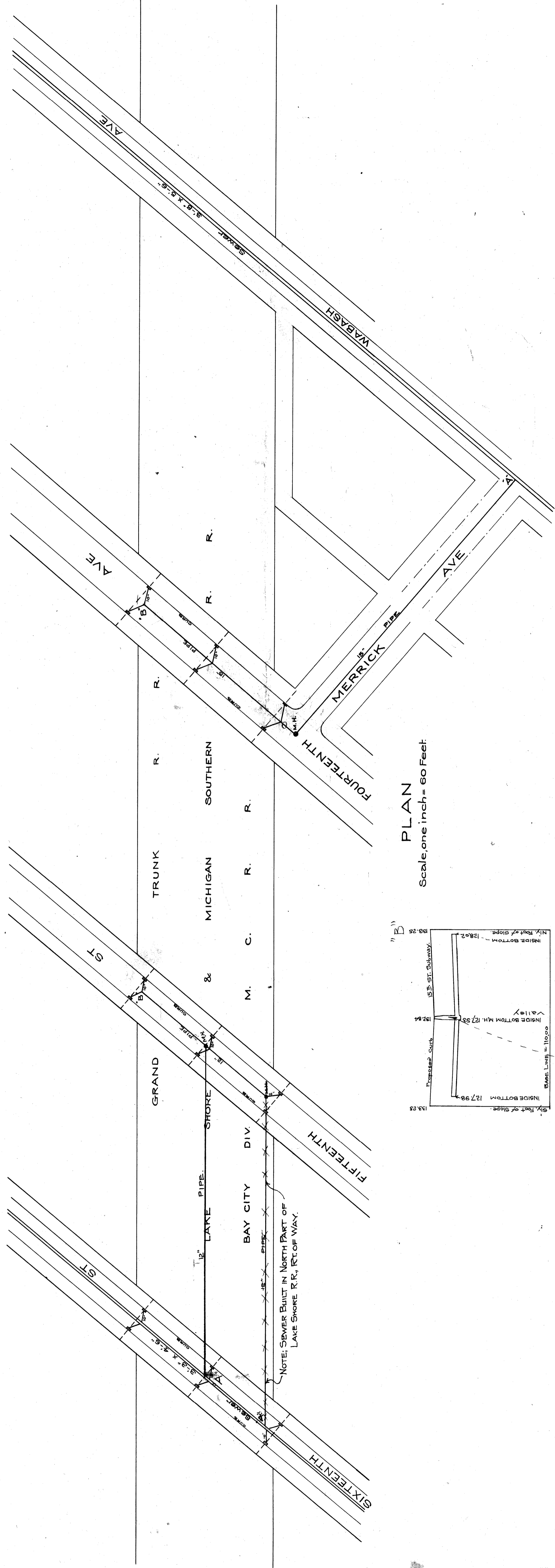


LONGITUDINAL SECTION
 HOR. SCALE, ONE INCH = 40 FEET.
 VER. " " = 10 "

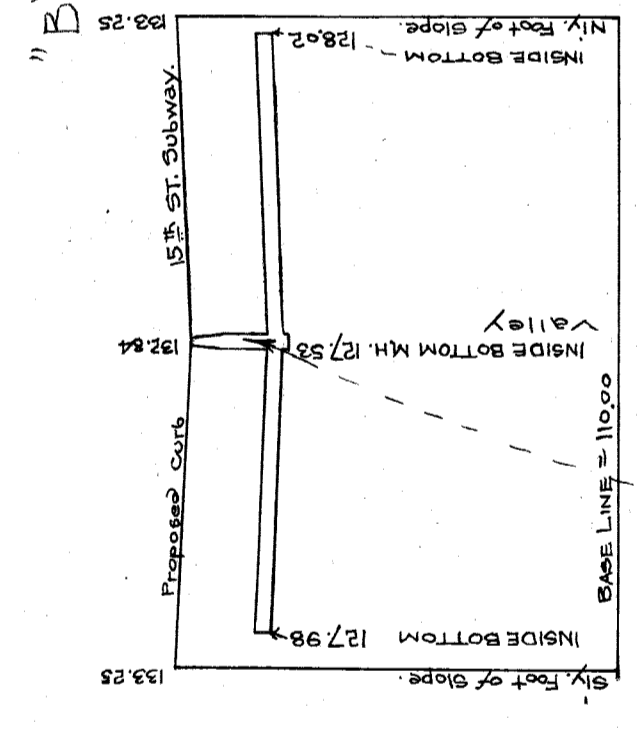
CITY ENGINEER'S OFFICE
 GRADE SEPARATION
 City Engineer's Office
 Case A
 April 16, 1906

File XU 14-1

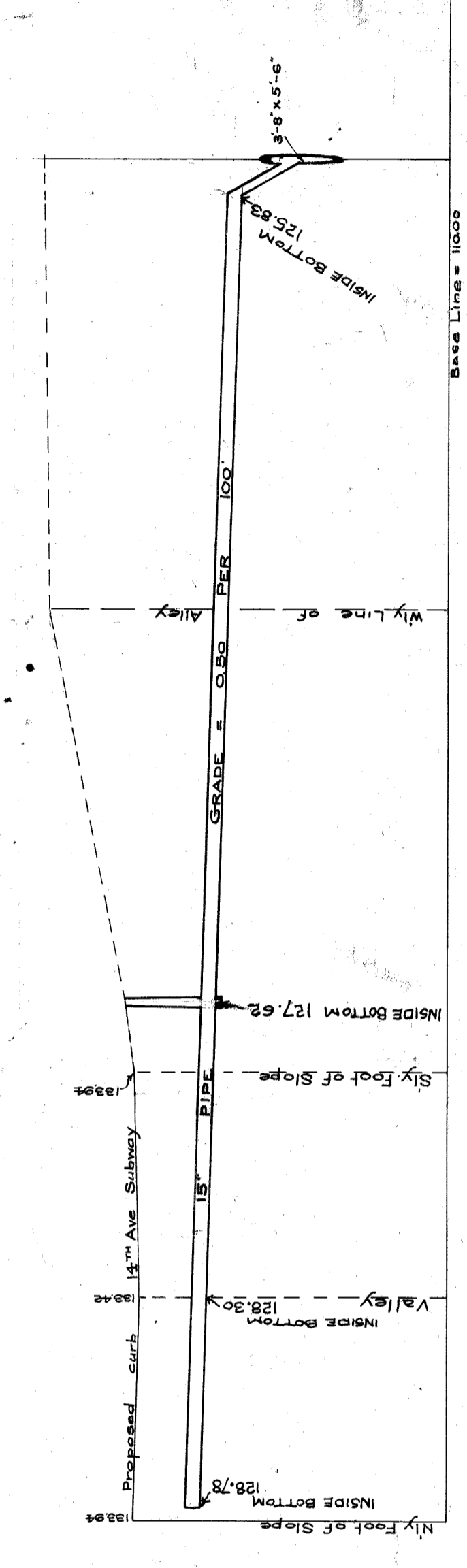
DRAINAGE PLAN FOR SUBWAYS IN FOURTEENTH AVE, FIFTEENTH & SIXTEENTH STS



PLAN
Scale, one inch = 60 Feet

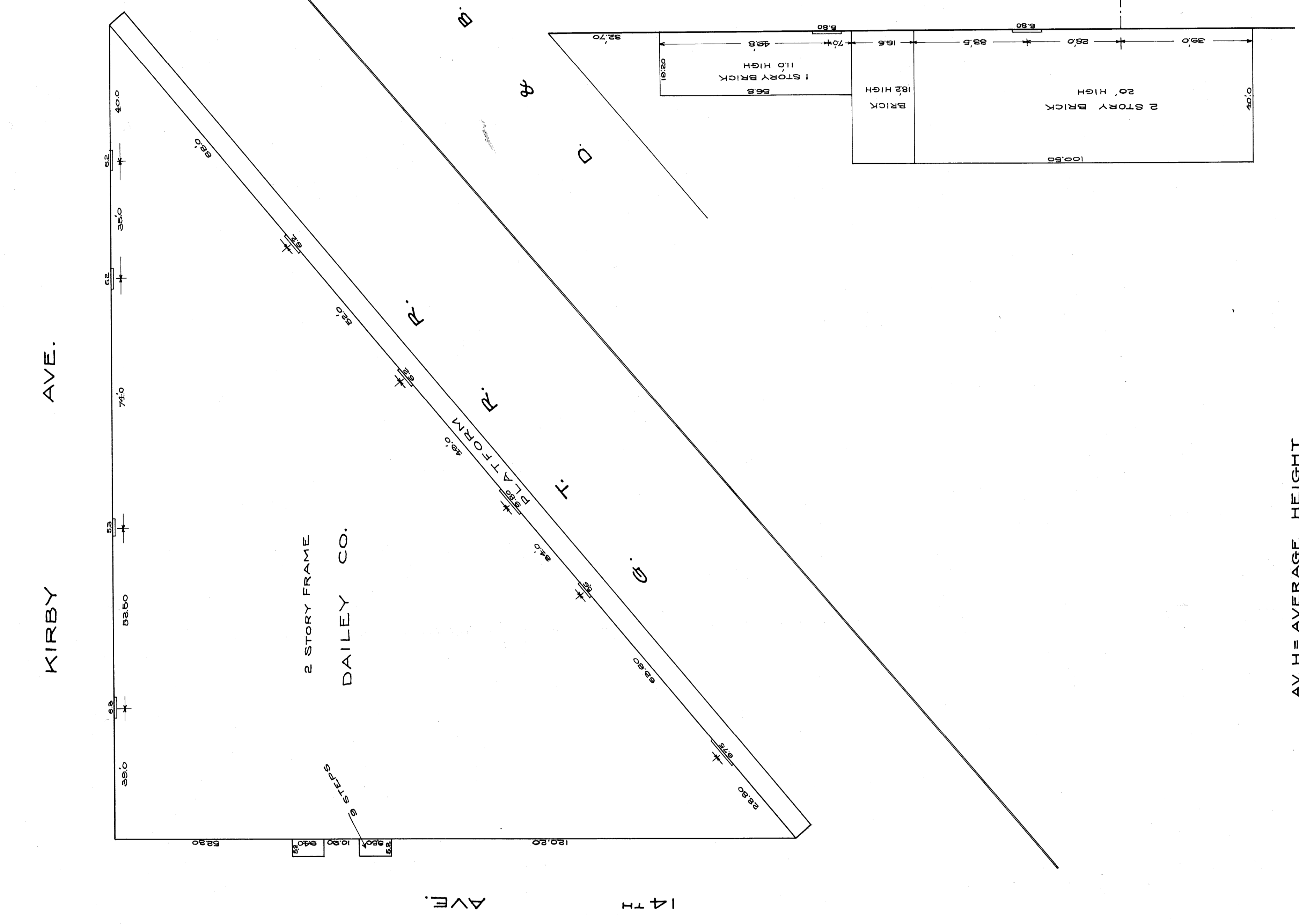


PROFILE 'A' TO 'B'



PROFILE 'A' TO 'B'

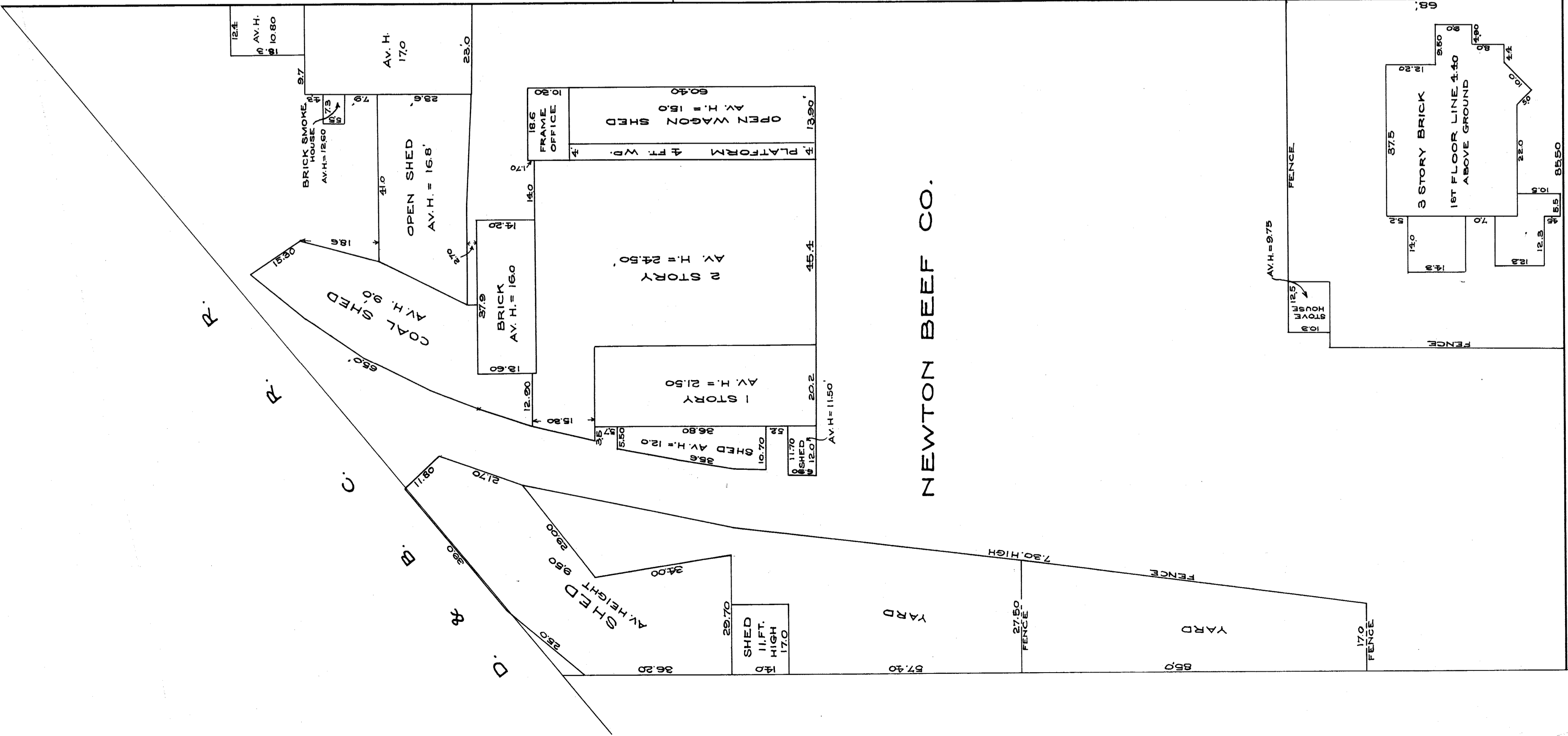
KIRBY AVE.



2 STORY FRAME
DAILEY CO.

AVE.

14 TH



NEWTON BEEF CO.

PUTNAM

14 TH

AVE

CITY ENGINEER'S OFFICE
GRADE SURVEYING & ENGINEERING
Case No. 4-J No. 110

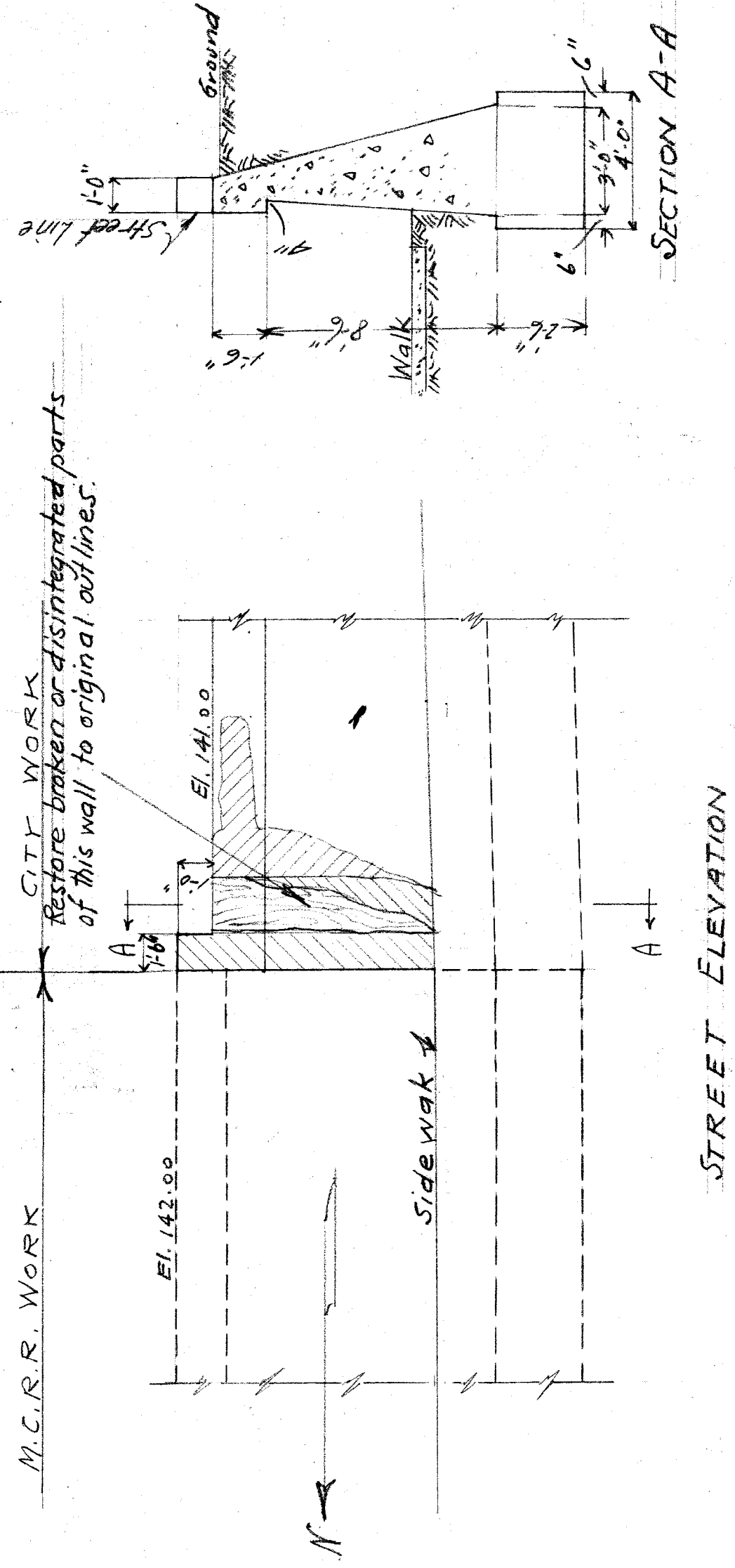
AV. H = AVERAGE HEIGHT

SCALE, ONE INCH = 20 FT.

File XU 14-3

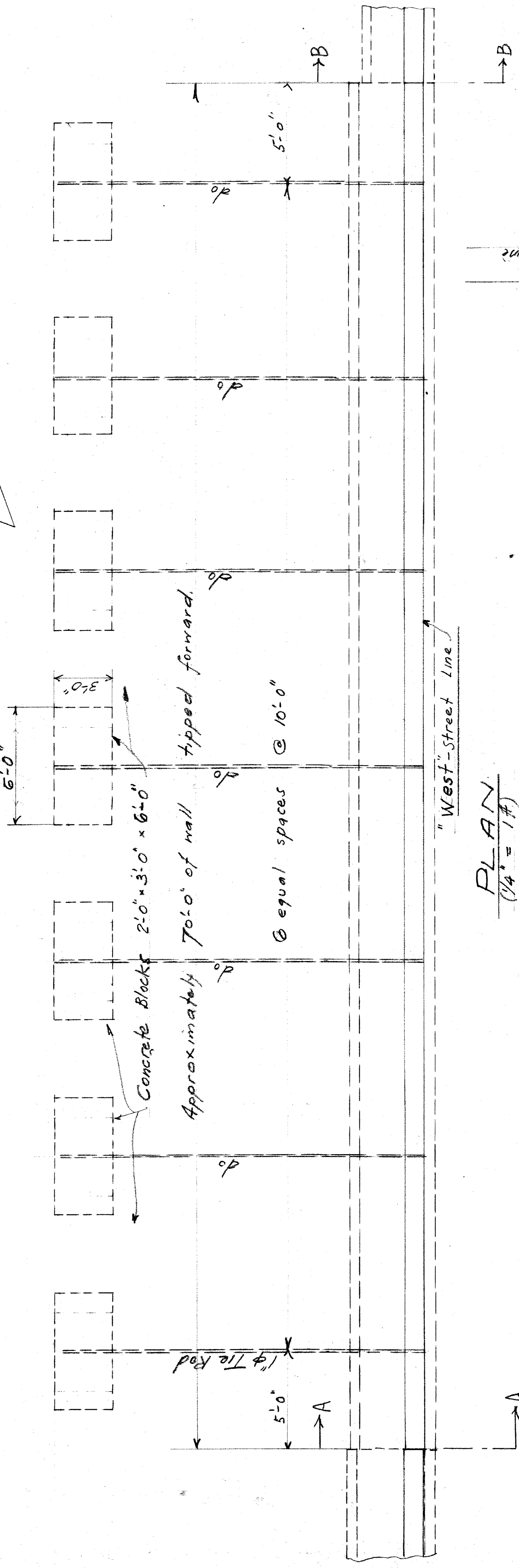
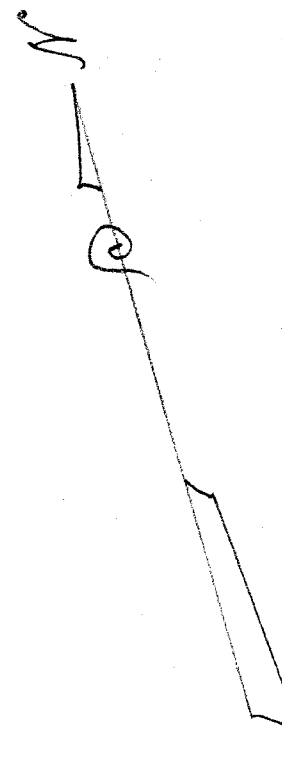
CITY ENGINEER'S OFFICE
DRAWN BY J.W. REID, JUNE 1908.

M.C.R.R. WORK
CITY WORK
Restore broken or disintegrated parts
of this wall to original outlines.

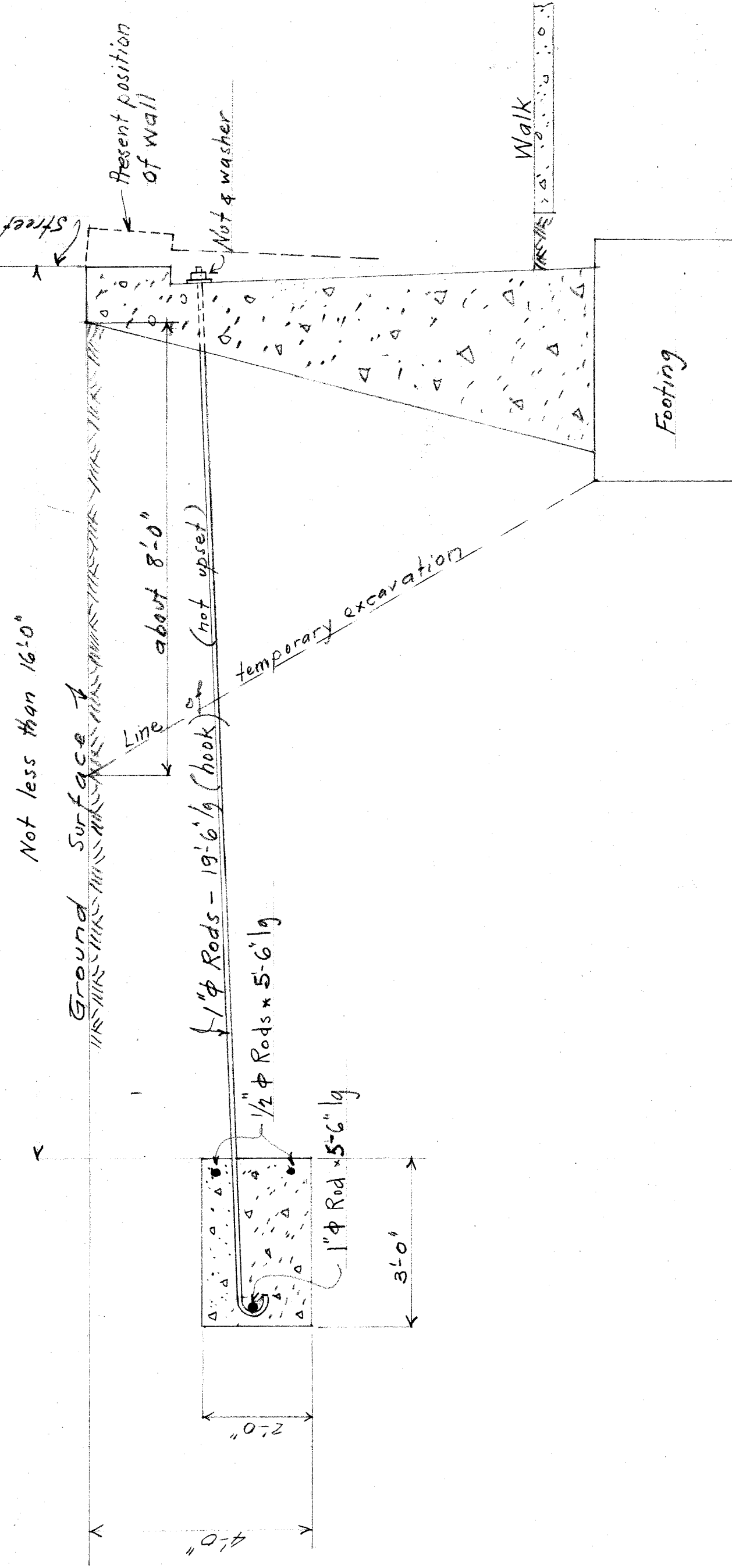


STREET ELEVATION

WALL SOUTH OF M.C.R.R. - EAST SIDE
Scale 1/4" = 1'

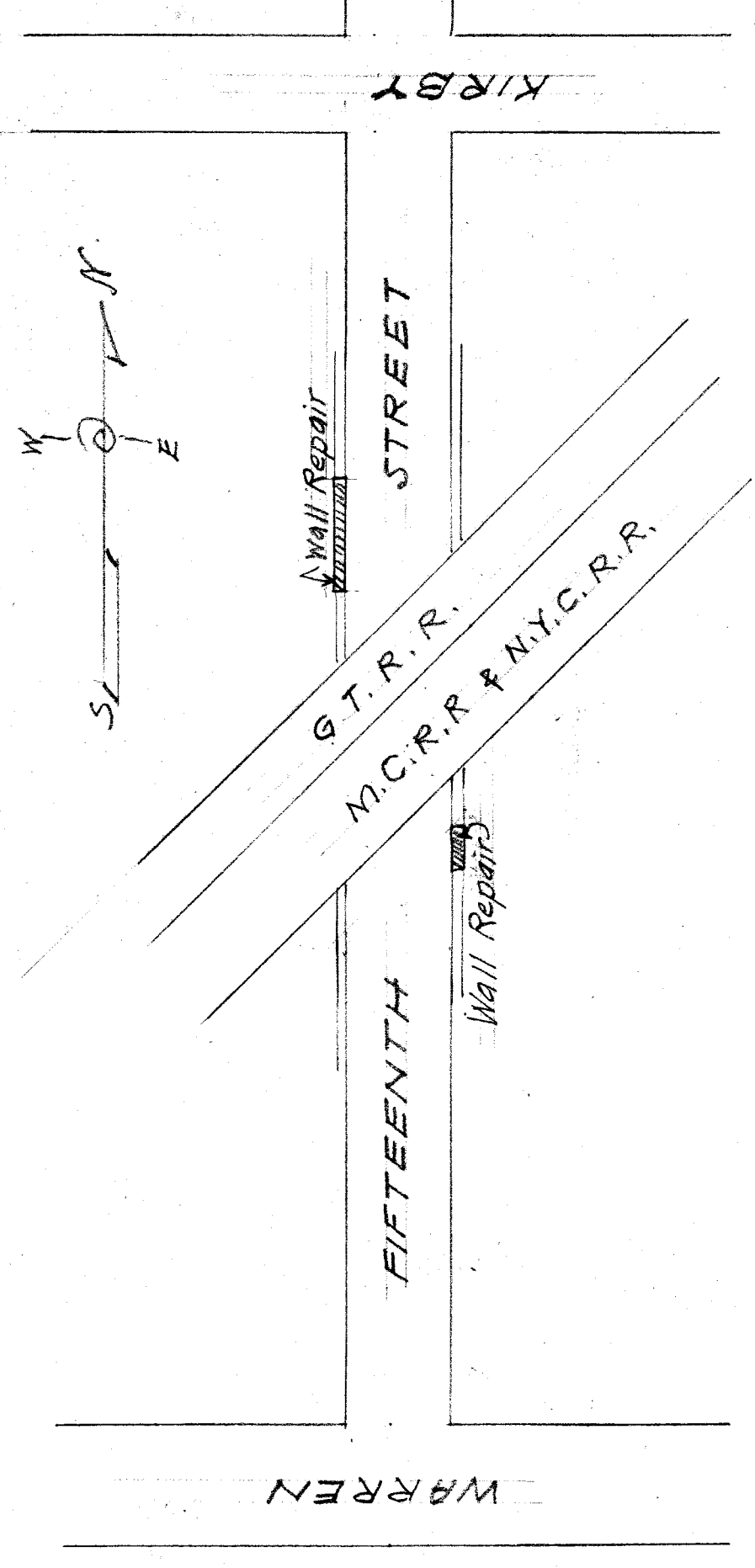


PLAN
Scale 1/4" = 1'



SECTION SHOWING METHOD OF STABILIZING WALL
AFTER BEING PUSHED BACK.
Scale 1/2" = 1'

- Quantities:
- 9 1/2 cu yds Concrete (1:2:4 Mix)
 - 7-1" Tie Rods 19'-6" lg - Nut & 0.6 Washer
 - 14-1/2" Reinforcing Rods 5'-6" lg
 - 7-1" Rod 5'-6" lg
- 375 lbs
155 "



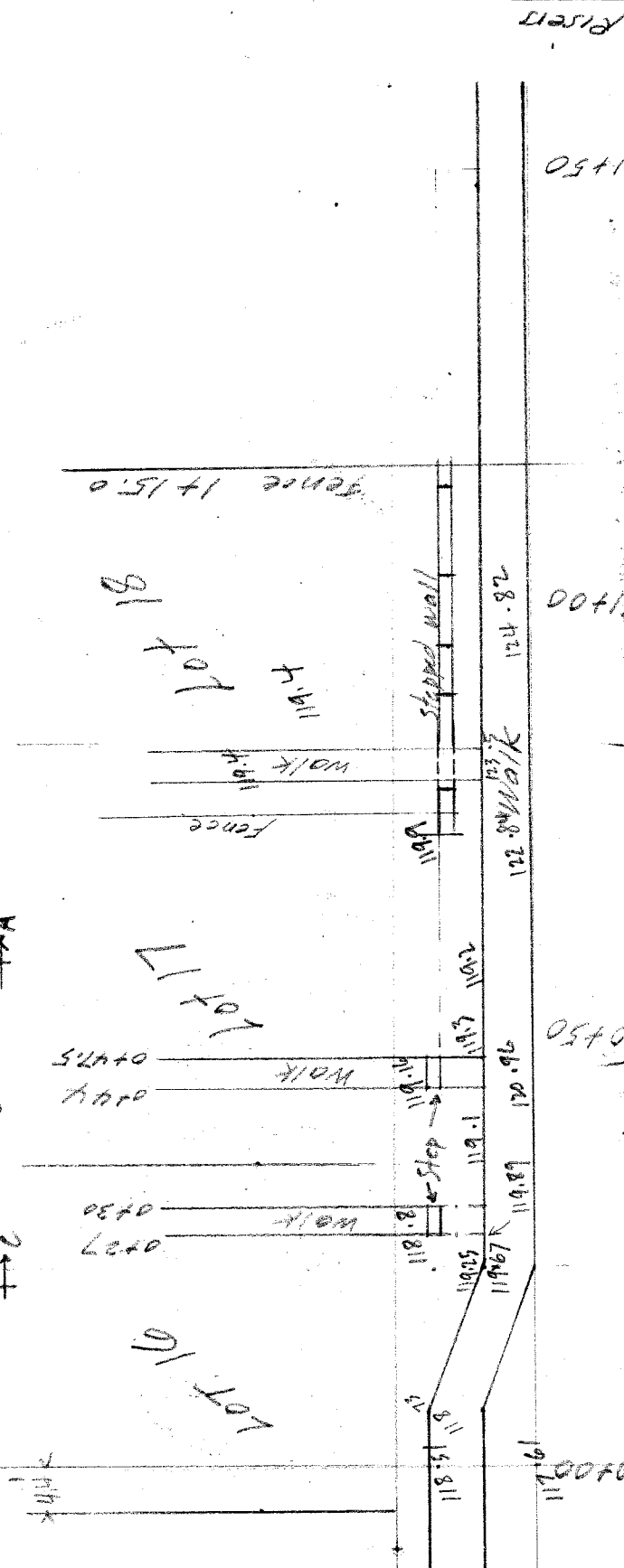
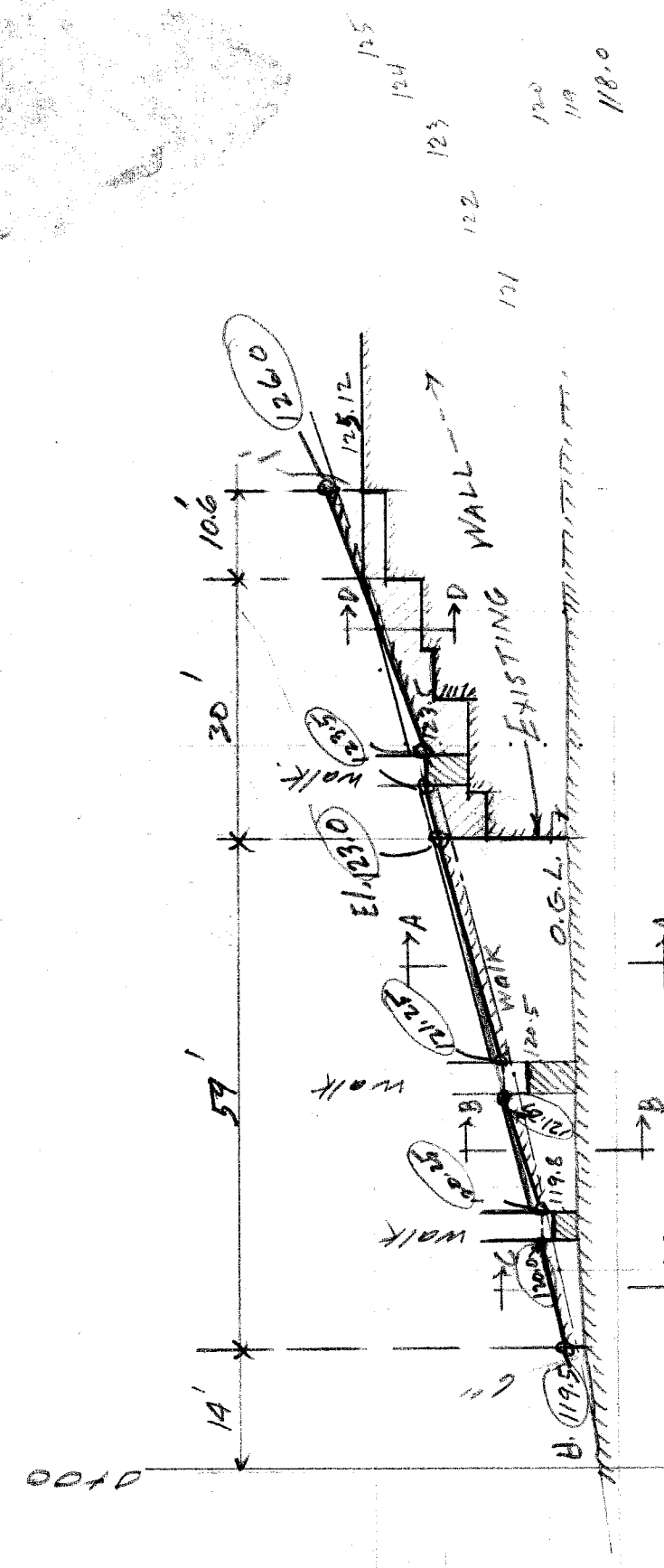
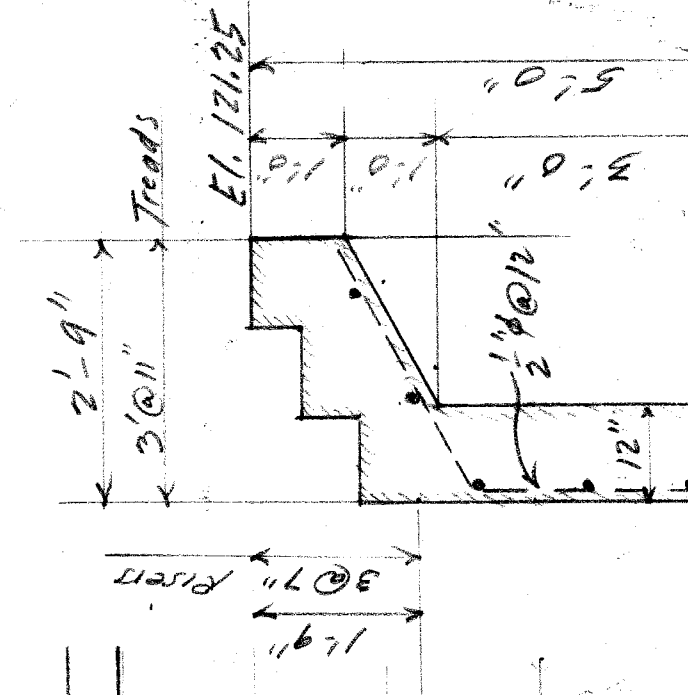
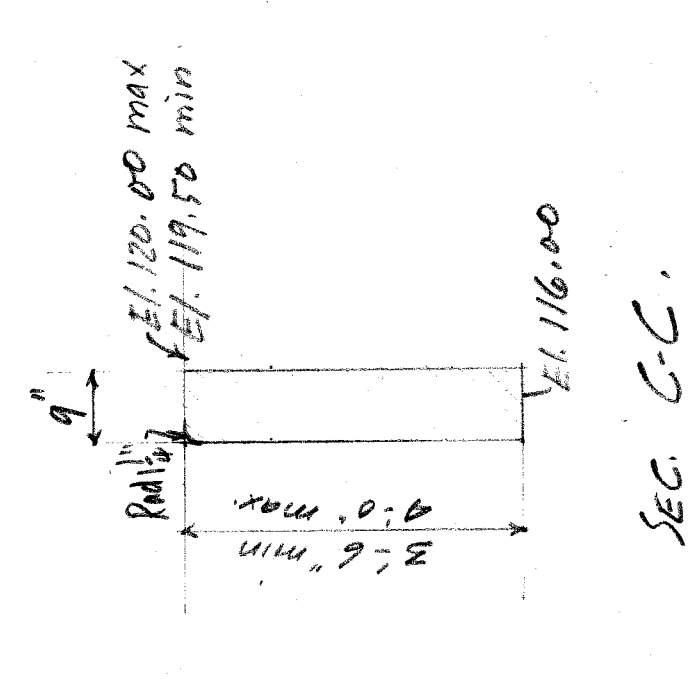
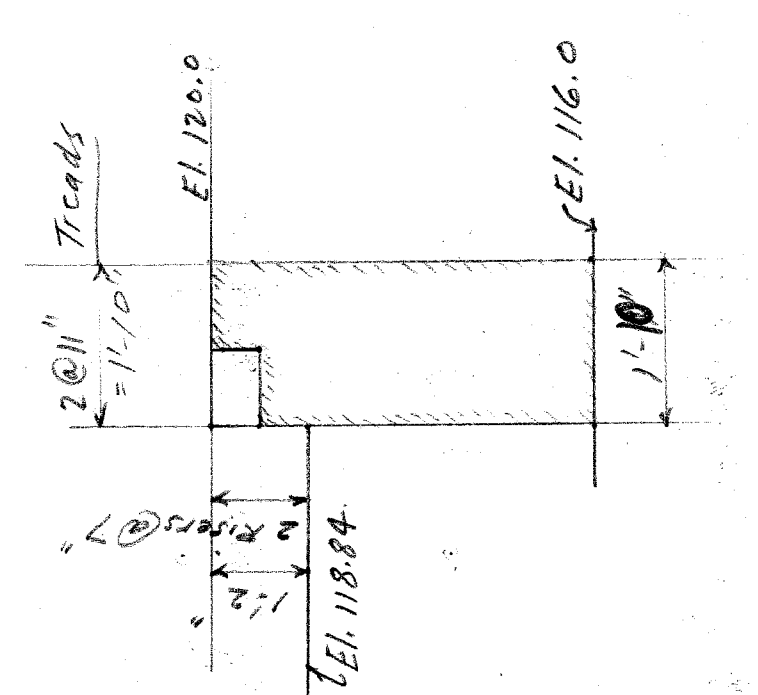
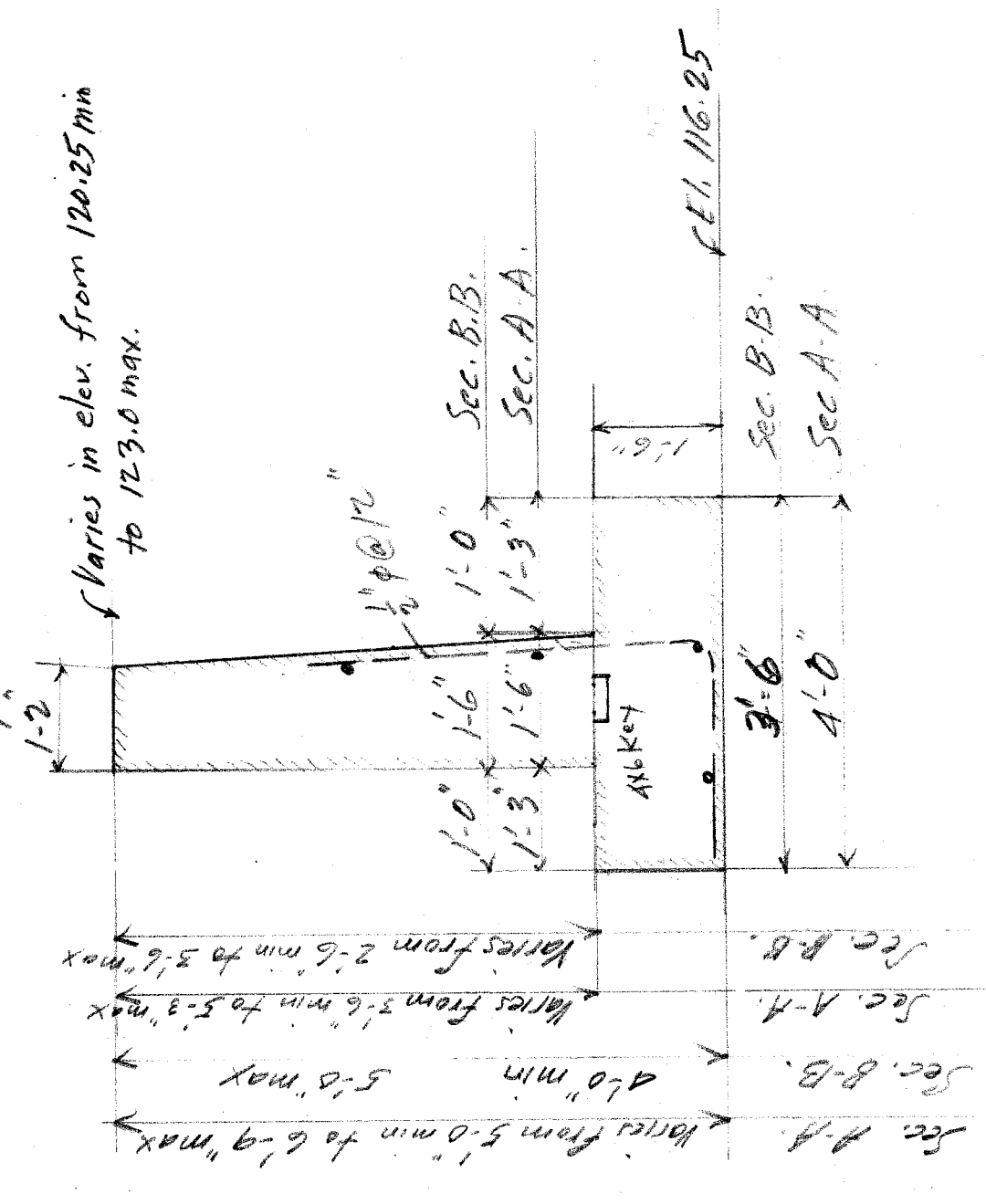
LOCATION PLAN

CITY OF DETROIT
DEPARTMENT OF PUBLIC WORKS
Office of City Engineer.

REPAIRS TO 15TH ST. WALLS
BETWEEN WARREN & KIRBY

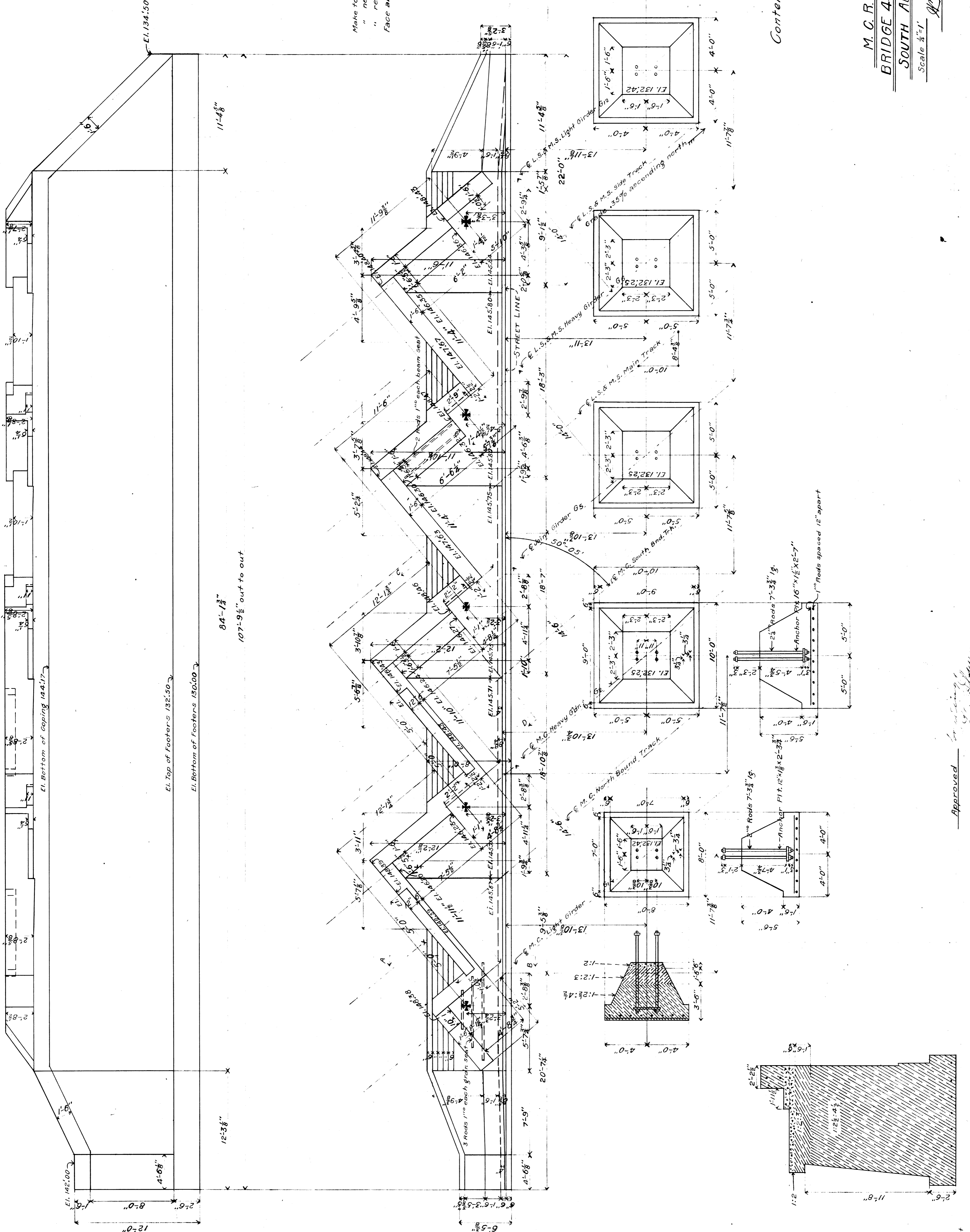
Made by: R.S.
Checked by: J.L.B.
June 7th 1933.

WALL NORTH OF G.T.R.R. - WEST SIDE



STEPS Sta. 0127-0130

STEPS Sta. 0144-0147.5



Make top 6" of bridge seat 1 Cement: 2 Sand.
 " next 1'-6" 1 Cement: 2 Sand: 3 Broken Stone.
 " rest of Masonry 1" : 2 1/2 " : 4 1/2 "
 Face all exposed surfaces with 1/2" of Mortar.

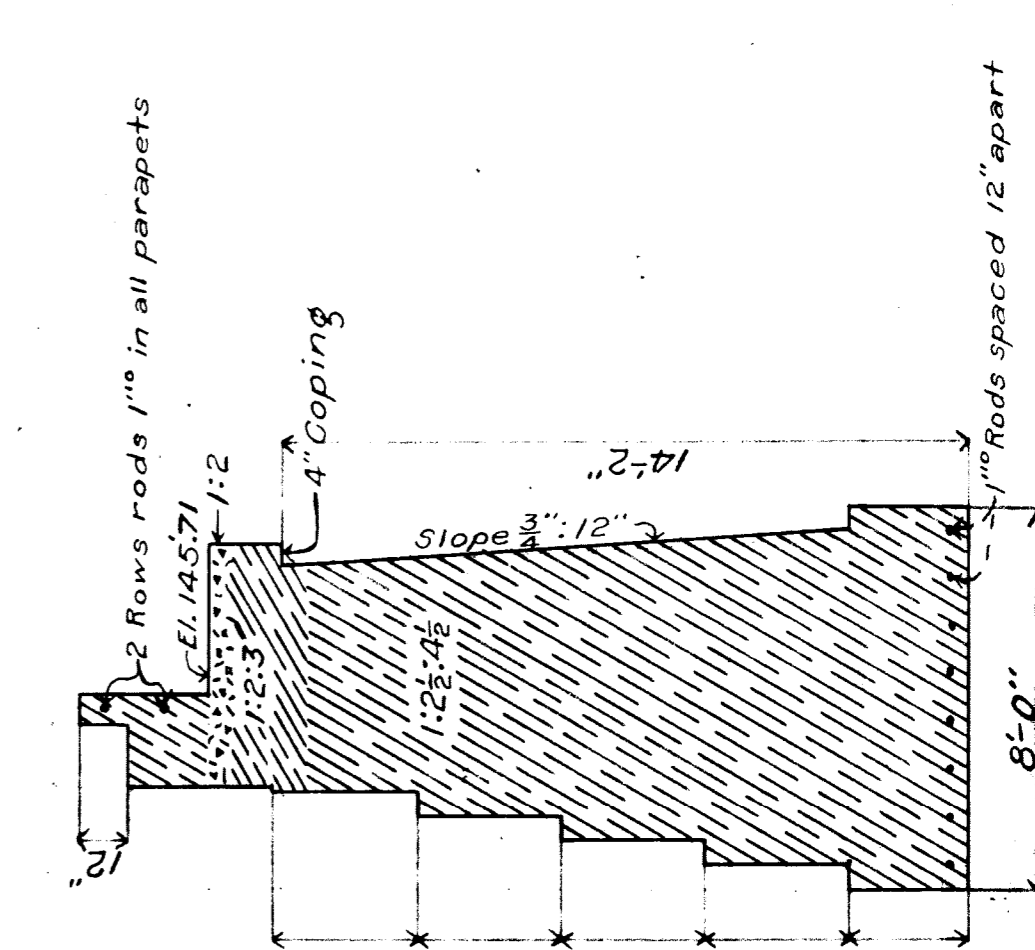
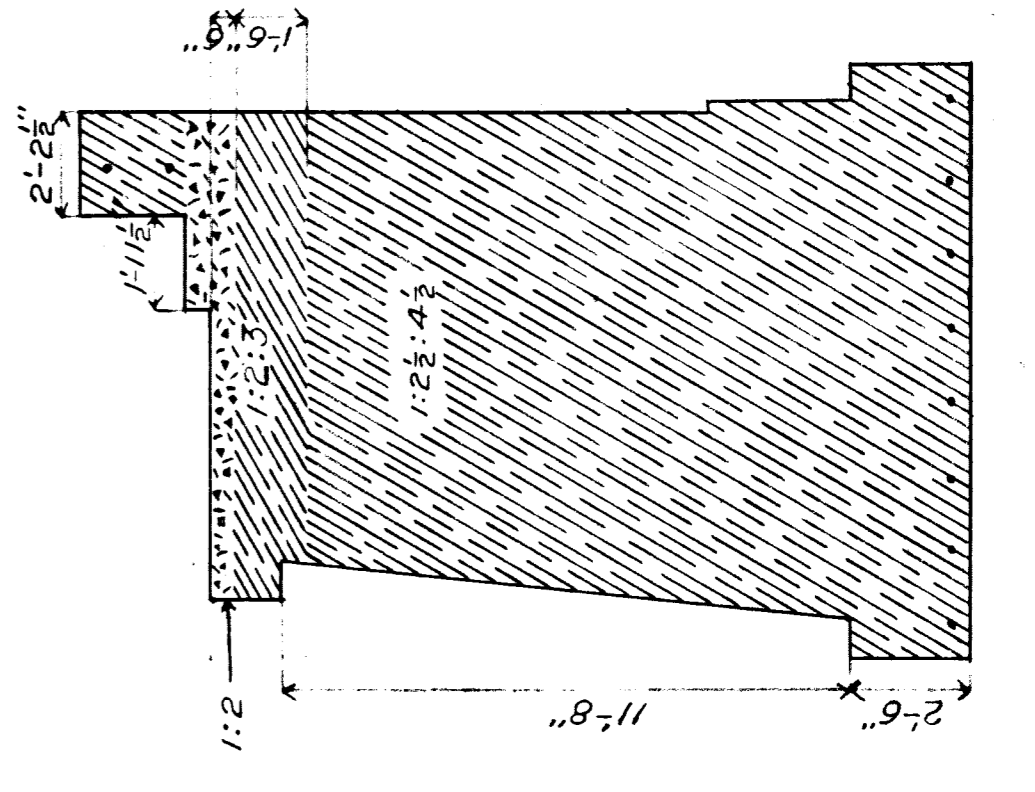
Contents Abutment M.C. 2095 cu yds.
 L.S. 2007 " " total
 A 10.2 " " total
 Piers M.C. 50.2 " "
 L.S. 50.2 " "

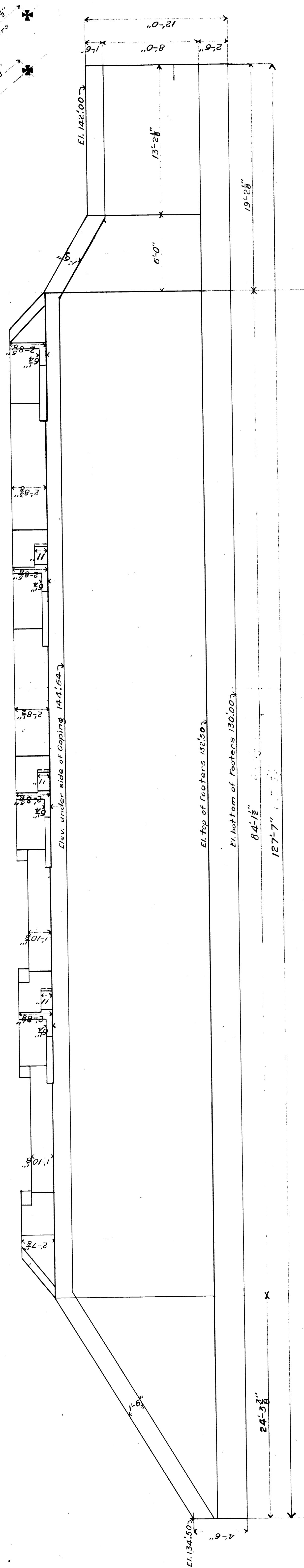
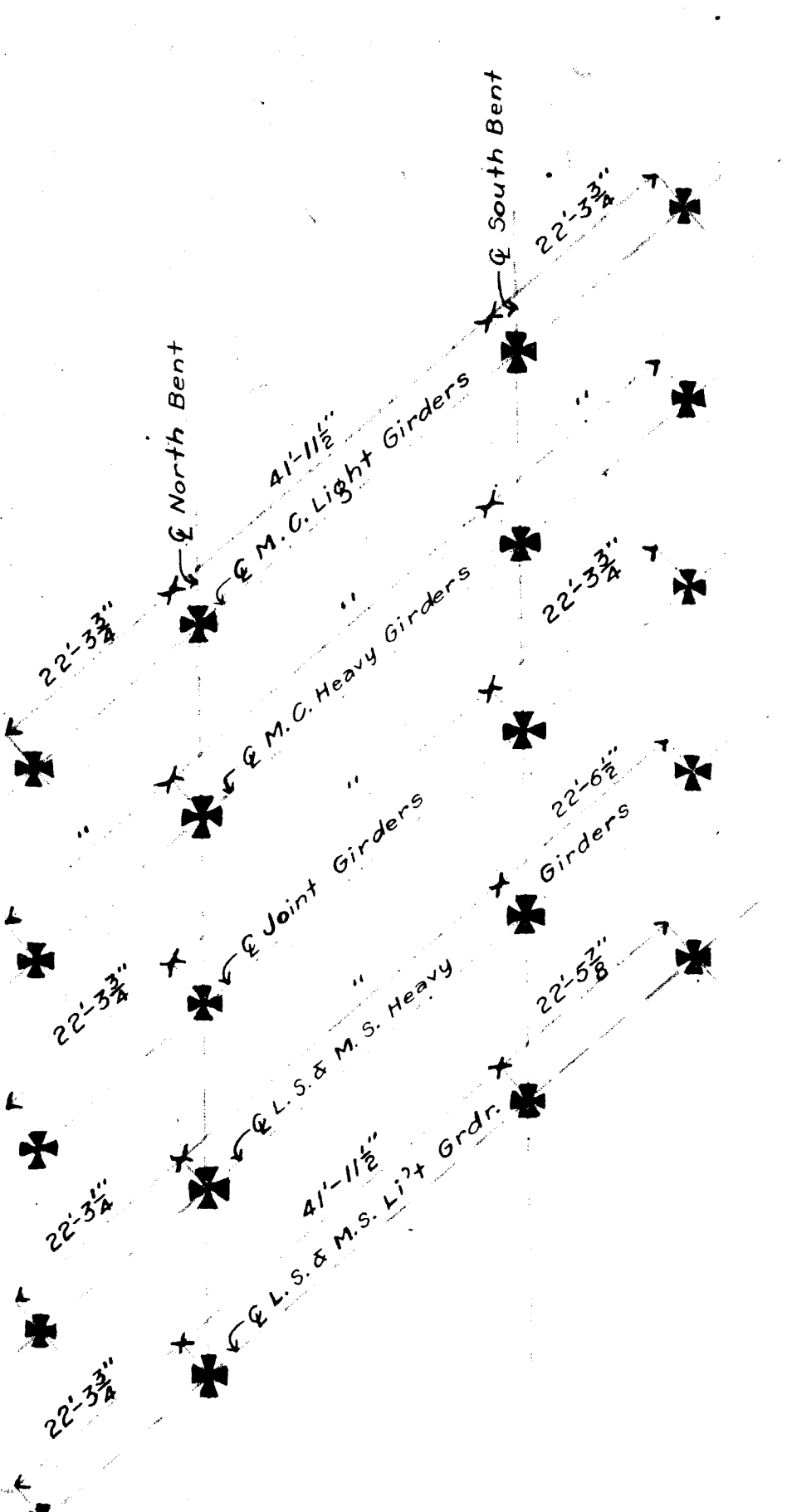
M. C. R. R. - Bay City Div.
 BRIDGE 412-15 15 IN S.W. SUBWAY
 SOUTH ABUTMENT & PIERS
 Scale 1/4" = 1'
 August, 1907.

Approved *[Signature]*
 BRIDGE ENGINEER.

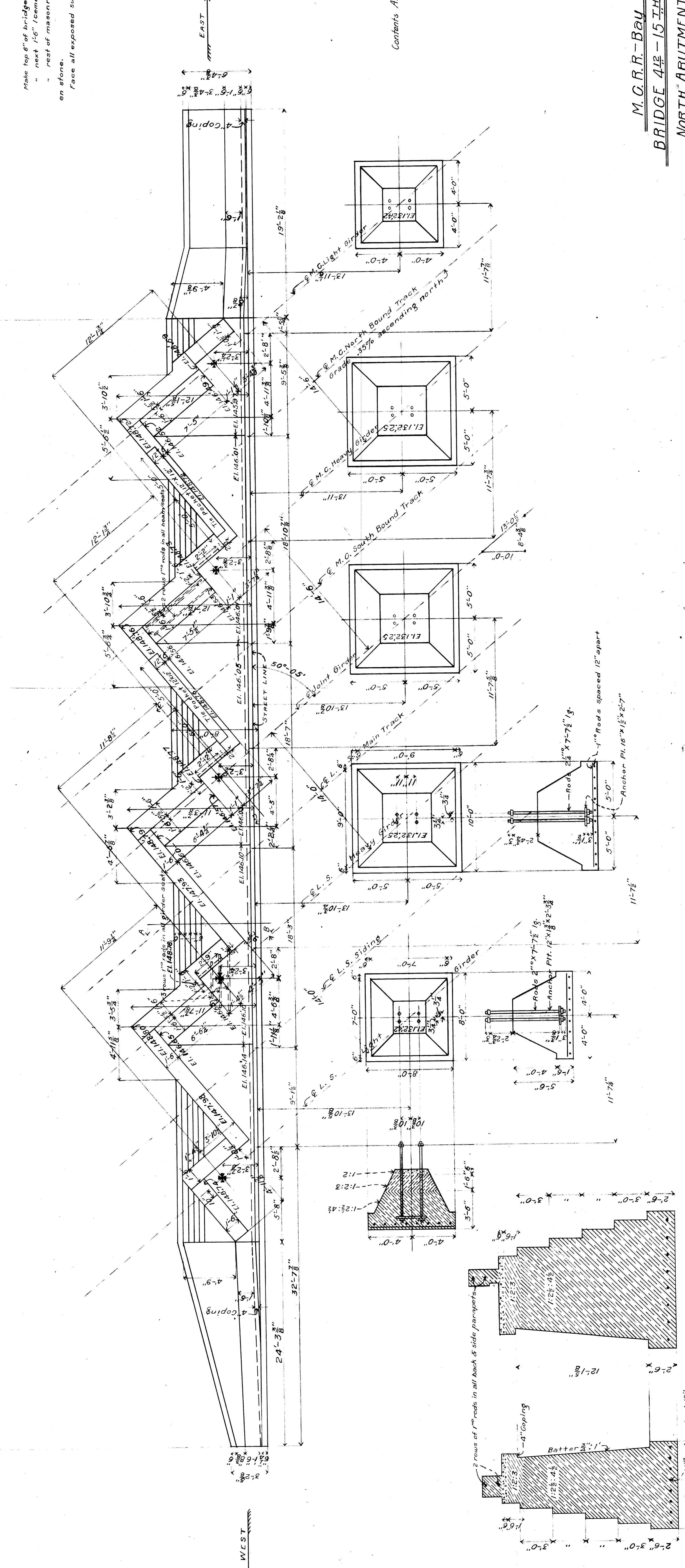
Checked *[Signature]*
 CHIEF ENGINEER.

SECTION CD





Make top 6" of bridge seat / cement : 2 sand.
 " next 1/6" / cement : 2 sand : 3 broken stone
 " rest of masonry / cement : 2 1/2 sand : 4 1/2 broken stone.
 Face all exposed surfaces with 1/2" of mortar.



Contents Abutment MC 246.4 cu yds.
 L.S. 219.1 " "
 total 465.5 " "
 Piers MC 251 " "
 L.S. 251 " "

M.C.R.R.-Bay City Div.
BRIDGE 412 - 15 TH ST SUBWAY
NORTH ABUTMENT & PIERS
 Scale 1/4" = 1'

Approved for printing
 C. Williams
 BRIDGE ENGINEER

September 1907.

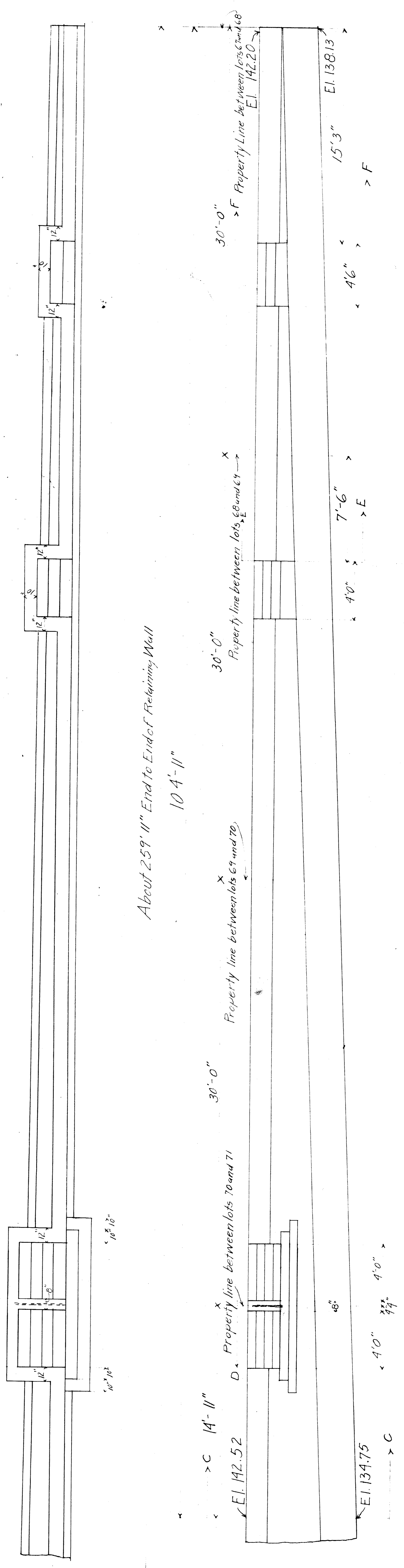
Approved for printing
 C. Williams
 BRIDGE ENGINEER

SECTION CD

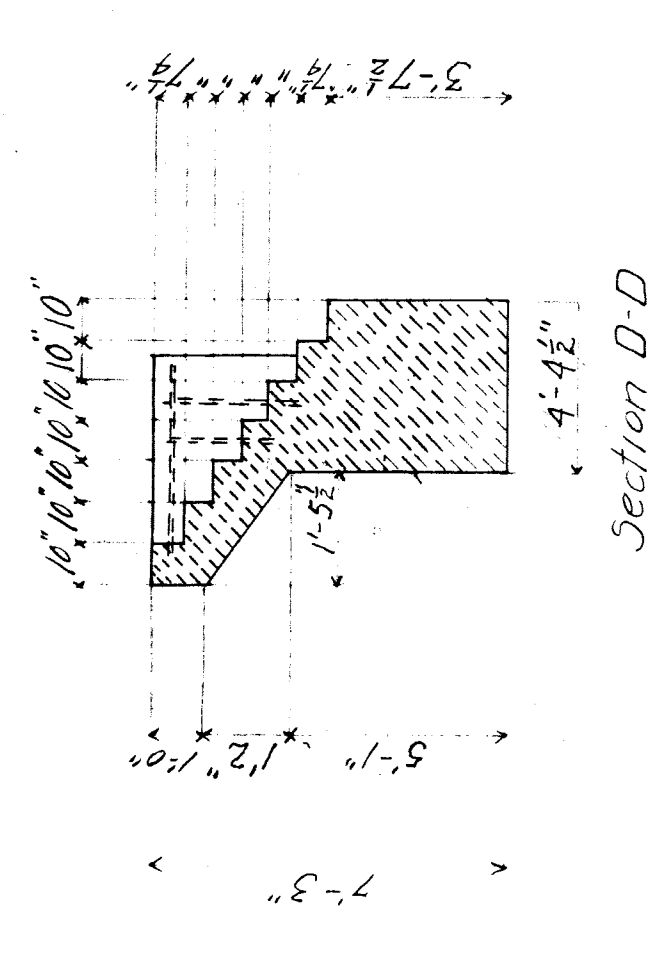
SECTION AB

Ch. Fox 1905

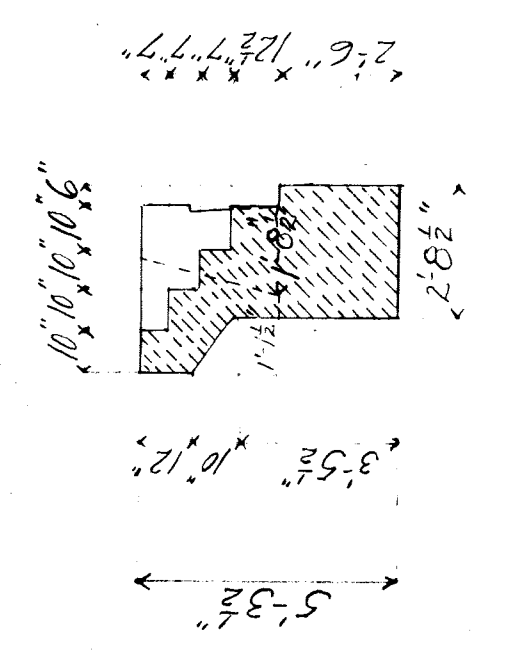
File 16 X 117



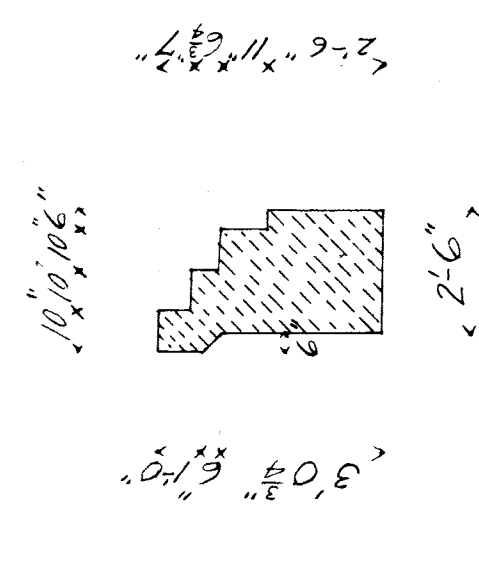
About 25'-11" End to End Retaining Wall
10'-4"-11"



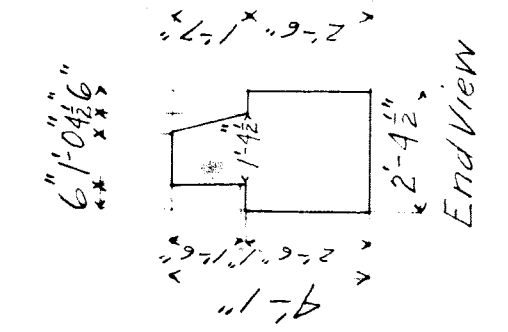
Section D-D



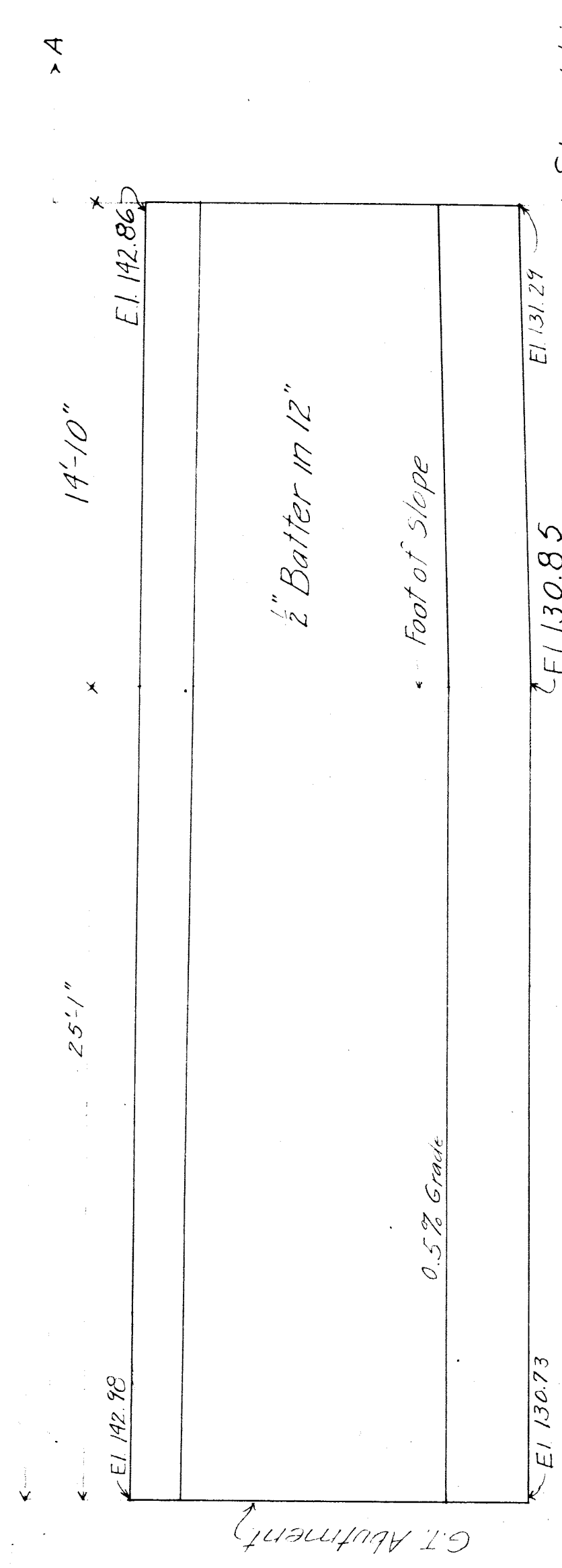
Section E-E



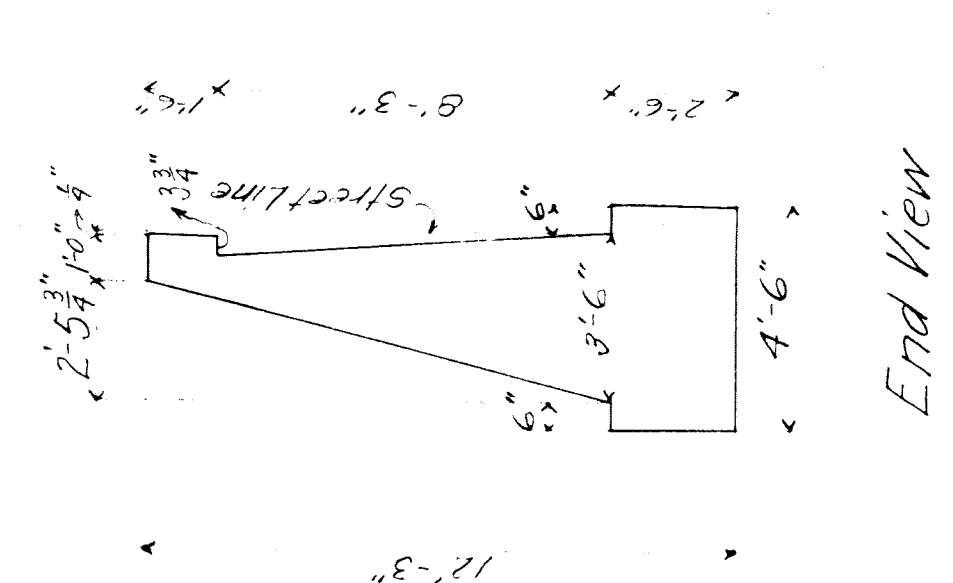
Section F-F



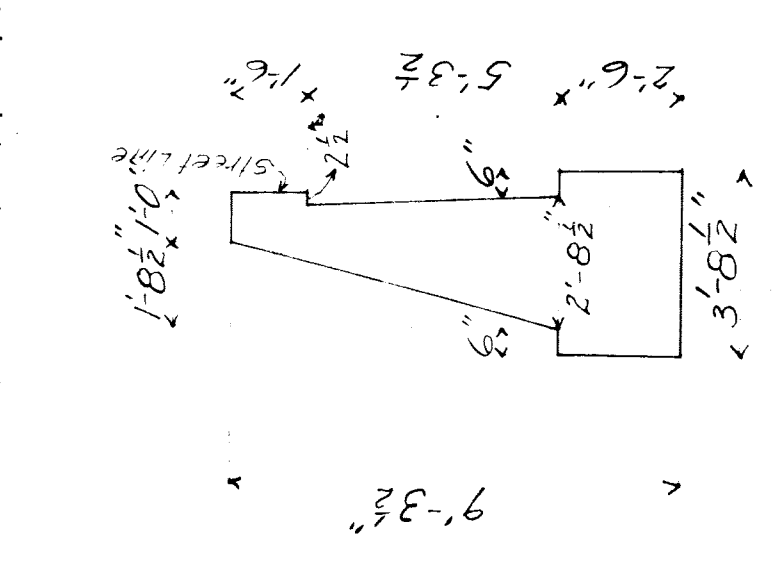
End View



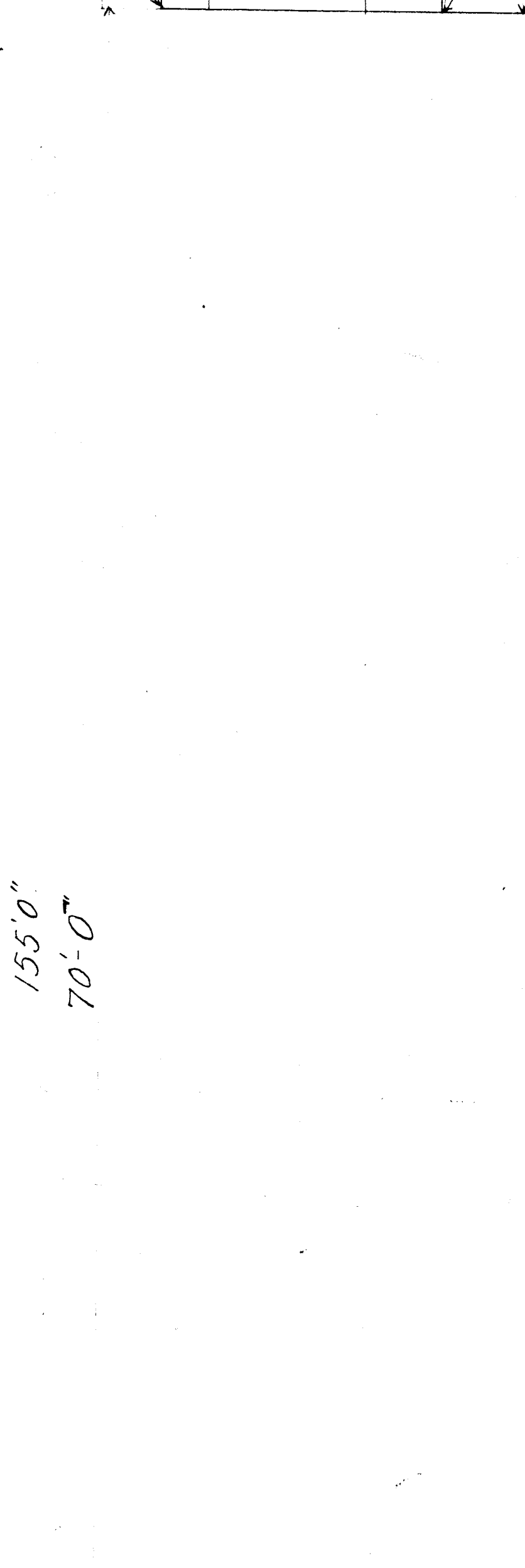
Street Line MERRICK AVE.



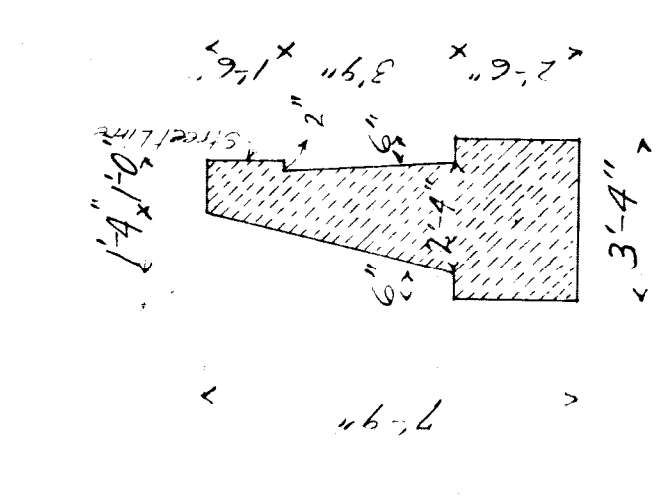
Section A-A



Section B-B



Street Line MERRICK AVE.



Section C-C

Make All Concrete -
1 Part Cement 2 1/2 parts of sand
4 1/2 parts crushed stone.
Face all exposed surfaces with 1/2" mortar

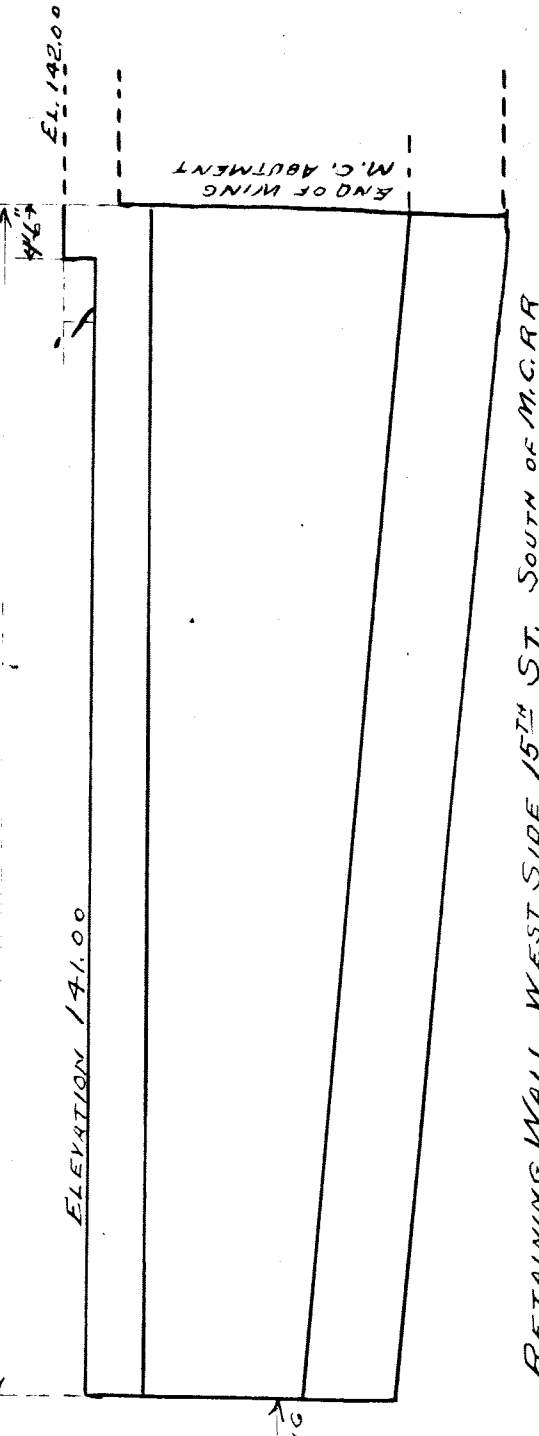
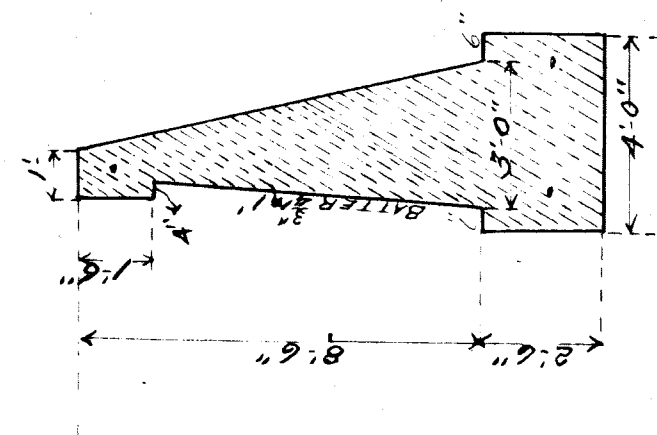
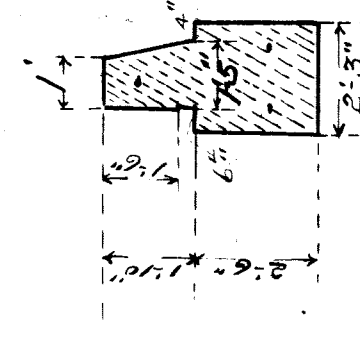
M.C.R.R. BAY CITY DIV.
4 1/2 FIFTEENTH ST.
Retaining Wall West Side North of RofW

Scale: 1" = 1'-0"
J.S.H. Dec. 07.

Approved _____
Bridge Eng.

FILE NO. XUTA-8 4/12

412 D

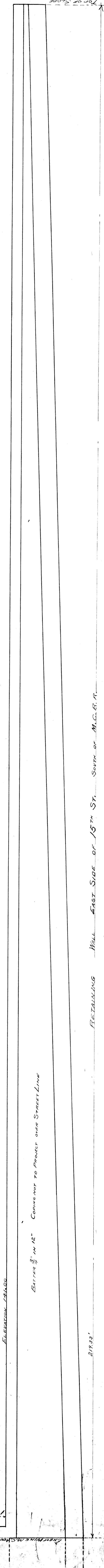


CONTENTS
 RETAINING WALL 28 cu yds
 UNDERPINNING 37
 TOTAL 65

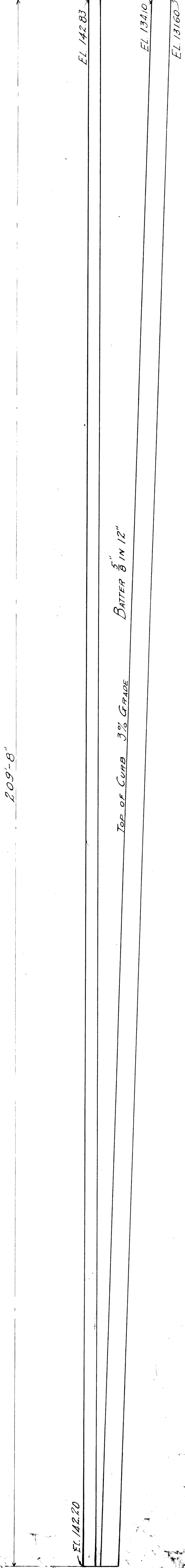
M.C.R.R. BAY CITY DIK
 BRIDGE #4th FIFTEENTH ST
 RETAINING WALLS
 SCALES 1/4"=1'-0" 1/2"=1'-0"
 DEC '07

File XUN-4-9 A12 I

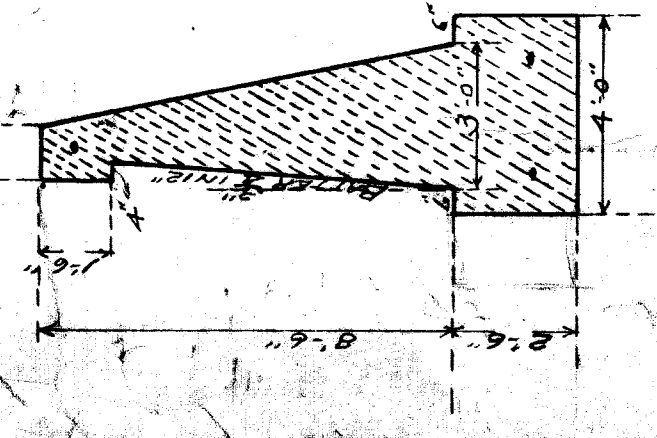
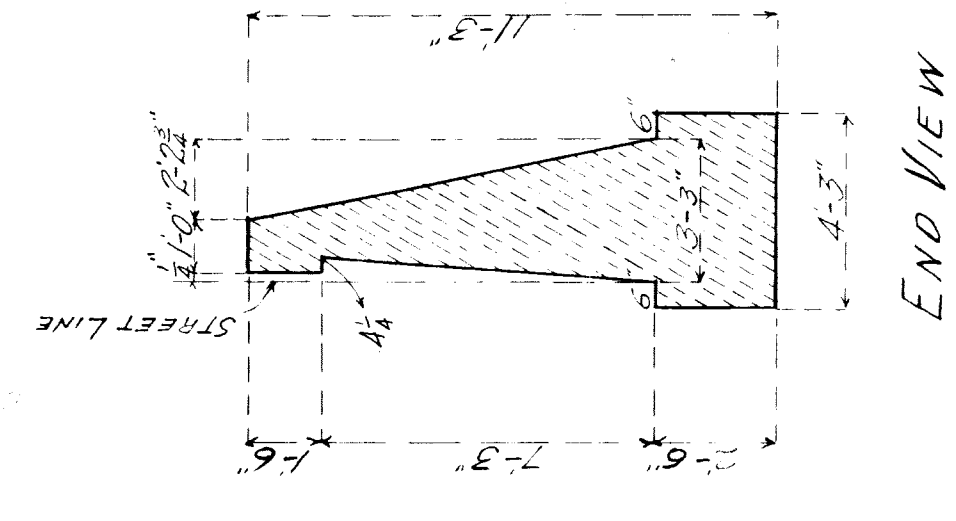
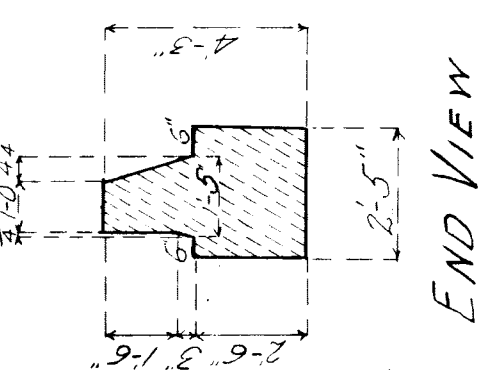
Approved
 Bridge Engineer



RETAINING WALL EAST SIDE OF 15th ST. SUMM. OF M.C.R.R.
 CONTENTS 142 cu yds



RETAINING WALL EAST SIDE OF 15th ST. NORTH OF RIGHT OF WAY
 CONTENTS 145 cu yds



RETAINING WALL
 Between 1/4" and 1/2" Concrete to Project over Street Line

ELEVATION 142.83

21.50'

20.9'-8"

TOP OF CURB 3% GRADE BUTTER 8" IN 12"

EL. 142.83

EL. 131.0

EL. 131.0

END VIEW

END VIEW