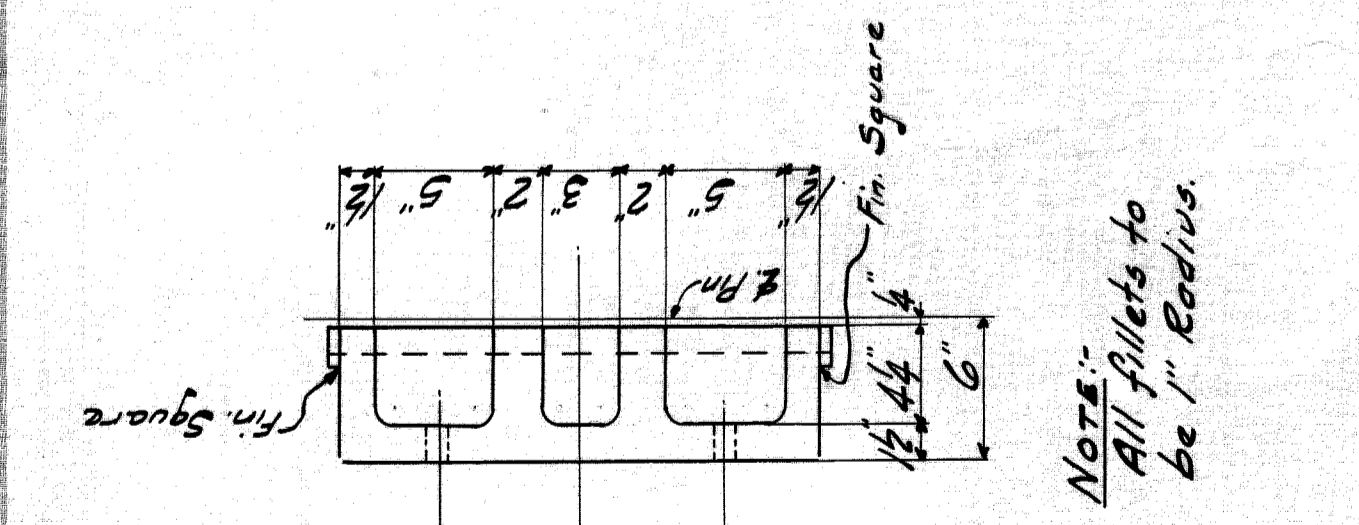
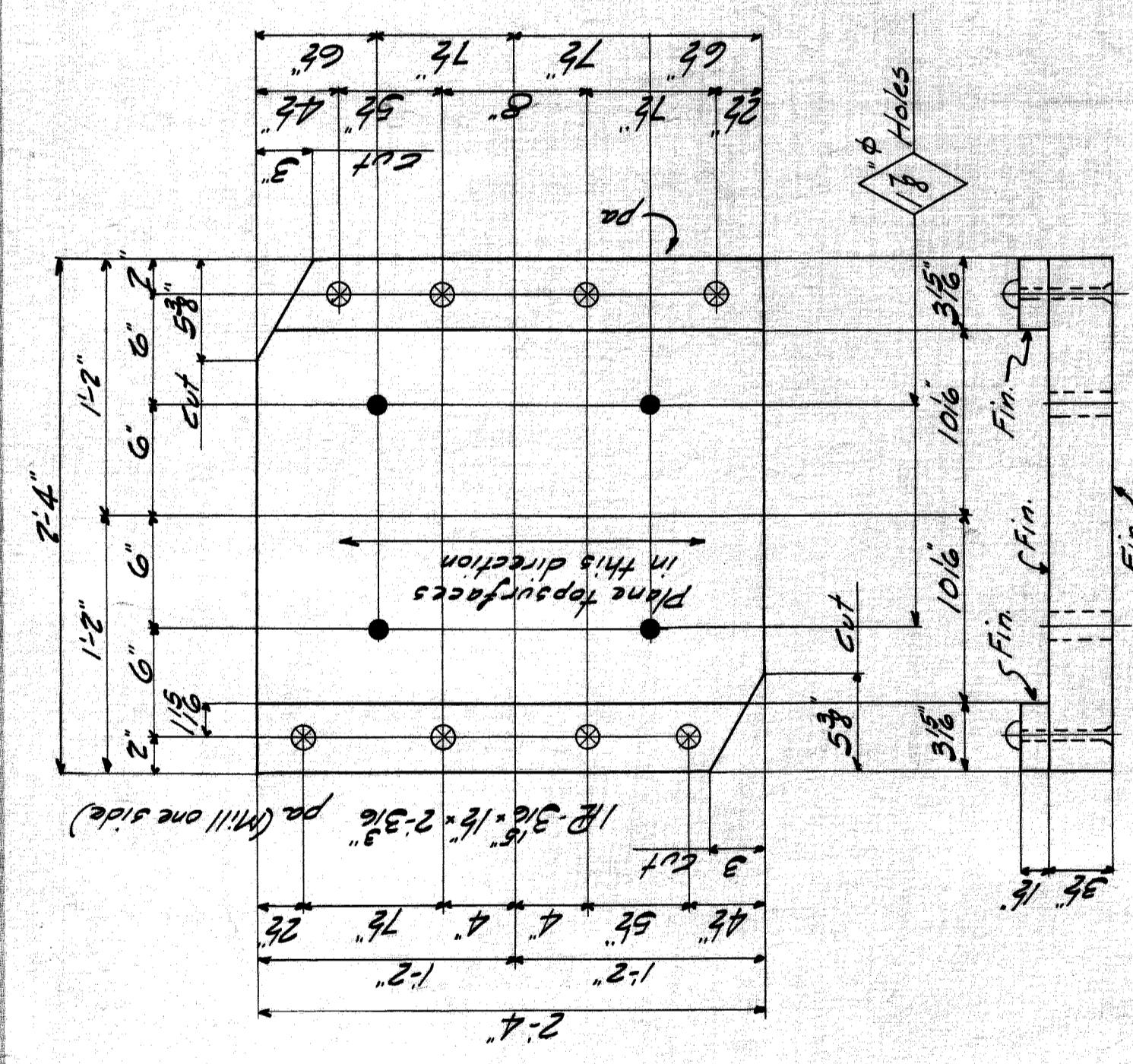


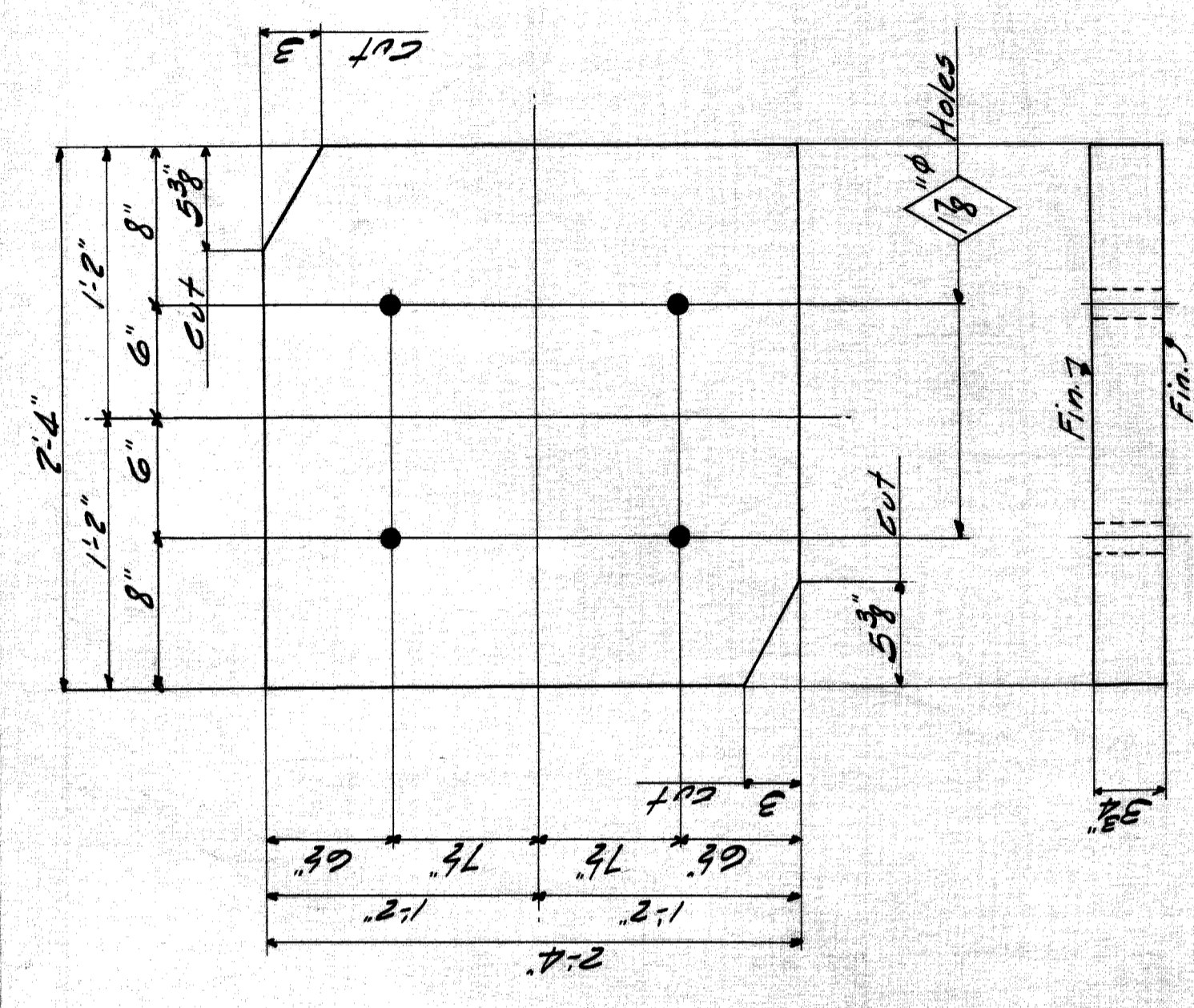
**CAST STEEL ANNEALED  
UPPER SHOES  
PART No. B317  
1/8" REQUIRED**



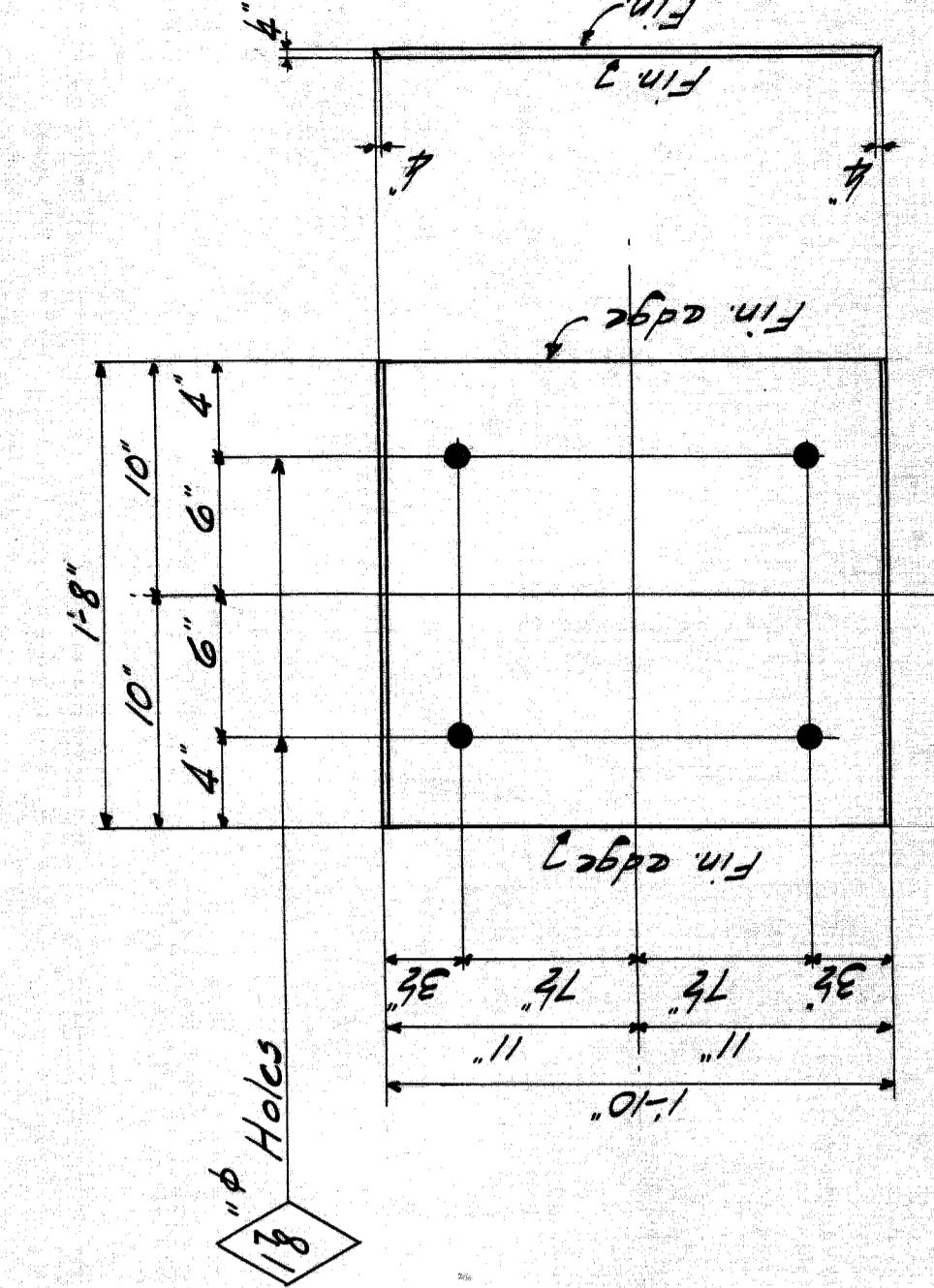
**CAST STEEL ANNEALED  
LOWER SHOES  
PART No. B318  
1/8" REQUIRED**



**1-Expansion Bearing Plates - P1  
1-Slab - 28" x 36" x 2.4" (Mill 7 sides)**

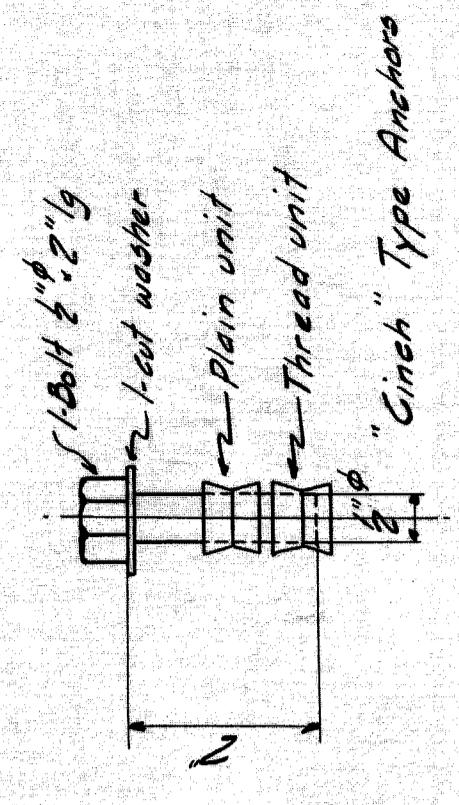


**8-Fixed Bearing Plates - P2  
1-Slab - 28" x 36" x 2.4" (Mill 7 sides)**

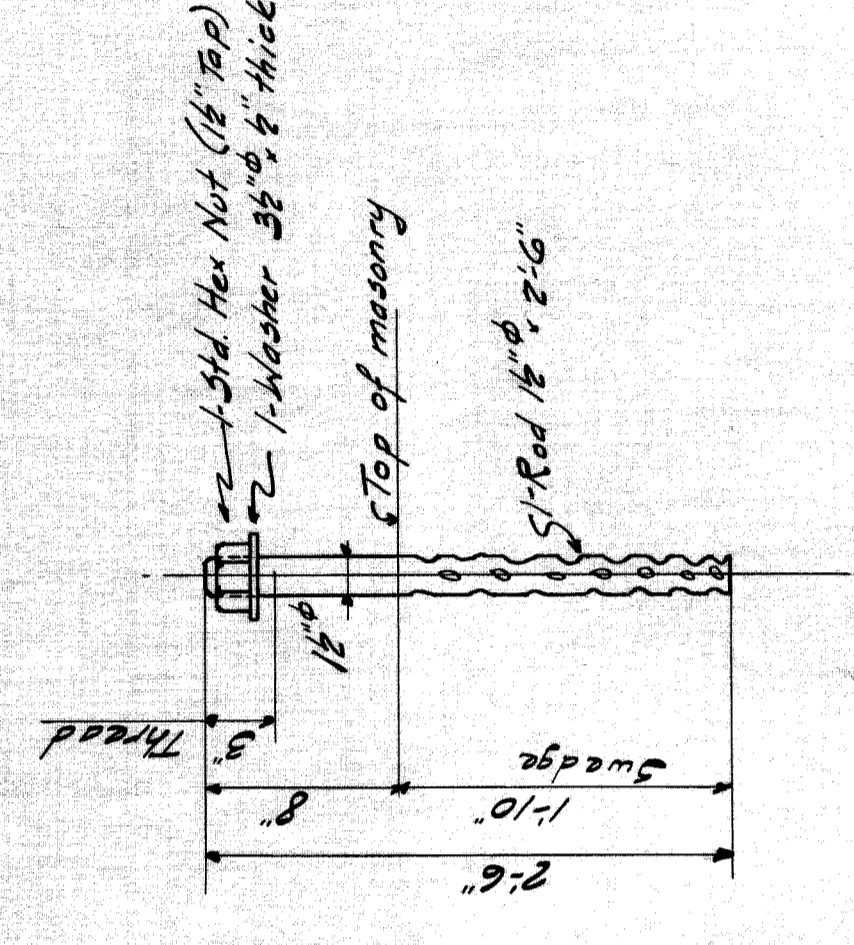


**8-Slide Plates - P3  
1-Rolled Phosphor Bronze Plate 20" x 4" x 1/16" (Mill Top & Bot & 2 Edges)**

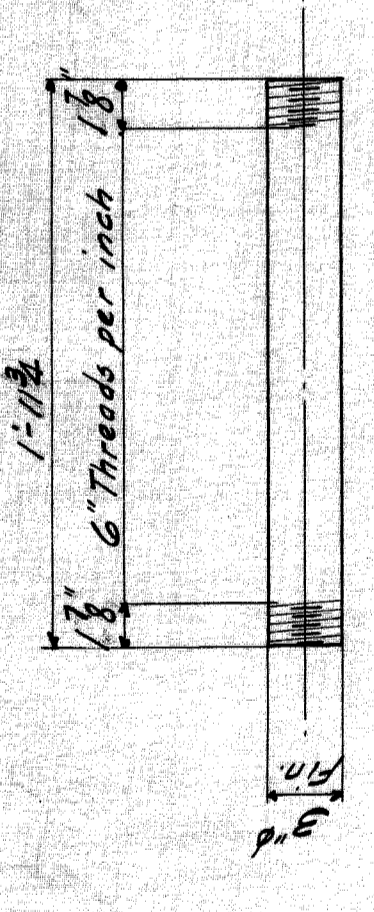
**24-Expansion Bolts - AB2**



**64-Anchors Bolts - AB1**

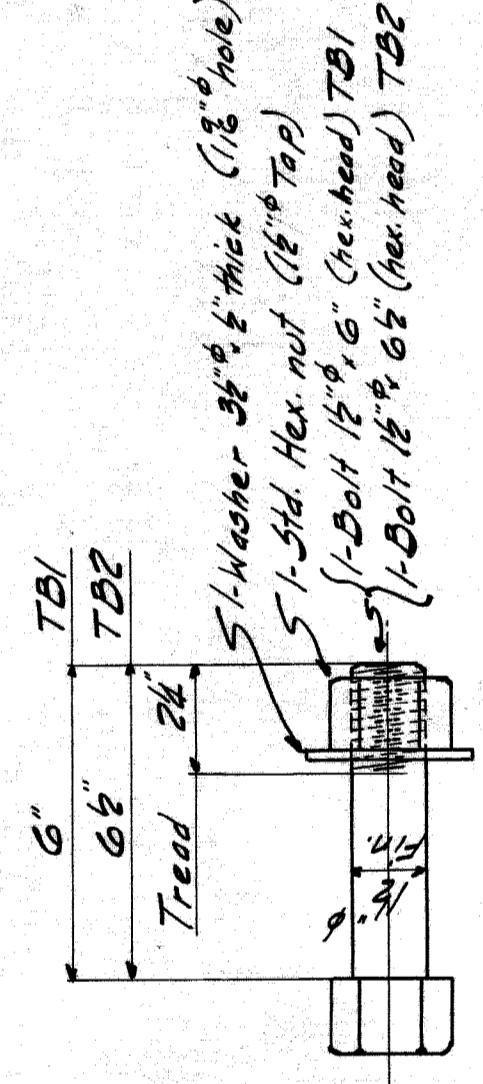


**16-Pins - PNI**

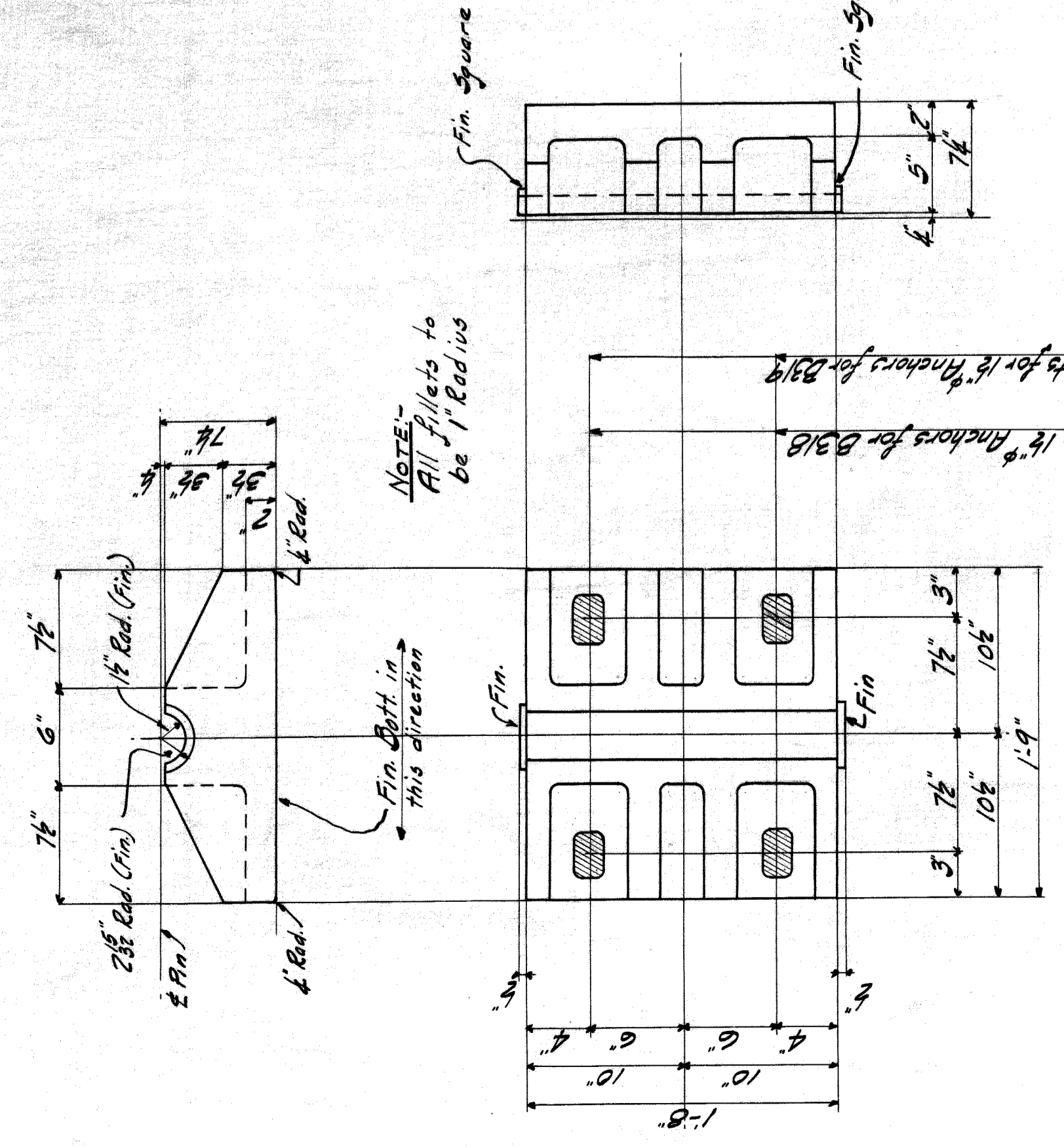


**32-Lomas Nuts - P5  
Cold Rolled Steel Bar 3" x 4" x 1/4"**

**NOTE:** Shop to fit Lomas nuts and Pins to shoes before shipment to insure proper fit.



**48-Turned Bolts - TBI  
1/6-Turned Bolts - TP2**



**CAST STEEL ANNEALED  
LOWER SHOES  
PART No. B318  
1/8" REQUIRED**

**ERECTOR NOTE:**  
For Location of steel shown on this sheet  
See Bethlehem Steel Co. Contract CK 3051 Sht. #E1

**MICHIGAN STATE HIGHWAY DEPARTMENT**  
MURRAY D. VAN WAGONER - COMMISSIONER  
WAYNE CO.  
TWP. 11E  
SEC. 1 T. 15 R. 11E  
BRIDGE FILE NO. X1 OF 82-22-20 ROAD SEVEN MILE ROAD STA.  
CROSSING GRAND TRUNK HIGHWAY E.C. IN CITY OF DETROIT

**BETHLEHEM STEEL COMPANY**  
**BUFFALO WORKS**  
**SHOE DETAILS**

APPROVED: \_\_\_\_\_ DATE: \_\_\_\_\_  
CHECKED BY: \_\_\_\_\_  
DRAWN BY: AD  
SCALE: 1/8" = 1'-0"  
SHEET: 1 OF 1

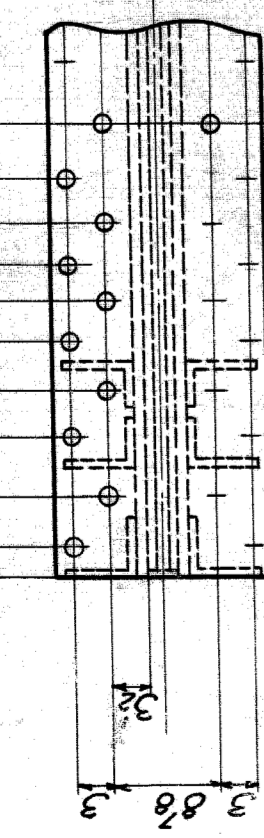
HK 315

**REVISIONS**

NO.	DESCRIPTION	DATE	BY

**Events:** 3/6  
**Open holes:** - As noted.  
**Beams:** - Holes marked "P.T." shall be drilled to size thru metal Template 1" thick.  
**Mill:** - As noted.  
**Paint:** - One coat of M.S.G. mixture 7" surface to be painted in contact in shop or field not to be painted. Machine finished surfaces to be coated with a hot mixture of white lead and follow immediately after finishing.

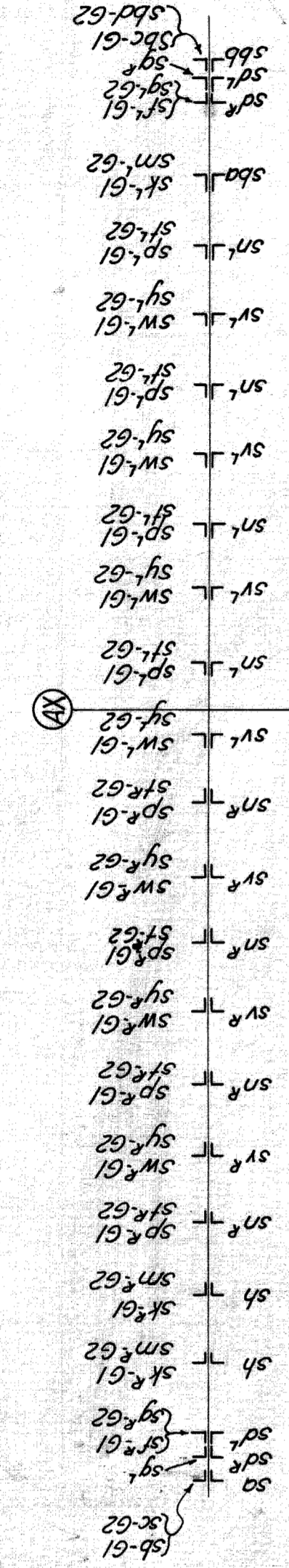
3.34 5.34 5.3 3.34 4.4 Details and dimensions not shown same as for bottom flg except for bracing pls. and all rivets to be full head shop rivets.



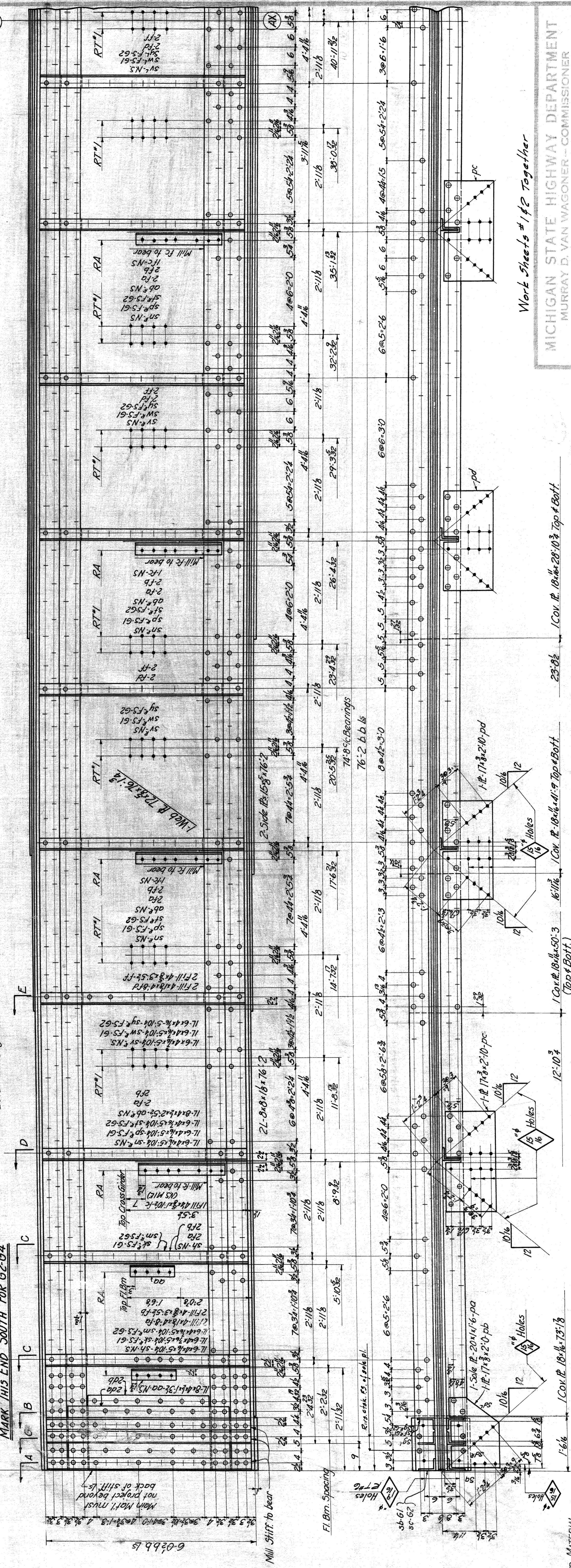
1 Cor. R. 18x16x16-2

MARK THIS END NORTH FOR G1-G3  
MARK THIS END SOUTH FOR G2-G4

2L-8x8x16x16-2  
2 Side Rs. 15x8x16-2



STIFFENER DIAGRAM



END MATERIAL  
 1L-6x4x8-5-104-50-(NS-MIE)  
 1L-6x4x8-5-104-50-(FS-MIE) For G1  
 1L-6x4x8-5-104-50-(FS-MIE) For G2  
 2L-6x4x8-5-104-50-(NS-MIE)  
 1L-6x4x8-5-104-50-(FS-MIE) For G1  
 2L-6x4x8-5-104-50-(FS-MIE) For G2  
 2F-11-4x8-3-5-104-50-(NS-MIE)  
 2F-11-25x8-3-5-104-50-(NS-MIE)

ONE-GIRDER-G1) Alike except for direction mark  
 ONE- do -G4) direction mark  
 3- do -G2) Alike except for direction mark  
 3- do -G3) direction mark

LIFTING WT- TONS

1 Cor. R. 18x16x16-3  
16x16  
1 Cor. R. 18x16x16-1:9 Top & Bott.  
23-8x8  
1 Cor. R. 18x16x28-10-3 Top & Bott.

Rev. 10/28

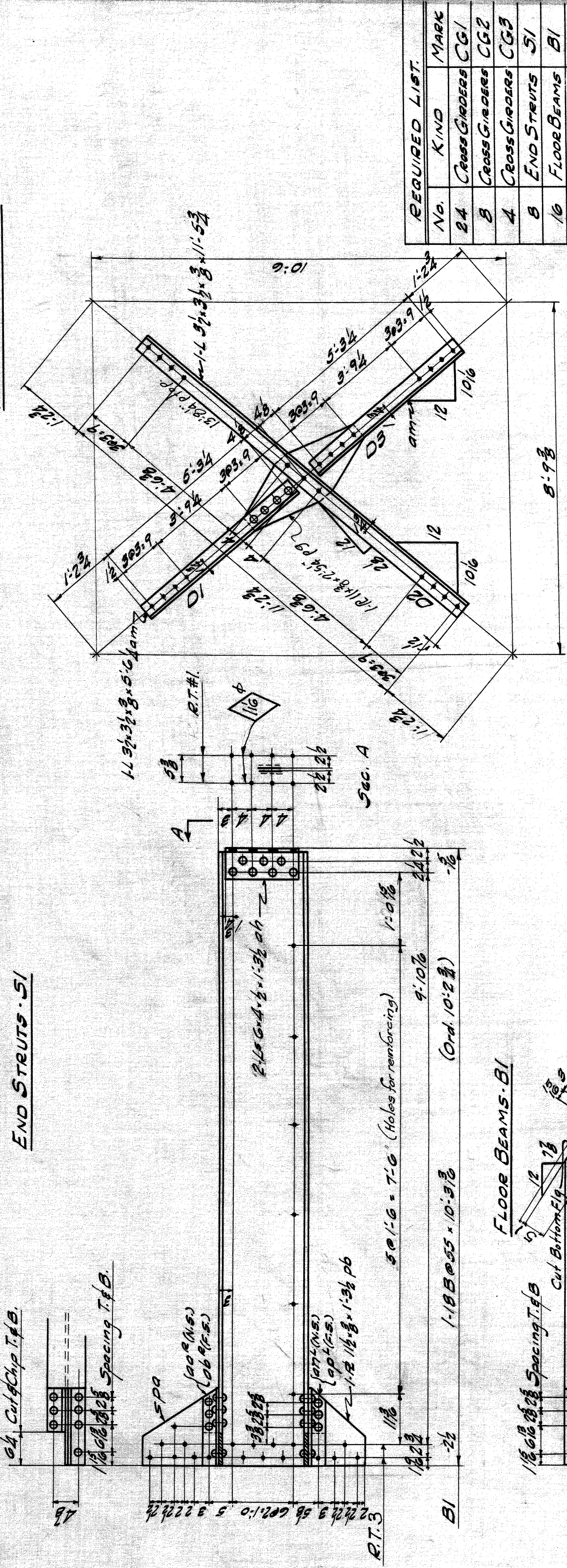
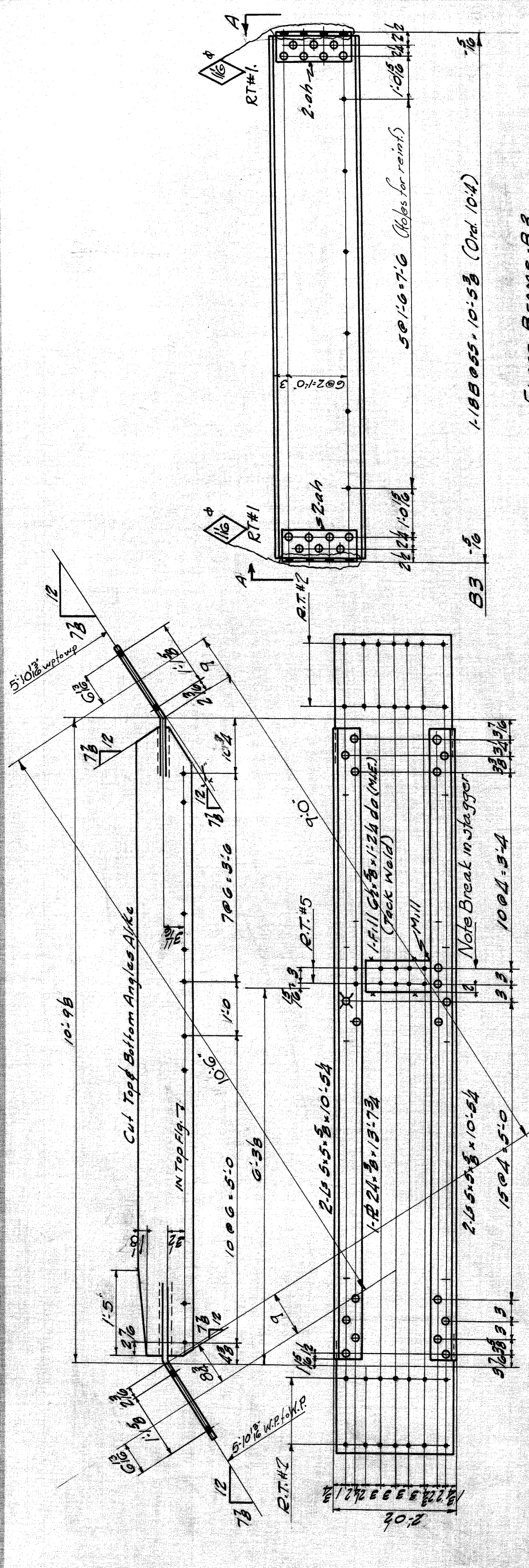
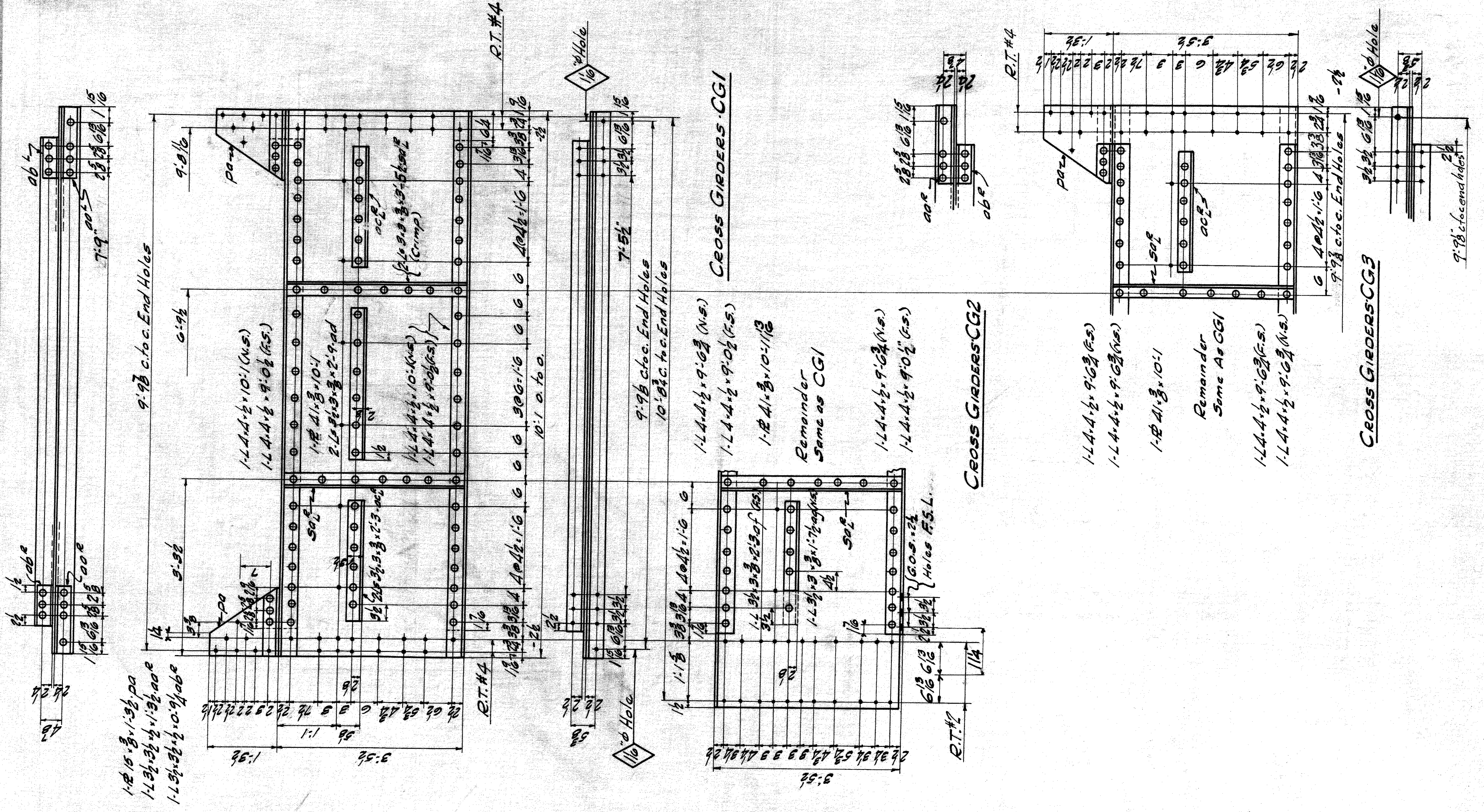
Work Sheets # 1 & 2 Together  
 MICHIGAN STATE HIGHWAY DEPARTMENT  
 MURRAY D. VAN WAGONER - COMMISSIONER  
 SEC. 1 T. 15 R. 11E  
 BRIDGE FILE NO. X100-82-22-20 ROAD SEVEN MILE ROAD  
 CROSSING GRAND TRUNK WESTERN R.R. IN CITY OF DETROIT  
 BETHLEHEM STEEL COMPANY  
 BUFFALO WORKS  
 GIRDER DETAILS

DESIGNED BY	SMITH	9/29/37
CHECKED BY	M.S.	10/1/37
APPROVED BY	F.W.	10/1/37
SHEET	1	5

CK 3051

M





REQUIRED LIST	No.	KIND	MARK
	84	Cross Girders	CG1
	8	Cross Girders	CG2
	4	Cross Girders	CG3
	8	End Struts	S1
	16	Floor Beams	B1
	8	Floor Beams	B2
	48	Floor Beams	B3
	32	Diagonals	D1
	32	Diagonals	D2
	32	Diagonals	D3

**Diagonals D1-D2-D3**

Notes:  
 Rivets: 3/8"  
 Holes: 1/8" unless noted.  
 Reaming: See Sheet #1  
 Milling: As Noted for fill da on S1  
 Paint: One coat M.S.H.D. minature #1  
 Surfaces in contact in shop or field are not to be painted.

**MICHIGAN STATE HIGHWAY DEPARTMENT**  
 MURRAY D. VAN WAGONER - COMMISSIONER  
 TWP. WAYNE CO.

SEC. T. 15 R. 11 E.  
 BRIDGE FILE NO. XI 0788-22-20. ROAD SEVEN MILE ROAD  
 CROSSING GRAND TRUNK WESTERN R.R. IN CITY OF DETROIT

BETHLEHEM STEEL COMPANY  
 BUFFALO WORKS

**STEEL DETAILS**

APPROVED: \_\_\_\_\_ DATE: \_\_\_\_\_  
 CHECKED: \_\_\_\_\_ DATE: \_\_\_\_\_  
 DESIGNED: \_\_\_\_\_ DATE: \_\_\_\_\_

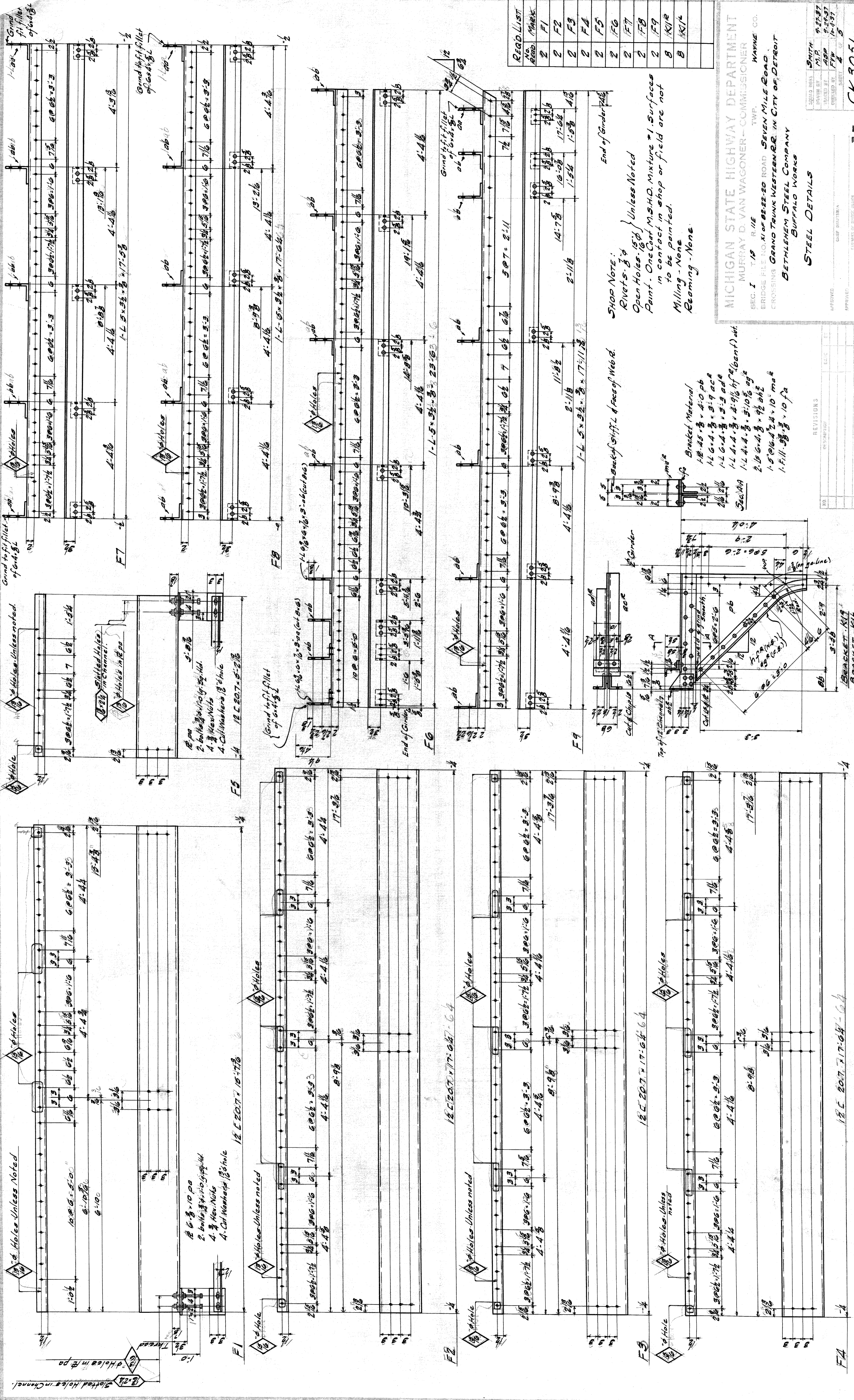
REVISIONS

NO.	DESCRIPTION	DATE	BY

SMITH 9-22-37  
 D.A. 9-22-37  
 F.W. 10-1-37  
 STEEL 10-1-37

CK 3051

M



NO.	REVISION	DATE
1	AS SHOWN	
2	F1	
3	F2	
4	F3	
5	F4	
6	F5	
7	F6	
8	F7	
9	F8	
10	F9	
11	F10	

SHOP NOTE:  
 Rivets - 3/4" Unless Noted  
 Open Holes - 1 1/2" dia. Unless Noted  
 Paint - One Coat M.S.H.D. Mixture #1. Surfaces in contact in shop or field are not to be painted.  
 Milling - None  
 Beaming - None

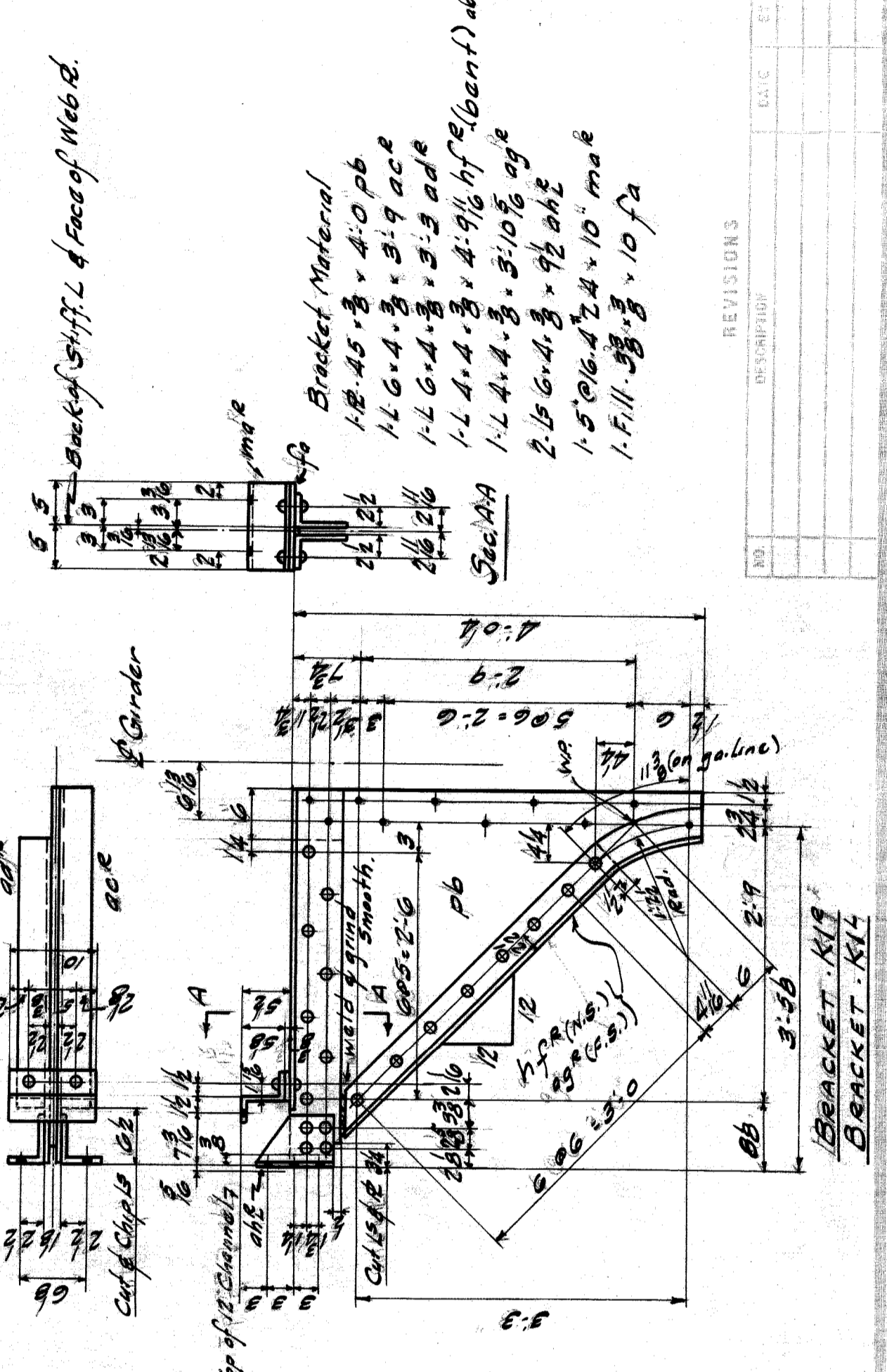
**MICHIGAN STATE HIGHWAY DEPARTMENT**  
 MURRAY D. VAN WAGONER - COMMISSIONER  
 SEC. 1 T. 15 R. 11 E. TWP. MAYNE CO.  
 BRIDGE FILE NO. XI OF 82-20 ROAD SEVEN MILE ROAD  
 CROSSING GRAND TRUNK WESTERN R.R. IN CITY OF DETROIT

**BETHLEHEM STEEL COMPANY**  
 BUFFALO WORKS

**STEEL DETAILS**

APPROVED: \_\_\_\_\_  
 CHECKED BY: \_\_\_\_\_  
 DRAWN BY: \_\_\_\_\_  
 DESIGNED BY: \_\_\_\_\_

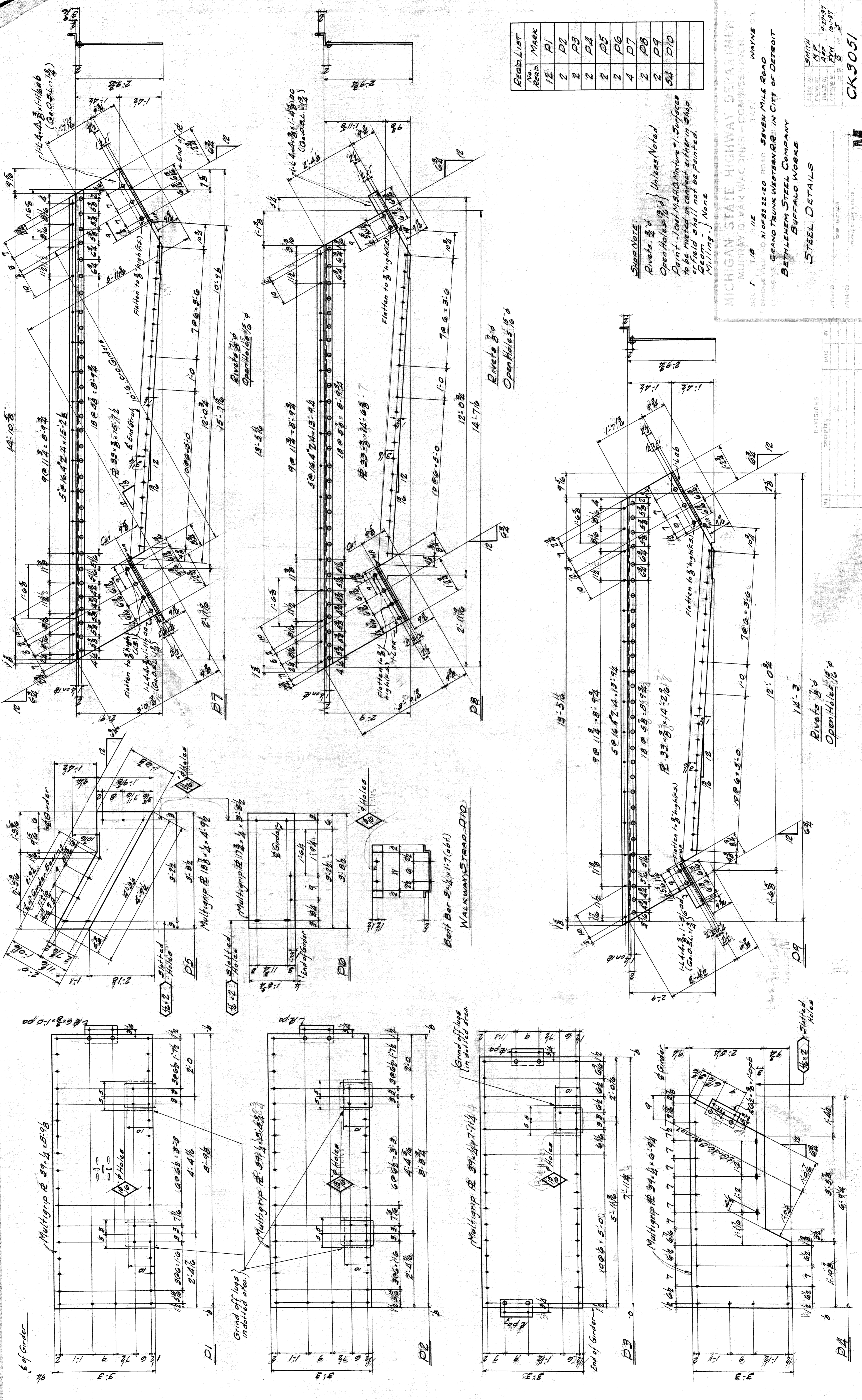
SMITH 9-27-37  
 F.W. 9-27-37  
 F.W. 10-1-37  
 SHEET 4 OF 5  
**CK 3051**



NO.	REVISIONS	DATE
1	AS SHOWN	

12C 20.7 x 17.64 - 64

F4



Revol List	No.	Mark
	12	P1
	2	P2
	2	P3
	2	P4
	2	P5
	2	P6
	4	P7
	2	P8
	2	P9
	54	P10

Shop Note:  
 Rivets 3/4  
 Open Holes 1/8  
 Unless Noted  
 Paint - 1 coat M.S.D. Mixture w/ Surfaces  
 to be riveted in contact either in Shop  
 or field shall not be painted.  
 Milling - None

MICHIGAN STATE HIGHWAY DEPARTMENT  
 MURRAY D. VAN WAGONER - COMMISSIONER  
 SECTION 1 15 FILE WAYNE CO.  
 BRIDGE FILE NO. X10722-20 ROAD SEVEN MILE ROAD  
 CROSSING GRAND TRUNK WESTERN R.R. IN CITY OF DETROIT  
 BETHLEHEM STEEL COMPANY  
 BUFFALO WORKS  
 STEEL DETAILS

DESIGNED BY	SMITH
DRAWN BY	M.P.
CHECKED BY	A.P.
DATE	9-27-37
APPROVED BY	F.W.
DATE	10-1-37
PROJECT NO.	5
SCALE	AS SHOWN

CK 3051

M

NO.	REVISIONS	DATE

Rivets 3/4  
 Open Holes 1/8

Rivets 3/4  
 Open Holes 1/8

Rivets 3/4  
 Open Holes 1/8

Rivets 3/4  
 Open Holes 1/8

Rivets 3/4  
 Open Holes 1/8

Rivets 3/4  
 Open Holes 1/8

