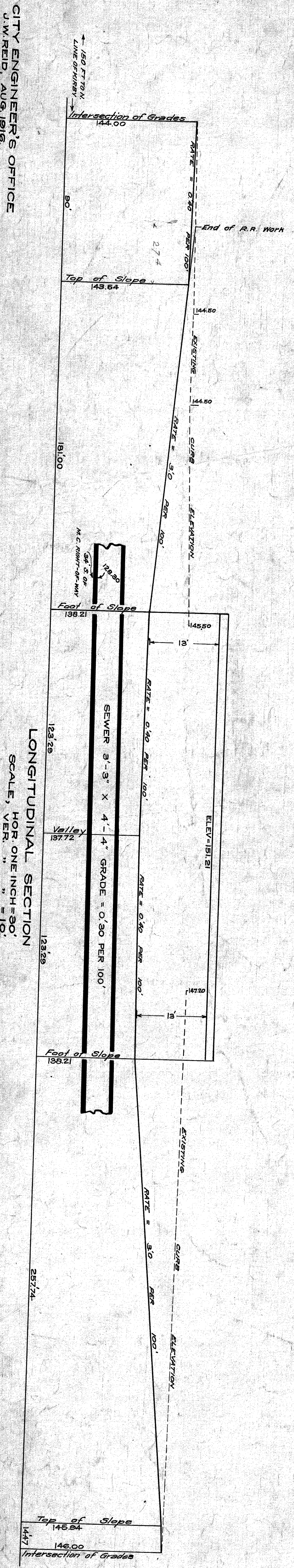


PLAN OF PROPOSED SUBWAY
IN
TWELFTH ST.
UNDER
GRAND TRUNK, NEW YORK CENT'L & M. C. R. R.'S,
DETROIT.

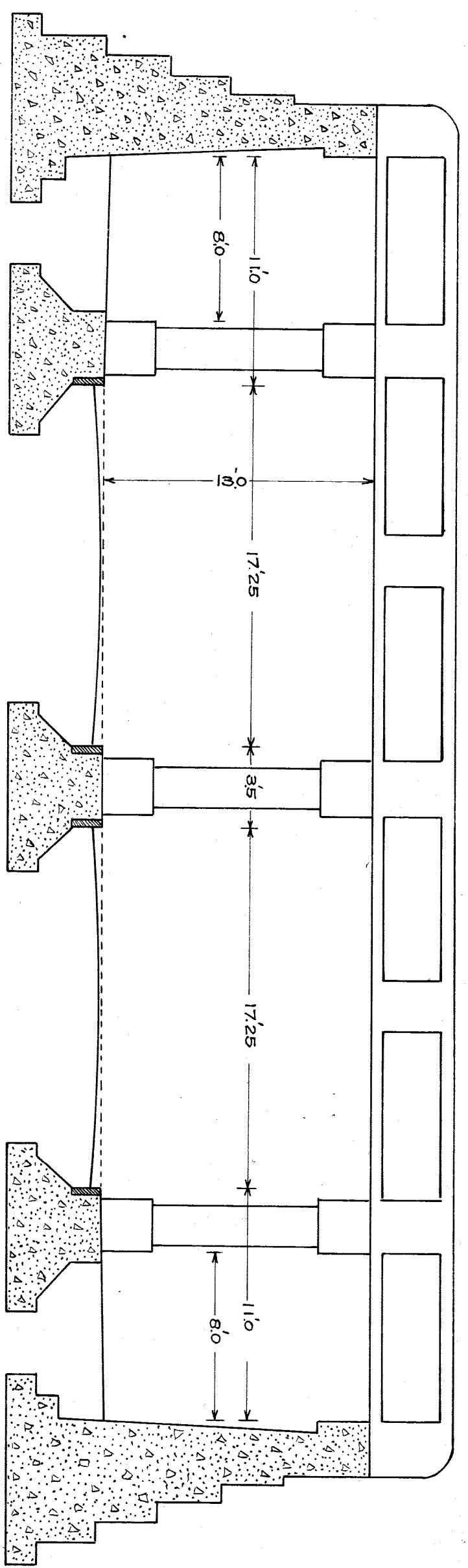
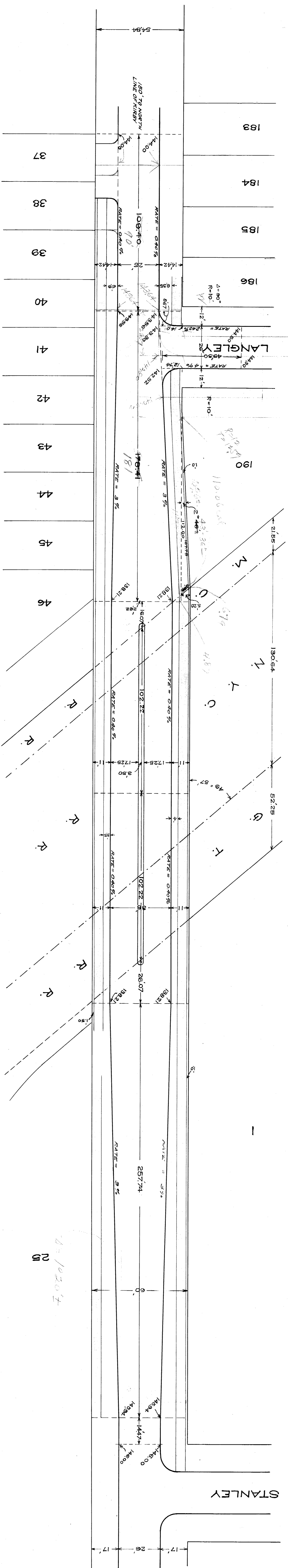
Approved: *James J. [Signature]* Jan 7, 1917
Chief Eng. - M.C.R.R.
City Engineer



CITY ENGINEER'S OFFICE
J.W. REID, AUG. 1916

CITY ENGINEER'S OFFICE
J.W. REID, AUG. 1916
4-I-104

File XII 10-1



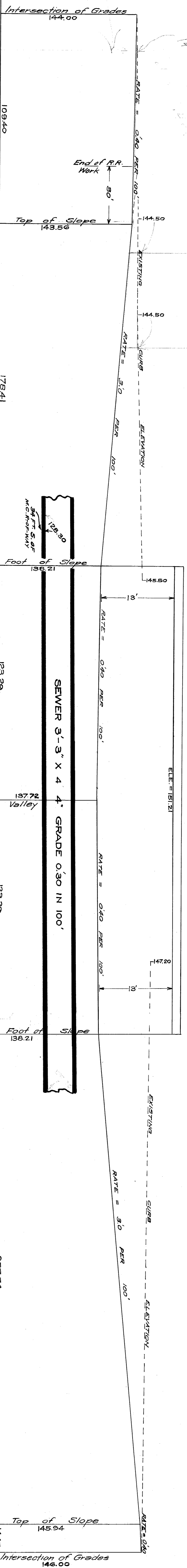
PLAN OF PROPOSED SUBWAY
IN
TWELFTH ST.
UNDER
GRAND TRUNK, NEW YORK CENT'L & M. C. R. R.'S.
DETROIT.

Approved *W. L. ...* 1916.
W. L. ... City Engineer.

See Revised Plan
Error in original survey
J.W.R.

CROSS SECTION
SCALE, ONE INCH = 6 FEET

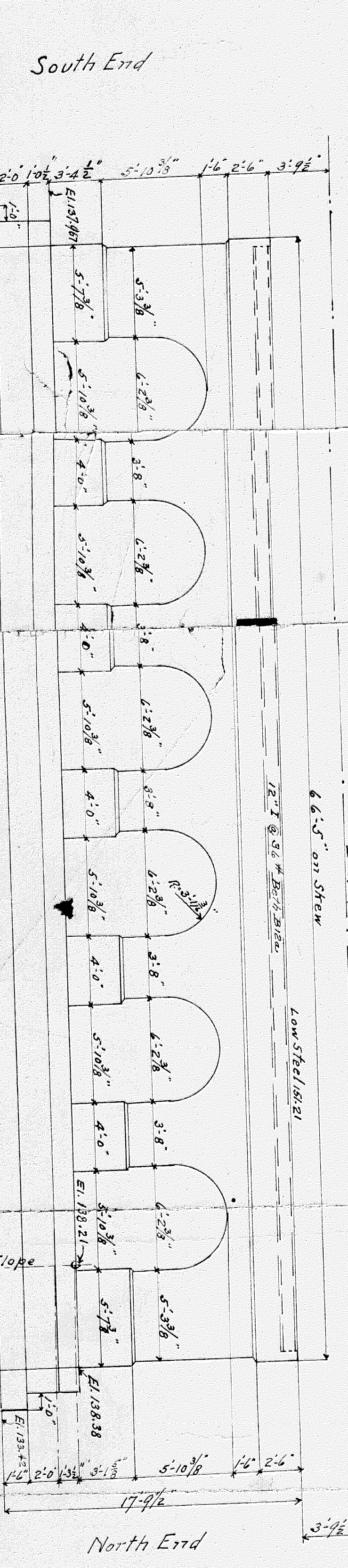
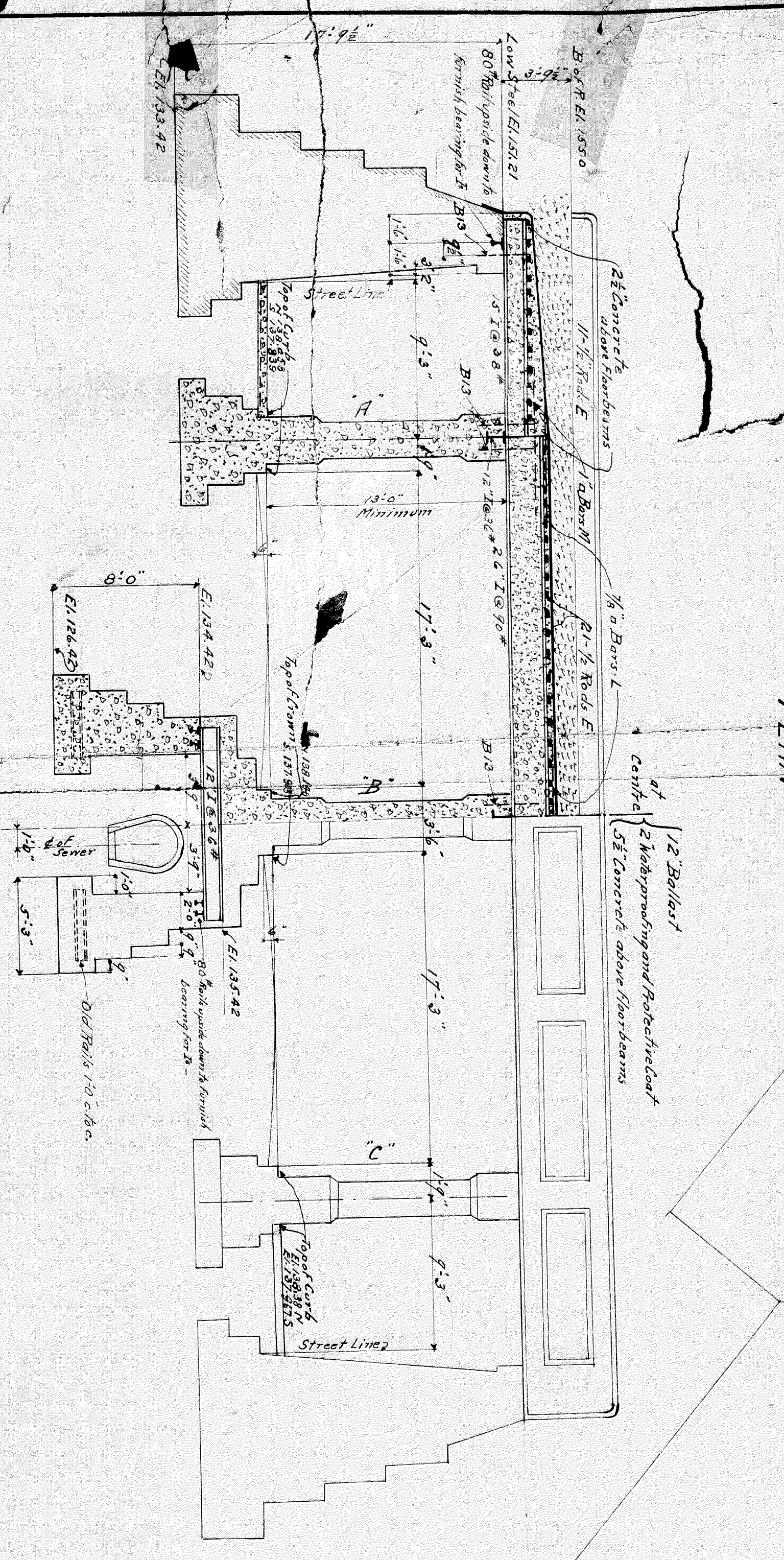
PLAN
SCALE, ONE INCH = 30 FT.



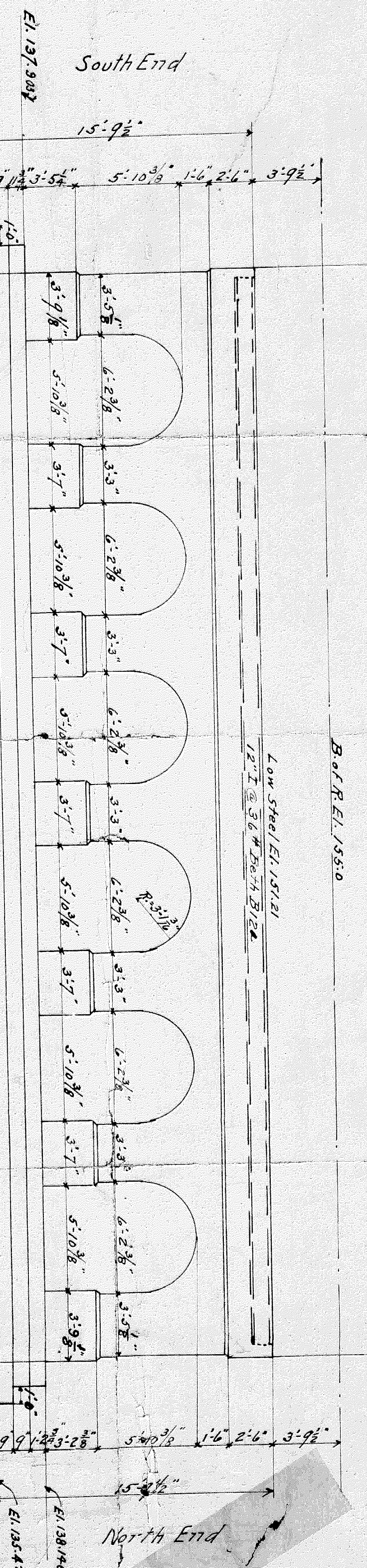
LONGITUDINAL SECTION
SCALE, HOR. ONE INCH = 30',
VERT. ONE INCH = 10'

Half Section on Line "HH"

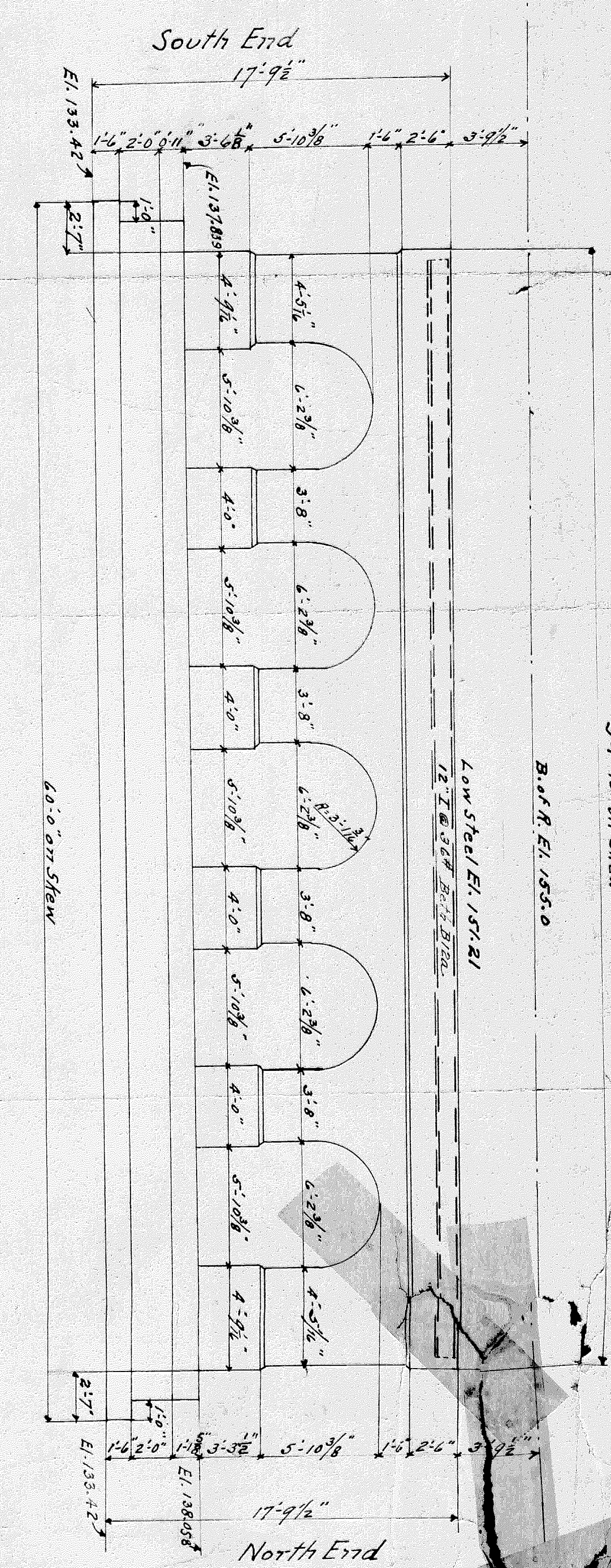
Half Elevation on Line "HH"



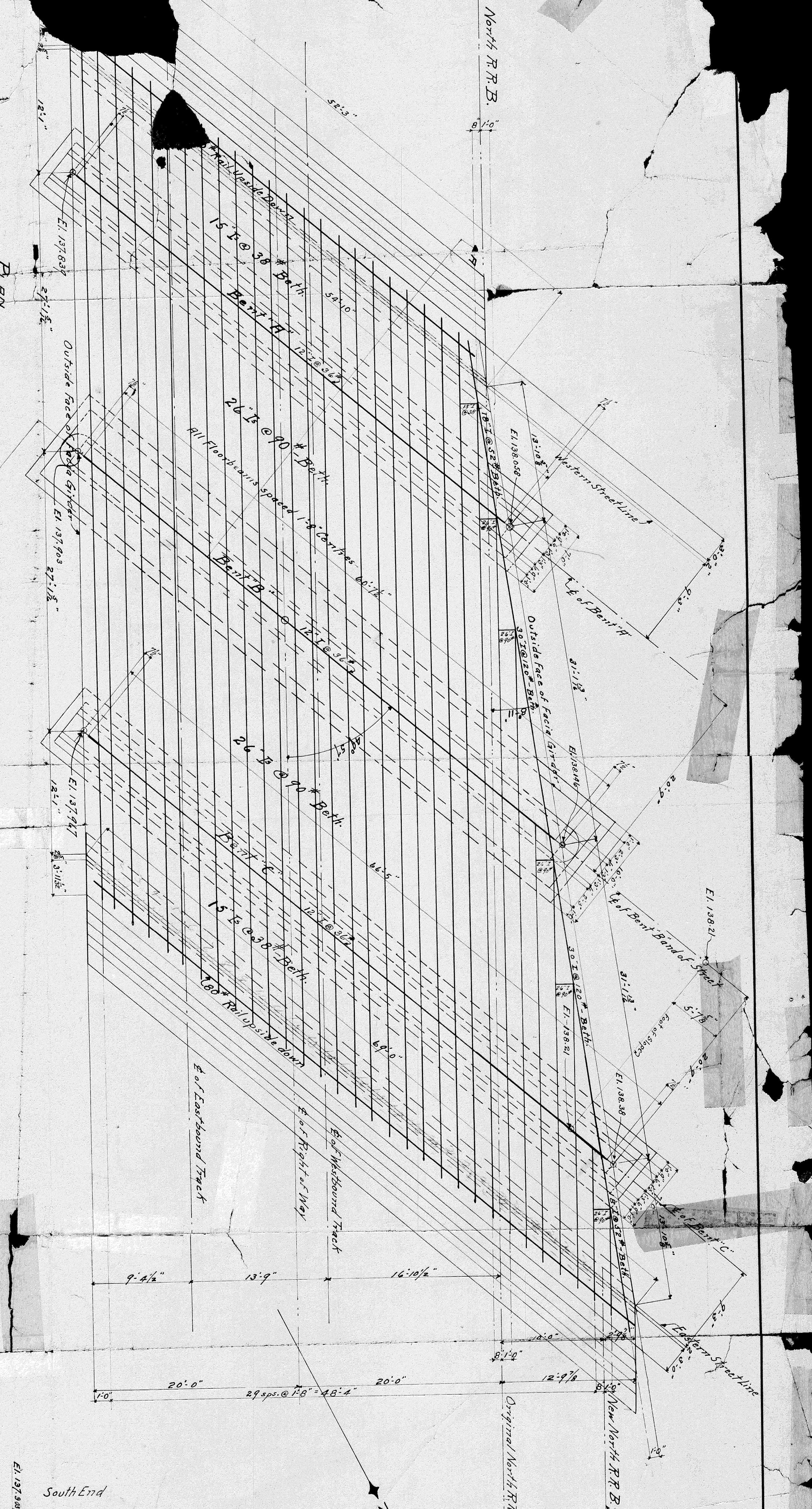
Elevation of Bent 'C'



Elevation of Bent 'B'



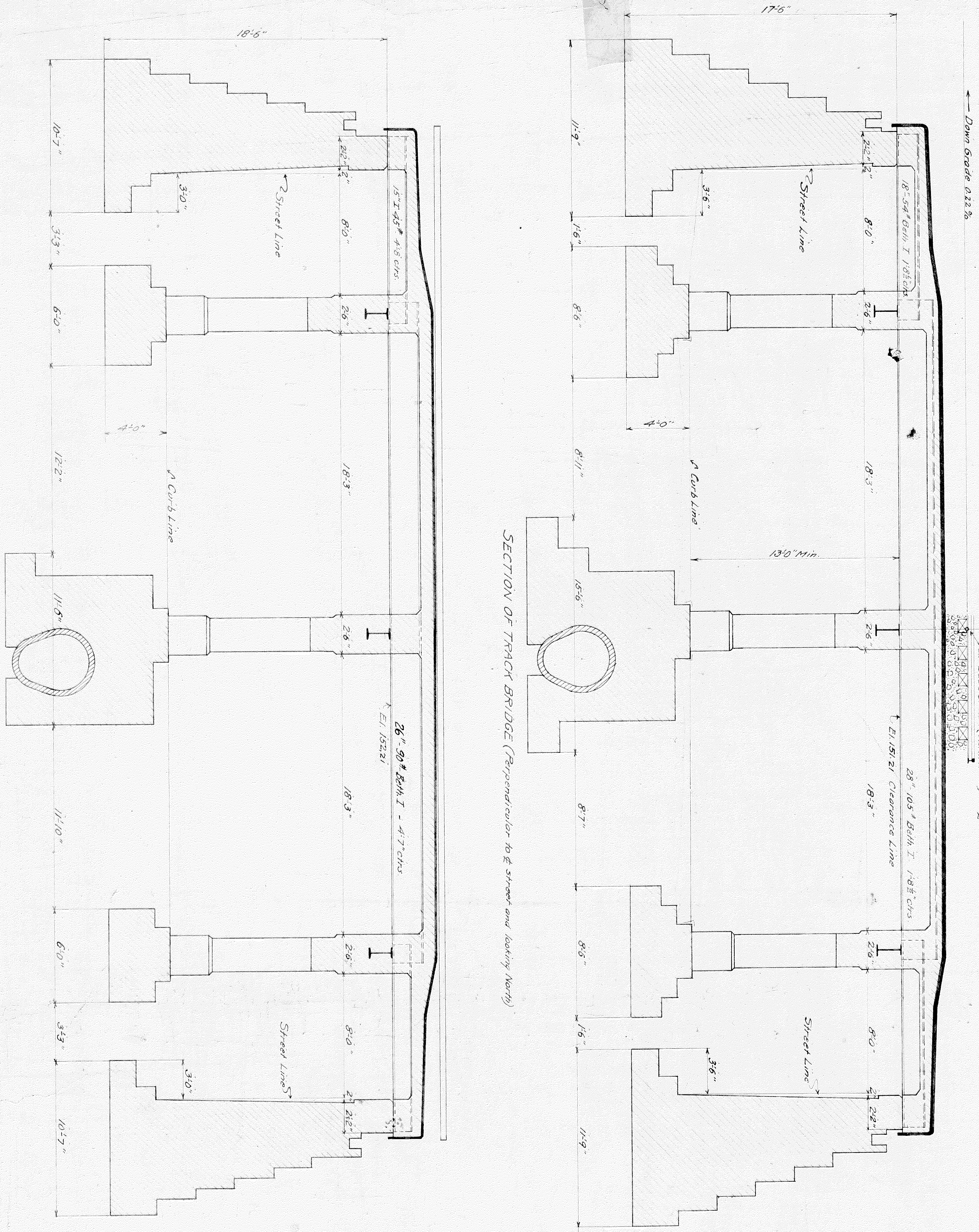
Elevation of Bent 'A'



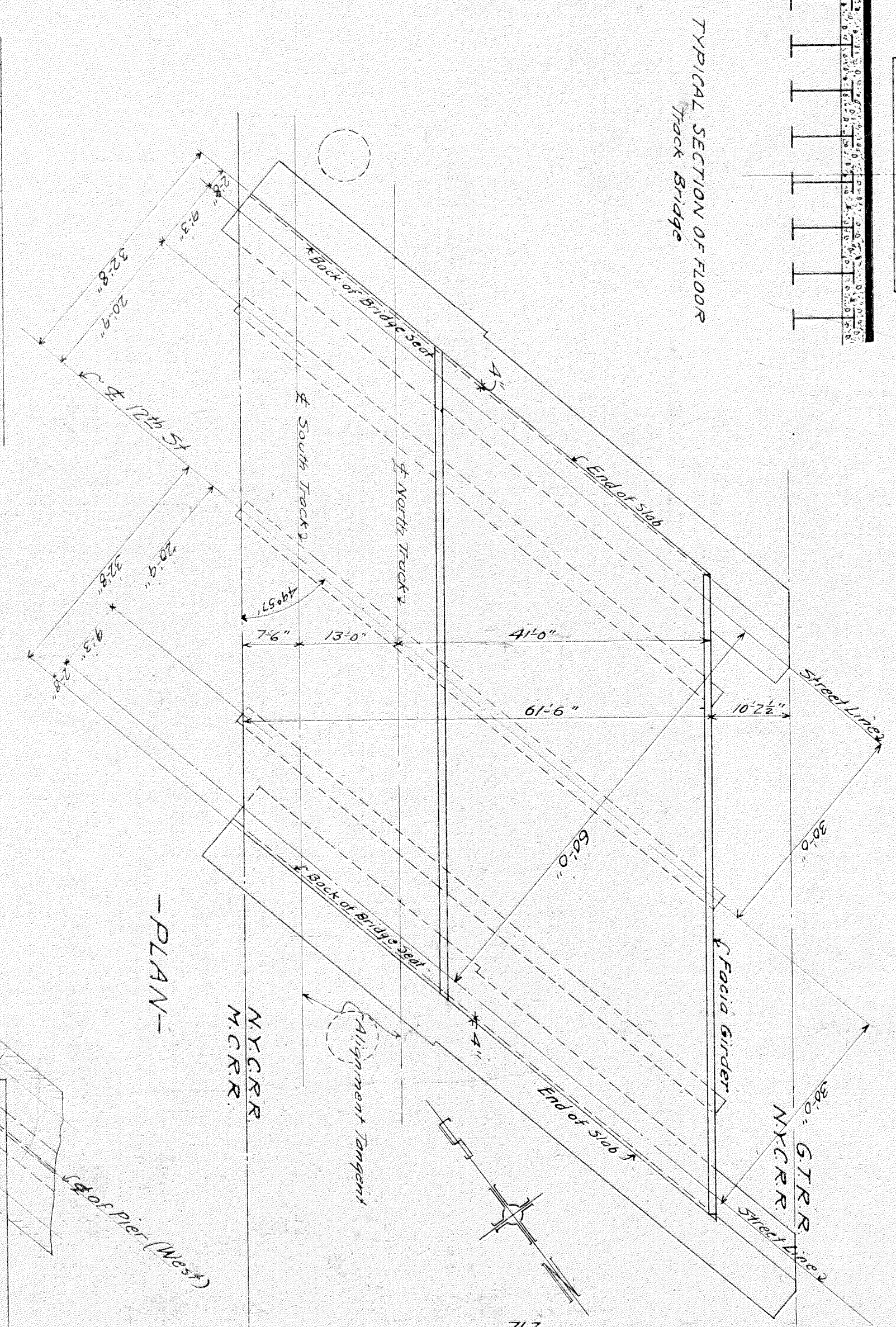
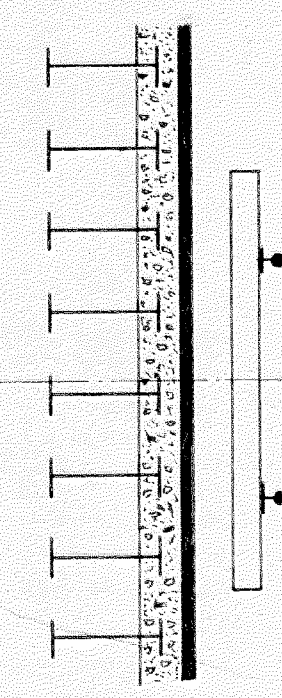
File X 10.3

GRAND TRUNK RAILWAY SYSTEM
 DIVISION, 42ND DISTRICT
 CHIEF ENGINEER
 APPROVED: [Signature]
 1916

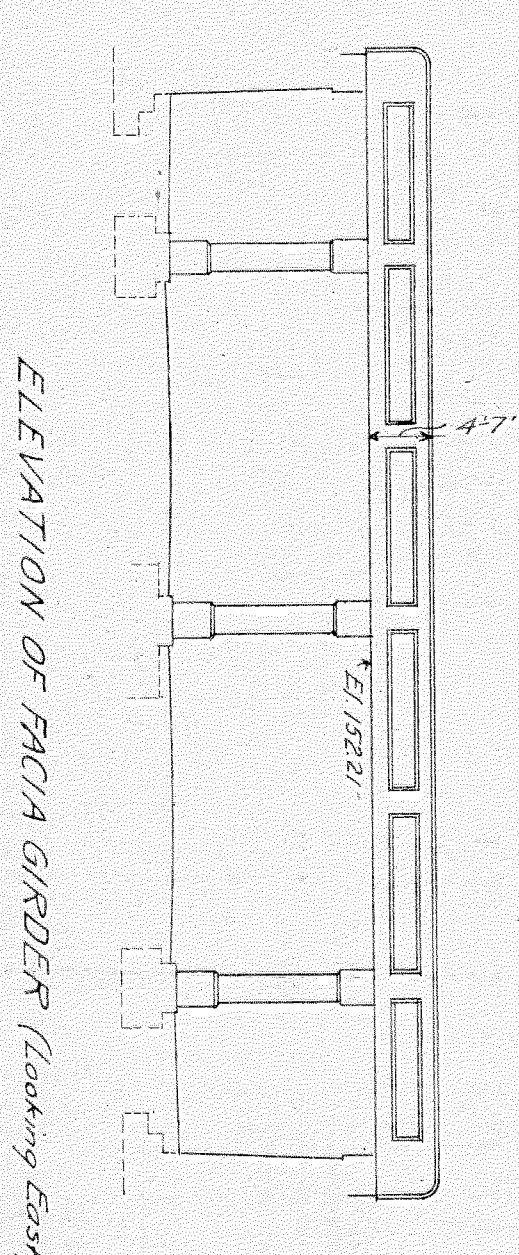
Engineer: [Signature]
 Structural Engineer
 APPROVED: [Signature]
 1916
 Chief Engineer



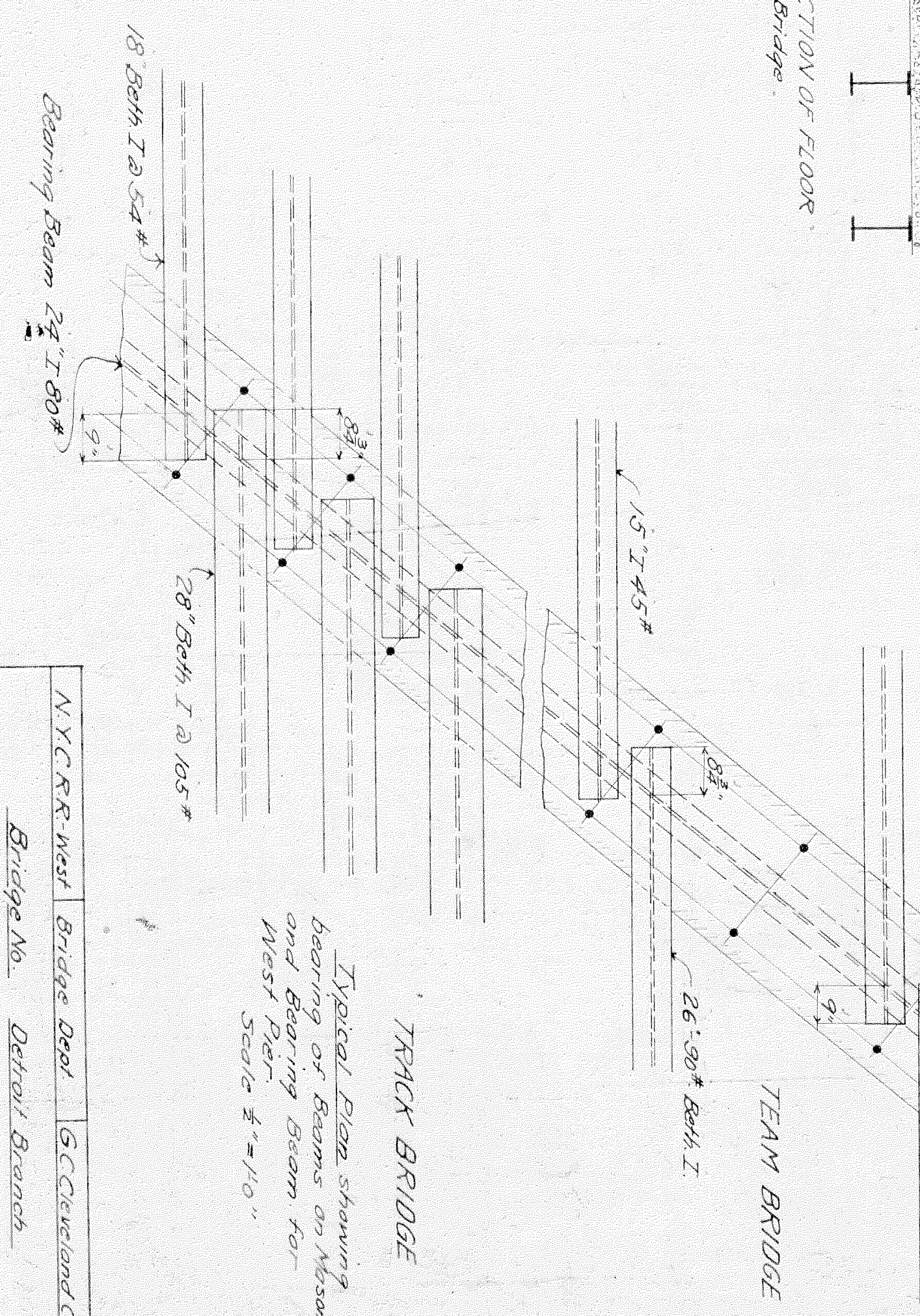
SECTION OF TEAM BRIDGE (Perpendicular to E. Street and looking North)



TYPICAL SECTION OF FLOOR Team Bridge



ELEVATION OF PAICA GIRDER (Looking East)

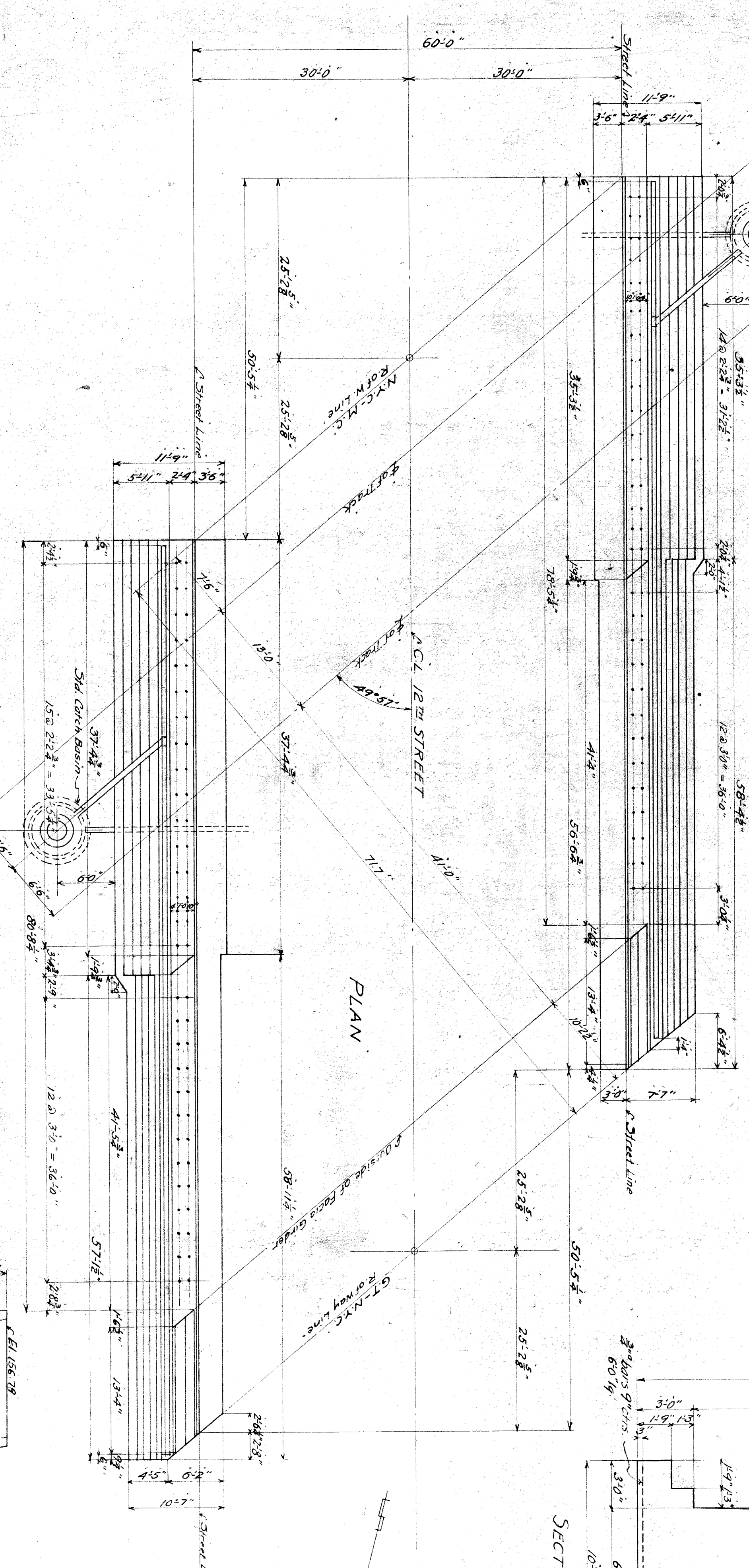
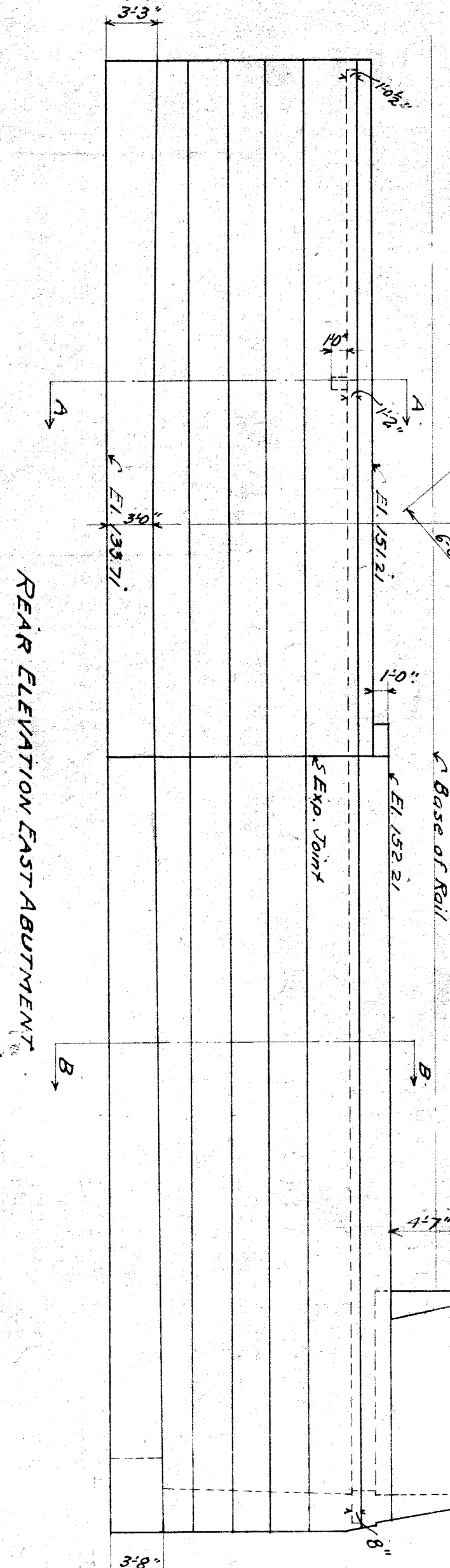
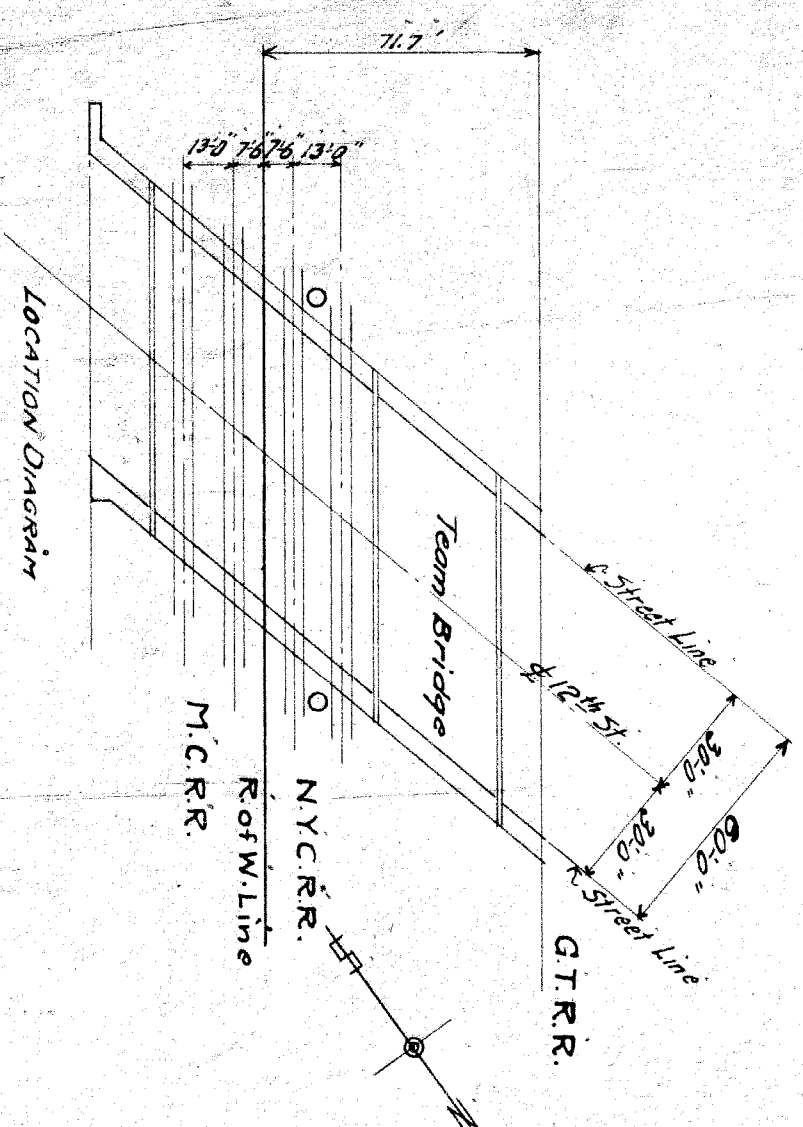


TRACK BRIDGE

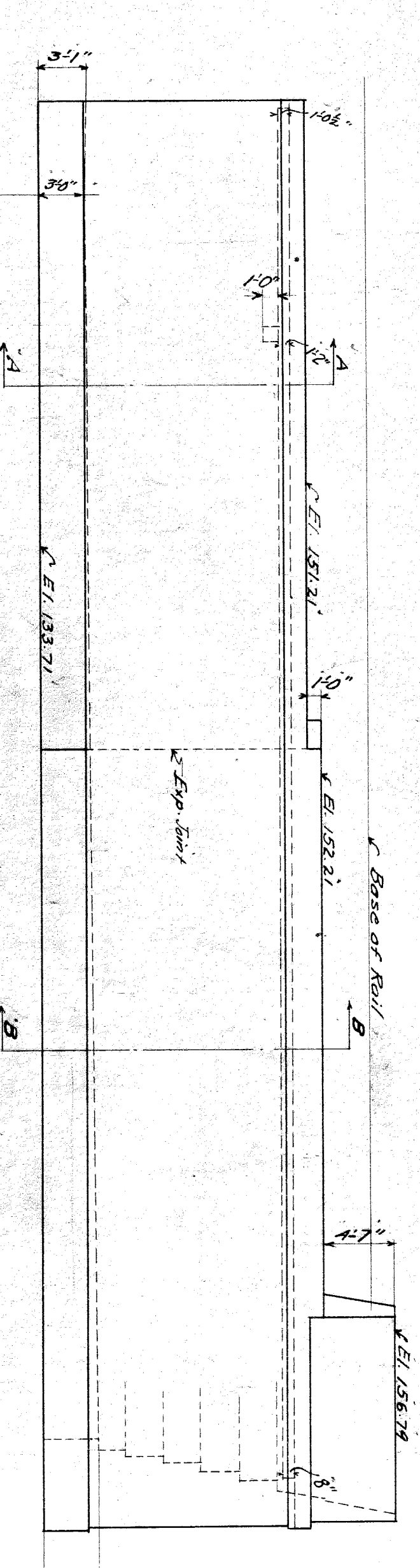
TEAM BRIDGE

File XU 10-4

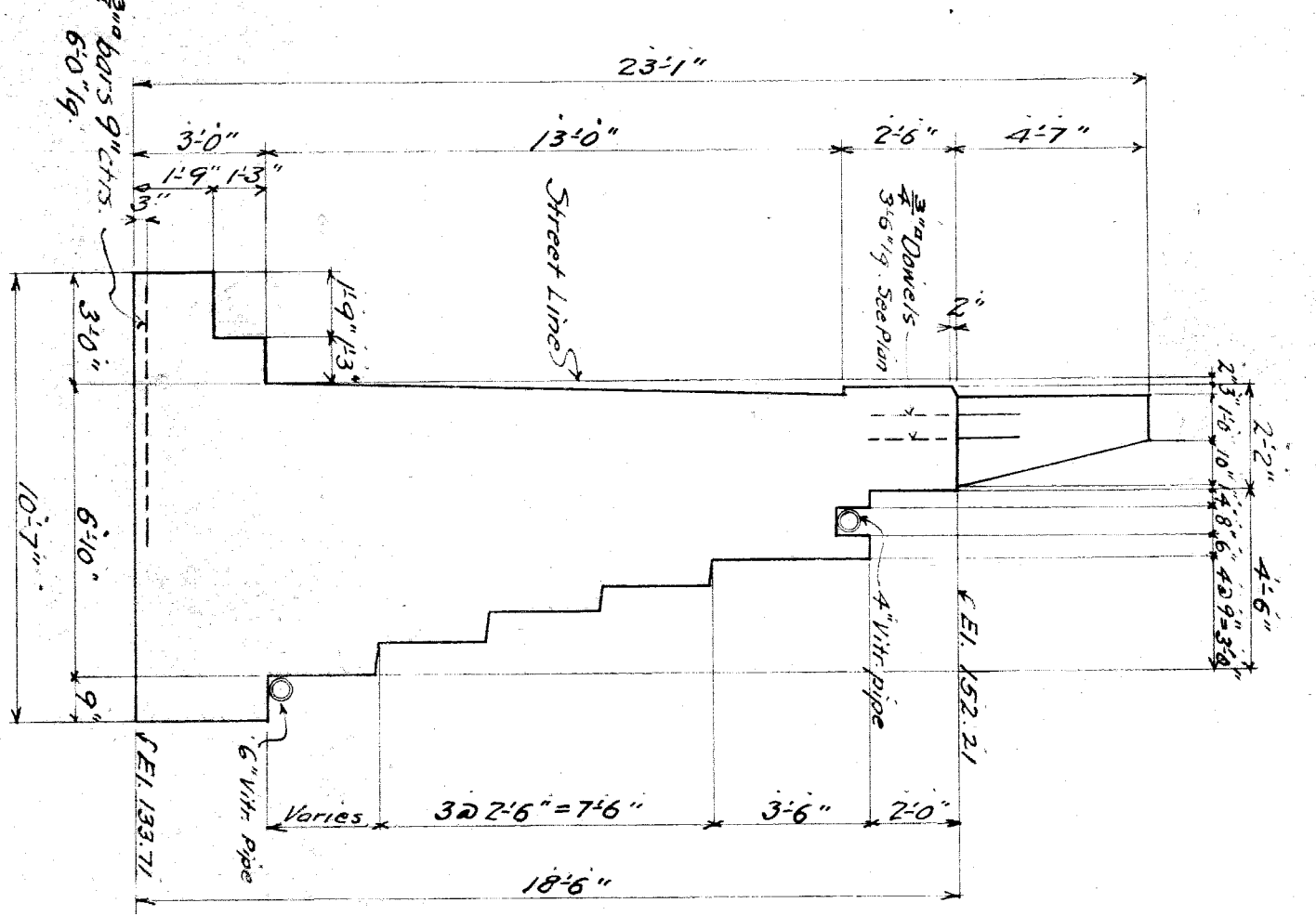
N.Y.C. & N.J. Bridge Dept.	G.C. Cleveland Ct.
Bridge No. Detroit Branch	
Over 12th Street	
Detroit, Mich.	
Masonry - General Plan	
Sheet 1 of 4	
Scale 1/8" = 1'-0"	Aug. 28, 1916
Revised 9/10/16 (E. 30th St. I. S. S. 147-2188)	B. O. G. S.
	R. I.



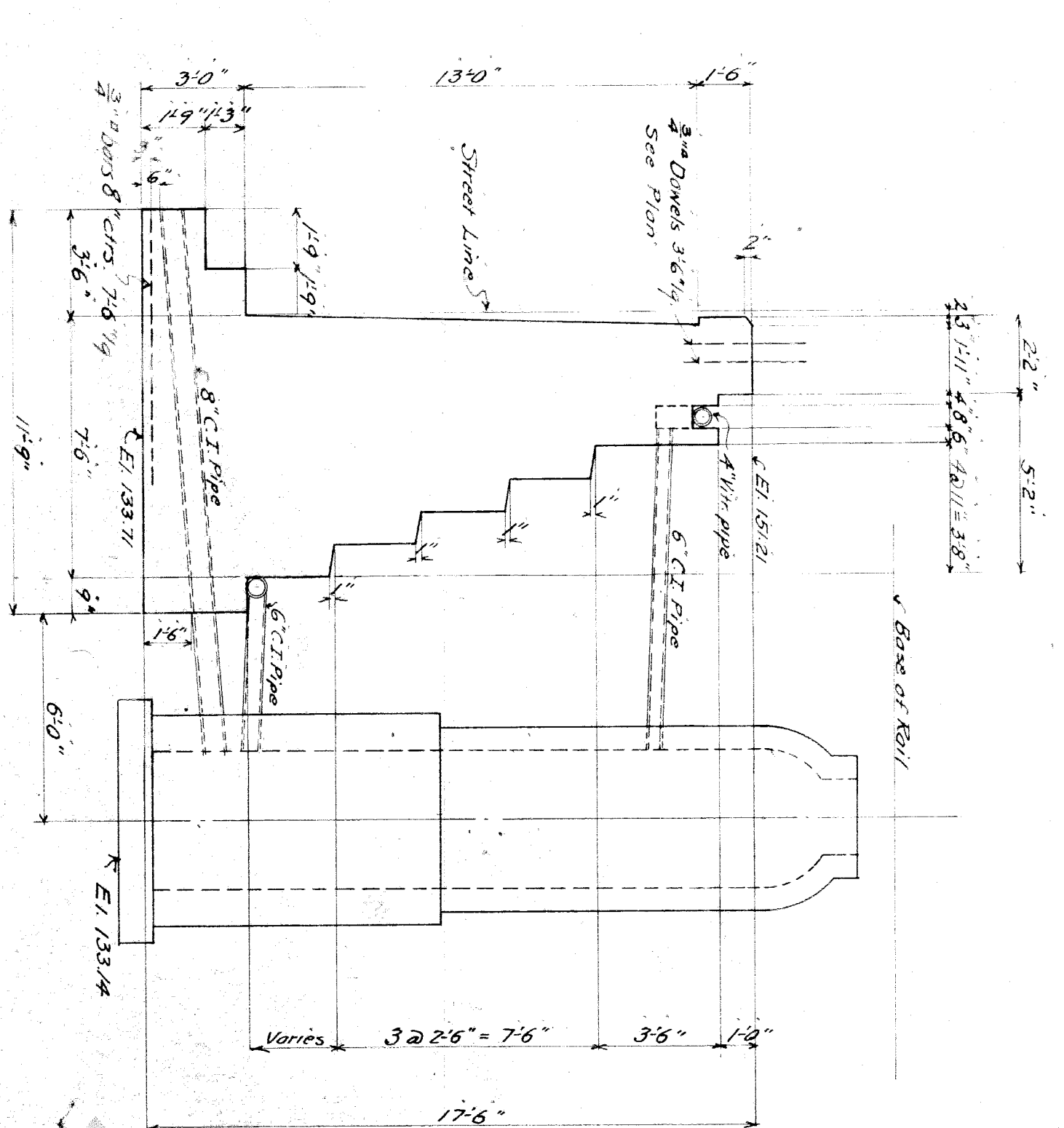
FRONT ELEVATION WEST ABUTMENT



SECTION BB



SECTION AA



PILE OF BARS

No.	Size	Length, ft.	Location	Weight of Bars, lbs.
150	3/4"	610"	Trailing from Br.	
110	3/4"	715"	Back Br.	
116	3/4"	316"	Reinforcing steel	
				Weight of Bars 7,401 lbs.

Bars to be cut from 72-3/4" to 100-1/4"

- Bill of Material for Drainage
- 184 lbs. 4" Vih. Pipe
 - 200 lbs. 6" C.I. Pipe 12 1/4'
 - 2 " 8" " 16 1/4'
 - 2 " C.I. covers See draw No. B 2002
 - 2 Catch Basin covers See draw No. B 2007 R3
 - 2 " 616" Vih. Pipe T. 90°

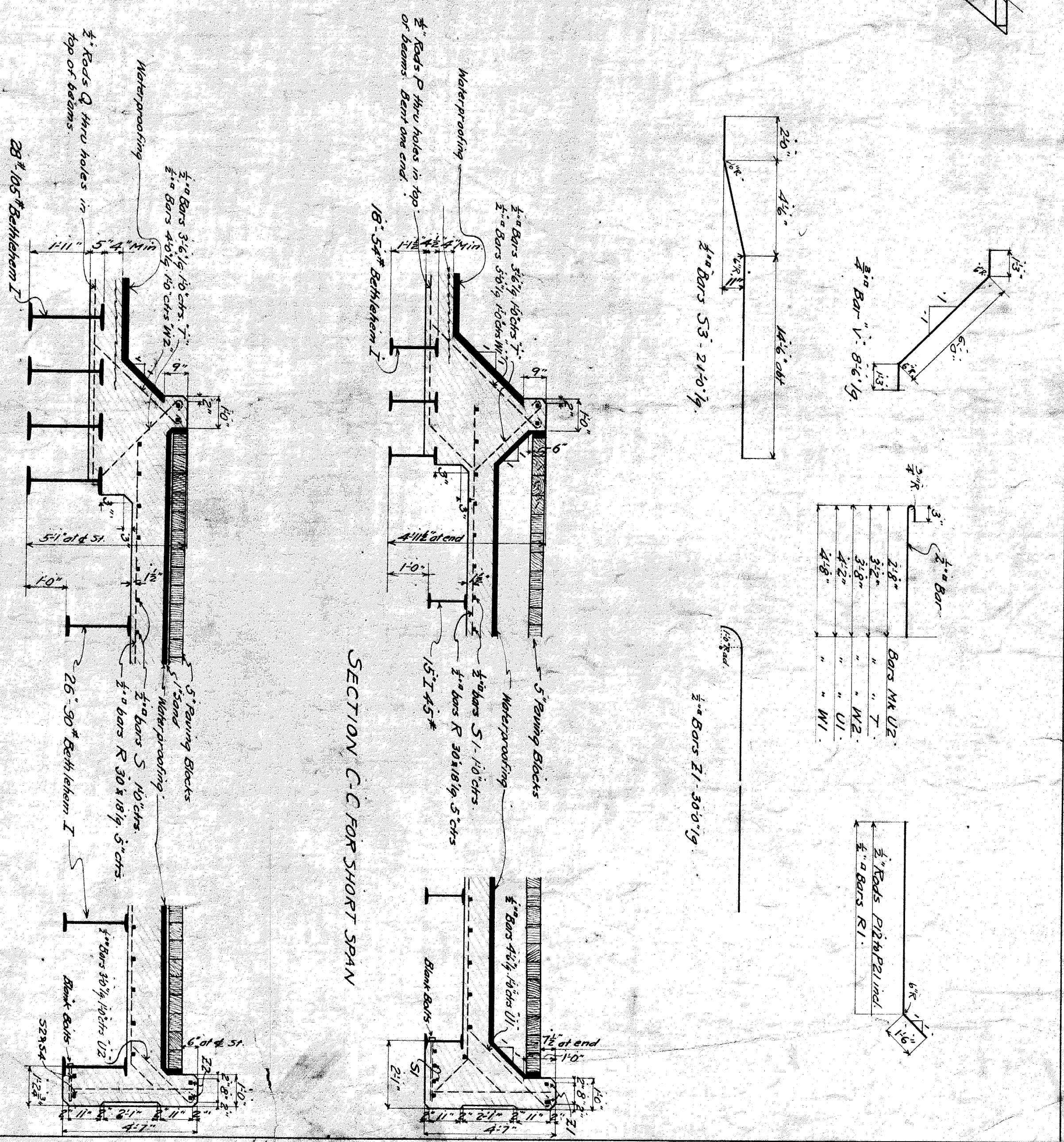
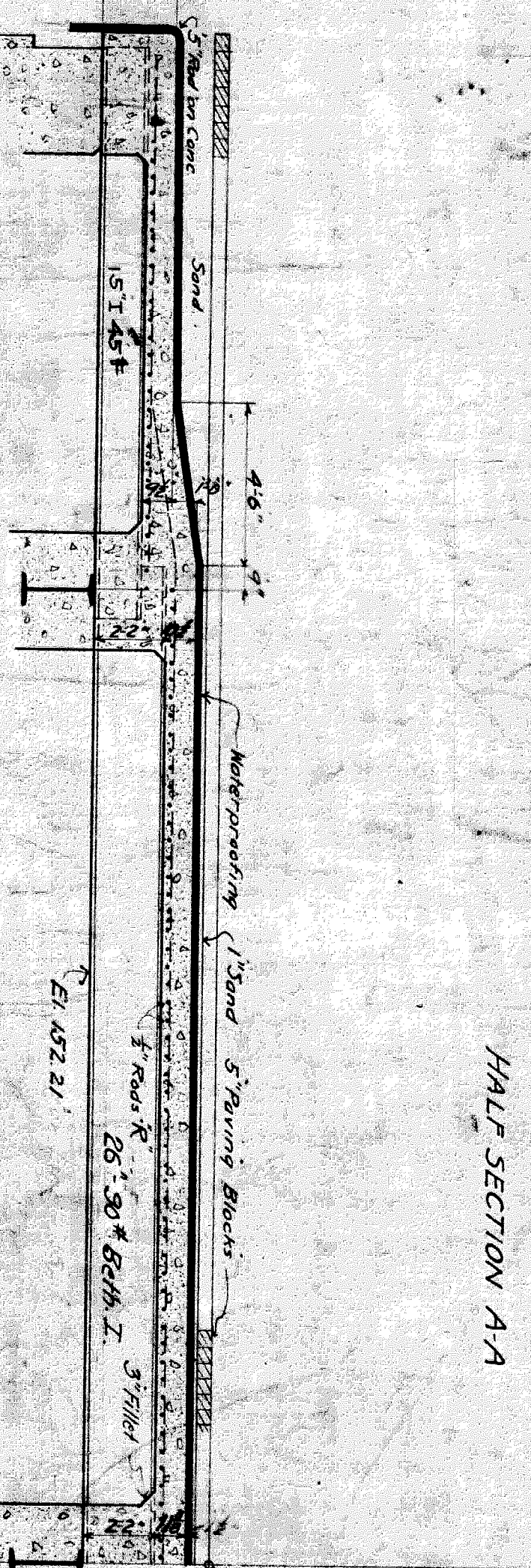
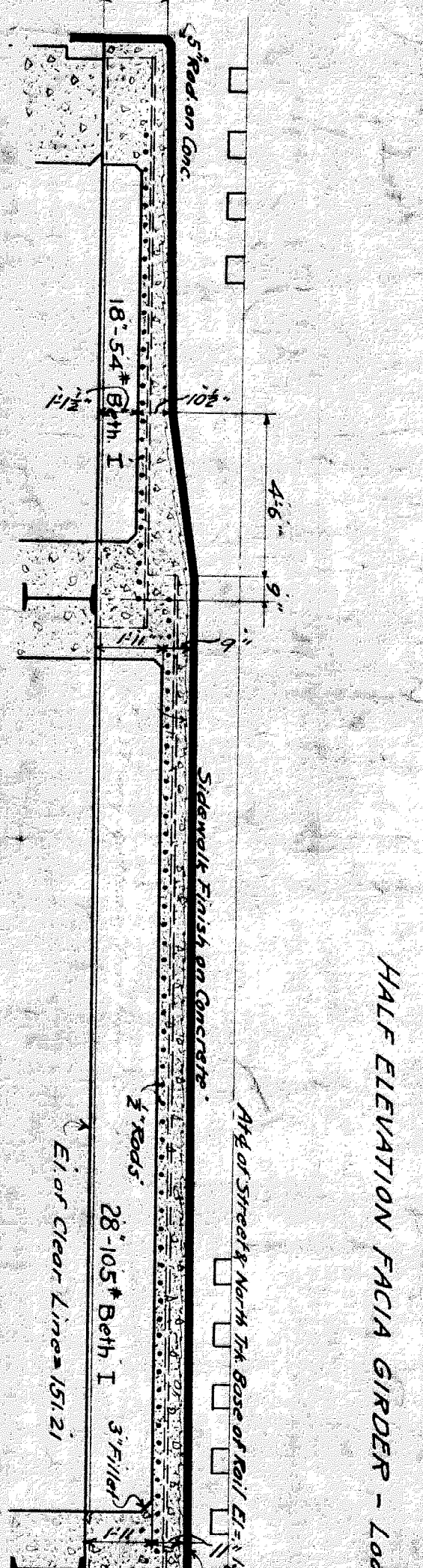
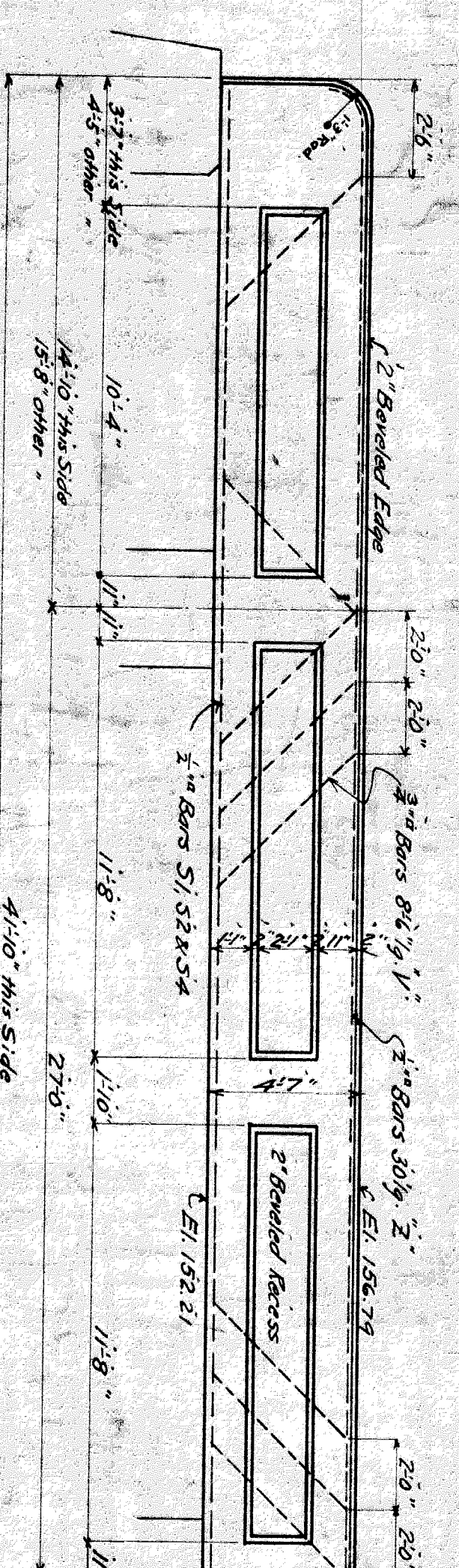
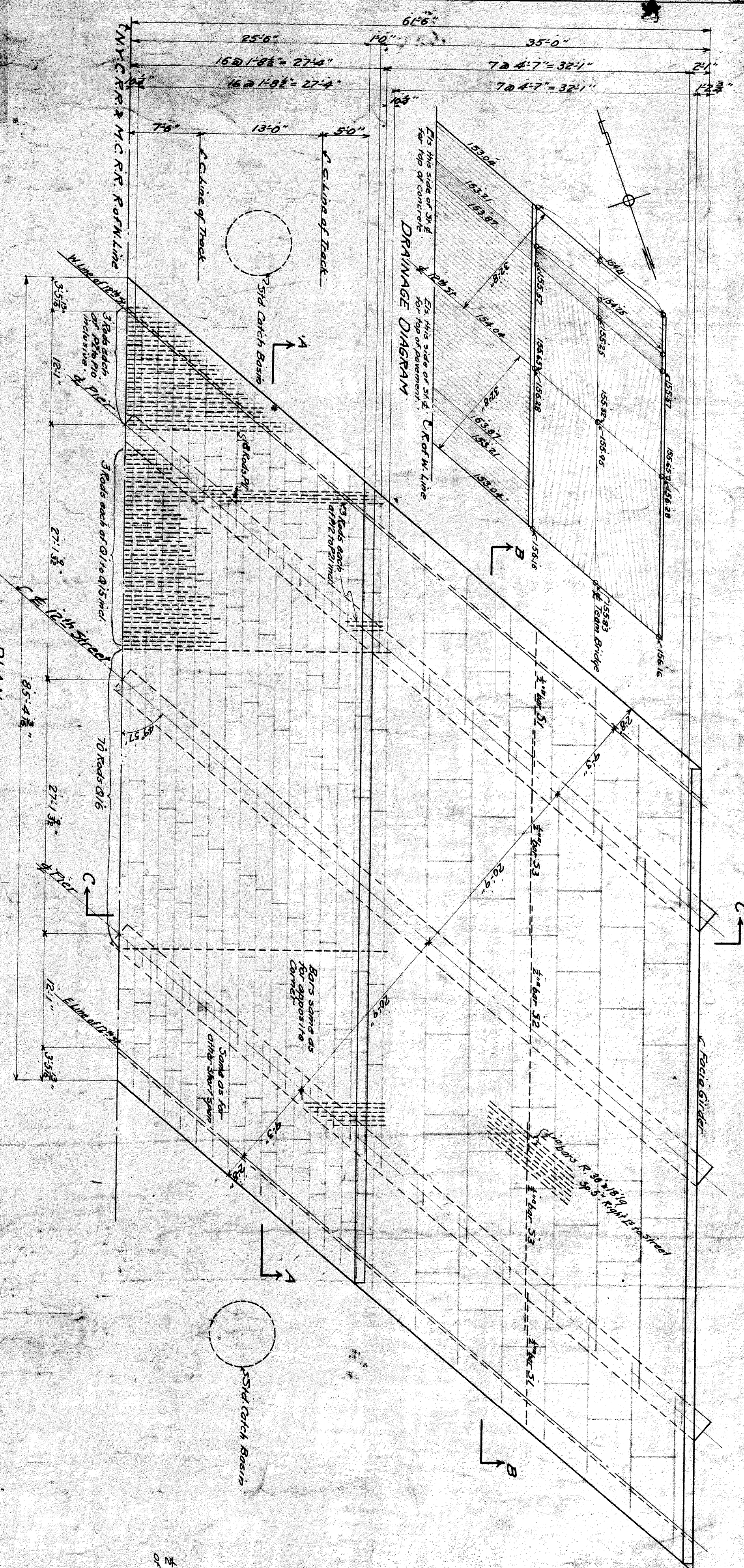
- Bill of Material for Concrete
- 3565 Sacks cement
 - 328 cu yds. Sand
 - 655 " " Stone

Notes: Contents - West Abutment 350 cu yds
East 363 " "

Concrete to be 1:2 1/2:5 MIX.
N.Y.C.R.R. West Specifications for plain and reinforced concrete dated Jan 2, 1915
City of Detroit Datum Elevations are used.
000 N.Y.C.R.R. West Datum = 72.64 City of Detroit.

File XU 10-5

N.Y.C.R.R. West	Bridge Dept.	G.C. Cleveland CE
Bridge No	Detroit Branch	
	Over 12th Street	
	Detroit, Mich.	
Mooney Plan - Abutments		
	Sheet 2 of 4	
1885	Scale 3/8" = 1'-0"	5-0065



BILL OF REINFORCING BARS

Log	No.	Size	Length	Remarks	Log	No.	Size	Length	Remarks
	6	3/8"	3.0	Top bars in beams	52	4	3/8"	2.1	Beam one end
	6	3/8"	3.0	Top bars in beams	52	5	3/8"	2.1	Beam one end
	6	3/8"	3.0	Top bars in beams	52	6	3/8"	2.1	Beam one end
	6	3/8"	3.0	Top bars in beams	52	7	3/8"	2.1	Beam one end
	6	3/8"	3.0	Top bars in beams	52	8	3/8"	2.1	Beam one end
	6	3/8"	3.0	Top bars in beams	52	9	3/8"	2.1	Beam one end
	6	3/8"	3.0	Top bars in beams	52	10	3/8"	2.1	Beam one end
	6	3/8"	3.0	Top bars in beams	52	11	3/8"	2.1	Beam one end
	6	3/8"	3.0	Top bars in beams	52	12	3/8"	2.1	Beam one end
	6	3/8"	3.0	Top bars in beams	52	13	3/8"	2.1	Beam one end
	6	3/8"	3.0	Top bars in beams	52	14	3/8"	2.1	Beam one end
	6	3/8"	3.0	Top bars in beams	52	15	3/8"	2.1	Beam one end
	6	3/8"	3.0	Top bars in beams	52	16	3/8"	2.1	Beam one end
	6	3/8"	3.0	Top bars in beams	52	17	3/8"	2.1	Beam one end
	6	3/8"	3.0	Top bars in beams	52	18	3/8"	2.1	Beam one end
	6	3/8"	3.0	Top bars in beams	52	19	3/8"	2.1	Beam one end
	6	3/8"	3.0	Top bars in beams	52	20	3/8"	2.1	Beam one end
	6	3/8"	3.0	Top bars in beams	52	21	3/8"	2.1	Beam one end
	6	3/8"	3.0	Top bars in beams	52	22	3/8"	2.1	Beam one end
	6	3/8"	3.0	Top bars in beams	52	23	3/8"	2.1	Beam one end
	6	3/8"	3.0	Top bars in beams	52	24	3/8"	2.1	Beam one end
	6	3/8"	3.0	Top bars in beams	52	25	3/8"	2.1	Beam one end
	6	3/8"	3.0	Top bars in beams	52	26	3/8"	2.1	Beam one end
	6	3/8"	3.0	Top bars in beams	52	27	3/8"	2.1	Beam one end
	6	3/8"	3.0	Top bars in beams	52	28	3/8"	2.1	Beam one end
	6	3/8"	3.0	Top bars in beams	52	29	3/8"	2.1	Beam one end
	6	3/8"	3.0	Top bars in beams	52	30	3/8"	2.1	Beam one end
	6	3/8"	3.0	Top bars in beams	52	31	3/8"	2.1	Beam one end
	6	3/8"	3.0	Top bars in beams	52	32	3/8"	2.1	Beam one end
	6	3/8"	3.0	Top bars in beams	52	33	3/8"	2.1	Beam one end
	6	3/8"	3.0	Top bars in beams	52	34	3/8"	2.1	Beam one end
	6	3/8"	3.0	Top bars in beams	52	35	3/8"	2.1	Beam one end
	6	3/8"	3.0	Top bars in beams	52	36	3/8"	2.1	Beam one end

Notes:

Concrete: 257 cu yds.
 Waterproving: 5900 sq ft.
 Wt. of Bars: 10800 #

Concrete to be 1:2:4 mixture
 N.Y.C.R.R. West Specifications for plain
 and reinforced concrete above Jan. 27, 1913
 City of Detroit, Detroit Elevations used
 000 = N.Y.C.R.R. West Datum = +92.64 City of Detroit

Bill of Material for Concrete:
 1582 Square Yards
 113 cu yds. Stone
 226 cu yds. Spalls

NY.C.R.R. West Bridge Dept. G.C. Cleveland C.E.
Bridge No. Detroit Branch
Over 12th Street
Detroit, Mich.
Masonry Floor Details
Sheet 4 of 4

Scale of 1" = 10' Date Aug 28, 1916 06065
 Prepared by J.W. Checked by J.W.