

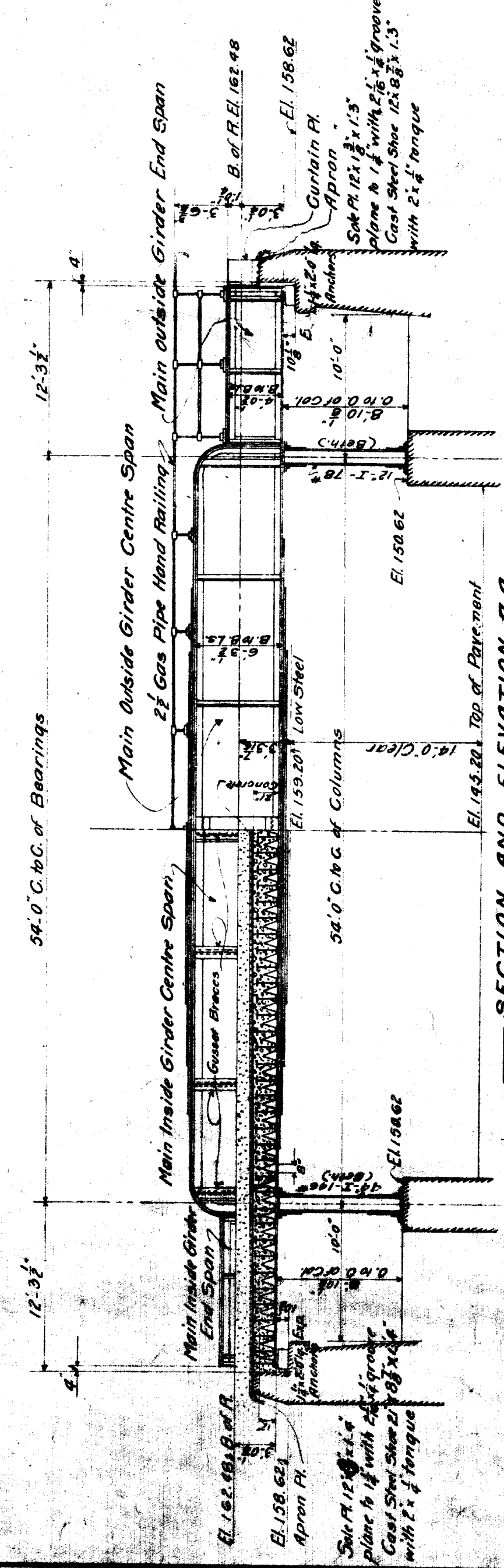
COURTESY COPY
 NOT TO BE USED FOR CONSTRUCTION
 OR FOR CONTRACTING PURPOSES

Examined *W. H. ...* Structural Engineer
 Approved *M. R. ...* Chief Engineer
 JUNE 11 1913

— G. T. R. —
 WESTERN DIVISION 29th DISTRICT
 BRIDGE No. MILE
 OVER
 WOODYARD AVE. DETROIT MICH.

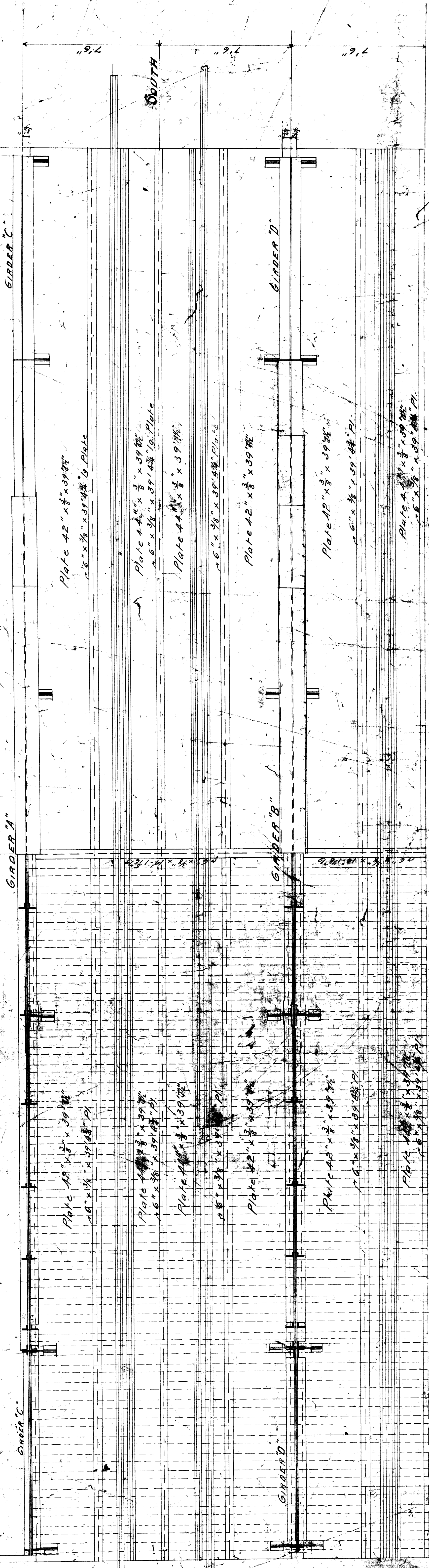
Office of Chief Engineer, Montreal
 June 30 1913
 Scale 3/8" = 1' R.
 Designed by *A. ...*
 Drawn by *A. ...*
 Checked by *A. ...*
 W-4413

- PLAN —**
- Main Inside Girder Centre Span**
 1 - 12" x 12" Cap Pl. 1' 10" lg.
 1 - 18" x 3/4" Cap Pl. 1' 10" lg.
 2 - 18" x 3/8" Side Pls. Top
 2 - 18" x 3/8" Side Pls. Botm.
 2 - 6" x 3/8" Top Fillet
 2 - 6" x 3/8" Botm. Fillet
 2 - 12" x 3/8" Conn. Fills.
- One Main outside Girder Centre Span**
 1 - 12" x 12" Cap Pl. 1' 10" lg.
 1 - 18" x 3/4" Cap Pl. 1' 10" lg.
 2 - 18" x 3/8" Side Pls. Top
 2 - 18" x 3/8" Side Pls. Botm.
 2 - 6" x 3/8" Top Fillet
 2 - 6" x 3/8" Botm. Fillet
 2 - 12" x 3/8" Conn. Fills.



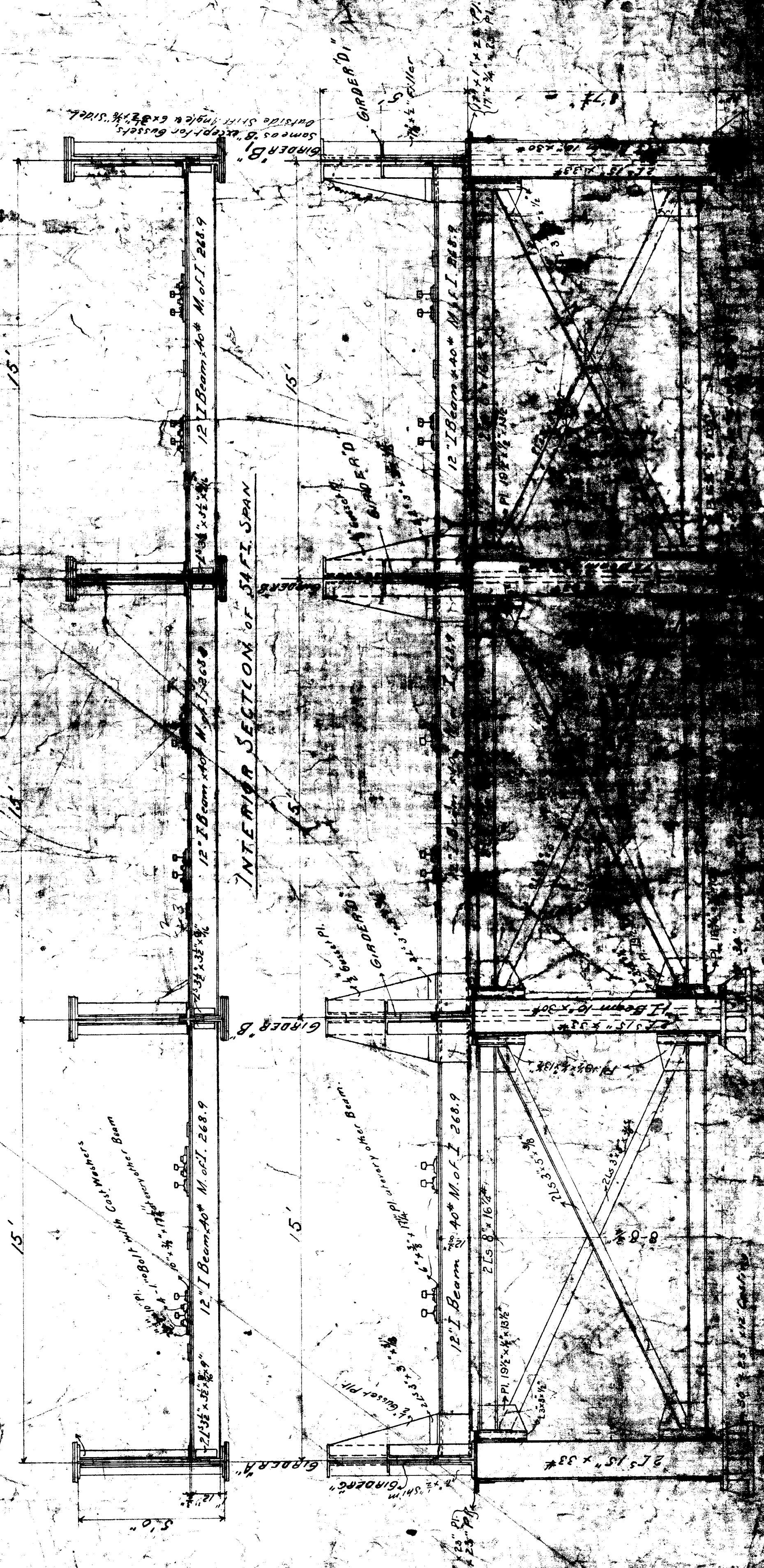
- SECTION AND ELEVATION AA —**
- Inside Girder End Span**
 1 - 12" x 12" Cap Pl. 1' 10" lg.
 1 - 18" x 3/4" Cap Pl. 1' 10" lg.
 2 - 18" x 3/8" Side Pls. Top
 2 - 18" x 3/8" Side Pls. Botm.
 2 - 6" x 3/8" Top Fillet
 2 - 6" x 3/8" Botm. Fillet
 2 - 12" x 3/8" Conn. Fills.
- Outside Girder End Span**
 1 - 12" x 12" Cap Pl. 1' 10" lg.
 1 - 18" x 3/4" Cap Pl. 1' 10" lg.
 2 - 18" x 3/8" Side Pls. Top
 2 - 18" x 3/8" Side Pls. Botm.
 2 - 6" x 3/8" Top Fillet
 2 - 6" x 3/8" Botm. Fillet
 2 - 12" x 3/8" Conn. Fills.

Web 1/4" thick



HALF HORIZONTAL SECTION THROUGH GIRDERS

OTHER HALF SAME AS THIS HALF EXCEPT THAT OUTSIDE UNDERLINE GIRDERS B AND C



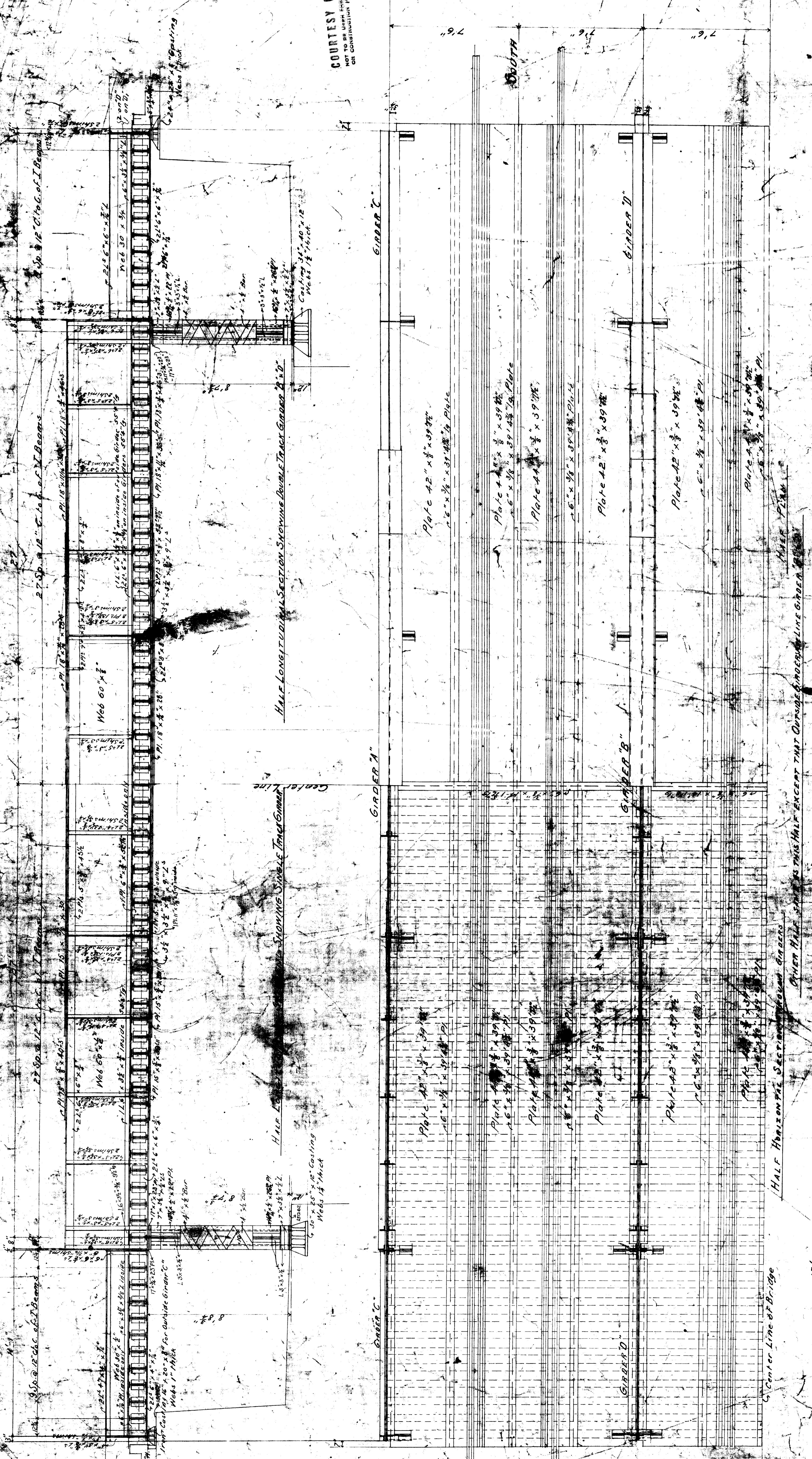
INTERIOR SECTION OF STIFF SPAN

All Material, except Castings, Rivets & Bolts, Class A Steel. M.C.R.R. 1900 Specifications.
 All Plates less than 1/2" thick to have rolled edges.
 Sheared Edges of Plates, Web Plates, Web Splice Plates to be planed not less than 1/8"
 Ends of Columns Top & Bottom of Castings & Beeplates, Ends of Stringers, Ends of Girders
 where riveted together to be Machine faced.
 All Rivets 3/4" except in Top Flange of 12" I Beams, in Floor plate & in 10" I Beams
 where Rivets are 7/8".
 Punch Holes for Rivets in lower 3 of Web Pls, Web Splice Pls, Bottom Side Plates
 and Bottom Flange Angles & Plates 1/2" and rear to 7/8" to be fore assembling
 and Rivets for Shop Rivets in Stiffening Ls, Shim Way Bracing 1/2"
 Punch Holes for Shop Rivets in Floor Plate & Top Flange of 12" I Beams 1/2"
 Punch all other holes to smaller than rivet and rear 1/8" larger
 than rivets, except those punched 1/8" larger than rivet.
 Punch all holes for field rivets to Template.

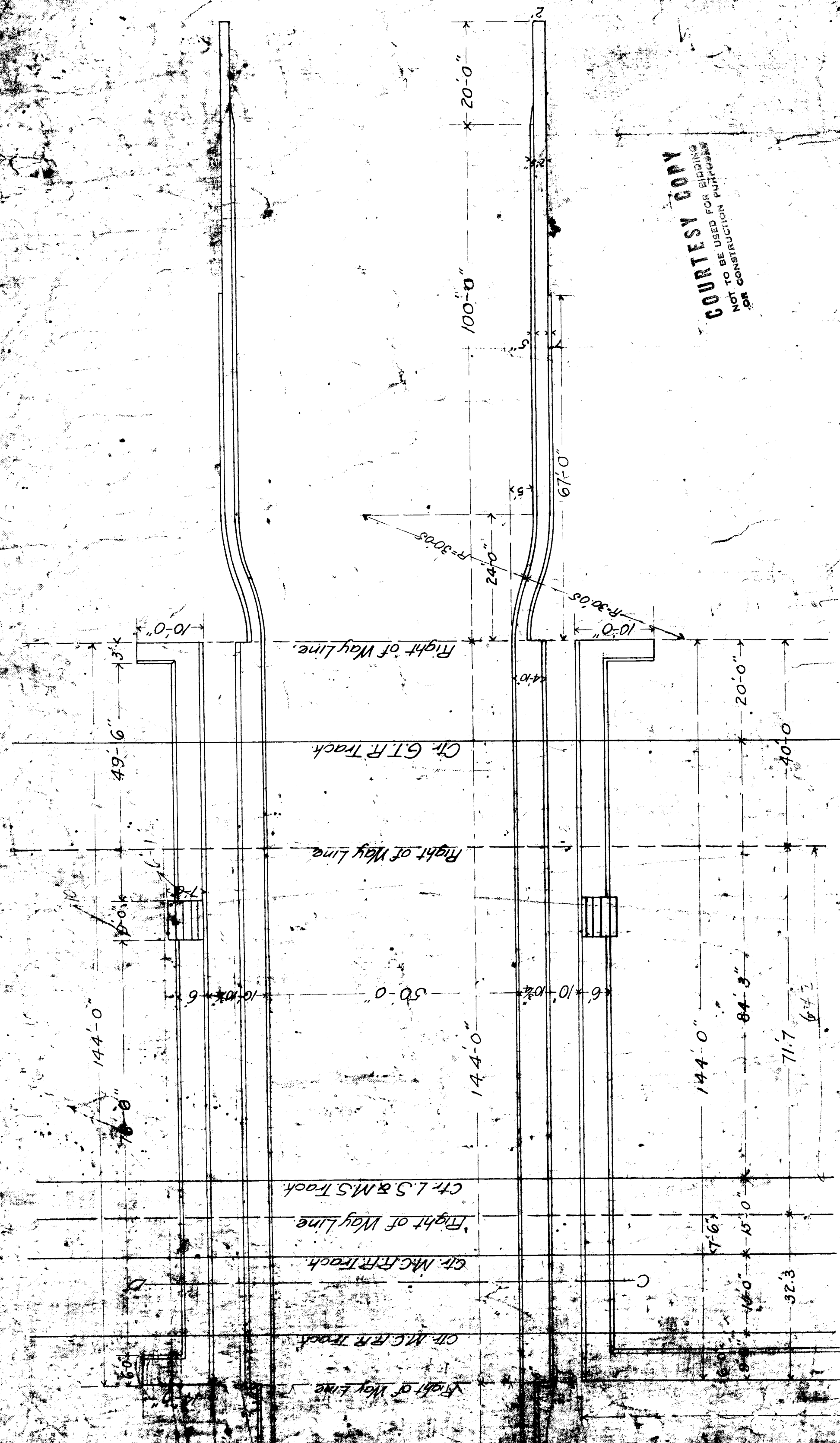
COURTESY COPY
NOT TO BE USED FOR BIDDING
OR CONSTRUCTION PURPOSES

M.C.R.R. & L.S. & M.S.B.
BRIDGE OVER Wagonway
DETROIT

COURTESY COPY
NOT TO BE USED FOR BIDDING
OR CONSTRUCTION PURPOSES

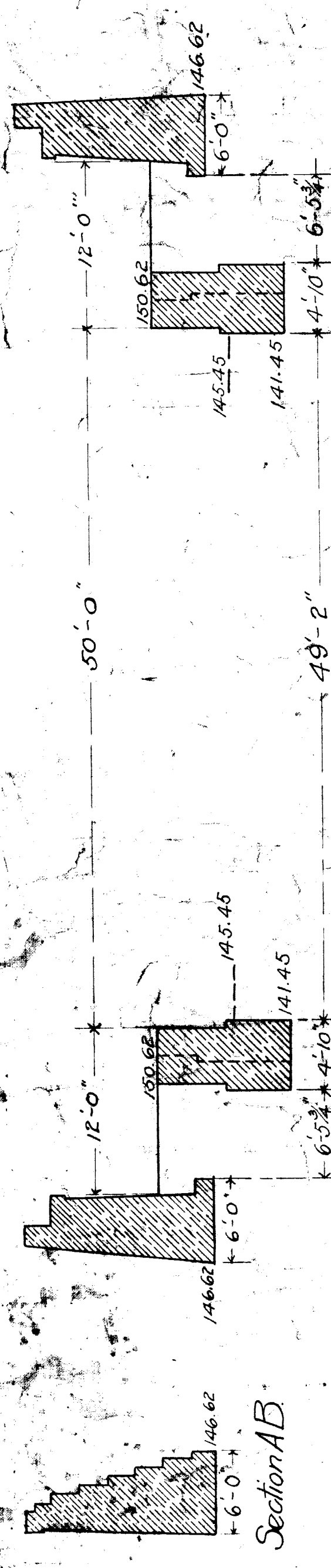


All Material except Castings, Pins & Bolts, Class X Steel, M.G.R.R. 1900 Specifications.
 All Plates to be of the same mill, rolled, fire
 Sheared Edges, and Plates, Welding Plates to be placed not less than 8"
 Ends of Castings, Top & Bottom of Castings & Beeplates, Ends of Stringers & Ends of Girders
 where rivets are to be Machine Press
 All Rivets to be in Top Flange of 12" Beams, in Floorplate & in 10" Beams
 where Rivets are to be Machine Press



COURTESY COPY
NOT TO BE USED FOR BIDDING
OR CONSTRUCTION PURPOSES

Scale 1/8" = 1'



Section C.D.
Scale 1/8" = 1'

Section A.B.

M.C.R.R. - Bay City Div.
Bridge 5⁶² - Woodward Ave.
General Plan of Masonry
Feb. 1909

Approved
Bridge Engineer

Masonry extended for an additional track

144'-0"

146.62

Level of Sidewalk 150.62
at face of Ret. Wall

R.W.

4'-0" x 3'-6"

Break Section

26'-3"

16'-0"

154.12

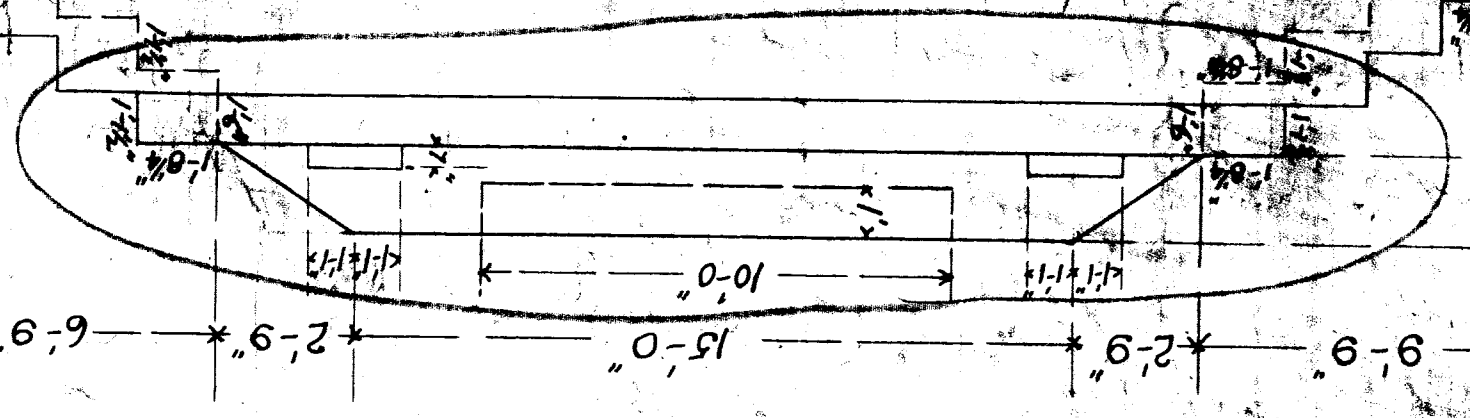
154.12

153.745

15'-0"

2'-9"

9'-9"

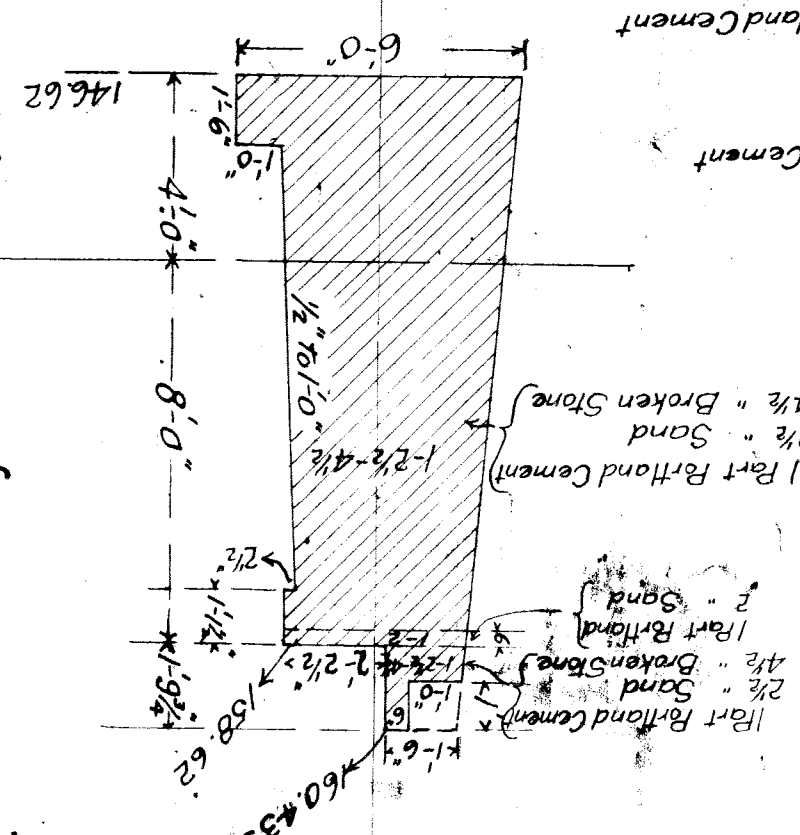
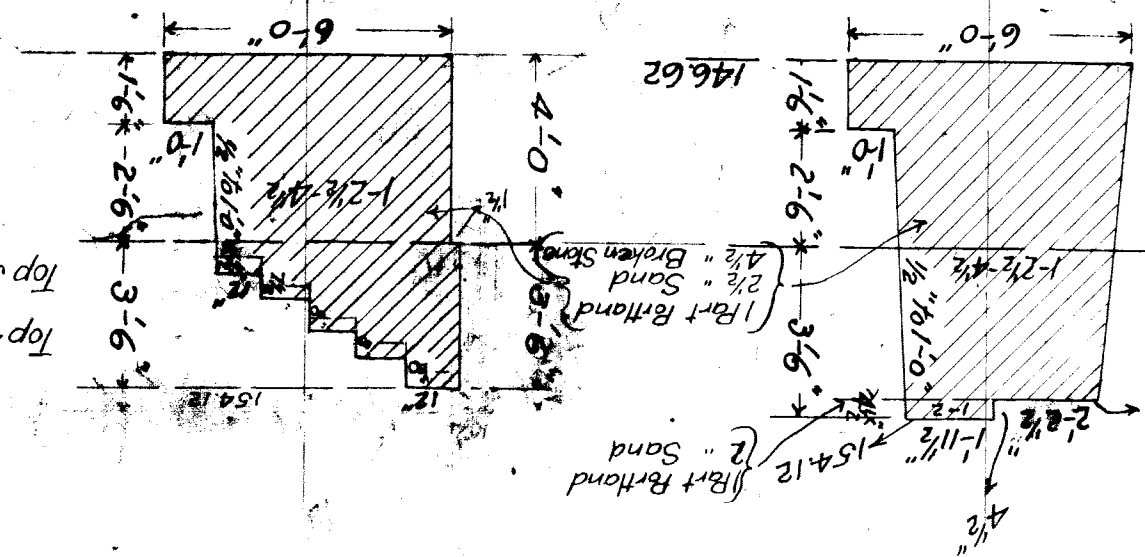


COURTESY COPY
NOT TO BE USED FOR ANYTHING
OR CONSTRUCTION PURPOSES

Level of Sidewalk 150.62
at face of Ret. Wall

Section at Girders

Top 4 1/2" top step
Top 3" all other steps
(1 Part Portland Cement
2 1/2" Sand)



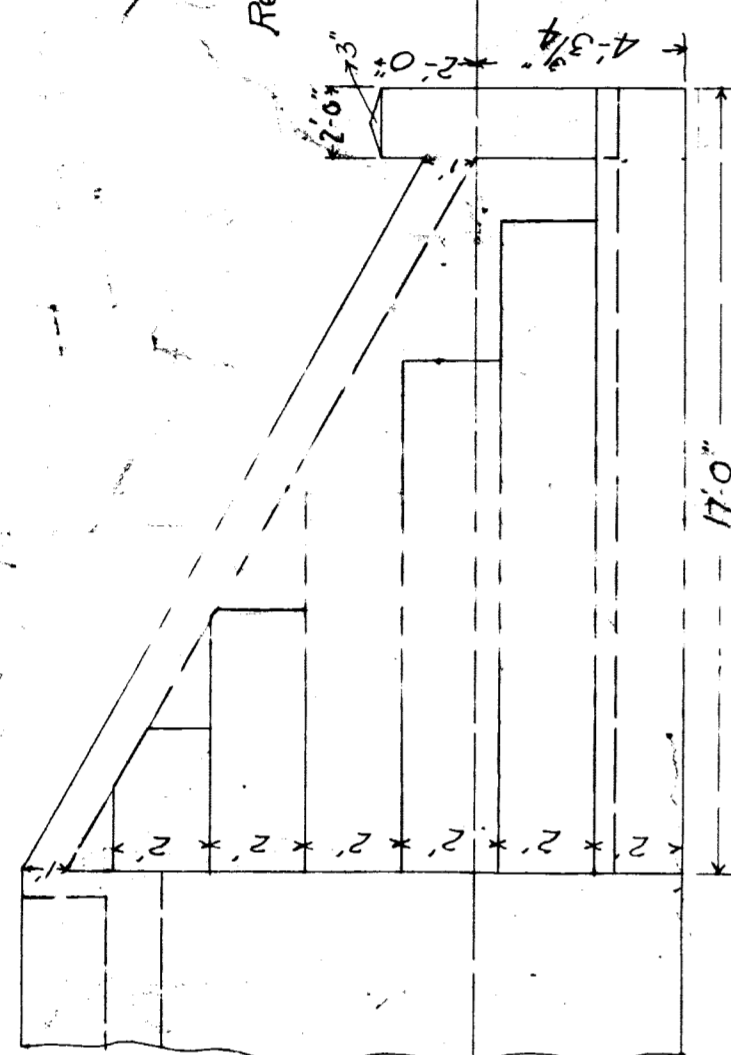
(1 Part Portland Cement
2 1/2 Parts Broken Stone
4 1/2 Parts Sand)

(1 Part Portland Cement
2 1/2 Parts Broken Stone
4 1/2 Parts Sand)

(1 Part Portland Cement
2 1/2 Parts Broken Stone
4 1/2 Parts Sand)

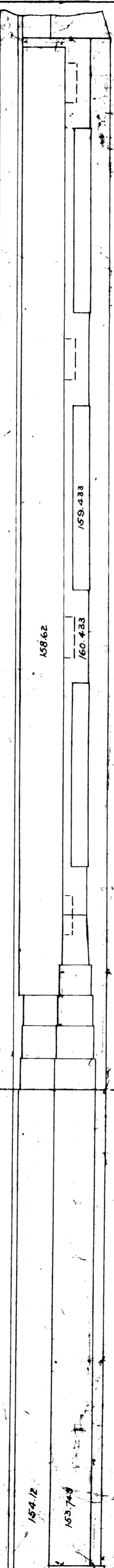
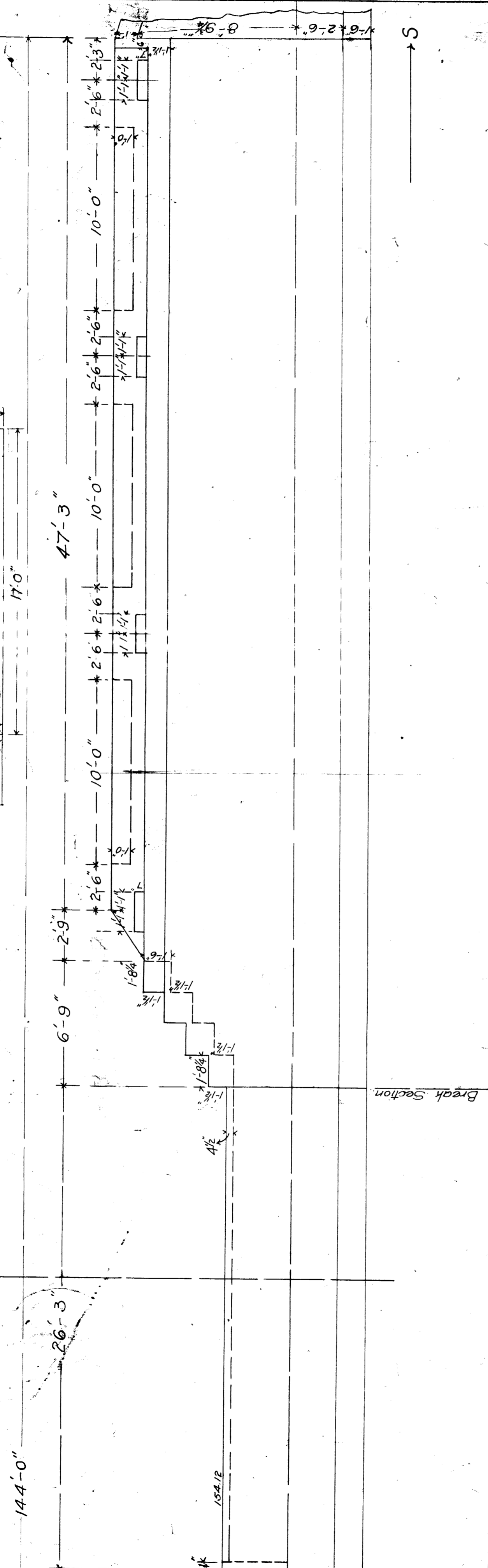
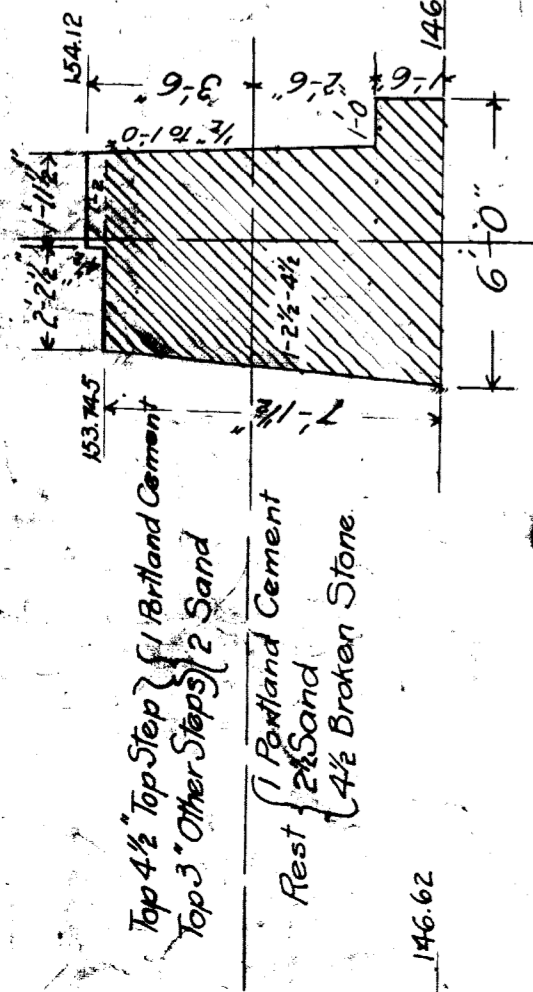
Top 6" { 1 Portland Cement
2 Sand.

Rest { Portland Cement
2 1/2 Sand
4 1/2 Broken Stone.

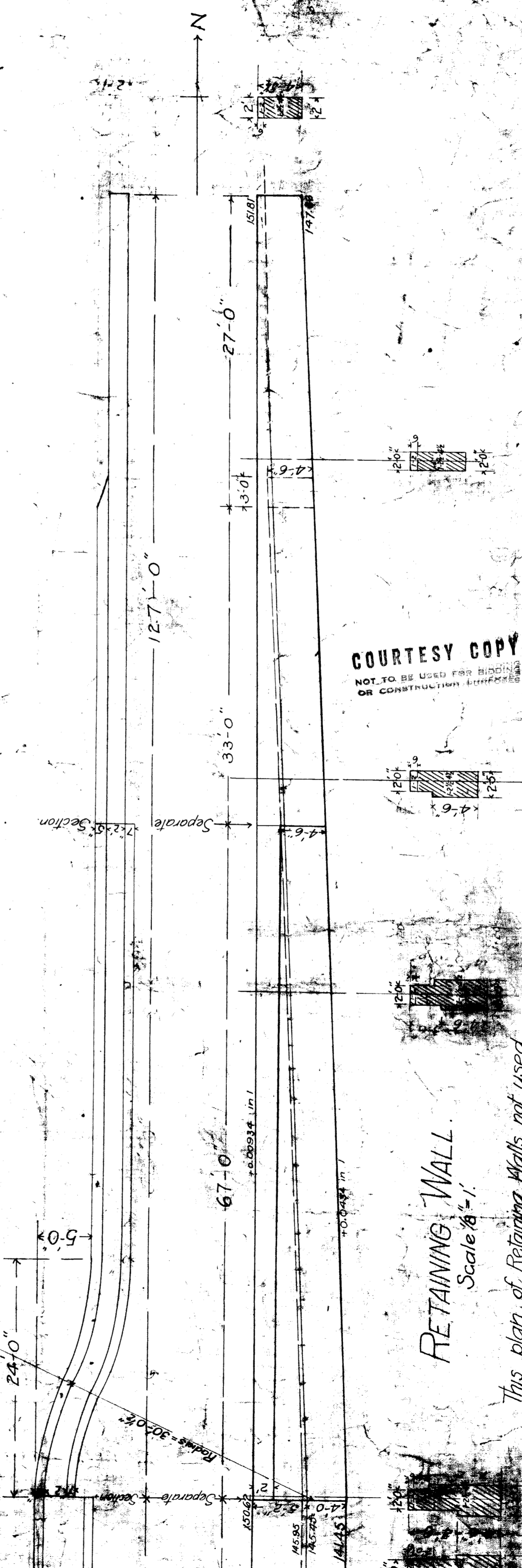
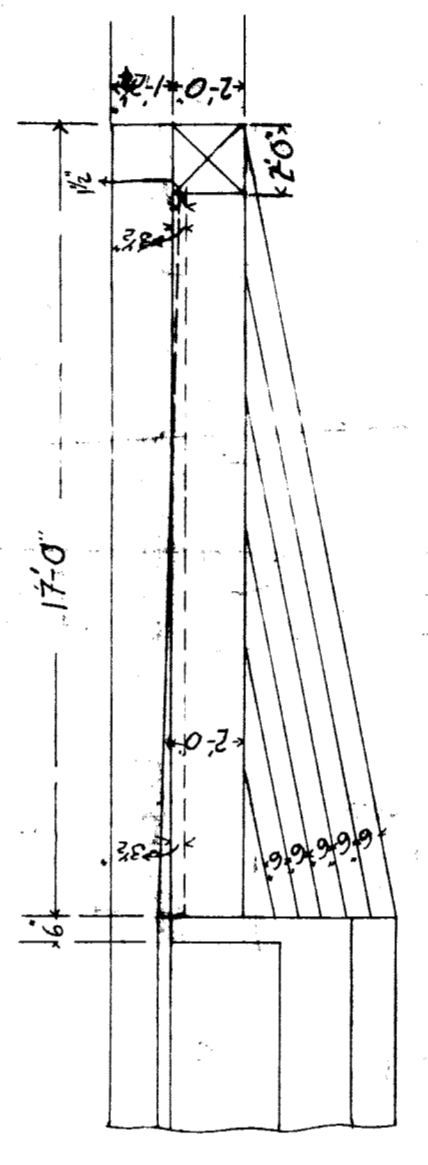


Top 4 1/2" { 1 Portland Cement
2 Sand.

Rest { 1 Portland Cement
2 1/2 Sand
4 1/2 Broken Stone.



SOUTH ABUTMENT.
Scale 3/4" = 1'



RETAINING WALL.
Scale 3/8" = 1'

This plan of Retaining Walls not used.

COURTESY COPY
NOT TO BE USED FOR BIDDING
OR CONSTRUCTION PURPOSES

M.C.R.R. - BAY CITY DIV.
Bridge 565 + Woodward Ave.

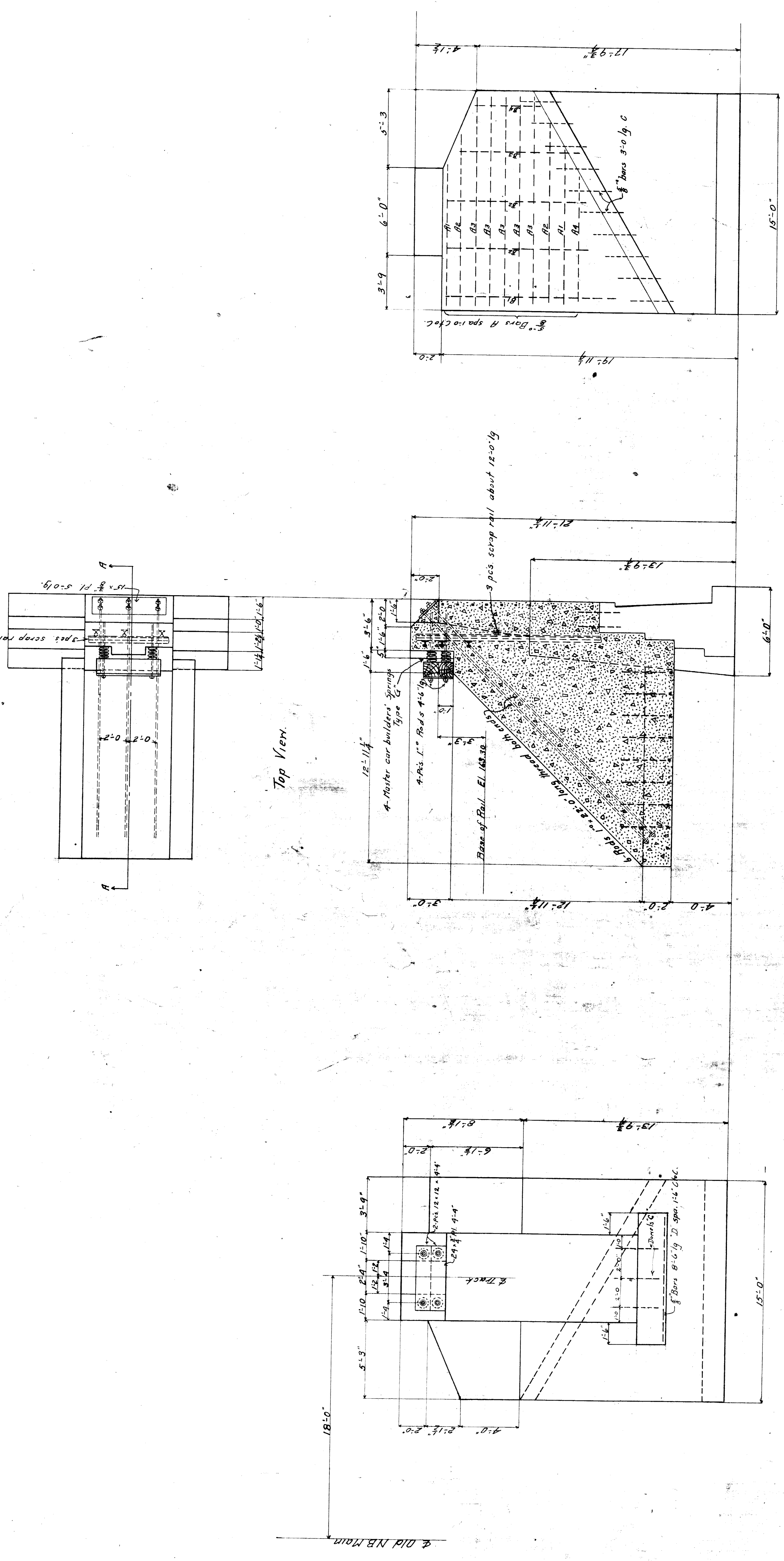
Approved
Bridge Engineer.

COURTESY COPY
NOT TO BE USED FOR BIDDING
OR CONSTRUCTION PURPOSES

Concrete - 1 part cement 2 1/2 parts sand 4 1/2 parts broken stone.
Contents 60 Cu. Yds.

M. C. R. R. - Div. - BAY CITY
Bridge 5⁶² Woodward Ave
Bumping Post on South Abutment
Approved: *H. O. Keller* Bridge Engineer. Drawn by: *E. C. C. B. M. 1919*
Checked by: _____ 19____
Chief Engineer. Traced by: _____
Revised: _____
Sheet _____ of _____

565
J 12
FILE X 11-36



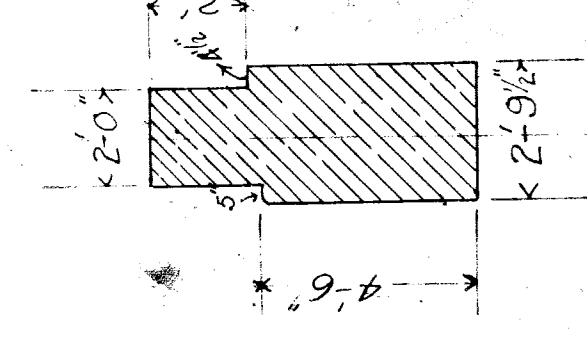
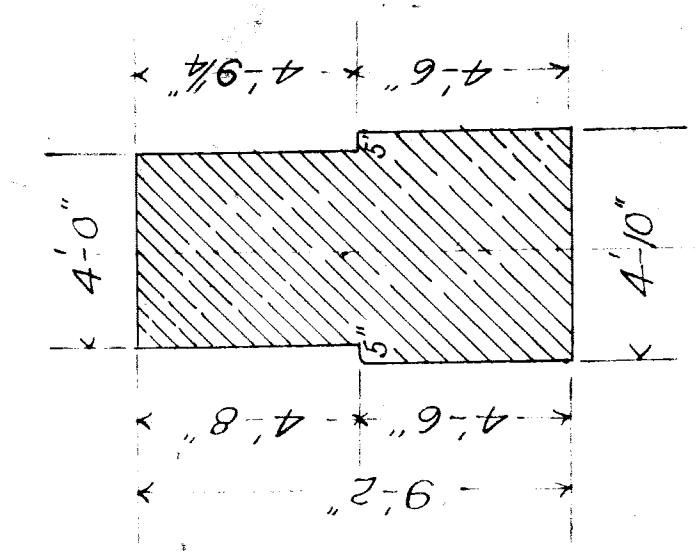
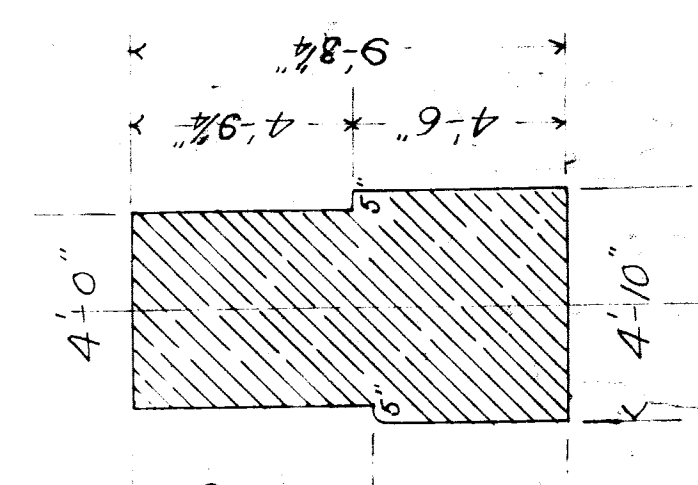
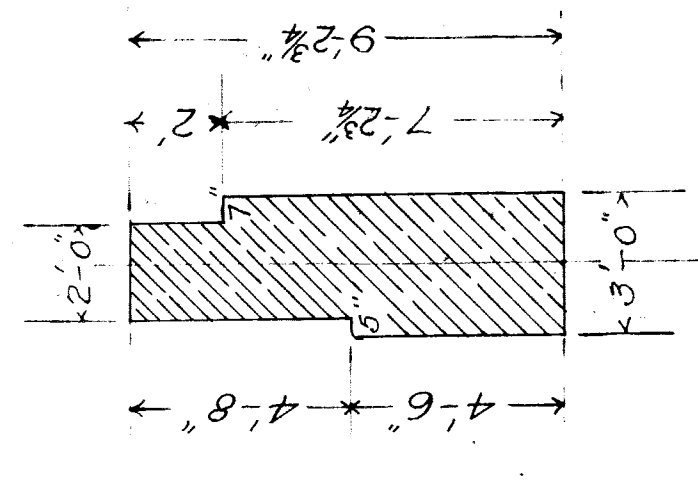
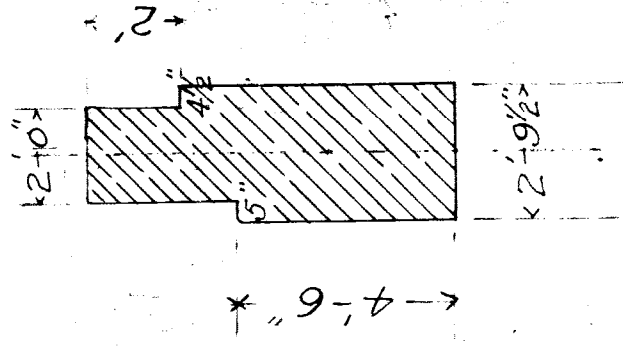
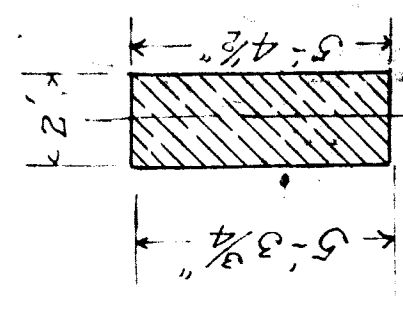
Front View

Section AA

Back View

LIST OF MATERIAL

No	Mark	Size	Length	Location
2	A1	9'-6"	11'-6"	Front face
2	A2	11'-6"	14'-0"	"
5	A3	14'-0"	9'-0"	"
1	B1	11'-0"	9'-6"	"
2	B2	9'-6"	7'-0"	"
1	B3	7'-0"	4'-0"	"
1	B4	3'-0"	8'-6"	Donkeys
9	D	1'-0"	22'-0"	Bellevue
6		1'-0"	12'-0"	Thread both ends
3	Scrap Rail	12'-0"	5'-0"	
3	"	5'-0"	4'-4"	
1	15' x 8' Pl.	5'-0"	4'-4"	
1	24' x 8' Pl.	4'-4"	4'-6"	Thread one end.
4	1" Rods	4'-6"		Master Car Builders Springs Type C.

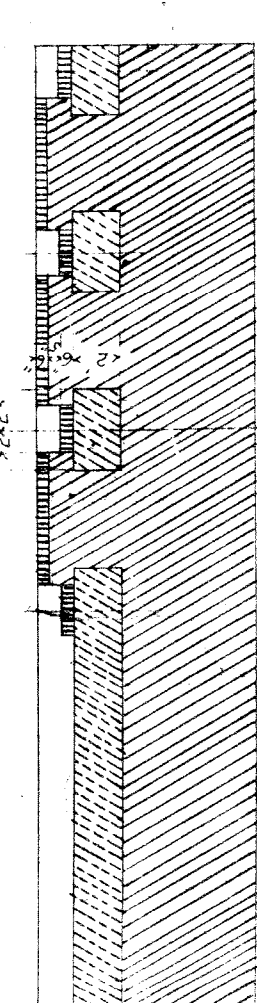
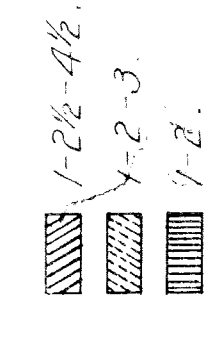


Sections - Scale 1/4"=1'

Elevation.
Scale 1/8"=1'

COURTESY COPY
DO NOT BE USED FOR BIDDING
OR CONSTRUCTION PURPOSES

Plan.
Scale 1/8"=1'



Make top 6" of wings 1-2.
make rest of wings 1-2 & 4 1/2.

Approved

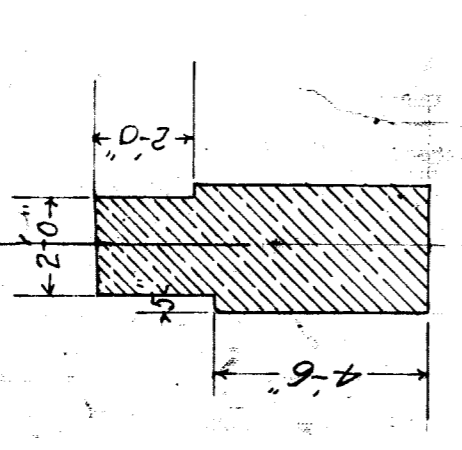
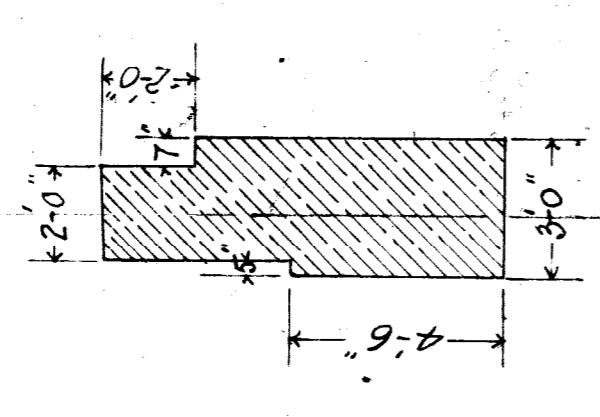
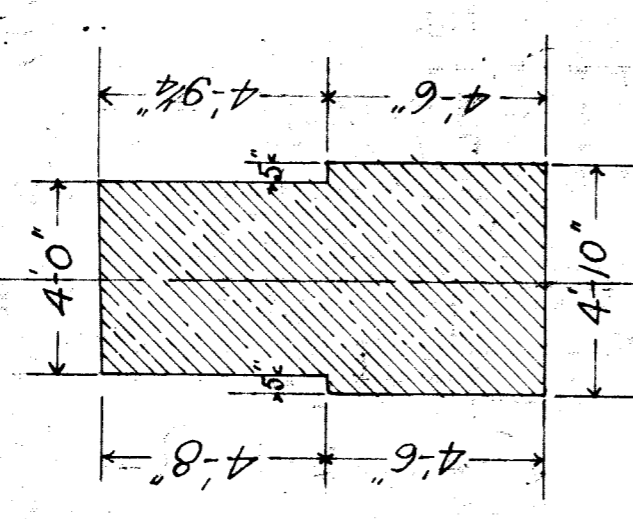
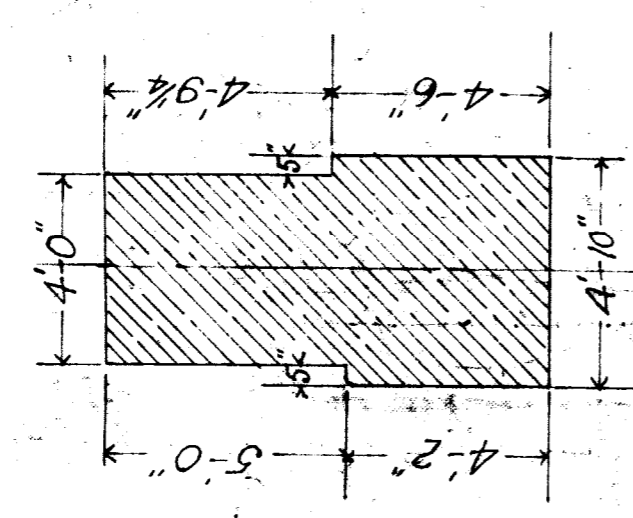
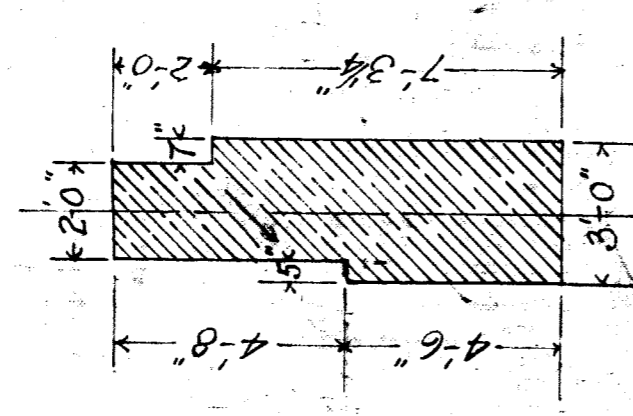
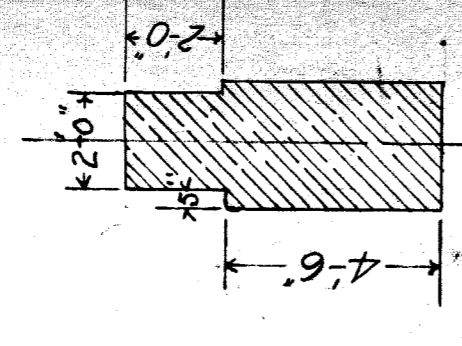
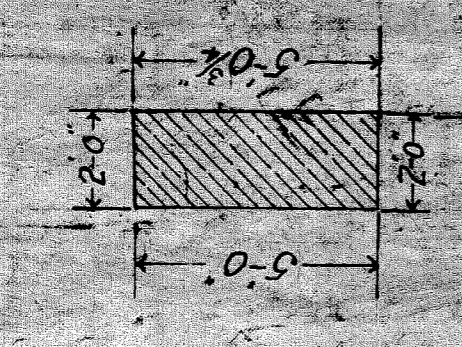
Bridge Engineer

M.C.R.R. - Bay City Div.
Bridge 5.05 - Woodward Ave.
NORTH RETAINING WALL.

Oct. 1909

File X01-57

ction through
Way

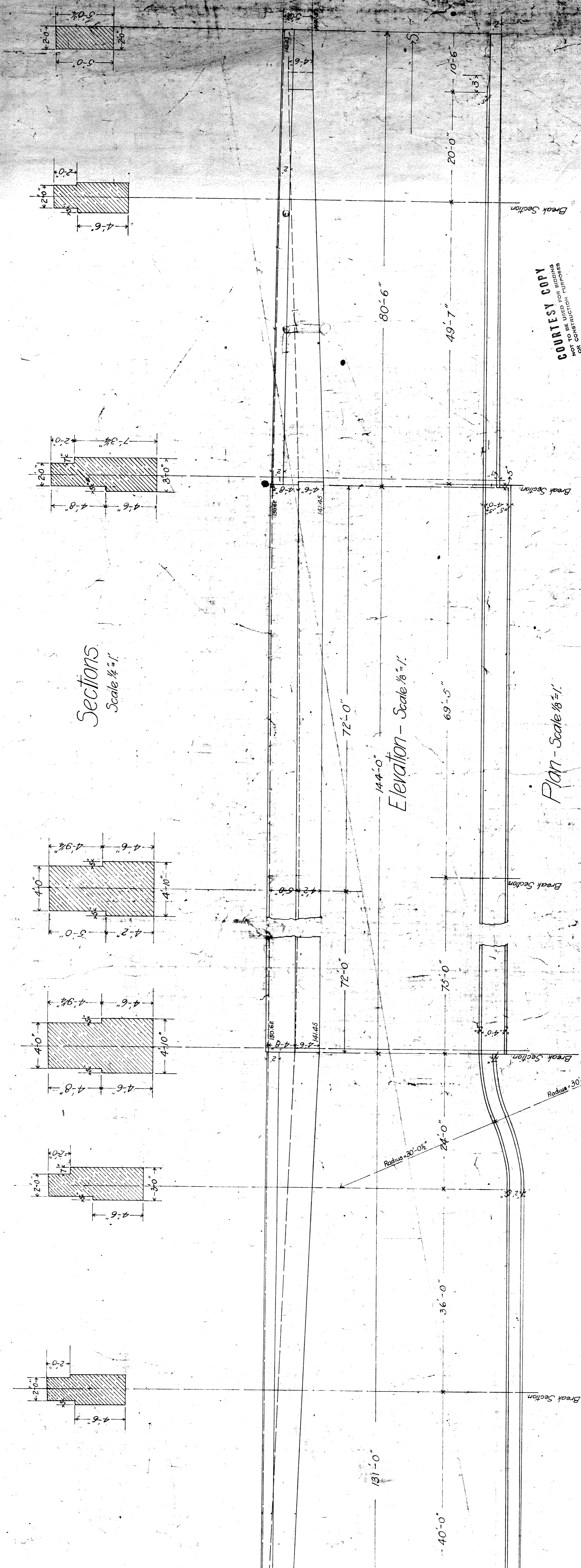


Sections
Scale 1/4" = 1'

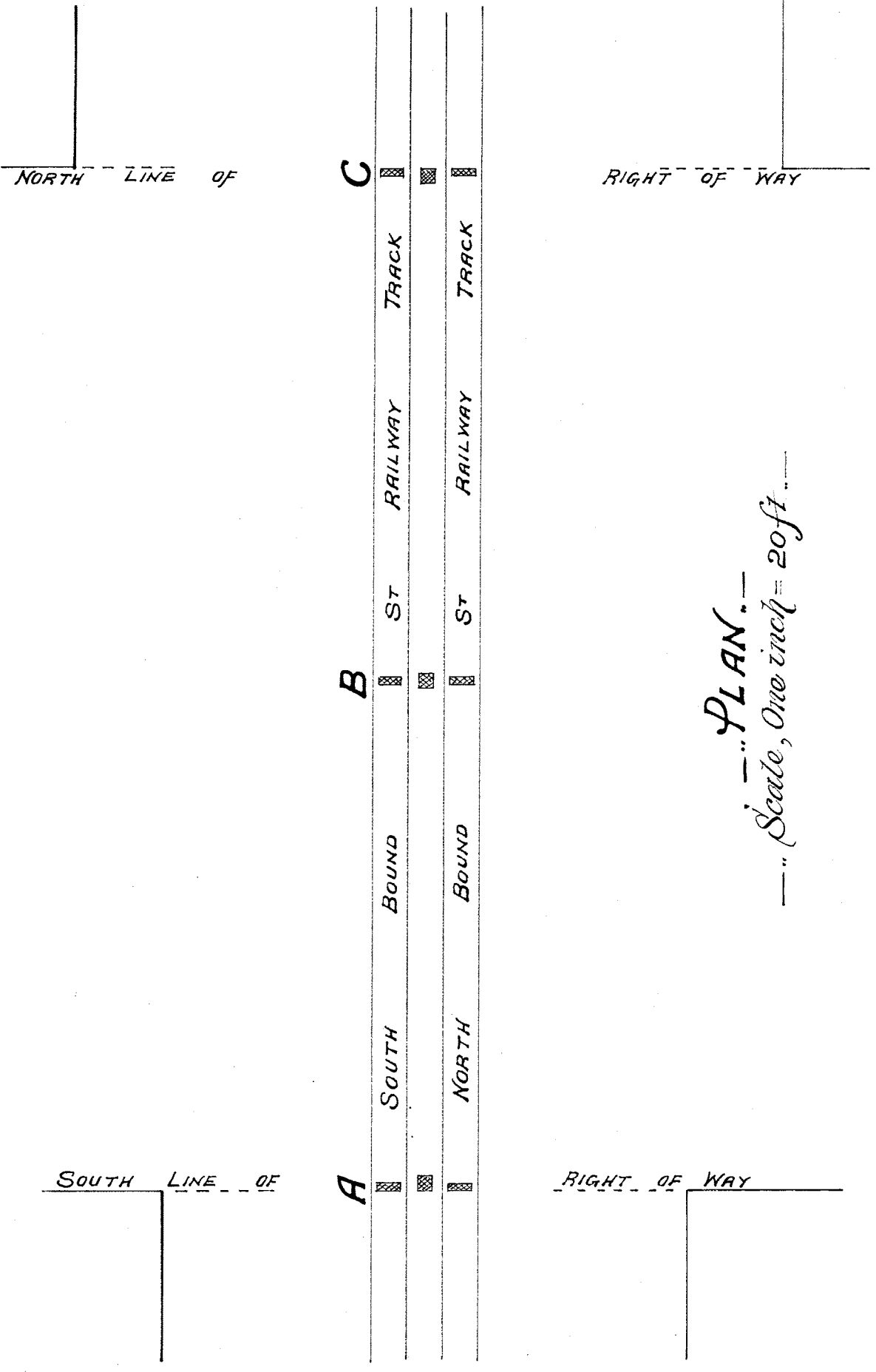
Elevation - Scale 1/8" = 1'

Plan - Scale 1/8" = 1'

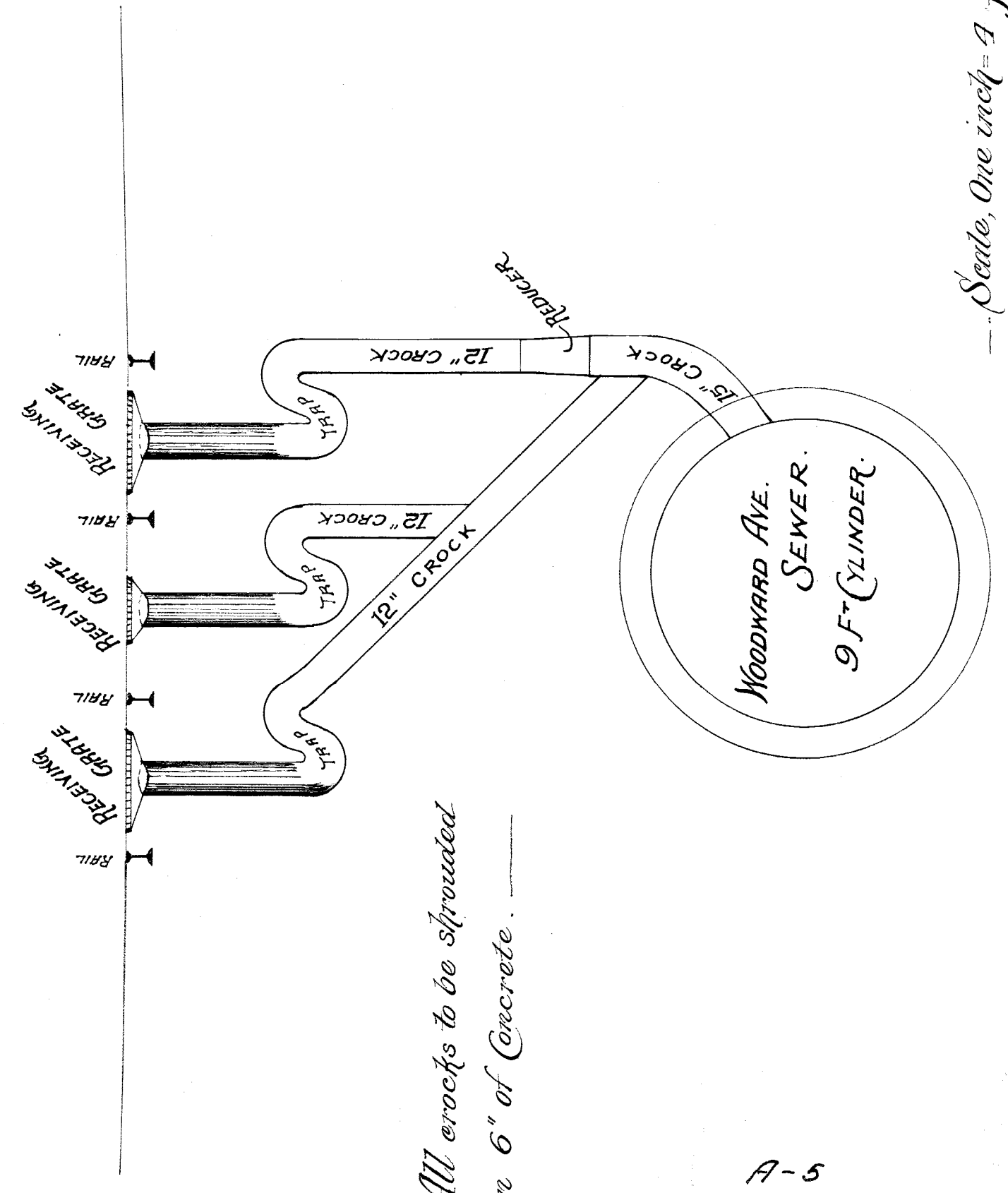
COURTESY COPY
NOT TO BE USED FOR BIDDING
OR CONSTRUCTION PURPOSES



PLAN SHOWING DRAINAGE OF ... WOODWARD AVENUE SUBWAY ...



PLAN.
Scale, One inch = 20 ft.



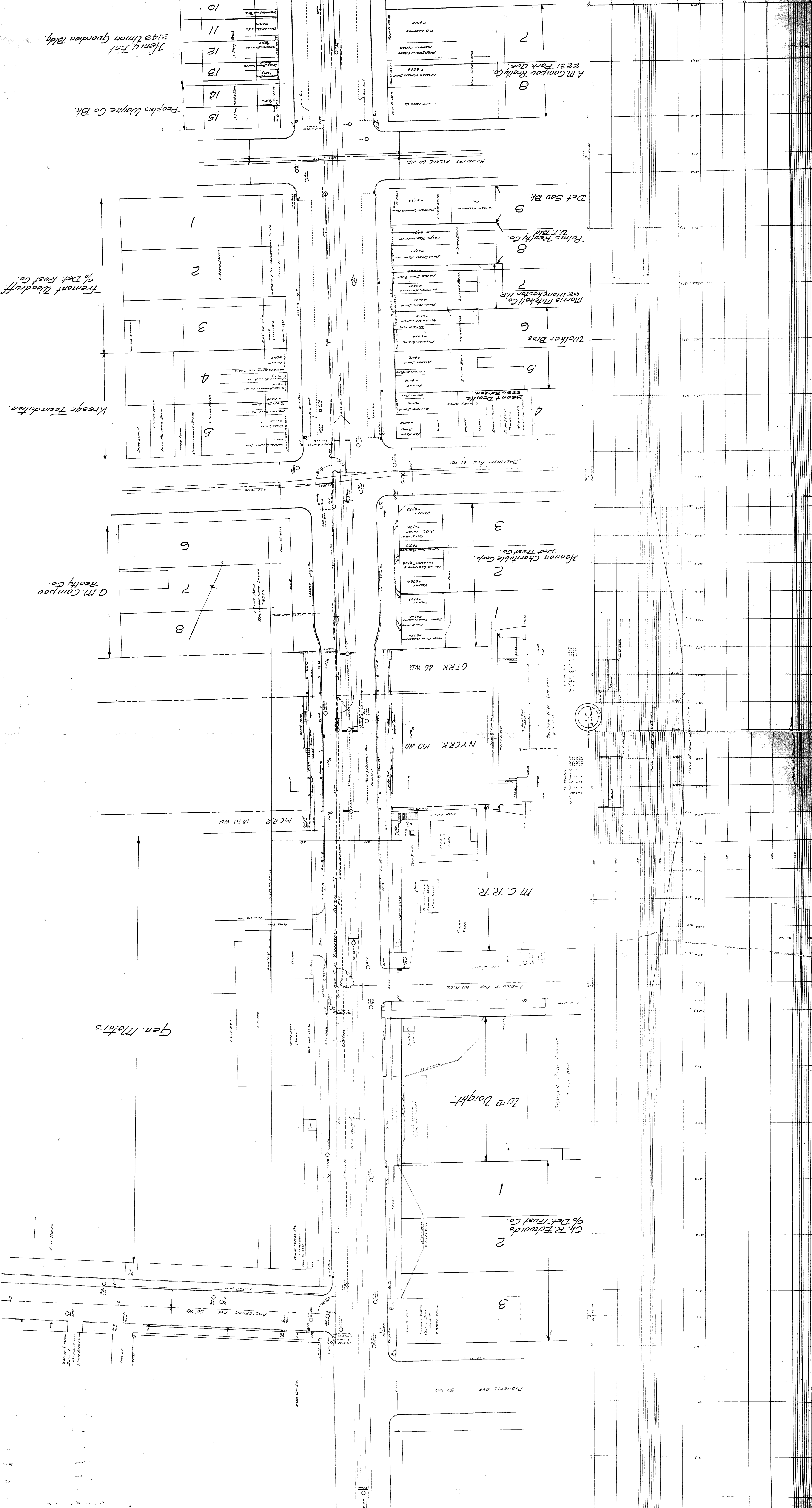
All crocks to be shrouded
in 6" of Concrete.

Scale, One inch = 4 ft.

A-5

CROSS SECTION AT A, B AND C

SEP 18 1900



10	Peoples Union Guardian Bldg.
11	Henry Est.
12	Peoples Union Guardian Bldg.
13	Peoples Union Guardian Bldg.
14	Peoples Union Guardian Bldg.
15	Peoples Union Guardian Bldg.

Kresge Foundation

O.M. Compou Realty Co.

Gen. Motors

C.R. Edwards 96 Det. Trust Co.

Wm. Dough.

Walker Bros.

Morris Mitchell Co. or Manchester H.P.

Folms Realty Co. U.T. Bldg.

Det. Sav. Bk.

A.M. Compou Realty Co. 2231 Park Ave.

Peoples Union Guardian Bldg.

Peoples Union Guardian Bldg.

Peoples Union Guardian Bldg.

Peoples Union Guardian Bldg.

Peoples Union Guardian Bldg.

Peoples Union Guardian Bldg.

Peoples Union Guardian Bldg.

Peoples Union Guardian Bldg.

Peoples Union Guardian Bldg.

Peoples Union Guardian Bldg.

Peoples Union Guardian Bldg.

Peoples Union Guardian Bldg.

Peoples Union Guardian Bldg.

Peoples Union Guardian Bldg.

Peoples Union Guardian Bldg.

Peoples Union Guardian Bldg.

Peoples Union Guardian Bldg.

Peoples Union Guardian Bldg.

Peoples Union Guardian Bldg.

Peoples Union Guardian Bldg.

Peoples Union Guardian Bldg.

Peoples Union Guardian Bldg.

Peoples Union Guardian Bldg.

Peoples Union Guardian Bldg.

Peoples Union Guardian Bldg.

Peoples Union Guardian Bldg.

Peoples Union Guardian Bldg.

Peoples Union Guardian Bldg.

Peoples Union Guardian Bldg.

Peoples Union Guardian Bldg.

Peoples Union Guardian Bldg.

Peoples Union Guardian Bldg.

Peoples Union Guardian Bldg.

Peoples Union Guardian Bldg.

Peoples Union Guardian Bldg.

Peoples Union Guardian Bldg.

Peoples Union Guardian Bldg.

Peoples Union Guardian Bldg.

Peoples Union Guardian Bldg.

Peoples Union Guardian Bldg.

Peoples Union Guardian Bldg.

Peoples Union Guardian Bldg.

Peoples Union Guardian Bldg.

Peoples Union Guardian Bldg.

Peoples Union Guardian Bldg.

Peoples Union Guardian Bldg.

Peoples Union Guardian Bldg.

Peoples Union Guardian Bldg.

Peoples Union Guardian Bldg.

Peoples Union Guardian Bldg.

Peoples Union Guardian Bldg.

Peoples Union Guardian Bldg.

Peoples Union Guardian Bldg.

Peoples Union Guardian Bldg.

Peoples Union Guardian Bldg.

Peoples Union Guardian Bldg.

Peoples Union Guardian Bldg.

Peoples Union Guardian Bldg.

Peoples Union Guardian Bldg.

Peoples Union Guardian Bldg.

Peoples Union Guardian Bldg.

Peoples Union Guardian Bldg.

Peoples Union Guardian Bldg.

Peoples Union Guardian Bldg.

Peoples Union Guardian Bldg.

Peoples Union Guardian Bldg.

Peoples Union Guardian Bldg.

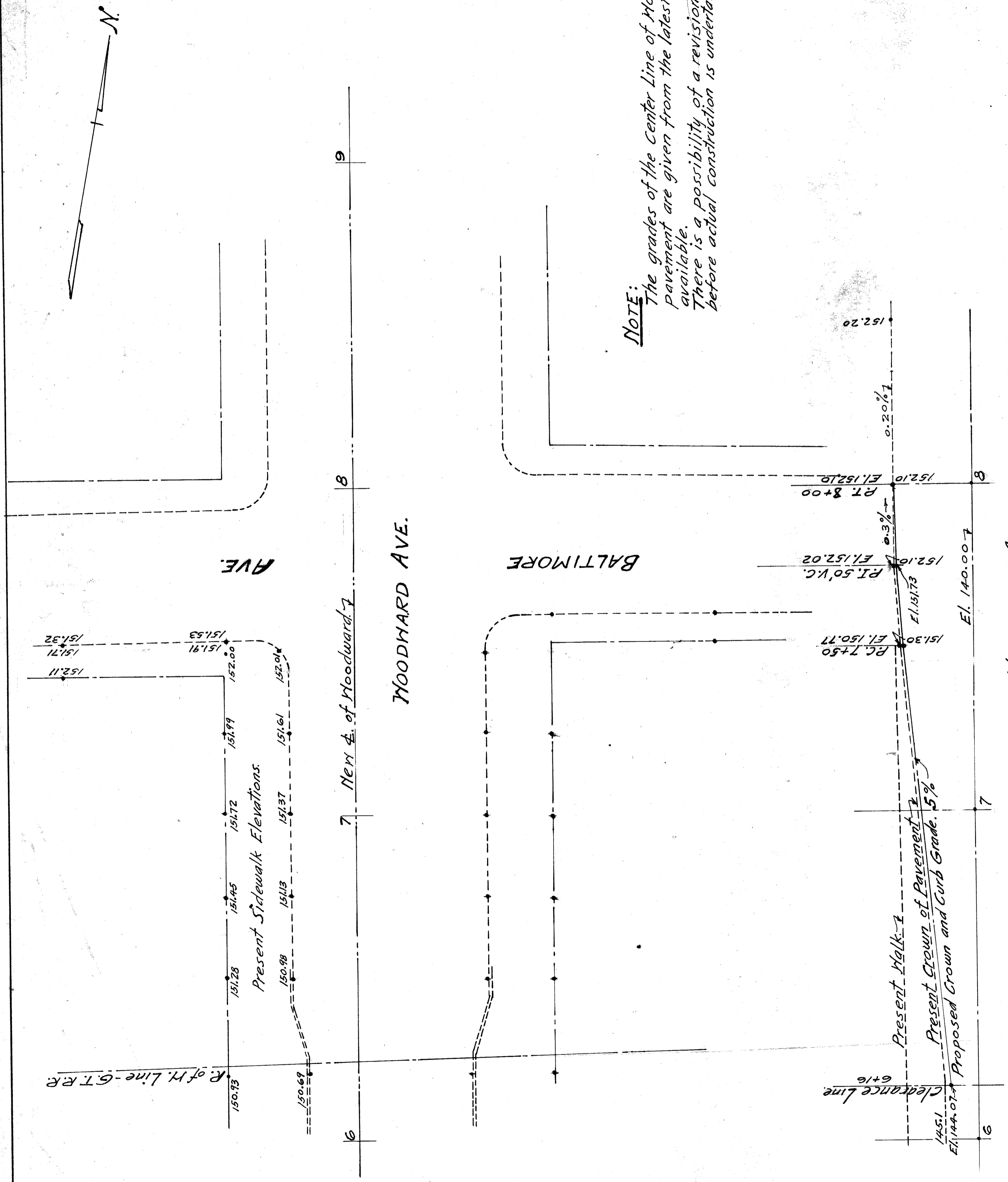
Peoples Union Guardian Bldg.

Peoples Union Guardian Bldg.

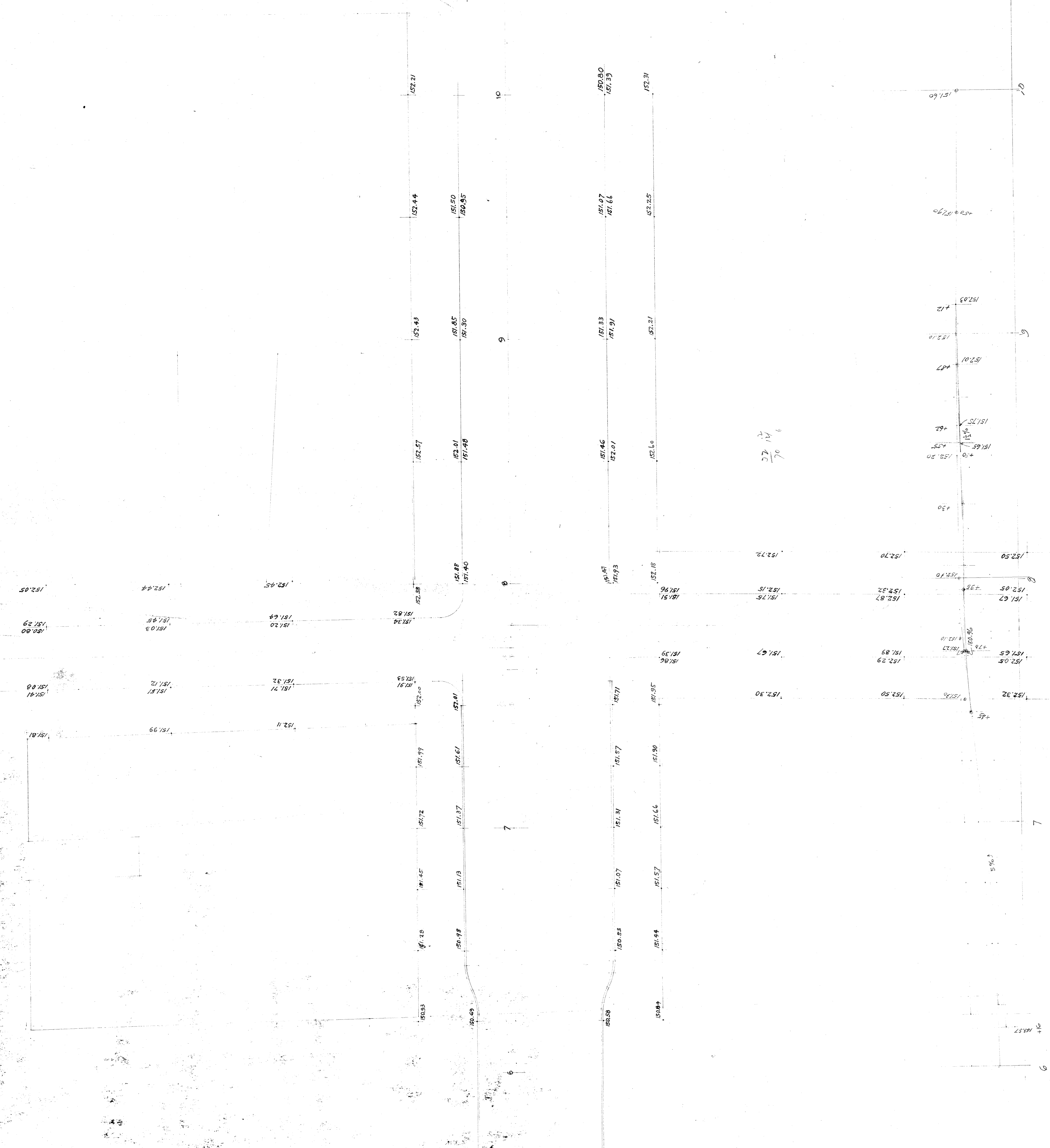
Peoples Union Guardian Bldg.

Peoples Union Guardian Bldg.

Peoples Union Guardian Bldg.



85 15.16-46 - 0.0352 - 5.04



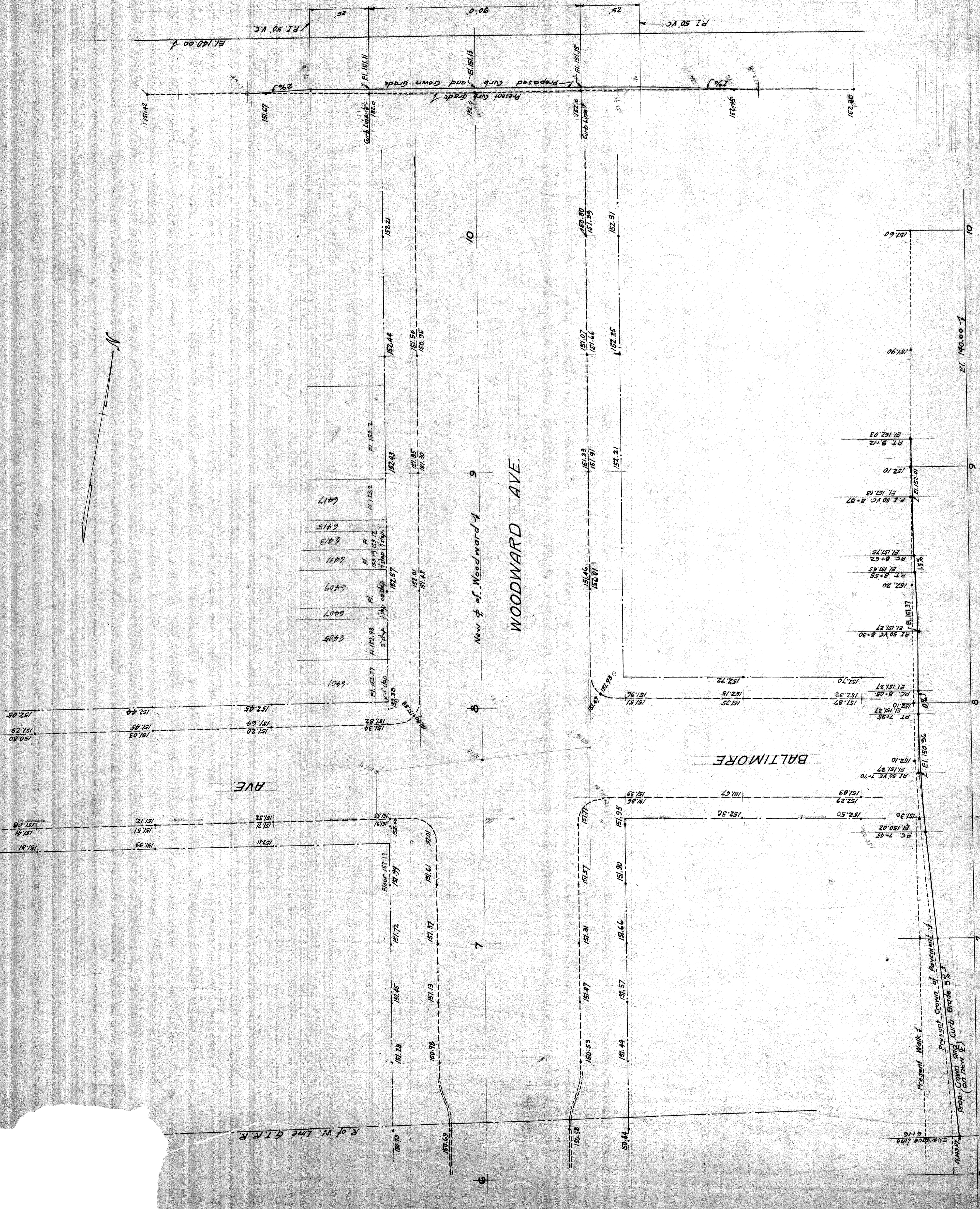
Woodward & Baltimore

File XUI-65

27/27

27/6

PROFILE OF BALTIMORE AVE.



PROFILE OF WOODWARD AVE

Scale: Horiz. 1" = 20', Vert. 1" = 10'

Prop. Crown of Pavement 1%
 Present Crown of Pavement 1%
 Prop. Crown and Curb Grade 5%
 Prop. (on front E.)

6401	PI 152.77	PI 152.78	PI 152.79	PI 152.80
6405	PI 152.77	PI 152.78	PI 152.79	PI 152.80
6407	PI 152.77	PI 152.78	PI 152.79	PI 152.80
6409	PI 152.77	PI 152.78	PI 152.79	PI 152.80
6411	PI 152.77	PI 152.78	PI 152.79	PI 152.80
6415	PI 152.77	PI 152.78	PI 152.79	PI 152.80
6417	PI 152.77	PI 152.78	PI 152.79	PI 152.80