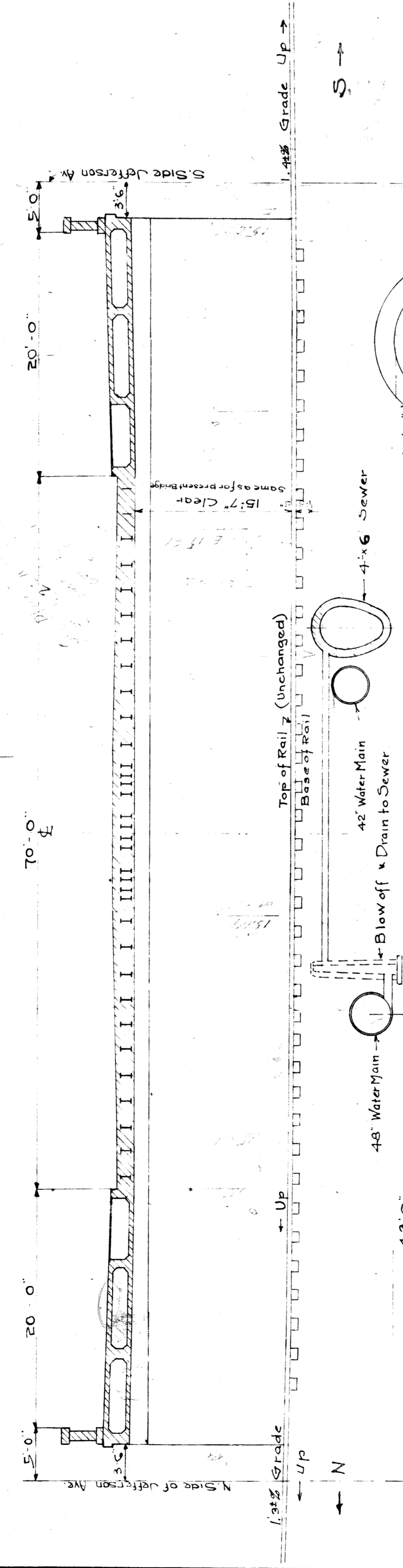
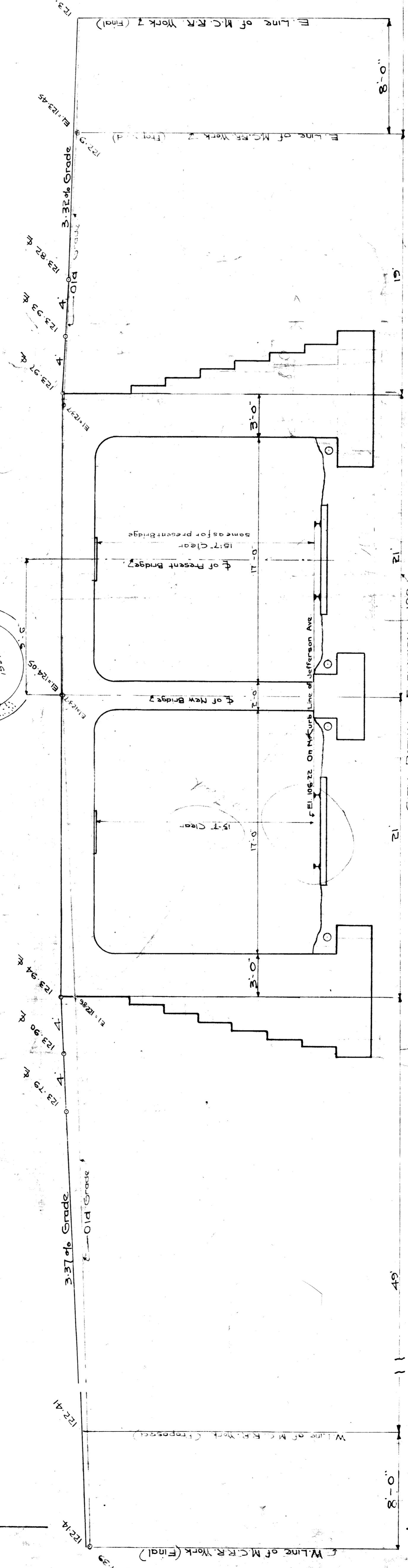
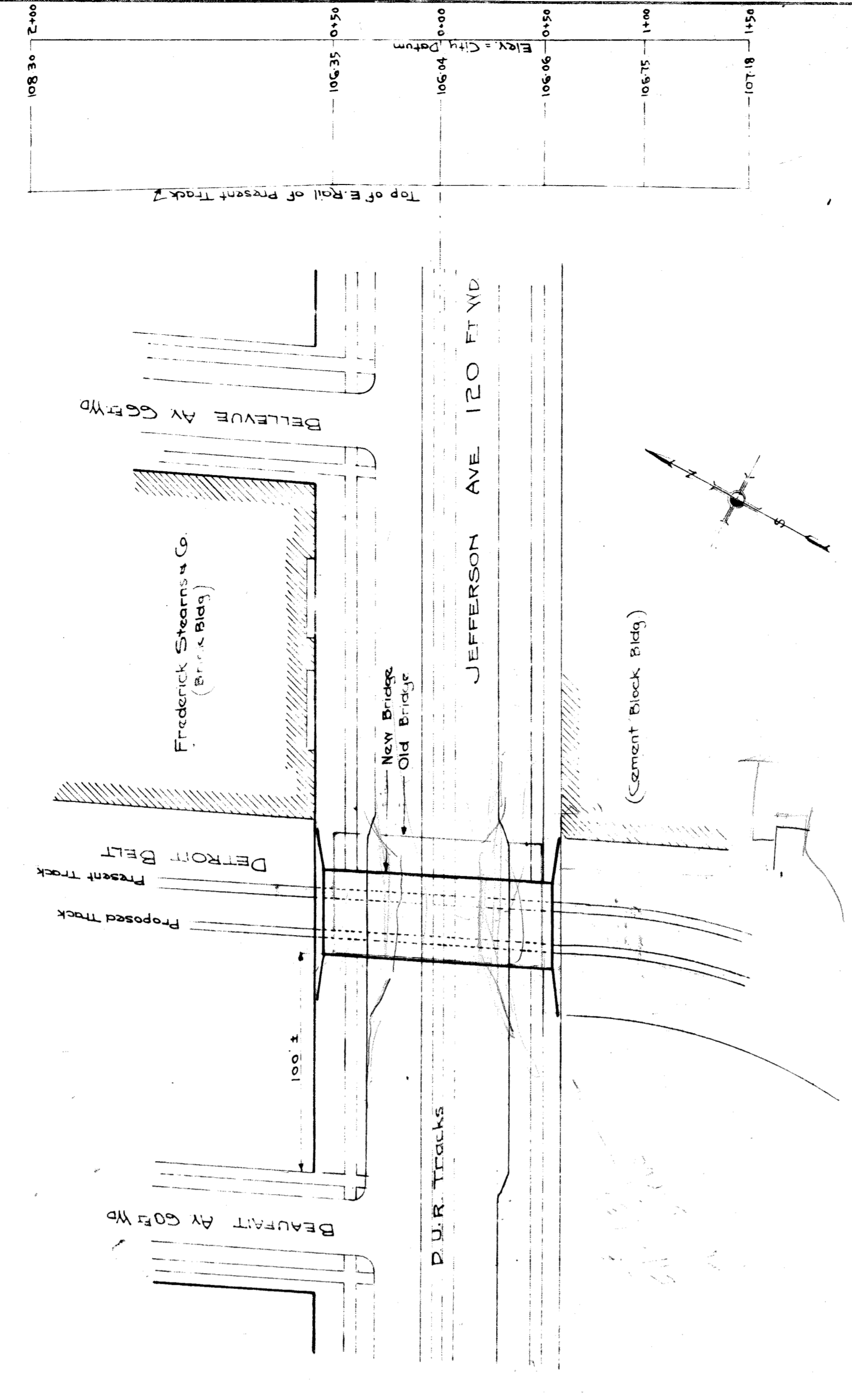


HALF SECTION AT ABUTMENT



CROSS SECTION OF JEFFERSON AVE LOOKING EAST

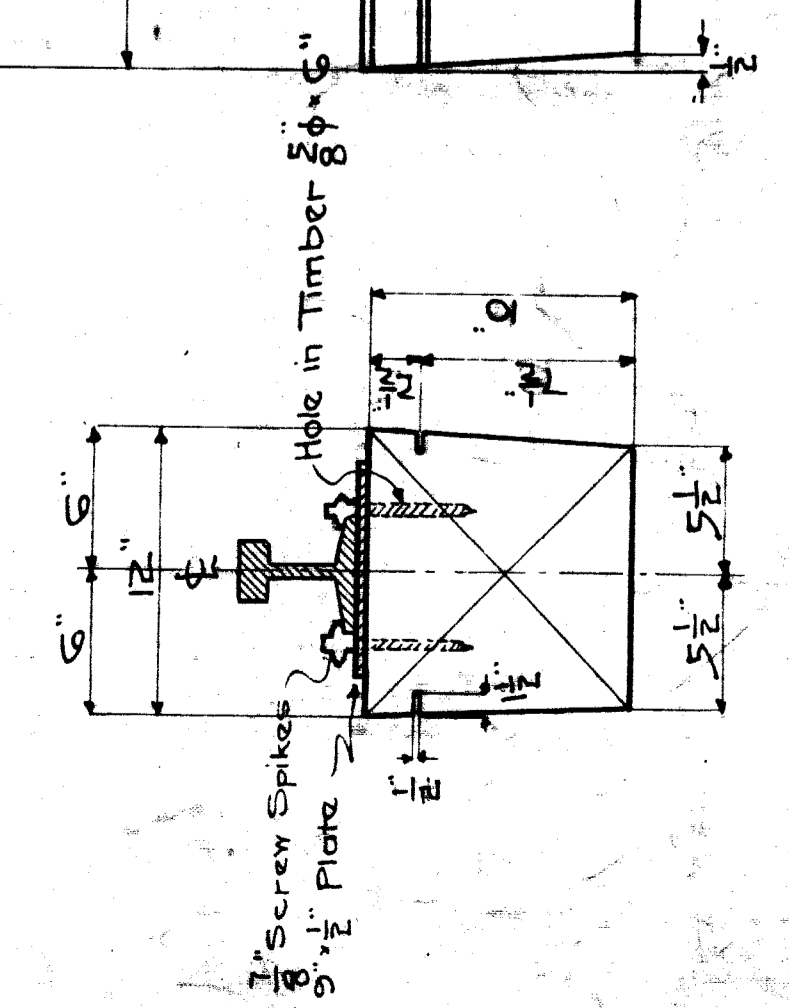
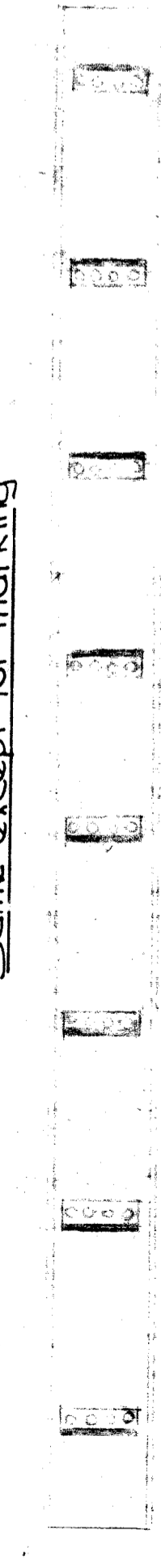
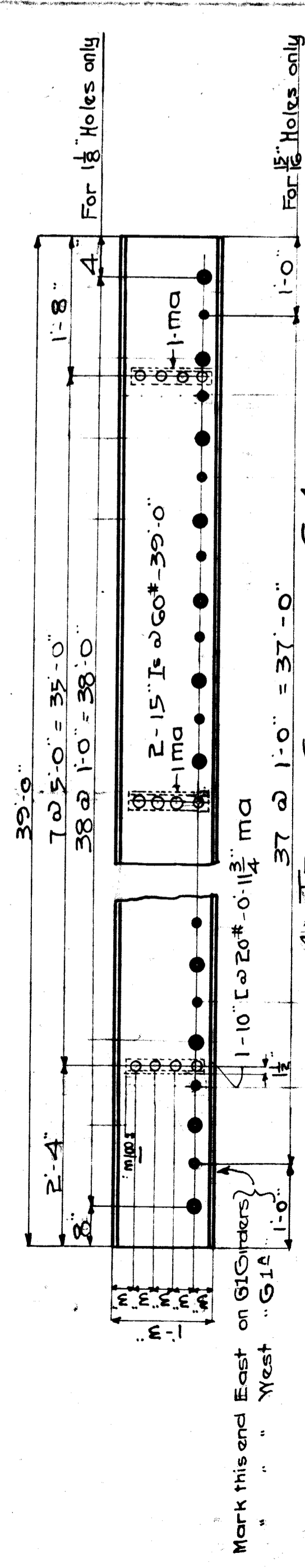
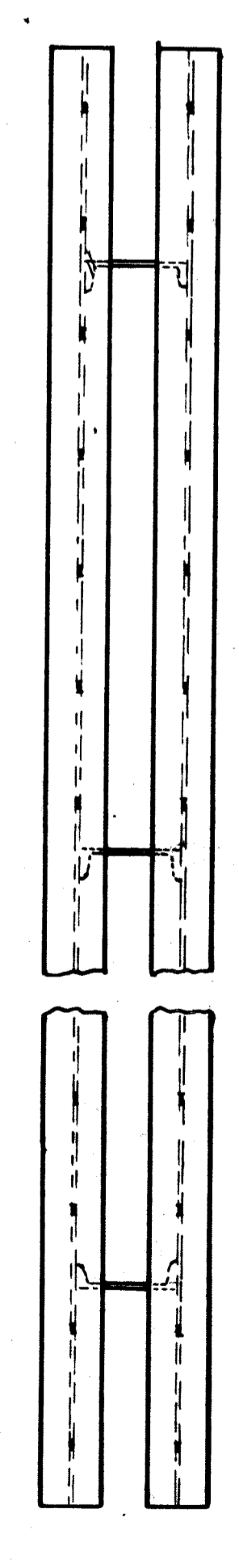
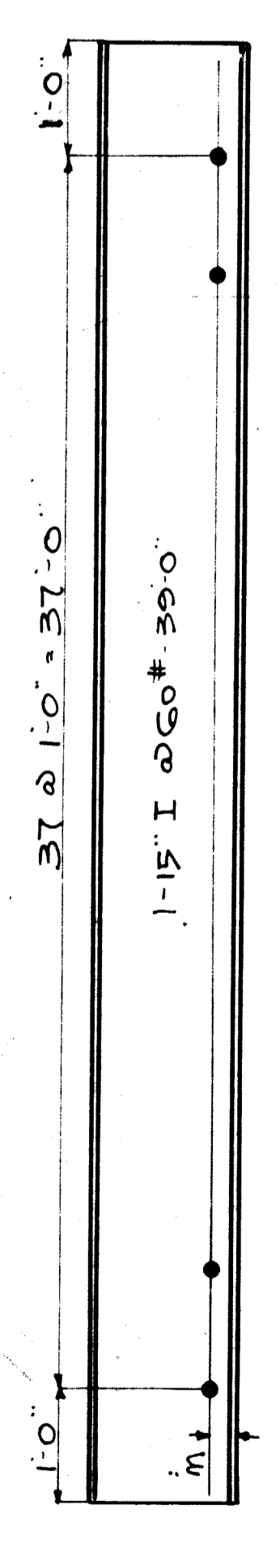
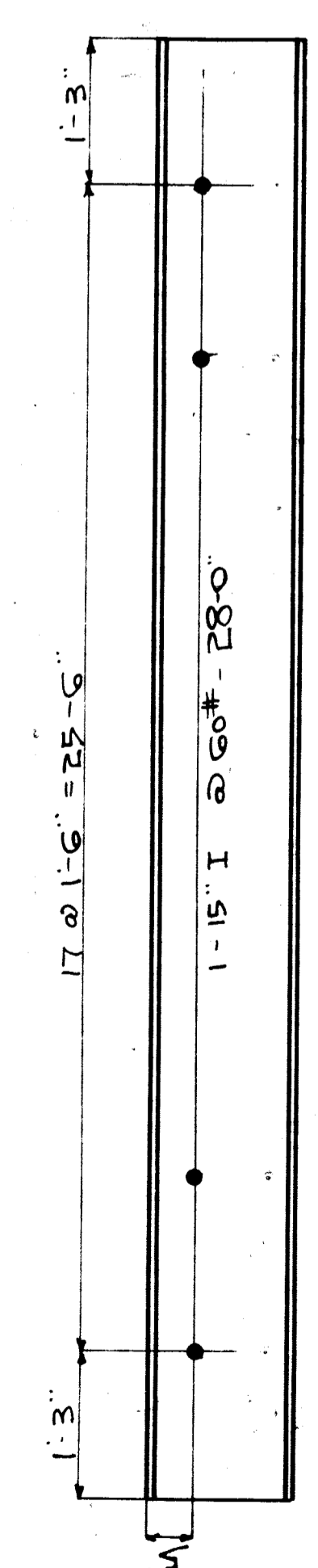
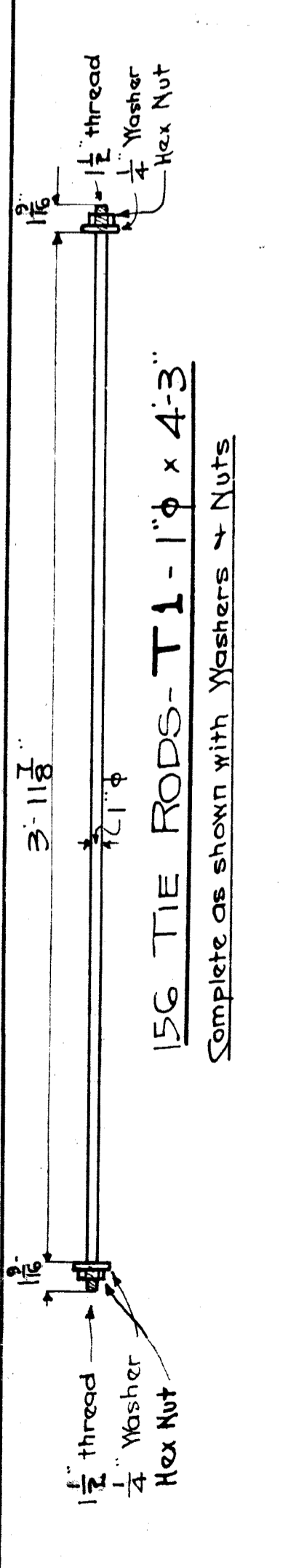


SECTION - AA SHOWING PROFILE OF JEFFERSON AV

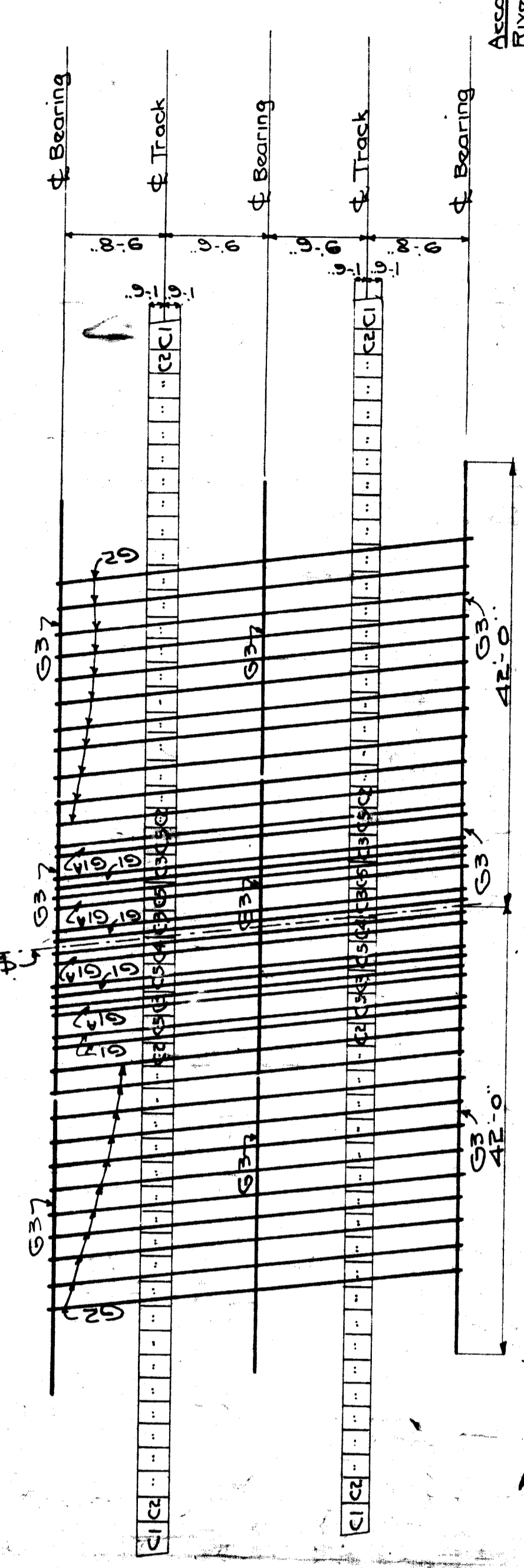
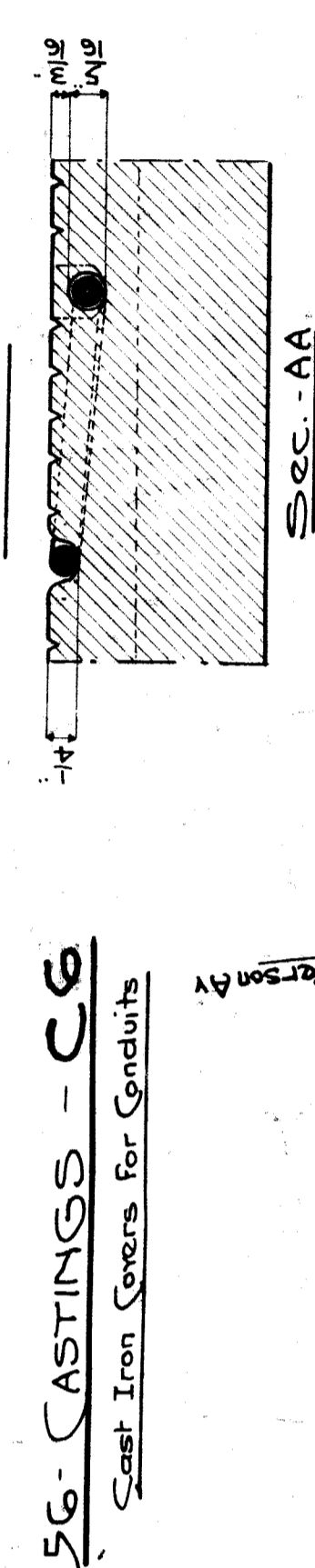
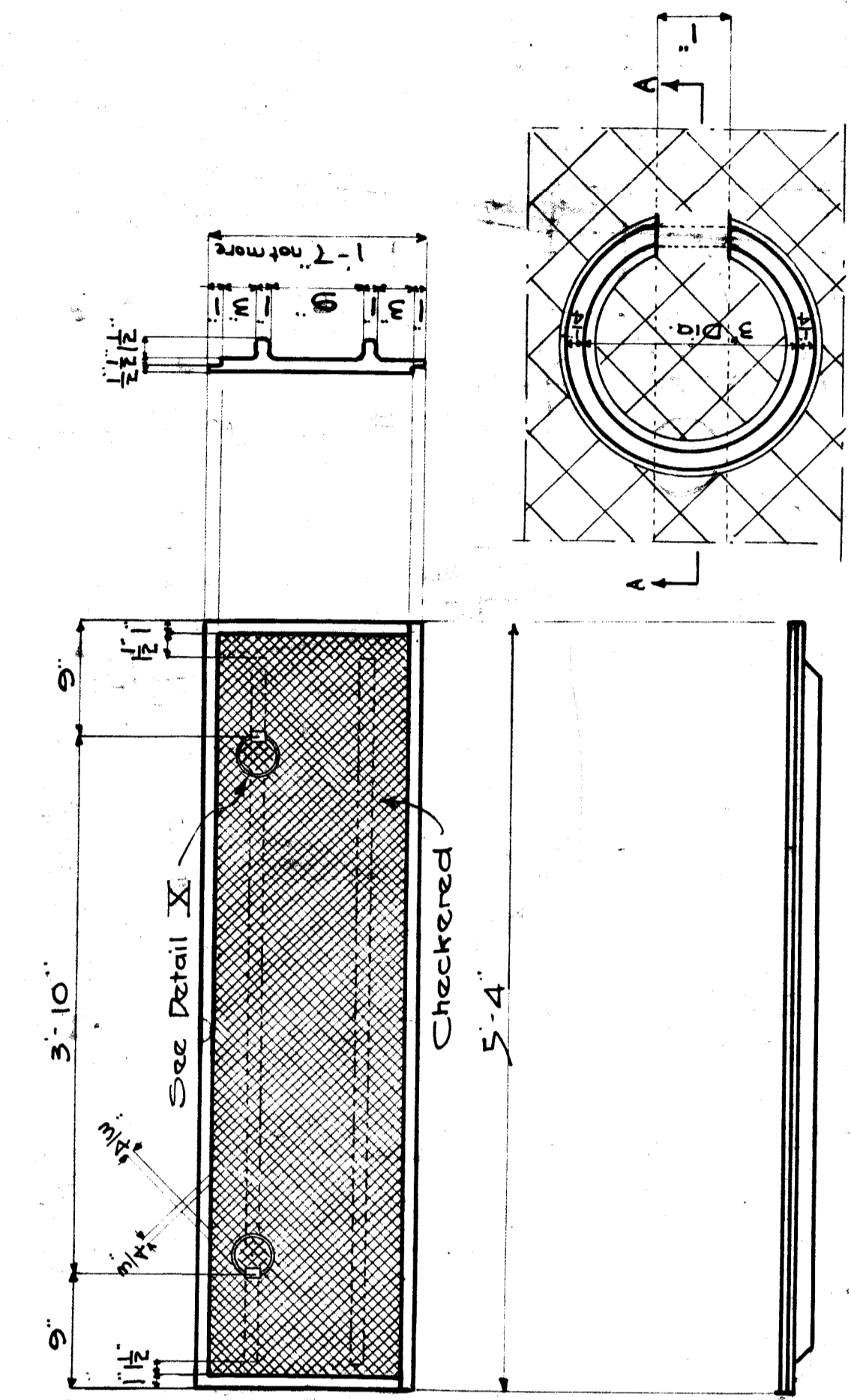
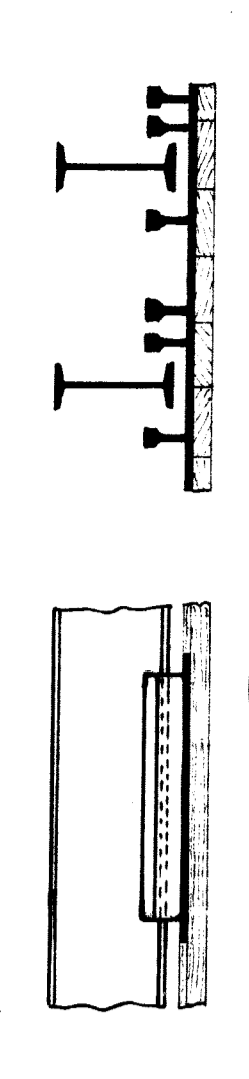
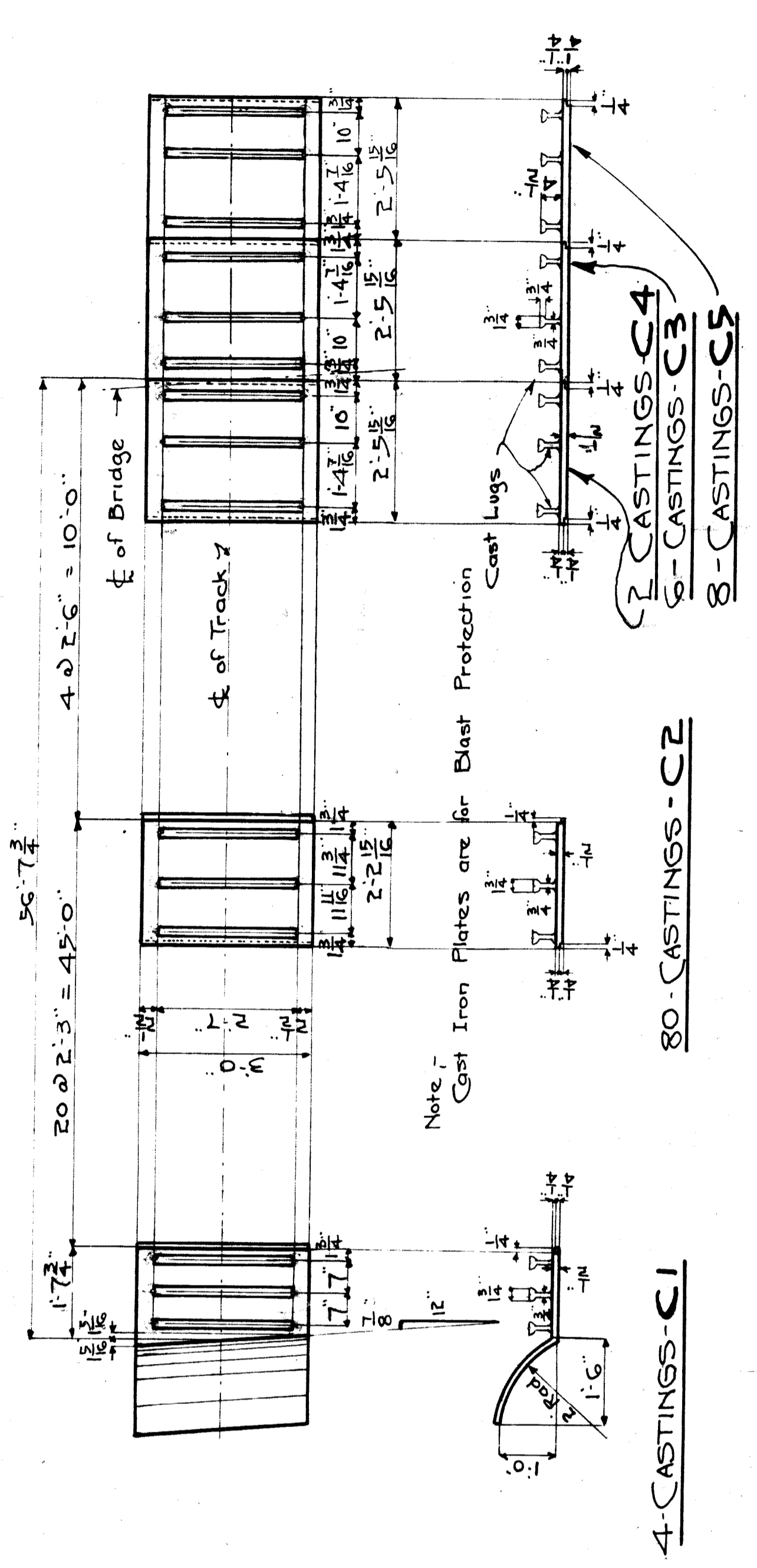
WEST ←

→ EAST

M. C. R. R. - DETROIT BELT
 Bridge JEFFERSON AVE. E. - O. H.
GENERAL DRAWING
 Scale: 1" = 10'-0"
 Approved: *[Signature]*
 Drawn by: L. H. H. - A. J. H.
 Checked by: G. E. J. H.
 Chief Engineer, Traced by: J. H. H. H.
 Revised: June 12, 1916



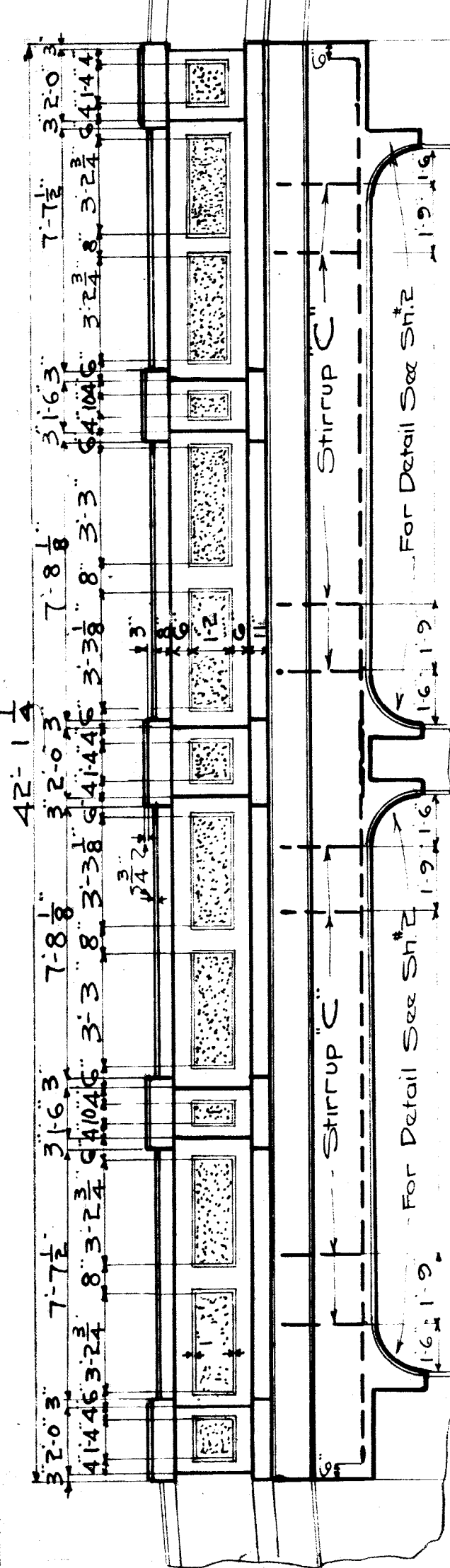
8-CREOSOTED TIMBERS



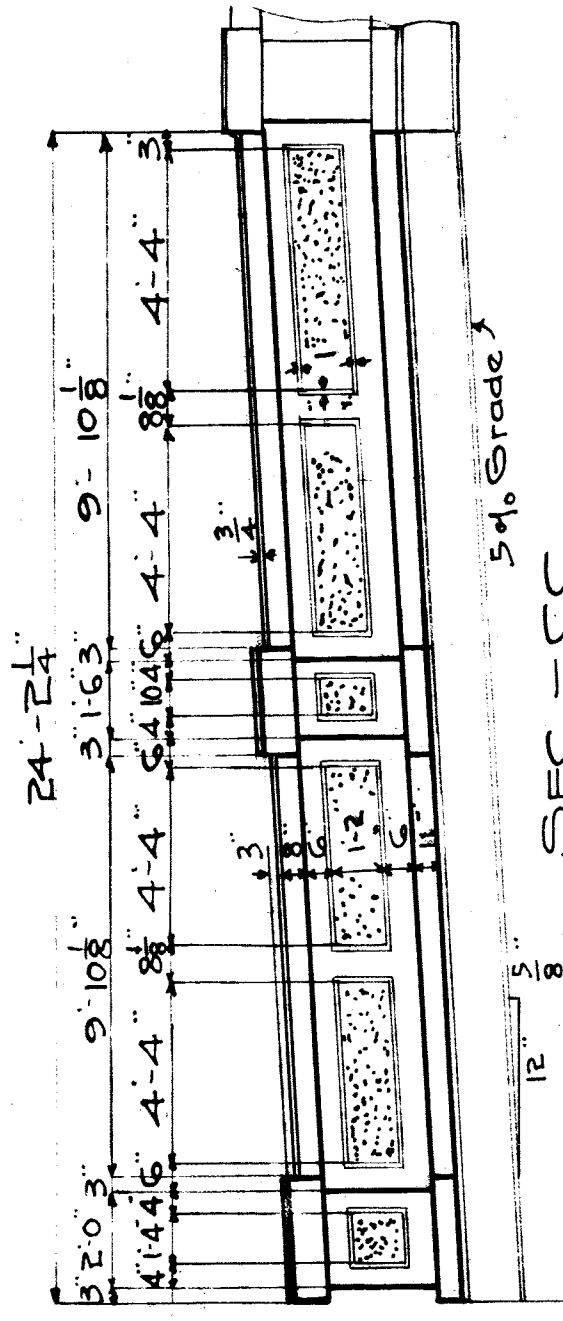
NOTES
According to N.Y.S. 1210 Specifications
Fillet 5/16"
Open Holes 1/2" unless noted

M. C. R. DIV. - DETROIT BELT
BRIDGE JEFFERSON AVE. E. O. H.
STEEL DETAILS

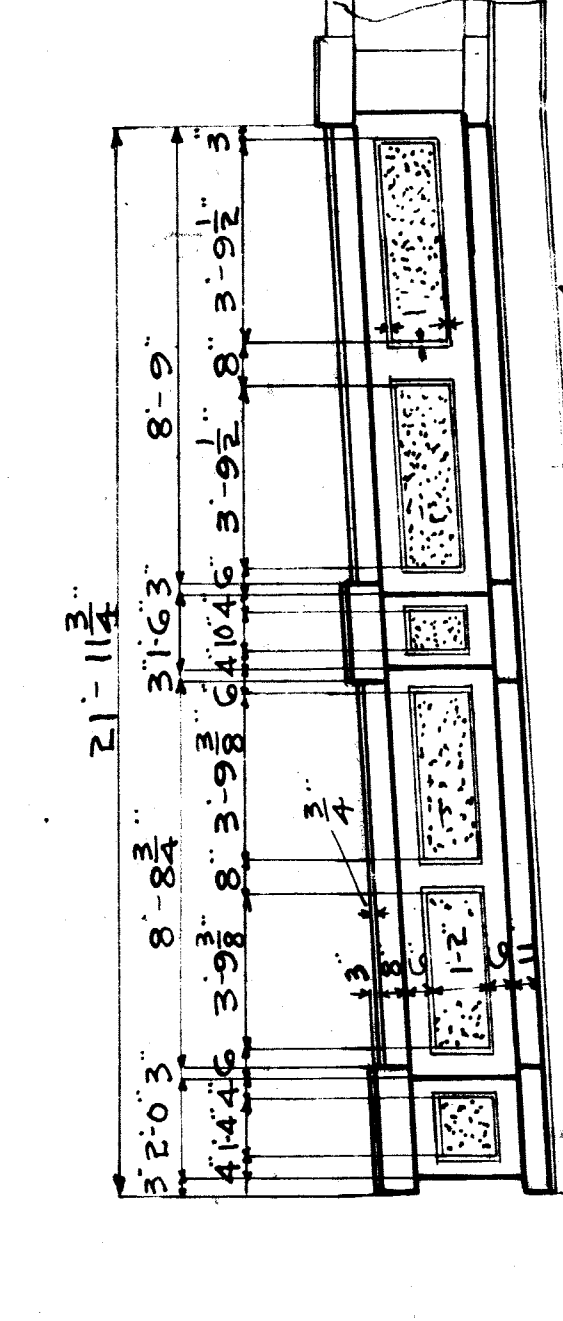
Approved: _____
Scale: in-1 foot
Drawn by: J. C. M. 10/23/16
Checked by: G. E. 10/23/16
Chief Engineer: J. C. M. 10/23/16
Revised: _____
Sheet 4 of 4



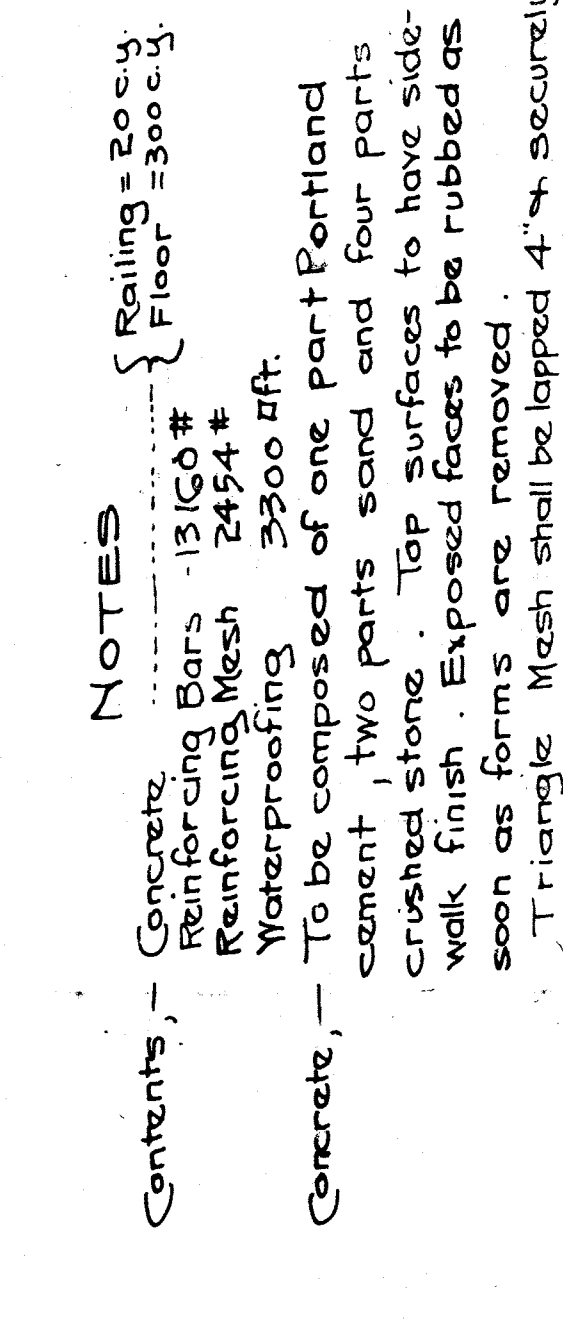
SEC. BB



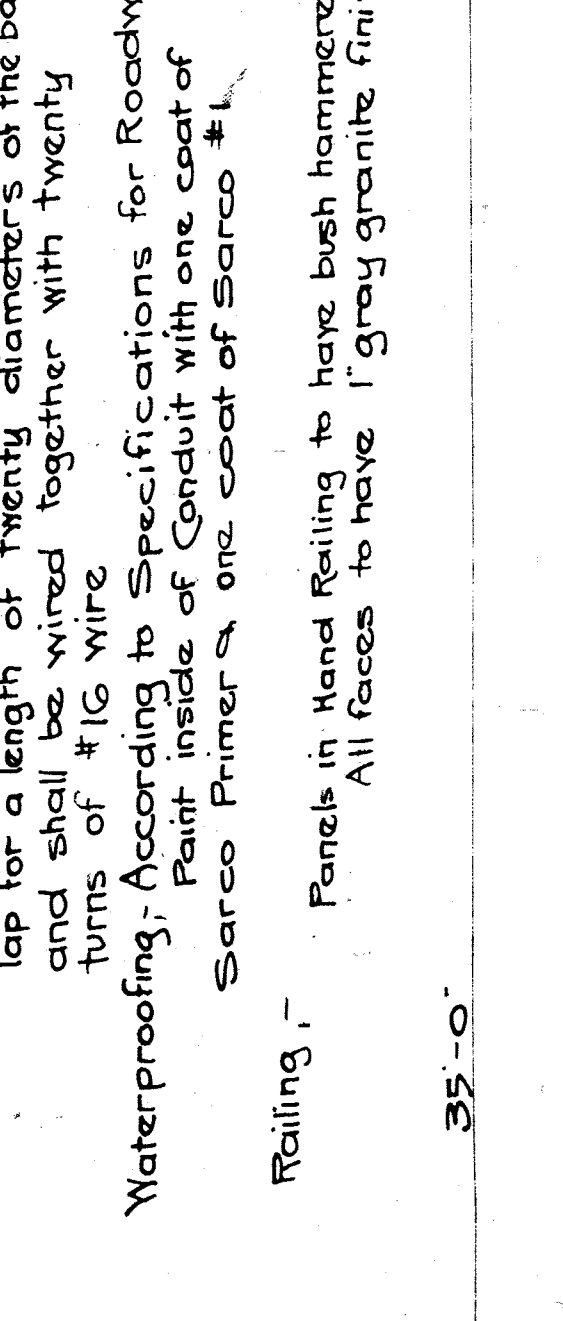
SEC. CC



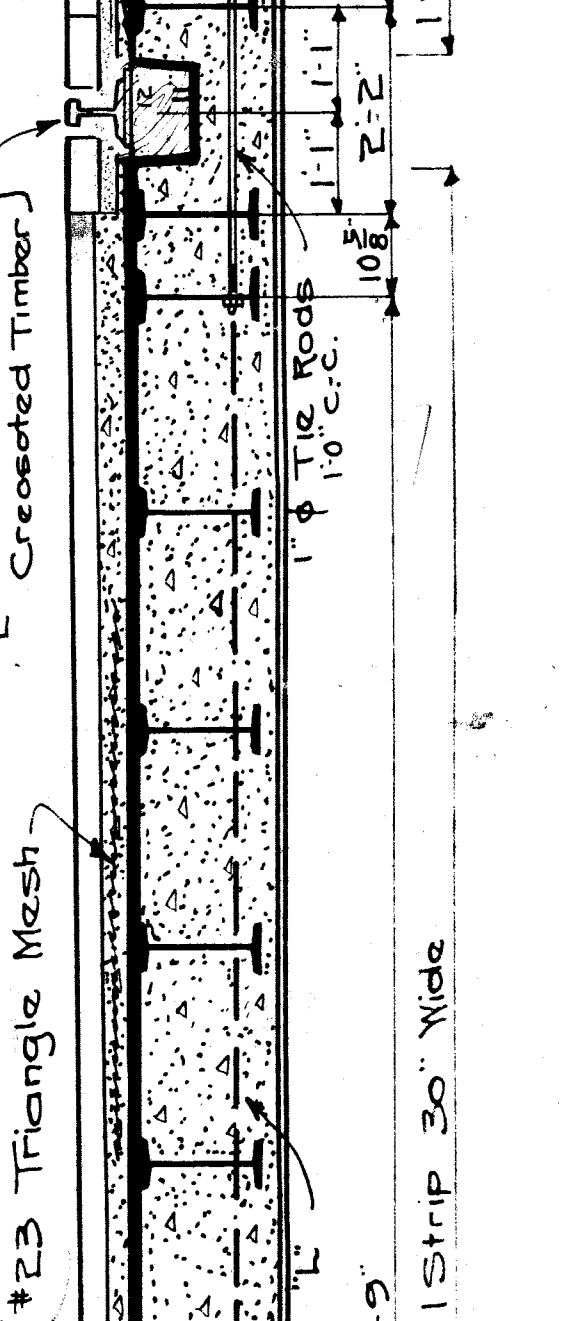
SEC. EE



SEC. DD



SEC. FF



BILL OF REINFORCING

No	SIZE	LENGTH	MARK	LOCATION
G4	1/2"	22'-0"	A	Side-walk Beams
G5	1/2"	22'-0"	B	"
G6	1/2"	5'-0"	C	Dowels in Floor of Posts
G7	1/2"	2'-0"	D	Top Bars in Top Slab
G8	1/2"	5'-0"	E	Top Slab Reinforcing
G9	1/2"	3'-0"	F	"
G10	1/2"	15'-0"	G	Top Slab Reinforcing
G11	1/2"	21'-0"	H	"
G12	1/2"	21'-3"	K	Top of Slab - Lengthwise
G13	1/2"	25'-0"	L	Roadway Rein.
G14	1/2"	23'-0"	M	"
G15	1/2"	in Pt. of #23 Triangle	N	Mesh 30" Wide
G16	1/2"	4'-6"	O	"
G17	1/2"	21'-2 1/2"	P	Curb L.
G18	1/2"	21'-2 1/2"	Q	"
G19	1/2"	15'-0"	R	6'-0" long for Conduit
G20	1/2"	18'-0"	S	Bars for Curb L.
G21	1/2"	28'-0"	T	pc of 1/4" x 1/2" x 1/2" 15'-0" long for Conduit

NOTES

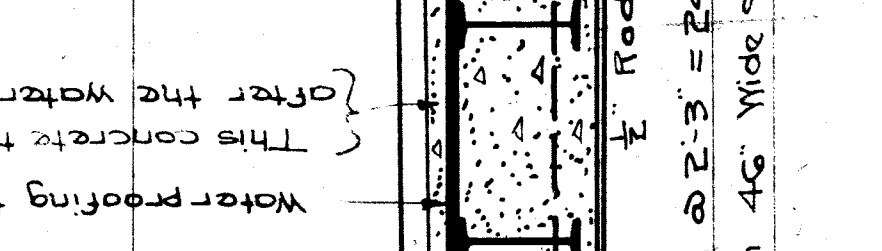
Reinforcing Bars - 13160 #
 Reinforcing Mesh - 2454 #
 Waterprooing - 2300 #ft.

Concrete - To be composed of one part Portland cement, two parts sand and four parts crushed stone. Top surfaces to have side-walk finish. Exposed faces to be rubbed as soon as forms are removed.

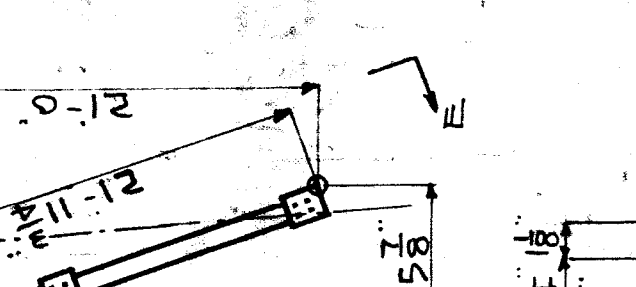
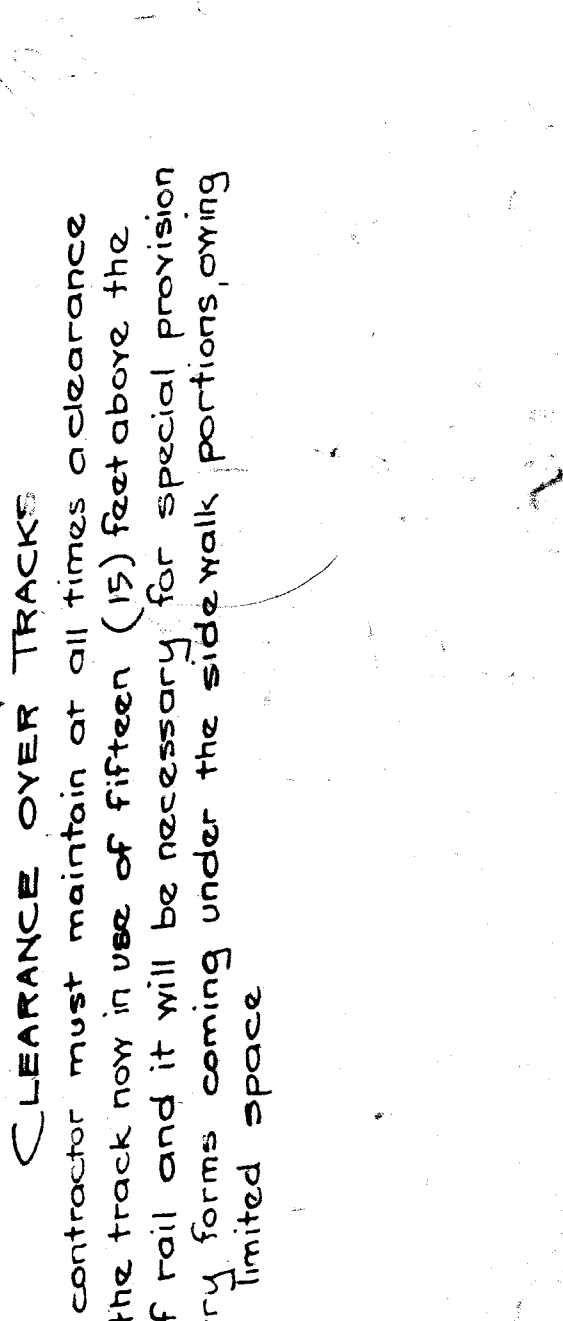
Reinforcing - Triangles Mesh shall be lapped 4" and securely wired at each intersection. At splices they shall lap for a length of twenty diameters of the bar and shall be wired together with twenty turns of #10 wire.

Waterprooing - According to Specifications for Roadway (Separate Contract)
 Paint inside of Conduit with one coat of Sarco Primer and one coat of Sarco #1.

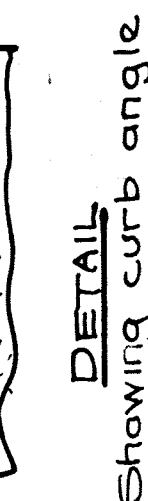
Railing - Panels in Hand Railing to have bush hammered finish. All faces to have 1" gray granite finish.



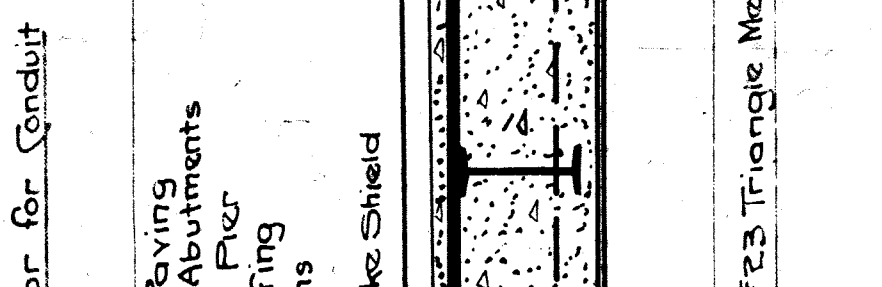
SECTION-AA



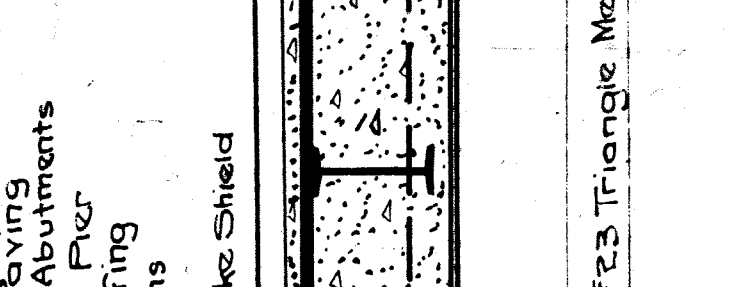
DETAIL Showing curb angle



DETAIL OF SHIRUP 1/2" Bar 5'-0" long - C



DETAIL Showing Edge Protector for Conduit



DETAIL of Asphalt Paving



DETAIL of Hand Rail and Coping to be thus -

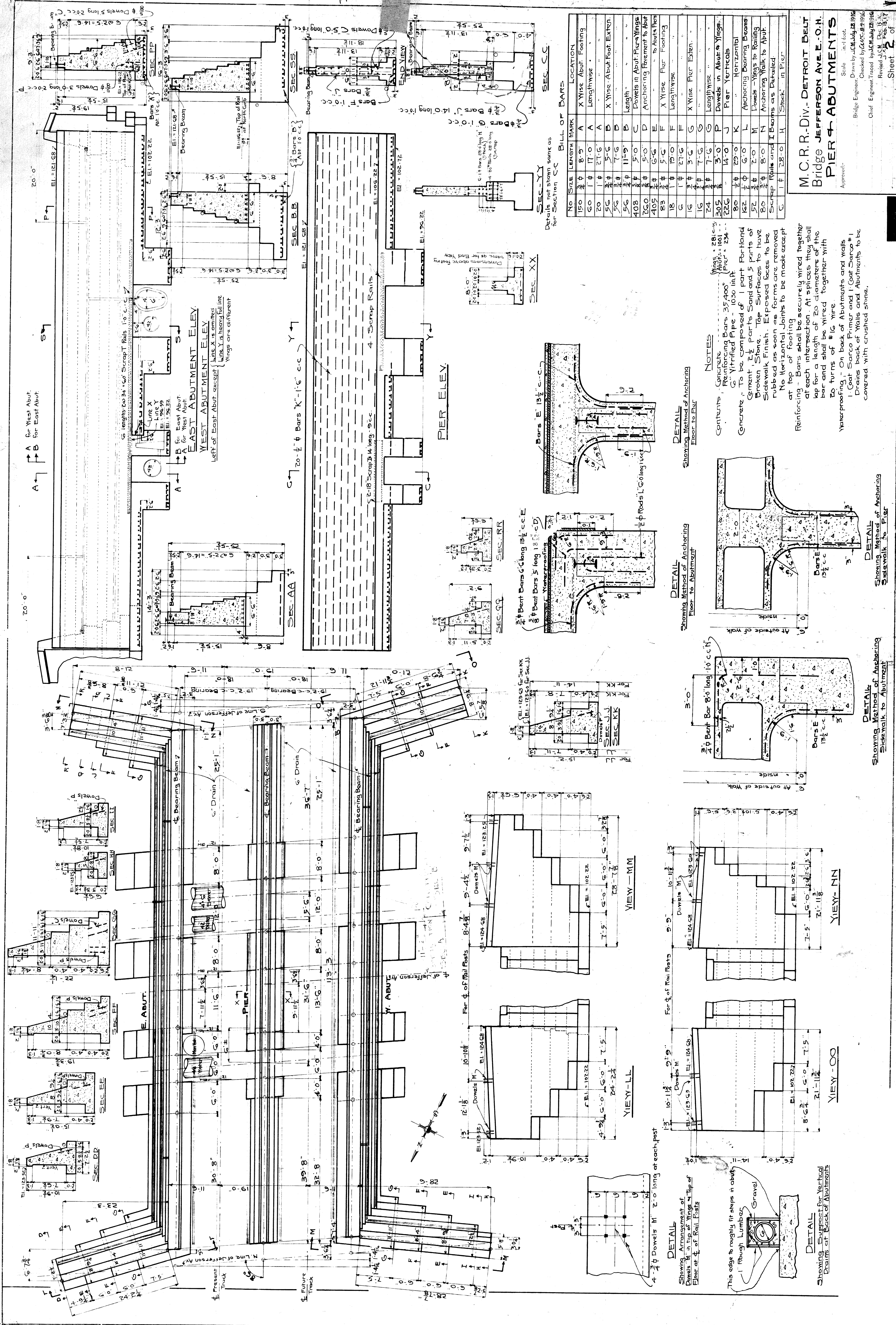
NOTE

All Beveled Corners of Hand Rail and Coping to be thus -

CLEARANCE OVER TRACKS

The contractor must maintain at all times a clearance over the track now in use of fifteen (15) feet above the top of rail and it will be necessary for special provision to carry forms coming under the side walk portions owing to the limited space

4'-22 Detroit Belt File X098-3

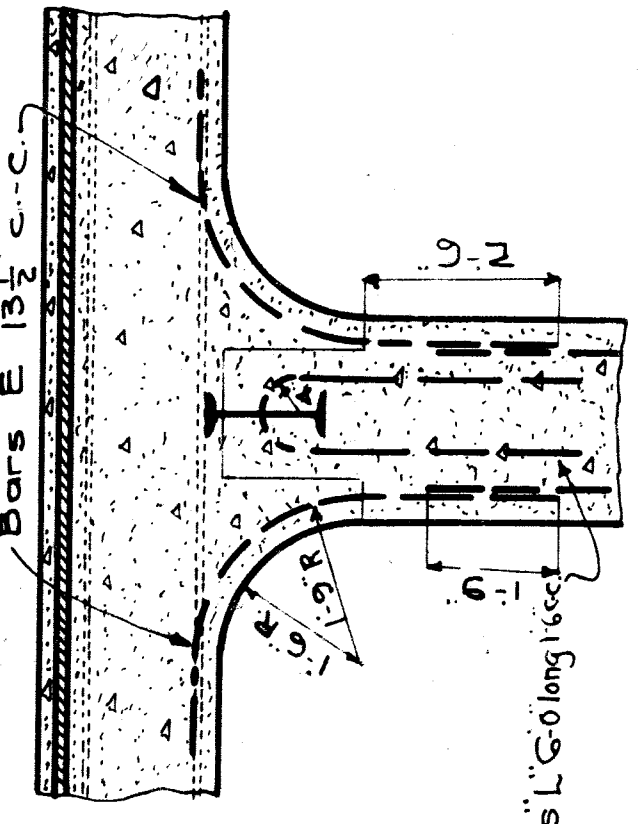


A for West Abut.
B for East Abut.

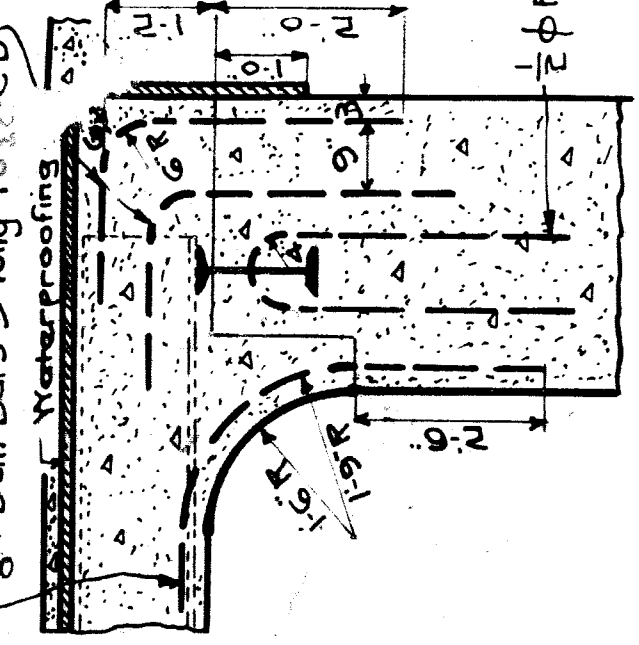
WEST ABUTMENT ELEY
EAST ABUTMENT ELEY
Left of East Abut except Line X is omitted
Line X is heavy fall line
Wings are different

20'-0" Bars 'K'-1'6" c-c

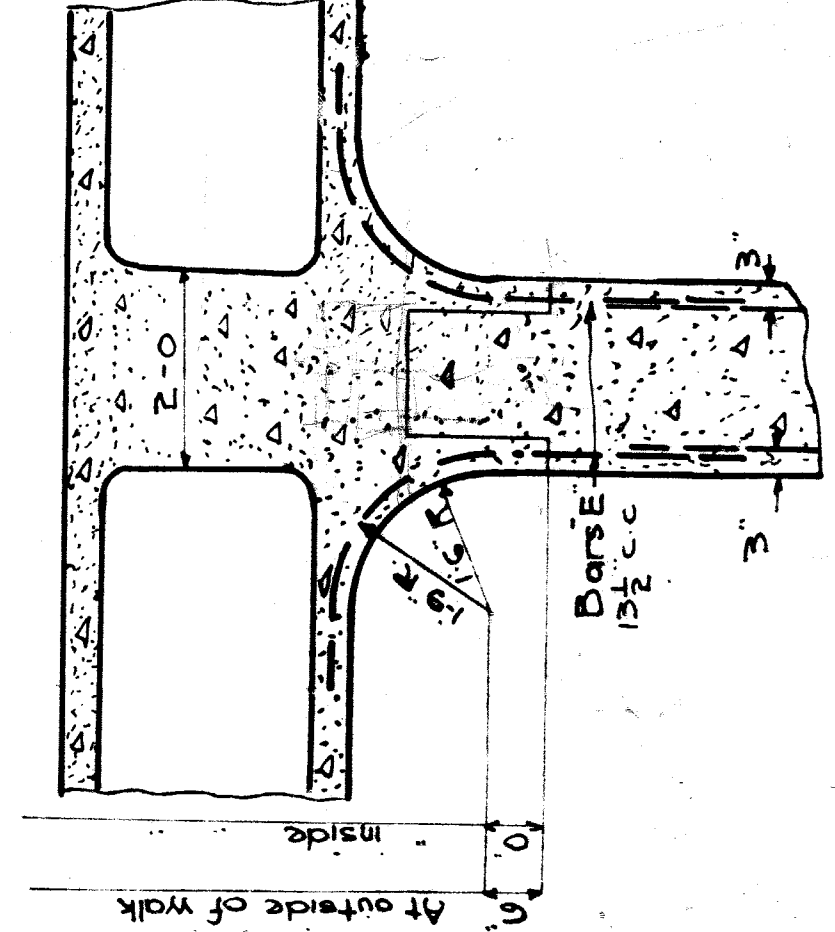
PIER ELEY



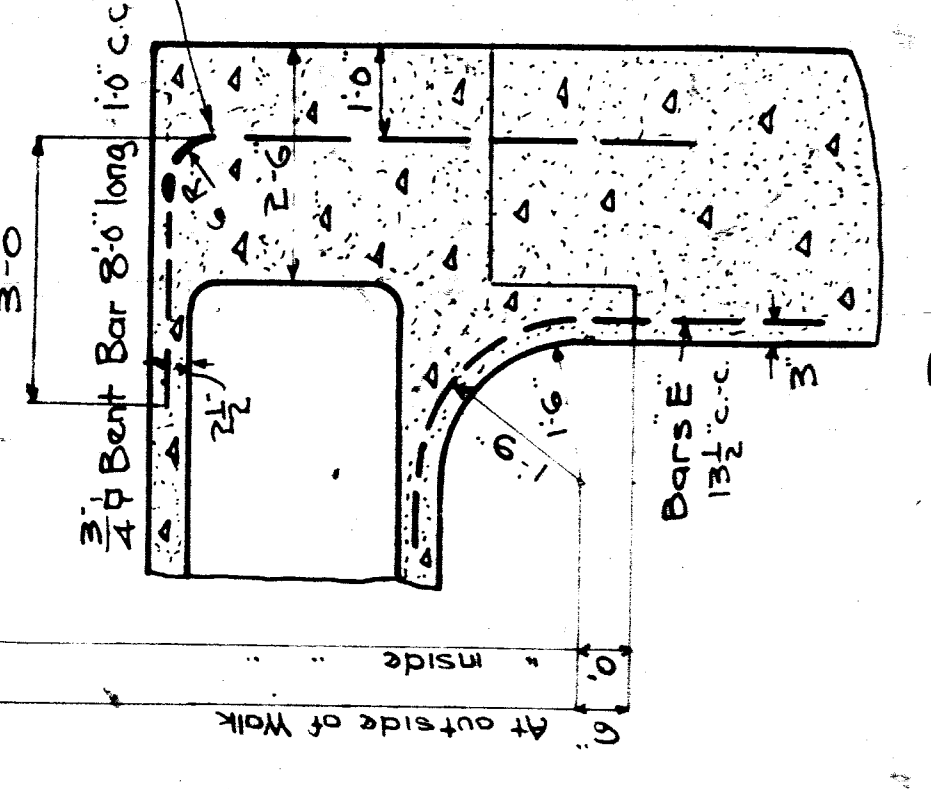
DETAIL showing Method of Anchoring Floor to Pier



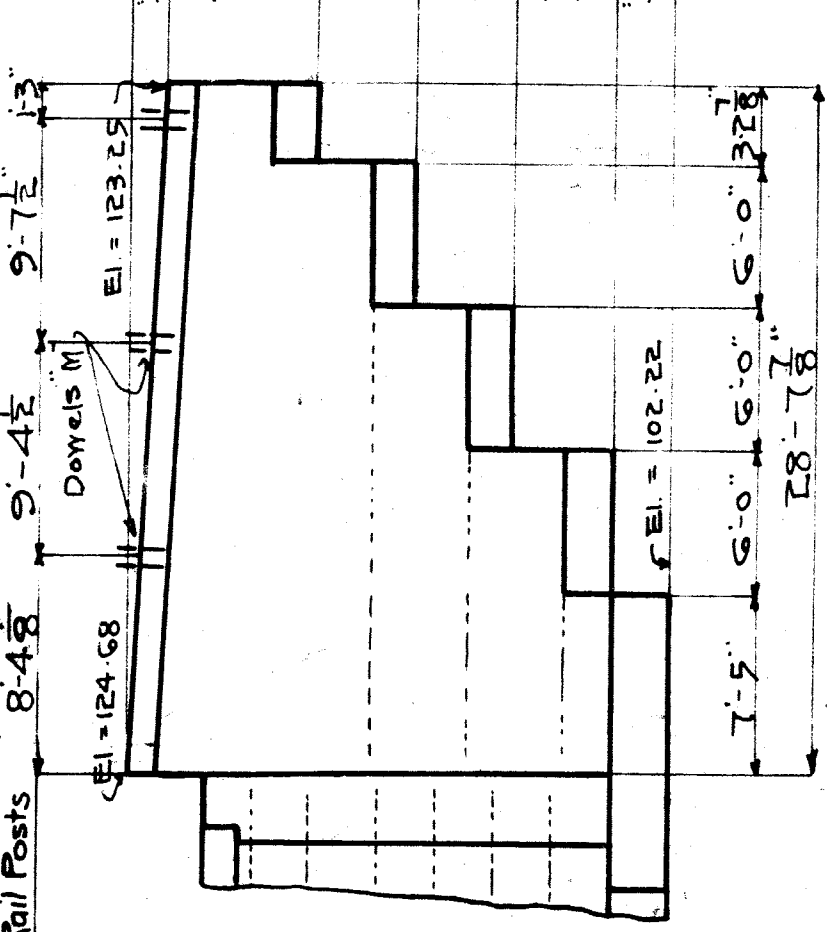
DETAIL showing Method of Anchoring Floor to Abutment



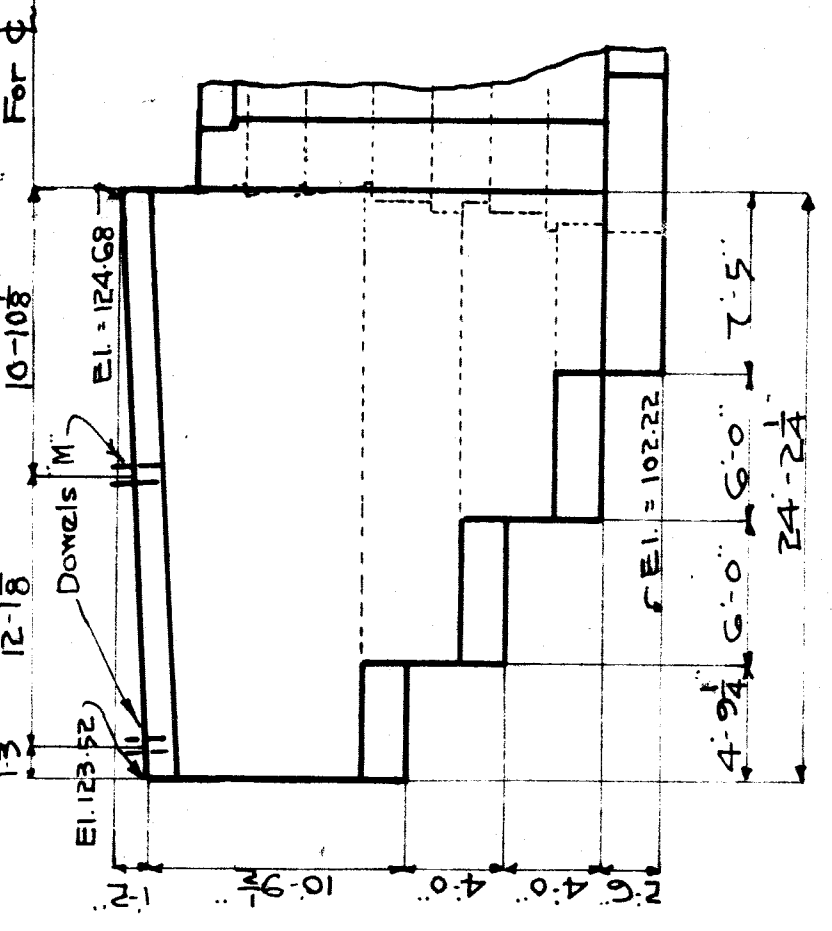
DETAIL showing Method of Anchoring Sidewalk to Pier



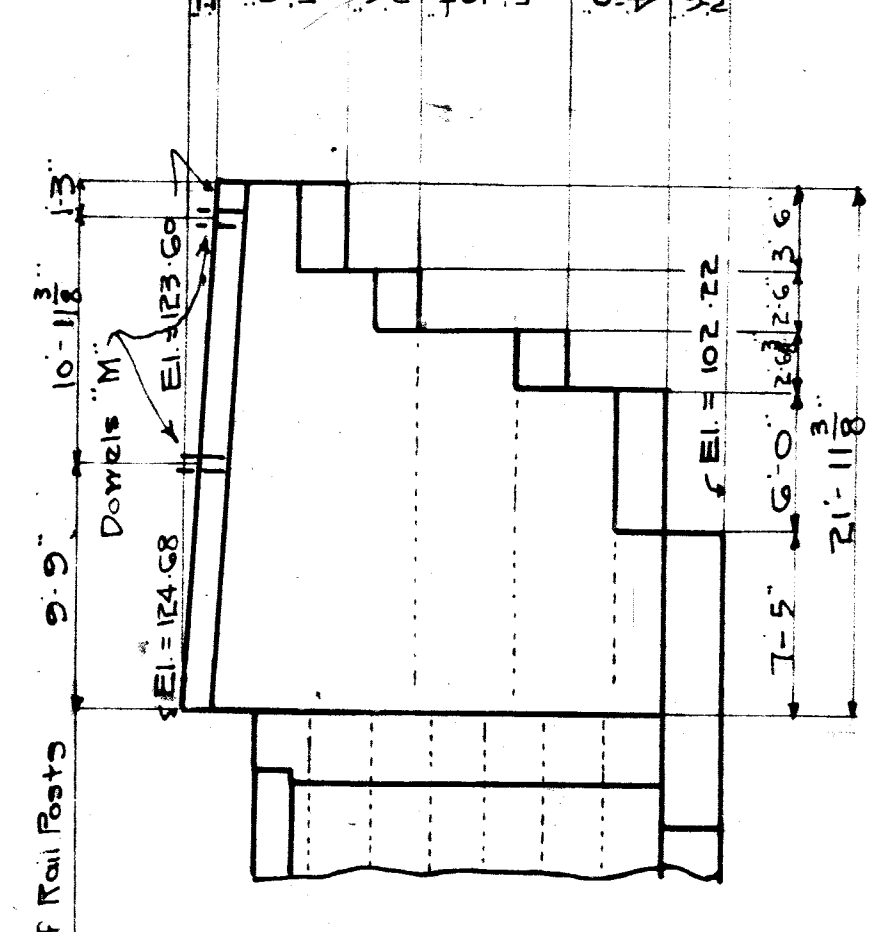
DETAIL showing Method of Anchoring Sidewalk to Abutment



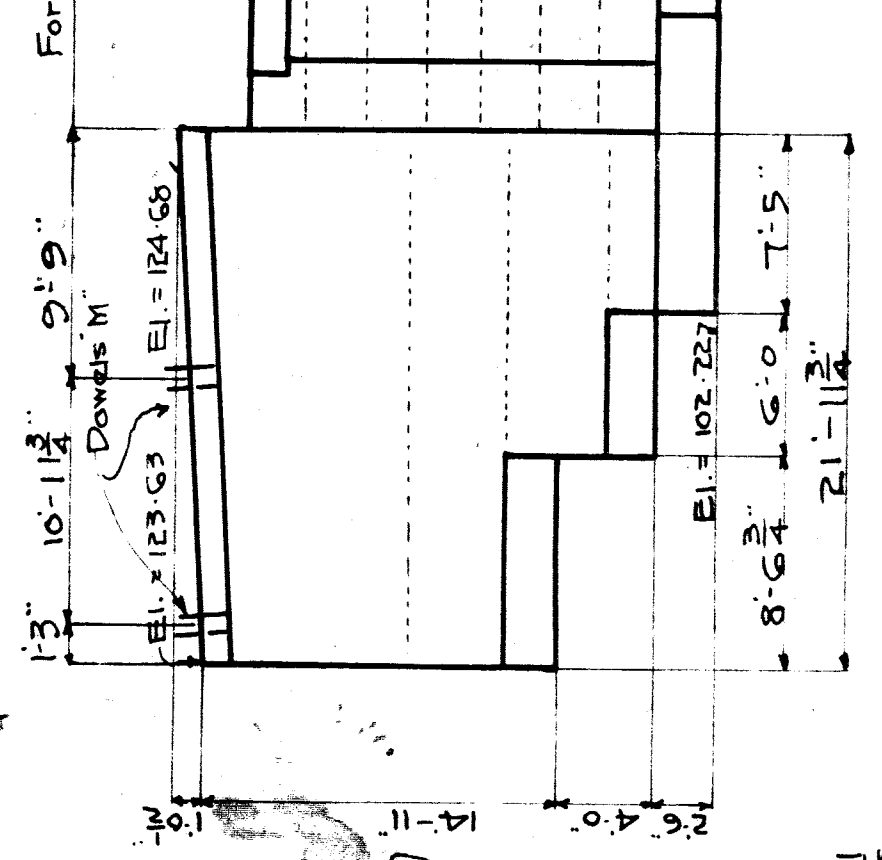
VIEW-MM



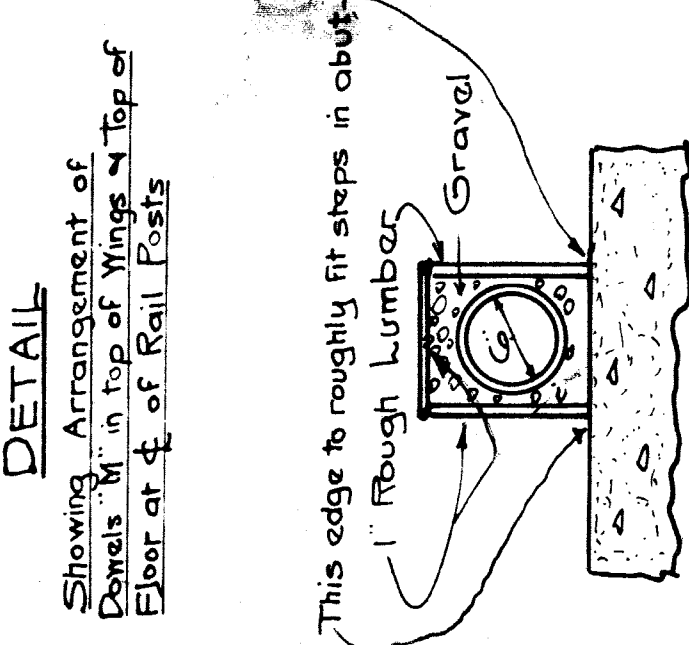
VIEW-LL



VIEW-NN



VIEW-OO



DETAIL showing Support for Vertical Drainage at Back of Abutments

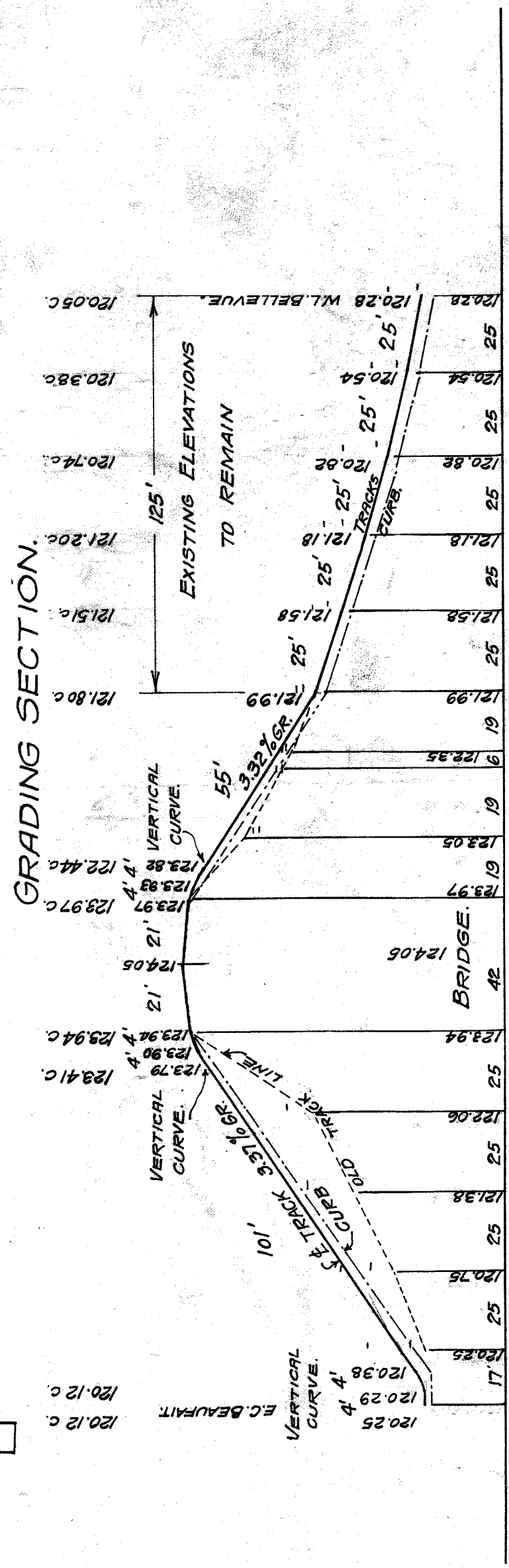
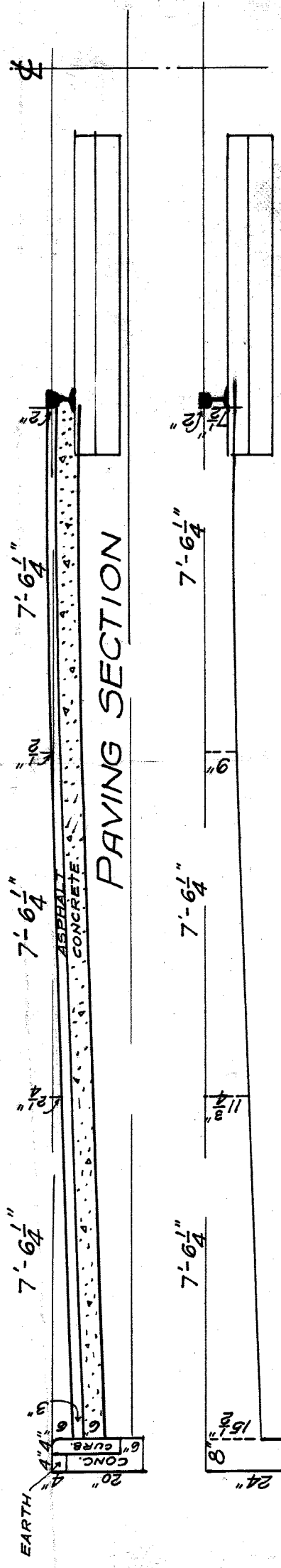
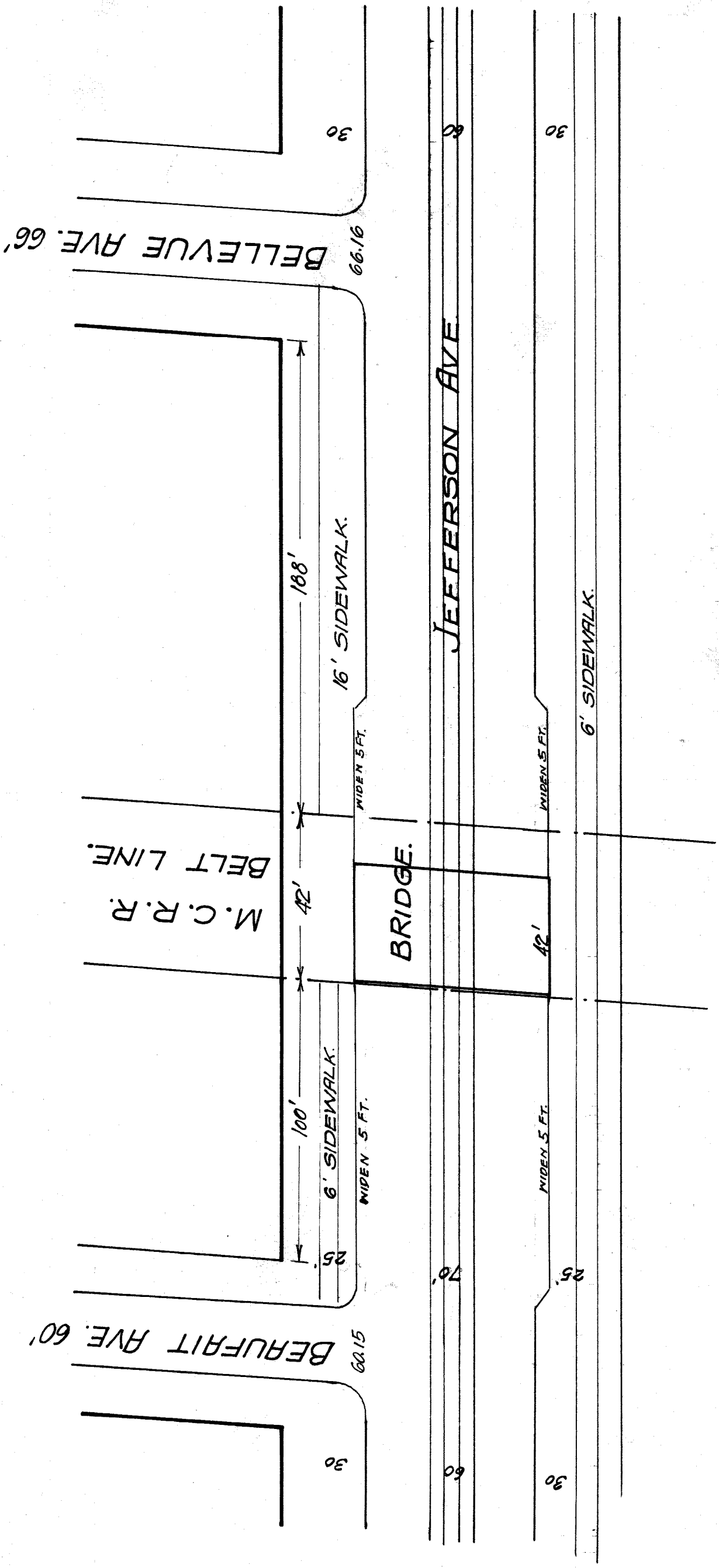
NO. SIZE LENGTH MARK LOCATION

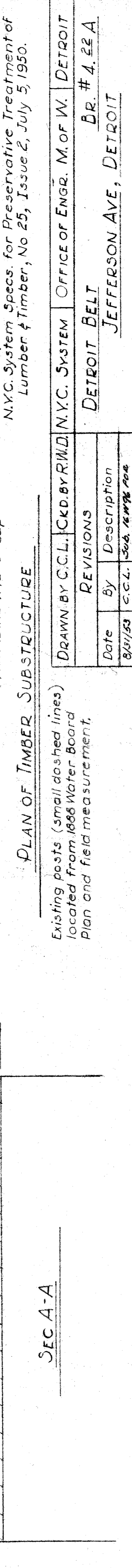
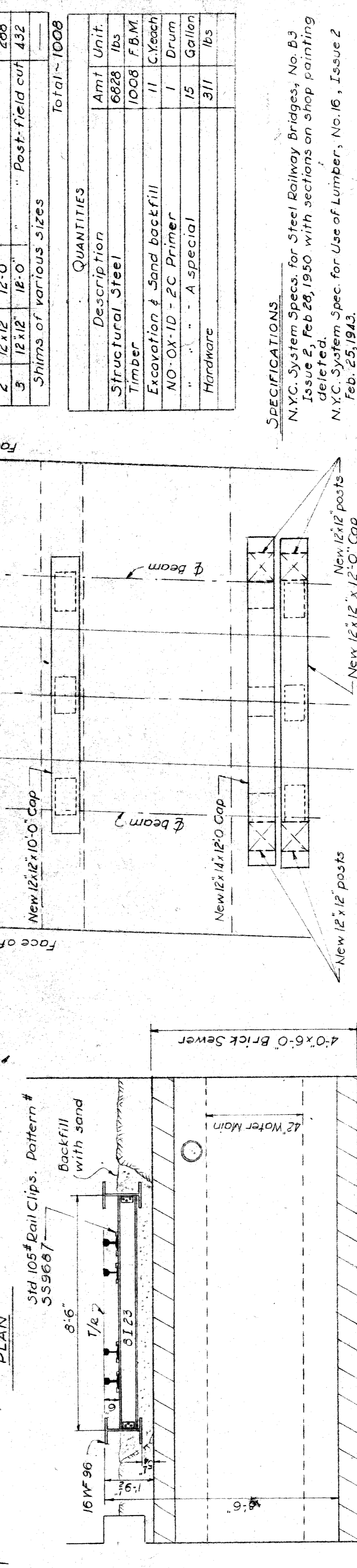
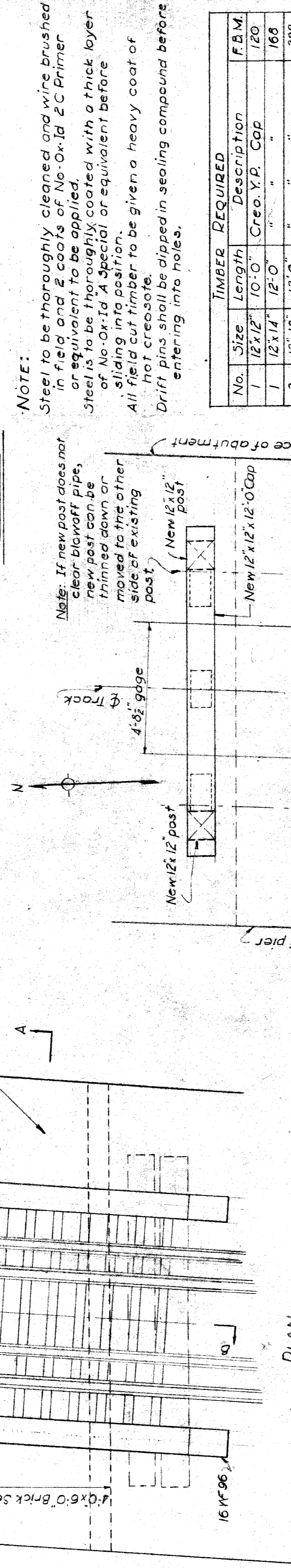
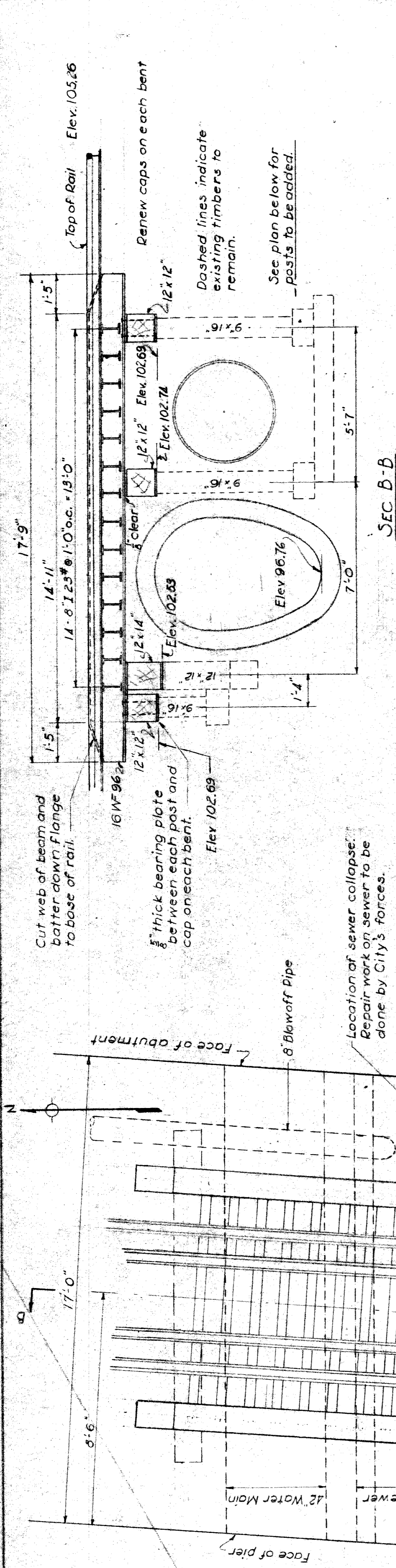
150	3/4"	8'-9"	A	X Wise Abut. Footing
50	1"	17'-0"	A	Lengthwise
20	1"	27'-6"	A	
50	3/4"	7'-6"	B	X Wise Abut Foot Exten.
50	3/4"	11'-9"	B	Length
408	3/4"	5'-0"	C	Dowels in Abut. Pier Wings
250	3/4"	5'-0"	D	Anchoring Reinment to Abut.
405	3/4"	6'-6"	E	to Abuts Pier
83	3/4"	5'-6"	F	X Wise Pier Footing
18	1"	19'-0"	F	Lengthwise
15	3/4"	27'-6"	F	X Wise Pier Exten.
15	3/4"	3'-6"	G	X Wise Pier Exten.
24	3/4"	7'-6"	G	Lengthwise
305	3/4"	14'-0"	J	Dowels in Abut Wing
80	3/4"	29'-0"	K	Pier Verticals
162	3/4"	6'-0"	L	Anchoring Bearing Beams
52	3/4"	2'-0"	M	Wings to Railing
80	3/4"	8'-0"	N	Anchoring Walk to Abut.
5	1"	28'-0"	H	Stack in Pier

NO. SIZE LENGTH MARK LOCATION

M.C.R.R.-DIV.-DETROIT BELT
BRIDGE JEFFERSON AVE. E.O.H.
PIER & ABUTMENTS

Scale: 1/4" = 1'-0"
Bridge Engineer: J. M. ...
Checked by: J. M. ...
Chief Engineer: J. M. ...
Revised: J. M. ...
Sheet 2 of 2





NOTE:
Steel to be thoroughly cleaned and wire brushed in field and 2 coats of No-Ox-Id 2C Primer or equivalent to be applied. Steel is to be thoroughly coated with a thick layer of No-Ox-Id A special or equivalent before sliding into position.
All field cut timber to be given a heavy coat of hot creosote.
Drift pins shall be dipped in sealing compound before entering into holes.

TIMBER REQUIRED			
No.	Size	Description	F.B.M.
1	12x12	10'-0" Creo. Y.P. Cap	120
1	12x14	" " "	166
2	12x12	12'-0" " " "	208
3	12x12	12'-0" " " Post-field cut	432
Shims of various sizes			Total ~ 1008

QUANTITIES		
Description	Amt	Unit
Structural Steel	6828	lbs
Timber	1008	F.B.M.
Excavation & Sand backfill	11	C.Yeach
NO-OX-ID - 2C Primer	1	Drum
" " " A special	15	Gallon
Hardware	311	lbs

SPECIFICATIONS
N.Y.C. System Specs. for Steel Railway Bridges, No. B3 Issue 2, Feb 28, 1950 with sections on shop painting deleted.
N.Y.C. System Spec. for Use of Lumber, No. 16, Issue 2 Feb. 25, 1943.
N.Y.C. System Specs. for Preservative Treatment of Lumber & Timber, No 25, Issue 2, July 5, 1950.

PLAN OF TIMBER SUBSTRUCTURE
Existing posts (small dashed lines) located from 1886 Water Board Plan and field measurement.

DRAWN BY C.C.L. CKD. BY R.W.D. OFFICE OF ENGR. M. OF W. DETROIT

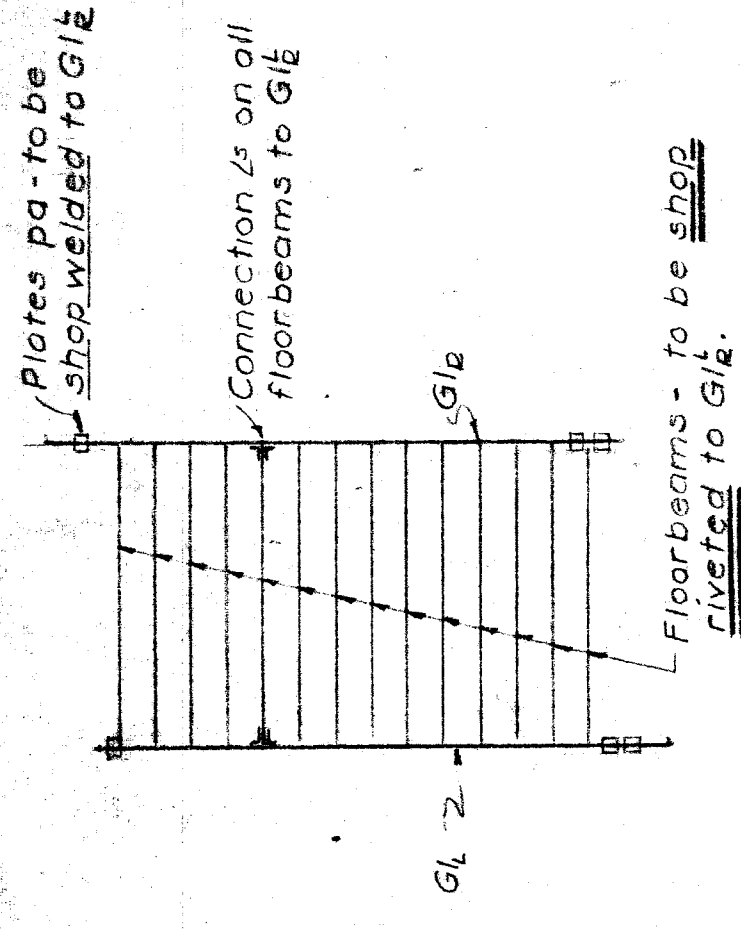
REVISIONS

Date	By	Description
8/11/53	C.C.L.	Sub. 16 WF 96 for CHANGING BEAMS. CHANGE ELEVATIONS

DETROIT BELT BR. # 4. 22 A
JEFFERSON AVE, DETROIT

TRACK SUPPORT FOR SEWER AND WATER MAIN

M.C. DISTRICT DETROIT DIVISION SHEET 1 OF 3
APRIL 10, 1953 SCALE 3/4" = 1'-0" PLAN # 718



FABRICATION DIAGRAM

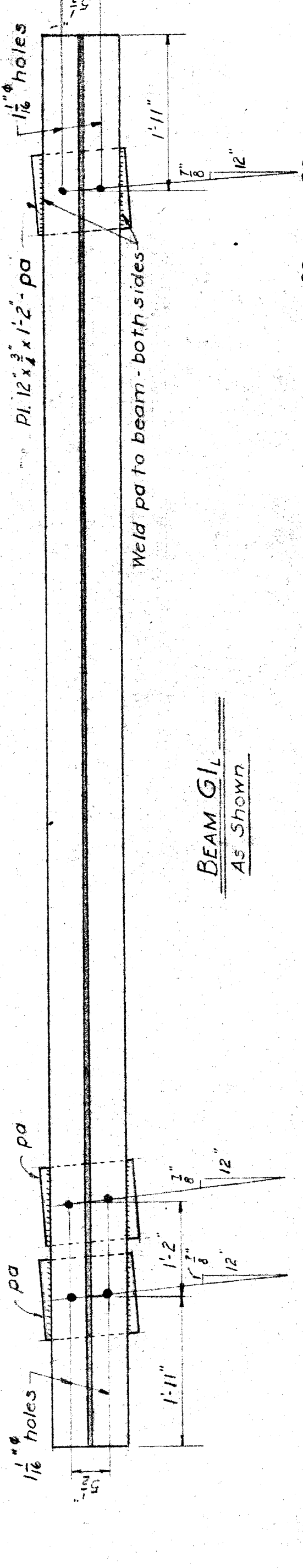
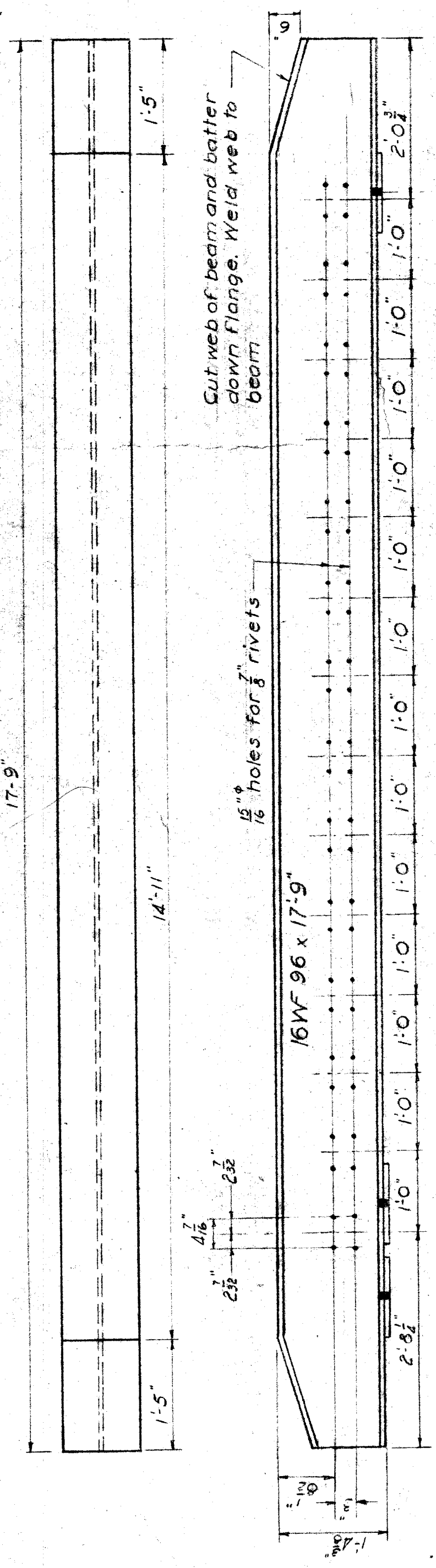
STRUCTURAL STEEL REQUIRED		
No.	Description	Weight
2	16" WF 88# - G1L & G12	3330
14	8" I 23# - Floorbeam	2710
56	L-6" x 3 1/2" x 3/8" x 0'6" Connection L	328
4	Pl. 12" x 3/8" x 1'-2" - Bearing Pl.	118
9	Pl. 12" x 3/8" x 1'-6" - " "	342
		Total - 6828#

NOTE:

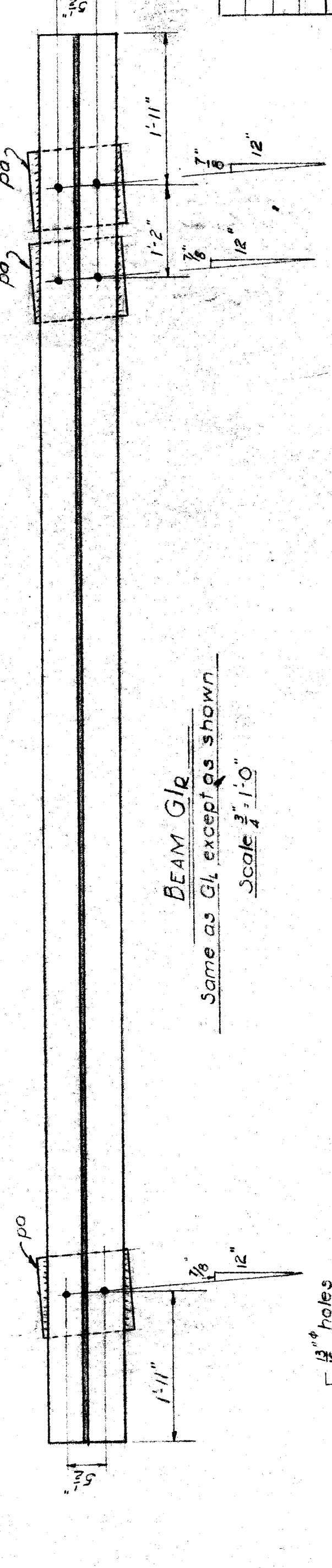
Steel is to be thoroughly cleaned before leaving shop. Steel is NOT to be shop painted. Railroad to furnish pattern for 105# Std. Rail Clip. All shop rivets 3/8".

STEEL TO BE COMPLETELY ASSEMBLED AND SHOP RIVETED. IT IS TO BE PLACED ON A FLAT CAR FOR SHIPMENT.

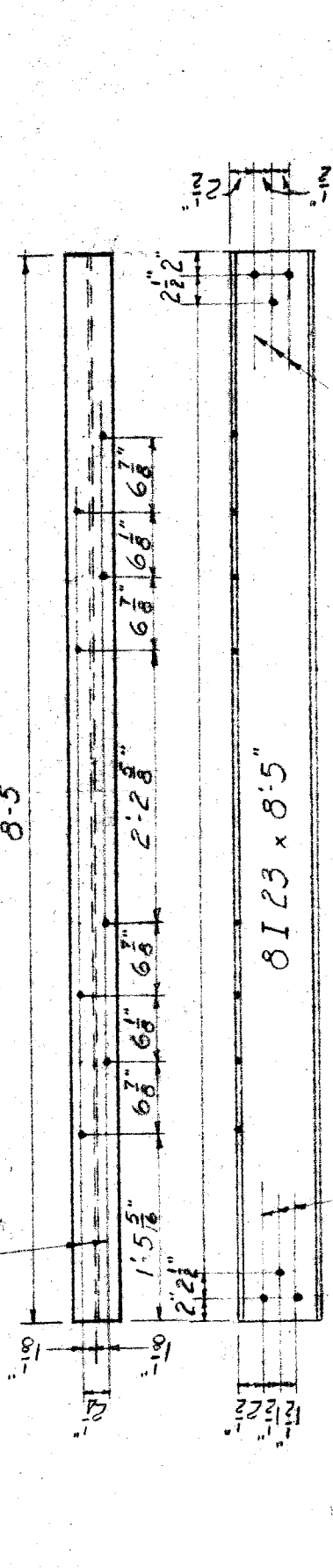
HARDWARE REQUIRED		
No.	Description	Weight
25	3/4" x 2'-0" Drift Pins - Cap to Post	75
15	3/4" x 10" B.H. Drift Pins - Beam to Cap	19
112	Std 105# Rail Clip as per N.Y.C. Pattern #559687	217#
		Total 311#



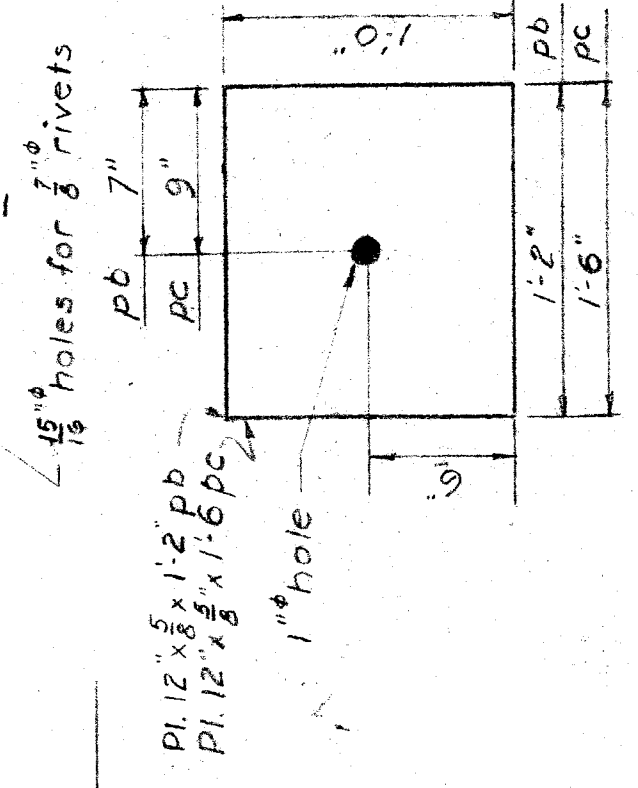
BEAM G1L
As Shown



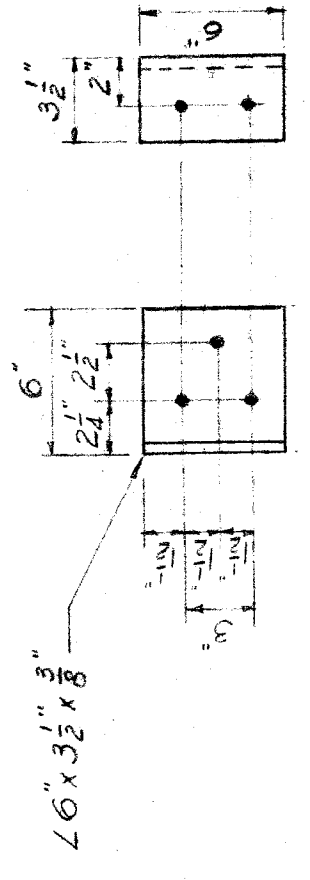
BEAM G12
Same as G1, except as shown
Scale 3/4" = 1'-0"



FLOORBEAM
Scale 3/4" = 1'-0"



BEARING PLATES
To be used between timber posts & caps

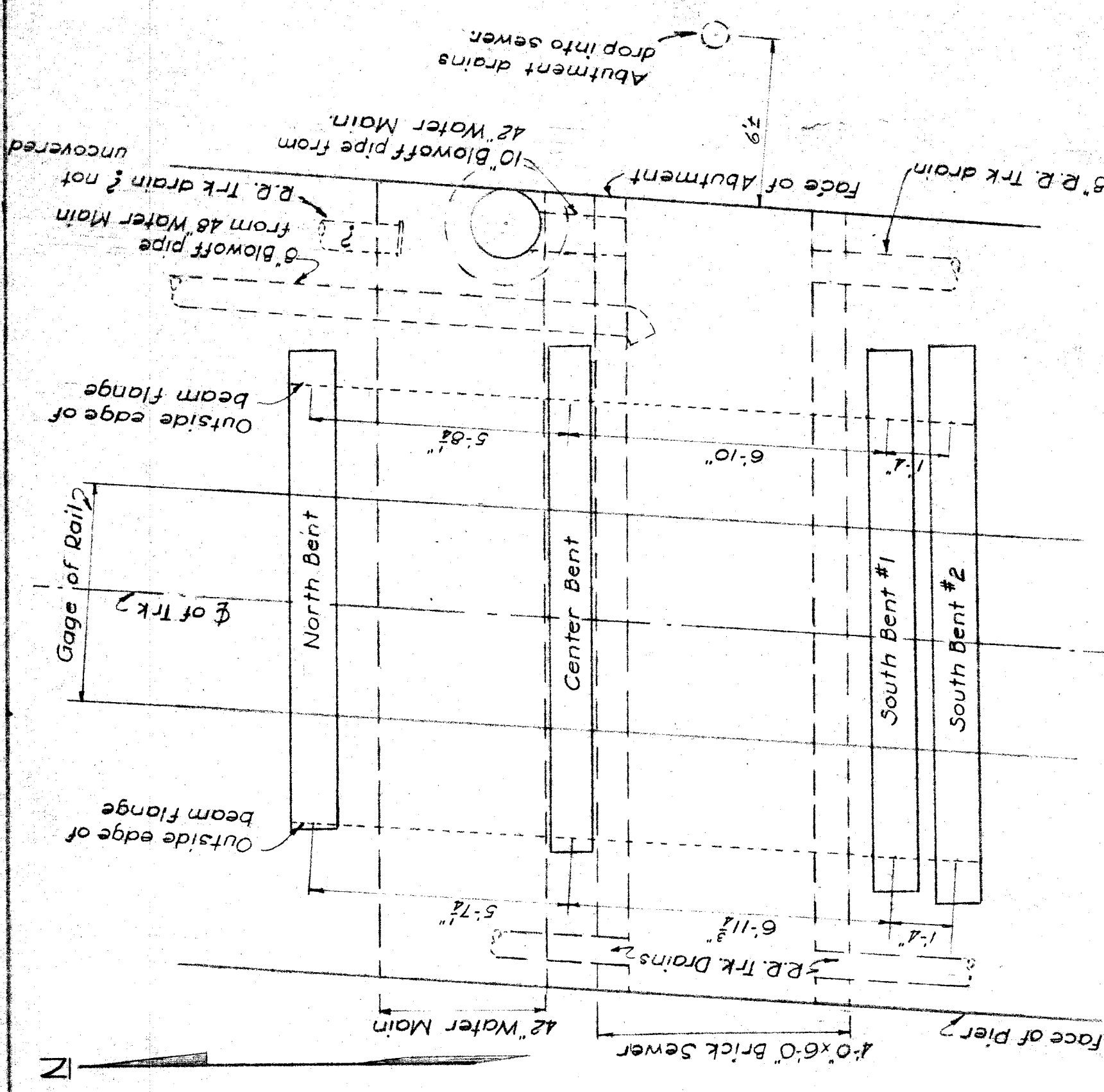


CONNECTION ANGLE
Scale 1/2" = 1'-0"

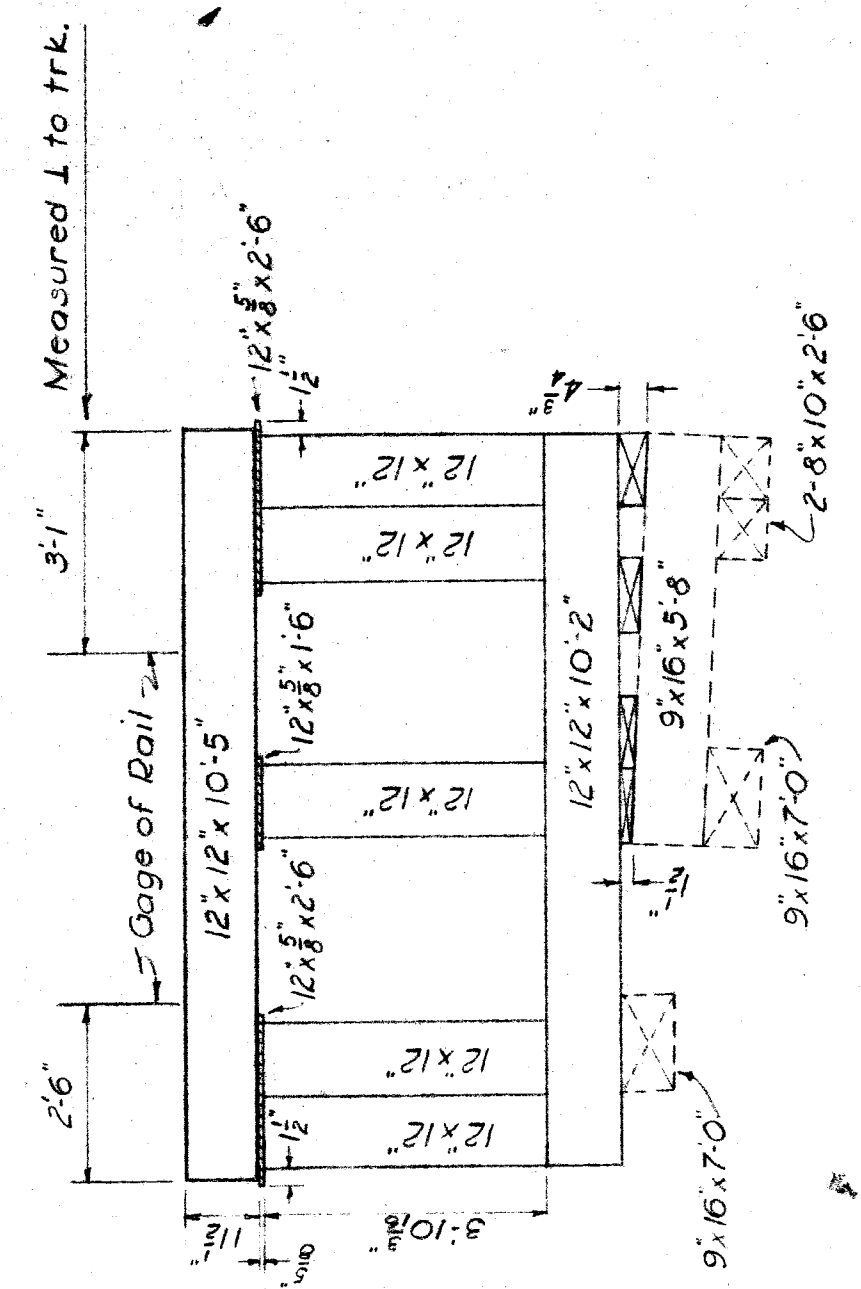
DRAWN BY: C.C.L. CKD.R.W.D.		N.Y.C. SYSTEM OFFICE OF ENGR. M. OF W.		DETROIT
REVISIONS		DETROIT BELT		BR # 4.22 A
Date	By	Description	OVER JEFFERSON AVENUE	
8/31/53	C.C.L.	Change G1/2 to 16WF 96	TRACK SUPPORT FOR SEWER & WATER MAIN	

M.C. DISTRICT	DETROIT DIVISION	SHEET 2 OF 3
APRIL 10, 1953	SCALE: AS SHOWN	PLAN # 722

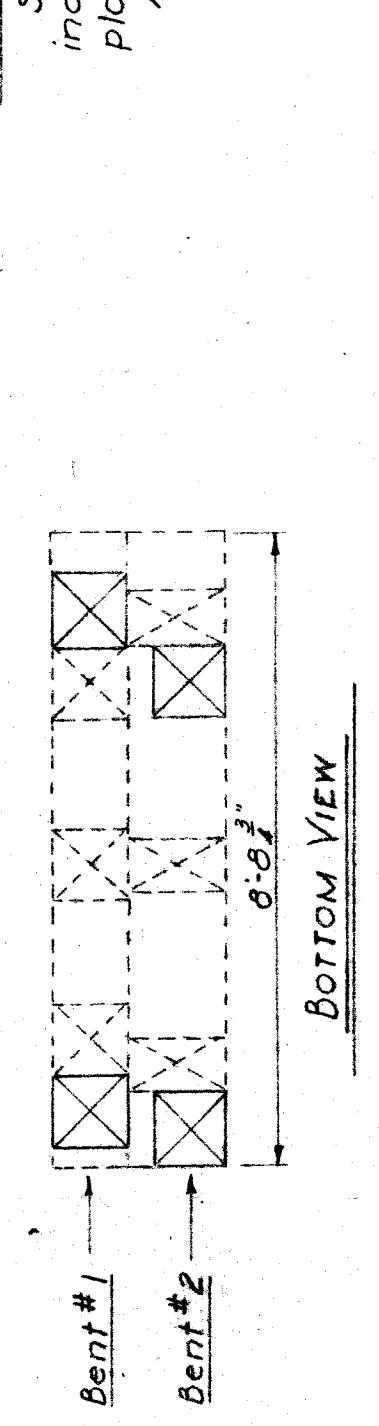
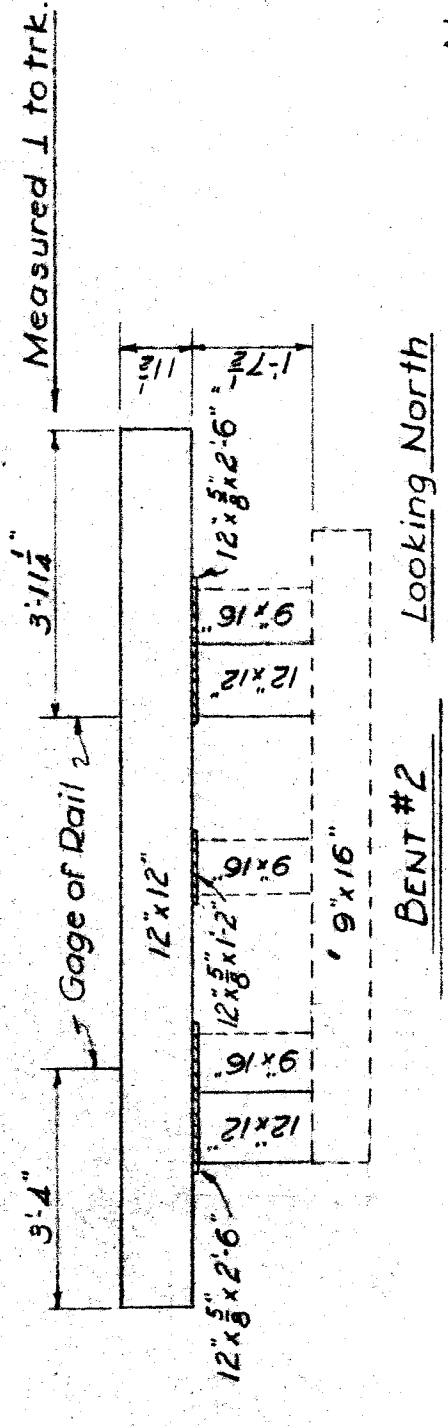
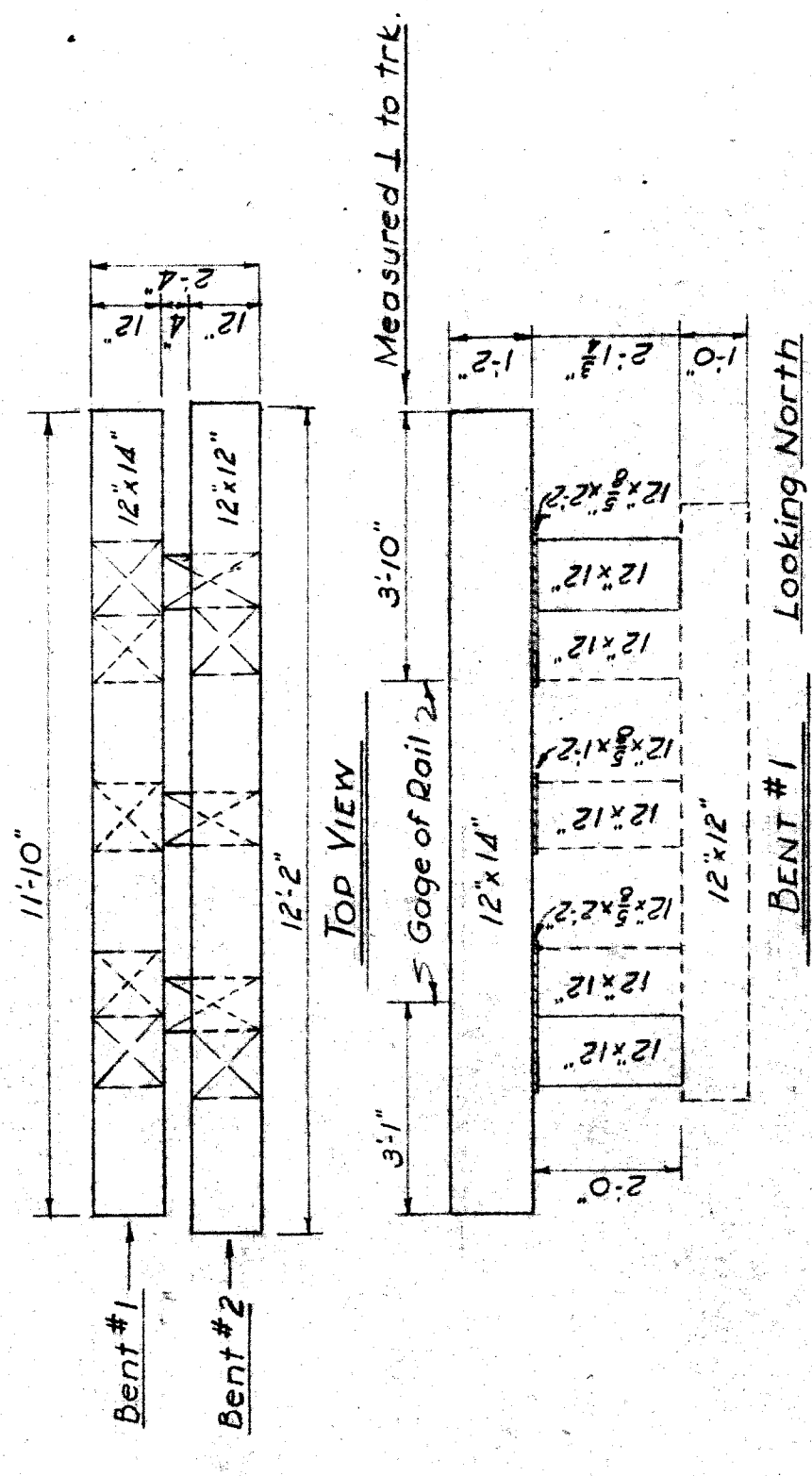
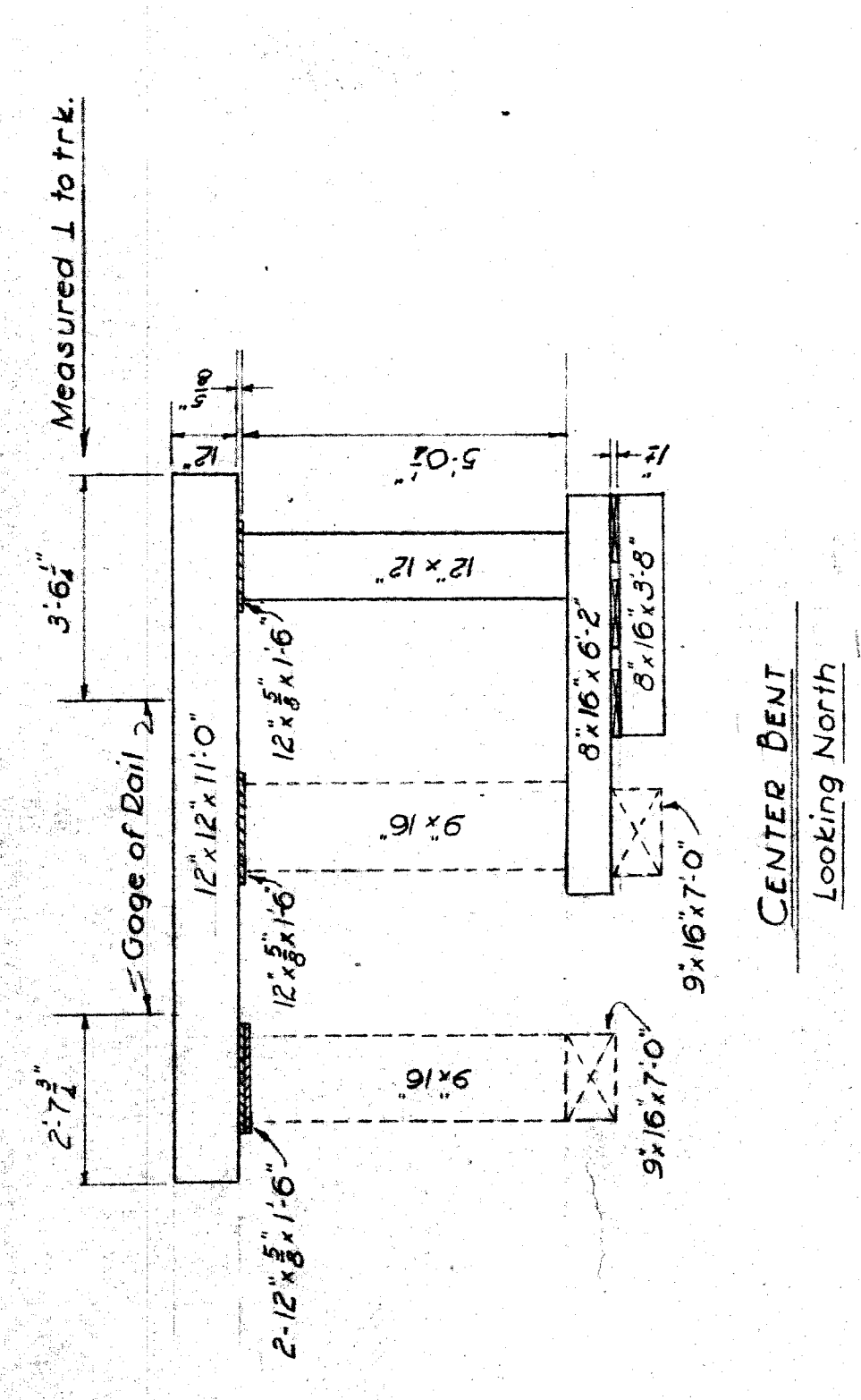
File X098-7



PLAN
Showing Location of Timber Bents



CROSS SECTION - NORTH BENT
Looking North



NOTE
Short dashed lines thus ---
indicate existing timber left in
place.
All timber creosoted.

DRAWN BY C.C.L. MEASURED F.F.W.		N.Y.C. SYSTEM		OFFICE OF ENGR. M. OF W.		DETROIT	
REVISIONS		DETROIT BELT		BR # 4.22 A		SHEET 3 OF 3	
Date By Description		JEFFERSON AVE., DETROIT		SCALE - 3/8" = 1'-0"		PLAN # 736	
		TIMBER SUBSTRUCTURE AS BUILT		M.C. DISTRICT		DETROIT DIVISION	
				SEPT 14, 1953		FILE X098-B	