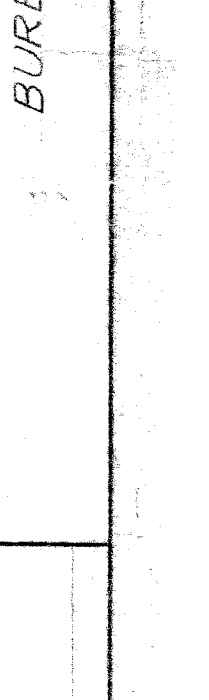
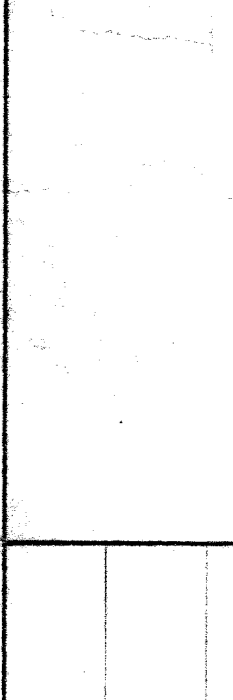
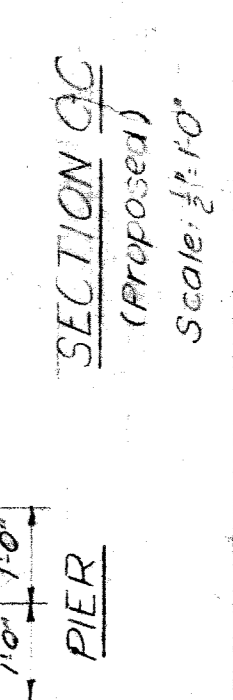
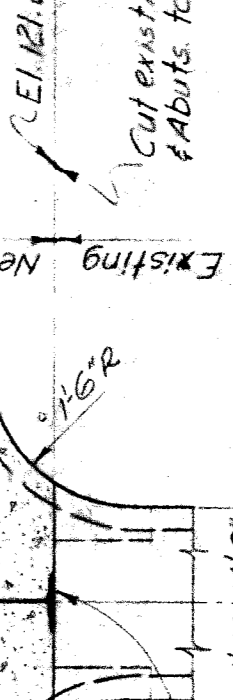
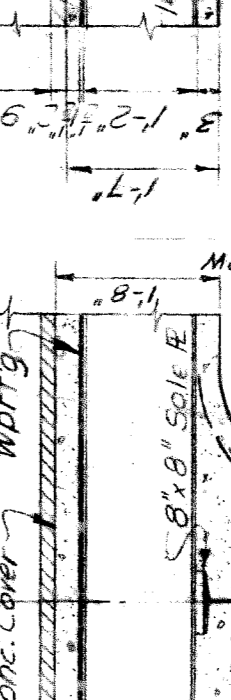
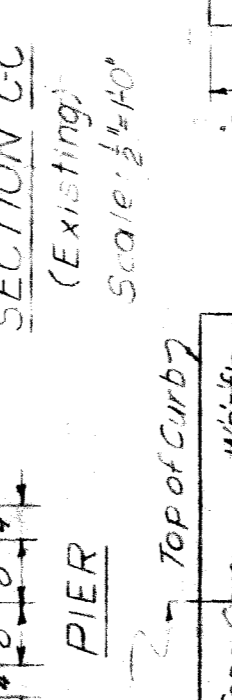
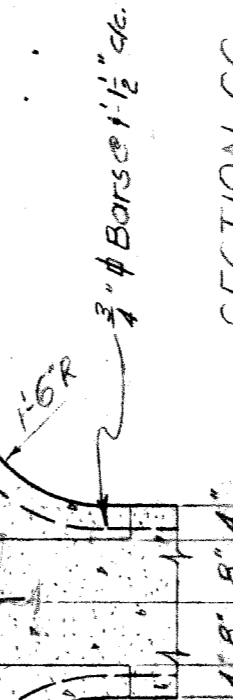
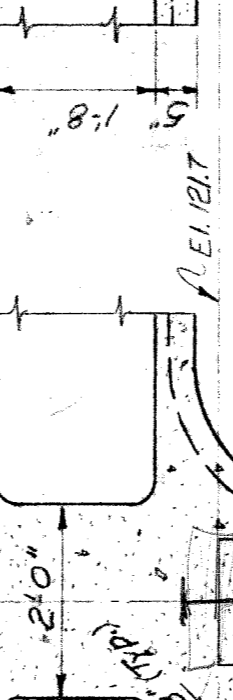
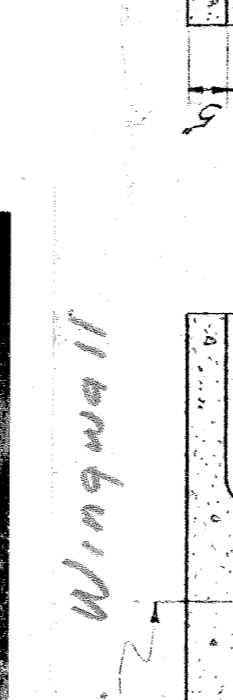
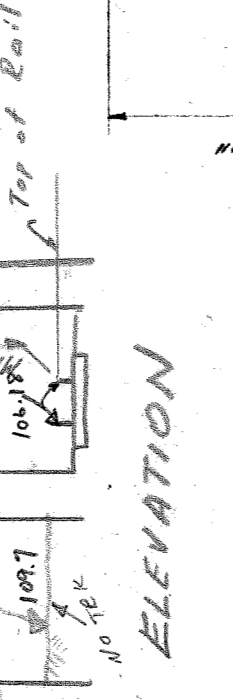
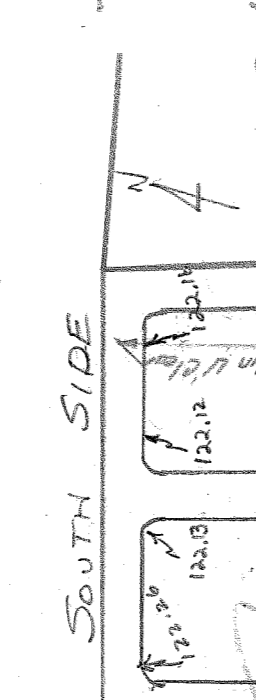
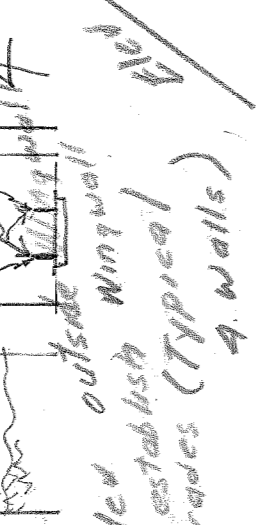
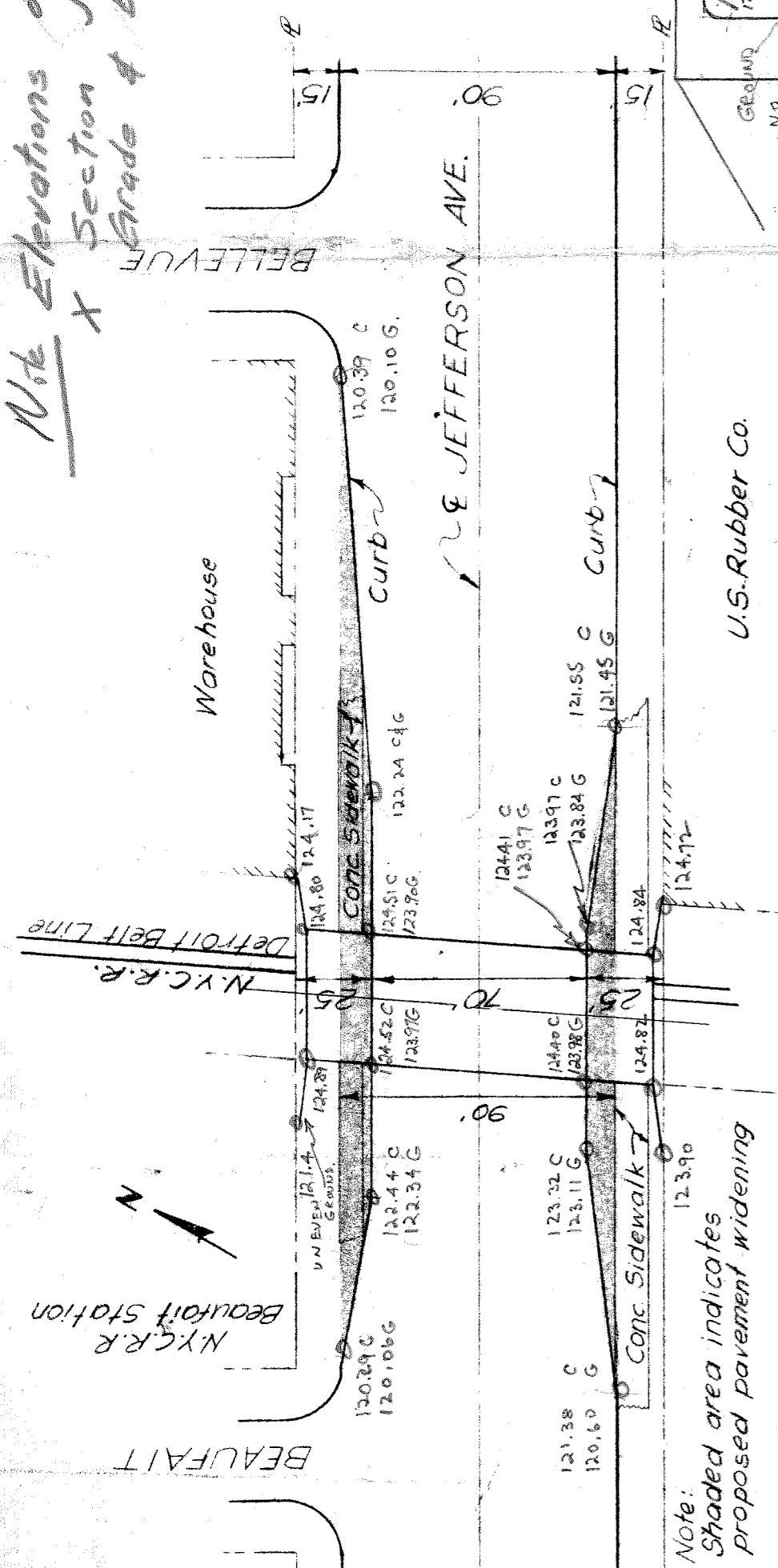
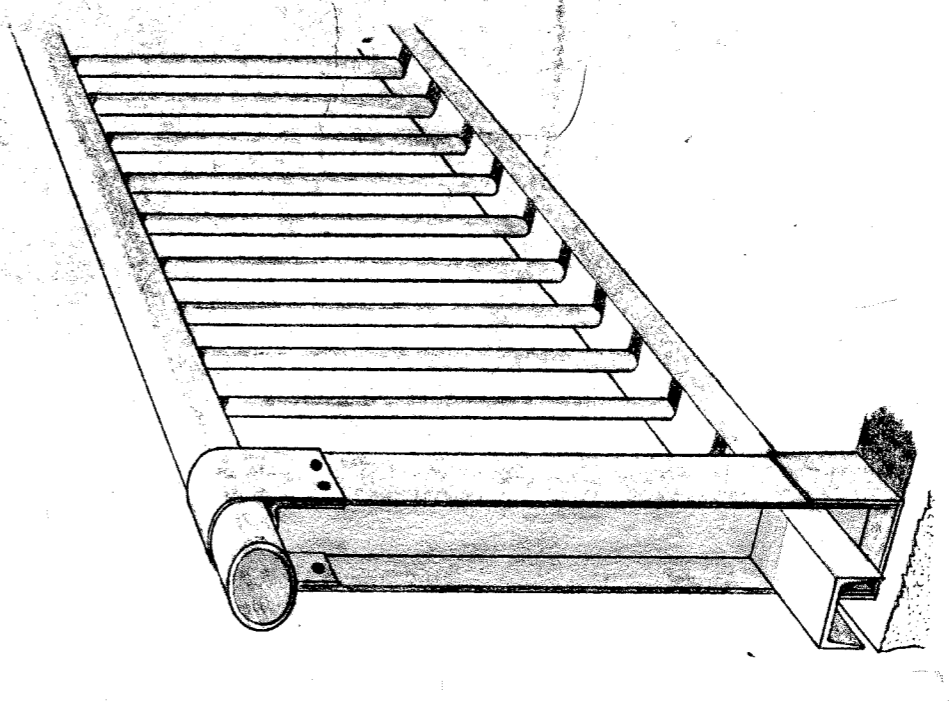


With Elevations on Jefferson where shown
 X Section Jefferson to establish Jefferson
 Grade & Bridge Profile



Utilities in Existing Conduit
 North Side
 1-8" Gas Main
 10-High Voltage Edison Cables
 in 12-duct line.
 South Side
 2-16" Gas Main
 F.L.C., Police Dept. and Fire Dept.
 cables in 9-duct line.
 Additional Proposed Utilities
 North Side
 1-16" Gas Main

Note: Dimensions marked thus: * are for sections of abutments. For dimensions of section at pier, add 1'

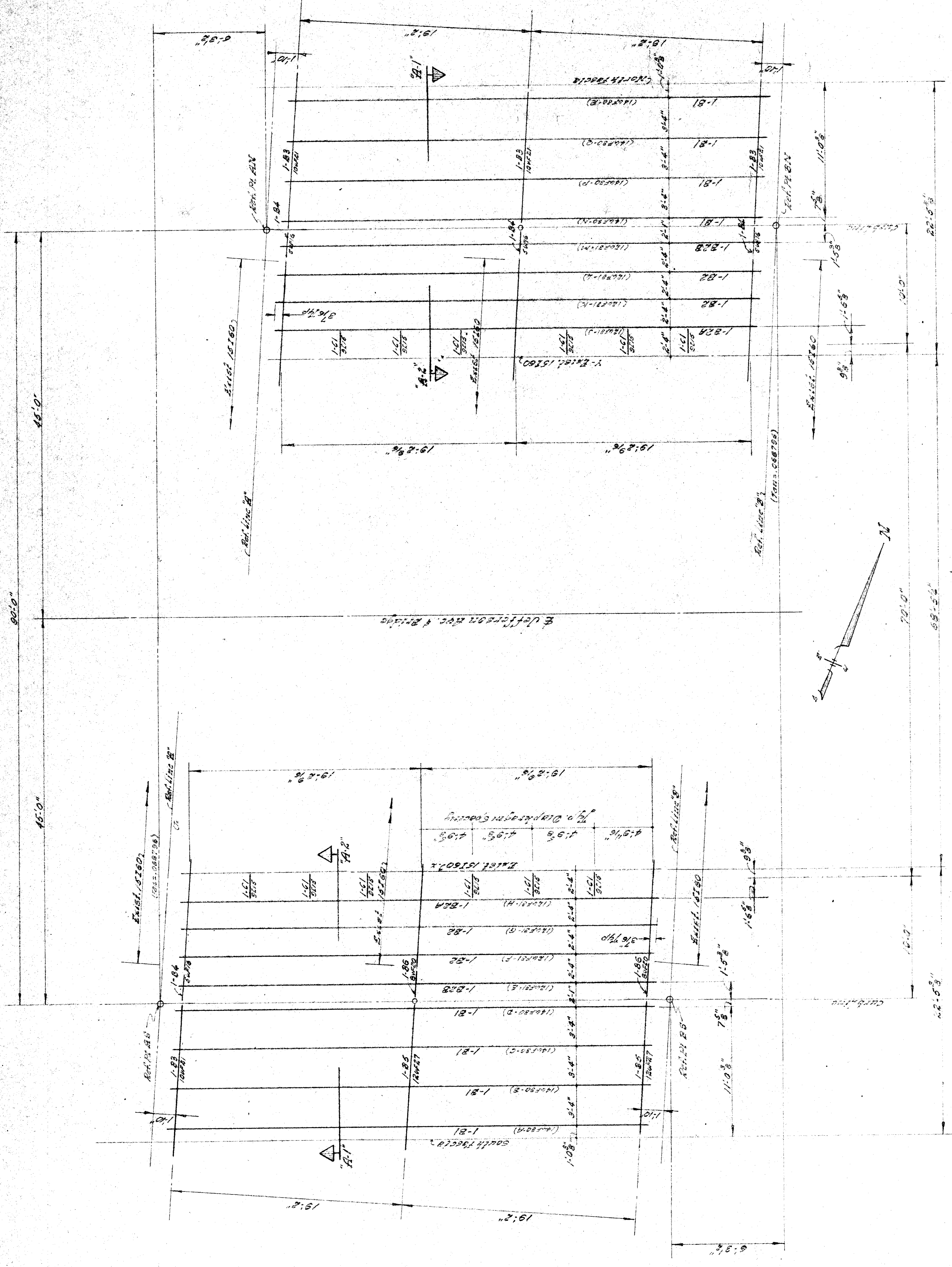


BRIDGE MAINTENANCE
 JEFFERSON AVE. BRIDGE
 CROSSING N.Y.C.R.R. DETROIT BELT-LINE
 BRIDGE PAVEMENT WIDENING

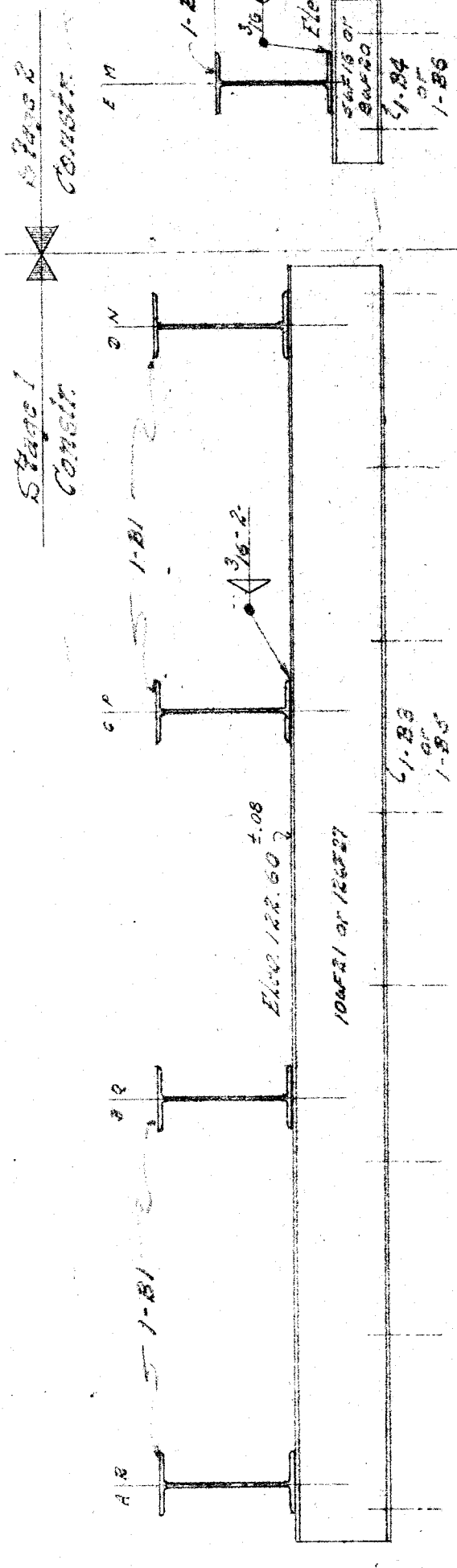
City Engineer's Order No. 392
 Sheet 1 of 1 Sheets
 JOB No. M-10-98
 DRWG No. C-101
 Date: Dec., 1957

CITY OF DETROIT
 DEPARTMENT OF PUBLIC WORKS
 CITY ENGINEERS OFFICE
 BUREAU OF HIGHWAYS & EXPRESSWAYS

Designed By: Sturm
 Drawn By: Sturm
 Traced By: Sturm
 Checked By: R. Johnson



Structuring Error
Scale 1/8" = 1'-0"



SECTION A-A
4'-0"

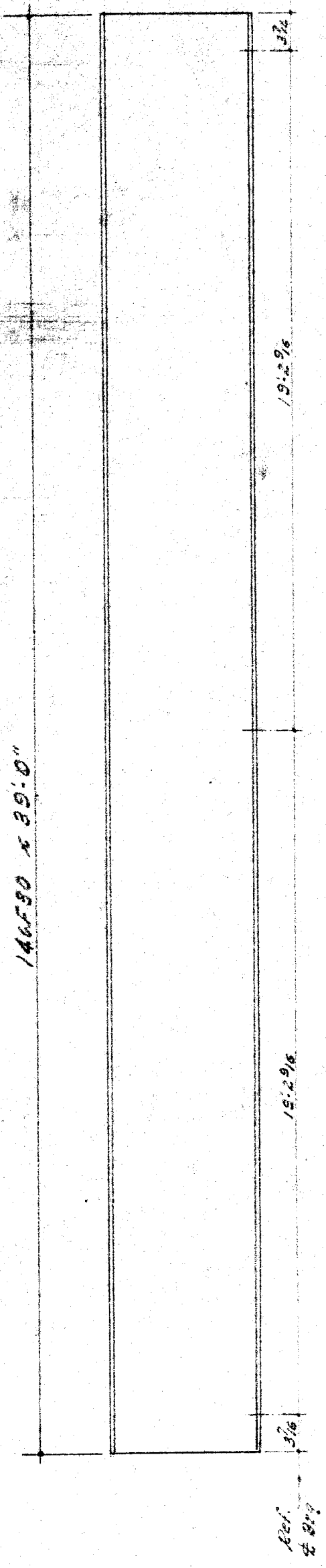
SECTION B-B
4'-0"

Note:
All Bridge End Elevations
Shown To Be Correct In Field

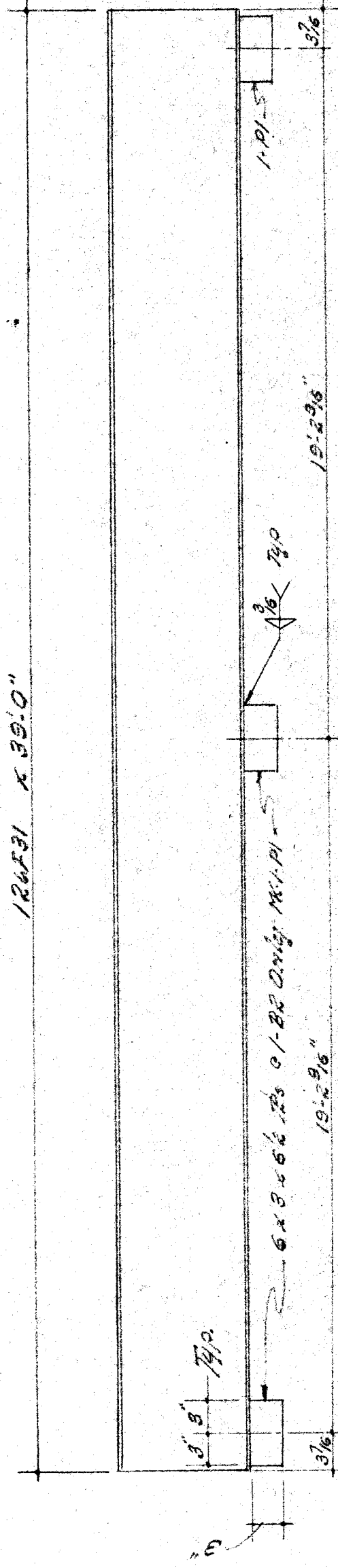
OFFICE COPY
CHECKED BY
D J R & W A L
4/20/69

CITY OF DETROIT
DEPARTMENT OF PUBLIC WORKS
CITY ENGINEERS OFFICE
BUREAU OF HIGHWAYS AND EXPRESSWAYS
APPROVED
BY J. J. Covert DATE APR 22 1969

Rev. I. 4-19-69 - 14427 (1-80) & 4-20-69 (1-80) REVISED
TAYLOR CITY BUILDING & STEEL CO.
20070
PHONE EASTVILLE, MICH. COLLAMANN
1-800-800-8000
Jefferson Ave Bridge
Roadway Planning
Department/White Clerk
Detroit, Michigan
Alice Greer & Son

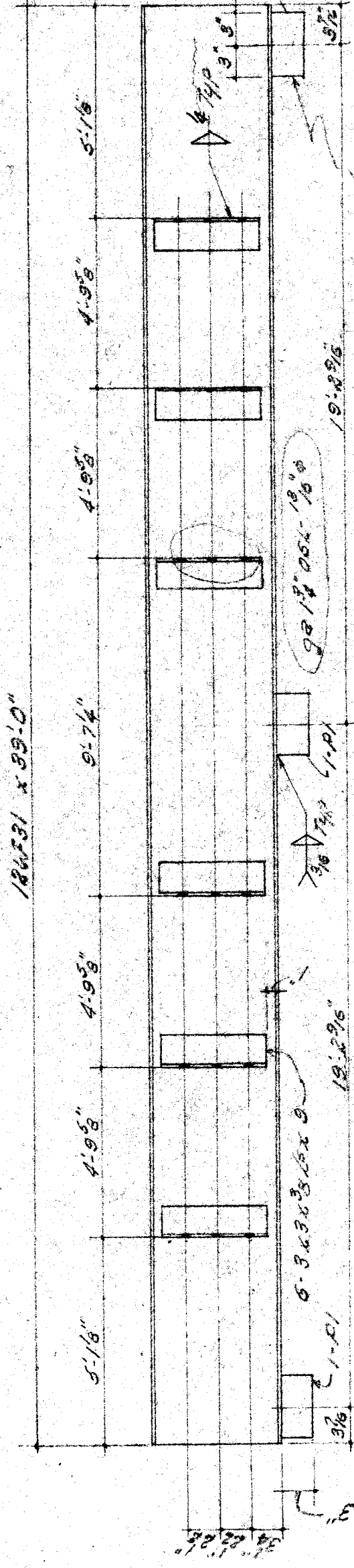


5. Rep'd. PK. 1-B1



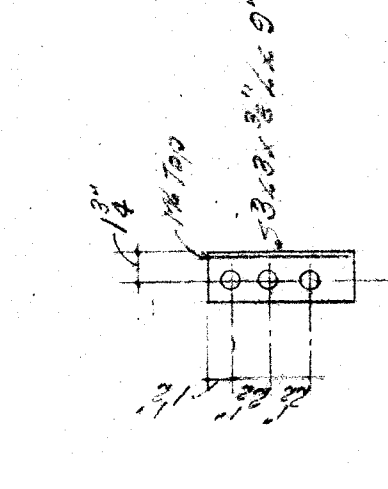
Shop Note!
Do not Advertise these items
Pending City Eng. Approval

4. Rep'd. PK. 1-B2
2. Rep'd. PK. 1-B2B

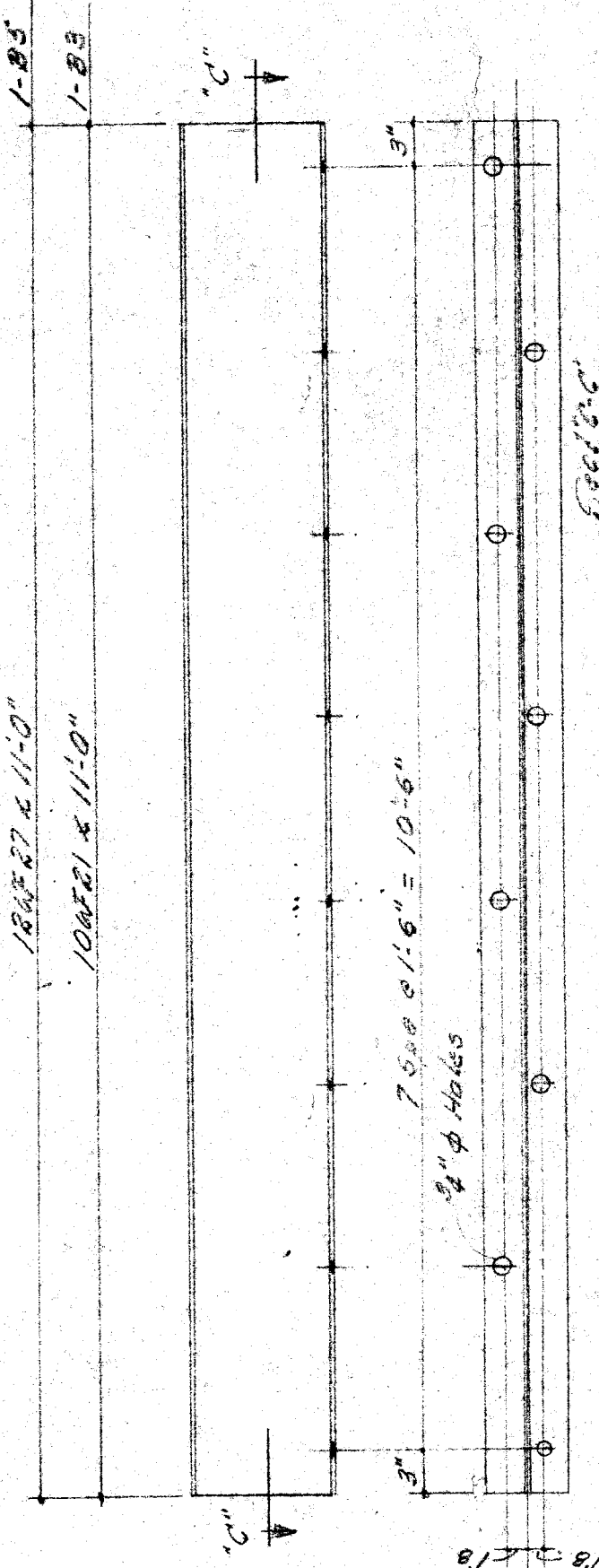


Shop Note!
Do not Advertise these items
Pending City Eng. Approval

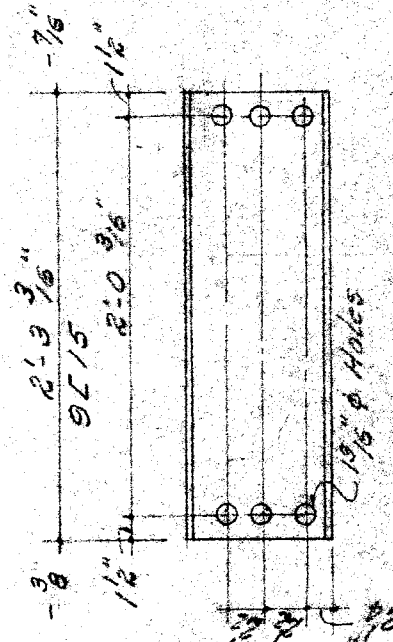
2. Rep'd. PK. 1-B2A



1/2. Rep'd. PK. 1-A1
(Circle 10/11 to 10/10)

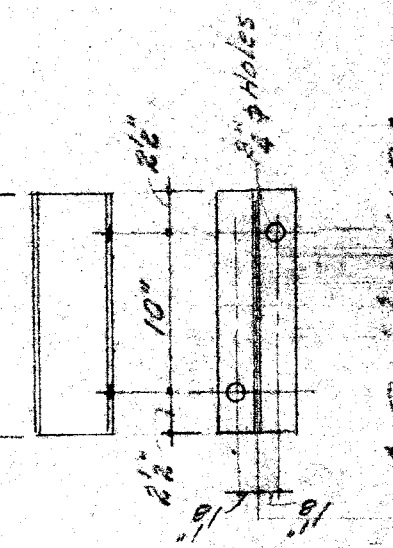


4. Rep'd. PK. 1-B3
2. Rep'd. PK. 1-B5



1/2. Rep'd. PK. 1-C1

5. Rep'd. PK. 1-B4
2. Rep'd. PK. 1-B6



4. Rep'd. PK. 1-B8
2. Rep'd. PK. 1-B6

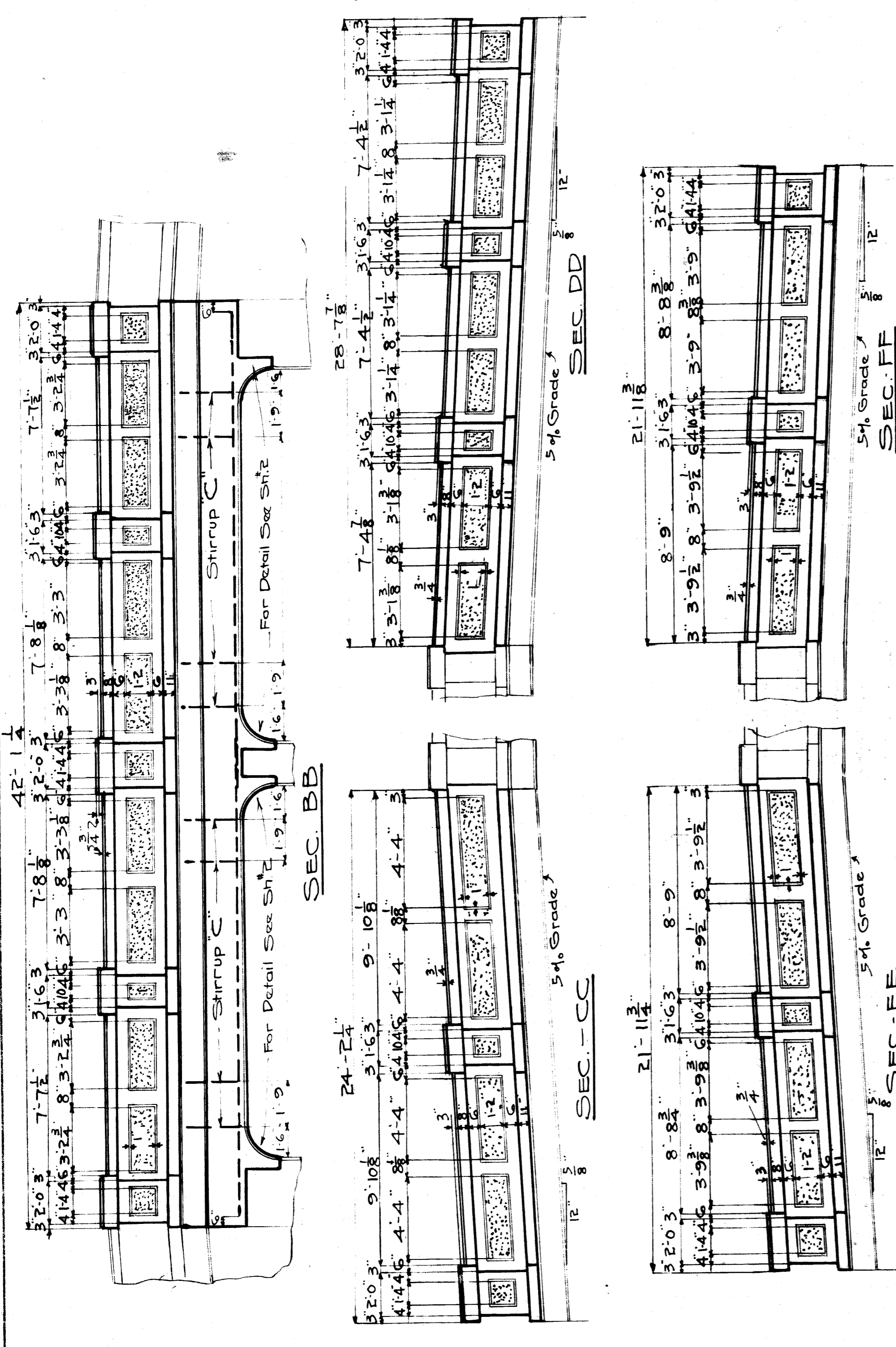
CITY OF DETROIT
DEPARTMENT OF PUBLIC WORKS
CITY ENGINEERS OFFICE
BUREAU OF HIGHWAYS AND EXPRESSWAYS

APPROVED

BY: J. J. Covert DATE: APR 22 1969

| | | | | |
|----------|-------------|----------|---------|-----------|
| DRAWN BY | APPROVED BY | REVISION | JOB NO. | SHEET NO. |
| 2/25/69 | 2/25/69 | | 59103 | 1 OF 2 |
| DATE | DATE | DATE | | |

X 0 9 8



BILL OF REINFORCING

| NO. | SIZE | LENGTH | MARK | LOCATION |
|-----|--------|--------|------|--------------------------|
| G4 | 3/4" | 22'-0" | A | Sidewalk Beams |
| G5 | 1" | 22'-0" | B | |
| G6 | 3/4" | 5'-0" | C | Dowels in Floor at Posts |
| G7 | 3/4" | 5'-0" | D | Top Bars in Top Slab |
| G8 | 3/4" | 3'-0" | E | Top Slab Reinforcing |
| G9 | 1" | 15'-0" | F | Top Slab Reinforcing |
| G10 | 3/4" | 21'-0" | G | Bolt |
| G11 | 3/4" | 7'-6" | H | |
| G12 | 3/4" | 21'-3" | I | Top of Slab - Lengthwise |
| G13 | 3/4" | 25'-6" | J | Roadway Rein. |
| G14 | 3/4" | 23'-0" | K | |
| G15 | 1/2" | 45' | L | Triangular Mesh 30" Wide |
| G16 | 2 1/2" | 2 1/2' | M | Curb h. |
| G17 | 3/4" | 15'-0" | N | Bats for Curb h. |
| G18 | 3/4" | 15'-0" | O | 5'-0" long for Conduit |
| G19 | 3/4" | 15'-0" | P | |

NOTES

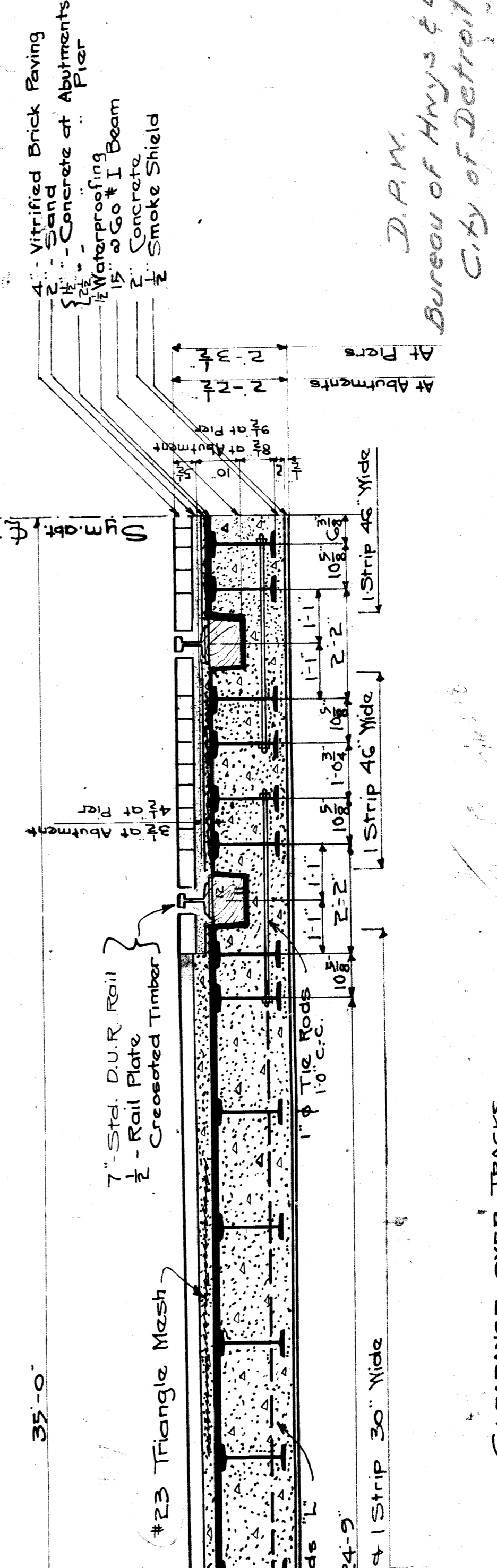
Concrete - { Reiling = 20 cu ft
Reinforcing Bars = 13150 #
Reinforcing Mesh = 2454 #
Waterproofing = 3300 sq ft

Concrete - To be composed of one part Portland cement, two parts sand and four parts crushed stone. Top surfaces to have sidewalk finish. Exposed faces to be rubbed as soon as forms are removed.

Reinforcing - Triangular Mesh shall be lapped 4" & securely wired. Bars shall be securely wired together at each intersection. All splices shall be lap for a length of twenty diameters of the bar and shall be wired together with twenty turns of #16 wire.

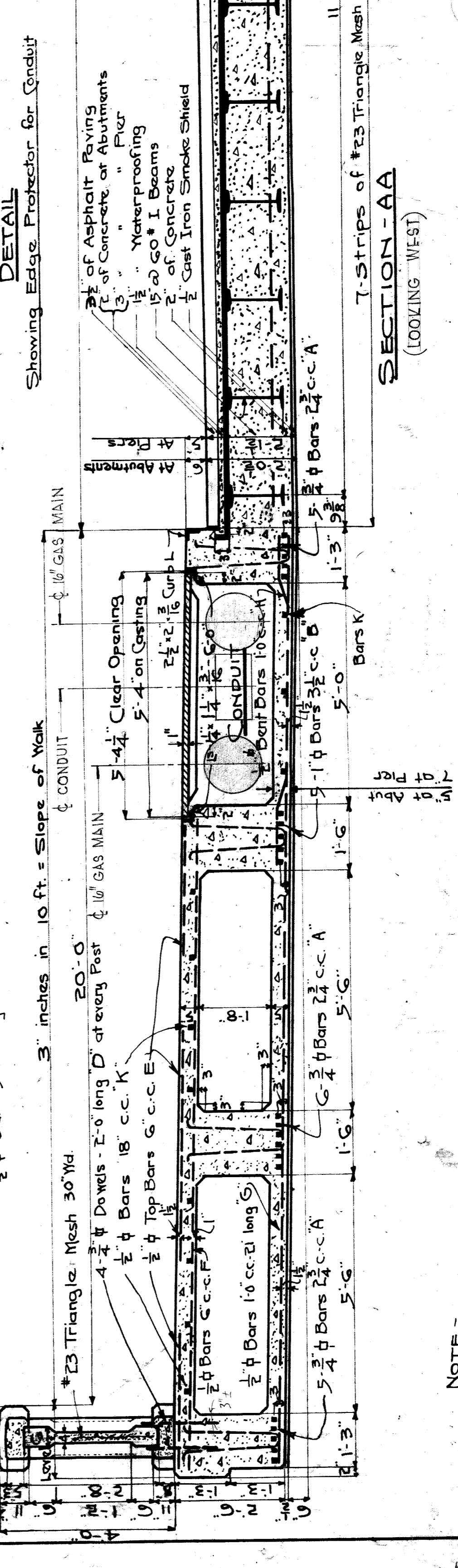
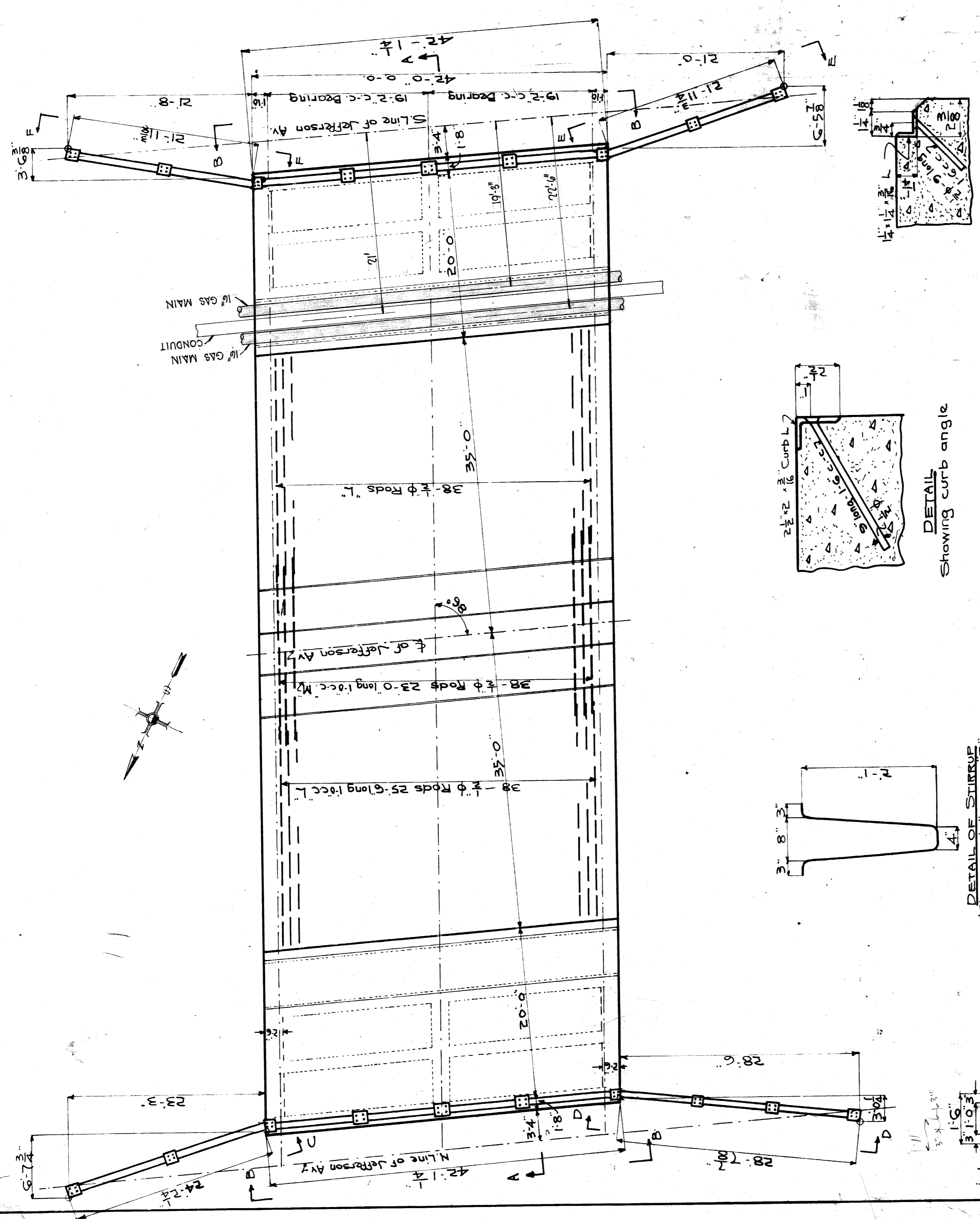
Waterproofing - According to Specifications for Roadway (Separate Contract) Paint inside of Conduit with one coat of Sarco Primer, one coat of Sarco #1.

Railing - Panels in Road Railing to have bush hammered finish. All faces to have 1" gray granite finish.



CLEARANCE OVER TRACKS

The contractor must maintain at all times clearance over the track now in use of fifteen (15) feet above the top of rail and it will be necessary for special provision to carry forms coming under the sidewalk portions, owing to the limited space.



NOTE:

All Boxed Corners of Hand Rail and Coping to be thus -

Approved: _____

M. C. R. R. - DIV. - DETROIT BELT
BRIDGE JEFFERSON AVE. ON
FLOOR & HAND RAIL

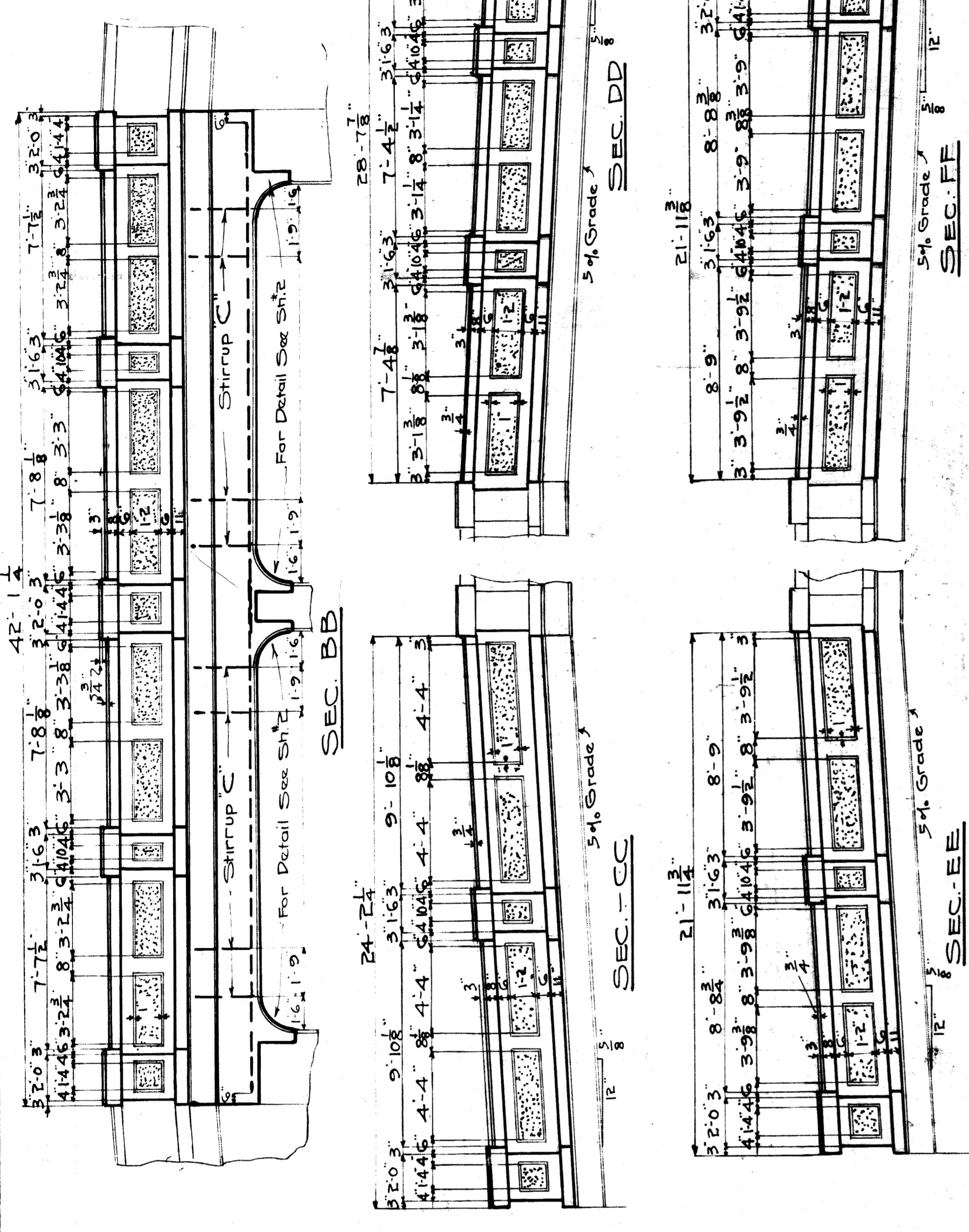
Scale: 1/4" = 1'-0"

Drawn by: J.C.M. July 1916
 Checked by: J.C.M. July 1916
 Chief Engineer, Traced by: J.C.M. July 1916
 Revised: J.C.M. Feb. 1918

D.P.M.
 Bureau of Highways & Expressways
 City of Detroit

Sheet 3 of 4

4.22 Detroit Belt



BILL OF REINFORCING

| NO | SIZE | LENGTH | MARK | LOCATION |
|-----|------|--------|------|------------------------------|
| 64 | 3/4" | 22'-0" | A | Side-walk Beams |
| 65 | 1" | 22'-0" | B | " |
| 66 | 1" | 5'-0" | C | " |
| 67 | 1" | 5'-0" | D | Dowels in Floor at Posts |
| 68 | 1" | 5'-0" | E | Top Bars in Top Slab |
| 69 | 1" | 5'-0" | F | Top Slab Reinforcing |
| 70 | 1" | 15'-0" | G | Bolt |
| 71 | 1" | 21'-0" | H | " |
| 72 | 1" | 21'-0" | I | Top & Bolt Slab - Lengthwise |
| 73 | 1" | 21'-0" | J | Roadway Rein. |
| 74 | 1" | 23'-0" | K | " |
| 75 | 1" | 23'-0" | L | " |
| 76 | 1" | 23'-0" | M | " |
| 77 | 1" | 23'-0" | N | " |
| 78 | 1" | 23'-0" | O | " |
| 79 | 1" | 23'-0" | P | " |
| 80 | 1" | 23'-0" | Q | " |
| 81 | 1" | 23'-0" | R | " |
| 82 | 1" | 23'-0" | S | " |
| 83 | 1" | 23'-0" | T | " |
| 84 | 1" | 23'-0" | U | " |
| 85 | 1" | 23'-0" | V | " |
| 86 | 1" | 23'-0" | W | " |
| 87 | 1" | 23'-0" | X | " |
| 88 | 1" | 23'-0" | Y | " |
| 89 | 1" | 23'-0" | Z | " |
| 90 | 1" | 23'-0" | AA | " |
| 91 | 1" | 23'-0" | AB | " |
| 92 | 1" | 23'-0" | AC | " |
| 93 | 1" | 23'-0" | AD | " |
| 94 | 1" | 23'-0" | AE | " |
| 95 | 1" | 23'-0" | AF | " |
| 96 | 1" | 23'-0" | AG | " |
| 97 | 1" | 23'-0" | AH | " |
| 98 | 1" | 23'-0" | AI | " |
| 99 | 1" | 23'-0" | AJ | " |
| 100 | 1" | 23'-0" | AK | " |

NOTES

Concrete - Concrete Reinforcing Bars - 13/16" # Rebar - 2454 #
Waterproofing Mesh - 2454 #
Waterproofing - 3500 ft.
To be composed of one part Portland cement, two parts sand and four parts crushed stone. Top surfaces to have side-walk finish. Exposed faces to be rubbed as soon as forms are removed.

Reinforcing - Triangle Mesh shall be lapped 4" securely wired. Bars shall be securely wired together at each intersection. At apices they shall lap for a length of twenty diameters of the bar and shall be wired together with twenty turns of #16 wire.

Waterproofing - According to Specifications for Roadway (Separately Contracted).
Paint inside of Conduit with one coat of Sarsco Primer & one coat of Sarsco #1.

Railing - Panels in Hand Railing to have bush hammered finish. All faces to have 1" gray granite finish.

4" Vitrified Brick Paving
1" Sand
1" Concrete at Abutments
Waterproofing
15" 20# I Beams
2" Concrete
2" Smoke Shield

7" Std. D.U.R. Rail
1/2" Rail Plate
1/2" Creosoted Timber

#23 Triangle Mesh

7-Strips of #23 Triangle Mesh 46" Wide x 1/4" Strip 30" Wide

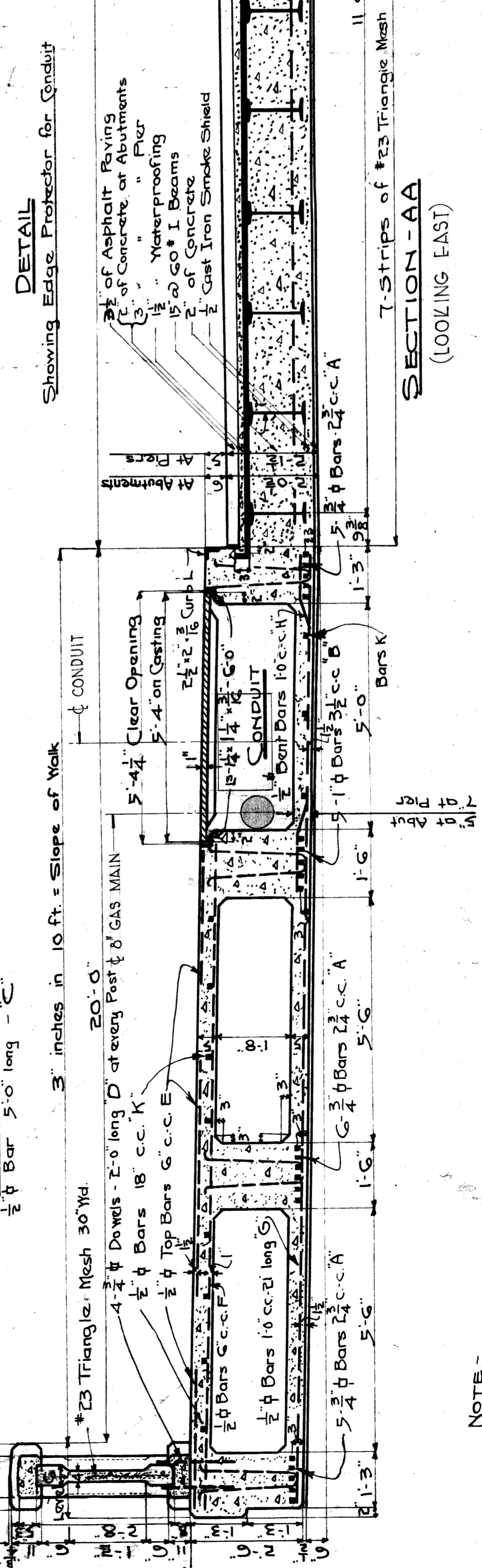
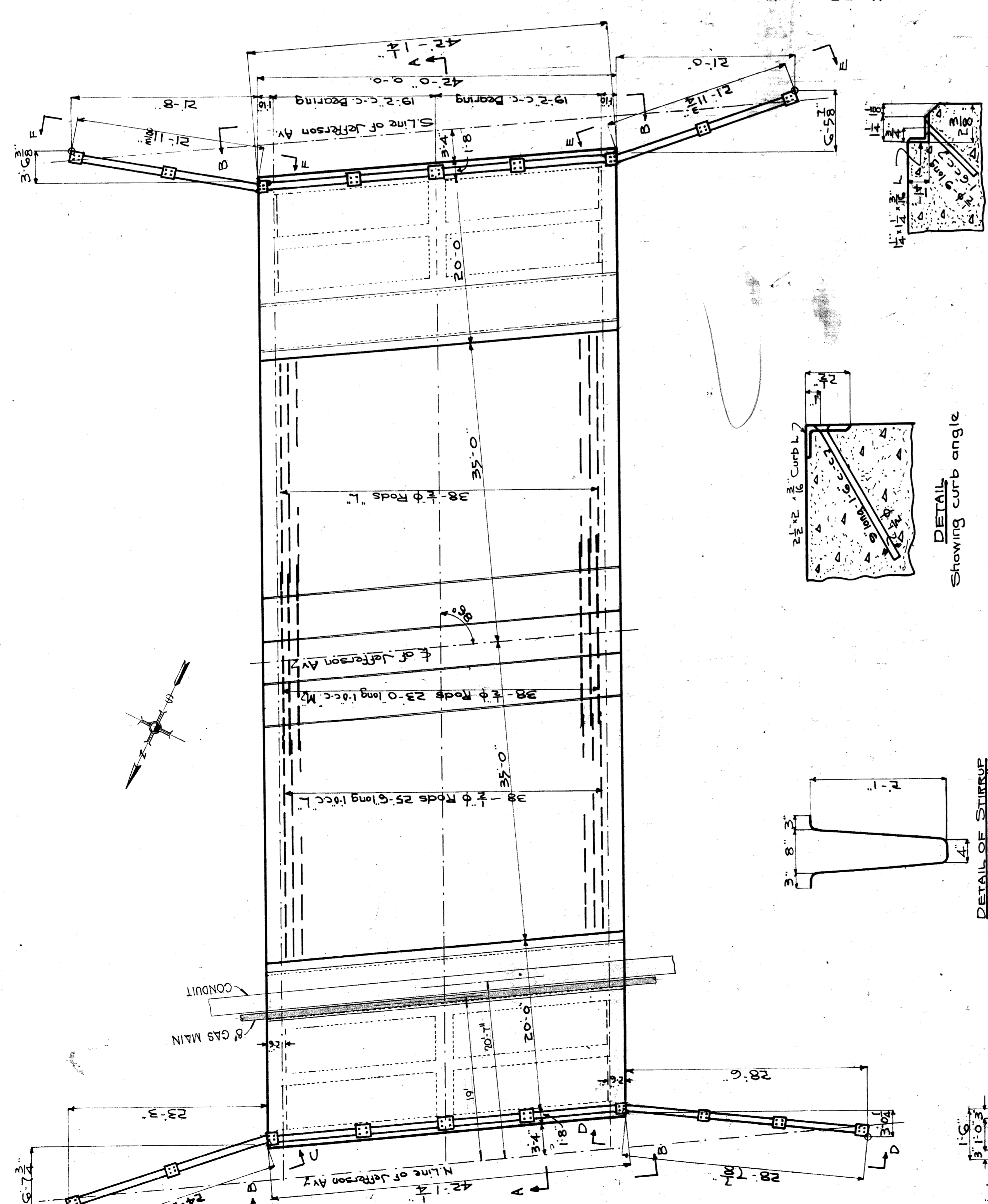
1-Strip 46" Wide

D. P. M.
Bureau of Highways & Expressways
City of Detroit

M. C. R. R. - Div. - DETROIT BELT
Bridge JEFFERSON AVE. E. O.H.
FLOOR & HAND RAIL

Scale: 1" = 1'-0"
Drawn by: J.C.M. July 28, 1916
Checked by: J.C.M. July 28, 1916
Chief Engineer: J.C.M. July 28, 1916
Reviewed: J.C.M. Feb. 13, 1917

Sheet 3 of 3



CLEARANCE OVER TRACKS

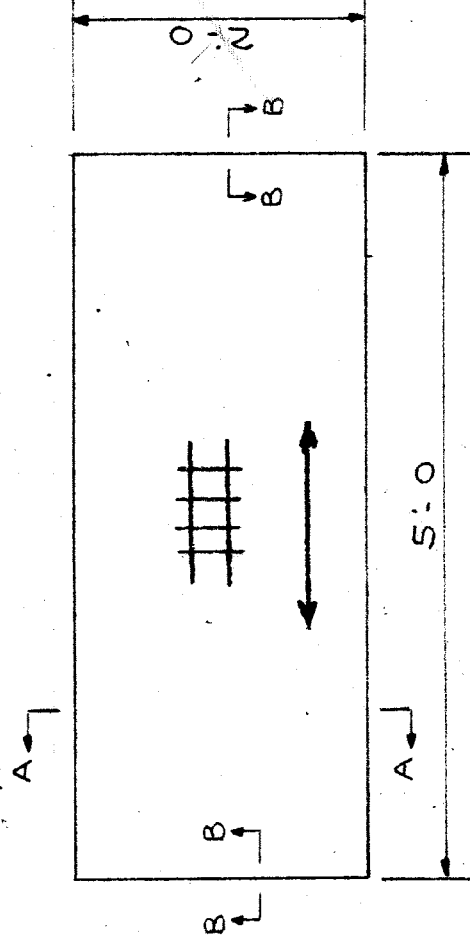
The contractor must maintain at all times clearance over the track now in use of fifteen (15) feet above the top of rail and it will be necessary for special provision to carry forms coming under the side-walk portions, owing to the limited space.

NOTE:
All Beveled Corners of Hand Rail and Coping to be thus -

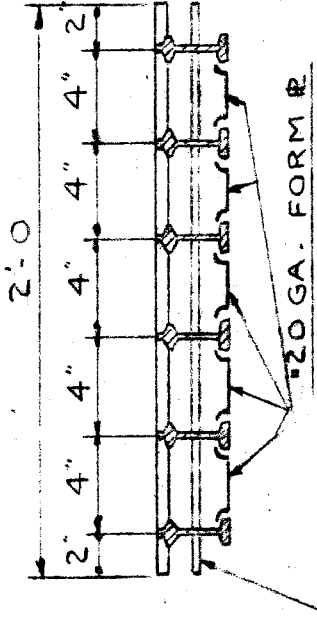
RELIANCE STEEL PRODUCTS CO.
McKEESPORT, PA.

CONT. No. 2-8023
SKETCH No. A-1358

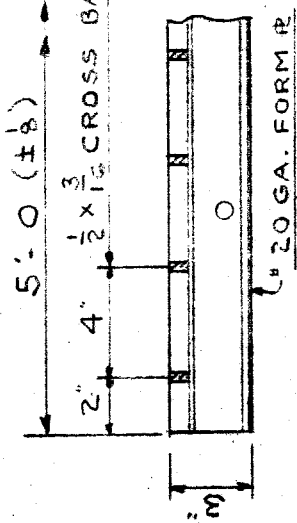
SHEET 1 OF 2



PLAN OF 3" I-BEAM WELD FLOORING
16 PCS REQD.



5/8" ϕ BOTTOM CROSS BAR
(FOR LOCATION SEE
DWG. #A-1358-SHT. 2 OF 2.)



SECTION B-B

1. MATERIAL:

- (a) 3" I-BEAMS - ASTM - A7
- (b) TOP & BOTTOM } COMMERCIAL
CROSS BARS & FORM B } QUALITY STL.

2. ALL JOINTS BETWEEN THE
CROSS BARS & 3" I-BEAMS TO
BE ELECTRO-PRESSURE WELDED.
ALL OTHER WELDS TO BE ARC-WELDS.

3. SHOP PAINT - UNDERSIDE OF
FLOORING TO RECEIVE ONE
SHOP COAT OF RED LEAD PAINT
(MERS STD T-779)

4. FOR TYPICAL DETAILS SEE DWG.
#A-1358-SHT. 2 OF 2.

OFFICE COPY

| |
|---|
| CUSTOMER |
| BARTON - HARBOURNE CO. DETROIT, MICHIGAN |
| ORDER NO. A-1115 |

06/14/61
7/14/61

| | | | | |
|-------------------|---------------------|----------------------|---------------------|---------|
| MADE BY <u>DJ</u> | DATE <u>7-11-61</u> | CHECKED BY <u>PK</u> | DATE <u>7-12-61</u> | REVISED |
|-------------------|---------------------|----------------------|---------------------|---------|

ent 7-12-61

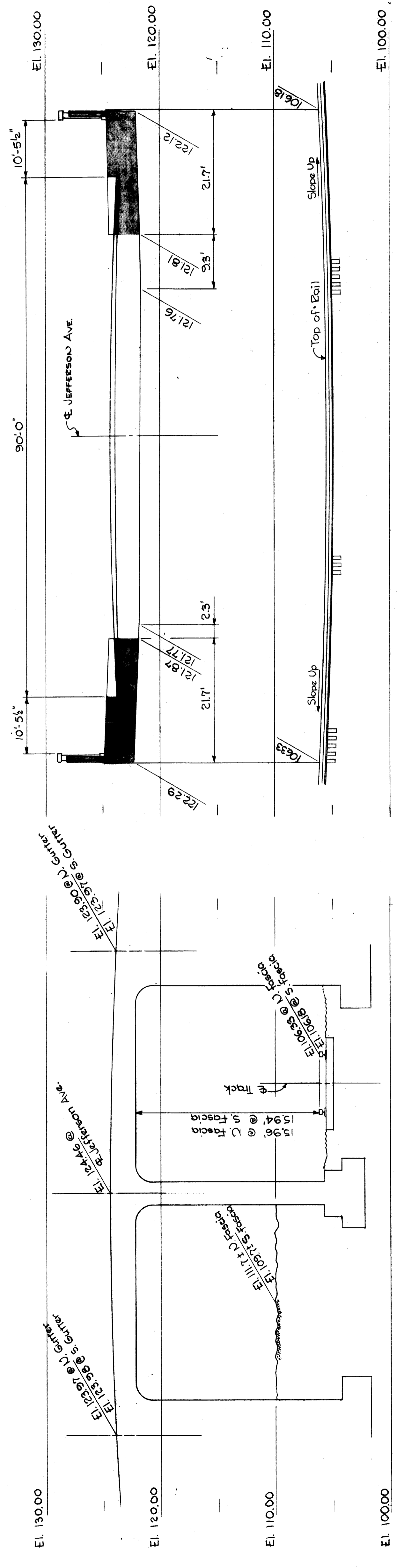
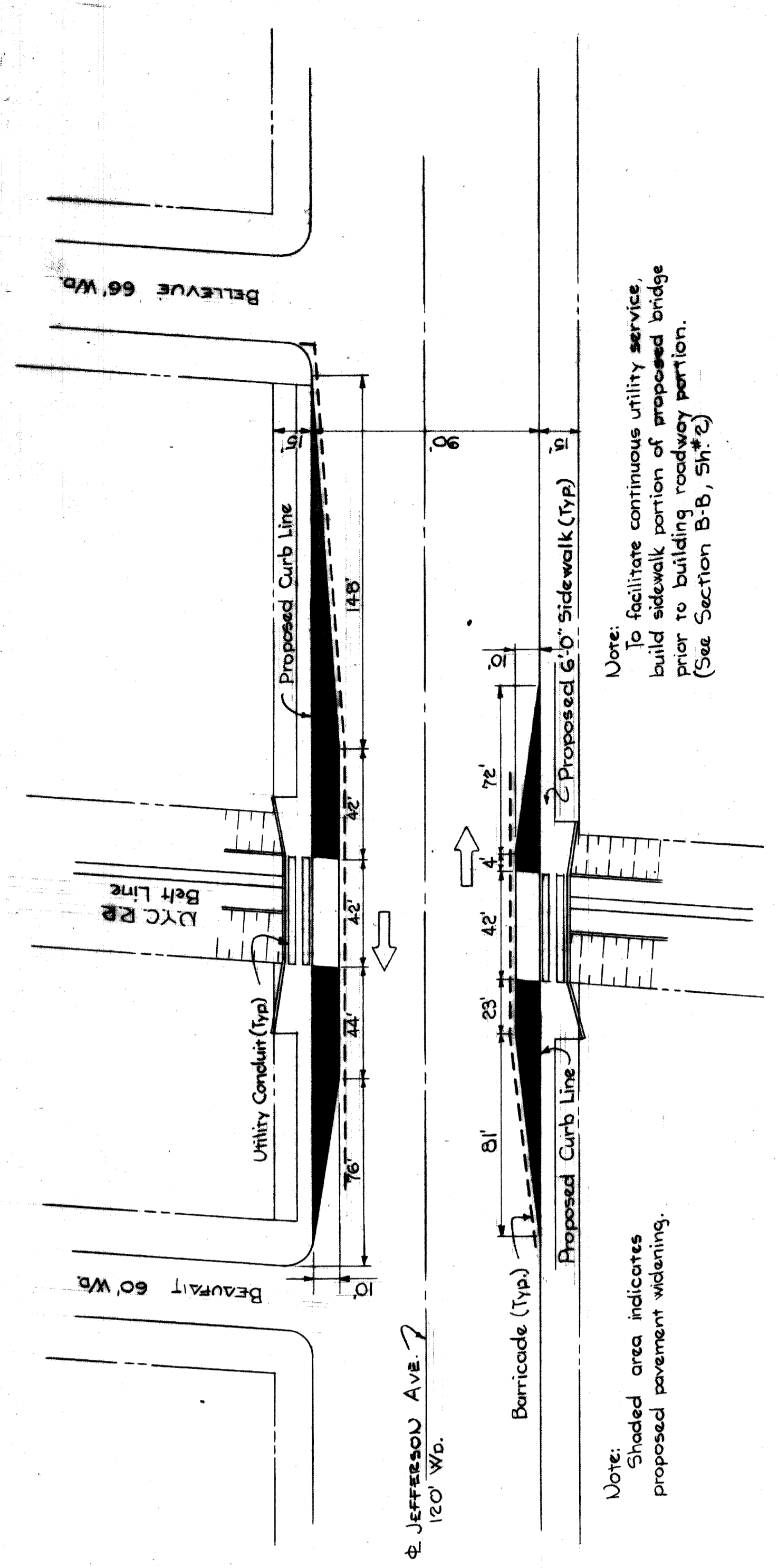
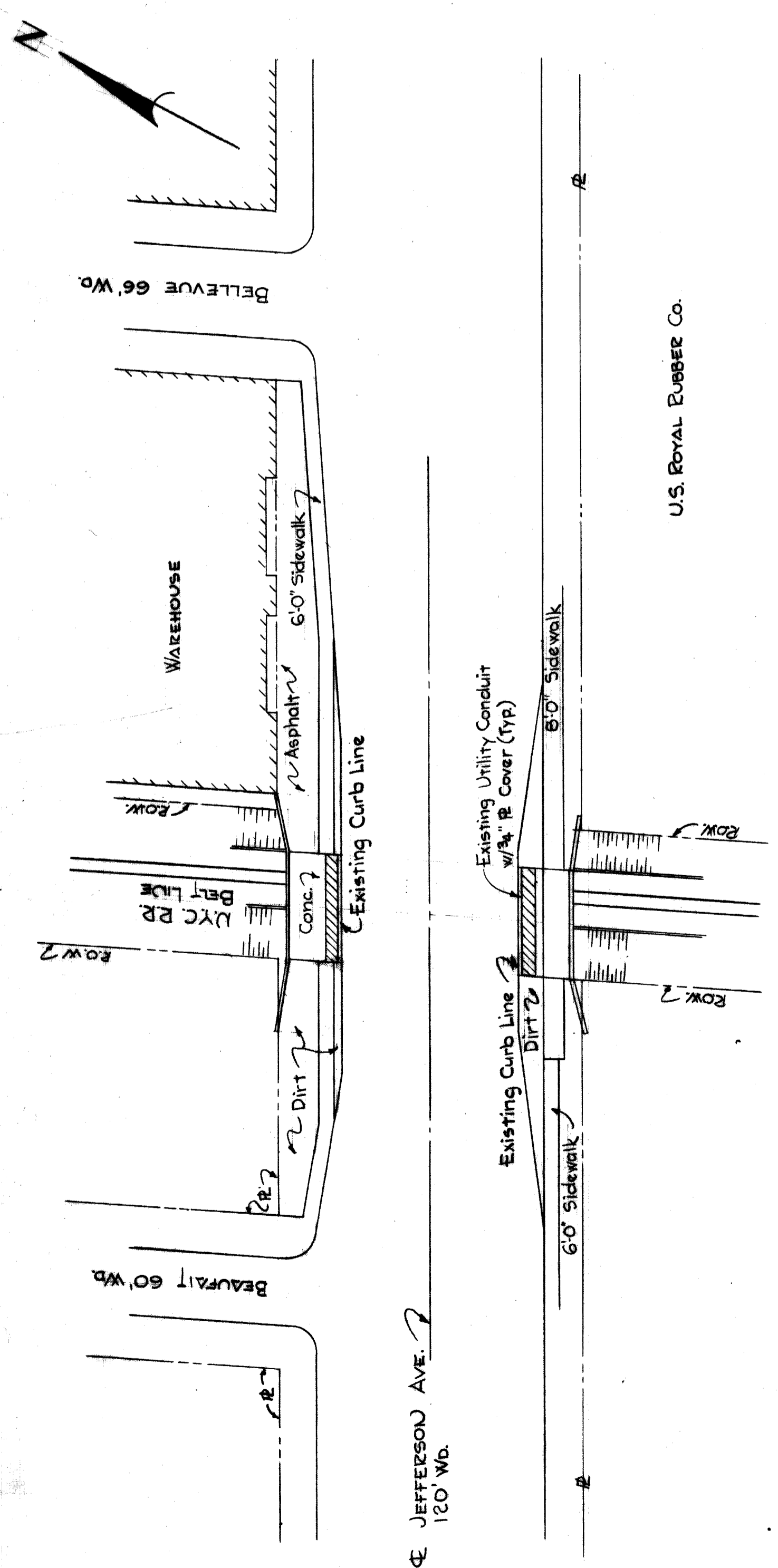
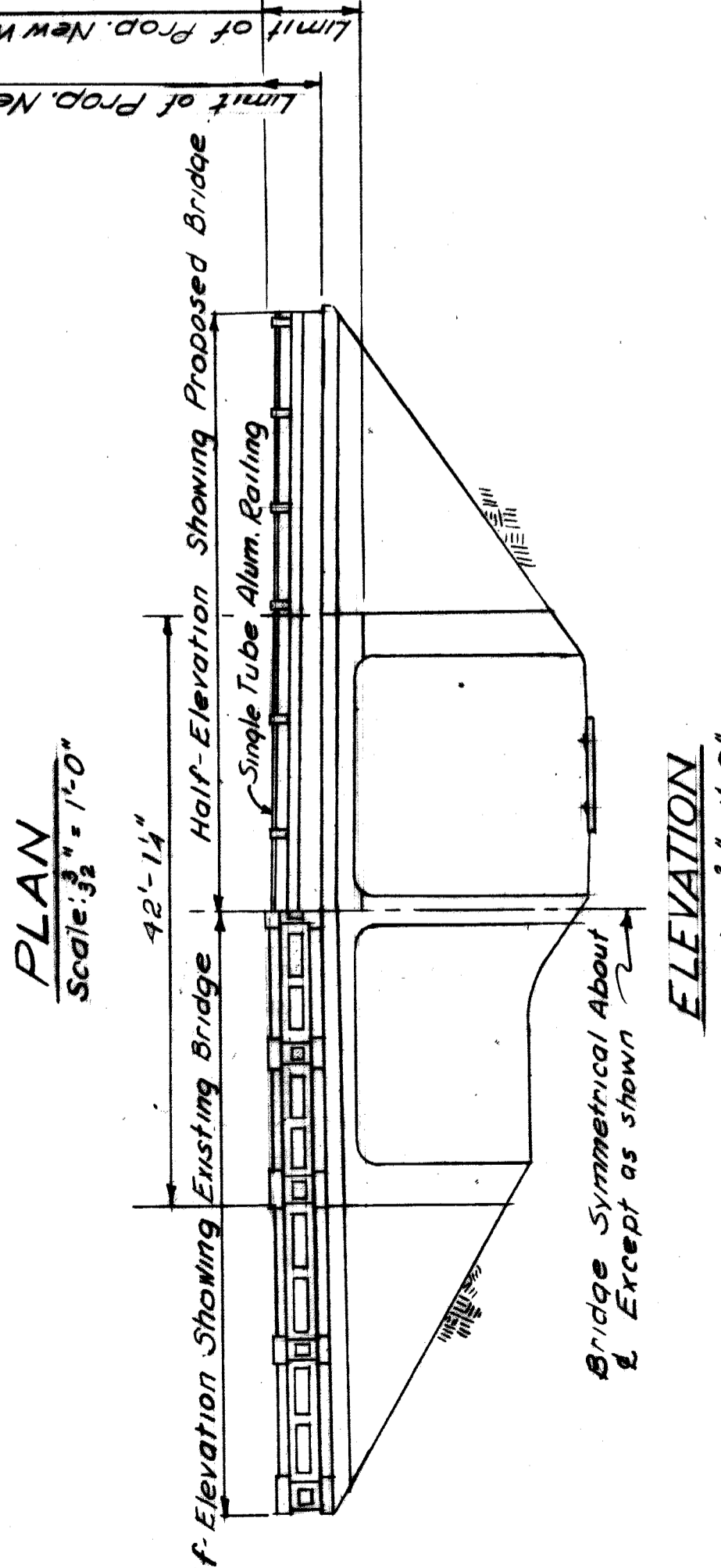
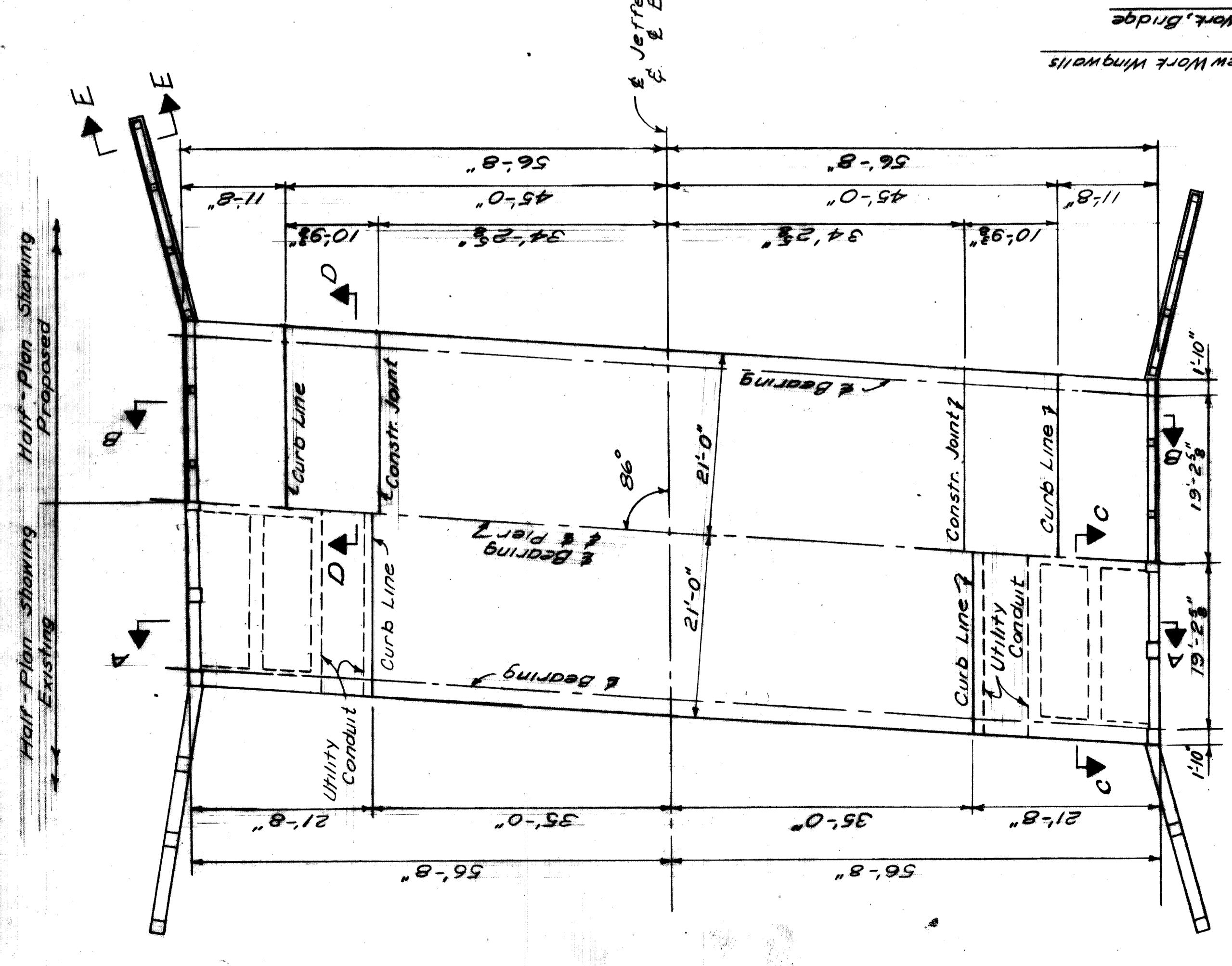


EXHIBIT A

Notes:
These elevations shown are existing.
Shaded area indicates proposed alteration.

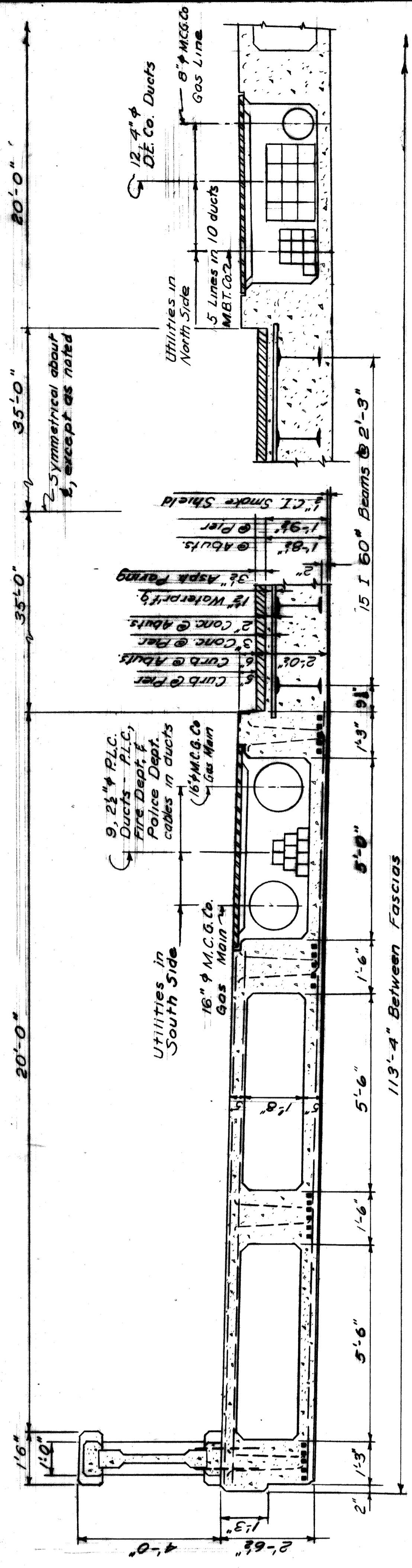
PRELIMINARY PLAN Dated: Sept. 15, 1966

| | | | |
|--|-----------|---|---------------------|
| CITY OF DETROIT DEPARTMENT OF PUBLIC WORKS HIGHWAY & EXPRESSWAY DIVISION BRIDGE WIDENING | | JEFFERSON AVE. BRIDGE X098 OVER N.Y.C.R.R. DETROIT BELT-LINE GENERAL PLAN OF SITE | |
| DESIGNED BY | Locher | APPROVED | STRUCTURAL ENGINEER |
| DRAWN BY | ALLEYBUSH | HEAD ENGINEER OF HIGHWAYS & EXPRESSWAYS | |
| TRACED BY | | ASSOC. CITY ENGINEER | |
| CHECKED BY | J. SWAN | | |
| REVISIONS LOCATED BY COORDINATES ON SHEET | | | |
| DATE | | DATE | |
| JOB No. | 1753 | SHEET | OF 3 SHEETS |
| DRWG No. | C-101 | | |

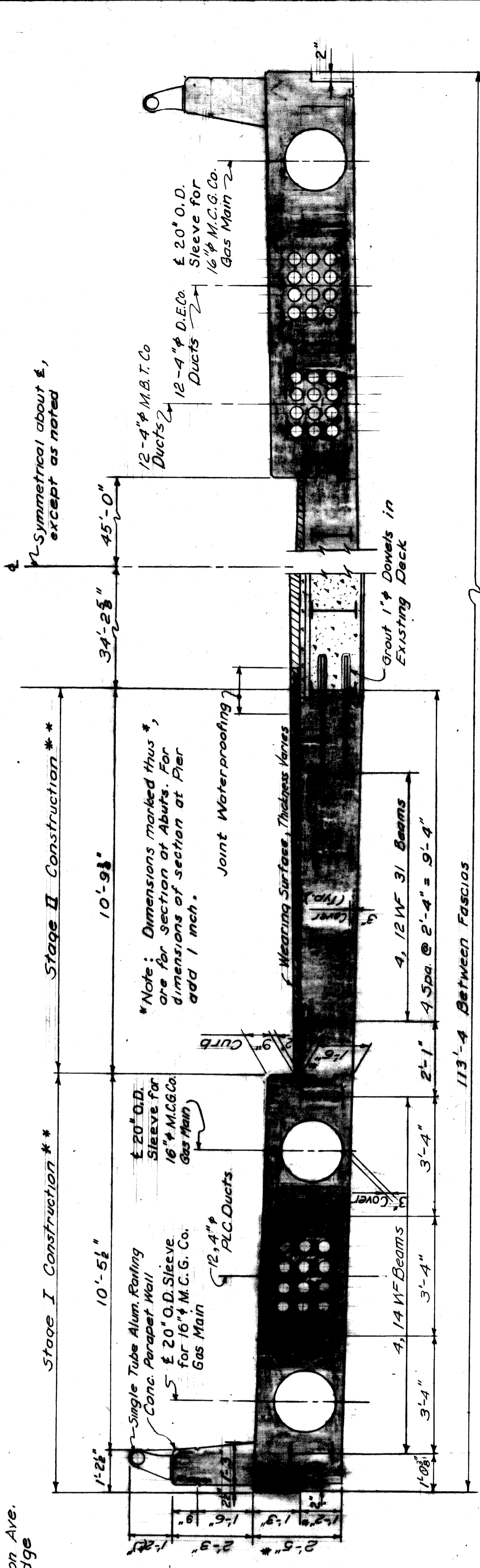


PLAN
Scale: $\frac{3}{8}'' = 1'-0''$

ELEVATION
Scale: $\frac{3}{8}'' = 1'-0''$

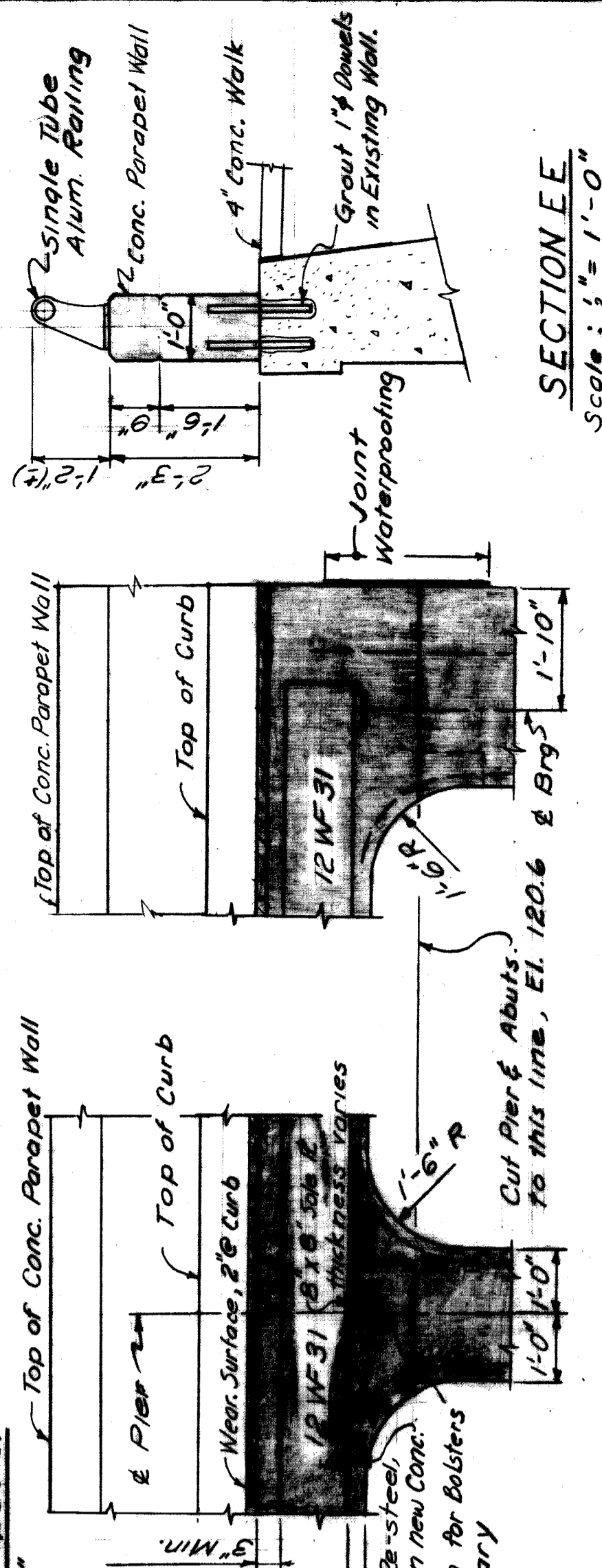


SECTION AA (Existing)
Scale: $\frac{1}{2}'' = 1'-0''$

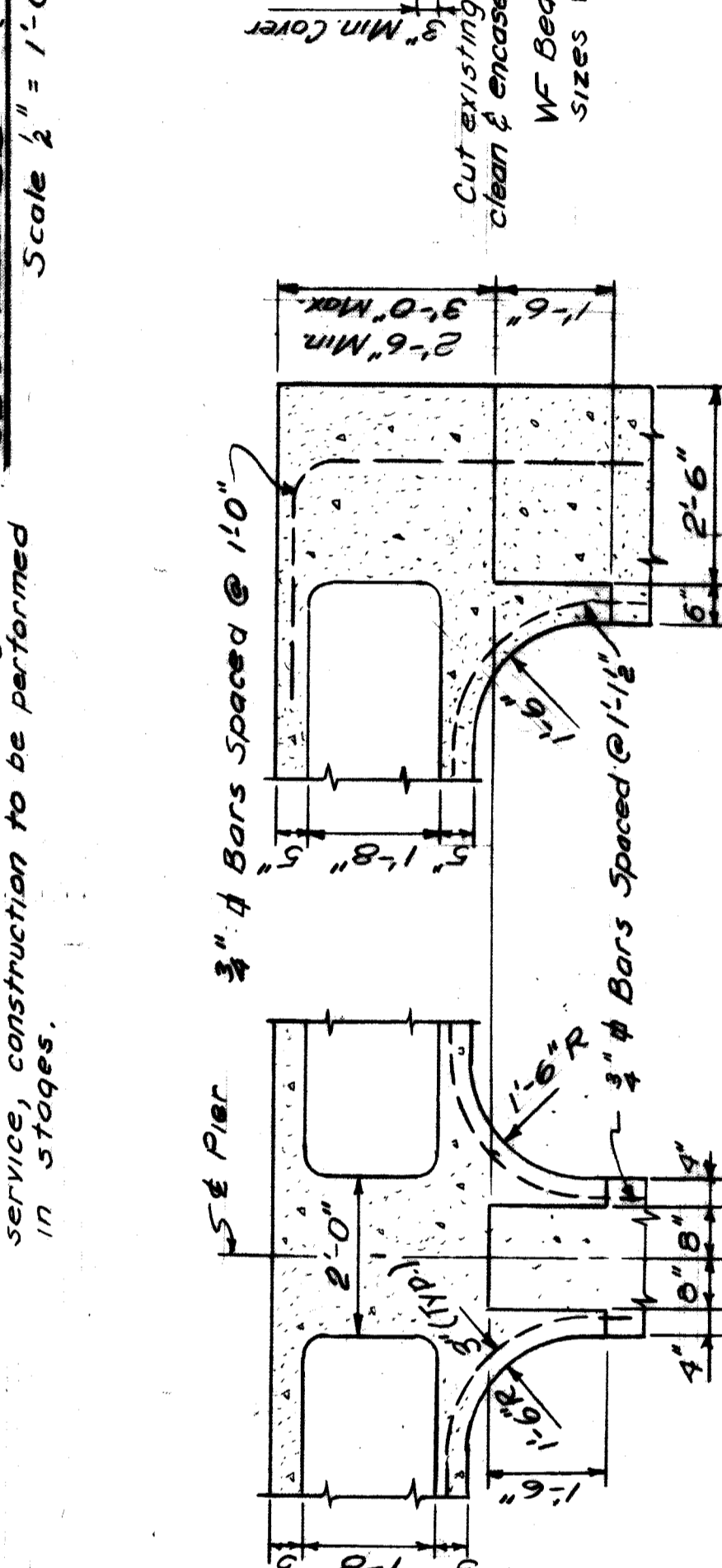


SECTION BB (Proposed)
Scale: $\frac{1}{2}'' = 1'-0''$

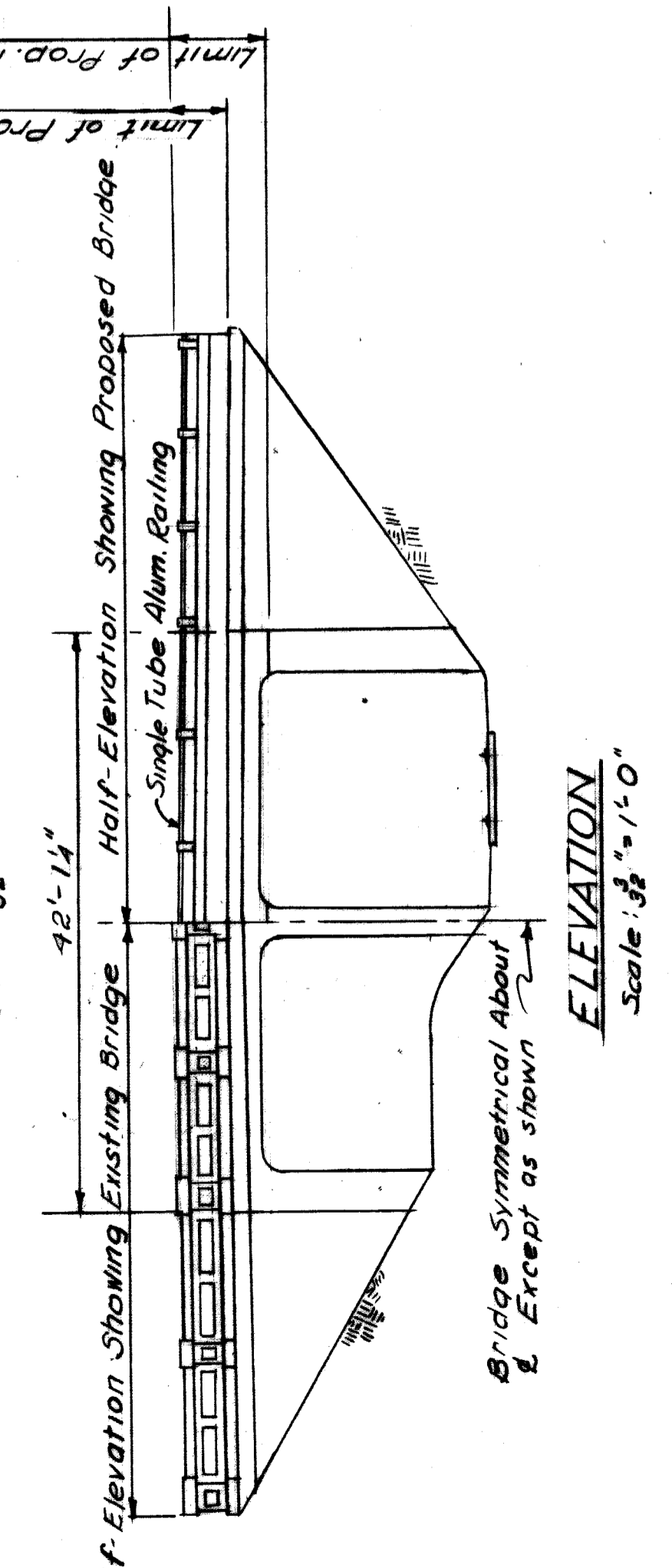
** Note: To facilitate continuous utility service, construction to be performed in stages.



SECTION CC (Existing)
Scale: $\frac{1}{2}'' = 1'-0''$



SECTION DD (Proposed)
Scale: $\frac{1}{2}'' = 1'-0''$

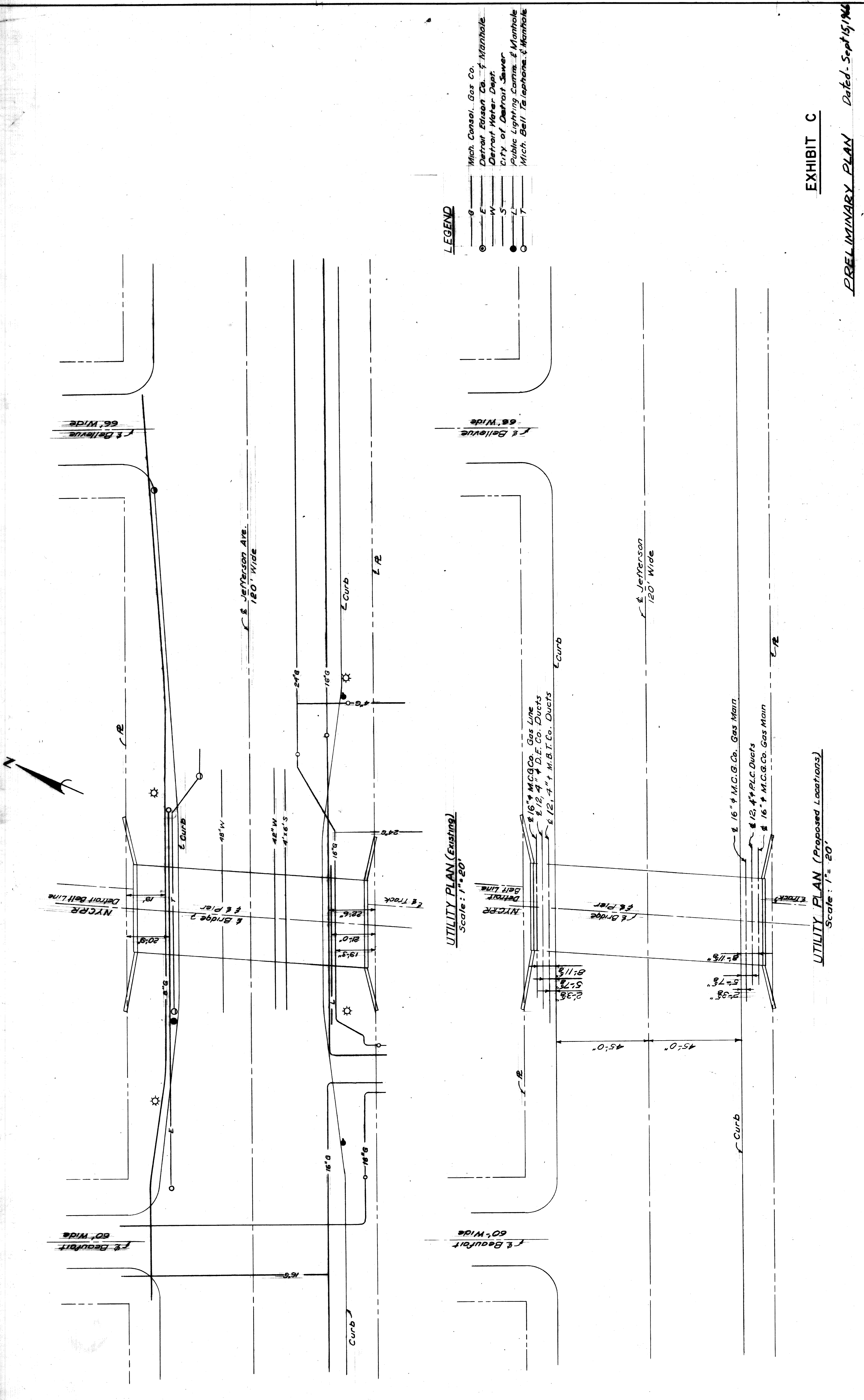


SECTION EE
Scale: $\frac{1}{2}'' = 1'-0''$

EXHIBIT B

PRELIMINARY PLAN Dated - Sept. 15, 1966

| | | | | | |
|--|--|---|--|---|--|
| CITY OF DETROIT DEPARTMENT OF PUBLIC WORKS HIGHWAY & EXPRESSWAY DIVISION | | JEFFERSON AVE. BRIDGE X098 OVER N.Y.C. R.R. DETROIT BELT-LINE | | SHEET 2 OF 3 SHEETS | |
| BRIDGE WIDENING | | GENERAL PLAN OF STRUCTURE | | JOB No. 1753 | |
| DESIGNED BY Locber | | DRAWN BY Locber | | DRWG No. C-102 | |
| TRACED BY STUBM | | CHECKED BY STUBM | | DATE 7-66 | |
| REVISIONS LOCATED BY COORDINATES ON SHEET | | APPROVED: STRUCTURAL ENGINEER | | HEAD ENGINEER OF HIGHWAYS & EXPRESSWAYS | |
| ASSOC. CITY ENGINEER | | ASSOC. CITY ENGINEER | | ASSOC. CITY ENGINEER | |



LEGEND

- G — Mich. Consol. Gas Co.
- E — Detroit Edison Co. & Manhole
- W — Detroit Water Dept.
- S — City of Detroit Sewer
- L — Public Lighting Comm. & Manhole
- T — Mich. Bell Telephone & Manhole

EXHIBIT C

PRELIMINARY PLAN Dated: Sept 15, 1966

| | | | | | | | |
|--|---|--|------|---|------|---|------|
| SHEET 3 OF 3 SHEETS JOB No. 1753 DRWG No. C-103 DATE 1-66 | | JEFFERSON AVE. BRIDGE X098 OVER N.Y.C.R.R. DETROIT BELT-LINE | | CITY OF DETROIT DEPARTMENT OF PUBLIC WORKS HIGHWAY & EXPRESSWAY DIVISION BRIDGE WIDENING | | EXISTING UTILITIES AND PROPOSED ALTERATIONS | |
| DESIGNED BY Locher | APPROVED Locher | STRUCTURAL ENGINEER | | | | | |
| DRAWN BY Locher | HEAD ENGINEER OF HIGHWAYS & EXPRESSWAYS | | | | | | |
| TRACED BY Szymen | ASSOC. CITY ENGINEER | | | | | | |
| CHECKED BY | | | | | | | |
| REVISIONS LOCATED BY COORDINATES ON SHEET | NO. | DESCRIPTION | DATE | DATE | DATE | DATE | DATE |