









**GENERAL NOTES**

Existing Water Mains, as shown, indicate approximate location only as shown by D.M.M.D. records and no guarantee is made as to completeness or accuracy.

Elevations of Existing Water Mains are not known. Approximate elevations shown on the profiles are based on the assumption of 5' average depth. The grades of the Proposed Water Mains are subject to change to suit actual elevations of Existing Water Mains.

Excavation and backfilling for the entire work shall be done by the Contractor. "Service Abandonments" shall be as specified in the Proposal.

The Contractor shall furnish and install all water-works material required for the entire Contract, except for service connections, transfers and abandonments.

All Water Main connections shall be made by Contractor. Services larger than 8" in diameter are "Water Mains" (Not Services) insofar as this Contract is concerned.

Refer to Dwg. No. 2 for Water Service Abandonments and Transfers.

The locations and elevations of existing utilities are shown in accordance with available data. The Contractor shall expose these utilities, where required, to determine actual locations.

Other utilities may be making alterations to their existing systems in the vicinity of the Water Main construction shown on the plans. These utilities should be consulted for the latest information regarding the location of their facilities.

A minimum clearance of one foot vertically and three and one half feet horizontally shall be maintained between the Water Main and other utilities, unless otherwise shown on the plans or approved by the Engineer. If a conflict is indicated between the Water Main and any other utility, that utility should be consulted.

The Reference Numbers called for on the water plans refer to Detroit Metropolitan Water Services drawing numbers.

The location of Fire Hydrants, as shown, are approximate. D.F.D. will give exact location of Proposed Fire Hydrants prior to installation.

Final choice of Existing Fire Hydrants to be relocated will be subject to D.F.D. approval prior to relocation.

Elevation Datum is City of Detroit Datum.

See Structural Plans for details and location of bridge piers, bridge abutments, and retaining walls.

See Road Plans for location of proposed detours.

See Removal Plans for reconstruction, adjustment, removal, and abandonment of items other than Fire Hydrants.

Encasement Details are shown on Dwg. No. 10.

All Water Alteration Quantities are shown on this Drawing.

Valving for D.M.M.S. Sequence of Operations is shown on Dwg. No. 2.

Elevations of the Proposed Water Mains shown on the drawings are Subgrade Elevations unless shown otherwise.

Existing and Proposed Surface Elevations shown on the Drawings are along the Center Line of the Proposed Water Mains.

**PRESTRESSED CONCRETE PIPE NOTES**

Prestressed Pipe for Water Mains shall be designed for a minimum earth cover of 10 feet based on ordinary bedding using a load factor of 1.5, unless otherwise specified or shown on the drawings.

Refer to the Water Main portion of the Supplemental Specifications for additional pipe design requirements.

Prestressed Conc. Cylinder and Embedded Cyl. Water Mains are listed in the Water System Pay Items as Prestressed Conc. Cylinder and Embedded Cyl. Pipe.

**CONSTRUCTION NOTES**

Encasements and Thrust Blocks shall be poured against undisturbed earth. Bottom 3" of Encasement may be poured separate from Encasement and used as a sub-footing.

All Encasements and Thrust Blocks shall terminate at the face of pipe bells.

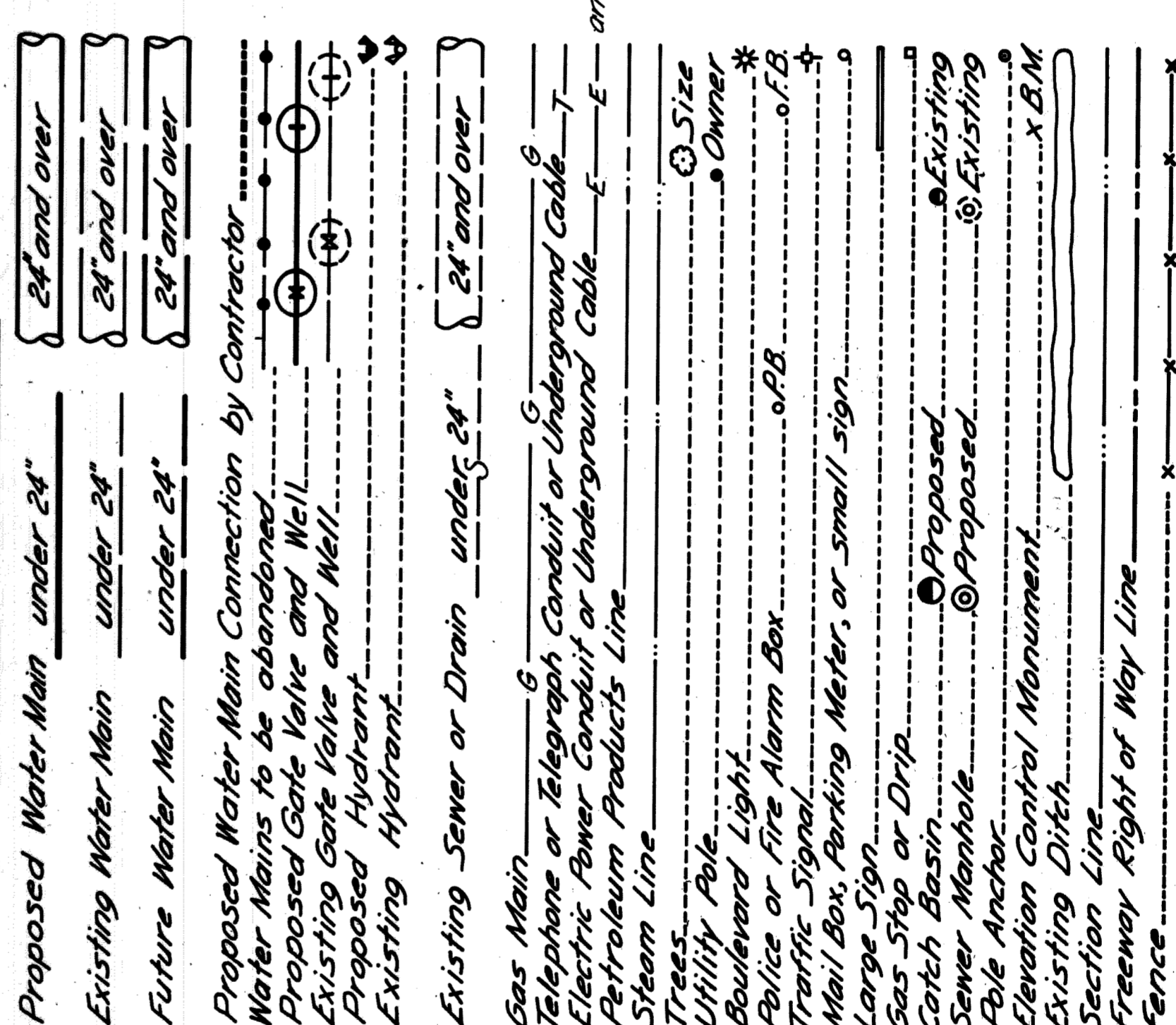
Removal of abandoned Water Mains as required for clearance to construct the Proposed Water Mains is incidental to Water Main construction.

Sheeting and bracing, where required, shall be installed by the Contractor as incidental to Water Main construction.

Contractor shall construct all Concrete Thrust Blocks and Gate Wells.

Scheduling of the connections shall be governed by the "Sequence of Operations" and Flushing and Chlorination specifications which are included in the Water Main portion of the Proposal.

**LEGEND**



**WATER SYSTEM ALTERATION QUANTITIES**

WATER SYSTEM PAY ITEMS	AS PER PLANS		AS CONSTRUCTED
	AMOUNT	AMOUNT	
24" C.I. Water Main (Trench Detail-12)	15 lin. ft.		
6" D.I. Water Main (Trench Detail-11)	120 lin. ft.		
6" D.I. Water Main (Trench Detail-12)	204 lin. ft.		
8" D.I. Water Main (Trench Detail-12)	1450 lin. ft.		
10" D.I. Water Main (Trench Detail-12)	6 lin. ft.		
18" D.I. Water Main (Trench Detail-12)	18 lin. ft.		
16" Prestressed Conc. Emb. Cyl. Pipe (Trench Detail-12)	6 lin. ft.		
24" Prestressed Conc. Emb. Cyl. Pipe (Trench Detail-12)	116.3 lin. ft.		
24" Prestressed Conc. Emb. Cyl. Pipe (Trench Detail-14-18)	101 lin. ft.		
48" A.S.T.M. C-76 C.I. Mail "B" Conc. Pipe Casing, Jacked in Place	80 lin. ft.		
Special Tunnel for 24" Water Main	200 lin. ft.		
6" D.I. Water Main (In Tunnel)	80 lin. ft.		
24" Prestressed Conc. Emb. Cyl. Pipe (In Tunnel)	200 lin. ft.		
6" Gate Valves	1 each		
8" Gate Valves	6 each		
8" Gate Wells	1 each		
8" Gate Wells	7 each		
16" Gate Wells	1 each		
8" Flanged Gate Valves	1 each		
16" Flanged Gate Valves	1 each		
6" Blow-off Wells	1 each		
6" Fire Hydrants	(A) 12 each		
6" Gate Valves & Boxes	(A) 12 each		
8" Gate Valves & Boxes	1 each		
6" Permanent Blow-offs	1 each		
Contractors Connections (16" or less Dia.)	11 each		
Contractors Connections (24" Dia.)	3 each		
Abandon Gate Wells	2 each		
Reconstruct Gate Wells	5 each		
Adjust Gate Well Manhole Covers	6 each		
Air Valve Wells	2 each		
Adjust Gate Valve Boxes	(A) 4 each		
Concrete Grade 2" (For Water Main Structures)	68 cu. yds.		
Steel Reinforcement (For Water Main Structures)	2823 lbs.		

DESIGNED BY	7-17-72	REVISIONS LOCATED BY COORDINATES ON SHEET
DRAWN BY	G.F.L. 4-72	
TRACED BY		
CHECKED BY		

CITY OF DETROIT  
DEPARTMENT OF PUBLIC WORKS  
CITY ENGINEERS OFFICE

APPROVED: [Signature]

DATE: 7-17-72

JOB NO. D-962-1

DESIGNED BY: [Signature]

DRAWN BY: [Signature]

TRACED BY: [Signature]

CHECKED BY: [Signature]

REVISIONS LOCATED BY COORDINATES ON SHEET

DESIGN NO. 3 OF 14

COUNTY PROJECT

COUNTY JOB

ISSUE NO. 4

DATE

DETROIT METRO WATER DEPARTMENT  
WATER SYSTEM

T-4000(3)

21-M

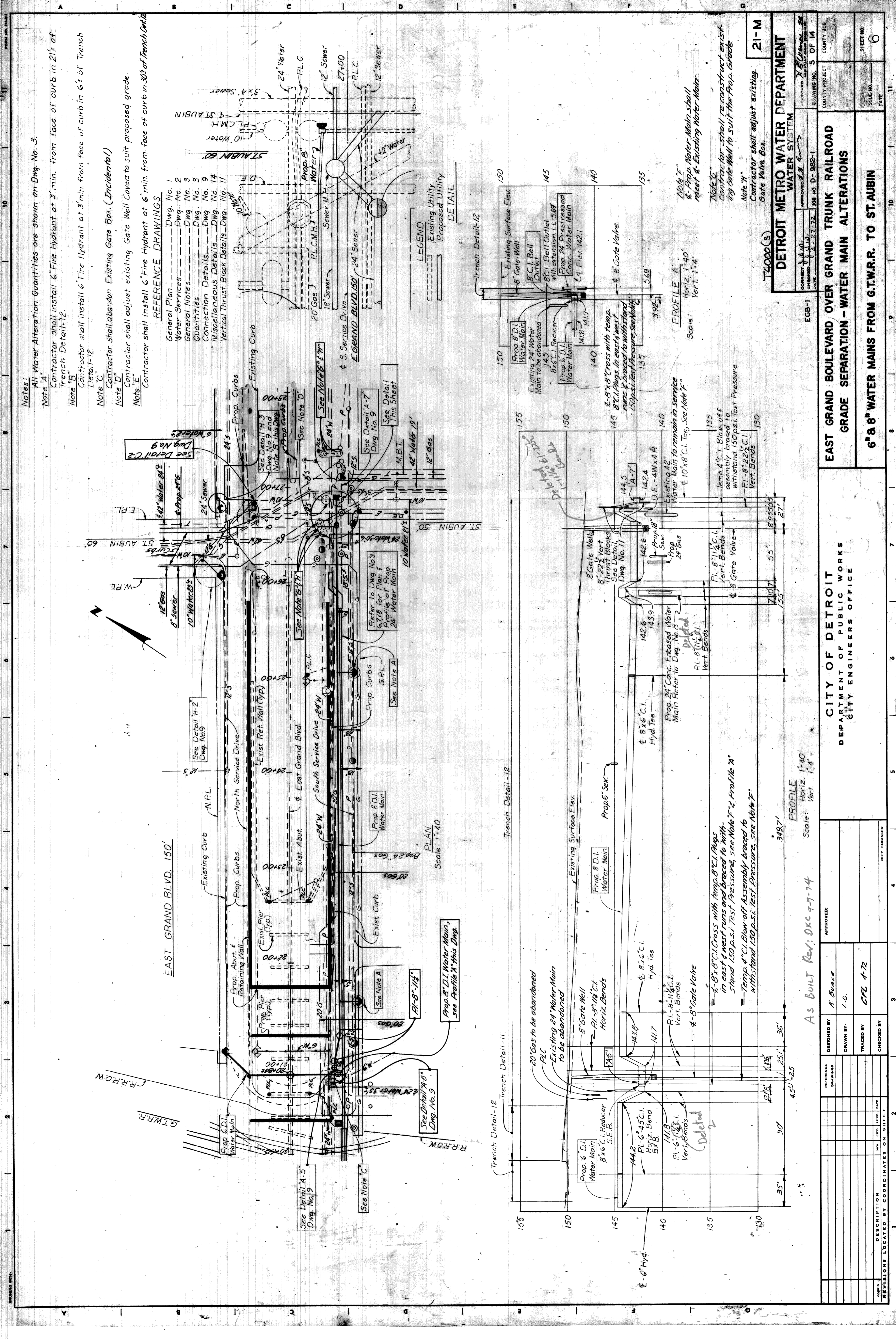
EAST GRAND BOULEVARD OVER GRAND TRUNK RAILROAD  
GRADE SEPARATION - WATER MAIN ALTERATIONS

GENERAL NOTES AND QUANTITIES









**Notes:**  
 All Water Alteration Quantities are shown on Dwg. No. 3.  
 Note A: Contractor shall install 6" Fire Hydrant at 3' min. from face of curb in 2 1/2' of Trench Detail-12.  
 Note B: Contractor shall install 6" Fire Hydrant at 3' min. from face of curb in 6' of Trench Detail-12.  
 Note C: Contractor shall abandon Existing Gate Box. (Incidental!)  
 Note D: Contractor shall adjust existing Gate Well Covers to suit proposed grade.  
 Note E: Contractor shall install 6" Fire Hydrant at 6' min. from face of curb in 30' of Trench Detail-12.

- REFERENCE DRAWINGS**
- General Plan --- Dwg. No. 1
  - Water Services --- Dwg. No. 2
  - General Notes --- Dwg. No. 3
  - Quantities --- Dwg. No. 3
  - Connection Details --- Dwg. No. 9
  - Miscellaneous Details --- Dwg. No. 14
  - Vertical Thrust Block Details --- Dwg. No. 11

**LEGEND**

- Existing Utility
- Proposed Utility

**DETROIT METRO WATER DEPARTMENT**  
**WATER SYSTEM**

APPROVED: *[Signature]*  
 DRAWING NO. 5 OF 14  
 COUNTY PROJECT: \_\_\_\_\_  
 COUNTY JOB: \_\_\_\_\_  
 SHEET NO.: 6  
 DATE: \_\_\_\_\_

**EAST GRAND BOULEVARD OVER GRAND TRUNK RAILROAD  
 GRADE SEPARATION - WATER MAIN ALTERATIONS**

**CITY OF DETROIT**  
 DEPARTMENT OF PUBLIC WORKS  
 CITY ENGINEERS OFFICE

NO.	DESCRIPTION	DATE

DESIGNED BY: *A. Bunce*  
 DRAWN BY: *L.G.*  
 TRACED BY: *GFL 4-72*  
 CHECKED BY: \_\_\_\_\_

As BUILT Rev: DKC 9-7-74

**PROFILE A**  
 Scale: Horiz. 1"=40'  
 Vert. 1"=4'

**PROFILE F**  
 Scale: Horiz. 1"=40'  
 Vert. 1"=4'

**PROFILE G**  
 Scale: Horiz. 1"=40'  
 Vert. 1"=4'

**PROFILE H**  
 Scale: Horiz. 1"=40'  
 Vert. 1"=4'

**PROFILE I**  
 Scale: Horiz. 1"=40'  
 Vert. 1"=4'

**PROFILE J**  
 Scale: Horiz. 1"=40'  
 Vert. 1"=4'

**PROFILE K**  
 Scale: Horiz. 1"=40'  
 Vert. 1"=4'

**PROFILE L**  
 Scale: Horiz. 1"=40'  
 Vert. 1"=4'

**PROFILE M**  
 Scale: Horiz. 1"=40'  
 Vert. 1"=4'

**PROFILE N**  
 Scale: Horiz. 1"=40'  
 Vert. 1"=4'

**PROFILE O**  
 Scale: Horiz. 1"=40'  
 Vert. 1"=4'

**PROFILE P**  
 Scale: Horiz. 1"=40'  
 Vert. 1"=4'

**PROFILE Q**  
 Scale: Horiz. 1"=40'  
 Vert. 1"=4'

**PROFILE R**  
 Scale: Horiz. 1"=40'  
 Vert. 1"=4'

**PROFILE S**  
 Scale: Horiz. 1"=40'  
 Vert. 1"=4'

**PROFILE T**  
 Scale: Horiz. 1"=40'  
 Vert. 1"=4'

**PROFILE U**  
 Scale: Horiz. 1"=40'  
 Vert. 1"=4'

**PROFILE V**  
 Scale: Horiz. 1"=40'  
 Vert. 1"=4'

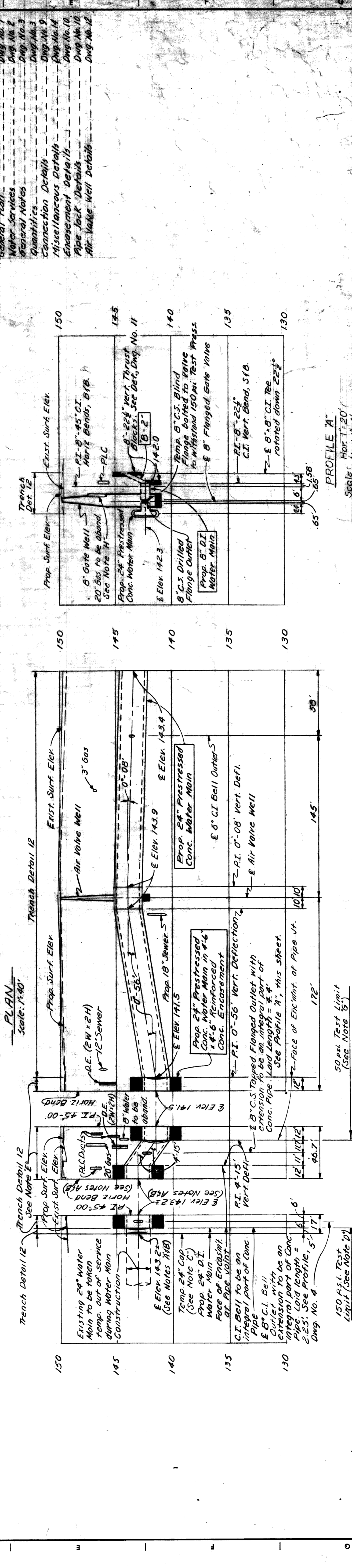
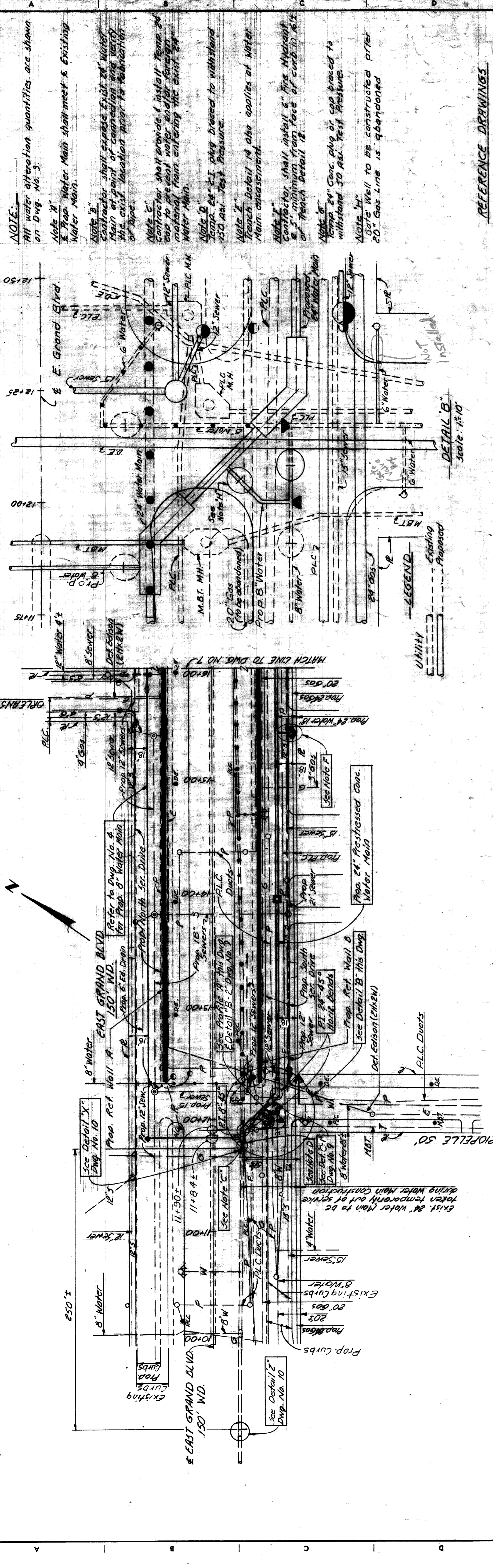
**PROFILE W**  
 Scale: Horiz. 1"=40'  
 Vert. 1"=4'

**PROFILE X**  
 Scale: Horiz. 1"=40'  
 Vert. 1"=4'

**PROFILE Y**  
 Scale: Horiz. 1"=40'  
 Vert. 1"=4'

**PROFILE Z**  
 Scale: Horiz. 1"=40'  
 Vert. 1"=4'





**NOTE:**  
 All water alteration quantities are shown on Dwg. No. 3.  
 Note 10" Prop. Water Main shall meet & Existing Water Main.  
 Note 12" Contractor shall expose Exist 24" Water Main at point of connection and verify the exist. location prior to fabrication of pipe.  
 Note 15" Contractor shall provide & install Temp. 24" cap to prevent water and/or foreign material from entering the exist. 24" Water Main.  
 Note 20" Temp. 24" C.I. plug brace to withstand 250 psi Test Pressure.  
 Note 24" Trench Detail 14 also applies at Water Main encasement.  
 Note 28" Contractor shall install 6" Fire Hydrant & 5" minimum from face of curb to 10.16.12 of Trench Detail 12.  
 Note 30" Temp. 24" Conc. plug or cap brace to withstand 50 psi Test Pressure.  
 Note 36" Gate Well to be constructed after 20" Gas Line is abandoned.

**REFERENCE DRAWINGS**

General Plan	Dwg. No. 1
Water Services	Dwg. No. 2
General Notes	Dwg. No. 3
Quantities	Dwg. No. 9
Connection Details	Dwg. No. 14
Miscellaneous Details	Dwg. No. 10
Encasement Details	Dwg. No. 10
Pipe Jack Details	Dwg. No. 10
Air Valve Well Details	Dwg. No. 12

**LEGEND**  
 --- Existing  
 --- Proposed

**PLAN**  
 Scale: 1"=40'

**PROFILE**  
 Scale: Hor. 1"=20'  
 Vert. 1"=4'

**DETAIL B**  
 Scale: 1"=10'

**DETROIT METRO WATER DEPARTMENT**  
 WATER SYSTEM

APPROVED: *[Signature]*  
 DATE: 4-27-74  
 JOB NO. D-982-1  
 DRAWING NO. 6 OF 14  
 COUNTY PROJECT  
 SHEET NO. 7

**EAST GRAND BOULEVARD OVER GRAND TRUNK RAILROAD**  
**GRADE SEPARATION - WATER MAIN ALTERATIONS**  
 24" WATER MAIN IN SOUTH SER. DR. FROM RIOPELLE TO APPROX. 360' E. OF E. RIOPELLE

**CITY OF DETROIT**  
 DEPARTMENT OF PUBLIC WORKS  
 CITY ENGINEERS OFFICE

APPROVED: *[Signature]*  
 Scale: Hor. 1"=40'  
 Vert. 1"=4'

AS BUILT Rev. DKC 7-9-74

DESIGNED BY	B. Comly
DRAWN BY	A.G./R. Bounce
TRACED BY	A.G.
CHECKED BY	

REVISIONS LOCATED BY COORDINATES ON SHEET	
DESCRIPTION	
DATE	





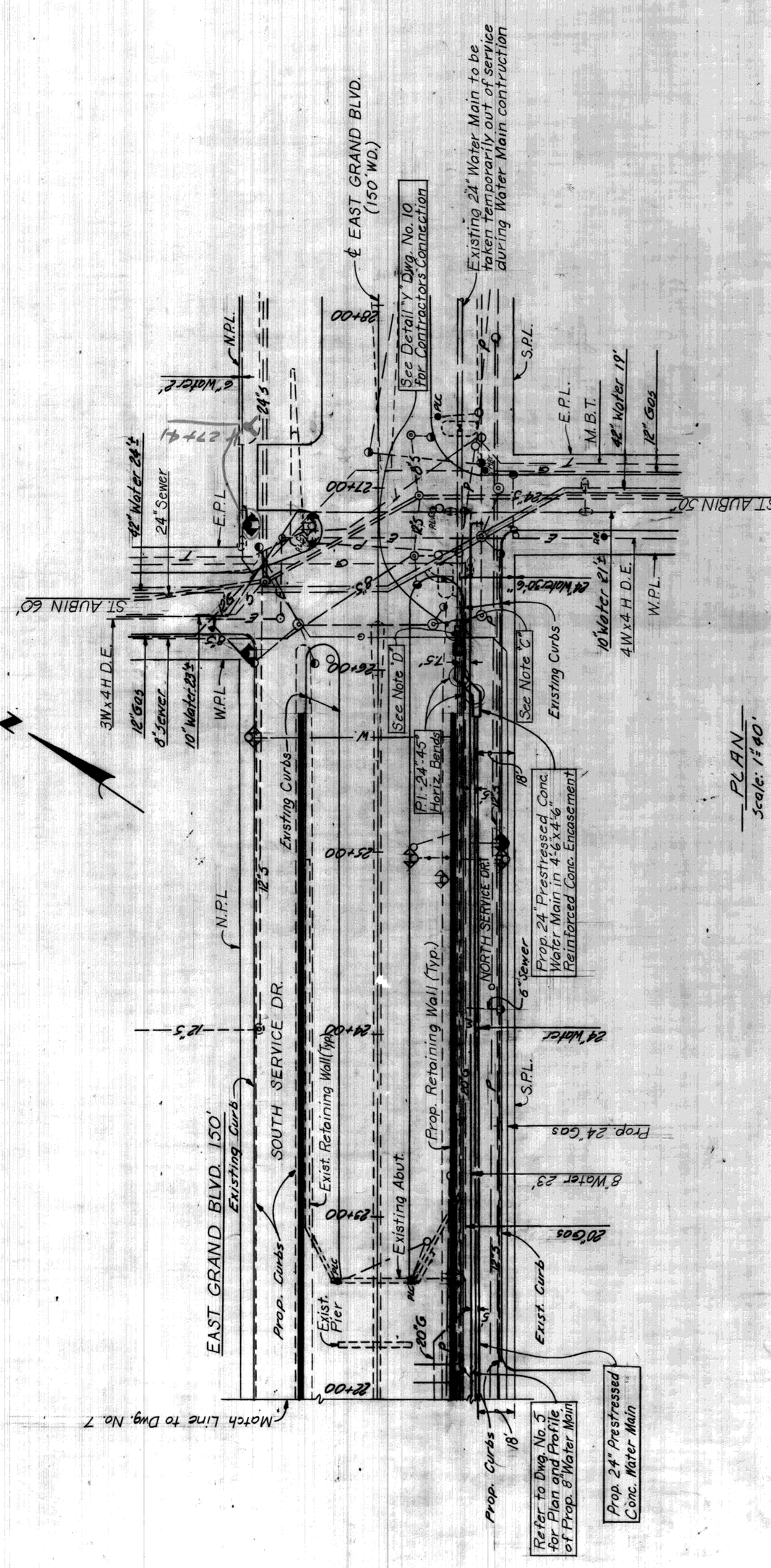


11 10 9 8 7 6 5 4 3 2 1

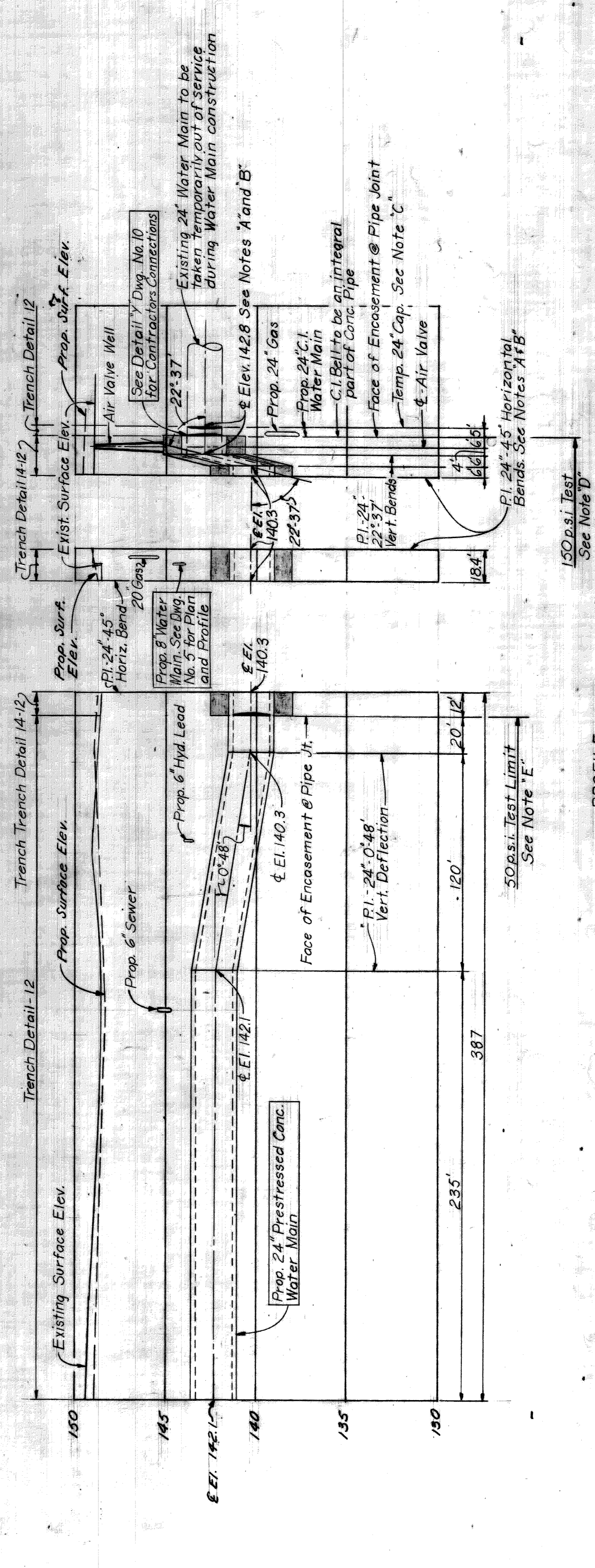
**Notes:**  
 All water alteration quantities are shown on Dwg. No. 3.  
**Note "A"**  
 Prop. Water Main shall meet & Existing Water Main.  
**Note "B"**  
 Contractor shall expose Existing 24" Water Main at point of connection and verify the existing location prior to fabrication of Pipe.  
**Note "C"**  
 Contractor shall provide and install Temp. 24" Cap to prevent water and/or foreign material from entering the existing 24" Water Main.  
**Note "D"**  
 Temp. 24" C.I. Plug braced to withstand 150 p.s.i. Test Pressure.  
**Note "E"**  
 Temp. 24" Conc. Plug or Cap braced to withstand 50 p.s.i. Test Pressure.

**REFERENCE DRAWINGS**

General Plan	Dwg. No. 1
Water Services	2
General Notes	3
Quantities	3
Connection Details	9
Miscellaneous Details	14
Pipe Jack Details	10
Encasement Details	10



**PLAN**  
 Scale: 1"=40'



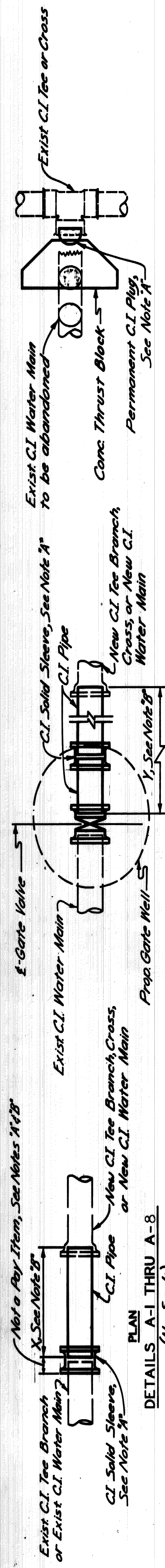
**PROFILE**  
 Scale: Hor. 1"=40'  
 Vert. 1"=4'

AS BUILT REV. DKE 9-9-74

**DETROIT METRO WATER DEPARTMENT**  
**WATER SYSTEM**  
 APPROVED: [Signature]  
 DATE: 4-27-72  
 JOB NO. D-982-1  
 DRAWING NO. 8 OF 14

CITY OF DETROIT DEPARTMENT OF PUBLIC WORKS CITY ENGINEERS OFFICE		EAST GRAND BOULEVARD OVER GRAND TRUNK RAILROAD GRADE SEPARATION - WATER MAIN ALTERATIONS		COUNTY PROJECT	
DESIGNED BY: R. Burice		DRAWN BY: L.G./A.G.		SHEET NO. 9	
TRACED BY: A.G.		CHECKED BY:		ISSUE NO.	
REVISIONS LOCATED BY COORDINATES ON SHEET		DATE		DATE	





PLAN  
DETAILS A-1 THRU A-8  
(No Scale)

SCHEDULE FOR DETAIL "A"

DETAIL NO.	FROM DWG. NO.	NEW WATER MAIN SIZE	NEW TEE SIZE OF C.I. PIPE	X	TRENCH DETAIL
A-1	4		12" x 12"	10'	12
A-2	4		8" x 8"	12'	12
A-3	4	6"	6"	7'	12
A-4	5		8" x 8"	6'	12
A-5	5	6"	6"	11'	12
A-6	5	10"	10" x 8"	3'	12
A-7	5	8"	8"	5'	12
A-8	4		8" x 8"	5'	12

PLAN  
DETAILS B-1 THRU B-2  
(No Scale)

SCHEDULE FOR DETAIL "B"

DETAIL NO.	FROM DWG. NO.	NEW WATER MAIN SIZE	NEW TEE SIZE	SIZE OF C.I. PIPE	SIZE OF GATE VALVE	Y	TRENCH DETAIL
B-1	4		8" x 8"	8"	8"	12'	12
B-2	6		8" x 8"	8"	8"	21'	12

PLAN  
DETAILS C-1 THRU C-2  
(No Scale)

SCHEDULE FOR DETAIL "C"

DETAIL NO.	FROM DWG. NO.	PORTION OF TEE OR CROSS TO BE PLUGGED	SIZE OF TEE OR CROSS	PLUG SIZE	TRENCH DETAIL
C-1	4	North Run	10" x 6" Hyd. Tee	8"	12
C-2	5	West Branch	10" x 6" Hyd. Tee	6"	12

**NOTES FOR CONTRACTOR'S CONNECTIONS**  
Contractor's Connections are shown by solid lines. Adjacent contractor's work and/or existing Water Mains are indicated by dashed lines. (See Details, this sheet).

Contractor shall cut/cap or plug existing Water Mains to remain in service where required in accordance with supplemental specifications.

4" C.I. Blow-off Assemblies, C.I. Plugs and caps have not been shown.

Contractor shall install and later remove all temporary C.I. Plugs, Tees and Blow-off assemblies.

Contractor shall furnish and install C.I. Pipe and fittings necessary to complete the connections shown.

Contractor shall construct all Concrete Thrust Blocks and Gate Wells.

Contractor shall install all Temporary bracing for Water Main work.

It is not normally anticipated that bends requiring Thrust Blocks will be required for Connections unless otherwise shown.

**Note 2:**  
Plugs and caps, temporary blow-offs, air valves, corporation stops, pipe jacks, solid sleeves, jointing material, bracing, and blocking are incidental to water main construction and will not be paid for separately.

**Note 3:**  
Limits shown for dimensions "x" and "y" shall be used to measure laid length of pipe.

**ITEMS INCLUDED IN CONNECTIONS**

- ① Rotate Tee down 22 1/2°.
- ③ 1-42° C.I. Horizontal Deflection rotate to suit.
- ④ 1-90° C.I. Horizontal Deflection adjust to suit.
- ⑤ 1-10" x 8" C.I. Tee.
- ⑥ 1-45° C.I. Horizontal Bend.
- ⑦ 1-22 1/2° C.I. Vert. Bend.

**SCHEDULE OF HYDRANT INSTALLATION ON EXISTING WATER MAINS**  
DETAIL H-1 THRU H-3

DETAIL NO.	FROM DWG. NO.	EXIST. OR NEW WATER MAIN SIZE	SIZE OF VALVE	LENGTH OF C.I. WATER MAIN	FIRE HYDRANT	TRENCH DETAIL
H-1	4	6"	6" Gate Valve	10'	6"	12
H-2	5	10"	6" Gate Valve	32'	6"	12
H-3	5	10"	6" Gate Valve	6'	6"	12

① Gate Box shall be furnished & installed for each valve.

21-M

14000(3)

**DETROIT METRO WATER DEPARTMENT**  
WATER SYSTEM

APPROVED: *[Signature]*  
DATE: 04-27-72 JOB NO. D-982-1

**CITY OF DETROIT**  
DEPARTMENT OF PUBLIC WORKS  
CITY ENGINEERS OFFICE

**EAST GRAND BOULEVARD OVER GRAND TRUNK RAILROAD  
GRADE SEPARATION - WATER MAIN ALTERATIONS**

**CONTRACTOR'S CONNECTION DETAILS**

EGB-1

COUNTY PROJECT: \_\_\_\_\_ COUNTY JOB: \_\_\_\_\_  
DRAWING NO. 9 OF 14  
ISSUE NO. \_\_\_\_\_ SHEET NO. 10  
DATE \_\_\_\_\_















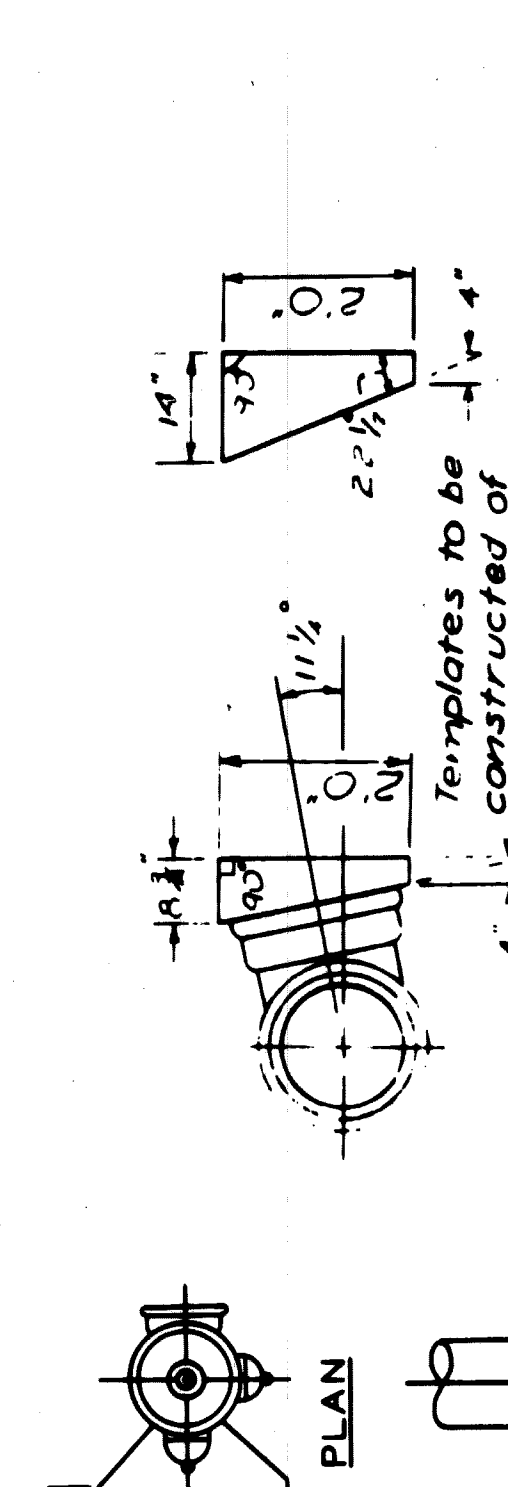




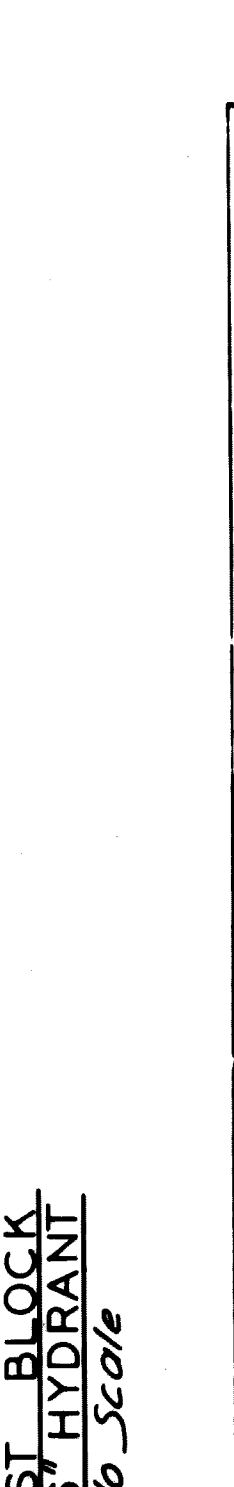
**SCHEDULE OF THRUST BLOCK DIMENSIONS**

BLIND SIZE	CODE	G	R	S	T	U	V	W	X
6" x 8"	90	0' 9"	1' 0"	3' 4"	1' 8"	2' 6"	1' 3"	1' 11"	1' 2"
12" x 8"	90	0' 9"	1' 4"	5' 6"	2' 9"	3' 0"	1' 6"	2' 4"	1' 8"
16" x 8"	90	1' 0"	1' 8"	6' 0"	3' 0"	5' 0"	2' 6"	3' 0"	2' 8"
6" x 8"	45	0' 9"	1' 0"	2' 4"	1' 2"	2' 0"	1' 0"	1' 11"	1' 4"
12" x 8"	45	0' 9"	1' 4"	3' 6"	1' 9"	2' 6"	1' 3"	2' 4"	1' 4"
16" x 8"	45	1' 0"	1' 8"	5' 4"	2' 8"	3' 0"	1' 6"	3' 0"	2' 6"
6" x 8"	22 1/2	0' 9"	1' 0"	2' 6"	1' 3"	2' 0"	1' 0"	2' 0"	1' 4"
12" x 8"	22 1/2	1' 0"	1' 8"	3' 4"	1' 8"	2' 6"	1' 3"	3' 0"	1' 2"

**DETAIL OF STANDARD THRUST BLOCKS FOR BENDS**  
No Scale



**TEMPLATE FOR SETTING TEES AT 11 1/2 & 2 1/2 ANGLES**  
No Scale



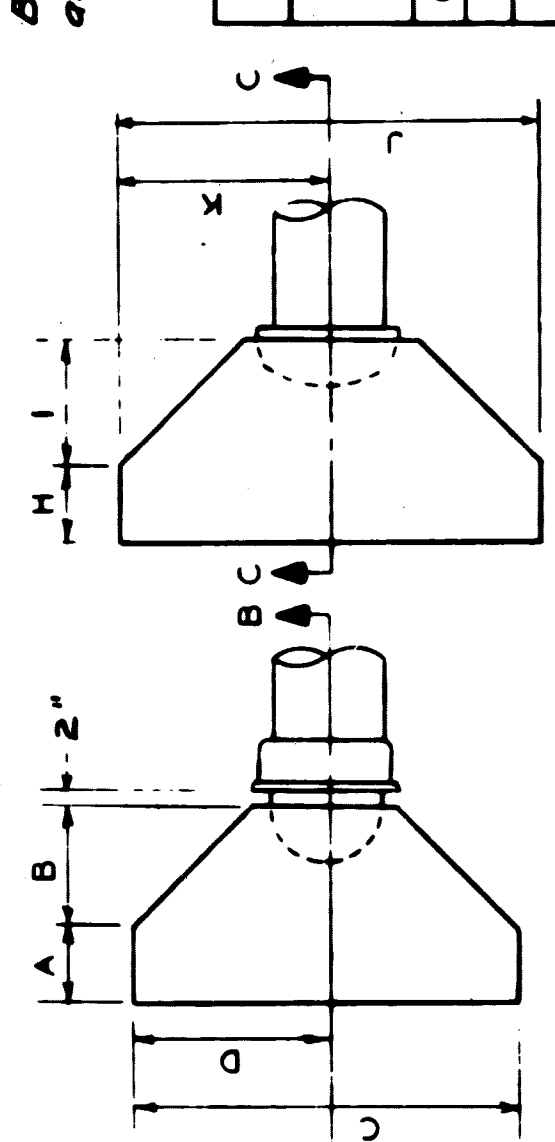
**THRUST BLOCK FOR 6" HYDRANT**  
No Scale

**SCHEDULE OF THRUST BLOCK DIMENSIONS**

TEE SIZE	CODE	H	I	J	K	L	M	N	P
6" x 8"	1' 0"	0' 9"	1' 0"	3' 0"	1' 6"	2' 0"	1' 0"	8' 2 1/2"	6' 0 1/2"
12" x 8"	1' 4"	0' 9"	1' 4"	4' 0"	2' 0"	3' 0"	1' 6"	12' 2 1/2"	12' 0 1/2"
16" x 8"	1' 8"	1' 0"	1' 8"	5' 0"	2' 6"	4' 0"	2' 0"	16' 3 1/2"	16' 0 1/2"

**DETAIL OF STANDARD THRUST BLOCKS FOR TEES**  
No Scale

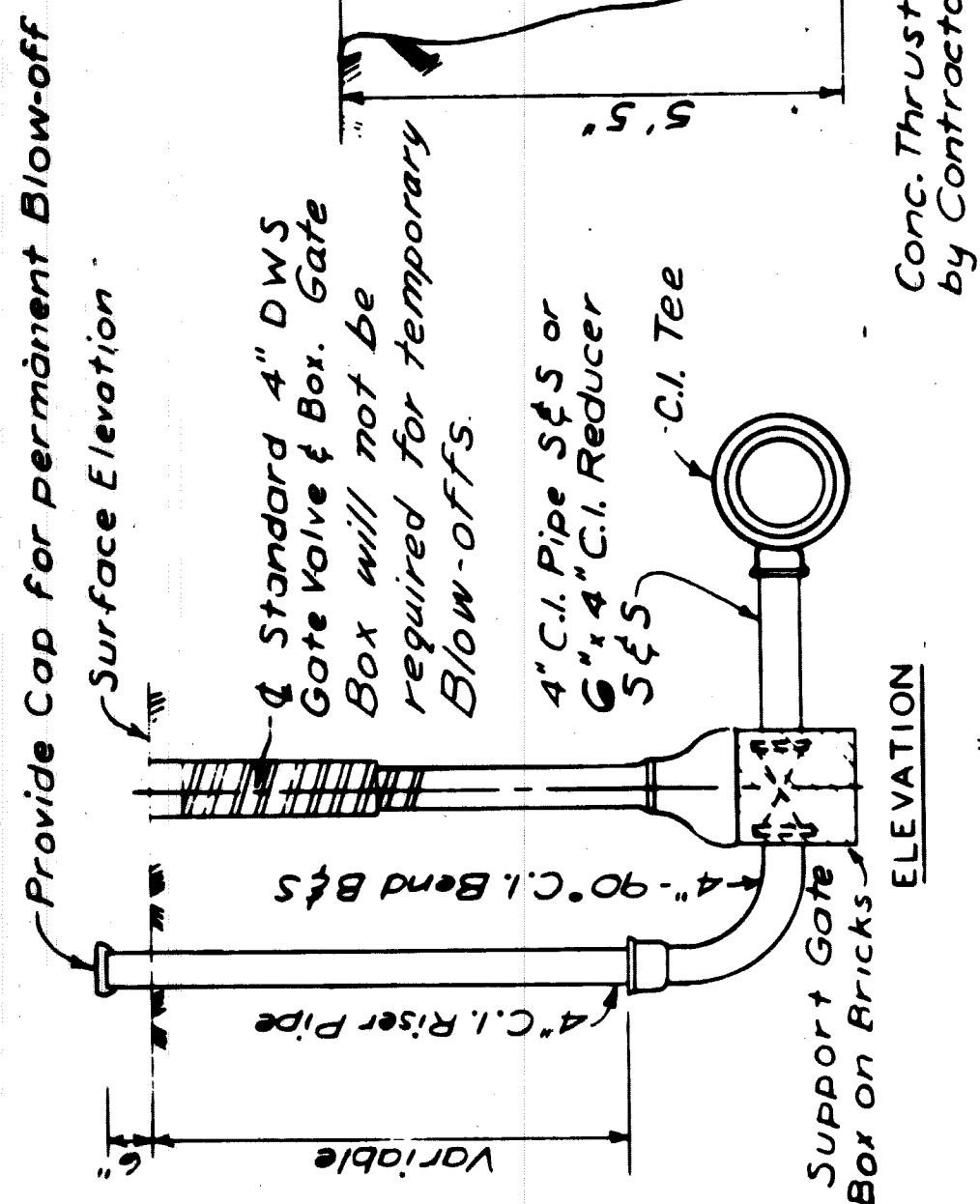
**NOTES**  
The bearing face of all thrust blocks shall be poured against undisturbed earth. Thrust blocks will be required on all C.I. Bends 6 inches in Diameter or larger and greater than 1 1/2.



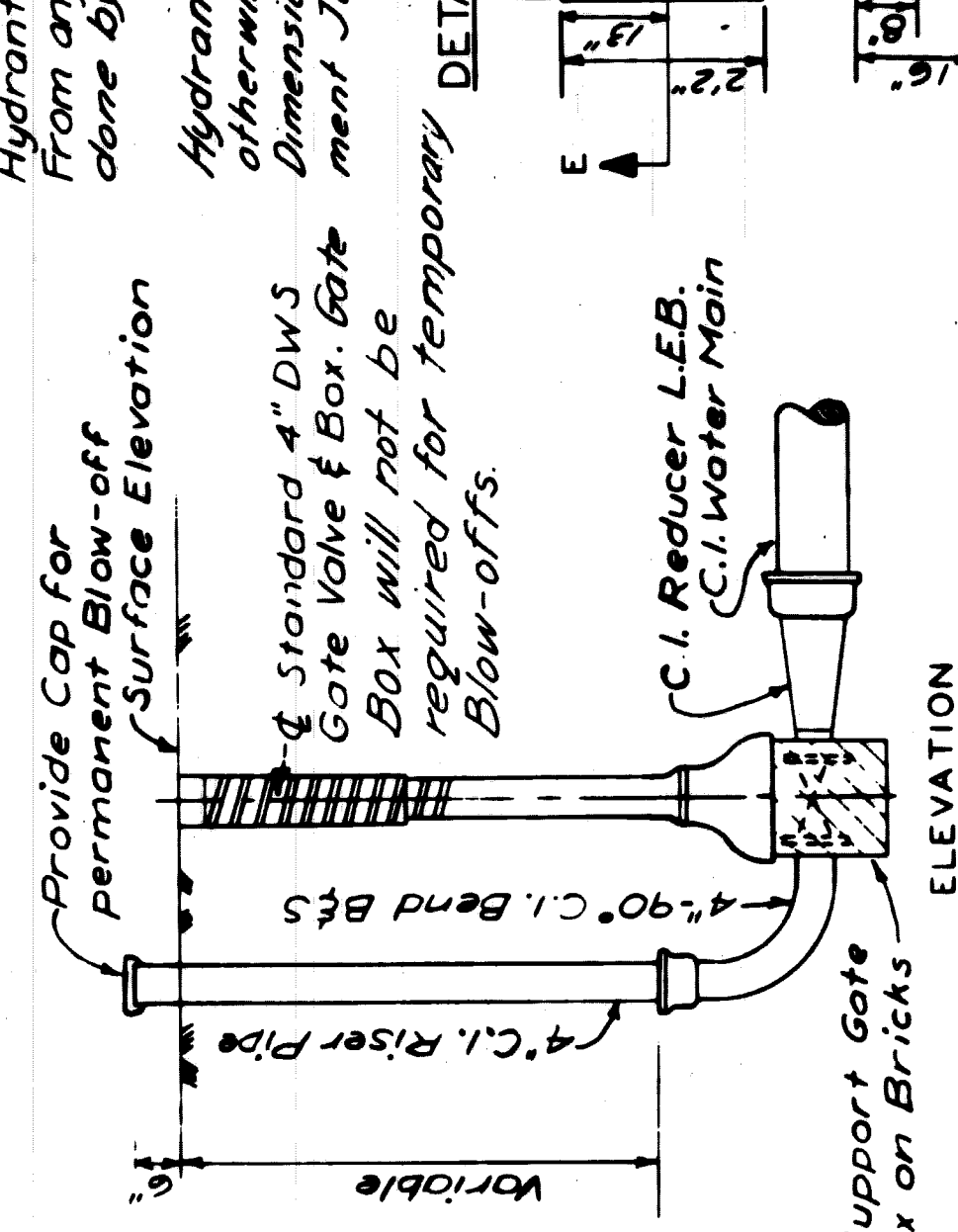
**SCHEDULE OF THRUST BLOCK DIMENSIONS FOR PLUGS & CAPS**  
No Scale

PLUG SIZE	CODE	A	B	C	D	E	F	G
6" x 8"	0' 9"	1' 2"	3' 0"	1' 6"	2' 0"	1' 0"	1' 11"	1' 1"
12"	0' 9"	1' 4"	4' 0"	2' 0"	3' 0"	1' 6"	2' 1"	2' 1"
16"	1' 0"	1' 8"	5' 0"	2' 6"	4' 0"	2' 0"	2' 8"	2' 8"

**DETAIL OF STANDARD THRUST BLOCKS FOR PLUGS & CAPS**  
No Scale

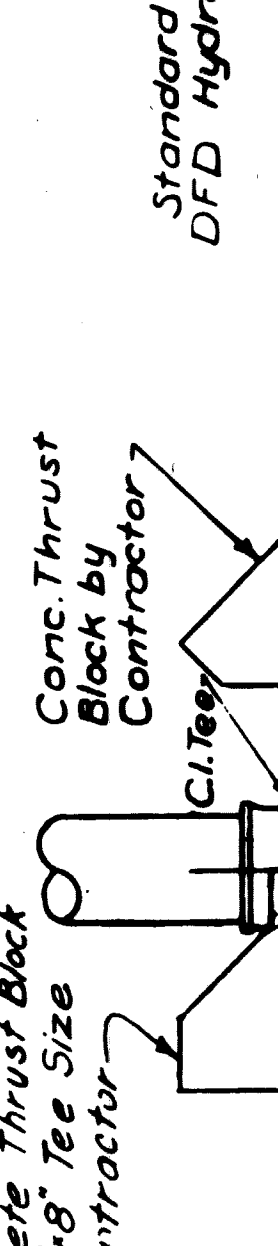


**DETAIL OF 4" C.I. BLOW-OFF**  
No Scale

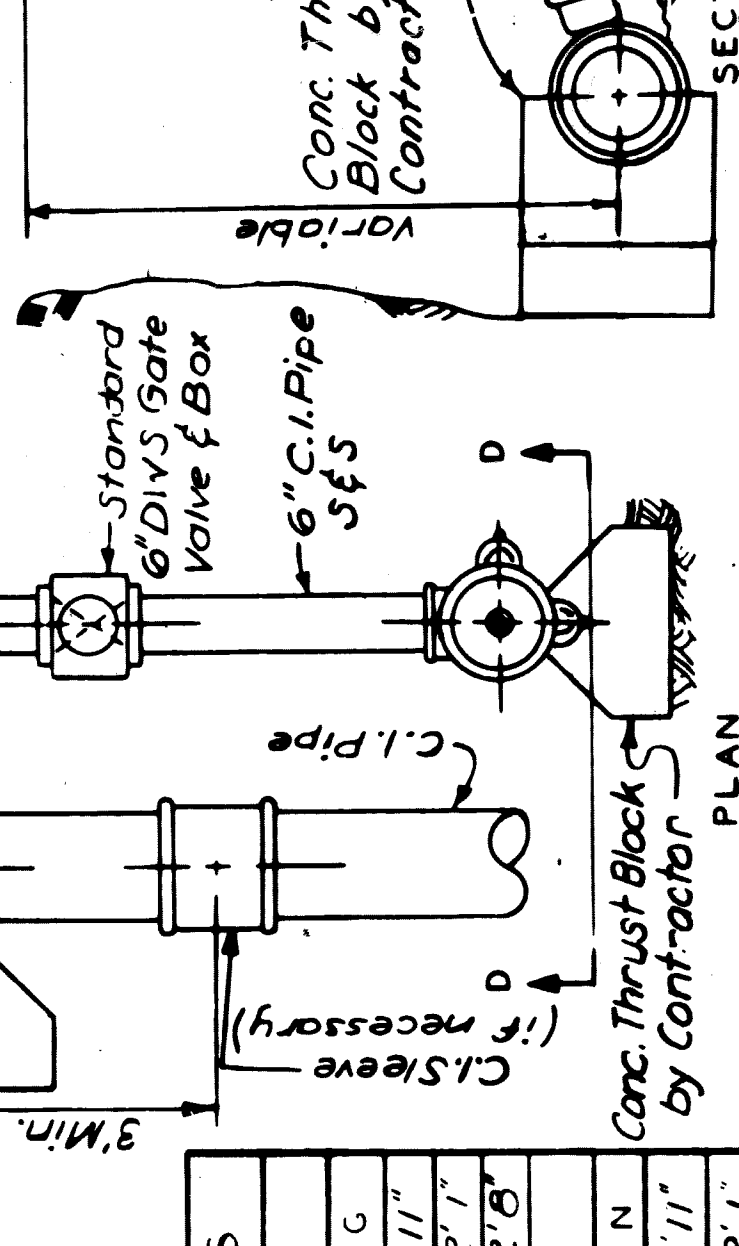


**DETAIL OF 4" C.I. BLOW-OFF**  
No Scale

**THRUST BLOCK FOR 6" HYDRANT BEND**  
No Scale



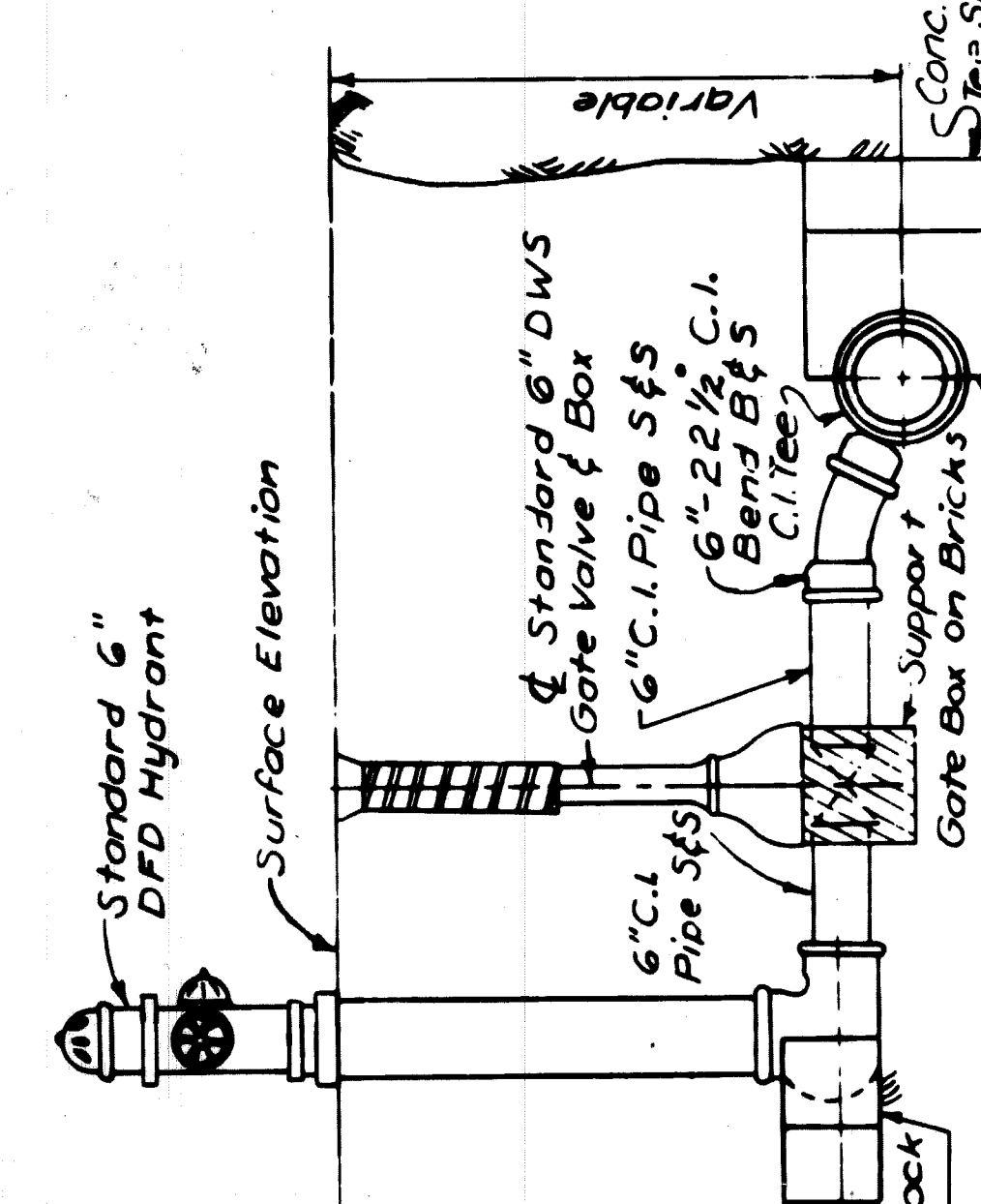
**DETAIL OF 6" HYDRANT INSTALLATION**  
No Scale



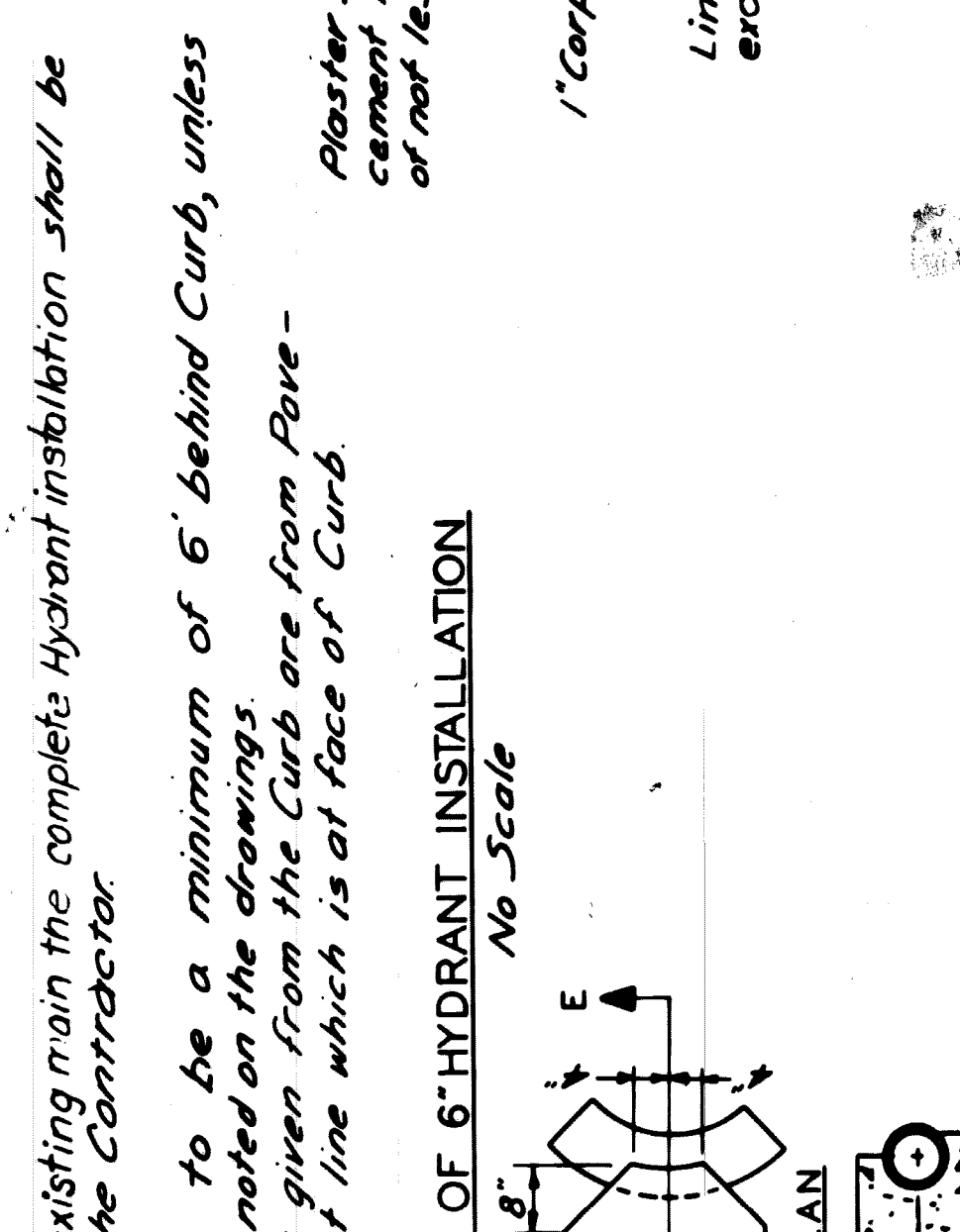
**THRUST BLOCK FOR 6" HYDRANT BEND**  
No Scale

From the new main the Contractor shall install the Tee, 6" 22 1/2 C.I. Bend S.f.S., 6" C.I. Pipe, 6" D.W.S. Gate Valve & Box, 6" C.I. Pipe, Concrete Thrust Blocks, and Hydrant. From any existing main the complete Hydrant installation shall be done by the Contractor.

Hydrants to be a minimum of 6' behind the Curb, unless otherwise shown on the drawings. Dimensions given from Curb are from Pavement Joint line which is at face of Curb.

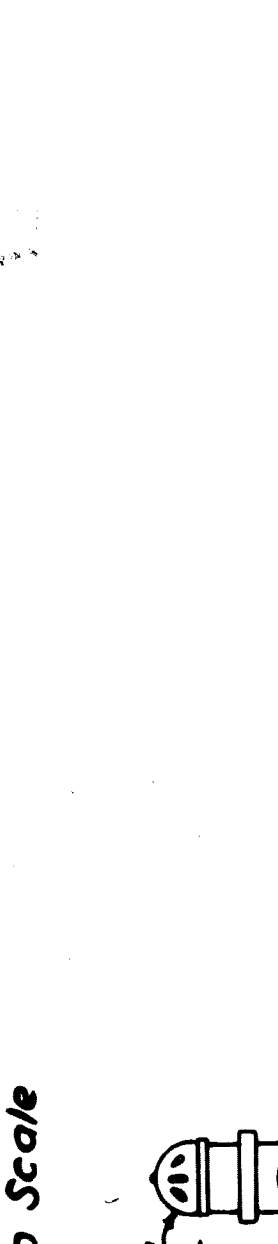


**DETAIL OF 6" HYDRANT INSTALLATION**  
No Scale

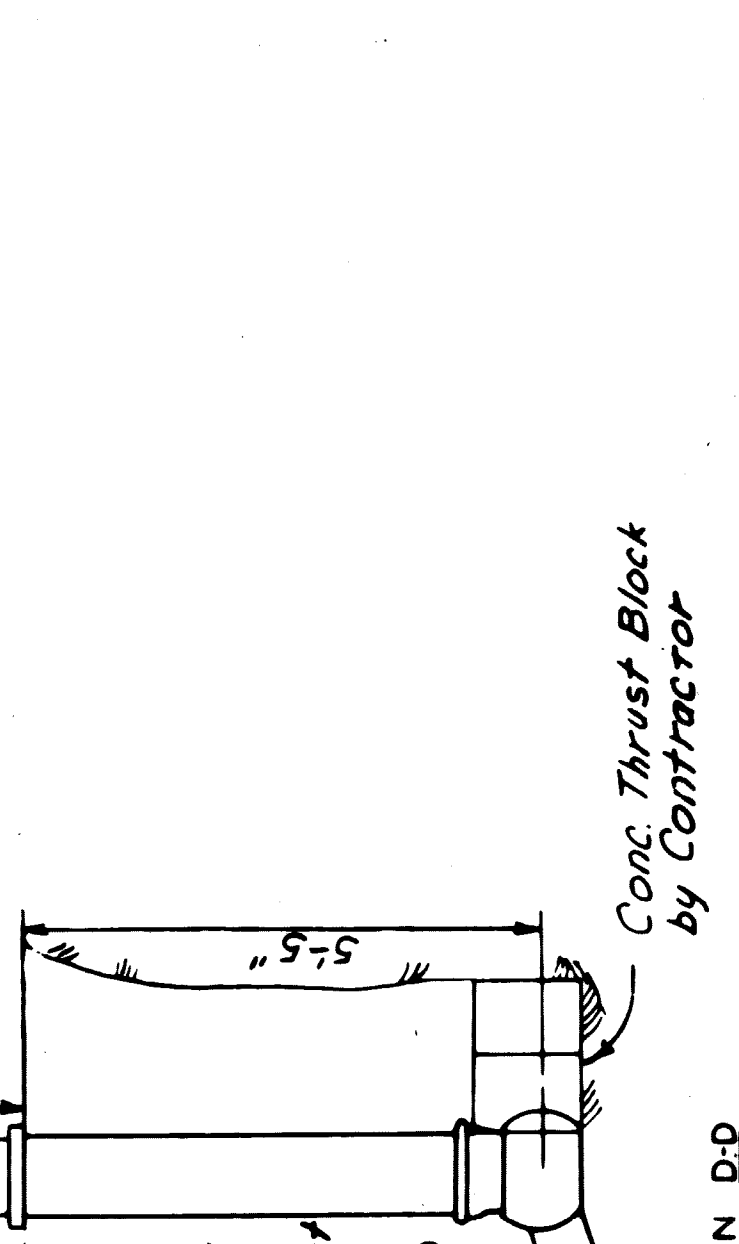


**DETAIL OF 6" HYDRANT INSTALLATION**  
No Scale

**THRUST BLOCK FOR 6" HYDRANT BEND**  
No Scale



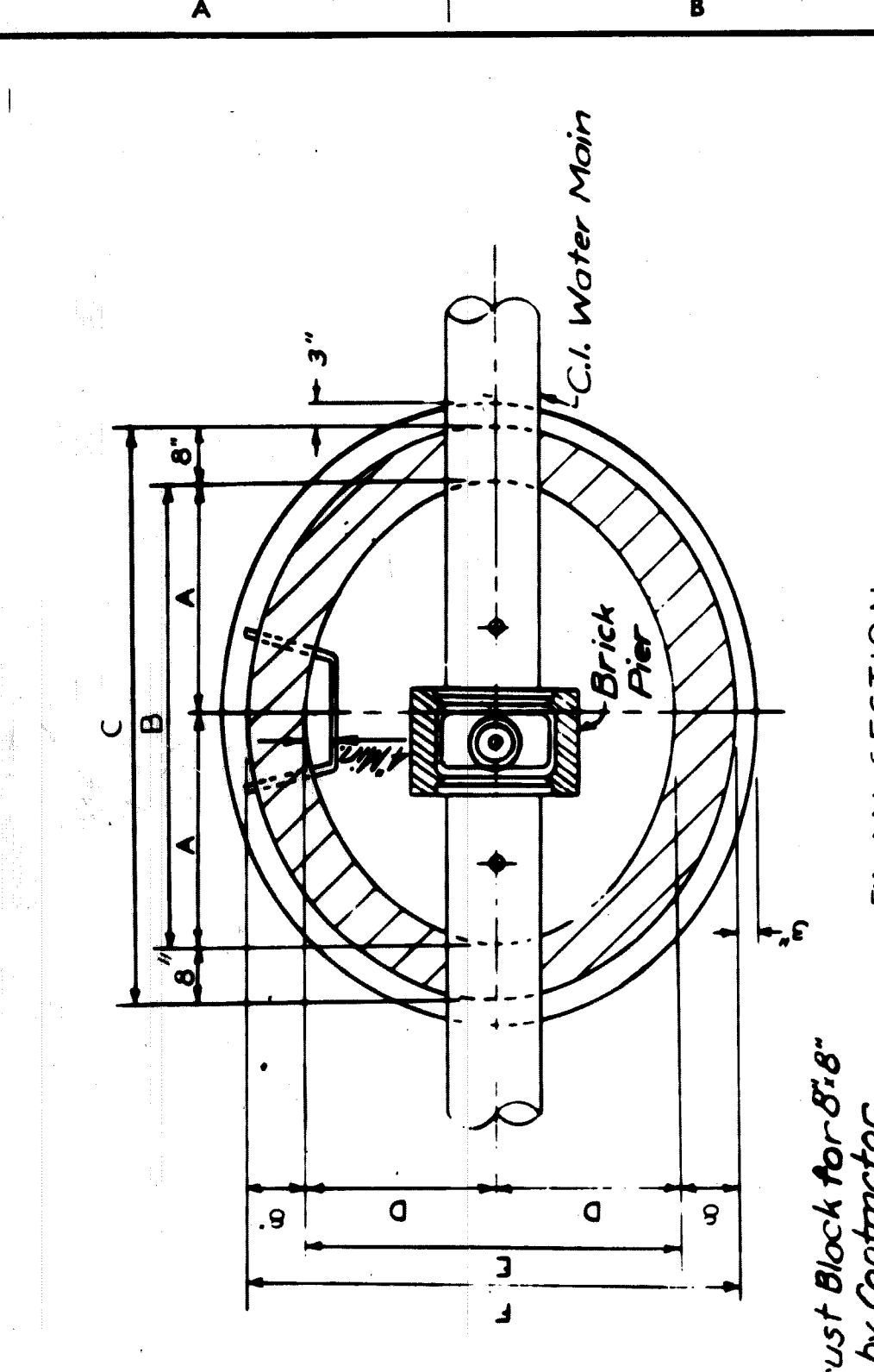
**DETAIL OF 6" HYDRANT INSTALLATION**  
No Scale



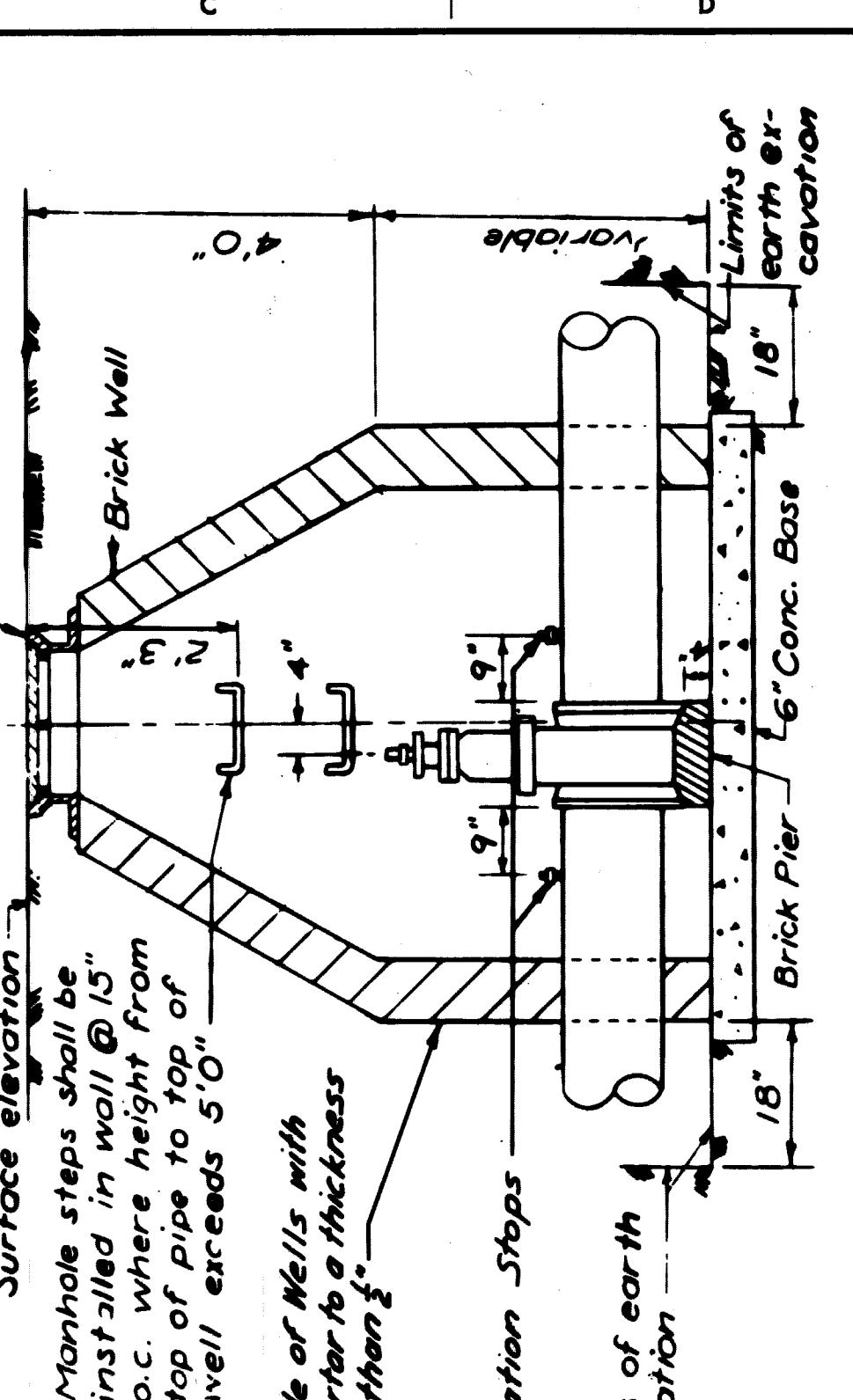
**THRUST BLOCK FOR 6" HYDRANT BEND**  
No Scale

From the new main the Contractor shall install the Tee, 6" 22 1/2 C.I. Bend S.f.S., 6" C.I. Pipe, 6" D.W.S. Gate Valve & Box, 6" C.I. Pipe, Concrete Thrust Blocks, and Hydrant. From any existing main the complete Hydrant installation shall be done by the Contractor.

Hydrants to be a minimum of 6' behind the Curb, unless otherwise shown on the drawings. Dimensions given from Curb are from Pavement Joint line which is at face of Curb.



**PLAN SECTION**



**SECTION THROUGH GATE WELL**

**SCHEDULE OF GATE WELL DIMENSIONS**

SIZE	A	B	C	D	E	F
6"	2' 6"	5' 0"	6' 4"	2' 0"	4' 0"	5' 4"
8"	2' 6"	5' 0"	6' 4"	2' 0"	4' 0"	5' 4"
12"	2' 9"	5' 6"	6' 10"	2' 3"	4' 6"	5' 10"
16"	3' 0"	6' 0"	7' 4"	2' 9"	5' 6"	6' 10"

**DETAIL OF STANDARD GATE WELLS**  
No Scale

**DETROIT METRO WATER DEPARTMENT**  
WATER SYSTEM  
JOB NO. D-982-1  
DRAWING NO. 14 OF 14  
EGB-1  
T4000(3)

**EAST GRAND BOULEVARD OVER GRAND TRUNK RAILROAD GRADE SEPARATION-WATER MAIN ALTERATIONS**  
MISCELLANEOUS DETAILS  
SHEET NO. 15

**CITY OF DETROIT**  
DEPARTMENT OF PUBLIC WORKS  
CITY ENGINEERS OFFICE  
APPROVED: [Signature]  
DESIGNED BY: [Signature]  
DRAWN BY: [Signature]  
TRACED BY: [Signature]  
CHECKED BY: [Signature]