

CITY OF DETROIT
DEPARTMENT OF PUBLIC WORKS
 IN CO-OPERATION WITH
MICHIGAN DEPARTMENT OF TRANSPORTATION
 AND
FEDERAL HIGHWAY ADMINISTRATION
 FEDERAL AID URBAN PROJECT NO. MICHIGAN M 2000 (206)
 CONTROL SECTION MU 82400 JOB NO. 19333A

INDEX OF SHEETS

- 1 TITLE SHEET
- 2-3 TYPICAL CROSS-SECTIONS
- 4 CONSTRUCTION SEQUENCE
- 5-7 ALIGNMENT
- 8 REMOVALS
- 9 PLANS & PROFILES
- 10-15 DRAINAGE STRUCTURE TABLE
- 17-22 DETAILED GRADES
- 23-24 UTILITIES
- 25-27 LANDSCAPE PLANS
- 28 WALL REMOVALS
- 29-31 WATER SYSTEM ALTERATIONS
- 32-36 SPECIAL DETAILS & STANDARDS
- 37-38 QUANTITIES

ELECTRICAL

- 39 ELECTRICAL LEGEND
- 40 GENERAL INFORMATION
- 41-42 GENERAL PLANS
- 43-49 WIRING DIAGRAMS
- 50-52 TRAFFIC SIGNALS
- 53-54 QUANTITIES
- 55-79 ELECTRICAL DETAILS

STANDARD PLANS

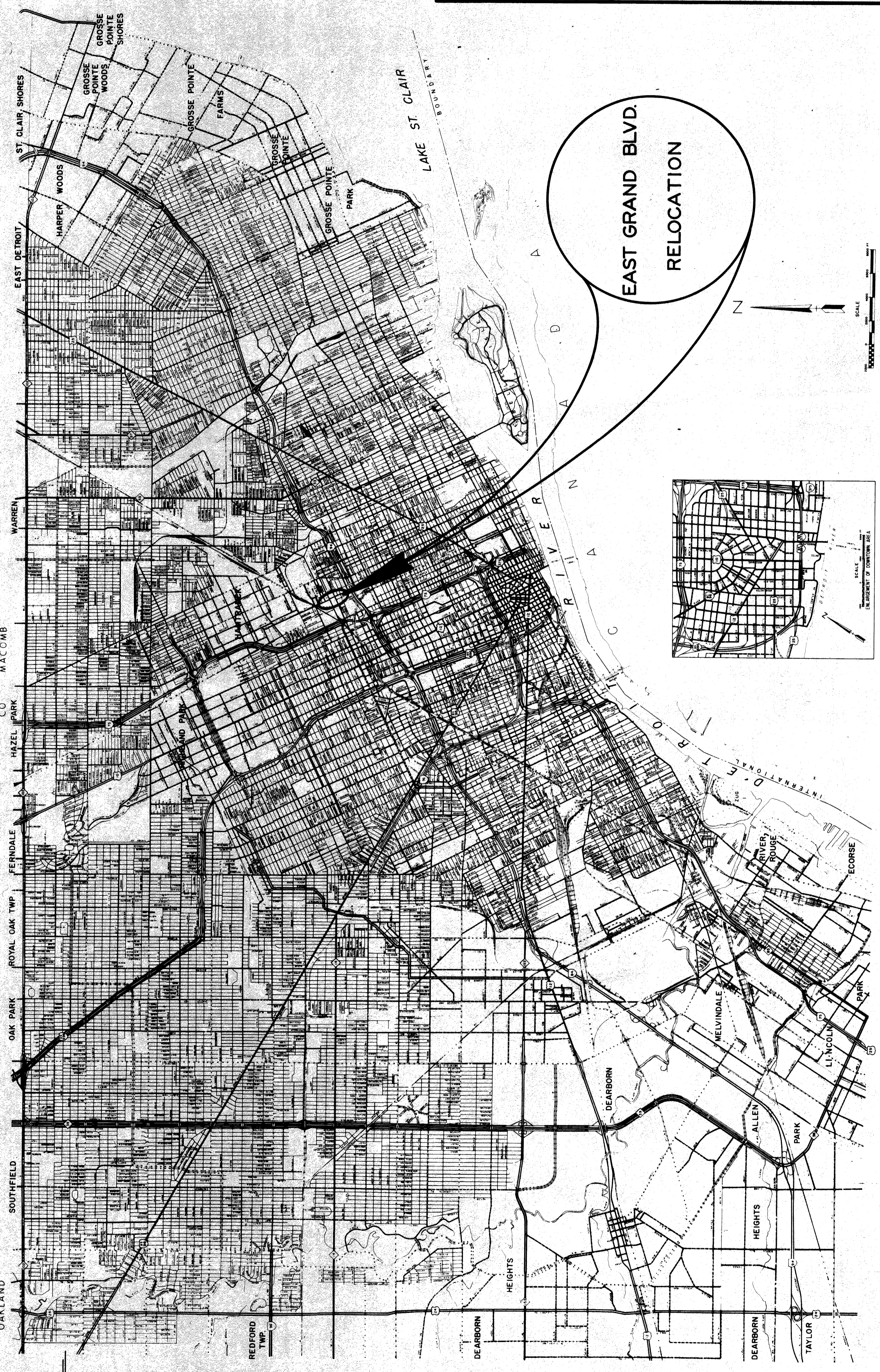
- II 28F II 41D II 60E
- II 29C II 42C II 84B
- II 39G II 43C II 100A
- II 40D II 45C II 125E

THE IMPROVEMENTS COVERED BY THESE PLANS SHALL BE DONE IN ACCORDANCE WITH THE MICHIGAN DEPARTMENT OF TRANSPORTATION CURRENT STANDARD SPECIFICATIONS AND SUPPLEMENTAL SPECIFICATIONS.

FHWA REGION	STATE	PROJECT NO.	FISCAL YEAR	SHEET NO.	TOTAL SHEETS
5	MICH.				
STREET	CITY	COUNTY	TWP	SHEET NO.	TOTAL SHEETS

9480	5624	6054
E. GRAND BLVD.		RING RD.
8608	5140	5610

PROJECTED TRAFFIC VOLUMES (ADT)



ITEM NO. 867

CONTRACT FOR **G, D, S, P, & UTILITIES**

LOCAL AUTHORITY APPROVAL
 CITY OF DETROIT
 CITY ENGINEERING DIVISION
 DEPARTMENT OF PUBLIC WORKS

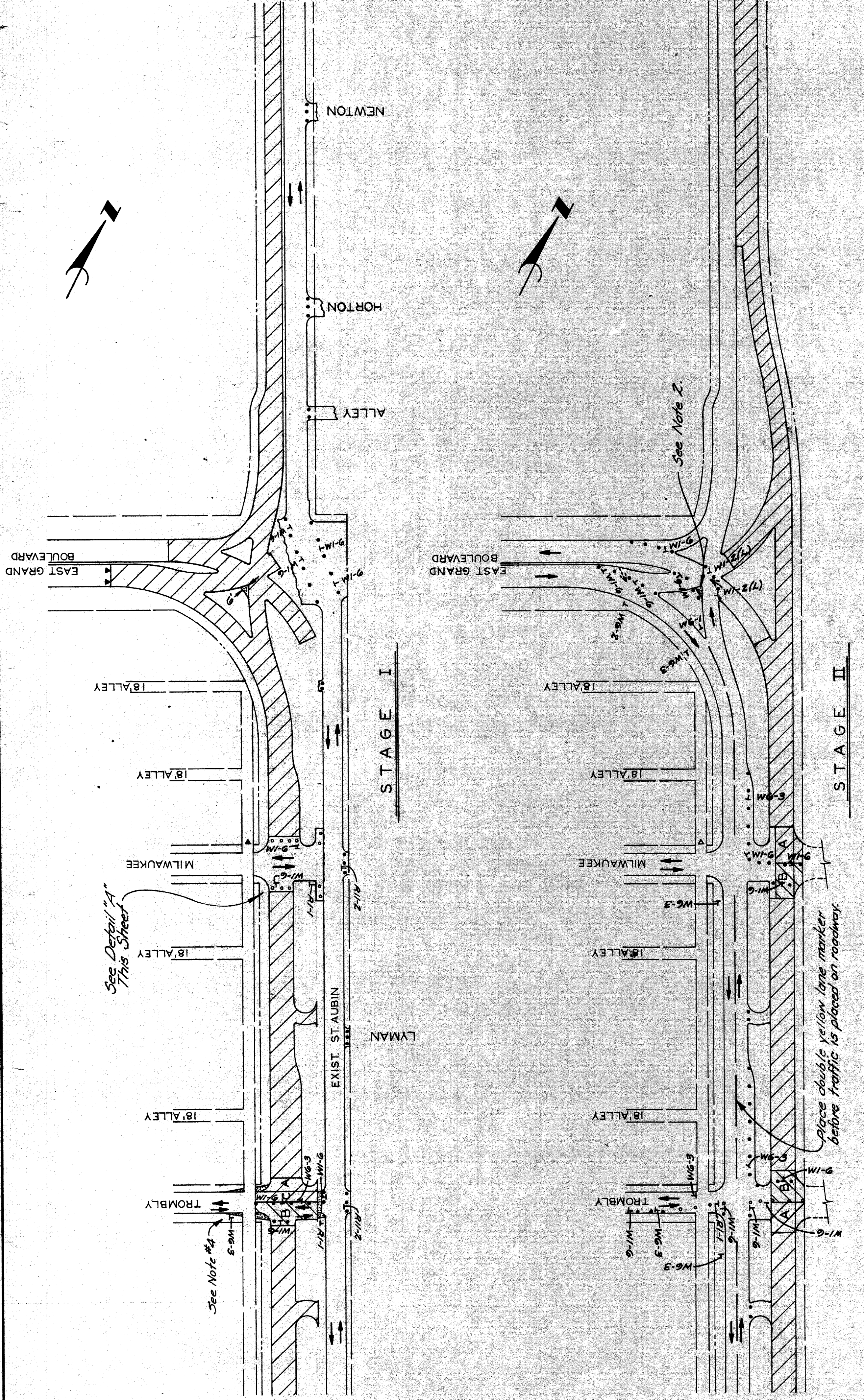
APPROVED BY *[Signature]* ASSISTANT CITY ENGINEER DATE *11/1/52*

APPROVED BY *[Signature]* CITY ENGINEER DATE *11/1/52*

PREPARED UNDER SUPERVISION OF
[Signature] REGISTERED PROFESSIONAL ENGINEER REGISTRATION NO. *09261*

CITY OF DETROIT
 ORGANIZATION
 DETROIT, MICHIGAN
 ADDRESS

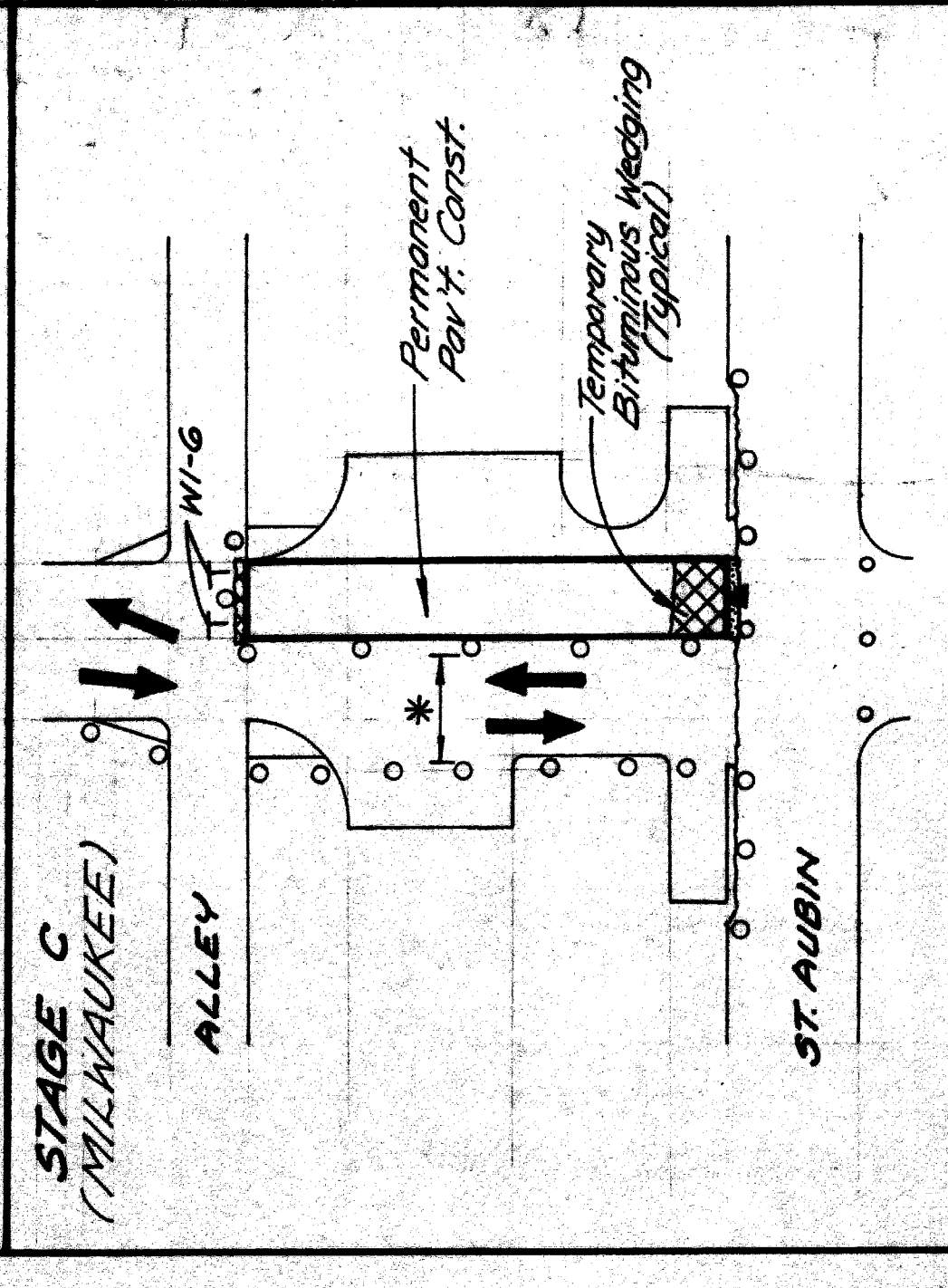
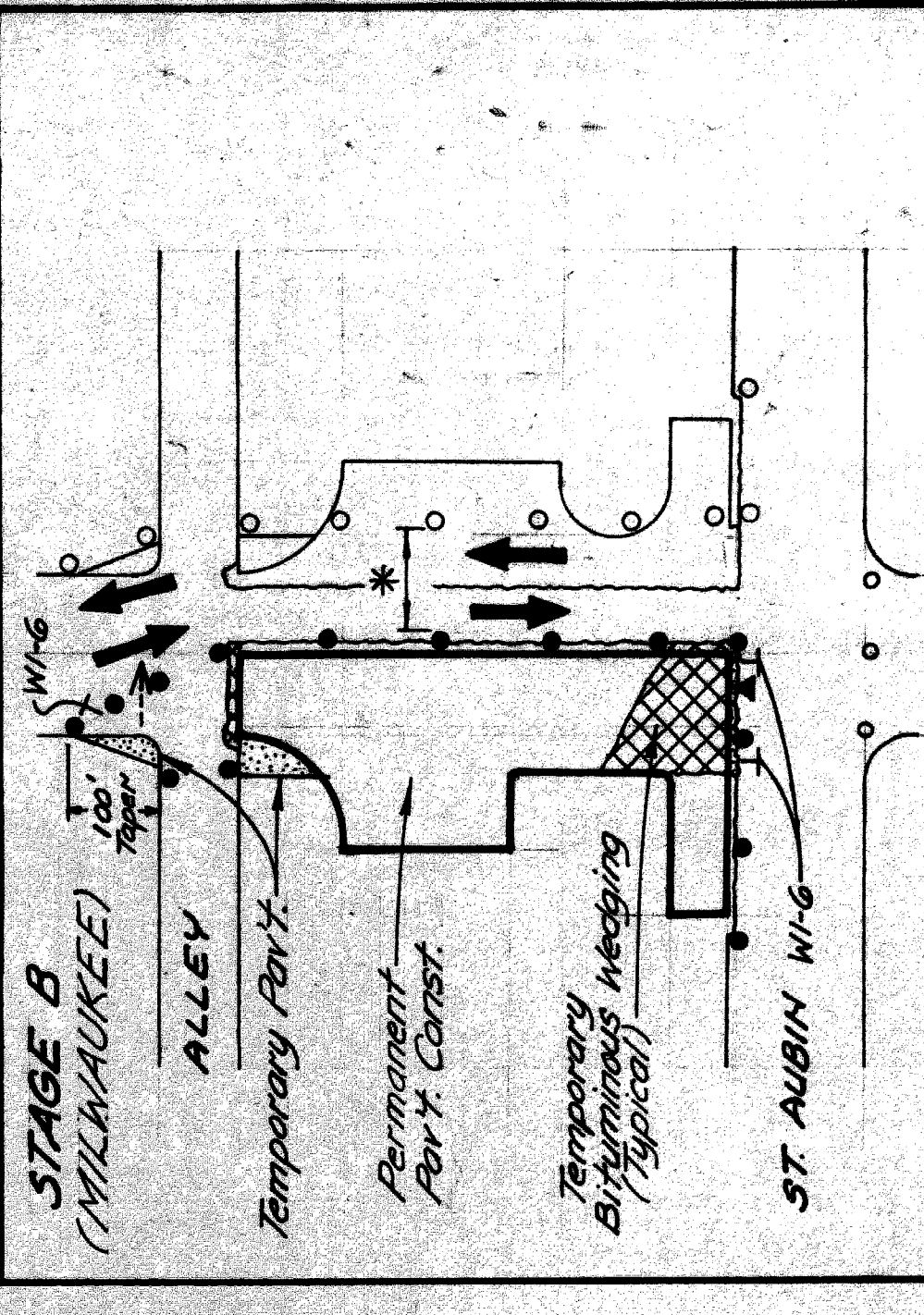
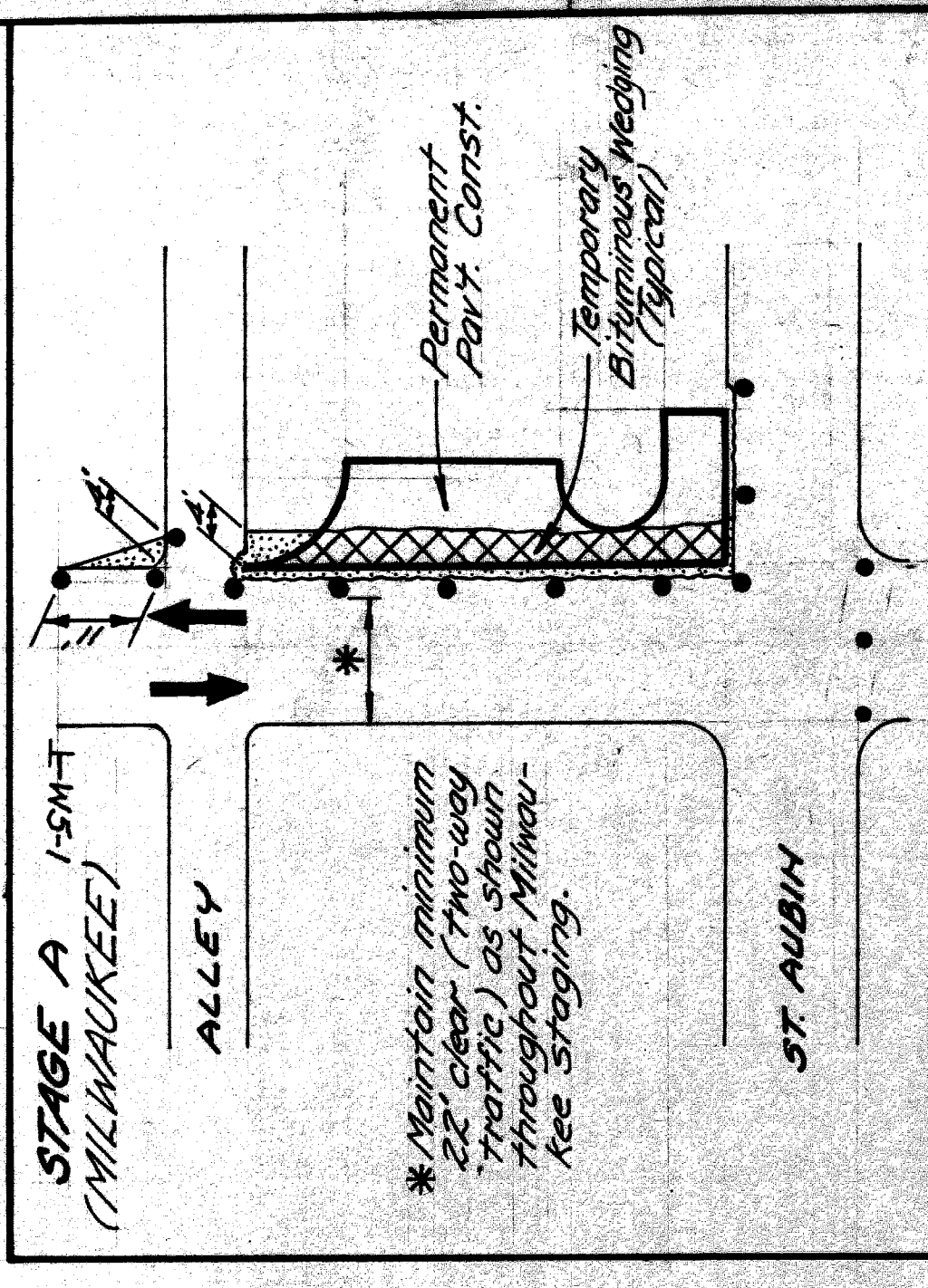
(SEAL)
 ALLEN E. PRAGER
 ENGINEER
 NO. 09261



SCALE: 1" = 100'

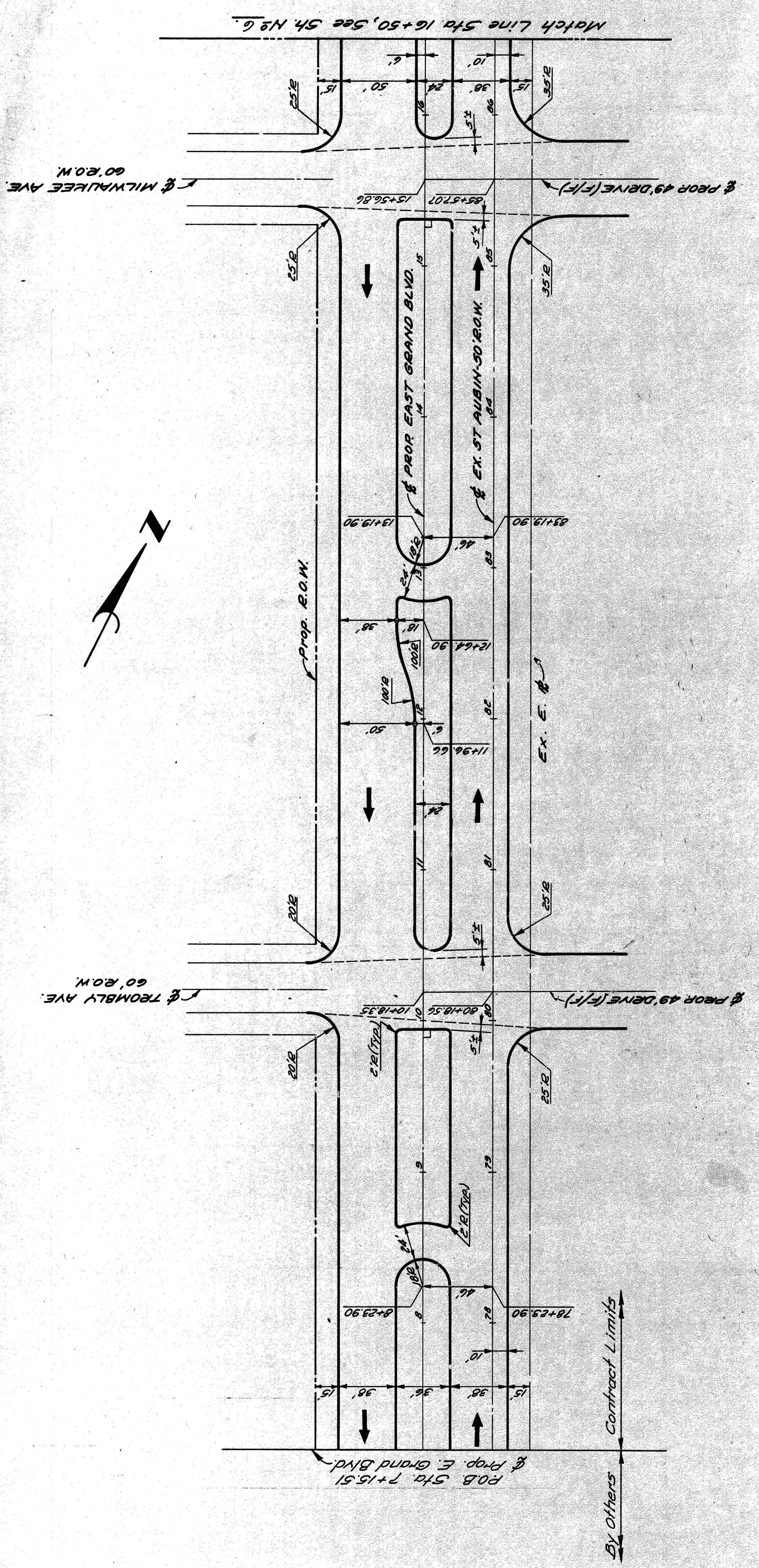
NOTES:
 1. Construct Milwaukee intersection (Detail 'A' shown at right) prior to taking traffic off of existing East Grand Boulevard in Stage I (above).
 2. See Proposal for additional Detour Roadways and Sign-ing around the Construction Area.
 3. After completing Stage II (above), and switching traffic to 115' limit, permanent location, remove the temporary pavement and construct the curb. Shape Trobly similar to the Milwaukee Staging - (Detail 'A' this sheet).

- LEGEND**
- Permanent Pavt. Construction (Sub-Stage I)
 - Permanent Pavt. Construction (Sub-Stage II)
 - Temporary Concrete Pavt. - Nonreinforced
 - Sign, Type B, Temporary
 - Barricade, Type II, Lighted
 - Barricade, Type II, Lighted (Placed Previously)
 - Barricade, Type III, Lighted
 - Barricade, Type III, Lighted (Placed Previously)
 - Lighted Arrow, Type "A"



DETAIL 'A'
 MILWAUKEE STAGING

CITY OF DETROIT CITY ENGINEERING DIVISION - D.P.W. BUREAU OF STREETS AND HIGHWAYS		EAST GRAND BOULEVARD RELOCATION CONSTRUCTION SEQUENCE		SHEET 4 OF 19 SHEETS CONTRACT NO. 19339 A ASSIGNMENT NO. DATE Jan, 1982
APPROVED: [Signature]	DESIGNED BY: [Signature]	DRAWN BY: [Signature]	TRACED BY: [Signature]	CHECKED BY: [Signature]
REVISIONS LOCATED BY COORDINATES ON SHEET	REFERENCE DRAWINGS	DESCRIPTION	DATE	APPROVED DATE



SCALE: 1" = 40'
SHEET 5 OF 79 SHEETS
CONTRACT NO. 19333-9
ASSIGNMENT NO.
DATE Jan., 1982

EAST GRAND BOULEVARD RELOCATION
ALIGNMENT

CITY OF DETROIT
CITY ENGINEERING DIVISION - D.P.W.
BUREAU OF STREETS AND HIGHWAYS

APPROVED:
ENGINEER OF STREETS
HIGHWAY ENGINEER
Allen Pagan

DESIGNED BY
DRAWN BY *MMR*
TRACED BY
CHECKED BY *RP/WB*

NO.	DESCRIPTION	DATE

11 10 9 8 7 6 5 4 3 2 1

TELEPHONE POST NUMBER

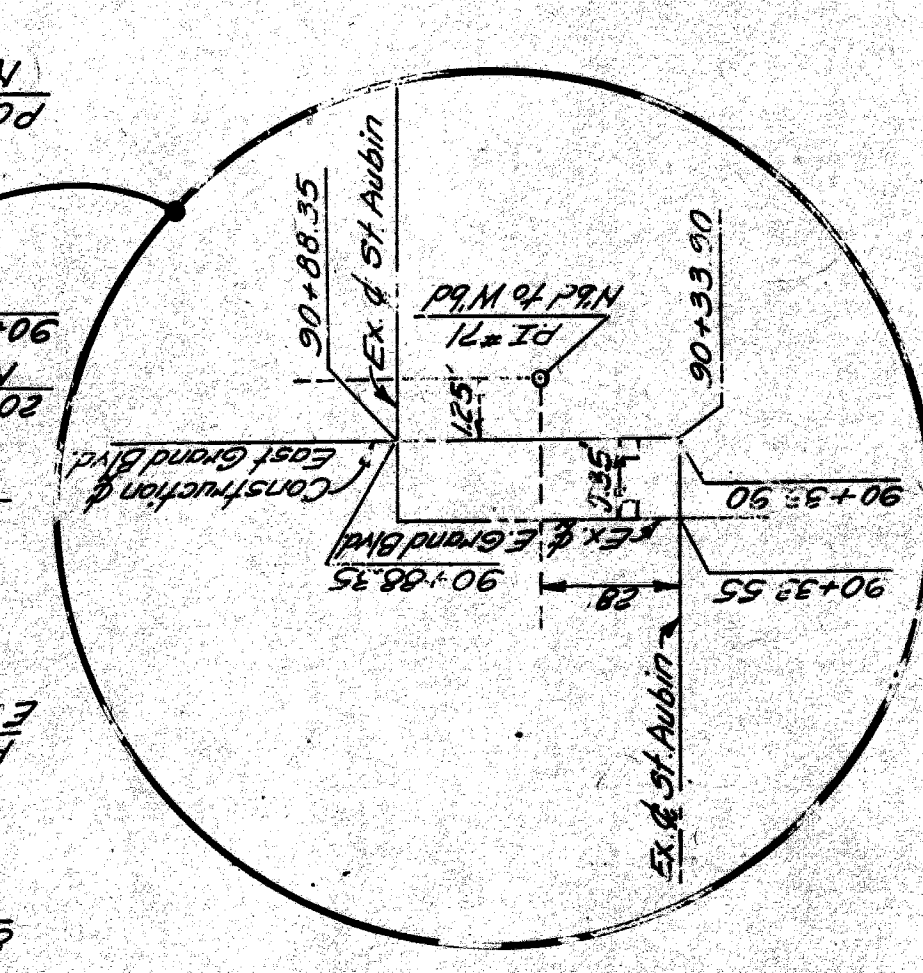
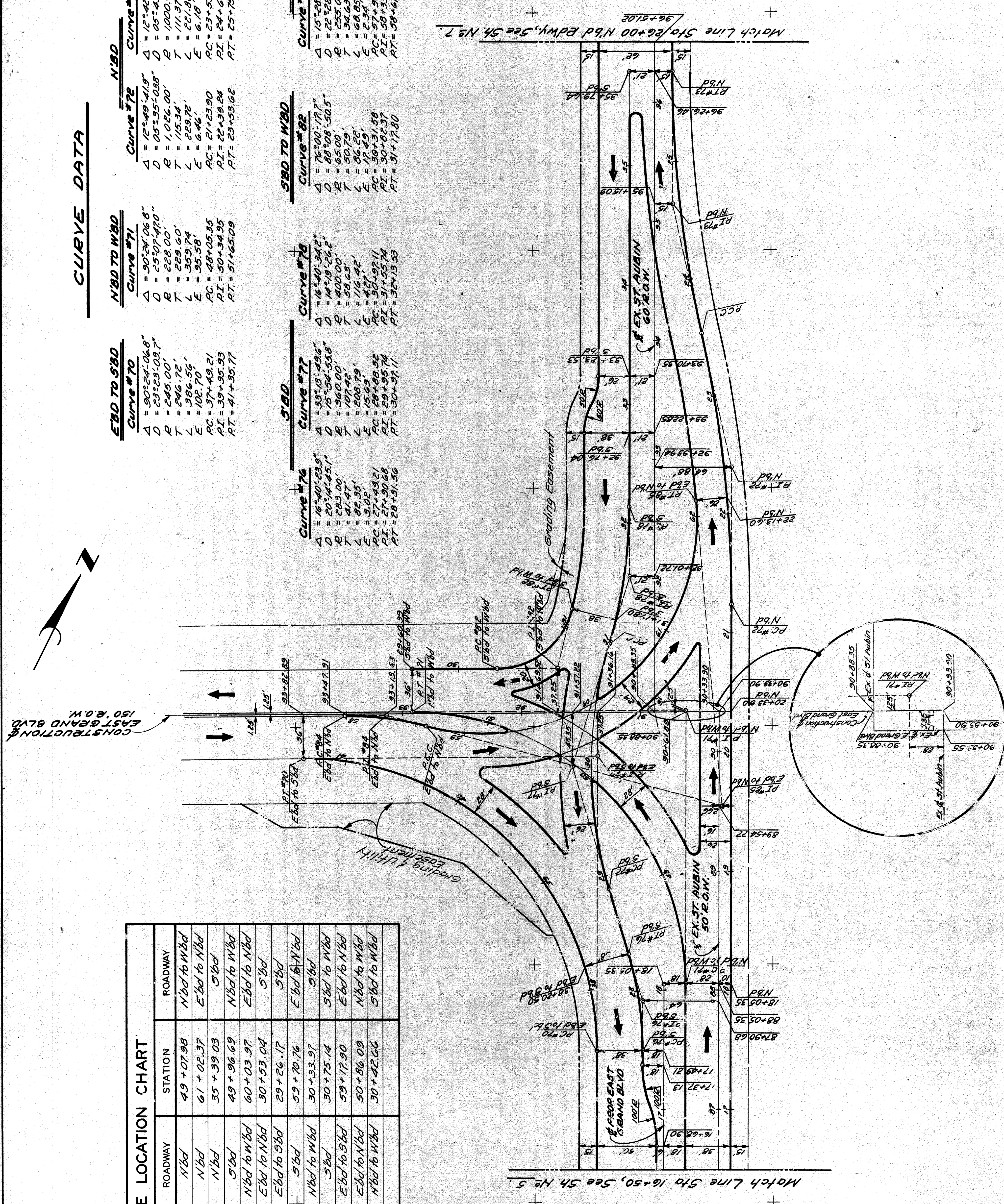
CURVE DATA

Curve #70	Curve #71	Curve #72	Curve #73
Δ = 90°24'06.8"	Δ = 90°37'06.8"	Δ = 18°49'41.9"	Δ = 18°49'41.9"
D = 23°29'02.7"	D = 25°07'47.0"	D = 05°55'03.8"	D = 05°55'03.8"
R = 245.00'	R = 228.00'	R = 1000.00'	R = 1000.00'
T = 246.72'	T = 229.60'	T = 111.37'	T = 111.37'
L = 386.56'	L = 359.74'	L = 229.72'	L = 229.72'
E = 102.70'	E = 95.58'	E = 6.18'	E = 6.18'
PC = 37+40.21	PC = 48+05.35	PC = 21+23.90	PC = 23+53.62
PI = 39+95.93	PI = 50+34.95	PI = 24+64.99	PI = 24+64.99
PT = 41+35.77	PT = 51+65.09	PT = 23+53.62	PT = 25+75.44

Curve #76	Curve #77	Curve #78	Curve #82	Curve #84	Curve #85
Δ = 16°40'23.9"	Δ = 33°15'49.6"	Δ = 16°40'34.2"	Δ = 76°00'17.7"	Δ = 15°28'06.7"	Δ = 110°04'33.4"
D = 20°14'45.1"	D = 15°54'53.8"	D = 14°19'26.2"	D = 88°28'50.5"	D = 22°28'08.2"	D = 31°49'57.6"
R = 283.00'	R = 360.00'	R = 400.00'	R = 65.00'	R = 255.00'	R = 180.00'
T = 41.47'	T = 107.42'	T = 58.23'	T = 50.79'	T = 34.63'	T = 257.43'
L = 82.35'	L = 208.79'	L = 116.42'	L = 86.22'	L = 68.85'	L = 345.81'
E = 3.02'	E = 15.69'	E = 4.87'	E = 17.49'	E = 2.34'	E = 154.12'
PC = 27+43.21	PC = 28+88.92	PC = 30+92.11	PC = 30+31.58	PC = 57+38.94	PC = 58+67.29
PI = 29+95.74	PI = 29+95.74	PI = 31+55.74	PI = 30+82.37	PI = 58+33.57	PI = 61+25.22
PT = 28+31.56	PT = 30+92.11	PT = 32+13.53	PT = 31+17.80	PT = 58+67.29	PT = 62+13.60

NOSE LOCATION CHART


RADIUS	STATION	ROADWAY	STATION	ROADWAY
5'	19+18.91	N'bd	49+07.98	N'bd to W'bd
2'	20+89.24	N'bd	61+02.37	E'bd to N'bd
5.4'	25+36.05	N'bd	35+39.03	S'bd
2'	29+78.45	S'bd	49+96.69	N'bd to W'bd
2'	50+15.04	N'bd to W'bd	60+03.97	E'bd to N'bd
2'	60+21.00	E'bd to N'bd	30+53.04	S'bd
2'	39+09.28	E'bd to S'bd	29+26.17	S'bd
2'	29+99.94	S'bd	59+70.76	E'bd to N'bd
2'	50+50.00	N'bd to W'bd	30+33.97	S'bd
5'	30+64.10	S'bd	30+75.14	S'bd to W'bd
5'	39+93.21	E'bd to S'bd	59+17.90	E'bd to N'bd
2'	59+33.74	E'bd to N'bd	50+86.09	N'bd to W'bd
2'	30+87.65	N'bd to W'bd	30+42.66	S'bd to W'bd

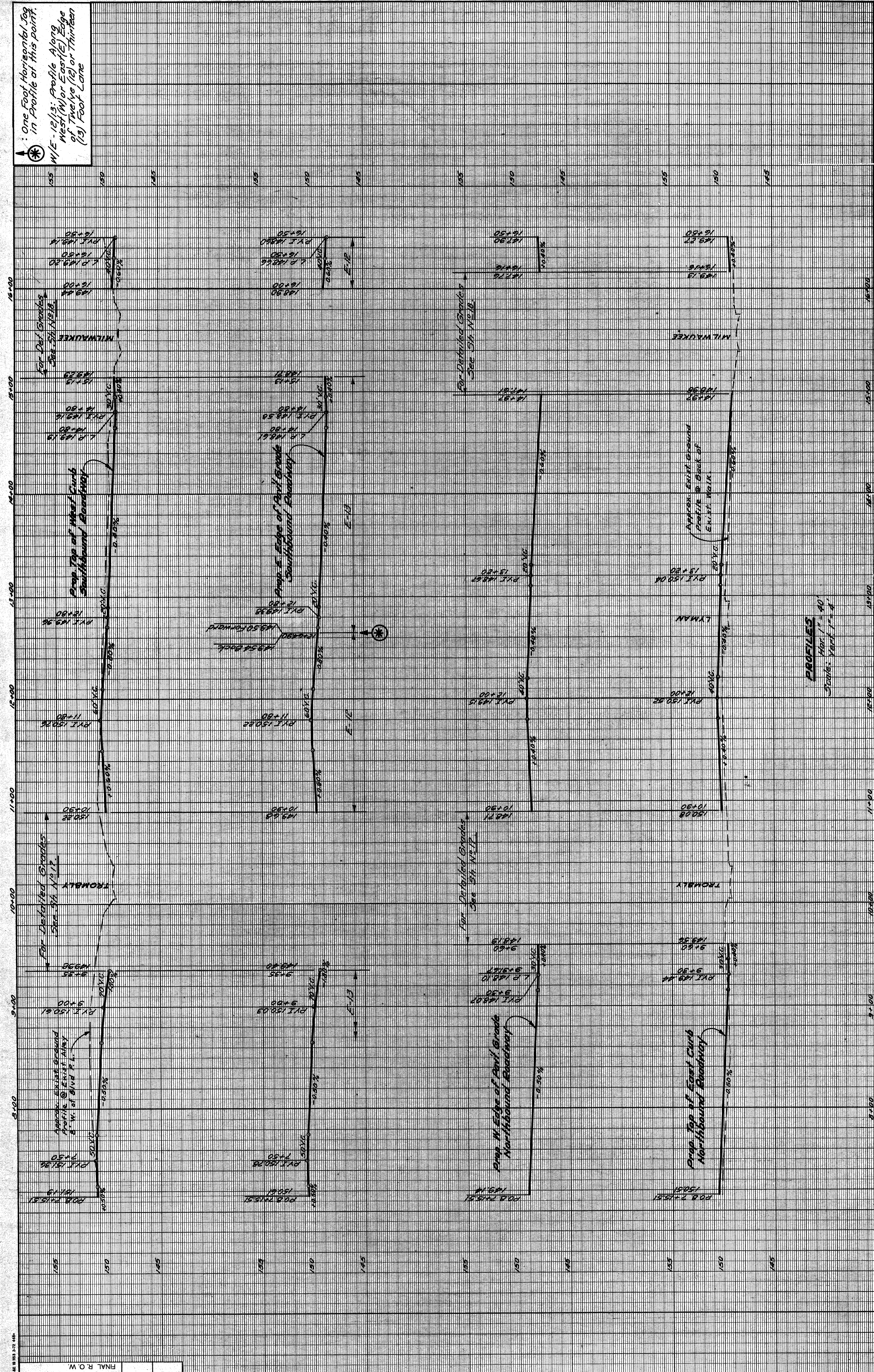


<p>SCALE: 1" = 40'</p>	
<p>SHEET 6 OF 79 SHEETS</p>	
<p>CONTRACT NO. 19333A</p>	
<p>ASSIGNMENT NO.</p>	
<p>DATE Jan, 1982</p>	
<p>EAST GRAND BOULEVARD RELOCATION</p>	
<p>ALIGNMENT</p>	
<p>STA. 16+50 TO STA. 62+00</p>	
<p>CITY OF DETROIT</p>	
<p>CITY ENGINEERING DIVISION - D. P. W.</p>	
<p>BUREAU OF STREETS AND HIGHWAYS</p>	
<p>FOR</p>	
<p>DESIGNED BY</p>	<p>MMB</p>
<p>DRAWN BY</p>	<p>MMB</p>
<p>TRACED BY</p>	<p>MMB</p>
<p>CHECKED BY</p>	<p>MMB</p>
<p>APPROVED:</p>	<p><i>Allen Ragan</i> HIGHWAY ENGINEER</p>
<p>REFERENCE DRAWINGS</p>	<p></p>
<p>DESCRIPTION</p>	<p>DN CKD (A) (D) DATE</p>
<p>REVISIONS LOCATED BY COORDINATES ON SHEET</p>	<p></p>

ME 10 303 374 448

FINAL P.O.W.

 : One Foot Horizontal To 10 Feet Vertical in Profile at this point.
 W/E - 12/13: Profile Along West (W) or East (E) Edge of Twelve (12) or Thirteen (13) Foot Lane



SHEET **11** OF **19** SHEETS
 CONTRACT NO. **19953A**
 DATE **Jan, 1982**

EAST GRAND BOULEVARD RELOCATION
PROFILES
STA. 7 + 15.51 TO STA. 16 + 50

