

APPROVED *[Signature]*  
 CITY ENGINEER

CHIEF ENGINEER G.T.R.Y. SYSTEM WESTERN LINES

CITY OF DETROIT

DEPARTMENT OF PUBLIC WORKS

CITY ENGINEER'S OFFICE  
 DEPARTMENT OF GRADE SEPARATION & BRIDGES  
 DEQUINDRE ST. GRADE SEPARATION

WILKINS ST.

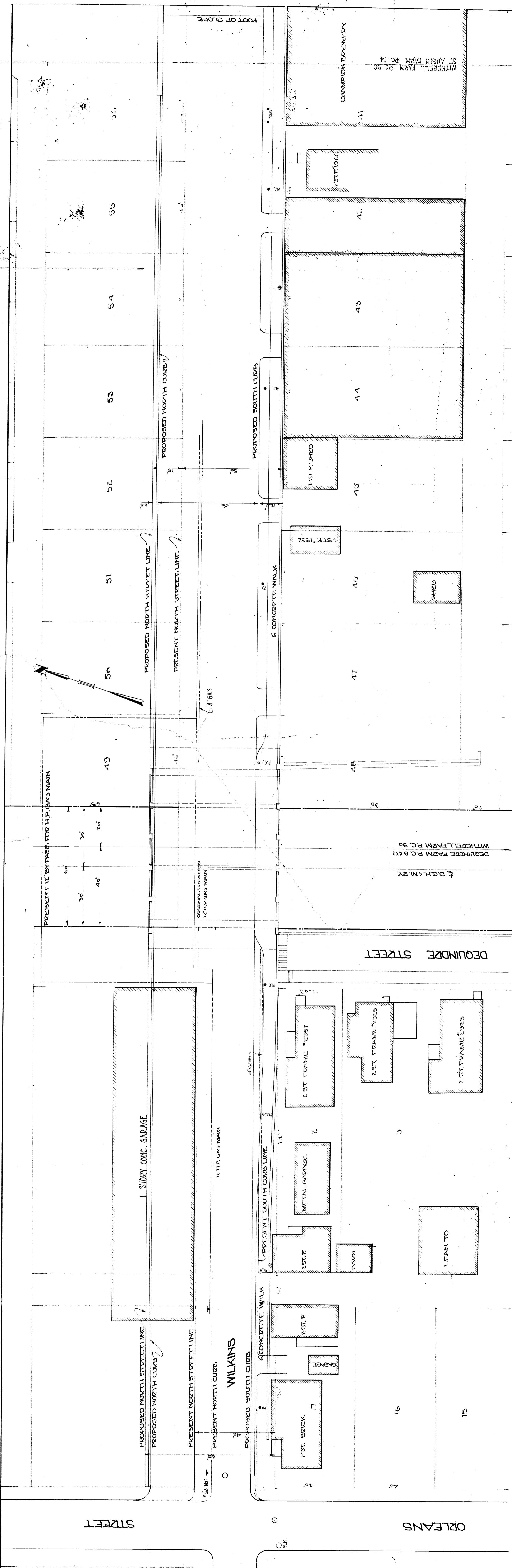
Made by: J.T.M.  
 Checked by:

Oct. 1930

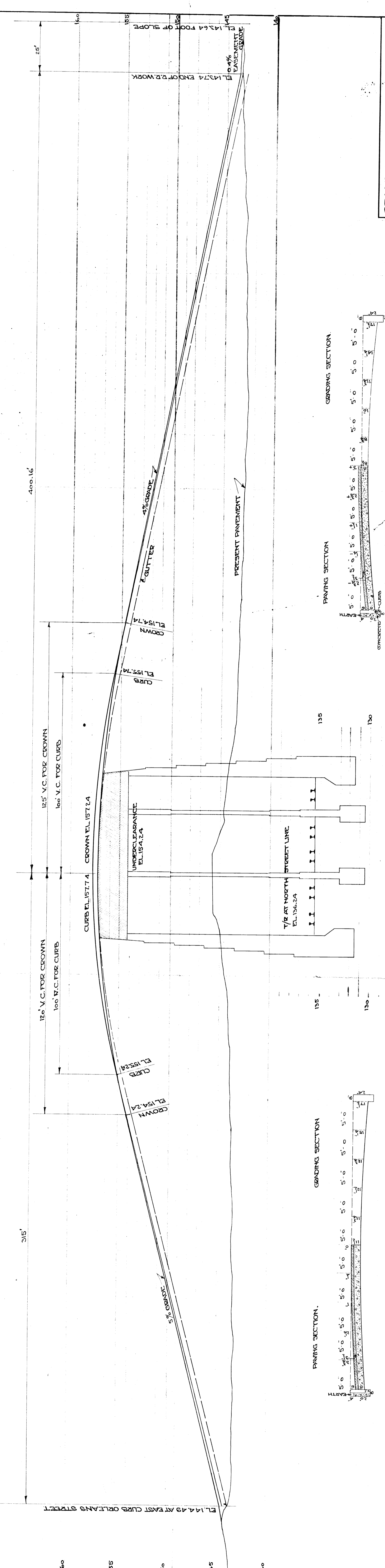
Scales  
 Plan 1"=40'  
 Vertical 1"=10'

Banks 392 & 378

File X086-1



PLAN  
SCALE: 1" = 30'



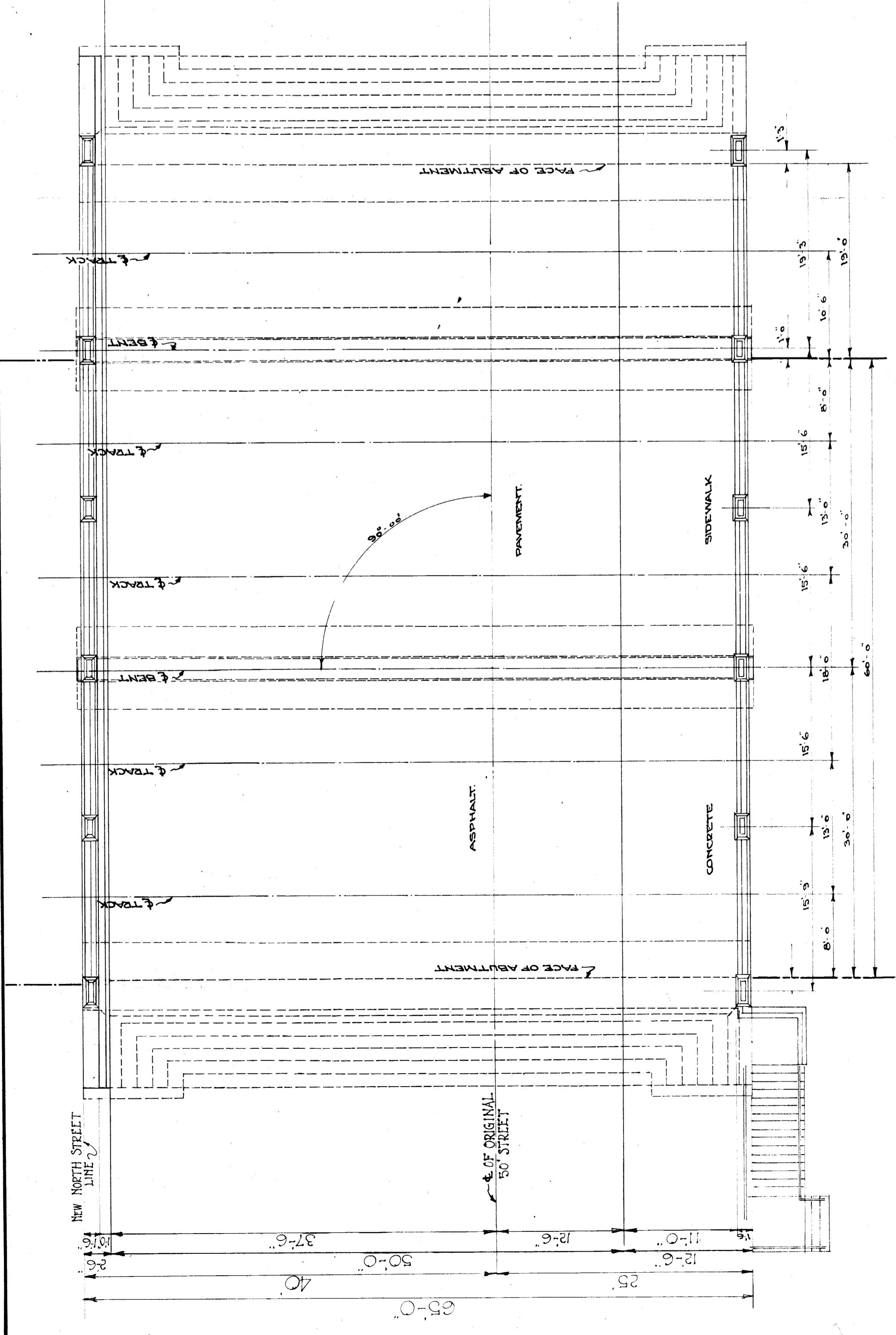
CROSS SECTION OF PAVEMENT  
AT END OF VERTICAL CURVE

CROSS SECTION OF PAVEMENT  
AT FOOT OF SLOPE

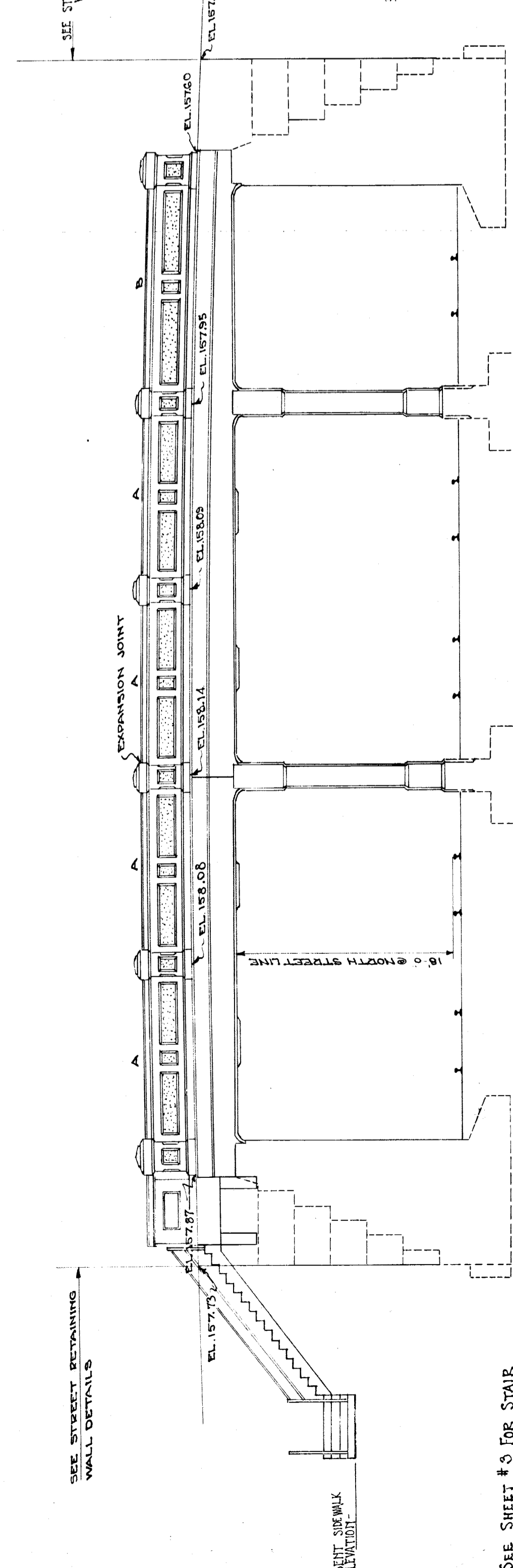
PROFILE  
SCALE: HORIZ. 1" = 30'  
VERT. 1" = 4'

GRAND TRUNK WESTERN R.R.  
STREET PLAN & PROFILE WILKINS STREET  
DEQUINDRE GRADE SEPARATION  
DETROIT, MICHIGAN  
SCALES AS SHOWN  
DR. L. S. TORWILL  
CH. M. D. B.  
OFFICE OF CHIEF ENGINEER  
DETROIT, MICHIGAN  
JULY 9, 1906  
JOURNAL NO. W-3100  
FILE

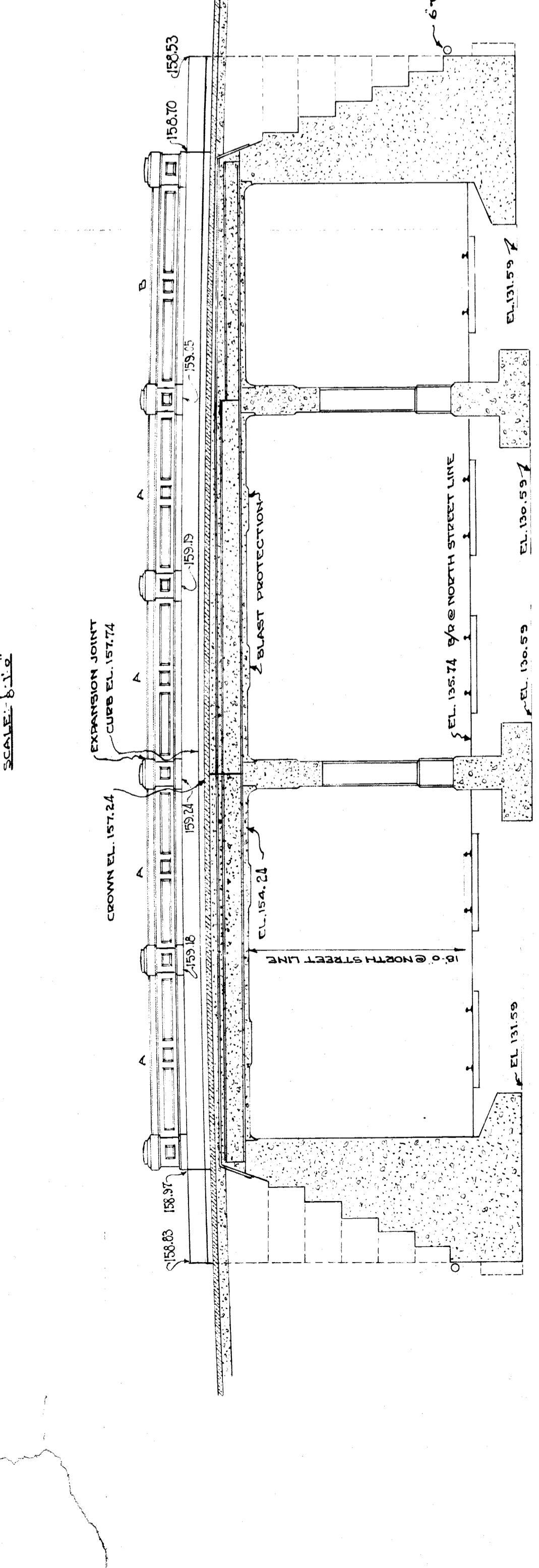
1413/45



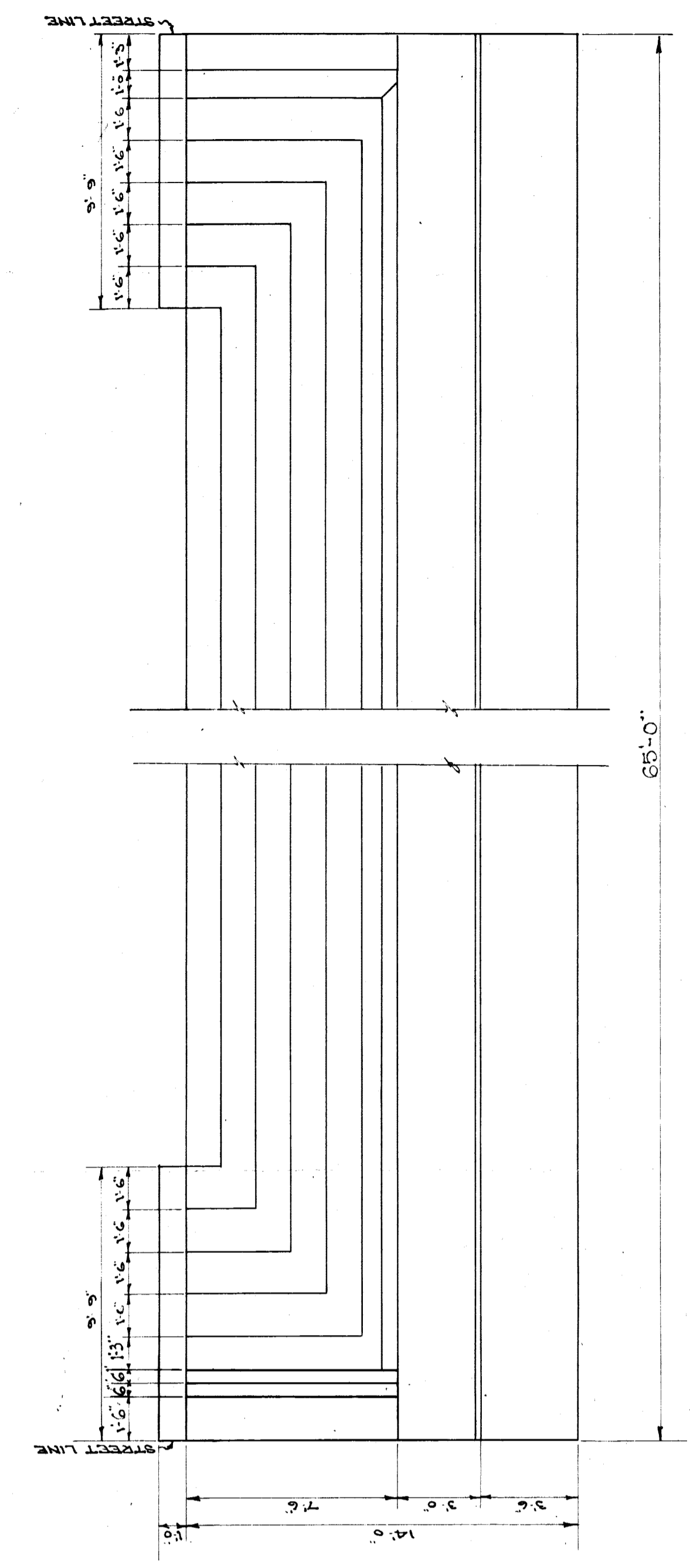
**PLAN**  
SCALE: 1/8" = 1'-0"



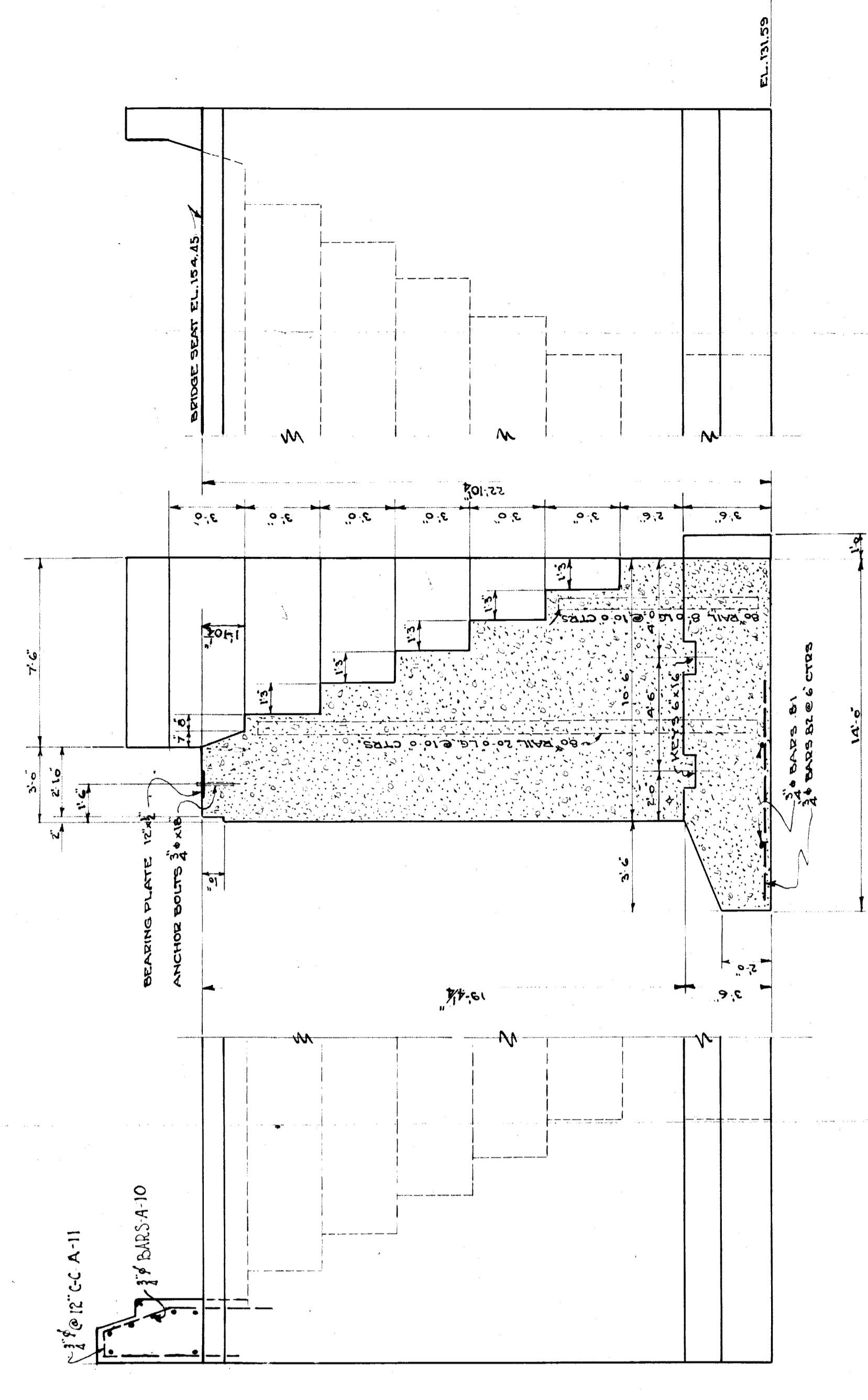
**SOUTH SIDE ELEVATION**  
SCALE: 1/8" = 1'-0"



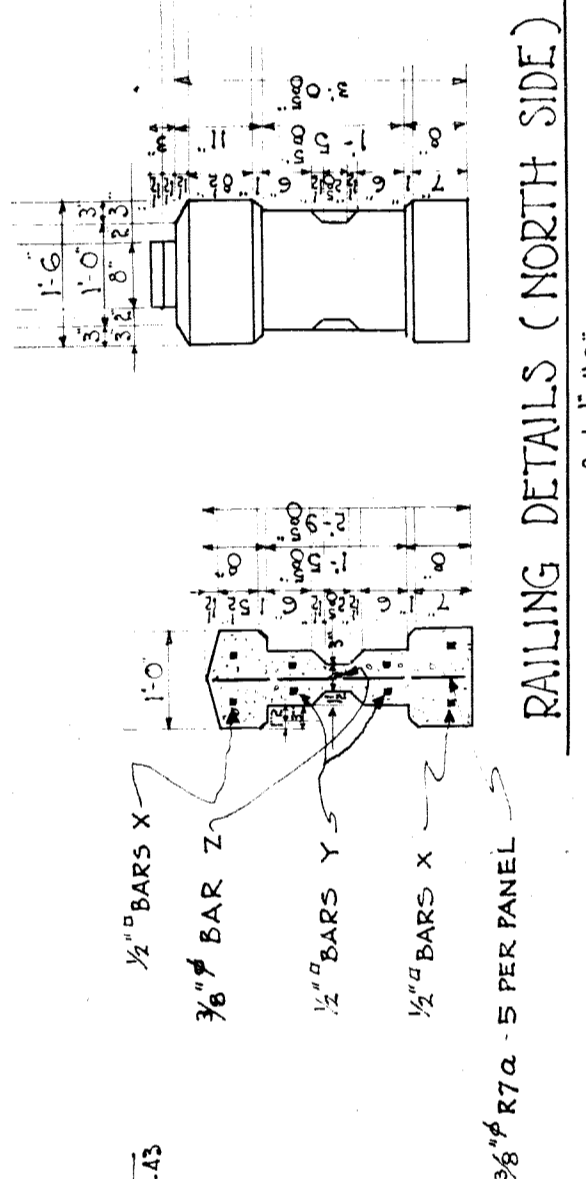
**LONGITUDINAL ELEVATION**  
SCALE: 1/8" = 1'-0"



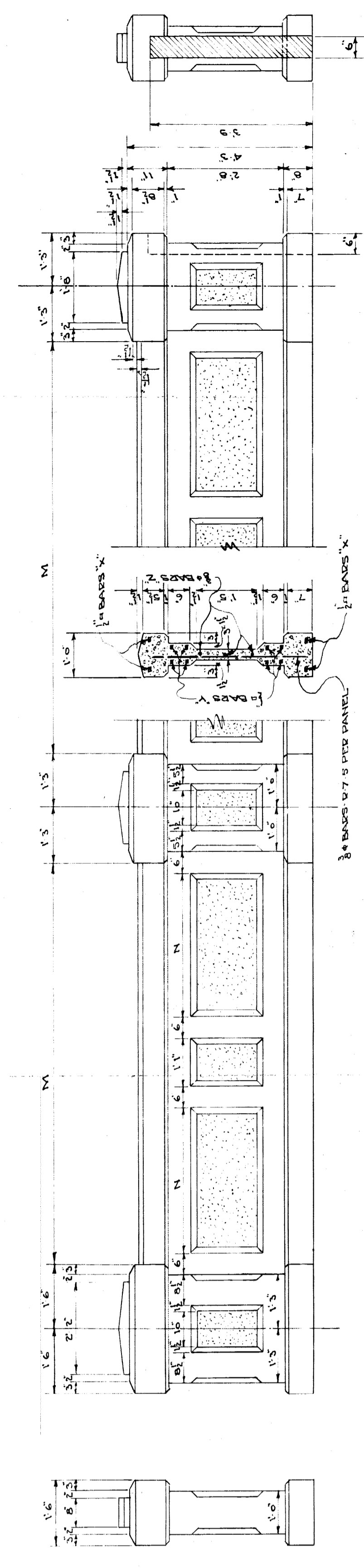
**PLAN OF EAST ABUT**  
WEST OPPOSITE HAND EXP. FOR STAIR LANDING  
SCALE: 1/8" = 1'-0"



**DETAIL OF ABUTMENT**  
SCALE: 1/8" = 1'-0"



**RAILING DETAILS (NORTH SIDE)**  
SCALE: 1/8" = 1'-0"



**RAILING DETAILS (FOR SOUTH SIDE)**  
SCALE: 1/8" = 1'-0"

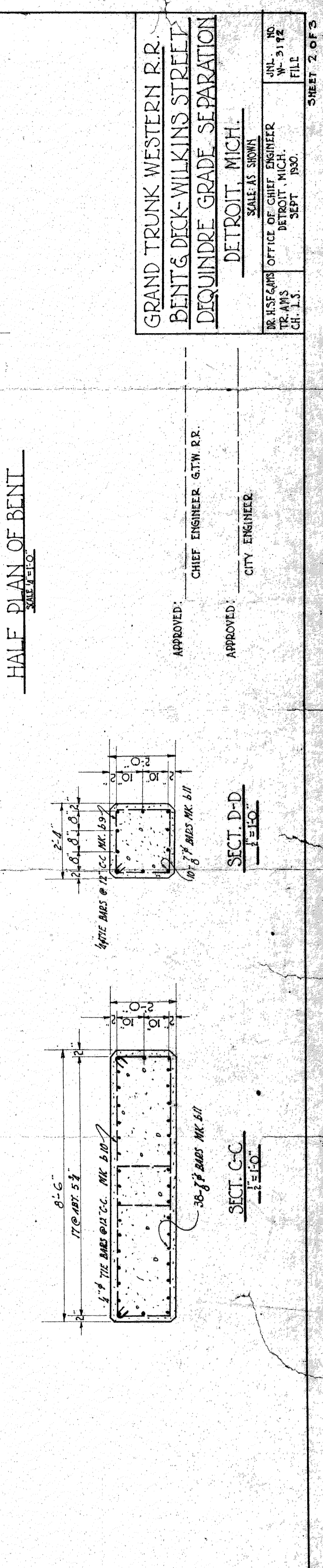
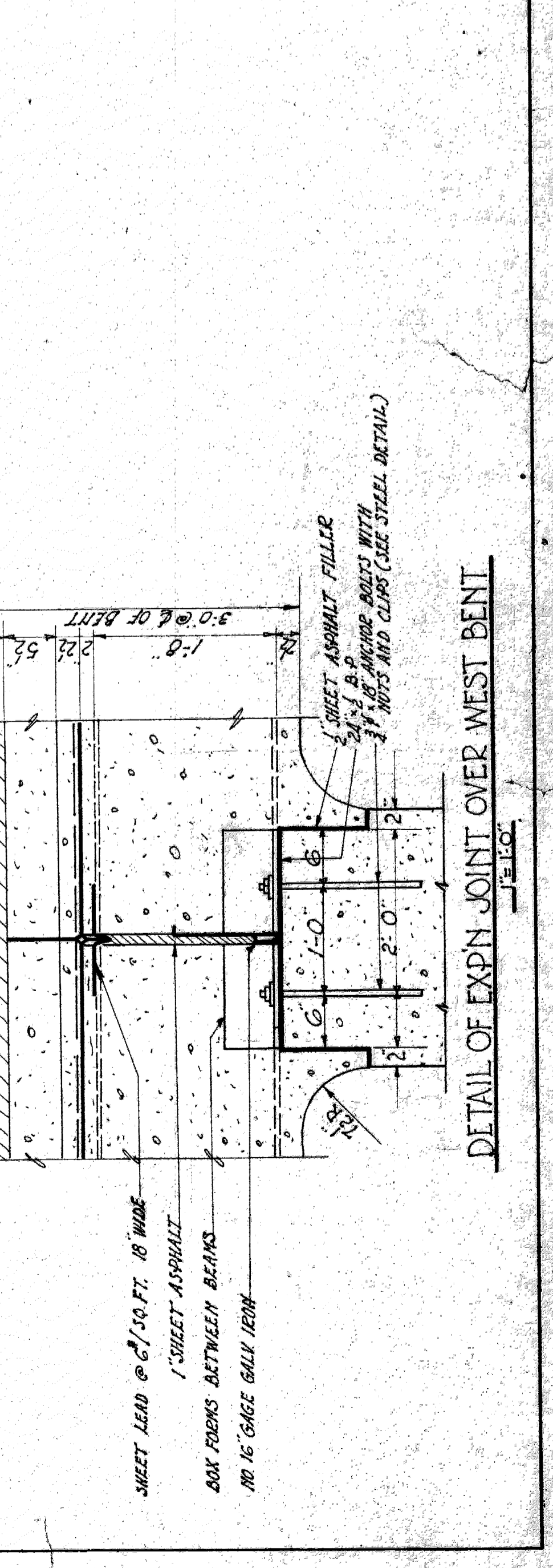
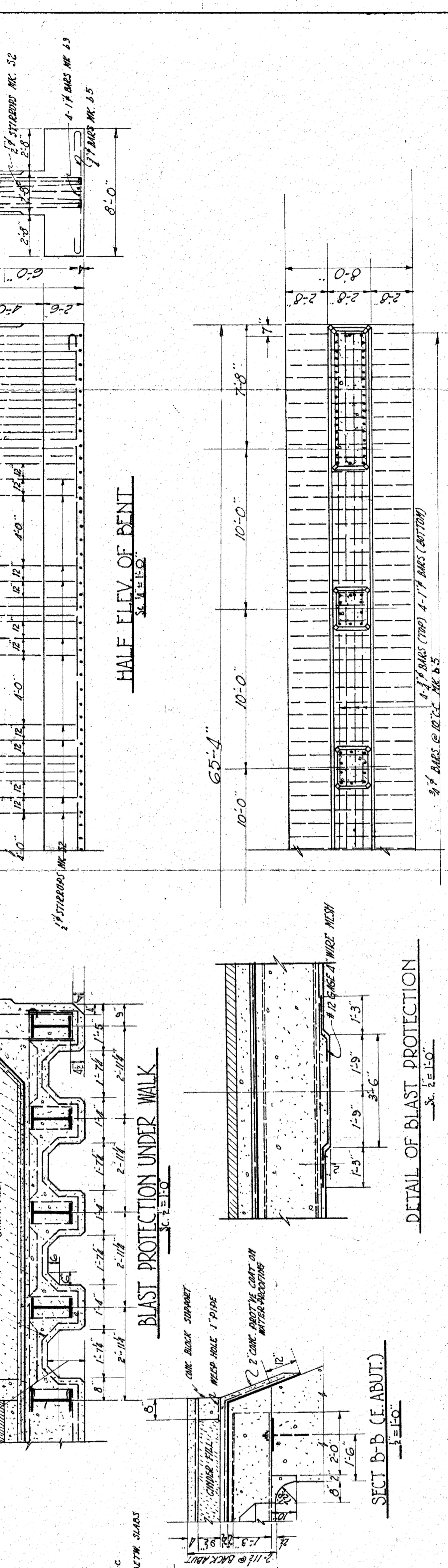
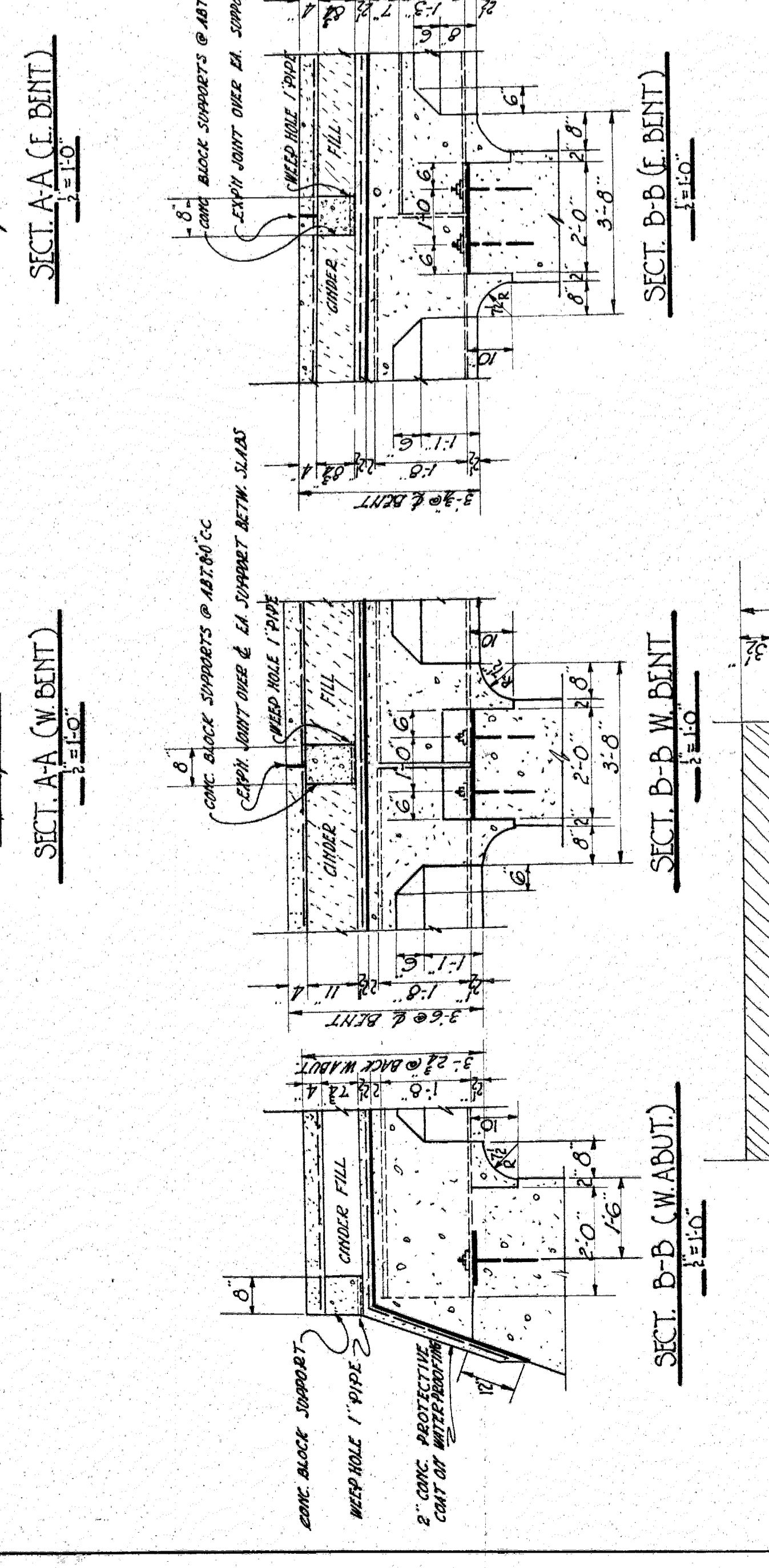
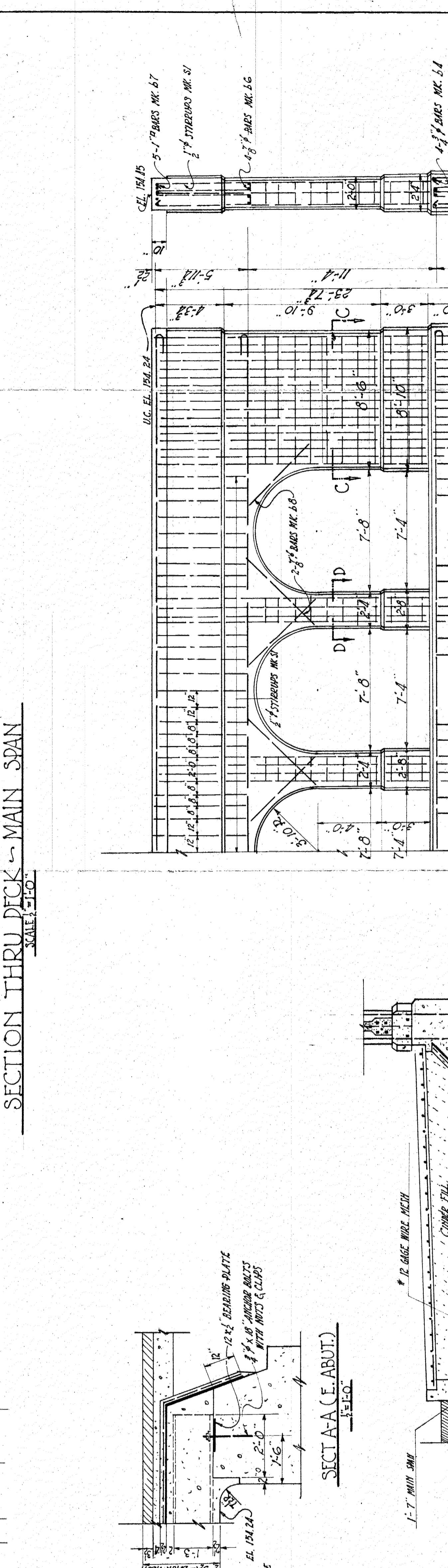
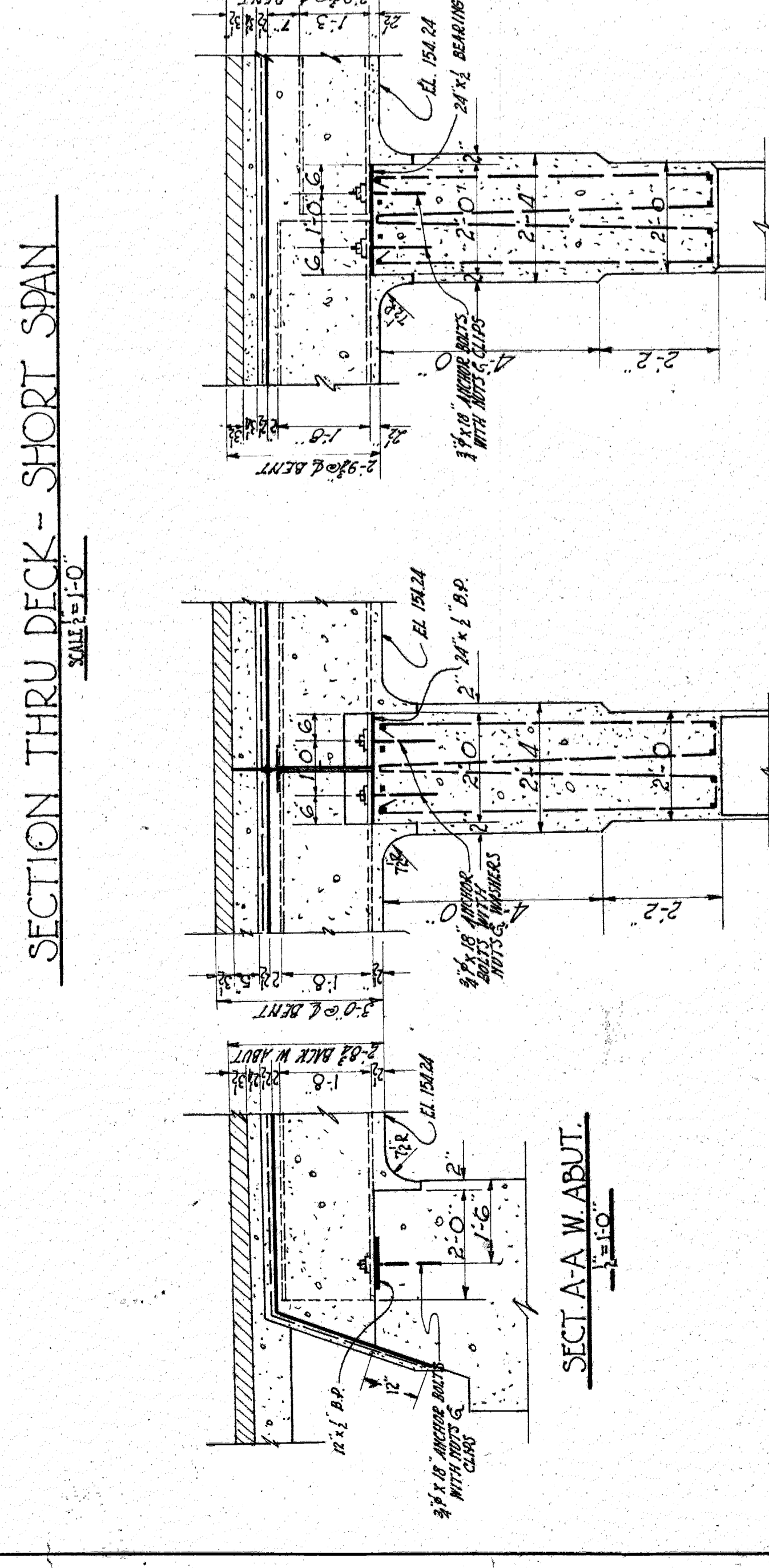
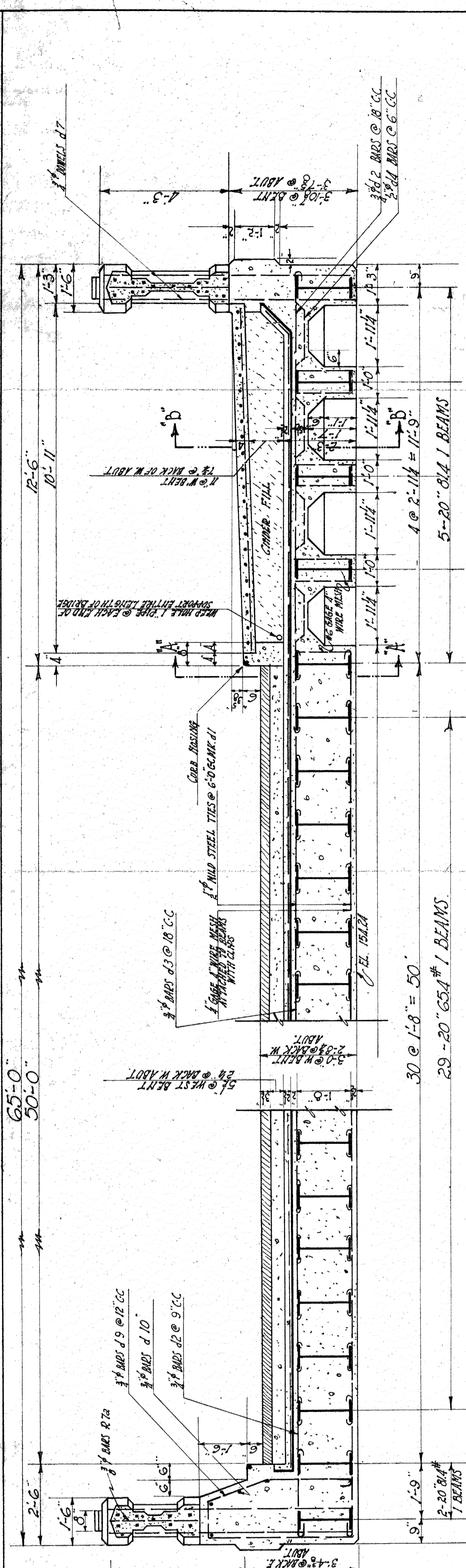
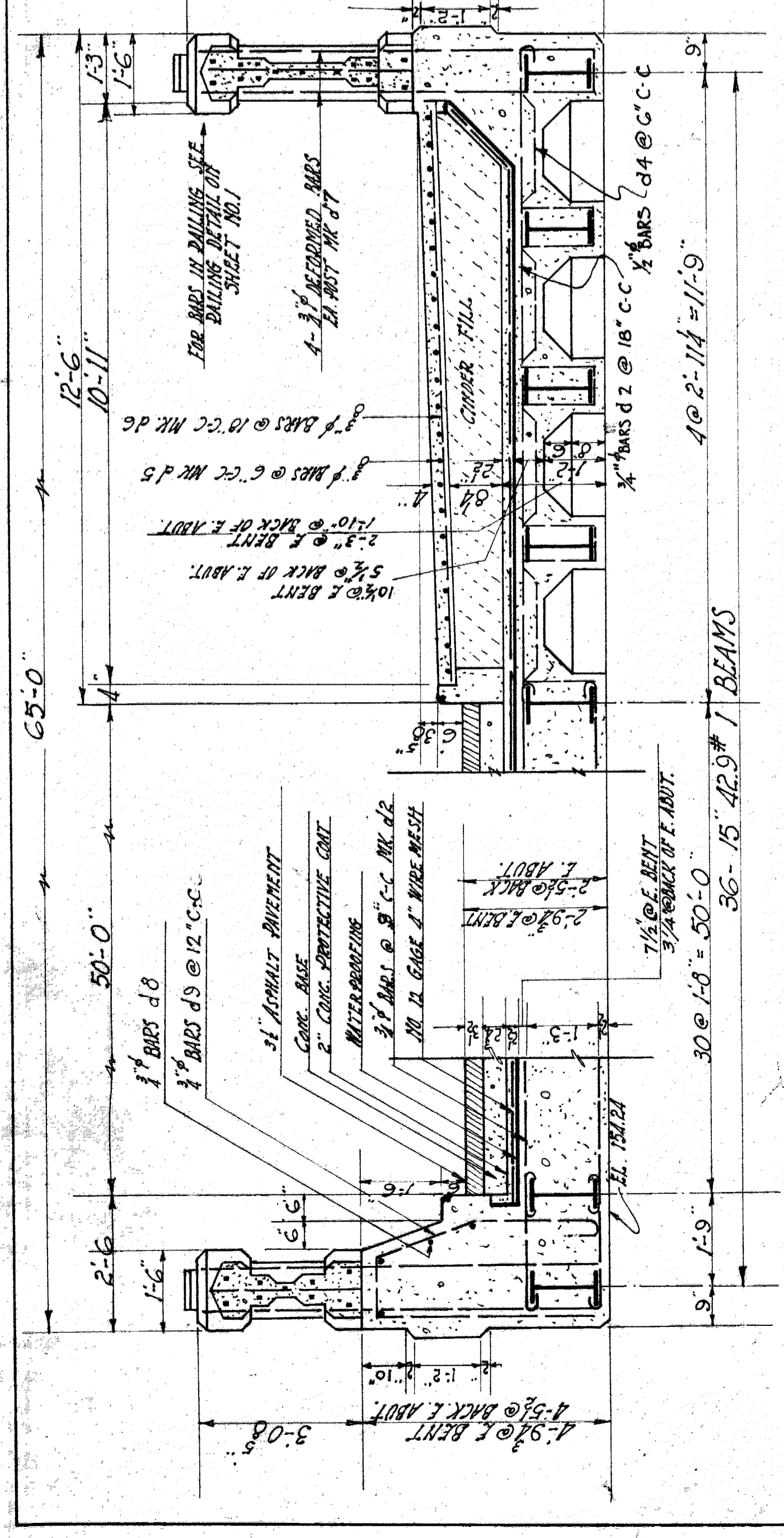
RAILING BAR SCHEDULE					
PANEL	M	N	1/2" BARS X	1/2" BARS Y	3/8" BARS Z
	MARK	LENGTH	MARK	LENGTH	MARK
A	19-0	5'-2"	01	12'-10"	05
B	18-0	6'-11"	02	16'-4"	04
					05
					06
					07
					08
					09
					10
					11
					12
					13
					14
					15
					16
					17
					18
					19
					20
					21
					22
					23
					24
					25
					26
					27
					28
					29
					30

APPROVED: CHIEF ENGINEER G.T.M. PER. CO.

APPROVED: CITY ENGINEER

GRAND TRUNK WESTERN R.R.  
MASONRY PLANS WILKINS STREET  
DEQUINDRE GRADE SEPARATION  
DETROIT, MICHIGAN.  
SCALE: AS SHOWN  
OFFICE OF CHIEF ENGINEER  
DETROIT MICHIGAN  
JULY 15, 1920  
CHAS. S.  
JOURNAL #1  
M-3391  
FILE  
SHEET 141 OF 3





GRAND TRUNK WESTERN R.R.  
BENT & DICK-WILKINS STREET  
DEQUINDE GRADE SEPARATION  
DETROIT, MICH.

SCALE AS SHOWN

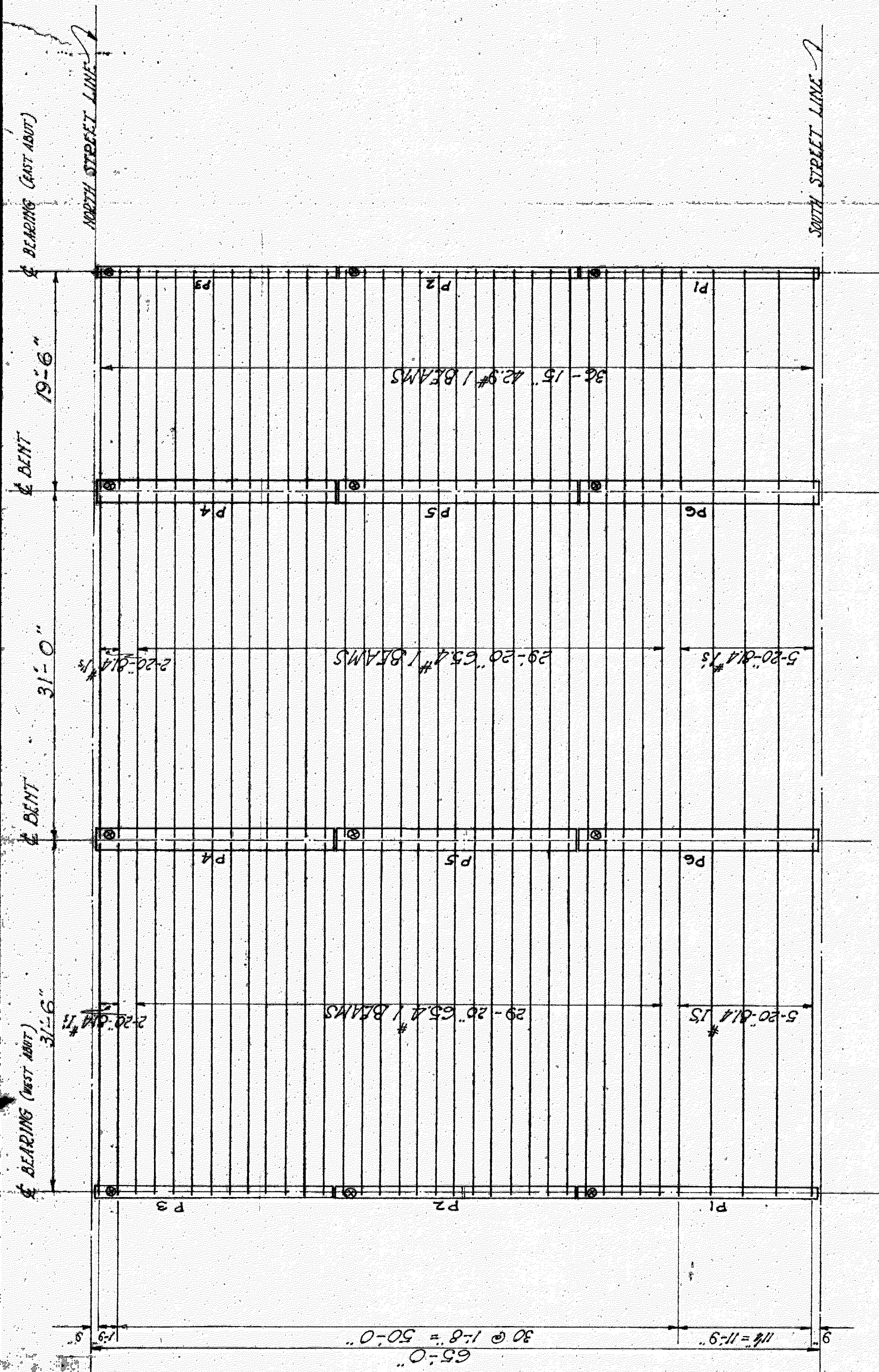
APPROVED: CHIEF ENGINEER G.T.W. R.R.  
APPROVED: CITY ENGINEER

IN REPLY TO OFFICE OF CHIEF ENGINEER  
DETROIT, MICH.  
TR. 4175  
CH. 1.5  
NO. 10  
W-5172  
FILE

SHEET 2 OF 3







STEEL ERECTION DIAGRAM

LOCATION	NO.	SIZE	LENGTH	REMARKS
DECK SIDEWALK	7	20'-6 1/2"	32'-0"	NO DRILLING
ROADWAY	23	20'-6 1/2"	32'-0"	
SIDEWALK	7	20'-6 1/2"	31'-0"	
ROADWAY	23	20'-6 1/2"	31'-0"	
DECK SHORT SPAN	36	15'-4 1/2"	20'-0"	

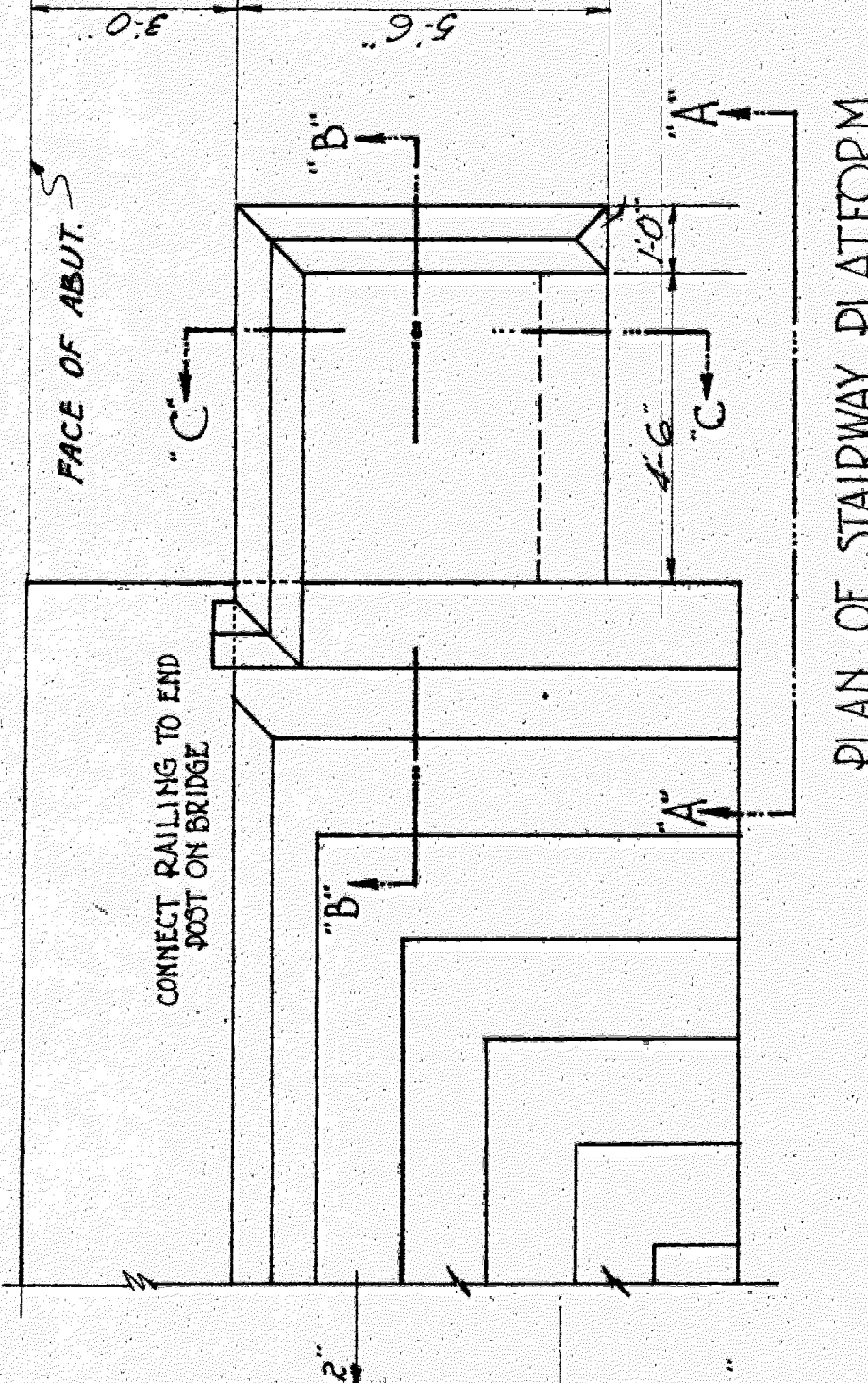
  

ITEM	NO.	SIZE	LENGTH	MARK	DESCRIPTION
ABUTMENT BEARING PLATES	2	12"x12"	21'-7 1/2"	P 3	SEE DETAIL
BENT BEARING PLATES	2	24"x24"	21'-7 1/2"	P 4	
ANCHOR BOLTS	4	3/4"	18"		SWAGLE BOLTS WITH HEX NUTS & WASHERS SEE DETAIL
CLIPS	4	3/4"	0-2 1/2"		

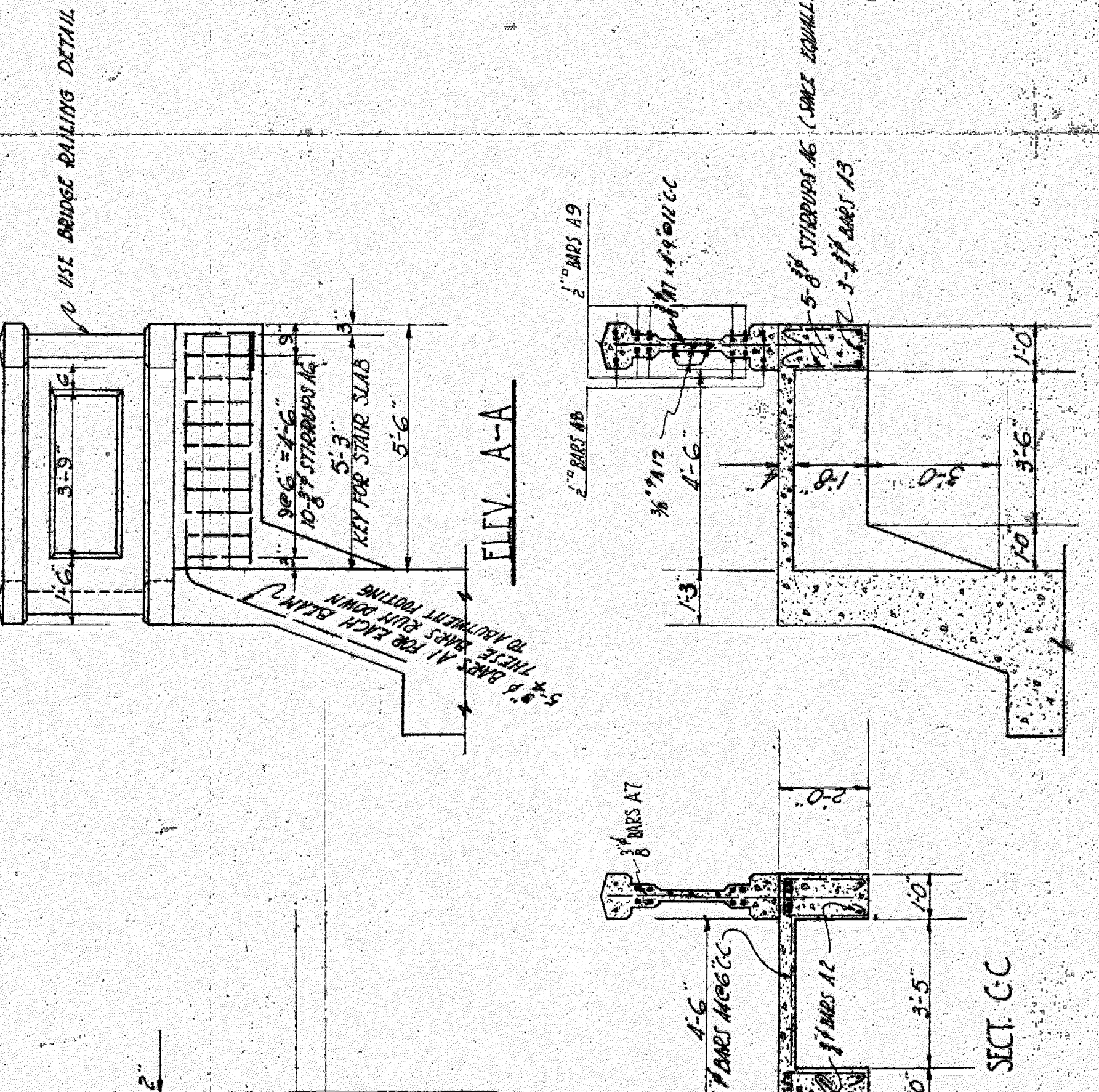
  

LOCATION	LIN. FT.	WIDTH	DESCRIPTION
BOTTOM OF DECK	1200	46"	A. S. & W. CO. 1-1/2 IN GAGE 4 IN WIRE MESH
SIDEWALK BEAMS	400		1- NO. 6
BLAST PROTECTION ROADWAY	950		1- NO. 12
BLAST PROTECTION DECK	100	32"	1- NO. 12
PROTECTIVE COAT DECK	950	46"	1- NO. 12

LOCATION	MK. NO.	SIZE	LENGTH	BENDING DIAGRAM
ABUT. FOOTING	B1	3/4"	33'-6"	STRAIGHT
"	B2	3/4"	8'-0"	
BOT. OF BENT	B3	1 1/4"	35'-6"	
TOP OF BENT	B4	1 1/4"	35'-6"	
BENT FOOTING	B5	7/8"	9'-6"	
TOP OF BENT	B6	1 1/4"	35'-6"	
"	B7	1 1/4"	35'-6"	
"	B8	7/8"	14'-0"	
BENT COL. TIES	B9	3/4"	8'-2"	
"	B10	3/4"	19'-3"	
"	B11	3/4"	23'-0"	
STIRRUPS (TOP OF BENT)	S1	3/8"	26'-0"	
" (BOT. OF BENT)	S2	3/8"	26'-6"	
BEAM TIES IN DECK	D1	6/10"	3'-0"	MILD STEEL - STRAIGHT - BEND IN FIELD
DECK ROADWAY	D2	1/2"	17'-3"	
" SIDE WALK	D3	1/2"	19'-6"	
"	D4	1/2"	13'-10"	
"	D5	1/2"	7'-10"	
"	D6	1/2"	10'-8"	
POST DOWNELS	R1	3/4"	12'-10"	
RAILING	R2	3/4"	16'-4 1/2"	
"	R3	3/4"	13'-8"	
"	R4	3/4"	17'-2"	
"	R5	3/4"	13'-6"	
"	R6	3/4"	17'-2"	
"	R7	3/4"	13'-6"	
"	R8	3/4"	22'-1"	
DECK (NORTH SIDE)	D8	1/2"	22'-0"	
"	D9	1/2"	10'-3"	
"	D10	3/4"	32'-0"	
STAIR PLATFORM	A1	10"	27'-9"	
"	A2	5"	5'-3"	
"	A3	3"	5'-0"	
"	A4	9"	5'-0"	
"	A5	7"	5'-3"	
STIRRUPS	AG	7/8"	4'-5"	
STAIR RAILING	AT	1 1/2"	4'-9"	
"	A8	4"	10'-9"	
"	A9	6"	11'-3"	
ABUTMENT	A10	14"	7'-0"	
"	A11	14"	13'-6"	
STAIR RAILING	A12	3"	11'-5"	



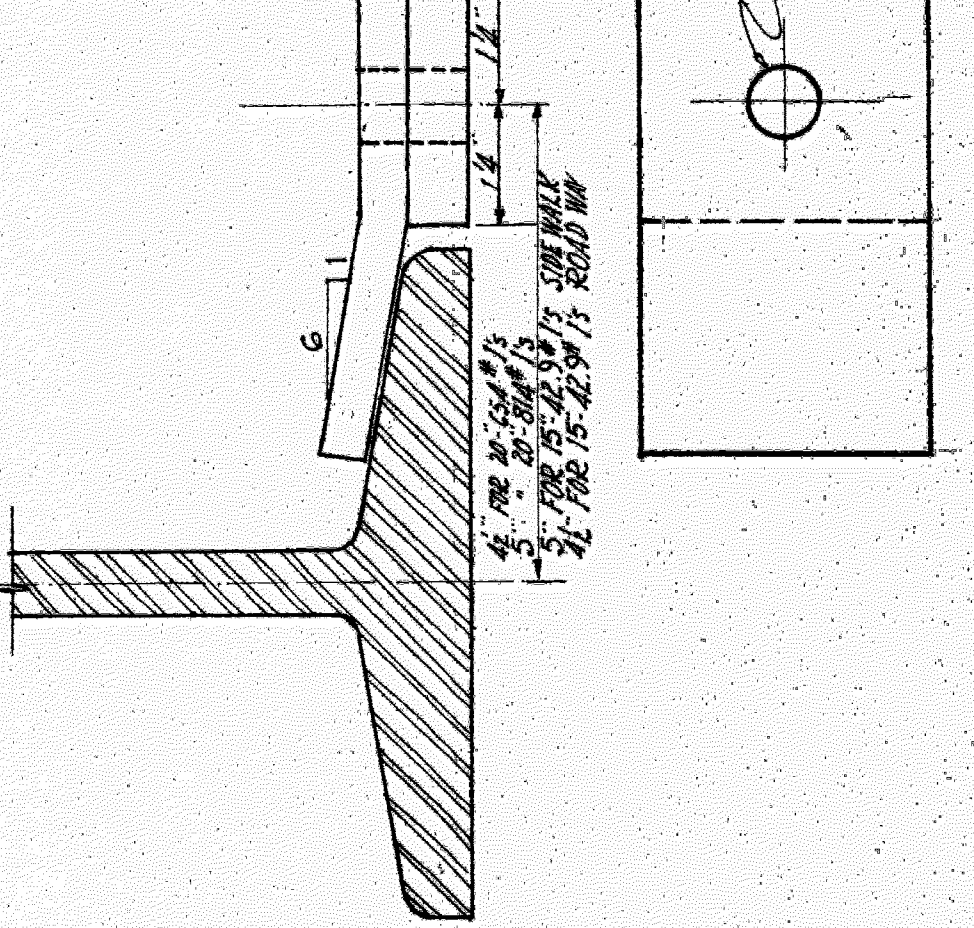
PLAN OF STAIRWAY PLATFORM



SCALE WEIGHTS OF STEEL

ITEM	WEIGHT
BEAMS	185.278
PLATES	
RIVETS, BOLTS, CLIPS ETC.	
TOTAL	

DETAIL OF I-BEAM CLIPS



SCALE WEIGHTS OF STEEL

ITEM	WEIGHT
BEAMS	185.278
PLATES	
RIVETS, BOLTS, CLIPS ETC.	
TOTAL	

WEST APPROACH  
 GRAND TRUNK WESTERN R.R.  
 STEEL DETAILS - WILKINS STREET  
 DECONCRETE GRADE SEPARATION  
 DETROIT, MICH.

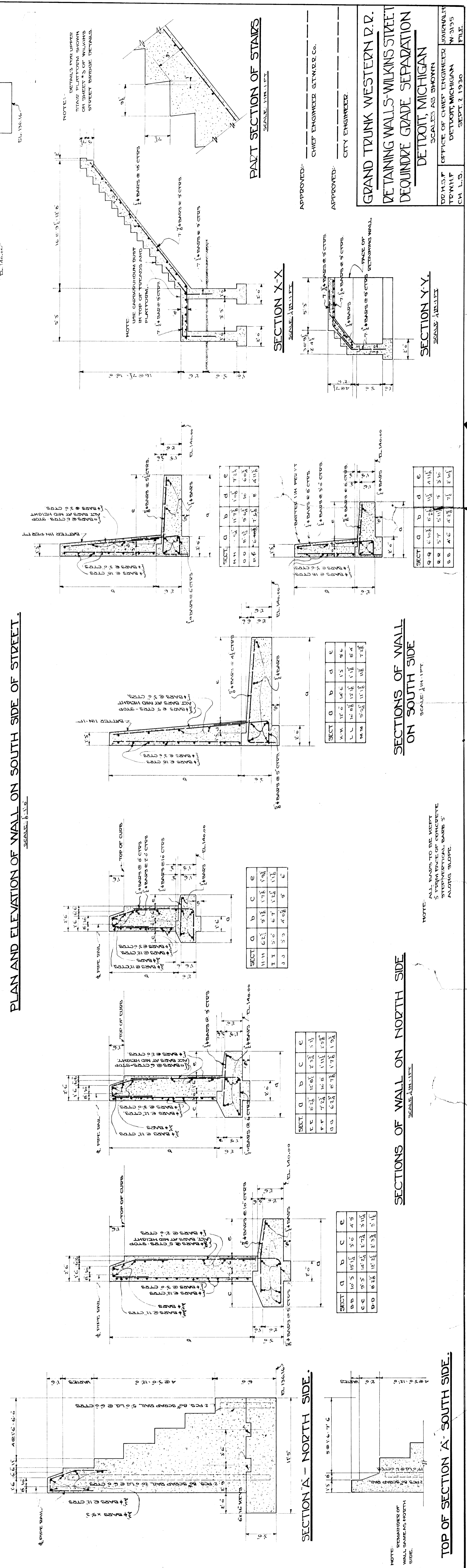
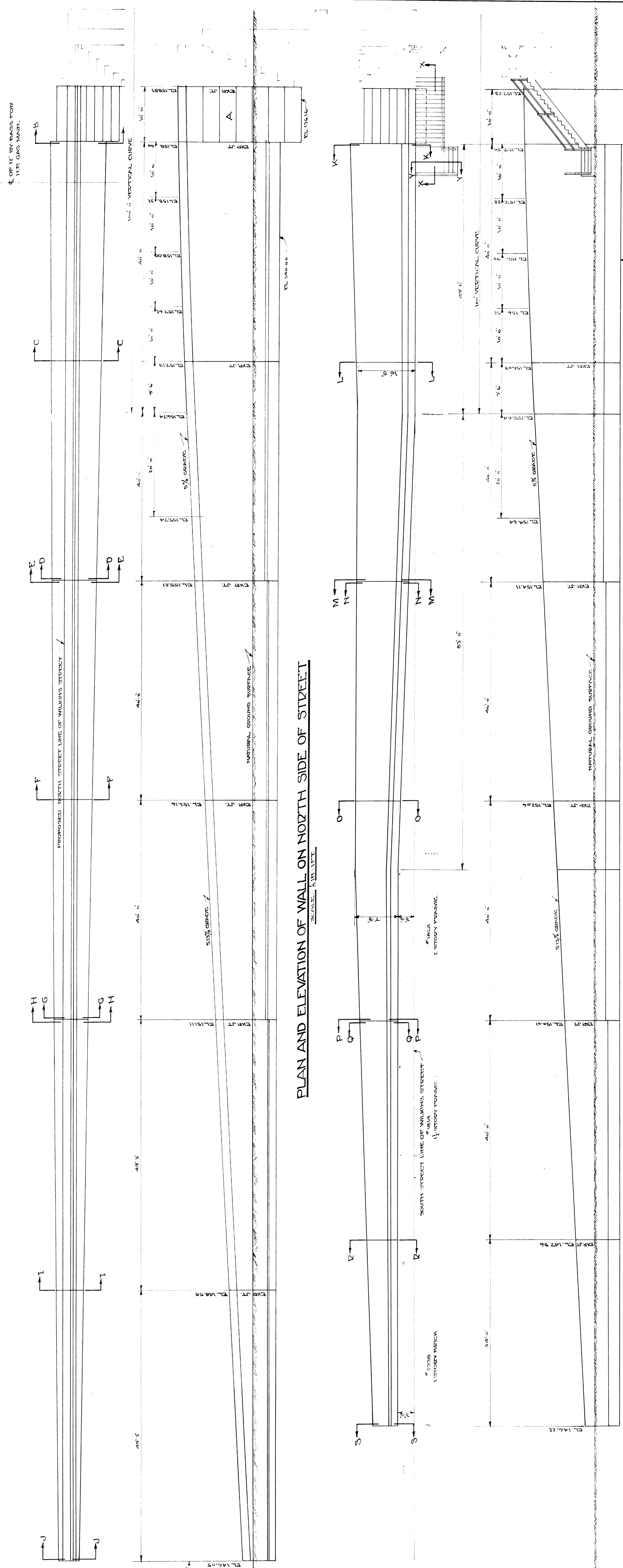
APPROVED: CHIEF ENGINEER G.T.W. R.R.

APPROVED: CITY ENGINEER

WILKINS  
 OFFICE OF CHIEF ENGINEER  
 DETROIT, MICH.  
 JULY 23, 1930

TAKEN FROM ROCKWELL'S INSPECTION REPORT DATED 9-6-30





APPROVED: CHIEF ENGINEER STUBBS & CO.  
CITY ENGINEER

APPROVED: GRAND TRUNK WESTERN D. R.  
DETROIT, MICHIGAN

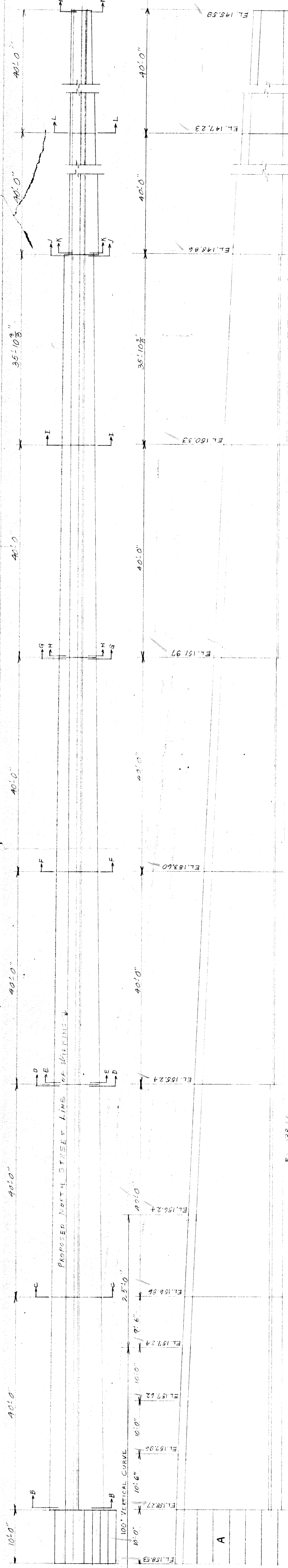
DEPARTMENT OF CHIEF ENGINEER GENERALITY  
TEMP. H. DETROIT, MICHIGAN  
CH. L. S. SEPT. 1, 1920

SECTIONS OF WALL ON SOUTH SIDE  
SCALE: 1/4" = 1'-0"

NOTE: ALL WALLS TO BE KEPT 5' FROM FACE OF CONCRETE PAVING BELOW.

SECTIONS OF WALL ON NORTH SIDE  
SCALE: 1/4" = 1'-0"

TOP OF SECTION A - SOUTH SIDE  
SCALE: 1/4" = 1'-0"



PLAN AND ELEVATION OF WALL ON NORTH SIDE OF STREET.

